

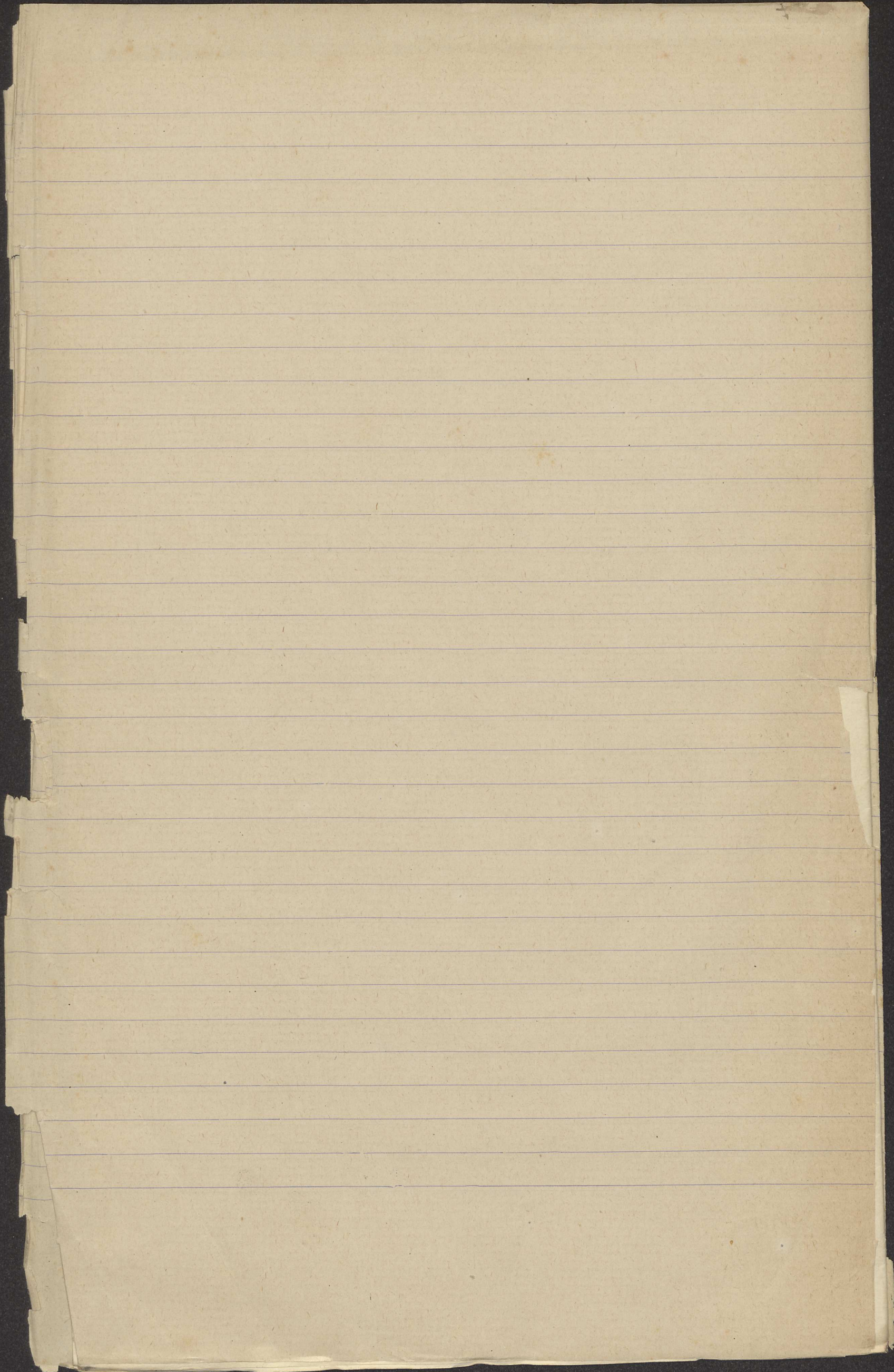
740

Ord. nr. 16, I

Pakang raras.

(kidung) 6

Ms. Or. 4359.



1
pua

Handwritten text in a script, likely a form of Malay or Indonesian, consisting of approximately 15 lines of text. The text is written in dark ink on aged paper. Some characters are highlighted in blue ink. The script appears to be a traditional form of the Malay alphabet, possibly using the Pegon or Jawi script, though the characters are somewhat stylized and difficult to decipher precisely. The text is arranged in a single column on the right page of the open book.

2

ndi

3

uling

5

tamb. or. stuff

n ma

6

7

Handwritten text in a traditional script, likely a form of Malay or Indonesian, consisting of approximately 15 lines of dense characters.

8

9

10

11

12

13

14

15

anda

und

*mawatu:
reptif.
wip - 6
nam*

kipu

*not dubbi
katarife*

*ha
nifitanga*

pirati

*m
nyaber dawat
nyrama*

masul?

mi

Handwritten text in a traditional script, continuing from the previous page, consisting of approximately 15 lines of dense characters.

16

17

18

19

20

21

22

23

*tutut parhan
de gunde
pupak*

ranphi: unagjin?

*abubakar
santi*

paat: patet

nde

masul?

unul

Handwritten text in a non-Latin script, likely Burmese, covering the left page of the manuscript. The text is arranged in approximately 20 horizontal lines.

24 *page*

25 *member*

26 *paper*

27 *creation*

28

nd

29

nd

28

9

29

Handwritten text in a non-Latin script, likely Burmese, covering the right page of the manuscript. The text is arranged in approximately 20 horizontal lines.

30

31

32

33

34

35

36

new it

man

nd

spitting

nd

nd

See at p. 100

Handwritten text in a historical script, likely Burmese, covering the left page. The text is organized into approximately 18 horizontal lines, with some lines containing small numbers or symbols. The script is dense and cursive.

ndulu

ndulu

52

tiel

ndulu

53

ndulu

54

ndulu

55

5

56

57

ndulu

Handwritten text in a historical script, likely Burmese, covering the right page. The text is organized into approximately 18 horizontal lines, with some lines containing small numbers or symbols. The script is dense and cursive.

58

59

60

61

62

63

64

65

ndulu
ndulu

ndulu

ndulu

ndulu

ndulu

Handwritten text in a script, likely Burmese, covering the left page of the manuscript. The text is organized into several horizontal lines, with some characters written in blue ink.

80 l'nya 2 bu
sumalat papa 2 bu

81

82

83

84

85

86

u

l' puppa

l'aur

2 bu

Handwritten text in a script, likely Burmese, covering the right page of the manuscript. The text is organized into several horizontal lines, with some characters written in blue ink.

87

88

89

90

91

92

93

94

95

l'ali
l'bu

malinudan
anplants?

၉၅
 ၉၆
 ၉၇
 ၉၈
 ၉၉
 ၁၀၀
 ၁၀၁
 ၁၀၂

၉၅

le lila

၉၆

၉၇

၉၈

၉၉

၁၀၀

၁၀၁

၁၀၂

T ၁၅၅၅

၁၀၃

၁၀၄

၁၀၅

၁၀၆

၁၀၇

Blackish wanner page

