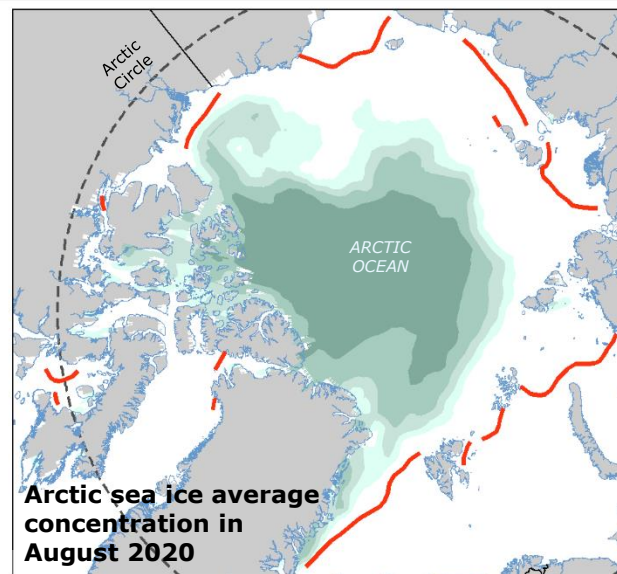
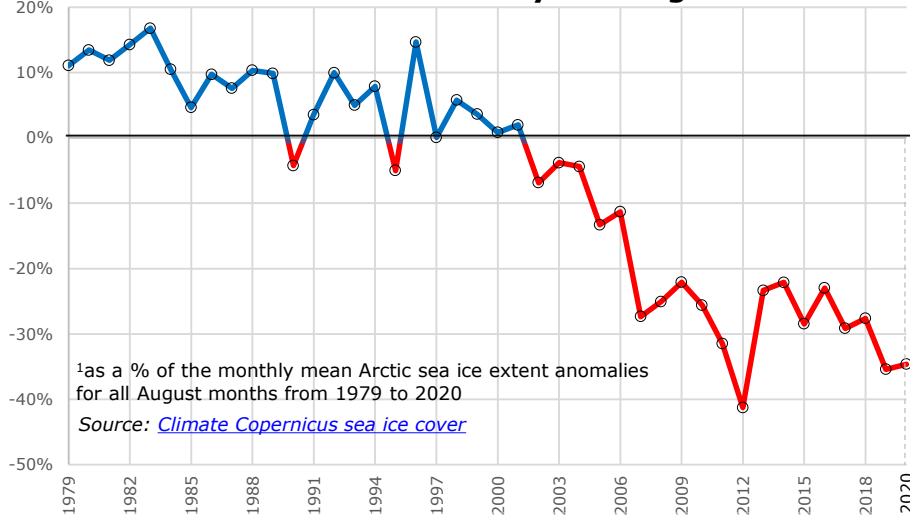
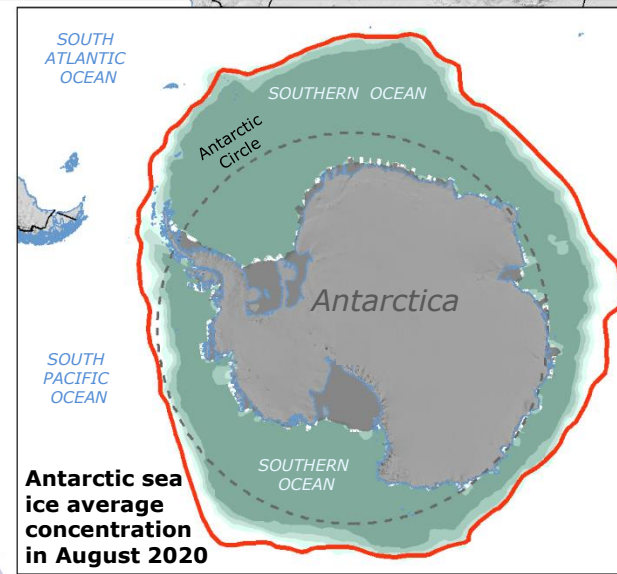
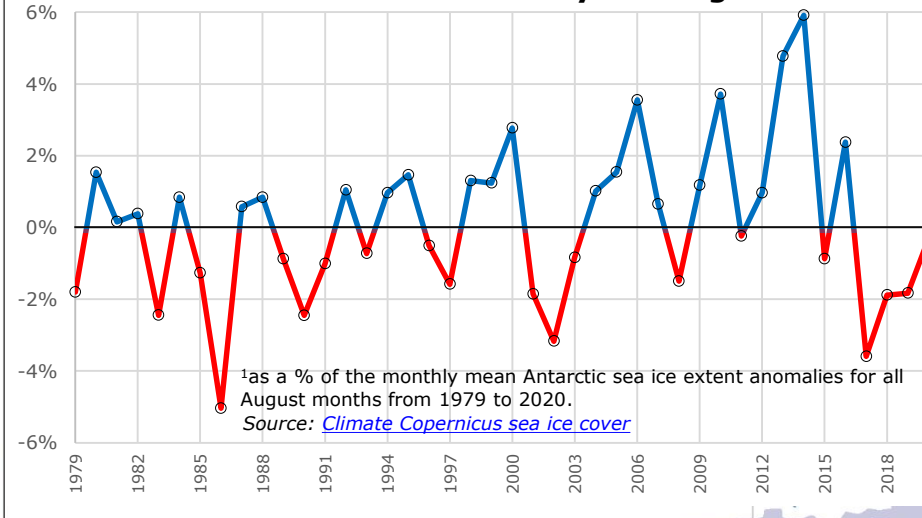


Arctic and Antarctic | Sea ice anomalies in August 2020

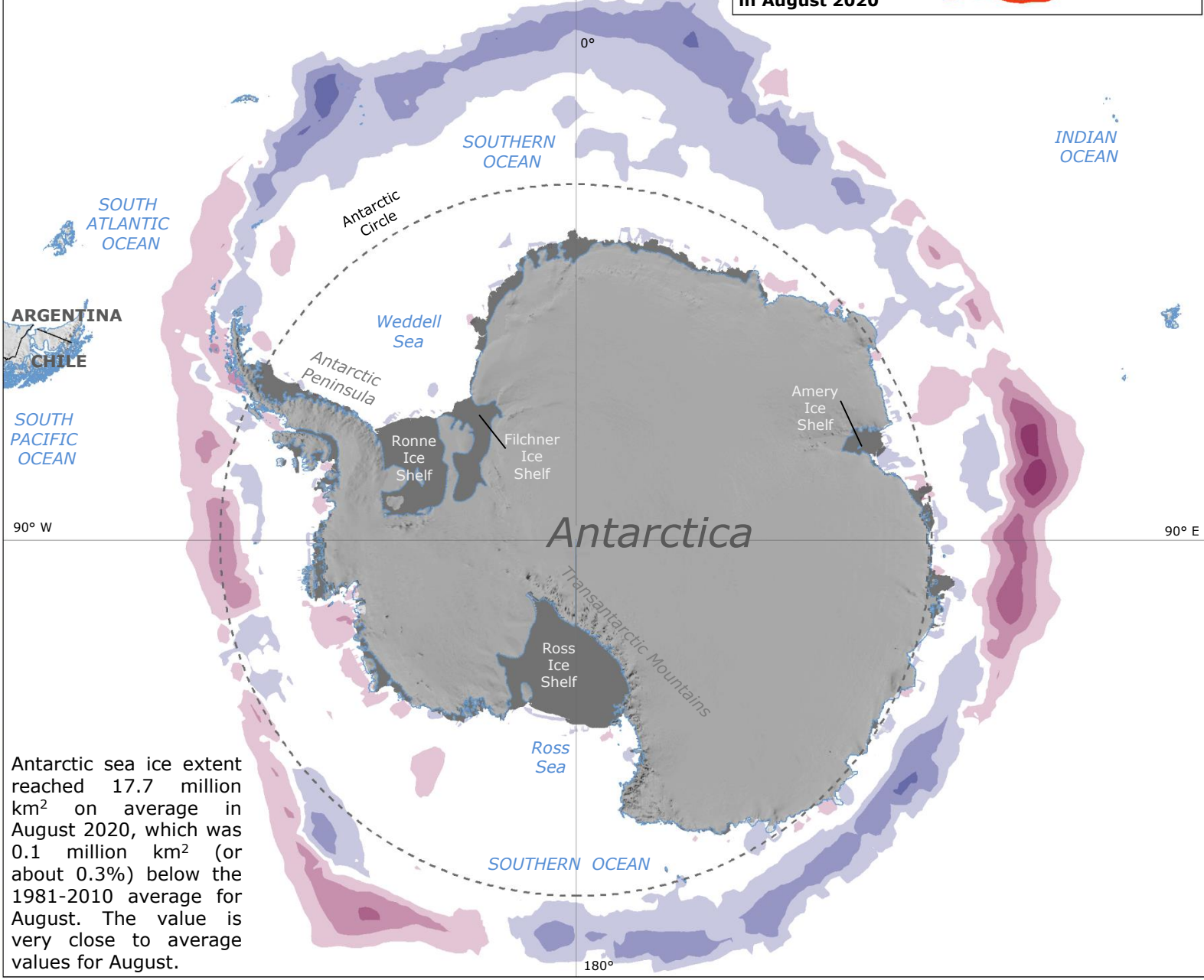
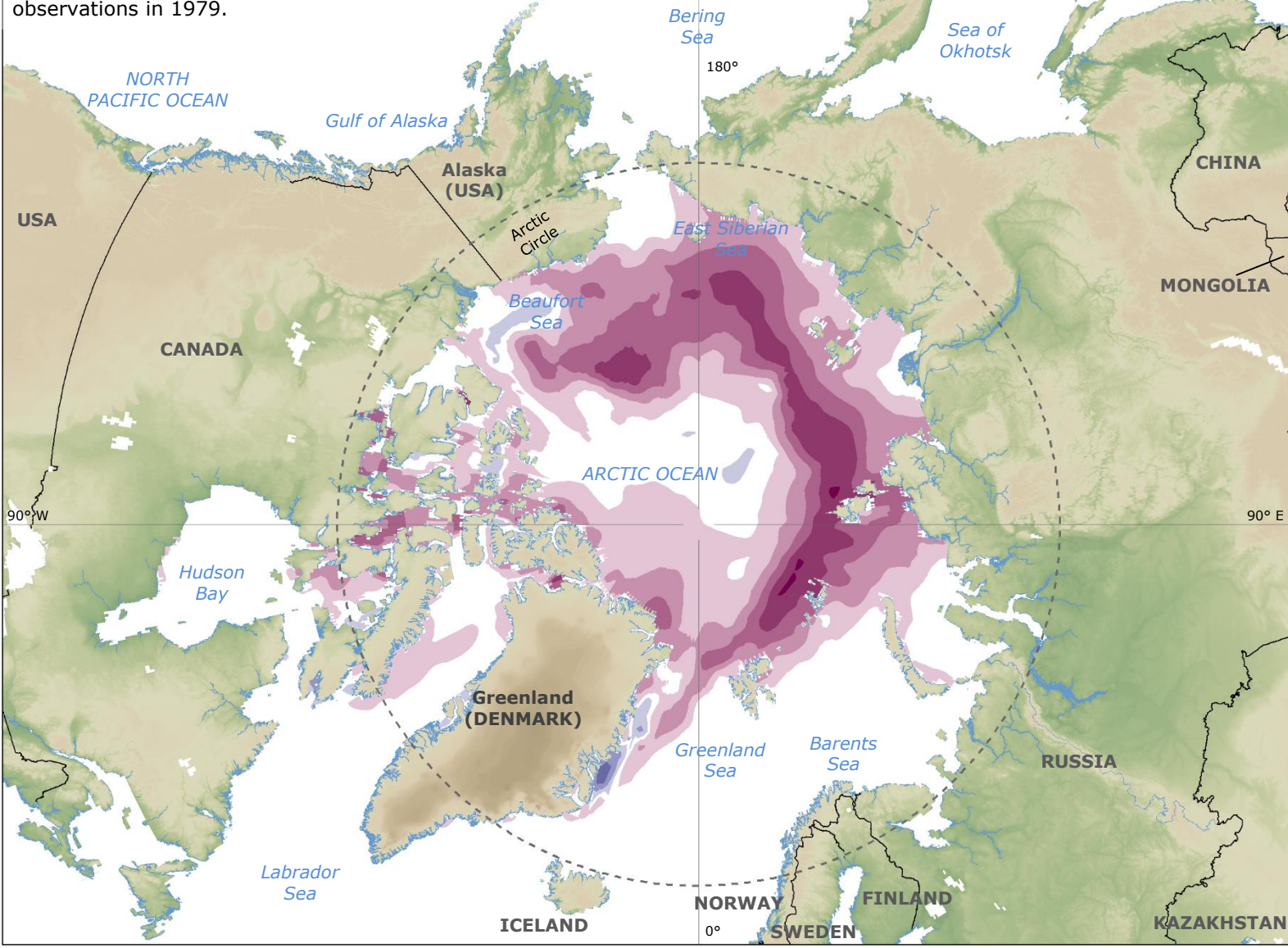
Arctic sea ice extent anomaly¹ for August 2020



Antarctic sea ice extent anomaly¹ for August 2020

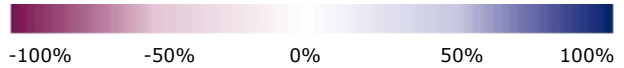


The average Arctic sea ice extent (the total area of the ocean with at least 15% sea ice cover) in August 2020 was 4.9 million km², that is 2.6 million km² (or 35%) below the 1981-2010 average for August. This was the third lowest extent recorded in August since the beginning of satellite observations in 1979.

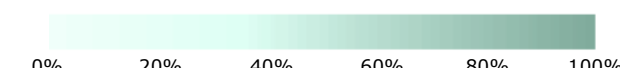


Antarctic sea ice extent reached 17.7 million km² on average in August 2020, which was 0.1 million km² (or about 0.3%) below the 1981-2010 average for August. The value is very close to average values for August.

August average sea ice cover anomalies²



Sea ice average concentration in August 2020



- Average ice edge August 1981-2010
- Ice shelf in Antarctica

²Positive percentages indicate areas with greater than average ice concentration, whilst negative percentages indicate areas with less than average ice concentration.

Additional overview maps on Arctic and Antarctic sea ice anomalies have been produced as DG ECHO Daily Maps of [28 February](#), [31 March](#), [7 May](#), [17 June](#)

Source: [Climate Copernicus sea ice cover in August](#), [Climate Copernicus Sea Ice](#), [Scientific Committee on Antarctic Research](#).