

F

549

P4I3

Views of

Memoria

and

Vicinity



Class F597

Book P413

Illustrated Souvenir of PEORIA

LOCATED ON THE ILLINOIS RIVER



PEORIA is noted for her importance as a manufacturing and commercial center. It is a city of well-paved streets, beautiful homes, good schools, fine churches and hospitable people. Wonderful natural resources. The most extensive coal mining center in the United States west of Pittsburg. The largest consumer of corn in the world. Greatest distilling district in the world. A prosperous, modern thriving city of 80,000 population, destined to surely become a city of 125,000 inhabitants within the next ten years of the Twentieth Century.



PUBLISHED for W. G. PUTNAM & COMPANY
222-224 SOUTH ADAMS STREET - - - - PEORIA, ILLINOIS

Copyright, 1908, by L. H. NELSON COMPANY, Portland, Me.



VIEW OF PEORIA LOOKING NORTH FROM MAIN AND ADAMS STREETS



VIEW OF SOUTH ADAMS STREET



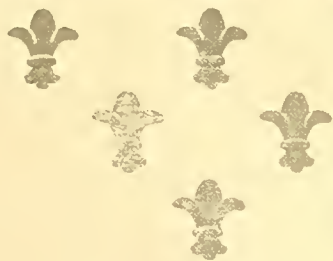
ADAMS STREET LOOKING NORTH FROM LIBERTY



JEFFERSON STREET LOOKING NORTH FROM FULTON



GOVERNMENT BUILDING



CITY HALL

COLISEUM



MILITARY DAY IN PEORIA



PUBLIC LIBRARY



Y. M. C. A. BUILDING



UNION DEPOT

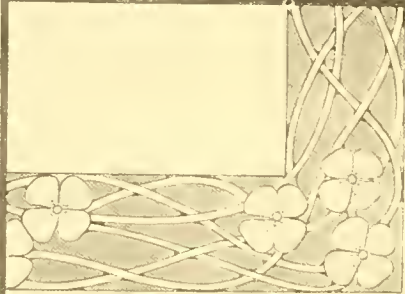
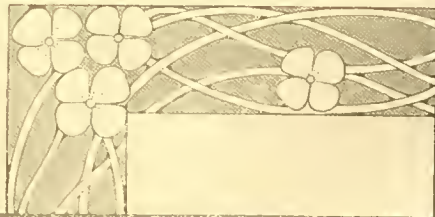


CHICAGO & ROCK ISLAND DEPOT



HOTEL FEY

DIME SAVINGS & TRUST CO.



NATIONAL HOTEL

MAYER HOTEL



CREVE COEUR CLUB

COUNTRY CLUB



Greeley School.

High School.

Lincoln School.

REPRESENTATIVE SCHOOL BUILDINGS OF PEORIA



SPALDING INSTITUTE

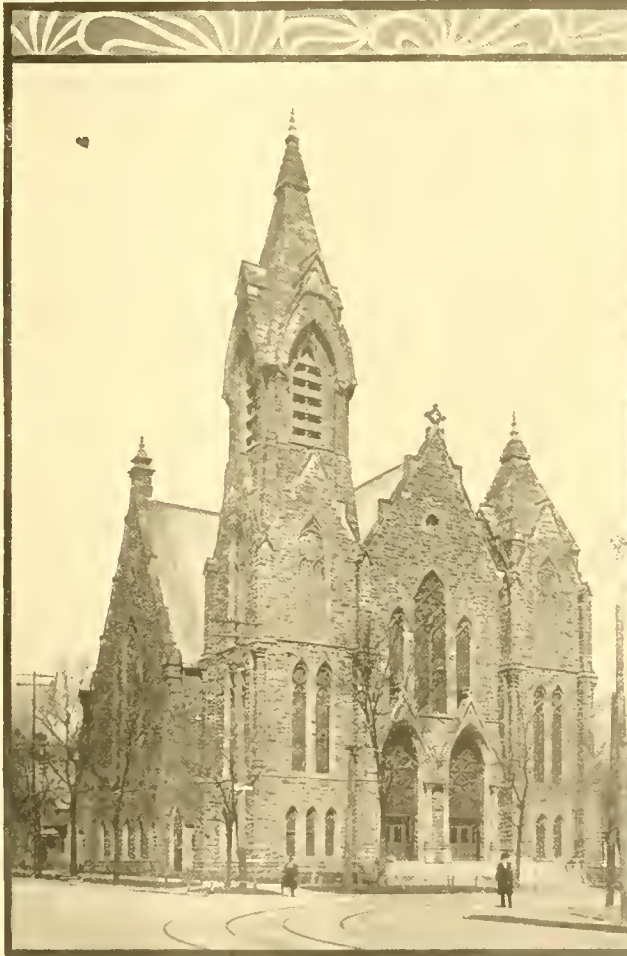


Bradley

BRADLEY POLYTECHNIC INSTITUTE



SECOND PRESBYTERIAN CHURCH



FIRST CONGREGATIONAL CHURCH



ST. MARY'S CATHEDRAL



PROCTOR ENDOWMENT HOME FOR AGED PEOPLE



ST. FRANCIS HOSPITAL

PROCTOR HOSPITAL



HAMILTON BOULEVARD

RANDOLPH AVENUE



SANDMEYER FLATS

LAWN OF MRS. CHARLOTTE S. WOODWARD



DRAW OF MCKINLEY BRIDGE



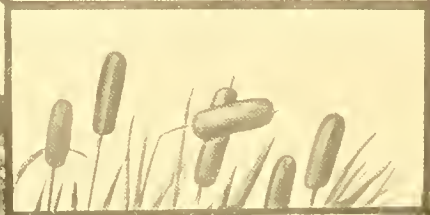
STEAMBOAT LANDING, FOOT OF MAIN STREET



BIRD'S EYE VIEW OF UPPER FREE BRIDGE



LAKE AND BRIDGE IN GLEN OAK PARK



VIEW IN GLEN OAK PARK

FOUNTAIN IN GLEN OAK PARK



PAVILION IN GLEN OAK PARK



VIEW OF BRADLEY PARK PAVILION

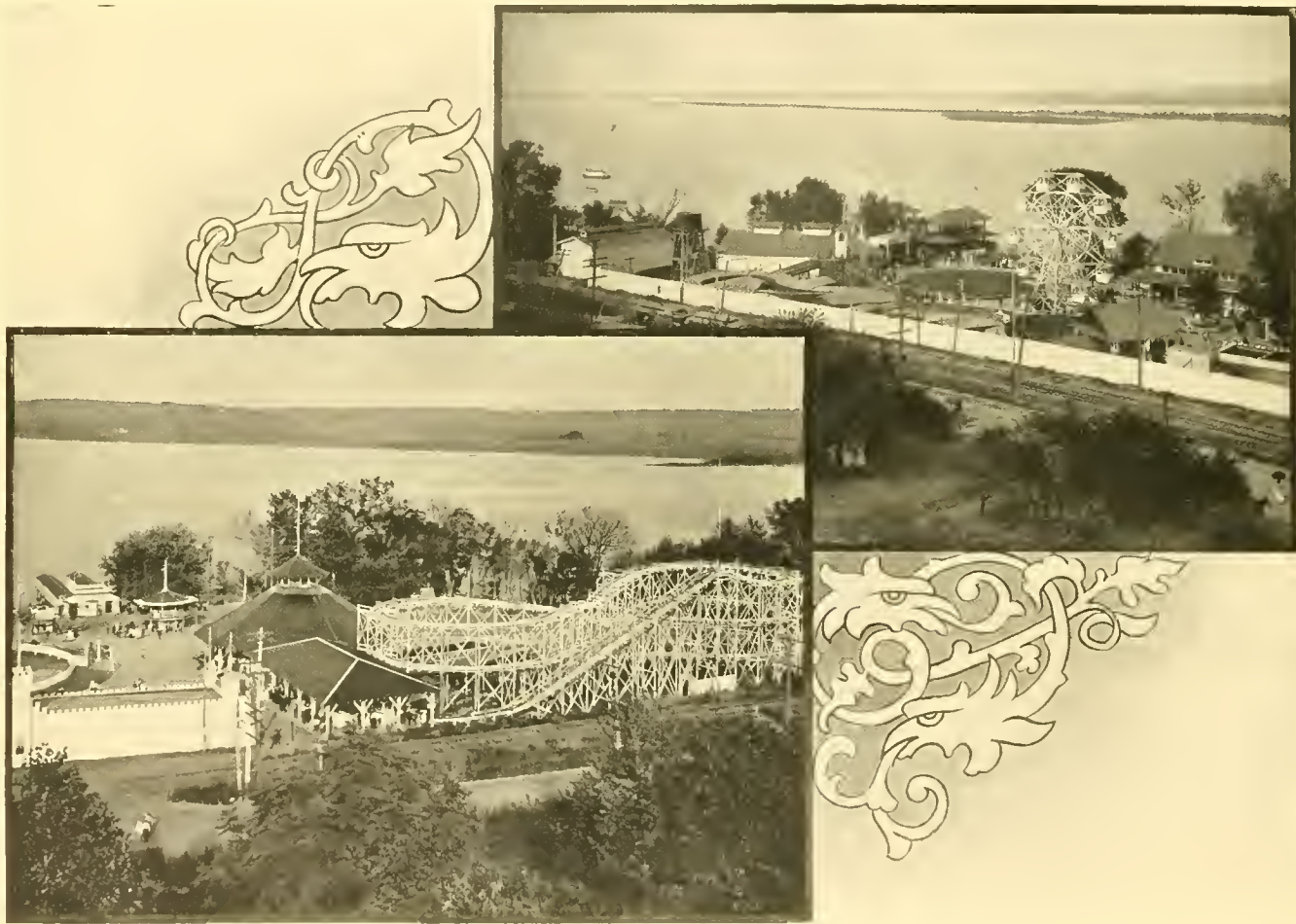
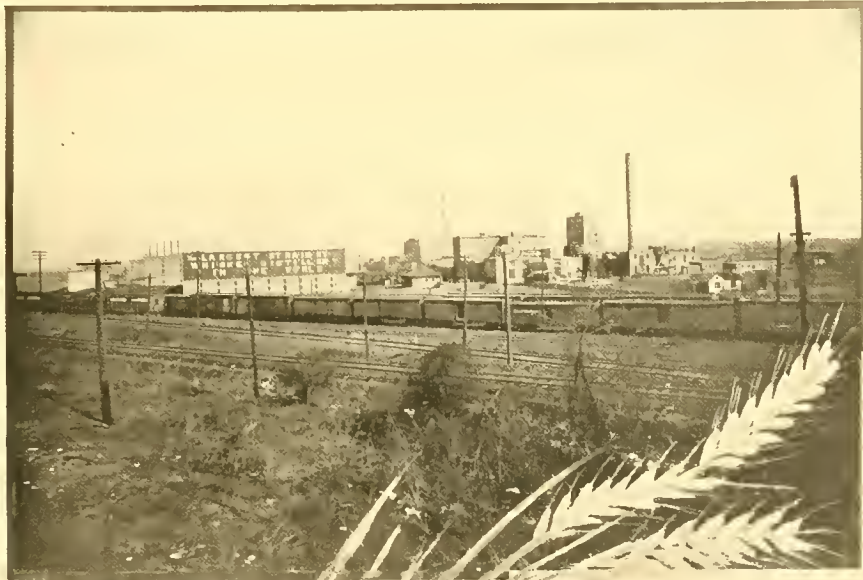


FIGURE EIGHT, AL FRESCO PARK

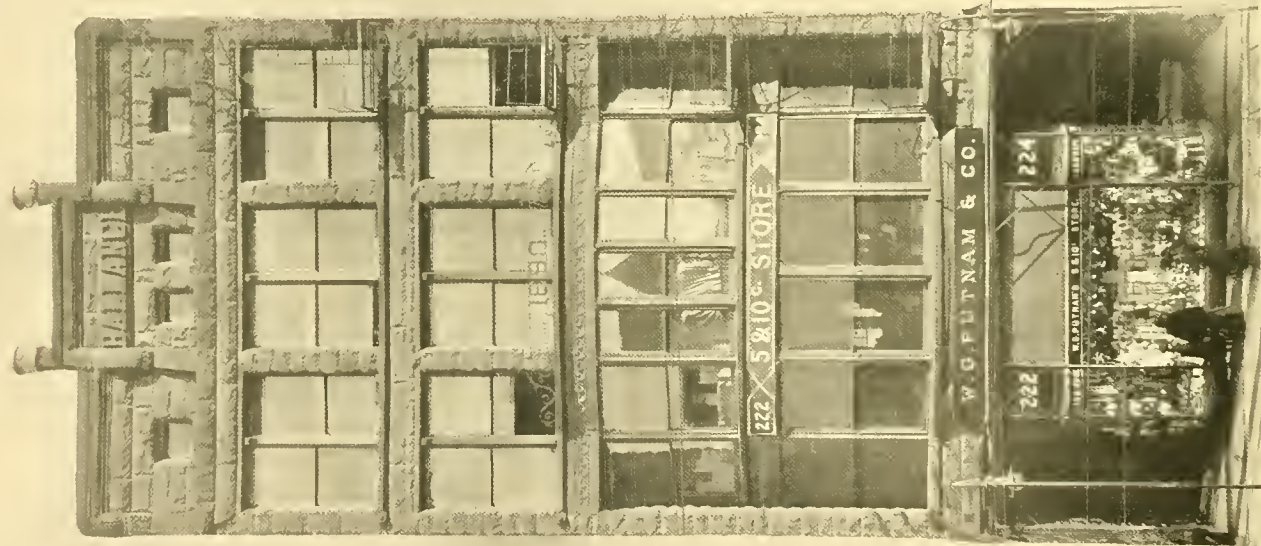
AL FRESCO PARK



PLANT OF CLARK & CO., DISTILLERS

BIRD'S EYE VIEW OF AVERYVILLE

Y 23 1908



W. G. PUTNAM & CO.'S 5 & 10 CENT STORE
222-224 South Adams St.

LIBRARY OF CONGRESS



0 016 098 752 2

