

9/12/18

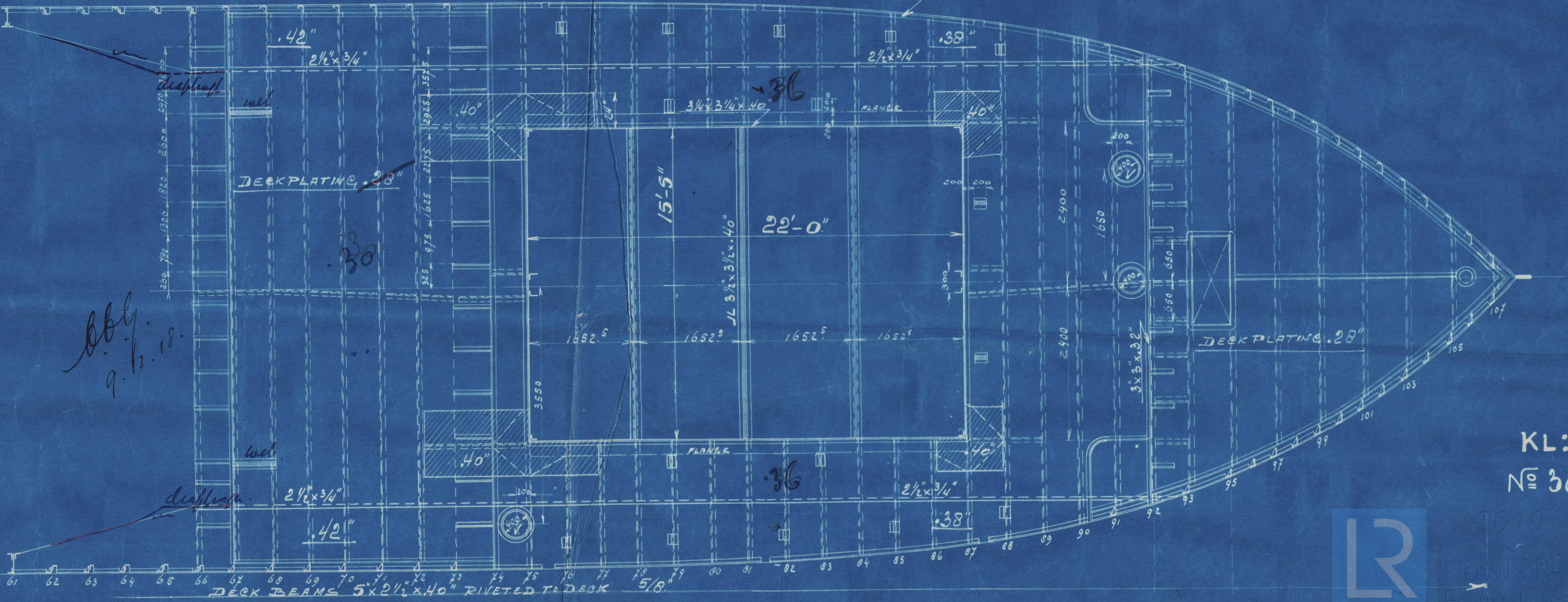
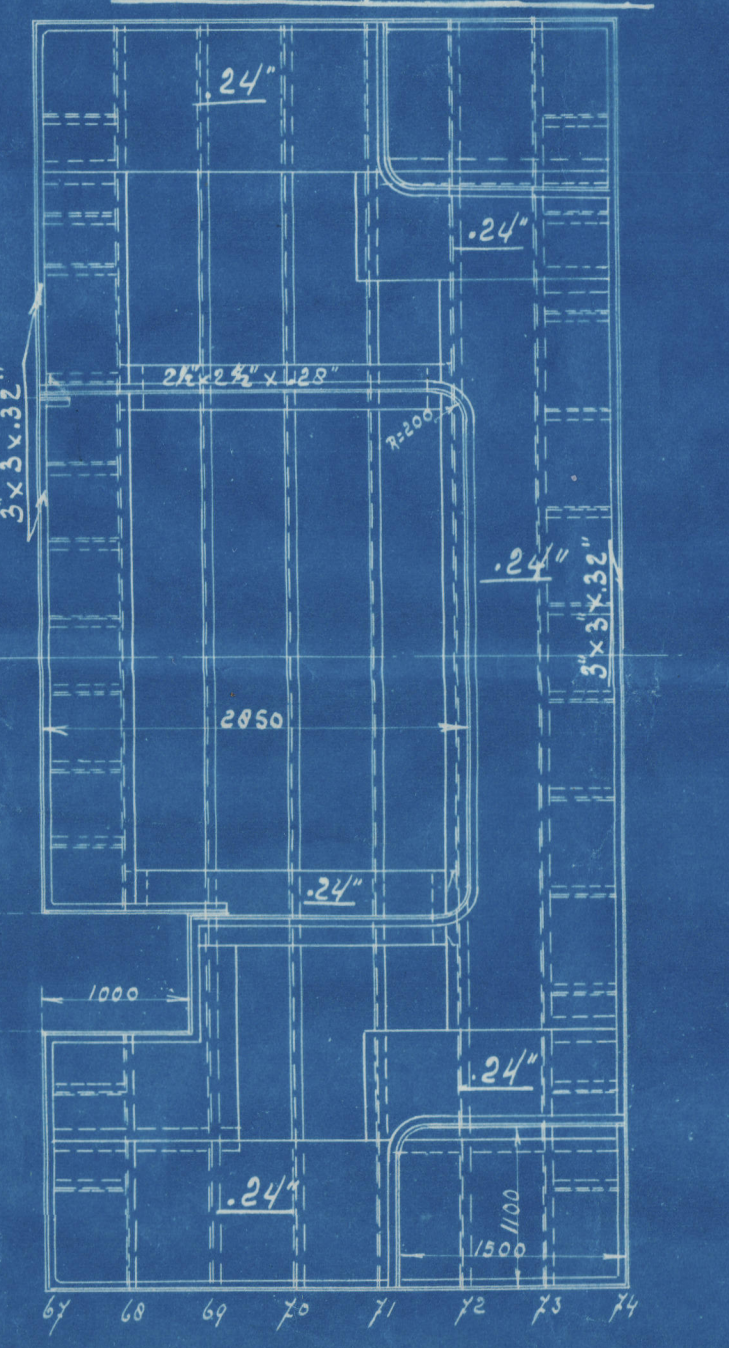
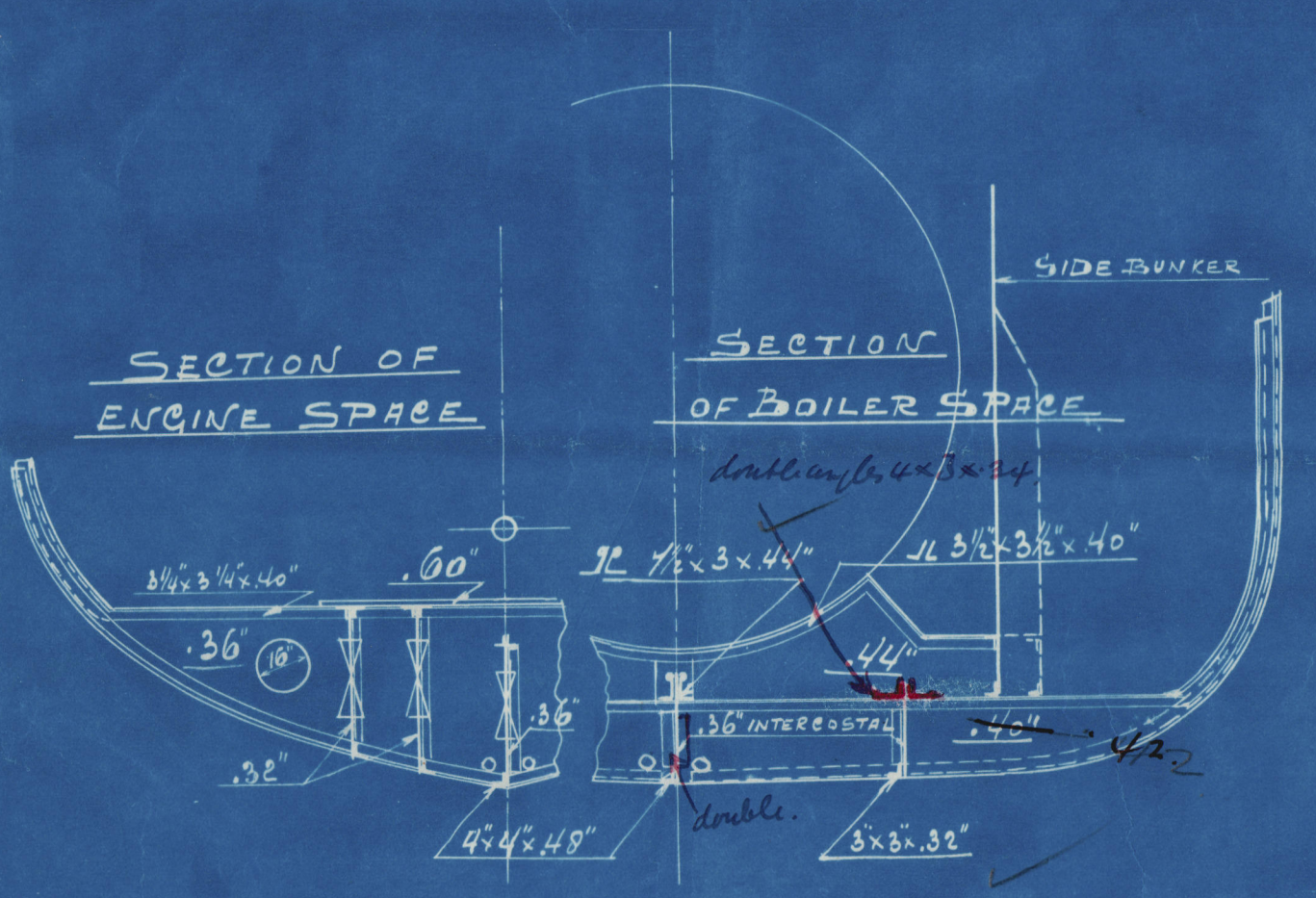
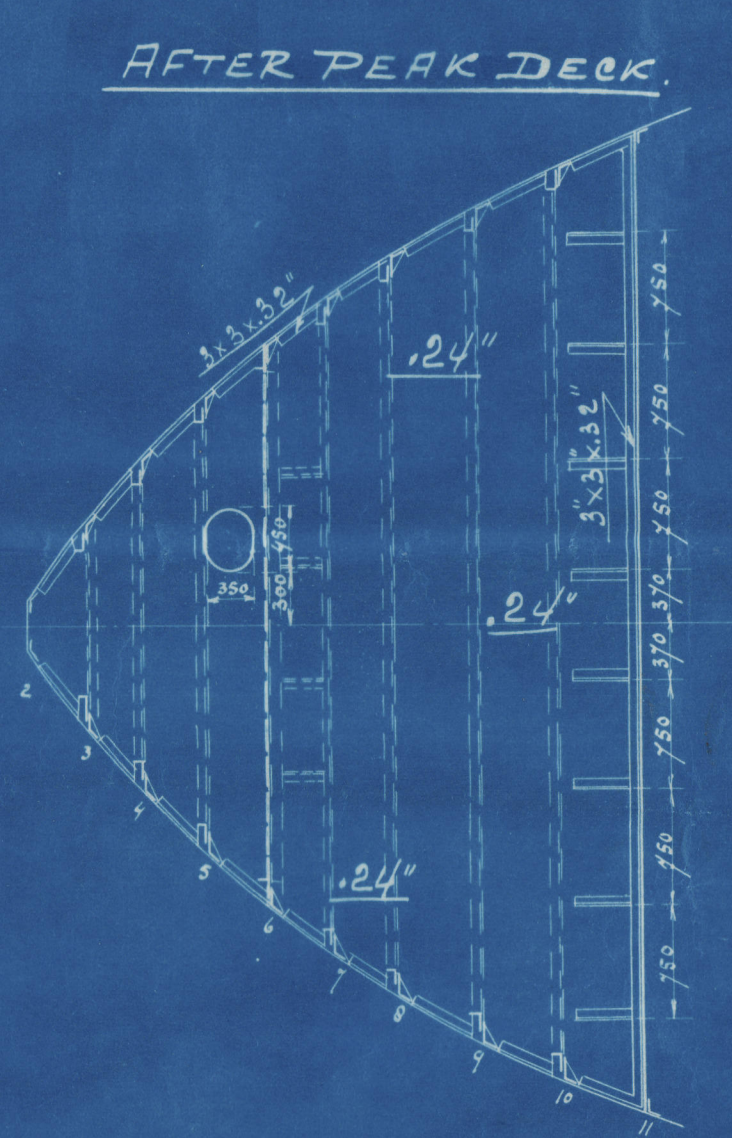
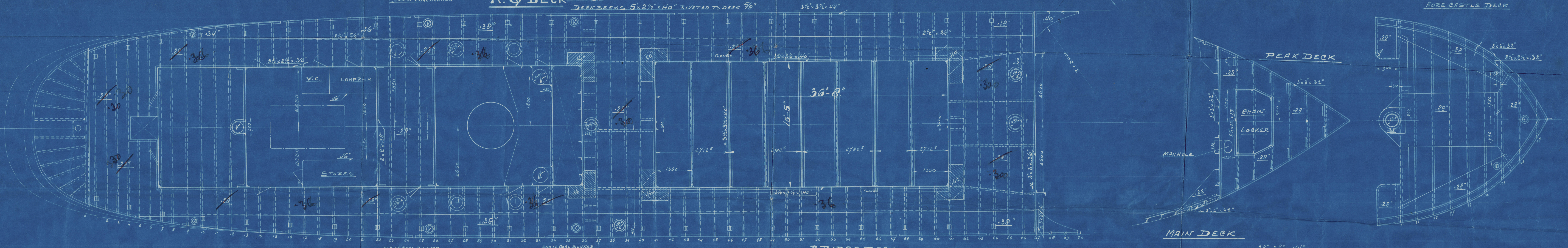
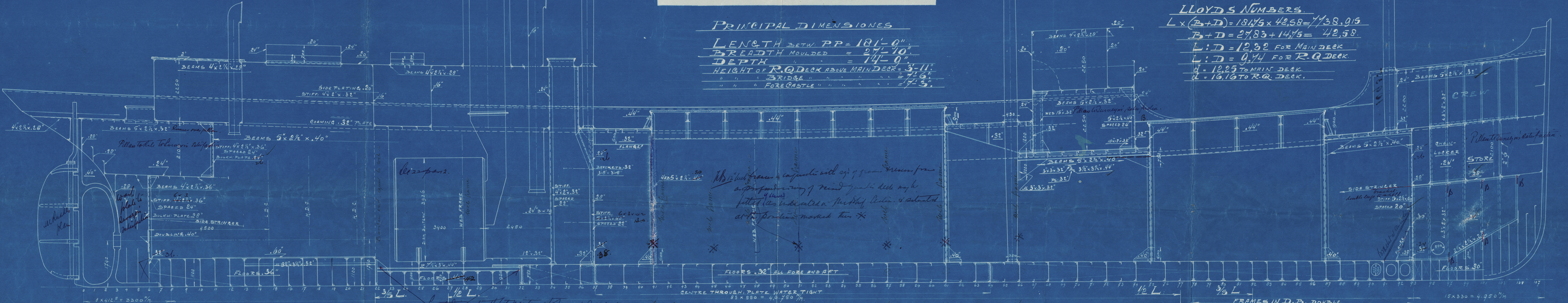
LONGITUDINAL PLAN OF $\frac{5}{8}$. 303.

BUILT OF STEEL
CLASSED \times 100.A.I. LLOYD'S REG.
SCALE 1:50.

PRINCIPAL DIMENSIONS

LENGTH BETW. P.P. = 181'-0"
BREADTH MOULDED = 27'-10"
DEPTH = 14'-0"
HEIGHT OF R.Q. DECK ABOVE MAIN DECK = 3'-11"
" " " BRIDGE " " " = 7'-6"
" " " FORE CASTLE " " " = 17'-3"

LLOYD'S NUMBERS
 $L \times (B+D) = 181\frac{1}{2} \times 42.58 = 7738.915$
 $B+D = 27.83 + 14.75 = 42.58$
 $L:D = 12.32$ FOR MAIN DECK
 $L:D = 9.44$ FOR R.Q. DECK
 $Q = 12.25$ TO MAIN DECK
 $Q = 16.16$ TO R.Q. DECK.



KL: 118.
№ 30302.

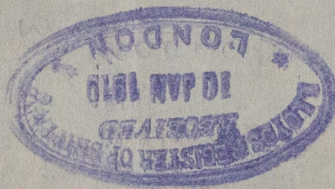


S/S "Estella"

Profile and Decks.

Rotterdam

Report no. ~~10935~~
10953



RETAIN

W647-0255



© 2019

Lloyd's Register
Foundation