



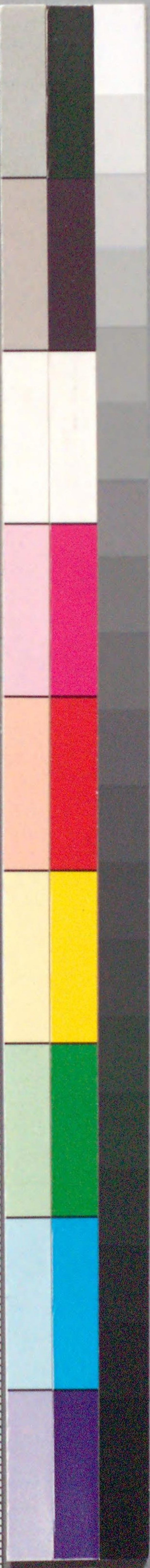
208
15
700

花

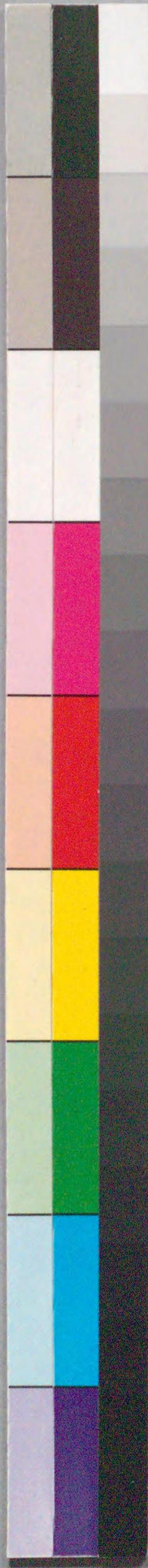
籠

5編

国立国会図書館 花籠 5編 208-700



ガラス使用



国立国会図書館 花筐 5編 208-700

ガラス使用



花の匂は美しき御座り
 世の福人胡蝶
 今月も佳しき御座り
 文を讀むは世の福なり



Handwritten Japanese text in cursive style (sōsho) on the left page. The text is arranged in vertical columns and includes decorative green circular motifs interspersed within the writing.

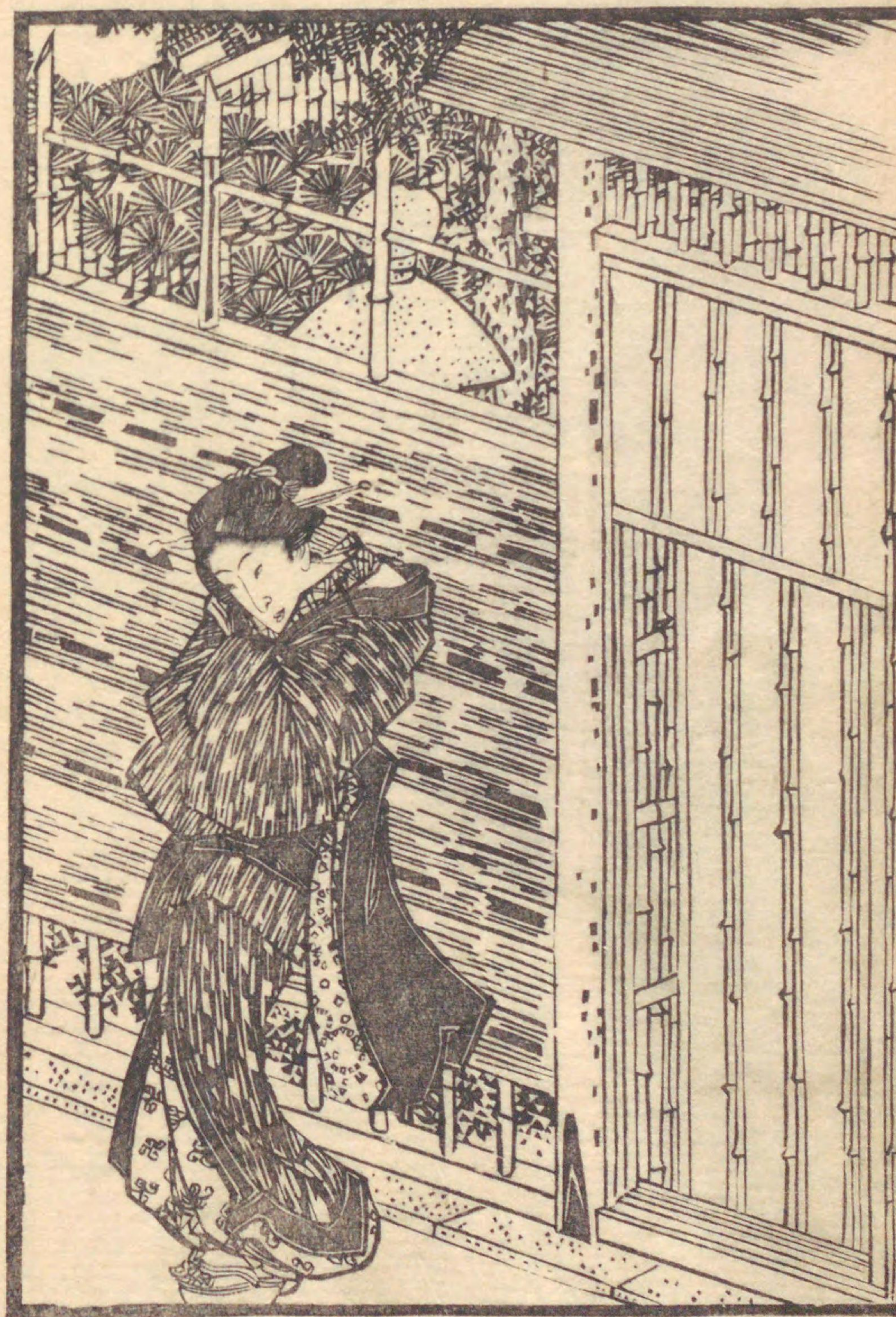
Handwritten Japanese text in cursive style (sōsho) on the right page. The text is arranged in vertical columns and includes decorative green circular motifs interspersed within the writing.

Vertical text or signature located between the two pages, written in a smaller hand.









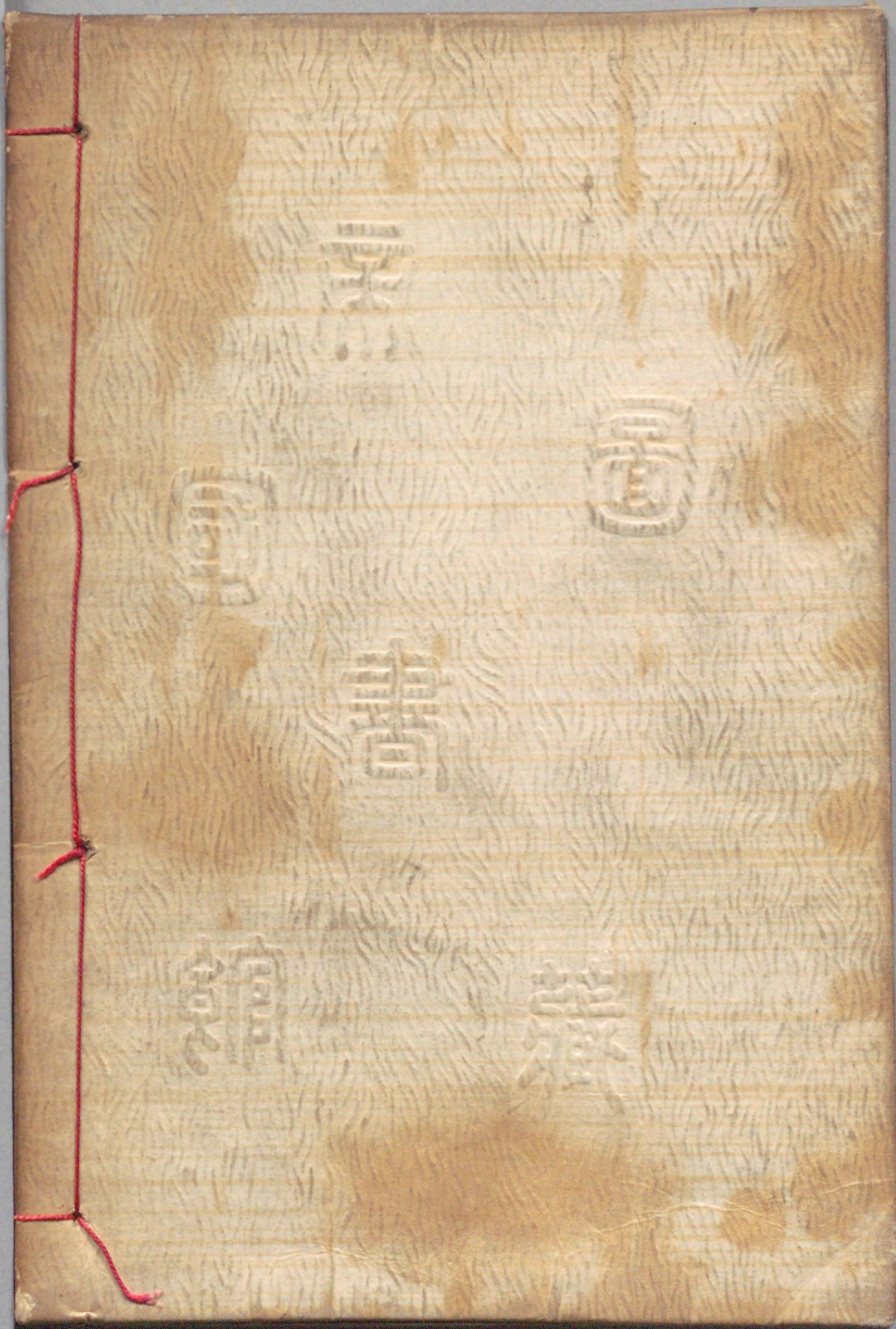
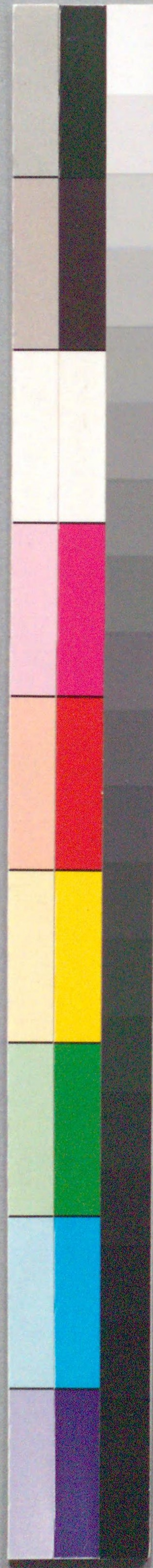


208
15
700

国立国会図書館 花筐 5編 208-700

ガラス使用





国立国会図書館 花筐 5編 208-700

ガラス使用