

Historic, archived document

Do not assume content reflects current scientific knowledge, policies, or practices.



Aster, Star of Wartburg
[see page 4]

The Original

Barnes Bros. Nursery Co.

ESTABLISHED 1890

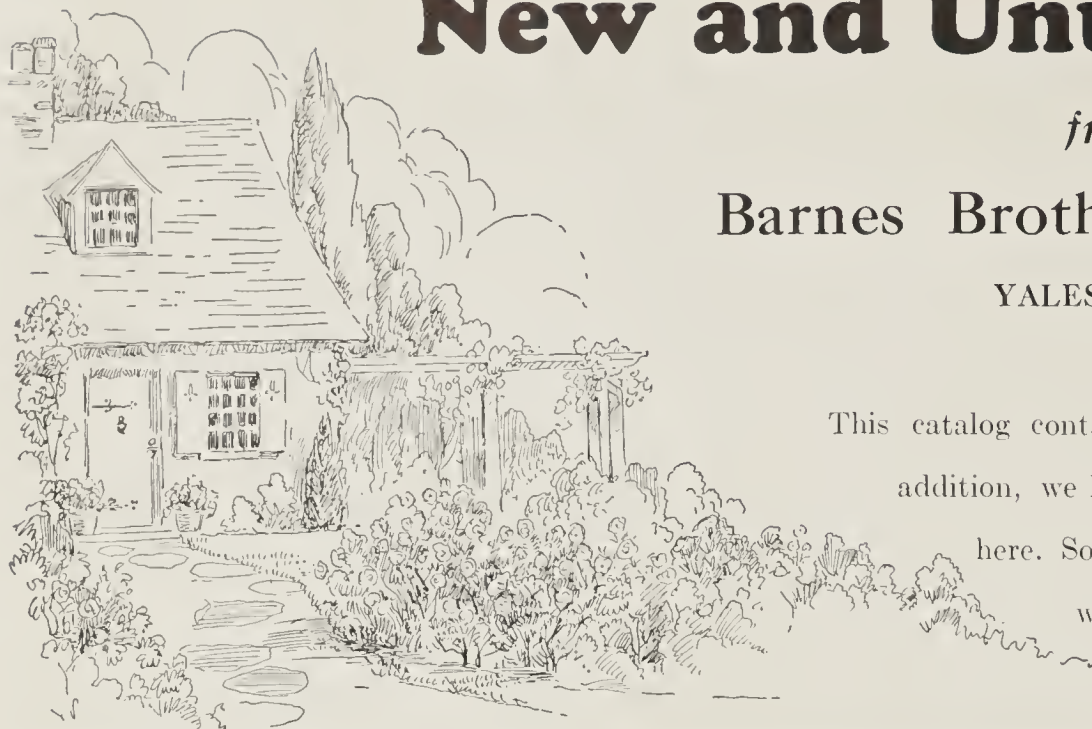
Office and Salesgrounds • YALESVILLE, CONN.

New and Unusual Plants

from the

Barnes Brothers Nursery Co.

YALESVILLE, CONN.



This catalog contains our special offers for Spring, 1937. In addition, we have a wide selection of plants not described here. So if you do not find what you are seeking, write us for a copy of our GENERAL PRICE LIST. It's free upon request.

I N D E X

	Page		Page
Fruits.....	12-16	Shrubs.....	7-9
Hedge Plants.....	9	Trees.....	11
Perennials.....	3-6	Vines.....	9
Roses.....	10		

FOR SPRING 1937

TERMS—Net Cash. We will ship orders C. O. D., providing twenty-five per cent of total amount is sent with order.

ORDER EARLY—Order immediately, if possible. Late orders are subject to the hazards of being handled in a rush. Moreover, some varieties or sizes may be sold out, causing disappointment.

NON-WARRANTY—(1) If any nursery stock shall prove untrue to the label under which it is sold, provided notice and proper proof thereof are furnished by the purchaser to the seller, the seller shall, at the option of the purchaser, either refill that portion of the order, which was mislabeled, by another delivery of stock, or refund the purchase price; but in any case, we are not to be held responsible for a sum greater than the original selling price of such stock. (2) All sales or agreements of sale are made subject to shortage of nursery stock, fire, frost, floods, drought, or other causes beyond the control of the seller.

TRANSPORTATION CONDITIONS—All goods, unless otherwise specified, are sold F. O. B. our nursery and travel at the purchaser's risk and expense. Where a customer is resident within 25 miles of our nursery, we shall be glad to deliver plants without charge on such days as we have trucks in that particular section. We cannot deliver on specific days or at particular hours.

PLANTS BY MAIL—Small orders can be sent by mail, but they will not be sent prepaid unless you add to your remittance, 10% of the catalog price to cover postage and special packing. (Minimum charge, 10c).

SUNDAY HOURS—This nursery will be open on Sundays during April and May.

GUARANTEE—Prices do not include any guarantee of growth. However, if any of the plants purchased from us this spring should fail to grow, notify us not later than July 1st, 1937, and we will replace the stock free. After July 1st, we will replace at half price.

CLAIMS—If there are any claims, they must be made on receipt of goods. Any error of ours will be promptly and satisfactorily adjusted. Claims made after ten days from receipt of goods, cannot be considered. We ship only best grades of stock and use great care in packing.

INSPECTION—Our nurseries are regularly and thoroughly inspected by the Connecticut Experiment Station and found apparently free from injurious insects and diseases.

LOCATION—Our nursery is located on the East side of the Boston Post Road, Route 5, three miles south of Meriden, two miles north of Wallingford. Buses of the New England Transportation Company pass our office.

Mail Your Order **TODAY!**

New and Unusual Perennials

Many of these perennials are exceedingly new and scarce. While we do not claim to grow every new perennial, we do maintain that our list of the better new perennials is far in advance of most lists and that there are outstanding varieties described below which you cannot buy elsewhere in the United States this year. All items offered have been grown and tested in our own nurseries.

The prices of each variety is indicated with description.

Where the price is 25c each, 3 of the same kind are 60c, 12 of the same kind are \$2.25.

Where the price is 35c each, 3 of the same kind are 90c.

Where the price is 50c each, 3 of the same kind are \$1.35.

Small orders can be sent by mail but will be sent "Not Prepaid" unless you add to your remittance 10% of the price to cover postage and special packing. (Minimum charge 10 cents.)

Aquilegia Pearson's Crimson Star (Columbine)—A combination of scarlet and white. Introduced by the ancient firm of J. R. Pearson and Son of England several years ago. Pearson's Crimson Star is one of the most beautifully colored of all the new Columbines. The sepals and spurs of the large flowers are of the richest crimson while the petals are pure white—a striking contrast of colors. 25c; 3 for 60c.

Aquilegia longissima—Has flower spurs nearly a half a foot long. An elusive Californian native first disseminated by the Blakesley Botanical Garden of Santa Barbara, Calif. Growing to the height of about 24" it blooms freely in June and July. The most attractive feature of the pale yellow flowers is the grace with which they bear their almost unbelievably long spurs—five inches being the average spur length. The plants are perfectly hardy and will do well in any ordinary garden soil. 75c each.

Our General List Offers Many Other Varieties of Aquilegias

Armeria formosa, New Large Flowered Hybrids (Sea Pink)—Bring really bright colors to this faded family. Low growing perennials with tufts of grass-like leaves from which the globular heads of flowers arise on wiry stems to the height of 15-18". Where the old types were pale pink, those of the new hybrids come in all shades of pink, red, and well into the purple. Blossoms from June until frost with the height of the blooming season in July. 25c; 3 for 60c.

DWARF HARDY ASTERS

This is a race, recently originated in Europe, of absolutely hardy, low growing Asters, very beautiful and useful. Their abundance of bloom and neat, restricted growing habit rapidly brought them to the attention of growers throughout the world. Each plant forms an individual clump ten to fifteen inches high and at least as broad. In the fall they burst into sheets of bloom so dense that hardly a leaf shows through the flowers. To our list of six of the original European hybrids we are adding three new American varieties of great merit—Lilac Time, Hebe, and Niobe.

Countess of Dudley—1'. Very deep pink. Latest to bloom. Sept. into Oct. 25c; 3 for 60c.

Lady Henry Maddocks—1'. Light pink. The flowers of this variety are very narrow petaled and star-like. Blooms from mid-Sept. until the first of Oct. 25c; 3 for 60c.

Marjorie—10". Bright pink. Blooms from mid-Sept. until first of Oct. 25c; 3 for 60c.

Hebe—8-10". Very compact deep pink. Blooms Sept. 35c; 3 for 90c.

Lilac Time—12-15". One of the finest. Soft lilac and very prolific bloomer. Blooms Sept.-Oct. 35c; 3 for 90c.

Nancy—10". Pale pink. Very low and broad. Blooms mid-Sept. until Oct. 25c; 3 for 60c.

Niobe—10". The best white. Low and compact. Blooms Sept.-Oct. 35c; 3 for 90c.

Ronald—1'. Clear lavender. Mid-Sept. until Oct. 25c; 3 for 60c.

Victor—10". Light blue. First to bloom. Late August until mid-Sept. 25c; 3 for 60c.



Aquilegia longissima



Cheiranthus allonii (see page 4)

FALL FLOWERING HARDY ASTERS (NOVI-BELGI)

The newly developed varieties coming in delightful shades offer many possibilities for late summer color combinations. These Asters will grow in any soil provided they receive abundant sunshine.

NEW INTRODUCTIONS FOR 1937

We are offering for the first time three outstanding new varieties imported from Ernest Ballard of England, originator of some of the world's finest Hardy Aster varieties.

Blue Plume—3'. Without question the deepest and truest blue of the blue Asters. It has clearly shown its superior coloring when directly compared with the popular Blue Eyes and Royal Blue, both of which are grown at this nursery. This Aster is semi-double. 50c; 3 for \$1.35.

Radiance—3'. Another of Mr. Ballard's recent introductions and the best of any pink we have grown. A large, semi-double deep pink Aster with a bright golden center. 50c; 3 for \$1.35.

Mammoth—4-5'. Mr. Ballard rates this as the largest flowered Aster he has ever introduced. The huge flowers are of a pure pearl grey. When newly opened the inner petals curl over the center, giving the flower a very double appearance. An outstanding Aster of a most unusual color. 50c; 3 for \$1.35.

OTHER LEADING VARIETIES

Charles Wilson—3'. We find this a very good deep pink—some prefer it to Red Rover and class it as a red. 35c; 3 for 90c.

Little Boy Blue—18-24". The most free flowering of any Aster. A medium height variety and the first to bloom. In flower the plants make a two foot mound of bright blue. 35c; 3 for 90c.

Little Pink Lady—18-24". A companion plant to Little Boy Blue. The same semi-dwarf type of growth, but pink in color. 35c; 3 for 90c.

Mt. Everest—4-5'. The finest white hardy Aster. Forms glistening pyramids of pure white large double Asters with a very small golden eye. 35c; 3 for 90c.

Red Rover—3-4'. The nearest approach to a pure red. Deep rose-red double flowers with golden centers. Small but produced in profusion. 35c; 3 for 90c.

We are offering above only the Cream of our Extensive Aster Collection. If you wish other varieties, many of them lower in price, please send for our General Price List in which a very complete collection of varieties is offered.

You will find a long list of Garden Chrysanthemums in our General Price List. Send for it.

Aster subcaeruleus, Wartburg Star—2'. A giant from the Spring Aster group. A new, giant flowered member of the subcaeruleus or Spring Flowering Aster group. Like others of its family, it forms rosettes of leaves at the surface of the ground from which shoot up 18-24" stems bearing big lavender-blue marguerites 3-4" across. An exceedingly fine cut flower and a subject for either the border or rock garden. Our stock is cutting raised from imported plants and is true to name. Seedlings of Wartburg Star do not come true. 50c; 3 for \$1.35.

Aster frikarti (Wonder of Staefa)—2-2½'. An Aster that flowers all summer. Aster frikarti forms a low bushy growth about which large wisteria-violet Asters are plentifully scattered throughout the summer and fall. The quantities of flowers gradually increase until the flowering peak is reached in early autumn. This variety will furnish cut flowers from July until freezing weather begins. 50c; 3 for \$1.35.

Cheiranthus allionii, Golden Bedder (Golden Siberian Wallflower)—12-15". A new color for an old favorite. Being a clear lemon-yellow instead of the well known orange of the always popular Siberian Wallflower, this new variety will no doubt be more useful in many garden color schemes than the old Cheiranthus allionii. Field grown clumps of this biennial do not transplant well so we are offering the variety in 3" pots only. 35c; 3 for 90c.

Chrysanthemum maximum, Esther Read—2'. The first really double Chrysanthemum maximum. Throughout the past year nurserymen and florists visiting across the Atlantic have come home to speak or write enthusiastically of the outstanding perennial in Europe today—Chrysanthemum Esther Read—which has been blooming here in our nursery for the past two years to the delight of those who have been privileged to see it. We now have sufficient stock to offer the plants to our customers.

Esther Read is a daisy—many will call it a Shasta Daisy—pure white in color and so double that it has no golden center at all, the whole flower head being taken up with petals laying, one neatly overlapping row after another, to the very center of the bloom. The plant is an exceedingly prolific bloomer, in fact it has shown a tendency here to bloom itself to death if some of the daisies are not picked to relieve the plant of the drain of energy used up in its flowering efforts. Esther Read will probably be classed as the foremost white cut flower in the gardens of tomorrow. \$1.25 each.

Delphinium

There is no need of describing these plants. We have, as usual, tried to grow only the finest of the many strains on the market today.

Delphinium belladonna, Cliveden Beauty—5'. The universally recognized improvement over the old light blue hardy Larkspur. Its clear turquoise blue coloring, larger flowers and more sturdy growth serve to make it the finest light blue belladonna variety. 25c; 3 for 60c.

Delphinium belladonna, Blue Grotto—5'. A new, very dark blue Larkspur which is as much of an improvement over D. bellamosum as Cliveden Beauty is over belladonna. Very large flowers of even coloring. 25c; 3 for 60c.

Delphinium Hybrids

Pudor's Prize Winning Strain—5'. A fine American strain of double mixed hybrids. We have noted that this strain tends to produce especially fine lavender and light blue shades, most of which are very double. 25c; 3 for 60c.

Benary's Hybrids—A German strain which we have carried for several years, importing fresh seed each year. The colors are always good, running from the dark blues and purples to pale lavender and azure. Mostly double. 25c; 3 for 60c.

Benary's Hollyhock Strain—A reliable strain of very large double Delphinium. This mixture produces especially good blues. 25c; 3 for 60c.

Delphinium Hoodacres Whites—These are pure glistening whites from true Hoodacres seed, and are far superior to Iceberg and Summer Cloud, now generally on the market. The plants we offer are two year old clumps which have flowered and were carefully checked here at the nursery. \$3.00 each.

Dianthus, Rose Unique—15". In introducing this new hardy carnation we offered a decided improvement over previous hardy varieties in beauty, hardness and habit. Rose Unique is a large flowered, deep pink, fully double carnation with broad, robust blue-green foliage. It has the valuable trait of blooming its spicely fragrant flowers from early summer until, with buds still unfolded, the real hard freezes of late fall put an end to its activities. 50c; 3 for \$1.35.

Gaillardia grandiflora (Blanket Flower)—The three Gaillardias listed below have no equals.

Barnes Ruby—This is one of the finest plants we have ever had the pleasure of introducing. Barnes Ruby is a brilliant ruby-red Gaillardia, having no hint of yellow or brown in its make-up. Blooming all summer long as do few other perennials, its vivid flowers make a continuous showing and furnish abundant cut flowers as well. This Gaillardia looks best in groups. Our plants are all cutting grown. 50c; 3 for \$1.35.

Goblin—An elfin Gaillardia forming low mounds 12-15" across and 8-10" high. Throughout the summer they are a mass of beautiful two colored Blanket Flowers, bright yellow zoned with deep red, which almost hide the foliage. Blooms from July till freezing weather 50c; 3 for \$1.35.

Mr. Sherbrook—This is an English variety. The full, circular flowers are of a rich golden yellow with pale yellow center, unstained by any other color. The large, self-colored blooms, supported by stout stems above the pale green foliage, continue from early summer until late into the fall. In common with every other Gaillardia grand, it is so unmindful of the hardships of heat, dryness and poor soil that it is hard to imagine anyone having difficulty with it as long as it receives its share of sunlight. Our stock is cutting grown. 50c; 3 for \$1.35.

Gentiana purdomi—Gentians produce the truest blue flowers of all hardy perennials. The members of this family are not ordinarily easy to grow, but after several years of trial in various locations we find Gentiana purdomi as easy to handle as any ordinary perennial. We grew it in a dry, scorching hot, sandy place where few plants would live and also in a heavy, fairly moist soil and it did equally well in both situations. Plant it and let it alone, do not baby it, do not disturb it. Gentiana purdomi is a trailing plant which, in mid-summer sends out many clear dark blue trumpets along the procumbent stems. Here is a plant of a family generally cultivated only by experts, which will bring the vivid Gentian blues into your own garden, even though you may not know a great deal about perennial culture. 35c; 3 for 90c.



Geum, Orange Prince

Geum (Avens)—Geums form a tufted growth of pinnate leaves from which flower stems of showy blooms arise throughout most of the summer.

Fire Opal—3'. Generally recognized as the finest Geum. 2-3" blossoms of orange-scarlet with overlaid opal sheen produced in abundance in July and August. We have seen single plants with nearly one hundred flowers open at one time. Perfectly hardy. 50c; 3 for \$1.35.

Lady Strathedon—3'. The well known double golden yellow. 25c; 3 for 60c.

Mrs. Bradshaw—3'. The old but excellent double fiery orange-red. 25c; 3 for 60c.

Orange Prince—3'. A fine new deep orange. Very large flowers. 35c; 3 for 90c.

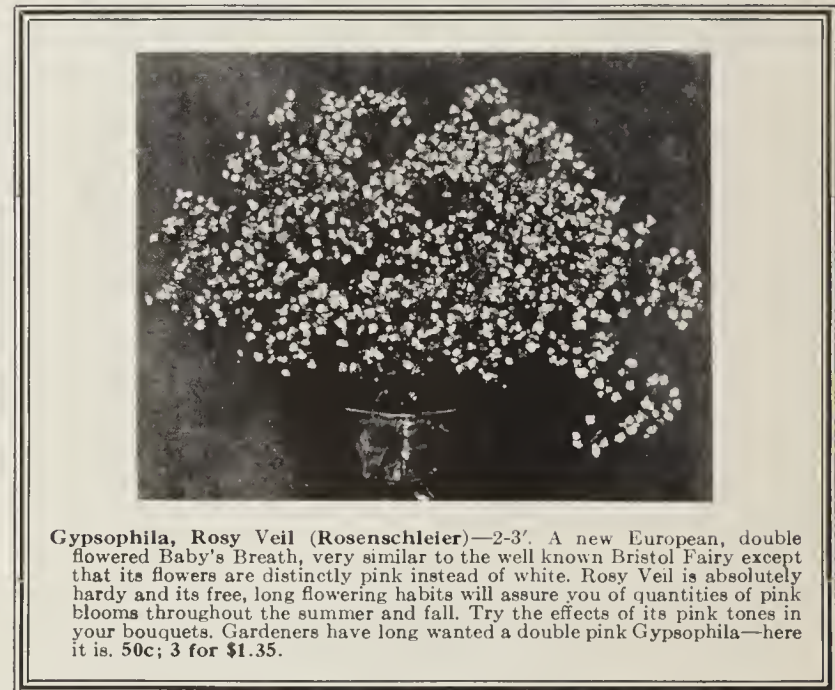
Rijnstroom—3'. A new imported Geum much like Fire Opal in growth, having large orange-yellow blooms. We offer it for the first time. 75c each.

Sibericum—12-15". Fiery orange-scarlet little species. It will make a hot spot in your rock garden from April till November. 50c; 3 for \$1.35.

Note—No Geum flowers well until it has been established for two years.

Gypsophila paniculata, Bristol Fairy—This well known variety needs no introduction. Large panicles of double white flowers in early summer. Almost a necessity in bouquet making. 50c; 3 for \$1.35.

Gypsophila oldhamiana—2-3'. A new hardy pink Japanese variety of Baby's Breath. Growing in much the same manner as the old-fashioned Baby's Breath (G. paniculata) it spreads its large panicles of pale pink, lacy flowers late in the fall, long after G. paniculata has gone to seed. You will admire the airy grace of its clouds of pink blooms and find it a valuable filler for your September and October bouquets. 35c; 3 for 90c.



Gypsophila, Rosy Veil (Rosenschleier)—2-3'. A new European, double flowered Baby's Breath, very similar to the well known Bristol Fairy except that its flowers are distinctly pink instead of white. Rosy Veil is absolutely hardy and its free, long flowering habits will assure you of quantities of pink blooms throughout the summer and fall. Try the effects of its pink tones in your bouquets. Gardeners have long wanted a double pink Gypsophila—here it is. 50c; 3 for \$1.35.

Iberis jucunda (Perennial Candytuft)—4-6". A pink hardy Candytuft with silver-blue leaves. A pretty dwarf pink Candytuft with attractive silver-blue evergreen foliage. Throughout the winter the low tufts of leaves peep out among the snowdrifts in all the gleaming blue of the Colorado Blue Spruce. With the warmth of the early summer come the close clusters of bright pink flowers. Iberis jucunda has withstood temperatures of -20 F. at this nursery without protection. 25c; 3 for 60c.

Heuchera (Coral Bells)—At last a set of Coral Bells worth growing. We are pleased to offer eight fine new Coral Bells which we imported some time ago from Bloom's Nurseries, England, probably the world's foremost originators and growers of fine Heucheras. The Heuchera family has long been neglected. Except for two or three time worn old red and pink favorites, the Coral Bells usually grown are dull in color and small in flower and hardly worth the space they occupy in the garden. You will find these new Heucheras altogether different. They are bright and clear in color with large bells, long sturdy stems and highly ornamental foliage. They are the results of crossing the two types of Heuchera, sanguinea and brizoides, and have the free flowering qualities of the former, combined with the larger flowers and more brilliant coloring of the latter.

Heuchera brizoides section—Those which favor their brizoides parent.

Bloom's Variety—Produces long sprays, each bearing dozens of dainty coral-red bells. A two year old plant of this variety will often produce as many as 80 flowering stems.

Mary Rose—Profusion of clear pink flowers. Very neat habit.

Heuchera sanguinea section—These varieties more clearly resemble their sanguinea parent.

Freedom—Light rose.

Garnet—Very large flowers of deep pink.

Jubilee—A greatly improved Heuchera Edge Hall. The flowers being half as large again and of a glistening rose-pink. More freely produced.

Oakington Jewel—Deep coral-red tinged copper. Very ornamental bronzy foliage.

Scarlet Beauty—A cascade of flaming scarlet bells.

Snowflake—A pure white. The only white Heuchera we have ever seen worth growing.

\$1.00 each; \$6.00 for a set of 1 each of the 8 new varieties.

Garden Lilies

Lilium concolor (Morning Star Lily)—18". A low growing Lily with single flaming red flowers. Plant bulbs (which are small) 5" deep. 35c; 3 for 90c.

Lilium canadensis—3'. A handsome native lily. Blooms are yellow and orange spotted maroon. Hanging bell shaped flowers. Plant bulbs 5" deep. 25c; 3 for 60c.

Lilium regale (Regal Lily)—4-5'. Beautiful, fragrant white trumpets with a sulphur-yellow suffusion in the throat. Plant bulbs 9" deep. 25c; 3 for 60c.

Lilium tenuifolium—18-24". A narrow leaved, slender growing little lily having numerous deep scarlet recurved flowers on wiry stems. Plant bulbs 6" deep. 25c; 3 for 60c.



Lilium concolor

TWO UNUSUAL AND ATTRACTIVE BULBOUS PLANTS

Hardy Amaryllis (Lycoris squamigera)—The habits of this bulbous plant are as unusual as its flower is attractive. In the spring, soon after the bulb is planted, a clump of strap-like leaves appear and grow vigorously until July when they begin to yellow and eventually dry up completely. In August shoots appear from the apparently dead plants, rise to the height of about 2½' and break into clusters of rose-lilac lily-like flowers, each of which averages about 3" in length. Protected in winter with a light covering of salt hay or evergreen boughs, these plants increase in size and beauty each year. You will find them an unusual and beautiful addition to your garden. **\$1.00 each.**

Star of Bethlehem (Ornithogalum umbellatum)—An old time bulbous plant overlooked by present day growers. This little lily sends up tufts of grass-like leaves, margined white, through which clusters of inch wide white lilies thrust their way in June. The foliage dies completely to the ground in later summer. These plants are entirely hardy and live on for years, forming dense drifts of snowy white under apple trees or in the bays of the shrub borders. A fine edging plant for the perennial border. 35c; 3 for 90c.

Lobelia hybrid, Illumination (Cardinal Flower)—2-3'. Spikes of flowers so brilliantly colored as to be dazzling in the sunlight. Probably the most highly colored of any hardy perennial, these fine new hybrids produce 3' scapes of large glossy scarlet flowers, strikingly set off by the dark purplish-red foliage. Illumination, true to its name, will prove the August high color spot in any garden. 50c; 3 for \$1.35.

Mertensia virginica (Virginia Cowslip)—15". The well known and very popular early spring flowering Mertensia. This plant succeeds well in full or partial shade, blooming its clusters of blue flowers, fading to pink, in the early spring. 25c; 3 for 60c.



Myosotis, Pink Beauty

Myosotis palustris, Pearl of Ronnenberg (Forget-me-not)—The everblooming blue Forget-me-not. An improved variety of the dainty, beloved Forget-me-not. Grows equally well beside the water or in the garden and makes an especially attractive ground cover in the tulip bed. 25c; 3 for 60c.

Myosotis palustris roseus, Pink Beauty (Pink-flowered Forget-me-not)—We are introducing this Myosotis for the first time as a real improvement over the ordinary roseus. Pink Beauty has clusters of large deep pink Forget-me-nots borne continuously throughout the summer. When used in conjunction with the blue Pearl of Ronnenberg, you will find the color combination a pleasing one. Our plants of this variety are cutting raised and guaranteed true to name. We ship potted plants only. 25c; 3 for 60c.

Phlox arendsii—18". This useful race of low growing hybrid Phlox is the result of crosses between Phlox divaricata and Phlox paniculata. To be sure the colors are rather quiet—pinks and lavenders—but what is more tiresome than a planting made up entirely of blossoms of brilliant colors? No, these plants of the somber hues have their places. Beginning with the advent of summer and continuing till fall they drape their dense mounds of dark green foliage with panicles of blossoms.

Kathe—Purple-rose with dark eye. 35c; 3 for 90c.

Marianne—Dark bluish violet. 35c; 3 for 90c.

Phlox subuiata (Moss Pink)—Two outstanding new Moss Pinks.

Brilliant (atropurpureum)—A creeping Phlox belonging to the same group as the very common "Moss Pink," that sheet of pink which may be purchased by the square yard at almost any roadside stand in the spring. Brilliant has the same desirable characteristics of rapid growth and extreme hardiness possessed by the "Moss Pink," but spreads its carpet of bloom in an entirely new color, deep red, much like that of the old B. Compte Phlox. This is a color almost entirely lacking in the garden in early spring. 25c; 3 for 60c.

Camlaensis—This is an English Phlox subulata, introduced by Mr. Millard and is generally considered one of the finest of the now very extensive list of new "Moss Pink" varieties. The plant is very neat and compact in growth and the large salmon-pink flowers are not only borne in masses in the spring, but also in smaller quantities throughout the summer and fall. We highly recommend this variety. 50c; 3 for \$1.35.

See also Special Hardy Garden Phlox Collection,
Page 6

PERENNIAL COLLECTIONS

Do you realize that one of the fundamental principles for making a beautiful and artistic perennial border is to have, not only a succession of bloom through the season, but a succession of dominance of color or varieties? This can be accomplished only by planting in masses.

A well planned border will give you greater joy and satisfaction, and to further this, we are offering several varieties of border perennials at GREATLY REDUCED PRICES when purchased in larger quantities.

Aquilegia Collection

Aquilegia Collection—Dobbie's Imperial Hybrids—No spring blooming garden flower is more popular than the Columbine. We have therefore chosen it as one of the varieties to make a moderately priced collection. The Scottish firm of Dobbie grow what are generally conceded to be the finest Long Spurred Aquilegias in the world today. Lovely pastels—yellow, lavender, pink, violet, blue, copper, red—combinations of the same and all of them on stout, wiry stems of clean, vigorous plants. Yearly we import seed directly from this firm in Scotland. We offer you true, fine strong two year plants of Dobbie's Imperial Hybrids in mixture. Plant a group of them in your garden.

Pink Aquilegia Collection

Pink Aquilegia Collection—Pearson's Pink Shades—Many people particularly admire pink Long Spurred Columbines. The firm of J. R. Pearson of England, famous for their Aquilegia Pearson's Crimson Star, offered elsewhere in this catalog, also produce a very fine strain of pink Aquilegia hybrids. The two year plants which we are offering in this collection are from seed imported by us directly from this English firm.

Garden Phlox Collection

Garden Phlox Collection—No plant in a modern garden can equal the vivid display put on by the Hardy Phlox. Almost overnight the flower buds burst wide open, flinging out their panicles of crimson and scarlet blossoms, together with the glistening pink and salmon, pure silvery white and here and there a lavender-blue, clothing the garden in a sheet of riotous color for a month or more. Our collection has been carefully chosen from the confusing array of varieties now on the market. There is not a second rate Phlox on the list.

Foxglove Collection

Foxglove Collection—We are offering a wide range of colors in these fine old garden favorites at a price within the reach of everyone.

Giant Shirley Mixed—5'. Large flowered strain in mixture of pink, white and cream.

Isabellina—3-4'. A lovely cream-yellow. Probably the nicest of all Foxgloves.

Sutton's Giant Primrose—5'. Primrose yellow.

Sutton's Pink and Cream—5'. A fine mixture of pink and cream shades.

Dobbie's Edina Mimulus Spotted Hybrids—5'. A Scotch mixture.

Ambigua (grandiflora)—2-3'. A true perennial sulphur-yellow Foxglove.

Hollyhock Collection

Hollyhock Collection—Chater's Doubles—There is no finer strain of Hollyhocks than Chater's. *Please note the following*—Our Hollyhocks are all transplanted plants. Many Hollyhocks are grown by drilling out the seed in rows and leaving the plants undisturbed until they are dug to be shipped. Such plants have one long tap root and very few fibrous roots. Our plants are started in a seed bed and transplanted into the field. As any gardener knows, transplanting increases the root system and retards the growth of tap roots. Thus our plants with a fine root system are able to stand the shipping and transplanting into your garden with much less loss, or setback than tap rooted plants. Try our Hollyhocks and note the vigorous growth they make.

Chater's Double maroon, Newport Pink, salmon, rose, scarlet, white, yellow.

Shasta Daisy Collection

Shasta Daisy Collection—We offer the three strains of Diener's Shasta Daisies, double, semi-double and single in mixture. From June until frost, on long sturdy stems the pure white daisies come, one after another in continuous succession. In this mixture you will find daisies with long petals and short ones, broad petals and narrow ones, single daisies, semi-double ones, daisies with so many petals that they look like large powder puffs—there seems no end to flower types in these hybrids. The culture of Shasta Daisies is simple—just sunlight, a well fertilized bed and a little straw mulch in locations where the temperature goes below zero.

Viola Cornuta Collection

Viola cornuta Collection (Tufted Pansies)—Continuously flowering from spring till frost.

Apricot Queen—Large apricot, **Jersey Gem**—Violet purple, **White Perfection**—White, **Yellow Queen**—Large golden yellow, **Arkwright Ruby**—Ruby red.

All these collections are priced as follows—Postage additional. If you wish plants sent by mail, add 10% to your remittance.

6 plants of any one group - \$1.00
12 plants of any one group - 1.75
25 plants of any one group - 3.00



Polyanthus, Barnes Superb Mixture

Polyanthus, Barnes Superb Mixture (Bunch Primrose)—6-8". All the colors of a Persian Carpet. We are offering an especially fine lot of these desirable Primroses. The parent stock of our plants was a marvelous sight in full bloom—several thousands of them in mass plantings of such beauty as to be actually breath-taking. The color range embraces every color and color combination known to Polyanthus. These bright, free flowering plants do well in a partially shaded location which does not get real dry in the summer. You will be delighted with the marvelous color a bed of these will present in May and June. 25c; 3 for 60c.

Polyanthus, Twin Cups—A Barnes Brothers Introduction for 1937. Twin Cups, as the name implies, is a hose-in-hose, or duplex Polyanthus; that is, the flowers are borne in pairs with the second blossom growing out of, and over the first. The plants in bloom look exactly as though some one had come along with a handful of extra Polyanthus blooms and had placed another flower in the center of each one in the original cluster. Twin Cups is bright red in color and when in flower is entirely covered with a mass of showy blossoms—twice as showy as any ordinary Polyanthus, of course, because it has twice as many flowers. 50c; 3 for \$1.35.

Our General Price List offers a fine selection of Paeonias. Send for it if you are interested.

Rudbeckia purpurea (Echinacea), Cone Flower—We are offering a new and improved Cone Flower.

The King—5'. Differing from the common *Rudbeckia purpurea* in its enormous growth and very large bright pink flowers which average 4" in diameter. The King is a very early flowering variety, beginning to bloom about the middle of July. The large protruding cones of the flowers are brown. 50c; 3 for \$1.35.

Scabiosa caucasica (Pin Cushion Flower)—2'. Large feathery flowers blooming all summer. They are among the finest for our gardens and for cutting and will thrive in any soil provided it is well drained, for they rot when it is damp and heavy.

Isaac House Strain—An outstanding strain with extra large flowers in all shades of lavender, blue and white. Offered only in mixture. 25c; 3 for 60c.

Perfecta alba—A pure white flowered variety. 25c; 3 for 60c.

Goldingensis—Very fine deep blue variety having exceptionally well shaped, symmetrical blooms. 25c; 3 for 60c.

Sedum spurium coccineum, Bronze Carpet—A new red leaved German Introduction. Bronze Carpet is probably the finest of any red leaved variety of these easily grown perennials. We find it a rapidly growing ground cover, bronzy-red in the summer changing to a shining copper-red as the fall advances. Perfectly hardy. Deep pink flowers. 35c; 3 for 90c.

Veronica incana rosea—12-15". Most gardeners have long grown and admired the well known, silver leaved, blue flowered *Veronica incana*; it is a choice perennial. Now comes this importation from Holland, a silver leaved *Veronica incana* with deep pink flowers. To describe it fully: *Veronica incana rosea* is a low growing, white leaved, hardy perennial, which, during July and August, sends up quantities of foot long spikes of deep rose colored flowers, making a striking contrast with the silvery grey of its foliage. 50c; 3 for \$1.35.

Papaver nudicaule (Iceland Poppy)—For brilliant coloring use Iceland Poppies. Here and there in various corners of the world are nurseries and individuals busily working on new varieties of these showy biennials. Gartref, Sunbeam, Coonara, are just a few of the really wonderful strains which have come on to the market recently, but which are, as yet, comparatively unknown to most flower lovers. We are offering two strains of the very fine Coonara group.

Giant Coonara Mixed—A mixture of Iceland Poppies having huge flowers of exceedingly brilliant coloration. Every shade of these dainty, wiry stemmed poppies, be it yellow, orange, pink or red is bright, even the whites with their centers of golden yellow are showy. Try them. 25c; 3 for 60c.

Giant Coonara Pinks—A fine strain of large flowered Iceland Poppies in which various shades of pink predominate. 25c; 3 for 60c.

SHRUBS OF UNUSUAL BEAUTY & DISTINCTIVE CHARM

Bright Yellow Flowers in the Early Spring

Cornus mas (Cornelian Cherry)—In the very early spring when other shrubs are brown and dull, Cornelian Cherry breaks into a mass of cheerfully bright yellow flowers. Scarlet fruits follow in the autumn. An upright grower to 10-15', it makes a grand shrub to plant in city gardens for it is not harmed by a smoky atmosphere and does well in either sun or shade. 2-3', 75c; 3-4', \$1.00 each.



Cornus Mas

Daphne mezereum (February Daphne)—Is a bright spot of color to welcome the first warm days of spring. Here is a little shrub growing no higher than 4' whose branches are thickly set with reddish lilac, fragrant flowers. It likes partial shade and a well drained soil. Balled and Burlapped, 12-15", 75c each.

Ilex serrata (Finetooth Holly)—Red Holly berries for winter bouquets. A shrub of medium height much like *Ilex verticillata* (Black Alder) but smaller in every way and of more graceful habit. Berries are very abundant and shiny red. Best planted in groups to insure berrying. You will be delighted with them among evergreens. 18-24", \$1.00 each.

New Scotch Brooms (*Cytissus scoparius andreanus hybrids*)—Flowers are ruby red, flaming orange, golden yellow, snow white and unusual and beautiful combinations. The plants form a twiggy mass of green 5-6' high. They are very showy and so desirable that your garden must not lack a few of these lovely Brooms. 5" pot plants, 75c each.



Cytissus (Scotch Broom)



Buddleia, Ile de France

Gorgeous Colors

Azalea Mollis Hybrids (Chinese Azalea)—Brilliant Beauty for your garden. These hardy Azaleas burst into varying shades of pink, yellow, orange, salmon and flaming red in late May. The large, bright flowers in large clusters make the plant resemble dwarf Rhododendrons. They will grow about 6' high and need a sunny location. Balled and Burlapped, 12-15", \$1.50 each.

Hypericum forresti—For late summer bloom. Neat and densely massed shrubs 2-3' tall with dark green leaves which are held late in the fall. Single flowers, rich buttery yellow, with a mass of golden stamens at the center, bloom from July to Sept. These are not hardy north of Mass. Strong field grown plants, 50c each.

Regular Scotch Broom (*Cytissus scoparius*)—With bright yellow flowers. 4" pots, 50c each.

Kerria japonica flora plena (Double Kerria)—The beloved Japanese Rose of our Grandmothers' gardens. A slender shrub 6-8' high which sends up each spring numbers of shoots which keep their fresh bright green all the year. From June to September bright buttercup yellow double flowers are borne on these young shoots. Strong, field grown plants, 75c each.

Buddleia, Ile De France (The New Butterfly Bush)—12" spikes of claret purple. You will hardly recognize the old-fashioned Buddleia in this beautiful and improved form—long thick spikes of rich claret purple flowers are borne profusely from July until hard frosts end the display. For best results cut the old stems to the ground early each spring. Very fine, large, sure-to-bloom plants. Strong, 2 year plants, 50c each.



Kerria Japonica, flora plena

A Cloud of Purple Smoke

Rhus cotinus (Smoke Bush)—A large, picturesque shrub, which at maturity attains a height of 14 feet. In habit, it is round and bushy, often broader than high. The foliage is fine-textured, dense and dark green, and in autumn assumes various shades of yellow and purple. The plant also bears small, inconspicuous purple flowers in loosely arranged clusters. In July, the plant is enveloped in clouds of delicate, lavender, fluffy stems which look like swirls of smoke. 18-24", 50c; 2-3', 75c; 3-4', \$1.00 each.



Rhus cotinus



Stewartia

RARE AND BEAUTIFUL

Stewartia pseudocamellia—This rare and beautiful plant has been difficult to obtain and expensive, but we have succeeded in growing some fine young specimens and have priced them modestly. Stewartia makes a tall shrub. During summer large snowy white flowers with bright orange anthers at the center make a striking contrast with the handsome foliage. In autumn the leaves are brilliant with red and orange. It likes a woody location but is not hardy north of Mass. 12-18", 75c each.

A Short List of Some of the Most Desirable Shrubs

Callicarpa purpurea (Beauty Berry)—A small slender shrub with clusters of lavender berries in the fall. 18-24".

Cornus alba siberica (Red Branched Dogwood)—Bright coral red stems, blue and white berries, medium sized. 2-3'.

Cydonia japonica (Japan Quince)—Scarlet flowers in May. Dark glossy foliage. 12-18".

Deutzia, Pride of Rochester—Large double white flower, tinted pink outside. 8'. 2-3'.

Exochorda (Pearl Bush)—Large white flowers in early May. Slender upright shrub to 10'. 2-3'.

Forsythia spectabilis—Covered with golden flowers in the spring. Makes a handsome specimen. 2-3'.

Forsythia suspensa—Long drooping branches are splendid for covering banks or training over trellises. Bright yellow flowers in spring. 2-3'.

Hydrangea panicula grandiflora—Pyramids of white, pink tinged flowers. Mid-July to October. 2-3'.

Ilex verticillata (Black Alder)—Bright red berries all winter. Grows about 9' high. 12-18".

Kolkwitzia amabilis (Beauty Bush)—Branches arching with pink flowers in June. 18-24".

Lespedeza formosa (Bush Clover)—Rosy purple pea-like flowers in mid-summer.

Lonicera tatarica (Tartarian Honeysuckle)—Bushy and tall. Flowers in June followed by red berries. Red, pink or white flowers. 2-3'.

Philadelphus coronarius—A fine old shrub with very fragrant white flowers in May. 2-3'.

Spiraea Anthony Waterer—Small shrub with rose-pink flowers all summer. 12-18".

Spiraea thunbergi—Delicate, arching branches are covered with tiny white flowers in April and May. 2-3'.

Spiraea trichocarpa—Similar to S. Van Houttei but flowers are two weeks later. 2-3'.

Spiraea Van Houttei—The popular Bridal Wreath. Quantities of white flowers in May and June. 2-3'.

Stephanandra flexuosa—Fountain-like with lacy foliage and white flowers in June. 18-24".

Symphoricarpos racemosus (Snowberry)—A low shrub with pinkish white flowers in summer and round white berries in fall and winter. 2-3'.

Symphoricarpos vulgaris (Coralberry)—Likes shade. Small pink clustered berries. 2-3'.

Syringa vulgaris—The well known, old fashioned Purple Lilac. 18-24".

Tamarix africana—Tall and slender with feathery foliage and plumes of pink flowers in early summer. 18-24".

Viburnum opulus (Cranberry Bush)—Tall shrub with white flowers followed by red berries. 2-3'.

Viburnum opulus sterilis (Common Snowball)—Large snowball-like clusters of white flowers. 2-3'.

Weigela Eva Rathke—A small shrub with many dark red flowers during the summer. 18-24".

Weigela rosea—Makes a showy spectacle of deep pink flowers in June. 2-3'.

Your Choice: 35c each; 5 alike or assorted, \$1.47; 25 alike or assorted, \$6.25. Transportation Charges Additional.

Cotoneaster horizontalis (Rock Cotoneaster)—Dwarf and prostrate with dark, glossy leaves and red berries. Grand for rock gardens. 5" pots.

Euonymus yedoensis—Quantities of Bittersweet-like berries, scarlet with bright pink outer coats in the fall. 2-3'.

Hibiscus (Rose-of-Sharon)—Bright flowers in August. Double red, pink, purple or white.

Philadelphus Atlas—Tall with large single white flowers in June. 3-4'.

Philadelphus virginialis—Large, white, double and semi-double, fragrant flowers. 3-4'.

Viburnum tomentosum plicatum (Japanese Snowball)—Round heads of pure white flowers in June. A large, handsome shrub. 18-24".

Your Choice: 75c each; 5 alike or assorted, \$2.98; 25 alike or assorted \$12.50.

You will find long list of Hardy Shrubs in various sizes in our General Price List. Send for if you are interested

Two Tiny Roses

That are

**Ideal for the
Rock Garden**

and

**Borders of the
Garden**



Now in Bloom

Oakington Ruby

A New, Tiny, Bright Red Rosa Rouletti

Oakington Ruby is a dwarf rose, growing like the popular Rosa Rouletti, but its fully double flowers are deep crimson in bud and open a rich ruby-carmine. This color is maintained until the petals fall, even under strong sun and heat. The plant is hardy, not fussy about soil and blooms from May until late fall. 3" pot plants,

\$1 each; 3 for \$2⁵⁰

Rosa Rouletti

Rare Treasure for a Rock Garden

This miniature rose was found in a high Swiss village. None knew where it came from nor how it got there, but the villagers had grown it for many years in their window boxes. It was brought into France where it attracted instant attention and from there it was introduced to other countries. This elfin rose has perfect little pointed buds of bright pink which open into tiny, double roses. The flowering season extends from April to November and the plant is perfectly hardy. It grows very slowly and its charm, which lies in its small size, is never outgrown. These are truly dwarf plants that will fit into a tiny niche and stay in proportion, giving a profusion of flowers throughout the summer. 3" pot plants,

50c each; 3 for \$1³⁵

Gorgeous COLORS in NEW PETUNIAS



Ready to Bloom—Blossom All Summer—Large Bright Flowers

All Are Double—Fringed Petal Edges

Here are the Colors: Bright Red, Red Edged White, Deep Red, Pink, Lavender
Pink, White (Carnation type, fragrant. Petals are not frilled.)



25c each; 12 for \$1.95

Add 10% for Postage and Special Handling. (Minimum charge 10c)

ALWAYS USE SEPARATE SHEET FOR LETTERS

Quantity	NAME OF PLANTS	Size or Age	Total Price

Please give names and addresses of friends who are interested in plant materials:

BARNES BROTHERS FREE REWARD FOR ORDERING EARLY

So many folks wait until they are ready to plant before they send in their orders that we have to work almost day and night in order to get them out.
Now, if you will just sit down and make out your order before April 1st, and if it amounts to \$2.00 or more, we'll send you free of charge one of BARNES BROS. improved Butterfly Bushes. You will marvel at the vigorous profusion of large, glowing purple flowers packed into long thick spikes of summer bloom. MAIL YOUR ORDER TODAY!

OVER FORTY YEARS OF EXPERIENCE



OVER FORTY YEARS OF INTEGRITY



Viburnum Carlesii

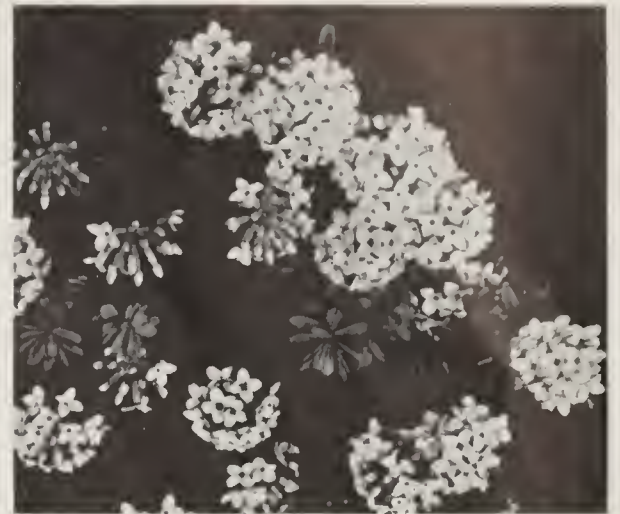
Two Fragrant May-Flowering Shrubs

For beauty and abundance of flowers, fragrance and color—these two shrubs are “tops.” Every garden has a place for them.

SPECIAL OFFER

One of each or two alike \$1.98
Three of each or six alike \$5.78

Note: On account of their weight, not more two can be sent by mail. Add 10% of the price to cover postage and special packing. Larger quantities will be sent by express, purchaser paying transportation charges



Daphne Cneorum

Viburnum carlesii (Fragrant Viburnum)—In May this little shrub bears clusters of clove-scented flowers, rose pink in bud, paling to white when open. Its fragrance makes it a delight in any garden. It grows into a broad, rounded shrub about 5' high. It is still rare. 18" plants, Balled and Burlapped, \$1.25 each.

Daphne cneorum (Rose Daphne)—The finest little evergreen to give color in a rock garden, in a border or among evergreens. In May and sparingly afterward, clusters of dainty pink flowers perfume the garden with spicy fragrance. Daphne grows 12-15" high but spread quite widely and like a sunny location. 9-12" plants, Balled and Burlapped. \$1.25 each.

Climbing Vines

Ampelopsis tricuspidata (Boston Ivy)—Ideal for use in towns or cities, for it is not fussy about soil, not troubled by insects or diseases, nor injured by smoke or dirt. Glossy dark green leaves, brilliant red in fall, make a perfect cover for brick or stones. 35c each; 3 for 89c.

Bignonia radicans (Trumpet Vine)—High climbing with large orange-scarlet flowers which bloom nearly all summer. Provide with rich soil. 35c each; 3 for 89c.

Clematis jackmani—The most popular of all the clematis hybrids. Its flowers are velvety purple and very large. It likes rich soil, needs lime, and should be protected in the winter. 4" pot plants, 85c each.



Wisteria

Hedera helix baltica (Hardy English Ivy)—This is a hardy variety of English Ivy and is the same in appearance. With its dark, glossy evergreen leaves, it is one of the best plants for climbing on masonry. 35c each; 3 for 89c.

Lonicera japonica halliana (Hall Japan Honeysuckle)—An old favorite with dark, semi-evergreen leaves and yellow and white flowers from July to fall. 35c each; 3 for 89c.

Wisteria sinensis (Wisteria)—This rapidly growing vine with light purple flowers in May prefers deep, rich, moist soil. These plants are grafted from those which have flowered to insure bloom for you within a short time. \$1.00 each.

Our general Price List offers many other vines.

• Hedge Plants •

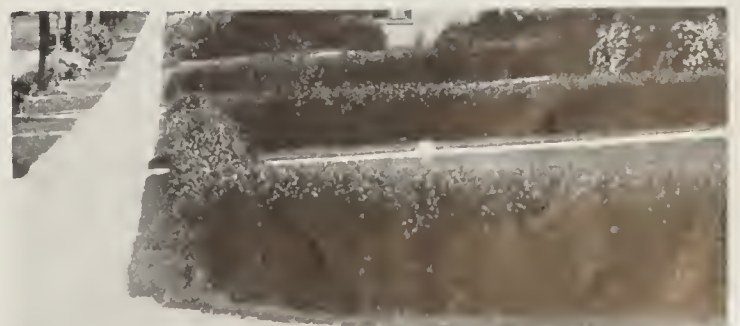
Japan Barberry (Berberis Thunbergi)—Beautiful, familiar, ever useful, and above all entirely hardy. Red-berried. Space 1-2' apart depending on the size of plants. Heavy 3 year well-branched plants with fine roots that will give immediate results. 12-18", \$1.50 per 10; \$10.00 per 100. 18-24", \$2.00 per 10; \$14.00 per 100.

Box Barberry—A very dwarf form with small leaves. Makes a wonderful edging for walks or plant beds. 9-12", \$1.80 per 10.

Red Barberry—A Japan Barberry with red leaves all the year. Be sure to plant in a sunny location. 12-15", \$2.00 per 10.

California Privet—Famous for its bright green foliage. Not reliably hardy north of Conn. under average weather conditions. 12-18", 50c per 10; \$3.00 per 100. 18-24", 60c per 10; \$4.00 per 100. 2-3', 80c per 10; \$6.00 per 100.

Ibodium Privet—An upright bushy privet that will stand cold winters. Widely used in Northern New England. Unexcelled for tall screens and formal hedges. 12-18", 60c per 10; \$4.00 per 100. 18-24", 80c per 10; \$6.00 per 100. 2-3', \$1.00 per 10; \$8.00 per 100.



California Privet

Barnes' Choice Roses

SELECTED NEW ROSES OF MERIT

HYBRID TEA

Carrie Jacobs Bond (Plant Patent 158)—Rich, deep rose overlaid with a luminous coral sheen. Large, double, perfectly formed flowers. Its vigorous growth and unusually beautiful flowers foretell great popularity for it among garden roses. **\$1.25 each.**

Crimson Glory (Plant Patent 105)—Large urn-shaped buds open into vivid crimson flowers with deep red shading and a velvety texture. The plant branches freely, yet remains compact and well shaped. It was awarded a Silver Medal at the International Flower Show in New York in 1934. **\$1.25 each.**

Glowing Carmine—A strong grower with shapely buds and a glowing carmine color that does not fade quickly. **\$1.00 each.**

Glowing Sunset (Plant Patent 104)—This glorious new rose gives a most unusual color combination and petal formation. The long, pointed buds open to full, double flowers of a most artistic form with the inner petals lengthened and twisted in the bizarre manner of a choice Cactus Dahlia. The color is an indescribable blend of orange-yellow and rose-pink presenting a unique and pleasing effect. Alluringly fragrant and a free and continuous bloomer. **\$1.25 each.**

Mme. Joseph Perraud—Long pointed buds open to fragrant flowers of nasturtium huff lightening to shell pink at the petal margins. A prize winning French rose that is outstanding among the recent introductions. **\$1.50 each.**

Mrs. Sam McGredy—A beautiful fiery scarlet-orange with copper blend and red flush on the outside of the petals. Large fragrant flowers freely produced on vigorous bushy plants make this popular variety one of the best all-purpose garden roses. **85c each.**

Pink Dawn—Deep rose flowers with an orange tint at the base of the petals, full, fragrant and perfectly formed, a vigorous upright grower which produces an abundance of flowers. **\$1.25 each.**

CLIMBING

Apricot Glow (Plant Patent applied for)—Medium sized flowers produced in large trusses. Light apricot paling to yellow at the base. Flowers are double, well formed and fragrant. **\$1.50 each.**

Golden Glow (Plant Patent applied for)—Pure cadmium yellow, fragrant flowers of Hybrid Tea form and 3½-5" in size. Its vigorous, dark green foliage has been found highly resistant to black spot and mildew. It is a prolific bloomer. **\$1.50 each.**

HYBRID TEA ROSES

Betty Uprichard—Petals salmon pink backed with carmine.

Dame Edith Helen—Soft pure pink flowers of great size.

Edith Nellie Perkins—Salmon pink inside; deep coppery rose outside.

E. G. Hill—Brilliant unfading red; very large and double.

Etoile de Hollande—A fine deep red, the most popular red garden rose.

Golden Dawn—Lemon yellow, rounded buds, large and fragrant.

Heinrich Wendland—Unfading nasturtium red petals backed with golden yellow.

Joanna Hill—Deep cream, tinged with salmon and yellow.

K. A. Victoria—Favorite old, white rose.

McGredy's Scarlet—Blazing scarlet with a touch of orange-yellow at the base.

Margaret McGredy—Double, cup shaped flowers, open a brilliant oriental red and turn in aging to a remarkable, rich brick-red.

Mme. Butterfly—Very fragrant, bright pink.

Mme. Jules Bouche—Best garden white.

Mrs. E. P. Thom—A fine unfading yellow rose.

Mrs. Pierre S. DuPont—Bright golden yellow, fragrant and a continuous bloomer.

Ophelia—Creamy white with pale pink stains.

Pres. Herbert Hoover—Scarlet and yellow in bud; when open creamy yellow, marked with red.

Radiance—Rose pink, rounded flowers.

Red Radiance—Like Radiance, only red.

Talisman—Copper red and gold flowers.

Ville de Paris—Pure buttercup yellow rounded flowers.



Crimson Glory

PRICES OF HYBRID TEA ROSES

75c each; \$8.00 per dozen, alike or assorted. Not Postpaid. If you wish plants sent by mail, add 5% to remittance to cover postage and special packing. Minimum charge 10c.

CLIMBING ROSES

American Pillar—Single pink flowers, petals white at the center.

Climbing American Beauty—Deep rose pink.

Dr. Van Fleet—Large pale pink flowers. A vigorous and beautiful climber.

Jacotte—Apricot-yellow. Semi-double. One of the best yellow climbers.

Mary Lovett—Pure waxy white flowers, large and fragrant.

Mary Wallace—Bright pink, large.

Mme. Gregoire Staechelin—Huge, pearl pink flowers.

Paul's Scarlet—Large double and intensely red flowers lasting for a long season.

Primrose—Double yellow flowers and handsome shiny foliage.

Prices: 50c each, \$5.00 per dozen. Not Postpaid. If you wish plants sent by mail, add 5% to remittance to cover postage and special packing. Minimum charge 10c.



Paul's Scarlet Climber

Roses are Easy to Grow and Last for Years

Shade Trees

FOR STREET AND LAWN PLANTING

Trees! What would our country be without them? While the magnificent specimens we now enjoy were planted many years ago, Barnes Bros. thrifty young trees will give generous shade within a few years. Think how little care a tree requires—how much it returns in shade, shelter and beauty, not only throughout your own life but for generations beyond. Look about your home now. Have you made full use of the possibilities of a stately Sugar Maple, a graceful, drooping, Weeping Willow, or a rare, bright yellow flowering Golden Rain Tree? Here are a few choice varieties which we have selected for you. Choose with assurance that you'll receive expertly grown, well-rooted and trained specimens. They all must be planted in early spring or late fall. But *let's not forget to plant trees!*



Norway Maple

Norway Maple (*Acer platanoides*)—40-60'. Rapidly growing, symmetrical in form with a compact, rounded head. The dark green leaves give dense shade and turn a brilliant yellow in the fall. It is one of the most popular trees for shade and street planting. 6-8', \$1.50; 3 for \$3.75; 8-10', \$2.00; 3 for \$5.40.

Sugar Maple (*Acer saccharum*)—80-100'. A stately native tree, oval in form and very dense. Its dark green leaves become a mass of vivid reds and yellows in the fall. One of the finest street and shade trees. 10-12', \$3.25; 3 for \$8.75.

Pin Oak (*Quercus palustris*)—80'. This very handsome tree is particularly adapted to lawn and street planting because of its symmetrical pyramidal habit, its rapid growth and fine foliage which turns bright red in the fall. Moist soil is desirable but not essential. 6-8', \$2.00; 3 for \$5.40. 8-10', \$3.50; 3 for \$9.45.

Flowering Dogwood (*Cornus florida*)—Handsome all the year around is this hardy native tree, growing 20-25' high and sometimes shrubby. In spring before leaves appear, large flowers transform it into a cloud of white. In summer its splendid foliage is dense enough to give generous shade. In the fall there are bright scarlet berries, and leaves turn red to match. Dogwoods will give much pleasure and will add much beauty to your lawn. 4-5', \$1.50 each.



White Flowering Dogwood

Cutleaf Weeping White Birch (*Betula alba laciniata pendula*)—40'. This white barked, graceful tree is one of the most beautiful that can be planted on a lawn. Leaves are light green and finely cut. The branches are slender and pendulous. 9-10', \$3.00 each.

Plane Tree (*Platanus orientalis*)—80'. Considered by many the most successful shade tree for street plantings, as it is suited to a variety of soils, grows rapidly, withstands the smoky atmosphere of cities, and is remarkably free from insect pests. Symmetrical, graceful in contour. 6-8', \$1.50; 3 for \$3.75.

ALL TREES WILL BE SHIPPED
BY EXPRESS OR FREIGHT



Weeping Willow

Weeping Willow (*Salix babylonica*)—40'. Long, pendulous branches droop to the ground with matchless grace. They create exquisite effects beside water but will thrive equally well in drier locations. You have always wanted to have one of these beautiful trees in your garden. Now don't miss this opportunity to purchase some of these strong, thrifty young trees—they were grown especially for you. 5-6' high, \$1.00 each; 3 for \$2.70; 6-8' high, \$1.50 each, 3 for \$3.75.

Common Linden (*Tilia vulgaris*)—Tall and rapidly growing to about 100'. It has a regular, pyramidal habit, large dark green leaves and small, fragrant, yellow flowers. It is not fussy about soil and is one of the best street and shade trees. 6-8', \$2.00; 3 for \$5.40.

Golden Rain Tree (*Koelreuteria paniculata*)—This lovely small tree, a native of China and Japan, well deserves its name for during the summer its clusters of small yellow flowers shower the tree like raindrops of gold. It grows about 30' tall, its leaves are light green and finely divided. It is not particular about soil; likes a sunny location; is hardy through Mass.; and doesn't mind hot dry weather. This is one of the most beautiful and unusual lawn trees. Don't miss this opportunity to add one to yours. 5-6', \$2.25 each.



Koelreuteria

Shade Trees Add to Comfort and Increase in Value

Apples • The King of Fruits

(Apple trees in our growing fields are inspected annually, for trueness to name, by Dr. J. K. Shaw of Massachusetts Fruit Growers' Association. While our stocks are ample this year, the demand is strong and our supply is not inexhaustible. Please Order Early.)



Apple Tree Prices

$\frac{11}{16}$ " cal. and up, 5-7' Each	10	100
high	\$.75	\$5.50 \$40.00
$\frac{9}{16}$ - $\frac{11}{16}$ " , 4-6'	.65	5.50 30.00
$\frac{7}{16}$ - $\frac{9}{16}$ " , 4-5'	.50	4.00 25.00

WINTER

- SUMMER**
- Astrachan, Red—Crimson. Most popular all round summer apple.
 - Gravenstein, Red—Solid red. Subacid. Excellent for cooking and eating.
 - McIntosh, Early—McIntosh-like in color, flavor and texture.
 - Yellow Transparent—Pale yellow, juicy and subacid. Trees bear young.

- Baldwin—Red blushed. The standard winter apple.
- Cortland—Large, dark red. Like McIntosh in flavor and quality. A good keeper.
- Delicious—Nearly covered with brilliant dark red. An apple of highest quality and attractiveness.
- King—A very large and showy red apple with a November to January season.
- Northern Spy—Striped red. A rapid grower and good bearer.
- Red Sauce—New, large, red apple. Subacid, fine for cooking.
- Red Spy—Red form of the popular Northern Spy.
- R. I. Greening—Yellowish green. Unexcelled cooking apple.
- Rome Beauty—A handsome apple, yellow mottled red. Fine in quality and early to bear.
- Roxbury Russet—An old favorite which keeps throughout the winter.
- Winter Banana—Golden-yellow, red blushed. Early bearer.

AUTUMN

- Fall Pippin—A large, yellow apple of splendid quality.
- Kendall—McIntosh type and flavor, but a better keeper. Recent introduction of the New York Fruit Testing Assn. 2-yr. trees, 75c each.
- Macoun—Of the new apples, Macoun is unusually popular. It is like McIntosh in color, flavor and quality but ripens a little later.
- McIntosh, Red—Dark red. White, juicy flesh. A true favorite.
- Wealthy—Red. Large. Bears young. A good pollinizer for McIntosh.

CRABAPPLES

Hyslop—Yellow, red cheeked. Ripens in October.
 Transcendent—Dark red. Ripens in September.

Big Values in Little Apple Trees

Here's a grand opportunity to plant a new orchard or enlarge your present one with some young, thrifty trees, $\frac{3}{4}$ ' high, $\frac{7}{16}$ " caliper. We offer them to you in the following varieties: Baldwin, Delicious Red, Macoun, McIntosh, and R. I. Greening. All priced at \$25.00 per 100. Be sure to order early.

Stop Here



McIntosh

Barnes' Delicious PEARS

Here is a list of pears that will supply excellent fruit for market and home use from August well into the winter. Pears will grow on almost any good soil but thrive best in rather heavy loam or clay. Plant about 20' apart.

- Bartlett—Most popular pear for home and market use. Fine quality and rich flavor. Sept.
- Beurre Bose—Very large, deep yellow, overspread with russet. Unsurpassed in quality and flavor. Juicy. October and November.
- Beurre d'Anjou—An excellent market pear for late fall and early winter. Fruit yellow with faint blush. Uniform in size. Quality good.
- Clapp's Favorite—Large, red blushed. Quality good. Early. Precedes Bartlett.
- Duchess d'Angouleme—Extremely large pears of rich buttery flavor. October.
- Keiffer—Large, yellow with red cheek. Excellent for cooking and canning. Tree bears young and is productive. October and November.
- Lawrence—A light yellow, sweet pear which ripens in November and December.
- Seckel—Round, small russet colored pears. Fruit sweet and of finest quality. Tree productive and hardy. October.
- Sheldon—Large, round, russet and red pears of first quality. September and October.

Pear Tree Prices

	Each	10	100
$\frac{11}{16}$ " cal. and up, 5-7'	\$.75	\$6.50	\$50.00
$\frac{9}{16}$ - $\frac{11}{16}$ " cal., 4-6	.65	5.50	40.00



Bartlett Pears

Plant Fruit This Year for Pleasure and Profit



Elberta Peach

Barnes' Selected Peaches

GROW YOUR OWN [RIPENING PERIODS MENTIONED ARE FOR AVERAGE CONDITIONS IN CONNECTICUT]

PEACH TREE PRICES

	Each	10	100
$\frac{9}{16}$ " cal., 4-6'	\$.40	\$3.00	\$20.00
$\frac{7}{16}$ " cal., 3-4'30	2.00	16.00
$\frac{5}{16}$ " cal., 3-4'20	1.60	12.00
2-3'		1.20	10.00

- Belle of Georgia**—White with red cheek. Freestone. Late August.
- Carman**—White, red cheek. Semi-freestone. Mid-August.
- Champion**—Creamy white with red cheek. Large with fine flavor. Freestone. Mid-August.
- Cumberland**—A large red cheeked white. Good quality. Nearly freestone. Mid-August. Recommended to replace Carman.
- Elberta**—Large, yellow with red cheek. Freestone. Early September. Standard commercial peach.
- Golden Jubilee**—Large golden yellow, red blushed. Freestone. Mid-August. Best early yellow. This is an outstanding new peach which is now extremely popular.
- Greensboro**—A hardy early white. High color. Very juicy and of good quality.
- J. H. Hale**—Very large, yellow flesh, red cheek, freestone. Early September. Excellent in quality and flavor.
- Lizzie**—Large, lemon yellow with nice red cheek. Freestone. Late September. Good shipper. Has little fuzz.
- South Haven**—An early yellow freestone which ripens about the middle of August following Golden Jubilee. An excellent bearer, fine flavored and hardy.

Luscious Plums

With a minimum of care, plum trees grow rapidly and bear their large tasty fruits heavily. They do not make large trees and are desirable to plant in a garden of small proportions.

- Abundance**—Red, yellow fleshed, of good quality. Fine for canning. August. Hardy and productive.
- Burbank**—Yellow, red blushed. August. Good keeper and shipper.
- German Prune**—Large, oval purple, sweet and firm. Ripens in Sept.
- Red June**—Vermillion red, yellow fleshed. Late July. Productive.
- Shropshire Damson**—Purple. Fine for canning. Fruit medium sized and produced abundantly.

PLUM TREE PRICES

	Each	10
2 yr. $\frac{11}{16}$ " and up, 5-7'	\$.75	\$6.50



Burbank Plum



Black Tartarian

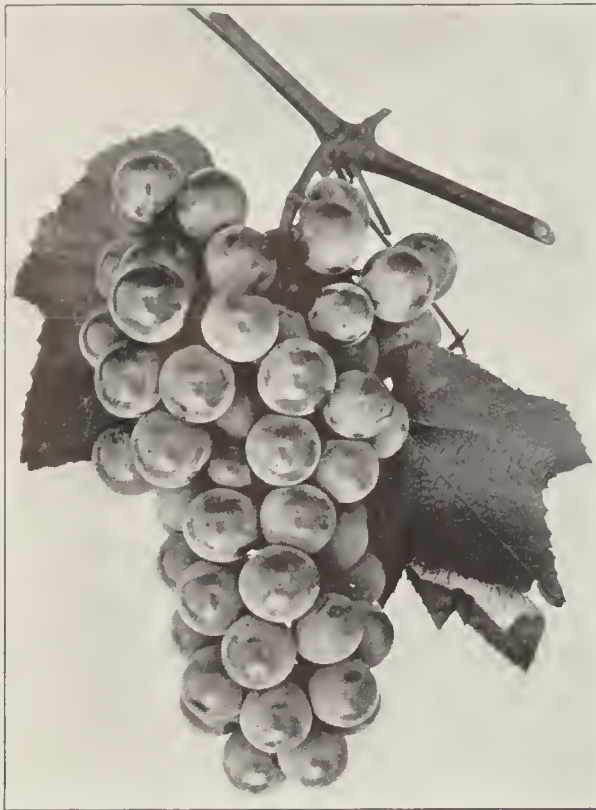
Barnes' Hardy Cherries

- Black Tartarian**—A large purple-black, red fleshed cherry of excellent flavor. The most popular dark sweet cherry.
- English Morello**—Medium sized. Dark red. A very productive late sour cherry.
- Governor Wood**—Large, light yellow with red cheek. Sweet. Early. One of the best.
- Montmorency**—Light red. Midseason. Bears young. Largest, most productive and popular sour cherry.
- Napoleon**—A large yellow, red cheeked, sweet cherry which follows Governor Wood.
- Schmidt**—Dark. Sweet. Fine flavor and very large. Late.
- Windsor**—A large, dark, sweet cherry of fine quality, ripening in July. Very hardy and productive.

CHERRY TREE PRICES

	Each	10
2 yr. $\frac{11}{16}$ " and up, 5-7'	\$1.00	\$9.00

We Offer Only Varieties Tested and Approved



Golden Muscat

GRAPES

THRIFTY 2 YEAR VINES

- Caco**—Wine red. Sweet. Delicious flavor. Berries large, bunches compact. Slightly earlier than Concord. A Catawba-Concord cross with the good qualities of both. **Each 35c; 10, \$3.00.**
- Concord**—Blue-black. Well known, practical and most widely planted variety. **Each, 20c; 10, \$1.50; 100, \$10.00.**
- Dunkirk**—A sweet red grape quite similar to the old Delaware, but both bunches and berries are larger and ripen a little later. **Each, 35c.**
- Fredonia**—The earliest good black grape. Ripens two weeks before Worden. Excellent quality. **Each, 35c.**
- Golden Muscat**—Very large, sweet and late with a fine muscat flavor. A grape for an epicure. **Each, 1.00.**
- Niagara**—White. Sweet. Large, compact bunches. Mid-season. **Each, 25c; 10, \$2.00.**
- Ontario**—One of the best early white grapes of superior quality. **Each, 35c.**
- Worden**—Blue-black. Quality excellent. Ripens about a week before Concord. A fine table grape. **Each, 25c; 10, \$2.00.**

HOME GARDEN OFFER

Good Until May 1st.

100 Dorset or Fairfax Strawberries.....	\$1.00
25 Mary Washington Asparagus.....	.50
20 Latham Raspberries.....	.80
10 Blackberries.....	.40
1 Niagara Grape.....	.25
1 Concord Grape.....	.20

Total Value \$3.15

\$2.55 OUR SPECIAL OFFER 2.55

YOU SAVE \$.60

If offer is to be sent by parcel post, add 5% for postage.

Strawberries for All

Catskill—Midseason. A new variety which is the most valuable midseason berry we have ever grown. The fruit is a bright red and of excellent quality. In production, Catskill ranks at the very top.

Chesapeake—Late. The aristocrat of strawberries. The fruit does not come into bearing until all the early varieties are practically through. It is a large, high quality berry for the home garden.

Dorsett and Fairfax—Early to midseason. Strong growers and heavy producers. Berries are large, firm, bright red, most attractive and they have an unusually delicious flavor. Fairfax is slightly darker. Dorsett, with high yield and excellent shipping qualities, is recommended for market use.

Howard 17 (Premier)—Ripens early and continues a long time. Berries large, bright red and firm. A thrifty grower, reliable and hardy. Well known and widely planted.

Mastodon—Large, bright red berries of good quality and delicious flavor, produced abundantly in June and again in the fall. This is a fine everbearing.

Catskill and Mastodon: 100 for \$2.00; 1,000 for \$12.00. Chesapeake, Dorsett, Fairfax, Howard 17, 100 for \$1.00; 1,000 for \$8.00.



Howard 17



Concord

QUINCE

Orange—Bright golden yellow, very large, rounded fruits of fine quality and flavor. An excellent variety for cooking.

2 year 5/8" cal.

\$1.00 each

\$9.00 per 10

Fruit Trees are Scarce. Order Today.

Raspberries

Columbian—Dark purple red. Berries very large and yield tremendous. Midseason. 10 for 60c; 100 for \$5.00; 1,000 for \$40.00.

Cumberland—A fine black raspberry of high quality and flavor. Plants are hardy, disease resistant and very productive. A fine and dependable black raspberry.

Latham—Vigorous, hardy and reliable with an abundant yield. The berries are bright red, large and firm. A most profitable variety.

Newburgh—A promising and popular new red raspberry. Large red berries of excellent quality which keep long and ship well. Plants are disease resistant, hardy and heavy bearers.

Plum Farmer—The most popular black raspberry. Berries large, firm, and early. Plants vigorous.

St. Regis—Red everbearing. Plants yield at usual time, but beginning in September a secondary crop is produced. Quality good. Size medium.

Prices except where noted otherwise: 10 for 40c; 100 for \$3.50; 1,000 for \$25.00.



Latham

**BLACKBERRIES
SURE TASTE GOOD**

Every Home Should Have Its Own Raspberries

—because raspberries yield quickly and abundantly and the fruit is so delicious both for immediate use and for preserving. Grow them on any well drained soil; they take little space. After fruiting, cut out all the old canes (they will not bear again) and in the spring cut back the new canes to about 3'.

Is your patch old and overgrown? The size of the berries and the crop will be increased by setting new plants.



Eldorado

Eldorado—Vigorous, hardy and prolific. Berries are large, jet black and borne in large clusters which ripen well together. Flavor is good. No hard core. Quality unsurpassed for home or market use. Midseason.

Snyder—One of the hardiest blackberries. Berries medium sized and abundant.

PRICES

10 for 40c; 100 for \$3.50;
1,000 for \$25.00

Asparagus

Asparagus will grow in any garden soil but to produce the largest, most tender stalks the soil must be rich and well fertilized. Set plants so that crowns are about 3" below the surface. Plant about 18" apart in rows 3' apart.

Mary Washington Asparagus—Is one of the finest varieties you can plant. Shoots are large, of good color and prolific. It starts growing early and continues over a long season. Rust resistant. 2 year roots: 25 for 50c; 100 for \$1.50; 1,000 for \$10.00.

Rhubarb

Myatt's Victoria—An improved Myatt's Linnaeus. Stalks are highly colored, early, unusually tender, and pleasantly tart. You will hardly recognize the old-fashioned "Pie Plant" in this delightfully improved form. Each 20c; 10 for \$1.50.



Mary Washington



Myatt's Victoria

Write for Prices on Items Not Listed in this Booklet.

ANOKA

Truly the Wonder Apple

It is truly a wonder apple because it forms fruit buds on one year old wood so that a one year old tree will bear fruit the second year after planting, and keep it up every year.

Anoka is a round, red-striped apple of attractive appearance and of good quality. The fruit ripens early, and it is really a very good, early summer eating apple, with very juicy, pleasant, sub-acid flesh of peculiar characteristic flavor that pleases everybody.

PRICES

Strong
two year trees
\$1.00 each



LIBRARY
RECEIVED
☆ MAR 19 1937
U. S. Department of Agriculture

Outstanding Features of Anoka

Bears Fruit Year Following Planting

Very Hardy

Tree is Moderate in size

Easy to Spray

Easy to Harvest Fruit

*Beautiful in Flower
and Fruit*

Ideal for Home Garden

**BARNES BROS.
NURSERY
CO.**

YALESVILLE, CONN.

