

Whitney South Sea Expedition -
Mammals (Coultas) - 1930-1935

WILLIAM F. COULTAS.

Whitney South Sea Expedition

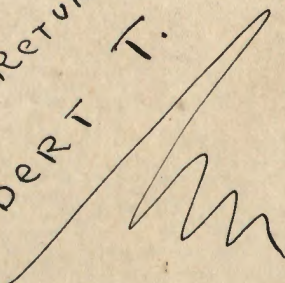
Bats. down on belly.

L. Total . mm.

tail length
length hind foot. . .

tip skull to leg..

Ear some times:

TO RETURN TO.
ROBERT T. HATT.


Mammal

Catalogue

Condition sexual glands.
mammary glands

Food.

Habits

arrangement + number of pads on
foot.

nose + ears of bats.

W. W. Wood

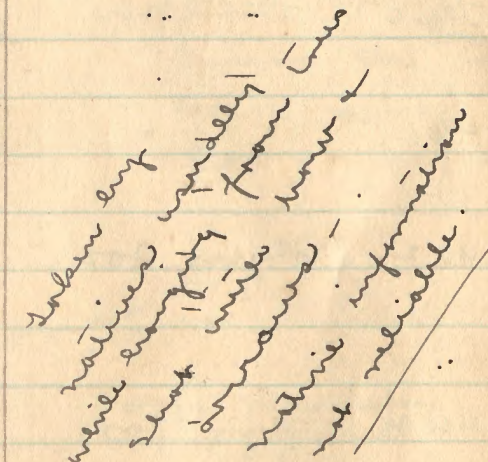
Calcutta

- 38808 Flying Fox - San Cristóbal Island Solomonis
 altitude 2000 feet. - shot by native
 common fruit eater - seen flying at night.
 weight. 300 grams. (sex? shot) center of mountain area.
 December 18th. 1929.
- 38937 O' Possum. (Juv) Auki Malaita Island (Sol's)
 Auki (sea coast) Purchased from
 native. Reported very common. JANUARY. 27th 30
- 39135 Flying Fox. - Se'u Malaita. (sea coast.)
 Iris brown: shot by native - not common
 weight. 500 grams. Feb. 6th 1930.

number	name	sex	locality
39452	O' Possum	♂	alt. 1500 ft. Interior Malaita British Solomons.
39453	Flying fox	♀	" " do " "
39726	O' Possum	♂	alt 3000 ft. mountains Malaita Solomons
39760	Flying fox	♂	" do " 3000 ft
39799	" "	♀	" do " 3000 ft.
39873	" "	♀	" " " 3000 ft
39921	" "	♀	" " " 3000 ft.
39930	" "	♀	" " " "
39931	" "	♀	" " " "
39960	" "	♂	" " " "
39963	" "	♀	" " " "
39964	" "	♀	" " " "
39965	" "	♀	" " " "
39966	O' Possum	♂	" " " "
39978	" "	♂	" " " "
39995	Bat.	♀	sea coast Malaita Solomons
40006	Flying fox	♂	mountains " " 3000 ft.
40007	" "	♂	" " " "
40008	O' Possum	♂	" " " "
40114	Flying fox	♀	Rennell Island Solomons
40159	" "	♂	" " " "
40225	" "	♀	" " " "
40385	" "	♂	Gower Island " "
40386	" "	♀	" " " "
40387	" "	♀	" " " "

1930.

date	measurements	weight grams	Remarks.
March 9 th 1930	no metric rule.	-	taken by native.
" "	no measurements	-	" " "
Mar. 28 th 1930	T.L. = 68.7 cm T. 26.4 cm H.F. 5.1 cm	1800	" " "
Mar. 31, 1930	no measurements.	287	" do "
Apr. 3, 1930	WSP: 71 cm EAR: 14 cm T.L. 19.8 cm H.F. 3.5	290	IRIS DARK BROWN.
Apr. 6, 1930	no measurements	220	iris dark brown. feeds on fruit + flowers of trees.
Apr 10, 1930	WING. 97 cm L: 19.5 cm H.F: 4.3 cm EAR: 1.7 cm	330	" "
Apr 11, 1930	WSP 94.3 L. 21.2 H.F. 4.3 EAR. 2.2	300	" "
" "	No measurements.	260	" "
Apr 13, 1930	WING SP: 95.6 cm L: 21.4 cm H.F: 4.4 cm EAR: 2.3 cm	400	" "
" "	WSP 94.3 T.L.: 18 cm H.F. 4.3 EAR: 1.5 cm	260	" "
" "	W.SP. 73 cm EAR. 1.3? T.L. 24 cm H.F. 4.4	315	" "
" "	WSP. 89 cm EAR: 1.3 T.L. 17.2 cm H.F. 4.3	250	" "
" "	T.L.: 68.5 cm EAR: 2.3 cm Body: 31 cm H.F. 5.4 cm.	2010	" "
Apr. 14, 1930	T.L.: 66.7 cm EAR: 2.3 cm. body: 29.9 cm H. Foot. 5.2 cm	1490	" "
Apr. 8, 1930	- no measurements.	-	Flying at evening.
Apr. 15, 1930	No measurements.	-	" "
" "	W.SP. 98.5 cm H.F. 5.1 cm T.L. 22.9 cm. EAR 2.1 cm	-	" "
" "	no measurements.	-	" "
May 17.	IRIS - CHESTNUT BROWN WSP: 760 mm T.L. 160 mm H.F. 44 mm EAR: 25 mm	190.	Taken by native. IRIS. DARK BROWN.
" 23.	WSP: 1440 mm TL: 257 mm H.F: 61 mm EAR: 27 mm	650	taken by native.
" 31	WSP: 870 mm TL. 194 mm H.F. 51 mm EAR 27 mm L: 189 mm H.F. 43 mm	?	Taken by native. IRIS: BROWN - reported to live in holes in trees. young.
Sept 20 th	EAR: 21 mm.	-	Reported different from 40385 lives under logs + stores. ????
" "	WSP - 792 mm L: 191 mm	-	similar to 40386.
" "	H.F. 46 mm EAR: 21 mm WSP: 777 mm L: 164 H.F. 39 EAR: 20 mm.	-	" "



Number	Name	Sex	Locality
40394	flying fox	♂ L	Lower Island Solomon's
40399	flying fox	♀ L.	Lower Island Solomon's
40400	flying fox	♀ JUV.	Lower Island Solomon's
40460	flying fox	♂ L.	Ontong Java Solomon's Sept. 30 1930
40461	" "	♂	Ontong Java Solomon's Sept. 30 1930
40462	flying fox	♂	Ontong Java Solomon's Sept. 30 1930
40463	flying fox.	♀	Ontong Java Solomon's SEPT 30 - 1930
40464	flying fox.	♀	Ontong Java Solomon's Sept. 30 1930
40465	flying fox	♀	Ontong Java Solomon's Sept. 30 1930
40466	FLYING FOX	LARGE ♂	Ontong Java Solomon's Sept. 30 1930
40467	FLYING FOX	♀	Ontong Java Solomon's SEPT. 30-1930
40468	FLYING FOX	♂ JUV	Ontong Java Solomon's Sept. 30 1930
XXX	SMALL BATS		3 in alcohol Sept. 21 st Lower Island 1930. Solomon's

Date	Measurements	Remarks
Sept. 20 th 1930	W.S.P. 788 mm L: 187 mm H.F. 45 mm EAR. 21 mm.	Supposedly one of 2 species ??? Very common.
SEPT. 20 th 1930	WSP: 826 mm L: 180 mm H.F. 42 mm; EAR: 21 mm	Carrying no. 40400 under wing attached to mammary gland.
SEPT. 20 th 1930	WSP: 373 mm L: 98 mm H.F.: 31 mm; EAR: 14 mm	Suckling young being transported by # 40399
-	TL: 200 mm EAR 22 mm H.F.: 46 mm	These foxes fly during the day time and not at night.
-	WSP - 871 mm TL: 206 mm: H.F. 46 mm EAR: 21 mm:	Common Large mammary glands. Skulls of these specimens taken by native dog: no time to procure more specimens. Sept. 20th 1930 " " " " " "
-	WSP: 821 mm TL: 194 mm: H.F: 43 mm EAR: 21 mm:	
-	WSP: 823 mm TL: 197 mm H.F: 47 mm EAR: 22 mm	
-	TL: 202 mm EAR: 23 mm: H.F: 46 mm	
-	TL: 200 mm EAR: 23 mm: H.F: 43 mm	
-	WSP: 884 mm TL: 194 mm EAR: 22 mm: H.F: 46 mm	
-	TL: 196 mm H.F: 47 mm EAR: 22 mm:	
-	TL: 114 mm H.F: 39 mm EAR: 16 mm	Procured by native mother not taken with juvenile specimen.

number	name	sex	Locality
40572	flying fox	♀ L	Ponape Carolines Nov. 5. 1930
40592	" "	♂ L	Ponape Carolines Nov. 6 1930
x x x	9 small		Ponape Carolines Nov. 9. 1930
x x	Bats in alcohol		
40652	FLYING FOX	♂ L.	Ponape Carolines Nov. 12-1930
40653	FLYING FOX	♀.	Ponape Carolines Nov. 12 1930
40654	FLYING FOX	♂ S.	Ponape Carolines Nov. 12 1930
40655	FLYING FOX	♀	Ponape Carolines Nov. 12 1930
40656.	FLYING FOX	♀	Ponape Carolines Nov. 12-1930
40657	FLYING FOX	♀	Ponape Carolines Nov. 12-1930
40658	FLYING FOX	♀	Ponape Carolines Nov. 12-1930
40659	FLYING FOX	♀	Ponape Carolines Nov. 12-1930
40676	FLYING FOX	♂ L	Ponape Carolines Nov. 13 1930
40677	" "	♂ L	Ponape Carolines Nov. 13 1930
40678	flying fox	♂	Ponape Carolines Nov. 1930

Date	Measurements mm.	Remarks.
Nov 5. 30	WSP: 664 H.F. 41 TL: 148. EAR 17 mm.	IRIS: CHESTNUT BROWN. Well developed EMBRYO INSIDE IN ALCOHOL.
-	WSP: 691 mm T.L: 146 mm. HF: 41 mm EAR: 18 mm.	IRIS: Chestnut Brown.
	Found in a cave side.	on mountain
Nov 12' 30	WSP: 624 - TL - 143 HF: 33 EAR: 17 mm	IRIS: CHESTNUT BROWN.
Nov. 12' 30	WSP: 644 - TL: 149 mm. HF: 36 mm : EAR: 17.5	Day-fliers ^{d. feeders.} never above 100 ft. altitude - coconuts Pau Pau's etc.
Nov. 12' 30	WSP: 624 TL: 139 mm H.F: 38 mm EAR: 17.	
"	WSP: 649 - TL: 125 mm HF: 38 mm ear: 17.5 mm.	
	WSP: 613 TL: 126 mm HF: 39. EAR: 17 mm.	
	WSP: 673 : TL: 154 mm HF: 38 mm : EAR: 19.5 mm	
	WSP: 668 - TL: 141 mm HF: 38 mm ear: 17.5	Majority of these taken on small mangrove island.
	WSP: 669 mm TL: 150 mm HF: 36 mm EAR: 18 mm	
	WSP: 623 - TL 156 mm HF: 39 - EAR: 19 "	
	WSP: 628 - TL: 148 mm HF: 39: EAR: 17.	
	WSP: 653 - TL: 146 mm. HF: 37 - EAR: 17	

number	name	Sex	Locality
40679	Flying Fox	♂ h.	Ponape Carolines Nov. 12 1930
40680	Flying Fox	♀	Ponape Carolines Nov. 12 1930
41380	Flying Fox	♂ juv.	Kusaie Carolines Mar 6. 1931.
41529.	Bush Rat.	♂	Kusaie Carolines.
41636.	Bush Rat.	♂	" "
41652.	Bush Rat.	♀ LARGE + MAMMARY GL.	" "
41653.	FLYING FOX.	♀	" "
41654.	FLYING FOX	♂.	" "
41586.	FLYING FOX	♂ LARGE.	" "
xx	FLYING FOX.		

♂s average much smaller than the ♀s
fairly common at north end of Island

Date	Measurements	Remarks.
	WSP: 683 - TL: 159. HF: 37.5 - EAR: 17.5	
	WSP: 678 - TL: 153 HF: 35 - EAR: 17.	
Mar. - 6 - 1931.	WSP - 711 mm TL: 162 mm H.F. - 54 mm E. 24 mm.	Iris d. brown. Disease has killed nearly all on island.
Mar 25 1931	TL: 373 mm TAIL: 197 mm H.F. 40 mm E. 19 mm.	IRIS: DARK BROWN. EVERYWHERE IN BUSH.
April 2. 1931.	TL: 368 mm T. 190 mm H.F. 38 mm E. 21 mm.	IRIS. DARK BROWN.
APR. 5. 1931.	TL: 368 mm T: 200 mm H.F. 37 mm. E. 19 mm.	Following an epidemic of measles in 1928 - Flying Foxes died by the thousands. At present April 1931 - I doubt if one dozen could be found on the Island.
APRIL 1931.	WSP: 847 mm TL. 187 mm. H.F. 50 mm E. 21 mm.	Paralysis of hind legs is now affecting cats, dogs + rats. Still the island swarms with rats.
APRIL 1931.	WSP: 869 mm T.L. 197 mm H.F. 51 mm: E. 27 mm.	
APRIL 1931.	WSP: 952 - TL: 199 mm H.F. 53 - EAR: 26.	

AUG. 1931. 7. Specimens were collected on Guam Island. -

♂ Iris Dark Brown
♀ " Chestnut Brown.

Measurements were forwarded with the bird sheets.

Number	Name	Sex	Locality
42046	FLYING FOX.	♀	PALAU CAROLINE ISLANDS.
42144	FLYING FOX.	♀ SMALL	" " "
42145	FLYING FOX. ^{SOV}	♀	" " "
42187	FLYING FOX.	♀ SMALL	" " "
42205	FLYING FOX.	♂ L.	" " "
42206	FLYING FOX.	♂ L.	" " "
44001.	ROCK WALLABY. ^{VERY RARE}	♂ NO PENIS	Wide BAY New BRITAIN MAVLO RIVER
44007	O'POSSUM	♂	Baining mts. wide BAY BALAYANG. New BRITAIN 2500 FT.
44008.	"	♀	" " "
44009.	"	♀	" " "
44010	LARGE FLYING FOX.	♀	" 2500 FT. " "
44011	" " "	♂	" " " "
44012	" " "	♀	" " "
44013	" " "	♀	" " " "
44014	" " "	♀	" " " "

Date	Measurements	Remarks.
Nov. 3, 1931.	WSP: 918mm TL: 198mm. HF: 44mm EAR: 24mm.	IRIS DARK BROWN. LARGE. EMBRYO INSIDE.
Nov. 15, 1931	WSP: 882mm TL: 181mm HF: 44mm EAR: 24mm.	IRIS BRIGHT BROWN.
" " "	WSP: 732mm TL: 155mm HF: 41mm EAR: 24mm	" " "
Nov. 19, 1931	WSP: 893mm TL: 189mm HF: 41mm EAR: 25mm	
Nov 21, 1931	WSP: 927mm TL: 197mm HF: 48mm EAR: 25mm	
Nov. 21, 1931.	WSP: 918mm TL: 202mm H.F. 47mm EAR 24mm.	
MAR. 30 1933.	LEN. Body - 667mm. TAIL H.F. 167mm (EAR: 56mm) 459mm	IRIS - BROWN - Tibia 167mm TARSUS - 222mm; SCAPULA - 96mm. HUMERUS - 101mm ULNA - 121mm
Feb 12 1933.	TL: 800mm - T: 360mm HF. 75mm EAR: 31mm	IRIS LIGHT BROWN. (FAIRLY COMMON)
Feb 20 1933.	TL: 823 - T: 346mm HF: 69 - EAR: 29.	- IRIS BROWN
MAR. 2 1933.	TL: 789 - T 357mm HF: 71 - EAR: 28.	- IRIS BROWN.
Feb 4. 1933.	WSP: 1415 - TL: 273 H.F: 69 - EAR - 27mm.	" "
Feb. 13 1933.	WSP: 1452 - TL: 332 H.F. 71 - EAR: 27.	COMMON FLOCKS OF THOUSANDS.
Feb. 26 1933.	WSP - 1420 - TL: 282 HF. 63 - EAR. 28.	" " " FLYING AT DUSK 500 TO 3000 Feet HIGH.
Feb. 10 1933.	WSP: 1405 - TL: 271 HF. 64 - EAR: 26	" " " MARCH & APRIL 1933.
Feb. 8. 1933	WSP: 1456 - TL: 303. HF: 66 EAR - 27.	" " " "

Number	Name.	Sex	Locality
44015.	LARGE FLYING-FOX.	♀	Wide Bay - NEW BRITAIN Balayang. Baining Mountains 2500 FT.
44016.	WHITE-FACED FLYING-FOX.	♀	Pteropus " " "
44017	" "	♀	" " "
44018	" "	♀	" " "
44019	" "	♂	" " "
44020	" "	♀	" " "
44021	" "	♂	" " "
44022.	BUSHY-FACED BLACK-RAT	♀	" " "
44023	FLYING SQUIRREL	♂	Wide Bay MAVLO NEW BRITAIN
44024.	SMALL BLACK FLYING FOX	♂	BAINING Mts. Balayang. 3000 - wide Bay.
44025	TUBE NOSE FLYING FOX	♂	" " "
44026	SMALL BROWN FLYING FOX	♂	" " "
44027	DISH FACED FLYING FOX	♂	Mave's River wide Bay.

Date:	Measurements	remarks:
FEB. 27. 1933.	WSP: 1440 MM TL: 286 MM HF: 67 MM EAR: 27 MM.	
MARCH 2 1933.	WSP: 903 - TL - 188 MM. HF: 42 - EAR - 26.	quite common at 2500 feet. found in low shrubs sleeping during day time.
MAR. 10. 1933.	WSP. 881. TL: 183. H.F. 44. EAR: 24.	
FEB. 12 1933.	WSP: 854 - TL: 188 HF: 41 EAR: 25.	
MAR. 18 1933.	WSP: 859 - TL: 191. MM HF: 45 EAR: 25.	
MAR. 1. 1933.	WSP 867 MM - TL: 191 " " HF. 43 MM EAR - 25 " "	
MAR. 4. 1933.	WSP: 889 MM TL - 183 MM. HF: 43 MM EAR: 25 MM.	
MAR 4. 1933.	TL. 288 - T 289. HF: 63. EAR - 25.	In the ground. caught by native dog. IRIS BROWN.
APRIL 7 - 1933.	TL: 327 - TAIL 176. HF 28 - E 22.	
MAR. 12 1933.	WSP 726 - TL 156. T: 29 HF: 36 : EAR - 27.	Rare:
FEB - 25 1933.	WSP: 424 - TL. 91. T 14 HF: 13. EAR: 16.	Rare
FEB. 17 1933.	WSP: 472 TL: 99 HF: 24 E. 17.	
MAR 28 1933.	WSP: 451 - Body - 88 TAIL - 42 HF. 19 - EAR - 34.	

Number	Name	Sex	Locality
44559	O'Possum	♂	Rooke Island. N. E. Coast New Guinea
44633	O'Possum	♂	Long Island N. E. Coast New Guinea
44634	"	♀	" "
44635	"	♂	" "
44636	"	♂	" "
44637	"	♂	" "
44638	"	♂	" "
44639	"	♀	" "
44640	"	♀	" "
44656	SMALL BLACK FOX	♂	" "

Date	Measurements	Remarks
Nov 1 1933	TL. 702 mm TAIL 305 mm H.F. 66 mm EAR 27 mm	not common.
Nov. 14 1933	TL: 470 TAIL 330 H.F. 78 - EAR. 30	Iris Brown very common
"	TL. 420 T. 310 H.F. 69. EAR 25.	" "
"	TL. 435 T. 340 EAR. 26. H.F. 72	" "
Nov. 16. 1933	TL. 428 mm TAIL 330. H.F. 75. EAR. 24	" " " "
Nov 17 4	TL. 400 (Body) T. 320. H.F. 65 mm EAR. 28 mm	" " " "
" "	T.L: 398 mm T 305 mm H.F. 67. EAR. 26. mm	" " " "
" "	TL. 440 mm T. 290 mm H.F. 63. E. 27.	" " " "
" "	TL. 430 mm T 280 mm H.F. 67 mm E. 27.	" " " "
Nov. 20 / 33	WSP: 794 mm TL: 157 mm H.F. 51. mm EAR. 24.	

Number	Name	Sex	Locality
45023	FLYING FOX	♀	Molai Bay. Manus Admiralty Islands
45036	"	♀	" " "
45073	Opossum	♀	Orakui Manus. Admiralty Islands
45097	FLYING FOX.	♂	" " "

Rambutyo Island Admiralty

45490	Flying fox	♂	Rambutyo Isd.
45491	Opossum	♀	" "
45492	"	♀	" "
45493	"	♀	" "
45494	"	♂	" "

Date	Measurements	Remarks:
January 8-1934	WSP - 1360 - TL. 280 mm H.F. 64. EAR - 25 mm.	Iris Brown Fairly common
Jan 9. '34	WSP - 1375. TL: 271 mm H.F. 65 mm EAR. 26 mm	- - -
Jan 13 '34	Body 450 Tail 400. H.F. 73 mm EAR. 25 mm.	Iris Brown very fat + difficult
Jan 15. 1934	WSP: 1150 mm TL: 260 mm H.F. 62. mm. EAR. 25 mm.	-

Islands. Bismarck Archipelago
April 15-20 1934.

Iris Brown	WSP. 1170 - T.L. 215. mm	H.F. 55 mm EAR 25 mm.
" "	L. 480 mm Tail 390 mm	H.F. 67 mm EAR. 20 mm
" "	L 500 mm Tail 430 mm	H.F. 67 mm. EAR 23 mm.
" "	L 520 mm Tail 440 mm	H.F. 68 mm. EAR 23 mm.
" "	L 478 mm Tail 384 mm	H.F. 68 mm EAR. 21 mm.

number	name	sex	locality
45857	LARGE FLYING FOX	♀	Lihir Island
45858	"	♀	Lihir Group.
45859	"	♂	Bismarck Archipelago.
45860		♀	
45861		♀	
45862		♀	
45863		♂	
45864		♂	
45865		♀	
45866		♀	
45867	BLACK FLY FLY FOX.	♀	"
45868	"	♂	"
46209	Opossum	♂	"
46210	"	♀	"

2 very small JUV. in pouch see alcohol.

Date:

date	WSP.	L. mm	H.F.	EAR.	IRIS
Sept 13 1934.	1435 mm.	310 mm	68 mm	31.	BROWN
	1458	303	69	30.	
	1485	345	74	32	
	1385	295	74	28.	
	1443	308	69	29.	
	1433	305	74	30	
	1498	318	74	30	
	1443	336	71	30	
	1489	297	72	29	
	1496	308	73	30.	
SEPT. 17 th 1934.	868	192	21	36 mm	IRIS BROWN.
	863	191	22	36 mm	
NOV 10 1934		467	351	78 " "	IRIS BROWN.
NOV 2 1934		428	357	73	

Locality

number	name	sex	Locality
46211	DISH FACED FLYING FOX.	♂	LIHIE ISLAND - LIHIE GROUP. BISMARCK ARCH.
46212	TUBE NOSED FLYING FOX	♂	LIHIE ISLAND LIHIE GROUP BISMARCK ARCHIPELAGO
46536	O'POSSUM.	♀	TABAR ISLAND BISMARCK ARCHIPELAGO. TABAR GROUP.
46537	"	♂	" " "
46538	"	♀	" " "
46539	LARGE FLYING FOX.	♀	" " "
46540	"	♀	" " "
46541	MEDIUM GREY FLYING FOX.	♀	" " "
46542	BLACK WHITE COLLAR FLYING FOX.	♀	" " "
46543	SMALL RED BAT.	♀	" " "
46544	"	♀	" " "
46545	"	♂	" " "

DATE	W.S.P.	Body LENGTH	TAIL	H.F.	EAR	IRIS	Remarks
NOV. 10 1934.	430	128	"	17	32	TAN.	only one eye. other rudimentary.
NOV. 10 1934	408 mm	86	17	14	11	TAN.	night flying.
JAN. 13-31. 1935		TOTAL LENGTH 670	280	48	27	BROWN	with Adv. JUV.
"		687	292	64	25	"	ADULT ♂.
"		640	280	58	27	"	with very small JUV.
"	1491	297	-	72	30	"	with JUV.
"	1408	298	-	71	29.	"	with adv. JUV.
"	852	177	26	37	28	"	with juv.
"	786	178	-	48	23.	"	with FOSTUS.
"	270	90	-	6	11	Bu	
"	265	86	-	7	10	"	
"	272	89	-	5	12	"	

Number	NAME	Sex	LOCALITY.		DATE	WSP	TOTAL LENGTH OR Body	TAIL	H.F.	EAR	IRIS	Remarks.
46 546.	DISH FACED BAT.	♀	TABAR ISLAND	BISMARCK ARCHIPEL	JAN 13-31 st 1935.	320	98	33	11	20	Brown	night flying - rests under leaves or in caves.
46 547	"	♂	"	"	"	321	98	37	11	23	"	" "
46 548	"	♀	"	"	"	318	99	35	11	22	"	" "
46 549	MEDIUM GREY BAT	♂	"	"	"	487	TOTAL LENG. 121	14	21	17	"	caves.
46 550	"	♀	"	"	"	474	116	15	20	17	"	"
46 551	"	♂	"	"	"	474	118	17	20	17	"	"
46 552	"	♀	"	"	"	482	119	17	19	14	"	"
- -												
46 553.	BLACK FLYING-FOX.	♀	BOANG ISLAND	TANGA GROUP	Feb. 3-8-1935	859	Body 184	21	36	26	"	WITH JUVENILE. (alcoholic)
46 554	O' POSSUM	♀	"	"	"		TOTAL 620	265	49	24		WITH ADY. JUV.

(over)

FORWARDING WITH ALCOHOL MATERIAL

1. Dish-faced BAT.

CONTRIBUTED BY

MR. R. N. WAYNE.

ULU - DUKE OF YORK GROUP.

Dec. 1934.

Rabaul
Territory New Guinea

2. VERY small juv. O'possums⁽²⁾ newly born
Lihir Island - Lihir Group. Nov. 1934.

3. FOETUS - BLACK TUBE NOSE FLY FOX
Lihir ISD.

4. LARGE FLYING FOX 2 JUV
Lihir ISD.

5. FOETUS LARGE FLYING FOX.
Lihir ISD.

6. BLACK FOX WHITE COLLAR JUV.
TABAR ISD.

7. ASSORTED SMALL FLYING FOXES (6)
BATS
TABAR IS.

8. Dish Faced BAT 4.
TABAR ISD.

FOR FEBRUARY. 1935.

9. BLACK FLYING FOX FOETUS
TABAR.

10. MEDIUM GREY FLY FOX. JUV.
TABAR.

11. BLACK FLYING FOX JUV.
BOANG ISD TANGA GROUP.

v w

40

2

40

40

40

4

40

4

4

4

4

4

4

4

4

4

4

4

4

4

4

4

4

4

12

4

2

4

4

2

4

4

4

4

4

4

W

4

4

4

4

4

4

4

4

4

4

4

4

4

4

4

4

4

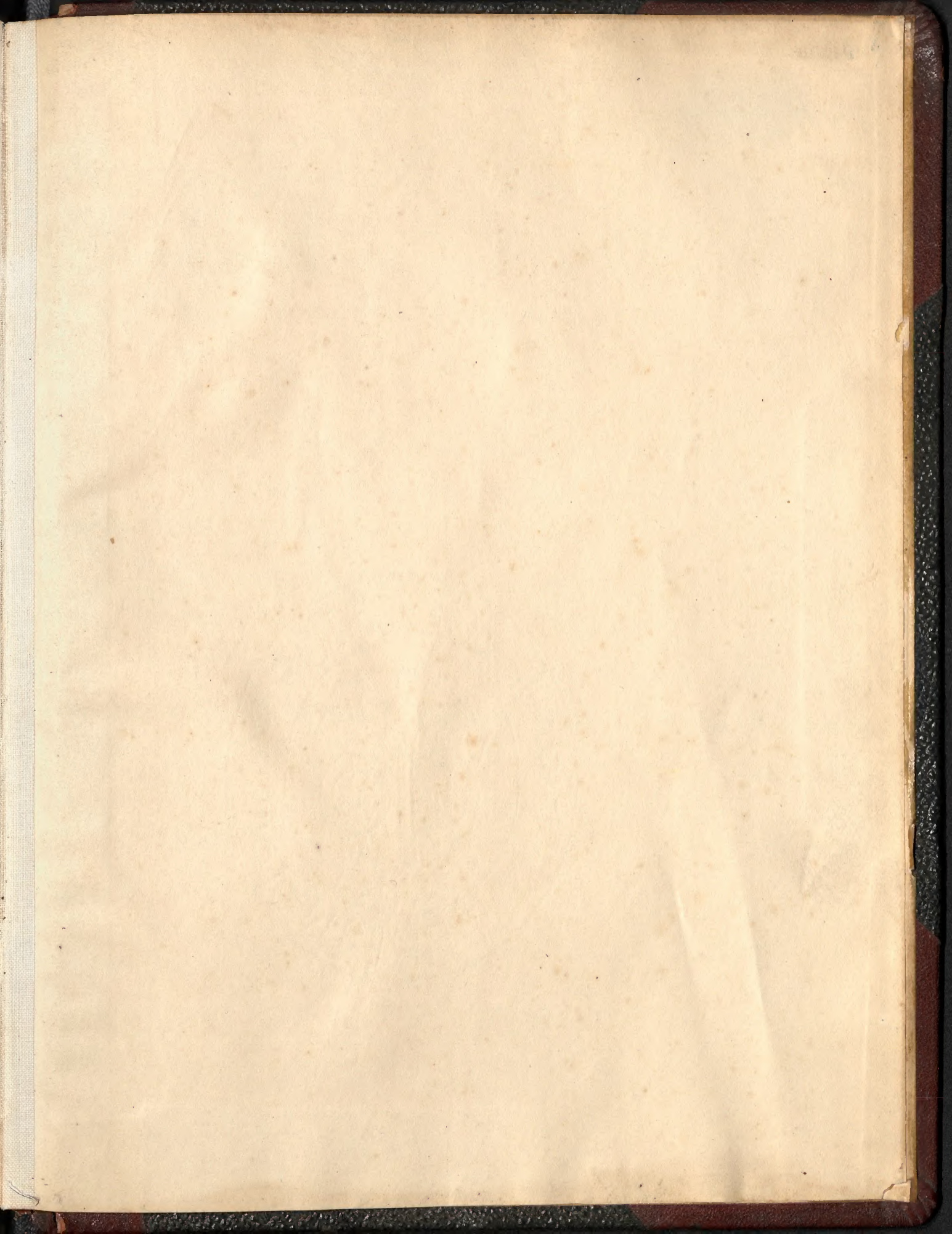
4

4

4

4

4



MAMMALOGY ARCHIVE



100213083

