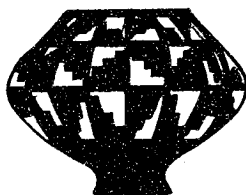


關東廳博物館  
考古圖錄



昭和八年七月刊行

## 序 言

關東廳博物館ハモト關東都督府滿蒙物産館ト稱シ大正六年四月其創設ヲ見タルモノニシテ翌七年十一月本館ノ成ルニ及ビ博物館ト改稱シ次テ同八年四月都督府ノ改制ト共ニ關東廳ノ名稱ヲ冠シ爾來今日ニ及ベルモノナリ。

本館ハ露國統治時代ニ將校集會所トシテ起工ヲ見タルモノ半成ノ儘ナリシヲ其後大正五年工費約三十萬圓ヲ投ジ二歳ヲ閲シ同七年竣工シタルモノナリ。

本館ハ滿洲蒙古及支那本土ニ於ケル考古及風俗參考品ヲ主體トシ其ノ標本總數三萬餘點ヲ蒐藏スルモノナルモ輒近東亞ニ於ケル考古學ノ趨勢ハ本館ヲシテ益々考古學的博物館トシテ其態容ヲ定メントスルノ機ニアリ本館曩ニ東亞考古學會ト提携シテ我ガ關東州内ニ於ケル[貔子窩(昭和二年)收羊城(昭和三年)南山裡(昭和四年)等ノ先史及原史時代ノ遺跡

ヲ調査シ東亞考古學ノ發達ニ貢獻セシメタルコトハヒトシク學界周知ノ事項ナリ。他方、州内牧城驛沙崗屯發見ノ漢墓(昭和六年)ノ如キモ亦益々本館ノ考古的地位ヲ向上セシムルモノト云フベシ。

本館藏品ノ増加ニ關シテ特ニ記スベキハ考古部ノ搖籃時代ニ於イテ篤志ノ士ノ厚意ニ俟ツ所多ク就中、大谷光瑞師ノ中央亞細亞及印度ニ於イテ蒐集セラレタル遺品竝ニ南滿洲鐵道會社ヨリ滿洲及蒙古發見ノ多數品目ノ交付ヲ受ケタル等ナリ。

本圖錄ハ固ヨリ其集錄スル所ハ藏品ノ一部ニ過ギズ且ツ取捨宜シキヲ得ザルモノアリト雖モ亦以テ列品ノ概觀ヲ得ルニ庶幾カラムカ、乃チ此ノ序ヲ作り我ガ博物館ノ由來ヲ略敘シテ、之ヲ卷首ニ掲グト云爾。

昭和八年七月

關東廳內務局長室ニ於テ

關東廳博物館館長 日

下

辰

太

# 關東廳博物館考古圖錄目次

## 第一部 滿洲發見品

### (A) 先史時代及漢以前時代

第一 滿洲旅順方家屯南山裡發見石鏃及骨角器

第二 滿洲各地發見石器

(1) ① ③ 滿洲撫順烽火臺附近發見打石斧

(4) ⑤ 滿洲大連濱町貝塚發見石庖丁

(6) 滿洲旅順大臺山發見石庖丁

(7) ⑧ 鐵嶺附近發見石斧

第三 滿洲大連濱町貝塚發見石器

(1) 有孔圭形石器 (2) 有孔石劍 (3) 大形扁平石斧

第四 滿洲貔子窩發見遺物

(1) 單砬子發見有孔石斧及石劍石鏃

(1) 高麗塞發見高形土器破片

第五 滿洲貔子窩單砣子發見彩繪土器

第六 滿洲貔子窩高麗塞發見甗形土器

第七 滿洲旅順附近發見土器

(1) (4) 旅順老鐵山積石塚發見土器

(2) (3) 旅順方家屯南山裡發見土器

第八 滿洲旅順牧羊城官屯子河附近發見劍柄形銅器

第九 滿洲旅順牧羊城官屯子河附近發見甗棺

第一〇 滿洲各地發見銅劍

(1) 旅順柏嵐子附近發見銅劍

(2) 旅順牧羊城南山裡于家屯發見銅劍

(3) 旅順南山裡刁家屯發見銅劍

(4) 旅順南山裡劉家屯發見銅劍

第一一 滿洲各地發見錢貨

(1) 旅順營城子雙臺溝發見明刀錢

(2) 貔子窩發見明刀錢

(3) 普蘭店附近發見明刀錢

(4) 奉天潘建臺發見明刀錢

(5) 普蘭店三官廟發見布錢

(6) (7) 旅順南山裡發見布及圓錢

(8) 貔子窩發見一刀錢

(B) 漢 時 代

第一二 滿洲旅順南山裡發見方格文土器

第一三 滿洲旅順牧羊城址發見半瓦

第一四 滿洲各地發見墓甃

第一五 滿洲旅順方家屯南山裡墳墓發見銅製遺物

(1) 銅製熊脚 (2) 小形鳥形銅器

(3) (5) 小形獸面金具 (4) 四葉座金具

第一六 滿洲古墳發見鏡鑑

(1) 遼陽發見漢日光鏡

(2) 蘆家屯貝墓發見漢內行花文日光鏡

第一七 滿洲旅順南山裡古墳發見各種青銅遺物

第一八 滿洲旅順南山裡古墳發見獸環壺

第一九 滿洲旅順南山裡具墓發見土製博山爐

第二〇 (1) 滿洲旅順南山裡古墳發見土製扁壺

(2) 滿洲海城附近發見着彩鼎形土器

第二一 漢代明器

(1) 營口附近古墳發見瓦窰

(2) 旅順南山裡古墳發見瓦窰

第二二 (1) 旅順牧城驛沙崗屯第二號墓(壁畫古墳)發見瓦匂

(2) 同 上發見瓦奩

第二三 (1) 旅順牧城驛沙崗屯第一號墓發見瓦屋

(2) 同 上第二號墓發見着彩瓦窰

第二四 滿洲旅順牧城驛沙崗屯第二號墓發見着彩瓦燈

第二五 滿洲旅順牧城驛沙崗屯第二號墓發見着彩瓦屋

第二六 滿洲旅順牧城驛沙崗屯第二號墓發見瓦燈



第二七 (1) 滿洲旅順砂崗屯第一號墓發見瓦犬

(2) 同 上發見瓦豬

第二八 滿洲熊岳城貝墓發見土偶

第二九 滿洲蘆家屯貝墓發見土偶

第三〇 滿洲遼陽太子河北發見古墓石室

(C) 遼 金 時 代

第三一 吉林省高麗城址附近墳墓發見金銅製假面

## 第二部 蒙古發見品

(A) 先 史 時 代

第三二 (1) 內蒙古小庫倫發見多頭環狀石斧

(2) 同 上發見有孔石斧

第三三 內蒙古達拉民安發見打石斧

第三四 內蒙古小庫倫發見鬲形土器

第三五 (1) 內蒙古小庫倫發見四耳附素燒土器

(2) 同 上發見鬲形土器

### 第三部 支那發見品

(A) 漢及漢以前時代

第三六 支那甘肅省發見彩繪土器

第三七 支那河南省彰德府安陽縣殷墟發見白色土器破片

第三八 支那直隸省易州發見先秦半瓦

第三九 支那發見各種玉器

(1) } (5) (7) (8) 佩玉 (6) 圭形玉器 (9) 有頭瑛狀玉器

第四〇 支那發見方格蟠蛇文鏡

第四一 支那發見細線地內行花文鏡

第四二 支那發見尙方作竟方格規矩鏡

第四三 支那發見饗餞文銅甗

第四四 支那發見銅豆

第四五 (1) 支那發見有脚銅竈

(2) 支那發見銅匱

第四六 支那北疆發見(綏遠式)銅壺

第四七 支那北疆發見各種小形青銅遺物

第四八 明器馬像

第四九 支那發見彩壺

第五〇 支那河南省發見大形紋甗

第五一 支那發見紋甗

(B) 六朝唐及以降時代

第五二 支那河南省北魏石佛像頭部

第五三 支那唐代明器牛像

第五四 支那陝西省西安府唐代金銅釋迦立像

第五五 支那唐代石彫佛立像

第五六 支那武平二年石彫三尊佛

第五七 支那山西省太原府宋代木彫菩薩立像

第五八 支那唐代白釉長頸壺

第五九 (1) 支那宋代繪高麗壺

(2) 同 上陶枕

第六〇 (1) 支那明万曆年款五彩水盤

(2) 支那清康熙代三彩水盤

#### 第四部 中央亞細亞發見品

第六一 支那新疆省吐魯番唐代墳墓發見高昌國人男子木乃伊

第六二 支那新疆省喀喇和卓發見高昌國延和九年麴孝嵩氏墓表

同 上發見延昌二十年解氏墓表

第六三 (1) 支那新疆省喀喇和卓發見高昌國延昌四年張氏墓表

(2) 同 上發見延壽十一年侯慶伯氏墓表

第六四 (1) 支那新疆省喀喇和卓墳墓發見唐代木心男子騎馬土偶

(2) 同 上發見男子武裝土偶

第六五 支那新疆省吐魯番墳墓發見唐代木彫男子武裝土偶

第六六 (1) 支那新疆省喀喇和卓墳墓發見木心男子騎馬土偶

第六七

(2) 同 上發見男子土偶

(1) 支那新疆省吐魯番墳墓發見唐代木心女子土偶頭部

(2) 同 上發見女子騎馬土偶

第六八

支那新疆省吐峪溝發見土製彩畫壺

第六九

支那新疆省吐峪溝發見陶瓶

第七〇

支那新疆省發見石膏製佛像

第七一

支那新疆省和闐庫木吐喇發見陶製小像

第七二

支那新疆省庫木吐喇千佛洞發見唐塑像頭部

第七三

支那新疆省木頭溝發見唐塑像頭部

第七四

支那新疆省吐魯番荒城內發見紋甗

第七五

支那新疆省木頭溝發見唐宋間壁畫斷片

第五部 印度發見品

第七六

(1) 印度健駄羅發見石彫釋迦說法像

(2) 同上發見石彫釋迦說法像

第七七

(3) 同上發見石彫釋迦說法像

(1) 印度健駄羅發見石造佛塔一部

(2) 印度健駄羅發見石彫釋迦成道像

第七八

(1) 印度健駄羅發見石彫釋迦說法像

(2) 同上發見石彫釋迦降誕及諸天禮拜像

(3) 同上發見石彫斷片

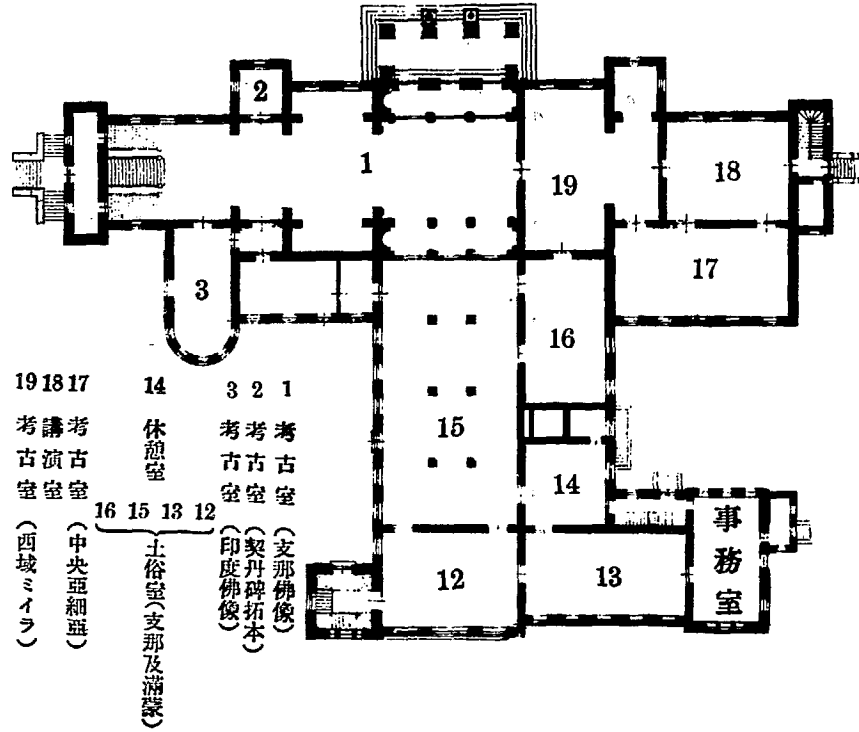
第七九

印度健駄羅發見石彫佛頭

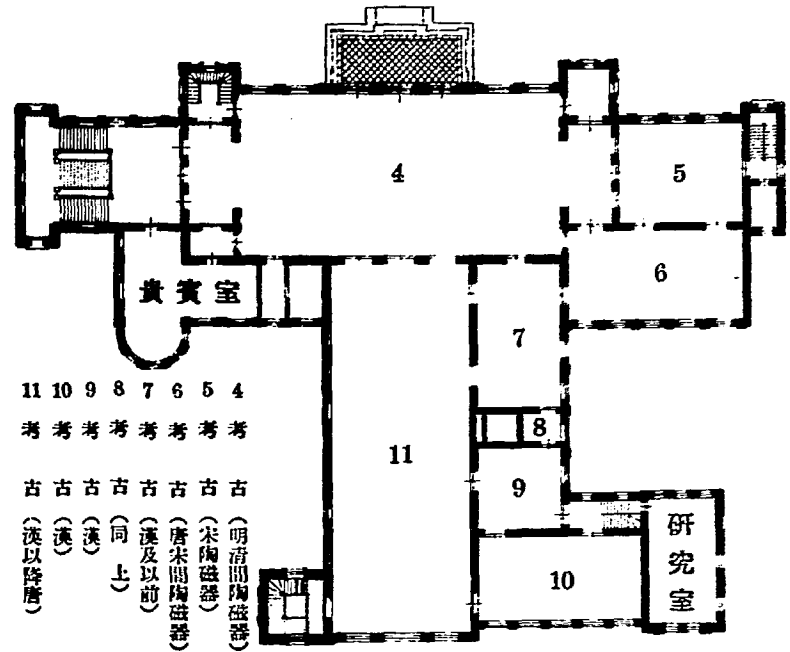
第八〇

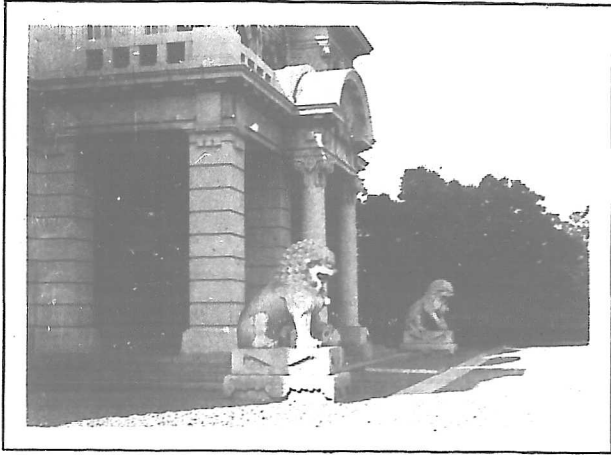
印度摩訶菩提道場(佛陀伽耶)發見石造釋迦觸地印像

關東廳博物館下階陳列室平面圖



關東廳博物館上階陳列室平面圖





關東廳博物館

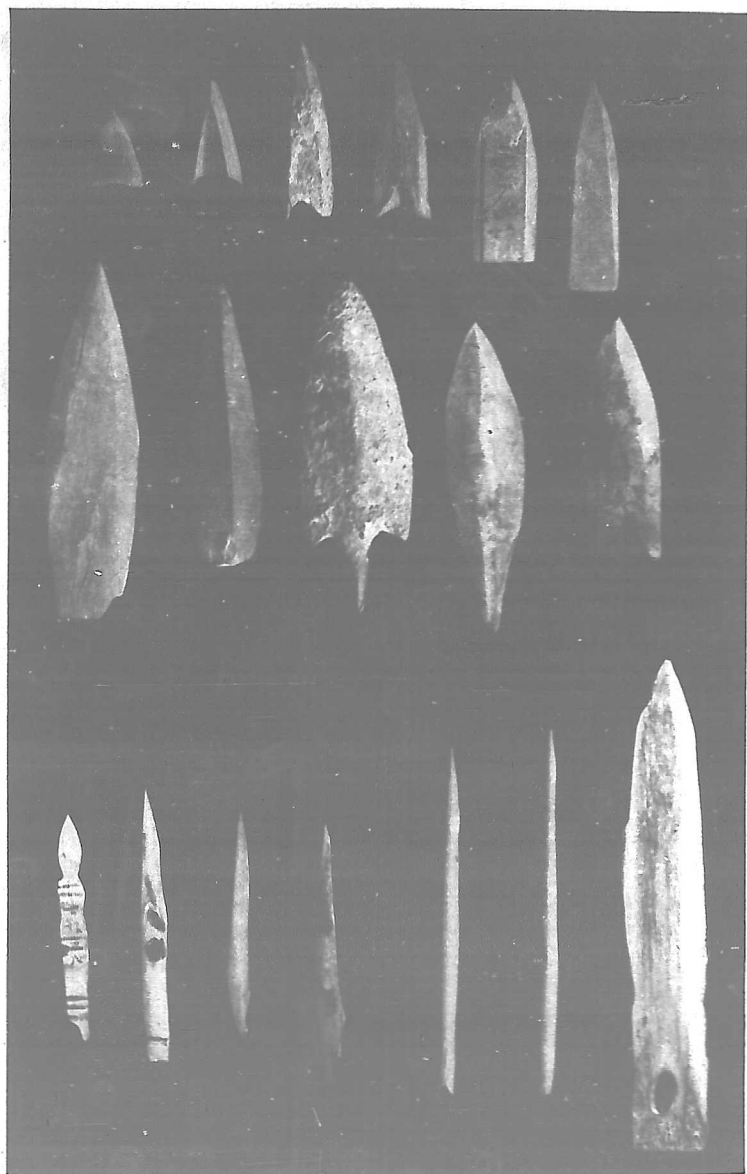




I

第

一



1  
6

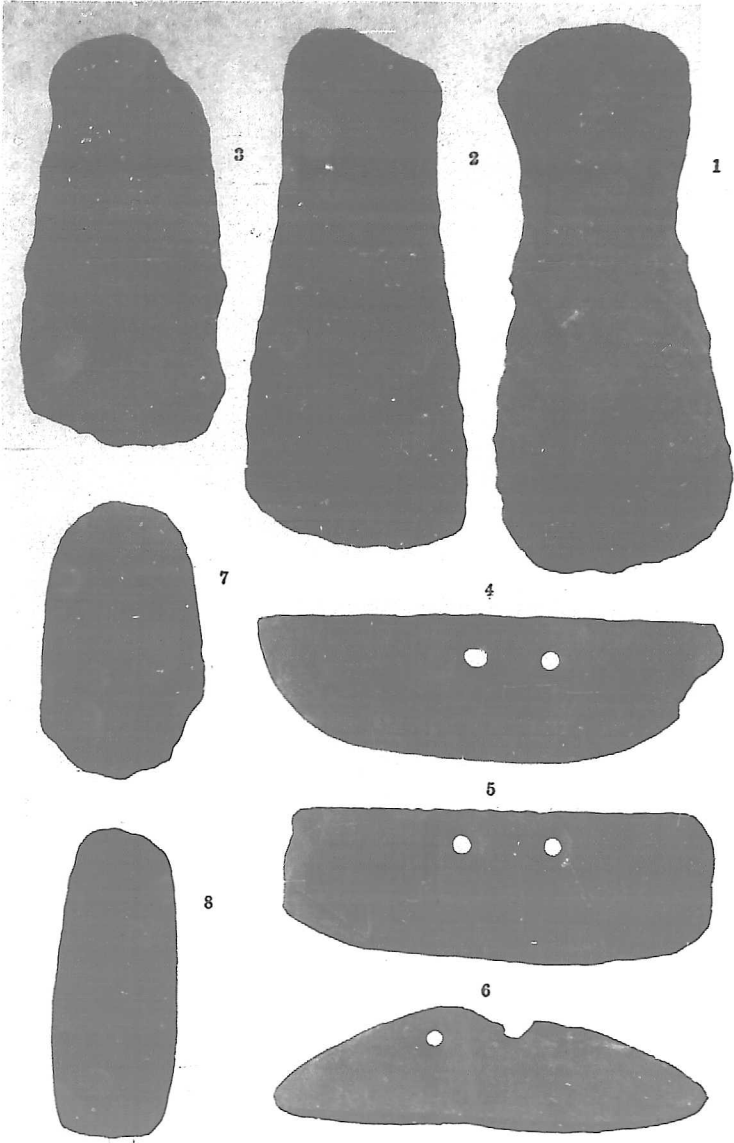
7  
11

12  
18

34

II

第  
二

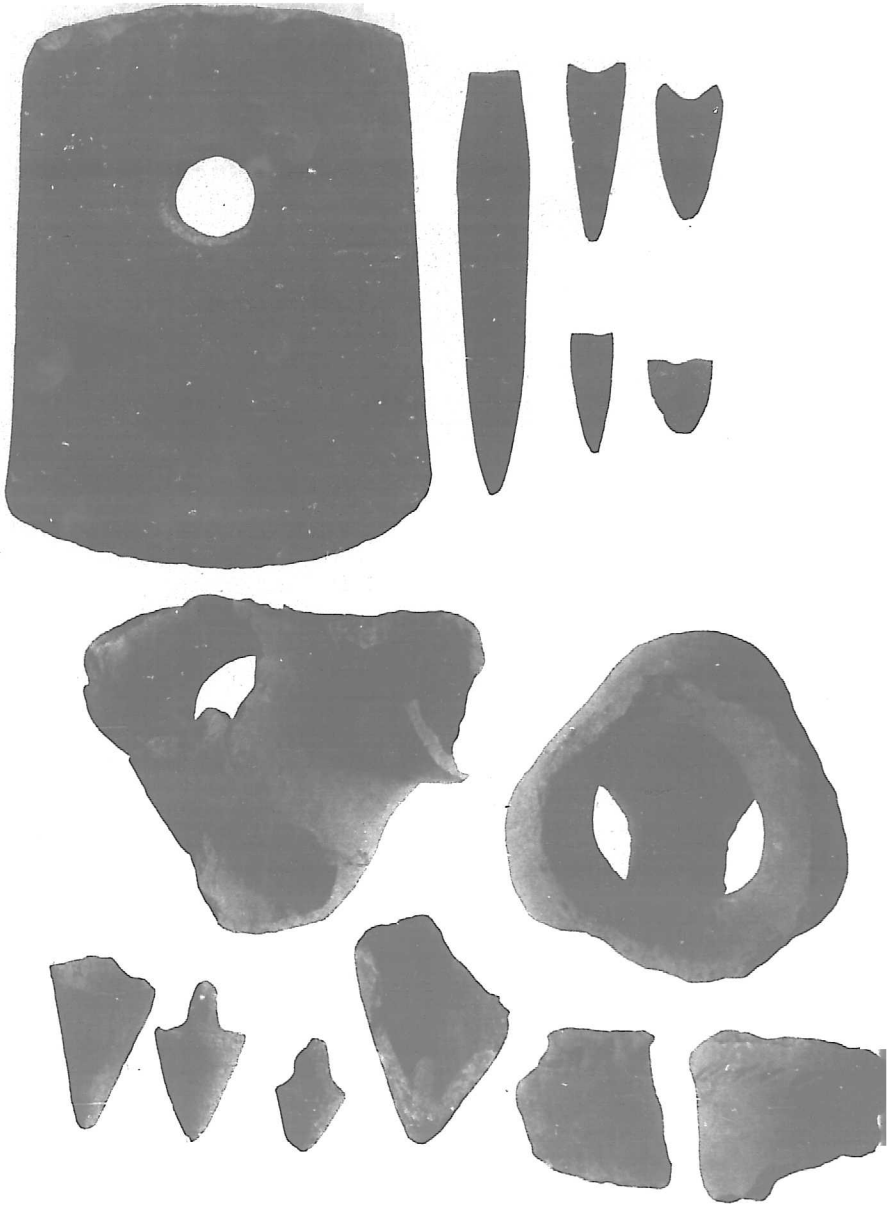




IV

第

四



V  
第  
五



4



4

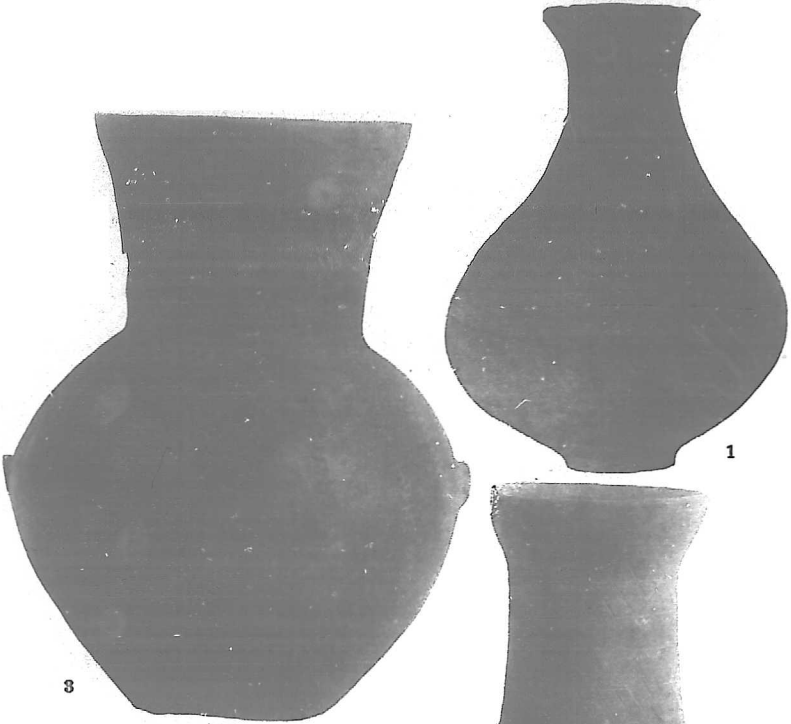
VI

第  
六



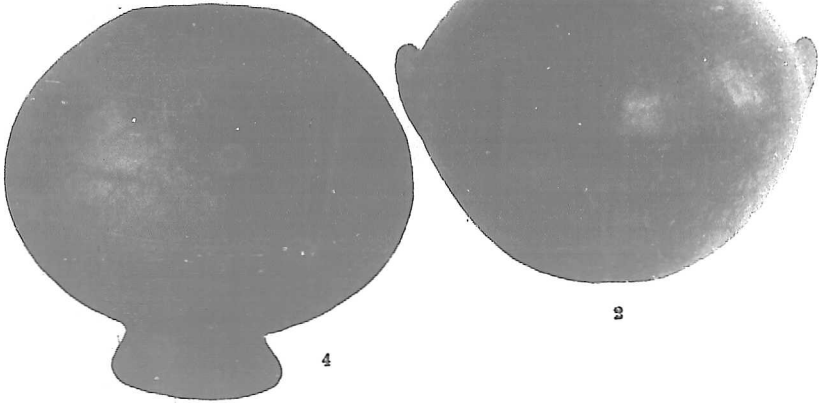
VII

第七



1

3



2

4

VIII

第

八

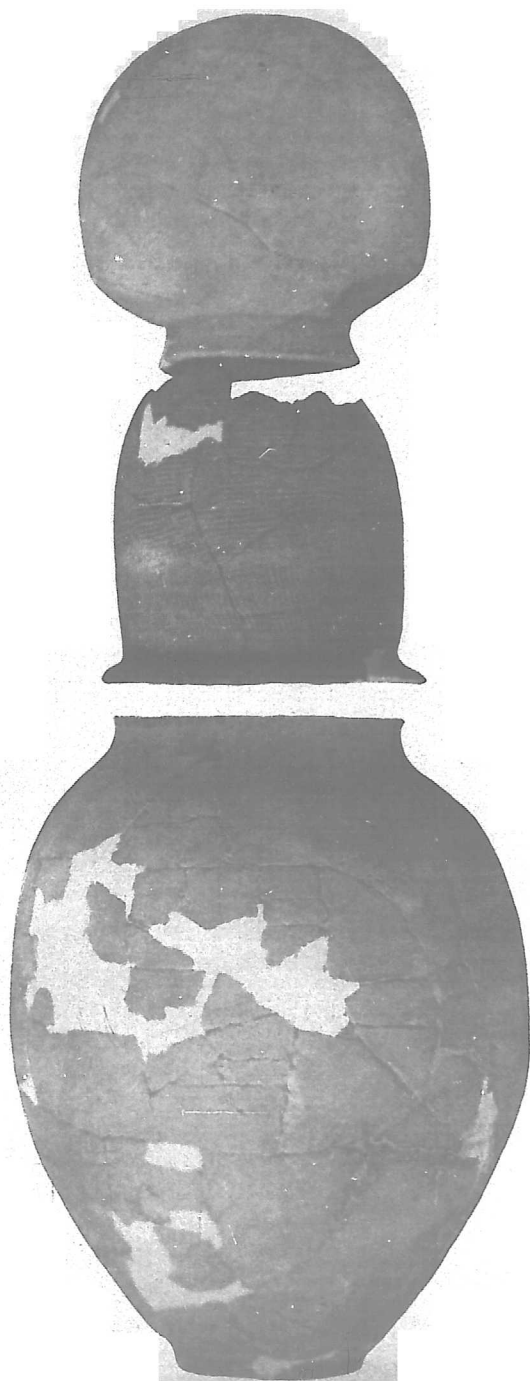




IX

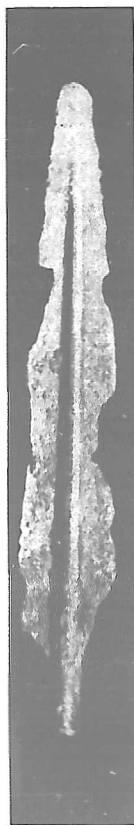
第

九





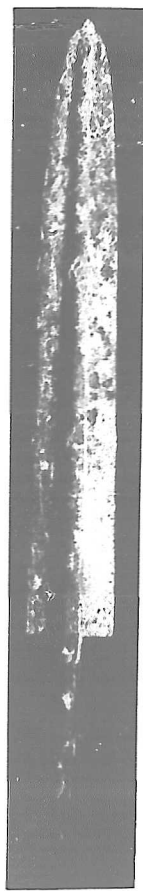
4



3



2



1

XI 4

3

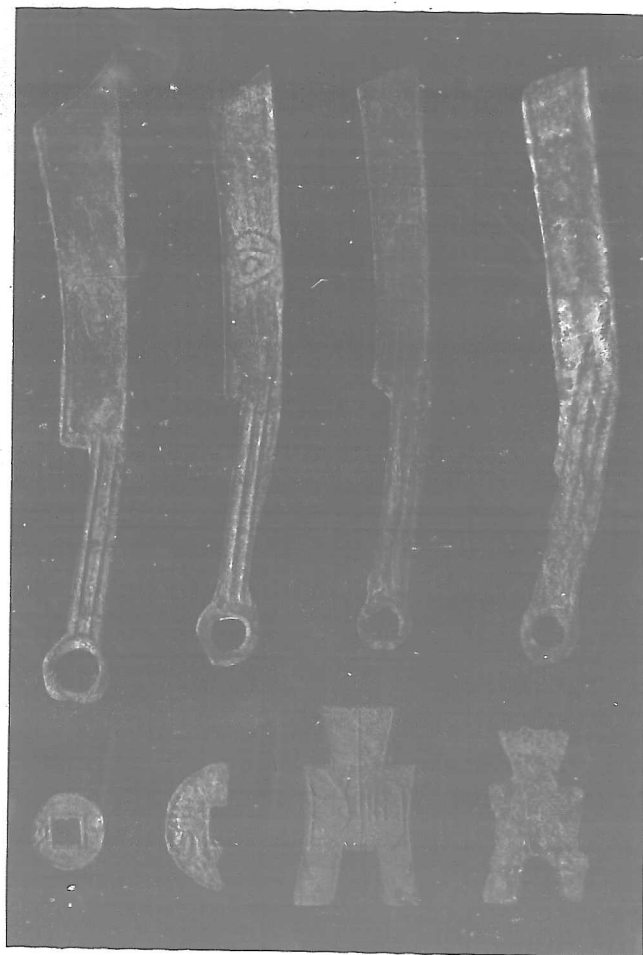
2

1

第

一

—



8

7

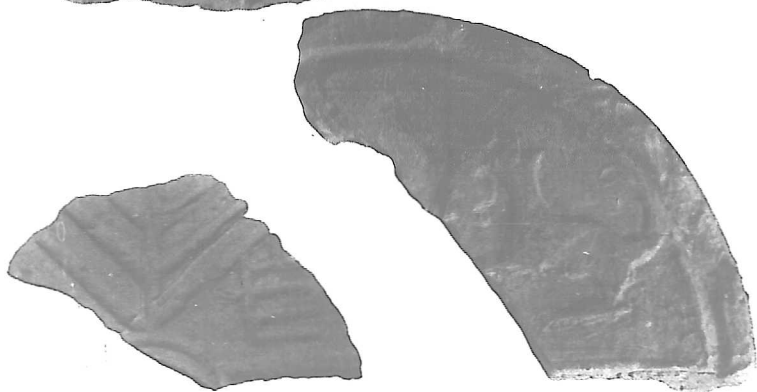
6

5



XIII

第一三



XIV

第一四四



X V

1

第  
一  
五



2

4

3

5

½

XVI

第一六



1



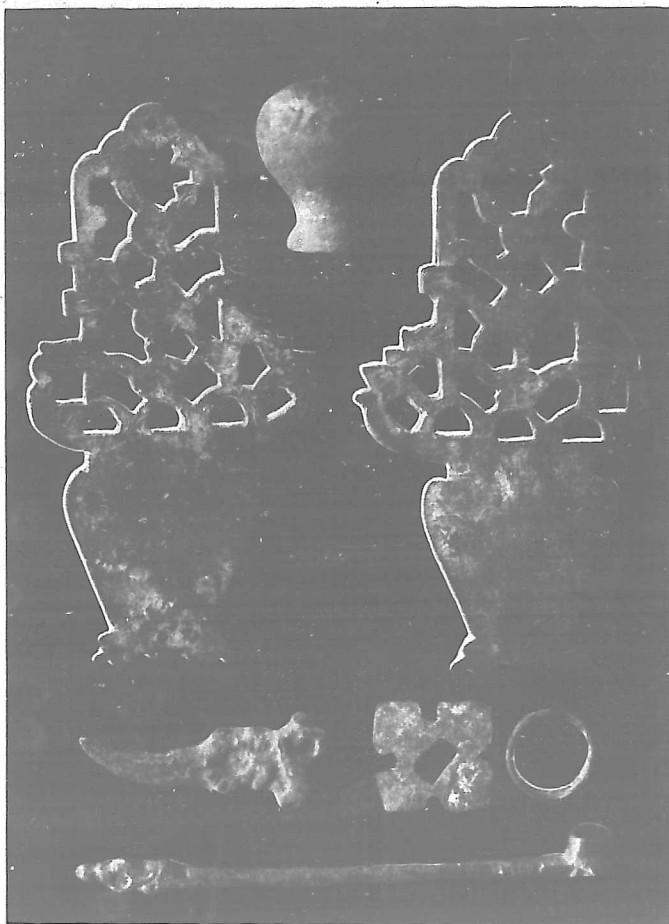
2

3/4



XVII

第一七



XVIII

第一八



XIX

第一九



XX

〇 二 第



1

½



2

½

XXI

第  
二  
一



1/2

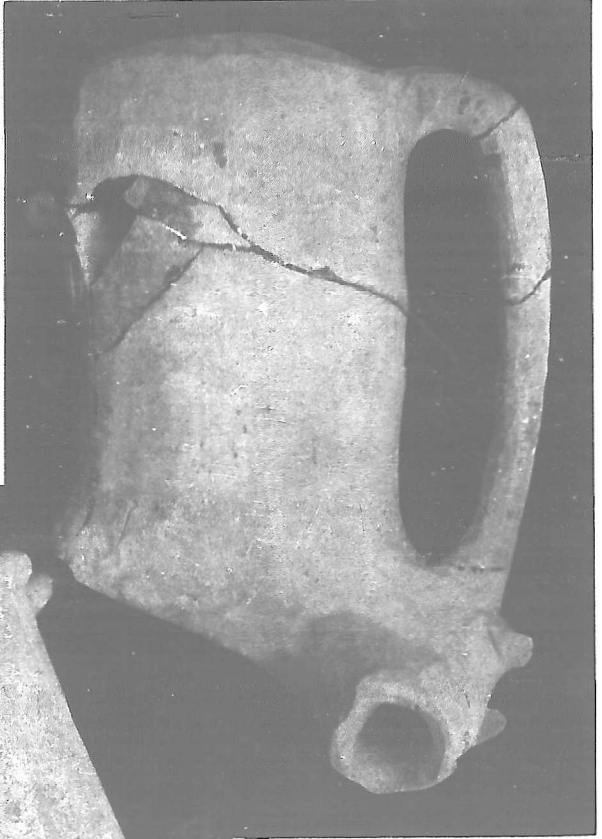


1/2

XXII

第  
二  
二

1



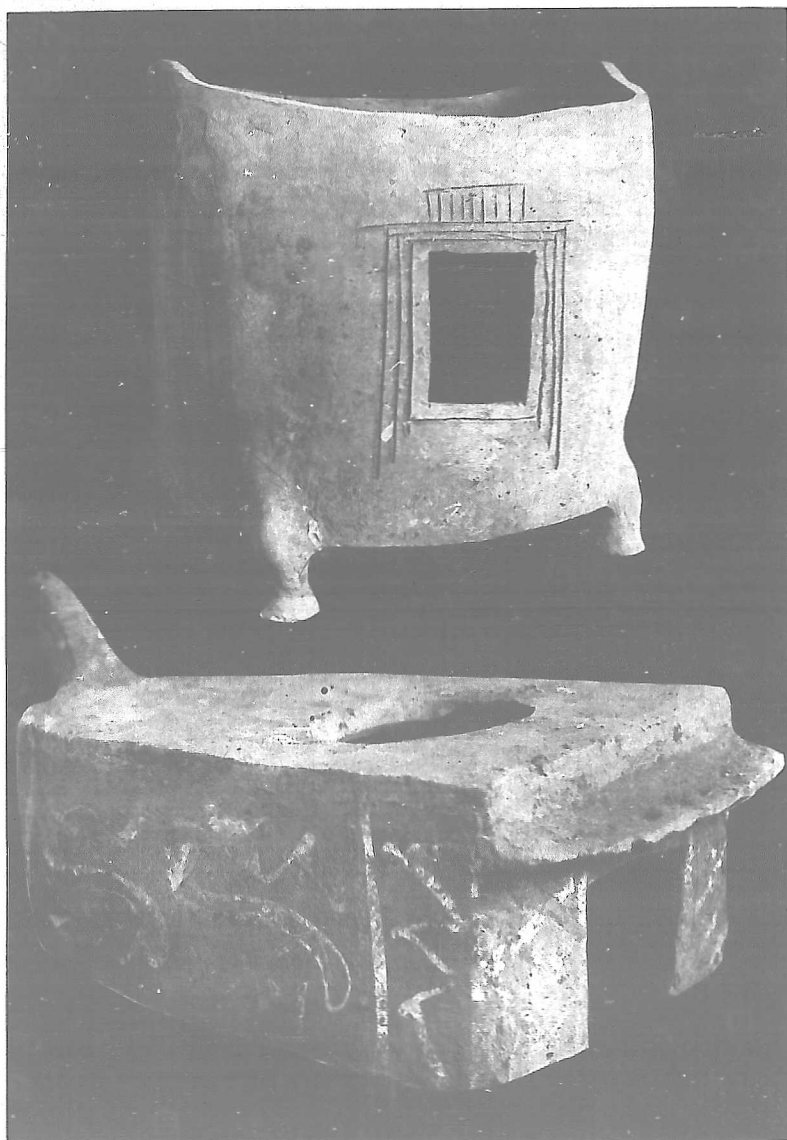
2



1/2

XXIII

第  
二  
三



1i

2

1/2

XXIV

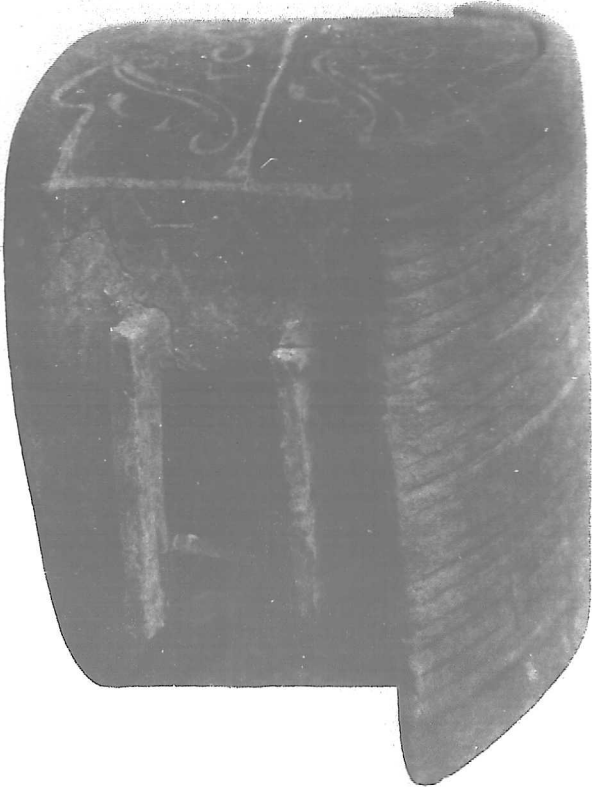
第二四





XXV

第二五



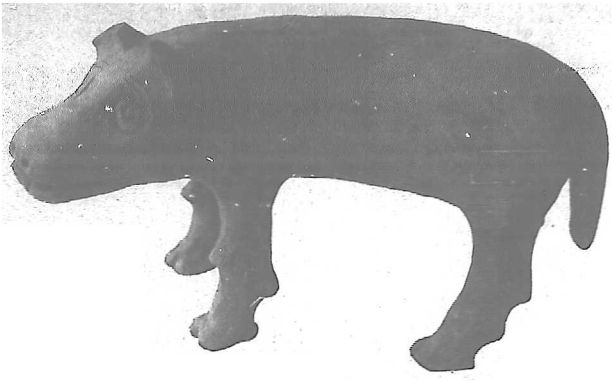
XXVI

第二六

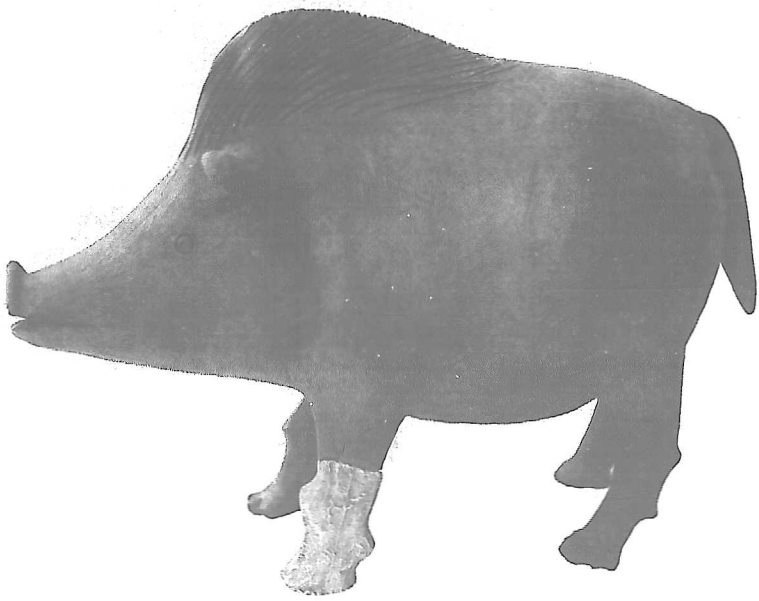


1/2

1



2



1/2

XXVIII

第二八



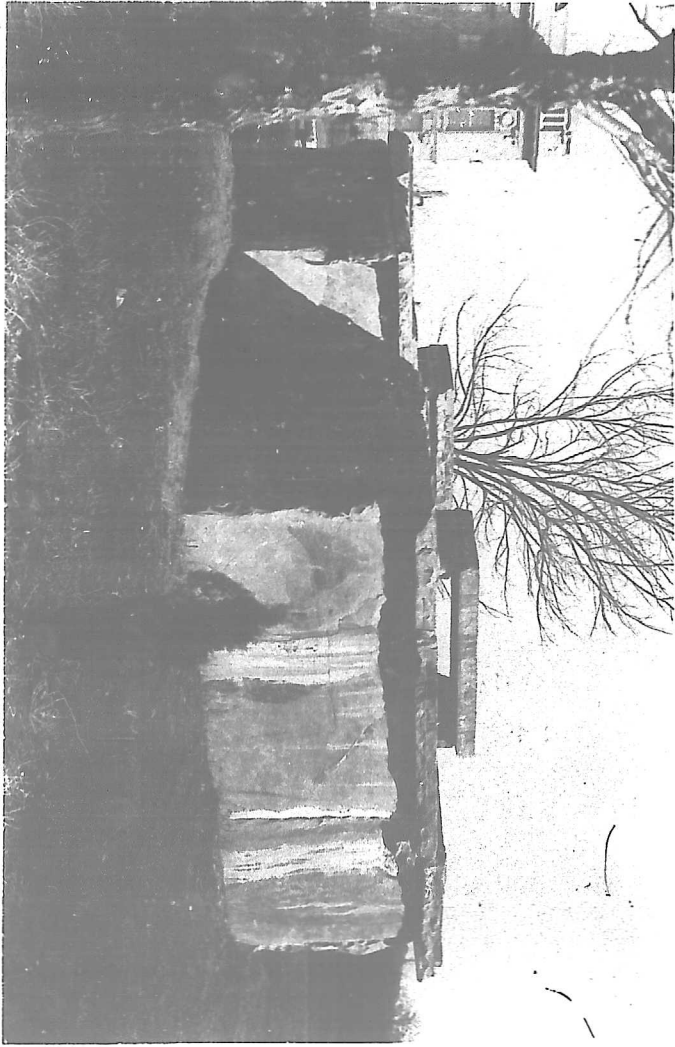
XXIX

第二九



XXX

第三〇



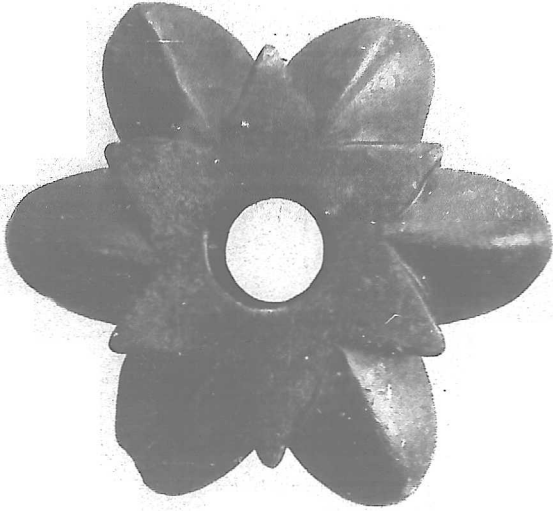
XXXI

第三  
一

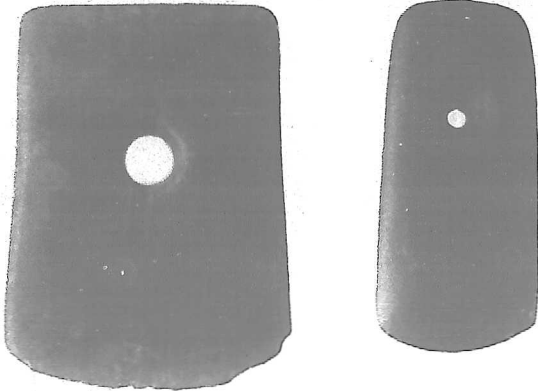


XXXII

第三  
二



1



2

1/2



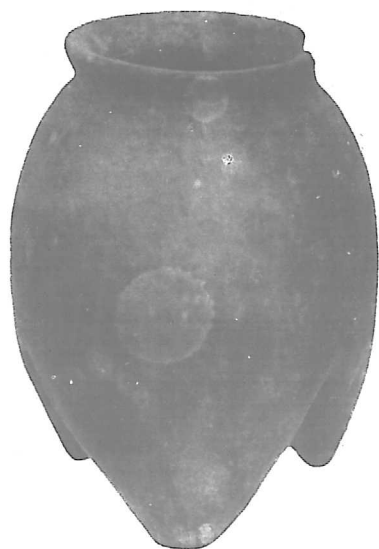
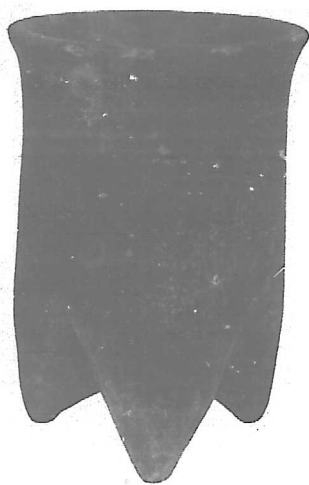
XXXIII

第三三



XXXIV

第三  
四



XXXV

第  
三  
五



1

2

1/2

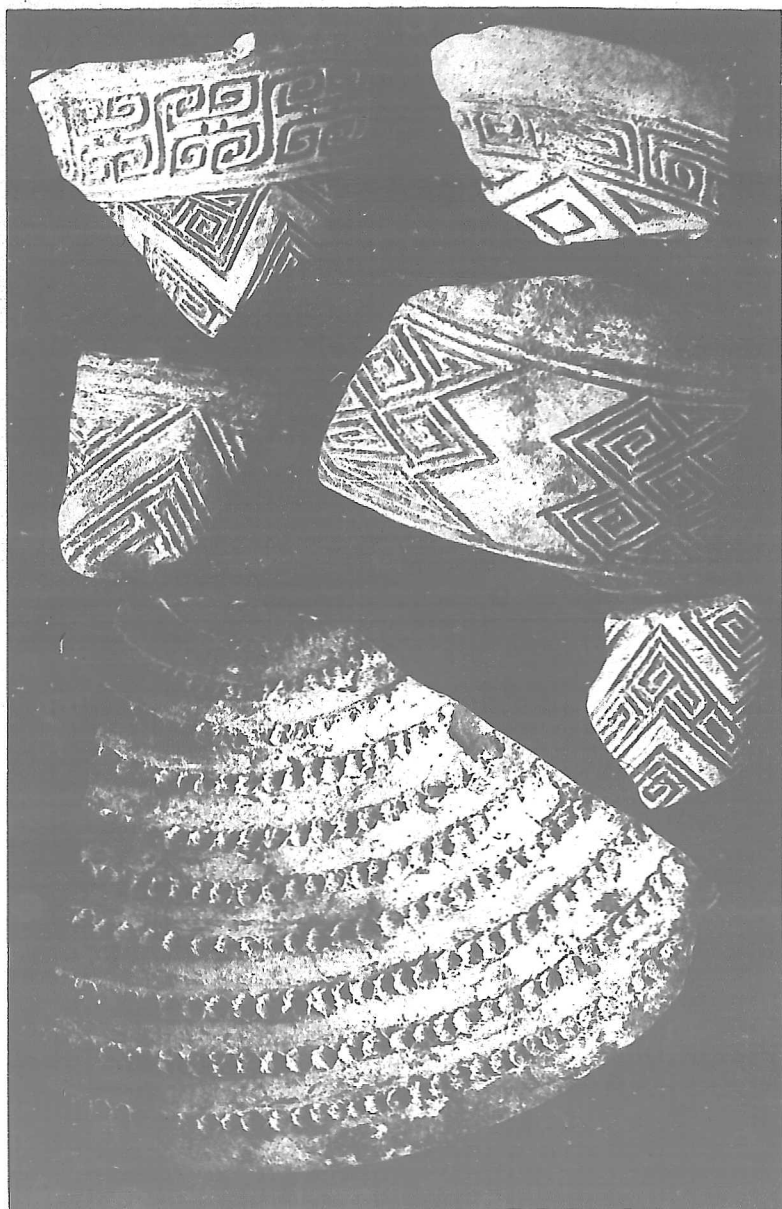
XXXVI

第三六



XXXVII

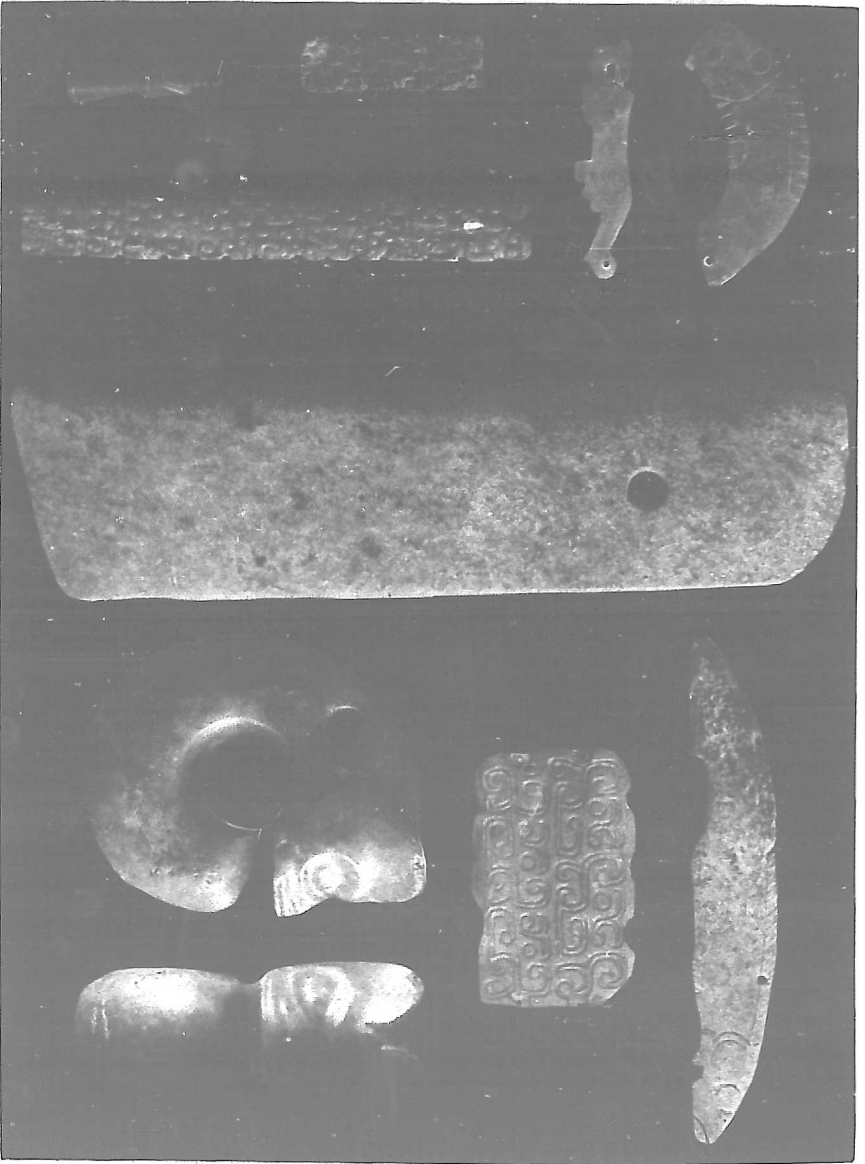
第三七



XXXVIII

第三八





1

2

3

4

5

6

7

8

9

3/6

XL  
第四〇





X L I

第  
四  
一



XLII

第  
四  
二



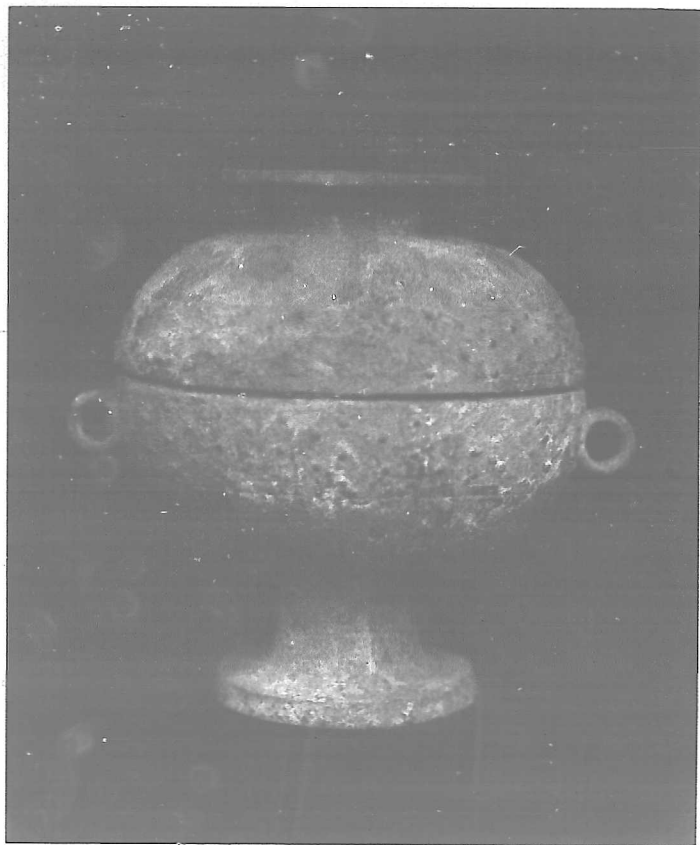
XLIII

第  
四  
三



XLIV

第  
四  
四

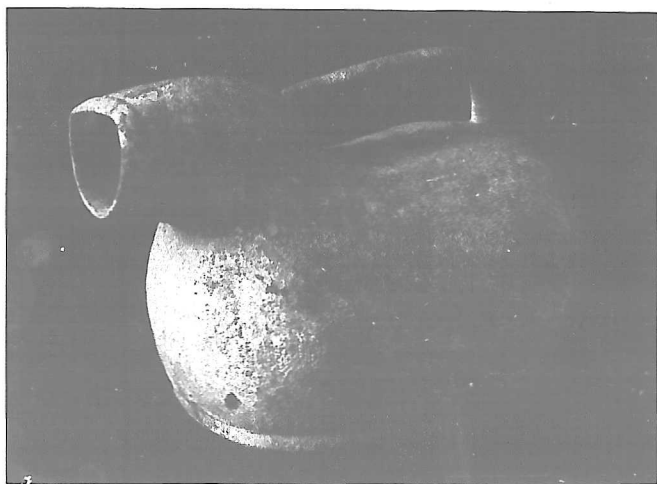


XLV

第  
四  
五



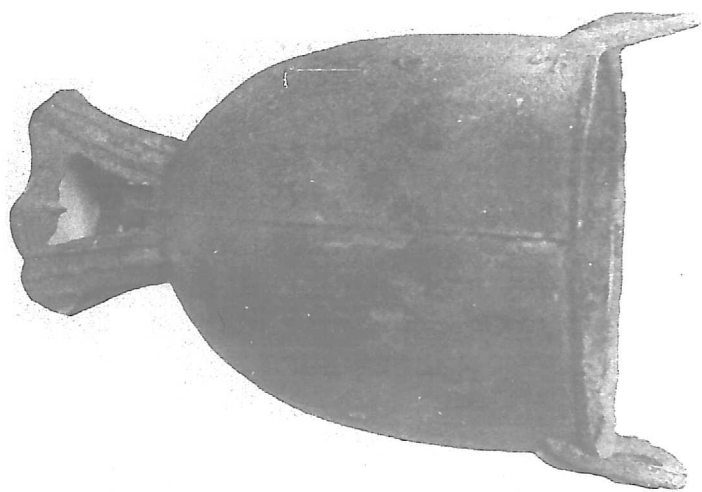
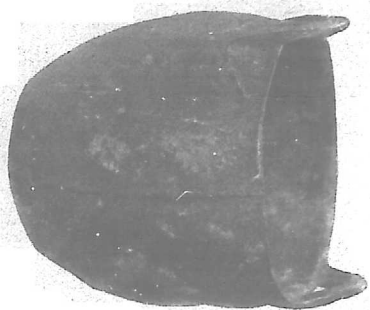
½



½

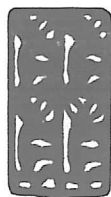
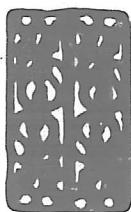
XLVI

第  
四  
六



XLVII

第  
四  
七



XLVIII

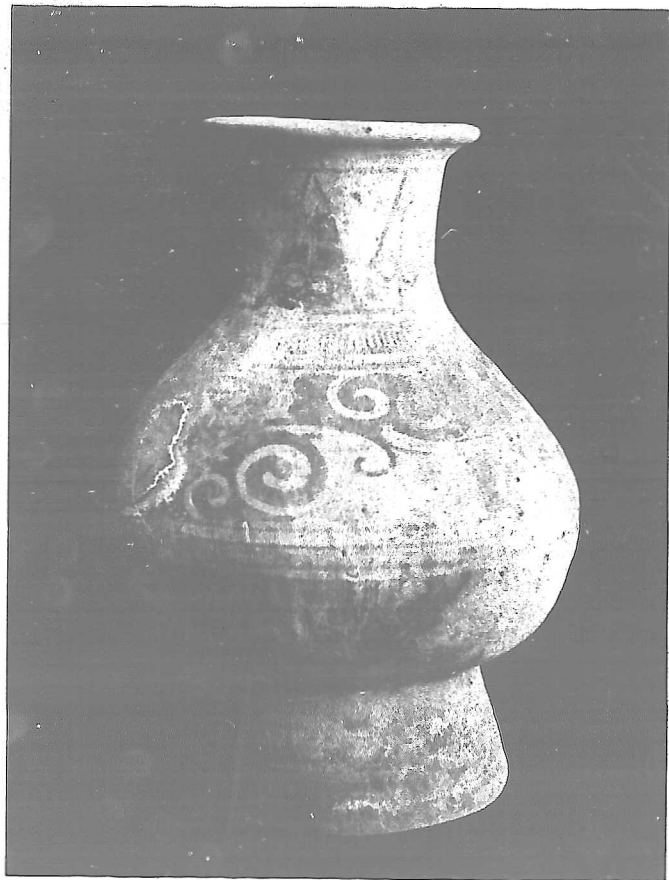
第  
四  
八





XLIX

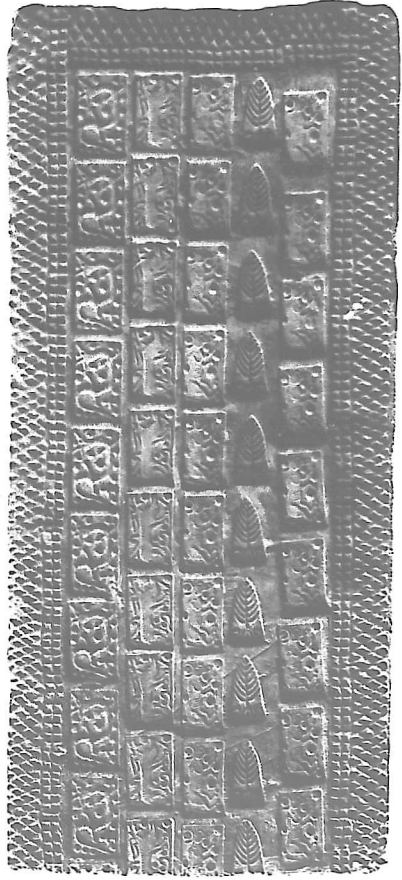
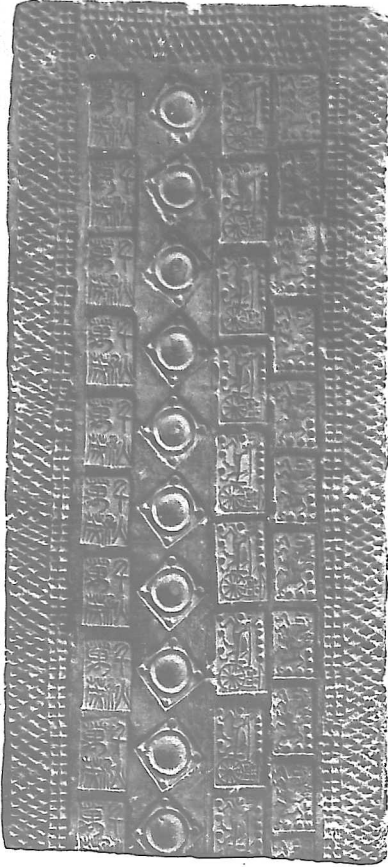
第  
四  
九



1/2

L

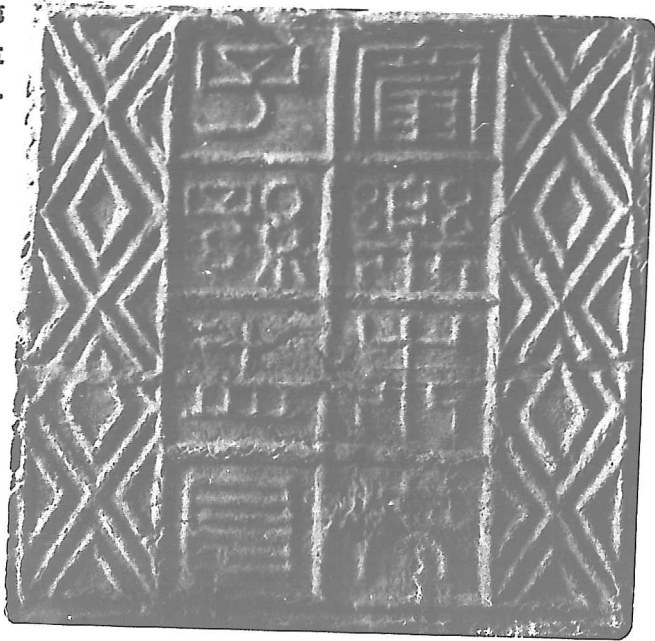
第五〇



1/6

LI

第  
五  
一



1/2

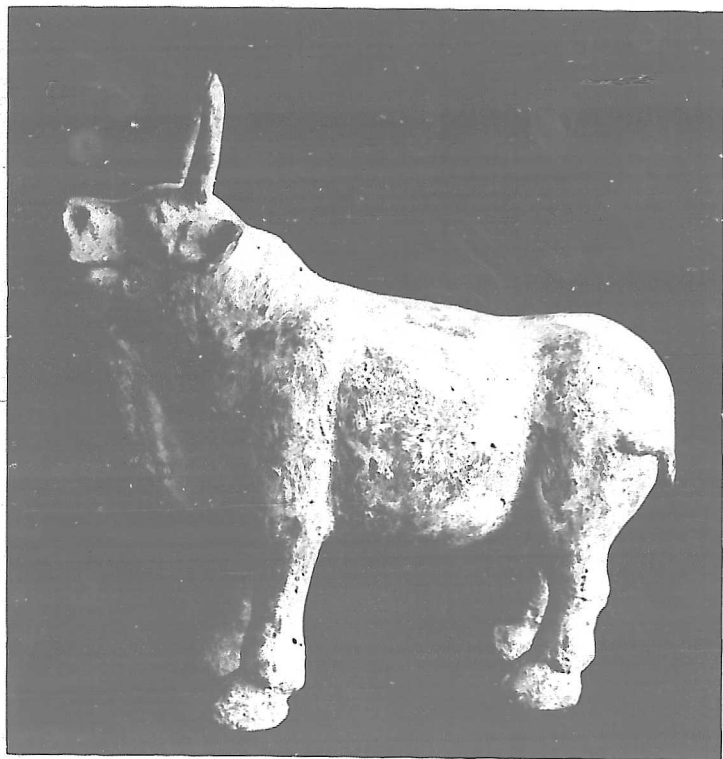
LII

第五二



LIII

第  
五  
三



LIV

第五  
回



L V

第  
五  
五



LVI

第五六





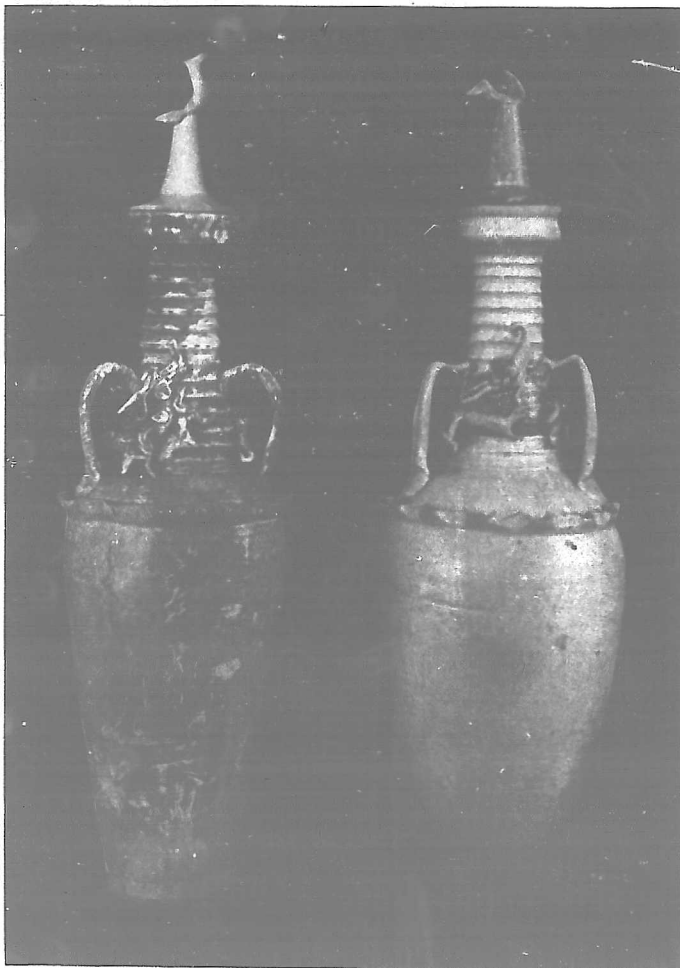
LVII

第五七



LVIII

第五八





1

2

¼

L X

第六〇



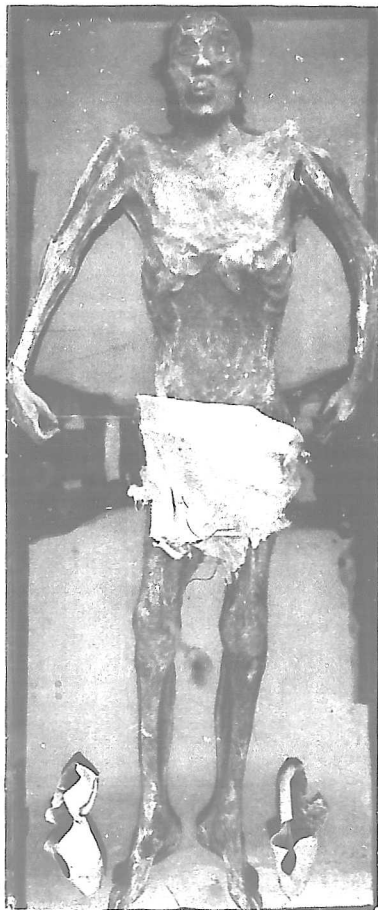
1



2

LXI

第六一



LXII

第六二

延和九年庚午歲  
 月十一日郭除康門  
 子弟將還壁中  
 郭將退贈壁中  
 章刻孝高之墓

1

之	郭	十	成	之
墓	恩	五	九	是
末	子	日	十	
	妻	丙	相	
		午		

2

1/3

延昌四六甲申歲  
 三月己未朔十七日  
 武死肅牙將軍後選  
 明威將軍選選齊餘

1

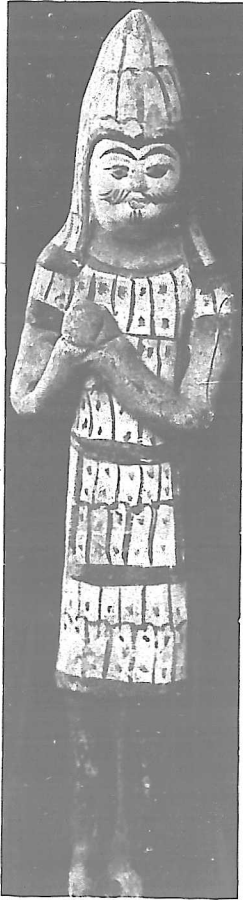
一壽十  
 甲午五卜  
 九日辰十新  
 兵將選兵部  
 侯慶伯春

2

3

LXIV

第  
六  
四



2



1

½



LXV

第六五



2



1

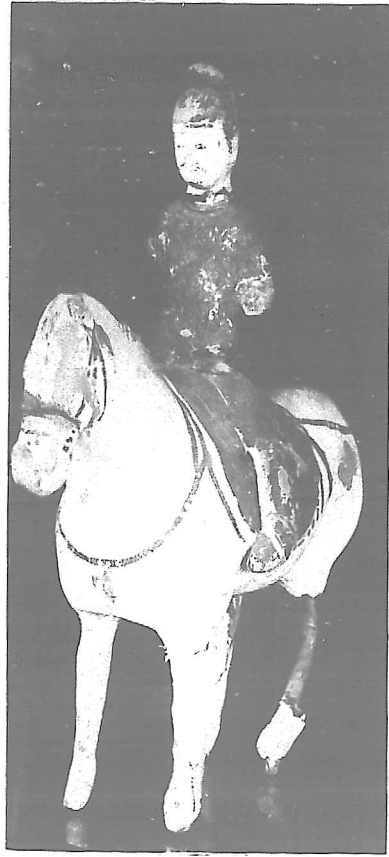
½

LXVI

第  
六  
六



2



1

½

LXVII

第  
六  
七



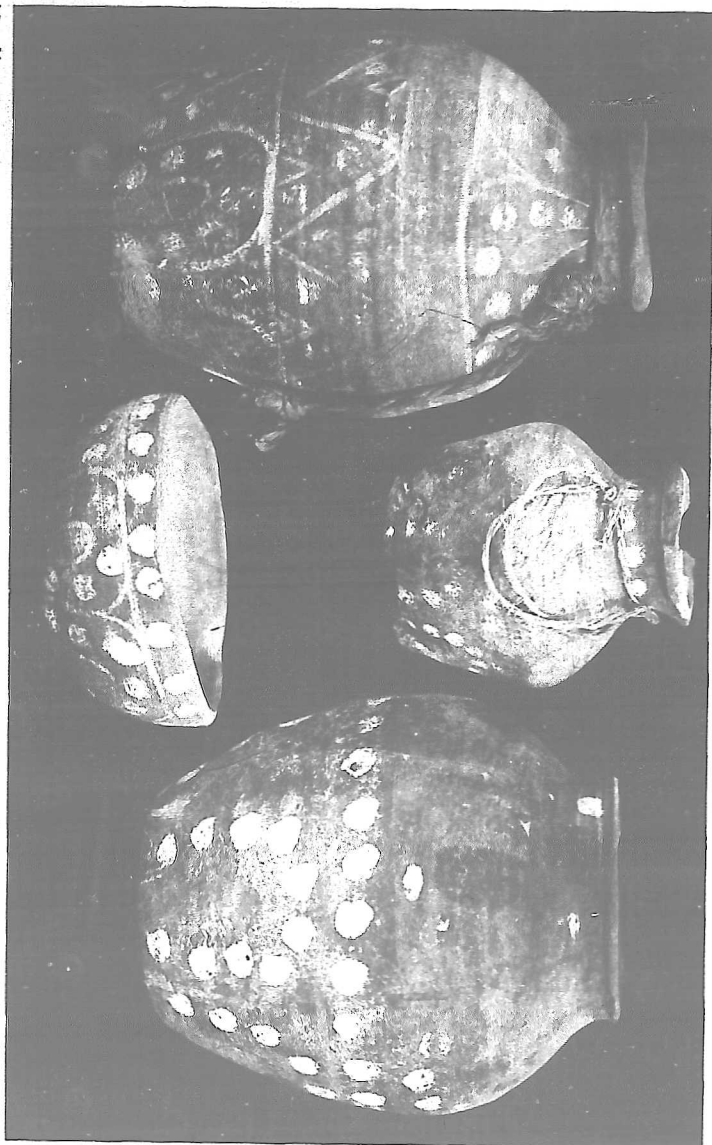
1/3

2

1



1/4



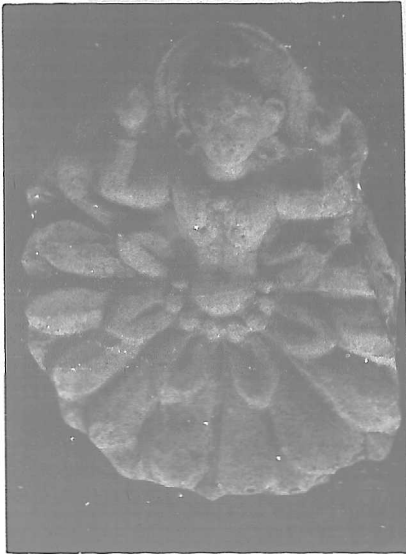
LXIX

第  
六  
九



LXX

第七〇





LXXII

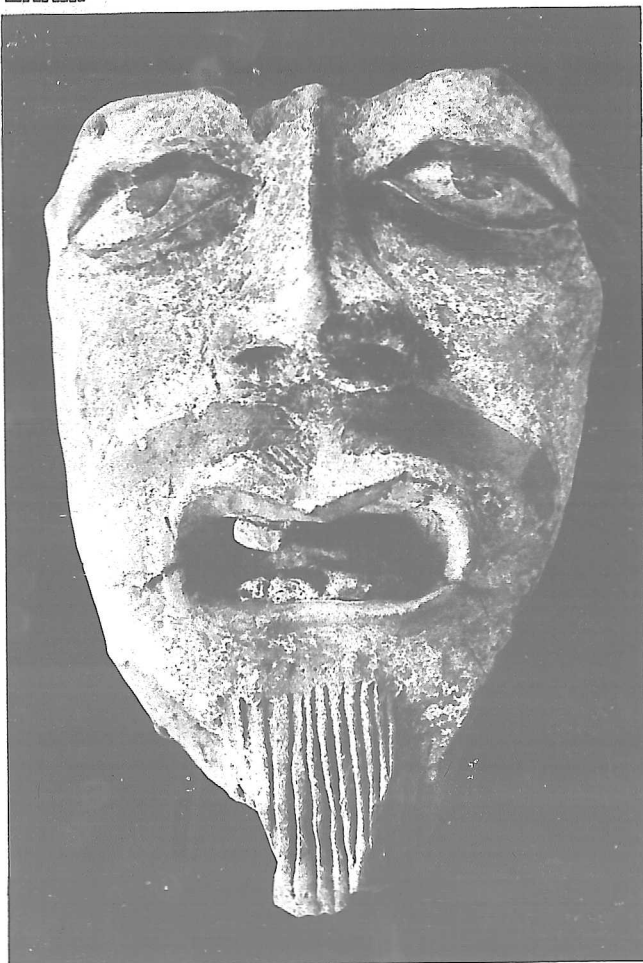
第七二

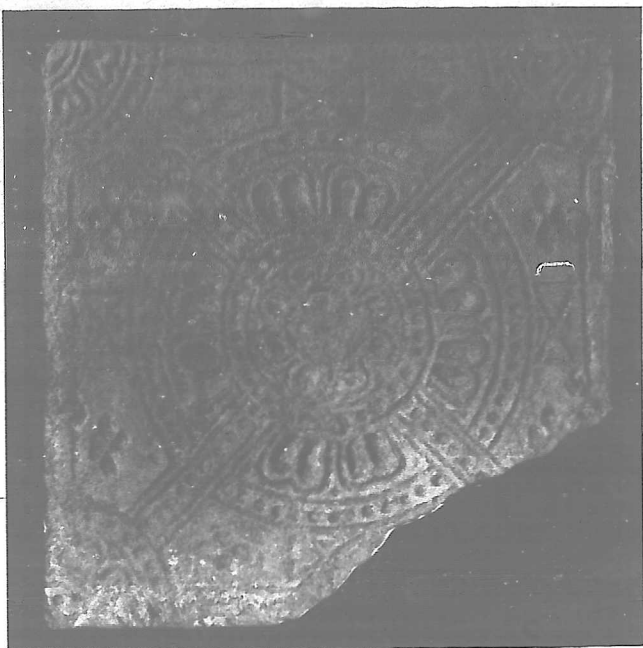




LXXIII

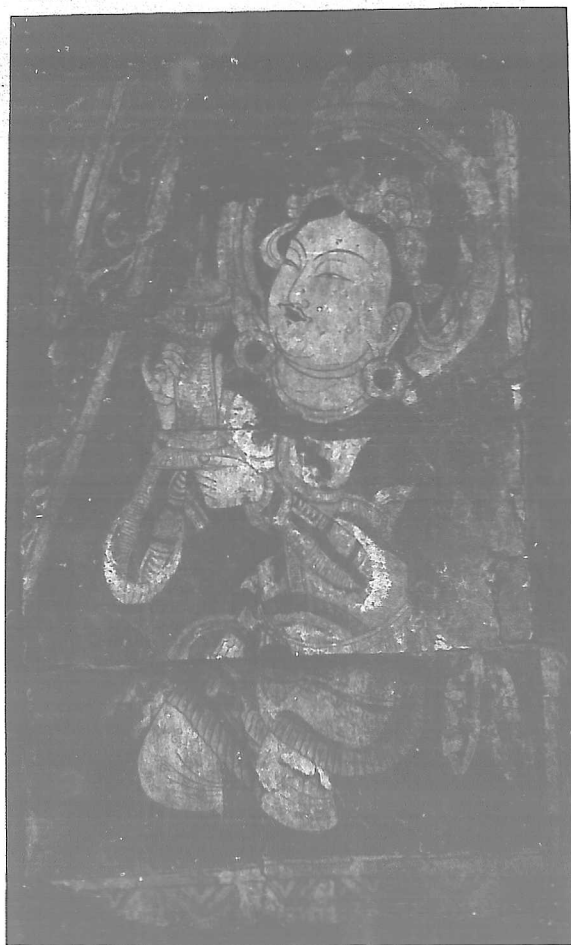
第七三





LXXV

第七五



LXXVI

第七六



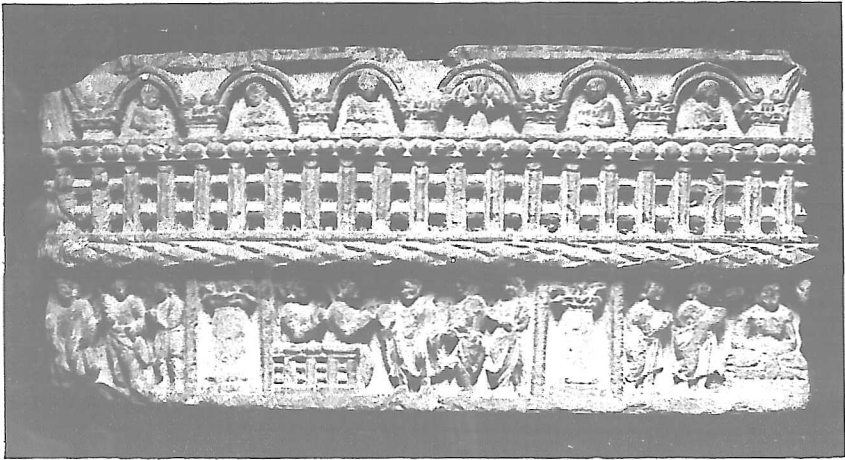
¼



¼



1



2

LXXVIII

第七八



LXXIX

第七九



LXXX

第  
八  
〇





- (2) Clay figurine of a woman on horse-back, from Karakhodja.
- LXVIII** Painted wooden potteries, from Toyuk (吐峪溝).
- LXIX** Clay pots, from Toyuk (吐峪溝).
- LXX** Clay Hanging-Buddhas, from Toyuk.
- LXXI** Small terra-cotta figurines, from Kuntura (庫木吐喇).
- LXXII** Clay Head of a Buddha, from Kuntura.
- LXXIII** Clay Head of a Buddha, from Murtuk (木頭溝).
- LXXIV** Tomb-brick, from Turfan.
- LXXV** Fresco painting from Murtuk, T'ang to Sung Dynasty.

## PART V. OBJECTS FOUND IN INDIA.

- LXXVI** Chlorite-Schist relief of a Buddha from Gandhara, (健駝羅) India.
- LXXVII** (1) Chlorite-Schist relief of a Worshipper, from Gandhara.
- (2) Chlorine-Schist relief of a Buddha, from Gandhara.
- LXXVIII** Chlorite-Schist Reliefs, from Gandhara.
- LXXIX** Chlorite-Schist Head of a Buddha, from Gandhara.
- LXXX** Diorite Statue of Sakya-muni from Bodhi-Gaya, India.

- LXII** (1) Inscription of the epitaph-brick, dated the 9th year of Yen-ho (延和) (A. D. 610), found in the tomb of the T'ang Dynasty, at Karakhoja (喀喇和卓), China.
- (2) Inscription of the epitaph-brick, dated the 20th year of Yen-chang (延昌) (A. D. 580), found in the tomb of the T'ang Dynasty, at Karakhoja.
- LXIII** (1) Inscription of the epitaph-brick, dated the 4th year of Yen-chang (延昌) (A. D. 564), found in the tomb of the T'ang Dynasty, at Karakhoja.
- (2) Inscription of the epitaph-brick, dated the 11th year of Yen-shou (延壽) (A. D. 634), from Karakhoja.
- LXIV** (1) Clay figurine of a Man on horse-back of the T'ang Dynasty, from Karakhoja.
- (2) Clay figurine of a standing Man in Armour of the T'ang Dynasty, from Karakhoja.
- LXV** Wooden figurine of a standing Man in Armour, from a tomb at Karakhoja.
- LXVI** (1) Clay figurine of a Man on horse-back, from Karakhoja.
- (2) Clay figurine of a standing Man from Karakhoja.
- LXVII** (1) Female Clay figurine from a tomb at Turfan.

- LIII** Terra-cotta model of a Bull of the T'ang Dynasty.
- LIV** Huge gilt bronze statue of Buddha from Shên-hsi-shêng (陝西省).
- LV** Stone sculpture of Buddhas of the T'ang Dynasty.
- LVI** Stone sculpture of the three Buddhas, dated the second year of Wu-p'ing (武平), Six Dynasty.
- LVII** Wooden statue of Bodhisattva, from Shan-hsi-hseng, China.
- LVIII** White-glazed long necked vase with relief ornaments.
- LIX** (1) Earthenware in the so-called Yegorai (繪高麗) type, Sung Dynasty.  
(2) Earthenware head-rest, Sung Dynasty.
- LX** (1) Coloured bowl, Wan-li (萬曆) Era, Ming Dynasty.  
(2) Coloured bowl, K'ang-hsi (康熙) Era, Ch'ing Dynasty.

#### **PART IV. OBJECTS FOUND IN CENTRAL ASIA.**

- LXI** (1) Mummy of a civil officer from the T'ang tomb at Turfan (吐魯番), Hsin-kiang, (新疆), in China.  
(2) Mummy of a military officer from the T'ang tomb at Turfan, China.

- XXXVIII** Semi-circular Tiles of the Pre-Han period from I-chou (易州), Chihli (直隸), in China.
- XXXIX** (1-8) Jade scepter, Pendants, Human form, etc.,  
(9) Jade ring with head.
- XL** Bronze mirror in the so-called Ch'in Style.
- XLI** Bronze mirror, Chin Style.
- XLII** Bronze mirror of the Han Dynasty.
- XLIII** Yen-shaped (甌形) bronze vase of the Chou Dynasty.
- XLIV** Tou-shaped (豆形) bronze vase of the Han Dynasty.
- XLV** (1) Bronze model Kitchen-stove.  
(2) I-shaped (甌形) bronze vase.
- XLVI** Bronze vase in the so-called Sui-yuan Style (綏遠式).
- XLVII** Small bronze pendants, from Northern Territory of China.
- XLVIII** Terra-cotta model of a horse, of the Han Dynasty.
- XLIX** Painted pot of the Han Dynasty, in China.
- L** Huge tomb-brick from the Province of Honan, China.
- LI** Tomb-brick with relief inscription found in China.

**(B) Six Dynasties and the later periods.**

- LII** Stone Head of Buddha from the Province of Honan, Western Wei Dynasty.

### (C) Liao Period.

- XXXI** Gilt bronze Funeral Mask from the ruins of a Corean castle (高麗城址), in Kirin (吉林).

## PART II. OBJECTS FOUND IN MONGOLIA.

- XXXII** (1) 6-Headed stone axe found at Hsiao-ku-lun (小庫倫), in Mongolia.  
(2) Perforated stone axe found at Hsiao-ku-lun.
- XXXIII** Stone axes found at Talamingan (達拉民安), in Mongolia.
- XXXIV** Li-shaped (鬲形) vase found at Hsiao-ku-lun, in Mongolia.
- XXXV** (1) Polished red pottery with four handles, at Hsiao-ku-lun, Mongolia.  
(1) Li-shaped vase from Mongolia.

## PART III. OBJECTS FOUND IN CHINA.

### (A) Han and Pre-Han period.

- XXXVI** Painted pottery vases from Kansu (甘肅), China.
- XXXVII** White pottery with incised ornaments found in the site of the Ancient Capital of the Yin Dynasty at An-yang (安陽), Honan (河南), in China.

- XXI** (1) Model kitchen-stove from a tomb at Ying-k'ao (營口).  
(2) Clay model kitchen-stove from a tomb at Nan-san-li (南山裡).
- XXII** (1) Animal shaped pottery from No. 2 Tomb at Ying-ch'êng-tzu (營城子), Port Arthur.  
(2) Clay model box from No. 2 Tomb, at Ying-ch'êng-tzu (營城子), Port Arthur.
- XXIII** Clay model house and kitchen-stove found from a tomb at Ying-ch'êng-tzu (營城子), near Port Arthur.
- XXIV** Painted clay candle stick from No. 2 Tomb at Ying-ch'êng-tzu, near Port Arthur.
- XXV** Painted clay model house found from a tomb at Ying-ch'êng-tzu, Port Arthur.
- XXVI** Clay candle stick found in a Tomb at Ying-ch'êng-tzu.
- XXVII** (1) Clay model dog from No. 1 Tomb at Ying-ch'êng-tzu.  
(2) Clay model pig found in No. 1 Tomb at Ying-ch'êng-tzu.
- XXVIII** Terra-cotta Mortuary Figurines from a tomb at Hsiung-yüeh-ch'êng (熊岳城), South Manchuria.
- XXIX** Terra-cotta Mortuary Figurines from a tomb at Lu-chia-tun (蘆家屯), South Manchuria.
- XXX** Stone-chambered tomb from an ancient tumulus at Liao-yang (遼陽), South Manchuria.

- IX** Jar-coffin found at Mu-yang-ch'èng (牧羊城), Port Arthur.
- X** Bronze Daggers found near Port Arthur.
- XI** Ancient coins (Ming knife-money(明刀錢), Spade-money (布 錢), I-tao coin (一刀錢)) found in South Manchuria.

**(B) Han Dynasty.**

- XII** Pottery with square design, found at Nan-san-li (南山裡), near Port Arthur.
- XIII** Semi-circular tiles found at Mu-yang-Castle (牧羊城), near Port Arthur.
- XIV** Tomb bricks found in South Manchuria.
- XV** Bronze objects excavated from a Han tomb at Nan-san-li (南山裡), Port Arthur.
- XVI** Bronze mirrors found in South Manchuria.
- XVII** Bronze objects found at Nan-san-li (南山裡), Port Arthur.
- XVIII** Pottery with rings from animal heads, excavated from a Han tomb at Nan-san-li (南山裡), Port Arthur.
- XIX** Earthen censer (Po-shan-lu 博山爐) excavated from a Han tomb at Nan-san-li.
- XX** (1) Flat-bottle from a Han tomb at Nan-san-li.  
(2) Painted cauldron of bowl shape with two upright handles and three feet, found near Hai-ch'èng (海 城), South Manchuria.

## PATR I. OBJECTS FOUND IN MANCHURIA.

### (A) Prehistoric and Pre-Han periods.

- I Stone Arrow-heads and Bone objects found at Nan-san-li (南山裡), near Port Arthur (旅順).
- II (1) (2) Stone axe found at Fu-shun (撫順).  
(4) (5) Stone knife found at Hamacho, (濱町), Dairen (大連).  
(6) Stone knife found at Daitai-san, (大臺山), near Port Arthur.  
(7) (8) Stone axe found at T'ieh-lung (鐵嶺).
- III Stone implements found at Hamacho, Dairen.
- IV (1) Perforated flat axe, stone arrow-heads at Tan-to-tzu (單砣子), Pi-tzu-wo (貔子窩).  
(2) Fragments of the Li-shaped vases found at Kao-li-chai (高麗寨), Pi-tzu-wo (貔子窩).
- V Painted potteries founds at Tan-to-tzu (單砣子), Pi-tzu-wo.
- VI Yen-shaped (罽形) vase found at Kao-li-chai (高麗寨), Pi-tzu-wo.
- VII Pottery vases found near Port Arthur.
- VIII Bronze Dagger-hilt found at Kuan-tun-tzu (官屯子), Mu-yang-ch'êng (牧羊城), near Port Arthur.



For the constant increase of the objects in the Museum owe much to many persons, above all, to Count Kozui Otani who has dedicated the remains collected in Central Asia and in India, and several other objects in Manchuria and Mongolia were through the favours of the South Manchuria Railway Co.

We hope you that you will have a general view of our Museum.

TATSUTA KUSAKA

In the director bureau of  
Home Affairs.

## PREFACE



The Kwantung Government Museum was built in the 7th year of Taisho (大正). After the reform of the Government General Regulation it exists here under the name of the Kwantung Government.

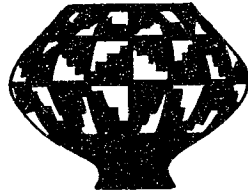
This building was began to be erected for the General Officers Assembly at the time of the Russian Imperial Government, but it remained unfinished.

In the 5th year of Taisho (大正) the work was taken up again by help of capitals of about ¥300,000, and was fully completed after two years. This Museum has lately the most important situation in the Far-eastern archaeological Society (東亞考古會學), since then we have excavated ruins of the pre-historic and historic ages at Pi-tzu-wo (貔子窩), a site of the stone age, in the second year of Showa (昭和) Mu-yang-cheng (牧羊城), a castle of the Han Dynasty in the third year of Showa (昭和), and Nan-san-li (南山裡), Han Tombs, in the forth year of Showa (昭和) in the Kwantung districts.

These contributions were widely known in archaeological circles. Furthermore a tomb of the Han Dynasty at Yin-cheng-tzu (營城子), may be said to attribute to our knowledge of Old Chinese Archaeology.



SELECT SPECIMENS  
OF THE  
ARCHAEOLOGICAL COLLECTION  
IN THE  
KWANTUNG GOVERNMENT MUSEUM



PORT ARTHUR (RYOJUN)

1933

1952六月貳頁1  
贈 潘 敬 齋

昭和八年十月十日印刷  
昭和八年十月十五日發行

關東應博物館

大連市東公園町三十一番地

印刷人 吾妻力松

大連市東公園町三十一番地

印刷所 滿洲日報社印刷所

