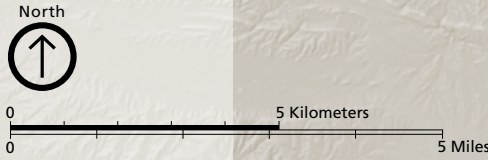


# DINOSAUR NATIONAL MONUMENT

Dinosaur fossils can be seen only at the Quarry Exhibit Hall area. No camping allowed on Harpers Corner Road.

Harpers Corner Road closed to cars at Plug Hat Butte during winter.



- |  |  |  |  |
|--|--|--|--|
|  |  |  |  |
|  |  |  |  |
|  |  |  |  |
| <b>Many unpaved roads are impassable when wet. Check conditions.</b> |  |  |  |

**Canyon Visitor Center**  
Open seasonally  
Monument Headquarters

**Quarry Exhibit Hall**  
Dinosaur Fossils  
Restricted access road SHUTTLES ONLY

**Quarry Visitor Center**  
Parking and SHUTTLE PICKUP

**Split Mountain**  
River Trail

Colorado Welcome Center

**Canyon Visitor Center**  
Open seasonally  
Monument Headquarters

**Deerlodge Park**

**Canyon Visitor Center**  
Open seasonally  
Monument Headquarters