

## Historic, archived document

Do not assume content reflects current scientific knowledge, policies, or practices.



Reserve

1.9  
Ec 714

U.S. DEPT. OF AGRICULTURE  
NAT'L AGRIC. LIBRARY  
RECEIVED

DEC 29 '73

PROCUREMENT SECTION  
CURRENT SERIAL RECORDS

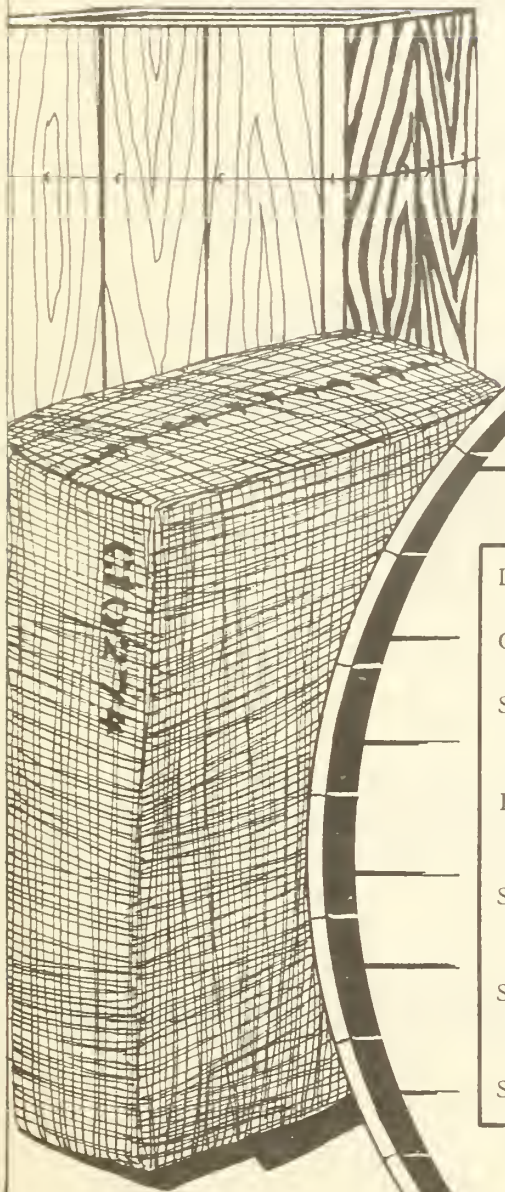
# TOBACCO STOCKS

OCTOBER 1, 1972

U. S. DEPT. OF AGRICULTURE  
NATIONAL AGRICULTURAL LIBRARY  
RECEIVED

DEC 7 1972

PROCUREMENT SECTION  
CURRENT SERIAL RECORDS



## CONTENTS

|   |      |
|---|------|
| Discussion .....  | 3- 5 |
| Conversion factors for adjusting for losses in weight .....   | 6    |
| Stocks of leaf tobacco, by types, converted to a<br>FARM-SALES-WEIGHT equivalent .....                      | 7    |
| Production, stocks, supply, disappearance, and price of<br>specified types (FARM-SALES-WEIGHT) .....        | 8-11 |
| Summary of tobacco leaf represented in inventories of<br>tobacco sheet .....                                | 12   |
| Stocks of leaf tobacco, by types, showing separately<br>quantities owned by dealers and manufacturers ..... | 13   |
| Stocks of leaf tobacco, summary by types .....  | 14   |

## BRIEF CLASSIFICATION OF LEAF TOBACCO

(Covering classes and types)

### CLASS 1, FLUE-CURED TYPES

- Type 11: Old Belt flue-cured; produced principally in the Piedmont sections of Virginia and North Carolina.
- Type 12: Eastern North Carolina flue-cured; produced principally in the coastal sections of North Carolina, north of the South River.
- Type 13: South Carolina flue-cured; produced principally in the coastal sections of South Carolina, the southeastern counties of North Carolina, south of the South River.
- Type 14: Georgia and Florida flue-cured; produced principally in southern Georgia and northern Florida.

### CLASS 2, FIRE-CURED TYPES

- Type 21: Virginia fire-cured; produced in the Piedmont and mountain sections of Virginia.
- Type 22: Tennessee-Kentucky fire-cured, eastern district, Clarksville, Springfield, and Hopkinsville; produced principally in a section east of the Tennessee River, in southern Kentucky and northern Tennessee.
- Type 23: Kentucky-Tennessee fire-cured, western district, Mayfield, and Murray; produced principally in a section between the Tennessee, Ohio, and Mississippi rivers in western Kentucky and northwestern Tennessee.

### CLASS 3, AIR-CURED TYPES

#### LIGHT AIR-CURED (CLASS 3a)

- Type 31: Burley; produced principally in Kentucky, Tennessee, Ohio, Indiana, West Virginia, Virginia, North Carolina, and Missouri.
- Type 32: Southern Maryland; produced principally in five counties of southern Maryland--Prince Georges, Anne Arundel, Calvert, Charles, and St. Marys.

#### DARK AIR-CURED (CLASS 3b)

- Type 35: One Sucker; produced in north-central Tennessee and south-central Kentucky.
- Type 36: Green River; produced in the northern part of Kentucky in the territory adjacent to Owensboro and Henderson.
- Type 37: Virginia sun-cured; produced principally in central Virginia, north of the James River.

### CLASS 4, CIGAR-FILLER TYPES

- Type 41: Pennsylvania Seedleaf; produced principally in Lancaster County, Pa., and the adjoining counties.
- Type 42-44: Ohio filler; produced principally in the Miami Valley section of Ohio and extending into Indiana.
- Type 46: Puerto Rican sun-grown, including primed (Deshojado) and stalk-cut (Mata); produced on the Island of Puerto Rico

### CLASS 5, CIGAR-BINDER TYPES

- Type 51: Connecticut Broadleaf; produced in the Connecticut Valley sections of Connecticut and Massachusetts.
- Type 52: Connecticut Havana Seed; produced in the Connecticut and Housatonic Valley sections of Connecticut and Massachusetts.
- Type 53: New York and Pennsylvania Havana Seed; produced in the Big Flats and Onondaga sections of New York, and extending into Pennsylvania.
- Type 54: Southern Wisconsin; produced in Wisconsin, south and east of the Wisconsin River.
- Type 55: Northern Wisconsin; produced in Wisconsin, north and west of the Wisconsin River, and in eastern Minnesota.

### CLASS 6, CIGAR-WRAPPER TYPES

- Type 61: Connecticut Shade; produced in the Connecticut Valley sections of Connecticut and Massachusetts.
- Type 62: Georgia and Florida Shade; produced in southwestern Georgia and north-central Florida.

### MISCELLANEOUS TYPES OF DOMESTIC TOBACCO

- Type 72: Louisiana Perique.
- Type 73: All domestic types of tobacco not otherwise classified.

### FOREIGN TYPES

- Type 81: Cuba
- Type 82: Indonesia
- Type 83: Philippine Islands
- Type 84: Brazil
- Type 85: Colombia
- Type 86: Dominican Republic
- Type 87: Paraguay
- Type 88: Mexico
- Type 89: Other foreign-grown cigar leaf
- Type 91: Foreign-grown Oriental and Aromatic
- Type 92: Foreign-grown flue-cured
- Type 93: Foreign-grown burley

-----

STOCKS OF LEAF TOBACCO OWNED BY DEALERS AND MANUFACTURERS 1/ 2/

Total stocks of leaf tobacco lower than a year ago.

Leaf tobacco inventories of dealers and manufacturers in the United States and Puerto Rico totaled 4,405 million pounds as of October 1, 1972. This was a decline of 69 million pounds from the 1971 October level. Growers marketed around 758 million pounds during the third quarter, mostly flue-cured.

The marketing year for all kinds of tobacco, except flue-cured and cigar wrapper, is on an October-September basis. The indicated total combined disappearance (exports plus domestic consumption) for all U. S. types during the 1971-72 marketing year was 1,895 million pounds compared with 1,929 million the previous year. Domestic manufacturers used approximately 312.3 million pounds of imported tobacco during the past fiscal year--214.7 million pounds of cigarette leaf and 97.6 million of cigar. Exports of U. S. leaf during the 1971-72 marketing year totaled 571 million pounds compared with 639 million in 1970-71.

Stocks as of October 1, 1972 included 874.6 million pounds of leaf tobacco under Government loans. These loan stocks were divided as follows:

|                |       |         |        |
|----------------|-------|---------|--------|
| flue-cured     | 530.5 | million | pounds |
| burley         | 327.6 | "       | "      |
| fire-cured     | 1.6   | "       | "      |
| dark air-cured | 12.7  | "       | "      |
| cigar leaf     | 2.1   | "       | "      |

Of these totals, an estimated 130 million pounds of flue-cured and 72 million pounds of burley were already contracted to manufacturers and dealers.

---

1/ Figures quoted for type totals in this summary are the farm-sales-weight equivalent of reported stocks. (See tables in body of report for reported weight basis). This report is issued quarterly.

2/ All Government loan stocks are reported by Grower Cooperatives, which are considered dealers for stock-reporting purposes.

Burley stocks lower; Flue-cured, Maryland, imported cigarette and smoking leaf increase.

Flue-cured stocks on October 1, 1972 at 2,340 million pounds were 28 million above the level of a year ago. Marketing of the 1972 crop, currently estimated at 1,011 million pounds, began in July and by the end of September 740 million pounds had been sold.

Burley stocks were 1,248 million pounds this October 1 compared with 1,346 the year before. Total disappearance during the past marketing year amounted to 570 million pounds. Exports were 55 million pounds leaving a residual domestic consumption of 515 million.

Inventories of Maryland tobacco showed a small increase to 54.5 million pounds. Disappearance during the 1971-72 marketing year fell to 25.5 million pounds. With exports at 8.0 million pounds indicated domestic usage was 17.5 million pounds.

Imported cigarette and smoking tobacco leaf stocks registered a gain of 23 million pounds with an inventory of 390 million pounds. All of the three types were higher.

DARK TOBACCO STOCKS

Air-cured continues decline; fire-cured stocks larger.

Fire-cured tobacco stocks, reported at 64.5 million pounds were 2.3 million larger than a year ago. Stocks on October 1 were divided as follows: Virginia, 8.3 million; Eastern District Kentucky and Tennessee, 47.1 million; and Western District, 9.1 million pounds. Disappearance of fire-cured during the 1971-72 marketing year totaled 41.2 million pounds, a loss of 7.3 million pounds. Exports were off by 11.0 pounds.

Dark air-cured stocks on this October 1 were reported at 49.2 million pounds, a decline of 4 million pounds. Individual totals this quarter were: One Sucker, 29.4 million; Green River, 16.8 million; and Virginia sun-cured, 3.0 million pounds. Disappearance of dark air-cured tobacco during the 1971-72 marketing year was 20.6 million pounds, unchanged from last year.

## CIGAR-LEAF-STOCKS

Domestic cigar leaf stocks continue decline.

Foreign-grown leaf also lower.

Cigar-leaf stocks of all domestic types, including Puerto Rican, totaled 156.6 million pounds on October 1, 1972--20.5 million below the figure reported a year earlier. Stocks of foreign-grown leaf were 95.2 million pounds compared with 98.3 million last year.

Combined stocks of the cigar filler types at 89.9 million pounds were 19.9 million below last October 1. Declines occurred in all types with Pennsylvania and Puerto Rico showing the heaviest loss. Stocks by types this October 1 were: Pennsylvania Seedleaf, 70.2 million; Ohio filler, 7.0 million; and Puerto Rican filler, 12.6 million pounds. Total disappearance of the filler types during the past marketing year totaled 57.2 million pounds, a gain of 2.0 million.

Cigar binder stocks were 46.7 million pounds on October 1, 1972, a gain of 2.4 million pounds from the previous year. Connecticut Valley Broadleaf stocks this October 1 were 5.2 million pounds; Connecticut Valley Havana Seed, 2.3 million; Southern Wisconsin, 20.3 million; and Northern Wisconsin, 19.0 million pounds. Disappearance of the binder types totaled 23.1 million pounds, a gain of 4.0 million pounds.

Shade-grown leaf stocks were 20.1 million pounds, compared with 23.0 million a year ago. Connecticut Valley stocks were 12.2 million and those of Georgia-Florida, 8.8 million pounds.

Stocks of Cuban tobacco were reported at 0.5 million pounds. Holdings of Philippine Islands leaf were 37.7 million--down 2.2 million; Indonesia, 4.6 million; Brazil, 7.2 million; Columbia, 10.6 million; Dominican Republic, 10.4 million; Paraguay, 4.3 million; Mexico, 6.7 million; and other foreign-grown, 13.2 million pounds.

## TOBACCO SHEET

Leaf in sheet declining.

Stocks of leaf represented in inventories of "tobacco sheet" totaled 26.0 million pounds (reported weight) compared with 28.6 million a year earlier. Of the total in "sheet" this October 1, 24.4 million pounds were for use in cigarettes and smoking tobacco, and 1.7 million for cigar binder and wrapper.

TABLE 1.--Factors for adjusting stocks reported by dealers and manufacturers to a farm-sales-weight equivalent, by types of tobacco

AUCTION MARKET AREAS (Types 11-37) 1/

| Type name                                     | Type number | Factors to multiply by to convert - |                              |                              |                       |                      |                                    |
|---|-------------|-------------------------------------|------------------------------|------------------------------|-----------------------|----------------------|------------------------------------|
|   |             | Stemmed stocks to -                 |                              | Unstemmed stocks to -        |                       |                      |                                    |
|   |             | Unstemmed equivalent                | Farm-sales weight equivalent | Farm-sales-weight equivalent | From packed weight 1/ |                      |                                    |
| Flue-cured . . . . .                          | 11-14       | 1.295                               | 1.450                        |                              | 1.12                  |                      |                                    |
| Virginia fire-cured . . . . .                 | 21          | 1.299                               | 1.598                        |                              | 1.23                  |                      |                                    |
| Tennessee and Kentucky fire-cured . . . . .   | 22-23       | 1.324                               | 2/ 1.471                     |                              | 1.04                  |                      |                                    |
| Burley . . . . .                              | 31          | 1.345                               | 1.506                        |                              | 1.12                  |                      |                                    |
| Southern Maryland . . . . .                   | 32          | 1.373                               | 1.400                        |                              | 1.02                  |                      |                                    |
| One Sucker . . . . .                          | 35          | 1.413                               | 1.554                        |                              | 1.10                  |                      |                                    |
| Green River . . . . .                         | 36          | 1.389                               | 1.570                        |                              | 1.13                  |                      |                                    |
| Virginia sun-cured . . . . .                  | 37          | 1.326                               | 1.538                        |                              | 1.16                  |                      |                                    |
| Miscellaneous domestic . . . . .              | 72-73       | 1.333                               | 1.493                        |                              | 1.12                  |                      |                                    |
| DOMESTIC-GROWN CIGAR LEAF (Types 41-62)       |             |                                     |                              |                              |                       |                      |                                    |
|   |             |                                     | 2/                           | Sweated weight 3/            | Marked weight 3/      | Farm-sales-weight 3/ | Average for Oct. 1, 1972 report 3/ |
| Pennsylvania Seedleaf . . . . .               | 41          | 1.444                               | 1.718                        | 1.19                         | 1.05                  | 1.00                 | 1.02                               |
| Ohio . . . . .                                | 42-44       | 1.454                               | 1.730                        | 1.19                         | 1.05                  | 1.00                 | 1.14                               |
| Puerto Rican . . . . .                        | 46          | 1.314                               | 1.551                        | 1.18                         | 1.16                  | 1.00                 | (1.16 - U. S.<br>1.15 - P. R.)     |
| Connecticut Broadleaf . . . . .               | 51          | 1.375                               | 1.622                        | 1.18                         | 1.04                  | 1.00                 | 1.09                               |
| Connecticut Havana Seed . . . . .             | 52          | 1.386                               | 1.635                        | 1.18                         | 1.04                  | 1.00                 | 1.15                               |
| Southern Wisconsin . . . . .                  | 54          | 1.383                               | 1.687                        | 1.22                         | 1.06                  | 1.00                 | 1.02                               |
| Northern Wisconsin . . . . .                  | 55          | 1.404                               | 1.713                        | 1.22                         | 1.06                  | 1.00                 | 1.04                               |
| Connecticut Shade . . . . .                   | 61          | 1.245                               | 1.419                        | 1.14                         | 1.10                  | 1.00                 | 1.07                               |
| Georgia and Florida Shade . . . . .           | 62          | 1.235                               | 1.408                        | 1.14                         | 1.10                  | 1.00                 | 1.11                               |
| IMPORTED LEAF (Types 81-93)                   |             |                                     |                              |                              |                       |                      |                                    |
| Cigar leaf . . . . .                          | 81-89       | 1.400                               | 1.624                        |                              |                       | 1.16                 |                                    |
| Foreign-grown Oriental and Aromatic . . . . . | 91          | 1.333                               | 1.466                        |                              |                       | 1.10                 |                                    |
| Foreign-grown flue-cured . . . . .            | 92          | 1.295                               | 1.450                        |                              |                       | 1.12                 |                                    |
| Foreign-grown burley . . . . .                | 93          | 1.345                               | 1.506                        |                              |                       | 1.12                 |                                    |

1/ Types 11-37 are reported on the basis of packed weight.

2/ Farm-sales-weight equivalent based on unstemmed sweated weight factor.

3/ The instructions for reporting unstemmed cigar-leaf of the domestic types require that dealers and manufacturers indicate the weight basis on which the tobacco is reported, namely, farm-sales-weight, marked weight, or sweated weight. The stocks are converted to the farm-sales-weight equivalent on the basis of average factors reflecting the percentage reported each quarter in each of these three categories.



Table 2.--Stocks of leaf tobacco owned by dealers and manufacturers, by types, converted to a farm-sales-weight equivalent, October 1, 1972, compared with other quarters 1/

## FARM-SALES WEIGHT

| Type number   | J. S. type number | October 1, |           |           | July 1,   | April 1,  | January 1, |
|---|-------------------|------------|-----------|-----------|-----------|-----------|------------|
|   |                   | 1972       | 1971      | 1970      | 1972      | 1972      | 1972       |
|   |                   | 1,000 lb.  | 1,000 lb. | 1,000 lb. | 1,000 lb. | 1,000 lb. | 1,000 lb.  |
| Flue-cured  | 11-14             | 2,340,116  | 2,312,364 | 2,410,003 | 1,910,176 | 2,158,050 | 2,511,875  |
| Virginia fire-cured                                   | 21                | 8,266      | 8,959     | 9,797     | 10,257    | 11,676    | 10,408     |
| Tennessee and Kentucky, fire-cured (Eastern district) | 22                | 47,108     | 45,816    | 52,766    | 53,816    | 61,222    | 40,682     |
| Kentucky and Tennessee fire-cured (Western district)  | 23                | 9,107      | 7,438     | 11,076    | 9,368     | 9,930     | 6,666      |
| Total fire-cured                                      | 21-23             | 64,481     | 62,213    | 73,639    | 73,441    | 82,828    | 57,756     |
| Burley  | 31                | 1,248,469  | 1,345,830 | 1,342,703 | 1,390,121 | 1,534,301 | 1,564,907  |
| Southern Maryland                                     | 32                | 54,470     | 51,846    | 61,961    | 60,898    | 39,673    | 46,021     |
| Total light air-cured                                 | 31-32             | 1,302,939  | 1,397,676 | 1,404,664 | 1,451,019 | 1,573,974 | 1,610,928  |
| One Sucker  | 35                | 29,417     | 32,018    | 34,308    | 33,283    | 36,340    | 33,400     |
| Green River   | 36                | 16,772     | 17,816    | 19,383    | 17,691    | 18,455    | 17,368     |
| Virginia sun-cured                                    | 37                | 2,999      | 3,146     | 3,327     | 3,294     | 3,649     | 3,412      |
| Total dark air-cured                                  | 35-37             | 49,188     | 52,980    | 57,018    | 54,268    | 58,444    | 54,180     |
| Pennsylvania Seedleaf                                 | 41                | 70,179     | 86,998    | 97,266    | 79,117    | 88,729    | 79,193     |
| Ohio Filler (Miami Valley)                            | 42-44             | 7,035      | 7,838     | 9,020     | 8,278     | 9,396     | 7,228      |
| Puerto Rican:   |                   |            |           |           |           |           |            |
| in United States                                      | 46                | 3,475      | 4,789     | 5,389     | 3,809     | 4,112     | 4,475      |
| in Puerto Rico  | 46                | 9,196      | 10,195    | 13,894    | 11,059    | 7,432     | 6,830      |
| Total cigar filler                                    | 41-46             | 89,885     | 109,820   | 125,569   | 102,263   | 109,669   | 97,726     |
| Connecticut Valley Broadleaf                          | 51                | 5,152      | 4,385     | 4,312     | 5,587     | 5,926     | 5,263      |
| Connecticut Valley Havana Seed                        | 52                | 2,286      | 2,766     | 2,699     | 2,329     | 2,678     | 2,716      |
| Southern Wisconsin                                    | 54                | 20,256     | 18,756    | 16,685    | 22,495    | 24,845    | 17,713     |
| Northern Wisconsin                                    | 55                | 18,959     | 18,387    | 18,556    | 21,480    | 23,841    | 18,986     |
|   | 51-55             | 46,653     | 44,294    | 42,252    | 51,891    | 57,290    | 44,678     |
| Connecticut shade                                     | 61                | 12,175     | 14,170    | 15,124    | 13,168    | 13,992    | 14,160     |
| Georgia and Florida shade                             | 62                | 7,930      | 8,838     | 10,299    | 6,652     | 7,735     | 8,739      |
| Total cigar wrapper                                   | 61-62             | 20,105     | 23,008    | 25,423    | 19,820    | 21,727    | 22,899     |
| Perique   | 72                | 948        | 676       | 619       | 694       | 747       | 580        |
| Other miscellaneous domestic 2/                       | 73                | 5,303      | 5,669     | 6,167     | 5,465     | 4,617     | 5,325      |
| Total miscellaneous domestic                          | 72-73             | 6,251      | 6,345     | 6,786     | 6,159     | 5,364     | 5,905      |
| Cuba  | 81                | 486        | 633       | 914       | 503       | 539       | 540        |
| Indonesia   | 82                | 4,604      | 4,186     | 3,436     | 4,337     | 4,437     | 4,125      |
| Philippine Islands                                    | 83                | 37,677     | 39,888    | 38,919    | 33,923    | 32,430    | 31,623     |
| Brazil  | 84                | 7,200      | 9,503     | 9,154     | 8,019     | 6,306     | 7,279      |
| Colombia  | 85                | 10,553     | 8,245     | 10,102    | 11,120    | 6,771     | 6,373      |
| Dominican Republic                                    | 86                | 10,426     | 10,797    | 9,508     | 11,950    | 12,707    | 9,247      |
| Paraguay  | 87                | 4,339      | 6,723     | 8,912     | 4,112     | 5,451     | 5,628      |
| Mexico  | 88                | 6,713      | 6,272     | 5,944     | 6,007     | 6,139     | 5,701      |
| Other foreign-grown cigar leaf                        | 89                | 13,155     | 12,038    | 12,252    | 13,791    | 11,732    | 12,413     |
| Total imported cigar leaf                             | 81-89             | 95,153     | 98,285    | 99,141    | 93,762    | 86,512    | 82,929     |
| Foreign-grown Oriental and Aromatic                   | 91                | 360,000    | 346,708   | 3/        | 389,429   | 356,554   | 320,148    |
| Foreign-grown flue-cured                              | 92                | 19,495     | 14,640    | 3/        | 24,402    | 11,610    | 12,070     |
| Foreign-grown burley                                  | 93                | 10,504     | 5,992     | 3/        | 9,370     | 8,573     | 6,895      |
| Total imported cigarette and smoking tobacco leaf     | 91-93             | 389,999    | 367,340   | 405,829   | 423,201   | 376,737   | 339,113    |
| Total all types                                       | 11-93             | 4,404,770  | 4,474,325 | 4,650,324 | 4,186,000 | 4,530,595 | 4,827,989  |

1/ Totals include stocks of leaf tobacco sheet. See separate reporting in table 4.

2/ Type 73 is defined as all domestic tobacco not otherwise classified.

3/ In previous quarters these tobaccos were grouped together and designated type 90. The increasing volume of imported flue-cured and burley leaf made separate reporting necessary.

TABLE 3.--Production, stocks, supply, disappearance on a farm-aalea-weight basis, and price of apecified types, 1966-72

| Marketing year   | TOTAL ALL TYPES 11-62           |                   |                   |                   |                   |                   |                   |                   |         |                          |
|--|---------------------------------|-------------------|-------------------|-------------------|-------------------|-------------------|-------------------|-------------------|---------|--------------------------|
|  | Carryover stocks (October 1) 1/ |                   |                   |                   | Pro-duction       | Total supply      | Disappearance     |                   |         | Average price to growers |
|  | Manu-<br>facturera              | Under<br>loan     | Other             | Total             |                   |                   | Total             | Export            | Other   |                          |
| Million<br>pounds  | Million<br>pounds               | Million<br>pounds | Million<br>pounds | Million<br>pounds | Million<br>pounds | Million<br>pounds | Million<br>pounds | Million<br>pounds | Centa   |                          |
| 1966   | 2,789.9                         | 1,174.9           | 436.9             | 4,401.7           | 1,898.8           | 6,300.5           | 2,120.7           | 703.3             | 1,417.3 | 66.2                     |
| 1967   | 2,681.8                         | 1,043.5           | 454.5             | 4,179.8           | 1,965.4           | 6,145.2           | 2,036.2           | 647.6             | 1,388.6 | 67.1                     |
| 1968   | 2,561.4                         | 1,154.1           | 392.2             | 4,107.7           | 1,732.0           | 5,839.7           | 1,991.7           | 622.6             | 1,369.1 | 68.8                     |
| 1969   | 2,342.6                         | 1,172.9           | 332.5             | 3,848.0           | 1,810.2           | 5,658.2           | 1,961.1           | 640.2             | 1,320.9 | 71.7                     |
| 1970   | 2,137.3                         | 1,236.7           | 323.0             | 3,697.0           | 1,897.2           | 5,594.2           | 1,928.8           | 638.6             | 1,290.2 | 73.3                     |
| 1971   | 2,108.2                         | 1,250.0           | 307.2             | 3,665.4           | 1,712.4           | 5,377.8           | 1,894.7           | 571.0             | 1,323.7 | 78.5                     |
| 1972 3/  | 2,211.6                         | 961.9             | 309.6             | 3,483.1           | 1,737.1           | 4/5,220.2         |                   |                   |         |                          |
| FLUE-CURED, TYPES 11-14<br>(July-June Marketing Year)                            |                                 |                   |                   |                   |                   |                   |                   |                   |         |                          |
| 1966   | 1,349.2                         | 836.4             | 253.3             | 2,438.8           | 1,107.9           | 3,546.7           | 1,274.2           | 587.1             | 687.1   | 66.9                     |
| 1967   | 1,306.1                         | 685.4             | 281.0             | 2,272.5           | 2/1,250.0         | 3,522.5           | 1,221.0           | 533.3             | 687.7   | 64.9                     |
| 1968   | 1,257.5                         | 773.3             | 270.7             | 2,301.5           | 2/ 995.7          | 3,297.2           | 1,197.1           | 525.3             | 671.8   | 65.6                     |
| 1969   | 1,080.8                         | 800.5             | 218.8             | 2,100.1           | 1,052.8           | 3,152.9           | 1,180.5           | 534.6             | 645.9   | 72.4                     |
| 1970   | 1,013.8                         | 744.9             | 213.7             | 1,972.4           | 2/1,178.1         | 3,150.5           | 1,174.1           | 534.0             | 640.1   | 72.0                     |
| 1971   | 1,010.0                         | 761.9             | 204.5             | 1,976.4           | 1,076.3           | 3,052.8           | 1,142.6           | 480.0             | 662.6   | 77.2                     |
| 1972 3/  | 1,086.6                         | 617.8             | 205.8             | 1,910.2           | 1,010.8           | 4/2,921.0         |                   |                   |         |                          |
| VIRGINIA FIRE-CURED, TYPE 21<br>(October-September Marketing Year)               |                                 |                   |                   |                   |                   |                   |                   |                   |         |                          |
| 1966   | 8.4                             | 3.5               | 5.0               | 16.9              | 7.5               | 24.4              | 9.6               | 7.4               | 2.2     | 41.2                     |
| 1967   | 7.9                             | 2.7               | 4.2               | 14.8              | 7.0               | 21.8              | 10.1              | 6.7               | 3.4     | 40.9                     |
| 1968   | 6.5                             | 2.8               | 2.4               | 11.7              | 5.9               | 17.6              | 7.8               | 4.7               | 3.1     | 46.9                     |
| 1969   | 5.0                             | 1.9               | 3.0               | 9.9               | 6.7               | 16.6              | 6.8               | 5.1               | 1.7     | 53.1                     |
| 1970   | 4.8                             | 1.4               | 3.6               | 9.8               | 6.2               | 16.0              | 7.0               | 4.6               | 2.4     | 52.0                     |
| 1971   | 4.9                             | 1.0               | 3.1               | 9.0               | 5.9               | 14.9              | 6.6               | 3.5               | 3.1     | 54.8                     |
| 1972 3/  | 5.3                             | .4                | 2.6               | 8.3               | 5.3               | 4/ 13.6           |                   |                   |         |                          |
| TOTAL, TYPES 22-23<br>(October-September Marketing Year)                         |                                 |                   |                   |                   |                   |                   |                   |                   |         |                          |
| 1966   | 48.0                            | 25.9              | 21.9              | 95.8              | 40.2              | 136.0             | 44.7              | 23.7              | 21.0    | 42.2                     |
| 1967   | 42.0                            | 27.3              | 22.0              | 91.3              | 29.4              | 120.7             | 41.9              | 27.1              | 14.8    | 46.2                     |
| 1968   | 40.7                            | 21.4              | 16.7              | 78.8              | 32.6              | 111.4             | 38.7              | 19.6              | 19.1    | 51.1                     |
| 1969   | 42.7                            | 11.7              | 18.3              | 72.7              | 34.1              | 106.8             | 42.9              | 24.5              | 18.4    | 48.1                     |
| 1970   | 35.3                            | 9.7               | 18.9              | 63.9              | 30.9              | 94.8              | 41.5              | 28.3              | 13.2    | 54.4                     |
| 1971   | 34.6                            | 4.7               | 14.0              | 53.3              | 37.6              | 90.9              | 34.7              | 18.7              | 16.0    | 60.8                     |
| 1972 3/  | 37.7                            | 1.2               | 17.3              | 56.2              | 40.2              | 4/ 96.4           |                   |                   |         |                          |
| TENNESSEE AND KENTUCKY FIRE-CURED, TYPE 22<br>(October-September Marketing Year) |                                 |                   |                   |                   |                   |                   |                   |                   |         |                          |
| 1966   | 40.6                            | 17.7              | 16.0              | 74.3              | 29.8              | 104.1             | 32.7              |                   |         | 42.9                     |
| 1967   | 35.1                            | 19.8              | 16.5              | 71.4              | 23.0              | 94.4              | 31.2              |                   |         | 46.9                     |
| 1968   | 35.0                            | 15.4              | 12.8              | 63.2              | 25.3              | 88.5              | 5/ 29.6           |                   |         | 51.5                     |
| 1969   | 37.3                            | 7.6               | 14.0              | 58.9              | 25.8              | 84.7              | 32.0              |                   |         | 48.4                     |
| 1970   | 30.9                            | 6.9               | 15.0              | 52.8              | 24.4              | 77.2              | 31.3              |                   |         | 54.8                     |
| 1971   | 30.6                            | 4.0               | 11.2              | 45.8              | 29.9              | 75.7              | 28.6              |                   |         | 61.0                     |
| 1972 3/  | 32.2                            | 1.1               | 13.8              | 47.1              | 32.4              | 4/ 79.5           |                   |                   |         |                          |
| KENTUCKY AND TENNESSEE FIRE-CURED, TYPE 23<br>(October-September Marketing Year) |                                 |                   |                   |                   |                   |                   |                   |                   |         |                          |
| 1966   | 7.4                             | 8.2               | 5.9               | 21.5              | 10.4              | 31.9              | 12.0              |                   |         | 40.2                     |
| 1967   | 6.9                             | 7.5               | 5.5               | 19.9              | 6.4               | 26.3              | 10.7              |                   |         | 43.7                     |
| 1968   | 5.7                             | 6.0               | 3.9               | 15.6              | 7.3               | 22.9              | 9.1               |                   |         | 50.0                     |
| 1969   | 5.4                             | 4.1               | 4.3               | 13.8              | 8.2               | 22.0              | 10.9              |                   |         | 47.3                     |
| 1970   | 4.4                             | 2.8               | 3.9               | 11.1              | 6.5               | 17.6              | 10.2              |                   |         | 53.1                     |
| 1971   | 4.0                             | 0.7               | 2.8               | 7.5               | 7.7               | 15.2              | 6.1               |                   |         | 60.1                     |
| 1972 3/  | 5.5                             | .1                | 3.5               | 9.1               | 7.8               | 4/ 16.9           |                   |                   |         |                          |

See footnotes at end of table.

Continued--

TABLE 3.--Production, stocks, supply, disappearance on a farm-aales weight basis, and price of specified types, 1966-77

| BURLEY, TYPE 31<br>(October-September Marketing Year)             |  |                |                |                |                     |                |                |                |                |                          |
|---|--|----------------|----------------|----------------|---------------------|----------------|----------------|----------------|----------------|--------------------------|
| Marketing year  | Carryover stocks (October 1) <sup>1/</sup> |                |                |                | Pro-duction         | Total supply   | Disappearance  |                |                | Average price to growers |
|   | Manu- facturers                            | Under loan     | Other          | Total          |                     |                | Total          | Export         | Other          |                          |
|   | Million pounds                             | Million pounds | Million pounds | Million pounds | Million pounds      | Million pounds | Million pounds | Million pounds | Million pounds | Cents                    |
| 1966  | 1,065.4                                    | 261.9          | 68.0           | 1,395.3        | 586.7               | 1,982.0        | 600.5          | 56.4           | 544.1          | 66.9                     |
| 1967  | 1,038.1                                    | 276.7          | 66.7           | 1,381.5        | 540.6               | 1,922.2        | 598.1          | 53.4           | 544.7          | 71.8                     |
| 1968  | 966.5                                      | 321.7          | 35.9           | 1,324.1        | 563.4               | 1,887.5        | 571.0          | 54.9           | 516.1          | 73.7                     |
| 1969  | 941.6                                      | 340.8          | 34.1           | 1,316.5        | 591.4               | 1,907.9        | 565.2          | 58.1           | 507.1          | 69.6                     |
| 1970  | 858.0                                      | 454.8          | 29.9           | 1,342.7        | 560.5               | 1,903.2        | 557.4          | 54.4           | 503.0          | 72.2                     |
| 1971  | 854.4                                      | 463.4          | 28.0           | 1,345.8        | 472.6               | 1,818.4        | 569.9          | 54.7           | 515.2          | 0.9                      |
| 1972 <sup>3/</sup>  | 887.7                                      | 327.7          | 33.0           | 1,248.4        | <sup>4/</sup> 572.7 | 1,821.1        |                |                |                |                          |
|   |  |                |                |                |                     |                |                |                |                |                          |
| MARYLAND, TYPE 32<br>(October-September Marketing Year)           |  |                |                |                |                     |                |                |                |                |                          |
| 1966  | 47.4                                       | 22.5           | 29.8           | 99.7           | 36.1                | 135.8          | 40.2           | 16.5           | 23.7           | 48.6                     |
| 1967  | 48.9                                       | 18.5           | 28.2           | 95.6           | 32.4                | 128.0          | 36.0           | 15.7           | 20.3           | 62.4                     |
| 1968  | 57.8                                       | 9.3            | 24.9           | 92.0           | 32.0                | 124.0          | 48.7           | 10.4           | 38.3           | 69.8                     |
| 1969  | 56.8                                       | --             | 18.5           | 75.3           | 28.0                | 103.3          | 41.3           | 12.2           | 29.1           | 75.1                     |
| 1970  | 42.6                                       | --             | 19.4           | 62.0           | 29.4                | 91.4           | 39.5           | 11.9           | 27.6           | 78.6                     |
| 1971  | 34.7                                       | --             | 17.1           | 51.8           | 28.1                | 79.9           | 25.5           | 8.0            | 17.5           | 81.9                     |
| 1972 <sup>3/</sup>  | 33.7                                       | --             | 20.7           | 54.4           | <sup>4/</sup> 24.7  | 79.1           |                |                |                |                          |
|   |  |                |                |                |                     |                |                |                |                |                          |
| TOTAL, TYPES 35-36<br>(October-September Marketing Year)          |  |                |                |                |                     |                |                |                |                |                          |
| 1966  | 36.3                                       | 19.6           | 4.7            | 60.6           | 21.3                | 81.9           | 21.4           | 4.4            | 17.0           | 37.3                     |
| 1967  | 35.9                                       | 21.3           | 3.3            | 60.5           | 15.5                | 76.0           | 17.8           | 3.0            | 14.8           | 40.8                     |
| 1968  | 36.6                                       | 17.1           | 4.5            | 58.2           | 18.0                | 76.2           | 17.1           | 2.0            | 15.1           | 47.4                     |
| 1969  | 41.1                                       | 15.0           | 3.0            | 59.1           | 18.1                | 77.2           | 23.5           | 2.3            | 21.2           | 40.3                     |
| 1970  | 32.7                                       | 18.2           | 2.8            | 53.7           | 15.4                | 69.1           | 19.2           | 2.5            | 16.7           | 46.0                     |
| 1971  | 32.6                                       | 14.3           | 2.9            | 49.8           | 15.7                | 65.5           | 19.3           | 1.9            | 17.4           | 47.1                     |
| 1972 <sup>3/</sup>  | 30.9                                       | 12.7           | 2.6            | 46.2           | <sup>4/</sup> 15.7  | 61.9           |                |                |                |                          |
|   |  |                |                |                |                     |                |                |                |                |                          |
| ONE SUCKER, TYPE 35<br>(October-September Marketing Year)         |  |                |                |                |                     |                |                |                |                |                          |
| 1966  | 22.4                                       | 11.7           | 3.8            | 37.9           | 14.2                | 52.2           | 14.8           | 3.3            | 11.5           | 37.8                     |
| 1967  | 22.3                                       | 12.0           | 3.1            | 37.4           | 10.4                | 47.8           | 11.4           | 2.4            | 9.0            | 42.3                     |
| 1968  | 23.9                                       | 8.7            | 3.8            | 36.4           | 12.6                | 49.0           | 10.4           | 1.4            | 9.0            | 49.5                     |
| 1969  | 28.3                                       | 7.8            | 2.6            | 38.7           | 13.3                | 52.0           | 17.6           | 1.9            | 15.7           | 40.7                     |
| 1970  | 21.9                                       | 10.1           | 2.3            | 34.3           | 10.9                | 45.2           | 13.2           | 2.0            | 11.2           | 47.5                     |
| 1971  | 22.2                                       | 7.8            | 2.0            | 32.0           | 11.2                | 43.2           | 13.8           | 1.6            | 12.2           | 47.3                     |
| 1972 <sup>3/</sup>  | 20.7                                       | 6.3            | 2.4            | 29.4           | <sup>4/</sup> 11.1  | 40.5           |                |                |                |                          |
|   |  |                |                |                |                     |                |                |                |                |                          |
| GREEN RIVER, TYPE 36<br>(October-September Marketing Year)        |  |                |                |                |                     |                |                |                |                |                          |
| 1966  | 13.9                                       | 7.9            | .9             | 22.7           | 7.0                 | 29.7           | 6.6            | 1.0            | 5.5            | 36.3                     |
| 1967  | 13.6                                       | 9.3            | .2             | 23.1           | 5.0                 | 28.2           | 6.4            | .6             | 5.8            | 37.9                     |
| 1968  | 12.7                                       | 8.4            | .7             | 21.7           | 5.4                 | 27.1           | 6.7            | .6             | 6.1            | 42.7                     |
| 1969  | 12.8                                       | 7.2            | .4             | 20.4           | 4.8                 | 25.2           | 5.9            | .4             | 5.5            | 39.4                     |
| 1970  | 10.8                                       | 8.1            | .5             | 19.4           | 4.4                 | 23.8           | 6.0            | .5             | 5.5            | 42.5                     |
| 1971  | 10.4                                       | 6.5            | .9             | 17.8           | 4.5                 | 22.3           | 5.5            | .3             | 5.2            | 46.4                     |
| 1972 <sup>3/</sup>  | 10.2                                       | 6.4            | .2             | 16.8           | <sup>4/</sup> 4.6   | 21.4           |                |                |                |                          |
|   |  |                |                |                |                     |                |                |                |                |                          |
| VIRGINIA SUN-CURED, TYPE 37<br>(October-September Marketing Year) |  |                |                |                |                     |                |                |                |                |                          |
| 1966  | 3.9  | --             | .4             | 4.3            | 1.5                 | 5.8            | 1.6            | .4             | 1.3            | 42.3                     |
| 1967  | 3.8  | --             | .4             | 4.2            | 1.3                 | 5.5            | 1.5            | .4             | 1.2            | 45.2                     |
| 1968  | 3.7  | --             | .2             | 3.9            | 1.2                 | 5.1            | 1.3            | .2             | 1.1            | 53.2                     |
| 1969  | 3.5  | --             | .3             | 3.8            | 1.3                 | 5.1            | 1.8            | .3             | 1.5            | 52.8                     |
| 1970  | 3.2  | --             | .1             | 3.3            | 1.1                 | 4.4            | 1.3            | .3             | 1.0            | 53.8                     |
| 1971  | 3.1  | --             | .1             | 3.2            | 1.1                 | 4.2            | 1.2            | .2             | 1.0            | 54.1                     |
| 1972 <sup>3/</sup>  | 3.0  | --             | -              | 3.0            | <sup>4/</sup> 1.0   | 4.0            |                |                |                |                          |
|   |  |                |                |                |                     |                |                |                |                |                          |

See footnotes at end of table.

Continued--

TABLE 3.--Production, stocks, supply, disappearance on a farm-sales-weight basis, and price of specified types, 1966-72

| PENNSYLVANIA SEEDLEAF, TYPE 41<br>(October-September Marketing Year)          |                                 |                   |                   |                   |                   |                   |                   |                   |                   |                          |
|---|---------------------------------|-------------------|-------------------|-------------------|-------------------|-------------------|-------------------|-------------------|-------------------|--------------------------|
| Marketing year  | Carryover stocks (October 1) 2/ |                   |                   |                   | Pro-duction       | Total supply      | Disappearance     |                   |                   | Average price to growers |
|   | Manu-<br>facturers              | Under<br>loan     | Other             | Total             |                   |                   | Total             | Export            | Other             |                          |
|   | Million<br>pounds               | Million<br>pounds | Million<br>pounds | Million<br>pounds | Million<br>pounds | Million<br>pounds | Million<br>pounds | Million<br>pounds | Million<br>pounds | Cents                    |
| 1966  | 105.5                           | --                | 22.2              | 127.7             | 38.5              | 166.2             | 54.0              | 1.5               | 52.5              | 25.0                     |
| 1967  | 86.5                            | --                | 25.5              | 112.3             | 38.3              | 150.6             | 41.9              | .6                | 41.3              | 28.0                     |
| 1968  | 87.3                            | --                | 21.4              | 108.7             | 37.3              | 146.0             | 40.9              | .9                | 40.0              | 30.0                     |
| 1969  | 79.3                            | --                | 25.8              | 105.1             | 37.5              | 142.6             | 45.3              | .6                | 44.7              | 30.0                     |
| 1970  | 70.5                            | --                | 26.8              | 97.3              | 32.0              | 129.3             | 42.2              | .2                | 42.0              | 31.0                     |
| 1971  | 59.4                            | --                | 27.6              | 87.0              | 27.2              | 114.2             | 44.0              | .4                | 43.6              | 36.0                     |
| 1972 3/   | 53.8                            | --                | 16.4              | 70.2              | 4/ 23.1           | 93.3              |                   |                   |                   |                          |
|   |                                 |                   |                   |                   |                   |                   |                   |                   |                   |                          |
| MIAMI VALLEY (OHIO) FILLER, TYPES 42-44<br>(October-September Marketing Year) |                                 |                   |                   |                   |                   |                   |                   |                   |                   |                          |
| 1966  | 14.6                            | --                | 1.5               | 16.2              | 6.0               | 22.3              | 6.8               | --                | 6.8               | 28.0                     |
| 1967  | 14.5                            | .2                | .8                | 15.5              | 3.6               | 19.1              | 6.2               | --                | 6.2               | 29.0                     |
| 1968  | 11.2                            | --                | 1.7               | 12.9              | 3.4               | 16.3              | 5.4               | --                | 5.4               | 31.0                     |
| 1969  | 9.6                             | --                | 1.3               | 10.9              | 2.8               | 13.7              | 4.7               | --                | 4.7               | 32.5                     |
| 1970  | 8.2                             | .1                | .7                | 9.0               | 2.9               | 11.9              | 4.1               | --                | 4.1               | 38.0                     |
| 1971  | 7.4                             | --                | .4                | 7.8               | 3.3               | 11.1              | 4.1               | --                | 4.1               | 41.0                     |
| 1972 3/   | 6.7                             | --                | .3                | 7.0               | 4/ 3.1            | 10.1              |                   |                   |                   |                          |
|   |                                 |                   |                   |                   |                   |                   |                   |                   |                   |                          |
| PUERTO RICAN FILLER, TYPE 46<br>(October-September Marketing Year)            |                                 |                   |                   |                   |                   |                   |                   |                   |                   |                          |
| 1966  | 34.5                            | --                | 17.2              | 51.8              | 12.0              | 63.8              | 23.4              | .1                | 23.3              | 31.3                     |
| 1967  | 30.2                            | 1.5               | 8.8               | 40.5              | 10.8              | 51.3              | 16.9              | --                | 16.9              | 33.1                     |
| 1968  | 28.5                            | 1.5               | 4.4               | 34.4              | 7.6               | 42.0              | 16.2              | --                | 16.2              | 33.3                     |
| 1969  | 21.1                            | 1.5               | 3.2               | 25.8              | 6.1               | 31.9              | 12.6              | --                | 12.6              | 33.6                     |
| 1970  | 12.9                            | 5.5               | .9                | 19.3              | 4.5               | 23.8              | 8.8               | --                | 8.8               | 36.1                     |
| 1971  | 9.7                             | 2.8               | 2.5               | 15.0              | 6.7               | 21.7              | 9.0               | --                | 9.0               | 36.7                     |
| 1972 3/   | 9.0                             | --                | 3.7               | 12.7              | 4/ 4.0            | 16.7              |                   |                   |                   |                          |
|   |                                 |                   |                   |                   |                   |                   |                   |                   |                   |                          |
| CONNECTICUT BINDER, TYPES 51-52<br>(October-September Marketing Year)         |                                 |                   |                   |                   |                   |                   |                   |                   |                   |                          |
| 1966  | 12.7                            | 3.7               | 2.9               | 19.3              | 3.8               | 23.2              | 6.8               | 1.6               | 5.1               | 51.2                     |
| 1967  | 9.2                             | 3.3               | 3.9               | 16.4              | 2.7               | 19.1              | 7.9               | 2.2               | 5.7               | 54.5                     |
| 1968  | 7.3                             | 1.5               | 2.4               | 11.2              | 2.8               | 14.0              | 5.1               | .4                | 4.7               | 59.5                     |
| 1969  | 4.8                             | 1.4               | 2.7               | 8.9               | 2.3               | 11.2              | 4.2               | .3                | 3.9               | 58.2                     |
| 1970  | 3.0                             | 2.1               | 1.9               | 7.0               | 2.9               | 9.9               | 2.8               | .3                | 2.5               | 65.5                     |
| 1971  | 2.9                             | 1.9               | 2.4               | 7.2               | 3.0               | 10.1              | 2.7               | .1                | 2.6               | 65.5                     |
| 1972 3/   | 3.3                             | 2.0               | 2.1               | 7.4               | 4/ 2.6            | 10.0              |                   |                   |                   |                          |
|   |                                 |                   |                   |                   |                   |                   |                   |                   |                   |                          |
| CONNECTICUT BROADLEAF, TYPE 51<br>(October-September Marketing Year)          |                                 |                   |                   |                   |                   |                   |                   |                   |                   |                          |
| 1966  | 10.4                            | 1.0               | 2.5               | 13.9              | 2.7               | 16.6              | 4.8               | 1.6               | 3.1               | 52.0                     |
| 1967  | 7.7                             | 1.1               | 3.0               | 11.8              | 2.0               | 13.8              | 5.3               | 2.2               | 3.2               | 55.0                     |
| 1968  | 6.0                             | .5                | 2.0               | 8.5               | 2.1               | 10.6              | 4.3               | .4                | 3.9               | 60.0                     |
| 1969  | 3.7                             | .4                | 2.1               | 6.2               | 1.7               | 7.9               | 3.6               | .3                | 3.3               | 59.0                     |
| 1970  | 1.9                             | .9                | 1.5               | 4.3               | 2.2               | 6.5               | 2.1               | .3                | 1.8               | 67.0                     |
| 1971  | 1.8                             | 1.1               | 1.5               | 4.4               | 2.3               | 6.7               | 1.6               | .1                | 1.5               | 67.0                     |
| 1972 3/   | 2.3                             | 1.2               | 1.6               | 5.1               | 4/ 2.0            | 7.1               |                   |                   |                   |                          |
|   |                                 |                   |                   |                   |                   |                   |                   |                   |                   |                          |
| CONNECTICUT HAVANA SEED, TYPE 52<br>(October-September Marketing Year)        |                                 |                   |                   |                   |                   |                   |                   |                   |                   |                          |
| 1966  | 2.3                             | 2.7               | .4                | 5.4               | 1.1               | 6.6               | 2.0               | --                | 2.0               | 49.5                     |
| 1967  | 1.5                             | 2.2               | .8                | 4.5               | .7                | 5.3               | 2.5               | --                | 2.5               | 53.0                     |
| 1968  | 1.4                             | 1.0               | .4                | 2.8               | .7                | 3.5               | .8                | --                | .8                | 58.0                     |
| 1969  | 1.1                             | 1.0               | .6                | 2.7               | .6                | 3.3               | .6                | --                | .6                | 56.0                     |
| 1970  | 1.1                             | 1.2               | .4                | 2.7               | .7                | 3.4               | .7                | --                | .7                | 61.0                     |
| 1971  | 1.1                             | .8                | .9                | 2.8               | .6                | 3.4               | 1.1               | --                | 1.1               | 60.0                     |
| 1972 3/   | 1.0                             | .8                | .5                | 2.3               | 4/ .6             | 2.9               |                   |                   |                   |                          |
|   |                                 |                   |                   |                   |                   |                   |                   |                   |                   |                          |

See footnotes at end of table.

Continued--

TABLE 3.--Production, stocks, supply, disappearance on a farm-sales-weight basis, and price of specified types, 1966-72

WISCONSIN BINDER, TYPES 54-55  
(October-September Marketing Year)

| Marketing year     | Carryover stocks (October 1) <sup>2/</sup> |                   |                   |                   | Pro-duction        | Total supply      | Disappearance     |                   |                   | Average price to growers |
|--------------------|--|-------------------|-------------------|-------------------|--------------------|-------------------|-------------------|-------------------|-------------------|--------------------------|
|                    | Manu-<br>facturers                         | Under<br>loan     | Other             | Total             |                    |                   | Total             | Export            | Other             |                          |
|                    | Million<br>pounds                          | Million<br>pounds | Million<br>pounds | Million<br>pounds | Million<br>pounds  | Million<br>pounds | Million<br>pounds | Million<br>pounds | Million<br>pounds | Cents                    |
| 1966               | 44.1                                       | 3.6               | 2.8               | 50.6              | 16.2               | 66.8              | 16.8              | .3                | 16.5              | 33.3                     |
| 1967               | 39.2                                       | 6.6               | 4.2               | 50.0              | 16.1               | 66.1              | 17.4              | .4                | 17.0              | 34.2                     |
| 1968               | 40.0                                       | 5.4               | 3.4               | 48.8              | 14.0               | 62.8              | 22.5              | .4                | 22.1              | 37.3                     |
| 1969               | 38.6                                       | .1                | 1.6               | 40.3              | 13.2               | 53.5              | 18.2              | .3                | 17.9              | 41.8                     |
| 1970               | 33.3                                       | --                | 1.9               | 35.2              | 18.4               | 53.6              | 16.5              | .1                | 16.4              | 51.1                     |
| 1971               | 35.2                                       | --                | 1.9               | 37.1              | 22.5               | 59.7              | 20.4              | <sup>6/</sup>     | 20.4              | 54.9                     |
| 1972 <sup>3/</sup> | 36.9                                       | .1                | 2.3               | 39.3              | <sup>4/</sup> 23.8 | 63.1              |                   |                   |                   |                          |

SOUTHERN WISCONSIN, TYPE 54  
(October-September Marketing Year)

|                    |      |               |     |      |                    |      |      |    |      |      |
|--------------------|------|---------------|-----|------|--------------------|------|------|----|------|------|
| 1966               | 21.1 | .5            | .8  | 22.4 | 7.4                | 29.8 | 9.1  | -- | 9.1  | 34.3 |
| 1967               | 19.6 | .7            | .4  | 20.7 | 7.2                | 27.9 | 8.1  | -- | 8.1  | 34.3 |
| 1968               | 18.8 | .3            | .8  | 19.9 | 7.4                | 27.3 | 7.7  | -- | 7.7  | 36.8 |
| 1969               | 19.1 | <sup>6/</sup> | .5  | 19.6 | 6.4                | 26.0 | 9.3  | -- | 9.3  | 40.2 |
| 1970               | 16.5 | --            | .2  | 16.7 | 9.4                | 26.1 | 7.3  | -- | 7.3  | 50.3 |
| 1971               | 18.2 | --            | .5  | 18.7 | 12.0               | 30.8 | 10.5 | -- | 10.5 | 55.6 |
| 1972 <sup>3/</sup> | 19.1 | <sup>6/</sup> | 1.2 | 20.3 | <sup>4/</sup> 11.6 | 31.9 |      |    |      |      |

NORTHERN WISCONSIN, TYPE 55  
(October-September Marketing year)

|                    |      |               |     |      |                    |      |      |    |      |      |
|--------------------|------|---------------|-----|------|--------------------|------|------|----|------|------|
| 1966               | 23.0 | 3.1           | 2.0 | 28.2 | 8.8                | 37.0 | 7.7  | .3 | 7.4  | 32.4 |
| 1967               | 19.6 | 5.9           | 3.8 | 29.3 | 8.9                | 38.2 | 9.3  | .4 | 8.9  | 34.1 |
| 1968               | 21.2 | 5.1           | 2.6 | 28.9 | 6.7                | 35.6 | 14.9 | .4 | 14.5 | 37.9 |
| 1969               | 19.5 | <sup>6/</sup> | 1.1 | 20.7 | 6.7                | 27.4 | 8.9  | .3 | 8.6  | 43.4 |
| 1970               | 16.8 | --            | 1.8 | 18.6 | 9.0                | 27.6 | 9.2  | .1 | 9.1  | 52.0 |
| 1971               | 17.0 | --            | 1.4 | 18.4 | 10.5               | 28.9 | 9.9  | -- | 9.9  | 54.0 |
| 1972 <sup>3/</sup> | 17.8 | --            | 1.2 | 19.0 | <sup>4/</sup> 12.2 | 31.2 |      |    |      |      |

TOTAL CIGAR WRAPPER, TYPES 61-62  
(July-June Marketing Year)

|                    |      |    |     |      |      |      |      |     |      |       |
|--------------------|------|----|-----|------|------|------|------|-----|------|-------|
| 1966               | 20.1 | -- | 4.4 | 24.5 | 21.0 | 45.5 | 20.8 | 4.2 | 16.6 | 257.0 |
| 1967               | 19.5 | -- | 5.2 | 24.7 | 17.6 | 42.3 | 20.8 | 4.9 | 15.9 | 308.0 |
| 1968               | 17.8 | -- | 3.7 | 21.5 | 18.1 | 39.6 | 19.9 | 3.8 | 16.1 | 275.7 |
| 1969               | 17.7 | -- | 2.0 | 19.7 | 15.9 | 35.6 | 14.1 | 1.9 | 12.2 | 336.2 |
| 1970               | 19.0 | -- | 2.4 | 21.4 | 14.9 | 36.3 | 14.4 | 1.9 | 12.5 | 350.9 |
| 1971               | 19.3 | -- | 2.7 | 22.0 | 12.4 | 34.4 | 14.6 | 3.4 | 11.2 | 348.0 |
| 1972 <sup>3/</sup> | 17.1 | -- | 2.7 | 19.8 | 10.1 | 29.9 |      |     |      |       |

CONNECTICUT SHADE, TYPE 61  
(July-June Marketing Year)

|                    |      |    |     |      |                   |      |      |     |      |       |
|--------------------|------|----|-----|------|-------------------|------|------|-----|------|-------|
| 1966               | 13.9 | -- | 2.4 | 16.3 | 13.7              | 30.0 | 14.0 | 3.5 | 10.5 | 295.0 |
| 1967               | 13.3 | -- | 2.7 | 16.0 | 9.6               | 25.6 | 12.9 | 3.3 | 9.6  | 360.0 |
| 1968               | 11.5 | -- | 1.2 | 12.7 | 10.2              | 22.9 | 10.8 | 1.7 | 9.1  | 280.0 |
| 1969               | 11.2 | -- | .9  | 12.1 | 8.1               | 20.2 | 8.0  | 1.0 | 7.0  | 400.0 |
| 1970               | 11.4 | -- | .8  | 12.2 | 9.3               | 21.5 | 7.6  | 1.0 | 6.6  | 400.0 |
| 1971               | 12.5 | -- | 1.4 | 13.9 | 7.7               | 21.6 | 8.4  | 2.6 | 5.8  | 400.0 |
| 1972 <sup>3/</sup> | 11.4 | -- | 1.8 | 13.2 | <sup>4/</sup> 5.5 | 18.7 |      |     |      |       |

GEORGIA AND FLORIDA SHADE, TYPE 62  
(July-June Marketing Year)

|                    |     |    |     |     |                   |      |     |     |     |       |
|--------------------|-----|----|-----|-----|-------------------|------|-----|-----|-----|-------|
| 1966               | 6.2 | -- | 2.0 | 8.2 | 7.3               | 15.5 | 6.8 | 0.7 | 6.1 | 185.0 |
| 1967               | 6.2 | -- | 2.5 | 8.7 | 8.0               | 16.7 | 7.9 | 1.6 | 6.3 | 245.0 |
| 1968               | 6.3 | -- | 2.5 | 8.8 | 7.9               | 16.7 | 9.1 | 2.1 | 7.0 | 270.0 |
| 1969               | 6.5 | -- | 1.0 | 7.5 | 7.8               | 15.3 | 6.1 | 0.9 | 5.2 | 280.0 |
| 1970               | 7.5 | -- | 1.7 | 9.2 | 5.6               | 14.8 | 6.7 | 0.9 | 5.8 | 270.0 |
| 1971               | 6.8 | -- | 1.3 | 8.1 | 4.7               | 12.8 | 6.2 | 0.8 | 5.4 | 262.0 |
| 1972 <sup>3/</sup> | 5.7 | -- | 0.9 | 6.6 | <sup>4/</sup> 4.6 | 11.2 |     |     |     |       |

<sup>1/</sup> Tabulated by broad groupings of ownership. "Other" represents stocks of dealers and those held in the United States by foreign manufacturers. Stocks shown are as of July 1 for flue-cured and cigar wrapper and October 1 for all other types. <sup>2/</sup> Sales substituted for production. <sup>3/</sup> Subject to revision. <sup>4/</sup> November 1 estimate, U. S. Crop Reporting Board, SRS. <sup>5/</sup> Includes 4.7 million pounds destroyed by fire. <sup>6/</sup> Less than 50,000 pounds.

Detail may not add to total because of rounding.

TABLE 4.--Summary of tobacco leaf represented in inventories of tobacco sheet, for cigar binder and wrapper, and for cigarettes (including smoking tobacco), separately

## REPORTED WEIGHT

|                  |           | Cigar Binder and Wrapper |           |           |           |           |            |
|------------------|-----------|--------------------------|-----------|-----------|-----------|-----------|------------|
| U.S. type number |           | October 1,               |           |           | July 1,   | April 1,  | January 1, |
|                  |           | 1972                     | 1971      | 1970      | 1972      | 1972      | 1972       |
|                  |           | 1,000 lb.                | 1,000 lb. | 1,000 lb. | 1,000 lb. | 1,000 lb. | 1,000 lb.  |
| 11-14            | Stemmed   | 6                        | 2         | 5         | 0         | 0         | 2          |
| 32               | Stemmed   | 52                       | 32        | 67        | 48        | 46        | 40         |
|                  | Unstemmed | 574                      | 469       | 547       | 788       | 512       | 528        |
| 41               | Stemmed   | 401                      | 337       | 257       | 577       | 482       | 444        |
|                  | Total     | 975                      | 806       | 804       | 1,365     | 994       | 972        |
| 42-44            | Stemmed   | 40                       | 26        | 48        | 37        | 35        | 32         |
| 46               | Stemmed   | 9                        | 8         | 12        | 9         | 9         | 9          |
| 51               | Unstemmed | 46                       | 27        | 95        | 24        | 34        | 54         |
|                  | Unstemmed | 72                       | 57        | 46        | 67        | 73        | 68         |
| 52               | Stemmed   | 0                        | 25        | 0         | 0         | 0         | 0          |
|                  | Total     | 72                       | 82        | 46        | 67        | 73        | 68         |
|                  | Unstemmed | 0                        | 0         | 41        | 0         | 0         | 0          |
| 54               | Stemmed   | 153                      | 153       | 0         | 393       | 223       | 211        |
|                  | Total     | 153                      | 153       | 41        | 393       | 223       | 211        |
|                  | Unstemmed | 17                       | 38        | 115       | 21        | 20        | 50         |
| 55               | Stemmed   | 26                       | 95        | 25        | 69        | 66        | 86         |
|                  | Total     | 43                       | 133       | 140       | 90        | 86        | 136        |
|                  | Unstemmed | 17                       | 19        | 6         | 15        | 17        | 15         |
| 61               | Stemmed   | 19                       | 17        | 31        | 10        | 20        | 10         |
|                  | Total     | 36                       | 36        | 37        | 25        | 37        | 25         |
| 62               | Stemmed   | 1                        | 10        | 7         | 10        | 10        | 15         |
| 81               | Stemmed   | 5                        | 7         | 2         | 3         | 4         | 11         |
|                  | Unstemmed | 9                        | 6         | 11        | 8         | 7         | 12         |
| 82               | Stemmed   | 15                       | 3         | 11        | 7         | 7         | 3          |
|                  | Total     | 24                       | 9         | 22        | 15        | 14        | 15         |
|                  | Unstemmed | 0                        | 7         | 5         | 7         | 8         | 11         |
| 83               | Stemmed   | 87                       | 67        | 92        | 93        | 91        | 80         |
|                  | Total     | 87                       | 74        | 97        | 100       | 99        | 91         |
| 84               | Stemmed   | 11                       | 8         | 17        | 12        | 12        | 8          |
| 85               | Stemmed   | 8                        | 6         | 15        | 9         | 9         | 6          |
|                  | Unstemmed | 14                       | 13        | 36        | 14        | 11        | 31         |
| 86               | Stemmed   | 13                       | 14        | 13        | 14        | 14        | 14         |
|                  | Total     | 27                       | 27        | 49        | 28        | 25        | 45         |
| 87               | Stemmed   | 34                       | 15        | 0         | 26        | 25        | 19         |
| 88               | Stemmed   | 2                        | 1         | 0         | 2         | 2         | 1          |
| 89               | Stemmed   | 20                       | 19        | 29        | 20        | 15        | 19         |
|                  | Unstemmed |                          |           |           |           |           |            |
| Total            | Stemmed   | 749                      | 636       | 902       | 944       | 682       | 769        |
|                  | Stemmed   | 902                      | 845       | 631       | 1,339     | 1,070     | 1,010      |
|                  | Total     | 1,651                    | 1,481     | 1,533     | 2,283     | 1,752     | 1,779      |

### Cigarettes (including smoking tobacco)

|          |           |        |        |        |        |        |        |
|----------|-----------|--------|--------|--------|--------|--------|--------|
| 11-14    | Unstemmed | 1,514  | 2,038  | 2,816  | 1,628  | 1,847  | 2,203  |
|          | Stemmed   | 9,755  | 8,469  | 8,506  | 9,909  | 9,653  | 8,710  |
|          | Total     | 11,269 | 10,507 | 11,322 | 11,537 | 11,500 | 10,913 |
|          | Unstemmed | 759    | 1,300  | 2,802  | 963    | 1,114  | 1,137  |
| 31       | Stemmed   | 4,624  | 4,776  | 4,799  | 6,410  | 5,375  | 5,136  |
|          | Total     | 5,383  | 6,076  | 7,601  | 7,373  | 6,489  | 6,273  |
| 32       | Stemmed   | 200    | 138    | 105    | 114    | 110    | 116    |
|          | Unstemmed | 1,505  | 3,459  | 5,225  | 1,919  | 2,364  | 2,847  |
| 41       | Stemmed   | 449    | 1,009  | 986    | 573    | 668    | 840    |
|          | Total     | 1,954  | 4,468  | 6,211  | 2,492  | 3,032  | 3,687  |
|          | Unstemmed | 30     | 54     | 150    | 38     | 29     | 30     |
| 61       | Stemmed   | 57     | 167    | 340    | 74     | 107    | 162    |
|          | Total     | 87     | 221    | 490    | 112    | 136    | 192    |
|          | Unstemmed | 3,931  | 4,779  | 1/     | 4,394  | 4,660  | 4,725  |
| 91 1/    | Stemmed   | 1,254  | 911    | 1/     | 1,245  | 1,134  | 967    |
|          | Unstemmed | 0      | 0      | 1/     | 0      | 0      | 0      |
| 92-93 1/ | Stemmed   | 315    | 0      | 1/     | 374    | 563    | 0      |
|          | Unstemmed | 3,931  | 4,779  | 4,841  | 4,394  | 4,660  | 4,725  |
| 91-93 1/ | Stemmed   | 1,569  | 911    | 1,183  | 1,619  | 1,627  | 967    |
|          | Total     | 5,500  | 5,690  | 6,024  | 6,013  | 6,357  | 5,692  |
|          | Unstemmed |        |        |        |        |        |        |
| Total    | Stemmed   | 7,739  | 11,630 | 15,834 | 8,942  | 10,014 | 10,942 |
|          | Stemmed   | 16,654 | 15,470 | 15,919 | 18,699 | 17,610 | 15,931 |
|          | Total     | 24,393 | 27,100 | 31,753 | 27,641 | 27,624 | 26,873 |

### Grand Total

|       |           |        |        |        |        |        |        |
|-------|-----------|--------|--------|--------|--------|--------|--------|
| Total | Unstemmed | 8,488  | 12,266 | 16,736 | 9,886  | 10,696 | 11,711 |
| all   | Stemmed   | 17,556 | 16,315 | 16,550 | 20,038 | 18,680 | 16,941 |
| types | Total     | 26,044 | 28,581 | 33,286 | 29,924 | 29,376 | 28,652 |

1/ In previous quarters these tobaccos were grouped together and designated type 90. The increasing volume of imported flue-cured and burley leaf made separate reporting necessary.

TABLE 5.--Stocks of leaf tobacco, by types, showing separately quantities owned by dealers and manufacturers, October 1, 1972, compared with October 1, 1971 1/ 2/

### REPORTED WEIGHT<sup>†</sup>

| U.S. type number | Reported as owned by manufacturers 3/ |           |            | Reported as owned by dealers (including loan stocks) 3/ |                 |           |           |                 |
|------------------|---------------------------------------|-----------|------------|---|-----------------|-----------|-----------|-----------------|
|                  | October 1, 1972                       |           |            | October 1, 1971   | October 1, 1972 |           |           | October 1, 1971 |
|                  | Unstemmed                             | Stemmed   | Total      |   | Unstemmed       | Stemmed   | Total     |                 |
|                  | 1,000 lb.                             | 1,000 lb. | 1,000 lb.  | 1,000 lb.   | 1,000 lb.       | 1,000 lb. | 1,000 lb. | 1,000 lb.       |
| 11-14            | 72,588                                | 913,130   | 985,718 1/ | 829,533 1/  | 460,674         | 288,844   | 749,518   | 924,673         |
| 21               | 4,284                                 | 19        | 4,303      | 3,988   | 2,393           | 14        | 2,407     | 3,292           |
| 22               | 30,335                                | 416       | 30,751     | 29,208  | 14,362          | 7         | 14,369    | 14,634          |
| 23               | 4,651                                 | 449       | 5,100      | 3,848   | 3,455           | 11        | 3,466     | 3,293           |
| 21-23            | 39,270                                | 884       | 40,154     | 37,044  | 20,210          | 32        | 20,242    | 21,219          |
| 31               | 13,104                                | 579,717   | 592,821    | 571,863   | 300,627         | 15,960    | 316,587   | 433,345         |
| 32               | 612                                   | 23,650    | 24,262     | 25,880  | 10,223          | 7,363     | 17,586    | 15,563          |
| 31-32            | 13,716                                | 603,367   | 617,083    | 597,743   | 310,850         | 23,323    | 334,173   | 448,908         |
| 35               | 12,573                                | 4,410     | 16,983     | 18,036  | 7,937           | 2         | 7,939     | 8,909           |
| 36               | 7,057                                 | 1,389     | 8,446      | 8,692   | 5,813           | 31        | 5,844     | 6,458           |
| 37               | 947                                   | 1,234     | 2,181      | 2,359   | 0               | 1         | 1         | 59              |
| 35-37            | 20,577                                | 7,033     | 27,610     | 29,087  | 13,750          | 34        | 13,784    | 15,426          |
| 41               | 25,429                                | 16,208    | 41,637     | 51,547  | 13,279          | 1,660     | 14,939    | 25,779          |
| 42-44            | 5,446                                 | 266       | 5,712      | 6,303   | 296             | 17        | 313       | 350             |
| 46 4/            | 5,705                                 | 1,596     | 7,301      | 7,603   | 2,882           | 194       | 3,076     | 4,467           |
| 41-46            | 36,580                                | 18,070    | 54,650     | 65,453  | 16,457          | 1,871     | 18,328    | 30,596          |
| 51               | 1,134                                 | 646       | 1,780      | 1,461   | 2,294           | 227       | 2,521     | 2,288           |
| 52               | 875                                   | 23        | 898        | 991   | 1,075           | 4         | 1,079     | 1,409           |
| 54               | 14,116                                | 2,793     | 16,909     | 17,164  | 928             | 118       | 1,046     | 499             |
| 55               | 8,396                                 | 5,302     | 13,698     | 15,763  | 350             | 456       | 806       | 1,221           |
| 51-55            | 24,521                                | 8,764     | 33,285     | 35,379  | 4,647           | 805       | 5,452     | 5,417           |
| 61               | 8,419                                 | 1,299     | 9,718      | 11,417  | 1,231           | 5         | 1,236     | 1,079           |
| 62               | 4,685                                 | 332       | 5,017      | 5,867   | 1,701           | 311       | 2,012     | 1,994           |
| 61-62            | 13,104                                | 1,631     | 14,735     | 17,284  | 2,932           | 316       | 3,248     | 3,073           |
| 72               | 4                                     | 286       | 290        | 254   | 130             | 248       | 378       | 214             |
| 73 5/            | 0                                     | 3,499     | 3,499      | 3,740   | 0               | 53        | 53        | 57              |
| 72-73            | 4                                     | 3,785     | 3,789      | 3,994   | 130             | 301       | 431       | 271             |
| 81               | 88                                    | 107       | 195        | 279   | 50              | 93        | 143       | 159             |
| 82               | 896                                   | 792       | 1,688      | 1,501   | 1,698           | 190       | 1,888     | 1,800           |
| 83               | 6,866                                 | 7,108     | 13,974     | 14,714  | 9,007           | 4,754     | 13,761    | 13,804          |
| 84               | 2,383                                 | 1,349     | 3,732      | 4,935   | 1,463           | 338       | 1,801     | 2,436           |
| 85               | 2,455                                 | 2,488     | 4,943      | 5,284   | 2,980           | 128       | 3,108     | 1,160           |
| 86               | 3,217                                 | 3,300     | 6,517      | 7,068   | 561             | 422       | 983       | 822             |
| 87               | 402                                   | 638       | 1,040      | 945   | 2,395           | 35        | 2,430     | 4,624           |
| 88               | 2,569                                 | 1,604     | 4,173      | 4,650   | 937             | 25        | 962       | 202             |
| 89               | 4,724                                 | 1,557     | 6,281      | 6,208   | 4,008           | 306       | 4,314     | 3,114           |
| 81-89            | 23,600                                | 18,943    | 42,543     | 45,584  | 23,099          | 6,291     | 29,390    | 28,121          |
| 91               | 318,134                               | 6,423     | 324,557    | 313,200   | 444             | 101       | 545       | 930             |
| 92               | 4,220                                 | 2,930     | 7,150      | 4,264   | 5,674           | 2,872     | 8,546     | 7,326           |
| 93               | 1,180                                 | 3,306     | 4,486      | 2,001   | 1,691           | 1,533     | 3,224     | 2,500           |
| 91-93            | 323,534                               | 12,659    | 336,193    | 319,465   | 7,809           | 4,506     | 12,315    | 10,756          |
| 11-93            | 567,494                               | 1,588,266 | 2,155,760  | 1,980,566   | 860,558         | 326,323   | 1,186,881 | 1,488,460       |

1/ Total includes stocks of leaf reported in tobacco sheet. See separate reportings in table 4.

2/ These statistics represent the quantity of leaf tobacco reported as owned by all leaf tobacco dealers, manufacturers, quasi-manufacturers, growers' cooperative associations, warehousemen, brokers, holders, and owners subject to provisions of the Tobacco Stocks and Standards Act approved January 14, 1929, and the amendments thereto passed in the 72nd and 74th Congress. The quantities owned by dealers and manufacturers have been tabulated separately on a type total basis.

3/ This table should be considered as representing only the approximate quantities owned respectively by dealers and manufacturers. The quantities shown as owned by manufacturers represent domestic manufacturers only. All Government loan stocks are dealers' holdings.

4/ Includes stocks on the island of Puerto Rico.

5/ For explanation of stocks included in this classification see footnote 2 on page 7.

TABLE 6.--Stocks of leaf tobacco owned by dealers and manufacturers, summary by types, October 1, 1972, compared with other quarters 1/ 2/

## REPORTED WEIGHT

| Type number  | U.S. type number | October 1, 1972 3/ |           |           | October 1, 1971 | July 1, 1972 | April 1, 1972 |
|--|------------------|--------------------|-----------|-----------|-----------------|--------------|---------------|
|  |                  | Unstemmed          | Stemmed   | Total     |                 |              |               |
|  |                  | 1,000 lb.          | 1,000 lb. | 1,000 lb. |                 |              |               |
| Flue-cured   | 11-14            | 533,262            | 1,201,974 | 1,735,236 | 1,754,206       | 1,424,524    | 1,609,225     |
| Virginia fire-cured                                  | 21               | 6,677              | 33        | 6,710     | 7,280           | 8,309        | 9,473         |
| Tennessee and Kentucky fire-cured (Eastern District) | 22               | 44,697             | 423       | 45,120    | 43,842          | 51,570       | 58,682        |
| Kentucky and Tennessee fire-cured (Western District) | 23               | 8,106              | 460       | 8,566     | 7,141           | 8,969        | 3,512         |
| Total fire-cured                                     | 21-23            | 59,480             | 916       | 60,396    | 58,263          | 68,848       | 77,667        |
| Burley   | 31               | 313,731            | 595,677   | 909,408   | 1,005,208       | 1,005,972    | 1,116,308     |
| Southern Maryland                                    | 32               | 10,835             | 31,013    | 41,848    | 41,443          | 50,521       | 32,274        |
| Total light air-cured                                | 31-32            | 324,566            | 626,690   | 951,256   | 1,046,651       | 1,056,493    | 1,148,582     |
| One Sucker   | 35               | 20,510             | 4,412     | 24,922    | 26,945          | 27,971       | 30,901        |
| Green River  | 36               | 12,870             | 1,420     | 14,290    | 15,150          | 15,063       | 15,775        |
| Virginia sun-cured                                   | 37               | 947                | 1,235     | 2,182     | 2,418           | 2,517        | 2,757         |
| Total dark air-cured                                 | 35-37            | 34,327             | 7,067     | 41,394    | 44,513          | 45,551       | 49,433        |
| Pennsylvania Seedleaf                                | 41               | 38,708             | 17,868    | 56,576    | 77,326          | 64,720       | 73,512        |
| Ohio Filler (Miami Valley)                           | 42-44            | 5,742              | 283       | 6,025     | 6,653           | 7,089        | 8,223         |
| Puerto Rico:   |                  |                    |           |           |                 |              |               |
| in United States                                     | 46               | 1,862              | 847       | 2,709     | 3,829           | 2,978        | 3,273         |
| in Puerto Rico                                       | 46               | 406,325            | 943       | 407,268   | 8,241           | 9,966        | 6,260         |
| Total cigar filler                                   | 41-46            | 452,637            | 19,941    | 472,578   | 96,049          | 84,753       | 91,268        |
| Connecticut Valley Broadleaf                         | 51               | 3,428              | 873       | 4,301     | 3,749           | 4,750        | 5,013         |
| Connecticut Valley Havana Seed                       | 52               | 1,950              | 27        | 1,977     | 2,400           | 2,096        | 2,384         |
| Southern Wisconsin                                   | 54               | 15,044             | 2,911     | 17,955    | 17,663          | 19,924       | 22,320        |
| Northern Wisconsin                                   | 55               | 8,746              | 5,758     | 14,504    | 16,984          | 16,887       | 19,655        |
| Total cigar binder                                   | 51-55            | 29,168             | 9,569     | 38,737    | 40,796          | 43,657       | 49,372        |
| Connecticut shade                                    | 61               | 9,650              | 1,304     | 10,954    | 12,496          | 11,890       | 12,769        |
| Georgia and Florida shade                            | 62               | 6,386              | 643       | 7,029     | 7,861           | 5,898        | 6,838         |
| Total cigar wrapper                                  | 61-62            | 16,036             | 1,947     | 17,983    | 20,357          | 17,788       | 19,607        |
| Perique  | 72               | 134                | 534       | 668       | 468             | 480          | 517           |
| Other miscellaneous domestic                         | 73 4/            | 0                  | 3,552     | 3,552     | 3,797           | 3,661        | 3,125         |
| Total miscellaneous domestic                         | 72-73            | 134                | 4,086     | 4,220     | 4,265           | 4,141        | 3,642         |
| Cuba   | 81               | 138                | 200       | 338       | 438             | 354          | 375           |
| Indonesia  | 82               | 2,594              | 982       | 3,576     | 3,301           | 3,428        | 3,381         |
| Philippine Islands                                   | 83               | 15,873             | 11,862    | 27,735    | 28,518          | 24,385       | 23,239        |
| Brazil   | 84               | 3,846              | 1,687     | 5,533     | 7,371           | 6,072        | 4,733         |
| Colombia   | 85               | 5,435              | 2,616     | 8,051     | 6,444           | 8,524        | 4,950         |
| Dominican Republic                                   | 86               | 3,778              | 3,722     | 7,500     | 7,890           | 8,826        | 9,692         |
| Paraguay   | 87               | 2,797              | 673       | 3,470     | 5,569           | 3,209        | 4,341         |
| Mexico   | 88               | 3,506              | 1,629     | 5,135     | 4,852           | 4,593        | 4,717         |
| Other foreign-grown cigar leaf                       | 89               | 8,732              | 1,863     | 10,595    | 9,322           | 11,122       | 9,186         |
| Total foreign-grown cigar-leaf                       | 81-89            | 46,699             | 25,234    | 71,933    | 73,705          | 70,513       | 64,614        |
| Foreign-grown Oriental and Aromatic                  | 91               | 318,578            | 6,524     | 325,102   | 314,130         | 351,691      | 321,410       |
| Foreign-grown flue-cured                             | 92               | 9,894              | 5,802     | 15,696    | 11,590          | 20,308       | 9,199         |
| Foreign-grown burley                                 | 93               | 2,871              | 4,839     | 7,710     | 4,501           | 7,009        | 6,224         |
| Total imported cigarette and smoking tobacco leaf    | 91-93            | 331,343            | 17,165    | 348,508   | 330,221         | 379,008      | 336,833       |
| Total all types                                      | 11-93            | 1,827,652          | 1,914,589 | 3,742,241 | 3,469,026       | 3,195,276    | 3,450,243     |

1/ Totals include stocks of leaf reported in tobacco sheet. See separate reporting in table 4.

2/ These statistics represent the quantity of leaf tobacco reported as owned by all leaf tobacco dealers, manufacturers, quasi-manufacturers, growers' cooperative associations, warehousemen, brokers, holders, and owners except (a) the original growers of tobacco; (b) manufacturers who in the first three quarters of 1971, according to the returns of the Commissioner of Internal Revenue, manufactured less than 35,000 pounds of tobacco, less than 185,000 cigars, or less than 750,000 cigarettes, pursuant to the provisions of the Tobacco Stocks and Standards Act approved January 14, 1929, and the amendments thereto passed in the 72nd and 74th Congress.

3/ Subject to revision.

4/ For explanation of stocks included in this classification see footnote 2 on page 7.



All persons have equal rights to all services and benefits of USDA's Agricultural Marketing Service. If you feel you have been denied benefits or services because of race, color, creed, sex or national origin, write directly to: The Secretary of Agriculture, U.S. Department of Agriculture, Washington, D.C. 20250.

UNITED STATES DEPARTMENT OF AGRICULTURE  
WASHINGTON, D. C. 20250

POSTAGE AND FEES PAID  
U.S. DEPARTMENT OF  
AGRICULTURE  
AGR-101



OFFICIAL BUSINESS

PENALTY FOR PRIVATE USE, \$300

NOTICE

If you no longer need this publication, check here  return this sheet, and your name will be dropped from the mailing list.

If your address should be changed, write the new address on this sheet and return the whole sheet to:

Tobacco Division  
Agricultural Marketing Service  
U. S. Department of Agriculture  
Washington, D. C. 20250

Tobacco Inspection Services are available to all residents of the United States regardless of race, creed, or national origin. Violations should be reported to the Secretary of Agriculture, Washington, D. C. 20250