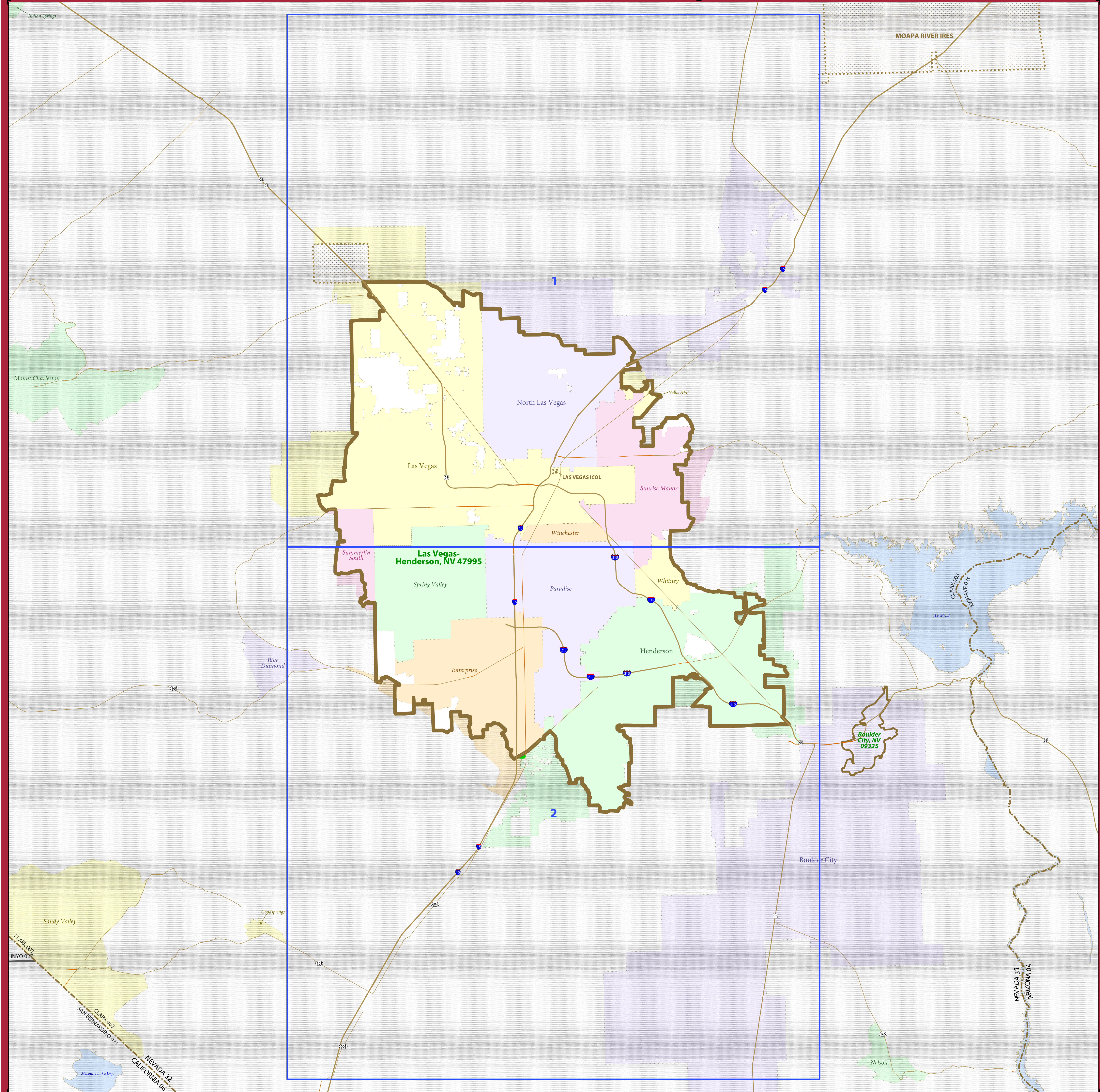


2010 CENSUS - URBANIZED AREA REFERENCE MAP: Las Vegas--Henderson, NV



LEGEND	
SYMBOL DESCRIPTION	LABEL STYLE
International	CANADA
Federal American Indian Reservation	L'ANSE RES 1880
Off-Reservation Trust Land	T1880
Urbanized Area	Dover, DE 24580
Urban Cluster	Toole, VT 88057
State (or statistically equivalent entity)	NEW YORK 36
County (or statistically equivalent entity)	ERIE 029
Minor Civil Division (MCD) ^{1,2}	Bristol town 07485
Consolidated City	MILFORD 47500
Incorporated Place ^{1,3}	Davis 18100
Census Designated Place (CDP) ²	Incline Village 35100

DESCRIPTION	SYMBOL	DESCRIPTION	SYMBOL
Interstate	[Blue shield with red and blue border]	Water Body	[Blue area]
U.S. Highway	[Red shield]	Military	[Blue square with white border]
State Highway	[Yellow shield]	Outside Subject Area	[Grey area]
Other Road	[Thin black line]		
Railroad	[Black line with cross-ticks]		
Perennial Stream	[Blue line with wavy border]		
Intermittent Stream	[Blue line with dashed border]		

Where international, state, county, and/or MCD boundaries coincide, the map shows the boundary symbol for only the highest-ranking of these boundaries.

1 A "*" following an MCD name denotes a false MCD. A "*" following a place name indicates that a false MCD exists with the same name and FIPS code as the place; the false MCD label is not shown.

2 MCD boundaries are shown in the following states in which some or all MCDs function as general-purpose governmental units: Connecticut, Illinois, Indiana, Kansas, Maine, Massachusetts, Michigan, Minnesota, Missouri, Nebraska, New Hampshire, New Jersey, New York, North Dakota, Ohio, Pennsylvania, Rhode Island, South Dakota, Vermont, and Wisconsin. (Note that Illinois and Nebraska have some counties covered by nongovernmental precincts and Missouri has most counties covered by nongovernmental townships.)

3 Place label color corresponds to the place fill color.
Label colors: Davis Davis Davis Davis Davis

COUNTIES IN SUBJECT URBANIZED AREA
32003 Clark

All legal boundaries and names are as of January 1, 2010. Urban areas are based on results from the 2010 Decennial Census. The boundaries shown on this map are for Census Bureau statistical data collection and tabulation purposes only; their depiction and designation for statistical purposes does not constitute a determination of jurisdictional authority or rights of ownership or entitlement.

Geographic Vintage: 2010 Census (reference date: January 1, 2010)
Data Source: U.S. Census Bureau's MAI/TIGER database (TIGER10)
Map Created by: Geography Division: March 09, 2012

U.S. DEPARTMENT OF COMMERCE Economics and Statistics Administration U.S. Census Bureau

Projection: Albers Equal Area Conic
Datum: NAD 83
Spheroid: GRS 80
1st Standard Parallel: 36 10 07
2nd Standard Parallel: 40 50 08
Central Meridian: -117 01 18
Latitude of Projection's Origin: 35 00 07
False Easting: 0
False Northing: 0

The plotted map scale is 1:22998

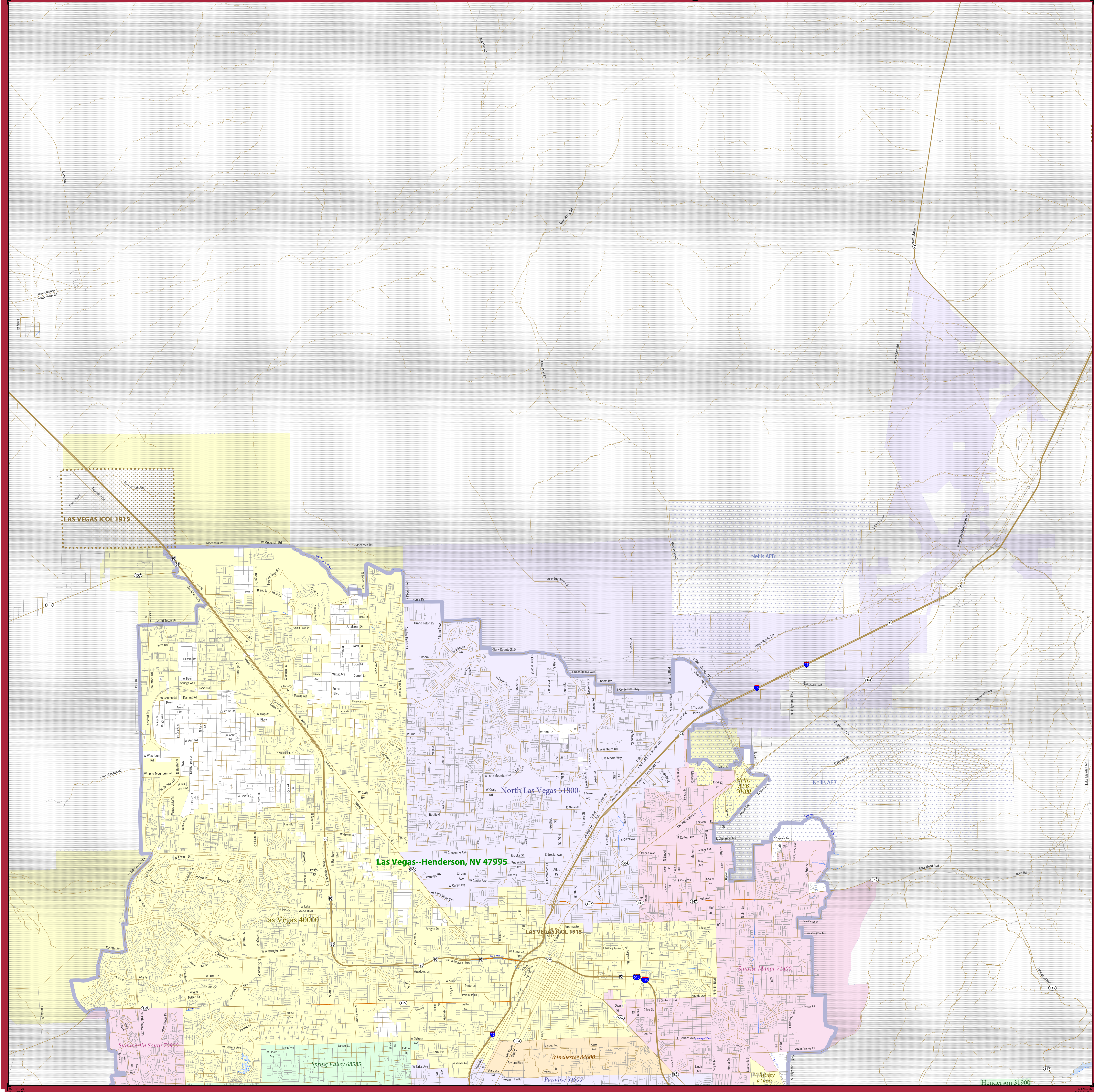
0 3 6 9 12 15 Kilometers
0 3 6 9 12 Miles



INDEX SHEET
Total Sheets: 3
Index Sheets: 1
Parent Sheets: 2

UA NAME: Las Vegas--Henderson, NV
UA CODE: 47995
ENTITY TYPE: Urbanized Area (UA)
ST: Nevada (32)

2010 CENSUS - URBANIZED AREA REFERENCE MAP: Las Vegas--Henderson, NV



SYMBOL DESCRIPTION	SYMBOL	LABEL STYLE
International	--- ---	CANADA
Federal American Indian Reservation	L'ANSE RES 1880
Off-Reservation Trust Land	T1880
Urbanized Area	█	Dover, DE 24580
Urban Cluster	█	Toole, VT 88057
State (or statistically equivalent entity)	--- ---	NEW YORK 36
County (or statistically equivalent entity)	---	ERIE 029
Minor Civil Division (MCD) ^{1,2}	---	Bristol town 07485
Consolidated City	MILFORD 47500
Incorporated Place ^{1,3}	Davis 18100
Census Designated Place (CDP) ²	Incline Village 35100

DESCRIPTION	SYMBOL	DESCRIPTION	SYMBOL
Interstate	— — —	Water Body	■ Pleasant Lake
U.S. Highway	— —	Military	■ Fort Belvoir
State Highway	— —	Outside Subject Area	■
Other Road	— —		
Railroad	— — —		
Perennial Stream	— — —		
Intermittent Stream	— — —		

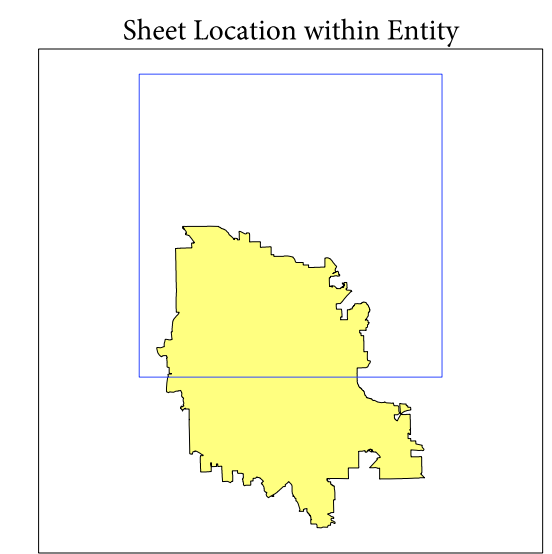
Where international, state, county, and/or MCD boundaries coincide, the map shows the boundary symbol for only the highest-ranking of these boundaries.

1 A "*" following an MCD name denotes a false MCD. A "*" following a place name indicates that a false MCD exists with the same name and FIPS code as the place; the false MCD label is not shown.

2 MCD boundaries are shown in the following states in which some or all MCDs function as general-purpose governmental units: Connecticut, Illinois, Indiana, Kansas, Maine, Massachusetts, Michigan, Minnesota, Missouri, Nebraska, New Hampshire, New Jersey, New York, North Dakota, Ohio, Pennsylvania, Rhode Island, South Dakota, Vermont, and Wisconsin. (Note that Illinois and Nebraska have some counties covered by nongovernmental townships.)

3 Place label color corresponds to the place fill color.
Label colors: Davis Davis Davis Davis Davis

SUBJECT AREA COUNTIES ON MAP SHEET
32003 Clark

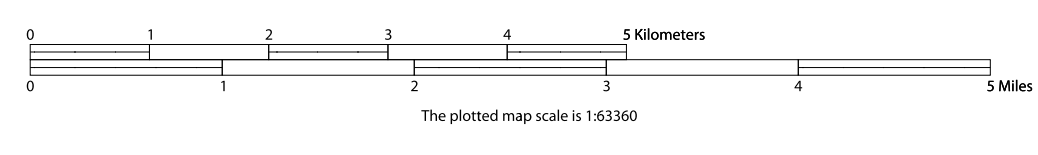


All legal boundaries and names are as of January 1, 2010. Urban areas are based on results from the 2010 Decennial Census. The boundaries shown on this map are for Census Bureau statistical data collection and tabulation purposes only; their depiction and designation for statistical purposes does not constitute a determination of jurisdictional authority or rights of ownership or entitlement.

Geographic Vintage: 2010 Census (reference date: January 1, 2010)
Data Source: U.S. Census Bureau's MAI/TIGER database (TIGER10)
Map Created by: Geography Division: March 09, 2012

U.S. DEPARTMENT OF COMMERCE Economics and Statistics Administration U.S. Census Bureau

Projection: Albers Equal Area Conic
Datum: NAD83
Spheroid: GRS 80
1st Standard Parallel: 36 10 07
2nd Standard Parallel: 40 50 08
Central Meridian: -117 01 18
Latitude of Projection's Origin: 35 00 07
False Easting: 0
False Northing: 0

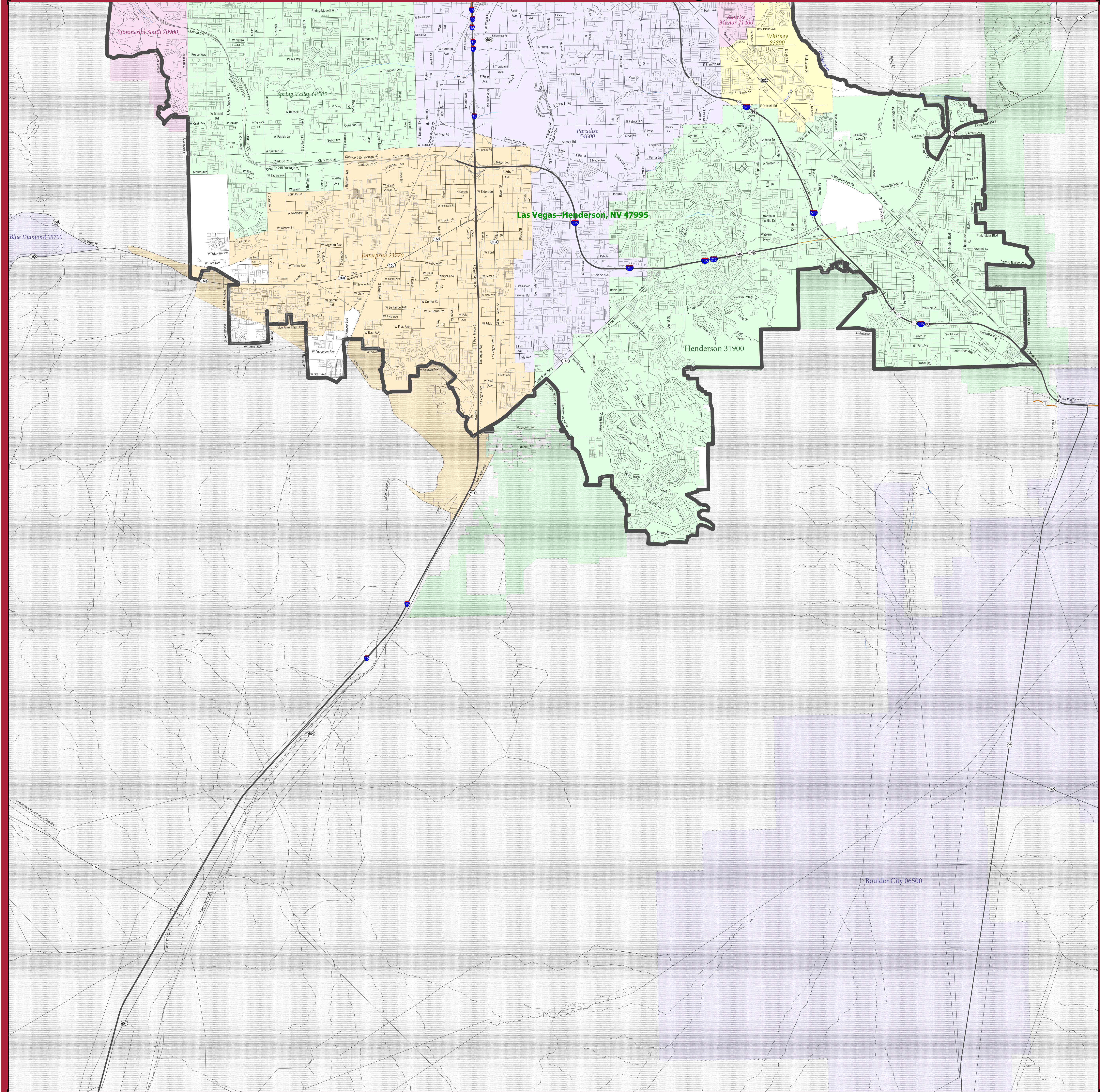


1	2
---	---

PARENT SHEET 1
Total Sheets: 3
Index Sheets: 1
Parent Sheets: 2

UA NAME: Las Vegas--Henderson, NV
UA CODE: 47995
ENTITY TYPE: Urbanized Area (UA)
ST: Nevada (32)

2010 CENSUS - URBANIZED AREA REFERENCE MAP: Las Vegas--Henderson, NV



LEGEND

SYMBOL DESCRIPTION	SYMBOL	LABEL STYLE
International	— · — · — ·	CANADA
Federal American Indian Reservation	■ ■ ■ ■ ■ ■ ■ ■ ■ ■	L'ANSE RES 1880
Off-Reservation Trust Land	■ ■ ■ ■ ■ ■ ■ ■ ■ ■	T1880
Urbanized Area	■ ■ ■ ■ ■ ■ ■ ■ ■ ■	Dover, DE 24580
Urban Cluster	■ ■ ■ ■ ■ ■ ■ ■ ■ ■	Toolee, VT 88057
State (or statistically equivalent entity)	— · — · — ·	NEW YORK 36
County (or statistically equivalent entity)	— · — · — ·	ERIE 029
Minor Civil Division (MCD) ^{1,2}	— · — · — ·	Bristol town 07485
Consolidated City	● ● ● ● ● ● ● ● ● ●	MILFORD 47500
Incorporated Place ³	■ ■ ■ ■ ■ ■ ■ ■ ■ ■	Davis 18100
Census Designated Place (CDP) ³	■ ■ ■ ■ ■ ■ ■ ■ ■ ■	Incline Village 35100

DESCRIPTION	SYMBOL	DESCRIPTION	SYMBOL
Interstate	— I — I — I	Water Body	■ ■ ■ ■ ■ ■ ■ ■ ■ ■
U.S. Highway	— U.S. — U.S. — U.S.	Military	■ ■ ■ ■ ■ ■ ■ ■ ■ ■
State Highway	— S.H. — S.H. — S.H.	Outside Subject Area	■ ■ ■ ■ ■ ■ ■ ■ ■ ■
Other Road	— M.L. — M.L. — M.L.		
Railroad	— R.R. — R.R. — R.R.		
Perennial Stream	— P.S. — P.S. — P.S.		
Intermittent Stream	— I.S. — I.S. — I.S.		

Where international, state, county, and/or MCD boundaries coincide, the map shows the boundary symbol for only the highest-ranking of these boundaries.

1 A " " following an MCD name denotes a false MCD. A " " following a place name indicates that a false MCD exists with the same name and FIPS code as the place; the false MCD label is not shown.

2 MCD boundaries are shown in the following states in which some or all MCDs function as general-purpose governmental units: Connecticut, Illinois, Indiana, Kansas, Maine, Massachusetts, Michigan, Minnesota, Missouri, Nebraska, New Hampshire, New Jersey, New York, North Dakota, Ohio, Pennsylvania, Rhode Island, South Dakota, Vermont, and Wisconsin. (Note that Illinois and Nebraska have some counties covered by nongovernmental precincts and Missouri has most counties covered by nongovernmental townships.)

3 Place label color corresponds to the place fill color.
Label colors: Davis Davis Davis Davis Davis

SUBJECT AREA COUNTIES ON MAP SHEET
32003 Clark

All legal boundaries and names are as of January 1, 2010. Urban areas are based on results from the 2010 Decennial Census. The boundaries shown on this map are for Census Bureau statistical data collection and tabulation purposes only; their depiction and designation for statistical purposes does not constitute a determination of jurisdictional authority or rights of ownership or entitlement.

Geographic Vintage: 2010 Census (reference date: January 1, 2010)
Data Source: U.S. Census Bureau's MAI/TIGER database (TAB10)
Map Created by: Geography Division: March 09, 2012

U.S. DEPARTMENT OF COMMERCE Economics and Statistics Administration U.S. Census Bureau

Projection: Albers Equal Area Conic
Datum: NAD 83
Spheroid: GRS 80
1st Standard Parallel: 36 10 07
2nd Standard Parallel: 40 50 08
Central Meridian: -117 01 18
Latitude of Projection's Origin: 35 00 07
False Easting: 0
False Northing: 0

0 1 2 3 4 5 Kilometers
0 1 2 3 4 Miles

The plotted map scale is 1:63360

United States Census Bureau

Key to Sheets

1	2
---	---

PARENT SHEET 2
Total Sheets: 3
Index Sheets: 1
Parent Sheets: 2

Sheet Location within Entity

UA NAME: Las Vegas--Henderson, NV
UA CODE: 47995
ENTITY TYPE: Urbanized Area (UA)
ST: Nevada (32)

2010 CENSUS UA REF MAP (PART 1)
2/16/09/002