

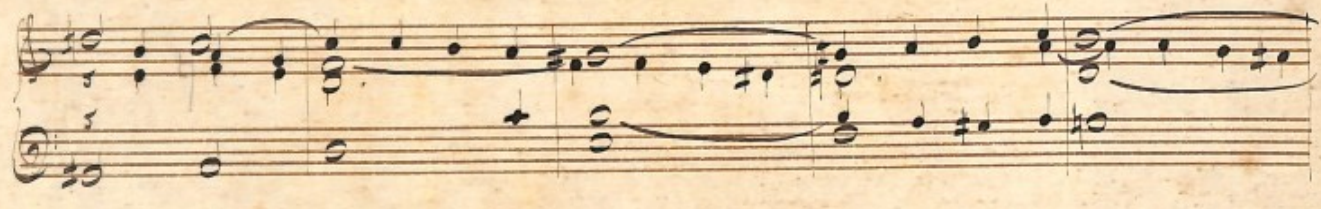
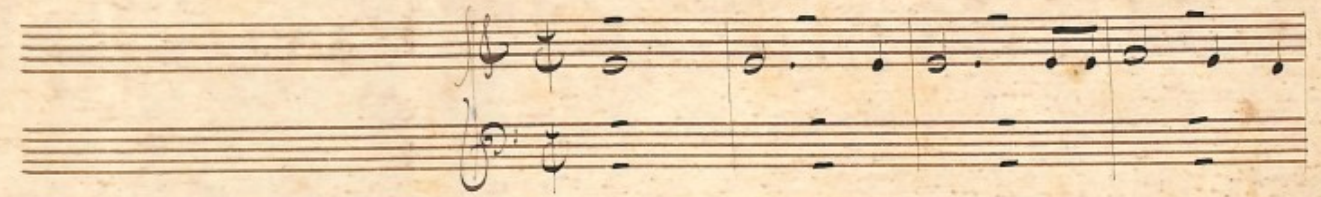
Petite Fugue.

à Mademoiselle Laure de Seyritz
respectueux souvenir de son professeur

É. Abriet Haury

30 Juin 1869

moderato



Handwritten musical notation on a five-line staff, featuring a treble clef and a key signature of two sharps (F# and C#). The notation includes a series of chords and melodic lines with various note values and accidentals.

Handwritten musical notation on a five-line staff, featuring a treble clef and a key signature of two sharps. The notation includes a series of chords and melodic lines with various note values and accidentals.

Handwritten musical notation on a five-line staff, featuring a treble clef and a key signature of two sharps. The notation includes a series of chords and melodic lines with various note values and accidentals.

Handwritten musical notation on a five-line staff, featuring a treble clef and a key signature of two sharps. The notation includes a series of chords and melodic lines with various note values and accidentals.

Handwritten musical notation on a five-line staff, featuring a treble clef and a key signature of two sharps. The notation includes a series of chords and melodic lines with various note values and accidentals.

Handwritten musical notation on a five-line staff, featuring a treble clef and a key signature of two sharps. The notation includes a series of chords and melodic lines with various note values and accidentals.

Handwritten musical notation on a grand staff. The upper staff contains a melodic line with eighth and sixteenth notes, and the lower staff contains a bass line with whole and half notes. The key signature has two sharps (F# and C#).

Handwritten musical notation on a grand staff. The upper staff features a melodic line with a fermata over a note. The lower staff contains a bass line with chords and single notes. A dynamic marking *f* is present above the staff.

Handwritten musical notation on a grand staff. The upper staff contains a melodic line with eighth notes. The lower staff contains a bass line with eighth notes and rests.

Handwritten musical notation on a grand staff. The upper staff contains a melodic line with chords and notes. The lower staff contains a bass line with chords and notes. A dynamic marking *mf* is present above the staff.

Handwritten musical notation on a grand staff. The upper staff contains a melodic line with chords and notes. The lower staff contains a bass line with chords and notes. A dynamic marking *ff* is present above the staff.

Handwritten musical notation on a grand staff. The upper staff contains a melodic line with chords and notes. The lower staff contains a bass line with chords and notes. A dynamic marking *mf* is present above the staff. The piece concludes with a double bar line and a fermata.