

SECRET

SECURITY INFORMATION

895

Philippine Airlines Inc

Bender #1

1 Jan 49 to 31 Dec 50

G-4 Adm File

SECURITY INFORMATION

SECRET

~~File~~ G-4-9

095 PAL

GENERAL HEADQUARTERS
SUPREME COMMANDER FOR THE ALLIED POWERS
APO 50G

AG 095 (9 Jun 50)GD

GD P&O NMW/GR/aid
16 JUN 50

Philippine Air Lines, Inc.
M.R.S. Building, Plaza Cervantes
Manila, Philippines

Attention: Mr. B. L. Anderson, Vice President
Traffic & Sales

Gentlemen:

Receipt of your letter of 9 June 1950 requesting copies of directives and instructions regarding commercial aviation within Japan is acknowledged.

On 15 June 1950 the Supreme Commander for the Allied Powers announced that establishment of commercial aviation within Japan by a non-Japanese company was authorized. The Philippines Mission was officially informed by Diplomatic Section of this action.

Within the next two weeks a representative of the Supreme Commander for the Allied Powers will visit your local representative and discuss the complete details and procedures relating to the inauguration of this internal air service.

MAILED 11 00 JUN 17 50

Very truly yours,

C. D. CONLEY
Major, AGD
Asst Adj Gen

C G-4 ROUTING

AC/S G-4	_____
DC/S G-4	_____
EXECUTIVE	_____
OPERATIONS	_____ <i>JH</i>
CONST & FAC	_____
SUPPLY	_____
PETROLEUM	_____
ADMINISTRATION	_____ <i>K</i>



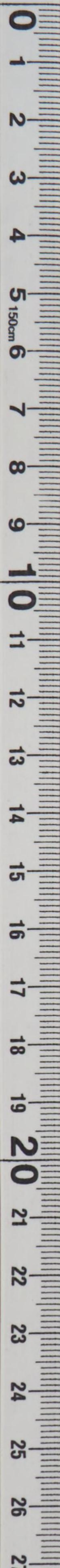
(E)

P40

6738

G-4 FILE

G-4 Comeback copy



DECLASSIFIED

Authority 975029

G-4 PLANS & OPERATIONS

GD P&O NMW/GR/aid
15 June 1950

MEMO FOR RECORD:

Subject: Commercial Aviation within Japan

1. For background see Journal No. 6608.
2. Reply to Philippine Air Lines held in abeyance until official announcement of SCAP policy on Jap civil airlines on 15 Jun 50.
3. Ltr to PAL informs them that DS officially informed Philippines Mission of this new policy and that SCAP representative would discuss with local PAL representative related details within next two weeks.
4. Within established policy.
5. Initiated action complete.

GR GR 26-6032

NMW NMW 26-6444



CROSS REFERENCE OTHER THAN RADIC

095 PAL

~~360.7~~

DATE: 14 June 50

FROM: G-4

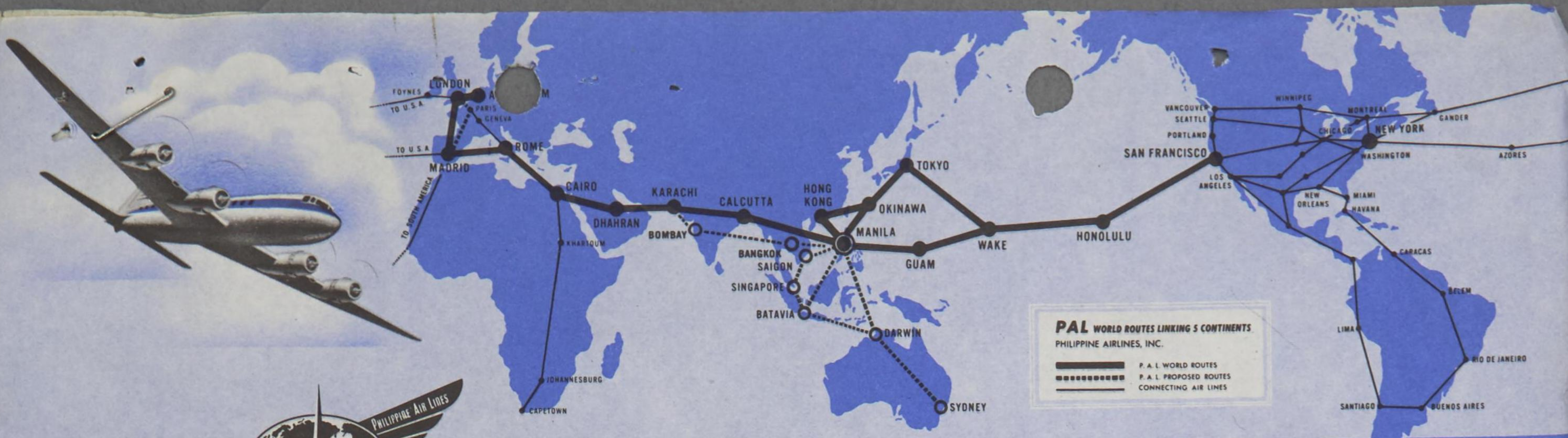
TO: ESS/FIB

SUBJECT: check note 2: REQUEST FOR REPORTS AND RECOMMENDATION RE
APPLICATION TO ENGAGE IN BUSINESS ACTIVITY
(ESTABLISHMENT AND MAINTAINANCE OF AIRLINE
FACILITIES IN JAPAN)

check notes 1 and 2 with memo for record

DOCUMENT ID . 004. LIC.

JC. FC. 6594 DIV P&OZ



LONDON • MADRID • ROME CAIRO • CALCUTTA • HONG KONG • TOKYO • MANILA • HONOLULU • SAN FRANCISCO • LOS ANGELES • SEATTLE • CHICAGO • WASHINGTON D. C. • NEW YORK

PHILIPPINE AIR LINES, inc.

9TH JUNE 1950

MANILA, PHILIPPINES
 M. R. S. Building, Plaza Cervantes
 Telephone: 2-79-66
 Cable: PALINC

*095
PAL*

SUBJECT : COMMERCIAL AVIATION WITHIN JAPAN

TO : GENERAL HEADQUARTERS
 THE SUPREME COMMANDER FOR THE ALLIED POWERS
 TOKYO, JAPAN

ATTENTION : AIR POLICY DIVISION

G I R REC-5CAP
 AG RECORDS
 Filed AG 695

PHILIPPINE AIR LINES, INC. AS ONE OF THE INTERNATIONAL CARRIERS OPERATING SERVICES TO AND FROM JAPAN, IS INTERESTED IN THE DEVELOPMENT OF COMMERCIAL AVIATION WITHIN JAPAN AND DESIRES TO COOPERATE IN EVERY WAY POSSIBLE TO ENSURE THE SUCCESS OF ANY PLAN YOU MAY HAVE FOR SAME.

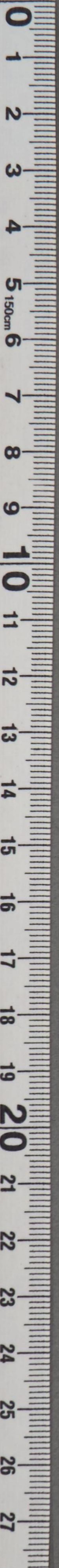
2. IT WILL BE APPRECIATED IF PHILIPPINE AIR LINES IS FURNISHED COPIES OF ALL DIRECTIVES AND INSTRUCTIONS THAT ARE ISSUED REGARDING COMMERCIAL AVIATION WITHIN JAPAN.

B. L. Anderson
 B. L. ANDERSON

VICE PRESIDENT - TRAFFIC & SALES

BLA:RPR

✓ IN 6608



MANILA, PHILIPPINES
M. R. 7 Building, Pasay City
Telephone 2-19-05
Cable: PALINC

9TH JUNE 1950

PHILIPPINE AIR LINES, INC.

SUBJECT : COMMERCIAL AVIATION WITHIN JAPAN
TO : GENERAL HEADQUARTERS
THE SUPREME COMMANDER FOR THE ALLIED POWERS
TOKYO, JAPAN
ATTENTION : AIR POLICY DIVISION

PHILIPPINE AIR LINES, INC. AS ONE OF THE INTERNATIONAL CARRIERS OPERATING SERVICES TO AND FROM JAPAN, IS INTERESTED IN THE DEVELOPMENT OF COMMERCIAL AVIATION WITHIN JAPAN AND DESIRES TO COOPERATE IN EVERY POSSIBLE TO ENSURE THE SUCCESS OF ANY PLAN YOU MAY HAVE FOR SAME.

IT WILL BE APPRECIATED IF PHILIPPINE AIR LINES IS FURNISHED COPIES OF ALL DIRECTIVES AND INSTRUCTIONS THAT ARE ISSUED REGARDING COMMERCIAL AVIATION WITHIN JAPAN.

B. L. ANDERSON
VICE PRESIDENT - TRAFFIC & SALES



SECRET

PLANS & OPERATIONS DIVISION

GD P&O NMW/GR/erf
13 June 1950

MEMO FOR RECORD:

SUBJECT: Commercial Aviation Within Japan (Philippine Air Lines, Inc.)

1. Ltr from Philippine Air Lines to SCA, 9 Jun 50, states company is interested in development of commercial aviation within Japan and desires copies of all directives and instructions on this subject be furnished PAL.
2. Approved procedure for announcement of this policy will comply with PAL's request.
3. In consideration of date on which this announcement is scheduled, reply to PAL is held in abeyance at present.
4. No further action by G-4 indicated at this time. Reply will be made after official announcement referred to above.
5. Within established policy.
6. Completes action on G-4 JN 6608.

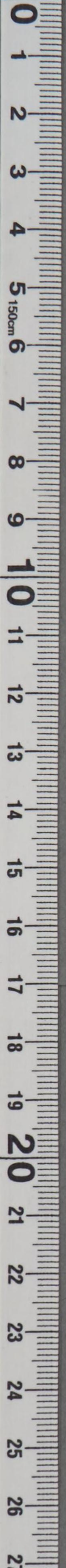
GR SR 26-6032
 NMW MMW 26-6444



G-4 ROUTING	
<input checked="" type="checkbox"/> C/S G-4	_____
<input type="checkbox"/> D AC/S G-4	_____
<input type="checkbox"/> EXECUTIVE	_____
<input checked="" type="checkbox"/> OPERATIONS	<u>SR</u>
<input type="checkbox"/> CONST & FAC	_____
<input type="checkbox"/> SUPPLY	_____
<input type="checkbox"/> PETROLEUM	_____
<input checked="" type="checkbox"/> ADMINISTRATION	<u>MMW</u>

SECRET

6608
Opus



GENERAL HEADQUARTERS
FAR EAST COMMAND
APO 500

ROUTING	
AG-4	
AG-4	
EXECUTIVE	
PLANS & POLICY	m
OPERATIONS	
TRANSPORTATION	
SUPPLY	
PETROLEUM	
BUDGET	
PERSONNEL	
ADMINISTRATION	j

095 PAK

AG 095 (19 Dec 49)GD

13 January 1950

Philippine Air Lines, Inc.
W. B. S. Building
Plaza Cervantes
Manila, P. I.

Gentlemen:

Reference is made to your letter to the Supreme Commander for the Allied Powers, 19 December 1949, which requested authority for Philippine Air Lines to fly the following alternate routings in both directions:

- (1) Manila to Tokyo direct with flagstop at Okinawa.
- (2) Manila to Tokyo via Taipei (Formosa) with flagstop at Okinawa.
- (3) Manila to Tokyo via Hong Kong and Taipei with flagstop at Okinawa.

There is no objection to Philippine Air Lines flying the above alternate air routes.

Very truly yours,

MAILED 1030 JAN 13 1950

Copies furnished:
Commanding General, Far
East Air Forces, APO 925
Mr. J. B. Shaver, PAL,
Tokyo, Japan

H. FRAZIER
Captain, AGD
Asst Adj Gen

DISPATCHES
13 JAN 1950
04 010

JLR
FOR
GLE

PaP
111

G-4 File Copy

GD R&P HCG/she
12 January 1950

MEMORANDUM FOR RECORD

SUBJECT: Request of PAL to fly certain Airways.

1. Letter from Philippine Air Lines (PAL) to SCAP, subject as above, 19 Dec 49, requests SCAP to authorize PAL to fly certain air routes.
2. Copy of above letter from the Philippine Air Lines was hand carried to FEAF for comment and recommendations by Lt. Col. Godman on 6 January 1950.
3. Memorandum to AC/S, G-4, from Deputy for Operations (Gen. Crabb) FEAF, 10 January 1950, subject as above, was hand carried to G-4. Memorandum interposes no objection to request of Philippine Air Lines to fly certain airways.
4. Inasmuch as routes requested by PAL are regular established airways and PAL and other airlines have been regularly flying these routes, there is no objection to PAL's request.
5. Proposed letter to PAL offers no objection to utilization by PAL of the airways requested.
6. Within policy.
7. Completes action on G-4 Journal No. 111.

H.C.G. HCG
M.N.H. MNH
F.L.R. FLR

COPY

PHILIPPINE AIR LINES, INC.

Air Mail

General Manager
A. Soriana Y Cia.

M.R.S. Building
Plaza Cervantes
Manila, P.I.

December 19, 1949

The Supreme Commander for the Allied Powers
APO 500
c/o Postmaster San Francisco, California

S I R:

In accordance with the terms of the authorization in its favor to engage in business in Japan and Okinawa, Philippine Air Lines respectfully requests that such authorization be implemented in the sense of allowing it to fly the following alternate routings in both directions;

- (1) Manila to Tokyo direct with flag-stop at Okinawa;
- (2) Manila to Tokyo via Taipeh (Formosa) with flagstop at Okinawa;
- (3) Manila to Tokyo via Hongkong and Taipeh with flagstop at Okinawa.

Philippine Air Lines has acquired proper authorizations from the governments concerned to use Hongkong and Taipeh as intermediate stops on the route Manila to Tokyo. The use of any of the routes above mentioned will not at all increase the number of landings per week that Philippine Air Lines will make at Okinawa and Tokyo.

Very respectfully,

PHILIPPINE AIR LINES, INC.

By:

DANIEL ME. GOMEZ
Secretary General

DMG/el

COPY

095 PAL

G-4 ROUTING	
A C/S G-4	_____
D AC/S G-4	_____
EXECUTIVE	_____
PLANS & POLICY	<i>Jhu</i>
OPERATIONS	_____
CONST & FAC	_____
TRANSPORTATION	_____
SUPPLY	_____
PETROLEUM	_____
BUDGET	_____
FROM: PERSONNEL	CINCFE
TO: ADMINISTRATION	<i>W</i> CG PHILCOM

GENERAL HEADQUARTERS
FAR EAST COMMAND

OUTGOING MESSAGE

GD P&P HCG/hv

RESTRICTED
Restricted

18 MAR 1949

180659

FROM: PERSONNEL
TO: ADMINISTRATION
CG PHILCOM.....ROUTINE

INFO: US AIR ATTACHE AMEMBASSY MANILA.....DEFERRED
CG RYCOM.....DEFERRED
CG FEAF.....COURIER

CX68623

REOURAD CHARLIE XRAY SIX EIGHT TWO EIGHT ZERO CMA
FOUR MARCH FOUR NINE CMA AND CHARLIE SUGAR UNCLE SUGAR ABLE FOX RADIO
ABLE FOX MIKE ABLE ITEM FIVE TWO TWO TWO FOUR CMA ONE TWO MARCH FOUR
NINE CMA TO CHARLIE ITEM NAN CHARLIE FOX EASY CMA INFO TO CHARLIE GEORGE
PETER HOW ITEM LOVE CHARLIE OBOE MIKE PD AUTHORITY IS HEREBY GRANTED
PHILIPPINE AIRLINES TO CHANGE PRESENT MANILA DASH OKINAWA DASH TOKYO
ROUTE TO MANILA DASH HONG KONG DASH OKINAWA DASH TOKYO IN BOTH DIRECTIONS
PD PARA THIS AUTHORITY DOES NOT REPEAT NOT ALLOW INCREASE IN FREQUENCY
OF FLIGHTS TO OKINAWA NOR AUTHORIZE INCREASED FACILITIES AT NAHA PD PARA
REQUEST PHILIPPINE AIRLINES BE SO ADVISED

OFFICIAL:

APPROVED BY:

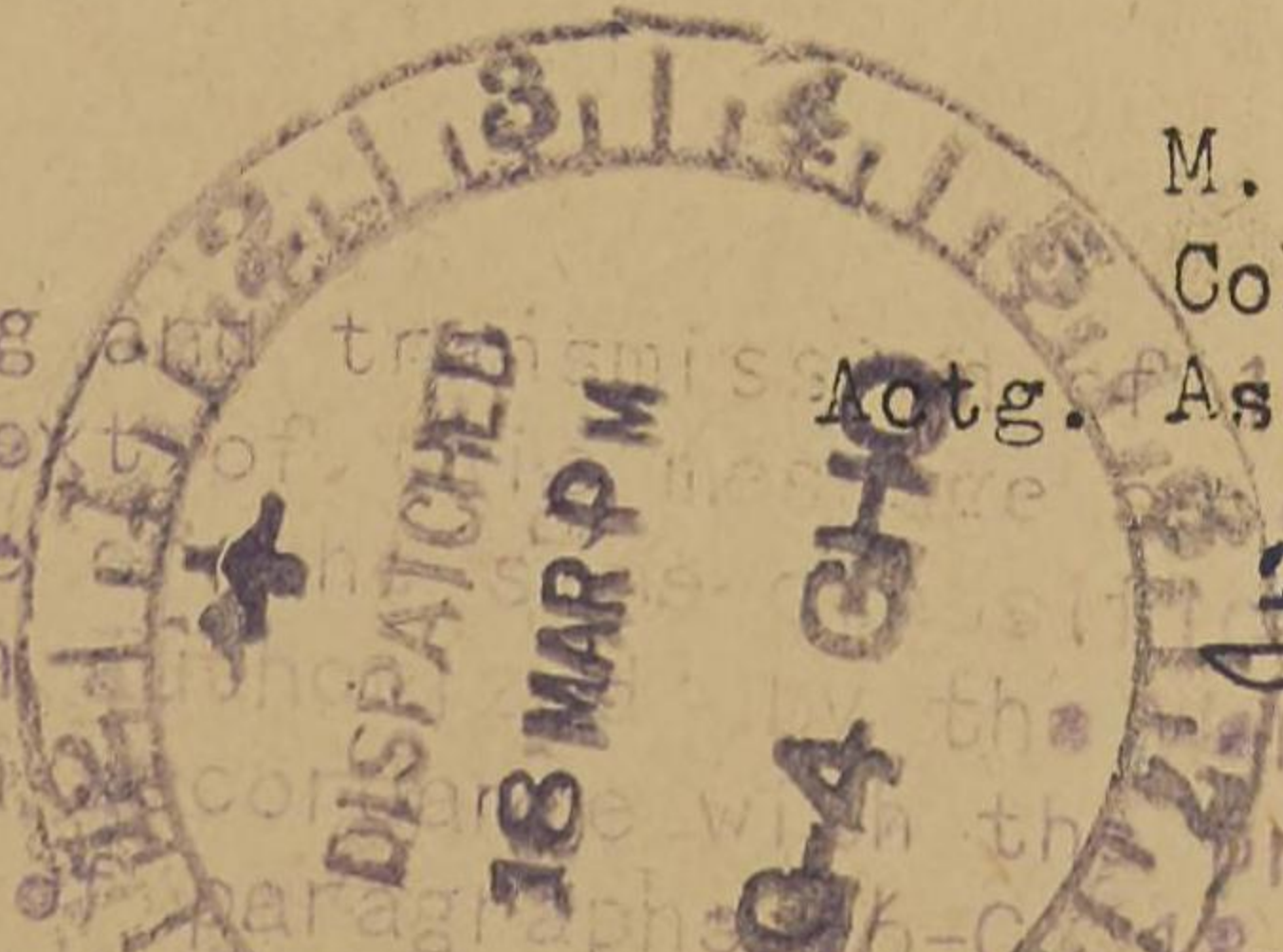
R. M. LEVY
Colonel, AGD
Adjutant General

M. V. PATTON
Colonel, GSC
Actg. Asst. Chief of Staff, G-4

Copies to:

- CinC
- C/S
- G-1
- G-2
- AG
- DS

Handling and transmission of this communication has been assigned to the Department of Defense, 53-D (1) (2) (3) (4) (5) (6) (7) (8) (9) (10) (11) (12) (13) (14) (15) (16) (17) (18) (19) (20) (21) (22) (23) (24) (25) (26) (27) (28) (29) (30) (31) (32) (33) (34) (35) (36) (37) (38) (39) (40) (41) (42) (43) (44) (45) (46) (47) (48) (49) (50) (51) (52) (53) (54) (55) (56) (57) (58) (59) (60) (61) (62) (63) (64) (65) (66) (67) (68) (69) (70) (71) (72) (73) (74) (75) (76) (77) (78) (79) (80) (81) (82) (83) (84) (85) (86) (87) (88) (89) (90) (91) (92) (93) (94) (95) (96) (97) (98) (99) (100)

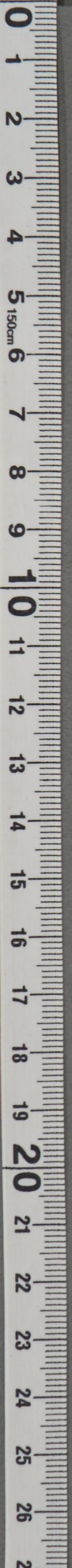


ZLR

RESTRICTED
Restricted
RETURN COPY

G-4 File Copy

G-4 File Copy



[Faint, mostly illegible text, possibly a letter or document, with two punch holes at the top.]



CONFIDENTIAL

GD P&P HCG/hv
16 Mar 49

MEMORANDUM FOR RECORD

SUBJECT: Philippine Airlines Request for Route Changes

1. References:

a. Radio from CG PHILCOM to CG FEAF, 24 Feb 49, subject as above, refers to request from Air Attache Manila regarding PAL request for route change from Manila-Okinawa-Tokyo to Manila-Hong Kong-Okinawa-Tokyo, in both directions.

b. Ourad CX 68286 from CINCFE to DA, 4 Mar 49, subject as above and M/R thereto, which states that CINCFE is in receipt of request from PAL thru CG PHILCOM for change in route. States CINCFE has no objection and requests concurrence or comments.

2. Radio for action from CS USAF to CINCFE, info to CG FEAF and CG PHILCOM, AFMAI 52224, 12 Mar 49, subject as above, states that CS USAF has no objection to PAL route change and that State Dept informally concurs. Also states that similar request by PAA and NWA to fly Tokyo-Okinawa-Hong Kong in both directions still pending before CAB.

3. It does not appear advisable to delay PAL inasmuch as it is not known when or if CAB will approve PAA and NWA request for similar route changes.

4. Proposed radio to ~~Air Attache, Amembassy Manila~~ ^{CG PHILCOM}, authorizes PAL to fly Manila-Hong Kong-Okinawa-Tokyo in both directions. Does not authorize increase in facilities at Naha nor increase in frequency of flights.

5. FEAF concurs.

6. Within established policy.

7. Completes action on G-4 Journal #79111.

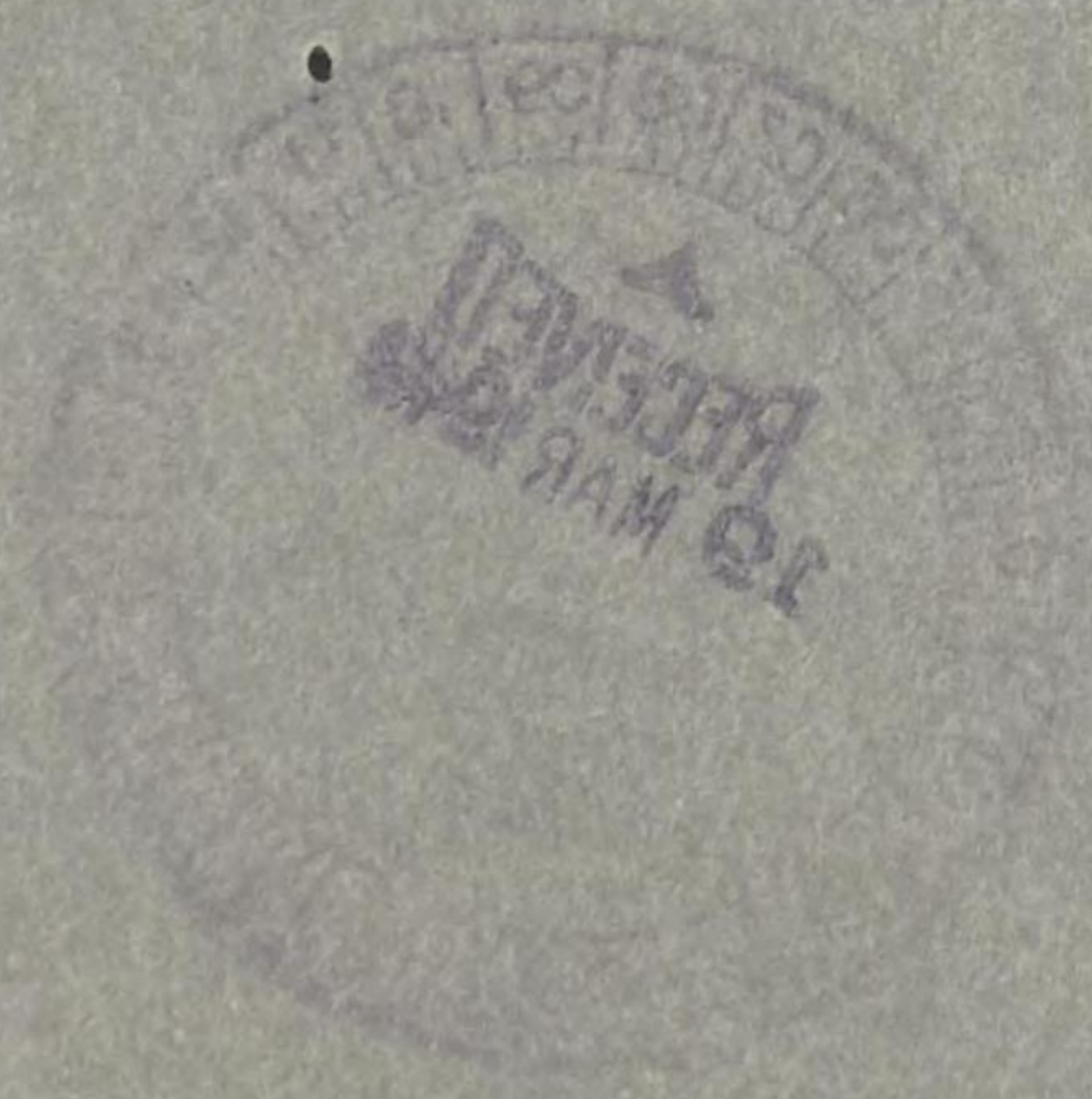
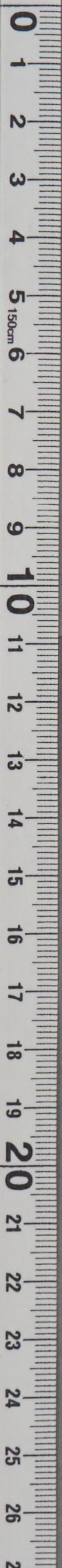
H.C.G. HCG

W.A.R. WAR

F.L.R. FLR

G-4 File Copy

CONFIDENTIAL



CONFIDENTIAL

MEMORANDUM FOR RECORD

GD P&P HOS/pv
16 Mar 49

SUBJECT: Philippine Airlines Request for Route Changes

1. References:

a. Radio from CG PHILCOM to CG WPAF, 24 Feb 49, subject as above, refers to request from Air Attache Manila regarding PAA request for route change from Manila-Okinawa-Tokyo to Manila-Hong Kong-Okinawa-Tokyo, in both directions.

b. Guard CX 68286 from CINCPAC to DA, 4 Mar 49, subject as above and M/R thereto, which states that CINCPAC is in receipt of request from PAA thru CG PHILCOM for change in route. States CINCPAC has no objection and requests concurrence or comments.

2. Radio for action from CG USAF to CINCPAC, info to CG WPAF and CG PHILCOM, AFWAL 52324, 12 Mar 49, subject as above, states that CG USAF has no objection to PAA route change and that State Dept informally concurs. Also states that similar request by PAA and NWA to fly Tokyo-Okinawa-Hong Kong in both directions still pending before CAB.

3. It does not appear advisable to delay PAA inasmuch as it is not known when or if CAB will approve PAA and NWA request for similar route changes.

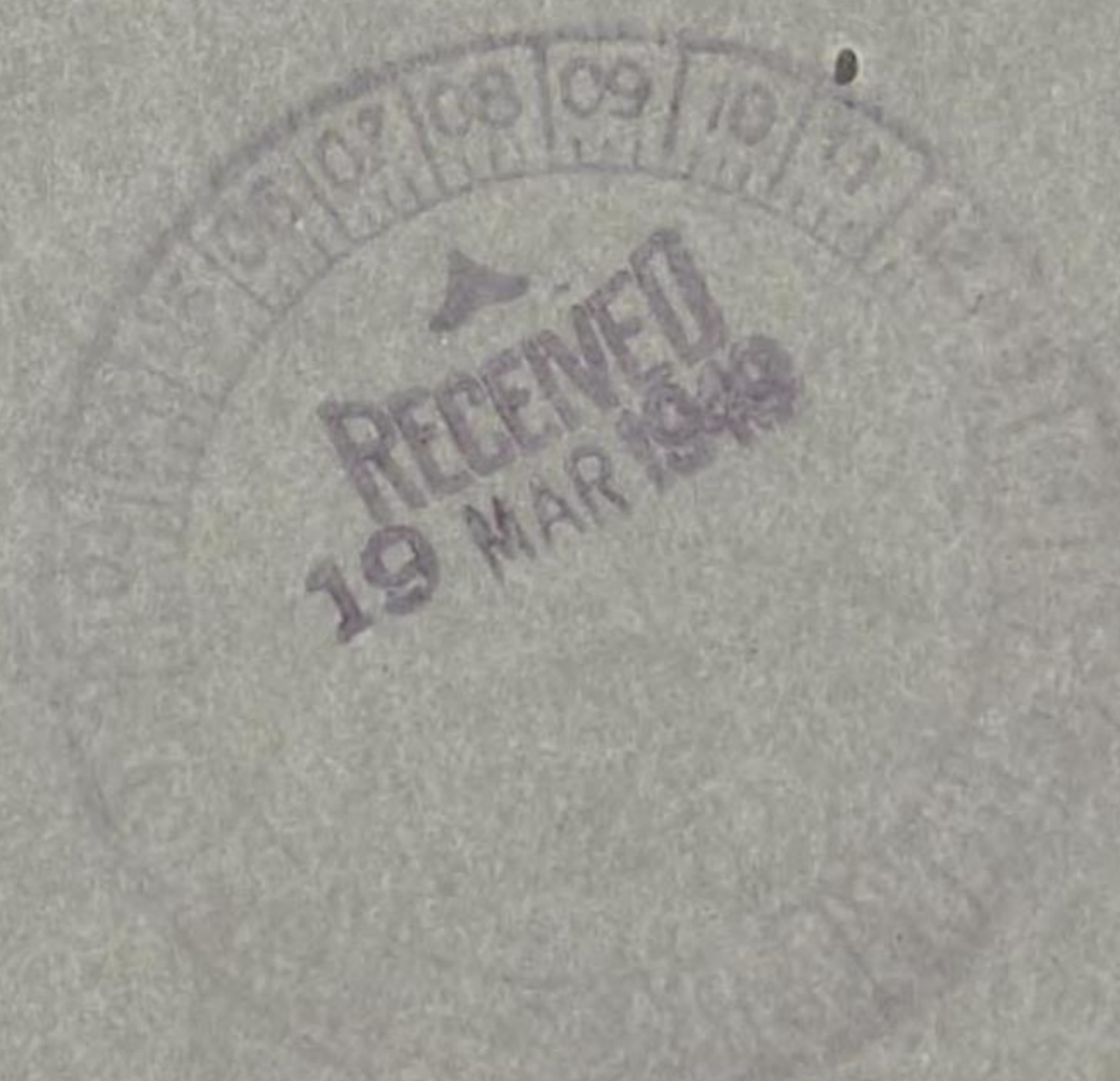
4. Proposed radio to Air Attache, Ambassador Manila, authorizes PAA to fly Manila-Hong Kong-Okinawa-Tokyo in both directions. Does not authorize increase in facilities at Naha nor increase in frequency of flights.

5. WPAF concurs.

6. Within established policy.

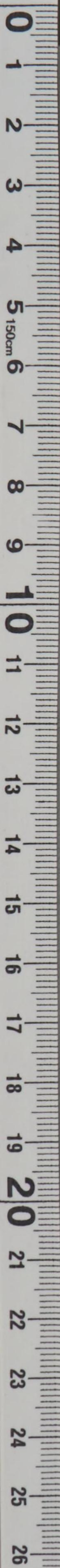
7. Completes action on G-4 Journal #9111.

H.C.G.
W.A.R.
T.L.R.



CONFIDENTIAL

G-4 File Copy



GENERAL HEADQUARTERS, FAR EAST COMMAND
ADJUTANT GENERAL'S OFFICE
RADIO AND CABLE CENTER

INCOMING MESSAGE

Confidential
ROUTINE

ACTION COPY

G-4 ROUTING		GPM
ASST. DIR.	G-4	ejh
ASST. DIR.	G-4	
EXECUTIVE		
PLANS & POLICY		<i>3PR</i>
OPERATIONS		
CONST & FAC		
TRANSPORTATION		
SUPPLY		
PETROLEUM		12 Mar 49
BUDGET		
PERSONNEL		
ADMINISTRATION		<i>A</i>

FROM : CSUSAF
 TO : CINCFE
 INFO : CG FEAF, CG PHIICOM
 NR : AFMAI 52224

This hq interposes no objection to change in Philippine Airlines route from Manila-Okinawa-Tokyo to Manila-Hong Kong-Okinawa-Tokyo in both directions. Dept of State informally concurs. Concerning PAA and NWA requests to serve Hong Kong, Civil Aeronautics Board has asked both carriers for add info and as yet cases are still pending before board. You will be advised as soon as decision is made.

NO SIG

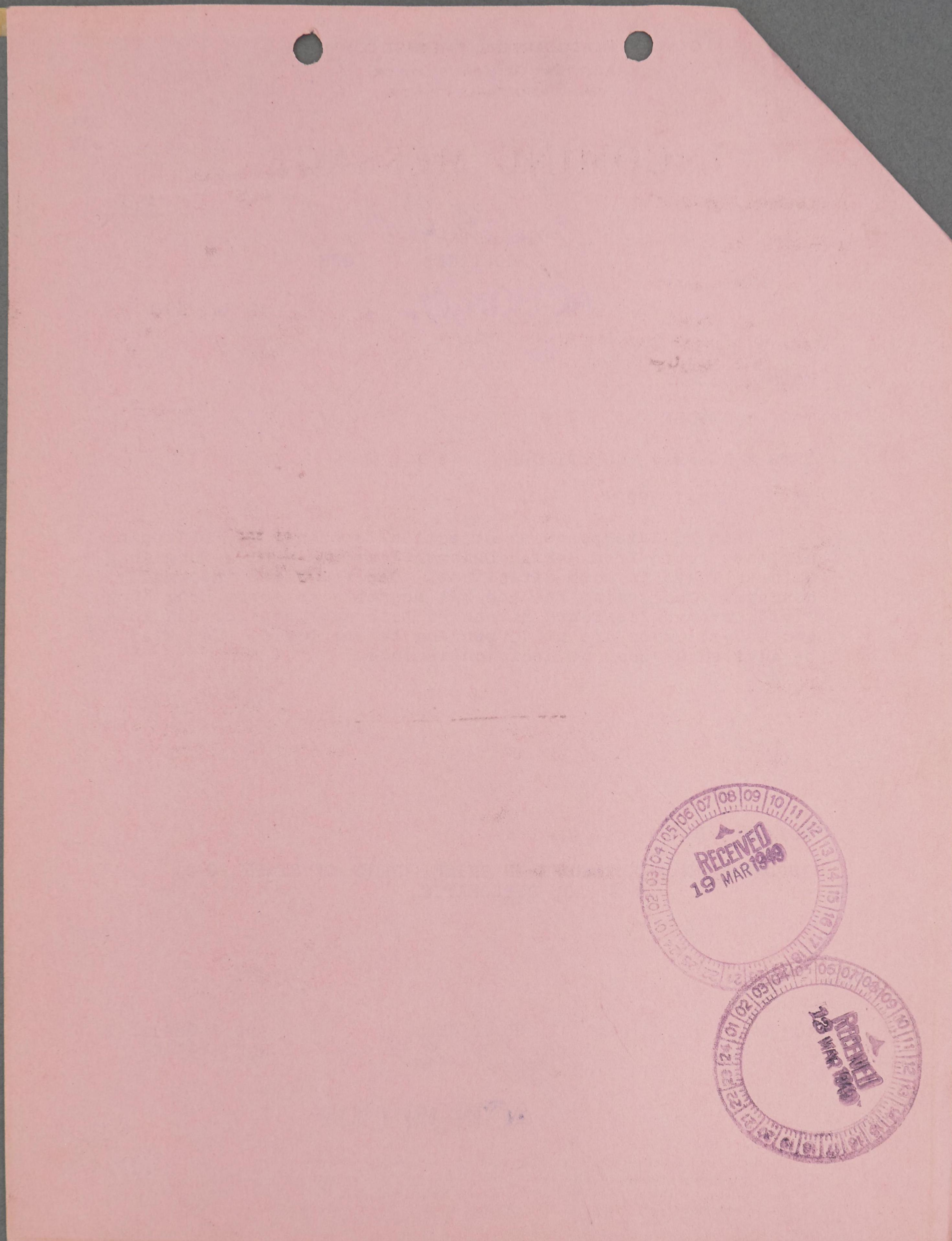
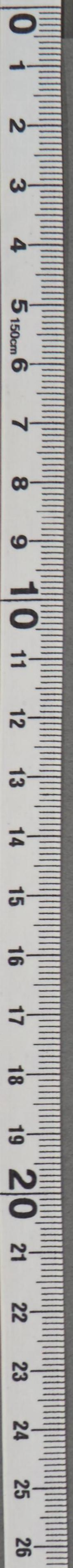
ACTION : G-4
 INFORMATION : COMMANDER IN CHIEF, CHIEF OF STAFF, G-1, G-2, AG, DIPLOMATIC

48330

ROUTINE
Confidential

TOO : 082128 Z
MCN : 94444

ACTION COPY



RECEIVED
19 MAR 1949

RECEIVED
19 MAR 1949

D R A F T

GENERAL HEADQUARTERS
FAR EAST COMMAND

OUTGOING MESSAGE

GD P&P HCG/mlw

RESTRICTED

FROM: CINCFC

TO: CG PHILCOM

INFO: US AIR ATTACHE AMEMBASSY MANILA. . . DEFERRED
 CG RYCOM. DEFERRED
 CG FEAF. COURIER

Reourad CX 68280, 4 March 1949, and CS USAF radio
 AFMAI 52224, 12 March 1949, to CINCFC, info to CG ~~RYCOM~~ ^{PHILCOM}. Authority is
 hereby granted Philippine Airlines to change present Manila-Okinawa-Tokyo
 route to Manila-Hong Kong-Okinawa-Tokyo in both directions.

repeat not
 This authority does not/allow increase in frequency of flights to
 Okinawa nor authorize increased facilities at NAHA.

Request Philippine Airlines be so advised.

OFFICIAL:

APPROVED BY:

R. M. LEVY
 Colonel, AGD
 Adjutant General

M. V. PATTON
 Colonel, GSC
 Actg. Asst. Chief of Staff, G-4

- Copies to:
- CinC
- C/S
- G-1
- G-2
- AG
- DS

0-4 DRAFT APPROVED BY 3 / n / 49

FOR FORMAL CONCURRENT HAND for

Submission to C-25

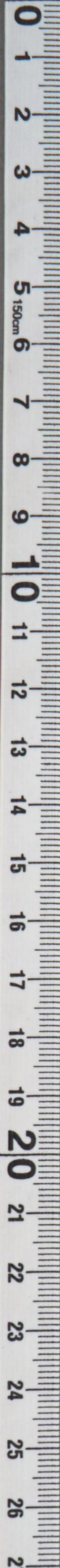
10/2/49

10/2/49

M.V.

RESTRICTED

JLR



GENERAL HEADQUARTERS
ARMY CORPS

DEPT. OF THE ARMY
WASHINGTON, D.C.

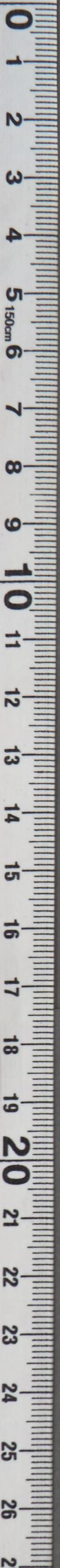
TO: THE ASSISTANT CHIEF OF STAFF
FOR PERSONNEL
ATTENTION: PERSONNEL DIVISION

FROM: THE CHIEF OF STAFF
ATTENTION: PERSONNEL DIVISION

RE: [Illegible text]

DATE: [Illegible text]





095-
Phil AL

CONFIDENTIAL
Confidential

GENERAL HEADQUARTERS
FAR EAST COMLND

OUTGOING MESSAGE

G-4 ROUTING	
A C/SIG-4	
D AC/S G-4	
EXECUTIVE	<i>[initials]</i>
PLANS & POLICY	<i>[initials]</i>
OPERATIONS	
CONST & FAC	
TRANSPORTATION	
SUPPLY	
PETROLEUM	
BUDGET	4 MAR 1949
PERSONNEL	
ADMINISTRATION	<i>[initials]</i>

GD P&P HCG/ejs

041201

FROM: CINCFE

TO : CG, PHILCOM ROUTINE

INFO: AIR ATTACHE MANILA . . . ROUTINE

CG, FEAF COURIER

CG, RYCOM ROUTINE

CIX 68280

REURAD TO FOX EASY ABLE FOX DATED TWO TWO FEBRUARY
ONE NINE FOUR NINE PD CHANGE OF ROUTE MANILA DASH OKINAWA DASH TOKYO TO
MANILA DASH HONGKONG DASH OKINAWA DASH TOKYO IN BOTH DIRECTIONS HAS
BEEN REFERRED TO DEPARTMENT OF ARMY WITH STATEMENT NO OBJECTION HERE PD
YOU WILL BE ADVISED SOONEST ACTION TAKEN PD MEANWHILE CHANGE OF ROUTE
AS REQUESTED NOT REPEAT NOT AUTHORIZED

OFFICIAL:

APPROVED:

R. M. LEVY
Colonel, AGD
Adjutant General

[Signature]
M. V. PATTON
Colonel, GSC
Acting Assistant Chief of Staff, G-4

Copies to:
C-in-C
C/S
G-1
DS

DISPATCHED
4 MAR 1949
G-4 GHO

Handling of this communication is of the same classification as the original message. This communication has been authorized for dissemination in accordance with the provisions of AR 600-10, 53-D (1) (2) (3) (4), 53-E, 53-A, (1) (2) 1946

91203

CONFIDENTIAL
Confidential

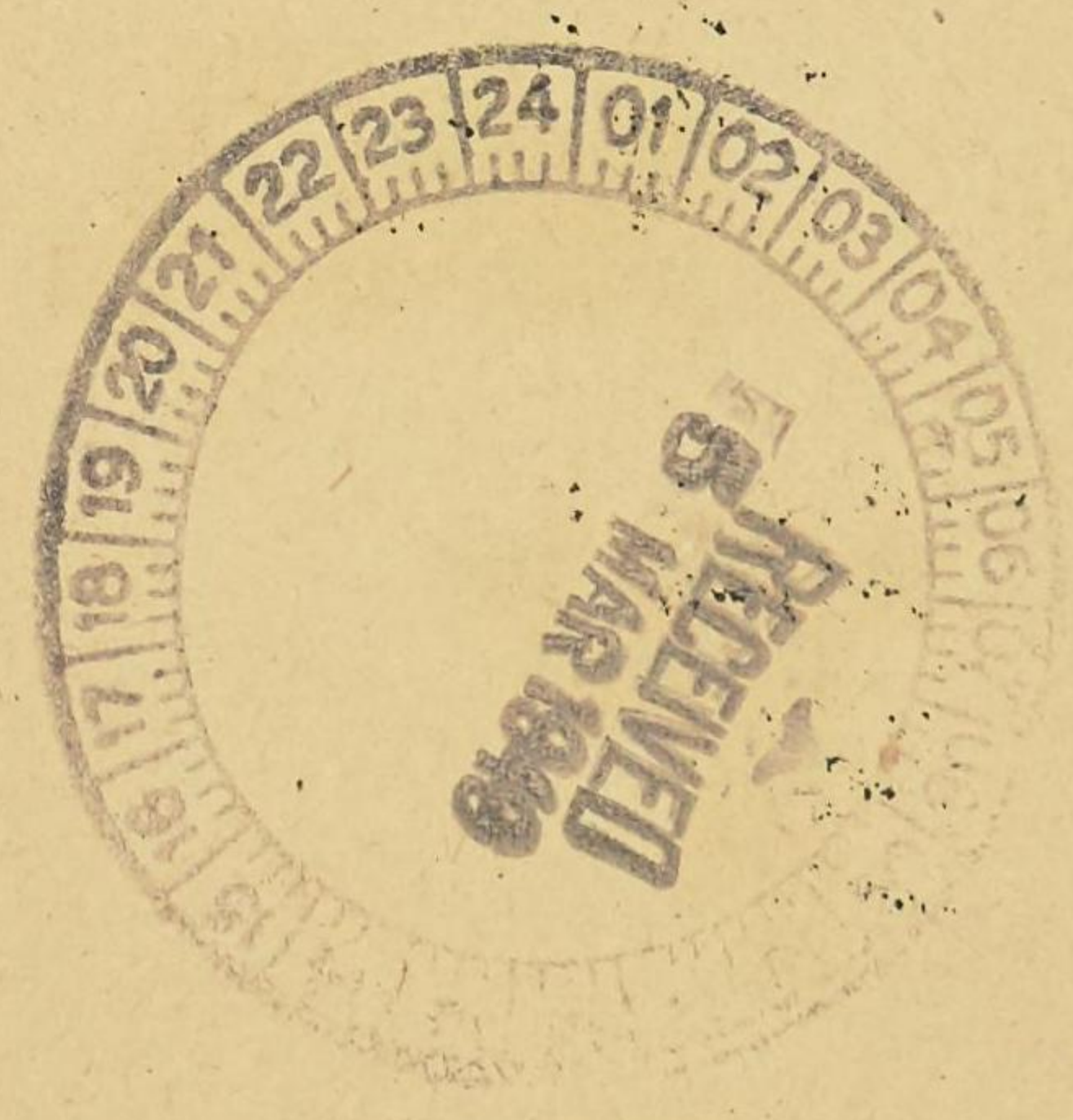
RETURN COPY

G-4 File Copy

G-4 File Copy



FOIPA



CONFIDENTIAL

GD P&P HCG/bs/hv
1 March 1949

MEMORANDUM FOR RECORD

SUBJECT: Philippine Airlines Request for Route Change

1. Radio from CG PHILCOM to CG FEAF dated 22 Feb 49 forwards request from PAL for change in present route of Manila-Okinawa-Tokyo to Manila-Hong Kong-Okinawa-Tokyo.
2. Memo for G-4 GHQ FEC from AC/S A-3 FEAF interposes no objection to change in PAL route to include Hong Kong.
3. There is no objection to proposed change in route as there will be no increase in landings or increase of facilities required at Okinawa; however, permission for such change in route should not be granted PAL prior to PAA and NWA.
4. a. Proposed radio to DA requests concurrence or comments on proposed PAL change in route and requests that final answer to ourad CX 67142 be expedited as the change in route requested by PAL parallels route requested by PAA and NWA.
b. Proposed radio from CINCFE to CG PHILCOM states that change of route requested by PAL has been referred to DA and that CG PHILCOM would be advised. Meanwhile, change of PAL route not authorized.
5. Within established policy. (Gen. Thatcher A/CS A-3 FEAF concurs)
6. Completes action on G-4 Journal #78203.

H. C. G. HCG

W. A. R. WAR

F. L. R. FLR

CONFIDENTIAL

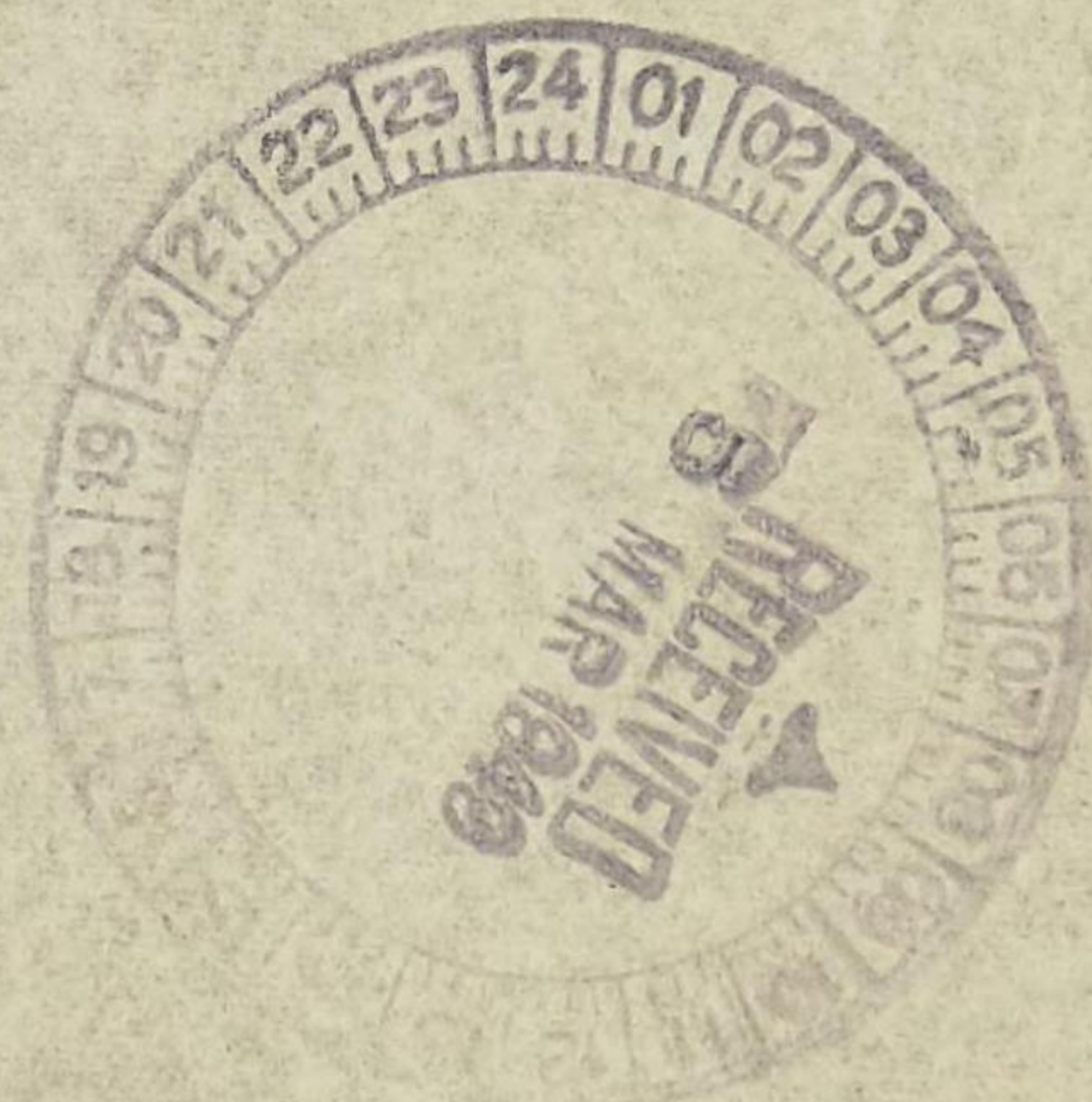
GD TRS WCC/pa/rv
1 March 1949

MEMORANDUM FOR RECORD

SUBJECT: Philippine Airline Request for Route Change

1. Radio from CG PHILCOM to CG TRAF dated 22 Feb 49 forwards request from PAL for change in present route of Manila-Okinawa-Tokyo to Manila-Hong Kong-Okinawa-Tokyo.
2. Memo for G-4 GPO TRC from AAGS A-3 TRAF interposes no objection to change in PAL route to include Hong Kong.
3. There is no objection to proposed change in route as there will be no increase in landings or increase of facilities required at Okinawa; however, permission for such change in route should not be granted until prior to PAA and WAA.
4. Proposed radio to DA requests concurrence or comments on proposed PAL change in route and requests that final answer be issued CX SVIAS as expeditious as the change in route requested by PAL permits route requested by PAA and WAA.
5. Proposed radio from CINCPAC to CG PHILCOM states that change of route requested by PAL has been referred to DA and that CG PHILCOM would be advised. Meanwhile, change of PAL route not authorized.
6. Within established policy. (See Attached A/C 2 A-3 TRAF context)
7. Complete action on G-4 Journal W8303.

H. C. G.
 W. A. B.
 F. J. B.



DECLASSIFIED
Authority NND975029

SECRET

SECRET

