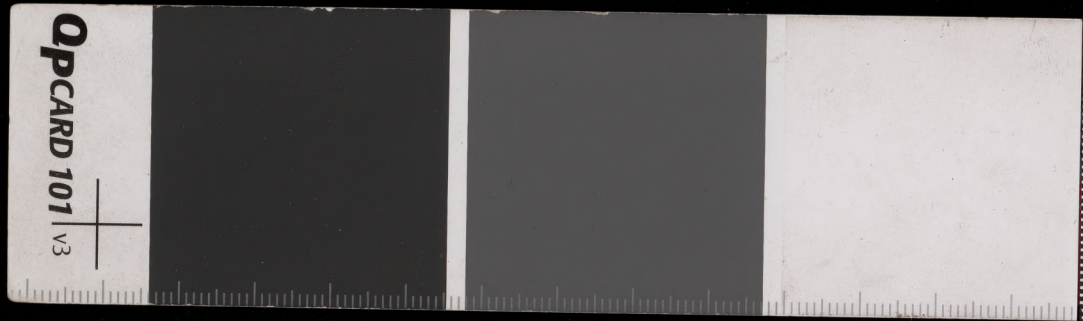


Handwritten text on a palm leaf manuscript strip, written in a South Indian script (likely Grantha or Tamil). The text is arranged in two lines. The right line contains a large, stylized character that appears to be '3' or '300'. The left line contains a longer sequence of characters, including a prominent '3' at the beginning. The leaf shows signs of age and wear, with a small hole visible near the center.



Handwritten Burmese script on a palm leaf manuscript. The text is arranged in approximately 12 horizontal lines across the length of the leaf. The script is a traditional form of Burmese, likely used for religious or historical records. The leaf shows signs of age, including a prominent hole and some staining.

Handwritten text in a cursive script on a palm leaf manuscript. The text is arranged in approximately four horizontal lines across the length of the leaf. The script is dense and characteristic of traditional Southeast Asian writing systems. There are two prominent dark spots on the leaf, one near the center and another towards the right side, which may be ink blots or natural imperfections in the leaf material. The leaf shows signs of age and wear, with some discoloration and a slightly uneven texture.

၈၂၁

Handwritten Burmese script on a palm leaf manuscript. The text is arranged in approximately five horizontal lines across the length of the leaf. The script is a traditional form of Burmese, likely used for religious or historical records. The leaf shows signs of age, including some staining and a small hole.

Handwritten Burmese script on a palm leaf manuscript. The text is arranged in approximately five horizontal lines, written from left to right. The script is a traditional form of Burmese, likely used for religious or historical records. The leaf shows signs of age, including some staining and two distinct circular holes, possibly from insect damage or for binding purposes. The characters are finely etched into the surface of the dried leaf.

Handwritten Burmese script on a palm leaf manuscript. The text is arranged in approximately five horizontal lines. The script is finely etched into the surface of the leaf. There are two distinct circular holes along the length of the leaf, which were traditionally used for threading a cord to bind multiple leaves together into a book format. The leaf shows signs of age, including some discoloration and wear at the edges.

ဇာ

Handwritten text in an ancient script, likely Burmese, inscribed on a palm leaf. The text is arranged in approximately five horizontal lines across the length of the leaf. The script is finely etched into the surface of the dried leaf. Two circular holes are visible, which were traditionally used for threading a cord to bind multiple leaves together into a book format. The leaf shows signs of age, including some staining and wear at the edges.

Handwritten Burmese script on a palm leaf manuscript. The text is arranged in approximately 10 horizontal lines across the length of the leaf. The script is a traditional form of Burmese, likely used for religious or historical records. The leaf shows signs of age, including a small hole and some staining.

Handwritten Burmese script on a palm leaf manuscript. The text is arranged in approximately five horizontal lines. The script is a traditional form of Burmese writing, likely used for religious or historical records. The leaf shows signs of age, including a prominent hole in the middle and some staining at the right end.

35

Handwritten text in a cursive script, likely a form of Indic script, covering the majority of the palm leaf. The text is organized into several horizontal lines, with some characters appearing to be in a different script or dialect than the main body of text. The leaf shows signs of age and wear, including two distinct circular holes.

Handwritten text in a cursive script, likely a form of Indic script, covering the entire length of the palm leaf. The text is arranged in approximately five horizontal lines. The script is dense and continuous, with some variations in line thickness and spacing. There are two small dark spots on the leaf, one near the center and one towards the right end. The leaf shows signs of age and wear, with some discoloration and a slightly uneven texture.

၆၆၁

Handwritten Burmese script on a palm leaf manuscript, consisting of approximately 10 lines of text.

၅၅၆

Handwritten Burmese script on a palm leaf manuscript. The text is arranged in five horizontal lines, written from left to right. The script is a traditional form of Burmese, likely used for religious or historical records. There are two distinct circular marks on the leaf, one near the center and another towards the right side. The leaf shows signs of age, including some staining and wear at the edges.

Handwritten text in a cursive script, likely a form of Burmese or Thai script, occupying the left portion of the palm-leaf manuscript. The text is arranged in approximately five horizontal lines.

Handwritten text in a cursive script, likely a form of Burmese or Thai script, occupying the right portion of the palm-leaf manuscript. The text is arranged in approximately five horizontal lines, continuing from the left side.

Handwritten Burmese script on a palm leaf manuscript. The text is arranged in approximately five horizontal lines, written from right to left. The script is a traditional form of Burmese, likely used for religious or historical records. The leaf shows signs of age, including a small hole and some staining.

॥

Handwritten text in a cursive script, likely a form of Indic script, covering the majority of the palm leaf's surface.

Handwritten text in a cursive script, likely a form of Burmese or a related Southeast Asian script, inscribed on a palm leaf. The text is arranged in approximately five horizontal lines across the length of the leaf. The script is dense and characteristic of traditional Southeast Asian manuscripts. There are two distinct circular holes visible on the leaf, which were used for threading a cord to bind multiple leaves together into a book format. The leaf shows signs of age, including some staining and wear at the edges.

Handwritten Burmese script on a palm leaf manuscript. The text is arranged in approximately four horizontal lines, written in a cursive style. The leaf shows signs of age, including discoloration and some wear at the ends. The script is densely packed and covers most of the length of the leaf.

Handwritten text in an ancient script, likely Tamil, inscribed on a palm leaf. The text is arranged in approximately 10 horizontal lines across the length of the leaf. The script is finely etched into the surface of the dried leaf. The leaf shows signs of age, including a small dark hole near the center and some discoloration at the edges.

Handwritten text in a cursive script on a palm leaf manuscript. The text is arranged in approximately six horizontal lines across the length of the leaf. The script is dense and characteristic of traditional Southeast Asian writing systems. There are some faint markings and a small dark spot on the leaf, possibly from a hole or insect damage.

၁၁၅

Handwritten Burmese script on a palm leaf manuscript. The text is arranged in approximately five horizontal lines across the length of the leaf. The script is a traditional form of Burmese, likely used for religious or historical records. The leaf shows signs of age, including two distinct circular holes and some surface wear.

Handwritten text in a cursive script on a palm leaf manuscript. The text is arranged in approximately four horizontal lines across the length of the leaf. The script is dense and characteristic of traditional Southeast Asian writing systems. There are two small dark circular marks on the leaf, one near the center and one towards the right side.

၁၁

Handwritten Burmese script on a palm leaf manuscript. The text is arranged in approximately five horizontal lines. The script is a traditional form of Burmese, likely used for religious or historical records. The characters are finely etched into the surface of the dried leaf. There are some dark spots and irregularities on the leaf, possibly due to age or environmental factors. The overall appearance is that of an ancient document.

အဘယျသုတ္တံ



အဘယျသုတ္တံ
အဘယျသုတ္တံ
အဘယျသုတ္တံ

၅၃



အဘယျသုတ္တံ