

Photinia Mairei Lévl.
Maire 1911 (isotype.) 云南



Photinia Maximowiczii Decaisne
Wils. 8243 日本



Photinia melanostigma Hance
B. C. Henry in herb. Hance. 21691
(type) 广东北江



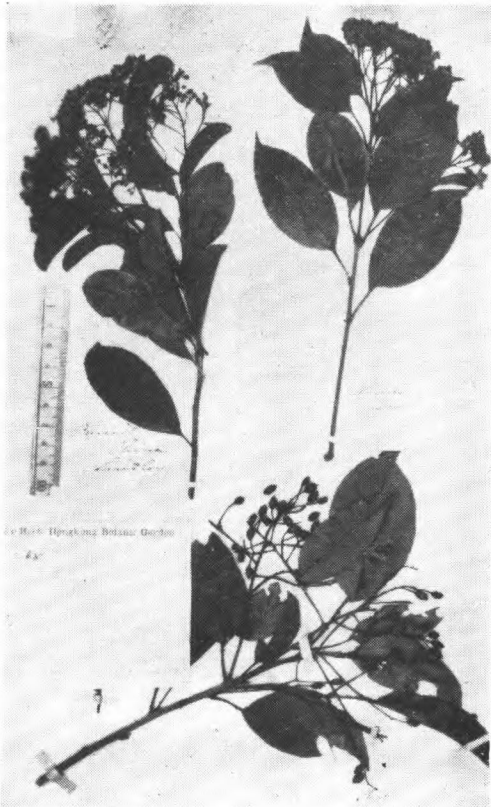
Photinia Morii Hay
U. Mori 无号 (isotype.) Tonkurankei,
台湾



Photinia parvifolia Schneider.
Wils. 1001 湖北巴东



Photinia prionophylla (Fr.) Schneider
Delavay 3545 (cotype?) 云南



Photinia prunifolia (Hook. et Arn.)
Lindl.
Ford 65 广东, Beechey (type) 中国



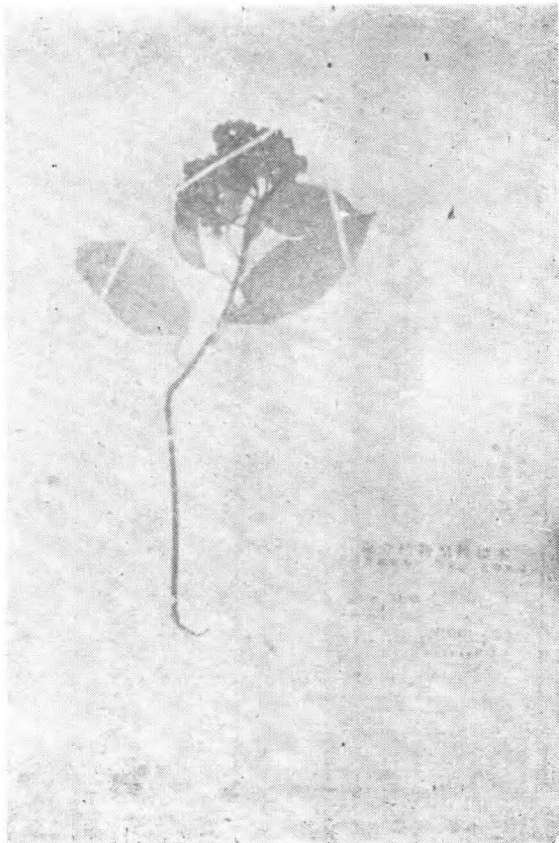
Photinia prunifolia Lindl.
Ex herb. Benth.



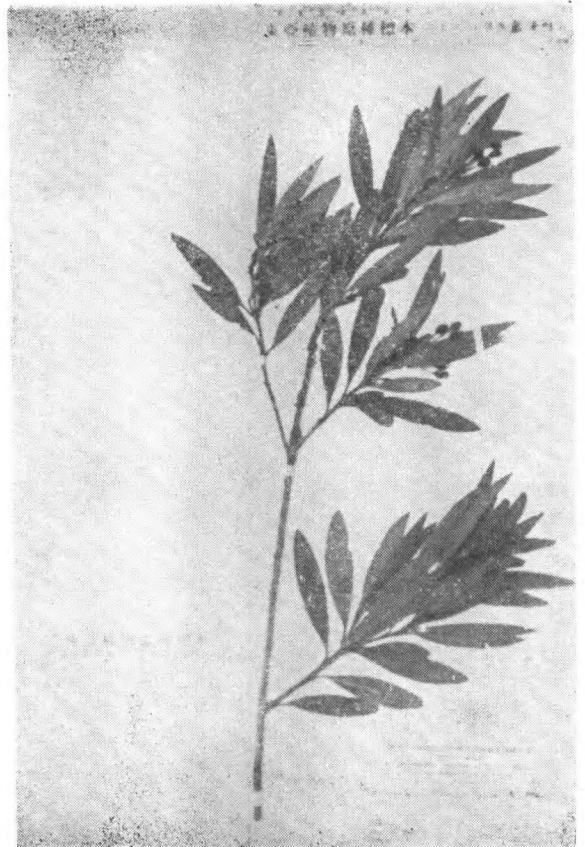
Photinia pustulata Lindl.
Parkes (type) 中国



Photinia Schneideriana Rehd et Wils.
Wils. 476 (type) 湖北长阳



Photinia serrulata var. *congestiflora*
Card.
Delavay 1118 (syntype) 云南大理大坪子



Photinia stenophylla H.-M.
Tsiang 6374 (isotype.) 贵州



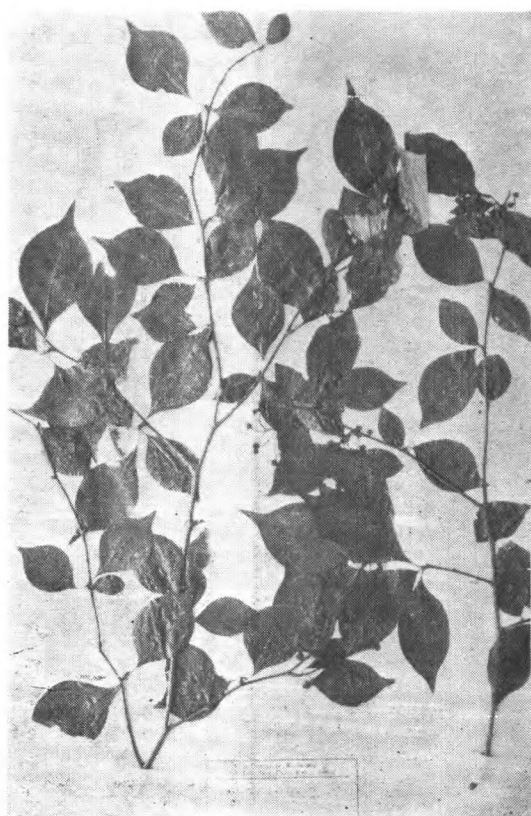
Photinia subumbellata Rehd. et Wils.
Henry 6370 (paratype) 湖北西部



Photinia taiwanensis Hay.
Faurie 80 台湾



Photinia Tsaii Rehd.
Tsai 54959 (type) 云南

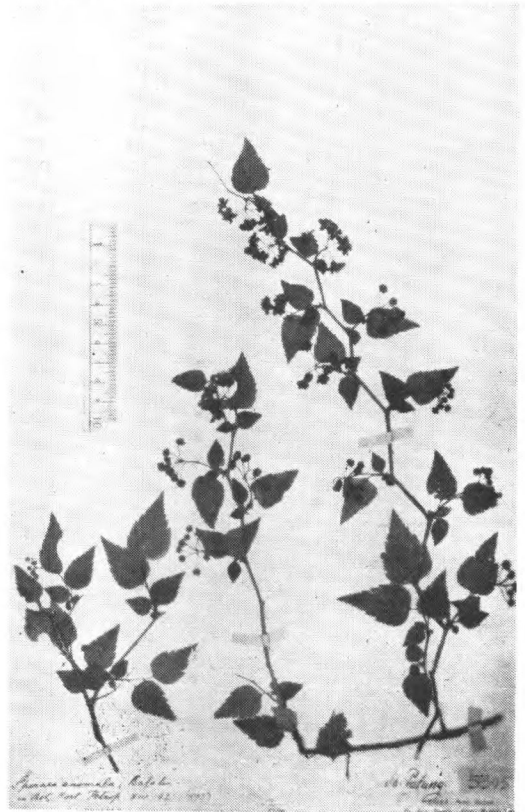


Photinia villosa (Thbg.) DC.
Thbg. (type) 日本



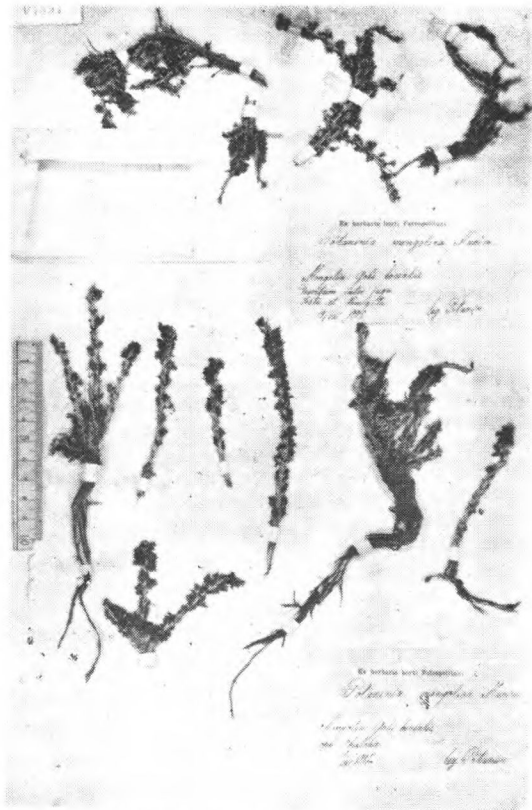
Photinia villosa DC. var. *Maximowicziana* (Levl.) Rehd.
 Taquet 1456 (cotype.) 朝鮮

风箱果屬 *Physocarpus Maxim.*



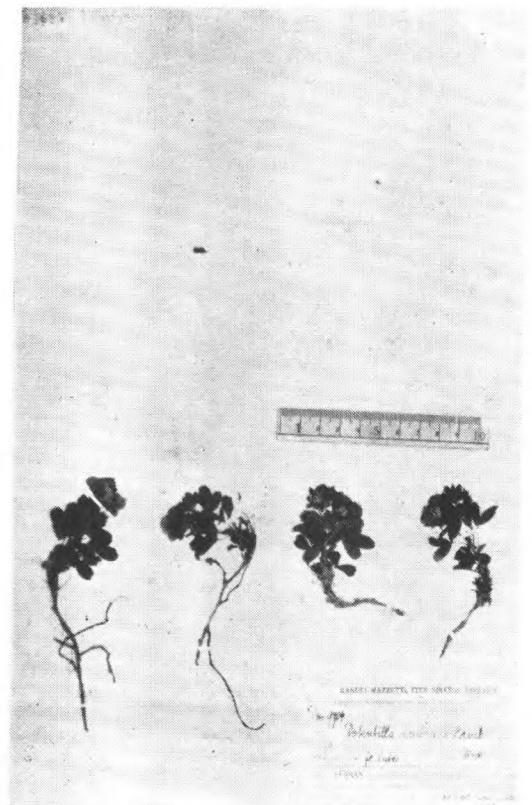
Physocarpus anomala (Batal.) Pritz.
 Henry 5305 湖北巴东

包大宁屬 *Potaninia Maxim.*



Potaninia mongolica Maxim.
 Potanin (cotype.)

委陵菜屬 *Potentilla Linn.*



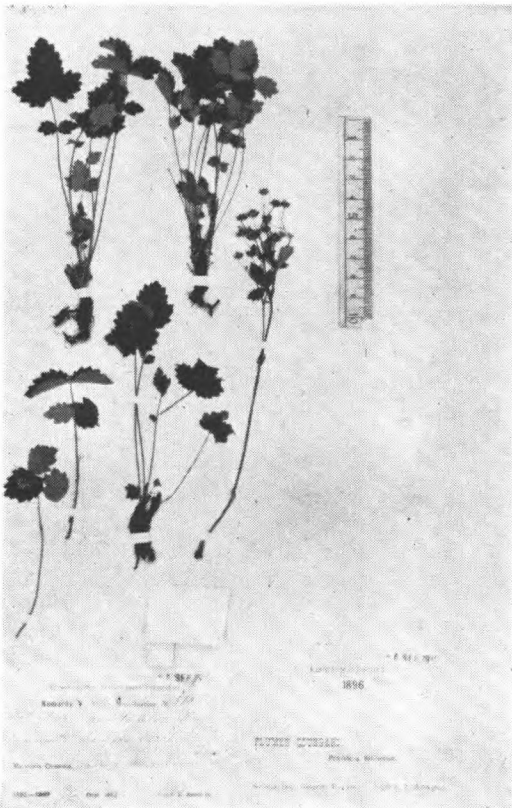
Potentilla ambigua Camb.
 H.-M. 9904 云南菖蒲桶貢山



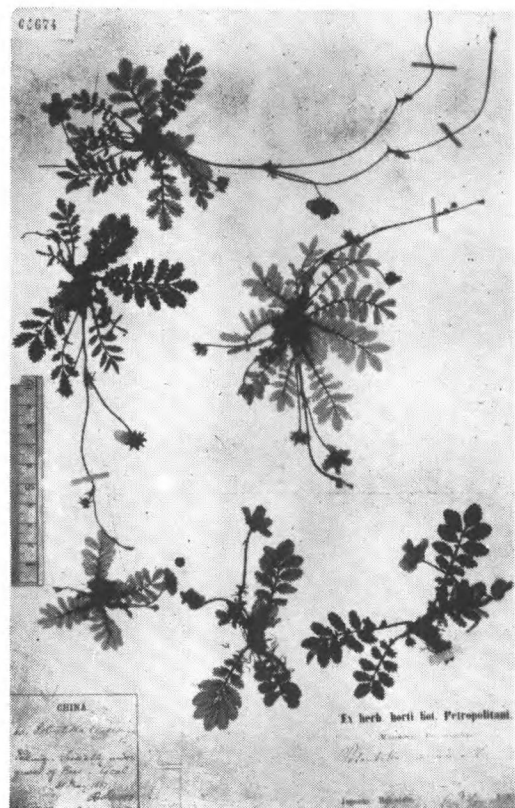
Potentilla amurensis Maxim.
Maxim. in herb. Hance 13184 黑龙江



Potentilla viscosa macrophylla
V. Komarov 884. 东北牡丹江宁古塔



Potentilla ancistrifolia Bge.
V. Komarov 880 吉林



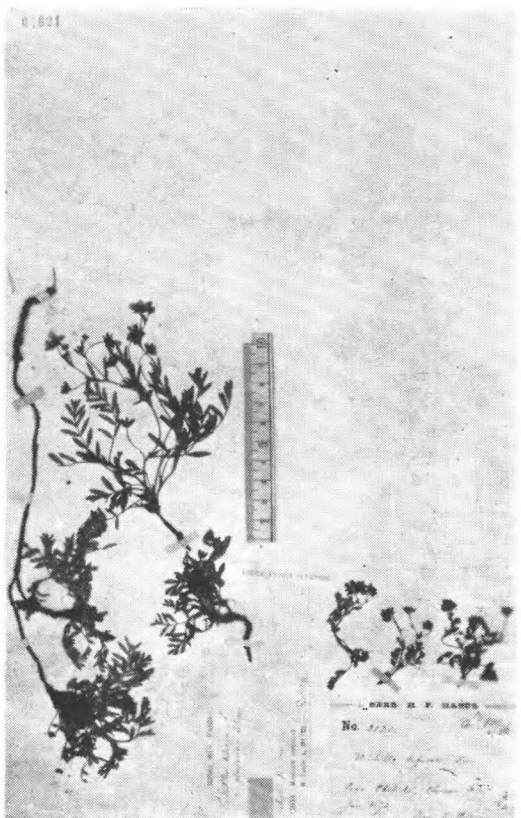
Potentilla anserina L.
Hancock 60 北京



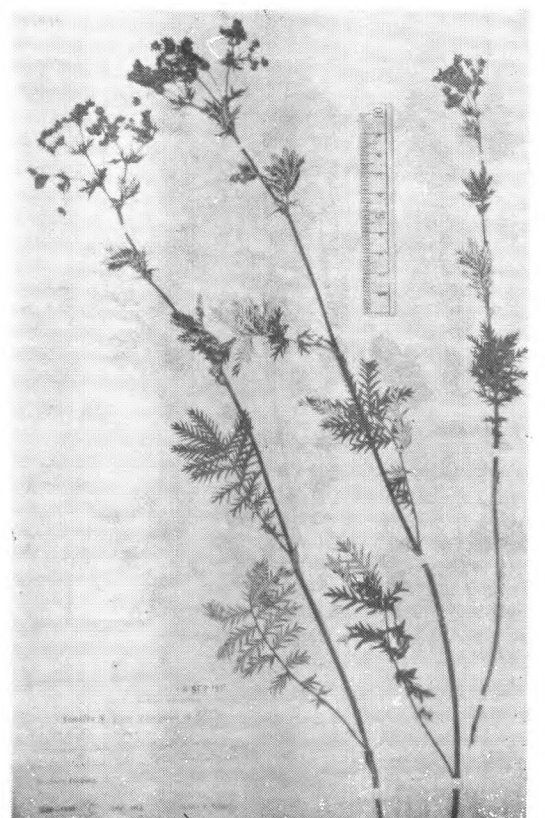
Potentilla articulata Fr.
Rock 4949 云南



Potentilla biflora Willd.
Rock 13006 甘肃



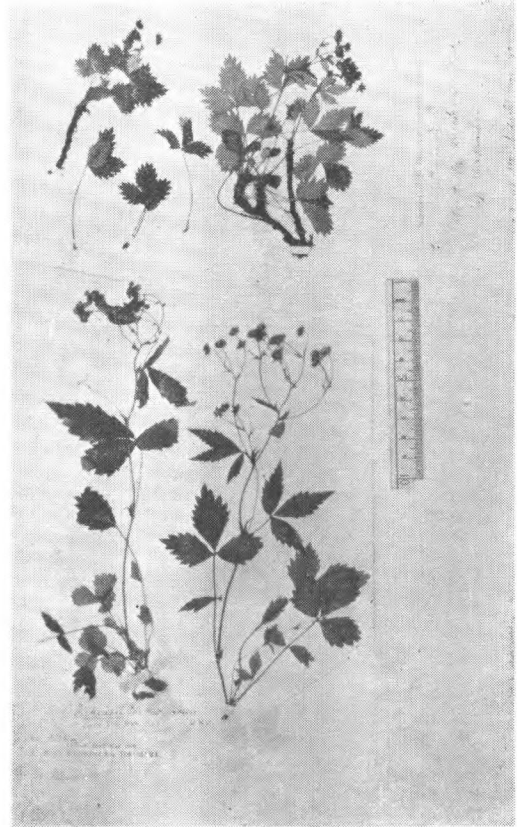
Potentilla bifurca L.
J. Pierson in Herb. Hance 2120 河北
David 1750 热河



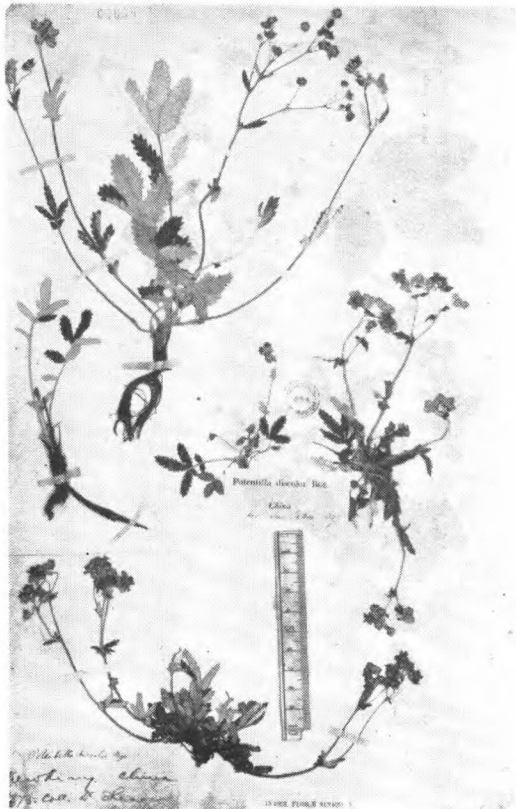
Potentilla chinensis Ser.
V. Komarov 885 东北鴨綠江



Potentilla Cryptotaeniae Maxim.
Farges 1420 四川城口



Potentilla Dickinsii Fr. et Sav.
F. V. Dickins (cotype) 日本横浜



Potentilla discolor Bge.
Bge (isotype.) 中国北部, David 1757 热河
Shearer 江西九江



Potentilla eriocarpa Wall. var. *tsaron-*
gensis W. E. Evans.
Forr. 22101 西康木里东南



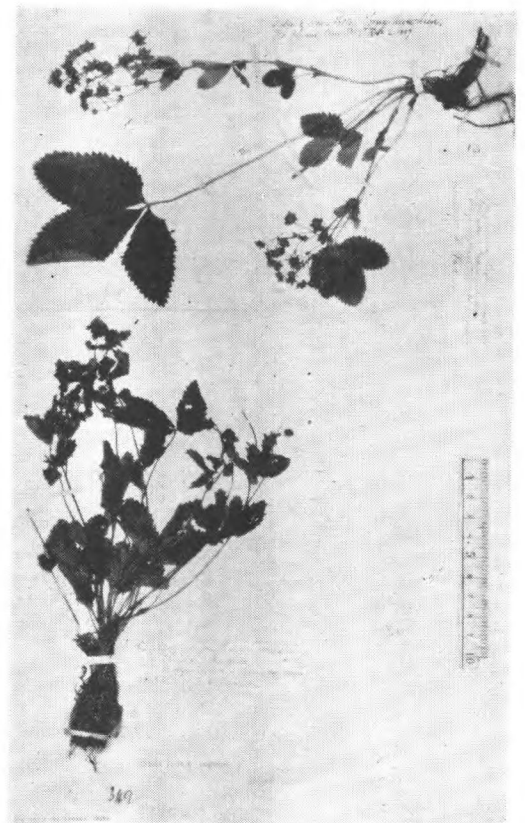
Potentilla flagellaris Willd.
Birnie (1861) 黄海大連灣



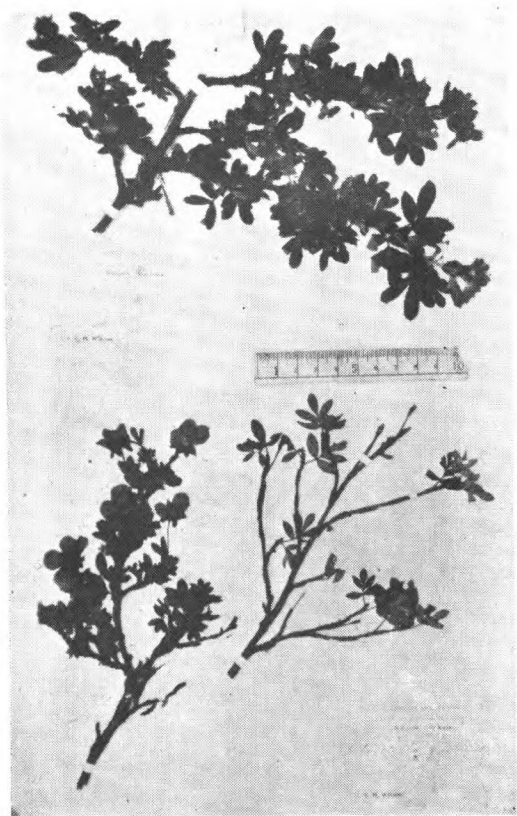
Potentilla Forrestii W. W. Sm.
Forr. (type) 云南



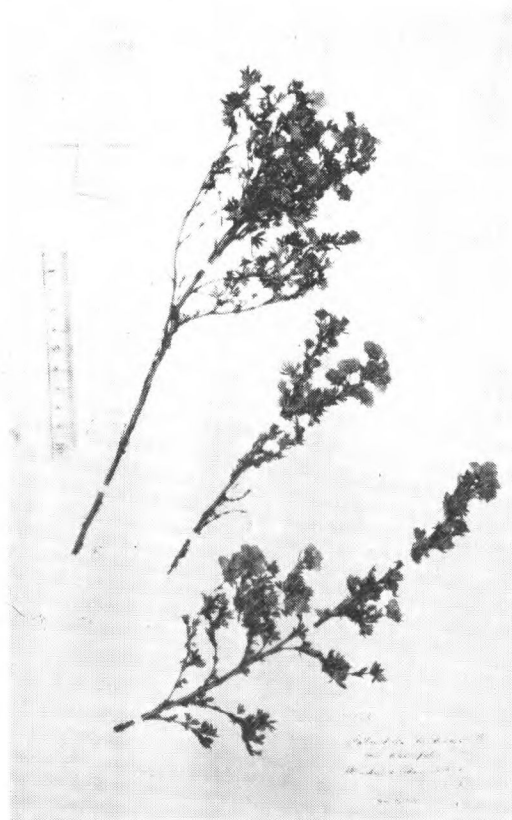
Potentilla fragarioides L.
Bullock 207 北京 Maries 江苏鎮江



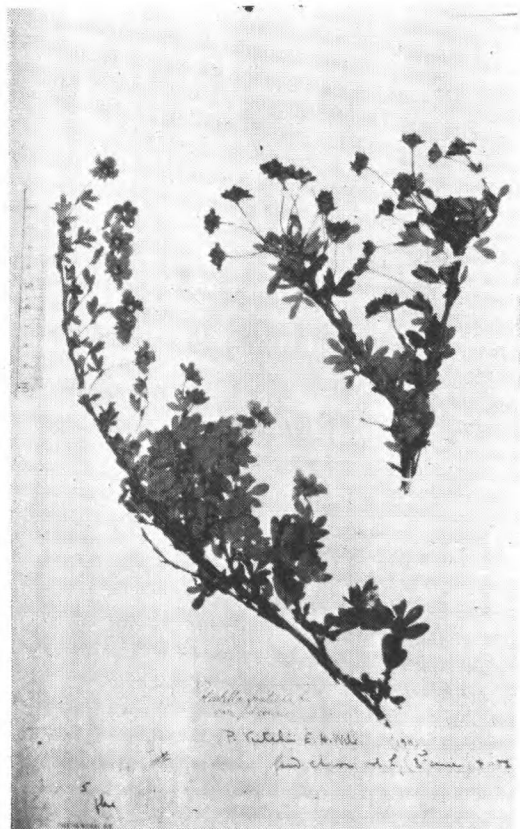
Potentilla Freyniana Bornmuller
John Ross 13 辽宁瀋陽, Henry 349.
湖北宜昌



Potentilla fruticosa L.
Wils. 1213, 3175 四川穆坪



Potentilla fruticosa L. var. *parvifolia*
(Fisch. apud Lehmann) Wolf.
W. Purdom 821 甘肃岷州



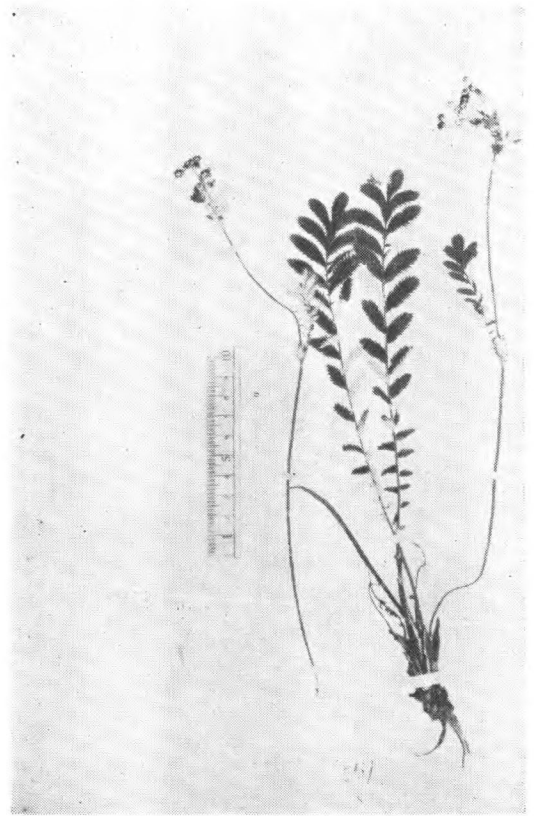
Potentilla fruticosa L. var. *Veitchii*
(Wils.) Bean.
Wils. (Veitch) 2187 (type) 湖北房县



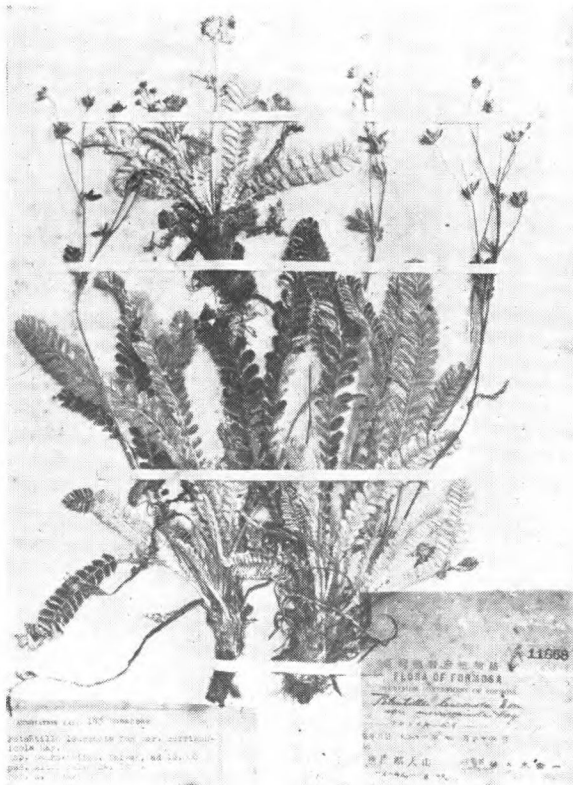
Potentilla hypargyrea H.-M.
H.-M. 9679 (type) 云南澜沧江与怒江



Potentilla Kleiniana Wight et Arn.
Delavay 880 云南大坪子, J. Bisset 日本



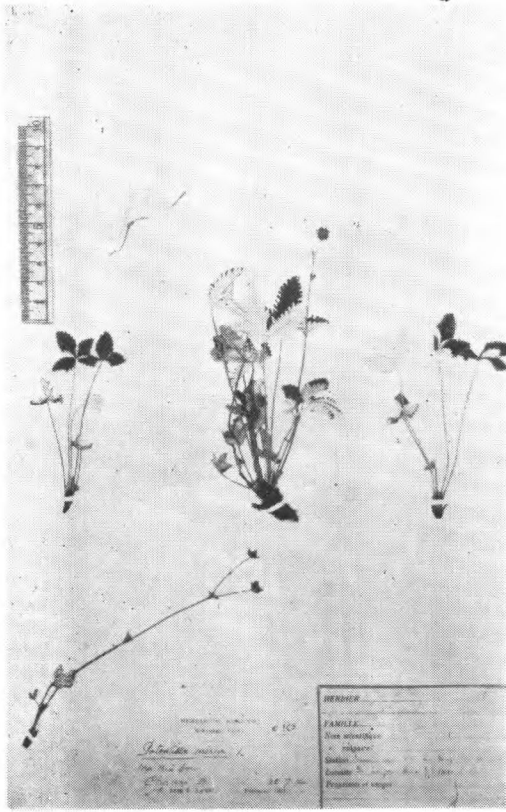
Potentilla leuconota D. Don.
Faber 557 四川峨眉



Potentilla leuconota Don var. *morrisonicola* Hay.
Nanko-taizan, 台湾



Potentilla microphylla Don var. *glabriuscula* Wall.
H.-M. 9685. 云南



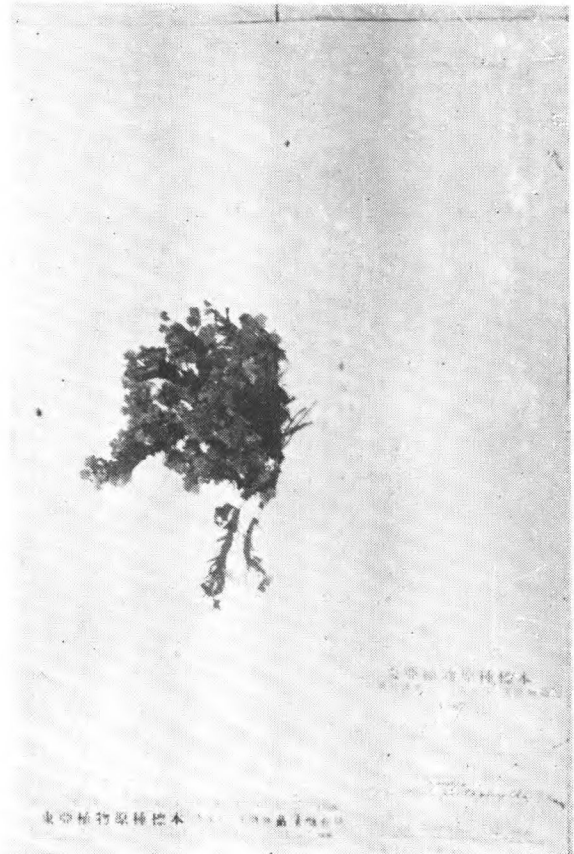
Potentilla nivea L.
Licent 695 山西北部馬家坡(鋪)



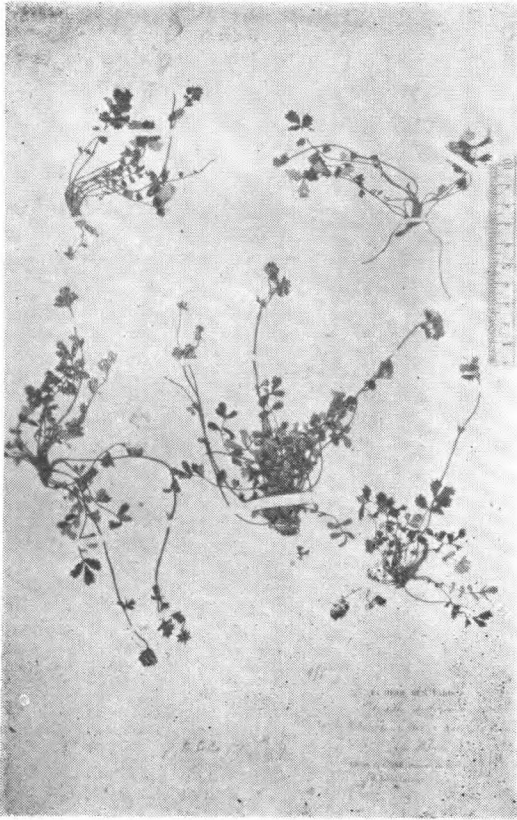
Potentilla paradoxa Nuttall
Bullock 22 河北滄县, Shearer 江西九江,
Bretschneider 261-263. 北京



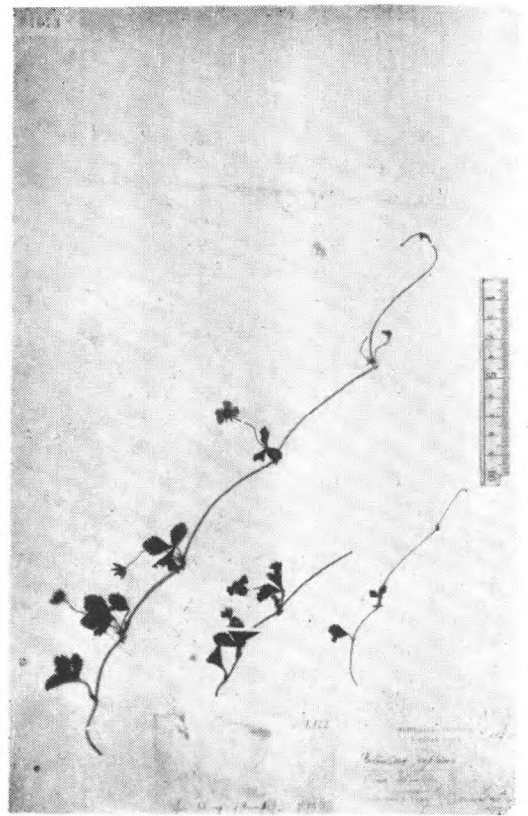
Potentilla peduncularis Don.
Delavay 云南



Potentilla pentaphylla J. Krons.
Rock 17783 四川



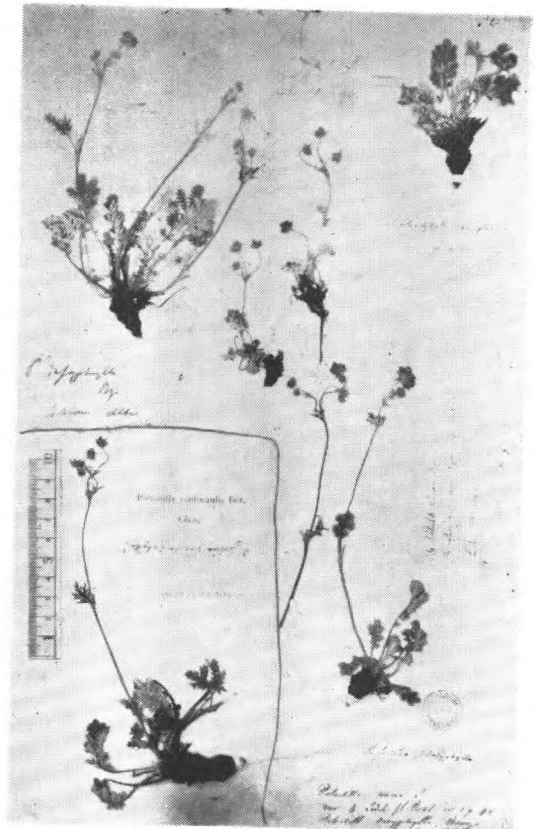
Potentilla poteroides Fr.
Delavay 478 (cotype) 四川夔州府



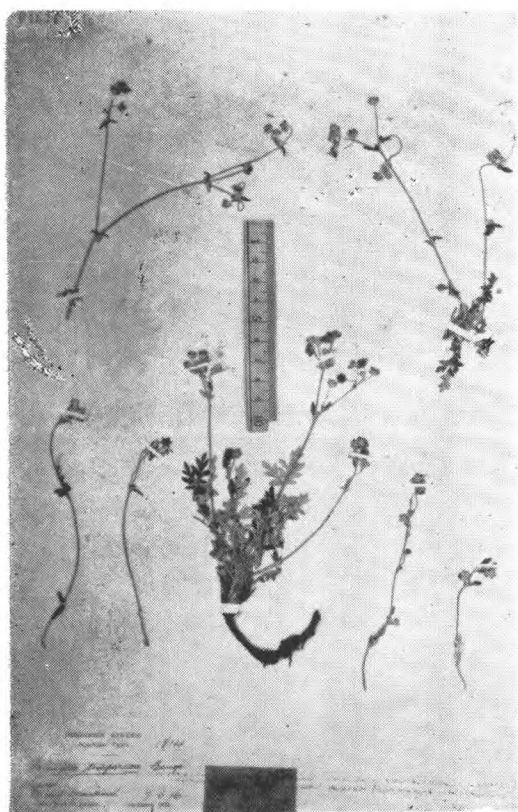
Potentilla reptans L.
Licent 1122 河南北部小庄



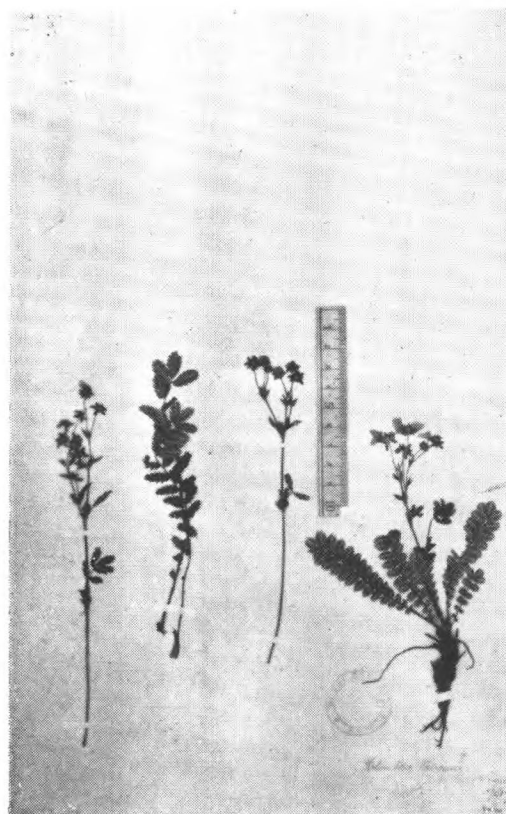
Potentilla rhytidocarpa Card.
Delavay, (isotype) 云南



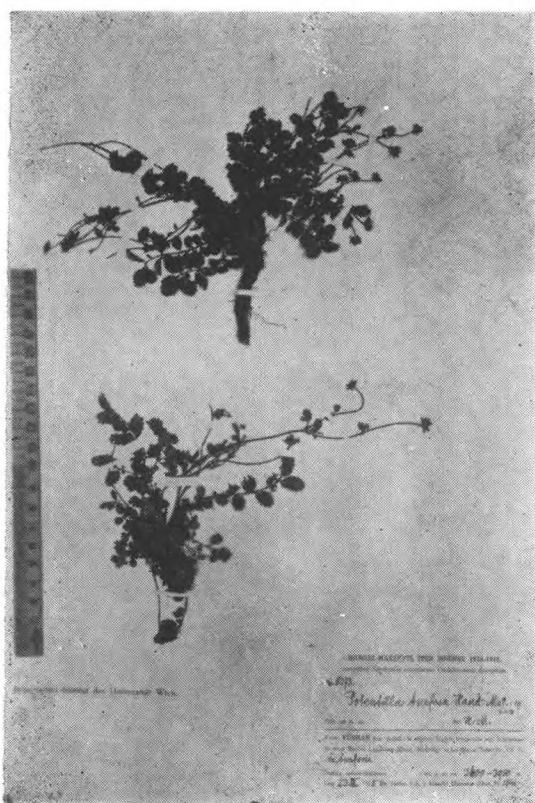
Potentilla sericea L.
Bunge. 阿尔泰



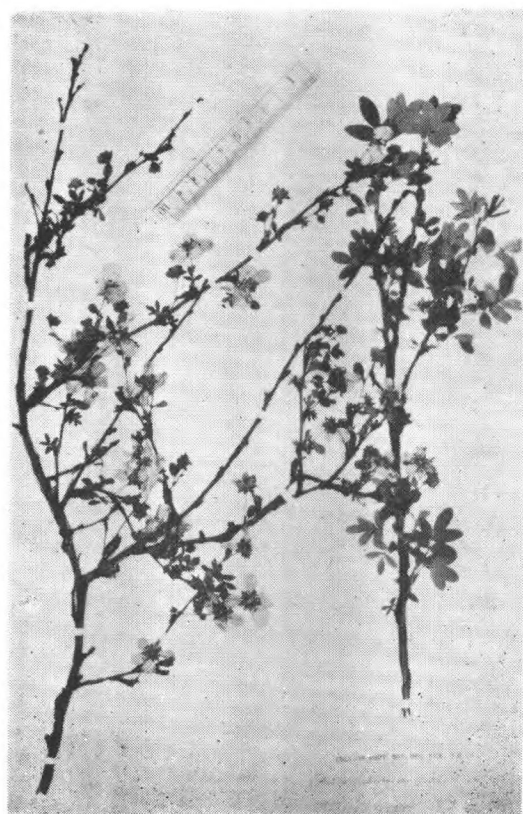
Potentilla sischanensis Bge.
Bge. (cotype) 北京西山



Potentilla taliensis W. W. Sm.
Forr. 7017 (cotype) 云南



Potentilla turtosa H.-M.
H.-M. 8373 (paratype.) 云南澜沧江、怒江



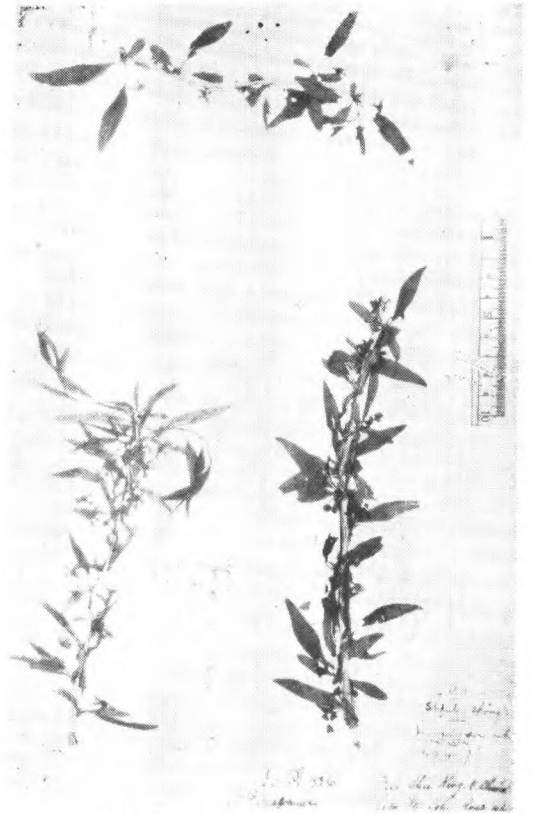
Potentilla Veitchii Wils.
ex Veitch.

Pourthiaea Decne.

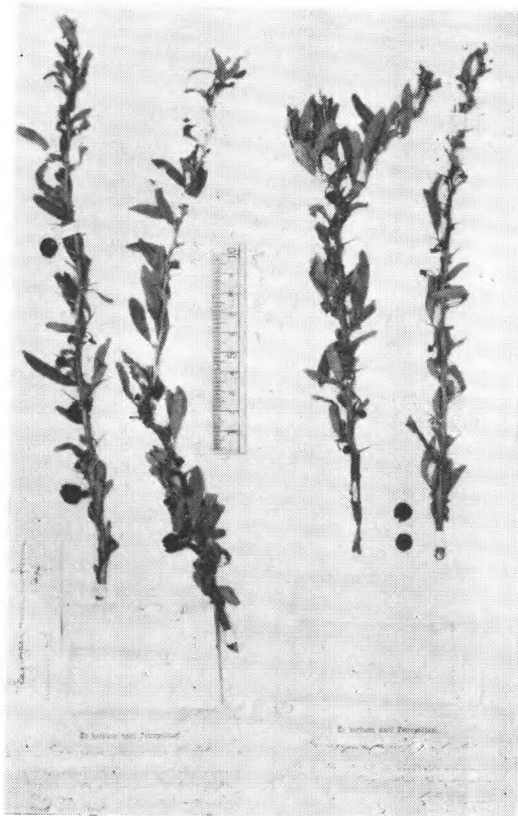


Pourthiaea Benthamiana Nakai
T. Kawakami et Y. Shimada 无号,
Patina, 台湾

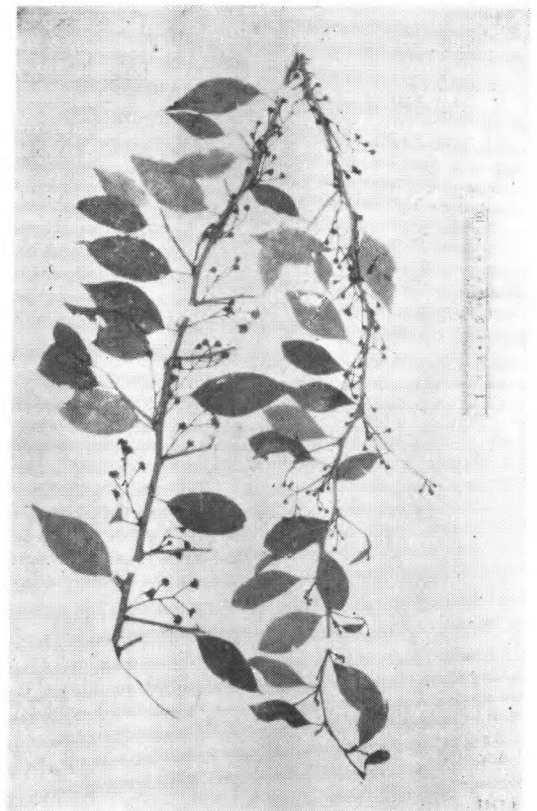
蕤核屬 *Prinsepia* Royle.



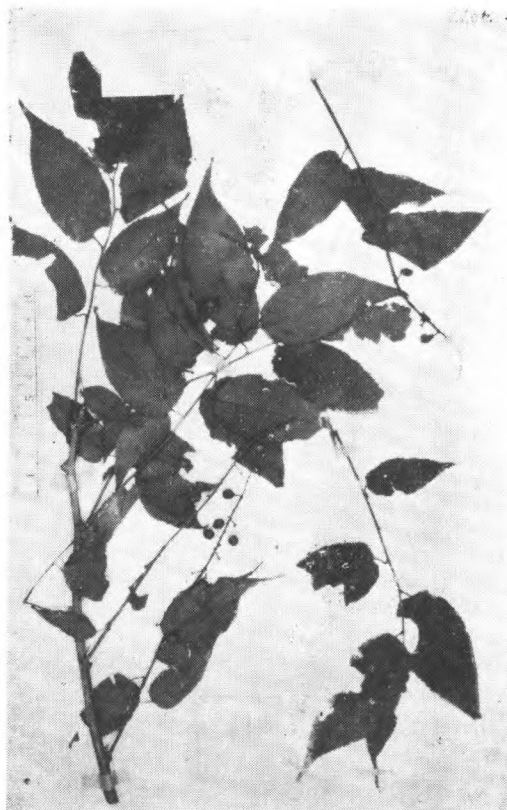
Prinsepia sinensis Oliv.
J. Ross 94, (type.) 辽宁瀋阳



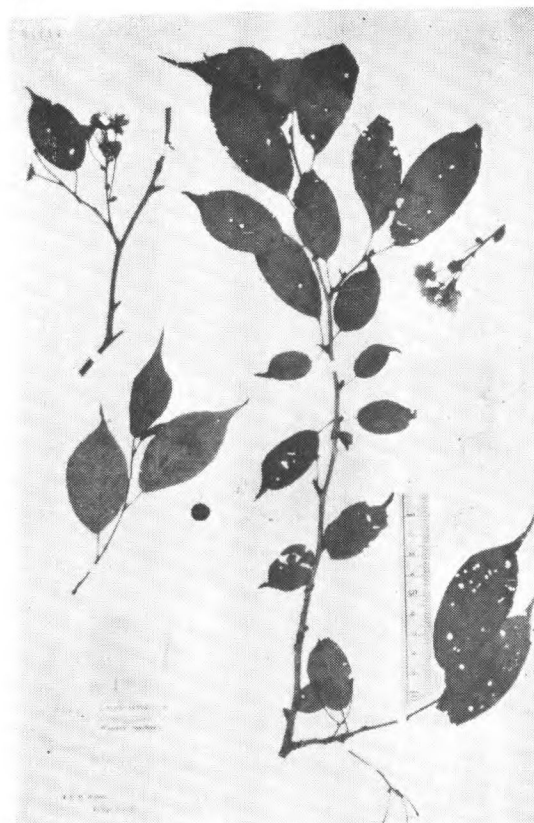
Prinsepia uniflora Batal.
Potanin, (type.) 蒙古



Prinsepia utilis Royle
Henry 9281. 云南蒙自

李屬 *Prunus* L.

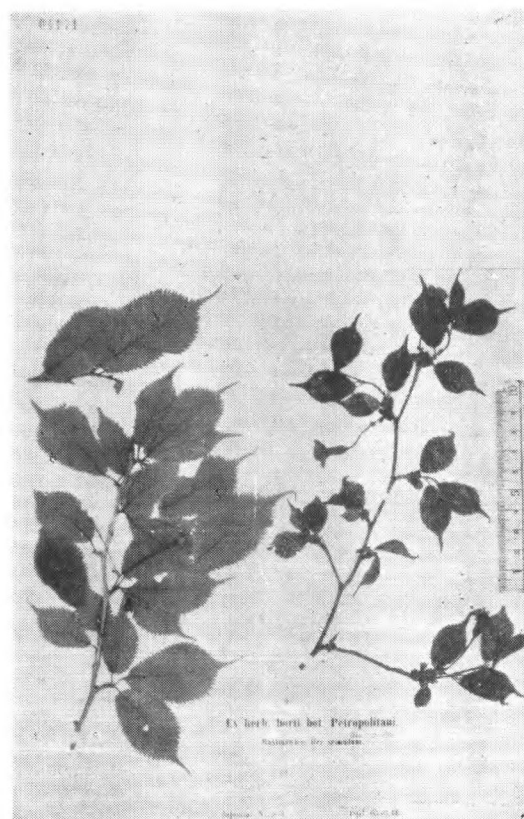
Prunus acrophylla Schneider
Henry 4077 (type.) 湖北巴东



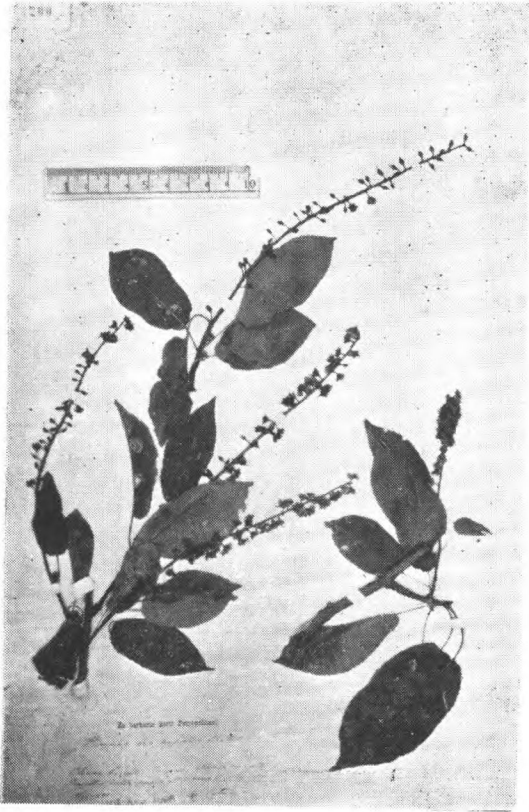
Prunus pleiocerasus Koehne
Wils 904a (syntype) 四川信川县西



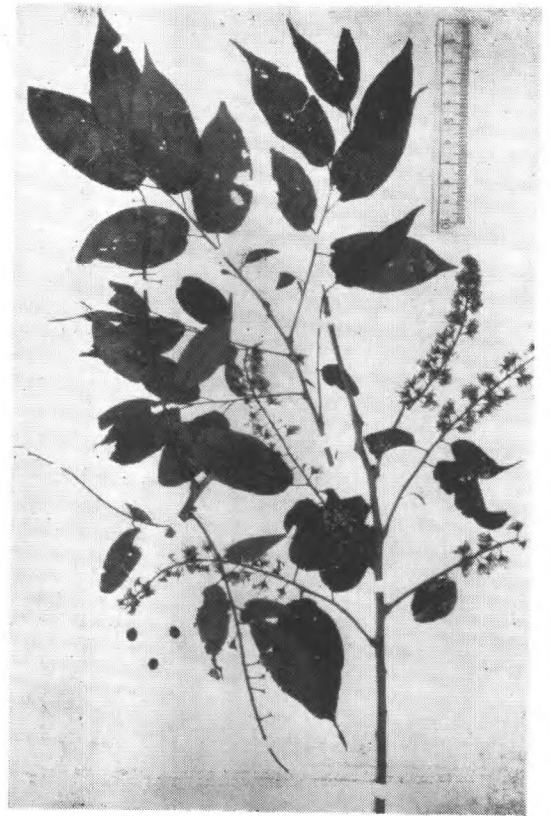
Prunus acuminata Hook. f.
Henry 11173. 云南普洱



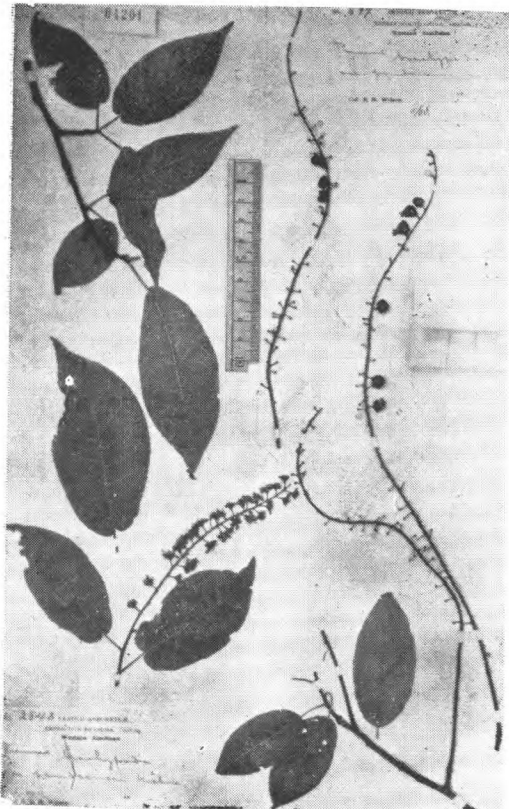
Prunus apetala (Sieb. et Zucc.) Franch.
et Sav.
Tschonoski (type of prunus
Tschonoski) 日本



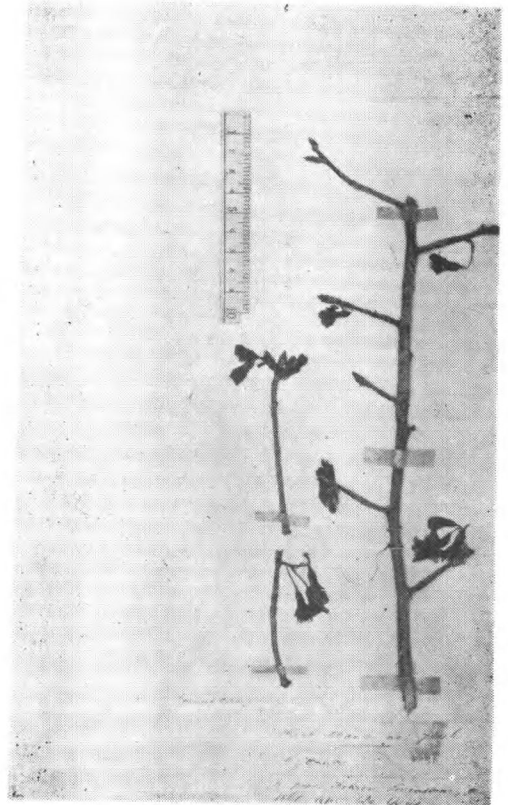
Prunus brachypoda Batal.
Potanin, (cotype.) 甘肃东部



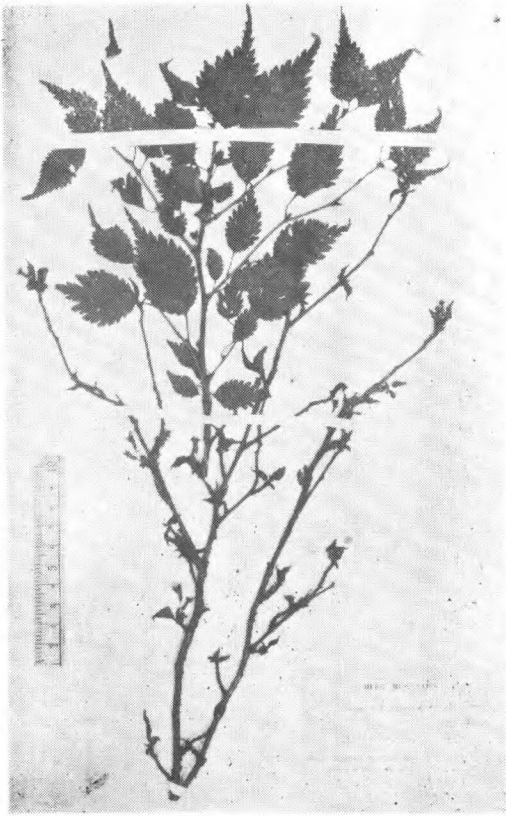
Prunus brachypoda Batalin var.
microdonta Koehne
Wils. (Veitch) 2255 (syntype.) 湖北西部



Prunus brachypoda Batalin var.
pseudossisri Koehne
Wils. 2843 fl. 西康打箭炉
899 fr. 四川穆坪 (type.)



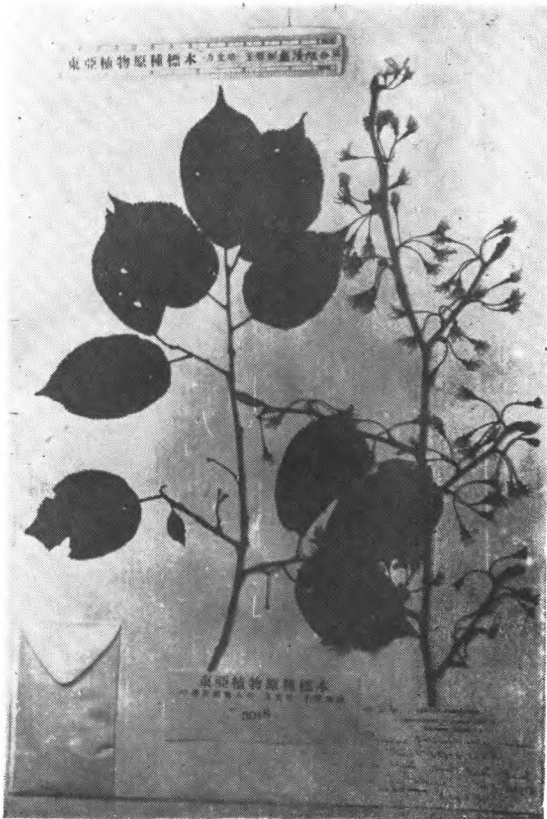
Prunus campanulata Maxim.
Hance 7046 (type) 福建



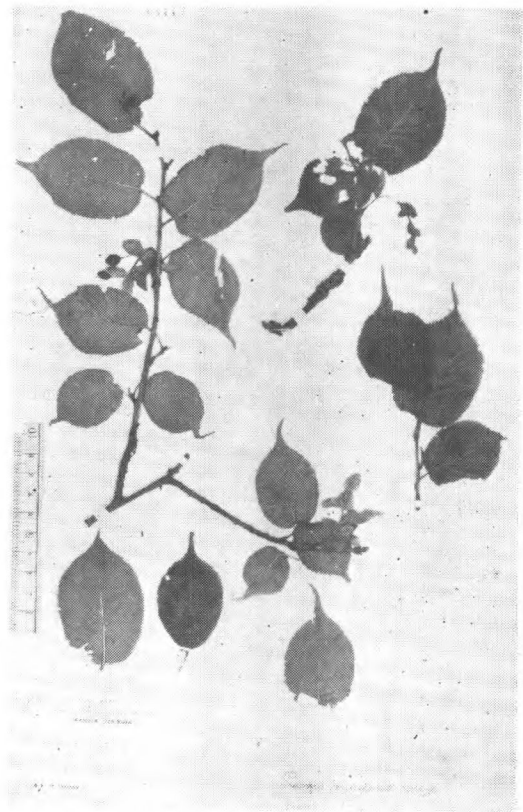
Prunus canescens Bois.
Farges (cotype) 四川城口



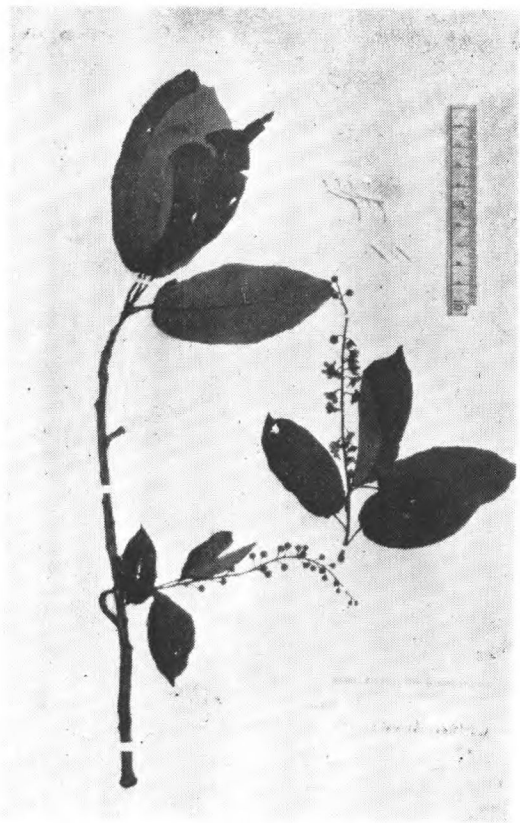
Prunus caudata Franch.
M. J. Delavay 2658 (type) 云南



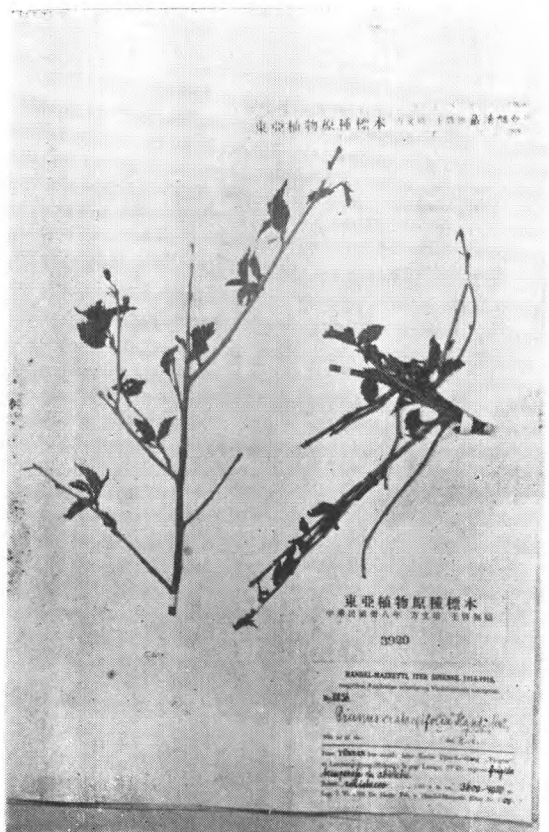
Prunus Conradinae Koehne
Wils. 3B (cotype) 湖北宜昌



Prunus conadenia Koehne
Wils. 904 (syntype) 西康打箭炉东北



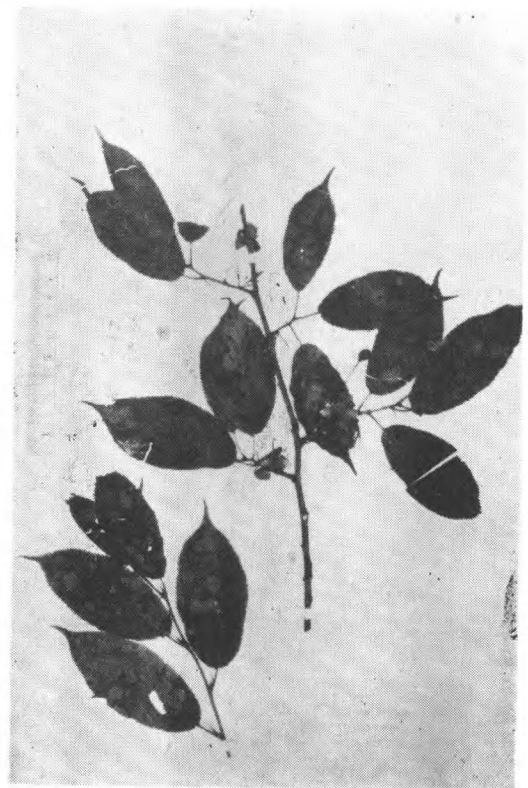
Prunus cornuta (Wall.) Steudel
H.-M. 8980 云南澜一怒



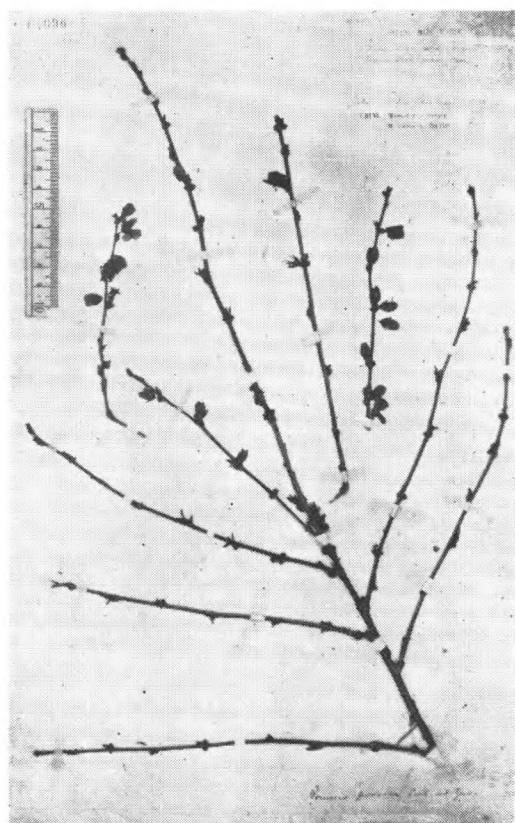
Prunus crataegifolia H.-M.
H.-M. 8836 (isotype) 云南



Prunus cyclamina Koehne
Wils. 9 (isotype) 湖北长阳县



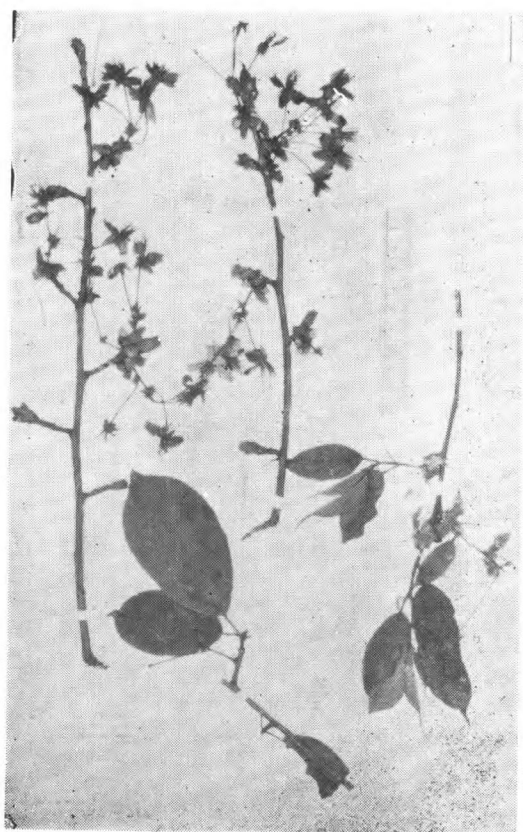
Prunus cyclamina Koehne var.
biflora Koehne
Wils. (Veitch) 4859 (type.) 四川峨眉



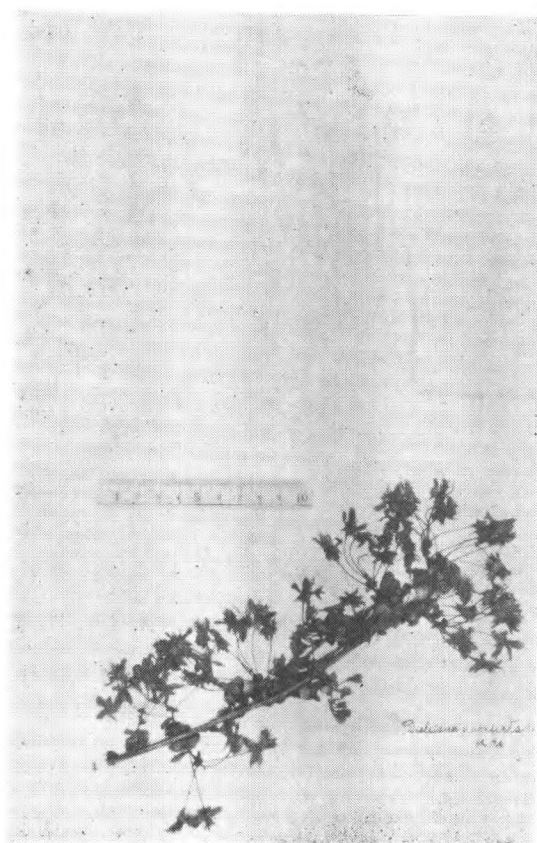
Prunus Davidiana (Carr.) Fr.
David 1684 (type.) 热河



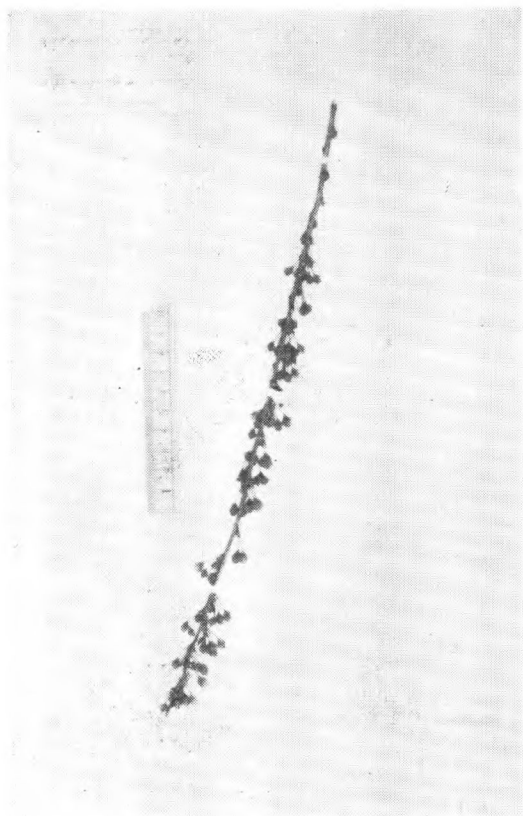
Prunus Dielsiana C. K. Schneider
Henry 5812 (type) 湖北



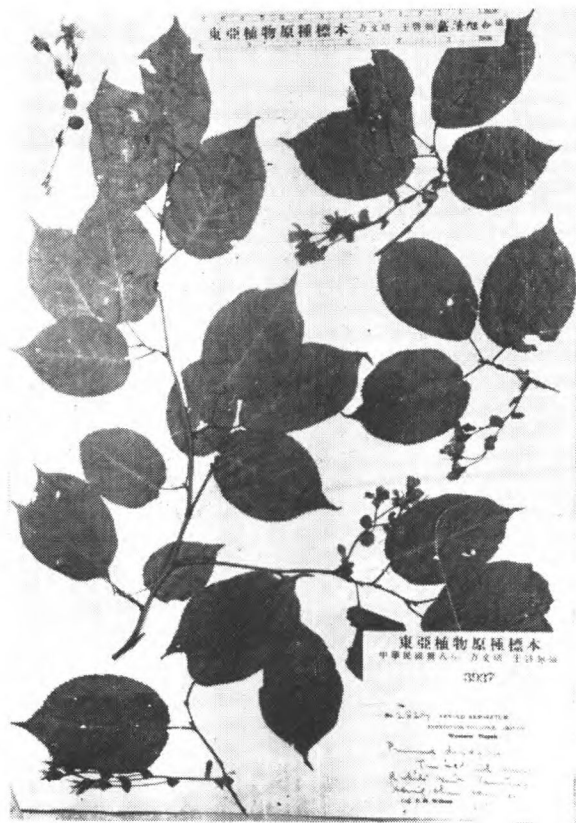
Prunus Dielsiana Schneider var. *laxa*
Koehne
Wils. 68 (type) 湖北兴山县



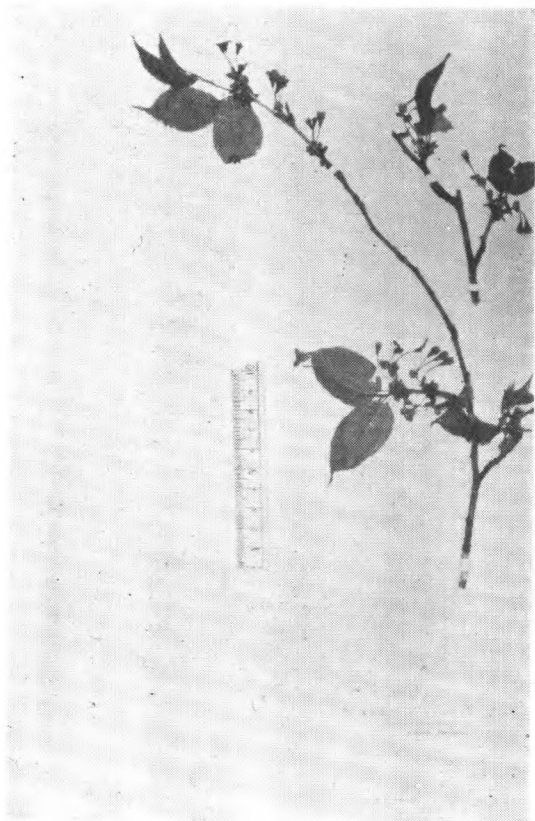
Prunus Dielsiana Schneider var. *conferta*
Koehne
Wils. (Veitch) 308 (type) 湖北巴东



Prunus dictyoneura Diels
Wm. Purdom. 344 陝西延安



Prunus discadenia Koehne
Wils. 2829 (cotype.) 湖北



Prunus droseracea Koehne
Wils. 2821 (type) 四川穆坪



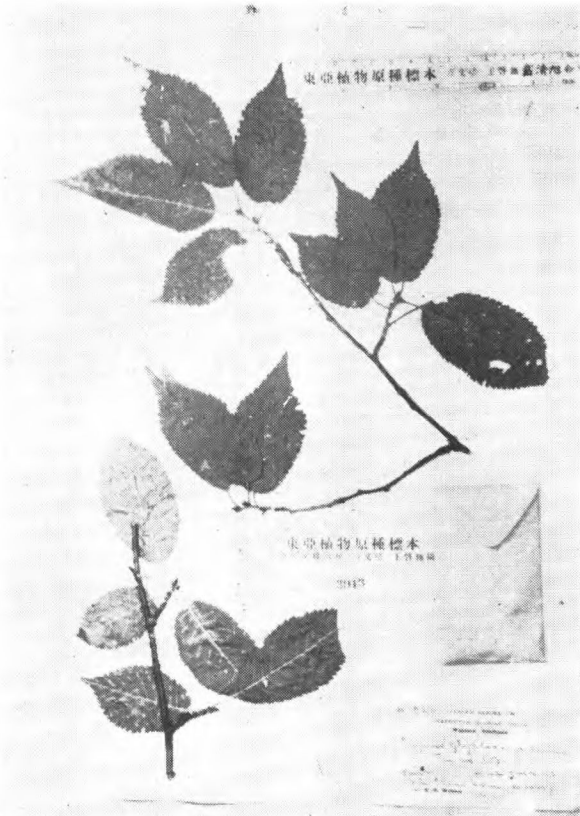
Prunus Fordiana Dunn
Herb. Hgkg. 1329 (type) 广东



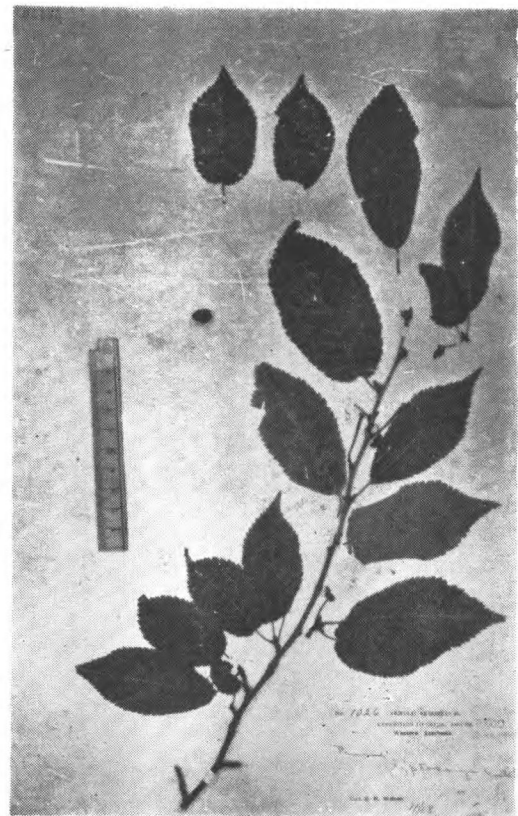
Prunus glandulosa var. *trichostyla*
Koehne
 Wils. 43 (isotype.) 湖北宜昌



Prunus glandulosa var. *trichostyla*
Koehne
 Faber 196 浙江天台



Prunus glyptocarya *Koehne*
 Wils. 1026 (isotype) 四川



Prunus glyptocarya *Koehne*
 Wils. 1026 (type) 四川汶川县



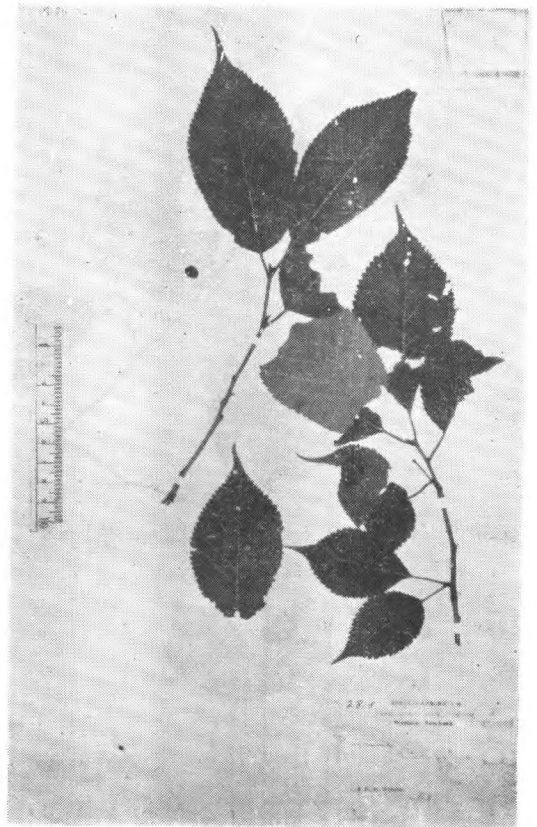
Prunus gracilifolia Koehne
Wils. 178 (type) 湖北房县



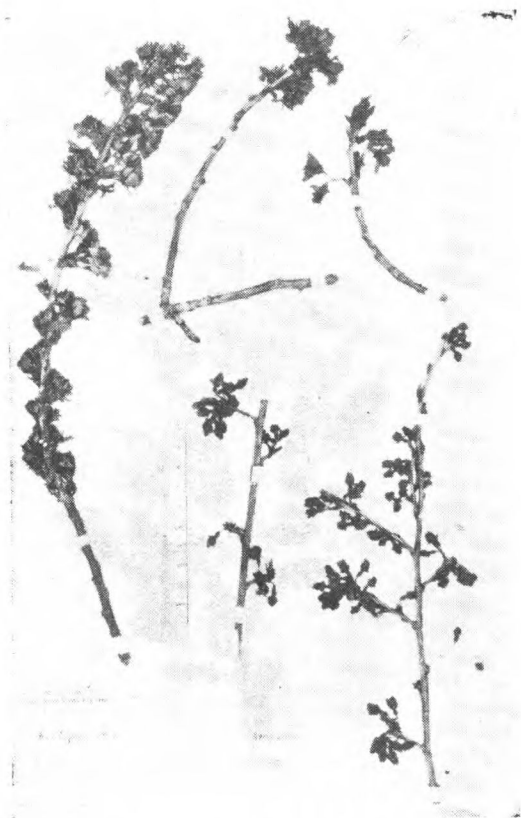
Prunus Helenae Koehne
Wils. 2826 (syntype) 湖北巴东



Prunus Henryi (Schneider) Koehne
Henry 10629 (type) 云南蒙自



Prunus hirtifolia Koehne.
Wils. 2818 (type) 四川灌县



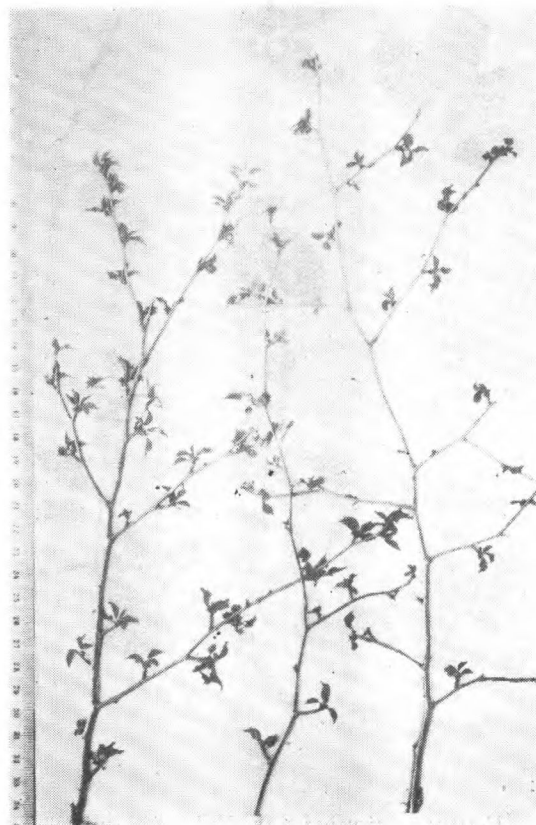
Prunus hirtipes Hemsl.
Henry 7804 湖北襄阳, Maries (type)
江西九江, E. Faber 911 南京



Prunus humilis Bge.
Hancock 53, 北京西山, Bunge (cotype)
中国



Prunus humilis Bge.
W. Y. Hsia 1855 河北



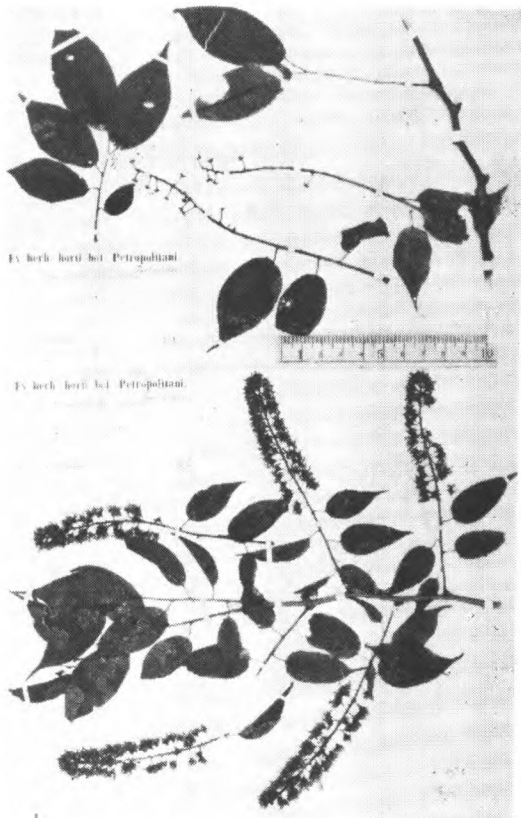
Prunus incisa Thbg.
Thbg. (type) 日本



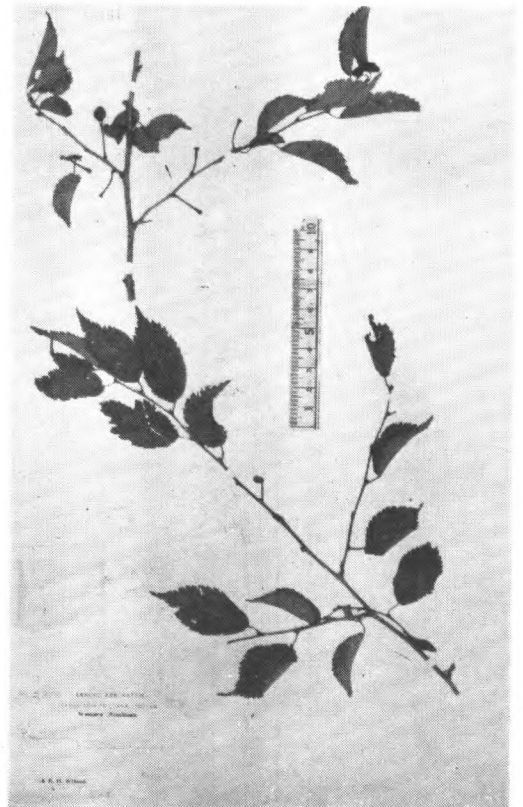
Prunus involucrata Koehne.
Wils. 1 湖北宜昌



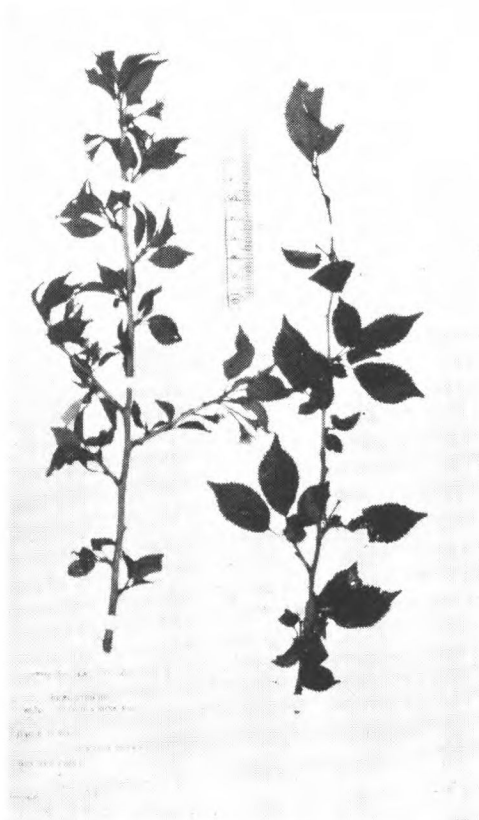
Prunus japonica Thbg.
Thbg. (type) 日本



Prunus japonica var. *Nakaii* (Lévl.)
Rehder.
Faurie 334 (isotype.) 朝鮮



Prunus latidentata Koehne
Wilson 2819 (syntype.) 西康打箭炉



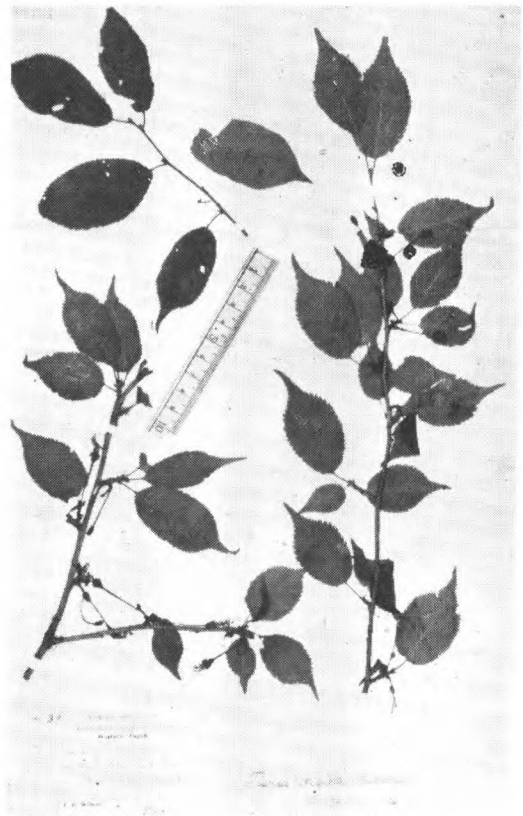
Prunus latidentata Koehne var. *trichostoma* (Koehne) Schneider
Wils. (Veitch) 3524a (syntype.) 四川西部



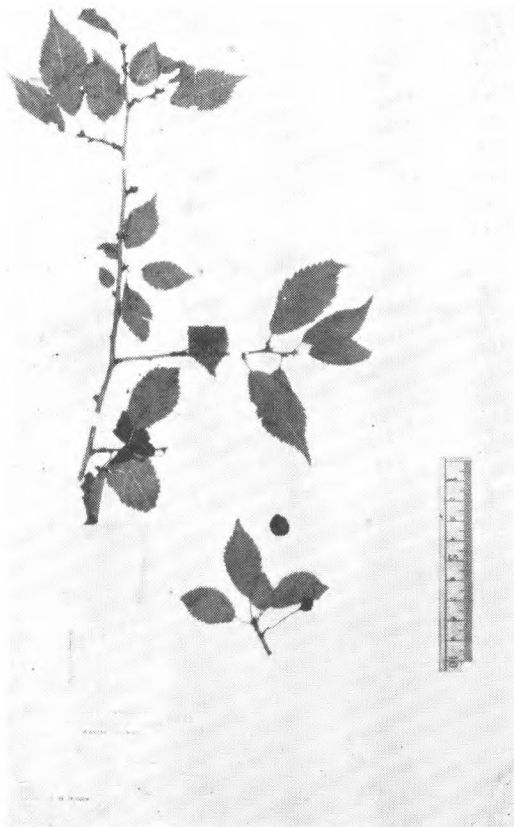
Prunus latidentata Koehne var. *Soulieana* Cardot
Soulie (cotype) 西康



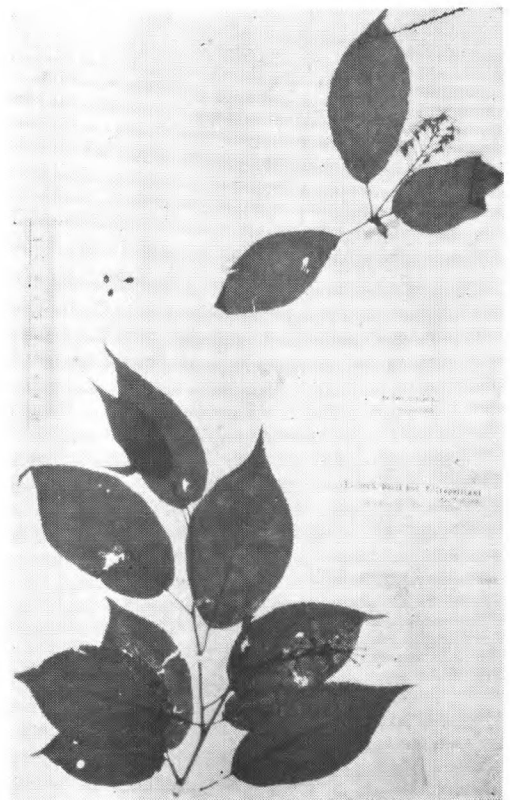
Prunus laxiflora Koehne.
Wils. 62 (type.) 湖北兴山



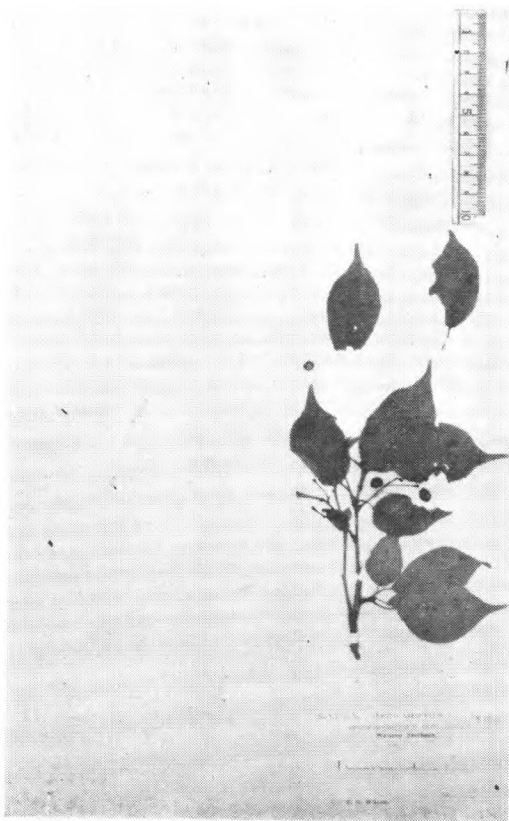
Prunus litigiosa Schneider
Wils. 39. 湖北巴东



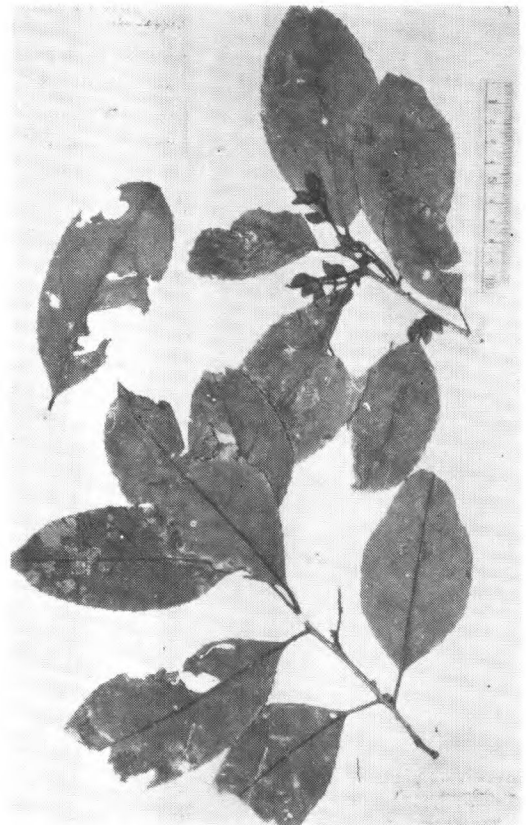
Prunus lobulata Koehne
Wils. 912 (syntype.) 西健打箭炉



Prunus Maackii Rupr.
Max. (cotype.) 东北东南部



Prunus macradenia Koehne
Wils. 4016 (type.) 四川松潘



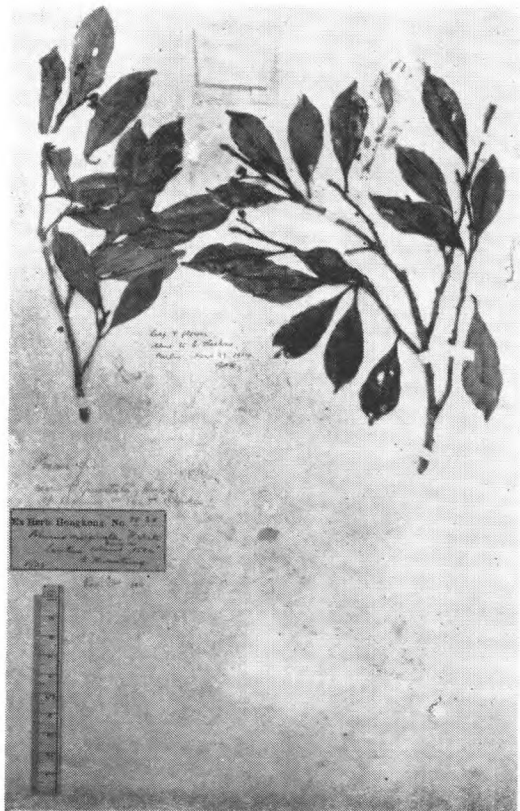
Prunus macrophylla Sieb. et Zucc.
Sampson et Hance in herb. Hance 16424



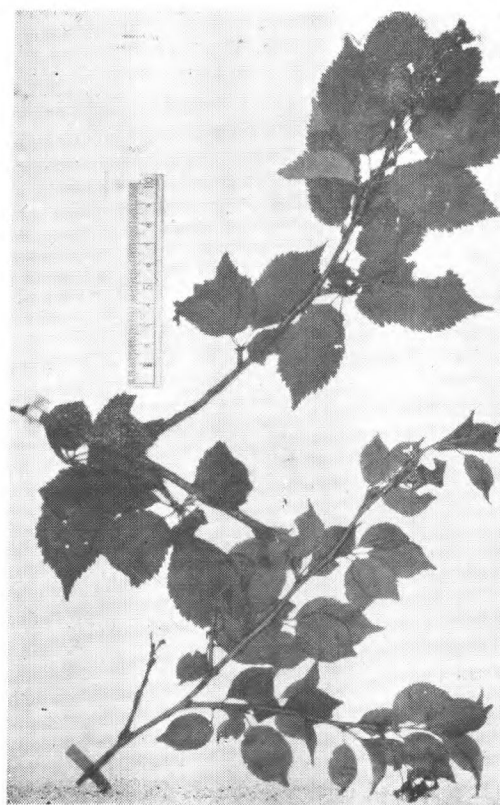
Prunus majestica Koehne
Henry 9411, 9411B (type) 云南蒙自



Prunus malifolia Koehne
Wils. 3 (type) 湖北襄阳



Prunus marginata Dunn
Herb. Hgkg. 1430. 香港烂头岛



Prunus Maximowiczii Rupr.
Max. (cotype) 黑龙江



Prunus microbotrys Koehne
Wils. 2847 (isotype.) 四川雅州



Prunus micromeloides Koehne
Wils. 824 (syntype) 四川瓦山



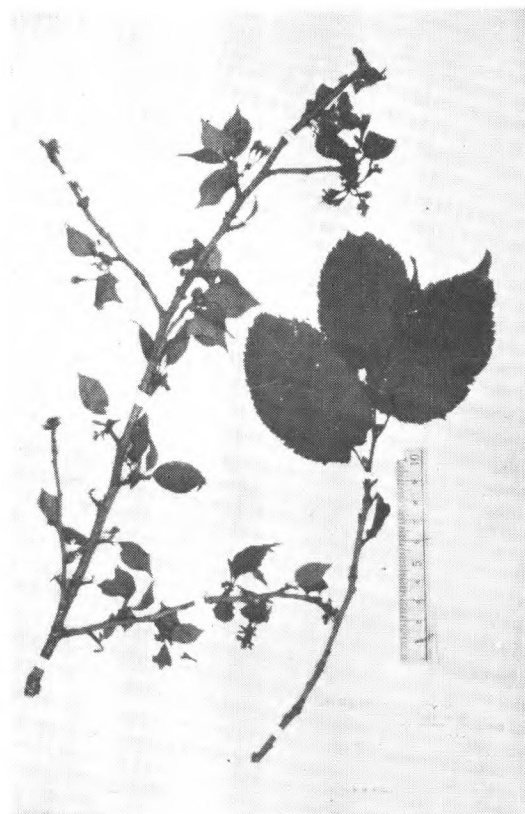
Prunus mugus H.-M.
H.-M. 9289 (type) 云南



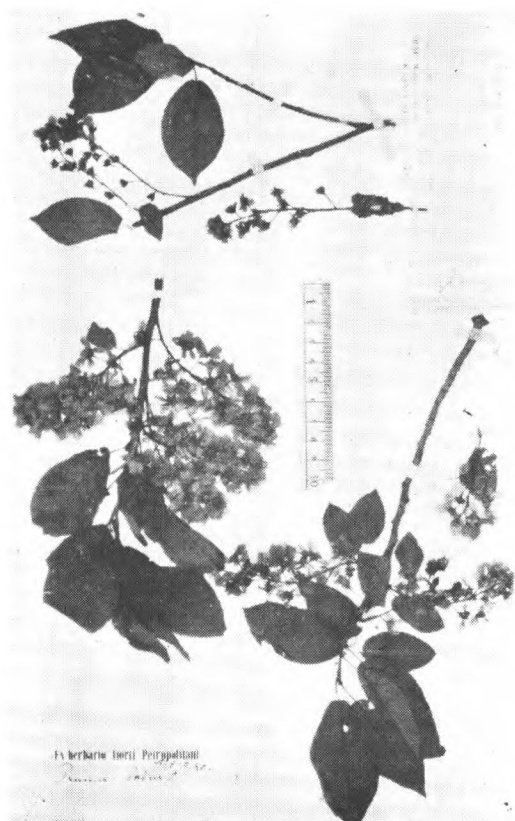
Prunus mume Sieb. et Zucc.
(cotype?) 日本



Prunus nubium H.-M.
王德輝, H.-M. 1 (type) 湖南武崗云山



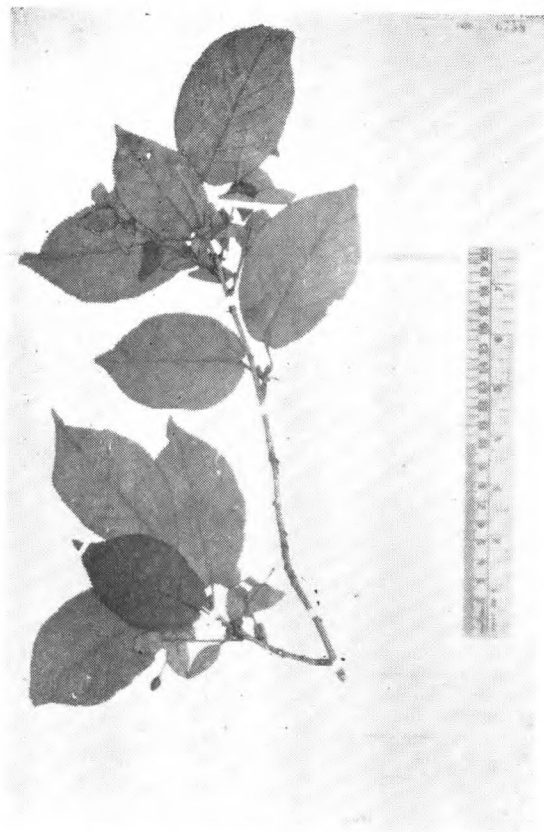
Prunus oxyodonta Koehne
Wils. 2822 (type) 西康汉源大相岭



Prunus Padus L.
David 707 热河



Prunus Padus L. var. *Purdomii*
(Koehne) Rehd.
Herb. Hers. 2034. 山西武强县



Prunus patentipila H.-M.
Forrest 19431. (type) 云南长一澜分水岭



Prunus perulata Koehne
Wils. 2842. (isotype) 四川清溪县



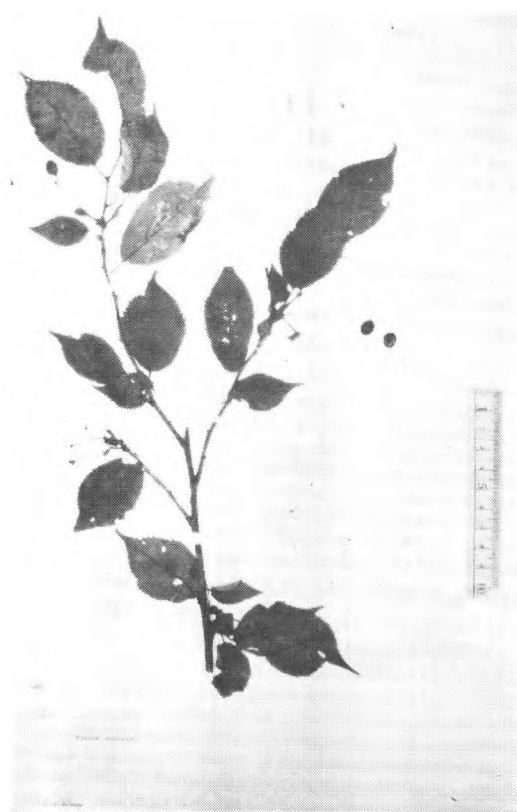
Prunus phaeosticta (Hance) Maxim. f.
dentigera Rehd.
Fang 1314 (type) 四川綦江县



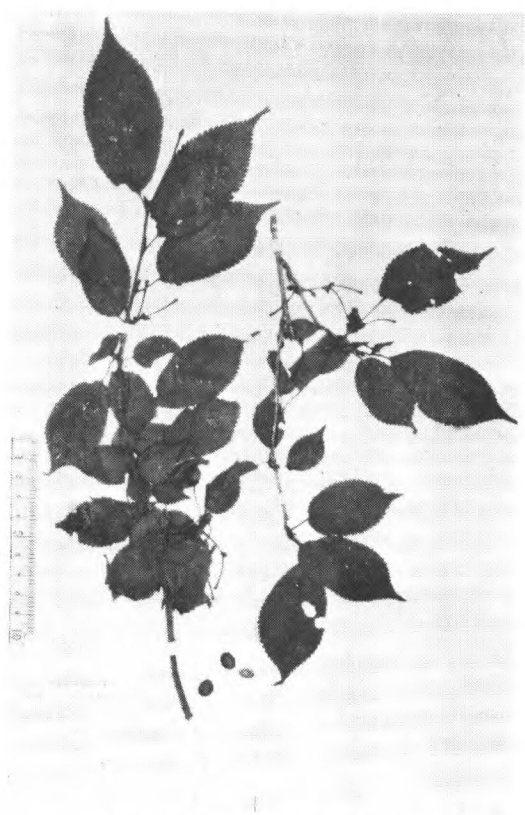
Prunus phaeosticta Maxim. f. *lasioclata*
Rehd.
Henry 116664 (type) 云南思茅



Prunus plurinervis Koehne
Wils. 907 (isotype) 川西打箭炉



Prunus plurinervis Koehne
Wils. 907 (type) 打箭炉东南



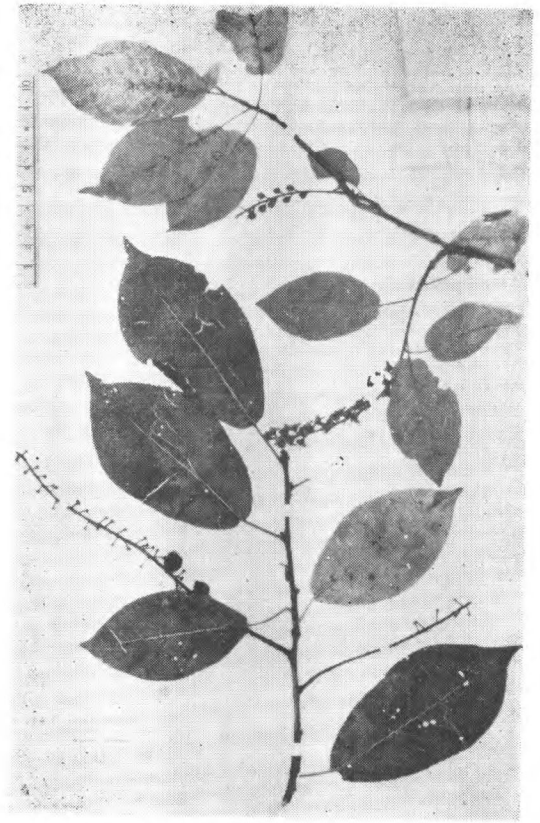
Prunus podadenia Koehne
Wils. (Veitch) 3525a (type) 四川西部



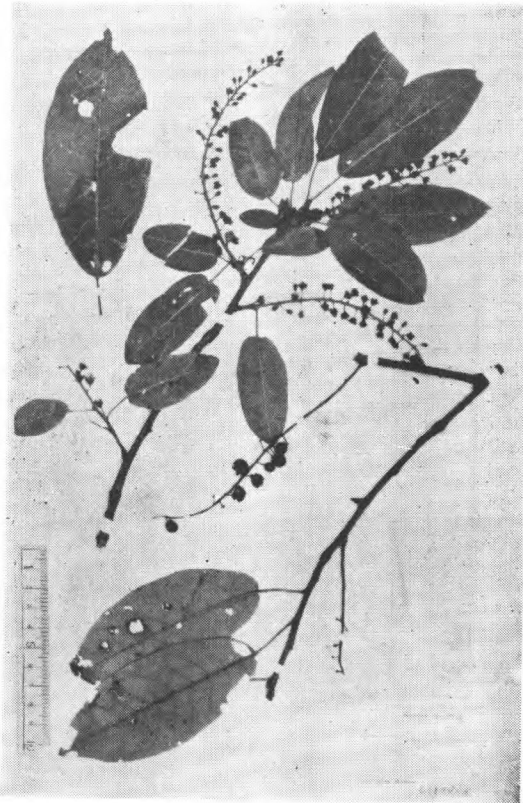
Prunus polytricha Koehne
Wils. 47 (isotype) 湖北巴东



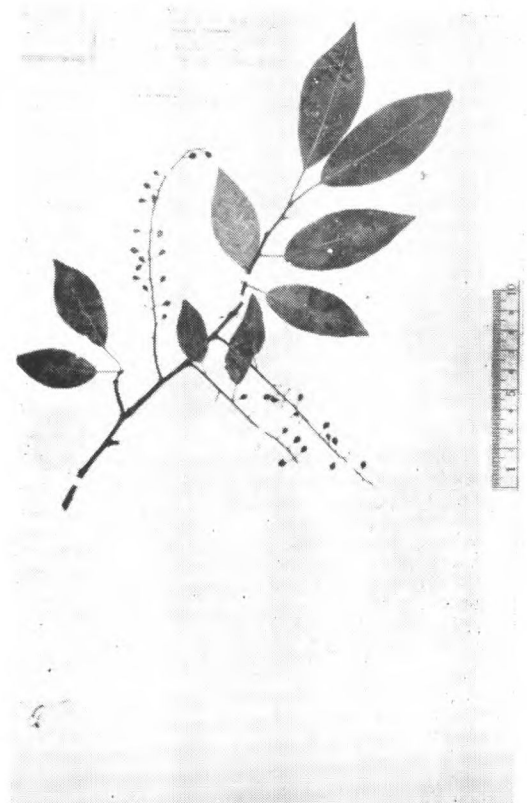
Prunus polytricha Koehne
Wils. 47 (type) 湖北巴东



Prunus pubigera (Schneider) Koehne
var. obovata Koehne
Wils. 1045. 四川汶川



Prunus pubigera (C. K. Schneider)
Koehne *var. Potaninii* Koehne
Wils. 980 (syntype) 西康康定东南



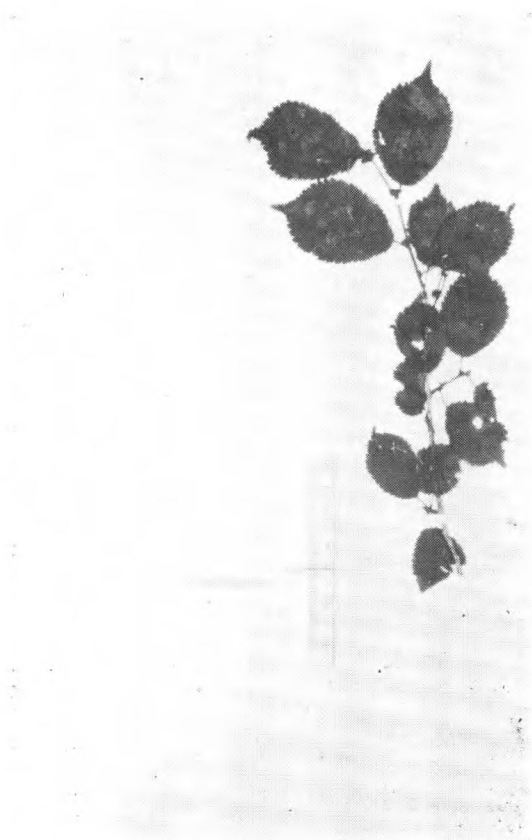
Prunus pubigera (Schneider) Koehne
var. Prattii Koehne
Wils. 2845 (type) 四川穆坪



Prunus Rehderiana Koehne
Wils. 2831 (isotype) 湖北



Prunus Rossiana Koehne
Wils. 182 (isotype) 湖北



Prunus Rossiana Koehne
Wils. 182. (type) 湖北房县



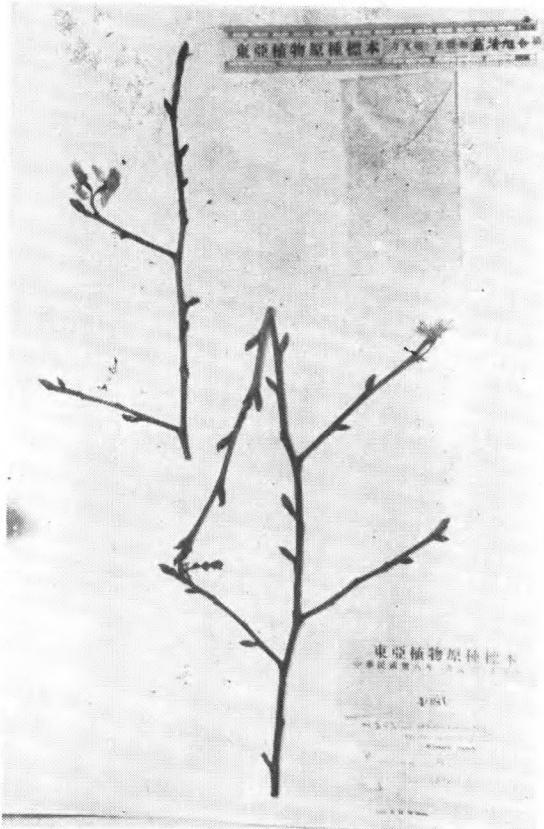
Prunus rufoides Schneider
Henry 5780 (type) 四川南巫山



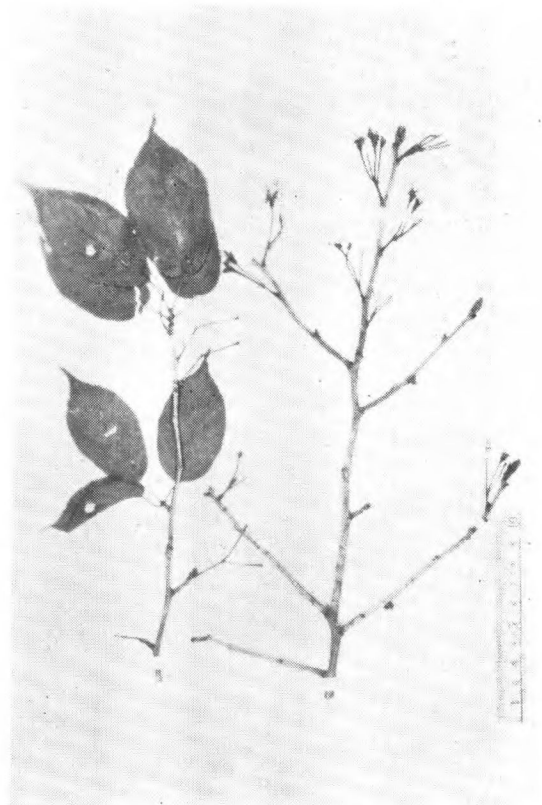
Prunus rufomicana Koehne
Wils. 1078 (cotype) 四川西部穆坪



Prunus salicina Lindl.
Wils. 116. 湖北襄阳



Prunus saltuum Koehne
Wils. 2824 (isotype) 湖北巴东



Prunus scopulorum Koehne
Wils. (Veitch) 196 (type) 湖北宜昌



Prunus sericea (Batal.) Koehne
Henry 5592A (type?) 四川东部巫山



Prunus serrula Fr.
Delavay 3790 (cotype) 云南



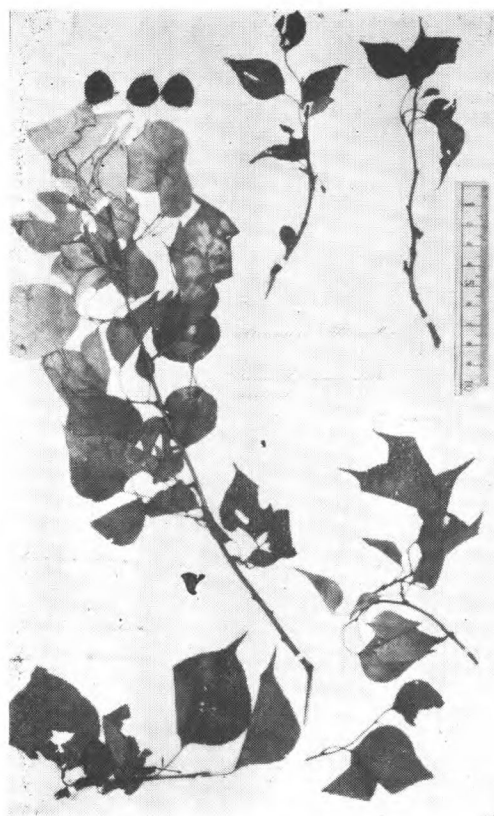
Prunus serrula var. *tibetica*
(Batalin) Koehne
Wils. 988 (isotype.) 西康打箭炉



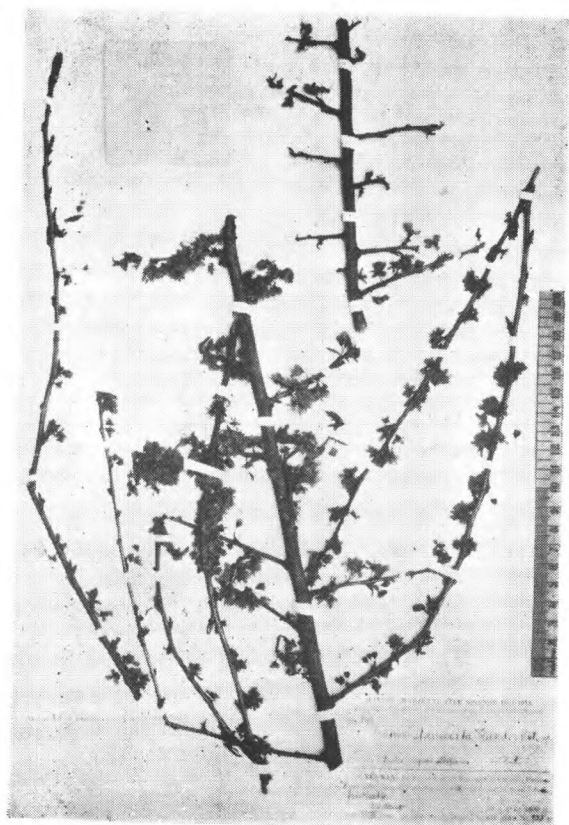
Prunus serrulata Lindl. var. *pubescens*
Wils.
Wils. (Veitch) 66 (type) 湖北襄阳



Prunus setulosa Batal.
Potanin, (Co-type) 甘肃东部



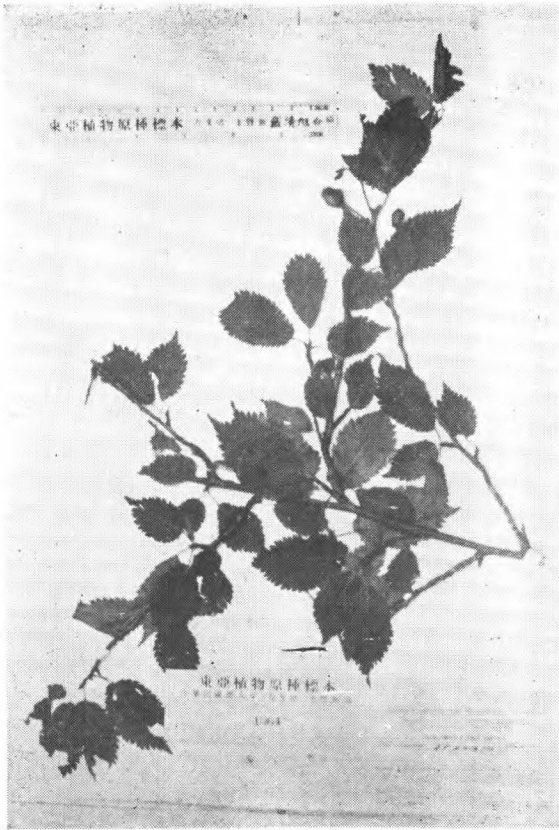
Prunus sibirica L.
A. W. Besser. Nertschinsk.



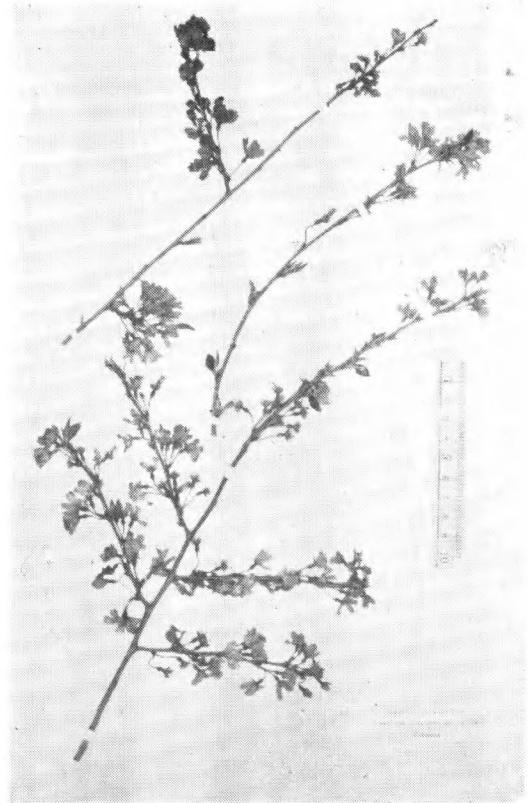
Prunus staminata H.-M.
H.-M. 548 (type) 云南普渡河



Prunus stellipila Koehne
Wils. 177 (isotype) 湖北西部



Prunus stipulacea Maxim.
Rock 14767 甘肃



Prunus subhirtella Miq. var. *ascendens*
(Mak.) Wils.
Wils. 10085 湖北襄阳



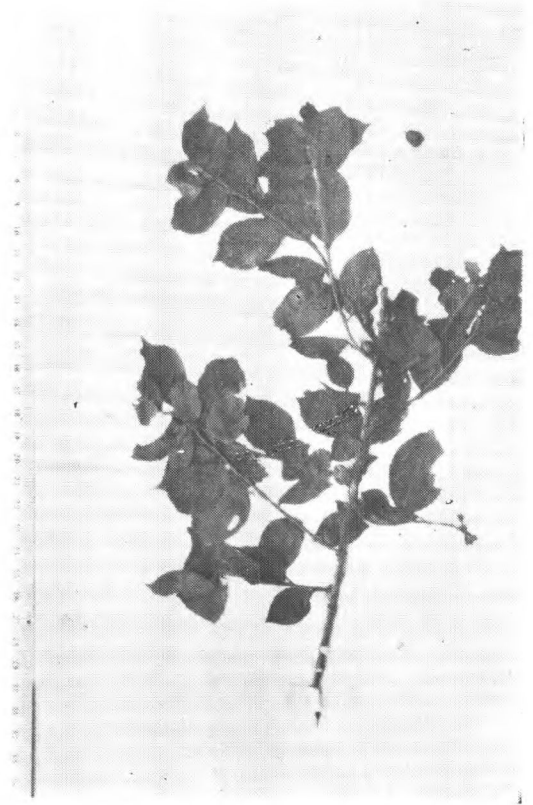
Prunus tangutica (Batalin) Koehne
Potanin (cotype) 甘肃东部



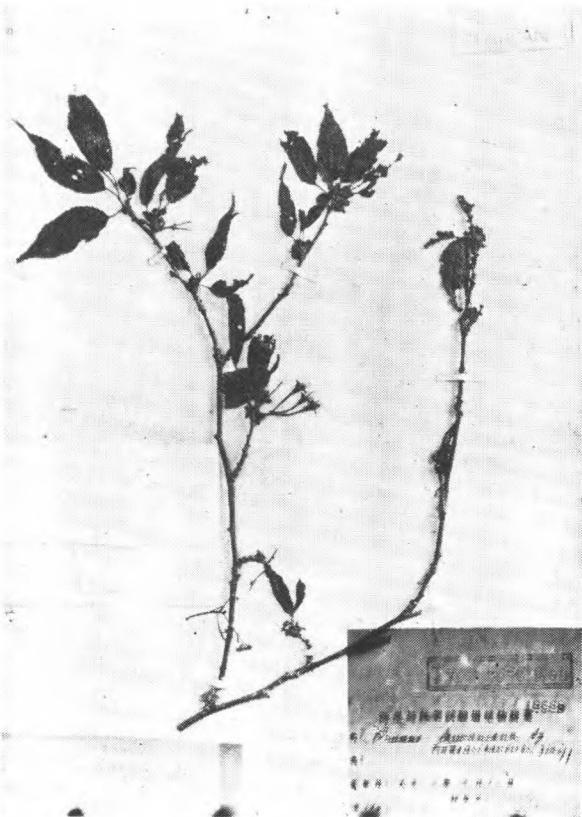
Prunus tatsienensis Batal.
Potanin (cotype) 西康打箭炉



Prunus tenella Batsch
Karelen et Kirelow.



Prunus tomentosa Thbg.
Thbg. (type) 日本



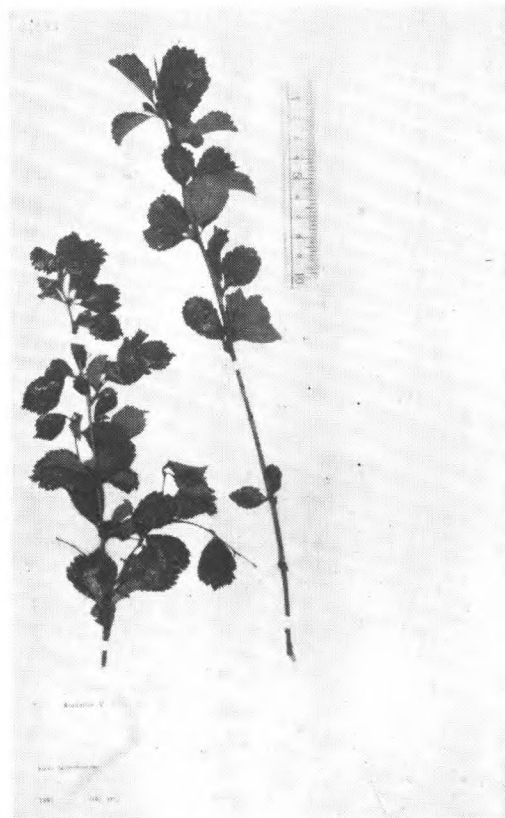
Prunus transarisanensis Hay.
K. Kanehira, I. Tanaka, et B. Hay. 无号
(isotype) Mt. Arisan, Tozan, 台湾



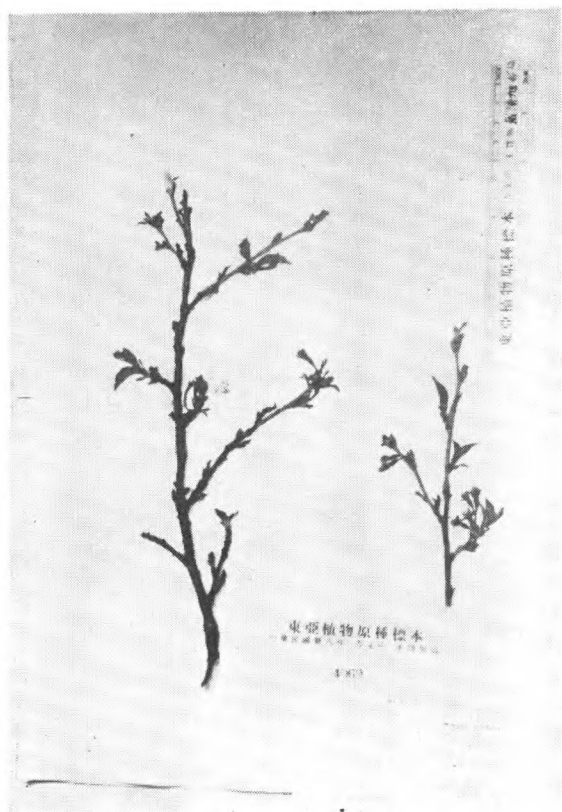
Prunus trichostoma Koehne
Wils. 4860 (isotype) 四川峨眉



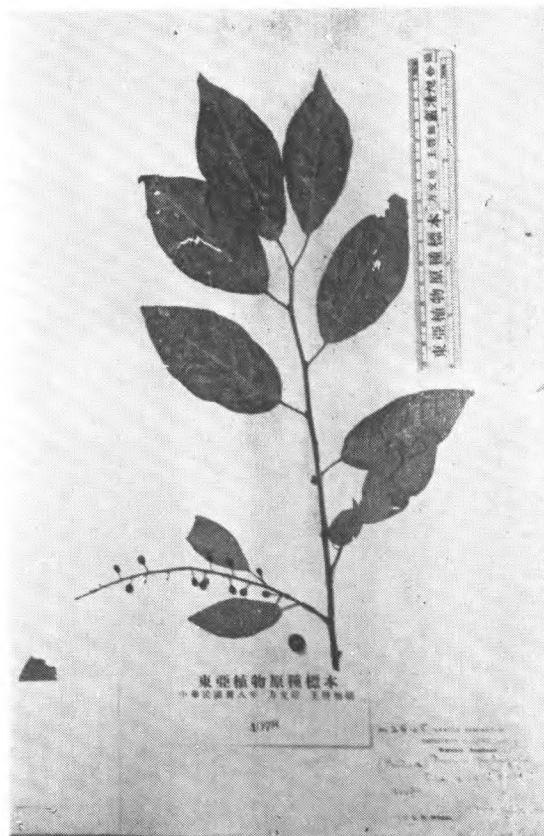
Prunus triloba Lindl.
B. M. t. 8061 (type)



Prunus triloba Lindl var. *truncata*
Komarov.
Komarov. 915 (cotype.) 北朝鮮



Prunus Twymaniana Koehne
Wils. 810 (isotype) 四川汶川县



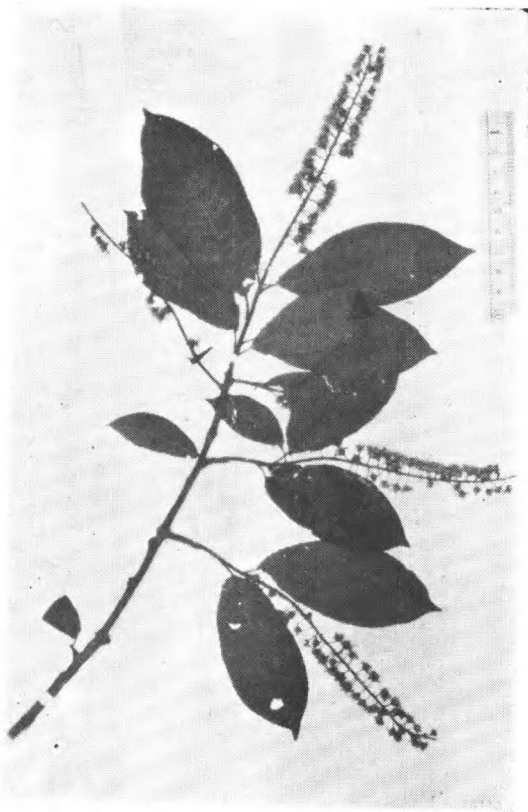
Prunus Vanioti Léveillé
Wils. 2845 (syntype) 四川穆坪



Prunus Vanioti var. *obovata* Koehne
Wils. 1045 (syntype)



Prunus Vanioti var. *Potanini* (Koehne)
Rehder.
Wils. 980 (syntype) 西康打箭炉

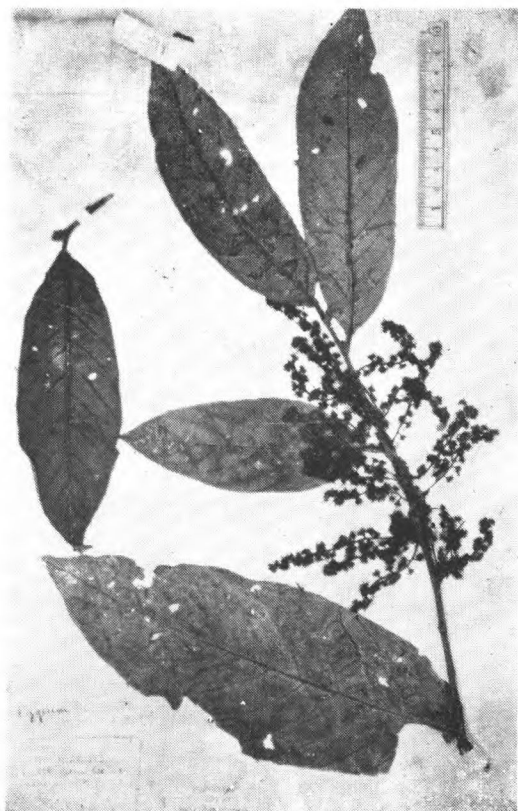


Prunus Wilsonii (Diels) Koehne
Wils. (Veitch) 2077 (type)



Prunus pleuroptera Koehne
Wils. 981 (isotype) 川西打箭炉

腎形果屬 *Pygeum* Caertn.

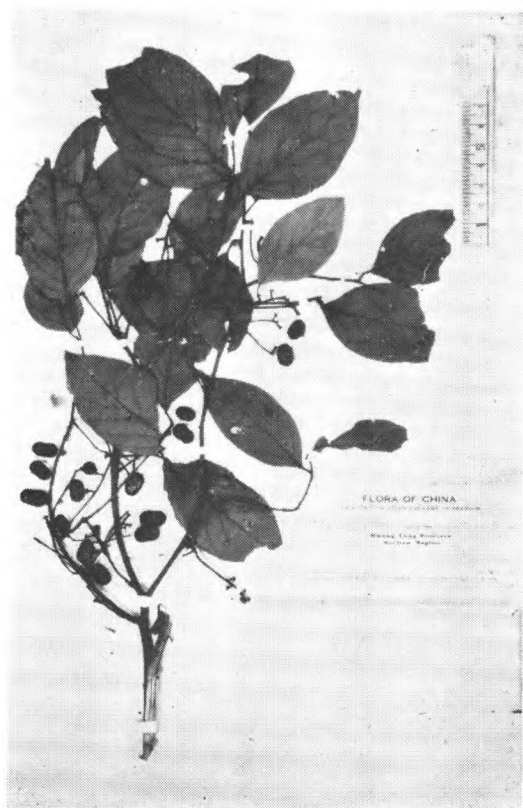


Pygeum Henryi Dunn
Henry 12313 (type) 云南思茅

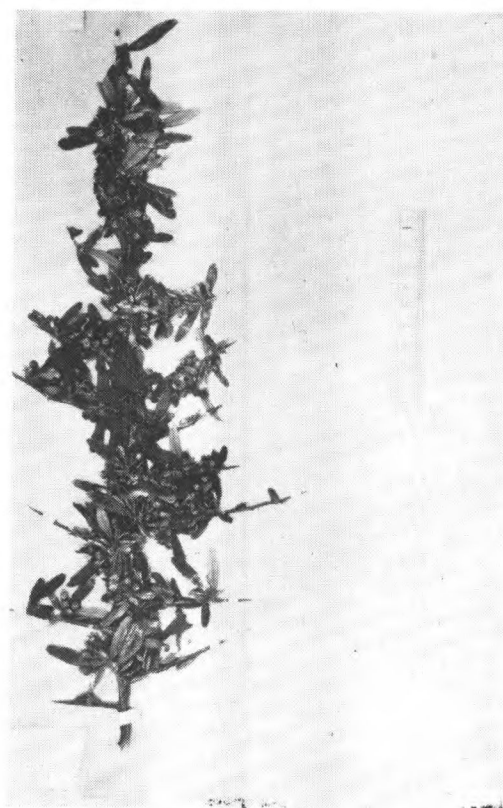


Pygeum Henryi Dunn
Henry 12313a (type) 云南思茅

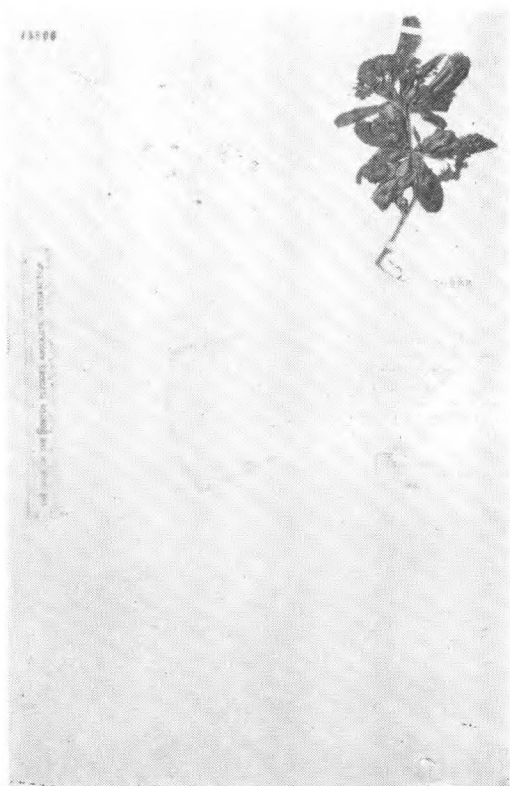
火把果屬 *Pyracantha* M. Roem.



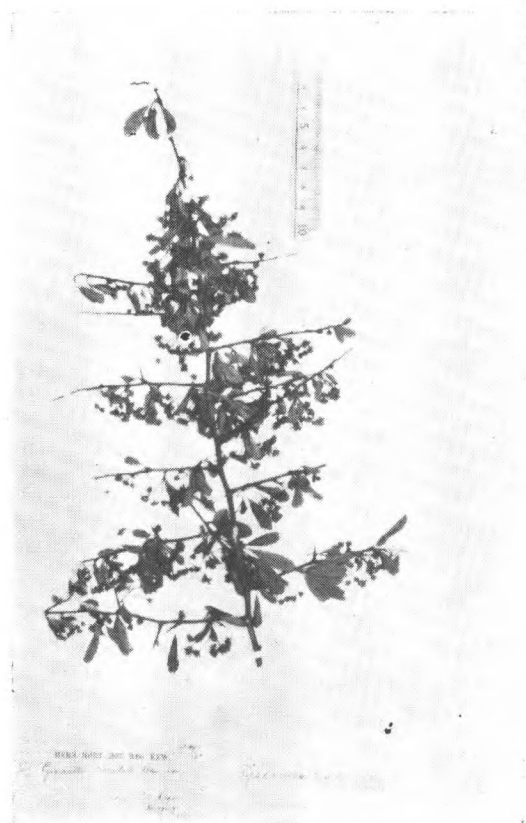
Pygeum Topengii Merr.
Tokang-Ping (cotype) 广东



Pyracantha angustifolia (Fr.) Schneider
Delavay (type) 云南



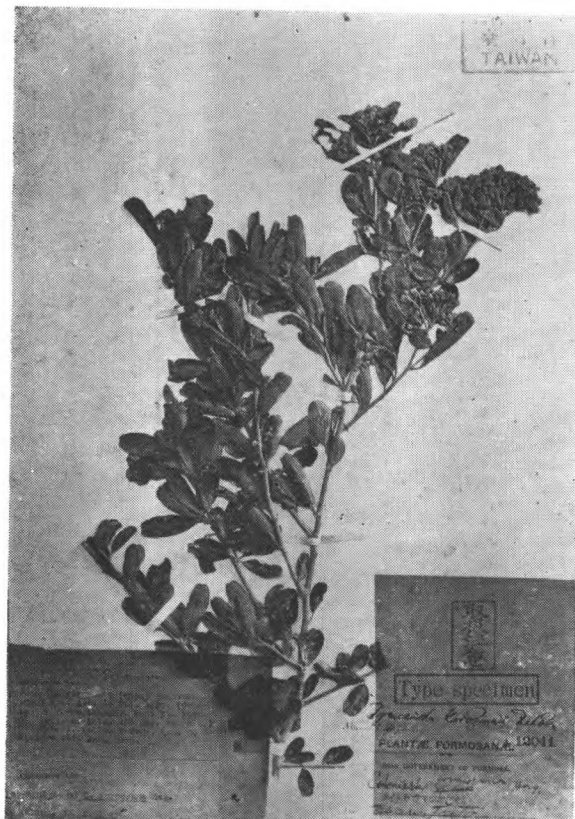
Pyracantha crenato-serrata (Hance)
Rehd.
Herb. Hance 20988 (type) 湖北宜昌



Pyracantha crenulata var. *Rogeroiana*
A. B. Jackson (type)



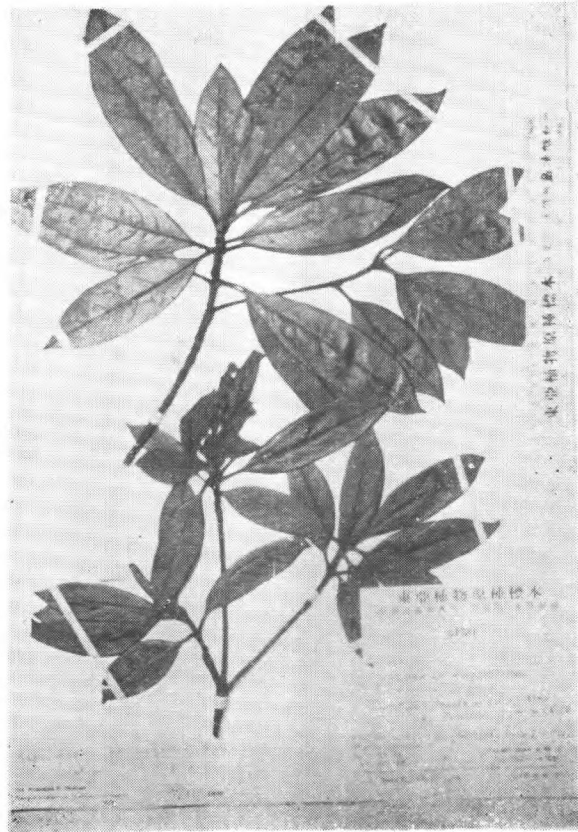
Pyracantha Fortuneana Maxim
Fortune A69 (type) 福建廈門



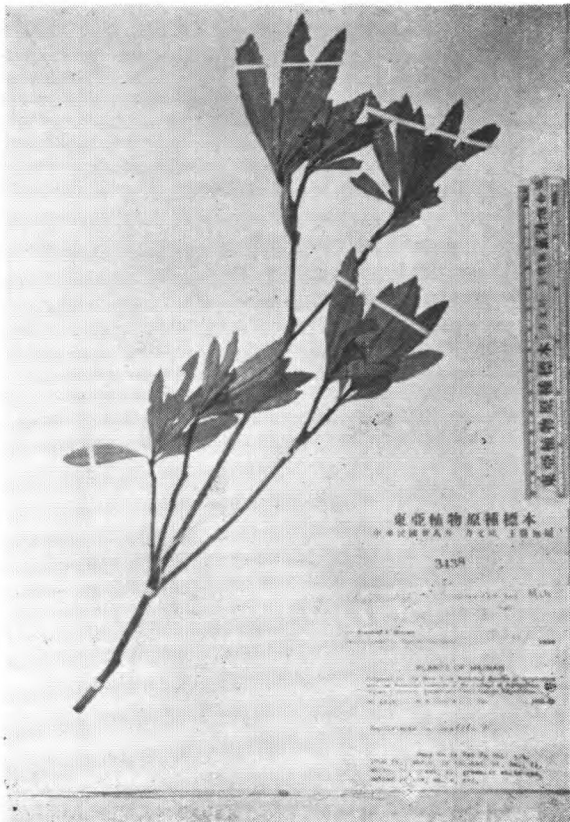
Pyracantha Koidzumii (Hay.) Rehd.
G. G. Nakahara 741 (isotype)
Taberi, Taito, 台湾

石班木屬 *Raphiolepis* Lindl.

Pyracantha atalantoides (Hance) Stapf
Hance 19960 (type) 貴州貴陽



Raphiolepis ferruginea Metcalf
Tsang 21055, (syntype) 广东



Raphiolepis hainanensis Metcalf
Chun et Tso 43670 (syntype) 海南



Raphiolepis indica (L.) Lindl. 香港



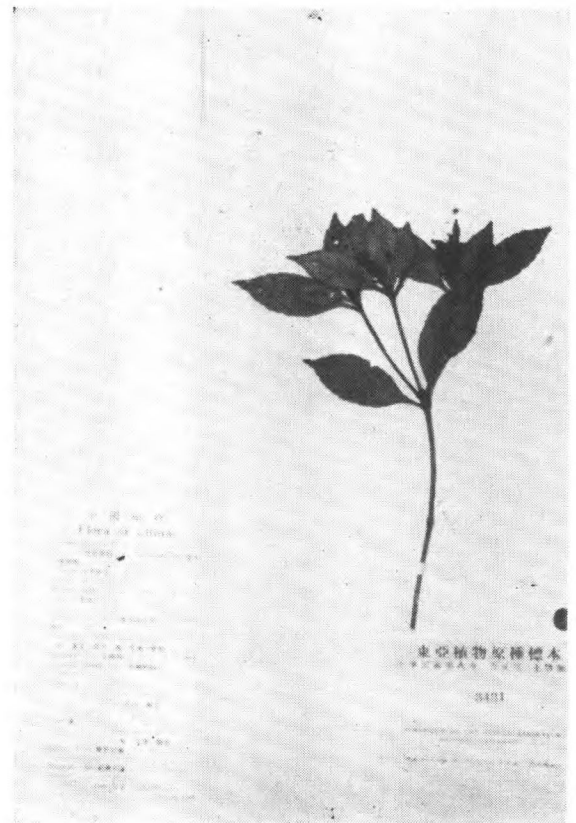
Raphiolepis lanceolata Hu.
Tsang 22007 广西



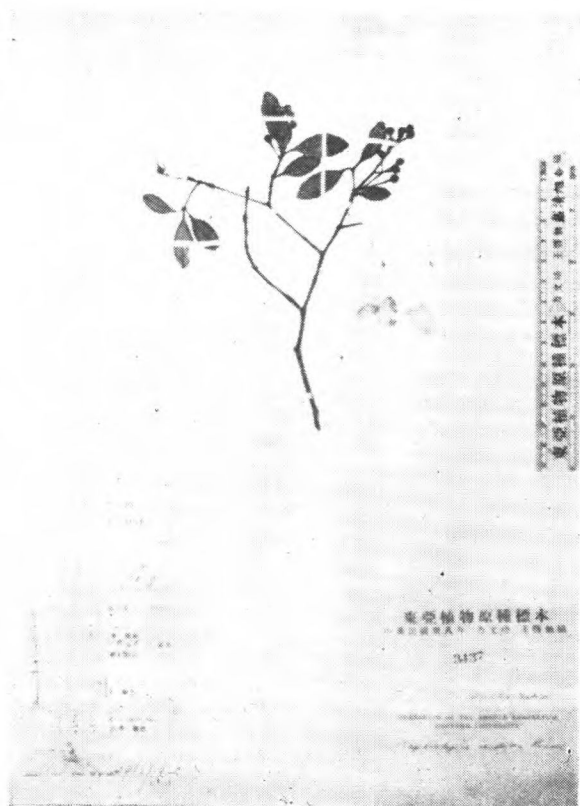
Raphiolepis liukiensis Nakai
Faurie 1562 (type) 朝鮮



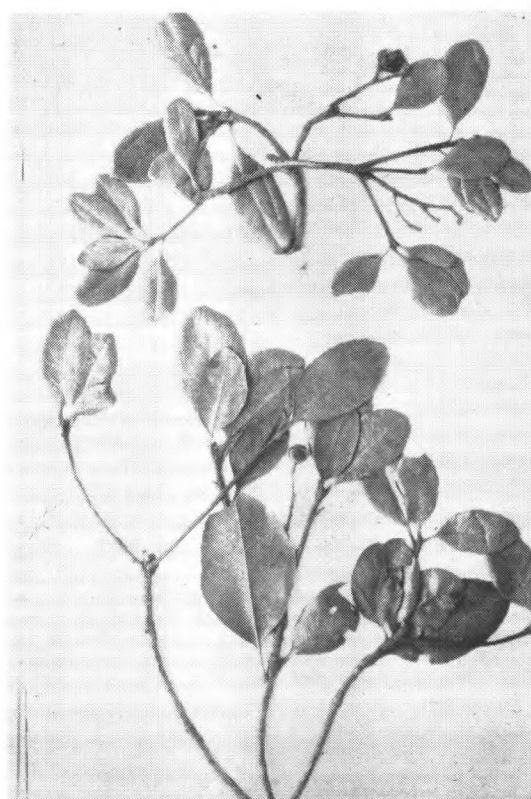
Raphiolepis major Card.
(cotype.)



Raphiolepis rugosa Nakai
Hu 211 (isotype.) 江西



Raphiolepis gracilis Nakai
Hu 220, (syntype) 浙江

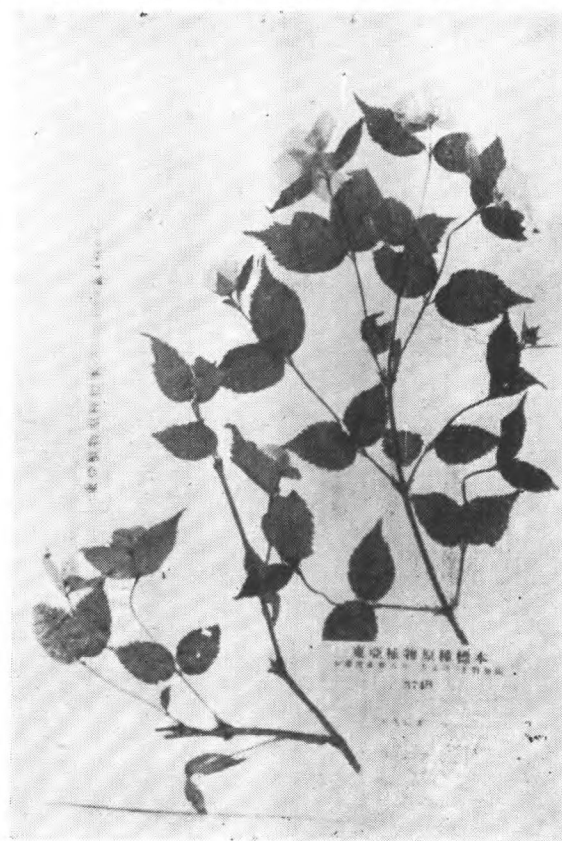


Raphiolepis umbellata (Thbg)
Schneider
Thbg (type) 日本

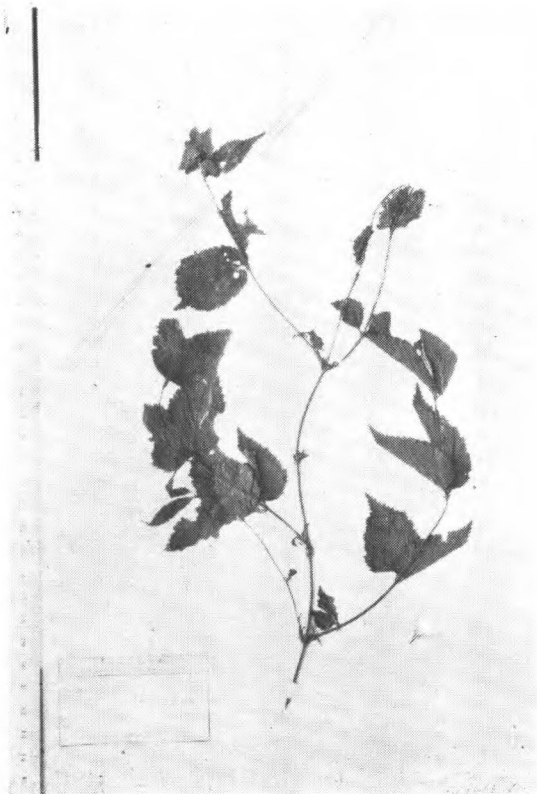
鷄麻屬 *Rhodotypus* Sieb. et Zucc.



Raphiolepis umbellata var. *liukiensis*
Koidzumi
Wils. 8173 琉球



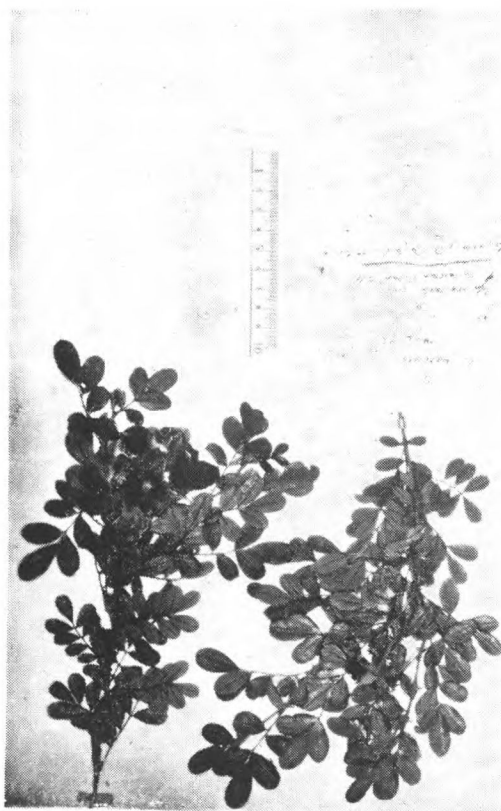
Rhodotypus kerrioides Sieb. et Zucc.
Wils. 3345 湖北

薔薇屬 *Rosa* Linn.

Rhodotypos scandens (Thbg.) Makino
Thbg. (type) 日本



Rosa banksiopsis Baker
Wils. 1099 (type)



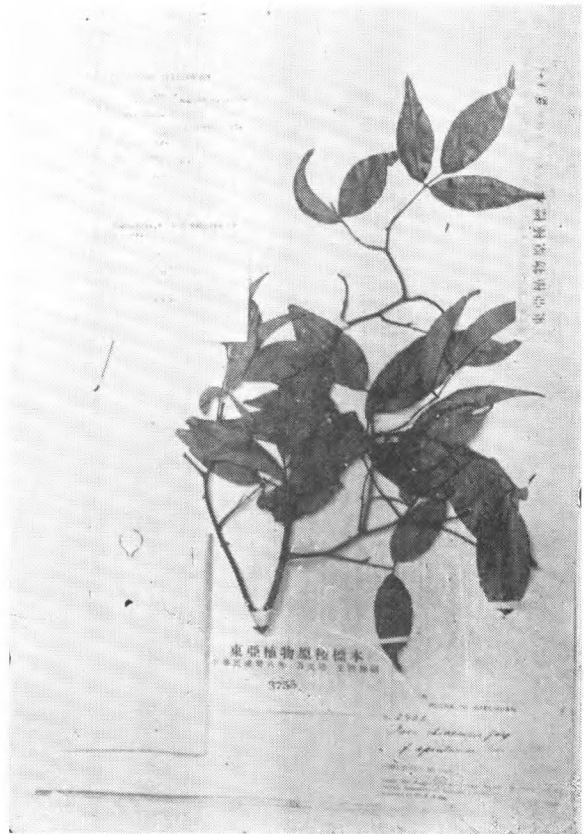
Rosa bracteata Wendl.
Ex Herb. J. Gay, (type?)



Rosa Brunonii Lindl.
Ex herb. J. Gay



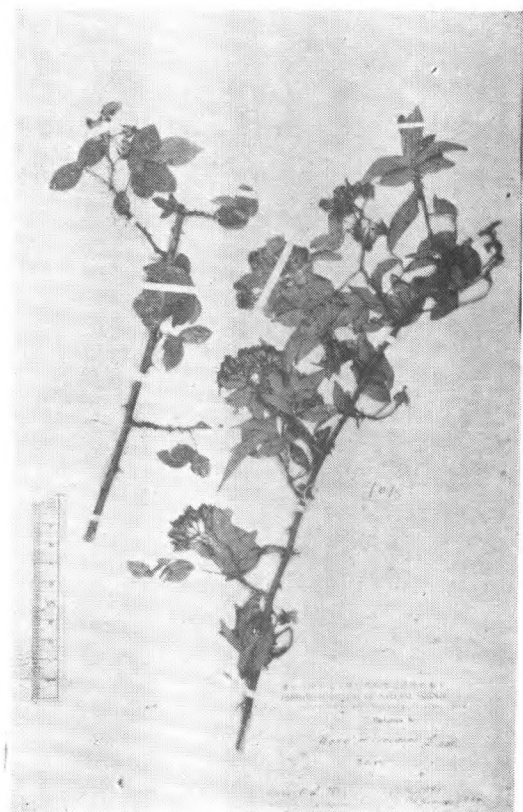
Rosa banksiopsis Baker
Wils. 5 (type)



Rosa chinensis Jacq. f. *spontanea* Rehd.
et Wils.
Fang 2402 四川峨眉



Rosa corymbulosa Rolfe
Wils. 630A (type) 湖北兴山县



Rosa cymosa Tattinnick
C. L. Tso 1095 江苏



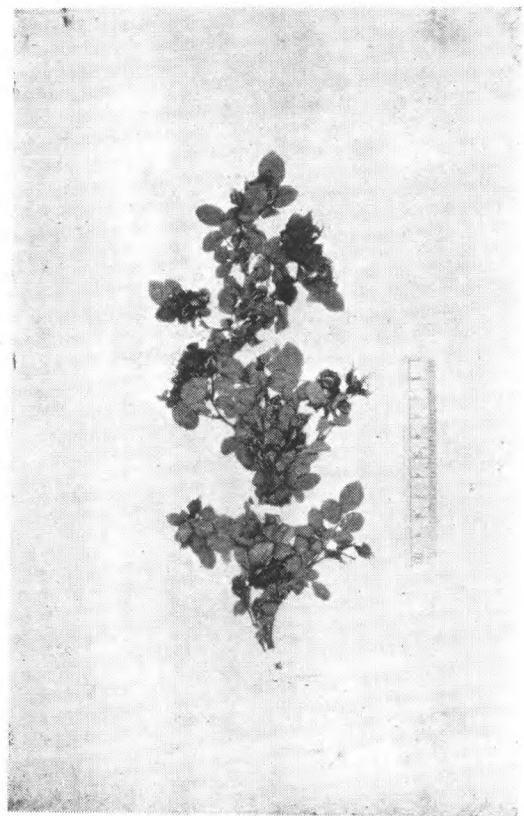
Rosa Davidii Crepin
Wils. 1060 (type) 四川汶川县西



Rosa davurica Pall.
W. Purdom 49. 热河围场



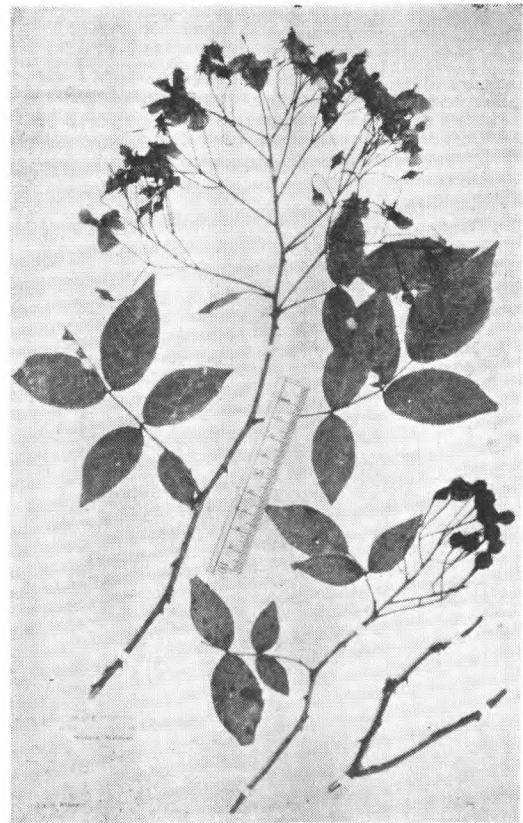
Rosa Davidii var. *elongata* Rehd. et Wils.
Wils. 1126 (type) 四川



Rosa Delavayi Card.
Delavay (cotype) 云南大理



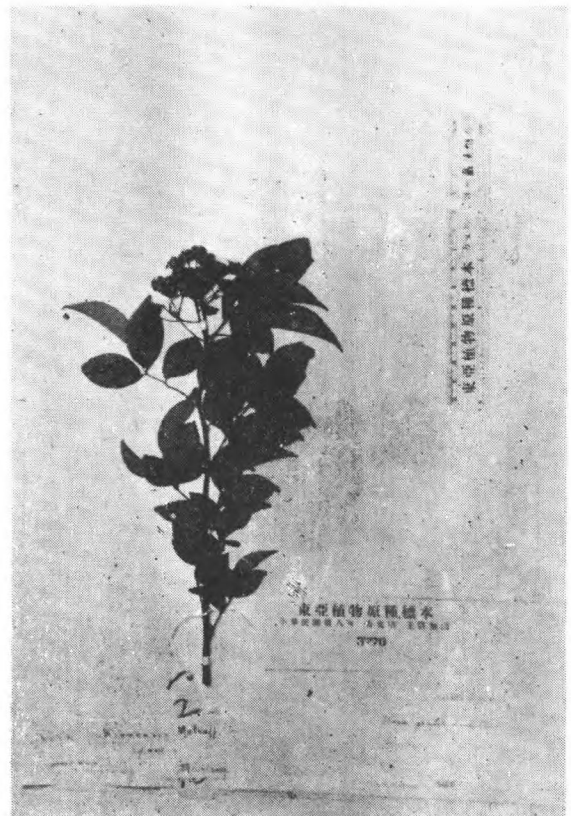
Rosa elegantula Rolfe
Wils. 4418 (type) 湖北房县



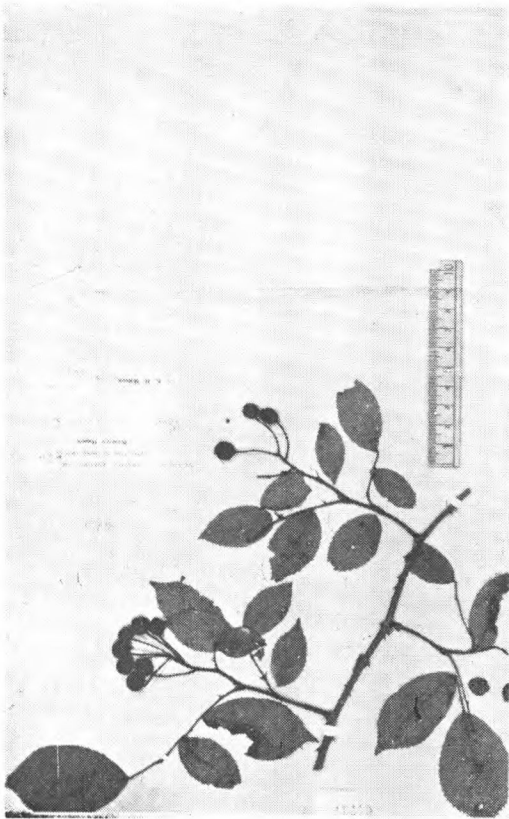
Rosa filipes Rehd. et Wils.
Wils. 1228 四川 (type)



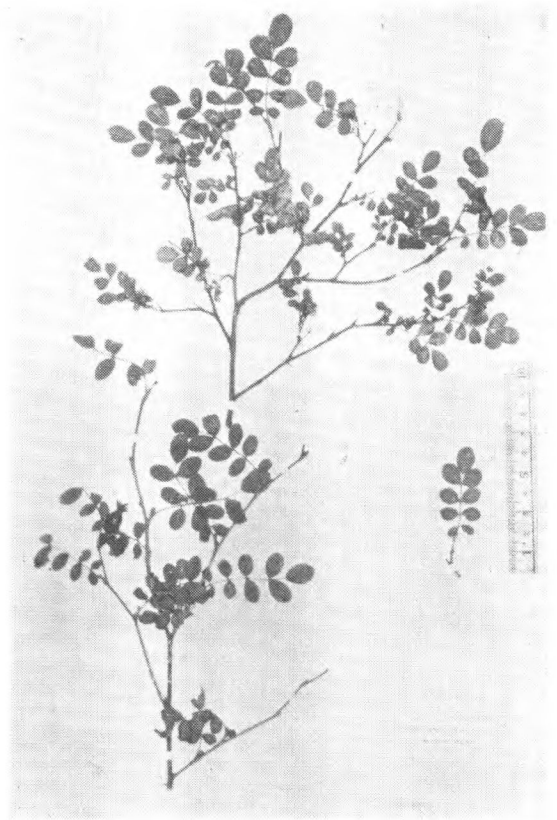
Rosa Forrestii Focke
Forr. 16388A, (isotype) 云南



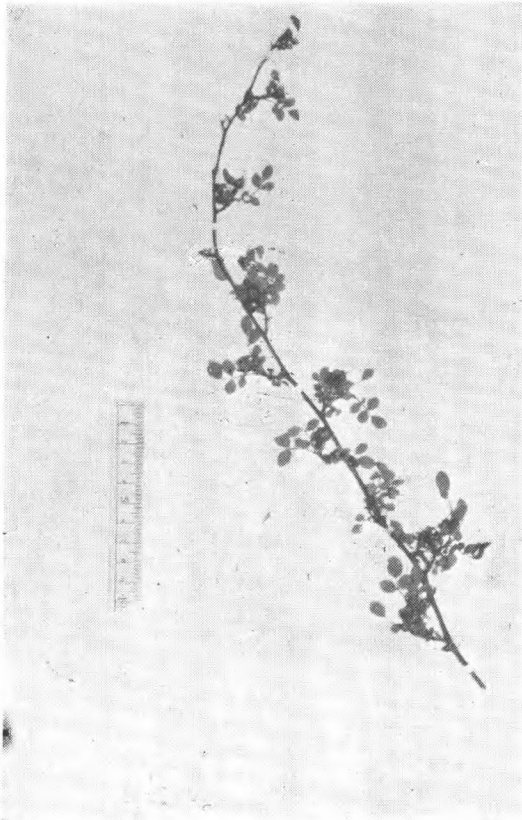
Rosa fukienensis Metcalf
Chung 6425 (type) 福建



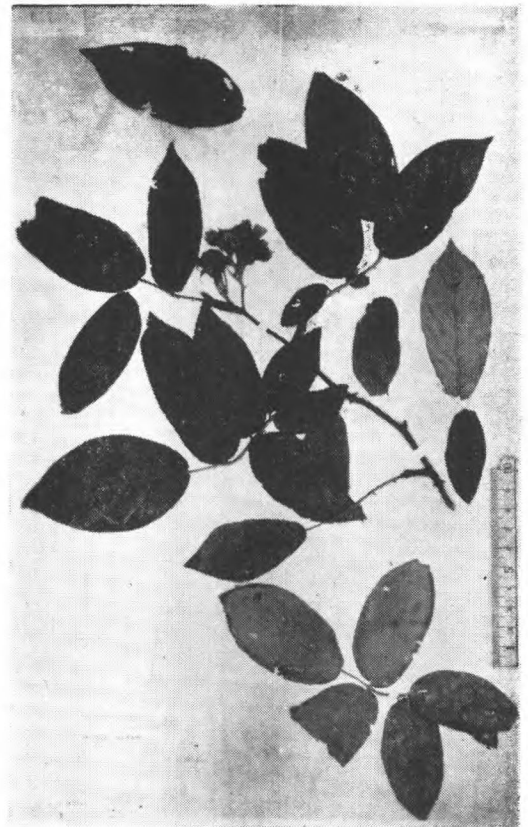
Rosa Gentiliana Lévl. et Van.
Wils. 609. 湖北房县



Rosa Giraldii Crepin var. *venulosa*
Rehd. et Wils.
Wils. 628 (type) 湖北兴山县



Rosa Giraldii Crepin
Wils. 4644 (type) 湖北房县



Rosa glomerata Rehd. et Wils.
Wils. 1306 (type) 西康打箭炉



Rosa graciliflora Rehd. et Wils.
Wils. 3583 (type) 西康打箭炉



Rosa Helenae Rehd. et Wils.
Cult. Arn Arb. 1213.



Rosa Hemsleyana Taechh.
Wils. 272 湖北



R. Henryi Boulenger
H.-M. 606-11714 湖南