

## Historic, archived document

Do not assume content reflects current scientific knowledge, policies, or practices.



VICKS' TULIPS AND  
HYACINTHS, HIGHLAND  
PARK, ROCHESTER

U.S. LIBRARY  
Department of Agriculture  
Washington, D.C.

# VICK'S WHOLESALE

## Bulb Catalogue

JAMES VICK'S SONS  
ROCHESTER, N.Y.

# Wholesale Bulb, Seed and Plant Catalogue

## Autumn of Nineteen Hundred and Eleven

---

These Prices are for Florists and Dealers only

---

ONCE more, with the arrival of the Fall Bulb Season we present our Wholesale Catalogue, and respectfully solicit the orders of all particular buyers. We list herein an excellent line of Bulbs of every kind, so that Florists and Dealers can secure a wide range in variety and color, all of which, in their respective classes, will give abundant satisfaction.

**Our Wide Experience** enables us to secure for Florists and Dealers the very best quality of Bulbs, which we import direct from the most careful and experienced growers in Holland. Our French and Bermuda bulbs are selected with the greatest care.

**Our Trade** continues to grow steadily each year, thus showing that we are caring for the wants of our customers satisfactorily. Florists and Dealers who once use VICK QUALITY stock seldom after risk their success by purchasing elsewhere.

**Our Prices** are very reasonable for the quality of stock we offer. By reason of the immense quantity we import, we are able to offer the highest quality of stock at low prices.

**Our Terms** are liberal. To parties of approved credit we allow 60 days time, or 2 per cent. discount if paid in 10 days from date of invoice, or 3 per cent. if cash is sent with order. Orders from new or unknown customers should be accompanied by cash; or, if credit is desired, satisfactory reference. No goods will be sent C. O. D. unless a partial remittance is made as a guarantee that goods will be accepted. *These prices are subject to change without notice.*

**Our Facilities** are unsurpassed. With splendid freight and express accommodations we can handle orders rapidly. Nine railroads enter Rochester, whose numerous fast freight and express trains enable customers to secure their shipments promptly. Seeds, Bulbs and Plants are entitled to a special express rate which enables customers to save from 20 to 50 per cent. of the regular express charges.

**At prices here quoted** we deliver all goods to the freight or express companies in Rochester, with no charges for boxes, packing or carting. With our excellent equipment for shipping we can be depended upon to send out bulbs in good condition; after that our responsibility ceases.

**Special Notice.** Customers should give on every order, full name, postoffice, freight or express station, county and State; and also advise whether goods are wanted by express or freight. In the absence of such instructions we will ship according to our best judgment, but will not be responsible for the consequences. WE USUALLY SHIP BY EXPRESS, believing that course to be safer and more satisfactory. But sometimes, in the absence of instructions, we ship by freight, especially in cases of heavy shipments, to points easily reached. We have no fixed rule, however, and advise that customers give their preference.

**A Final Request.** Customers should advise whether they desire the varieties shipped when ready, or the entire order held until it can be shipped together. If not advised, we will ship when each kind of bulb is ready. The early Bulbs—Roman Hyacinths, Paper White Narcissus, Freesias, Candidum, Harrisii and Calla Lilies—can be furnished at once; nearly all of these have already arrived. Hyacinths, Tulips, Crocus, etc., in September, while Lilies of the Valley and nearly all other hardy Lilies cannot be shipped until late in October or November.



## Lilium Harrisii

### THE BERMUDA EASTER LILY

Invaluable for florists. Can be forced into bloom by Christmas. Our stock this year is the best we have seen in years. Bulbs are ready for delivery now. Order early. Big demand.

Extra selected bulbs, 9-11 inches, per dozen, \$3.75; per 100, \$23.00.

7-9 inches, per dozen, \$1.50; per 100, \$9.50.

# BULBS FOR FORCING

Not less than six Bulbs of a kind at the dozen price, 25 at the 100, or 250 at the 1000

## Early Roman Hyacinths

One of the most popular varieties for florists and gardeners. Can be brought into bloom in November if planted in August, and a succession of blooms can be had the entire winter. Pure White, 12 to 15 centimetres ( $4\frac{3}{4}$  to  $5\frac{3}{4}$  inches). Per dozen, 40 cents; per 100, \$2.75; per 1000, \$26.00. Pink, per dozen, 40 cents; per 100, \$2.50. Blue, per dozen, 40 cents; per 100, \$2.50.

## Narcissus, Paper White Grandiflorus

Superior in every way to the ordinary Paper White. Very popular for forcing. Can be brought into flower in about 30 to 40 days. Will do well in ordinary house temperature and with no special care. For growing in shallow dishes in pebbles and water they are superior to the Chinese Lilies. Flowers are larger, more attractive in color and possess a more pleasing fragrance. Pure White, 13 centimetres or over, per dozen, 25 cents; per 100, \$1.10; per 1000, \$9.00.

## Double Roman Narcissus

One of the best varieties for forcing. Flowers white, with yellow centers. Deliciously fragrant. Per dozen 20 cents; per 100, \$1.25; per 1000, \$10.00.

## Freesia Refracta Alba

A very valuable and desirable bulbous plant for forcing, rapidly gaining in favor. Each spike bears from five to eight flowers which last a long time after being cut. The flowers are pure white, with a touch of yellow at the inner base, and delightfully fragrant. Extra large size bulbs, ( $\frac{3}{4}$  inch and up). Per dozen, 25 cents; per 100, \$1.50; per 1000, \$12.00. First size bulbs ( $\frac{1}{2}$  to  $\frac{3}{4}$  inch). Per dozen, 20 cents; per 100, 90 cents; per 1000, \$7.50.

## Freesia Purity

The finest strain grown. First size; per dozen, 35 cents; per 100, \$2.25.  
Extra choice; per dozen, 40 cents; per 100, \$2.50.

## Lilium Longiflorum or Japanese Easter Lily

This magnificent lily is a great favorite both for forcing and outdoor planting. It resembles *L. Harrisii* in color and shape, and while it cannot be brought into flower as early as *Harrisii*, it is getting to be a great favorite to follow *Harrisii*. Flowers are pure white, trumpet shape and exquisitely fragrant. We offer only the best imported stock. Price, 7 to 9 inches, extra selected, per dozen, 80 cents; per 100, \$5.50; per 1000, \$50.00.  
First quality, per dozen, 70 cents; per 100, \$5.00; per 1000, \$45.00.

## Lilium Longiflorum Formosum

Strong healthy bulbs, peculiarly unsusceptible to disease. Forces readily. Free bloomer. Especially recommended for florists. A growing favorite.  
6 to 8 inches, per dozen, 60 cents; per 100, \$4.75; per 1000, \$42.50.  
7 to 9 inches, per dozen, \$1.25; per 100, \$7.50; per 1000, \$70.00.

## Lilium Longiflorum Multiflorum

7 to 9 inches; per dozen, 85 cents; per 100, \$5.00; per 1000, \$45.00.

## Lilium Giganteum

Extra fine. Very popular. 7 to 9 inches; per dozen, 90 cents; per 100, \$6.00.

## Lilium Candidum

This variety is sometimes called the Annunciation Lily, or Madonna Lily. Good for forcing, also used for outdoor planting. Its snowy white flowers are borne aloft by long, slender stems. Unsurpassed in stateliness and beauty.  
Choice selected bulbs, per dozen, 60 cents; per hundred, \$4.25; per thousand, \$38.00.



**Vick's Extra Selected Lilies of the Valley  
Are the most Profitable Kind for Florists**

Best imported. Will force quickly and flower abundantly. Pips ready in November.  
Vick's extra selected Berlin, per dozen, 25 cents; per hundred, \$1.50; per thousand, \$14.00  
Vick's extra selected Hamburg, per dozen, 25 cents; per hundred, \$1.25; per thousand, \$11.00

# HYACINTHS

First Size Bulbs, Especially Selected for Our Trade

WE DO NOT import the small or second sized bulbs quoted by many seedsmen and in many cases sold by them as first size. The second or small-sized bulbs will not give satisfaction and will not give "just as good a flower" as claimed, but are offered by some concerns simply to reduce prices, and will certainly disappoint the purchaser.

## Named Hyacinths

There is a growing demand for hyacinths both for forcing and out-door growing. These varieties are recognized as the best for every purpose. They are the pick of over three hundred named kinds.

### SINGLE RED AND ROSE.

	Per Doz.	Per. 100
Amy, bright scarlet, . . . . .	\$0 75	\$5 25
Baron van Tuyl, fine pink . . . . .	75	5 50
Charles Dickens, delicate pink . . . . .	80	6 00
Fabiola (Florence Nightingale) pink, carmine striped . . . . .	75	5 50
Garibaldi, brilliant carmine . . . . .	80	6 00
General Pelissier, brilliant carmine, very early . . . . .	80	6 00
Gertrude, rosy pink . . . . .	75	5 50
Gigantea, blush pink . . . . .	75	5 50
Lady Derby, waxy pink, very large . . . . .	80	6 00
Lord Macaulay, rosy carmine . . . . .	80	6 00
Moreno, fine pink . . . . .	80	6 00
Norma, blush pink . . . . .	80	6 00
Robert Steiger, deep red . . . . .	75	5 50
Roi des Belges, dark red, . . . . .	75	5 50
Rose à Merveille, new, extra fine . . . . .	80	6 00

### SINGLE WHITE.

Alba Superbissima, pure white . . . . .	75	5 50
Albertina, extra fine, pure white . . . . .	75	5 50
Baroness van Tuyl, pure white . . . . .	75	5 50
Grand Blanche, blush white, large bells and spike . . . . .	80	6 00
Grandeur à Merveille, rose shaded . . . . .	75	5 50
La Franchise, waxy white . . . . .	75	5 50
La Grandesse, pure white . . . . .	80	6 00
L'Innocence, pure white . . . . .	80	6 00
Madame Van der Hoop, pure white . . . . .	80	6 00





**SINGLE WHITE.**

	Per Doz.	Per 100
Queen Victoria, pure white . . . . .	80	6 00
Voltaire, creamy white . . . . .	75	5 50

**SINGLE BLUE.**

Baron van Tuyll, dark blue . . . . .	75	5 50
Charles Dickens, light blue . . . . .	80	6 00
Czar Peter, light porcelain blue, large spike . . . . .	80	6 00
Eachantress, beautiful porcelain . . . . .	80	6 00
Grand Lilas, porcelain-lilac . . . . .	80	6 00
Grand Maitre, dark porcelain blue . . . . .	75	5 50
King of the Blues, deep blue . . . . .	75	5 50
La Peyrouse, light porcelain . . . . .	75	5 50
Leonidas, clear blue . . . . .	80	6 00
Marie, dark purple-blue . . . . .	75	5 50
Queen of the Blues, light blue . . . . .	80	6 00
Regulus, light blue . . . . .	75	5 50
Schotel, light porcelain, extra fine . . . . .	80	6 00

**SINGLE YELLOW.**

City of Haarlem, very large, best pure yellow . . . . .	90	7 00
Ida, golden yellow, early . . . . .	80	6 00
King of the Yellows . . . . .	80	6 00
Obelisque, pure yellow . . . . .	80	6 00
Tamerlan, orange-yellow . . . . .	80	6 00

**SINGLE PURPLE.**

Haydn, distinct mauve . . . . .	80	6 00
Sir William Mansfield, purple mauve, large truss . . . . .	80	6 00

**DOUBLE RED AND ROSE.**

	Per Doz.	Per 100
Bouquet Royal, salmon pink . \$0 75	\$0 75	\$5 50
Bouquet Tendre, carmine red . . . . .	80	6 00
Chestnut Blossom, new blush pink . . . . .	80	6 00
Gæthe, light rose . . . . .	80	6 00
Grootvorst, blush pink . . . . .	80	6 00
Le Grand Concurrent, pale rose . . . . .	80	6 00
Lord Wellington, delicate pink . . . . .	80	6 00
Prince of Orange, dark rose . . . . .	80	6 00

**DOUBLE WHITE.**

Bouquet Royal, pure white . . . . .	80	6 00
Grootvorstin, creamy white . . . . .	75	5 50
Isabelle, rosy white . . . . .	80	6 00
La Tour d' Auvergne, pure white . . . . .	80	6 00
La Virginite, blush white . . . . .	75	5 50
Non plus ultra, pure white . . . . .	80	6 00
Prince of Waterloo, pure white . . . . .	80	6 00

**DOUBLE BLUE.**

Bloksberg, light porcelain blue . . . . .	80	6 00
Charles Dickens, lilac blue . . . . .	80	6 00
Crown Prince of Sweden, violet blue . . . . .	80	6 00
Garrick, bright blue . . . . .	80	6 00
General Antinck, light blue . . . . .	80	6 00
General Kohler, bright blue, large . . . . .	80	6 00

**DOUBLE YELLOW.**

Jaune Supreme, bright yellow . . . . .	80	6 00
Sir Rowland Hill, pure yellow . . . . .	80	6 00

**UNNAMED HYACINTHS.**

Having made a special contract with one of the largest and most reliable bulb growers in Holland for the first selections from his crop, we are fully assured the shipment of Unnamed Hyacinths will be of superior quality, and equal to many of the *named* bulbs which come to this market.

Not less than six bulbs at the dozen rate, nor less than twenty-five at 100 rate.

Single Mixed Rose	Doz	100	1000	Double Mixed Rose	Doz	100	1000
and Red . . . . .	.35	2 25	21 00	and Red . . . . .	.40	2 50	23 50
“ “ Dark Red . . . . .	.35	2 25	21 00	“ “ Dark Red . . . . .	.40	2 50	23 50
“ “ Rose and Pink . . . . .	.35	2 25	21 00	“ “ Rose and Pink . . . . .	.40	2 50	23 50
“ “ White, all shades . . . . .	.35	2 25	21 00	“ “ White, all shades . . . . .	.40	2 50	23 50
“ “ Pure White . . . . .	.35	2 25	21 00	“ “ Pure White . . . . .	.40	2 50	23 50
“ “ Rosy and Cream White . . . . .	.35	2 25	21 00	“ “ Rosy and Cream White . . . . .	.40	2 50	23 50
“ “ Blue, all shades . . . . .	.35	2 25	21 00	“ “ Blue, all shades . . . . .	.40	2 50	23 50
“ “ Dark Blue . . . . .	.35	2 25	21 00	“ “ Dark Blue . . . . .	.40	2 50	23 50
“ “ Light Blue . . . . .	.35	2 25	21 00	“ “ Light Blue . . . . .	.40	2 50	23 50
“ “ Yellow . . . . .	.35	2 25	21 00	“ “ Yellow . . . . .	.40	2 50	23 50
“ “ all colors . . . . .	.35	2 25	21 00	“ “ all colors . . . . .	.40	2 50	23 50

# Vick's Superfine Single Tulips



Our collection of Tulips embraces all the Standard Varieties, together with the latest introductions



Not less than six bulbs of each variety at the dozen rate, nor less than twenty-five at the 100 rate, nor less than 250 at the 1000 rate.

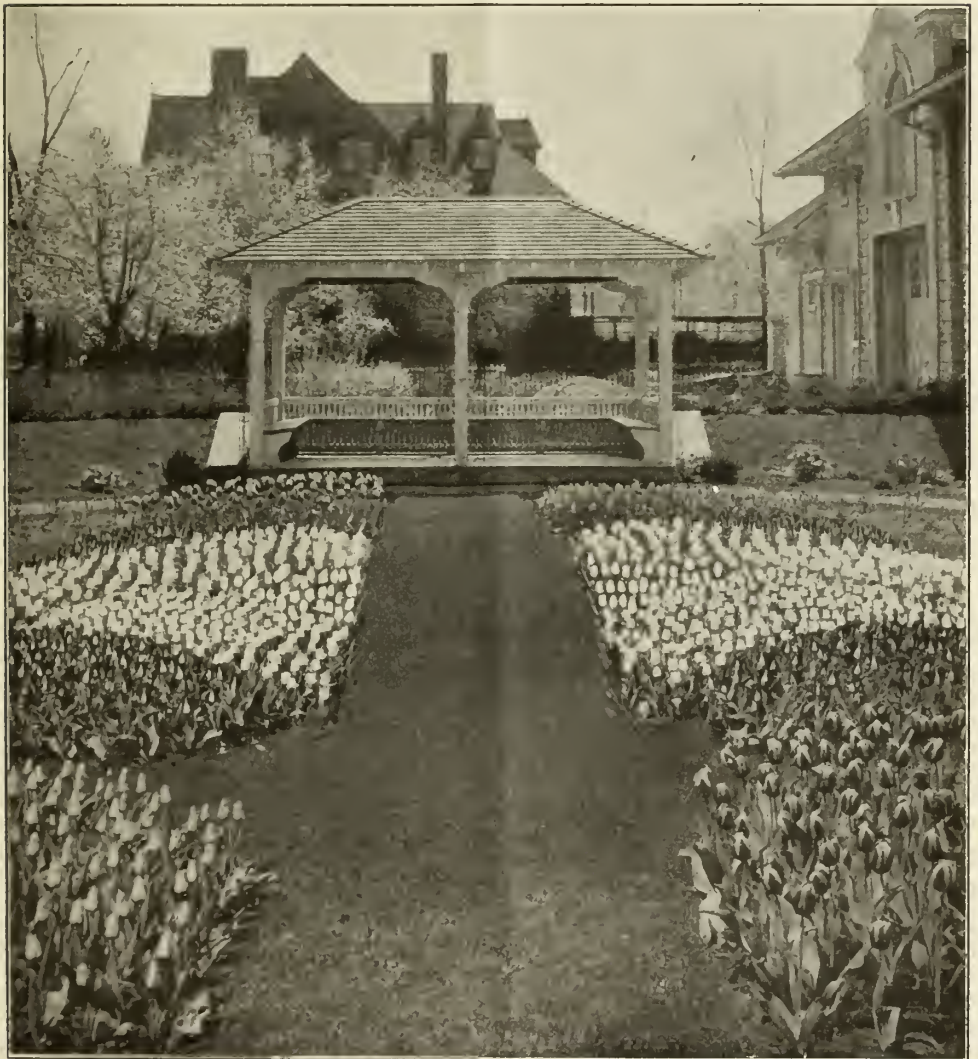
## NAMED SINGLE EARLY TULIPS

The Varieties marked (\*) are superior for forcing.

	Per doz.	Per 100	Per 1000
Artus, bright scarlet, good bedder . . . . .	\$0 20	\$0 95	\$8 00
* Belle Alliance, (Waterloo) scarlet, large flower, sweet scented . . . . .	30	1 80	15 50
Brutus, crimson . . . . .	20	1 20	10 50
* Canary Bird, yellow, early . . . . .	20	95	8 00
* Chrysolora, golden yellow . . . . .	15	80	6 50
* Cottage Maid, rose and white, pointed petals forces slowly . . . . .	20	95	8 00
* Couleur Cardinal, scarlet, one of the very best, forces slowly . . . . .	30	1 75	15 00
Couleur ponceau, crimson and white . . . . .	20	90	7 50
Crimson King, fine crimson, large flower . . . . .	20	95	8 00
Duchesse de Parma, red, with ruffled yellow edge . . . . .	20	1 00	8 50
* Duc van Thol, Scarlet . . . . .	25	1 60	13 50
“ “ Crimson . . . . .	20	1 00	8 50
* “ “ Cochineal extra fine . . . . .	35	2 25	20 00
* “ “ White, maximus . . . . .	20	90	7 50
* Dusart, fine large dark scarlet, pointed petals . . . . .	30	1 75	15 00
Fire Flame . . . . .	25	1 25	11 00
* Flamingo, light and dark rose shading . . . . .	50	3 25	29 00
* Grace Darling, scarlet extra fine, large cup . . . . .	45	3 00	27 00
* Joost van Vondel, red and white . . . . .	25	1 50	12 50
* Joost van Vondel, a splendid white . . . . .	35	2 25	20 00
* Keizerskroon, red, golden edge . . . . .	20	1 15	10 00
* L' mmaculee, pure white . . . . .	15	75	6 50
* La Reine, (Queen Victoria) beautiful rosy white . . . . .	15	75	6 50
* Mon Tresor, large, deep yellow . . . . .	20	1 20	10 50
Pink Beauty, carmine and white, extra fine . . . . .	50	3 50	30 00
* Pottelbakker, white . . . . .	20	1 20	10 50
* “ scarlet . . . . .	30	1 75	14 50
* “ yellow, occasionally striped red . . . . .	20	1 00	8 50
* President Lincoln, violet . . . . .	35	2 25	19 00
* Prince of Austria, beautiful orange, fragrant . . . . .	25	1 55	13 00
Princess Marianne, rose shaded . . . . .	20	95	8 00
* Princess Helena, snow white, large flowers . . . . .	35	2 10	18 00
* Proserpine, beautiful rose crimson . . . . .	35	2 30	20 00
* Purple Crown, dark purple, excellent . . . . .	20	1 00	8 50
Queen of Scarlets, extra fine . . . . .	20	1 20	10 50
Rembrandt, bright scarlet . . . . .	35	2 10	18 00
Rosamundi (Huikman), pink and white . . . . .	20	95	8 00
* Rose Grisdelin, pink and white . . . . .	20	90	7 50
* Rose Luisante, pink . . . . .	30	1 75	15 00
Standard Gold, red and golden . . . . .	40	2 55	23 00
Standard Royal, white and red striped . . . . .	25	1 65	14 00
* Thomas Moore, orange, a beautiful color . . . . .	20	90	7 50
* Vermilion Brilliant, bright red . . . . .	30	2 10	18 00
* White Hawk, pure white, splendid for forcing . . . . .	25	1 65	14 00
White Swan . . . . .	20	95	8 00
* Yellow Prince, fine yellow, sweet scented . . . . .	20	90	7 50

**NAMED EARLY SINGLE TULIPS—Continued**

	Per Doz.	Per 100	Per 1000
Extra Superfine, mixed . . . . .	\$ 20	\$ 90	\$7 50
First Quality, mixed . . . . .	15	80	6 50
Unnamed in Separate Colors, white . . . . .	20	90	7 50
“ “ “ “ pink . . . . .	20	90	7 50
“ “ “ “ yellow . . . . .	20	90	7 50
“ “ “ “ red . . . . .	20	90	7 50
“ “ “ “ variegated . . . . .	20	90	7 50



SINGLE EARLY TULIPS IN A ROCHESTER GARDEN

# Vick's Superfine Double Tulips

## EARLY VARIETIES

The varieties marked (\*) are superior for forcing.

	Per doz	Per 100	Per 1000
Alba maxima . . . . .	\$0 20	\$1 00	\$8 50
*Anna Roozen, deep pink, very fine . . . . .	40	2 75	
Arabella, carmine-pink . . . . .	30	1 85	16 00
*Crown of Roses, best deep pink . . . . .	40	2 35	21 00
*Crown of Gold, finest yellow shaded orange . . . . .	30	1 75	15 00
Duc van Thol, red and yellow . . . . .	15	85	7 00
Duke of York, cherry and white, early . . . . .	20	95	8 00
Gloria Solis, bronze, orange and crimson; early . . . . .	25	1 25	11 00
*Imperator rubrorum, scarlet, finest of its kind . . . . .	30	1 75	15 00
La Candeur, white; early . . . . .	25	1 25	11 00
LeBlason, rose and white, early . . . . .	20	1 05	9 00
*Lac Van Haarlem, violet . . . . .	40	2 50	
Leonardo da Vinci, orange red, yellow bordered . . . . .	40	2 50	
*Lord Beaconsfield, deep cherry rose . . . . .	40	2 50	
*Lord Roseberry, rose; beautiful . . . . .	40	2 35	21 00
*Murillo, pink and white; early . . . . .	20	1 00	8 50
*Princess Beatrice, rose . . . . .	40	2 35	21 00
Purple Crown, splendid dark velvety-crimson; early . . . . .	20	1 10	9 50
Regina Rubrorum, red striped with creamy yellow; early . . . . .	35	2 00	17 50
*Rex Rubrorum, scarlet; early . . . . .	25	1 50	12 50
Rose Blanche, pure white, early . . . . .	20	95	8 00
*Rosine, rosy white . . . . .	30	1 75	15 00
*Rubra maxima, best dark red . . . . .	20	1 15	10 00
*Salvator Rosa, deep rose . . . . .	20	1 15	10 00
Titian, deep red, yellow edge . . . . .	30	1 75	15 00
*Tournesol, red and yellow . . . . .	30	1 85	16 00
* " yellow, true . . . . .	30	1 75	15 00
Velvet Gem, dark brown . . . . .	30	1 75	15 00
Superfine Double Mixture, early sorts . . . . .	20	90	7 50

## LATE VARIETIES

While there has been a rapid increase in the popularity of all kinds of bulbs during the last few years, among no other classes have there been such an increase in demand as for the Late Flowering kinds. We are devoting considerable attention to these various classes and recommend them to the careful consideration of gardeners, florists and dealers.

	Per doz	Per 100	Per 1000
Belle Alliance, violet and white . . . . .	\$0 30	\$1 85	\$16 00
Blue Flag, violet and white . . . . .	30	1 85	16 00
Mariage de ma Fille, crimson and white . . . . .	35	2 25	20 00
Paecony, gold, yellow and red . . . . .	20	1 20	10 50
Paecony, scarlet . . . . .	20	1 20	10 50
Purple, white border . . . . .	20	95	8 00
Yellow Rose, pure yellow, sweet scented, fine . . . . .	20	95	8 00
Double Late Superfine, mixed . . . . .	20	90	7 50

**VICK'S SUPERFINE STRAIN DARWIN TULIPS**

Too much praise cannot be given to this new Late Flowering class, which excel in brilliancy of colors and perfection of flowers. They are very robust and will grow anywhere and produce splendid results. While they are especially adapted for outdoor growing, they can be grown for cut flowers under glass if forced slowly. We recommend these named varieties as our selection of over fifty kinds.

	Per doz.	Per 100	Per 1000
Albert Kellogg (Early Dawn) violet rose . . . . .	\$0 30	\$1 75	\$15 00
Baron de la Tonnaye, carmine rose . . . . .	30	1 85	16 00
Cara Butt, salmon pink . . . . .	50	3 50	30 00
Europe (Salmon King) fiery red . . . . .	40	2 55	23 00
Glory, brilliant scarlet . . . . .	35	2 25	20 00
Glow (Claude Gillot) dark red . . . . .	40	2 55	23 00
Gretchen, soft rose . . . . .	30	1 75	15 00
LaCandeur, white . . . . .	40	2 50	22 00
Loveliness, rose . . . . .	35	2 25	20 00
Madame Krelage, rose . . . . .	35	2 25	20 00
Mr. Farnecombs Sanders, splendid scarlet . . . . .	50	3 50	30 00
Painted Lady, white . . . . .	30	2 00	18 00
The Sultan, black . . . . .	25	1 45	12 00
Extra fine Darwin, Mixture . . . . .	20	1 05	19 00

**LATE OR MAY FLOWERING TULIPS**

During the last few years there has been an immense sale on many of these varieties. They surpass the earlier kinds for outdoor growing because of their length of stems. Many of them have large, open flowers, while others, especially the so-called "Botanical Tulips," though small, are exquisitely beautiful.

	Per doz.	Per 100	Per 1000
Bizarres, yellow ground, mixed varieties . . . . .	\$0 15	\$0 90	\$ 7 00
Roses, white ground, mixed varieties . . . . .	20	1 20	10 00
Violets, white ground, mixed varieties . . . . .	20	1 20	10 00
Bizarres, Roses, and Violets, mixed . . . . .	20	1 00	8 00
Breeders, fine mixed . . . . .	20	1 00	8 00
Bouton d'or (Ida, Golden Beauty) . . . . .	15	90	7 50
Clusiana, white and red striped . . . . .	45	3 00	28 00
Elegans, white, splendid . . . . .	35	2 10	18 00
Elegans, carmine . . . . .	25	1 65	14 00
Florentine odorato, yellow . . . . .	20	1 10	9 00
Gesneriana spathulata, brilliant scarlet . . . . .	20	1 20	10 00
Gesneriana aurantiaca, orange . . . . .	30	1 75	15 00
Gesneriana lutea, yellow . . . . .	30	1 75	15 00
Gesneriana rosea, rose . . . . .	30	1 75	15 00
Golden Crown, yellow and rose . . . . .	15	75	6 00
Isabella (Shandon Bells, Blushing Bride) cream turning to carmine . . . . .	20	1 10	9 50
Macropsila, sweet-scented scarlet . . . . .	15	85	7 00
Picotee (Maiden's Blush) pure white, edged rose . . . . .	20	1 10	9 00
Persica, yellow and brown . . . . .	40	2 75	25 00
Primrose, beautiful . . . . .	25	1 25	10 00
Retroflexa, yellow . . . . .	20	1 25	11 00
Striped Beauty, extra fine . . . . .	35	2 00	
Vitellina, sulphur yellow . . . . .	35	2 25	20 00
All colors and classes mixed . . . . .	20	1 00	8 00

**PARROT TULIPS**

Very popular on account of their brilliant colorings and peculiar form of flower.

	Per doz.	Per 100	Per 1000
Admiral de Constantinople, red . . . . .	\$0 15	\$1 00	\$8 00
Café Brun, rich brown . . . . .	15	1 00	8 00
Cramosi Brilliant, scarlet . . . . .	15	1 00	8 00
Gloriosa, yellow and red . . . . .	15	1 00	8 00
Lutea, yellow . . . . .	15	1 00	8 00
Markgraaf, red and yellow . . . . .	15	1 00	8 00
Perfecta, red striped . . . . .	15	1 00	8 00
Extra Superfine Mixture . . . . .	15	75	6 75



## Vick's Selected Single Narcissus

Extremely popular for forcing and out door growing. Perfectly hardy. Will grow anywhere.

	Per doz	Per 100	Per 1000
Bicolor Horsfieldii, yellow trumpet, white perianth . . . . .	\$0 25	\$1 35	\$11 00
“ Empress. One of the very best, yellow and white, first size . . . . .	25	1 50	12 00
“ “ Double nose bulbs. Will produce 2 or 3 blooms . . . . .	30	1 75	15 00
“ Grandis maximus, white perianth, broad petals . . . . .	20	1 10	9 50
“ Princeps maximus, primrose perianth, yellow trumpet . . . . .	20	95	7 00
“ “ “ Double nose bulbs . . . . .	20	1 10	9 00
Bicolor Victoria, creamy white perianth, yellow trumpet, fine . . . . .	20	1 25	10 00
“ “ double nose bulbs. Will produce 2 or 3 blooms . . . . .	30	1 75	15 00
Biflorus, white, yellow cup, twin flowers . . . . .	20	85	7 00
Emperor, deep yellow, large, fine, first size . . . . .	25	1 50	12 00
“ double nose bulbs, extra fine . . . . .	30	1 75	15 00
Golden Spur, fine yellow, large flower, early, first size . . . . .	25	1 50	12 00
“ “ double nose bulbs . . . . .	35	2 10	18 00
Henry Irving, yellow, fine, early . . . . .	25	1 40	11 50
Incomparable Sir Watkin, rich golden yellow, dark cup, first size . . . . .	25	1 40	11 50
“ “ “ double nose bulbs . . . . .	30	1 75	15 00
Mrs. Langtry, white, very beautiful . . . . .	15	90	7 50
Poeticus, “Pheasant's Eye,” pure white perianth, yellow cup, edged with crimson. Not for forcing . . . . .	15	65	5 00
Poeticus Burbidgei. Early; white, cup edged orange . . . . .	15	65	5 00

**VICK'S SELECTED SINGLE NARCISSUS—Continued**

	Per doz	Per 100	Per 1000
Poeticus Ornatus, pure white, sweet-scented, good forcer . . . . .	15	75	6 00
Spurius coronatus, pure yellow . . . . .	20	1 25	10 00
Trumpet Major, golden yellow, standard single Daffodil . . . . .	20	1 00	8 00

French Trumpet Major.	Special strain for early forcing. Very desirable.	Per doz.	Per 100	Per 1000
		\$0 25	\$1 50	\$12 00

Large Trumpet varieties mixed . . . . .	20	1 10	9 00
Medium " " " . . . . .	15	80	6 00

**POLYANTHUS NARCISSUS**

The flowers are produced in clusters or trusses. Not hardy in this climate, but for flowering in pots in the house they are unsurpassed.

	Per doz	Per 100	Per 1000
Double Roman, white with yellow center . . . . .	\$0 20	\$1 25	\$10 00
Grand Monarque, white and yellow . . . . .	25	1 50	12 00
Grand Soliel d'Or, bright yellow . . . . .	25	1 50	12 00
Her Majesty, beautiful white . . . . .	25	1 50	12 00
Newton, fine yellow . . . . .	25	1 50	12 00
Paper White, grandiflorus (see description, page 4) . . . . .	25	1 10	9 00
All colors mixed . . . . .	20	1 25	10 00

**DOUBLE NARCISSUS**

	Per doz	Per 100	Per 1000
Albo pleno odorato, white, fragrant . . . . .	\$0 15	\$0 65	\$5 50
Incomparable, light yellow . . . . .	15	95	8 00
Orange Phoenix, white and orange . . . . .	25	1 25	10 00
Sulphur Crown or Silver Phoenix . . . . .	25	1 50	12 00
VonSion, well known as "Double Yellow Daffodil," first size . . . . .	20	1 25	10 00
VonSion, extra selected . . . . .	25	1 50	12 50
VonSion, double Nose, extra large bulbs, producing 2 to 3 flowers . . . . .	30	2 10	19 00
Extra fine mixed . . . . .	20	1 00	9 00

**JONQUILS**

Valued for their lovely golden and deliciously sweet-scented flowers. They are perfectly hardy and flower very early in the spring. Excellent for house blooming.

	Per doz	Per 100	Per 1000
Largest Double, sweet-scented, golden yellow . . . . .	\$0 35	\$2 00	\$17 00
Single, sweet-scented, golden yellow . . . . .	15	75	5 00
Tenuior, Silver Jonquil . . . . .	35	2 00	18 00
Campernel, (Great Jonquil), yellow, fragrant . . . . .	15	65	5 00
Odorous rugulosus (Improved Campernel) . . . . .	20	75	6 00

**CHINESE SACRED LILY**

**JOSS FLOWER.**

Special Chinese grown Bulbs.

A variety of the Polyanthus Narcissus, growing best in a wet soil. Excellent for retail trade; in growing demand through the season. When grown in pebbles and water it presents a beautiful appearance.

Per dozen . . . . .	\$0 60
Original basket containing 30 bulbs . . . . .	1 25
Four baskets in a hamper . . . . .	4 50

**OXALIS**

An interesting class of small bulbs, desirable for winter flowering in pots and hanging baskets, producing an abundance of bloom.

	Per Doz	Per 100	Per 1000
Bermuda Buttercup, Per Doz			
large size . . . . .	\$0 20	\$1 10	\$9 00
Bowii, bright rose . . . . .	25	1 25	10 00
Grand Duchess, pink . . . . .	20	1 25	
" " lavender . . . . .	20	1 25	
" " white . . . . .	20	1 25	
Versicolor, variegated . . . . .	15	50	4 00
Finest mixed . . . . .	10	50	3 50



EARLY-FLOWERING CROCUS

## Vick's Named and Mixed Crocus

There is a rapidly growing demand for Crocus both for forcing and outdoor growing. Last year we could not get enough stock to fill our orders. This year we have ordered nearly double the quantity used last year.

Not less than 100 sold at these prices.

	Per 100	Per 1000
Blue and Purple . . . . .	\$0 40	\$3 25
White . . . . .	40	3 25
Striped and Variegated . . . . .	40	3 25
All colors mixed . . . . .	40	3 25
Large Yellow, mammoth size		
Per doz. 20 cts.	90	7 50
"    "    First size . . . . .		
Per doz. 15 cts.	70	5 50
"    "    Second size . . . . .		
Per doz. 15 cts.	50	4 00
Cloth of Gold " 15 cts.	50	4 00
Cloth of Silver " 15 cts.	60	5 00

### EXTRA LARGE NAMED BULBS.

The choicest of all the named varieties.

- Albion, striped.
- Baron Von Brunow, dark blue.
- Grand Concurrent, white.
- King of the Blues, purple.
- King William, dark.
- Lord Palmerston, blue.
- Mammoth, white.
- Margot, light blue, extra.
- Mont Blanc, pure white.
- Non Plus Ultra, variegated.
- President Grant, striped.
- Purpurea grandiflora, extra.
- Queen Victoria, white.
- Sir Walter Scott, striped.

Per dozen, 15 cents; per 100, 65 cents;  
per 1000, \$5.50.



Not less than twenty-five bulbs at the hundred price.

### Allium Neapolitanum

An excellent variety for winter flowering, pure white, with green stamens; extensively used by florists for forcing for cut flowers Per dozen, 10 cents; per 100, 50 cents; per 1000, \$4.50.

### Anemone

The Anemone in bloom is a most beautiful flower. Both double and single are desirable.

	Per doz.	Per 100	Per 1000
Single, best mixed colors . . . . .	\$0 15	\$0 60	\$4 50
Double, best mixed colors . . . . .	15	75	6 00
Single pure white, the Bride . . . . .	15	60	5 00
Single Scarlet . . . . .	15	80	7 00
Double Scarlet . . . . .	20	1 25	11 00

### Chionodoxa (Glory of the Snow)

This family increases in popularity as it becomes better known. For pot culture in the house or for early spring outdoor use they are very gratifying.

	Per doz.	Per 100	Per 1000
Lucilæ, blue and white . . . . .	\$0 15	\$0 75	\$ 6 50
Sardensis, deep blue . . . . .	20	1 00	8 00

### Fritillaria (Guinea Hen Flower)

Very early flowering bulbs suitable for either garden or pot culture, bearing large drooping bell-shaped flowers of various colors, checkered and variegated. Per doz. Per 100 Per 1000

Meleagris, mixed . . . . .	\$0 15	\$0 75	\$ 5 50
----------------------------	--------	--------	---------

### Grape Hyacinths

Blue Grape Hyacinth, small grape-like flowers . . . . . \$0 15 \$0 75 6 00  
 White Grape Hyacinth, like the above in form, but clear white . . . . . 20 1 10 9 00  
 Feathered Hyacinth, a pretty feathery flower, curious and interesting 15 75 6 00

### Leucojum

Like monster Snowdrops. These are among the earliest of our spring flowers, and can also be forced in pots for winter bloom.

	Per doz.	Per 100	Per 1000
Vernum (Spring Snow-flake) . . . . .	\$0 20	\$1 25	\$11 00

### Puschkinia

One of the earliest of the spring flowering plants, opening its handsome flowers with Snowdrop and Crocus. The flower spikes resembles those of the Hyacinth. For planting in masses the Puschkinia is unexcelled by any other bulb, the large white flowers with blue stripe being particularly effective. It will thrive in any garden border, and is also desirable for potting for house blooming.

	Per doz.	Per 100	Per 1000
Libanotica . . . . .	\$0 20	\$1 00	\$ 8 00

### Snowdrop

(GALANTHUS NIVALIS.)

	Per doz.	Per 100	Per 1000
Single . . . . .	\$0 15	\$0 75	\$ 6 00
Double . . . . .	20	1 00	9 50
Elwesii, (Giant Snowdrop) finest of all for cutting . . . . .	15	75	6 00

### Triteleia

Star-shaped flowers, an inch in diameter, pure white, beautifully lined with celestial blue. Fine for potting. They are also quite hardy and can be planted in open ground, making fine bloom for early spring.

	Per doz.	Per 100	Per 1000
Triteleia uniflora . . . . .	\$0 15	\$0 60	\$ 5 00

## Crown Imperial

This is one of those hardy and useful plants about which there is no mystery or difficulty. Once put in the ground, and having obtained a fair start, it will continue to grow and increase from year to year.

	Each	Per doz	Per 100
Mixed varieties . . . . .	\$0 10	\$0 75	\$5 00

## Colchicum (Autumn Crocus)

Autumnale, rose . . . . .	\$0 50	\$3 50
Autumnale, Lilac . . . . .	75	4 00



## Scillas

The Scilla is the brightest prettiest and hardiest of the early spring flowers. When the Croci are in bloom the little modest Scilla Sibirica may be seen throwing up a little cluster of flowers of the most intense blue imaginable. The *S. alba* should not be missed wherever the blue variety is planted; either in design or mixed, the effect is most striking. No bulb is more hardy or more competent to take care of itself.

*Amœna* (Siberica) bright intense blue, per dozen, 20 cents; per hundred, \$1.00; per thousand, \$8.00.

*Præcox alba*, pure white, per dozen, 20 cents; per hundred, \$1.10; per thousand, \$9.00.

## Sparaxis

A very distinct and interesting group.

The mixture is conspicuous by the brilliant colors, almost every shade of crimson, scarlet and white being found.

Fine mixed, per dozen, 10 cents; per hundred, 50 cents; per thousand, \$4.50.

## Ornithogalum Arabicum

When grown in the garden they make an interesting and pretty sight. They also make an elegant greenhouse or window decoration, and florists grow them largely for their value as cut flowers. Being robust and hardy the bloom remains perfect for many weeks. Per dozen 25 cents; per 100, \$1.25; per 1000, \$10.00.

ORNITHOGALUM ARABICUM

# VICK'S

# LILIES



L. ELEGANS  
INCOMPARABLE

## LILIUM LONGIFLORUM

## SPECIOSUM RUBRUM

	Per Doz	Per 100
Lilium auratum, 8 to 9 inch	\$1 10	\$7 50
Auratum Platyphyllum . . .	1 25	9 00
Canadense . . . . .	1 00	7 00
Candidum . . . . .	(See page 4)	
Elegans atrosanguineum . . .	1 75	12 00
Elegans atropurpureum . . .	1 35	10 00
Elegans Batemani . . . . .	1 25	9 00
Elegans, best light red . . .	1 25	9 00
Elegans Incomparable . . . .	1 25	9 00
Elegans Wallacei . . . . .	1 35	10 00
Elegans, fine mixed . . . . .	1 15	8 00
Giganteum . . . . .	(See page 4)	
Hansonii . . . . .	3 50	
Harrisii (Bermuda Easter) (See page 3)		
Humboldtii . . . . .	2 50	

Longiflorum Japonicum . . . .	(See page 4)	
Longiflorum Formosum . . . .	(See page 4)	
Longiflorum Multiflorum . . . .	(See page 4)	
Lancifolium or Speciosum:		
Album . . . . .	1 25	8 50
Rubrum . . . . .	1 25	8 00
Melpomene . . . . .	1 25	8 00
Leichtlinii Yellow . . . . .	2 50	15 00
Leichtlinii Maximowiczii . . .	2 50	18 00
Pardalimum . . . . .	2 75	20 00
Parryi . . . . .	2 75	20 00
Phillipense . . . . .	2 00	15 00
Superbum (Turk's Cap) . . . .	1 25	9 00
Tenuifolium . . . . .	1 25	9 00
Tigrinum Splendens (Single Tiger)	90	5 50
Tigrinum fl.pl.(Double Tiger)	1 00	6 00

## CALLA LILIES — Dry Bulbs.

Superior for forcing. Our bulbs are thoroughly ripened and come direct from one of the largest growers in the world.

Large bulbs, 4¼ to 5¼ inches,	\$1 00	\$6 00
Selected bulbs, 5¼ to 6 " "	1 25	8 50
Mammoth bulbs, 6 in. and up	1 75	12 00

## Ranunculus

	Per doz.	Per 100	Per 1000
Best mixed French . . . . .	\$0 10	\$0 50	\$4 00
Best mixed Persian . . . . .	10	60	5 00
Best mixed Turban . . . . .	10	60	5 00

## Iris

The Iris, or Flowering Flag, or *Fleur de lis* of the French, is a well known family of hardy border flowers. Bloom from May to July. (For Japan and German Iris see page 20.)

	Per doz	Per 100	Per 1000
Anglica, mixed sorts	\$0 15	\$0 75	\$6 00
Hispanica, mixed var.	10	35	2 00
Pavonia . . . . .	15	75	6 00

## Ixia

Best mixed . . . . .	10	50	3 50
----------------------	----	----	------

## Vick's Velvet Lawn Grass

Made up of the best grades of American and foreign grasses. Contains no weeds and no chaff. Weighs 20 pounds per bushel. Will make a good sod in a few weeks which will withstand frost and drought. No cheap fillers used in making this mixture. Could not be better if we were to double the price. Used almost exclusively by the leading New York landscape gardeners.

Per lb. Per bu.  
 Price . . . . . \$0 25 \$4 50  
 (Subject to market changes)

## Big Money in Mushrooms

If you use Vick's Pure Culture Spawn

No more trouble on account of dead Spawn. We have tested all the leading kinds and have proved conclusively that Pure Culture Spawn, as developed in this country, is superior to any other kind. We have thoroughly tested out the various grades of Pure Culture Spawn and know that the stocks we offer here are unsurpassed; simply be sure that your beds are in good condition, use Vick's Pure Culture Spawn and have a good crop every time.

Pure Culture Spawn, Per brick. 100 bricks  
 First Transfer . . . . . \$0 15 \$11 00  
 Pure Culture Direct Spawn 20 17 00

# SMALL FRUITS

Six plants of a kind at dozen rate; fifty at 100 rate; 500 at 1000 rate.

The trade supplied with the best new and leading varieties of Small Fruits, in large or small quantities. We have a full stock, but for want of space catalogue only the leading varieties. For larger quantities prices will be made on application.

### BLACKBERRIES.

	Doz.	100	1000
Agawam . . . . .	\$0 30	\$1 50	\$12 00
Early Harvest . . . . .	30	1 50	12 00
Early King . . . . .	35	1 75	15 00
Eldorado . . . . .	35	1 75	15 00
Erie . . . . .	30	1 50	12 00
Kittatinny . . . . .	30	1 50	12 00
Lawton . . . . .	30	1 50	12 00
Minnewaski . . . . .	35	1 75	15 00
<b>Rathbun</b> . . . . .	30	1 50	12 00
Snyder . . . . .	30	1 50	12 00
Taylor . . . . .	30	1 50	12 00
Wilson . . . . .	30	1 50	12 00

### CURRENTS.

	Each	Doz.	100
Black Naples . . . . .	10	\$0 85	\$5 00
Cherry, red . . . . .	10	85	5 00
Fay's Prolific, red . . . . .	10	85	5 00
La Versailles . . . . .	10	85	5 00
North Star . . . . .	10	85	5 00
Pomona . . . . .	10	85	5 00
Prince Albert . . . . .	10	85	5 00
Red Cross . . . . .	10	85	5 00
Red Dutch . . . . .	10	85	5 00
Victoria . . . . .	10	85	5 00
White Grape . . . . .	10	85	5 00
Wilder . . . . .	10	85	5 00

### GOOSEBERRIES.

	Each	Doz.	100
Chautauqua . . . . .	30	\$3 00	
Downing . . . . .	10	1 00	
Golden Prolific . . . . .	30	3 00	
Houghton . . . . .	10	85	600
Industry . . . . .	15	1 40	
Pearl . . . . .	10	1 00	
Red Jacket . . . . .	15	1 40	
Smith's Improved . . . . .	10	1 00	
Triumph . . . . .	30	3 00	

### RASPBERRIES — RED.

	Each	Doz.	100	1000
Columbian . . . . .	05	30	\$1 50	\$12 00
Cuthbert . . . . .	05	25	1 25	10 00
Golden Queen . . . . .	10	45	2 00	
Loudon . . . . .	10	45	2 00	15 00
Marlboro . . . . .	05	30	1 50	12 00
Miller's Red . . . . .	10	45	2 00	15 00
Ruby . . . . .	10	75	3 50	25 00
Shaffer . . . . .	10	30	1 50	12 00

### RASPBERRIES — BLACK.

	Each	Doz.	100	1000
Black Diamond . . . . .	10	50	\$2 00	\$12 00
Cumberland . . . . .	10	50	2 00	12 00
Gregg . . . . .	10	50	2 00	12 00
Hilborn . . . . .	10	35	1 25	10 00
Kansas . . . . .	10	35	1 25	10 00
Mills . . . . .	10	50	2 00	12 00
Ohio . . . . .	10	35	1 25	10 00
Palmer . . . . .	10	35	1 25	10 00
Souhegan . . . . .	10	35	1 25	10 00

### GRAPES.

	Each	Doz.	100
Agawam . . . . .	12	\$ 90	\$ 5 00
Brighton . . . . .	12	1 00	5 50
Campbell's Early . . . . .	15	1 40	10 00
Catawba . . . . .	10	75	4 00
Concord . . . . .	10	65	3 00
Clinton . . . . .	10	75	4 00
Delaware . . . . .	12	1 00	6 00
Dutchess . . . . .	12	1 00	6 00
Diamond . . . . .	10	85	4 50
Lindley . . . . .	10	85	4 50
McKinley . . . . .	30		
Moore's Early . . . . .	10	85	4 50
Martha . . . . .	12	90	5 00
Niagara . . . . .	10	85	4 50
Nectar . . . . .	15	1 40	10 00
Pocklington . . . . .	10	75	4 00
Salem . . . . .	12	90	5 00
Wilder . . . . .	12	1 00	
Worden . . . . .	12	90	5 00
Wyoming, red . . . . .	12	90	5 00

### STRAWBERRIES.

No stock until Spring.

If wanted by mail add 15 cents per dozen.

# = MISCELLANEOUS = PLANTS AND BULBS

LIMITED SPACE does not permit us to enumerate our entire list of Plants and Bulbs. Prices on other varieties will be furnished on request. It is our aim to offer the best stocks obtainable — strong, true to name, and free from disease and insects. We prefer to furnish the Best not the Cheapest. No charge for packing. Unless so requested, we never ship plants by freight. To insure safe packing, greenhouse plants are always removed from the pots.

## TENDER PLANTS.

	Per doz	Per 100
Abutilons, in variety . . . .	\$0 60	\$ 4 00
Acuba Japonica, 3-inch pots	75	6 00
Amaryllis Johnsoni, bulbs, 9-11 in.; each 25c . . . .	2 50	20 00
Amaryllis Vittata Hybrids, Giant flowering; each 50c	5 50	
Araucaria excelsa, 10 to 12 inches high, extra fine, each 60c.		
Achania Malvaviscus . . . .	75	5 00
Asparagus plumosus nanus 2½-inch pots . . . . .	50	4 00
Sprengeri, 2½-inch pots . .	50	4 00
Azaleas, ready in October, 12 to 14-inch heads . . . .	Each 65	Per doz 7 50
10 to 12-inch heads . . . .	50	5 50
8 to 10-inch heads . . . .	40	4 50
	Per doz	Per 100
Begonias, flowering varieties, Rex varieties, 3-inch pots .	75 85	5 00 6 00
Carnations, general collection, from open ground, Lady Bountiful, Red Jacket, Harlowardin, Boston Market, and The Queen Pink Enchantress, Rose Pink Enchantress, White Enchantress, Winsor and Mrs. Lawson . . . . .	75	5 00
Calla, Little Gem (green plants)	75	5 00
Cannas, general collection . .	50	3 00
Carex Japonica variegata . .	60	4 00
Chrysanthemums, 3-inch pots From open ground . . . . .	75 1 00	5 00 8 00
Cyperus alternifolius . . . .	60	4 00

Ficus elastica (Rubber Tree) 4-inch pots, 25 cts. each 5-inch pots, 35 cts. each	Per doz	Per 100
Fuchsia, general collection	\$0 60	\$4 00
Grevillea Robusta . . . . .	50	4 00
Ferns, assorted for fern dishes Nephrolepis Bostoniensis, (Boston Fern) 2½-inch pots . . . . .	60	4 00
Large plants from bench, each 25c. and 40c., ac- cording to size.		
Nephrolepis Scholzei Fringed Scottii, 2½-inch pots . . . . .	60	4 00
Large plants from bench, each 25c. and 40c.		
Nephrolepis Whitmani . . . 2½ inch pots . . . . .	60	4 00
Large plants from bench, each 25c. and 40c.		
Nephrolepis Scottii. The new dwarf Boston Fern. 2½-inch pots . . . . .	60	4 00
Large plants from bench, each 25c. and 40c.		
Hydrangea Otaksa, Jeanne d'Arc, Red Branched, 2½-inch pots . . . . .	75	5 00
Jasminum grandiflorum . . . .	75	5 00
Lemon Verbena . . . . .	60	4 00
Oleander, double pink, 3-in. pots . . . . .	85	6 00
Variegated, 3-inch pots . . .	1 00	7 00
Otaheite Orange, 2½ inch pots . . . . .	1 00	7 00
Extra strong plants 4-in. pots	1 75	12 00
Palms—KentiaBelmoreana . .		
From 4-in. pots, each 30c.	3 50	
Kentia Forsteriana . . . . .		
From 4-in. pots, " 30c.	3 50	

	Per Doz	Per 100
Primroses, single white or pink	\$0 75	\$5 00
Baby Primrose (P. Forbesii)	75	5 00
Obconica grandiflora, 2½-inch pots . . . . .	60	4 00
Roses, monthly, . . . . .	75	5 00
Smilax . . . . .	40	3 00
Swainsonia alba . . . . .	75	5 00
Vinca major var., field grown	75	6 00

### HARDY SHRUBS AND VINES

	Per Doz	Per 100
Akebia quinata, 1 year . . . . .	\$0 75	\$6 00
Ampelopsis quinquefolia . . . . .	85	6 00
Veitchii, pot grown . . . . .	1 00	7 00
Bignonia radicans, . . . . .	75	5 00
Chinese Matrimony Vine . . . . .	75	6 00
Clematis paniculata, 2 year, per 1000, \$60 . . . . .	85	7 00
Jackmanii, Madam Edouard Andre and Henryi . . . . .	2 00	15 00
Honeysuckle (Climbing), Hall's . . . . .	85	6 00
Hydrangea paniculata grand. 1st size . . . . .	1 25	8 00
2d size . . . . .	85	6 00
Hydrangea arborescens grandiflora alba, strong, 1 year, field grown . . . . .	1 25	10 00
Ivy, English, 1 year . . . . .	75	5 00
" " 2 " . . . . .	1 25	8 00
Kerria Japonica . . . . .	1 25	8 00
Lilac, purple . . . . .	1 00	7 00
Privet, California, . . . . .	Per 100	Per 1000
1½ to 2 feet, . . . . .	2 75	25 00
2 to 3 feet, . . . . .	3 50	30 00
Roses, Hybrid Perpetuals . . . . .	Per Doz	Per 100
2 year . . . . .	1 50	12 00
Moss, general list, 2 year . . . . .	1 50	10 00
Baby Rambler, 1-year field grown plants . . . . .	85	7 00
Ramblers, Crimson, Pink, White, Yellow, 1 year . . . . .	85	7 00
Ramblers, Crimson, Pink, White, Yellow, 2 yr. . . . .	1 50	12 00
Moss Roses, 2 year . . . . .	1 50	12 00
Climbing Roses, 2 year . . . . .	1 25	10 00
Spiræa Arguta, Billardi, Bi- lardi alba, Bumaalda, Douglassi, Anthony Waterer . . . . .	1 25	8 00
Wistaria Magnifica . . . . .	1 50	10 00

### HARDY BULBS AND ROOTS

	Per Doz	Per 100
Achillea The Pearl, Millefo- lium roseum, tomentosum	\$0 75	\$5 00
Alyssum Saxatile, compactum	85	6 00
Anthemis Tinctoria . . . . .	85	6 00
Anemone, Queen Charlotte, Whirlwind, Japonica Alba. . . . .	1 00	7 00
Aquilegia chrysantha and cœ- rulea, Skinneri . . . . .	85	6 00
Armeria (Thrift or Sea Pink)	75	5 00
Arabis alpina . . . . .	75	5 00
Asters, (Michaelmas Daisies) in variety . . . . .	85	6 00
Boltonia Asteroides . . . . .	85	6 00
Chives . . . . .	50	3 00
Clematis Davidiana . . . . .	85	6 00
Campanulas, in variety . . . . .	85	6 00
Coreopsis lanceolata grandifl.	85	6 00
Daisy, Shasta . . . . .	85	6 00
Delphinium, in variety . . . . .	85	6 00
Dicentra spectabilis . . . . .	1 00	7 00
Digitalis . . . . .	85	6 00
Erianthus Ravennae . . . . .	85	6 00
Eulalia Japonica variegata . . . . .	85	6 00
gracillima univitata . . . . .	85	6 00
zebrina . . . . .	1 00	7 00
Funkia Japonica, light blue . . . . .	75	5 00
undulata media picta, var'd	85	6 00
Alba, white . . . . .	1 20	10 00
Gaillardia grandiflora . . . . .	85	6 00
Gypsophila paniculata . . . . .	85	6 00
Hibiscus, Hardy Large-flow'g Crimson Eye, Militaris . . . . .	85	6 00
Hemerocallis flava, Yellow Day Lily . . . . .	85	6 00
Helianthus latæfrons, Maxi- miliana . . . . .	85	6 00
Hollyhocks, in colors, field grown roots, double . . . . .	85	6 00
New Mam. Fr'd Allegheny	85	6 00
Iris Kämpferi, named . . . . .	1 00	7 00
Germanica, mixed . . . . .	60	4 00
" named . . . . .	75	5 00
Iberis sempervirens . . . . .	0 85	6 00
Lobelia cardinalis . . . . .	85	6 00
Lychnis Chalcedonica . . . . .	85	6 00
Lysimachia clethroides . . . . .	85	6 00
Lythrum roseum superbum . . . . .	85	6 00
Monarda didyma . . . . .	85	6 00
Myosotis (Forget-me-not) . . . . .	60	4 00
Pardanthus Sinensis . . . . .	85	6 00

	Per Doz	Per 100		Per doz	Per 100
Pentstemon barbatus . . . . .	\$ 85	\$6 00	Potentilla . . . . .	\$ 85	\$6 00
cerulea . . . . .	85	6 00	Pyrethrum roseum . . . . .	75	6 00
Perennial Pea, pink . . . . .	85	6 00	Rudbeckia Golden Glow . . . . .	60	5 60
Peonies, fine collection . . . . .	1 25	9 00	Newmani, purpurea . . . . .	85	6 00
White . . . . .	1 50	12 00	Salvia pratensis azurea grandiflora . . . . .	85	6 00
Perennial Phlox, named varieties, field grown . . . . .	85	6 00	Sedum, in variety . . . . .	75	5 00
Mixed, field grown . . . . .	60	4 00	Spiræa, barbata, palmata, elegans, venusta . . . . .	85	6 00
Phlox Subulata, The Bride . . . . .	75	6 00	Stokesia cyanea . . . . .	75	5 00
Physostegia, Virginica, alba, cerulea . . . . .	85	6 00	Sweet William . . . . .	85	6 00
Pinks, fine collection (clumps) . . . . .	85	6 00	Thalietrum minus . . . . .	85	6 00
Platycodon grandiflorum . . . . .	85	6 00	Thermopsis Caroliniana . . . . .	1 00	7 00
Polemonium, white, blue . . . . .	85	6 00	Tritoma McOweni . . . . .	85	6 00
Poppy, Oriental . . . . .	85	6 00	Veronica spicata . . . . .	85	6 00
Poppy, Iceland, white, yellow and orange . . . . .	75	5 00	Yucca filamentosa, 1 year . . . . .	85	6 00
			"    2 year . . . . .	1 00	8 00

## Miscellaneous Flower Seeds

### FOR FLORISTS AND MARKET GARDENERS

NOTE—Where flower seeds are quoted at 10 cents per ounce, if smaller quantities are wanted we will send our regular packets at 50 per cent. discount from retail prices.

	Per lb.	Per oz.		Per lb	Per oz
<b>Antirrhinum</b> (Snapdragon)—			<b>Centaurea</b> gymnocarpa . . . . .	\$4 00	\$0 40
Extra fine tall, mixed . . . . .	\$0 25	25	candidissima . . . . .		75
Giant-flowered, mixed . . . . .		40	<b>Cineraria</b> hybrida grandiflora,		
<b>Aquilegia</b> —double, mixed . . . . .		20	choice mixed, first quality, packet 25 cts.; 1-64 oz.		
Single, mixed . . . . .		20	\$1 75.		
<b>Asparagus plumosus nanus</b> —			Extra choice, prize strain,		
100 seeds, 60c.			1-128 oz. \$1 50.		
1000 seeds, \$1.00.			<b>Cineraria</b> maritima (candidissima) (Dusty Miller) . . . . .	1 60	15
Sprengeri, 250 seeds, 25c ;			<b>Cobæa</b> scandens, blue . . . . .	3 50	35
1000 seeds, 75c.			scandens, white . . . . .		1 00
<b>Calceolaria</b> hybrida grandiflora, large flowered, splendid strain, 1-64 oz. \$1 00			<b>Coreopsis</b> coronata . . . . .		10
hybrida grandiflora tigrina, from the finest selections of tigered or spotted . . . . .			lanceolata (Golden Coreopsis) . . . . .		25
1-64 oz. \$1 00			<b>Cyclamen</b> Persicum (true) . . . . .		2 00
<b>Candytuft</b> —White Rocket . . . . .		15	Persicum giganteum, mixed		
Empress, large, white . . . . .	\$2 25	25	per 100 seeds, \$1.00 . . . . .		
Dunnett's Ex. Dark Crimson . . . . .		15	<b>Daisy</b> (Bellis perennis).		
Mixed colors . . . . .		15	Choicest double, mixed, from prize flowers . . . . .		2 00
<b>Canterbury Bell</b> (Campanula Medium), single varieties mixed . . . . .	2 00	25	Extra double, white, 1-16 oz. 15 cents . . . . .		2 00
Double varieties mixed . . . . .		1 00	"Longfellow," flowers very large, dark rose, 1-16 oz. 15 cents . . . . .		2 00
Calycanthemum (Cup and Saucer), mixed . . . . .		1 20	Snowball, 1/8 oz. 25 cents . . . . .		1 75
<b>Carnation</b> —Early flowering Vienna, extra fine mixed, excellent for cutting . . . . .		75	<b>Daisy, Shasta</b> (Chrysanthemum leucanthemum hyb.)		
Extra fine double, mixed, 1-16 oz. 15 cents . . . . .		1 75	1-16 oz. 15 cents . . . . .		2 00

	Per lb.	Per oz.		Per lb.	Per oz.
<b>Delphinium</b> —extra choice, large flowering, double hybrids; mixed, <i>Ameri-</i> <i>can grown</i> , an exception- ally fine strain . . . . .	\$2 00	\$0 20			
<b>Digitalis</b> (Foxglove) fine mixed . . . . .		20			
extra choice, mixed . . . . .		25			
<b>Fuchsia</b> —Choice mixed, single and double, per 500 seeds, \$1.25 . . . . .					
<b>Geranium zonale</b> , best mixed		50			
<b>Gloxinia hybrida</b> , from Benary's choice collection. 1-64 oz. 75 cts. . . . .					
<b>Grevillea robusta</b> . . . . .		50			
<b>Hollyhock</b> —Finest double mix		80			
<b>Impatiens Sultani</b> , charming bright rose-colored flowers 1-32 oz. 60 cts.					
<b>Lobelia</b> —Barnard's Perpetual	1 00				
<b>Mignonette</b> —Sweet (Reseda odorata) . . . . .	65	10			
Allen's Defiance . . . . .		50			
Bismarck—Imp'd Matchet		50			
Machet, red . . . . .		50			
Machet, New Golden . . . . .		50			
Miles' Hybrid Spiral . . . . .		20			
Golden Queen . . . . .		20			
Parsons' White . . . . .		20			
<b>Myosotis</b> (Forget-me-not)— Alpestris grandiflora, blue . . . . .		40			
Alpestris, mixed . . . . .		35			
palustris semperflorens . . . . .	1 50				
<b>Pansy</b> — Bugnot's Superb Blotched, mixed varieties, $\frac{1}{8}$ ounce, 40 cents . . . . .		2 00			
Cassier new large-flowering, blotched, mixed, $\frac{1}{4}$ ounce 60 cents . . . . .		2 00			
Masterpiece, new class of Giant Blotched varieties, fine rich colors, 1-8 oz. 60c.		3 50			
Odiar, or Large-Eyed, mixed varieties, $\frac{1}{4}$ ounce, 75c.		2 50			
<b>Vick's Superb Mixture</b> of the choicest strains, per $\frac{1}{8}$ ounce, 75 cents . . . . .		5 00			
Vick's Peerless Mixture . . . . .		3 00			
Trimardeau or Giant, . . . . .					
“ Adonis, light blue . . . . .		1 50			
“ Freya . . . . .		1 50			
“ King of the Blacks . . . . .		1 50			
“ Lord Beaconsfield . . . . .		1 50			
“ Pure Yellow . . . . .		1 50			
“ Snowflake . . . . .		1 85			
“ White, with dark eye . . . . .		1 25			
“ Yellow, with dark eye . . . . .		1 75			
<b>Pansy</b> Standard varieties mixed . . . . .	\$6 50	\$0 60			
Fine mixed . . . . .	4 00	40			
<b>Poppy, Iceland,</b> Orange, White, Yellow, and Mixed each . . . . .		40			
bracteatum, scarlet . . . . .		65			
involutatum maximum, scarlet . . . . .		65			
Oriental, darkest red . . . . .		60			
<b>Primula Sinensis</b> — Choicest fringed, mixed, . . . . .					
1-32 ounce, \$1.50 . . . . .					
Fern-leaved, mixed . . . . .					
1-32 ounce, \$1.50 . . . . .					
<b>Primula obconica</b> , white, fine for pots, per 1-16 oz. \$1.00					
Obconica grandiflora, hybrids mixed, 1-16 oz. 60 cts.					
vulgaris (English Primrose)		1 25			
<b>Salpiglossis</b> —Emperor, new large-flowered mixed. . . . .		75			
<b>Smilax</b> (Myrsiphyllum asparagoides) . . . . .		25			
<b>Stock</b> —Dwarf Forcing, Ten- Weeks “Snow-Flake” 1-16 oz. 75 . . . . .					
Dresden Perpetual White, fine for cutting, $\frac{1}{8}$ ounce 50 cents . . . . .		2 00			
Large-Flowering Dwarf, Ten-Weeks, mixed colors . . . . .		2 50			
Early Large flowering winter, 1-16 oz., 50 cents.					
Giant White Nice, $\frac{1}{8}$ oz. 25 cents. . . . .		1 50			
Giant Yellow Nice, $\frac{1}{8}$ oz. 25 cents . . . . .		1 50			
Beauty of Nice, delicate fleshy pink, $\frac{1}{8}$ oz. 50c.		2 50			
Queen Alexandra, rosy lilac, $\frac{1}{8}$ oz. 50 cents . . . . .		2 50			
Crimson King, fiery crim- son, 1-16 oz. 50 cents		5 00			
<b>Sweet Peas</b> —All the leading named varieties. See our General Wholesale List.					
Vick's Invincible mixture . . . . .		45			
Eckford's Gilt Edge mixture . . . . .		22			
Common mixture . . . . .		18			
<b>Sweet William</b> —Hoborn Glory (new), extra large flowers, finest shades . . . . .		40			
Hunt's Perfection (auricula- flowered) finest mixed, <i>American grown</i> . . . . .		10			
Dunnett's Dark Crimson . . . . .		25			
Double, finest mixed . . . . .		25			
Single, finest mixed . . . . .		10			
<b>Vinca</b> —mixed . . . . .		50			
<b>Wallflower</b> —Finest double, mixed, 1-16 oz. 30 cts. . . . .		3 00			
Single, finest mixed . . . . .		15			



# FERTILIZERS, INSECTICIDES AND FLORISTS' SUPPLIES

PRICES QUOTED HERE ARE NET CASH, AND SUBJECT TO MARKET CHANGES

**Clay's Fertilizer.** A well known English fertilizer for forcing greenhouse plants. 5 lbs., 50 cents; 10 lbs., 95 cents; 28 lbs., \$1.75; 112 lbs., \$6.00.

**Pulverized Sheep Manure.** Practically odorless. Highly recommended for lawn, garden and greenhouse use. 100 lb. bag, \$1.75; ton, \$25.00.

**Walker's Floral Fertilizer.** A chemically correct flower food for house plants. Has no odor, and can be used dry, or dissolved in water for sprinkling. Small size, per dozen, \$1.25. Large size (feeds 30 plants for six months) per dozen, \$2.00.

**Nitrate of Soda.** (Chili Saltpeter.) The best and cheapest form of Nitrogen for plants.

Highly concentrated and immediately available. Nothing like it to make plants grow. 10 lbs., 45 cents; 25 lbs., \$1.00; 50 lbs., \$1.90; per sack of 100 lbs., \$3.25.

**Genuine Peruvian Guano.** Especially adapted to needs of florists and market gardeners for forcing flowers or vegetables. Rich in fertilizing value. Nothing better for quick results. 50 lbs., \$1.25; 100 lbs., \$2.25; 200 lbs., \$4.00; 500 lbs. or more, \$35.00 per ton.

**Pure Raw Bone Meal.** 50 lbs., \$1.50; per sack of 100 lbs, \$2.50; ton, \$40.00.

**Aphis Punk.** Excellent for aphis, red spider, white, green and black fly and thrip. (For greenhouse only.) Per box of 12 rolls, 60 cents; per dozen boxes, \$6.50.

**Bordeaux Mixture.** Quart, 35 cents; gallon, \$1.00.

**Dalmatian (Persian) Insect Powder.** ¼ lb., 15 cents; ½ lb. 25 cents; 1 lb., 40 cents.

**Nicotide.** (Liquid.) For fumigating and spraying. Contains the active principles of tobacco. ¼ pt., 70c.; ½ pt., \$1.25; 1 pt., \$2.50; 1 qt., \$4.50; ½ gal., \$8.50; 1 gal., \$15.00.

**Nicofume.** Tobacco paper for fumigating, in cans. Quart cans (24 sheets) 75 cents; 1 gross cans (144 sheets,) \$3.50; 2 gross cans (288 sheets) \$6.50.

**Nicofume Liquid.** ¼ pt., 50c.; 1 pt., \$1.50; ½ gal., \$5.50; 1 gal., \$10.50.

**Nikoteen,** 1 pound can, \$1.40.

**Sulpho-Tobacco Soap.** Used as a wash for roses, trees, and house plants. Also for insects on animals. Small size, per dozen, 95 cents; large size, per dozen, \$1.50.

**Tobacco Dust.** Per lb., 7 cents; 5 lbs., 25c.; 10 lbs. or over, 4c. per lb.

**Whale Oil Soap.** Used as a wash for roses, trees, and plants affected with insects.

1 lb. box, 15 cents; per dozen, \$1.50. ½ lb. box, 10 cents, per dozen, \$1.00.

**Mastica.** For glazing work. It is a putty-like preparation made especially for the purpose. Sets quickly, can be used in cold weather, does not crack. Use in a putty bulb or machine..

Per quart, 40 cents; gallon pails, \$1.25. Machine for applying, \$1.25. Putty Bulbs, 85 cents.

Pot Labels.	4 inch	4 ½ "	5 "	6 "	10 "	12 "	Per 1000	
							Plain	Painted
							\$0 50	\$0 70
"							60	80
"							70	95
"							90	1 20
"							2 00	2 50
"							2 40	3 00

**Raffia.**—Natural, per pound, 15 cents; 5 lbs., 70 cents; 10 lbs., \$1.25.

Colored, per lb., 40 cents.

**Sprinklers.** "Tyrian." Rubber, made with a perforated detachable top; valuable for window gardening, bouquet sprinkling, dampening clothes, etc.

6-ounce size, straight neck . . . \$0 60.

8-ounce size, straight neck . . . \$0 80

6-ounce size, bent neck . . . 70.

8-ounce size, bent neck . . . 90

**Thermometer.** Self registering, each, \$2.00

# VICK QUALITY NARCISSUS



EMPEROR

PRINCESS

EMPRESS

DOUBLE  
VAN SION

JAMES VICK'S SONS  
ROCHESTER, N.Y.