

Historic, Archive Document

Do not assume content reflects current scientific knowledge, policies, or practices.

6287
Spring 1897

GEORGE H. MASS

Woodstock, Vt.

CATALOGUE OF

Greenhouse

— AND —

— Bedding Plants

.....
FLOWER

and

VEGETABLE

SEEDS

.....



ALL who are engaged in the cultivation of Plants, Fruits, Trees, Flowers, Bulbs, etc., either for profit or pleasure, will find it necessary and most profitable to have some expert guidance, in order to be successful. There is no Gardening Magazine, which meets this want better than AMERICAN GARDENING.

THE MONEY MAKER.

Worth \$100.00 a year and more to all who own Land, a Garden, Orchard or Greenhouse; covers in plain language, by practical men, the raising of Fruits, Vegetables, and Plants generally, for table and market purposes, and tells how to make Home Grounds attractive.



An Illustrated Journal of Gardening and Fruit Growing, and Record of Current Events in Horticulture. America's Brightest and most Reliable Family Gardening Paper. Established Fifty Years.

EVERY SATURDAY.

16 TO 24 PAGES.

\$1.00 A YEAR.

WITH HANDSOME PREMIUM.

Offices: RHINELANDER BUILDING, 2 to 8 DUANE STREET, NEW YORK.

THERE is no paper published which so systematically teaches how to make money in working the soil, explaining all methods that make it yield freely, and render its products of extra value on the markets. AMERICAN GARDENING fills all wants in this direction and includes all that is worth knowing. It shows the profits to be obtained from

Fruits, Vegetables, and Flowers By Intensive Cultivation Under Glass and In The Open.

The man who tills the soil for a living must now look to the close and careful cultivation of **Choice Fruits, Vegetables, or Flowers on small areas of ground**—*in*-tensive cultivation as against *ex*-tensive cultivation.

AMERICAN GARDENING is the only paper published which is exclusively devoted to Intensive Cultivation.

FREE

To introduce it to NEW readers we will give a subscription to AMERICAN GARDENING for three months (12 numbers) as a premium to every purchaser from us of Plants, Trees, Seeds or Bulbs advertised in this Catalogue to the amount of \$1.00 or over.

FREE

IF YOU WANT THIS PREMIUM MENTION IT WHEN YOU ORDER.

Subscriptions to be discontinued at the expiration of that time unless you notify the publishers to the contrary. This offer is open only to those who are not PRESENT SUBSCRIBERS to that journal.

Address your orders to

GEO. H. MASS, Florist and Seedman, WOODSTOCK, Vt.

IN PRESENTING this catalogue for 1897, we take the opportunity of thanking our numerous friends and customers for their generous patronage, and assure them that we shall do our utmost to merit a continuance of the same. From those who have not favored us with their orders we would respectfully solicit a trial. Orders, however small, will have prompt and careful attention.

ORDER EARLY. It is important to secure prompt delivery, that all orders be sent in as early as possible, as there is a liability of some delay in filling orders received during the height of the busy season. All seeds offered in this catalogue which are not grown by us have been secured from the most reliable growers, and have been carefully tested as to their germination.

FREE BY MAIL. Flower and vegetable seeds in packets and ounces will be forwarded free by mail at prices quoted in this catalogue. Add 8 cents per pound on seeds, and 15 cents per quart on peas and beans, and 10 cents per quart on corn, to cover postage, if to be sent by mail.

Discount on Seeds in Packets and Ounces.

For \$0.25	you may select seeds to the amount of	\$0.35
" .50	" " " " " "65
" 1.00	" " " " " "	1.25
" 2.00	" " " " " "	2.50
" 3.00	" " " " " "	3.75
" 4.00	" " " " " "	5.00
" 5.00	" " " " " "	6.25

This offer is for seeds in packets and ounces only, and will be sent postpaid; cash to accompany the order.

PLANTS. We are equally careful in our shipments of plants. All plants offered by us are carefully grown, strong and healthy, and are certain to prove satisfactory. We make no charge for packing, boxes, etc., and pack as lightly as possible, so as to reduce the cost of carriage. Have your plants sent by express, as larger plants can be sent, and we will add enough plants, gratis, of our own selection to cover the express charges.

PLANTS BY MAIL. Small plants purchased from this catalogue and ordered to be sent by mail will be sent postpaid.

REMITTANCES may be made at our risk by bank draft, post office money order, express money order, or registered letter. Orders from parties unknown to us will be sent C. O. D., unless accompanied by remittance or satisfactory reference.

ADDRESS, Etc. Persons ordering seeds or plants by mail are requested to be particular to write their own name, also the names of their town, post office and state, plainly, and not to omit either, as serious delays are occasioned by such omissions.

GEORGE H. MASS,
Woodstock, Vermont.

Bargain Collections of Flower Seeds.

For 15 cts., we will send, postpaid, one full sized package each of

Asters, choice mixed.	Poppies, choice mixed.	Pansy, fine mixed.
Mignonette, sweet-scented.	Morning Glory, mixed.	Sweet Peas, mixed.

For 25 cts., we will send, postpaid, one full sized package each of

Asters, choice mixed.	Candytuft, white,	Marigold, double mixed,
Sweet Alyssum.	Larkspur, fine mixed.	Phlox Drummondii.
Calendula, Meteor.	Pansy, fine German, large	Sweet Peas, large flowering,
Calliopsis, mixed.	flowering.	mixed.

For 50 cts., we will send, postpaid, one full sized package each of

Sweet Alyssum.	Calliopsis.	Phlox Drummondii, mixed.
Asters, choice mixed.	Evening Primrose.	Pansies, large flowering.
Balsam, double mixed.	Candytuft, mixed.	Mignonette, sweet scented.
Calendula, Meteor.	Musk.	Marigold, double mixed.
Chinese Pink.	Nicotiana affinis.	Morning Glory, mixed.
Bachelor's Button.	Petunias, mixed.	Sweet Pea, mixed, large
Ageratum, fine mixed.	Poppies, mixed.	flowering.

You can do us a favor by giving us names and addresses of any of your friends, whom you know to be interested in our line.

Collections of Vegetable Seeds:

To assist those who are not familiar with, or do not wish to trouble themselves in selecting seeds, we have made up the following three Collections of Vegetable Seeds which will meet the requirements of a small family as well as a larger one. The seeds put up in these collections are of the best standard sorts; if some varieties should not be desired, changes can be made, provided the price to be the same as quoted in catalogue.

COLLECTION No. 1.

Price, \$1.00, or free by mail for \$1.25, contains 22 varieties, viz:

Beans—Dwarf, Early Valentine	½ pt.	Onion—Yellow Globe Danvers	1 pkt.
“ “ Improved Golden Wax	½ “	“ White, or Silver Skin.....	1 “
Beet—Eclipse	1 pkt.	Parsley—Double Curled	1 “
Cabbage—Early	1 “	Parsnip—Long Smooth.	1 “
Carrot—Early	1 “	Peas—American Wonder	1 pt.
Corn—Sweet, early	½ pt.	“ Second Early Laxton's Alpha	1 “
“ “ late	½ “	Radish—Early Scarlet Turnip....	1 pkt.
Cucumber—Early, White Spine.....	1 pkt.	Squash—Summer Crookneck.....	1 “
Lettuce—Early.....	1 “	“ Winter Hubbard	1 “
Melon—Musk, Early Hackensack	1 “	Salsify—Mammoth.....	1 “
“ Water, Phinney's Early Oval.....	1 “	Turnip—White, for table.....	1 “

With this Collection, will give free as a premium, three months' subscription to AMERICAN GARDENING.

COLLECTION No. 2.

Price, \$2.25; contains 32 varieties, viz:

Beans—Dwarf, string, green pod..... 1 qt.	Onions—Yellow Globe Danvers..... 1 oz.
“ “ “ yellow pod..... 1 “	“ White or Silver Skin..... 1 pkt.
“ “ Lima.....½ pt.	Parsnip —Hollow Crown..... 1 “
“ Pole, Snap 1 “	Parsley —Double Curled..... 1 “
Beet —Blood Turnip 1 pkt.	Peas —Early, Medium and Late.....each, 1 qt.
Cabbage —Early and Late..... each, 1 “	Pumpkin —Small Sugar 1 pkt.
Carrot —Early Scarlet Horn..... 1 “	Radish —Early Scarlet..... 1 “
Celery —Self-blanching 1 “	“ Long Scarlet Short Top..... 1 “
Cucumber —Early White Spine..... 1 “	Salsify —White 1 “
“ Boston Pickling..... 1 “	Squash —Summer Crookneck.. 1 “
Corn —Sweet, Early and Late.....each, ½ pt.	“ Winter Hubbard 1 “
Lettuce —Head, Early and Summer.. “ 1 pkt.	Spinach 1 “
Melon —Musk, best Early..... 1 “	Turnip —White, for table..... 1 “
“ Water, best Early..... 1 “	

With this Collection (No. 2), we will give free as a premium, three months' subscription to AMERICAN GARDENING, and your selection of six packets of the following Flower Seeds:

Aster, mixed.	Marigold, double mixed.	Poppies, mixed.
Alyssum, Sweet.	Mignonette, sweet.	Sweet Peas, mixed.
Calendula, Meteor.	Pansy, mixed.	Verbenas, mixed.
Candytuft, white.	Phlox Drummondii, mixed.	Zinnias, all colors.

COLLECTION No. 3.

Price, \$5.00; contains 50 varieties, viz:

Beans—Dwarf, string, green pod..... 2 qts.	Okra..... 1 pkt.
“ “ “ yellow pod 1 qt.	Onion—White..... 1 “
“ “ Lima.....½ pt.	“ Yellow Globe Danvers 2 ozs.
“ —Pole, Snap 1 “	Parsnip —Hollow Crown 1 oz.
“ Lima 1 “	Parsley —Double Curled..... 1 pkt.
Beets —Two varietieseach, 1 oz.	Pepper 1 “
Cabbage —Early, Medium and Late..... “ 1 pkt.	Peas —Extra Early, Medium and Late..each, 2 qts.
Cauliflower —Snowball 1 pkt.	Pumpkin —Small Sugar 1 pkt.
Carrot —Early Scarlet Horn..... 1 oz.	Radish —Early Scarlet 1 “
Celery½ “	“ French Breakfast 1 “
Corn —Sweet, Early..... 1 pt.	“ Long Short-Top..... 1 “
“ “ Medium 1 qt.	Spinach 1 oz.
“ “ Late..... 1 “	Salsify —Mammoth 1 pkt.
Cucumber —Improved White Spine..... 1 oz.	Squash —Summer Crookneck..... 1 “
“ Boston Pickling..... 1 “	“ Fall 1 “
Egg Plant 1 pkt.	“ Winter..... 1 “
Endive 1 “	Sage 1 “
Lettuce —Head, Early and Summer...each, 1 “	Summer Savory 1 “
Melons —Musk, Early..... 1 “	Sweet Majoram 1 “
“ Late..... 1 “	Thyme 1 “
“ Water, Early 1 “	Tomato —Early 1 “
Nasturtium —For Pickles..... 1 “	Turnip —Early, for table..... 1 oz.

With this Collection (No. 3), we will give free as a premium, three months' subscription to AMERICAN GARDENING, and a packet each of the following Flower Seeds.

Aster, mixed.	Marigold, double mixed.	Poppies, mixed.
Alyssum, Sweet.	Mignonette, sweet.	Sweet Peas, mixed.
Calendulas, Meteor.	Pansy, mixed.	Verbenas, mixed.
Candytuft, white.	Phlox Drummondii, mixed.	Zinnias, all colors.

Novelties and Specialties in Flower Seeds.



SWEET PEAS.

ASTERS—Late Flowering.

Simple's Branching. Plants of branching habit; flowers of perfect form, 4 to 6 inches across, borne on long stems.

Pure white.....	per pkt.,	15	cts.
Shell pink.....	"	15	"
Lavender blue.....	"	15	"
Mixed colors.....	"	10	"

Vick's White Branching. Flowers large, 4 inches across, pure white, borne on long stems. Its flowering period is later than all other Asters, coming in at a time when all others are scarce. Pkt. 10 cts.

COSMOS, Mammoth Perfection.

Flowers double the size of the old large flowering Cosmos; petals are broader, forming a perfect round flower. One of the best flowers grown for cutting; lasting a long time in water. Mixed colors. Pkt., 10 cts.

COSMOS, New California Mammoth.

New types, new shades in great variety. Flowers all shades of pink, snowy white, pretty mauve, exquisite shades of crimson and many other beautiful colors. Pkt., 10 cts.

MORNING GLORY—Double Flowering.

About 80 per cent. of the seedlings will produce double flowers, and the remaining semi-double or single. Pkt., 10c.

Imperial Japanese, or Emperor Morning Glories.

Of strong, rapid growth, can be grown in open ground when the weather has become warm and settled; foliage of varied forms and handsome markings. Flowers of large size, of good substance, and remain open the greater part of the day; in colors of white, different shades of pink, red, blue, purple, bronze, brown, ash gray, etc. Mixed varieties. Pkt., 10 cts.

PRIMULA FORBESI.

The seed of this Primula comes up very readily, and the plants begin to flower when quite small; flowers of a rosy lilac color, and are produced in great profusion throughout the winter. Pkt., 25 cts.

NEW PETUNIAS.

Large flowering. A California strain; flowers of enormous dimensions; fringed and of many beautiful colors. Pkt., 25 cts.

NEW DOUBLE PETUNIAS.

Large flowering, very double; edges finely fringed; in a great variety of colors. Pkt., 50c.

SWEET PEA—Red Riding Hood.

This is entirely new in form. The standard and wings are rosy pink shading to bluish white; the keel being nearly pure white; the fragrance is said to surpass in a marked degree that of other sweet peas; it is also unusually robust in habit; it is early flowering, and in plentitude and continuity of bloom it excels all other existing sorts. Pkt. 15 cts.

SWEET PEA—Blanche Ferry EXTRA EARLY.

The earliest Sweet Pea; in full bloom two weeks before any other sort. Of dwarf habit, and flowers profusely the whole season. The flowers all have the bright contrast of color which has made the Blanche Ferry so popular, the wings being nearly white, while the standard is deep rose pink, becoming more intense near the base. They are well poised on good stems and make an effective bouquet. Pkt. 5 cts.; oz., 10 cts.



COSMOS.

SWEET PEA—Katharine Tracy.

The largest and finest pink Sweet Pea; color of a soft pink; vines strong growing and vigorous, producing a profusion of flowers, which continue large and fine to the end of the season. Pkt., 5 cts.; oz. 10 cts.

Novelties and Specialties in Vegetable Seeds.



Davis' Kidney Wax Bean.

A dwarf, white seeded wax podded bean; of vigorous growth and great productiveness; pods tender and delicious when cooked, and when beans are too much matured, can be used shelled. $\frac{1}{2}$ pt., 10 cts.; pt., 15 cts.; qt., 25 cts.

Henderson's Bush Lima Beans.

Enormously productive; bearing continuously throughout the Summer; a true bush variety. Pkt., 10c.; pt., 20 cts.; qt., 35 cts.

Improved Golden Wax Bean.

A bush variety of robust growth, free from rust; large pods and very prolific. Pods golden yellow, tender and fleshy. Pt., 15 cts.; qt., 25 cts.

New Pink Plume Celery.

Possessing the beauty of the White Plume and the quality of the New Rose. The stalks being suffused with pink, and of rich nutty flavor, and long keeping quality. Pkt., 10 cts.

Golden Self-Blanching Celery.

One of the earliest varieties grown, very crisp, tender and of fine flavor; keeps well throughout the season. The best for early market use. Pkt., 10 cts.; oz., 35c.

Giant Pascal Celery.

Of fine nutty flavor; stalks broad, thick and crisp. It bleaches very quickly after earthing up. A valuable variety for second early use. Pkt., 10 cts.



PEA, PRIDE OF THE MARKET.

Sweet Corn, Childs' Honey Dew.

Very early; white cob, large pearly kernels; tender and sweet. Pkt., 5 cts.; pt., 10 cts.; qt., 20 cts.; pk., \$1.



CELERY, WHITE PLUME.

Extra Early Sugar Corn.

White Cob Cory. An improved variety of the Cory corn, with uniformly white cobs; ears large and of good flavor; it is as early as the ordinary Cory. Pkt., 5 cts.; pt., 10 cts.; qt., 20 cts.; pk., \$1.

Country Gentleman Sweet Corn.

The sweetest and most tender of all Sweet Corn. The ears are short; cobs small; kernels deeply set, pearly white and irregularly crowded together on the cob. Pkt., 5 cts.; pt., 10 cts.; qt., 20 cts.; pk., \$1.

Improved Stratagem Pea.

The best of the large podded sorts. The pods are of immense size and uniformly filled with very large dark green peas of the finest quality. All the good qualities of the old Stratagem are highly developed, and it is vastly superior to the stock now generally sold as Stratagem. Vine medium height, but very stocky, with very broad light green leaves and bearing an abundance of large handsome pods. Pt., 15 cts.; qt., 30 cts.; pk., \$1.75.

NOVELTIES AND SPECIALTIES IN VEGETABLE SEEDS—Continued.

Nott's Excelsior Pea.

A dwarf, extra early, wrinkled variety; one of the best recent introductions. Vines are larger and more vigorous than the American Wonder, and very prolific; pods well filled with peas, and quality superior to the extra early varieties; height, one foot. Pt., 15 cts.; qt., 30 cts.

Heroine Pea.

A medium early, green wrinkled pea, growing from two to two and a half feet high, and bears a profusion of large, long pods, peas of the finest quality. $\frac{1}{2}$ pt., 10 cts.; pt., 15 cts.; qt., 30 cts.; pk., \$1.75.



TOMATO.

Pea, Juno.

A new variety of robust growth, large straight pods; usually borne in pairs; peas dark green; delicious quality; medium early; height two feet. The past season has proved this pea to be one of great productiveness. Pt., 15 cts.; qt., 25 cts.; pk., \$1.50.

Sweet Heart Water Melon.

Early, uniformly large and handsome; a good shipper and a long keeper. The skin and flesh are of splendid color, and it has no equal as a shipping melon. Vine vigorous and productive, ripening its fruit early. Fruit large, oval, very heavy, uniformly mottled light and very light green. Rind thin but firm. Flesh bright red, firm, solid, but very tender, melting and sweet. Fruit remains in condition for use longer than any other sort. Seeds gray. Pkt., 5 cts.; oz., 10 cts.

Cosmopolitan Musk Melon.

One of the most distinct and uniformly handsome Melons ever introduced. The hardy Vine is wonderfully productive of globular fruits, which are densely covered with gray netting. Very sweet, melting and highly flavored. Unsurpassed in quality and perfection of form. Pkt. 5 cts.; oz., 10 cts.



MUSK MELON.

Tomato, New Stone.

A large, very smooth, bright scarlet tomato; ripening evenly to the stem without cracking. Flesh firm, solid and of excellent quality. Good for shipping. Pkt., 5 cts.

New Imperial Tomato.

This is an early, large, perfect shaped tomato; it ripens well up to the stem, and is very thick meated, and claimed to be earlier than any other variety. Pkt., 10 cts.



TURNIP, RED TOP STRAP-LEAF.

Early White Milan Turnip.

Color a pure white, of excellent quality and said to be quite as early as the Purple top Milan. Pkt., 10 cts.; oz., 15 cts.

Novelties and Specialties in Plants.

ABUTILON, SOUVENIR DE BONN.

A very striking variety; the leaves resembling those of Japanese Maple, with beautifully variegated leaves of good size, regularly and evenly marked with white and green; flowers orange colored, and produced in great abundance. Each, 10 cts.

ANEMONE, WHIRLWIND.

A new semi-double form of Anemone Japonica Alba. The flowers which are $2\frac{1}{2}$ to 3 inches across, have several rows of pure white petals, lasting much longer than the single varieties. A good acquisition. Each, 15 cts.; 6 for 75 cts.

ASPARAGUS SPRENGERI.

A very desirable new species, especially useful to grow as a pot plant, for decorative purposes or for planting in hanging baskets. It will make an excellent house plant, and it withstands a dry atmosphere. Each, 25 cts.

BEGONIAS.

Haageana. Of strong erect growth, the foliage is of large size, of a metallic green above and red below; flowers of large size, creamy white, shaded pink; it makes a good pot plant. Each 25 cts.

Maxii. This new Begonia was raised in this establishment, and awarded a medal at the World's Fair. It is of free growth; foliage of a rich metallic green above and red underneath. The flowers are of a bright pink color, and are borne in immensely large pendent panicles. Each, 15 cts.

Thurstonii. A distinct and pretty variety, with foliage of a bright metallic green above and bright red below; the flowers are rich pink, well above the foliage. Each, 10 cts.



ABUTILON.

BOUGAINVILLEA GLABRA SANDERIANA.

A new variety of Bougainvillea, flowering freely when quite small; continuing in bloom from seven to eight months. Flowers of a dazzling, rosy crimson color, and will undoubtedly become very popular as a pot plant. Each, 25 cts.



CANNA.

Two Grand Orchid Flowered CANNAS, Austria and Italia.

These are an entirely new race of cannas and altogether distinct from anything introduced heretofore; they have been very appropriately called "Orchid Flowered Cannas."

Italia is of a bright orange scarlet with a very broad golden yellow border; the flowers which are produced on massive stems, about 16 inches long, are set well above the foliage; foliage large and heavy. Each, 75 cts.

Austria is a counterpart of Italia in every way, except in the color of its flowers, which are of a pure canary yellow, with but few traces of small reddish brown spots in the centre of the two inside petals. Each, 50 cts.

CARNATIONS.

Annie H. Lonsdale. Of strong robust growth, flowers pure white, very fine.

Della Fox. Of the style of Daybreak, salmon pink, strong growing and free flowering.

Jubilee. Color intense scarlet, flowers large, quite full and well built.

Triumph. Color pure pink, flowers of the largest size; a strong heavy grower.

15 cts. each; set of four, varieties 50 cts.

NOVELTIES AND SPECIALTIES IN PLANTS—Continued.

COLEUS.

- Beckwith's Gem.** A beautiful variety with large leaves and finely scalloped edges; centre of leaves dark velvet maroon, bordered with fiery red; the edges of leaf creamy yellow. Each, 15 cts.
- Climax.** Red, brown and green. Each, 15 cts.
- M. Daudet.** Golden yellow, spotted and splashed with bright crimson. Each, 15 cts.
- Alhambra.** Rosy carmine edged with bronzy black. Each, 15 cts.
- Louis Paillet.** Centre magenta, shading into crimson, edged with green. Each, 15 cts.
- Salvator.** Centre bright carmine banded with crimson, edged green. Each, 15 cts.



GERANIUM.

FUCHSIAS.

- Mme. Bruant.** This is a novel and distinct new Fuchsia; flower is very large and double; the corolla of a delicate heliotrope color, slightly veined with carmine; sepals deep coral red; plant a vigorous grower and of graceful habit. Each, 20 cts.
- Little Beauty.** Flowers of good size, single; tube and sepals bright red, corolla deep purple; a charming variety and the most free flowering of all Fuchsias. Each, 15 cts.

GERANIUMS.

- E. Lequere.** Semi-double, deep salmon, with distinct white eye, semi-dwarf; compact, vigorous grower; broad foliage with heavy chocolate zone; large truss, borne on strong stalks, well above the foliage; a free bloomer. Each, 15 cts.
- Gloire de France.** Bright peach pink, shading to white; vigorous grower, with distinctly zoned foliage, which is broad; large truss, borne well above the foliage. Each, 15 cts.
- La Fontaine.** Snow white, double, semi-dwarf; good grower, light green foliage; good trusses which are freely produced. Each, 15 cts.
- Mrs. E. G. Hill.** A most pleasing shade of salmon with a light shading in the centre; trusses very large and borne well above the foliage; single variety; one of the finest salmon flowered Geraniums. Each, 15 cts.
- Madonna.** Color, soft shade of pale pink, with distinct white eye; large, handsome showy trusses, borne well above the foliage; single flowering; a vigorous healthy grower. Each, 15 cts.
- Mme. Ch. Molin.** Delicate salmon pink, shading to white on the edges of the petals; semi-dwarf, compact grower, with broad deep green foliage, heavily zoned; single flowering; truss very large, borne well above the foliage; very free flowering. Each, 15 cts.

NEPHROLEPIS EXALTATA BOSTONIENSIS, Or Boston Sword Fern.

This fern is a variation from the ordinary Sword Fern. It originated in the vicinity of Boston, and has for several years been in popular favor; a graceful drooping fern, the fronds of which frequently obtain a length of 4 feet. It makes an excellent plant to grow as a single specimen for table or vase. Good plants, 25 cts. each; strong plants, 50 cts. each.

ROSES—New Everblooming.

- Belle Siebrecht.** A superb new Hybrid Tea, with large buds of beautiful form of a rich solid pink. Plant is of free growth and very free flowering. Each, 15 cts.
- Souvenir du President Carnot.** This new Hybrid Tea Rose is without doubt the finest introduction in this type of rose in the past five years. A strong, clean, healthy grower, with handsome bronzy green foliage; and large beautifully shaped buds; color a delicate rosy flesh, shaded a trifle deeper at the centre; a very profuse bloomer. Each, 35 cts.
- Polyanthe Mosselle, or Yellow Clothilde Soupert.** The habit of this rose is the same as the well known Clothilde Soupert, while the flowers are white at the edges, and chrome yellow in the centre; it is much superior in the shape of the buds and profusion of bloom. Each, 20 cts.
- Pink Soupert.** This is a remarkably free blooming variety, surpassing even Clothilde Soupert in this respect. Flowers of a deep pink color. Each, 25 cts.



STROBILANTHES DYERIANUS.

STROBILANTHES DYERIANUS.

A desirable new foliage plant of brilliant and exquisite coloring, with leaves four to five inches long and two inches wide, of a metallic color, shading into light rose, with a light green margin. It is an excellent plant either for bedding out or pot culture, easily grown; flowers of a violet blue. Each, 15 cts.

General List of Vegetable Seeds.

ASPARAGUS.

CULTURE.—To have success with Asparagus, a rich soil is required, the ground should be well trenched and thoroughly enriched with rotted manure, bone and ashes. The roots should be set early in the Spring in rows about 18 inches apart, and about 1 foot apart in the rows, cover about 4 inches with earth. Cutting may be done the following Spring, but sparingly. Cut down the tops in Autumn, when ripened, and give a good dressing of manure and coarse salt and fork it into the ground early in the Spring.

Conover's Colossal. A standard variety; very productive and of the best quality. Per pkt., 5c.; oz., 10c.; $\frac{1}{4}$ lb., 20c.; 1 lb., 50c.

Palmetto. Earlier and a better yielder than Conover's Colossal. Per pkt., 10c.; oz., 25c.; 1 lb., \$2.

Asparagus Roots.

Conover's Colossal. 2 year old roots, \$1 per 100. 50 roots at 100 rate.

Palmetto. 2 year old roots, \$1.50 per 100. 50 roots at 100 rate.

BEANS, Dwarf or Bush.

CULTURE.—Sow in succession from April to the first part of August, in drills about 18 inches apart, cover about 2 inches deep. Thin plants to a distance of about 3 or 4 inches.

Add 15 cts. per quart if sent by mail, 8 cts. per pint.

Green-Podded Varieties.

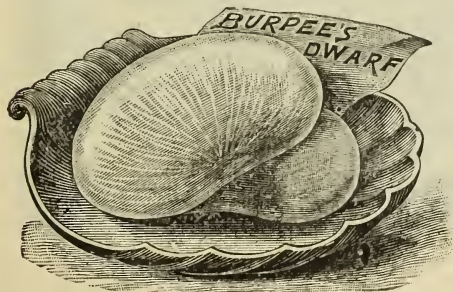
Extra Early Red Valentine. The earliest variety; very productive, pods fleshy and tender. Per pt., 10c.; qt., 20c.; pk., \$1.25.

Extra Early Refugee. Very productive, and nearly two weeks earlier than the ordinary Refugee. Per pt., 15c.; qt., 25c.; pk., \$1.35.

Dwarf Horticultural. Late and prolific. Per pt., 10c.; qt., 20c.; pk., \$1.25.

Refugee, or 1000 to 1. Very productive; medium bush sort and largely grown for pickling. Per pt., 10c.; qt., 20c.; pk., \$1.15.

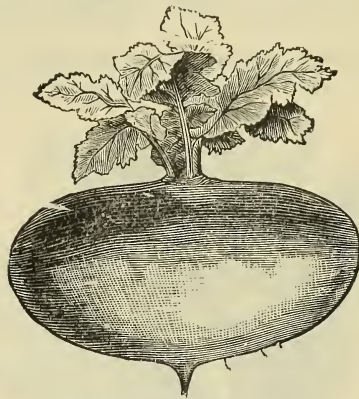
Dreer's Bush Lima. A true Bush Lima; beans larger than Henderson's Bush Lima, growing from $1\frac{1}{2}$ to 2 feet high, ripening 10 days earlier than the Pole Lima. Per pkt., 10c.; qt., 40c.



BURPEE'S BUSH LIMA.

Burpee's Bush Lima. Beans as large as Pole Lima. Per pkt., 10c.; pt., 20c.; qt., 35c.

Henderson's Bush Lima. This variety is two to three weeks earlier than any of the Pole Limas, and has come to stay, producing heavy crops. Beans are the size of a small Lima, of fine flavor. Per pkt., 10c.; pt., 20c.; qt., 35c.



BEET, EARLY BLOOD.

Wax-Podded Varieties.

Improved Golden Wax, Early. Pods are golden yellow, tender and fleshy. Per pt., 15c.; qt., 25c.

Yosemite Mammoth Wax. The pods are 8 to 10 inches long, thick and fleshy; plants large and vigorous, and should be planted at a greater distance than the other varieties. Per $\frac{1}{2}$ pt., 15c.; pt., 25c.; qt., 40c.

Flageolet Wax. A most valuable sort, pods large and tender. Per pt., 15c.; qt., 30c.

Black Wax. Very tender and of best quality. Per pt., 10c.; per qt., 20c.

Pole or Running Beans.

CULTURE.—Plant last week of May in hills about 4 feet apart each way, setting a strong pole in the center of each hill.

Dutch Case Knife. Pods long and flat; used as a snap or shelled bean. Per $\frac{1}{2}$ pt., 10c.; pt., 15c.; qt., 30c.

Horticultural, or Speckled Cranberry. An old and well known snap and shell bean. Per $\frac{1}{2}$ pt., 10c.; pt., 15c.; qt., 30c.

Black German Wax. Yellow pods; one of the best for snap. Per $\frac{1}{2}$ pt., 10c.; pt., 15c.; qt., 30c.

Improved Large White Lima. Generally grown of all Limas. Per $\frac{1}{2}$ pt., 10c.; pt., 20c.; qt., 40c.

Scarlet Runner. Flowers, bright scarlet; very ornamental; also used as String Beans and Shelled. Per $\frac{1}{2}$ pt., 15c.; pt., 25c.

White Dutch Runner. Similar to the Scarlet Runner, flowers and beans being white. Per $\frac{1}{2}$ pt., 15c.; pt., 25c.

BEET.

CULTURE.—Sow seed in early Spring and for succession, at intervals, until the first of July. Sow in drills a foot and a half apart and thin the plants to about 6 inches apart in the rows.

Extra Early Dark Egyptian. Tops small; turnip shaped, dark blood red. Per pkt., 5c.; oz., 10c.; $\frac{1}{4}$ lb., 15c.; 1 lb., 50c.

New Eclipse. Larger than Egyptian; flesh dark red, one of the best for private use; globular shape. Per pkt., 5c.; oz., 10c.; $\frac{1}{4}$ lb., 15c.; 1 lb., 50c.

Emand's Blood Turnip. Deep red and very regular in shape; of good market size. Per pkt., 5c.; oz., 10c.; $\frac{1}{4}$ lb., 15c.; 1 lb., 60c.

Dewing's Blood Turnip. Roots of fine flavor, blood red; a good market sort. Per pkt., 5c.; oz., 10c.; $\frac{1}{4}$ lb., 15c.; 1 lb., 50c.

Bastian's Blood Turnip. A second early, light colored, turnip shaped beet. Per pkt. 5c.; oz., 10c.; $\frac{1}{4}$ lb., 15c.; 1 lb., 50c.

Swiss Chard. Per pkt., 5c.; oz., 10c.; $\frac{1}{4}$ lb., 15c.; 1 lb., 50c.



SWISS CHARD.

Mangel Wurzel and Sugar Beets, for Feeding Stock.

Golden Tankard Mangel Wurzel. Per $\frac{1}{4}$ lb., 10c.; 1 lb., 30c.

Carter's Mammoth Long Red Mangel. Producing roots of large size and of excellent quality. Per $\frac{1}{4}$ lb., 10c.; 1 lb., 25c.

Golden Yellow Mammoth Mangel. Per $\frac{1}{4}$ lb., 10c.; 1 lb., 30c.

Vilmorin's Improved White Sugar. Per $\frac{1}{4}$ lb., 10c.; 1 lb., 30c.

Red Globe Mangel. Per $\frac{1}{4}$ lb., 10c.; 1 lb., 30c.

New Mammoth Golden Giant. Per $\frac{1}{4}$ lb., 10c.; 1 lb., 30c.

BRUSSELS SPROUTS.

A variety of Cabbage, having the stem covered with small, closely crowded heads. Excellent for the table.

Dwarf Improved. Of fine quality, sprouts compact. Per pkt., 10c.; oz., 25c.

CABBAGE.

CULTURE.—Sow the seed for early varieties in March, in hotbed or any other suitable place. For late varieties sow seed in open ground, the first week in May. Cabbage requires a rich, well drained soil. Early varieties may be set in rows about two feet apart, and 18 inches apart in the row. The late and large varieties three feet each way.



CABBAGE, EARLY SUMMER.

Early Jersey Wakefield. The best early cabbage; heads good size; solid; pyramidal in shape. Per pkt., 5c.; oz., 20c.; $\frac{1}{4}$ lb., 75c.

Early Summer. About ten days later than the Jersey Wakefield, but heads about twice the size of that variety. Best early medium cabbage in the market. Per pkt., 5c.; oz., 20c.; $\frac{1}{4}$ lb., 75c.

Early Winnigstadt. One of the best for general use; very solid; coming in about two weeks later than the early varieties. Per pkt., 5c.; oz., 15c.; $\frac{1}{4}$ lb., 55c.

All-Seasons. One of the finest for second early or late; of large size and sure to head. Per pkt., 5c.; oz., 15c.; $\frac{1}{4}$ lb., 50c.



CABBAGE, EARLY WINNIGSTADT.

Premium Flat Dutch. (Selected.) Best of all the late cabbage; large solid head, of good flavor and keeping qualities. Per pkt. 5c.; oz., 15c.; $\frac{1}{4}$ lb., 50c.

Perfection Drumhead—Savoy. The best Savoy variety, producing large heads of superior flavor. Per pkt., 5c; oz., 15c.; $\frac{1}{4}$ lb., 60c.

Red Dutch. Used mostly for pickling. Per pkt., 5c.; oz., 15c.; $\frac{1}{4}$ lb., 60c.

Mammoth Rock Red. A large growing and selected strain of the late red cabbage, heads will average twelve pounds each. Per pkt., 10c.; oz., 20c.

CARROT.

CULTURE.—Sow for succession from early Spring to first of July, in rows about 15 inches apart, and thinning the plants to about 4 or 5 inches apart in the rows.

Early French Forcing. The earliest variety, and one largely grown for forcing purposes; roots small and of an orange red color. Per pkt., 5c; oz., 15c.; $\frac{1}{4}$ lb., 40c.

Early Scarlet Horn. For early crop, but not large. Per pkt., 5c.; oz., 10c.; $\frac{1}{4}$ lb., 25c.; 1 lb., 75c.

Danvers. Roots even; bright orange; of good texture and fine flavor. Per pkt., 5c.; oz., 10c.; $\frac{1}{4}$ lb., 25c.; 1 lb. 80c.

Improved Long Orange. One of the most desirable for either garden or field culture. It grows to large size, fair specimens averaging 12 inches in length and 3 inches in diameter at the top. Per pkt., 5c.; oz., 10c.; $\frac{1}{4}$ lb., 25c.; 1 lb., 80c.

CAULIFLOWER.

CULTURE.—About the same as for Cabbage, but the soil should be more heavily manured.

Extra Early Dwarf Erfurt. Plants dwarf and compact, and seldom fail to form good sized heads; good for forcing, and equally valuable in the open ground. Per pkt., 15c; oz., \$2.50.

Early Snowball. Best of all Cauliflowers; earlier than any other variety; more dwarf in habit; head is as large and more sure than any other variety of forming a head in bad season. Per pkt., 25c.; oz., \$3.50.

Extra Early Paris. Not desirable for forcing, but valuable for outdoor culture. Per pkt., 5c.; oz., 80c.

CELERY.

CULTURE.—Sow the seed in hotbeds or boxes in March, and when large enough to handle transplant to cold frame. In July transplant to open ground in rows or shallow trenches about three feet apart, and about six inches apart in rows. Cultivate well and earth up carefully to blanch the stems. Labor can be saved in bleaching by placing boards 10 or 12 inches wide on each side of the plants.

Improved White Plume. Best early Celery, self bleaching; stalks and leaves are naturally white, and do not require earthing up like other varieties; tie the stalks together and draw a little earth about the plant which will be sufficient. Per pkt., 5c.; oz., 25c.; $\frac{1}{4}$ lb., 60c.

Golden Self Blanching. In appearance resembling the White Plume except in color, which is a bright yellow. Per pkt., 5c.; oz., 35c.; $\frac{1}{4}$ lb., \$1.

New Rose. Fine flavor; solid and crisp; a good keeper. Per pkt., 5c.; oz., 30c.; $\frac{1}{4}$ lb., \$1.

Boston Market. Dwarf branching; fine flavor, crisp and tender. Per pkt., 5c.; oz., 20c.; $\frac{1}{4}$ lb., 60c.

Celeriac or Turnip Rooted Celery.

Giant Prague. The best variety. Per pkt., 5c.; oz., 30c.

CORN.

Sweet or Sugar.

CULTURE.—Sweet Corn does best in warm, dry highly enriched soil; plant seed in hills about three feet apart each way, and in succession in intervals of two weeks, from about the middle of May to the first of July.

Add ten cents per quart if sent by mail.

Extra Early White Cory. The earliest of Sweet Corn; ears large and of good flavor. Per pkt., 5c.; pt., 10c.; qt., 20c.; pk., 90c.

Honey Dew. Child's. See novelties. Per pkt., 5c.; pt., 10c.; qt., 20c.; pk., 90c.

Crosby's Early. A very good variety; ears are rather small, but very productive and excellent quality. Per pkt., 5c.; pt., 10c.; qt., 20c.; pk., 90c.



CUCUMBER, EARLY WHITE SPINE.—See page 12.

No Plus Ultra. (Country Gentleman.) One of the sweetest; of medium earliness—the ears short, but the cob is very small; the kernels are of extraordinary depth, and are set irregularly, not in rows. Per pkt., 5c.; pt., 10c.; qt., 20c.; pk., \$1.

Moore's Early Concord. Ears large and well filled; early, and unsurpassed for richness and delicacy of flavor. Per pkt., 5c.; pt., 10c.; qt., 20c.; pk., 80c.

Black Mexican. Very sweet and of superior flavor, kernels black. Per pkt., 5c.; pt., 10c.; qt., 20c.; pk., \$1.

Stowell's Evergreen. Late variety, of excellent quality; remaining longer in the green state than any other. Per pkt., 5c; pt., 10c.; qt., 20c.; pk., 70c.

Early Minnesota. A second early variety. Per pkt., 5c.; pt., 10c.; qt., 20c.; pk., 85c.

Squantum. One of the sweetest varieties, and is largely used for market and canning. It is a general favorite and wonderfully productive. Per pkt., 5c.; pt., 10c.; qt., 20c.; pk., 90c.

White Rice Pop Corn. One of the best varieties of pop corn. Per lb. 10c.

CRESS OR PEPPER-GRASS.

A well known pungent salad. Must be sown in succession as it quickly runs to seed.

Extra Curled. Per oz., 5c.; $\frac{1}{4}$ lb., 15c.

Water Cress. May be grown in any stream. Per pkt., 10c.; oz., 40c.

CUCUMBERS.

CULTURE.—For very early crop, plant seeds in small pots in the house. For general crop, sow about the middle of May, and in succession till the first of July, in hills about four feet apart each way; when well advanced pull out, leaving four plants. A sandy loam suits best, and a shovel full of well rotted manure should be thoroughly mixed in each hill before planting.

Improved Early White Spine. A favorite market variety; of medium size; deep green and of fine flavor. Per pkt., 5c.; oz., 10c.; $\frac{1}{4}$ lb., 25c.; 1 lb., 70c. (See illustration on page 11.)

Peerless White Spine. For early market use; fine, perfect form and very productive. Per pkt., 5c.; oz., 10c.; $\frac{1}{4}$ lb., 25c.; 1 lb., 70c.



ENDIVE.

Early Cluster. A much esteemed early sort, growing in clusters; very productive. Per pkt., 5c.; oz., 10c.; $\frac{1}{4}$ lb., 25c.; 1 lb., 70c.

Boston Pickling. Grown about Boston by market gardeners for pickles more than any other variety. Per pkt., 5c.; oz., 10c.; $\frac{1}{4}$ lb., 25c.; 1 lb., 70c.

Long Green. Long fruit, of excellent quality; dark green; firm and crisp. Per pkt., 5c.; oz., 10c.; $\frac{1}{4}$ lb., 20c.; 1 lb., 70c.

DANDELION.

CULTURE.—Seed should be sown in drills 18 inches apart, and half an inch deep. The leaves are best for salad when blanched, which can be done by partially shading the rows with boards

Improved Broad Leaved. The best sort. Per pkt., 10c.; oz., 40c.

EGG PLANT.

CULTURE.—Seed should be sown in hotbed in early Spring. Care must be taken to protect the plants from cold. Set plants out in open ground in June, in rows three feet apart and two feet apart in the rows.

Improved New York. Purple. A leading market variety; fruit large and of good quality. Per pkt., 5c.; oz., 30c.

Black Pekin. Fruit jet black; round in form. Per pkt., 10c.; oz., 40c.

ENDIVE.

CULTURE.—Sow seed in June or July in drills; thin the plants to about 8 inches; and when the leaves are 8 inches long tie together at the top to blanch the inner leaves.

Green Curled. Leaves dark green, tender and crisp. Per pkt., 5c.; oz., 15c.

French Moss Curled. A handsome variety. Per pkt., 5c.; oz., 15c.

KALE, OR BORECOLE.

CULTURE.—Sow seed in May and transplant and treat the same as cabbage.

Dwarf Green Curled Scotch. A dwarf variety; rarely exceeding 18 inches in height, but spreading out under a good cultivation to three feet in diameter. Per pkt., 5c.; oz., 15c.

KOHL-RABI.

CULTURE.—Same as turnip; the thickened stem above ground is cooked and used like the turnip.

Early White Vienna. Flesh white and tender; must be used when young, as it becomes stringy with age. Per pkt. 5c.; oz. 20c.

LEEK.

CULTURE.—Sow the seed in early Spring, in rows a foot apart, and thin the plants six inches apart in the rows.

Large American Flag. This is the best variety; it grows to good size and very uniform. Per pkt., 5c.; oz., 25c.

LETTUCE.

CULTURE.—To raise good lettuce, a rich soil and an abundant supply of manure is necessary; sow seed in hotbed, in March, to be set out in open ground when the weather permits. For succession, sow in open ground in early Spring at intervals of two weeks till the first of August. Plants should be set a foot apart each way.

Early Curled Simpson. Forms a close compact mass of curly leaves; properly speaking it does not head, but is one of the best for family use; early, crisp and tender. Per pkt., 5c.; oz., 10c.

Black Seeded Simpson. Larger than the Early Curled. Per pkt., 5c.; oz., 10c.

Big Boston. Heads large, very compact and crisp; light green. Per pkt., 5c.; oz., 10c.

Tennisball. Black Seeded. A good forcing variety, forming a hard head, making but few outer leaves, and can be planted quite closely under glass, from 6 to 7 inches apart. Per pkt., 5c.; oz., 15c.

Boston Market. Largely grown about Boston for market, under glass and in open ground. Per pkt., 5c.; oz. 15c.

New York. Very large, solid and a sure header. Per pkt., 5c.; oz., 20c.

Mass' Woodstock. A superior lettuce, forming solid heads of large size, with but few outer leaves, and shows but little tendency to run to seed in hot weather. It is of excellent flavor, very crisp and tender. Per pkt., 10c.

Hanson's. Exclusively grown by market gardeners, and is always sure of making large heads of good quality. Per pkt., 5c.; oz., 15c.

Paris Cos. White. Romaine or Celery Lettuce. Per pkt., 5c.; oz., 15c.

California Cream Butter. Medium early; forming large solid heads; crisp and tender; stands the Summer heat well. Per pkt., 5c.; oz., 15c.

All the Year Round. A well known variety; hardy, solid and crisp. Per pkt., 5c.; oz., 15c.

Salamander. One of the best for Summer use; forming large heads, and stands the Summer heat well. Per pkt., 5c.; oz., 15c.

MARTYNIA.

CULTURE.—Sow last week in May in open ground, 3 feet apart each way; seed pods used for pickles; pick when small and tender.

Proboscidea. Per pkt., 10c.; oz., 30c.

MELON—Musk.

CULTURE.—Sow seed about the middle of May, in hills about 6 feet apart each way; when large enough, thin out to four in a hill; pinch off the leading shoots, and if the fruit is thinned out those that remain will be sure to ripen. Before planting, the soil should be thoroughly enriched by well rotted manure.



MELON, NEW EARLY HACKENSACK.

New Early Hackensack. Deeply netted and ribbed; green flesh; fine flavor and very productive. Per pkt., 5c.; oz., 10c.

Cosmopolitan. One of the most distinct and uniformly handsome melons ever introduced. The hardy vine is wonderfully productive of globular fruits, which are densely covered with gray netting. Very sweet, melting and high flavored; unsurpassed in quality and perfection of form. Per pkt., 5c.; oz., 10c.

Nutmeg. Fruit nutmeg shaped; flesh greenish yellow, rich and sugary. Per pkt., 5c., oz., 10c.

Skillman's Netted. Fruit roundish oval; flesh deep green; sweet and richly perfumed; an early and delicious variety. Per pkt., 5c.; oz., 10c.

Miller's Cream. Flesh is rich salmon color; very thick and sweet; rind very thin and finely netted. Per pkt., 5c.; oz., 10c.

Large Yellow Canteloupe. Flesh reddish orange; sweet and of good flavor; early and very productive. Per pkt., 5c.; oz., 10c.

The Banquet. Flesh dark rich salmon, of delicious flavor; uniformly deep; of medium size; flat on both ends and more beautifully netted than any known variety. Per pkt., 5c.; oz., 15c.

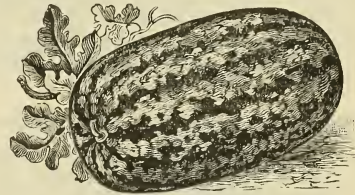
Montreal Improved Green Nutmeg. Nearly round; growing to large size; deeply ribbed; skin green and netted; flesh green and thick. Per pkt., 5c.; oz., 10c.

Banana. Melon slender, about 2 feet long; of good quality and flavor when thoroughly ripe. Per pkt., 5c.; oz., 10c.

Watermelons.

CULTURE.—Same as Musk Melon, except that the hills should be 8 feet apart each way.

Mountain Sweet. Fruit oblong; dark green; rind thin; flesh red, solid and sweet. Per pkt., 5c.; oz., 10c.



WATERMELON, BLACK SPANISH.

Black Spanish. Round, dark green, flesh red. Per pkt., 5c.; oz., 10c.

Cuban Queen. Fruit of largest size; flesh bright red; deliciously sweet. Per pkt., 5c.; oz., 10c.

The Boss. Oblong; dark green; flesh deep red; rind thin; a good variety. Per pkt., 5c.; oz., 10c.

Phinney's Early Oval. Very early and sweet; flesh deep red; good variety for home growing. Per pkt., 5c.; oz., 10c.

Ice Cream. White Seeded. Fruit is almost round; the skin light green; slightly mottled; flesh bright red, and very solid, and of delicious flavor. Per pkt., 5c.; oz., 10c.

Citron. Fruit almost round; of small size; used in making preserves; seed red. Per pkt., 5c.; oz., 10c.

Hungarian Honey. Melon round; dark green; flesh rich and very sweet; extra early. Per pkt., 5c.; oz., 10c.

MUSTARD.

CULTURE.—Sow thickly in early Spring, in shallow drills; if used for salad, cut when about 2 inches high; for crop of seeds, thin out the plants to about six inches apart.

White London. Leaves used for salad; grows very rapidly. Per oz., 5c.; $\frac{1}{4}$ lb. 15c.

OKRA OR GUMBO.

CULTURE.—Sow seed in the first of June in drills, 2 inches deep, the rows from 2 to 3 feet apart and thin to 12 inches apart in rows. The long pods when young are used in soups and stews.

White Velvet. Pods are round and smooth; very tender; the best variety grown. Per pkt., 5c.; oz., 10c.; $\frac{1}{4}$ lb., 25c.

Dwarf Green. Early and productive. Per pkt., 5c.; oz., 10c.; $\frac{1}{4}$ lb. 20c.

ONION.

CULTURE.—The Onion thrives best in a rather deep, rich loam soil, and unlike most vegetables succeeds well when cultivated on the same ground successive years. The seed should be sown in early Spring in drills a foot apart, and when the plants are well up they should be thinned to 3 or 4 inches apart in the rows; thorough cultivation through the Summer is necessary. One ounce for 100 feet of drill; 5 or 6 pounds in drills for an acre.

Yellow Globe Danvers. The most profitable variety to grow; a good keeper and a standard sort. Per pkt., 5c.; oz., 15c.; $\frac{1}{4}$ lb., 35c.; 1 lb., \$1.

White or Silver Skin. One of the leading sorts of white flat onion; an excellent keeper and good yielder; largely grown for pickling. Per pkt., 5c.; oz., 20c.; $\frac{1}{4}$ lb., 75c.; 1 lb., \$2.50.

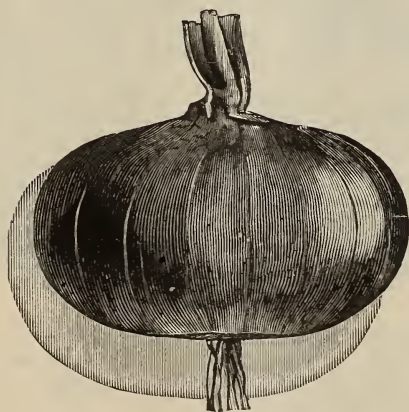
Large Red Weathersfield. A favorite sort for general crop; a large yielder and good keeper. Per pkt., 5c.; oz., 15c.; $\frac{1}{4}$ lb., 45c.; 1 lb., \$1.40.

Southport Yellow Globe. Nearly round; of mild flavor; a good keeper; one of the best. Per pkt., 5c.; oz., 15c.; $\frac{1}{4}$ lb., 50c.; 1 lb., \$1.40.

Spanish and Italian Varieties.

Spanish King or Prize Taker. Of a rich straw color, and of enormous size, averaging 12 or 14 inches in circumference; the flavor is mild and delicate, making the Prize Taker a favorite for slicing for salads. To obtain best results, sow early under glass and transplant to open ground. Per pkt., 5c.; oz., 25c.; $\frac{1}{4}$ lb., 60c.

Adriatic Barletta. Largely used for pickling; early, small, pure white; flesh firm and mild in flavor; a very quick grower. Per pkt., 5c.; oz., 20c.; $\frac{1}{4}$ lb. 75c.



ONION, LARGE RED WEATHERSFIELD.

Onion Sets.

White Sets. - - - - Per qt., 30c.; pk., \$1.25
Yellow Sets. - - - - Per qt., 25c.; pk., \$1.00

PARSLEY.

CULTURE.—Sow in very early Spring, previously soaking the seed for several hours in warm water, in rows about a foot apart; thin out plants to 3 or 4 inches apart in the rows; for Winter use, protect by a cold frame.

Champion Moss Curled. A very beautiful crimped and curled variety. Per pkt., 5c.; oz., 10c.; $\frac{1}{4}$ lb., 30c.

Fern Leaved. Fine for table decoration. Per pkt., 5c.; oz., 10c.; $\frac{1}{4}$ lb., 30c.

Extra Double Curled. A dwarf variety beautifully curled; excellent for garnishing. Per pkt., 5c.; oz., 10c.; $\frac{1}{4}$ lb., 30c.



PARSLEY, DWARF EXTRA CURLED.

PARSNIPS.

CULTURE.—Sow as early in the Spring as the weather will permit, in drills 15 inches apart, covering one-half inch deep. When well up, thin out to 5 or 6 inches apart in the rows. Parsnips are improved by freezing.

Hollow Crown. Best for general use. Per pkt., 5c.; oz., 10c.; $\frac{1}{4}$ lb. 20c.; 1 lb. 50c.

Long Smooth. A fine flavored variety. Per pkt., 5c.; oz., 10c.; $\frac{1}{4}$ lb., 20c.; 1 lb., 50c.

PEAS.

CULTURE.—To secure early peas, plant the seed in light rich soil, and in a warm sheltered situation as early in Spring as possible; in rows 2 or 3 feet apart, or for the later and tall varieties, in double rows 6 or 8 inches apart, between which is placed the trellis or brush. Sow in succession at intervals until the first of June. One quart will sow 75 feet of drill.

Add 15c. per quart if sent by mail.

Extra Early and Early Varieties.

American Wonder. One of the earliest dwarf wrinkled peas in cultivation; of the finest quality; height, 12 inches. Per $\frac{1}{2}$ pt., 10c.; pt., 15c.; qt., 25c.; pk., \$1.50.

Premium Gem. Pods long and of a dark green color, an improvement on Little Gem. Very early and productive; height, 15 inches. Per $\frac{1}{2}$ pt., 10c.; pt., 15c.; qt., 25c.; pk., \$1.50.

Laxton's Alpha. One of the earliest wrinkled peas; of fine quality; pods large and well filled; height, 3 feet. Per $\frac{1}{2}$ pt., 10c.; pt., 15c.; qt., 25c.; pk., \$1.25.

Alaska. A smooth, blue, extra early variety; a most desirable pea for market gardeners; height, 2 feet. Per $\frac{1}{2}$ pt., 10c.; pt., 15c.; qt., 25c.; pk., \$1.25.

Improved Daniel O'Rourke. A favorite extra early variety; height, 3 feet. Per $\frac{1}{2}$ pt., 10c.; pt., 15c.; qt., 25c.; pk., \$1.15.

Excelsior. An extra early smooth pea, producing large, well filled pods; very sweet and fine flavored. Per $\frac{1}{2}$ pt., 10c.; pt., 15c.; qt., 25c.; pk., \$1.25.

Medium or Second Early.

Abundance. Pods from 3 to 3½ inches long, roundish and well filled, containing from 6 to 8 large wrinkled peas of excellent quality. Per ½ pt., 10c.; pt., 15c.; qt., 25c.; pk., \$1.25.

McLean's Advancer. Attains the height of 2½ feet; is a green wrinkled variety of fine flavor. Per ½ pt., 10c.; pt., 15c.; qt., 25c.; pk., \$1.25.

The Heroine. A medium early, green wrinkled pea; grows about 2½ feet high and is literally covered with its long pods; the quality of this pea is perfection; of a rich marrow like flavor. Per ½ pt., 10c.; pt., 15c.; qt., 30c.; pk., \$1.50.

Dwarf Champion. Height, about 3 feet; peas very large, of rich flavor, wrinkled; very profitable to grow. Per ½ pt., 10c.; pt., 15c.; qt., 25c.; pk., \$1.50.

Later or Main Crop.

Stratagem. A dwarf, wrinkled, blue marrow; producing large, well filled pods; of good flavor and a heavy cropper; height, 3 feet. Per ½ pt., 10c.; pt., 15c.; qt., 30c.; pk., \$1.75.

Bliss' Ever Bearing. Height, 3 feet; producing pods 3 to 4 inches long with 6 to 8 large wrinkled peas; of fine flavor. Per ½ pt., 10c.; pt., 15c.; qt., 25c.; pk., \$1.25.

Champion of England. This is yet one of the best of the late tall varieties; peas are wrinkled and of largest size, and of excellent quality; height, 5 feet. Per ½ pt., 10c.; pt., 15c.; qt., 25c.; pk., \$1.

Yorkshire Hero. A large podded, delicious marrow pea; of branching habit and prolific bearer; height, 2½ feet. Per ½ pt., 10c.; pt., 15c.; qt., 25c.; pk., \$1.25.

Juno Pea. See Novelties. Per pt., 15c.; qt., 25c.; pk., \$1.50.

Telephone. A good main crop sort for the family garden; wrinkled; pods and peas large and of good flavor; height, 4½ feet. Per ½ pt., 10c.; pt., 15c.; qt., 25c.; pk., \$1.50.

PEPPERS.

CULTURE.—Sow seed in hotbed, in March or early April and transplant to open ground when all danger of frost is past, in rows 2 feet apart and 18 inches apart in the rows.

Ruby King. Fruit 4 to 6 inches long, bright red, very mild in flavor; one of the best for general use. Per pkt., 5c.; oz., 25c.

Large Bell or Bull Nose. Large and of mild flavor; much used for pickling. Per pkt., 5c.; oz., 25c.

Sweet Mountain or Spanish. Similar to the Bull Nose; large and of mild flavor; used to make stuffed pickles. (Mangoes.) Per pkt., 5c.; oz., 25c.

Golden Dawn. Shape and size like the Large Bell; of mild flavor; color yellow. Per pkt., 5c.; oz., 25c.

Long Red Cayenne. Very pungent; Per pkt., 5c.; oz., 25c.

Chili. Very small and prolific; used for making pepper sauce; very pungent. Per pkt., 5c.; oz., 25c.

PUMPKIN.

CULTURE.—Usually planted in fields of corn; sow in early Spring in hills 8 to 10 feet apart each way.

Large Cheese. A flat pumpkin; best of all for pies and table use. Per pkt., 5c.; oz., 10c.; ¼ lb., 20c.; 1 lb., 50c.

Large Tours or Mammoth. Grows to an immense size; often weighing over 100 lbs.; flesh of a salmon color. Per pkt., 5c.; oz., 10c.; ¼ lb., 35c.; 1 lb., \$1.

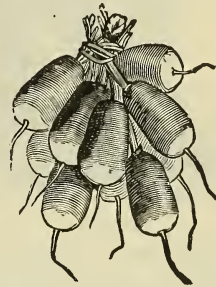
Connecticut Field. Largely grown for feeding stock. Per pkt., 5c.; oz., 10c.; ¼ lb., 20c.; 1 lb., 40c.

Mammoth Potiron. The largest pumpkin grown; known to have been grown to weigh nearly 200 lbs., and always takes the premium at country fairs for size. Per pkt., 5c.; oz., 15c.

Small Sugar. Generally grown for table use. Per pkt., 5c.; oz., 10c.; ¼ lb., 20c.

RADISH.

CULTURE.—The seed should be sown as early in Spring as the ground can be worked, and in succession every two weeks, in rows about a foot apart. Radishes, to be good, must be grown quickly; sow Winter varieties in the Fall.



RADISH, FRENCH BREAKFAST.

French Breakfast. A variety of quick growth, mild, crisp and tender; good for forcing. Per pkt., 5c.; oz., 10c.

Early Scarlet Turnip. Bright scarlet, crisp and of mild, delicate flavor; one of the best for the private garden. Per pkt., 5c.; oz., 10c.

Beckert's Chartier. Color at top is crimson and the tip is white; attaining a large size before it becomes unfit for use. Per pkt., 5c.; oz., 10c.

Long Scarlet Short Top. A variety largely grown for market. Per pkt., 5c.; oz., 10c.

Rose China Winter. Color, bright rose; fine for Winter use. Per pkt., 5c.; oz., 10c.

Long Black Spanish. One of the hardiest and best for Winter use. Per pkt., 5c.; oz., 10c.

California Mammoth White Winter. A white fleshed radish of excellent quality. Per pkt., 5c.; oz., 10c.

RHUBARB.

CULTURE.—Sow early in Spring, in drills a foot apart; thin out to about 8 inches apart in the rows; when well advanced transplant the following Spring in deep rich soil 3 feet apart each way; may also be propagated by dividing the roots of old plants, either in the Fall or Spring.

Victoria. Very large; later than the foregoing variety. Per. pkt., 5c.; oz., 20c.

SALSIFY OR VEGETABLE OYSTER.

CULTURE.—Sow early in the Spring in drills 15 inches apart; cover the seed an inch and a half in depth, and when the plants are strong enough thin to 6 inches apart.



SALSIFY.

Mammoth Sandwich Island. An improved variety, superior in size and equal in flavor to the older sorts. Per pkt., 10c.; oz., 15c.; $\frac{1}{4}$ lb., 35c.

SPINACH.

CULTURE.—Sow in early Spring, in rows 15 inches apart, at intervals of two weeks, until the first of July. For early cutting in Spring, seed may be sown in August and September, and should be covered with straw during Winter.

Thick Leaved. Producing large, thick leaves and standing a long time before running to seed. Per pkt., 5c.; oz., 10c.; $\frac{1}{4}$ lb., 15c.; 1 lb., 35c.

Long Standing. Dark green; the longest standing before running to seed. Per pkt., 5c.; oz., 10c.; $\frac{1}{4}$ lb., 15c.; 1 lb., 35c.



SQUASH, BOSTON MARROW.

Round Leaved. A standard variety. Per pkt., 5c.; oz., 10c.; $\frac{1}{4}$ lb., 15c.; 1 lb., 35c.

Large Round Leaved Viroflay. A newer sort, with very large, thick leaves. Per pkt., 5c.; oz., 10c.; $\frac{1}{4}$ lb., 15c.; 1 lb., 35c.

SQUASH.

CULTURE.—The same as for melons. The bush sorts may be planted 4 feet apart; the running sorts, 8 to 10 feet apart.

White Summer Crookneck. The fruit is similar in size and shape to the Yellow Crookneck, but of a beautiful ivory white color, and unsurpassed in quality. Per pkt., 5c.; oz., 10c.

Early Yellow Summer Crookneck. A bush sort; of fine flavor, and considered the best Summer squash. Per pkt., 5c.; oz., 10c.

Golden Custard Bush. Very productive; scalloped, of large size and good quality; bright orange; bush sort. Per pkt., 5c.; oz., 10c.; $\frac{1}{4}$ lb., 20c.

Boston Marrow. For early Autumn or late Summer; color bright orange; flesh dry and of good flavor. Per pkt., 5c.; oz., 10c.; $\frac{1}{4}$ lb., 20c.

Hubbard. The best Winter sort, and a good keeper; skin dark green; flesh dry and of good flavor. Per pkt., 5c.; oz., 10c.; $\frac{1}{4}$ lb., 20c.

Marblehead. An excellent variety, resembling the Hubbard, but lighter in color. Per pkt., 5c.; oz., 10c.; $\frac{1}{4}$ lb., 20c.

Essex Hybrid. Flesh dry, sweet and thick, and of a bright orange color, also of good keeping quality. Per pkt., 5c.; oz., 10c.; $\frac{1}{4}$ lb., 20c.

Mammoth Chili. The largest of all squashes; good for exhibition purposes. Per pkt., 5c.; oz., 10c.



SQUASH, SUMMER CROOKNECK.

American Turban. Per pkt., 5c.; oz., 10c.

Sibley's or Pikes Peak. A fine Winter squash of good keeping qualities; shell hard and pale green; flesh orange red, dry and rich in flavor. Per pkt., 5c.; oz., 10c.

Green Mountain. This sterling novelty originated in Northern Vermont and is one of the best Winter squashes of recent introduction. Although somewhat like the Hubbard, this grand new variety differs materially from that old and popular sort in being superior in point of size as well as in sweetness and color of flesh. The fruit is uniformly round, symmetrical and larger than the Hubbard and has a beautiful netting of darker green instead of the wartiness of that variety. The rind is thin but hard, and the flesh very deep orange red, without any of the objectionable green tinge near the rind, so common in the best Winter sorts. It cooks

very quickly and evenly and is the best of all squashes for pies; the vine is hardy, early and certain to mature the large crop it produces. Per pkt., 5c.; oz. 10c.

Fordhook. An extremely handsome squash; color, bright yellow outside and straw yellow within; flesh, dry and sweet, and is one of the best keepers of all the Winter squashes. It matures early and is everywhere a sure cropper. The squashes can be used at any stage of their growth and are superior in flavor to any Summer squash. Per pkt., 5c.; oz., 10c.

TURNIP.

CULTURE.—For Summer use, sow seed in early Spring, in drills 15 inches apart, and thin out to 6 inches apart in the rows. For succession, sow at intervals of two weeks until the end of August.

Red Top Strap Leaf. Quick grower and of mild flavor; one of the best for early use; flesh white. Per pkt., 5c.; oz., 10c.; $\frac{1}{4}$ lb., 20c.

White Egg. Shape nearly oval; flesh firm and fine grained; flavor of the very best, mild and sweet. Per pkt., 5c.; oz., 10c.; $\frac{1}{4}$ lb., 20c.

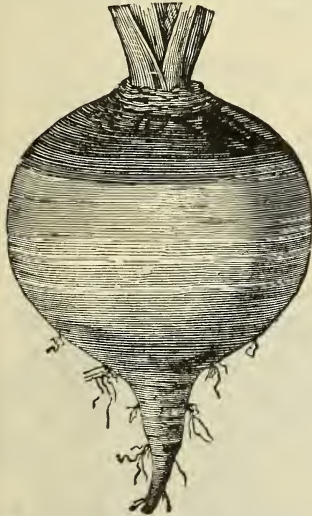
Yellow Globe. One of the best varieties for general crop, keeps well until late in the Spring; of large size. Per pkt., 5c.; oz., 10c.; $\frac{1}{4}$ lb., 20c.; 1 lb., 50c.

Yellow Aberdeen. Hardy and productive; a good keeper; globe shape and of good quality. Per pkt., 5c.; oz., 10c.; $\frac{1}{4}$ lb., 20c.; 1 lb., 50c.

Extra Early Purple Top Milan. Very early; flat in shape and of excellent quality. Per pkt., 5c.; oz., 10c.

Ruta-Baga or Swedish Turnip.

Largely grown for feeding stock, good also for table use.



IMPROVED AMERICAN RUTA-BAGA.

Improved American Purple Top. Flesh yellow, solid and good; the best of the Ruta-Bagas. Per pkt., 5c.; oz., 10c.; $\frac{1}{4}$ lb., 20c.; 1 lb., 50c.

Laing's Improved. A good variety for table use. Per pkt., 5c.; oz., 10c.; $\frac{1}{4}$ lb., 20c.; 1 lb., 50c.

Skirving's Purple Top. Excellent; a good keeper. Per pkt., 5c.; oz., 10c.; $\frac{1}{4}$ lb., 20c.; 1 lb., 50c.

Sweet German. Flesh a pure white; solid; mild and well flavored; the best for table use. Per pkt., 5c.; oz., 10c.; $\frac{1}{4}$ lb., 20c.; 1 lb., 50c.

TOMATO.

CULTURE.—Sow in hotbed or box in the house; transplant when about 2 or 3 inches high into boxes or small pots; transplant a second time to larger pots, which will make them strong and branchy. Set out in open ground the first of June.

Dwarf Champion. Distinct in its habits; early and prolific; fruit medium size and bright scarlet; solid and with few seeds. Per pkt., 5c.; oz. 25c.

Perfection. Very early and productive; fruit of good size, smooth and solid; color, bright scarlet. Per pkt., 5c.; oz., 20c.

Acme. Early; of medium size; smooth; very solid and productive. Per pkt., 5c.; oz., 20c.

Favorite. Large; of perfect shape; very smooth; dark red; solid. Per pkt., 6c.; oz., 20c.

Ponderosa. Of large size; dark red and solid; shape irregular; medium early. Per pkt., 10c.; oz., 25c.

Beauty. One of the best for family or market use; medium size; very solid and smooth; a good yielder. Per pkt., 5c.; oz., 20c.

Golden Queen. Has all the good qualities of the best red varieties; color is a golden yellow. Per pkt., 5c.; oz., 25c.

Yellow Plum. Used for pickling and preserving. Per pkt., 5c.; oz., 20c.

New Stone. A large, very smooth, bright scarlet tomato; ripening evenly to the stem without cracking. Flesh firm, solid and of excellent quality. Good for shipping. Per pkt., 5c.; oz., 25c.

Atlantic Prize. An extra early and very productive variety, valuable to market growers. Per pkt., 5c.; oz., 20c.

Extra Early Advance. Fruit large, bright red and very solid; one of the earliest tomatoes grown. Per pkt., 5c.; oz., 20c.

Volunteer. Color, bright red; solid and of handsome shape. Per pkt., 5c.; oz., 20c.

Vegetable Plants.

Cabbage Plants.

Early Summer, Jersey Wakefield, and Winnigstadt, ready April 1st. Per 100, 65 cts.

Cabbage Plants—Late. Per 100, 35 cts.

Cauliflowers.

Snowball, ready April 1st. Per doz., 20 cts.; 100, \$1.

Cauliflowers—Late, ready in July. Per doz., 12 cts.; 100, 75 cts.

Celery Plants.

(TRANSPLANTED.)

White Plume, Gold Self-Blanching, ready in June. per 100, 75 cts.

Boston Market, New Rose, and Golden Dwarf, ready in July. Per 100, 65 cts.

Lettuce Plants.

Best varieties, ready in early Spring. Per doz., 10 cts.; 100, 50 cts.

Pepper Plants.

Pot grown, ready May 15th. Per doz., 25 cts.

Tomato Plants.

Pot grown, of best kinds, ready May 15th. Per doz., 50 cts.

Larger size, 5 inch pot. Per doz., \$1.00.

General List of Choice Flower Seeds.

The following list contains a selection of the best and most popular Annual, Biennial and Perennial Flowers.

Flower Seeds in Packets are sent free by mail at Catalogue prices.

EXPLANATION OF THE FOLLOWING ABBREVIATIONS.

- H A**—**HARDY ANNUAL.** Flowering and lasting one season, and can be sown in open borders.
H H A—**HALF HARDY ANNUAL.** Lasting one season and requiring to be sown under protection.
B—**BIENNIAL.** Lasting two years and generally flowering the second year.
H P—**HARDY PERENNIAL.**
G P—**GREENHOUSE PLANT.**



ALYSSUM.

- Abutilon, G P** choice mixed, 3 feet. A well known greenhouse plant with pendent flowers; bright colors, richly veined and stripedPkt. 10c
Aconitum Napellus, H P (Monkshood), 3 feet. Dark blue flower on long spikes.... “ 5c
Acroclinium, H H A everlasting flowers; mixed, single flowering..... “ 5c
 Mixed, double flowering “ 5c
Adlumia Cirrhosa, (Mountain Fringe or Alleghany Vine,) climber, 10 feet..... “ 10c
Adonis Æstivalis, H A (Flos Adonis), crimson, 1 foot “ 5c
Autumnalis, H A (Pheasant's Eye), 1 foot. Blood red, black eye..... “ 5c
Vernalis, H P yellow flowers..... “ 5c
Ageratum, H H A light blue..... “ 5c
 Imperial Dwarf, blue, 6 inch..... “ 5c
 Imperial Dwarf, white, 9 inch..... “ 5c
Alyssum, Sweet, H A flowers white; valuable for beds and edgings, 8 inches.... “ 5c
 Little Gem (New), very dwarf; pure white; very free flowering “ 5c

- Amaranthus Melancholicus Ruber,**
 H H A foliage, blood red, 2 feet..... Pkt. 5c
Salicifolius (Fountain Plant), red and yellow foliage, 3 feet..... “ 5c
Tricolor (Joseph's Coat), foliage, scarlet, yellow and green, 2 feet..... “ 5c
Antirrhinum Majus, H P (Snap Dragon), finest mixed “ 5c
Aquilegia, H P (Columbine), single mixed, “ 5c
 Double mixed “ 5c

ASTERS, H H A.

(Packets, 100 Seeds.)

- Perfection, Truffaut's** improved pæony-flowered; finest mixed; height, 2 feet....Pkt. 10c
 In separate colors: **WHITE, CRIMSON, PURPLE, AZURE BLUE, CARMINE, BRILLIANT ROSE**each “ 10c



ADONIS VERNALIS.

- Victoria, height, 1½ feet.** Finest mixed, “ 10c
 In separate colors: **CRIMSON, PEACH BLOSSOM PINK, PURPLE, SKY BLUE, SCARLET, WHITE** each “ 10c

- Mignon**, height, 15 inches. Mixed colors, Pkt. 10c
 In separate colors: BRIGHT BLUE, CARMINE
 RED, PEACH BLOSSOM PINK, SNOW
 WHITE each " 10c
Pearl, 1 foot in height. PEARL BLANCHE,
 PEARL ROUGE each " 10c



BELLIS PERENNIS.

- Comet**, height, 1 foot. Mixed colors.... " 10c
 In separate colors: CARMINE, LIGHT BLUE,
 PINK, WHITE.....each " 10c
Late Flowering, branching; mixed.... " 10c
 In separate colors: WHITE, PINK and
 PURPLE each " 10c
Betteridge's Quilled, 2 feet. Mixed colors " 5c
Snowball, height, 1½ feet..... " 10c
Dwarf Pyramidal Bouquet, height, 1
 foot. Mixed colors..... " 10c
Dwarf Chrysanthemum Flowered,
 mixed..... " 10c
Balloon Vine, H A climber, 10 feet. Small
 white flowers; seed vessels shaped like
 small balloons " 5c
Balsams, double, H H A 1½ feet. White,
 striped red and purple..... " 5c
 Crimson, spotted white..... " 5c
 Choice double mixed " 5c



CALLIOPSIS.

- Begonia**, tuberous rooted, G P single
 mixed..... " 15c
 Tuberous rooted, double mixed..... " 25c
 Rex, ornamental leaves, mixed..... " 25c
 Vernon, a fine variety for bedding..... " 10c

- Bellis Perennis**, H P (Double Daisy);
 double white; Longfellow, large double
 pink; double mixed, all colors....each Pkt. 10c
Browallia Elata, H H A 1½ feet. Mixed
 colors " 5c
Calceolaria Hybrida, G P large flower-
 ing, spotted, mixed..... " 35c
Calendula, H A 1 foot. Prince of Orange,
 large double yellow..... " 5c
 Meteor, double yellow, striped orange.... " 5c
Calliopsis, or Coreopsis, H P mixed.... " 5c
 Dwarf, fine for bedding; 1 foot. Mixed.... " 5c
Campanula, H P (Bell Flowers), pyramid-
 alis, mixed, 4 feet. Colors, blue and
 white " 5c
 Rotundifolia, mixed (Bluebell or Hare-
 bell); flowers blue and white..... " 10c
Candytuft, H A 1 foot. Empress, white.... " 5c
 White Rocket " 5c
 Mixed colors. " 5c
Canterbury Bells, H P 2 feet. Single
 mixed; rose, blue and white..... " 5c
 Double mixed: rose, blue and white..each " 5c



DIANTHUS CHINENSIS.—See page 20.

- Carnations**, H H P finest double mixed.... " 15c
 Grenadin, double brilliant scarlet flowers. " 10c
 Marguerite, fine mixed colors; flowers in
 four months from day of sowing..... " 10c
Celosia, or Cocksecomb, H H A (plumosa),
 of branching habit; crimson color..... " 5c
 Dwarf mixed, many colors; 1 foot..... " 5c
Centaurea cyanus, H A (Bachelor Button),
 mixed " 5c
 Double " 5c
Chrysanthemum, H A (Painted Daisy),
 Burridgeanum, white, crimson and yel-
 low " 5c
 Single varieties, mixed..... " 5c
 Double, yellow and white; height, 1 foot.... " 5c
Cineraria hybrida, G P or flowering varie-
 ties; large flowering, mixed..... " 35c
Clarkia, H A single, mixed; height, 1 to 2
 feet " 5c
 Double, mixed " 5c

- Cobæa Scandens, H H P well known
climbers; blue Pkt. 10c
- White " 15c
- Coleus, G P richly colored foliage plant;
fine hybrid mixed..... " 15c
- Convolvulus, Major, H A (Morning Glory),
mixed colors; height, 20 feet.. " 5c
- Minor (Morning Glory, dwarf), mixed col-
ors; 1 foot..... " 5c



ESCHSCHOLTZIA.

- Cosmos Hybridus, H A 4 to 6 feet. Large
flowering, mixed..... " 5c
- Cucumis Flexuosus, H H A (snake cu-
cumber), 8 feet. Curious fruit, 3 feet
long " 5c
- Cyclamen Persicum, G P finest mixed.. " 10c
- Giganteum, mixed..... " 25c
- Cypress Vine, H A 10 feet. Pretty trail-
ing vine, mixed..... " 5c
- Dahlia, H H P 4 to 6 feet. Choice double
mixed..... " 10c
- Single mixed, many colors..... " 10c



GODETIA.

- Datura, H H A 3 feet. Double golden, very
fragrant " 5c
- Fastuosa Fl. Pl., mixed, fine double varie-
ties " 5c
- Delphinium (Hardy Larkspur): formosum,
blue, white centre; 3 feet..... " 5c
- Grandiflorum Fl. Pl. H P very double,
large light blue flowers..... 15c
- Finest mixed, single varieties..... " 5c

- Dianthus Chinensis Fl. Pl. (Double China
or Indian Pink.) 1 foot. Mixed colors.. Pkt. 5c
- Heddewigii Fl. Pl. (Double Japan Pink,)
mixed colors. (See illustration on page
19)..... " 5c
- Laciniatus Fl. Pl. Large double fringed
flowers, mixed colors..... " 5c
- Double Snowflake, white; large double
fringed flowers..... " 10c
- Fireball, dwarf; double, scarlet..... " 5c



HIBISCUS AFRICANUS.—See page 21.

- Eschscholtzia, H A (California Poppies);
Californica, yellow..... " 5c
- Mandarin, large and bright scarlet flowers. " 5c
- Mandarin, double " 10c
- Finest mixed..... " 5c
- Gaillardia Grandiflora, H A mixed..... " 5c
- Lorenziana, or double flowering..... " 5c
- Globe Amaranth, H A mixed colors..... " 5c
- Godetia, H A finest mixed, all colors " 5c
- Gourds, Ornamental, H H A. In separate
varieties: Sponge or Dish Rag; White
Nest Egg; Dipper-shaped, Hercules Club;
Serpent's Gourd..... each 5c
- Mixed " 5c



DOUBLE HOLLYHOCK.—See page 21.

- Grasses, Ornamental, briza gracilis, small
quaking grass; annual, 1 foot..... " 5c
- Maxima, large panicles; annual, 1 foot.... " 5c
- Bromus brizæformis, elegant drooping
panicles; perennial, 1½ feet..... " 5c
- Stipa pennata (Feather Grass), fine bouquet
grass; perennial, 2 feet... " 10c
- Zea japonica variegata, 4 feet (Japanese
striped leaf corn)..... " 5c

Helichrysum (Everlasting); for Winter bouquets; double mixed large flowering. Pkt. 5c

Hibiscus, H A (Marshmallow); Africanus, yellow and brown; 2 feet (See illustration on page 20)..... " 5c

Californicus, white and carmine..... " 10c

Hollyhock, H P double white; double yellow; double deep rose. (See illustration on page 20)..... each " 10c

Double maroon; double mixed..... each " 10c

Collection of six separate colors..... 50 cent s

Ipomœa Noctiflora, H H A (Moonflower.. Pkt. 10c

Sinuata (the Noonday Glory), climber, flowers white, with wine throats..... " 10c

Heavenly Blue, flowers 4 to 5 inches across in large clusters of light blue, with yellow throat, very free flowering..... " 15c

Larkspur, H A Dwarf Rocket, double, mixed colors; 1 foot 5c

Tall Rocket, double, mixed colors; 2 feet.. 5c

Emperor, double, mixed colors..... " 5c

Linum Coccineum, H A (Scarlet Flax), 1 foot 5c

Lobelia Erinus, H A white and blue..... " 7c

Double blue 5c

Mixed varieties..... " 5c

Lobelia Compacta, Crystal Palace, dark blue..... " 10c

White Gem..... " 10c

Blue King " 10c

Lupinus, annual varieties, mixed..... " 5c

Marigold African, H A double mixed; yellow and orange shades..... " 5c

El Dorado, large flowers, very double; yellow and orange shades; 3 feet..... " 5c

Double French, mixed; yellow, brown and crimson colors; 1 foot..... " 5c

Pride of the Garden, immense flowers, very double, 8 to 10 inches in circumference; color deep golden yellow; 15 to 18 inches high " 15c

Marvel of Peru, H H A (Four o'clocks) mixed colors..... " 5c

Matricaria Alba Plenissima, double white Feverfew, bushy, annual garden plant, useful in cutting..... " 10c

Maurandya, annual climber, 6 to 8 feet. Suitable for vases; mixed..... " 10c

Barclayana, rich violet..... " 10c

Mignonette, H A large flowering; the common sweet mignonette..... Per oz., 15c; " 5c

Miles' Hybrid Spiral; spikes 8 to 12 inches long. Flowers white and very fragrant.. " 5c

Machet, large spikes; red flowers..... " 10c

Mimulus (Monkey Flowers), fine mixed spotted varieties..... " 10c

Moschatus (Musk Plant), foliage emits a strong musk perfume..... " 10c

Myosotis Palustris, H P (Forget-me-not) dark blue flowers, 6 to 12 inches..... " 10c

Alpestris, blue and white; 1 foot..... each " 5c

Nasturtium, Tom Thumb, or bedding varieties; rose..... " 5c

Coccinea, bright scarlet..... " 5c

Crystal Palace Gem, yellow, spotted maroon..... " 5c

King of Tom Thumbs, crimson..... " 5c

King Theodore, dark scarlet maroon..... Pkt. 5c

Golden King of Tom Thumbs..... " 5c

Mixed Tom Thumbs..... Per oz., 15c; " 5c

Tall climbing varieties, 6 to 10 feet. Rose... " 5c

Coccinea, bright orange scarlet..... " 5c

King Theodore, dark crimson..... " 5c

Atropurpureum, dark velvety crimson... " 5c

Mixed varieties, many colors.. Per oz., 15c; " 5c

Schillingi, lemon yellow, with maroon blotches " 5c

Pearl, white..... " 5c

Nemophila, H A finest mixed, bright colored flowers, in shades of blue, white and violet; 1 foot..... " 5c

Nicotiana Affinis, H H A 3 feet. Species of tobacco; flowers white and fragrant.. " 5c

Oenothera, H A (Evening Primrose), fine mixed; large showy flowers of various colors; 1 to 2 feet..... " 5c



PANSY.

Pansy, H H A Giant Trimardeau; a fine strain of very large flowers; mixed colors..... " 15c

Black or Faust..... " 10c

Emperor William, finest of the blues.... " 5c

Snow Queen, white..... " 10c

Gold margined..... " 5c

Bronze " 5c

Yellow " 10c

Azure blue..... " 5c

Mahogany " 5c

Beaconsfield, violet and white..... " 5c

Fire Dragon, fiery orange and bronze..... " 5c

Striped " 5c

Mixed, from the above sorts..... " 5c

Mammoth Butterfly, mixed..... " 20c

Superior Strain of Large Flowering Pansies, large white, with a purple eye. " 15c

Large white " 15c

Large yellow..... " 15c

Large Victoria..... " 15c

Large black " 15c

Large finest mixed..... " 15c

Petunia, H H A 1½ feet. Fine mixed single varieties	Pkt. 5c
Striped and blotched, single mixed.....	10c
Large flowering, fringed; superb strain, single.....	25c
Large flowering, double fringed; mixed colors.....	35c
Phlox Drummondii, H A 1 foot. Large flowering; in separate colors: White, scarlet, rose, yellow, striped, deep purple, crimson with white eye.....	each 10c
Mixed of above colors.....	1c
New dwarf, Fireball, glowing scarlet.....	10c
New dwarf, pure white.....	10c
New dwarf, mixed.....	10c
Collection of six colors.....	50c
Star of Quedlinburg, star shaped; mixed colors.....	10c
Drummondii, double mixed.....	10c



POPPY.

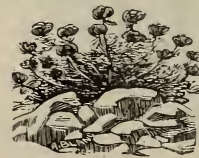
Poppy, H A 2 to 3 feet. Mephisto, single..	5c
Empress of China, large flower; satiny white, edged scarlet; single.....	5c
Flag of Truce, satiny white; single.....	5c
Danebrog, scarlet, with white cross in centre; single.....	5c
Shirley, semi-double, beautiful colors, mixed.....	5c
Iceland, 1 foot. Hardy mixed colors; single.....	10c
Mikado, double carnation-flowered; large double flowers, pure white, edged with scarlet	5c
Fairy Blush, large double fringed flowers; white, edged with rose.....	5c
Carnation-flowered, mixed; many colors..	5c
Pæony-flowered, mixed; many colors.....	5c
French ranunculus-flowered, double; mixed.....	5c

Primula Sinensis, G P (Chinese Primrose), Large flowering, fringed, mixed....	Pkt. 25c
Fern leaved, leaves long fern like; mixed..	25c
Double, mixed; fringed.....	50c
Portulaca, H A 6 inches; large double flowering, mixed.....	5c



PHLOX DRUMMONDII.

Ricinus Zanzbariensis: a new and distinct class of these handsome ornamental plants which surpass in size and beauty all the varieties hitherto known. The plants attain great dimensions, presenting a splendid aspect with their gigantic leaves; mixed seeds which include light and dark green, brown and brownish purple leaves.....	5c
Borboniensis, H H A (Castor Oil Plant), 15 feet. Immense foliage of violet color....	5c
Sanguineus, deep red foliage, 8 feet.....	5c
Mixed varieties.....	5c
Salvia Splendens, H H P (Scarlet Sage), 3 feet	5c
Scabiosa, H A (Morning Bride), 2 feet. Large double flowering; mixed.....	5c
Smilax, G P climber; excellent for decoration.....	10c
Stocks (Gillyflowers), dwarf; large flowering, double, Ten Weeks; in separate colors: White, canary, yellow, sky blue, blood red, violet, bright rose. (See illustration on page 23.).....	each 10c
Double mixed, large flowers.....	10c



PORTULACA, DOUBLE.

Sunflower, H A Helianthus macrophyllus giganteus, yellow; 6 feet.....	5c
Giant Russian, flowers 18 to 20 inches across.....	5c
Globosus fistulosus, very double, 6 feet....	5c

Sweet Pea, H A Alba Magnifica, white. Per pkt., 5c.; oz., 10c.; $\frac{1}{4}$ lb., 25c.
 Apple Blossom, pink blush. Per pkt., 5c.; oz., 10c.; $\frac{1}{4}$ lb., 25c.
 Blanche Ferry, dwarf, compact; colors, pink and white; similar to the well known "Painted Lady." Per pkt., 5c.; oz., 8c.; $\frac{1}{4}$ lb., 20c.
 Butterfly, white, suffused with lavender; large flowers. Per pkt., 5c.; oz., 8c.; $\frac{1}{4}$ lb., 20c.
 Captain of the Blues, blue. Per pkt., 5c.; oz., 10c.
 Cardinal, brilliant scarlet. Per pkt., 5c.; oz., 10c.
 Countess of Radnor, lavender. Per pkt., 5c.; oz., 10c.



TEN WEEK STOCKS.—See page 22.

Delight, white, flushed rosy pink. Per pkt., 4c.; oz., 10c.
 Emily Henderson, pure white, of large size. Per pkt., 5c.; oz., 8c.; $\frac{1}{4}$ lb., 20c.
 Mrs. Eckford, primrose yellow, fine. Per pkt., 5c.; oz., 10c.
 Mrs. Sankey, white. Per pkt., 5c.; oz., 10c.
 Orange Prince, orange, flushed with rich pink. Per pkt., 5c.; oz., 10c.
 Painted Lady, pink and white. Per pkt., 5c.; oz., 8c.; $\frac{1}{4}$ lb., 20c.



VERBENA.

Princess of Wales, white, blue and heliotrope. Per pkt., 5c.; oz., 10c.
 Scarlet Invincible, crimson scarlet. Per pkt., 5c.; oz., 8c.; $\frac{1}{4}$ lb., 20c.
 Splendour, crimson; per pkt., 5c.; oz., 10c. White; per pkt., 5c.; oz., 8c.; $\frac{1}{4}$ lb., 20c.

All Colors, finest mixed. Per oz., 6c.; $\frac{1}{4}$ lb., 12c.; 1 lb., 35c.
 Eckfords, large flowering, mixed. Per oz., 8c., $\frac{1}{4}$ lb., 20c.; 1 lb., 45c.
 Six distinct varieties, 25c.
 Twelve distinct varieties, 50c.
 Cupid, new dwarf, white; per pkt., 15c. Double mixed; per pkt., 15c.
 Sweet William, H P single mixed..... Pkt. 5c
 Double mixed..... " 5c
 Sweet Sultan, mixed..... " 5c
 Yellow, popular cutflower..... " 5c
 Tropæolum Lobbianum, H H A fine mixed. " 10c
 Canariense, Canary Bird Flower..... " 10c
 Verbena, H H P scarlet, striped blue and white.....each " 5c
 Fine mixed..... " 5c
 Mammoth, or large flowering, mixed... " 10c
 Viola Odorata, H P (English Sweet Violet). " 10c



ZINNIA.

Zinnia, H H A double dwarf; white, scarlet, orange, and canary.....each " 5c
 Dwarf double, mixed colors..... " 5c
 Tall double, mixed..... " 5c
 Zebra, double mixed colors..... " 10c

SEEDLINGS.

READY IN MAY.

ASTERS, in various colors; per doz., 25c.; 100, \$2.
 PHLOX DRUMMONDII, in various colors; per doz., 25c.; 100, \$2.
 NASTURTIUMS, DWARF; from pots, each, 5c.; per doz., 40c.
 NASTURTIUMS, TALL; from pots, each, 5c.; per doz., 40c.
 BALSAMS; TEN WEEKS STOCK; ZINNIAS; CALENDULAS; per doz., 25c.
 PANSIES, large flowering; per doz., 30c.; 100, \$2.50.

General Collection of Greenhouse and Bedding Plants.

We make the following discount on plants :

Those sending \$1.00 can select to the amount of	\$1.15
“ “ “ “ “ “	2.30
“ “ “ “ “ “	3.50
“ “ “ “ “ “	4.65
“ “ “ “ “ “	5.85

ABUTILON.

(*Flowering Maple*)

A general favorite, of easy culture and continuity of bloom throughout summer and winter months. Flowers bell shaped.

Boule de Neige, fine, pure white.

Darwinii, orange scarlet.

Erecta, cerise, flowers erect.

Fraserii, dazzling crimson.

Golden Bells, yellow.

Thompsonii Fl. Pl., foliage variegated; double flowers.

Eclipse, a splendid variegated variety; especially suited for baskets and vases. Marbled green yellow.

Mesopotanicum Variegatum.

Mary Miller, pink.

Souvenir de Bonn, See Novelties.

Rosaflora, pink.

Each, 10c.; per doz., \$1.

Dwarf Varieties.

Growing about 18 inches high.

Calypso, white.

Sanglant, deep red.

Each, 10c.; per doz., \$1.

ACALYPHA MACAFEANA.

Beautiful variegated foliage. Each, 15c.

ACHYRANTHES.

Colored foliage plants; valuable for vases and baskets or ribbon beds. Thrive well in partial shade.

Assorted. Each, 8c.; per doz., 85c.; 100, \$6.

AGAPANTHUS.

Umbellatus (blue Lily of the Nile); blooms in large umbels; flowers a shade of light blue. Each, 25c.

AGAVE AMERICANA VAR.

(*Century Plant*.)

15c. to \$1.

AGERATUM.

Flowering through the summer and winter months; good for bedding.

Blanche, white, 9 inches high.

Cope's Gem, blue, 6 inches high.

Mexicanum, light blue, 15 inches high.

Yellow.

Each, 8c.; per doz., 75c.; 100, \$5.

ALLAMANDA WARDLEYANA.

A very showy greenhouse climber, bearing large and beautiful golden yellow flowers. Each, 25c.

Alocasia Macorrhiza Variegata.

A handsome ornamental leaved plant, foliage nearly as large as *Caladium Esculentum*, light green, broadly splashed with white. Each, 25c. to \$1.

ALTERNANTHERA.

Dwarf growing, variegated foliage plants; excellent for bedding.

Aurea Nana, yellow, fine for carpet bedding.

Paronychoides Major, brilliant red.

Versicolor, light rose and crimson.

Each, 8c.; per doz., 75c.; 100, \$5.

AMARYLLIS.

Vittata Hybrids. Each, 35c.

ANANASSA SATIVA VAR.

(*Variegated Pineapple*.)

Each, \$1.50.



BEGONIA REX.—See page 25.

Anthericum Vittatum Var.

A beautiful greenhouse or conservatory plant, with recurved and graceful foliage; leaves are dark green, marked with broad strands of a creamy white color; small, white, star-shaped flowers, on long stems; very ornamental as a specimen or basket plant. Each, 15c. to 50c.

Anthurium.

Ferriense, flowers a deep salmon. Each, \$2 and \$5.

Scherzerianum, dwarf growing; flowers a brilliant scarlet. Each, \$1.

Crystallinum, beautiful foliage plant. Each, \$1 to \$2.

Magnificum, beautiful foliage plant. Each, \$1 to \$2.
Grande, beautiful foliage plant. Each, \$1.
Warocqueanum, beautiful foliage plant. Each, \$5

ARDISIA CRENULATA.

Dark evergreen foliage, with clusters of brilliant red berries. Each, 15c.

Asparagus Plumosus Nanus.

Leaves a bright green, gracefully arched; used in place of smilax for green, remaining fresh a long time after it is cut. Each, 25c.

Tenuissimus, handsome climbing plant for the window. Each, 15c.

ASPIDISTRA LURIDA.

A beautiful window or conservatory plant, of easy culture. Each, 25c.

Lurida Variegata, a variety of the above; leaves variegated with creamy white stripes. Each, 25c.

AZALEA INDICA.

Beautiful plants for greenhouse or parlor, flowering profusely during the winter and spring months.

Double Flowering.

A. Borsig, pure white.
Apollo, blood red, semi-double.
Bernard Andrea Alba, very fine, pure white.
Deutsche Perle, pure white, flowers of good form; good for forcing.
Docteur de Moor, deep rose, with violet reflections.
Francois de Vos, clear red.
Empress of India, rose, edged with white.
Mme. C. van Langenhove, clear white, striped and stained with red.
Niobe, pure white, of good substance and form.
Raphael, pure white.
Simon Mardner, large flower, intense rose.
Vervaeana, a magnificent variety; color, a beautiful rose, deeply edged with white; large flowers.

Single Flowering.

Comte de Chambord, bright pink, edged with creamy white
Roi d'Hollandi, blood red, with dark spots.
Sigismund Rucker, rose, striped with white.
Versicolor, fine white variety, striped and stained with deep red.
Mme. de Grevy, salmon color, edged white.
 Each, 55c. to \$2.

BEGONIA.

Varieties flowering through the summer and winter months

Alba Picta.
Argentea Guttata, leaves dark chocolate, flowers white.
Floribunda Rosea, graceful habit, flowers pink.
Glaucophylla Scandens, of a drooping habit, with large panicles of orange salmon flowers; good for hanging baskets, flowering during the winter.
Incarnata.
Lobata Variegata.
Manicata Aurea Var.
Maxii, See Novelties.
Metallica, crimson and maroon, foliage of a metallic lustre; flowers pink.
Nigricans, leaves of a dark metallic color.
Rubra, bright scarlet flowers.

Riciniifolia.

Semperflorens Gigantea, bright green foliage, flowers bright scarlet.

Vernon, bright green leaves, bright carmine flowers.

Each, 10c.; per doz., \$1.

Begonia Rex.

Valuable for their grand and varied marked leaves; of the many varieties of this fine species we enumerate the newest and best. (See illustration on page 24.)

Adolph Pollock, metallic and deep gray.

Count de Liminghi, silvery; ribs redish.

Countess Louise d'Erdody, leaves dark silvery, of a metallic lustre, base of the leaf growing in a spiral like way.

Duc de Brabant, centre dark, edges light green.

Kaiser Wilhelm, light green, spotted deep green.

Louis Closson, bright metallic color.

Madame Liebold, zinc colored with green spots.

President Carnot, metallic green, blotched silver.

Quadricolor, silvery, dark centre and light green.

Voi Lactee, silvery, with green ribs.

Walter Lamb, silvery gray, with dark ribs.

Each, 15 to 25c.; per dozen, \$1.50 to \$2.50.



CALLA, LITTLE GEM.

Begonias, Tuberos.

Very popular plants for beds, or as pot plants for house or conservatory. The bulbs can be planted in small pots, in April or May, in good rich soil, and when well started transplant to larger pots. If wanted for garden or bedding, plant in a partial shade, and protect from winds and severe storms. Preserve bulbs in a warm dry cellar during winter.

In Separate Colors, single flowering; bright scarlet, deep crimson, pure white, rich pink, bright yellow and orange salmon. Each, 15c.; per doz., \$1.50.

All Colors Mixed. Per doz., \$1.20.

Double Varieties. Each, 40c.

CALLA ETHIOPICA.

(*Lily of the Nile.*)

Pure white, large flower. Each, 20 to 50c.

Little Gem, very dwarf, rarely exceeds 12 inches in height; flowers about half the size of the common variety. Each, 15c.

CALADIUMS, FANCY.

Handsome foliage plants, useful for summer and fall decorations. In varieties; each, 30c.

Caladium Esculentum.

(*Elephant's Ear.*)

Bulbous, ornamental large leaved plants, used for groups on lawns, requiring a moist rich soil. Each, 25c.; per doz., \$2.50. Smaller sizes, each, 15c.; per doz., \$1.50. Extra strong bulbs, each, 50c.

CAMELLIA JAPONICA.

In varieties; each, \$3 to \$5.

CANNAS.

Large Flowering Dwarf French, magnificent flowering plant of dwarf habit, about 4 feet in height, with luxuriant and richly colored foliage. Flowers of large size, ranging from all shades of yellow and orange to crimson and scarlet. Each, 10c.; per doz., \$1.

Madame Crozy, grows from 2 to 3 feet in height green foliage, flowers large, of a brilliant scarlet with a narrow yellow border. Each, 15c.



CALADIUMS FANCY LEAVED.

Alphonse Bouvier, flowers of a deep rich crimson. Each, 15c.

Florence Vaughan, flowers deep yellow, mottled rich crimson. Each, 15c.

Maurice Mussy, flowers a rich scarlet, of large size. Each, 15c.

Paul Marquant, flowers bright salmon, of large size. Each, 15c.

Kaiser Wilhelm, flowers bright red, very free blooming. Each, 15c.

Queen Charlotte, flowers of a brilliant orange scarlet, with a distinct golden belt round each flower. Each, 20c.

CARNATIONS.

Alaska, pure white.

Buttercup, yellow, large flowers.

Daybreak, a very delicate shade of pink, large full flowers, long stem, very fragrant.

F. Mangold, deep rich crimson.

Grace Wilder, pink; flowers large and free bloomer.

Lizzie McGowan, a splendid white variety, unsurpassed for size, form and constitution; free bloomer, long stems, very fragrant.

Louisa Porsch, yellow, a shade lighter than Buttercup, streaked with carmine.

Mme. Fisher, pure white.

Portia, brilliant scarlet.

Puritan, white, large, very full and of good substance.

Silver Spray, pure white, of good form, and fragrant.

American Flag, the best striped carnation.

Helen Keller, white, striped red.

Mme. Diaz Albertini, free blooming, delicate pink.

Thos. Cartledge, carmine pink.

Wm. Scott, a deep pink.

Each, 10c.; per doz., \$1.

CENTAUREA.

Gymnocarpa, downy, white foliage, useful for bedding, vases and baskets. Each, 10c.; per doz., \$1.

CHRYSANTHEMUMS.

From a large collection we enumerate a few of the best only.

Eda Prass, light salmon.

Golden Wedding, rich golden yellow.

Ivory, pure white, large and early.

L. Canning, pure white, large and early.

Lillian B. Bird, light pink, late.

Louis Boehmer, silvery pink, downy, incurved.

Marion Henderson, best early yellow.

Major Bonnaffon, yellow, of largest size.

Minnie Wanamaker, large, clear white.

Mrs. A. Hardy, white, downy, incurved.

Mrs. E. G. Hill, early, pink.

Mrs. J. G. Whilldin, handsome light yellow, very early.

Niveus, snow white.

The Queen, deep yellow, very large.

W. H. Lincoln, bright yellow, large, splendid flowers.

V. H. Hallock, light pink, large flowers.

Vivian-Morel, light rose, extra fine flowers.

Yellow Queen, bright chrome yellow.

Each, 10c.; per doz., \$1.

For new varieties see novelties.

CISSUS DISCOLOR.

A beautiful climber, with marked and crimson foliage. Each, 25c.

CLERODENDRON.

A beautiful greenhouse climber, with bright scarlet flowers and calyx creamy white. Very free flowering. Each, 25c.

COBÆA SCANDENS.

A rapid growing vine with large bell shaped flowers; will grow over 20 feet in one season. Each, 10c.; per doz., \$1.

Cocolaba Platyclada.

Fine for baskets. Each, 10c.

COLEUS.

Decorative foliage plants, valuable for vases, baskets and bedding out.

Buttercup, yellow, good for bedding.

Chicago Bedder, red.

Firebrand, a fine bedder, dark crimson.

Firecrest, bright crimson, with yellow edge.

Golden Verschaffeltii, fine yellow foliage.

Hero, dark maroon.

Kirkpatrick, light green, centre blotched white.

Nonesuch, crimson, edged yellow.

Queen Victoria, crimson, bright golden edge.

Verschaffeltii, dark crimson, best for bedding.

Vick's Gem, dark crimson, edged green, beautiful foliage.

Each, 10c.; per doz., \$1; 100, \$6.

CONVOLVULUS MAURITANICUS.

Blue flowering vine; for baskets and vases. Each, 10c.

CROTONS.

Beautiful ornamental foliage plants. In variety. Each, 25c.

CURCULIGO RECURVATA.

Palm like foliage. Each, 15 to 50c.
Variegated. Each, 15 to 50c.

CYPERUS ALTERNIFOLIUS.

(Umbrella Palm.)
Each, 10 to 25c.



CYCLAMEN.

CYCLAMEN PERSICUM GIGANTEUM.

Bulbous plants; succeeds well in the house, flowers of good substance, lasting a long time in bloom. Colors ranging from white to pink and crimson. Each, 25c.

DAHLIA.

Large Flowering Tall, in various colors.

Dwarf Bedding, large flowering; grow about 2 feet high in various colors.

DAISY.

White Paris (The True Marguerite), large, pure white flowers. Each, 10c.; per doz., \$1.

DRACÆNA.

Fragrans, leaves deep green. Each, 50c.

Indivisa, long foliage, green, graceful. Each, 25c.

Terminalis, leaves brownish green, with red variegations. Each, 25c.

ERANTHEMUM MARGINATUM.

Handsome foliage plant; green leaves margined with white, for baskets. Each, 10c.



DAVALLIA MOOREANA.

EUPATORIUM RIPARIUM.

White, Winter flowering. Each, 10c.

FERNS.

Very desirable plants for house or conservatory. Those offered below are among the best.

Adiantum (Maiden Hair). *Bellum*, a beautiful variety, with crested fronds about 4 inches long. Each, 15c.

Concinnum, light green, recurved. Each, 15c.

Cuneatum, the well known maiden hair. Each, 15c.

Farleyense, this is the handsomest of all the maiden hair varieties. Each, 50c.

Gracillimum, very graceful maiden hair. Each, 25c.

Davallia Mooreana, an elegant fern of rapid growth. Each, 25c.

Stricta, beautiful shade of green. Each, 25c.

Gymnogramma Sulphurea. Each, 15c.

Lastrea Aristata Variegata, this beautiful fern has a broad band of yellowish green running through the pinnules; very ornamental. Each, 25c.

Microlepia Cristata, beautiful decorative fern. Each, 25c.

Nephrolepis Davallioides Furcans, a beautiful crested variety with arching fronds. Each, 25c.

Duffii, producing numerous crested fronds. Each, 20c.

Exaltata (Sword Fern). Each, 15c.

Rufescens Tripinnatifida, graceful arching fronds. Each 50c.

Polypodium Aureum, large foliage of a distinct bluish color. Each, 25c.

Platycerium Alcorne (Stag's Horn Fern), thriving best on a block of wood. Each, 50c.

Grande. Each, \$5.

Pteris Argyrea, large foliage, with a broad band of white through the centre. Each, 15c.

Serrulata, useful for baskets. Each, 15c.

Victoria, green fronds with beautiful silvery white variegation. Each, 15c.

Alsophila Australis, Australian tree fern, a rapid growing species. Each, 15 to 50c.

Cyrtomium Falcatum, a most desirable fern for house culture; of deep green foliage. Each, 15c.

Pteris Palmata, deep green foliage. Each, 15c. Owrardi. Each, 15c.

FEVERFEW.

Little Gem, dwarf; flowers white, large and perfect form; double. Each, 10c.

FICUS ELASTICA.

(*India Rubber Plant*.)

Each, 85 cents.

Ficus Repens, a trailing variety with small foliage. Each, 15c.

Parcelli, beautiful variegated leaves. Each, \$1.

Fittonia Verschaffeltii, leaves dark green, veined dark red. Each, 25c.

FUCHSIAS.

Double Varieties.

Abbe Garnier, corolla lilac; sepals scarlet.

Elm City, corolla purple; sepals scarlet.

Joseph Bozain, dark plum color.

Molesworth, corolla white; sepals crimson, a fine variety.

Perle Von Brunn, flowers large; corolla pure white; sepals dark red; free flowering.

Snowstorm, white corolla; sepals crimson.

Storm King, corolla pure white; large and free flowering.

Each, 10c.; per doz., \$1.

Single Varieties.

Acrosta, pale lavender.

Black Prince, corolla and sepals carmine; free flowering.

Bulgaria, corolla violet; sepals crimson.

Chas. Blanc, corolla deep rose; sepals white.

Falcon de Neige, tube and sepals red; corolla white.

Jupiter, corolla purple; large flowering.



FUCHSIA.

Rose of Castile, corolla violet; sepals white; a very free flowerer.

Speciosa, corolla orange scarlet; sepals white.

Each, 10c.; per doz., \$1.

Genista Canariensis.

Flowers golden; blooming profusely. Each, 10 to 25c.

GERANIUMS.

Double Varieties.

Anna Hoste, dark maroon scarlet.

B. K. Bliss, rich scarlet; large truss.

Beaute Poitevine, salmon.

Dr. Clenet, brilliant capucine scarlet; good habit.

Earl Granville, dark pink; fine.

Erl King, bright red.

Gen. Grant, orange scarlet.

Goldfinder, nearest to yellow.

M. Louis Fages, orange scarlet; semi-double.

Montesquii, rosy mauve.

Rosea Superba, rose, very double.

Salamander, deep pink.

Swanley-white.

Thca, blush white; centre a bright salmon.

Wm. Kelway, fiery scarlet.

Each, 10c.; per doz., \$1. Bedding varieties, \$7 per 100.

Single Varieties.

Acton, brilliant scarlet.

Bridesmaid, blush, centre bright pink.

Daybreak, delicate pink.

Gen. Grant, scarlet; good bedder.

John Bright, deep red.

Lady Reed, light salmon.

M. A. Mame, vermilion; large, good habit.

M. de Layre, white.

Meteor, dark scarlet.

Mrs. Gordon, beautiful pink.

Queen of Belgium, white.

Queen Olga, pink; large flower.

Sam Sloan, deep scarlet; good bedder.

Souvenir de Mirande, white, streaked with rosy carmine.

Van Dael, light salmon; very good.

Each, 10c.; per doz., \$1. Bedding varieties, \$7 per 100.

Golden and Bronze Geraniums.

Cloth of Gold, leaves golden.

Happy Thought, green; centre of leaf white.

Marshal McMahan, deep yellow, with broad chocolate zone.

Mrs. Pollock, margin golden; dark zone.

Each, 10c.

Silver Leaved Geraniums.

Mme. Salleroi, leaves green, edged white; dwarf, good for ribbon beds or borders. Each, 10c.; per 100, \$6.

Mountain of Snow, green leaf with silver edge.

Each, 10c.; per doz., \$1.

Scented Geraniums.

Apple Scented, Dr. Livingston, Rose Variegated, Pennyroyal Little Pet, Skeleton Leaved, Citron, Rose, Nutmeg, Prince Albert, Shrubland Pet, Mrs. Taylor. Each, 10c.

Double Flowering Ivy Geraniums.

Good house plants, or for baskets or vases; they can be grown to droop or climb.

Anna Pfitzer, double salmon pink.

Eden Marchii, beautiful salmon pink.

Horace Choiseul, rich cherry pink.

Jeanne D'Arch, pure white; free flowering.

M. Dubois, rose pink.

Raphael, salmon pink.

Souvenir de Chas. Turner, large trusses; deep pink.

Each, 10c.; set of seven varieties for 50c.

GLADIOUS.

Various shades of Light and White.	Per doz.,	50 cts.
“ “ Pink	“ “	35 “
“ “ Red and Scarlet..	“ “	20 “
“ “ Yellow	“ “	50 “
“ “ Variegated	“ “	35 “

GLECHOMA HEDERACEA VAR.

Useful for hanging baskets. Each, 10c.

GLOXINIA.

Bulbous. Handsome pot plants, Summer blooming; flowers 2 inches long by 2 inches in diameter. Colors: Crimson, Rose, Scarlet, White, etc., and many beautifully speckled. Grow in light rich soil and protect from the sun. Mixed colors, each, 25c.; per doz., \$2.50.

GREVILLEA ROBUSTA.

(*Silk Oak.*)

Fine decorative plant. Each, 25c.

HELIOTROPE.

Chieftain, purple.

Peruvianum, light purple.

Snow Wreath, white.

Each, 10c.; per doz., \$1.

HOLLYHOCK, DOUBLE.

Charter's white, rose, yellow, salmon, black and scarlet. Each, 15c.; per doz., \$1.50.

HOYA CARNOSA.

(*Wax Plant.*)

Each, 15c.

HYDRANGEA.

Hortensis, the well known variety; pink flowers, changing to blue in soils containing iron. Each, 15 to 50c.

Otaksa, rosy carmine flowers; flowering when quite small. Each, 15 to 50c.

Thomas Hogg, dwarf grower; white flowers. Each, 15 to 50c.

IMANTOPHYLLUM MINIATUM.

Attractive greenhouse plant; flower of a bright orange color. Each, 50c.

IPOMŒA GRANDIFLORA.

(*Moonflower.*)

Flowers white. Each, 10c.

IPOMŒA LEARII.

(*Dawn Flower.*)

Flowers purple. Each, 10c.

IVY.

English. Each, 10c.

German, of rapid growth; useful for hanging baskets. Each, 10c.

JASMINUM GRANDIFLORUM.

Climbing plant; pure white, very fragrant. Each, 25c.

LANTANA.

One of the best Summer flowering plants: Adolph Tvas, Raphael, Snowball, California, Splendens, Magnum, Victoria. Each, 10c.; per doz., 85c.

LEMON VERBENA.

Each, 10c.

LINUM TRIGYNUM.

An early Winter flowering plant, producing in profusion, brilliant orange flowers. Each, 15 to 25c.

LOBELIA.

For hanging baskets or ribbon beds. Colors, blue and white. Each, 10c.

LYCOPODIUM OR SELAGINELLA.

Plants half way between the ferns and mosses, are suitable for filling jardinières. Six distinct varieties; each, 15c.

MADEIRA OR MIGNONETTE VINE.

A very rapid running vine, excellent for covering outhouses or trellises; small, feathery like, fragrant flowers in the Fall. Dry roots, each, 6c.; roots started in pots, each, 10c.

MAHERNIA ODORATA.

Flowers yellow, bell shaped, sweet scented; flowering in Winter. Each, 10c.

MANETTIA BICOLOR.

A very pretty, rapid growing, twining plant, producing tubular flowers over an inch in length, the plant covered with them during the entire season. Color bright red, tipped with yellow; 6 to 8 feet. Each, 10c.



IPOMŒA LEARII.

MANETTIA CORDIFOLIA.

Showy and attractive Summer vine, and entirely distinct from the preceding one: of rapid growth, producing a profusion of scarlet crimson tubular flowers, 1½ inches long. Each, 10c.

MARANTA ZEBRINA.

Beautiful foliage plant, leaves light green, barred with purple. Each, 50c to \$1.

MAURANDYA.

Graceful and free flowering climber; white and blue flowers, 8 feet. Each, 10c.

MOONFLOWERS.

(See Ipomœa.)

MUSA CAVENDISHII.

(Dwarf Banana.)

Each, 75c. to \$1.

MYRSIPHYLLUM ASPARAGOIDES.

(Smilax.)

A well known vine, easily grown if trained to strings or stakes. Each, 10c.; per doz., \$1.

ORANGE OTAHEITE.

The best of the oranges for house culture; dwarf, bushy habit; blooms freely when quite small. Each, 40c.

Orange Mandarin, dwarf; bushy habit and heavy bearer. Each, 50c. to \$2.

ORCHIDS.

We shall be pleased to furnish prices on special lists, when desired, from our extensive collection. We will supply good flowering plants, our selection, at the following prices: 6 orchids in 6 varieties, \$4.50; 12 orchids in 12 varieties, \$9.

PALMS.

Valuable plants for house or conservatory; indispensable for decorating purposes.

Areca Lutescens, green glossy foliage, with golden yellow stems. Each, 50c. to \$10.



KENTIA BELMOREANA.

Kentia Belmoreana, strong growing, with deep green foliage. Each, 50c. to \$10.

Chamærops Excelsa, a handsome fan palm. Each, 50c. to \$2.

Kentia Forsteriana, beautiful palm, graceful, bright green foliage. Each, 50c. to \$10.

Latania Borbonica, Chinese fan palm, the most desirable for general cultivation. Each, 50c. to \$15.

Livistona Rotundifolia, beautiful dwarf form of *Latania Borbonica*; one of the prettiest small palms in cultivation. Each, 50c.

Phœnix Rupicola. Each, \$3.

Rhapis Flabelliformis. Each, 50c. to \$1.50.

Seaforthia Elegans, of graceful habit and rapid and easy growth. Each, 25c. to \$5.

Cycas Revoluta (Sago Palm). Each, \$3.

PANDANUS UTILIS.

(Screw Pine.)

Very ornamental foliage plant for indoor or outdoor decoration. Each, 50c.

Pandanus Veitchii, leaves striped with broad bands of creamy white. Each, \$1.

PASSIFLORA.

(Passion Vine.)

Cœrulea, blue. Each, 30c.

Constance Elliot, white. Each, 30c.

PELARGONIUMS, SHOW.

The Pelargonium is one of the most beautiful plants and should be more extensively grown; they are of easy culture, and in their various exquisite tints and colors, present what few other plants possess.

Champion, blush rose, blotched maroon.

Conductor, crimson, with maroon blotches.

Cornet, rose, with maroon blotches.

Dutchess of Fife, well filled flowers, of a clear lake shade, pure white margins and centre.

Dr. Masters, dark maroon, margined crimson.

General Taylor, deep rose, blotched maroon.

L'Avenir, rose, streaked with white.

Lucy Morton, white, with purple blotches.

Mabel, bright rose, blotched blackest maroon.

Maggie, white, with distinct dark purple spots on each petal.

Othello, very dark maroon.

Queen of Whites, with dark purple blotches.

The Bride, white, blotched dark maroon.

Victor, deep rose, blotched dark maroon.

F. Hienel, Gambetta, Defiance, Nun, Dr. Andre, Gold Medal, Lady of the Lake, Mrs. Harrison.

Each, 20c.; six for \$1.

PEPEROMIA PELTATA.

Dwarf growing, ornamental foliage plant for the window, thick fleshy leaves of green color, veined with silvery white. Each, 25c.

PETUNIAS, DOUBLED FRINGED.

Alience, white, lilac centre.

Eglantine, clear white, splashed purple.

Ivan, bright carmine pink, edged silvery white.

Lillian, white, with purple centre.

Talisman, white centre, mottled crimson, very full and double.

Enchantment, soft rosy carmine.

Eureka, a rich deep purple, splashed with white.

Yolanthe, pure white, splashed rosy carmine.

Juno, bright rosy carmine, mottled white.

Picco, crimson, edged with white.

Stella, white, marked with rosy crimson.

Mrs. Morton, white.

Each, 15c.; 6 for 75c.

PILOGYNE SUAVIS.

(Parlor Ivy.)

Each, 15c.

PITTOSPORUM VAR.

Bushy growing plant, bright green, variegated with white. Each, 25c.

PLUMBAGO CAPENSIS.

Light blue, very free flowering.

Alba, same as above except in color, which is white. Each, 20c.

PRIMROSE—Chinese.

Single. Each, 10 and 25c.

Double. Each, 15 and 25c.

Primrose, Mexican.

A trailing plant, well adapted for planting in vases and hanging baskets, flowering profusely the year round.

Apple-Blossom, white, tinted blush.

Charming, deep pink, veined with scarlet.

Hermosa, crimson.

Rosa Oculata, deep rose with yellow centre.

Each, 10c.

PHRYNIUM VARIEGATUM.

Foliage beautifully marked white on dark green ground. It is a strong free grower, somewhat like a canna. It is of easy culture and will grow and make fine plants for the house. Each, 35 and 50c.

ROSES.—Tea or Ever-blooming.

Bon Silene, bright brilliant carmine.

Catherine Mermet, delicate rosy pink; buds large, long and pointed.

Duchesse De Brabant, soft rosy flesh tint; good bedding variety.

Mme. Cusin, shell pink, shaded cream.

Mme. Hoste, creamy white.

P. Gontier, dark carmine crimson; good bedder.

Perle des Jardins, rich yellow; of large size and perfect form.

Safrano, saffron yellow; beautiful in the bud.

Souvenir d'Un Ami, fine delicate rose, full and double.

Sunset, of a rich shade of saffron and orange.

The Bride, pure white; long buds, full and double.

The Bridesmaid, of a richer and darker shade than Catherine Mermet.

The Queen, a pure white sport of *Souv. d'Un Ami*. And other varieties.

Small plants, each, 10c.; per doz., \$1. Good size, each, 20c.; per doz., \$2.

Roses, Hybrid Tea.

American Beauty, rich carmine crimson. Each, 15c.

Kaiserin Augusta Victoria, new, of a large size, creamy white, strong grower. Each, 15c.

La France, beautiful peach pink, changing to deep rose. Each, 10c.

Mme. C. Testout, new; clear satin rose, flowers full, of globular form. Each, 15c.

Meteor, dark velvety crimson, a constant profuse bloomer. Each, 10c.

Souvenir de Wootton, beautiful shade of crimson, very fragrant, a most prolific bloomer. Each, 10c.

Polyantha Roses.

Anna Marie Montravel, white.

Clothilde Soupert. The best of this class; fine for pot or outdoor planting. Color pearly white, with centre of soft pink.

George Pernet. Pink, shaded copper.

olden Fairy. Golden color, dwarf.

Little Dot. Delicate pink.

Little Gem. White.

Mignonette. Dark pink.

Miniature. Light pink, changing to white.

Mme. Cecil Brunner. Delicate rose color.

Paquerette. Pure white.

Perle d'Or. Yellow, tinged copper.

Each, 10c.

Hybrid Perpetual Roses, Hardy.

In this list are offered some of the best of this class.

Anna De Diesbach. Clear, bright carmine, full and fragrant.

Baroness Rothschild. Rich satiny pink.

Baron de Bonstetten. Dark red, very large.

Captain Christy. Deep flesh color; strong grower.

Dinsmore. Rich crimson.



POLYANTHA ROSE.

Fisher Holmes. Rich velvety crimson, large.

Gen. Jacqueminot. Brilliant scarlet crimson.

Gloire de Margottin. Dazzling scarlet.

John Hopper. Bright rose, carmine centre, large.

Magna Charta. Bright pink.

Paul Neyron. Very large dark rose.

Ulrich Brunner. Bright cerise red; flowers large and full. 2 year old plants, 35c. each; \$3 50 per doz.

Crimson Rambler Rose.

A new hardy Japanese Climbing Rose. It is of rapid vigorous growth; flowers are produced in trusses; color, a growing crimson; very free flowering. Large plants, 40c. each; small size, 15c. each.

RHYNCOSPERMUM JASMIN-IOIDES.

Glossy evergreen foliage, producing pure white Jasmine-like flowers, in profusion, very fragrant; blooming in May or June. 35c. each

SALVIA SPLENDENS.*(Scarlet Sage.)*

Patens. Deep blue. 10c. each; \$1 per doz.

SANSEVIERA ZEYLANICA.

An elegant variegated plant well adapted for house culture. 30c. each.

SWAINSONA GALEGIFOLIA ALBA.

Ever blooming plant, with pure white pea shaped flowers, producing sprays from 12 to 30 flowers each. 10c.

TUBEROSES.

Excelsior Pearl. Extra large bulbs. 5c. each; 35c. per doz.

VERBENAS.

Of these useful bedding plants, we offer 12 distinct varieties. They are all of the large flowering type; the colors range through all the different shades of scarlet, purple, crimson, pink, blue and white. 8c. each; 75c. per doz.; \$6 per 100.

VINCA, Periwinkle.

Very good for vases.

Major. Green leaves.

" variegata. Leaves green, margined white; blue flowers. 10c. each; \$1 per doz.

VIOLET.

English. Single blue.

Marie Louise. Double light purple.

Swanley White. Double white.

California. A large new single purple variety; fragrant. Small plants 10c. each; \$1 per doz.; large plants in autumn, 20c. each.

HERBACEOUS PERENNIALS, Hardy.**Achillea Ptarmica Fl. Pl.**, 18 in.; double pure white flower. 15c. each.**Aconitum Napellus**, 3½ feet; flowers dark blue. 15c. each.**Anemone Japonica**, 15c. each; \$1 per doz." **Alba**, 15c. each; \$1 per doz.**Aquilegia**, (Columbine) assorted 10c. each; \$1 per doz.**Astilbe Japonica**, white; plume like spikes of flowers. 20c. each.**Arabis Alpina**, suitable for rockwork. 10c. each.**Bellis Perennis** (English Daisy), various colors. 10c. each; \$1 per doz.**Canterbury Bells**, various colors. 10c. each; \$1 per doz.**Cedronella Cana**, (Balm of Gilead.) 10c. each.**Cerastium Tomentosum**, bright silvery foliage; white flowers. 10c. each.**Digitalis Purpurea**, (Foxglove.) 10c. each.**Chamomile**, (True.) 10c. each; \$1 per doz.**Myosotis**, (Forget-me-not), 2 varieties. 10c. each.**Primula Vulgaris**, (English Primrose), bright yellow. 10c. each.**Vinca Minor**, (Periwinkle). 10c. each.**Delphinium Hybridum**, assorted. 20c. each; \$2 per doz.**Funkia Subcordata**, (White Day Lily), flowers pure white. 25c. each.**Funkia Undulata Variegata**, flowers blue; foliage variegated with white. 25c. each.**Hemerocallis Flava**, orange yellow flowers. 20c. each.**Iris Germanica**, (Fleur de Lis), assorted. 10c. each; \$1 per doz.**Iris Kämpferi**, assorted. 20c. each; \$2 per doz.**Pæonia**, (Pæony). Herbaceous, assorted. 30c. each; \$3 per doz.**Papaver**, (Poppy.) **Nudicale**, (Iceland Poppy). 10c. ea. h.**Bracteatum**, large flower, deep crimson. 10c. each.**Orientele**, flowers orange scarlet. 10c. each.**Phlox Subulata**, (Moss Pink). 10c. each; \$1 per doz.**Hybrida**, assorted, early and late flowering. 15c. each; \$1.50 per doz.**Pyrethrum Hybridum**, assorted. 25c. each.**Spiræa Filipendula Fl. Pl.**, (Double Dropwort). 20c. each.**Palmata**, large heads of crimson flowers. 20c. each.**Ulmaria Fl. Pl.**, (Double Meadow Sweet) double white flowers. 20c. each.**Lilium Auratum**, (Golden Banded Lily of Japan). 20c.**Lancifolium Album**, 30c. each." **Rubrum**, 20c. each.**HARDY SHRUBS.****Berberis Thunbergii**, handsome foliage, and solitary flowers; low growing, one of the best shrubs. 35c. each.**Vulgaris**, upright bush, and fragrant flowers, fruit deep red. 25c. each.**Vulgaris, Var. Purpurea**, purple leaved, 30c. each.**Chionanthus Virginica**, (Fringe Tree) foliage, dark green, glossy and pure white feathery flowers. 75c. each.**Cornus Florida**, White Flowering Dogwood. 50c. each.**Exochorda Grandiflora**, pure white starry flowers. 50c. each.**Hydrangea Paniculata Grandiflora**, flowering in August and September. 25, 50 and 75c. each.**Lonicera Tartarica**, (Bush Honeysuckle,) white and pink varieties. 35c. each.**Philadelphus**, (Syringa or Mock Orange), **Coronarius**, pure white flower, fragrant. 35c. each.**Gordonianus**, flowers large, white, and produced late. 35c. each.**Spiræa**, (Meadow Sweet), **Prunifolia Fl. Pl.**, (Bridal Wreath) double pure white flowers on the entire length of the smaller twigs. 25c. each.**Opulifolia Aurea**, splendid golden leaved variety. 35c. each.**Van Houttei**, foliage rich glossy green; flowers pure white, in dense clusters along the whole length of the branches; one of the finest ornamental shrubs. 25c. each.**Symphoricarpus Racemosus**, (Snowberry). 35c. each.**Syringa**, (Lilac) **Vulgaris**, (common lilac) fragrant purple flowers, in large clusters; one of the best. 25c. each.**Vulgaris Alba**, (common white lilac). 35c. each.**Viburnum Plicatum**, (Japan Snowball), very ornamental shrub, with olive green plicated foliage; flowers white. 75c. to \$1 each.**HEDGE PLANTS, EVERGREENS.**

1½ to 2 feet, \$2.00 per dozen. 2 to 3 feet, \$3.50 per dozen.

Norway Spruce. 1½ to 2 feet.**CLIMBING PLANTS.****Ampelopsis Veitchii**, Boston Ivy or Japan Ivy. 35c.**Quinquefolia**, common Woodbine or Virginia Creeper. 25c. each.**Quinquefolia Englemanni**, Engleman's Woodbine. 35c. each.**Clematis Jackmanii**, large purple flowers. 75c. each.**Henryii**, large white flowers. 75c. each.**Lucie Lemoine**, large double white. 75c. each.**Paniculata**, strong rapid grower; flowers white and fragrant. 25c. each.**Lonicera Belgica**, Monthly Fragrant Honeysuckle. 35c.**FRESH FLOWERS,**

Floral and Funeral Designs a Specialty and executed at short notice.

All orders by mail or telegraph promptly attended to.

