

# AIRCRAFT ACTION REPORT

RESTRICTED  
 (Reclassify when  
 filled out)

## I. GENERAL

CONFIDENTIAL

(a) Unit Reporting VO-94 (b) Based on or at USS SHANROCK BAY (OVERSEA) (c) Report No. 68  
 (d) Take off: Date 5/21/45 Time (LZT) 1515 I (Zone); Lat. 25-04 N. Long. 128-07 E.  
 (e) Mission Direct support, Okinawa (f) Time of Return 1845 I (Zone)

## II. OWN AIRCRAFT OFFICIALLY COVERED BY THIS REPORT.

TYPE (a)	SQUADRON (b)	NUMBER			BOMBS AND TORPEDOES CARRIED (PER PLANE) (f)	FUZE, SETTING (g)
		TAKING OFF (c)	ENGAGING ENEMY A/C (d)	ATTACKING TARGET (e)		
<b>ZNL-3</b>	<b>VO-94</b>	<b>4</b>		<b>4</b>	<b>10x100 G.p. - AN-M 30 8 AR - Mk 7x3.5" M 5" H</b>	<b>Mk 219 nose - instant., AN-M 101 A2 tail-.025 delay. Mk 146 base- impact.</b>

## III. OTHER U. S. OR ALLIED AIRCRAFT EMPLOYED IN THIS OPERATION.

TYPE	SQUADRON	NUMBER	BASE	TYPE	SQUADRON	NUMBER	BASE
<b>ZNL-3</b>	<b>VO-9</b>	<b>4</b>	<b>NATONA BAY</b>				
"	<b>VO-93</b>	<b>4</b>	<b>PETROF BAY</b>				
"	<b>VOG-2</b>	<b>3</b>	<b>FANSHAW BAY</b>				

## IV. ENEMY AIRCRAFT OBSERVED OR ENGAGED (By Own Aircraft Listed in II Only).

(a) TYPE	(b) NO OBSERVED	(c) NO ENGAGING OWN A/C	(d) TIME ENCOUNTERED	(e) LOCATION OF ENCOUNTER	(f) BOMBS, TORPEDOES CARRIED; GUNS OBSERVED	(g) CAMOUFLAGE AND MARKING
			(ZONE)			
			(ZONE)			
			(ZONE)			

(h) Apparent Enemy Mission(s) \_\_\_\_\_  
 Did Any Part of \_\_\_\_\_  
 (i) Encounter(s) Occur in Clouds? \_\_\_\_\_ If so, Describe Clouds \_\_\_\_\_  
(YES OR NO) (BASE IN FEET, TYPE AND TENTHS OF COVER)  
 Time of Day and Brilliance \_\_\_\_\_  
 (j) of Sun or Moon \_\_\_\_\_ (k) Visibility \_\_\_\_\_  
(NIGHT, BRIGHT MOON; DAY, OVERCAST; ETC.) (MILES)

## V. ENEMY AIRCRAFT DESTROYED OR DAMAGED IN AIR (By Own Aircraft Listed in II Only).

(a) TYPE ENEMY A/C	(b) DESTROYED OR DAMAGED BY:			GUNS USED	(c) WHERE HIT, ANGLE	(d) DAMAGE CLAIMED
	TYPE A/C	SQUADRON	PILOT OR GUNNER			



# AIRCRAFT ACTION REPORT

RESTRICTED  
(Reclassify when filled out)

CONFIDENTIAL  
REPORT No. 65

## VI. LOSS OR DAMAGE, COMBAT OR OPERATIONAL, OF OWN AIRCRAFT (of those listed in II only).

(a) TYPE OWN A/C	(b) SQUADRON	(c) CAUSE: TYPE ENEMY A/C, TYPE GUN, OR OPERATIONAL CAUSE	(d) WHERE HIT, ANGLE (List armor, self-sealing tanks, equipment hit)	(e) EXTENT OF LOSS OR DAMAGE, (Give Bureau serial number of planes destroyed)
1				
2				
3				
4				
5				
6				
7				
8				
9				
10				
11				
12				
13				
14				

## VII. PERSONNEL CASUALTIES (in aircraft listed in II only; identify with planes listed in VI by Nos. at left).

(a) NO.	(b) SQUADRON	(c) NAME, RANK OR RATING	(d) CAUSE	(e) CONDITION OR STATUS

## VIII. RANGE, FUEL, AND AMMUNITION DATA FOR PLANES RETURNING

(a) TYPE A/C	(b) MILES OUT	(c) MILES RETURN	(d) AV. HOURS IN AIR	(e) AV. FUEL LOADED	(f) AV. FUEL CONSUMED	(g) TOTAL AMMUNITION EXPENDED				(h) NO. OF PLANES RETURNING
						.30	.50	20MM	MM	
<b>F4U-3</b>	<b>85</b>	<b>85</b>	<b>3.5</b>	<b>330</b>	<b>230</b>		<b>1000</b>			<b>4</b>

## IX. ENEMY ANTI-AIRCRAFT ENCOUNTERED (Check one block on each line).

CALIBER	NONE	MEAGER	MODERATE	INTENSE
HEAVY — Time-fused shells, 75mm and over	<b>X</b>			
MEDIUM — Impact-fused shells, 20mm-50mm	<b>X</b>			
LIGHT — Machine gun bullets, 6.5mm-13.2mm	<b>X</b>			

## X. COMPARATIVE PERFORMANCE, OWN AND ENEMY AIRCRAFT (use check list at left).

- SPEED, CLIMB,  
at various altitudes
- TURNES
- DIVES
- CEILINGS
- RANGE
- PROTECTION
- ARMAMENT



# AIRCRAFT ACTION REPORT

(OMIT THIS SHEET IF NO ATTACK WAS MADE)

RESTRICTED  
(Reclassify when filled out)

**CONFIDENTIAL**

68

REPORT No. \_\_\_\_\_

## XI. ATTACK ON ENEMY SHIPS OR GROUND OBJECTIVES (By Own Aircraft Listed in II Only).

(a) Target(s) and Location(s) Artillery positions, Okinawa (b) Time Over Target(s) 1715-1745 I (Zone)  
(FOR SHIPS INCLUDE ALL IN AREA UNDER ATTACK)

(c) Clouds Over Target Unlimited  
(BASE IN FEET, TYPE AND TENTHS OF COVER)

(d) Visibility of Target Easy (e) Visibility 5  
(CLEAR, HAZY, PARTIALLY OBSCURED BY CLOUDS, ETC.) (MILES)

(f) Bombing Tactics: Type Glide Bomb Sight Used \_\_\_\_\_  
(LEVEL, GLIDE OR DIVE) (TYPE)

Bombs Dropped per Run 2 - 2 - 6 Spacing 30 Altitude of Bomb Release 2200  
(NUMBER) (FEET) (FEET)

**AR: 4 @ 2 each run, glide angle 30°, slant range 1500 yds.**

(g) Number of Enemy Aircraft Hit on Ground: Destroyed \_\_\_\_\_ Probably Destroyed \_\_\_\_\_ Damaged \_\_\_\_\_

(h) AIMING POINT	(i) DIMENSIONS OR TONNAGE	(j) NO A/C ATTACKING (k) SQUADRON	(l) BOMBS AND AMMUNITION EXPENDED, EACH AIMING POINT	(m) NO HITS On Aiming Point	(n) DAMAGE (None, slight, serious, destroyed or sunk)
1 <b>Artillery positions</b>	<b>In area 500x 200 yds.</b>	<b>4 VS-94</b>	<b>40x100 lb. g.p., 32 AR, 1000 rds. .50 cal.</b>	<b>50% in area</b>	<b>Not observed</b>
2					
3					
4					
5					
6					
7					
8					

(o) RESULTS: (For all hits claimed on ship targets and for land targets of special interest, draw diagram, top or side view or both, as appropriate, showing type and location of hits. For all targets give location and effect of hits, and identify by numbers above. Use additional sheets if necessary).

(p) Were Photographs Taken? No Photographs of Damage, When Taken, Should Be Attached By Staple.



# AIRCRAFT ACTION REPORT

RESTRICTED  
(Reclassify when  
filled out)

**CONFIDENTIAL**

REPORT No. 66

**XII. TACTICAL AND OPERATIONAL DATA.** (Narrative and comment. Describe action fully and comment freely, following applicable items in check list at left. Use additional sheets if necessary.)

## ENGAGEMENT WITH ENEMY

### OWN AIRCRAFT

Disposition  
Altitudes  
Speeds  
Approach Tactics  
Use of Cover, Deception  
Angles of Attack and  
Their Effectiveness  
Distance of Opening Fire  
Defense Tactics and  
Their Effectiveness

### ENEMY AIRCRAFT

Method of Locating, Distance  
Disposition  
Altitudes  
Speeds  
Approach Tactics  
Use of Cover, Deception  
Angles of Attack  
Distance of Opening Fire  
Defensive Tactics

### COMMENTS AND RECOMMENDATIONS

Own Weaknesses  
Enemy Weaknesses  
Offensive Tactics, Own  
" " , Enemy  
Defensive Tactics, Own  
" " , Enemy  
Flexible Gunnery, Own  
Escort Tactics  
Fighter Direction  
Use of Radar  
Night Fighting  
Recognition, Aircraft

## ATTACK

### OWN TACTICS

Method of Locating Target  
Approach to Target  
Altitudes, Speeds  
Approach  
Dive  
Pull-Out  
Dive Angle  
Strafing  
Retirement  
Defensive Tactics  
Use of Jamming

### DEFENSE, ENEMY

Evasive Tactics, Ships  
Concealment  
Searchlights  
Night Fighter Tactics  
Use of Jamming

### COMMENTS AND RECOMMENDATIONS

Bombing Tactics  
Torpedo Tactics  
Effectiveness of  
Bombs, Torpedoes  
Selection of Targets  
Fuzing  
Strafing Tactics  
Defensive Tactics  
Use of Radar  
Reconnaissance  
Photography  
Briefing

## OPERATIONAL

Navigation  
Homing  
Rendezvous  
Recognition, Ships  
Communications  
Flight Operations  
Search and Tracking  
Base Operations  
Maintenance

At 1715 I 11 May a group of 15 TBM-3's - 4 each from the SHAMROCK BAY, NATOMA BAY, and PETHOF BAY and 3 each from the FANSHAW BAY and MAKIN ISLAND - provided direct support over Okinawa. The SHAMROCK and MAKIN planes attacked artillery positions in an area 800x200 yds. on southern Okinawa. Our planes made 3 glide bombing runs and 2 AR strafing attacks, expending 40x100 lb. g.p.'s, 32 AR, and 1000 rds. of .50 cal. ammo on the target. 80% of this is estimated to have hit the target area.



# AIRCRAFT ACTION REPORT

RESTRICTED  
(Reclassify when  
filled out)

**CONFIDENTIAL**  
REPORT No. 68

**XIII. MATERIAL DATA.** (Comment freely on performance or suitability, following check list at left.  
Use additional sheets if necessary).

## ARMAMENT

Guns, Gunsights  
Turrets  
Ammunition  
Bombs, Torpedoes  
Bomb Sights  
Bomb Releases

## COMMUNICATIONS

Radio, Radar  
Homing Devices  
Visual Signals  
Codes, Ciphers

## RECOGNITION

IFF  
Signals  
Battle Lights  
Procedures

## PROTECTION

Armor; Points and Angles  
of Fire Needing Further  
Protection  
Leak Proofing

## EMERGENCY EQUIPMENT

Parachutes  
Life Belts, Life Rafts  
Safety Belts  
Emergency Kits  
Rations, First Aid

## NAVIGATIONAL EQUIPMENT

Compasses  
Driftsights  
Octants  
Automatic Pilots  
Charts  
Field Lighting

## INSTRUMENTS

Flight  
Power Plant

## OXYGEN SYSTEM

## CAMOUFLAGE AND DECEPTION DEVICES

## STRUCTURE

Airframe  
Control Surfaces  
Control System  
Dive Flaps  
Landing Gear  
Heating System  
Flight Characteristics  
At Various Loadings

## POWER PLANT

Engines  
Engine Accessories  
Propellers  
Lubricating System  
Starters  
Exhaust Dampers

## HYDRAULIC SYSTEM

## ELECTRICAL SYSTEM

Auxiliary Plant  
Lights

## FUEL SYSTEM

## FLIGHT CLOTHING

## MAINTENANCE

## BASE FACILITIES

Plane Servicing Equipment  
Personnel Facilities

REPORT PREPARED BY:

APPROVED BY:

**Grant W. KELLNER, Lieut., USNR,**

SIGNATURE

RANK AND DUTY

**A.S.I. Officer.**

**L. E. TERRY, Lieut., USNR,**

SIGNATURE

RANK AND DUTY

**Acting Commanding Officer.**

**5/12/45**

DATE





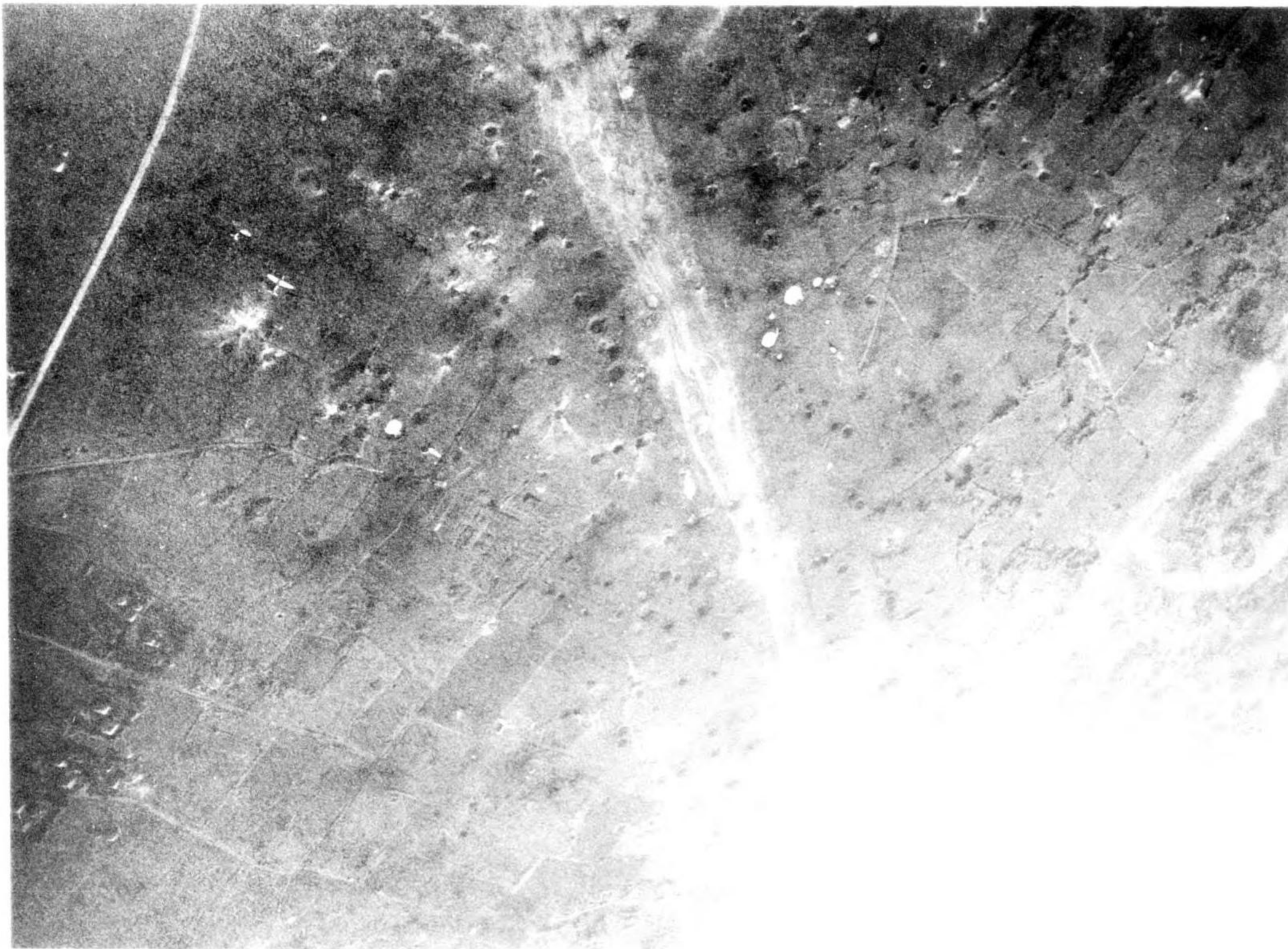
-1-  
VC-96 #69  
Bomb hits on  
runway at Nobaru  
Airfield, Miyako  
7 June 1945.



-2-  
VC-96 #69  
Hits registered on  
barracks area, Nobaru  
Airfield, Miyako.  
7 June 1945.

ENCLOSURE B.





-3-  
VC-96 #70  
Showing damage to  
N-S runway at Nobaru  
Airfield, Miyako.  
7 June 1945.



-4-  
VC-96 #70  
Bomb hits on dispersal  
area at Nobaru Air-  
field, Miyako.  
Hirara Airfield  
lies to northeast of  
Nobaru Field.





-5-  
VC-96 #74  
Bomb hit on mortar  
positions in TA 7861  
on southern Okinawa.

Shows the heavily  
defended Aeju-Dake  
escarpment in back-  
ground.

8 June 1945.



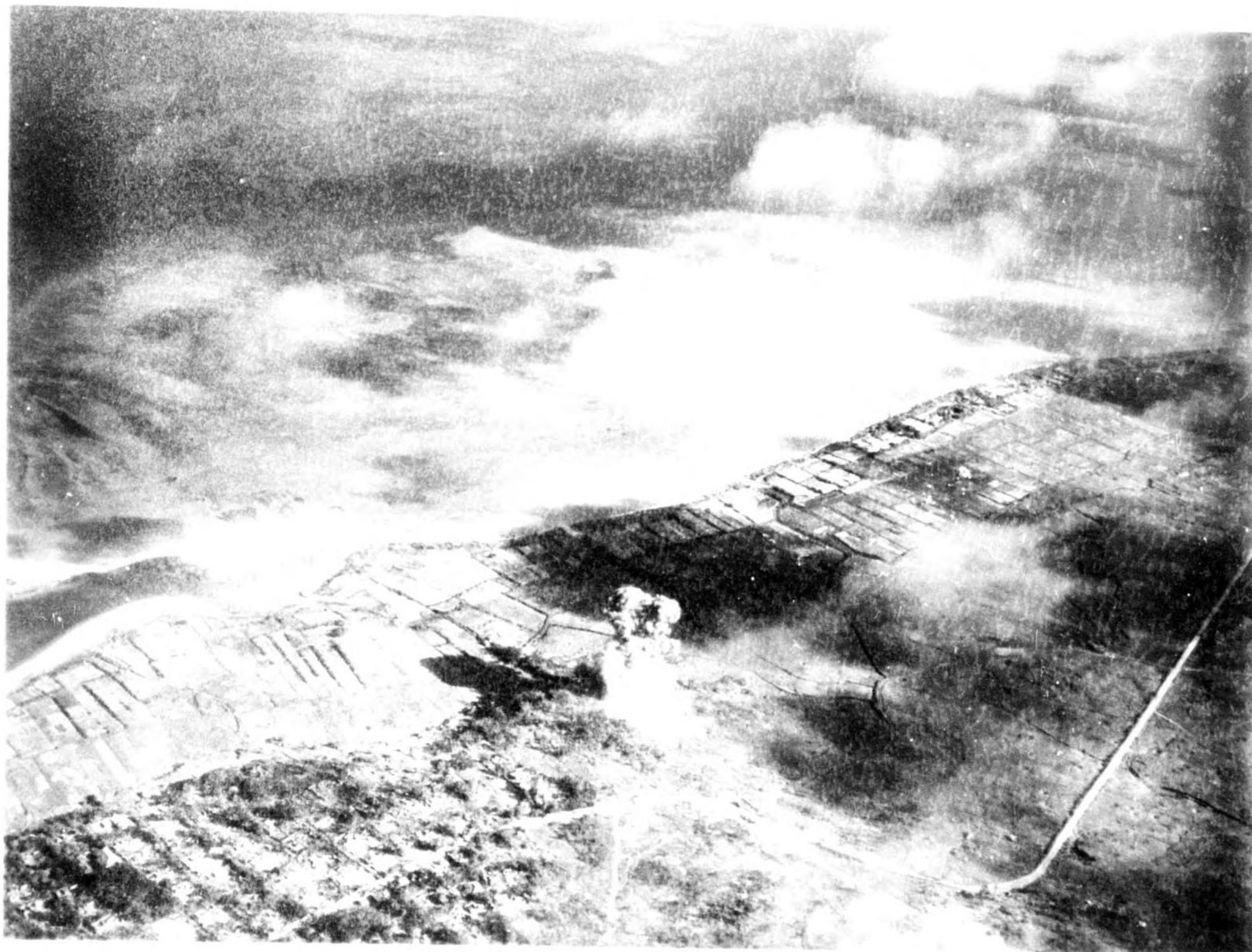
-6-  
VC-96 #74  
Bomb hits on gun  
positions along ridge  
in TA 7761 on north-  
ern ridge of Aeju-  
Dake escarpment on  
southern Okinawa.

8 June 1945





-7-  
VC-96-#79  
Bomb hits on caves  
along ridge on south-  
ern Okinawa, TA 7358.  
This was point of  
fanatical resistance  
at Aeju-Dake escarp-  
ment.  
15 June 1945.



-8-  
VC-96 #79  
Bomb hits on gun  
positions at edge of  
village of Nagasuku.  
15 June 1945.





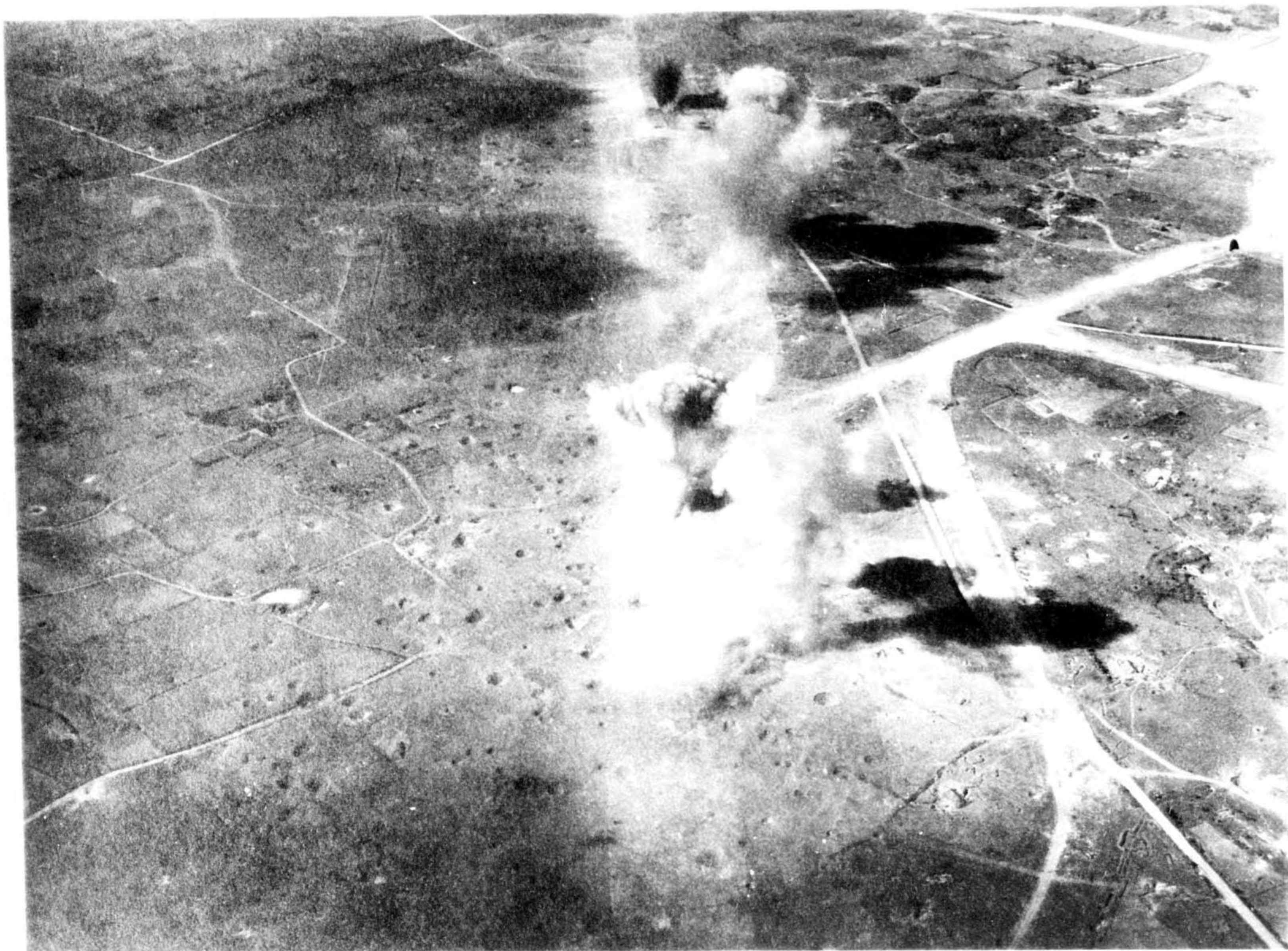
-9-  
VC-96 #79  
Bomb hits on cars  
and gun positions on  
southern Okinawa, EA  
7358 - Photo selected  
to show difficulty  
in close support  
bombing due to cloud  
conditions.

15 June 1945.



-10-  
VC-96 #80  
N-S runway at Holaru  
Airfield, Miyako.  
17 June 1945.



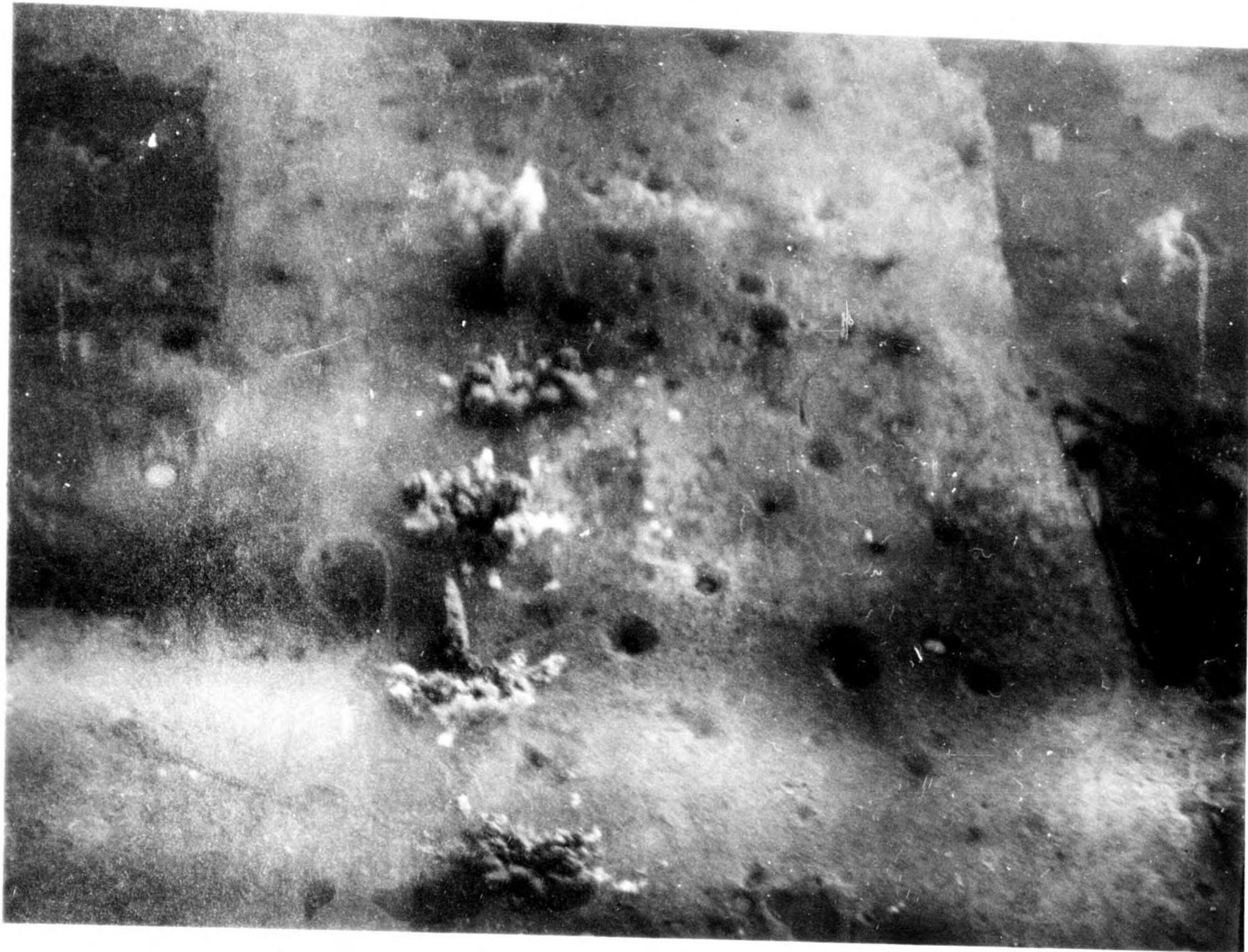


-11-  
VC-96 #81  
One of many hits on  
N-S runway at Hobaru  
Airfield, Miyako.  
17 June 1945.



-12-  
VC-96 #83  
Portion of runway at  
Miyara.  
21 June 1945.





-13-  
VC-96 #83  
Pattern of bombs down  
Miyara runway, Miyako  
rendering runway  
further inoperative.  
21 June 1945.



-14-  
VC-96 #87  
Bomb hits down runway  
on Sukama Field,  
Miyako.  
22 June 1945.