

Historic, archived document

Do not assume content reflects current scientific knowledge, policies, or practices.

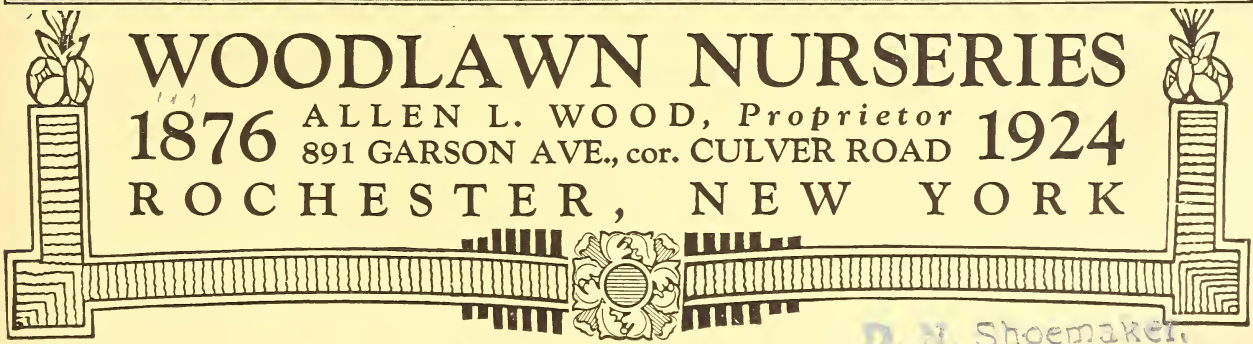
62.61

LIBRARY
RECEIVED
★ FEB 12 1924 ★
U.S. Department of Agriculture.



WOODLAWN NURSERIES

1876 ALLEN L. WOOD, *Proprietor* 1924
891 GARSON AVE., cor. CULVER ROAD
ROCHESTER, NEW YORK



D. N. Shoemaker



ONE OF OUR BLOCKS OF TWO-YEAR-OLD APPLE TREES

WE GUARANTEE ALL OUR STOCK TRUE TO NAME

(SEE ORDER BLANK)

This Catalog Is Our Only Salesman We Employ No Agents

If we had to pay salesmen's commissions, salaries and traveling expenses, we could not afford to sell our stock as cheap as we do, as it would add 50 to 60 per cent to the cost of same. We grow our own nursery stock and sell it direct from our Nurseries to you. Our good business record is known all over the country. Agents from other Nurseries say that trees sold at our prices cannot be first class. This is what the United States Department of Agriculture says in *The Farmer's Bulletin*, No. 113:

"If the farmer makes his purchase direct from the Nurseryman, he will save the expense of the middleman or agent, and is less liable to the mistakes and injuries that may occur through repeated handling."

Deal direct with the grower. It's the sure way to get good stock and the only way to save money when buying trees and plants

BE SURE TO READ PAGE 5 BEFORE ORDERING

CERTIFICATE—NO. 18

STATE OF NEW YORK
DEPARTMENT OF FARMS AND MARKETS
BERNE A. PYRKE, Commissioner

CERTIFICATE OF INSPECTION OF NURSERY STOCK

THIS IS TO CERTIFY that the nursery stock of Allen L. Wood of Rochester, County of Monroe, State of New York, was duly examined in compliance with the provisions of Article 14 of the Farms and Markets Law, and was found to be apparently free from any contagious or infectious disease or diseases, or the San Jose scale or other dangerously injurious insect pest or pests. This certificate expires September 1, 1924.

Dated, Albany, N. Y., September 1, 1923.

BERNE A. PYRKE, Commissioner.

By GEORGE G. ATWOOD,
Director, Bureau of Plant Industry.

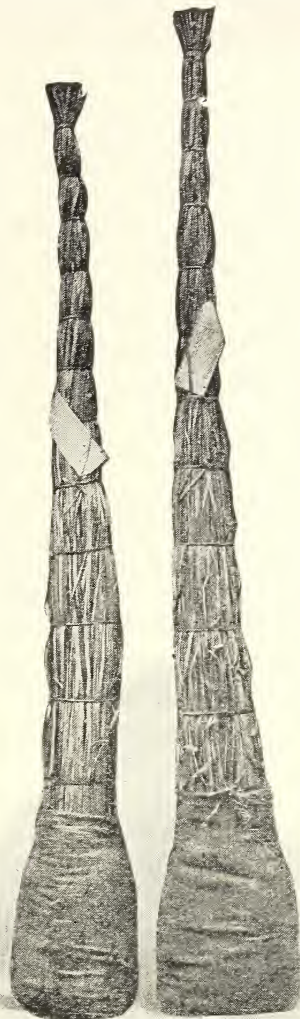
“Wood Quality”

IN TREES MEANS—good fibrous roots, well-shaped heads, clean limbs and Trees true to name.



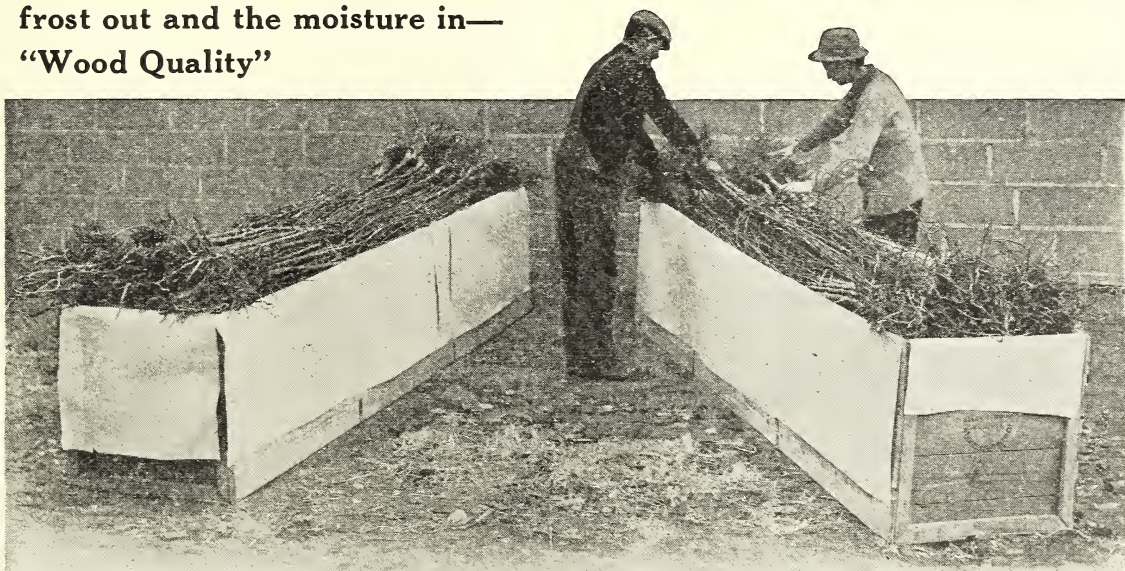
“WOOD QUALITY”

IN PACKING INSURES your order getting to you in the best of condition. Small orders are carefully tied up, the tops in flag to keep the trees from bruises and the roots in damp moss wrapped over with burlap to retain the moisture.



Large orders are packed in paper lined boxes. We use wet moss for the roots, straw for the tops. The paper lining keeps the air and frost out and the moisture in—

“Wood Quality”



ESTABLISHED FOR FORTY-EIGHT YEARS

In 1876 Mr. Wood started in the Nursery Business on one acre of land, and has gradually been increasing his plantings until he now has one of the largest Nurseries in this part of the country. He has often been asked how he built up such a large trade all over the United States, Canada and foreign countries. This is how: By always shipping stock true to name; growing the very best trees and plants, and trying to please his customers. He wants to extend thanks to his customers for advertising the trees and plants which they have purchased from him, and for helping him build up such an extensive business. If we do not have what our customers order, we write and tell them.

WOOD'S QUALITY STOCK

We have made a practice of growing the finest and best stock. It is all high grade, healthy, well-rooted and well-matured before it is dug. No San Jose or Peach Yellow has ever been found in our Nurseries. We grow all our Fruit Trees, Shrubby, Ornamental Trees, Vines, Roses, Hedge Plants, etc. The seedlings which we use are of the very best and are all imported from France. They are cultivated twice each week, which makes good roots. Our Roses are all budded from Roses that are in bloom. We guarantee all our stock to be true to name and free from all diseases.

PACKING CELLAR

Our Packing Cellar in which your orders are packed is frost-proof and keeps the sun and wind from drying up the roots on the stock. It covers over an acre of ground. On page 3 we show how your orders are packed.



OUR FREIGHT PLATFORM

INFORMATION FOR CUSTOMERS

BE SURE TO READ THIS PAGE—IMPORTANT

OUR CATALOG

In presenting this 48th edition of our catalog we extend thanks for your past patronage and assure you, and all customers, of prompt and careful attention to all inquiries and orders with which you may favor us.

RELIABILITY

For forty-eight years we have devoted our time to the growing of high grade nursery stock and have built up a business that enables us to list ourselves among the foremost nurserymen in the country. As to our reliability, we are pleased to refer you to Dun's or Bradstreet's or any bank or business house in Rochester.

HOW TO ORDER

In making out your order, be particular to specify just what is wanted. Your name, postoffice and shipping point should be written plainly to avoid mistakes. If you are in doubt as to whether your stock should go forward by express or freight, you may leave it to us and we will use our best judgment.

PARCEL POST

Small packages can be forwarded by parcel post. Postage is required on orders to be sent by parcel post. Strawberries should be sent either by express or mail—not freight. SEND PAYMENT WITH ORDER. All orders are acknowledged immediately upon receipt.

PACKING

OUR PACKING CELLAR, covering over one acre of ground, and in which the sun or the wind cannot dry up the roots of stock, is where all our orders are packed. Care is given to the packing of each order, which enables us to get your stock to you in fresh condition.

Small orders are carefully tied up, the tops in flag to keep the trees from bruises and the roots in damp moss wrapped over with burlap to retain the moisture. Large orders are packed in paper lined boxes. We use wet moss for the roots and straw for the tops. The paper lining keeps the air and frost out and the moisture in.

SHIPPING

We do not charge for packing, boxing or delivering to freight offices or express companies. We do not prepay charges, unless goods are to be delivered to a prepaid station, as all our prices and quotations are FREE ON BOARD CARS AT OUR NURSERIES. If there is no agent at your station, and shipment has to be prepaid, notify us and we will prepay charges and bill you for same after shipment is made.

SHIPPING SEASONS

The spring shipping season usually commences here about March 1st, and continues until about May 15th. Of course, the time of shipping your stock depends on your location. We commence making Southern shipments about January 1st. Our fall season commences about October 15th, and we continue to make shipments until the ground freezes. We advise spring planting for Berry plants and Peach trees.

HOW TO REMIT

Remittance should be made by check, postoffice money order, express money order or draft on New York bank, or registered letter.

RATES

Five trees or more at ten rate.
Fifty trees or more at hundred rate.
Five hundred trees or more at thousand rate.

TERMS

Cash with order, except in large orders, when satisfactory reference is given. We will ship trees and plants C. O. D. if 25% of the total amount of your order is sent in cash. The balance to be collected on delivery of stock.

GRADING

We guarantee every Tree, Plant, etc., to be up to grade specified or better. All our Fruit Trees are graded by height and caliper.

What To Do With Trees When They Arrive

If possible remove the trees from the box at once on arrival and heel them in securely in the garden. I mean by this, give them a temporary planting in a trench, which prevents the roots or branches from drying. If they cannot be removed from the box at once, and packing material gives evidence of being at all dry, apply water to both ends of the box, where the roots are located, keeping the box meanwhile in as cool a place as possible. A cool cellar is a good place to keep the box of trees waiting for the day of planting.

Distance for Planting

Apples, Standard.....30 to 40'	Grapes	8 by 10'
Apples, Dwarf.....8 to 10'	Currants	3 by 5'
Pears, Standard.....18 to 20'	Gooseberries	3 by 5'
Pears, Dwarf.....10'	Raspberries, Red 3 by 6'	
Peaches	Raspberries,	
Nectarines a n d	Black	3 by 6'
Apricots	Blackberries	5 by 7'
Cherries, Sweet.....18 to 20'	Strawberries, rows 1 by 4'	
Cherries, Sour.....15 to 18'	Strawberries in	
Plums	beds	1 1/2 by 1 1/2'
Quinces	Asparagus, in	
Asparagus, in field..1 by 3'	beds	1 by 1 1/2'

Trees and Plants to the Acres

2 feet each way..10,890	15 feet each way..	194
3 feet each way.. 4,840	18 feet each way..	135
4 feet each way.. 2,723	20 feet each way..	110
5 feet each way.. 1,742	25 feet each way..	70
6 feet each way.. 1,210	30 feet each way..	48
8 feet each way.. 680	33 feet each way..	40
10 feet each way.. 430	40 feet each way..	28
12 feet each way.. 202		

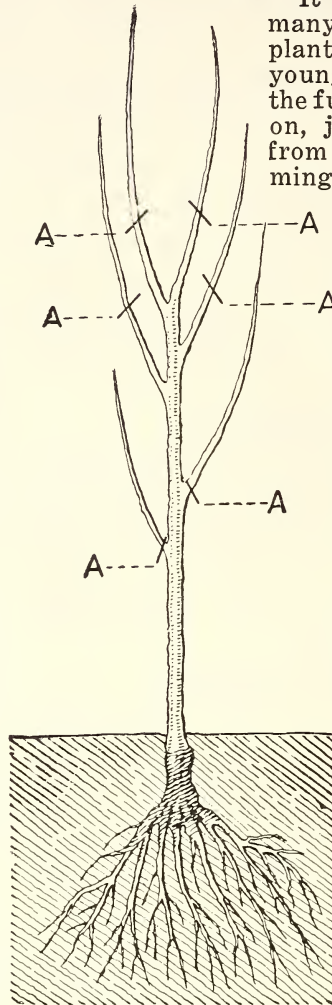
To estimate the number of plants required for an acre, at any given distance, multiply the distance between the rows by the distance between the plants, which will give the number of square feet allotted to each plant, and divide the number of square feet in an acre (43,560) by this number. The quotient will be the number of plants required.

WHY TREES DIE—The majority of trees that fail to live, die from careless or improper planting. We feel sure that if you will carefully follow the instructions as given in our little pamphlet on planting and managing nursery stock, which we send the same day as orders are shipped, your trees will grow and prove a source of pleasure and profit. Nothing flourishes with neglect. This is true with trees as well as everything else. Handle your trees carefully, plant them correctly and give them a little attention after planting, and you will be surprised at the ease with which very favorable results can be obtained.

Mulching—This is properly done by placing a layer of coarse manure, straw, marsh hay, leaves or loose chip dirt, from three to six inches deep on the surface about the tree, extending one or two feet farther, in each direction, than the roots. This keeps the ground moist, of even temperature, and renders watering unnecessary. The sod which was removed in digging the hole can be used, but it should be moved occasionally to prevent it from beginning to grow again. Trees treated in this manner make better growth and are more certain to live.

TRIMMING

It is surprising how many orchards you see planted out with the young trees left with the full amount of limbs on, just as they came from the nursery. Trimming should be done either immediately before or after planting. This is the most essential work next to planting, and the lack of severe trimming is why many do not succeed. Do not be afraid that you are going to trim your trees too severely. Peach trees require more severe trimming than anything else. By the accompanying drawing we endeavor to show how a young tree should be trimmed and planted. Trim the young tree the way you want it to grow. If a low headed tree is preferred, cut back the top, leaving such limbs as you may want.



In the drawing we have shown the most popular way of trimming young trees. This generally gives a medium height tree very well formed. The cross lines marked "A" on the limbs show where the cut should be made. The two lower limbs are too low to be left on, and should be cut off close to the trunk as marked by the lines "A." If more attention is given to the planting, trimming and care of nursery stock, the grower will have better results.

"WOOD QUALITY"

FOR THOSE WHO WANT THE BEST—We have made it our business for over forty-eight years to please the public and give them the very best we could produce in the way of plants, vines and trees. Fruit growers who have seen our big blocks of Apples, Peaches, Pears, Cherries, etc., say they are the best they ever saw growing. Not only are they large, vigorous trees, full of vitality, but they are true to name, which is one of the most important things in connection with tree growing.

Satisfied Customers Are Our Best Advertisers

Here are only a very few of the many unsolicited letters we have received from our customers testifying as to the quality of our stock, prompt attention in filling orders, and fair dealing. Read them:

New York, N. Y., Oct. 13, 1923

Mr. Allen L. Wood

Dear Sir:

This is just a few lines to let you know of my appreciation for the fine, hardy rose bushes and hedge plants that you sent me this spring and which in six weeks time made my summer home at Keansburg, N. J., the show place of that famous resort.

I am expecting to place another order with you this coming spring.

With all just dues to your promises that have always been fulfilled, I remain

Yours very truly,

(Signed) MAX GOLDBERG.

Richmond, Va., March 19, 1923

Allen L. Wood, Rochester, N. Y.

Dear Sir—The fruit trees and raspberry plants arrived in excellent shape and were taken care of. They are extra fine and I will take pleasure in showing them to my neighbors. It will also be a pleasure to call on you again when in need of trees or plants.

Very truly yours,

(Signed) PETER C. WARWICK, JR.

S. Royalton, Vt., May 8, 1923

Allen L. Wood

Dear Sir—Wish to say the stock arrived in fine shape, the same day I received your notification. I want to thank you for the nice shape in which they were packed, and also for trimming.

Very truly yours,

(Signed) MOSES D. ROWELL.

Albert Lea, Minn., April 25, 1923

Woodlawn Nurseries, Rochester, N. Y.

Gentlemen—We have just received the shipment of Transcendents and are very much pleased with them. In fact, they are about as fine a lot of trees as we have ever seen and you may be sure it's a pleasure to open up a box of that kind.

Very truly yours,

(Signed) WEDGE NURSERY.

Coraopolis, Pa., R. D. No. 3

Allen L. Wood

Dear Sir—Received my order of trees and grape vines a few days after they were shipped. Everything all right and in good shape. Have them planted and thank you very much for promptness and good quality of trees, etc.

You can depend on my future orders.

Yours truly,

(Signed) J. C. COLEMAN.

Detroit, Mich., May 3, 1923

Woodlawn Nurseries, Rochester, N. Y.

Dear Sirs—Received my latest order of ten peach trees and they sure were fine ones, in perfect planting condition.

One thing that I like particularly about all your trees is that they have plenty of good, long roots. That is the main essential of any tree.

I'll remember you next season and recommend you whenever I can.

Sincerely yours,

(Signed) HENRY H. LONGFIELD.

Vineland, N. J., June 7, 1923

Woodlawn Nurseries, Rochester, N. Y.

Dear Sirs—The trees I ordered from you came O. K. and very fine stock; the best I ever saw, especially the Peach trees, and they are growing fine.

Yours truly,

(Signed) C. P. HOLBROOK.

Milford, N. H., May 8, 1923

Woodlawn Nurseries, Rochester, N. Y.

Dear Sirs—This is to notify you that my Nursery stock arrived today in the very best condition. I am pleased with it in every way. The trees that I have gotten from you for the past three years are growing to beat the band.

Yours truly,

(Signed) JOHN J. SHAYLOR.

Binghamton, N. Y., March 30, 1923

Woodlawn Nurseries, Rochester, N. Y.

Gentlemen—Received the trees and rose bushes a week ago Saturday, less than a week after I sent for them. The service was excellent and the trees and bushes were in fine shape.

Very truly yours,

(Signed) MRS. M. W. THOMAS.

Youngstown, O., May 9, 1923

Woodlawn Nurseries, Rochester, N. Y.

Gentlemen—I beg to advise the Weeping Mt. Ash arrived in perfect condition. It surely is a fine specimen.

Yours truly,

(Signed) WILLIAM H. FELGER.

Worcester, Mass., May 28, 1923

Allen L. Wood, Rochester, N. Y.

Dear Sir—I am in receipt of your letter of the twenty-fourth. I would like to say that I got my trees the twenty-third and planted them the very same day. I thank you for sending me such promising young trees.

Yours truly,

(Signed) DAVID BERGSTROM.

East Palestine, O., April, 1923

Allen L. Wood, Rochester, N. Y.

Dear Sir—We received our stock and the roses were fine; the nicest shrubbery we have ever received. We had just given an order for \$11.50 to another Nursery before we received your catalogue. We were sorry because your prices were so much cheaper.

We were certainly pleased with the roses and we hope next spring to give you another order.

Yours respectfully,

(Signed) H. LEE WISE.

Newport, N. Y., April 17, 1923

Woodlawn Nurseries, Rochester, N. Y.

Gentlemen—We received the stock and were so well pleased with it that we have given your catalogue to one of our neighbors, who ordered one hundred St. Regis raspberry plants and two dozen strawberry plants. She told me every one of them lived and were doing fine.

Yours truly,

(Signed) J. CHAS. MILLER.

WOOD'S RELIABLE APPLE TREES

PRICES OF ALL VARIETIES OF APPLE TREES (EXCEPT OTHERWISE NOTED)

	Height	Caliper	Grade	Each	Ten	Hundred
Largest Size—2 Years	6 to 7 ft.	3/4" and up	XXX	\$.75	\$6.50	\$50.00
Medium Size—2 Years	5 to 6 ft.	5/8" to 3/4"	XX	.65	5.50	40.00
Smaller Size—2 Years	4 to 5 ft.	1/2" to 5/8"	X	.50	4.00	30.00
Largest Size—1 Year	3 ft. and up, Sturdy Buds		XXX	.65	5.50	40.00

P. Post Size—First class 3- ft. trees sent by parcel post, postage paid, 40c each; \$3.50 per ten.

Extra Large Size—Three and four-year-old trees, \$1.00 each; \$9.00 per ten.



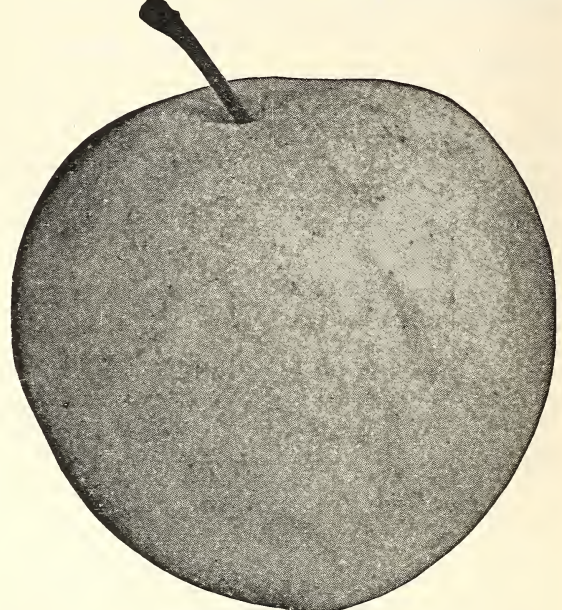
XXX XX X

WOOD'S QUALITY APPLE TREES

Note the abundance of fine fibrous roots; the result of the frequent and careful cultivation given all of our stock.

SUMMER VARIETIES

- Early Harvest—Medium size, pale yellow.
- Red Astrachan—A very handsome summer variety, rather acid in flavor.
- Sweet Bough—Fruit is large, pale yellow.



Yellow Transparent

Yellow Transparent—Earliest Apple, pale yellow; mild, yet of sprightly flavor; good quality. Bears abundantly very early. Three-year trees frequently produce fine fruit. Should be in every garden. July.



One of our large blocks of 250,000 one-year old Apple trees; all buded on French Apple seedlings



One of Wood's Quality trees. Twelve-year-old McIntosh Apple tree on Cedar Crest Farm, N. Y.

AUTUMN VARIETIES

Duchess of Oldenburg—Red striped; tender and juicy. The fruit brings a high price on the market.

Fall Pippin—Very large; yellow, tender, juicy and rich.

Fameuse (Snow Apple)—One of the finest dessert fruits. Tender and delicious.

Wealthy—Medium, roundish; skin mostly covered with dark red; flesh white. A variety of great value on account of its hardiness.

WINTER VARIETIES

Ben Davis—A commercial sort. A very early bearer and one of the best keeping Apples on the market today. Deep red in color.

King—A superb red Apple of the largest size and finest quality.

Grimes Golden—Beautiful, rich, golden-yellow Apple with flesh that is tender, juicy and fine. Early, an annual and good cropper; a vigorous and hardy grower.

Hubbardston Nonesuch—Large, roundish, smooth Apple with a yellow skin mottled and splashed with bright red. The flesh is firm, finely grained, tender, crisp and juicy.

Prices of McIntosh and Baldwin

	Each	Ten	Hundred
5 to 7 ft. XXX grade	\$.85	\$7.50	\$65.00
4 to 5 ft. XX grade	.75	7.00	50.00
3 to 4 ft. X grade	.60	5.00	40.00

1-Year McIntosh and Baldwins, 3 to 5 ft. Extra strong, \$5.50 per 10; \$40.00 per 100.

McIntosh Red—A very attractive Apple; deep red color; uniform size. Flesh white, firm, crisp and tender. Season, October until May. Vigorous grower; bears within four or five years. McIntosh brings a good price on the market and makes a profitable investment for the fruit grower.

Baldwin—Leading commercial variety in the orchards of New York, Pennsylvania and Ohio. The standard fruit in the American markets and one of the leading Apples used in cold storage for the export trade. Large, red, winter Apple and very desirable on account of size, color and quality. Fruit keeps in common storage until April.

Winter Banana—Fruit large, clear pale yellow with beautiful contrasting pinkish-red blush. Flesh yellowish-white, tender, mild and sub-acid; flavored like a banana. Excels as a dessert Apple. Bears early. Sells for the highest price on the market when packed for fancy trade.



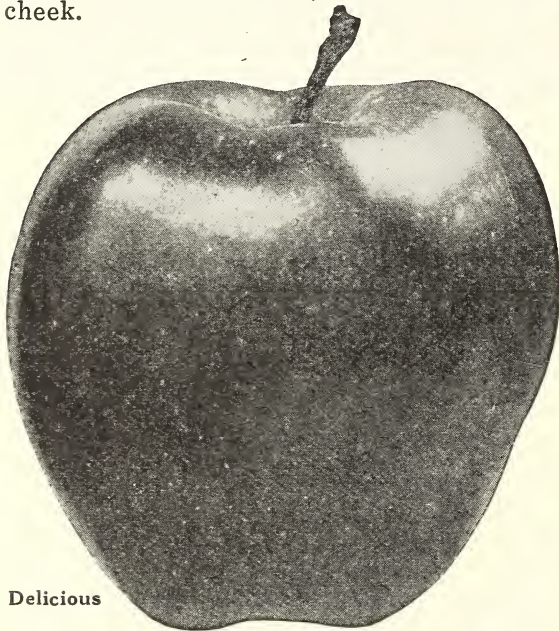
A small portion of an Apple Orchard of 800 "Wood Quality" Trees of Baldwin, Wealthy and Duchess of Oldenburg, planted by Mr. Wallace, of Middleport, N. Y.

Rome Beauty—A large, smooth, uniform sized Apple beautifully shaded and striped with red. It is an annual bearer.

Rhode Island Greening—Is of the highest quality and ranks next in popularity to the Baldwin.

Price of R. I. Greening	Each	Ten	Hundred
5 to 7 ft. XXX grade	\$.85	\$7.50	\$65.00
4 to 5 ft. XX grade	.75	7.00	50.00
3 to 4 ft. X grade	.60	5.00	40.00

Tolman Sweet—Splendid sweet winter Apple. Yellow in color, with a faint blush cheek.



Delicious

Delicious—A remarkable variety rapidly taking first rank both for commercial and home orchards. No new variety has ever so quickly gained popularity in so many different apple sections of our country. Fruit large, nearly covered with brilliant dark red; flesh finely grained, crisp and melting, juicy with a delightful aroma; of very highest quality. A splendid keeper and shipper.

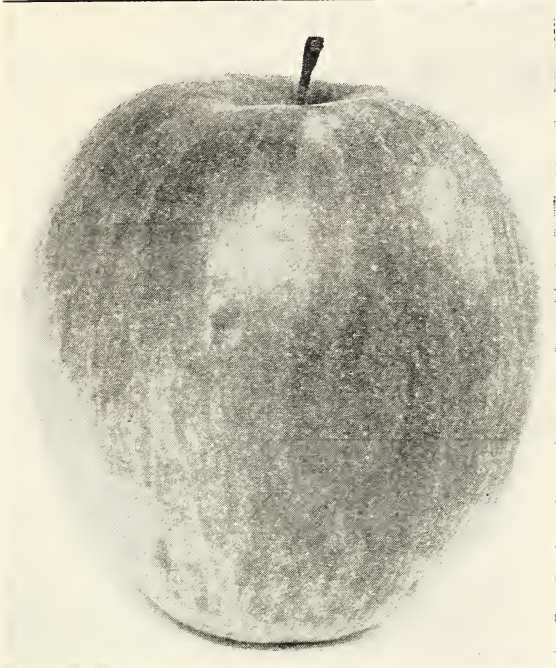
Woodlawn Golden Pippin—Is one of the very best varieties. The Apple is golden yellow with a delicious flavor. The flesh is firm, crisp and juicy. It is the best Apple for baking that can be grown.

North Western Greening—A very hardy and vigorous variety. Tree is a strong grower and a very productive and reliable cropper. Fruit is large, greenish-yellow, juicy and sub-acid.



"Wood Quality" Jonathan Apple Trees planted four years ago by Wm. Powley, Lyndonville, N. Y.

Jonathan—Is of the Spitzenburg class. It is very beautiful, of a brilliant red color, highly flavored, and of excellent quality for either dessert or culinary use. It excels its parent in hardiness, productiveness, health and vigor—comes into bearing young, but requires a fertile, well tilled soil. The flesh is whitish, sometimes tinged with red. It brings a fancy price at the holiday season.



OHIO BEAUTY

One of the Finest Apples in the World

This wonderful Apple was brought to our attention by Mr. John M. Rutledge of Ohio, in the fall of 1914. He was given two Apples as samples, which he found very delicious. He learned they were from a hardy and vigorous tree, believed to have grown from a seedling. We immediately began to propagate this variety by budding a number of trees from scions received from him.

The Apples are exceptionally large, uniform in size and shape. Skin smooth; color yellow or greenish-blush, striped with red; flesh slightly tinged with yellow; crisp, tender, aromatic, juicy and sub-acid, which makes it an extra fine eating and cooking Apple. Season, December until April.

The "Ohio Beauty" is one of the most handsome winter fruits grown. Its high quality, vigor, productiveness, great beauty and shipping qualities put it in a class by itself.

We have the exclusive sale of "Ohio Beauty" Apple trees and sell them under a special guarantee seal, which is affixed to each tree or bundle of trees.

	Each	Ten	Hundred
5 to 7 ft. XXX grade	\$1.00	\$8.50	\$75.00
4 to 5 ft. XX grade	.85	7.50	60.00
3 to 4 ft. X grade	.65	5.00	40.00

Mail Size, 65c each; 3 for \$1.75
5 trees at 10 rate; 50 at 100 rate

EXTRA LARGE SIZE TREES
THREE AND FOUR YEARS OLD
\$1.50 each; \$12.00 per ten

Northern Spy—The fruit is large and attractive, being of a bright red color. Flesh is very juicy, crisp and tender. This variety ranks about third in commercial importance.

	Each	Ten	Hundred
5 to 7 ft. XXX grade	\$.85	\$7.50	\$65.00
4 to 5 ft. XX grade	.75	7.00	50.00
3 to 4 ft. X grade	.60	5.00	40.00

One year old Northern Spy, 3 to 5 ft.
Extra strong. \$5.50 per 10;
\$40.00 per 100.

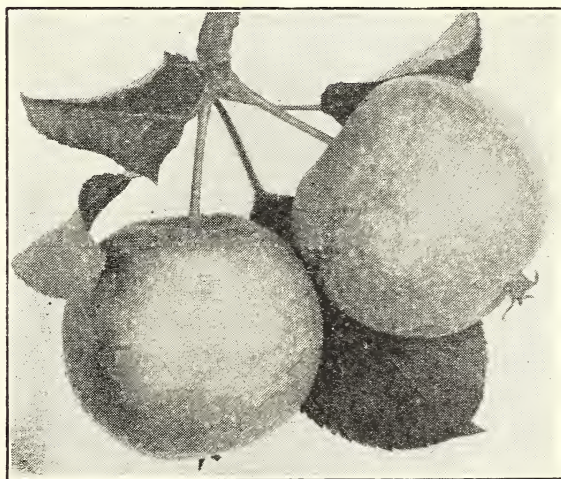
Stayman's Wine Sap—Tree vigorous, hardy, spreading. An early bearer and very productive; fruit medium size, round, approaching conic; skin smooth, greenish-yellow, splashed and striped with red and purple; flesh yellow, firm, tender, juicy, rich, sub-acid, aromatic, quality best. Splendid late keeper.

York Imperial—It is one of the leading Apples in Pennsylvania and the Middle Atlantic States and over a belt of country extending west into Missouri and Kansas.

Wagener—A superior Apple. The color is a beautiful bright red with some contrasting pale yellow. It has fine texture, high flavor and excellent quality. It is desirable for culinary use, but is especially esteemed for dessert. Wagener is a good grower, comes into bearing at an early age, and is a reliable cropper. It is planted a great deal as a filler for orchards.

Crab Apple Trees

Price of Crab Apple Trees
Same as Apple Trees



Hyslop

Hyslop—Large, dark red, flesh yellow, sub-acid. Very productive and hardy. Excels for making fine jellies and preserves.

Transcendent—This fruit has for many years been one of the most popular of the Crab Apples. Large, yellow with rich crimson cheek. September.

STANDARD PEAR TREES

OUR PEAR TREES ARE ALL BUDDED ON IMPORTED FRENCH STOCK
WHICH GIVES THEM THE FINEST ROOT SYSTEM



A Six-year-old Kieffer Orchard "Wood Quality" Trees—Mr. Albert Brand, Middleport, N. Y.

PRICES OF ALL VARIETIES OF STANDARD PEAR TREES

	Height	Caliper	Grade	Each	Ten	Hundred
Largest Size—2 Years—	6 to 7 ft.	3/4" and up	XXX	\$1.00	\$9.00	\$80.00
Medium Size—2 Years—	5 to 6 ft.	5/8" to 3/4"	XX	.85	8.00	70.00
Smaller Size—2 Years—	4 to 5 ft.	1/2" to 5/8"	X	.75	6.00	50.00
Largest Size—1 Year —	3 ft. and up,	Sturdy Buds XXX		.75	6.00	50.00
P. Post Size—First class 3-ft. trees sent by parcel post, postage paid, 70c each; \$6.50 per ten.						
Extra Large Size—Three and four-year-old trees, \$1.25 each; \$11.00 per ten.						

Kieffer—A popular Pear with fruit growers. Large, rich yellow, tinged with red, somewhat russet; very handsome. Flesh is white, buttery and juicy. Very valuable for canning purposes. Kieffer bears fruit when other kinds fail. Tree is a vigorous grower, early and regular bearer. September to November.

Clapp's Favorite—Very large size; pale lemon-yellow color, with a bright crimson cheek. The flesh is finely grained, juicy, melting and buttery. Earlier than Bartlett. August and September.

Seckel—Our most highly flavored Pear, the standard of excellence. Fruit small,

yellowish-brown, with a russet-red cheek; flesh very juicy, melting, aromatic, with a rich, spicy flavor; quality very best. September and October.

Flemish Beauty—A pale yellow Pear almost covered with light russet, which becomes reddish-brown when ripe. The fruit is large, melting, sweet and rich. September and October.

Sheldon—This is of very large size. It is roundish in shape and has a greenish-yellow color, covered with light russet. It is very juicy, melting, and has a tasty flavor. The tree is a fine grower and a good bearer. Season is October and November.



A three-year-old Pear orchard—Trees planted by Mr. Wm. Powley of Lyndonville, N. Y.
All "Wood Quality" Trees

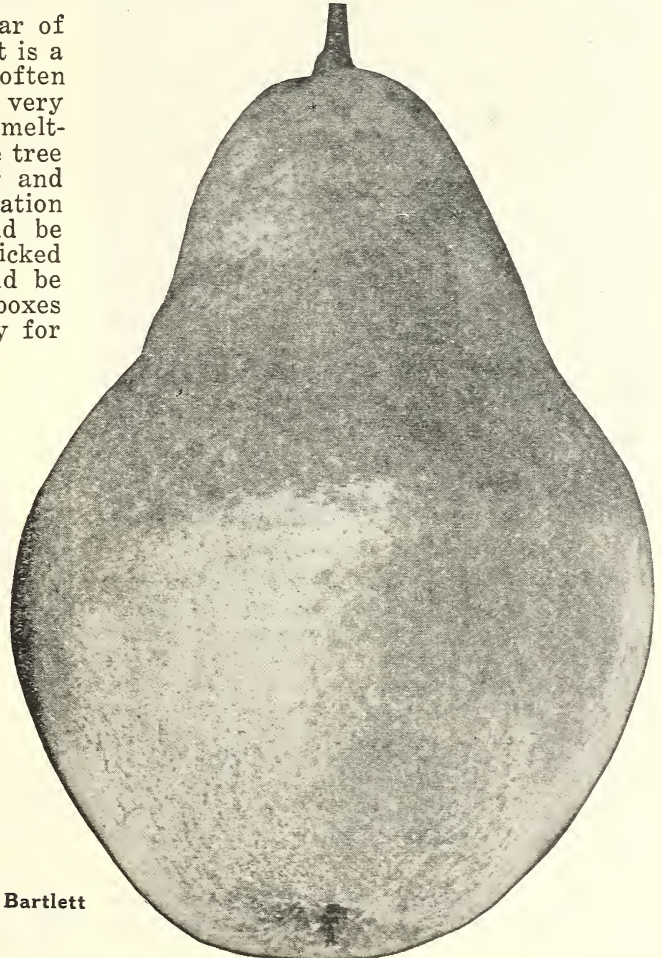
Bartlett—The best and most popular of all Pears for market and home use. It is a rich golden-yellow color when ripe, often with a soft blush on sunny side. It is very large, thin skinned; flesh buttery and melting, and has a rich musky flavor. The tree is a strong grower and bears young and abundantly. It requires careful cultivation to get the best results. Fruit should be thinned when small and should be picked just before it is ripe. Then it should be wrapped in paper, packed in tight boxes and placed in a cool cellar until ready for use. Season, August and September.

Beurre d'Anjou—This is one of the most popular and valuable Pears one can buy. A large, handsome fruit, with a fine vinous flavor; buttery and melting. It is a fine keeper and will stay good until mid-winter. The tree is a vigorous grower and a good bearer. Fruit should be picked the latter part of October or first of November.

Remember how the Department of Agriculture advises you to buy your Trees and Plants?

"Direct from the grower"

We have been growing trees for forty-eight years.



Bartlett

DWARF PEAR TREES

**BUDED ON IMPORTED FRENCH QUINCE STOCK, WHICH GIVES THEM
THE FINEST ROOT SYSTEM**

The dwarf varieties of Pears require less than one-fifth the space necessary for the standard varieties. The trees are low-headed and the fruit is easily handled, and comes into bearing usually the second or third year. The trees should be planted three inches below the bud.

PRICES OF ALL VARIETIES OF DWARF PEAR TREES

	Height	Caliper	Grade	Each	Ten	Hundred
Largest Size—2 Years—	3 to 4 ft.	5/8" and up	XXX	\$.75	\$6.00	\$50.00
Medium Size—2 Years—	2 to 3 ft.	1/2" to 5/8"	XX	.60	5.00	40.00
P. Post Size—2 Years—First class trees sent by parcel post, postage paid, 60c each; \$5.00 per ten.						



Three-year-old Dwarf Duchess

Duchess—The most popular of all dwarfs and the one most widely grown. Duchess is a great yielder and a great money getter. The tree is hardy and thrifty and bears uniformly big crops. It is a very early bearer, sometimes fruiting the first season after planting. The fruit is very large, frequently weighing a pound; dull greenish-yellow, spotted with russet; flesh white, rich and of good quality. A very valuable Pear for the home garden or commercial orchard.

Kieffer—A popular pear with fruit growers. Large, rich yellow; valuable for canning.

Bartlett—Dwarf Pears are similar to the standard fruit of the same variety, and are very profitable.

Beurre d'Anjou—A great money-making dwarf that should be extensively planted.

Clapp's Favorite—This is a very good dwarf variety which is used extensively for fillers in orchards, mainly Apple orchards.

Seckel—This variety is valuable, both as a standard and dwarf. Fruit is the same on either tree. This makes a good filler for an Apple or standard Pear orchard.

Quince Trees

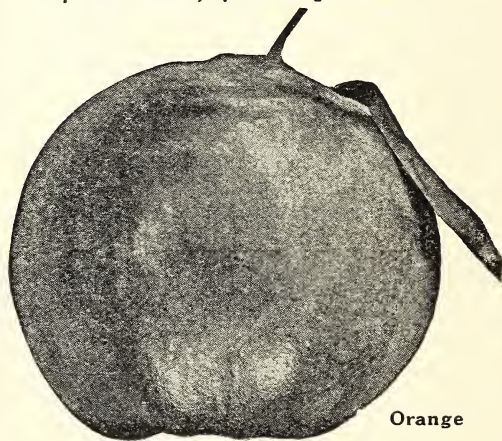
	Each	Ten	Hundred
4 to 5 ft. XXX grade	\$1.25	\$11.00	\$100.00
3 to 4 ft. XX grade	1.00	9.00	85.00
2 to 3 ft. X grade	.80	7.00	65.00

Mail Size, 75c each; 3 for \$2.00

5 trees at 10 rate; 50 at 100 rate

EXTRA LARGE SIZE TREES

\$1.50 each; \$13.50 per ten



Orange

Orange—More largely planted than any other variety. Orange is large, bright golden-yellow. Cooks very tender and has a fine flavor.

Rea's Mammoth—We consider this the best of all the Quinces. The largest and in every respect the finest variety of the Quince.



OUR TWO-YEAR-OLD BLOCK OF SOUR CHERRY TREES

CHERRY TREES

THE CHERRY, being a very hardy tree, will thrive nearly on any good soil, but does best in a warm, dry, sandy, gravelly or clay loam. The most important thing is to have the soil dry; no other fruit is so greatly injured by excessive moisture as is the Cherry.

The Cherry is one of the most profitable, if not the most profitable, of all the fruits that are grown. More and more the fruit growers of the country are taking up its culture and enormous profits are being realized from young orchards.

This variety of fruit tree requires so little care and cultivation that there is practically no cost of labor to keep up an orchard. Hence greater profits from the fruit.

Cherries are divided into two classes, sweet and sour. The sweets attain a larger size than the sours, but are not as hardy and are more likely to be injured by severe winters and are harder to transplant.

PRICES OF SOUR CHERRY TREES

All Budded on French Stock						
	Height	Caliper	Grade	Each	Ten	Hundred
Largest Size—2 Years—	5 to 6 ft.	3/4" and up	XXX	\$1.25	\$11.00	\$85.00
Medium Size—2 Years—	4 to 5 ft.	5/8" to 3/4"	XX	1.00	8.50	75.00
Smaller Size—2 Years—	3 to 4 ft.	1/2" to 5/8"	X	.75	6.50	50.00
Largest Size—1 Year —	3 ft. and up,	Sturdy Buds	XXX	1.00	8.50	75.00
P. Post Size—2 Years—First class trees sent by parcel post, postage paid, 75c each; \$6.50 per ten.						

Extra Large Size—3 Year trees—\$1.50 each; \$12.50 per ten.

Montmorency—A beautiful, large, red sour Cherry. The fruit is clear, bright red and of good size. Flesh is of fine quality, sub-acid. The trees are clean growers and prolific bearers. No matter how unfavorable the season may be, Montmorency can be depended upon for a full crop. It is a good shipper, very attractive looking and always brings good prices. The canning factories use large quantities of them and the demand is greater than the supply. Fruit ripens ten days later than Early Richmond.

English Morello—Best late sour Cherry, very dark red color, sometimes nearly black. Tree is small grower. Fruit ripens about two weeks later than Montmorency.

Early Richmond—One of the most valuable and popular Cherries for cooking purpose. A good old variety that yields marvelous crops in the garden. This hardy Cherry fruits on young trees soon after planting. Early Richmond is a great favorite throughout the West and Northwest, where only hardy varieties succeed. The tree is a free grower; hardy, healthy and very productive. Hundreds of tons of Early Richmond Cherries are now used in making Cherry wine. This is a new market for Sour Cherries which will keep the price of Cherries up. Some growers got ten to twelve cents per pound for their crop last year.



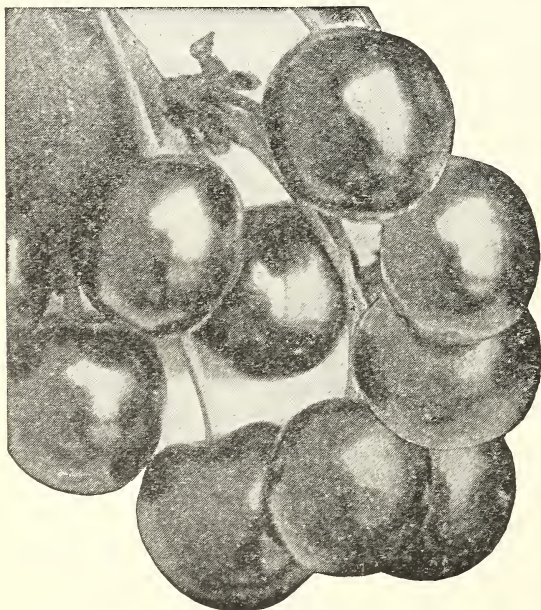
ONE OF OUR BLOCKS OF ONE-YEAR-OLD SOUR CHERRY TREES

Sweet varieties of Cherries succeed best in sandy or gravelly loam, well drained. Avoid low or wet ground. They make large pyramidal trees. Sweet Cherry trees are harder to transplant than sour varieties.

PRICES OF SWEET CHEERY TREES

All Budded on French Stock				Each	Ten	Hundred
Height	Caliper	Grade				
Largest Size—2 Years—6 to 7 ft.	3/4" and up	XXX	\$1.40	\$12.00	\$110.00	
Medium Size—2 Years—5 to 6 ft.	5/8" to 3/4"	XX	1.20	10.00	90.00	
Largest Size—1 Year—4 ft. and up,	Sturdy Buds	XXX	1.20	10.00	90.00	
Extra Large Size—3 Year trees		XXXX	1.65	15.00		

Black Tartarian—This is a large, black, heart-shaped, tender, juicy Sweet Cherry of surpassing quality. The tree is an upright, dense grower, remarkably vigorous and a regular bearer of immense crops.



Black Tartarian

Napoleon or Royal Ann—This is one of the largest and best of all sweet Cherries. It is a magnificent variety, large, sweet, pale yellow with a bright red cheek. It is a splendid shipper and fine for canning. To eat out of the hand it is unsurpassed. Flesh is very firm and juicy. Tree is a fine grower and immense bearer.

Schmidt's Bigarreau—The fruit is of very large size, of a deep mahogany color. The flesh is dark, tender, very juicy, with a fine rich flavor. Fruit grows in clusters. It is an excellent shipper and brings good money on the market.

Windsor—The standard of excellence. It was brought over from Canada, where it originated and is a very hardy, very vigorous and prolific bearer. The fruit is large, liver-colored and very handsome. The flesh is remarkably firm and of fine quality. It is the most valuable late sweet Cherry for family or commercial use.

WOOD'S CHOICE PEACH TREES

BUDED FROM BEARING TREES

PEACH growing is today a great industry and there are a great many young orchards being planted throughout the country. The ease with which these trees may be cultivated, their freedom from disease, the short period before they become productive, together with the immense demand for the fruit and the facility with which it may be shipped to markets, make Peach growing extremely profitable.

To secure healthy, vigorous and fruitful trees, the ground must be kept clean and mellow, and should receive an occasional dressing of wood ashes.

To keep the trees in good shape, it is necessary that they should be pruned yearly, all the dead and useless wood cut out and light and air let in.

OUR PEACH TREES BUDED FROM BEARING ORCHARDS

The Peach trees we are offering are **EXTRA** nice, well-rooted trees. They are propagated on seedlings produced from natural seed gathered in the mountains of North Carolina and are budded from bearing trees. They are absolutely **TRUE TO NAME, FREE FROM DISEASE** and make the **HEAVIEST BEARING ORCHARDS**.

Peach Yellow and San Jose Scale have never been found in our Nurseries.



Side view of an Elberta Peach Orchard, owned by Mr. Dudley Watson, Medina, N. Y. Trees purchased from "Woodlawn Nurseries." Each tree yielded 5 to 8 bushels of fruit when it was six years old.

PRICES OF PEACH TREES

	Height	Caliper	Grade	Each	Ten	Hundred
Largest Size—1 Year—	4 to 6 ft.	9/16" and up	XXX	\$.60	\$5.00	\$35.00
Medium Size—1 Year—	3 to 4 ft.	7/16" to 9/16"	XX	.50	4.00	30.00
Smaller Size—1 Year—	2½ to 3 ft.	5/16" to 7/16"	X	.35	2.50	17.50

Extra Large Size—1 Year—85c each; \$7.50 per ten.

P. Post Size—1 Year—First class trees sent by parcel post, postage prepaid, 35c each; \$3.00 per ten.

Elberta—The leader of all Peaches and the greatest commercial variety on the market; 50 per cent of the Peaches planted are Elbertas. In all probability no Peach will succeed over so wide a range of territory as this kind. It will thrive where any Peach can be grown. A beautiful Peach of good quality, not only the best orchard variety, but also valuable for planting in the garden. Elberta is hardier in bud than many varieties, therefore a more uniform cropper. It is large, yellow, with red cheek, juicy and highly flavored; flesh yellow, free-stone. Ripens about ten days later than Early Crawford.

Early Crawford—It seems unnecessary to describe this fine old variety. Its large size, fine, rich yellow color, with red cheek and the high quality of its rich yellow flesh, have made it the basis for comparison in excellence of all varieties which conform more or less to its chief characteristics. The Crawford "type" of Peach is so well recognized in the market that those which come later and are of this general type of Peach have succeeded best as commercial varieties. September.

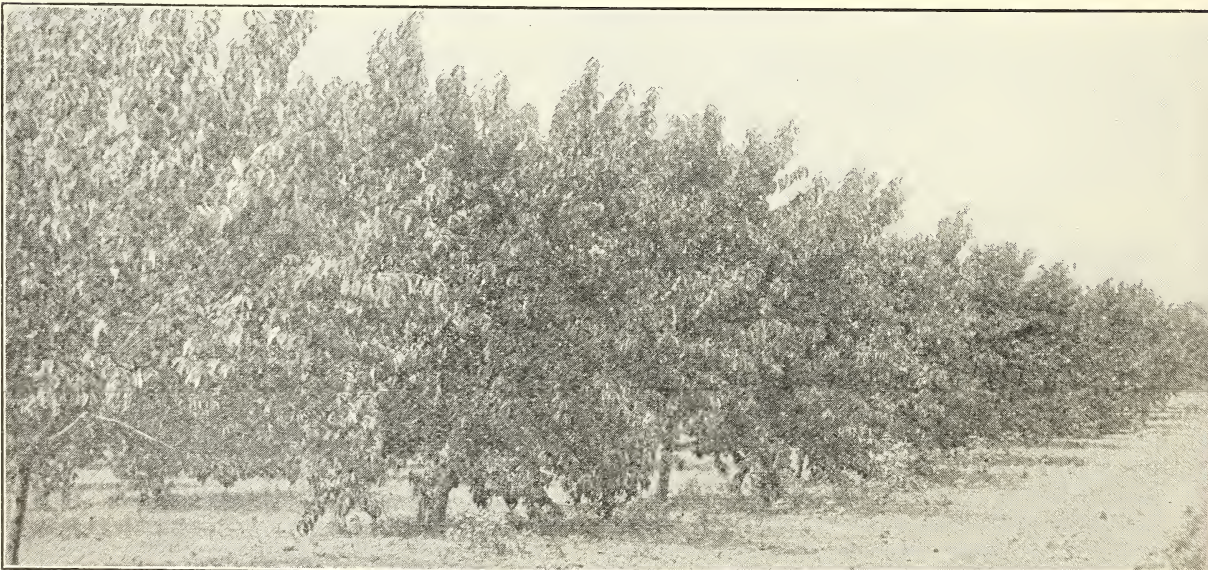
Late Crawford—Fruit is of the largest size; skin yellow or greenish-yellow, with dull red cheek; flesh yellow; productive and one of the finest late sorts. Last of Sept.



Picture of one of our blocks of 150,000 Peach trees taken in August, at which time they had about ten more weeks to grow. Budded on natural seed from the Mountains of North Carolina. Free from disease. Our guarantee to be absolutely **TRUE TO NAME**, on every order blank.

Woodlawn Golden—A new variety which we recommend for general culture. The fruit is large and highly colored; flesh is yellow, firm and flowing over with rich, finely flavored juice. The quality of no other Peach can be compared with this. Fine for canning as well as being the most desirable for eating from the hand. The tree is a strong grower and very productive. Perfect freestone. Ripens first of September.

Rochester—Is in a class by itself, because it is the only good sized, yellow freestone Peach of fine quality ready for market in the middle of August in the Northern States. The fruit is large, yellow, with a most attractive red blush; juicy and delicious and keeps well; an excellent shipper. Its greater sweetness over other Peaches requires only half the usual quantity of sugar in canning. The tree is a strong grower; early and regular bearer of big crops, and absolutely hardy; two weeks ahead of Early Crawford.



“Wood Quality” Trees planted by Mr. T. Merchant, Middleport, N. Y. Each tree yielded from five to eight bushels of fruit the sixth year after planting.



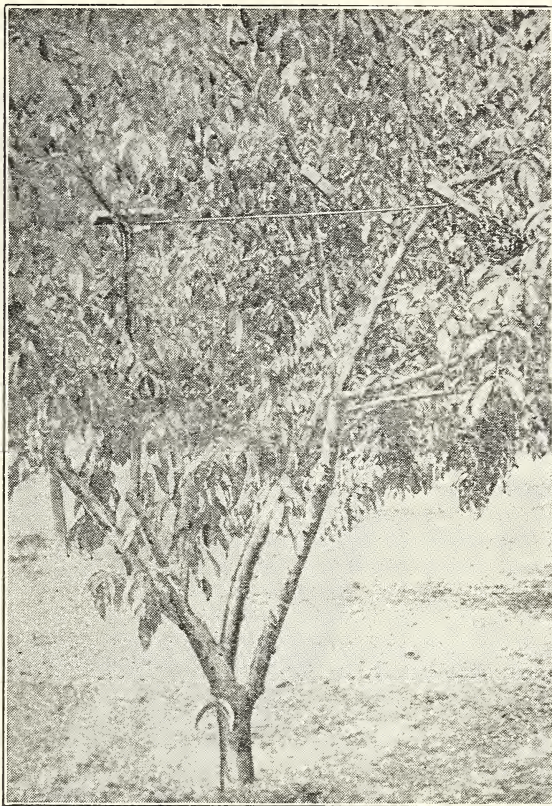
Branch of Elberta Peaches 10 days before they were picked.

Hale—In size it is one-third larger than the Elberta and is more highly colored. The skin is deep crimson, smooth, tight, and without fuzz. Flesh is golden-yellow, firm, and has a most delicious flavor. The pit separates easily from the flesh. It is exceptionally valuable as a commercial Peach, owing to its unusual keeping and shipping qualities. Will ship nearly as well as an Apple. Fruit ripens about five days before the Elberta, but it will hang on the tree longer. Your collection is incomplete without this variety.

Carman—Large size, like Elberta in shape, of a creamy white yellow, skin covered with deep blush, skin tough, enduring shipment, flesh tender, excellent flavor, very juicy, one of the hardiest and most popular early varieties. Carman is the best white fleshed Peach. Beautiful red cheek. Best of all is that Carman Peach is hardy in bud. Bears big crops after severe winters. Do not fail to plant Carman Peach.

Niagara—Fruit is a beautiful golden-yellow blushed with brilliant red. Resembles the Early Crawford very much, but is larger in size. The flavor is rich and piquant, reminding one of the very best Peaches he ever ate. We recommend this variety as one of the best for the garden.

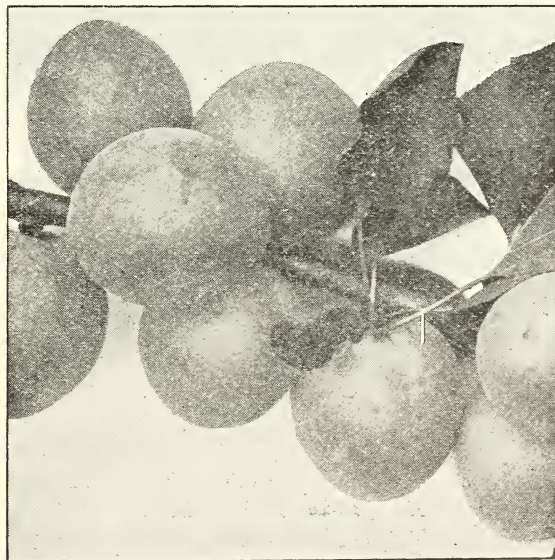
Champion—This is a very large variety; hardy and productive. Both the tree and the fruit buds have stood 18 degrees below zero and produced a full crop the following summer. Has a very fine flavor; is sweet, rich and juicy. The skin is creamy white with a red cheek and very handsome. Free-stone and a good shipper. Ripens last of August.



The above cut shows how to wire up a Peach tree to keep it from breaking down when heavily laden with fruit

Apricot Trees

Two Years XXX Grade, \$1.25 each
Two Years XX Grade, 1.00 each



Moorpark

Moorpark—One of the largest. Yellow with red cheek, firm, juicy and very productive. An old and dependable variety. August.



“DR. WORCESTER”
“The 20th Century Peach”

The DR. WORCESTER Peach is of a very large size, and the color is a beautiful golden yellow, overlaid with red. The flesh is yellow, firm and juicy, and the flavor, which is its chief merit, is rich and sweet. The skin is firm, making it a good shipper and keeper. The tree is hardy and a late bloomer, so late frosts seldom injure it, and it is a healthy, vigorous grower and good bearer. These qualities make the DR. WORCESTER Peach a most valuable commercial variety.

EVERYONE WHO HAS SEEN AND TASTED THIS PEACH WANTS MORE.

For the past two years we have refused several hundred orders for the Dr. Worcester Peach, and refunded several hundred dollars after we were sold out. **FIRST COME, FIRST SERVED.**

PRICES OF DR. WORCESTER PEACHES

	Each	Ten	Hundred
4 to 5 ft. XXX grade	\$1.00	\$8.50	\$75.00
3 to 4 ft. XX grade	.85	7.50	65.00
2 ½ to 3 ft. X grade	.75	6.50	50.00

5 trees at 10 rate

Mail size, 75c each; 3 for \$2.00

EXTRA LARGE SIZE TREES

\$1.25 each; \$10.00 per ten

We have the exclusive sale
 of “Dr. Worcester” Peach
 trees, and each tree or bundle
 of trees we sell has a special
 Guarantee Seal attached to it.

HISTORY OF THE DR. WORCESTER PEACH

In the fall of 1890, Dr. Worcester of Middletown, N. Y., planted a bed of choice Peach pits, which he had gathered from various sources. In 1892 he transplanted all the strongest seedlings, and when they started to bear in 1895, all but one were clingstones. One of the trees bore beautiful yellow and crimson Peaches of enormous size, which were perfect freestones.

In 1896 this tree was heavily loaded with large and beautiful fruit, which averaged from 8½ to 10 oz. each. Six of the largest Peaches weighed 3 lbs. 2½ ozs. Several of these Peaches were sent to well known horticulturists and nurserymen, who pronounced it a most wonderful Peach.

In 1898 Dr. Worcester sent a basket of his seedling Peaches to the American Institute of New York, and they were so well pleased with them that they sent him a Certificate of Merit.

Up to this time Dr. Worcester had only the original tree. In August 1899, he budded several trees to make a thorough test, and continued to bud some each year thereafter until 1917, when he made a contract with Mr. Allen L. Wood of the Woodlawn Nurseries to bud and sell these trees. It proved to be such a wonderful Peach that Mr. Wood purchased the exclusive right to same.

Rochester, N. Y., Oct. 16

Dear Sir—The sample of your new Peach, "Dr. Worcester," which you showed us and which we sampled in our office recently, seems to be a fine acquisition to the list of Peaches. It was of good size, and the flesh was yellow and firm, indicating that it would stand shipping. It was also a perfect freestone. From all we hear, we think that it will be a Peach worth while cultivating. Yours truly,

C. M. HOOKER & SONS, Fruit Growers.

Brighton Station, Rochester, N. Y. Oct. 11

Dear Sir—Your letter of the 9th and the "Dr. Worcester" Peaches reached me yesterday. I think they are the finest Peaches I ever tasted. They are very solid and firm and should be a good shipping Peach. Their flavor is far superior to the Elberta. I hope some day to be able to see this Peach in bearing, as it looks mighty good to me. Thanking you for the sample, I remain

Yours very truly,

EMERSON A. BABCOCK, Fruit Grower.

Penn Yan, N. Y., Oct. 10

Dear Mr. Wood—I have sampled the Peach and pronounce it very good. It is of much better quality than the Elberta. Thanking you for letting me sample it, I remain, Very truly yours,

E. C. GILLET, Sec'y,
N. Y. S. Fruit Growers' Asso.

Newport, Del., Feb. 8, 1921

Dear Sirs—Enclosed find my check for \$10.00. Kindly send me:

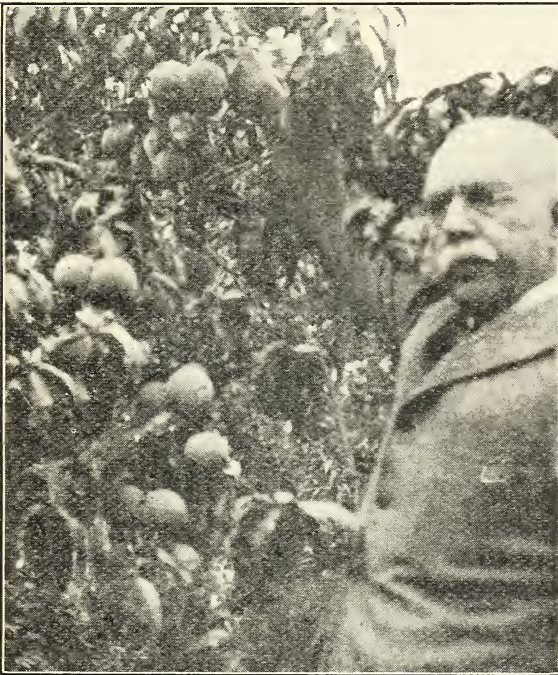
5 Ohio Beauty Apples, X grade.

5 Dr. Worcester Peaches.

The first trees of the Dr. Worcester Peach that I bought from you bore for the first time this fall. I never saw such Peaches.

(Signed) MRS. ANNA JUSTIS.

(Mrs. Justis bought her Peach trees in the spring of 1919.)



A 16-YEAR-OLD DR. WORCESTER PEACH TREE

This Photograph of Dr. Worcester and one of his famous Peach trees was taken about a month before the fruit was fully ripened.

San Francisco, Cal., Oct. 18

Dr. J. W. Worcester,
Middletown, N. Y.

My Dear Doctor—I received the sample of "Dr. Worcester" Peaches just before leaving the East for here. I divided with some of my neighbors, and we all pronounced them the most delicious Peaches we ever had the pleasure of tasting. Surely someone ought to bud and sell the trees. Thanking you, I am

Yours very truly,

CHAS. G. PORTER.

Mr. Porter is Superintendent of the Fruit Dept. at the New York State Fairs.



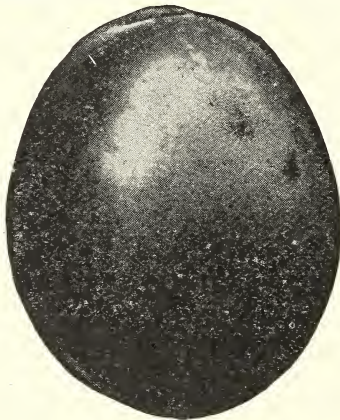
One of our large blocks of Wood's Quality Plum Trees Budded on French Plum Stock

Owing to the scarcity of Plum seedlings, most of the Plum trees for this season's planting have been grown on Peach roots. Plum trees grown on Peach roots are not as hardy nor nearly so desirable as those grown on Plum roots. We were fortunate in having a good supply of Plum seedlings and all our Plum trees are on Plum roots. They are worth considerably more than trees grown on Peach roots.

WOOD'S QUALITY PLUM TREES

BUDED ON FRENCH PLUM STOCK

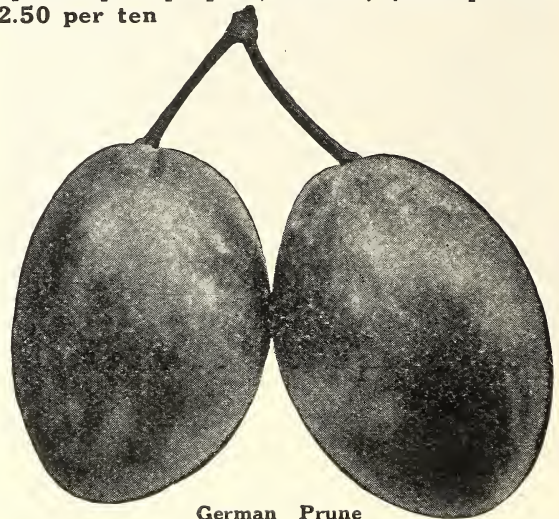
	Height	Caliper	Grade	Each	Ten
Largest Size—2 Years—	6 to 7 ft.	3/4" and up	XXX	\$1.25	\$10.00
Medium Size—2 Years—	5 to 6 ft.	5/8" to 3/4"	XX	1.00	9.00
Smallest Size—2 Years—	4 to 5 ft.	1/2" to 5/8"	X	.75	6.50
P. Post Size—2 Years—First class trees by parcel post prepaid, 75c ea; \$6.50 per 10.					
Extra Large Size—3 Years—\$1.50 each; \$12.50 per ten					



Lombard

Lombard—A great favorite, because it is a wonderfully early bearer, a hardy, strong grower. It is a good variety to eat out of hand and also to can. Lombard is a handsome reddish Plum. Flesh is yellow, juicy and pleasant. It can be relied on for a crop when other varieties fail. Ripens in August.

Shipper's Pride—This wonderful Plum originated in New York State. It is very hardy and productive. Fruit is of large size and nearly round; color handsome dark purple; flesh is fine, juicy and sweet; excellent for canning and an unusually good shipper. A great market Plum. Ripens from first to middle of September.



German Prune

German Prune—A valuable Plum for dessert, but most esteemed for market and drying or preserving. Fruit long, oval, purple with a thick bloom; flesh firm, sweet and pleasant, separating freely from the stone; moderate growth. A great favorite. A sure market for all you have to sell at very profitable prices.

Felleberg Prune—Dark purple with a dark blue bloom; size medium; oval, pointed and tapering. Flesh juicy and delicious; fine for drying. In the West it is grown by the thousands of acres and shipped by the trainload to all markets of the world.



Shropshire Damson

Shropshire Damson—An English variety of Plum and very fine for preserving. It is a roundish blue fruit and always sells well; the tree is hardy and very prolific. Fruit ripens in October.

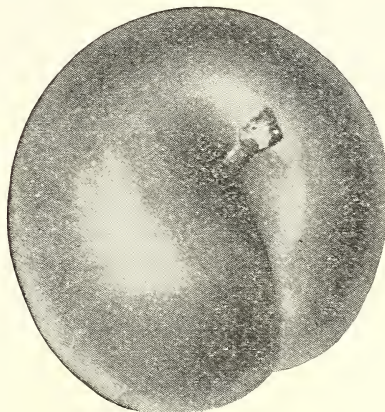


Bradshaw

Bradshaw—This is a very large, dark violet-red Plum, very juicy and good. The quality of Bradshaw is very fine and is very popular wherever planted. The tree is erect, vigorous, hardy and very productive. One of the finest for market and canning purposes. The fruit ripens about twelve days after Abundance.

Abundance—One of the most popular of all Japanese varieties. It is favorable everywhere and should be in every collection. The fruit is large, showy and beautiful. It has a bright cherry-red color. The flesh is yellow, firm, juicy, sweet and very delicious. Stone is small and parts freely from the flesh. Its season is very early, which adds greatly to its value. The tree is vigorous and exceedingly productive. It is liable to overbear unless thinned.

Red June Japan Plum—This variety is just as productive as Abundance; fruit medium to large, deep vermilion-red with handsome bloom, very showy; flesh light lemon-yellow, slightly sub-acid. It is of immense value for its very early ripening, and its quality excels all of the early Japanese varieties; it is exceptionally free from rot. Tree comes into bearing in two or three years. Ripens last of July or early in August.



Burbank

Burbank—This variety is very much like the Abundance, except that it is much deeper in color and ripens from ten to fourteen days later. It is one of the most handsome Plums on the market, and always finds a ready sale. The fruit is large, reddish-purple; flesh yellow, juicy and good. Tree is very hardy and vigorous. It will withstand the frost better than most varieties. August.

We grow our own trees and plants—

“Buy direct from the grower”

We have no agents selling our stock—

“We save you agents’ commissions”

We have no accounts, and you do not have to pay for others’ bad debts.

We guarantee our stock to be true to name. See order blank.

SPECIAL WHOLESALE BARGAINS IN FRUIT TREES BY PREPAID PARCEL POST

Every year we receive several hundred letters from customers, inquiring whether we have any fruit trees to offer at a bargain.

Many planters prefer to plant the smaller size trees, as it reduces the cost of investment. In all cases they report success in planting this grade, as the fibers of the roots are small and readily adhere to the ground and make a rapid and very satisfactory growth the first year. A few buyers of fruit trees have an idea that the smaller size trees are poor trees and not fit to plant. This is a mistake, as each one of our smaller size trees is a good, clean, straight, healthy little tree and is first class in every respect, according to grade. These small trees are well-rooted and matured, and we recommend them most highly to the planter. We have a good stock of Apple, Pear, Peach, Cherry and Plum trees, and offer them at these special low wholesale prices:

BARGAIN SIZES

APPLES

Prices of all Varieties of Apple trees by Prepaid Parcel Post
2 Years, 3 ft. to 4 ft., 3/8 in. to 1/2 in. Cal., 40c ea.; \$3.50 per 10; \$25.00 per 100

Baldwin	Grimes Golden	R. I. Greening	Wagner
Ben Davis	Hyslop Crab	Red Astrachan	Winter Banana
Delicious	Jonathan	Rome Beauty	Woodlawn Golden
Duchess	King	Stayman Winesap	Yellow Transparent
Early Harvest	McIntosh	Sweet Bough	York Imperial
Fameuse	Northern Spy	Tolman Sweet	Wealthy
Fall Pippin	N. W. Greening	Transcendent Crab	

PEACHES

Prices of all varieties of Peach trees by Prepaid Parcel Post
1 Year, 2 ft. to 3 ft., 3/8 in. and up Cal., 35c ea.; \$3.00 per 10; \$20.00 per 100

Elberta	Woodlawn Golden	Champion	Carman
Early Crawford	Late Crawford	Hale	Niagara

CHERRIES

Prices of all varieties of Sour Cherry trees by Prepaid Parcel Post
2 Years, 3 ft. to 4 ft., 3/8 in. to 1/2 in. Cal., 50c ea.; \$4.50 per 10; \$40.00 per 100

Montmorency	Early Richmond	English Morello
-------------	----------------	-----------------

STANDARD PEARS

Prices of all varieties of Pear trees by Prepaid Parcel Post
2 Years, 3 ft. to 4 ft., 3/8 in. to 1/2 in. Cal., 70c ea.; \$6.50 per 10; \$50.00 per 100

Bartlett	Clapp's Favorite	Beurre d'Anjou
Kieffer	Seckel	Sheldon

DWARF PEARS

Prices of all varieties of Dwarf Pear trees by Prepaid Parcel Post
2 Years, 2 ft. to 3 ft., 3/8 in. to 1/2 in. Cal., 40c ea.; \$3.50 per 10; \$30.00 per 100

Beurre d'Anjou	Bartlett	Duchess
Clapp's Favorite	Seckel	

PLUMS

Prices of all varieties of Plum trees by Prepaid Parcel Post
2 Years, 3 ft. to 4 ft., 3/8 in. to 1/2 in. Cal., 50c ea.; \$4.50 per 10; \$40.00 per 100

Abundance	Felleberg	Lombard
Bradshaw	German Prune	Red June
Burbank	Green Gage	Shipper's Pride
Shropshire Damson		

WOOD'S GRAPE VINES

ARE TWO YEARS OLD, EXTRA STRONG

Every city and country garden should have a dozen or more Grape vines. They can be trained up the side of any building or along the garden fences, occupying but little room and furnishing an abundance of the healthiest fruit.



Worden

Lucile

Niagara

Concord

FOUR BEST STANDARD GRAPE VINES

Price of Two-Year-Old Vines; (except otherwise noted):

35c each; \$3.00 per 10; \$20.00 per 100

If sent by Parcel Post add 5c each; 25c per 10

Concord—This is the leading black variety and the most widely grown Grape on this continent. Fruit ripens in mid-season with the Niagara. Grape juice is made almost entirely from Concords, and owing to the productiveness of this variety it can be produced so cheaply that no other Grape can compete with it, either for this purpose or as a market variety.

25c each; \$2.00 per 10; \$15.00 per 100

Lucile—Early red variety, ripening between Moore's Early and Worden. It is a vigorous grower and an enormous bearer, which is equal to the Concord or Niagara in this respect; ripens up all its wood to the tips, under a load of fruit where the Niagara would not ripen over one-half. In vigor, health, hardiness and productiveness this variety is not surpassed by any other. It has never been known to winter kill in the Grape region. It will ripen in Maine, also in the Northwest, where other varieties freeze back. Free from fungus; bunches and berries medium to large; skin thin, but tough; bright in color; good shipper and quality is good, with an exceedingly pleasing flavor. Best red Grape we know of.

35c each; \$3.00 per 10; \$25.00 per 100

Moore's Early—Bunch medium; berry large, round, black, with a heavy blue bloom; flesh pulpy and of medium quality; hardy and moderately prolific. Its large size and earliness render it desirable.

35c each; \$3.00 per 10; \$25.00 per 100

Agawam—A dark red Grape with fine flavor. Large bunch and berry, rich, sweet and aromatic; strong grower and very productive.

Worden—Bunch large, compact, handsome; berries large—larger than those of the Concord. It ripens a few days earlier and is superior to it in flavor. Destined to become very popular for the vineyard and garden.

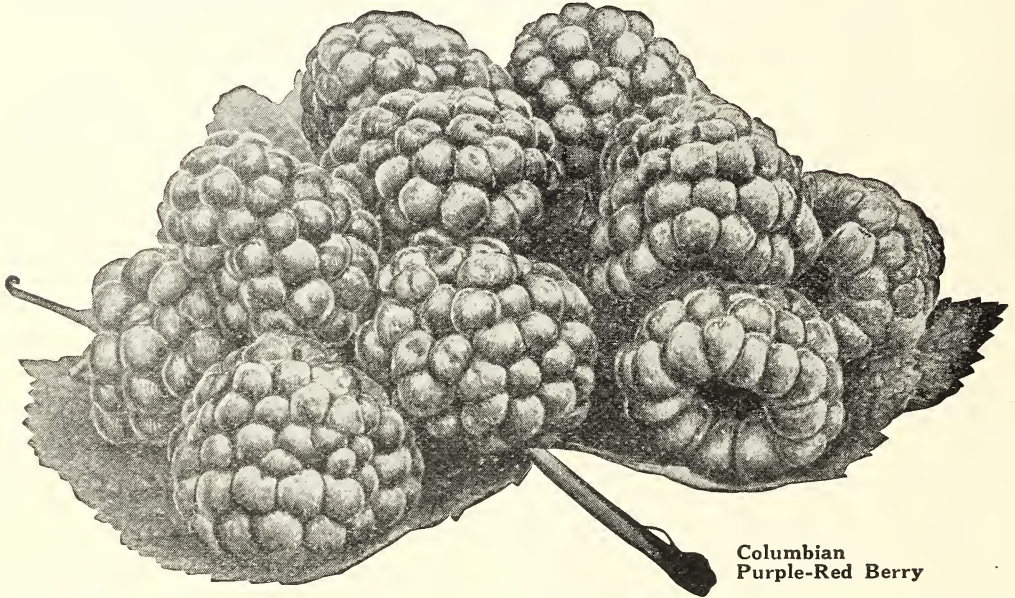
Niagara—This is the leading American white Grape, holding the rank among the Grapes of this color that Concord does among the black varieties. Bunch very large and handsome, often shouldered, compact; berries large, round; skin thin, tough, does not crack and carries well; has not much pulp when fully ripe; melting, sweet. The Niagara makes a handsome and showy fruit, and for this reason sells very readily on the market, commanding a good price.



ST. REGIS EVERBEARING RASPBERRY
 Awarded a Certificate of Merit by American
 Institute of New York

St. Regis—This promises to be the most valuable addition to the list of Red Raspberries. It succeeds upon all soils, whether light and sandy or heavy clay. Ripe fruit from June to November. The only variety known that gives a crop of fruit the same year they are planted, and two crops a year thereafter. Plants that are set early in the spring will give a small crop of fruit the fall following, and the next spring a big crop equaling that of any Red Raspberry known. In size, quantity and quality, to say nothing of its fall-bearing qualities, it is ahead of anything we know of. About the middle of August it commences to set fruit on the young canes, and bears continuously from then until frost. The berries are large, beautiful and attractive.

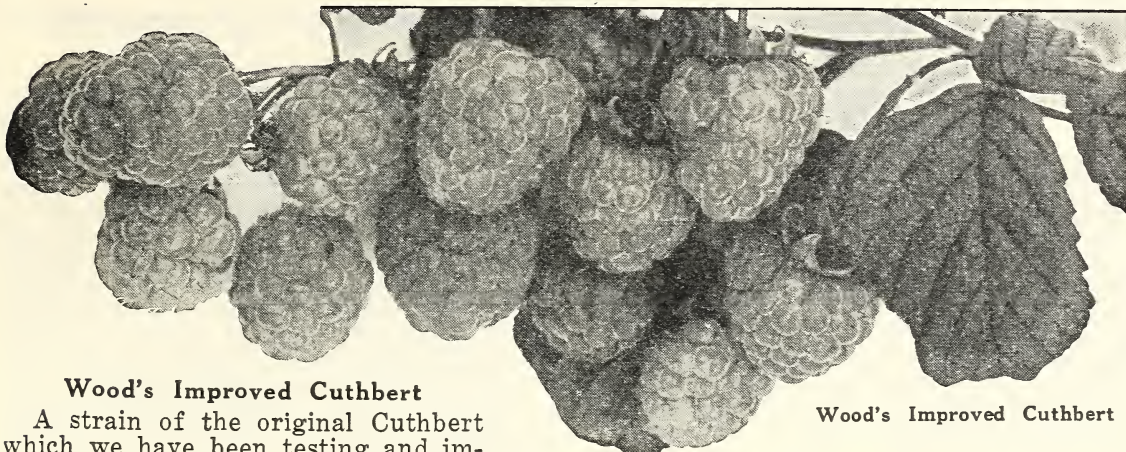
Price—2 for 25c; \$1.00 per 10; 25 for \$1.50; \$4.00 per 100; \$25.00 per 1000
 If sent by Parcel Post add 10c per 10; 20c per 25



**Columbian
 Purple-Red Berry**

Columbian—Very large, often an inch in diameter; dark red, bordering on purple, adheres firmly to stem and will dry on the bush if not picked; of rich, sprightly flavor, the best for canning or evaporating, and probably the most productive of all Raspberries. A most vigorous grower, canes ten to fifteen feet in length and often over an inch in diameter, strong and woody, its roots spreading and penetrating the soil to a great depth, thus enabling it to resist drought. It propagates from the tips and never suckers from the roots. It is very hardy, enduring 28 degrees below zero without injury.

Price—2 for 25c; \$1.00 per 10; 25 for \$1.50; \$4.00 per 100; \$35.00 per 1000
 If sent by Parcel Post add 10c per 10; 20c per 25



Wood's Improved Cuthbert

Wood's Improved Cuthbert

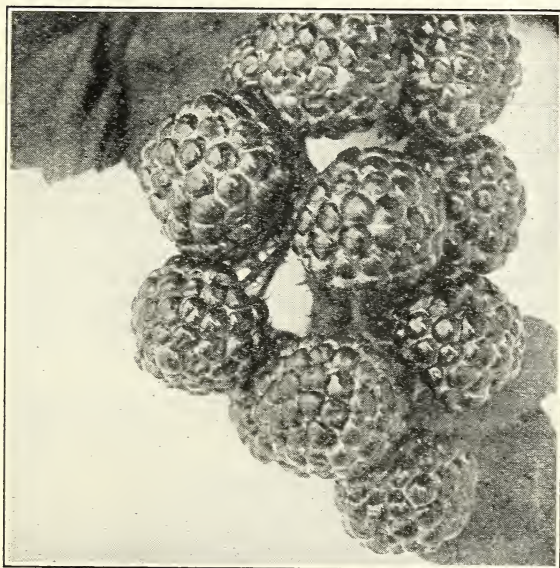
A strain of the original Cuthbert which we have been testing and improving for years. It is a strong grower, has healthy foliage, and is very productive if planted on good soil. Cuthbert is one of the old standard, reliable sorts that will give a good crop of large red ber-

ries that are firm and have a rich flavor. Of very fine quality; more largely grown than any other variety. We recommend it for either home use or field culture.

Price—2 for 25c; \$1.00 per 10; 25 for \$1.50; \$4.00 per 100; \$35.00 per 1000
If sent by Parcel Post add 10c per 10; 20c per 25

BLACK RASPBERRIES

BLACKBERRIES



Plum Farmer

Plum Farmer—Has been thoroughly tested in Western New York, where it is a great favorite for market and home use. The fruit is very large, often measuring an inch in diameter. Brings the highest prices on the market.

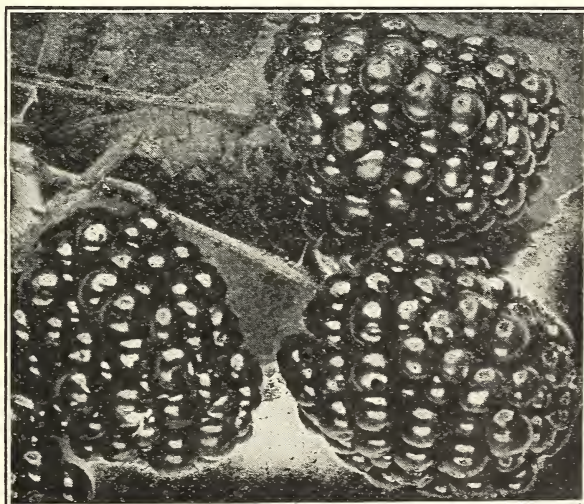
Price—2 for 25c; \$1.00 per 10; 25 for \$1.50; \$4.00 per 100; \$35.00 per 1000.

Black Diamond—One of the best for home and market use. For drying and evaporating it excels all others. The fruit is large, sweet and excellent.

Price—2 for 25c; \$1.00 per 10; 25 for \$1.50; \$4.00 per 100; \$35.00 per 1000.
If sent by Parcel Post add 10c per 10; 20c per 25.

Blowers—Giant, upright, mammoth grower, is very hardy and enormously productive. The season of ripening is from the middle of July until frost, with the bulk of the crop maturing in August. A single plant produced over 2,600 berries, and from three-quarters of an acre of land 112 bushels of fruit were picked.

Price—2 for 35c; \$1.25 per 10; 25 for \$2.00; \$5.00 per 100; \$40.00 per 1000.
If sent by Parcel Post add 10c per 10; 20c per 25.



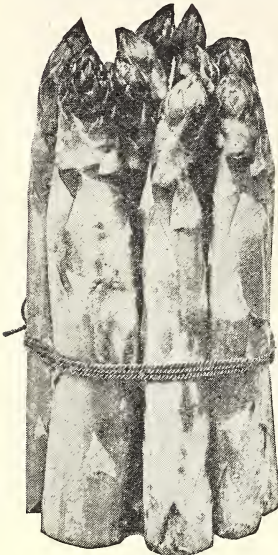
Eldorado

Eldorado—A valuable variety; medium size, jet black, melting, sweet and rich; hardy and very productive.

Price—2 for 35c; \$1.25 per 10; 25 for \$2.00; \$5.00 per 100; \$40.00 per 1000.
If sent by Parcel Post add 10c per 10; 20c per 25.

ASPARAGUS (2 years old)

To make a good Asparagus bed, prepare a plot of fine, loamy soil, to which has been added a liberal dressing of good manure. Set the plants 12 inches apart in the row and the rows 20 inches apart.



Barr's Mammoth

Palmetto—An early and great yielder and very even and regular in growth. It has been tested both North and South and has proved entirely successful in every way.

Price, 50c per 10; \$1.00 per 25; \$2.50 per 100; \$15.00 per 1000.

If sent by Parcel Post add 5c per 10; 15c per 50; 25c per 100.

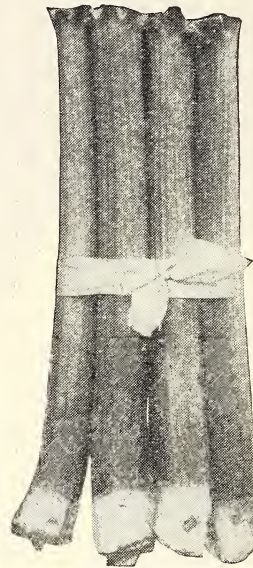
Barr's Mammoth—Robust and vigorous and throws large shoots which remain white above ground as long as they are fit for cutting.

Conover's Colossal—This variety is remarkably tender and finely flavored.

RHUBARB (PIEPLANT)

Two-year-old plants

Strawberry Rhubarb all the year



Wood's Strawberry Rhubarb

You can have Early Strawberry Rhubarb throughout the entire year. Cut stalks of young Rhubarb into small pieces. Put these into fruit jars. Fill jar with cold water and seal up tightly. This will keep you in fresh Early Strawberry Rhubarb the entire year.

There are a number of different ways of serving Early Strawberry Rhubarb—pies, cakes, sauces, jellies, puddings, etc.

Price of Two-year-old plants 25c each; \$2.00 per 10; \$15.00 per 100.

If sent by Parcel Post add 5c each; 25c per 10.

CURRENTS

PRICE OF 2-YEAR-OLD BUSHES

Except otherwise noted

35c each; \$2.50 per 10; \$20.00 per 100

If sent by Parcel Post add 5c each;

25c per 10.

Wood's Improved Cherry—A strain of the original Cherry which we have greatly improved upon. It is larger, has better bunches, and is a stronger grower. Fruit is large, deep red and sub-acid.

Wood's Giant Black—This is the largest and finest black variety known. Much valued for jellies.

Price, 40c each; \$3.00 per 10; \$25.00 per 100.

Perfection—Won the Barry \$50.00 Gold Medal of the Western New York Horticultural Society, the Pan-American Exposition Medal, and the Gold Medal at the St. Louis Exposition of 1904. The color is a beautiful bright red; clusters long; large size berries.

Price, 40c each; \$3.00 per 10; \$25.00 per 100.

Red Cross—Very popular owing to its sweetness and fine flavor. New York Experimental Station says: "Red Cross is large and productive. The masses of fruit are so dense as to completely hide the bearing canes from view."

Fay's Prolific—Less acid than Cherry; bunch large, berries medium. A remarkable cropper.

STRAWBERRIES

Price, 50c per 12; \$1.00 per 25; \$2.00 per 100; \$10.00 per 1000

By mail—55c per 12; \$1.10 per 25; \$2.25 per 100

Monroe—We are proud to say that we introduced the "MONROE," which has made a record for itself. The berry is deep red, not red in spots, as on some varieties, but red all around, making it a very handsome fruit. It is finely grained, very firm and red to the core. The flavor of the "MONROE" surpasses that of any other Strawberry.

Parson's Beauty—A good grower and an immense cropper of large, solid berries of good form, bright red and firm, but its chief point of merit is its enormous crop of fruit.

GOOSEBERRIES

PRICE OF 2-YEAR-OLD BUSHES

35c each; \$3.00 per 10; \$25.00 per 100

If sent by Parcel Post add 5c each; 25c per 10.

Pearl—This variety bears a great resemblance to the Downing, but is superior in size and quality. It is very hardy; free from mildew and the most productive of all varieties.

Josselyn—Fruit red, large size, smooth, of best quality. Has been tested over a wide extent of territory by the side of all the leading varieties, and so far is free from mildew, both in leaf and fruit. A wonderful cropper, with bright, clean, healthy foliage.

NEW YORK STATE GROWN NUT TREES



English Walnut

English Walnut—An exceedingly handsome tree for the lawn. It produces large crops of thin shelled, delicious Nuts which are always in demand at good prices. The English Walnut can be grown in the Eastern and Northern States, as well as in California and the South. There are several large orchards of English Walnuts in the vicinity of Rochester, N. Y., which produce good crops every year. We have three English Walnut trees on one of our farms, which are over 40 years old.

3 to 4 ft., \$1.75 each; 4 to 5 ft., \$2.00 each;
5 to 6 ft., \$3.00 each



Butternut

Butternut — Produces large, handsome, elongated Nuts with rich, sweet, oily kernel; very nutritious. Cultivation increases the size of the Nuts. The tree grows rapidly and yields large crops in a few years.

4 to 5 ft., \$1.00 each; \$9.00 per 10.



Japan Walnuts picked from a six-year-old tree

Japan Walnut—A choice improved variety, grows with great vigor, forming a handsome head without pruning; has withstood a temperature of 20 degrees below zero without injury. The shell is a little thicker than that of the English Walnut, which it resembles in a general way; kernels are meaty, delicate and can be removed entirely. Tree begins to bear when 2 or 3 years old.

3 to 4 ft., \$1.00 each; \$9.00 per 10



Black Walnut

Black Walnut—Bears a heavy crop of large, round Nuts of excellent quality. They are much relished and bring a good price on the market. The tree is a rapid grower, attaining a large size and majestic form; has beautiful foliage. Very valuable for its timber, which enters largely into the manufacture of fine furniture and cabinet ware.

5 to 6 ft., \$1.00 each; \$9.00 per 10

Marion, Ind., March 20, 1922.

Mr. Allen L. Wood.

Dear Sir—Just a line to inform you my stock arrived in the finest condition March 19th. Must say that I am most highly pleased with both your prompt service and splendid plants. You will receive another order from me next spring for shade trees, roses, and ornamental shrubs.

Yours truly, (Signed) GEO. STEWART.

ORNAMENTAL TREES

WELL-KEPT grounds, which necessarily include fine Shade Trees, flowering Shrubs, Vines and Roses, are naturally a great source of pleasure to a property owner. They also greatly enhance the value of property. A relatively small amount invested in ornamentals will bring a big return should you wish to dispose of your property. Nor does it require a big outlay of money to make your property beautiful by such ornamentation. The Trees and Shrubs, etc., of course should not be planted haphazardly. Great care should be exercised in the planting of Shade Trees. All planting ought to be done with reference to the character and position of the house, care being taken not to obstruct sightly views, but unsightly views should be screened.



Note the arrangement of the Ornamental Trees. Does it not make the place look more homelike?

MAPLE TREES



Silver-Leaved Maples

A—Denotes trees which attain 50-70 ft. in height
 B—Denotes trees which attain 20-40 ft. in height
 C—Denotes trees which attain 8-15 ft. in height

Maple, Silver-Leaved or Soft Maple (A)—This is a very beautiful ornamental tree and is in great demand for street, lawn and park planting. It is one of the easiest trees to transplant and a remarkably fast grower, thrives equally well in well drained or low, swampy locations. The foliage is of an attractive, silvery color.

	Each	Ten
8 to 10 ft. Extra good	\$1.50	\$14.00
10 to 12 ft. Extra good	2.00	18.00
Extra large	2.50	22.50

Maple, Sugar or Rock (A)—A native tree valuable for its production of sugar and wood. Very stately in form, rapid grower and has fine foliage. Valuable ornamental variety.

8 to 10 ft., \$1.50 each; \$14.00 per 10
 10 to 12 ft., \$2.00 each; \$18.00 per 10.



Avenue of Norway Maples

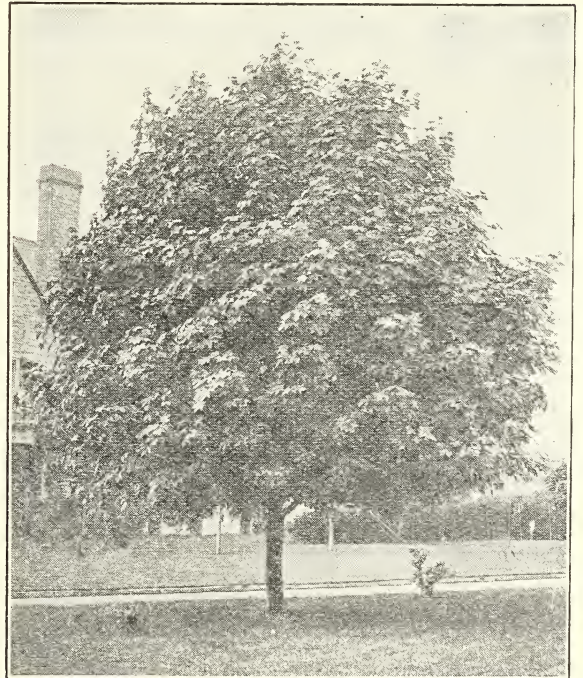
Norway Maple trees are perhaps the most important feature in the making of a proper planting for a beautiful street. They are recommended by the Shade Tree Commissioners for street and park planting.

Maple, Norway (A)—The compact, vigorous nature of this tree renders it desirable for the street or lawn. The growth is fairly fast, the head massive and rounded, with broad, rich green foliage. This variety is highly recommended by the Shade Tree Commissioners for street and park planting.

	Each	Ten
8 to 10 ft.....	\$2.00	\$18.00
10 to 12 ft.....	2.50	22.50
Extra 2 to 2½ in. Caliper	4.00	38.00
Extra 2½ to 3 in. Caliper	5.00	45.00

Maple, Ash-Leaved or Box Elder (B)—A fine rapid growing variety, with handsome, light green foliage and spreading head; very hardy; desirable for street planting and succeeds in many sections where other varieties do not thrive.

8 to 10 ft....	\$1.50 each;	\$14.00 per ten
10 to 12 ft....	2.00 each;	18.00 per ten



NORWAY MAPLE
A beautiful tree for the lawn

Woodlawn Nurseries:
Gentlemen:

West Hoboken, N. J.

I received the trees in first class condition and will say they are the best lot of trees I have ever received.

Your packing cannot be excelled and the trees are just what you claim them to be in your catalog. I also wish to state that the fruit trees I bought from you several years ago are bearing fruit.

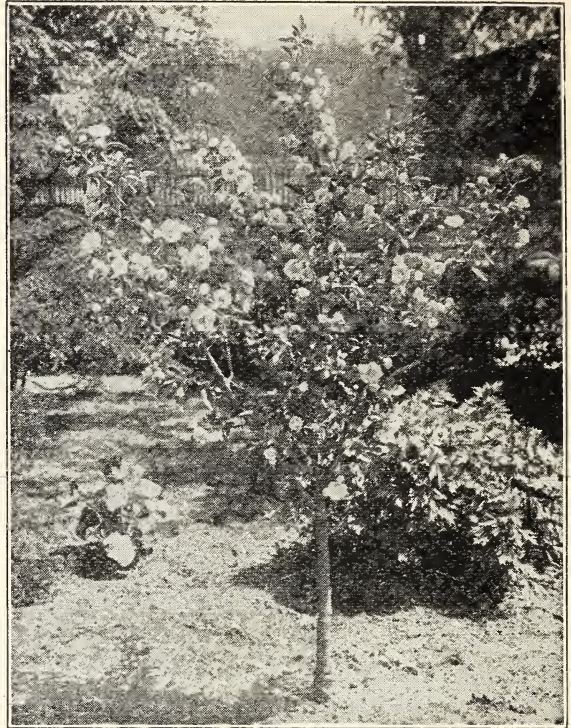
(Signed) **CHAS. F. BOMAN.**



Wier's Cut-Leaved Maple

Maple Wier's Cut-Leaved (A)—One of the most remarkable and beautiful trees, with cut or dissected foliage. Its growth is rapid, shoots slender and drooping, giving it a habit almost as graceful as the cut-leaved Birch.

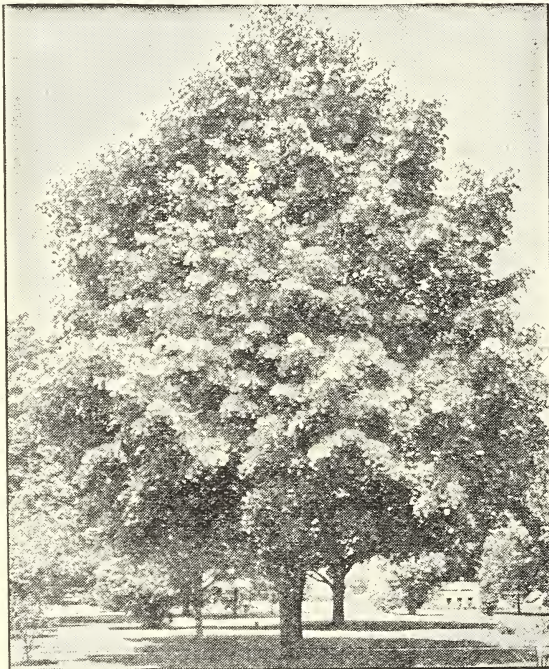
An interesting and attractive lawn tree.
6 to 7 ft., \$1.50 each



Bechtel's Double-Flowering Crab

Bechtel's Double-Flowering Crab (C)—One of the most beautiful of the many fine varieties of flowering Crabs. Tree medium size, covered in early spring with large, double, fragrant flowers of a delicate pink color. From a distance they have the appearance of roses.

2 to 3 ft., \$1.00 each; 3 to 4 ft., \$1.25 each



American Linden or Basswood

Linden, American (B)—Of unusual stately beauty. Foliage is luxuriant and the curious cream colored flowers have a delightful fragrance. Blooms in July. Growth is rapid and upright.

8 to 10 ft., \$2.50 ea.; 10 to 12 ft., \$3.00 ea.



Oriental Plane

Oriental Plane (A)—A well known tree. Extensively used for street and park planting, especially in cities where there is much smoke.

	Each	Ten	Hundred
8 to 10 ft.....	\$1.50	\$12.00	\$100.00

Thorn, Paul's New Double - Flowering (C)—One of the most beautiful ornamental trees. Dense low grower, occupying but little space. Has blossoms of bright carmine color in May and June.

4 to 5 ft., \$1.50 each.

Mountain Ash (B)—A favorite; erect growing tree of medium size, producing white flowers early in the spring, followed by clusters of bright scarlet berries which remain on the tree through the winter.

8 to 10 ft., \$2.00 each

Mulberry, Downing (B)—Berries very large, black and of excellent quality. Should be in every garden. Very valuable when planted near a Cherry orchard, as the birds will eat this fruit instead of the Cherries.

5 to 6 ft., \$1.00 each

Mulberry, Russian (B)—A hardy variety. Tree is a rapid grower; foliage is abundant.

7 to 8 ft., \$1.00 each; \$8.50 per 10



Lombardy Poplar

Poplar, Lombardy (A)—Well known for its erect, rapid growth and commanding form. Very desirable on large grounds or along roads, to break the average heights and forms of other trees. May be planted out for a screen to hide unsightly views, or for a windbreak.

	Each	Ten	Hundred
8 to 10 ft.....	\$.85	\$7.50	\$60.00
10 to 12 ft.....	1.00	8.50	70.00

Poplar, Carolina (A)—Remarkably rapid, luxuriant grower. Very large leaves, glossy, deep green. Valuable where shade is desired quickly. Useful for planting as a screen to hide unsightly buildings or as a windbreak for an orchard or garden.

	Each	Ten	Hundred
8 to 10 ft.....	\$.85	\$6.00	\$50.00
10 to 12 ft.....	1.00	8.00	60.00



Purple-Leaved Plum (Prunus Pissardi)

Plum, Purple-Leaved (Prunus Pissardi) (B)—The finest purple-leaved small tree of recent introduction. The young branches are a very dark purple; the leaves when young are lustrous crimson, changing to dark purple, and retain this beautiful tint till they drop late in autumn.

4 to 5 ft., \$1.50 each



American Elm, Finest Street and Shade Tree

Elm, American (A)—The Elms are so well known that it is unnecessary to refer to their beauty and value for ornamental planting. We grow the American on an extensive scale for street and park planting.

	Each	Ten
8 to 10 ft.....	\$1.50	\$12.00
10 to 12 ft.....	2.00	18.00



Camperdown Elm

Elm, Camperdown (Weeping Elm) (C)—One of the most graceful of all weeping trees, having large, luxuriant and deep green foliage; well adapted for planting on lawns or in parks or cemeteries; very desirable. A rapid grower.

6 to 8 feet, \$2.50 each



Tea's Weeping Mulberry

Mulberry, Tea's Weeping (C)—One of the finest, most graceful and satisfactory of weeping trees. Umbrella shaped head, with slender, willowy branches drooping to the ground. It has beautiful, glossy foliage, handsomely cut or divided into lobes. Perfectly hardy. **\$2.50 each.**

Willow, Babylonica (A)—Well known, weeping variety; forms a large, round-headed, graceful tree. It does not require much attention and succeeds well in rather dry soil. Very desirable.

8 to 10 feet..... \$1.50 each; \$12.50 per ten



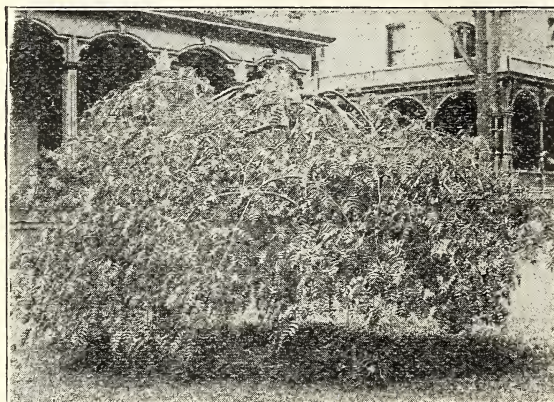
Catalpa, Bungeii each side of walk

Catalpa, Bungeii (Umbrella Catalpa) (C)—Grafted on stems 6 to 8 ft. high, it makes an umbrella-shaped top without pruning; perfectly hardy. Leaves large, glossy, heart-shaped, deep green. One of the most unique trees; desirable for lawn, park and cemetery planting or for each side of a driveway.

Two-year heads, extra large, \$2.00 each

Catalpa, Speciosa (A)—This medium to large tree with its tropical-like foliage and its pyramids of white flowers is worthy of a place in every collection. It is very ornamental and is a valuable tree for the street or park.

8 to 10 feet, \$1.50 each

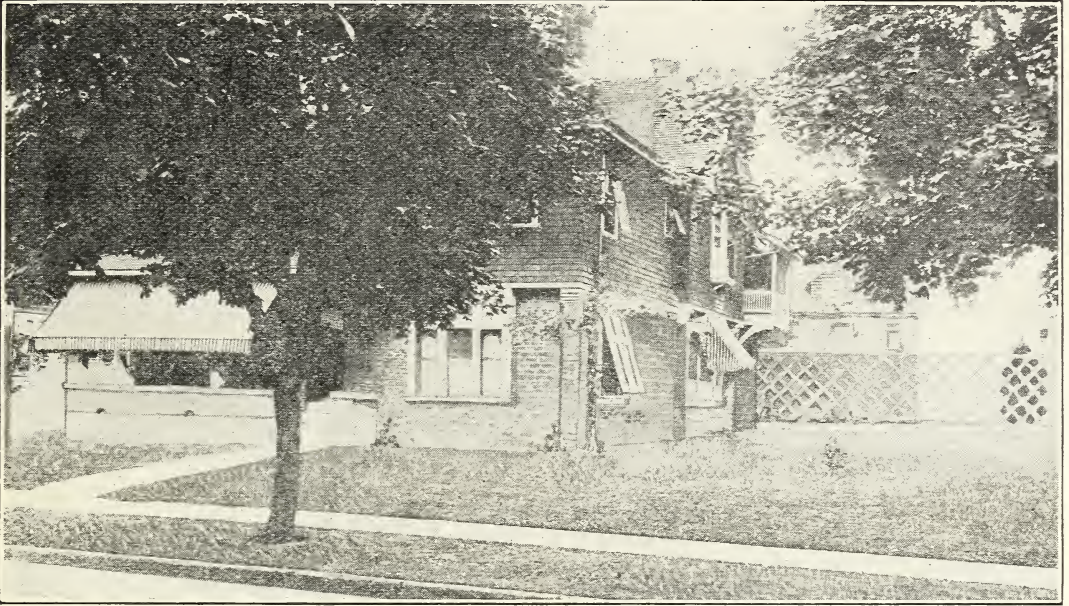


Weeping Mountain Ash

Weeping Mountain Ash (C)—A beautiful variety of rapid growth and decidedly pendulous and trailing habit; covered from July till winter with great clusters of bright scarlet berries. One of the most desirable lawn trees.

6 to 8 feet, \$2.50 each

SUGGESTIVE PLANTINGS

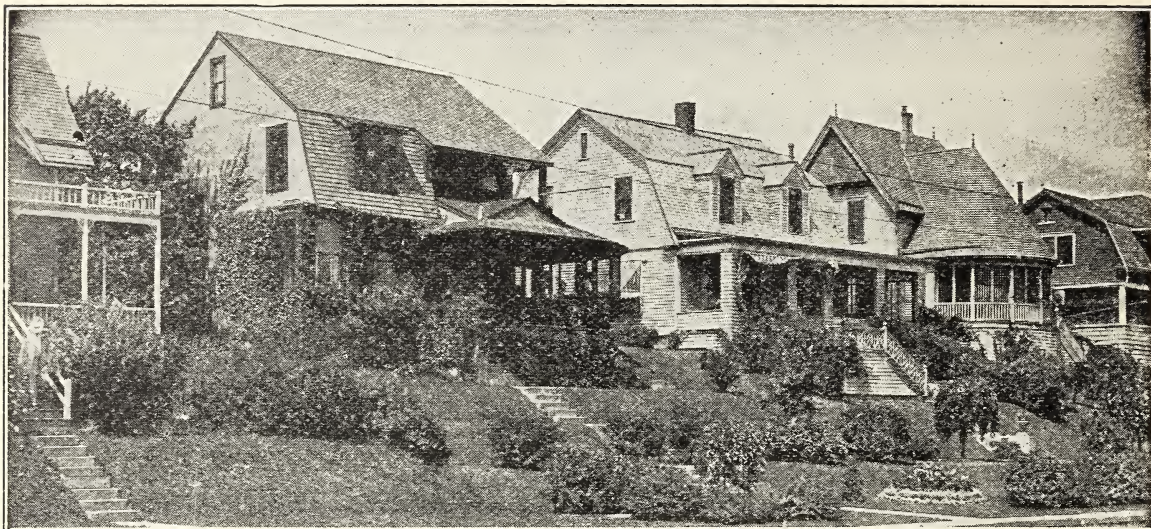


BEFORE—Note the bleak appearance

THE illustration on this page shows the common value of ornamental planting. In the lower view there is an exceptionally good illustration of how trees and shrubbery will beautify your place if properly grouped. People looking for homes will often pass one that is of fine architectural design, but barren of trees and shrubbery, and choose a place that is less pretentious with the grounds attractively planted. There can be no argument about the addition to the sale value of the property in dollars and cents, and a planting of trees, shrubs, vines and flowers should be considered a profitable investment, not an expense. Everyone who beautifies his own grounds not only adds to his own pleasure, but helps create a love of beauty in others in the community. We strongly urge you to consider the true value of shrub planting.



Two years after



The planting of Shrubbery, Trees, Vines, etc., makes a wonderful difference in the appearance of a place, as shown in the above picture

ORNAMENTAL SHRUBS

The Shrubs we grow are of the very choicest varieties; extra strong, two and three years old, from two to five feet in height, according to the variety, and will blossom the first season.

If sent by Parcel Post add 5c per Shrub

- D—Shrubs which attain 9 to 12 feet in height.
- E—Shrubs which attain 5 to 8 feet in height.
- F—Shrubs which attain 2 to 4 feet in height.



Althea, or Rose of Sharon

Althea, or Rose of Sharon (D)—The Altheas are fine, free-growing, flowering shrubs and are easy to cultivate. Very desirable on account of blooming in August and September, when scarcely any other tree or shrub is in blossom. We have the following varieties, at 50c each:

- Lady Stanley (Double Pink)
- Ardens (Double Purple)
- Boule de Feu (Double Red)
- Jeanne d'Arc (Double White)

Tree Althea—Same as bush, but grown in tree form, with single stem. Colors: Pink, Purple, Red, White.

3 to 4 ft., 75c each; 4 to 5 ft., \$1.00 each



Cornus are very attractive when planted singly, in groups or for massing, being distinguished for their elegant foliage

Cornus, Elegantissima (Variegated Leaf) (E)—One of the finest shrubs, with beautifully variegated foliage. 65c each.

Cornus Sanguinea (E)—A rapid growing shrub, very conspicuous and ornamental in winter when bark is red.

50c each.



Deutzia, Pride of Rochester

Deutzia, Pride of Rochester (E)—Very large, double, white flowers. It excels in size of flower, profuse bloom and vigorous growth; nearly a week earlier than *Deutzia Crenata*. 50c each.



“Everblooming Butterfly Bush” or “Summer Lilac”

Butterfly Bush, or Summer Lilac (E)—This beautiful shrub matures rapidly and produces beautiful lilac-colored flowers in profusion. Blossoms the entire summer; splendid for cutting. Should be cut back to the ground every spring. 50c each.

Barberry, Thunbergii (F)—A shrub of bright green foliage, which changes to brilliant red in the fall; bright red berries, which are conspicuous throughout the winter. Very hardy; has never been known to winter-kill. 50c each.

Barberry, Thunbergii, for Hedging—See page 51.



Deutzia, Gracilis

Deutzia, Gracilis (F)—A charming species of dwarf habit; flowers pure white. Fine for growing in front of taller shrubs. 50c each.

Deutzia, Candida (E)—Pure white flowers, very double. 50c each.

Deutzia, Lemoinei (F)—Pure white flowers, borne on stout branches of upright growth. Dwarf habit, free flowering. 50c ea.

Almond (F)—A vigorous, beautiful shrub; covered in May with double pink blossoms, like small Roses before the leaves appear. 85c each.



Golden Elder

Elder, Golden Leaved (E)—A handsome variety with golden-yellow foliage, which renders the plants very conspicuous and effective. White flowers. The berries are used for pies, jam and wine. 50c each.



Honeysuckle, Upright White

Honeysuckle, Upright White (E)—A well known shrub of erect habit. Valuable for its handsome flowers and showy fruit. Delightfully fragrant; one spray will fill a room with its delicate perfume. **50c each.**

Honeysuckle, Red (E)—A beautiful shrub. Very vigorous; producing large, bright red flowers, striped with white. **50c each.**

Honeysuckle, Pink (E)—Has flowers which contrast beautifully with the foliage. Looks very pretty planted with the white and red varieties. **50c each.**



Syringa

Syringa (E)—Of vigorous habit. Very hardy, with large, handsome foliage and beautiful white flowers produced in greatest profusion. One of the best and most popular shrubs. **50c each.**

Syringa, Golden (F)—A very pretty medium sized shrub with golden-yellow foliage. It keeps its color the entire season. Very valuable to plant with other shrubbery or in front of a porch. **60c each.**

LILACS

Purple Lilac (E)—The well known, old-fashioned Lilac; bluish purple flowers. **75c each; \$6.50 per ten.**

White Lilac (E)—Fragrant and free-flowering. **75c each; \$6.50 per ten.**



Lilac, Ludwig Spaeth

Ludwig Spaeth (E)—Panicles long, flowers large, dark purplish red. Very desirable. **\$1.00 each.**

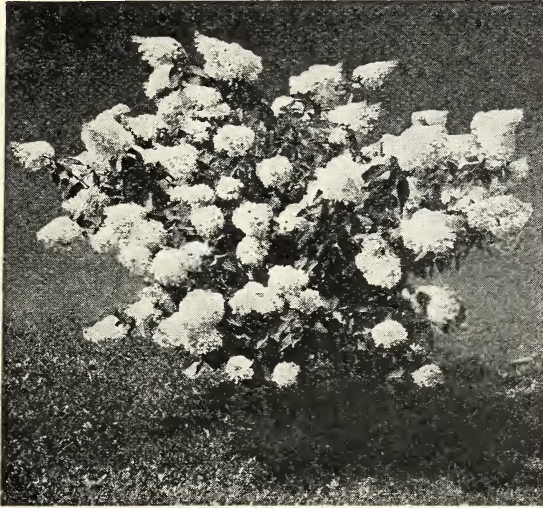
Marie Legraye (C)—Large panicles of white flowers. Valuable for forcing. One of the finest white Lilacs. **\$1.00 each.**

President Grevy (C)—A beautiful blue; individual flowers very double and very large. The panicle is magnificent; one of the finest Lilacs. **\$1.00 each.**

Villosa—A species from Japan. Large branching panicles; flowers light purple in bud, white when open; fragrant. Especially valuable, as its flowers appear two weeks after those of other Lilacs. **\$1.00 each.**

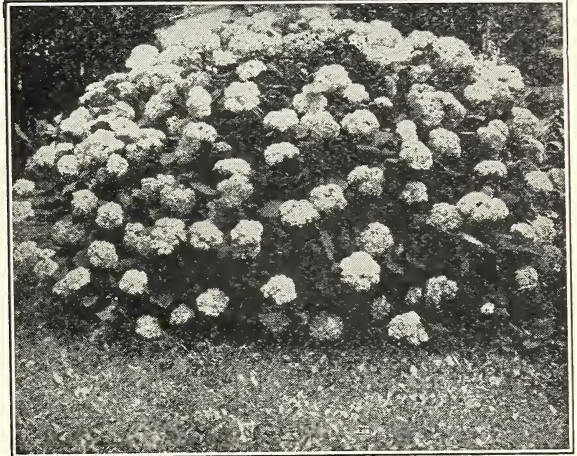
Quince, Japan (E)—Dark green foliage and showy, deep scarlet flowers of good size, produced singly or in masses along the branches. Much admired and often used for hedges. **75c each.**

Fringe, Purple (Smoke Tree) (D)—A small tree or shrub very much admired on account of its peculiar fringe, or hair-like flowers, covering the whole surface of the bush in midsummer. **75c each.**



Hydrangea, P. G.

Hydrangea, P. G. (E)—One of the most popular hardy shrubs, and also one of the finest flowering varieties. The immense heads of bloom are cream-color in bud, pure white when fully expanded, changing to pink and bronze with age, and finally to brown when frosted. Blooms in August and September, when very few shrubs are in flower. **50c each.**



Hydrangea, Arborescens

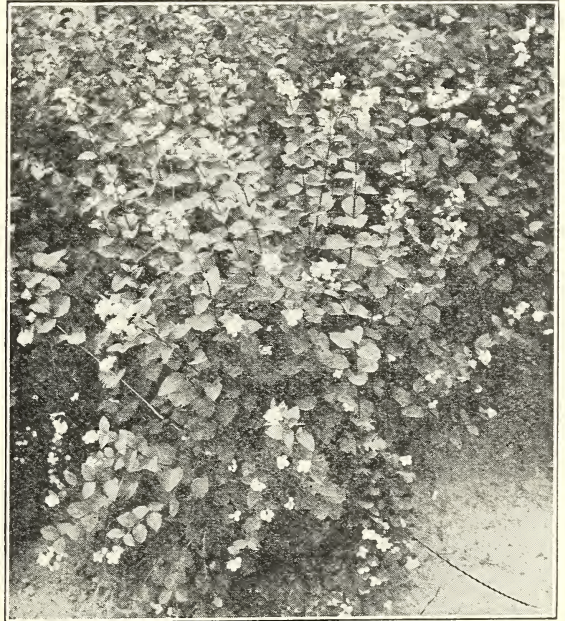
Hydrangea, Arborescens Grandiflora Alba (Hills of Snow) (E)—This hardy American shrub is the very finest addition to this class of plants found in many a year. The blooms are of the very largest size, of pure snow-white color, and the foliage is finely finished. **60c each.**



Hydrangea, P. G., Tree

Hydrangea, P. G., Tree Form (E)—Same as bush, but grown in tree form with single stem.

3 ft., \$1.00; 4 to 5 ft., \$1.50



Snowberry

Snowberry, Racemosus (E)—Bushy form, small pink flowers in summer; quantities of large, white, waxy, roundish berries in autumn that remain on the plant through part of the winter. **50c each.**

Snowberry, Vulgaris (E)—Low growing, spreading, graceful habit; foliage attractive; noteworthy for the beauty of its clusters of red berries which hang on the bush all winter. **50c each.**

High Bush Cranberry (E)—Very ornamental. Its red berries resemble cranberries which hang on until destroyed by frost. **60c each.**



Common Snowball

Snowball, Common (E)—A well known favorite shrub producing its snowy-white sterile flowers in large balls in June. **50c each.**

Snowball, Japan (*Viburnum Plicatum*) (E)—An erect, compact shrub, blooming in June; completely covered with large balls of flowers that are as white as snow, foliage is dark green. We recommend this most highly. **\$1.00 each.**

Snowball Tomentosum (E)—The single form of the beautiful Japan Snowball. Flowers pure white, borne along the branches in greatest profusion. Perfectly hardy, vigorous and free blooming. Very desirable. **75c each.**

Forsythia, or Golden Bell (E)—A very early and showy spring bloomer; flowers bright yellow, appearing before the leaves. Very effective for covering steep slopes, walls, fences and arbors. **50c each.**

Kerria, Japonica (F)—A green branched, slender, graceful shrub, with drooping branches, rich, dark yellow flowers which bloom all summer. **60c each.**

Purple-Leaved Filbert (E)—A very conspicuous shrub, with large, dark purple leaves. Particularly effective in shrubberies, or when planted by itself. Color good all season. **85c each.**

Prunus Triloba (E)—A beautiful shrub of vigorous growth. Blossoms very early in the spring, before the leaves appear. The whole bush is covered with double flowers of a delicate pink. **85c each.**

PÆONIES

Two-year-old roots

Pæony—A noble flower, almost rivaling the Rose in brilliancy of color and perfection of bloom. Hardy as an oak. In the most severe climate the plants require no protection. Each year adds to their size and beauty.

Price 50c each; \$4.50 per ten
By Parcel Post add 5c each; 35c per ten

Edulis Superba—Large, early and fragrant. Bright color mixed with lilac. Strong upright grower; very free bloomer. A good Decoration Day variety.

Alexandriana—Very large, double, light violet-rose; strong upright grower; free bloomer. Late. One of the best for cut flowers.

Madam Loise—Double pink; fragrant. One of the largest Pæonies grown. Sometimes has four large blossoms on one stem.



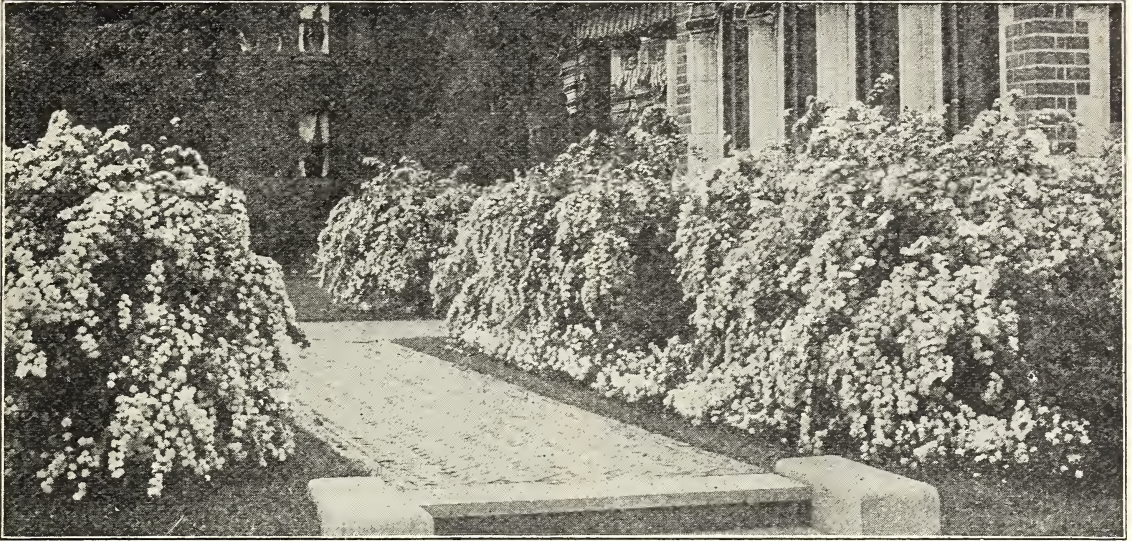
Festiva Maxima

Festiva Maxima—Very large snow white, some petals crimson. Tall, showy and vigorous grower. Early.

Couronne D'Or—Very double; yellowish. Grand cut-flower sort. Very late.

Humei—Large, very full; clear cherry pink. Strong grower. Late variety.

Louis Van Houette—Deep carmine rose with purple tints; very showy. Late.



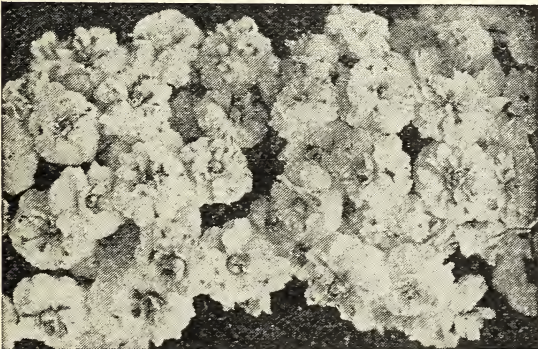
Spirea Van Houttei is especially attractive when planted in groups

SPIREAS

All the Spireas bloom with a riotous extravagance which makes them quite striking. Their individual style, color and habits of growth differ so markedly that a collection of varieties will insure bloom the entire season and still evade the monotony of repetition.

Spirea, Van Houttei (E)—Without doubt the finest variety in the collection. At the flowering season in May and June the plant is covered with a mass of large, white flowers, presenting a beautiful appearance. Very hardy. One of the finest shrubs in the Catalogue.

3 to 4 feet, 50c each; \$4.50 per ten
2 to 3 feet, 40c each; \$3.50 per ten



Spirea, Prunifolia

Spirea, Prunifolia (Bridal Wreath) (E)—A superb, old-fashioned variety, with graceful, upright, slender branches covered with a wreath of white flowers in May. 60c each.

Spirea, Aurea (Golden) (E)—Foliage green, bordered with rich golden yellow. In June the branches are covered with double white flowers. Very conspicuous. 50c each.

Spirea, Billardi (E)—Rose-colored flowers in spikes; blooms nearly all summer. 50c each.

Spirea, Bumalda (F)—A low growing bush with dark leaves. Blooms early in May. Flowers a delicate pink. Very desirable. 50c each.



Spirea, Anthony Waterer

Spirea, Anthony Waterer (F)—A dwarf variety of great beauty. Its broad, flat heads of red flowers continue in perfection all summer. 50c each.

Spirea, Thunbergii (F)—A dense, feathery bush. The foliage, which is a peculiar shade of yellowish-green, changing in autumn to bright red and orange. Flowers pure white, borne in feathery masses in early spring. 50c each.



Weigela, Rosea

Weigela, Rosea (E)—An elegant shrub, with fine rose-colored flowers; of erect, compact growth; blossoms in June. 50c each.



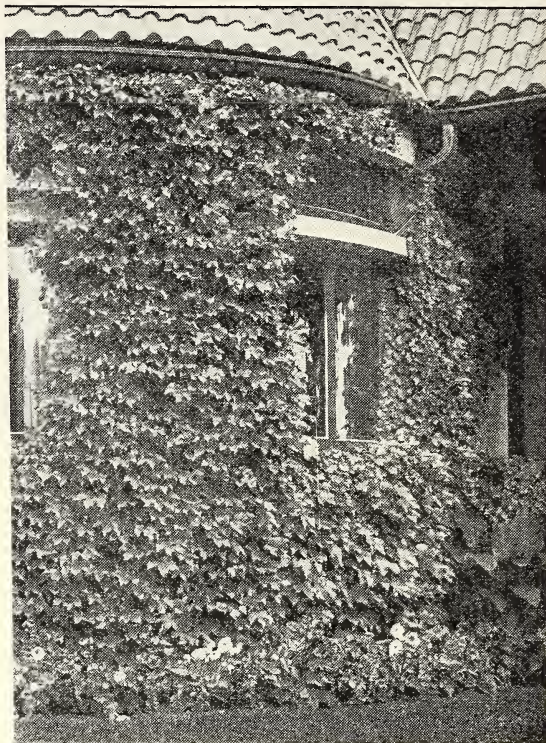
Weigela, Eva Rathke

Weigela, Eva Rathke (F)—Flowers brilliant crimson. A very attractive variety. Almost a continuous bloomer. 75c each.

Weigela, Variegated (F)—Of dwarf habit; finely variegated foliage which lasts the entire season; contrasts nicely with its rose-colored flowers. One of the best. 75c each.

ORNAMENTAL VINES

If sent by Parcel Post add 5c each;
25c per 10



Ampelopsis Veitchii—A handsome covering vine that will cling to any surface

Ampelopsis Veitchii (Boston Ivy)—Leaves overlap one another, forming a dense sheet of green. It grows rapidly and clings to wall or fence with the tenacity of Ivy; the foliage is very handsome in summer, and changes to crimson scarlet in autumn. For covering walls, garages, rockeries, etc., no plant is so useful. For the ornamentation of brick and stone structures, it can be specially recommended.

50c each; \$4.00 per ten.

Clematis, Paniculata—Single, white. Of extremely rapid growth, with shining green foliage, and a profusion of flowers which are small, but borne in large panicles; very popular. 50c each; \$4.50 per ten.

Clematis, Jackmanni—Large, intense violet purple and remarkable for its velvety richness; free in growth; abundant and successive bloomer. 75c each.

Clematis, Henryii—Single; the finest white Clematis; very large, fine flowers; grows rapidly, blooms freely during summer and autumn. 75c each.

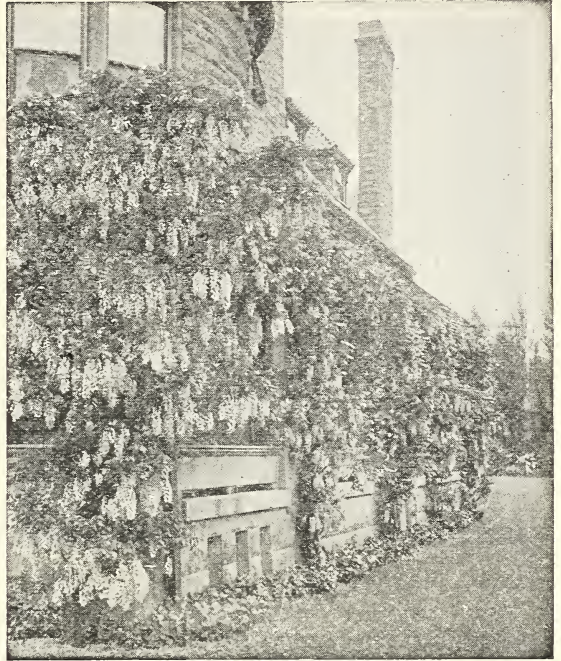
Clematis, Mme. Ed. Andre—Flowers medium size; dark red; flowering. 75c each.

Ivy, American or Virginia Creeper—A fine rich green in summer, changing to crimson in autumn. Affords shade quickly and is very desirable for covering walls, verandas or trunks of trees. 50c each.



Hall's Japan Honeysuckle

Honeysuckle, Hall's Japan—A strong, vigorous, almost evergreen sort, with pure white flowers, changing to yellow. Very fragrant. Covered with flowers from July to December; holds its leaves until January. Best bloomer of all vines. 50c each; \$4.50 per ten.



Wistaria, Purple

Wistaria, Chinese Purple—A rapid grower, unsurpassed for beauty and picturesqueness. It is hardy and lives to a great age, doing as well in cities amid unfavorable conditions as in the country. Has long, pendulous clusters of pale flowers in May and June and in autumn. 75c each.

Birthwort, or Dutchman's Pipe—Brownish flowers, resembling a miniature pipe. This is an ideal vine for situations requiring dense shade. Splendid for archways or verandas. The leaves are very large, broad, closely laid and deep green; vine grows rapidly. 75c each.

WOOD'S CHOICE ROSES

OUR ROSES ARE STRONG, TWO-YEAR, FIELD-GROWN PLANTS
WILL BLOOM THE FIRST YEAR

No class of flowers is as well or as universally loved as are Roses. They do best in a warm, sunny spot, and must be shielded from strong winds; they thrive in most any soil that is well drained. Our Roses are strong, hardy, field-grown plants.

SPECIAL PRICE on Roses, 75c each (unless otherwise noted)

If sent by mail add 5c per plant

Paul Neyron—This magnificent Rose is by far the largest in cultivation; very double; of a beautiful deep rose color and delightfully fragrant; borne upon vigorous upright shoots in great abundance throughout the entire season.

Richmond—Pure, rich scarlet; very free and continuous flowering, on long stems, suitable for cutting. \$1.00 each.

Clio—Flowers large, in clusters, of fine globular form, flesh-color shaded in the center with rosy pink; growth vigorous; handsome foliage. One of the best roses.

Mad. Gabriel Luizet—A magnificent, large, full and fragrant flower. Soft pink with deep flesh-colored center. One of the choicest.

Prince Camille de Rohan—Deep velvety crimson, the nearest approach to a black rose; large, moderately full. A splendid rose.

Juliet—Should be planted with every collection of Roses. Color on outside old gold, inside a rich rosy red, changing to deep rose as the flowers expand. Very fragrant.



Mrs. John Laing

Mrs. John Laing—Color a soft, delicate pink, with a satiny sheen; very fragrant. A remarkably free bloomer.

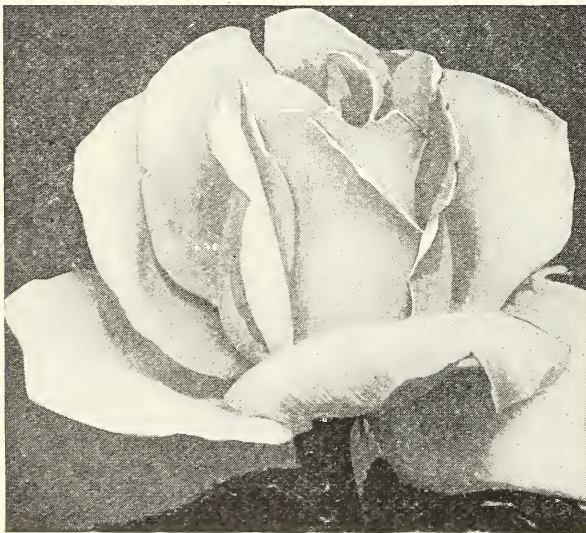


Gruss an Teplitz

Gruss an Teplitz—Scarlet, shading to velvety crimson, very fragrant; a free grower and most profuse bloomer. Blossoms the entire summer. We can recommend it as one of the choicest roses.

Radiance—Extra hardy, vigorous and prolific; one of the best all-around Garden Roses. Its color is a beautiful blending of carmine-rose with shades of opal and copper. **\$1.00 each.**

Duchess of Wellington—Called orange Killarney. Intense saffron-yellow, stained with rich crimson. As the flower develops it becomes deep copper, saffron-yellow. Petals large and of great substance. Free flowering and delightfully fragrant, and without a rival in this class and color. **\$1.00 each.**



Snow Queen—Most Perfect White Rose

Snow Queen (formerly Frau Karl Druschki)—White American Beauty—The color is a marvelous white; vigorous and hardy. A great beauty. **\$1.00 each.**

Los Angeles—New California product, one of the grandest all-around Roses of America ever put on the market. The stems are long as on American Beauty; the flowers are large as Paul Neyron, from long and pointed buds. Its freedom and continuance of bloom are remarkable; its color "has the tints of the dawn, the gold of noon-day and the blush of the sunset," according to one poetic admirer. **\$1.00 each.**

Columbia—A big Rose, the open flowers measuring six inches across. The color is a true pink, deepening as it opens to glowing pink. A peculiarity of this variety is that the shades all become more intense until the full maturity of the open flower is reached, and this color is enduring. A great Rose. **\$1.00 each.**



General Jacqueminot

General Jacqueminot—Brilliant crimson; one of the most handsome and most showy roses of this color; beautiful in the bud.

Mary, Countess of Ilchester—Carmine colored, forming flowers of great size, deliciously scented. Produced freely on long, upright stems. **\$1.00 each.**

Jamesville, N. Y., Mar. 31, 1922

Woodlawn Nurseries:

Dear Sirs—Received the Rose bushes about a week ago and I wish to say that they are the finest and healthiest bushes, I have ever seen. The roots were plentiful and the packing of them was excellent. A year ago I bought a few bushes of Roses, and every one of them are fine today.

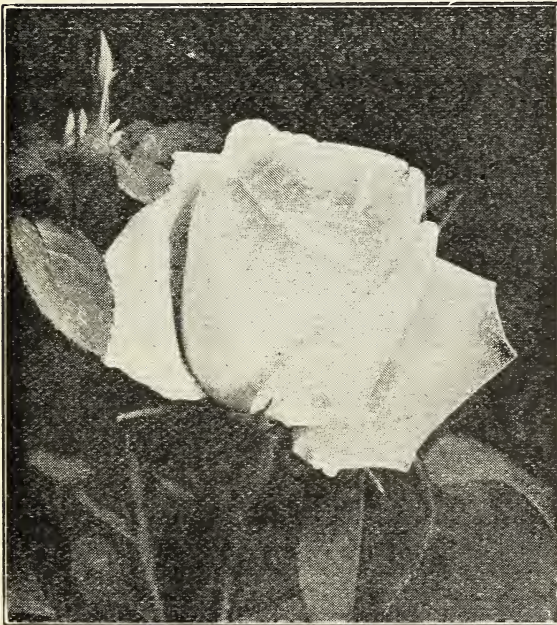
Your seeds are all that can be desired. I always advise my friends and neighbors to buy your stock, as it is true to word, healthy and exactly what you represent it to be. I can not say too much in praise of your Nursery Stock and seeds.

Very truly yours,
(Signed) EARL E. MONTGOMERY.



Pink Killarney—Queen of the Irish Roses

Pink Killarney—In color it is especially beautiful, being an exquisite shade of deep sea-shell pink. The buds and flowers are of enormous size, the petals being frequently two and one-half inches deep. Blooms profusely throughout the season. **\$1.00 each.**



Cecile Brunner

Cecile Brunner (or Sweetheart)—Double and delightfully fragrant; rose-pink, on a rich, creamy-white ground. Exquisite in bud and open flowers. **\$1.00 each.**

White Killarney—A duplicate of the charming pink Killarney, with flowers white as snow. **\$1.00 each.**

Ophelia—Beautiful in bud and flower; blooms freely; a long keeper. Color, salmon-pink, shading to rose. A very attractive and beautiful variety. One of the best. **\$1.00 each.**

Mrs. Aaron Ward—Indian - yellow to orange-copper in the opening bud, golden orange in the open bloom. Often a delicate pink is seen in the fully developed flower. One of the rarely beautiful new Roses. A free and constant bloomer. **\$1.00 each.**

Lady Ashtown—Soft, solid, carmine-pink. A splendid grower, with long pointed buds. **\$1.00 each.**

Persian Yellow—Bright yellow, nearly full. Hardy and vigorous.



Margaret Dickson Hamill

Margaret Dickson Hamill—Straw-colored petals, flushed with carmine. A beautiful and valuable variety. **\$1.00 each.**

Ulrich Brunner—A Rose of beautiful form and finish, very striking from its color of brilliant cherry-crimson. Free bloomer.

Marshall P. Wilder—Color cherry-carmine, richly shaded with maroon; very fragrant. Vigorous grower and hardy. It continues to bloom profusely long after others are out of flower.

WOOD'S CHOICE CLIMBING ROSES

TWO YEARS OLD—FIELD-GROWN

Special Price, 50c each; ten for \$4.50

(Unless otherwise noted)

If sent by mail add 5c per plant; 25c per ten

Dr. Van Fleet—One of the newer types of Climbers, which combines absolute hardiness with flowers large as in the Tea Roses. This variety shows a mass of beautiful clusters of rich, flesh-pink buds, and when opened large, delicate flowers, with stems 12 to 18 inches long.

Climbing American Beauty—A beautiful Rose—One plant will produce twenty times as many blooms as the old American Beauty. Over nine hundred blossoms and buds have been counted on one 4-year-old bush. The Roses grow on single stems and measure three to four inches in diameter. It has proved perfectly hardy, and the foliage is green and beautiful until the snow falls. It is a worthy ornament to any garden, and its beauty and fragrance will prove a lasting pleasure. If you are a lover of Roses do not fail to plant it. **75c each.**

Excelsa or Red Dorothy Perkins — The most handsome of all climbers. Double scarlet flowers in large trusses. Extremely vigorous and hardy.

Dorothy Perkins—Clear shell-pink with flowers borne in clusters; full and double, with crinkled petals. The foliage stays on until winter. This is without question one of the very finest of all climbing Roses.

Crimson Rambler—A vigorous and rapid grower, often growing 8 to 15 feet the first season. Charming variety for covering trellises or buildings. If grown on a wire fence as a hedge it will attract immediate attention. It produces clusters of handsome Crimson Roses.

Paul's Scarlet Climber—Vivid scarlet, shaded crimson; makes a brilliant display for a long period of time in the garden. A wonderful new climbing Rose. Received the Gold Medal and Cup for the best new climber at the National Rose Society Exhibit. **\$1.00 each.**

Aviateur Bleriot—New yellow climbing Rose, golden-yellow center; full, medium size, flowering in clusters. Very vigorous, and the finest yellow shading of its class, as well as the first of its color we have been able to offer. Only a very few two-year plants to offer. **\$1.00 each.**



Thousand Beauties — A superb Rose. Blooms profusely from early June until August, the flowers appearing in immense clusters of large size and double. The colors vary from a soft rose through the shades of carmine, white, yellow and other delicate tints. It is a strong grower and its magnificent foliage is of itself a valuable feature.

Pink Rambler—Resembles Crimson Rambler in every respect but color.

White Rambler — Similar to Crimson Rambler, only the color is pure white.

Shingle House, Pa.

Woodlawn Nurseries,
Rochester, N. Y.

Gentlemen—I never saw a finer lot of Shrubbery than the goods I received from you.

I bought \$50.00 worth from different nurseries and yours is by far the best of any. In the future my orders will go to Woodlawn.

Yours truly,
(Signed) MRS. A. L. COLE.

PLANTS AND BULBS

WOOD'S FANCY DAHLIAS

Best Six Varieties for Cut Flowers
All Prize Winners

Geisha—Buttercup-yellow at base of petals, shading to scarlet at center. Petals loose and twisted. The most popular and striking Dahlia. **75c each.**

Hortulanus Fiet (Giant Flower)—Lilac-rose, shaded from golden-yellow at base to pale lilac at tips, with deep lilac-rose. Giant size, measuring nine inches across. Free flowering. **75c each.**

John Wanamaker—A beautiful violet-rose. Type distinct and unique. **50c each.**

King of Autumn—A grand shade of autumn tints, on long stems; blooms freely. One of the best. **75c each.**

Maud Adams—White, tinted lavender. One of the best. **50c each.**

Rose—A deep, rosy purple shade. Flowers erect on long stems. Very popular. **50c each.**



J. H. Jackson—One of the finest Cactus Dahlias

CACTUS DAHLIAS

Ambassador—Ivory-white.

Countess of Lonsdale—Rich, salmon-pink

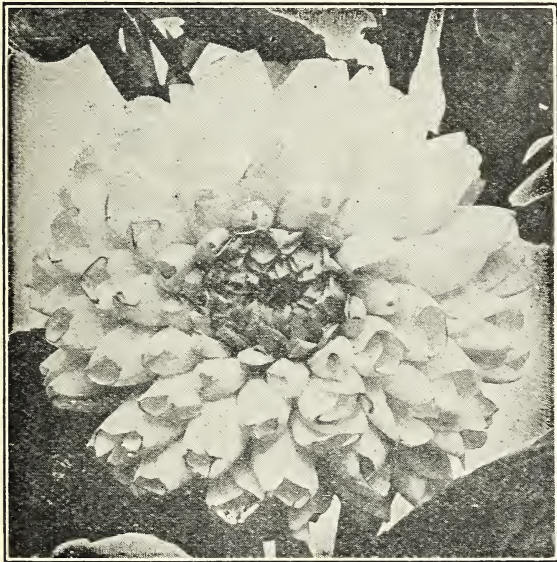
Marjorie Castleton—Very fine. Pink.

Golden Gate—One of the best yellow.

J.H. Jackson—Deep velvety black-maroon

Rene Cayeux—Rich geranium-red.

30c each; 6 (one of each) for \$1.50.



Yellow Duke Decorative Dahlia

DECORATIVE DAHLIAS

Delice—One of the best; soft rose-pink.

Jack Rose—Great favorite, rich, old rose color.

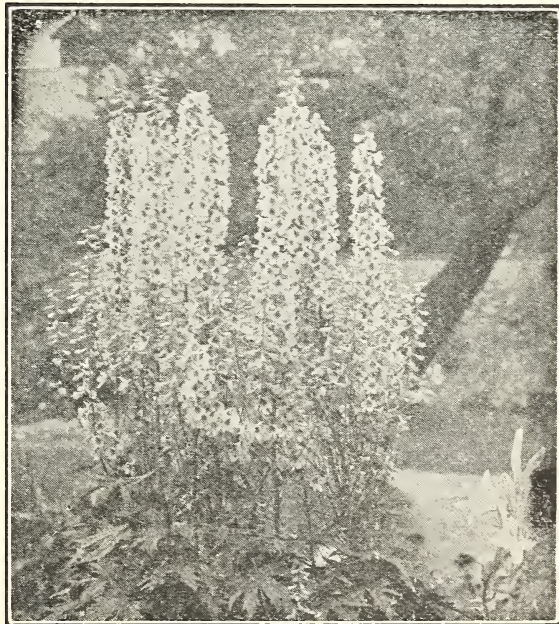
Jeanne Charmet—Very beautiful Lilac-pink.

Red Hussar—Bright red; continuous bloomer.

White Swan—Pure white; very popular.

Yellow Duke—Beautiful primrose-yellow. **30c each; 6 (one of each) for \$1.50.**

Golden Glow (E)—Large, showy plant, blooms from early summer until frost. Flowers 3½ inches in diameter, double, deep golden-yellow color, resembling yellow Chrysanthemums. **20c each; 2 for 35c; 6 for \$1.00.**



Delphinium or Larkspur

Delphinium (Larkspur)—The flowers are of a beautiful deep blue. Their long, showy spikes of flowers persist from June until frost and furnish the most satisfactory blue to any color scheme. **30c each; 6 for \$1.50.**



Phlox, **Fraulein G. Von Lassburg** (Pure White)
La Vague—A beautiful shade of violet.
Champs Elysee—Bright red. A great favorite.
Pantheon—Peerless pink. Extra large.
Caran d'Ache—Variegated with old rose shadings.
R. P. Struthers—Rosy carmine, with dark red eyes.
Fraulein G. Von Lassburg—Pure white. Very large.
 Our Phlox are 2 years old, strong and hardy; will bloom the first year.
30c each; 6 (one of each) for \$1.50



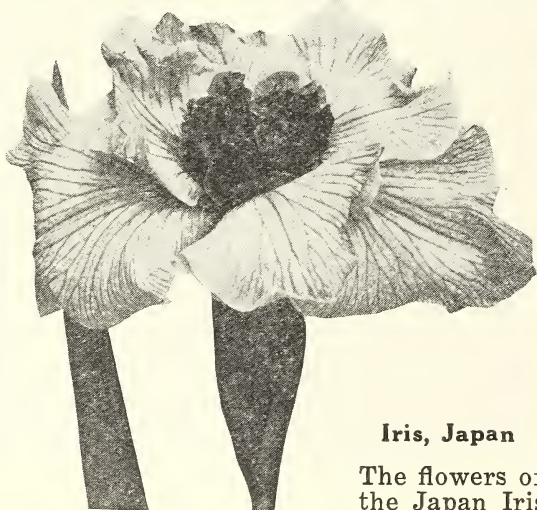
Lily of the Valley

Lily of the Valley—Will thrive and throw up its beautiful, fragrant white bell in any kind of soil.

10c each; 85c per ten



Shasta Daisy—A very hardy perennial, blooming better and more abundantly each season, and continuing to bloom for several months. The pure white flowers are from two and one-half to four inches in diameter, and are borne singly on long, stiff, wiry stems. Strong field-grown plants.
30c each; 5 for \$1.00



Iris, Japan

The flowers of the Japan Iris are of the richest colors, ranging from white to purple, with delicate markings and veinings. Most delicate and beautiful combinations of colors imaginable.

25c each; 6 for \$1.25



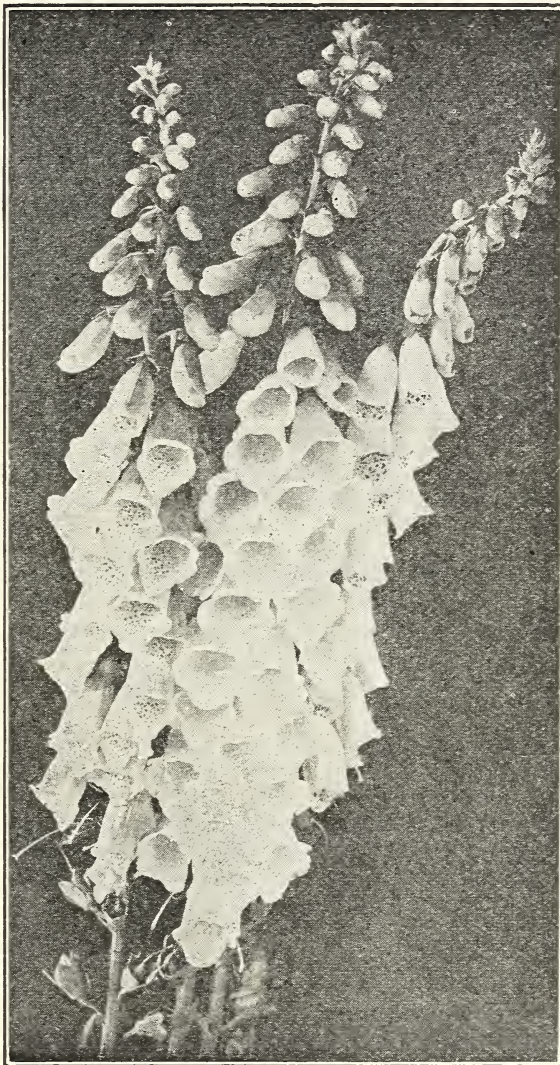
Campanula or Bell Flower

Campanula or Bell Flower—Are among the most beautiful perennials in cultivation and are used extensively for border plants. They possess that light transparent grace that is so attractive in a flower. Very free of bloom throughout a long season, and adapted to any garden soil. Especially good for cutting. Blue and white.

30c each; 6 for \$1.50

NEW GIANT MALLOW MARVELS

Red Flowering Mallow—Of all recent improvements among perennials, this new mammoth flower is the most striking and notable. The colors are wonderfully intensified. The flowers (10 to 12 inches across) are so vividly showy in their bloom as to demand a place in every garden. They are a delight to the eye; are hardy, and come up each year from the roots, developing into a bush 6 to 8 feet high, and have beautiful foliage. 40c each; 6 for \$2.00.



Digitalis or Foxglove

Digitalis or Foxglove—One of the most widely known and popular plants. The racemes are often two feet in length, containing scores of prettily-spotted thimble-shaped flowers. Very desirable for use in borders or as a background for lower growing plants. 30c each; 6 for \$1.50.

Gaillardia—One of the most gorgeous of all flowering plants. A hard center of deep maroon is thickly bordered with petals of orange and yellow, ringed by circles of crimson, red and maroon. 30c each; 6 for \$1.50.

Bucyrus, Ohio, Nov. 15, 1923

Allen L. Wood, Rochester, N. Y.
 Dear Sir—We received the box of shrubbery; the Committee was very much pleased with it, and we heartily thank you for being so prompt in sending us such fine stock.
 We have it all planted and it surely looks fine. I want to get some shrubbery this fall or next spring for my yard,
 Yours truly, (Signed) MRS. J. E. JOHNSON



Chicago White and Cracker-Jack

EXTRA CHOICE GLADIOLI
The Best Varieties Grown

Used by Florists for Weddings, Funerals,
Decorations, etc.

Prices—2 for 50c; 10 for \$2.00;
\$15.00 per 100

Evelyn Kirtland—The flowers of strong substance are a beautiful shade of rosy pink, darker at the edges, fading to shell-pink at the center with brilliant scarlet blotches on lower petals; the entire flower showing a glistening, sparkling lustre. Very tall spike. Extra fine form and color.

Herada—Blooms of immense size on tall straight spikes. An intense phlox color, shaded pure purple. Large flowers, many open at one time.

Liebesfeuer—A solid, brilliant scarlet. Many blooms open at one time, on a tall, erect spike. One of the finest and richest colored in existence.

Prince of Wales—Delicate salmon, rich wax-like flowers; one of the first to bloom, and a novelty of great value. Eight or ten blooms open at one time.

Schwaben—This is the largest and strongest flowered yellow Gladiolus. A clear citron-yellow, with aster-purple tongue on lower petals. Buds sulphur-yellow.

White Giant—Tall, immense pure white flower. Healthy, strong grower. Its shape resembles an Easter lily. Has frosted appearance by artificial light.

Choice varieties of Gladioli, 2 for 25c; 3 for 35c; 10 for \$1.00; \$8.00 per 100.

America—Too much cannot be said of this beautiful, dainty pink variety. The flowers are of immense size and of wax-like texture, borne on a very strong spike.

Chicago White—Large flower, pure white with faint lavender streak in the lower petals; very early bloomer.

Cracker-Jack—A rich maroon. A fine strong growing variety and a good bloomer.

Hadley—A most attractive early-blooming sort, with large, well-opened flowers of delicate salmon-pink. Very popular.

Panama—The companion to America, which has become very popular. A perfect Hermosa pink in color, with large, wide-open, wax-like flowers.

Princes— (Known as Thousand Dollar Gladiolus). Amaryllis-like flowers, rich dark scarlet marked with white on lower petals.

Yellow Hammer—Flowers delicate sulphur yellow, with darker shade in lower petals. Best yellow.

GLADIOLI COLLECTIONS

Of the Above Varieties

5 (1 of a kind) for 50c	By mail 58c
10 (2 of a kind) for \$1.00	By mail \$1.12
25 (5 of a kind) for \$2.00	By mail \$2.20



Hardy Chrysanthemums

Hardy Chrysanthemums live through the winter without protection. Bloom after all the other flowers are destroyed by frost.

Autumn Glow—Brilliant crimson flowers.

Early Snow—Pure white flowers.

Quinola—Golden-yellow.

Silver Moon—Beautiful shell-pink flowers
Large 2-year plants, 25c each; 4 (one of each color) 85c; 10 for \$2.00.



CALIFORNIA PRIVET HEDGE

HEDGE PLANTS

NOT many years ago the only hedges to be seen were those used for defense or defining boundaries, but today they are planted extensively for ornament. Many beautiful effects are now possible, and it is needless to say that these fences of living green beautify our homes and are rapidly supplanting the old-fashioned picket and iron fences. Probably the most widely planted of the deciduous hedges is the California Privet.

California Privet—A rapid and vigorous grower. It has handsome, glossy, oval-shaped leaves which remain well into the winter. Very popular for ornamental hedges.

	Each	Ten	Hundred
15 to 18 in. 2 Years	\$.10	\$.75	\$4.00
18 to 24 in. 2 Years15	1.00	5.00
2 to 3 ft. 2 Years. Extra20	1.25	7.00
3 to 4 ft. 2 Years. Extra.....	.25	1.50	9.00



BARBERRY THUNBERGII HEDGE

Barberry, Thunbergii—Dwarf growing; foliage rich, bright green; brilliant red color in autumn. Red berries also appear at that time. Perfectly hardy, easily transplanted and free from insects. Very ornamental and as attractive in winter as in summer.

	Each	Ten	Hundred
15 to 18 in. 2 Years. Extra.....	\$.30	\$2.50	\$20.00
18 to 24 in. 3 Years. Extra.....	.40	3.50	30.00
2 to 3 ft. 3 Years. Extra.....	.50	4.50	40.00



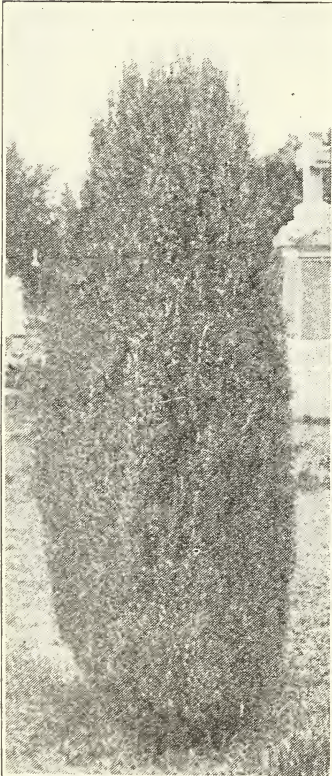
EVERGREEN PLANTING ON DRIVE

EVERGREENS

Evergreens are beautiful all the year and form grand specimens in time. We strongly recommend to our customers to plant more largely of the hardy sorts. In the following list we confine ourselves strictly to perfectly hardy species and varieties, such as are most useful for general planting. In transplanting Evergreens, so much depends upon the care of the planter in protecting roots from the air and sun that we cannot guarantee them further than that delivery shall be made in first-class condition. We recommend spring planting for Evergreens.

We have the Finest and Largest Collection of Choice Evergreens in the Country
They are dug with ball of earth, and roots wrapped in burlap.

ALL SPECIMEN PLANTS



Irish Juniper

Irish Juniper

A distinct and beautiful variety of erect, dense conical outline, resembling a pillar of green; very desirable

**3 to 4 feet,
extra heavy
Specimens,
balled,
\$4.00 each**

George Peabody Arbor Vitae

A beautiful golden variety

**18 to 24 in.
Specimens
\$4.00 each**



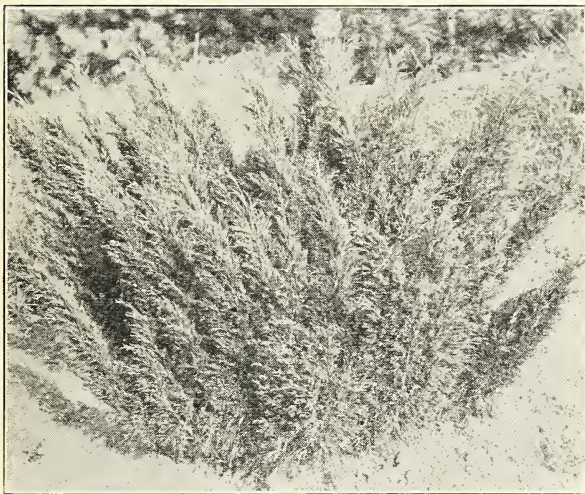
MUGHO—Dwarf Mountain Pine

Mugho—Dwarf Mountain pine. Low, dense and spreading in growth, usually broader than its height. One of the most attractive and valuable of our dwarf Evergreens. **18 to 24 in. Specimens, \$4.00 each.**



Compacta Globe Arbor Vitae

Compacta Globe Arbor Vitae—Of dwarf, compact form; light green foliage. Neat and attractive. Useful for beds, borders or around porches. 15 to 18 in., \$3.00 each.



Savin Juniper

Savin Juniper—A low spreading tree, with handsome, dark green foliage. Very hardy and suitable for lawns and around porches. Can be pruned to any desired shape.

18 to 24 in.....\$4.00 each
2 to 3 ft..... 5.00 each

Juniper Swedish (Suecica)—Dwarf, compact habit; with bluish-green foliage. Forms a beautiful pyramidal tree. Holds its color in winter.

18 to 24 in.....\$4.00 each

Juniper Pfitzeriana—A beautiful new Evergreen of spreading, graceful habit, with silvery green color. Both the main stems and lateral shoots have a light, feathery appearance. Distinctive and charming.

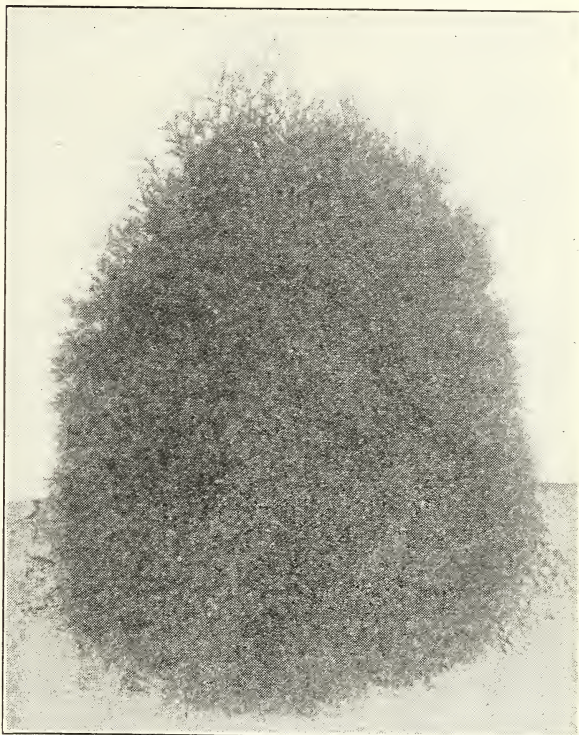
18 to 24 in.....\$3.00 each
2 to 3 ft..... 4.00 each
3 to 4 ft. Heavy Specimens.... 8.00 each

Retinospora Aurea (Golden Japan Cypress)—One of the few really golden Evergreens. A plant of great beauty. Foliage soft plume like; close and compact habit.

2 to 3 ft. Specimens.....\$5.00 each

Retinospora Plumosa—An exceedingly handsome Evergreen from Japan with feathery, light green foliage; compact habit.

2 to 3 ft. Specimens.....\$5.00 each



Occidentalis Arbor Vitae

Occidentalis Arbor Vitae—A well known variety of great value; forms an upright, conical tree of only medium size. A rapid grower. Excellent specimen for planting in tubs or on the lawn.

3 to 4 ft.....\$4.00 each

Globe Arbor Vitae—Forms a natural Evergreen globe or ball without any trimming; very pretty and hardy.

18 to 24 in.....\$4.00 each
24 to 30 inch Specimens..... 5.00 each

Strobus White Pine—The most ornamental of all our native pines; foliage light, delicate or silvery green; flourishes in the poorest soils.

4 to 5 ft. Specimens.....\$4.00 each

Scotch Pine—A native of the British Islands. A fine, robust, rapid growing tree, with stout, erect shoots and silvery green foliage. Very hardy; valuable for shelter.

4 to 5 ft., \$4.00 each 6 to 7 ft., \$6.00 each

Pyramidal Arbor Vitae—One of the most beautiful varieties, very erect and regular in form, resembling the Irish Juniper; foliage a deep green color, well retained in winter; perfectly hardy. Unlike the Juniper it is easily transplanted and sure to give satisfaction.

3 to 4 ft. Specimens.....\$6.00 each
 4 to 5 ft. Heavy Specimens..... 8.00 each

Chinese Arbor Vitae—The flat growth of the young branches, and its dense foliage with bright green color, makes it most beautiful and very valuable.

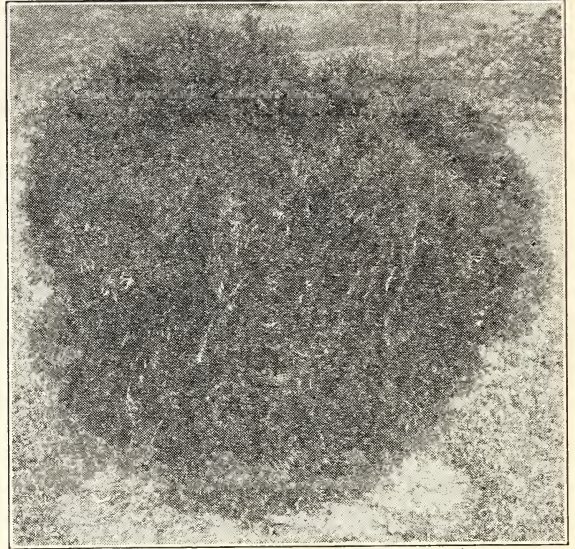
4 to 5 ft. Specimens.....\$10.00 each
 5 to 6 ft. Specimens..... 12.00 each
 6 to 7 ft. Specimens..... 17.00 each



Thuja American Arbor Vitae

Thuja American Arbor Vitae — Erect pyramidal habit; soft, dark green foliage. Dense from ground up. Rapid grower; hardy. Excellent specimen for planting in tubs.

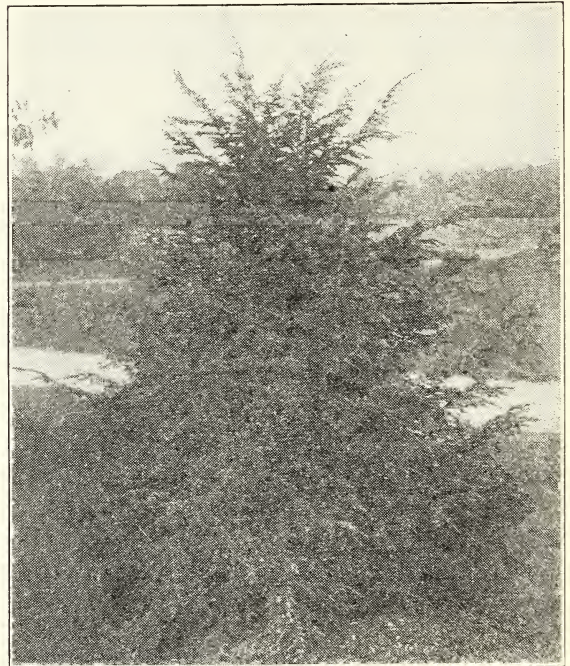
3 to 4 ft.....\$4.00 each
 5 to 6 ft. Heavy Specimens..... 8.00 each



Siberian Globe Arbor Vitae

Siberian Globe Arbor Vitae—A superb variety; somewhat similar to American, with heavier and fuller foliage and more compact habit. It holds its color during winter and bears trimming well. One of the hardiest.

18 to 24 inches.....\$4.00 each



Canadensis, Hemlock

Canadensis (Hemlock Spruce)—A remarkably graceful and beautiful native tree, with drooping branches and delicate dark foliage, like that of the Yew; distinct from all other trees. A handsome ornamental tree.

3 to 4 ft.....\$ 5.00 each
 4 to 5 ft..... 7.00 each
 5 to 6 ft..... 12.00 each



Woodlawn Grass Seed Mixture

We take special pride in our Lawn Seed Mixture. It is composed of the very best grades of Blue Grass, Red Top, White Clover and other desirable varieties; no cheap or light seed of any description is used.

There is a big opportunity for adulteration in lawn grass seed. Mixtures are very often composed of light seed of cheap grades, chaff that won't grow, and practically no white clover. We advise our customers, who wish a perfect lawn, to purchase seed only from reliable houses. One pound will seed about 300 square feet.

1 lb. 50c prepaid
5 lbs. \$2.00, not prepaid
1 bu. (20 lbs.) \$7.00, not prepaid

Bags extra— 5 lbs. 10c
Bags extra—10 lbs. 15c
Bags extra—20 lbs. 25c

FERTILIZER

WOODLAWN PULVERIZED SHEEP MANURE
Very Best Fertilizer for Lawn and Garden

A light, dry, odorless, concentrated fertilizer, free from seeds and all foreign matter. It will not burn the grass or plants, and quickly dissolves and disappears from the surface when your lawn and garden is watered.

Pulverized Sheep Manure will help keep your lawn green and make your garden produce the finest vegetables and flowers.

5 lbs.....\$0.40	100 lbs.....\$ 3.00
12½ lbs..... .75	500 lbs..... 12.50
25 lbs..... 1.25	1,000 lbs..... 21.00
50 lbs..... 2.00	2,000 lbs (1 ton) 40.00

For liquid manure, 1 pound to 5 gallons of water, used once a week. For greenhouse or house plants, mix one part to ten parts soil.

TESTED SEEDS

All our seeds are tested before they are sent out. We do not use any seeds in filling orders that do not prove at least 96% fertile.

Our Flower and Vegetable seeds are of the highest standard and quality you can buy. Three years ago we offered seeds in our catalog for the first time, and since then have received a great many testimonials from satisfied customers.

We are going to keep our seeds up to the highest standard so our customers will know where to get reliable seeds.

WOODLAWN NURSERIES.
 Allen L. Wood.



POSTAGE ON SEEDS PREPAID ON PACKET, OZ. AND LBS., EXCEPT WHERE OTHERWISE NOTED. If larger quantities are wanted by parcel post, add 7c per lb.

BEANS

CULTURE—A light loam is best adapted to a perfect bean crop. Plant as soon as the ground has become thoroughly warm in rows two feet apart for hand cultivation and three feet apart for horse cultivation. Cultivate often, keeping a mulch of loose soil at all times. When beans are in bloom cultivate shallow, as deep cultivation causes many blossoms to drop, decreasing the yield. One pound for fifty feet of rows.

BUSH LIMA BEANS

Packet 10c; ½ lb. 35c; 1 lb. 60c, prepaid; 10 lbs. or more 50c per lb.

Fordhook Bush Lima—Without doubt the best Bush Lima. Earlier than the Pole Lima by ten days. Excellent quality.

Burpee's Bush Lima—A popular variety of Bush Limas, growing only 18 to 20 inches high. Very productive, with pods and beans of the same shape and as large as those of the Pole Limas; of excellent quality.

POLE BEANS

Old Homestead (Kentucky Wonder)—Ten days earlier than any other green-podded pole bean. Pods 8 to 10 inches long, entirely stringless.

Packet 10c; ½ lb. 25c; 1 lb. 40c, prepaid; 10 lbs. or more 30c per lb.

YELLOW-PODDED BUSH BEANS

Packet 10c; ½ lb. 25c; 1 lb. 40c, prepaid; 10 lbs. or more 30c per lb.

Refugee Wax—One of the best Beans for the home garden or market. The pods are long, round and wax-like; perfectly stringless, tender and of the finest quality. Comes into bearing about 40 days after planting.

Rustless Golden Wax—Its fine quality, hardiness, productiveness make it a general favorite.

GREEN-PODDED BUSH BEANS

Packet 10c; ½ lb. 25c; 1 lb. 35c, prepaid; 10 lbs. or more 25c per lb.

Improved Stringless Green-Pod—Too much cannot be said in favor of this most excellent variety. Absolutely stringless and very tender.

Bountiful—Of superior quality, early and productive. Its pods remain in an edible condition for a long time.

BEETS

Extra-early Crosby's Egyptian—An extra-early strain of the old favorite Crosby's Egyptian; globe shaped and of better quality than the parent.

Packet 5c; 1 oz. 20c; ¼ lb. 50c; 1 lb. \$1.50, prepaid.

Detroit Dark Red—One of the best turnip-shaped Beets for the market and home garden and winter storage. Flesh rich red, fine grained, without a hard core; uniformly smooth and of medium size.

Packet 5c; 1 oz. 20c; ¼ lb. 50c; 1 lb. \$1.50, prepaid.

Mangel-Wurzel—Also called Mangel; Cattle and Field Beet. May be grown in almost any soil, but deep loams are necessary for heavy yields of the long varieties.

1 oz. 10c; ¼ lb. 30c; 1 lb. 90c, prepaid.

CAULIFLOWER

Early Snowball—A dwarf variety producing magnificent big heads of the finest quality. Desirable for both the garden and market.

Packet 15c; ¼ oz. \$1.00; ½ oz. \$1.75, prepaid.

CHINESE, or PE-TSAI

A new Celery-Cabbage recently introduced from the Orient. Resembles Cos Lettuce in habit of growth. Served as cold slaw, salad, or cooked like cabbage.

Packet 10c; ¼ oz. 25c; 1 oz. 60c; ¼ lb. \$1.40; 1 lb. \$4.50, prepaid.

CABBAGE

More money can be lost by a gardener who plants poor Cabbage seed than with almost any other vegetable. Our seed is absolutely new stock from the best professional growers.

Copenhagen Market—For home gardens and market; early, solid head, short stems.

Packet 10c; $\frac{1}{4}$ oz. 25c; 1 oz. 50c;
 $\frac{1}{4}$ lb. \$1.20; 1 lb. \$3.50, prepaid.

All Seasons—Unsurpassed for medium early or main crop variety; heads large, nearly round, extremely solid; fine quality.

Packet 10c; $\frac{1}{4}$ oz. 20c; 1 oz. 40c;
 $\frac{1}{4}$ lb. \$1.00; 1 lb. \$2.75, prepaid.

Improved Danish Ballhead (short stem)—A winter variety of the very greatest popularity. Heads solid, with few outer leaves, and will weigh 25 per cent more than any other Cabbage of equal size. Our strain of this variety is unsurpassed.

Packet 10c; $\frac{1}{4}$ oz. 20c; 1 oz. 40c;
 $\frac{1}{4}$ lb. \$1.00; 1 lb. \$2.75, prepaid.

Mammoth Rock Red—The old-fashioned red Cabbage; heads large, round and solid.

Packet 10c; $\frac{1}{4}$ oz. 20c; 1 oz. 40c;
 $\frac{1}{4}$ lb. \$1.00; 1 lb. \$2.75, prepaid.

Improved American Savoy—Leaves curled and crinkled; dark green in color. The best of all the Savoy Cabbages.

Packet 10c; $\frac{1}{4}$ oz. 20c; 1 oz. 40c;
 $\frac{1}{4}$ lb. \$1.00; 1 lb. \$2.75, prepaid.

CELERY

Paris Golden Dwarf Self-Blanching—A dwarf variety of rapid growth; is ready for use earlier than other sorts and also desirable for late planting. Rich golden color, crisp, with solid brittle hearts. One of the very best varieties for market or home garden. **French Seed.**

Packet 10c; $\frac{1}{2}$ oz. 60c; 1 oz. \$1.00;
 $\frac{1}{4}$ lb. \$3.00, prepaid.

Winter Queen—Robust and stocky, requires little labor to blanch clear white. Stalks solid and crisp, with little foliage and therefore slight waste. A splendid keeping variety.

Packet 5c; $\frac{1}{4}$ oz. 20c; 1 oz. 40c;
 $\frac{1}{4}$ lb. 75c, prepaid.

CARROTS

Danvers Half-Long—Semi-stump-rooted, dark orange; smooth; has yielded 25 to 30 tons per acre.

Packet 5c; 1 oz. 20c; $\frac{1}{4}$ lb. 40c;
1 lb. \$1.35, prepaid.

Chantenay Stump-rooted—Six to seven inches long, thicker than other sorts; flesh orange red, free from core. One of the best for market or home garden.

Packet 5c; 1 oz. 20c; $\frac{1}{4}$ lb. 40c;
1 lb. \$1.35, prepaid.

EGGPLANT

Improved New York Purple—One of the best for garden culture. Fruits large, round or slightly oval, dark purple.

Packet 10c; $\frac{1}{2}$ oz. 40c; 1 oz. 75c;
 $\frac{1}{4}$ lb. \$2.50, prepaid.

LETTUCE

Big Boston—The most valuable Lettuce for the market gardener and home garden. Splendid large, solid heads blanching to a creamy-yellow; leaves crisp, tender, few waste outside leaves.

Packet 10c; 1 oz. 20c; $\frac{1}{4}$ lb. 50c;
1 lb. \$1.85, prepaid.

Crisp as Ice—Large, round, solid heads; outer leaves green, heart rich creamy yellow. A perfect home garden variety.

Packet 10c; 1 oz. 20c; $\frac{1}{4}$ lb. 50c;
1 lb. \$1.85, prepaid.

Prize Head—A loose-headed variety; curly leaves, edged brown. One of the best varieties for the home garden.

Packet 10c; 1 oz. 20c; $\frac{1}{4}$ lb. 50c;
1 lb. \$1.75 prepaid.

Black-seeded Simpson—A good variety for growing under glass or in the open ground. Heads of good size; outer leaves green, golden-yellow heart.

Packet 10c; 1 oz. 20c; $\frac{1}{4}$ lb. 50c;
1 lb. \$1.75, prepaid.

Cos, or Romaine—Leaves long and conical, requiring to be tied up; the center soon forms a solid head, turning to snowy whiteness.

Packet 10c; 1 oz. 20c; $\frac{1}{4}$ lb. 50c;
1 lb. \$1.75, prepaid.

SWEET CORN

Packet 5c; $\frac{1}{2}$ lb. 20c; 1 lb. 35c, prepaid.
5 lbs. \$1.25; 10 lbs. \$2.25.

Early Golden Bantam—The most famous of the early sweet corns. Stalks from 3 to 4 feet high, usually bearing two ears, which are filled to the tip with creamy-yellow, sweet kernels.

Stowell's Evergreen—The standard main crop Sweet Corn for the home garden or for the market. Ears large size with deep kernels, remaining fresh and edible longer than any other variety.

Golden Nugget—(Second early). Similar to Golden Bantam.

Black Mexican—Splendid variety for the home garden. Unusually sweet and prolific. Kernels mixed, black, blue and white, but turn white when cooked.

Early Evergreen—Earlier than Stowell's Evergreen and equally good in other respects.

POP CORN

White Rice—Ears 6 to 8 inches long, shapely pointed kernels, resembling grains of rice. The Corn when popped is pure white.

Packet 5c; ½ lb. 20c; 1 lb. 30c, prepaid.
5 lbs. 90c; 10 lbs. \$1.60.

CUCUMBER

Improved Early White Spine—Valuable for forcing or outdoor planting. Early, good sized, smooth and straight. Deep green color, seldom turning yellow.

Packet 10c; 1 oz. 25c; ¼ lb. 60c;
1 lb. \$1.80, prepaid.

Improved Long Green—Extensively used for pickling. Fruits dark green, uniform in shape and size, frequently 12 inches long. Extremely free bearing.

Packet 10c; 1 oz. 25c; ¼ lb. 60c;
1 lb. \$1.75, prepaid.

Japanese Climbing—May be grown on a trellis as a screen. Fruits large, 10 to 12 inches long; excellent when sliced in salads or as pickles.

Packet 10c; 1 oz. 25c; ¼ lb. 65c;
1 lb. \$2.00, prepaid.

ENDIVE

Moss Curled—Foliage dark green, finely curled.

Packet 5c; 1 oz. 20c; ¼ lb. 50c;
1 lb. \$1.75, prepaid.

Broad-leaved Batavian (Escarolle)—Leaves thick, either plain or slightly wrinkled.

Packet 5c; 1 oz. 20c; ¼ lb. 50c;
1 lb. \$1.75, prepaid.

FRENCH ENDIVE OR CHICORY

French Endive—A delicious vegetable; very popular as a salad or can be used as greens, the same as beets or dandelions.

Packet 10c; ½ oz. 25c; 1 oz. 40c;
¼ lb. \$1.00, prepaid.

MUSKMELONS

Irondequoit—The finest yellow-fleshed melon on the market. Fruits unusually large, fairly smooth skin, turning yellow when ripe. Flesh rich salmon-yellow, sweet and of a most delicious flavor. Commands a higher price than any other variety.

Packet 10c; ½ oz. 20c; 1 oz. 30c;
¼ lb. 75c; 1 lb. \$2.00, prepaid.

Emerald Gem—Smooth, emerald green skin; flesh salmon, ripening clear through to the rind.

Packet 5c; 1 oz. 20c; ¼ lb. 50c;
1 lb. \$1.75, prepaid.

Rocky Ford—Extra early; slightly oval in shape, ribbed and covered with a coarse netting. Valuable shipping variety.

Packet 5c; 1 oz. 20c; ¼ lb. 50c;
1 lb. \$1.75, prepaid.

WATERMELONS

Packet 5c; 1 oz. 15c; ¼ lb. 40c;
1 lb. \$1.25, prepaid.

Cultivation similar to muskmelon; hills should be 6 to 8 feet apart. One ounce will plant 25 to 30 hills; one pound to the acre.

Cole's Early—Best for home garden and nearby market, as it is too tender for shipping. Flesh deep red; ripens clear to the rind.

Kleckley Sweets—One of the finest Watermelons, 18 to 20 inches through; skin dark green, flesh bright scarlet.

Citron (for Preserves)—Small round fruits, white flesh.

SPINACH

Packet 5c; 1 oz. 15c; ¼ lb. 35c;
1 lb. 75c, prepaid.

Long Season—A warm weather variety; compact, with short stems; leaves thick, well crinkled, dark green.

Bloomsdale Savoy-leaved—Especially adapted for fall sowing; leaves wrinkled and curled.

ONIONS

Packet 10c; ½ oz. 25c; 1 oz. 40c;
¼ lb. 85c; 1 lb. \$2.75, prepaid.

Southport White Globe—Clear white skin and flesh; quite mild. A good shipper and a better keeper than many white sorts.

Southport Red Globe—A favorite sort where there is a demand for red varieties; globe-shaped, medium large size, with smooth skin and small neck; flesh white.

Danvers Yellow Globe—Extra large, thick bulb, slightly flattened at the bottom, full oval top and small neck; skin yellowish-brown, flesh clear white. The seed we offer is from selected stock and is a distinctly fine strain.

Mammoth Prizetaker—The largest of all Onions, often 15 to 18 inches in circumference. Desirable for fall and early winter; flesh pure white, similar to the Bermudas.

American Silver Skin—Very popular as a pickling Onion, for use in salads, and for bunching. Medium size, mild flavor and beautiful, clear white skin.

PARSLEY

Extra Triple-curved—Pale green, extra-curved and crimped; dwarf and compact.

Packet 5c; 1 oz. 15c; ¼ lb. 50c;
1 lb. \$1.50, prepaid.

PARSNIP

Long Hollow Crown—A standard variety for home garden and market purposes. Long, smooth, hardy, keeping through the winter with little protection.

Packet 10c; 1 oz. 25c; ¼ lb. 50c;
1 lb. \$1.50, prepaid.

GARDEN PEAS

Packet 10c; ½ lb. 30c; 1 lb. 50c, prepaid; 10 lbs. or more 30c per lb.

Nott's Excelsior—This well known and valuable sort begins to bear early and continues to bear for a long time. Pods good sized and well filled. Plants about 16 inches tall.

Thomas Laxton—Extra early, strong. Large blunt pods, well filled with quality peas.

Extra-early Premium Gem—An old favorite, very productive, pods large and well filled.

Telephone—The Standard main crop variety; heavy bearer of large pods, containing 6 to 7 peas.

Champion of England—A late variety; pods good size, filled with green wrinkled peas. Vines 5 feet high.

PEPPER

Packet 10c; ½ oz. 40c; 1 oz. 65c; ¼ lb. \$2.00, prepaid.

Chinese Giant—Largest of all Peppers; mild, bright scarlet, flesh thick and sweet. A very popular table variety for making "stuffed peppers" or "mangoes." Plant is strong-growing and productive.

Large Bell, or Bull Nose—Quite early, nearly as large as Chinese Giant. Fruit thick, mildly flavored.

Long Red Cayenne—Late; fruit small, cone shaped, bright scarlet; hot.

RADISH

Packet 5c; 1 oz. 15c; ¼ lb. 40c; 1 lb. \$1.35, prepaid.

White Icicle—The best of the long white varieties, crisp and brittle. Suitable for growing under glass and in the open garden.

Early Scarlet Globe—Probably more of this variety is grown than any other Radish. Skin is rich, bright scarlet; flesh white, fine grained. One of the leaders for market gardeners.

Scarlet Turnip White Tip—Medium size, bright scarlet with a distinct white tip, flesh white, matures in about 25 days.

Long Brightest Scarlet—Brilliant scarlet, white flesh; 3 to 4 inches long.

SWISS CHARD

Large-ribbed Yellow Brazilian—Foliage quite tall, and is marked with golden-yellow veins.

Packet 10c; 1 oz. 20c; ¼ lb. 45c; 1 lb. \$1.40, prepaid.

SQUASH

Packet 10c; 1 oz. 25c; ¼ lb. 60c; 1 lb. \$1.75, prepaid.

Mammoth Bush Summer Crookneck—Extra large, 15 to 20 inches long, rich golden-yellow.

Improved Hubbard—Larger than the old Hubbard; outer skin deep green, flesh golden-yellow, finely grained. Extra heavy.

PUMPKIN

Sugar, or Pie—10 to 12 inches in diameter, slightly flattened at either end; skin orange, flesh yellow.

Packet 10c; 1 oz. 20c; ¼ lb. 45c; 1 lb. \$1.40, prepaid.

Connecticut Field—Extra large, orange color.

Packet 5c; 1 oz. 15c; ¼ lb. 40c; 1 lb. \$1.25, prepaid.

TOMATO

Packet 10c; ½ oz. 20c; 1 oz. 35c; ¼ lb. \$1.00; 1 lb. \$3.50, prepaid.

Bonney Best—Color intense glowing scarlet; ripens to the stem without crack or black spot. Desirable for market or home use.

Dwarf Champion—Fruits medium size, smooth, purplish-carmine; plants dwarf.

Improved Stone—Better than the old Stone because of size, weight and color; fruits perfectly smooth, ripens to the stem and especially desirable for canning purposes.

John Baer—Among the first earlies; round, smooth, bright scarlet. Desirable for both market use and home garden.

Ponderosa—Possibly the largest of all varieties, often weighing three pounds each; solid, meaty, few seeds; reddish-purple.

Packet 10c; 1 oz. 40c; ¼ lb. \$1.50; 1 lb. \$4.50, prepaid.

TURNIP

Purple-Top White Globe—Flesh firm, fine grain, sweet and mild. Desirable for table, unsurpassed for stock.

Purple-Top Strap-Leaf—Quick grower; valuable for spring planting; flesh and skin white, changing to purple above ground.

Packet 5c; 1 oz. 15c; ¼ lb. 35c; 1 lb. \$1.00, prepaid.

RUTABAGA (SWEDE TURNIP)

Used principally for stock feeding. Cultivation is the same as for turnip.

Imperial Purple-Top Yellow—Large; yellow, with purple top; one of the best.

Packet 5c; 1 oz. 15c; ¼ lb. 35c; 1 lb. \$1.00, prepaid.

VEGETABLE OYSTER

Packet 10c; 1 oz. 30c; ¼ lb. 80c; 1 lb. \$2.65, prepaid.

Flower Seed Department

ASTERS

We offer only the very best varieties. Our seed is absolutely fresh 1923 stock, strictly true to name. Postage on seeds prepaid on packet, oz, and lbs. except where otherwise noted.

AMERICAN BEAUTY

Packet 15c; 2 for 25c. Mixed colors, packet 15c; 2 for 25c.

IMPERIAL ASTERS

Imperial—A class of Asters blooming about midseason. Their delicacy of color, profusion of bloom, and the extreme doubleness make the flowers especially valuable for cutting.

Daybreak—Most delicate pink.

Purity—Double, and white as snow.

Rose—Light rose, with a silvery sheen.

Blue—A distinct novelty; the flowers are a pronounced bright blue.

Lavender—An extremely dainty tint of lavender which becomes quite pronounced as the blooms mature.

Packet 15c; 2 for 25c.

Mixed Colors—All the above colors mixed in one packet, 15c; 2 for 25c.

NEW ASTER, HEART OF FRANCE

The best pure red Aster ever introduced. Heart of France opens red as the purest ruby. Packet 20c; 2 for 35c.

ROYAL ASTER

Royal White	Royal Shell-Pink
Royal Lavender	Royal Purple
Royal Rose	

Packet 10c each

Mixed Colors—All of the above colors mixed in one packet, 15c; 2 for 25c.

LATE BRANCHING ASTERS

Snow-White	Shell-Pink
Lavender	Purple
Rose	

Packet 15c each

Mixed Colors—All of the above colors mixed in one packet, 15c; 2 for 25c.

KING ASTERS

Violet King	Pink King
Lavender King	White King
Rose King	Crimson King

Packet 15c; 2 for 25c.

Mixed colors, packet 15c; 2 for 25c.

ROCHESTER ASTER

Rochester—The blooms are similar to the old Comet Asters, excepting that they are of immense size, possibly the largest Aster introduced.

LAVENDER, PINK, WHITE, VIOLET, ROSE

Mixed—The preceding five colors in mixture. Packet 15c; 2 for 25c.

CANDYTUFT

Mixed varieties in 6 colors—Packet 5c; ½ oz. 25c; 1 oz. 40c.

ALYSSUM

Used for borders, rock work and baskets. Seed may be sown in early spring for summer blooming, or in August for winter blooming indoors.

Sweet—Pure white flowers, extremely fragrant.

Packet 10c; ½ oz. 25c; 1 oz. 40c.

Little Gem—Seldom over 6 inches high; fragrant white flowers. Packet 10c;

¼ oz. 25c.

Gold Dust—Bright yellow flowers.

Packet 10c; ¼ oz. 25c; 1 oz. 75c.

EARLY GIANT-FLOWERING COSMOS

Beautiful, fall-blooming plants, bearing great numbers of large, lovely flowers in many colors. Hardy, rapid-growing plants, 4 to 6 feet high. Sow seed in spring when danger from frost is past. Blooms from July to late fall.

Early Giant White.

Early Giant Pink.

Early Giant Crimson.

Packet 10c each

Mixed Colors, packet 10c.

BALSAM (LADY SLIPPER)

Mixed Colors. Packet 10c.

CALLIOPSIS

Plants about 10 inches high, and a mass of bloom all summer. Desirable for cutting.

Mixed Colors. Packet 10c.

CARDINAL CLIMBER

The most beautiful and brilliant Annual Climber ever sent out. Packet 15c.

HELIOTROPE

Both the flowers and the foliage are deliciously fragrant; long sprays are useful for cutting. Choice mixed colors.

Packet 10c.

CARNATIONS

Marguerite—Like the winter blooming Carnations, but bloom the first year from seed. A great variety of beautiful shades and fragrant double flowers. Plants can be taken up in pots for winter blooming.

Mixed Colors. Packet 10c.



SNAPDRAGONS

Blooms nearly all summer, and succeeds best in a light soil in full sun. Will bloom the first year, if the seed is sown in the early spring. Plants should be protected during the winter.

Brilliant Red—Flowers spiked like a flaming torch, almost covered with the full, double blooms. **Packet 10c.**

Silver Pink—The best variety for cutting. **Packet 10c.**

Queen Victoria—A superb, pure white variety, extra large blooms. **Packet 10c.**

Yellow—A pronounced rich yellow of extreme beauty. **Packet 10c.**

Mixed Colors. Packet 10c.

MARIGOLD

The African varieties are quite tall and produce many large, brilliantly colored blooms. Seed should be sown in rows in the open ground early in the spring or in the house in March and transplanted to the garden later. The flowers of the African varieties are large and self-colored.

Mixed Varieties. Packet 5c; 1/4 oz. 25c.

FRENCH MARIGOLD

The French Marigolds are smaller than the African varieties; the blooms are striped and shaded with varying colors.

Double Varieties Mixed. Packet 5c; 1/4 oz. 25c.

VERBENA

Hybrida—One of the best garden plants, but may also be grown in porch or window boxes. Flowers are delicately colored and sweet scented. **Packet 10c; 1/8 oz. 30c.**

Mammoth Varieties, Mixed—Packet 10c; 1/8 oz. 30c.

MARVEL OF PERU

Mixed Colors. Packet 5c; 1/2 oz. 20c.

MIGNONETTE

Sweet—The familiar and popular Sweet Mignonette. **Packet 5c; 1/2 oz. 20c.**

FORGET-ME-NOT

Alpestris—May be grown as a perennial if slightly protected in winter. Flowers azure blue. **Packet 10c.**

Alpestris, Indigo Blue—Packet 10c.

Palustris—The true Forget-me-not. Flowers deep blue. **Packet 15c.**

Perfection—Bright blue flowers; desirable for edgings. **Packet 20c.**

Mixed Varieties. Packet 10c.

NIGELLA

Love-in-a-mist, Fennel Flower and Devil-in-a-bush are some of the names of this plant. Foliage finely cut; flowers various shades of blue. **Mixed Colors. Packet 5c; 1/4 oz. 15c.**

PANSIES

Mastodon Mixture—The very finest strain of Mastodon Pansies are included in this mixture. The flowers are of unusually large size and brilliantly colored, with the wonderfully frilled edges that so distinctly mark this class. **Packet 25c; 1/16 oz. 85c; 1/8 oz. \$1.50.**

Large-flowered Mixed—A splendid strain of Pansies only a little less desirable than our Mastodon mixture. **Packet 15c; 1/16 oz. 50c; 1/8 oz. 75c.**

PETUNIA

One of our most brilliant summer bedding plants. Seed may be sown in a carefully prepared bed or in boxes and the plants transplanted.

Single-flowered Bedding Mixed—Many named varieties. **Packet 10c.**

POPPIES

Peony-flowered, Double, Mixed—Some of the blooms are so full and double that they resemble a pæony. Colors include white, scarlet, crimson, maroon and others. Mixed colors. **Packet 10c; 1/4 oz. 20c.**

Shirley—Flowers single, in varying colors, including crimson, scarlet, light pink and rose. **Packet 10c; 1/4 oz. 20c.**

Single Mixed—Finest varieties. **Packet 5c; 1/4 oz. 20c.**

Salpiglossis or Velvet Trumpet should be in every flower garden. In our opinion it is one of the very best for massing and house decoration; blooms early and all summer long. The delicate markings and colors attract the attention of all who see them. Separate colors, crimson and gold, dark scarlet, rose and gold, violet and gold, white and yellow, and yellow. **Packet 15c.**

Mixed Colors. Packet 10c.

KOCHIA (SUMMER CYPRESS)

Tricophylla—An annual about three feet in height. Splendid for temporary summer hedges. Throughout the summer it is a lively green, but towards autumn turns to a bright red. It is of rounded form, with very fine foliage and stems.

Packet 5c; 1/4 oz. 20c.

SUNFLOWER

Dwarf Chrysanthemum Sunflower—About four feet high. Branches from the ground to the top of main stem; bears golden Chrysanthemum flowers, finely fringed. Should be planted in every garden or in between shrubbery. **Packet 10c.**

COLUMBINE

Caerulea—Rocky Mountain Columbine. Flowers white and pale blue. **Packet 10c.**

Long-spurred Hybrids—Includes all the best and brightest colors and many new beautiful shades. **Packet 15c.**

Double Varieties, Mixed—Packet 10c.

**SPENCER ORCHID-FLOWERED
SWEET PEAS**

America—White ground, heavily flaked and striped with bright crimson-scarlet.

Asta Ohn—Charming soft lavender.

Captain of the Blues—Deep, rich blue, with tinge of purple.

Countess Spencer—Clear, soft, rich pink.

Dobbie's Cream—Deep cream; leaves fluted and waved.

King Edward VII—Pure red. Very fine.

Constance Hinton—Pure white of enormous size.

Elfrida Pearson—Large, pale pink flower; young blooms have a distinct tint of buff.

Each of above—Packet 10c; ½ oz. 25c; 1 oz. 40c.

All Colors Mixed—Packet 10c; ½ oz. 20c; 1 oz. 35c; ¼ lb. \$1.00; 1 lb. \$3.00.

Grandiflora Mixed—Includes only the best of the older varieties of Sweet Peas. Packet 5c; 1 oz. 15c; ¼ lb. 40c; 1 lb. \$1.40.

SALVIA—SCARLET SAGE

Bonfire (Clara Bedman)—Packet 10c; ½ oz. 50c.

Splendens—The old favorite bedding variety. Scarlet flowers in great profusion on plants 3 ft. high. Packet 10c; ½ oz. 40c.

BACHELOR'S BUTTON

Mixed Single and Double—Packet 5c.

NASTURTIUM

The Dwarf Nasturtiums really are the garden's most brilliant flowers, including the shades of deepest red, fiery scarlet, rich gold and brilliant yellow. Sow seed in the open ground where the plants are to bloom.

Dwarf Varieties in splendid mixture—Packet 5c; 1 oz. 20c; ¼ lb. 60c.

CLIMBING NASTURTIUMS

Many named varieties in splendid mixture. Packet 5c; 1 oz. 20c; ¼ lb. 60c.

ZINNIA

Giant Double Mixed—A distinct race of Giant Zinnia. Colors include all the shades of the Zinnias. Mixed colors—Packet 15c; ¼ oz. 40c.

Curled and Crested, Mixed—An extra-fine strain of Zinnias, with petals curled and twisted in peculiar forms. Colors include all the shades of the Zinnias. Mixed colors—Packet 10c; ¼ oz. 35c.

**SEEDS OF EVERLASTING
FLOWERS**

STRAW-FLOWER (or Helichrysum)

Fire Ball—Deep crimson. Packet 10c.

Golden Ball—Yellow. Packet 10c.

Silver Ball—Silvery white. Packet 10c.

Rose Queen—A beautiful shade of old rose. Packet 10c.

Salmon Queen—A pronounced shade of salmon-pink. Packet 10c.

Violet Queen—Deep violet. Packet 10c.

One Packet each of above six colors, 50c; ¼ oz. 35c.

Mixed Colors—Packet 10c; ¼ oz. 25c.

FLOWERING PERENNIALS

COREOPSIS

Grandiflora—Bright golden flowers; first produced in June and continuing till frost. Plants 2 feet high. Packet 10c; ¼ oz. 50c.

DOUBLE DAISY

Seed of the English Daisy may be sown from June to August and will produce flowering plants for the following spring.

Mixed Colors—Packet 10c; 1/16 oz. 40c.

DIGITALIS

Old-time favorites, and desirable for a background in the hardy garden. Flowers are bell-shaped and from 2 to 3 inches long.

Mixed Varieties and Colors—Packet 10c.

HOLLYHOCKS

Pink, rose, scarlet, yellow, maroon, crimson and white. Packet 10c; ¼ oz. 50c.

Mixed Varieties and Colors—Packet 10c; ¼ oz. 50c.

GYPSOPHILA PANICULATA

Baby's Breath—White flowers in July and August. Packet 10c.

PERENNIAL PEAS

The hardy flowering Peas will climb from 6 to 8 feet in a season. The flowers are borne in large clusters on long stems.

Mixed Colors—Packet 10c; ¼ oz. 25c.

SHASTA DAISY

Alaska—Everybody knows this plant, with its pure white flowers. Packet 10c.

SWEET WILLIAM

Single Varieties—Mixed Colors Packet 10c

Double Varieties—Mixed Colors Packet 10c

POPPY

Iceland—Mixed Colors—Packet 10c.

Orientele—The brilliant "Oriental Poppy," with immense flaming flowers of orange-scarlet. Packet 10c.

PRIMROSE

Auricula—Mixed Colors—Packet 15c.

Elatior—Mixed Colors—Packet 10c.

Vulgaria—The old familiar English primrose—Packet 10c.



ALLEN L. WOOD, Rochester, N.Y.

ORDER SHEET— IN ORDERING VEGETABLES AND FLOWER SEED PLEASE USE THIS SHEET

WOODLAWN NURSERIES, ROCHESTER, N. Y.
Make Money Orders Payable to Allen L. Wood

VERY IMPORTANT—No matter how many times you have written to us before, always give your name and address in full. More order blanks will be sent upon request. ALWAYS WRITE LETTERS ON A SEPARATE SHEET OF PAPER.

Name _____ Check - - \$ _____
 Street _____ P. O. Order _____
 Post Office _____ Draft - - - _____
 County _____ State _____ Cash or Stamps _____

Be sure to give the name of Express Office if desired by Express; or Freight Station if desired by Freight. Also name your Post Office address, too.

Express Office _____ Freight Station _____
 Express Co. _____ Railroad _____

PRICES IN THIS CATALOG SUPERSEDE THOSE OF ALL FORMER EDITIONS

Bu.	Pks	Qts.	Lbs.	Oz.	Pkg.	NAME OF SEEDS WANTED	Total	Price

OUR SUCCESS IS PROOF THAT WE SATISFY OUR CUSTOMERS



This is a view in our Nursery, showing the wonderful growth of our Shrubbery. We have over one-half million Shrubs of different varieties growing on this farm. They are the largest and best to be found anywhere. It will pay you to plant "WOOD'S QUALITY STOCK."



One of our fields of 125,000 California Privet. The finest lot grown in the country

AMERICAN * INSTITUTE * OF * NEW * YORK.

CERTIFICATE
OF MERIT

AWARDED TO

Dr. J. Warren Worcester,

New Seedling Peach Worcester
October 8th 1898

W. T. Phelps
Secretary

Joseph J. Latta
President

In 1898 Dr. Worcester sent a basket of his seedling Peaches to the American Institute of New York and they were so well pleased with them that they sent him this Certificate of Merit.