

Reserve  
79847M



U. S. DEPT. OF AGRICULTURE  
NATIONAL AGRICULTURAL LIBRARY

MAR 20 1967

3

CURRENT SERIAL RECORDS

# CAREERS in SOIL CONSERVATION SERVICE

+

2

U. S. SOIL CONSERVATION SERVICE  
U. S. DEPARTMENT OF AGRICULTURE + 72  
MISCELLANEOUS PUBLICATION NO. 717



## Make Soil and Water Conservation Your Career

- Enroll in the Nation's dynamic action program to protect and improve our soil and water resources.
- Dedicate your training, abilities, and enthusiasm to work that is vital to the welfare of all Americans.
- Help solve the basic conservation problems of the Nation's farms and ranches and upstream watersheds.
- Enjoy the satisfaction that comes from public service in a great cause along with the opportunity for personal advancement.

BE A PROFESSIONAL CONSERVATIONIST  
IN THE SOIL CONSERVATION SERVICE

*Soil Conservation Service needs*  
CAREER PERSONNEL

Trained in

Soil Conservation • Range Conservation

Engineering • Agronomy

Soils • Biology

Economics • Geology

Woodland Conservation • and related sciences  
(Forestry)

*Soil Conservation Service offers*

- Creative, challenging outdoor work.
- On-the-job training by recognized authorities in the science of soil and water conservation.
- A promotion-from-within policy that assures opportunity for advancement.
- The advantages of Federal civil service employment.
- Opportunity to gain broad experience in all phases of soil and water conservation or to specialize in one technical field.

# What the Soil Conservation Service Does

The Soil Conservation Service is the Department of Agriculture's technical arm of action for soil and water conservation. Basic jobs of the Service are:

- A national soil and water conservation program through soil conservation districts organized under State law and controlled by farmers and ranchers.
- Watershed protection and flood prevention.
- The national cooperative soil survey.
- Flood-damage reduction in 11 major watersheds.
- Snow surveys for water-supply forecasting in the West.
- Administrative leadership of the Great Plains conservation program.

KAN-1518





NEB-2111

## Soil Conservationist

Helps local people in rural and rural-fringe areas prepare conservation development plans for communities and individual operating units to meet local needs. Gives on-site and consultive technical assistance in carrying out planned conservation improvements.

Qualifications.—A college degree with major study in soil conservation or a related agricultural science.

## Range Conservationist

Helps ranchers and other range users to determine the suitability of their land for production of native forage and other plants for livestock, wildlife, and recreation and to develop conservation plans to improve the condition of their ranges. Gives onsite technical assistance to landowners on range inventories, proper forage utilization, reseeding, brush control, water development, and system of grazing.

Qualifications.—College degree with major study in range management or range conservation with specified courses outlined in the examination announcement.



MONT-320

## Soil Scientist

Collects information about the soil through examination, and records the information on maps and as field notes. Presents the information for use by farmers and ranchers, urban planners, and technical specialists in other fields.

Qualifications.—A college degree with major study in soil science or a closely related field of study with 30 semester hours of course work in the biological, physical, and earth sciences including a minimum of 15 semester hours in soils.

TEX-49,886



# Engineer

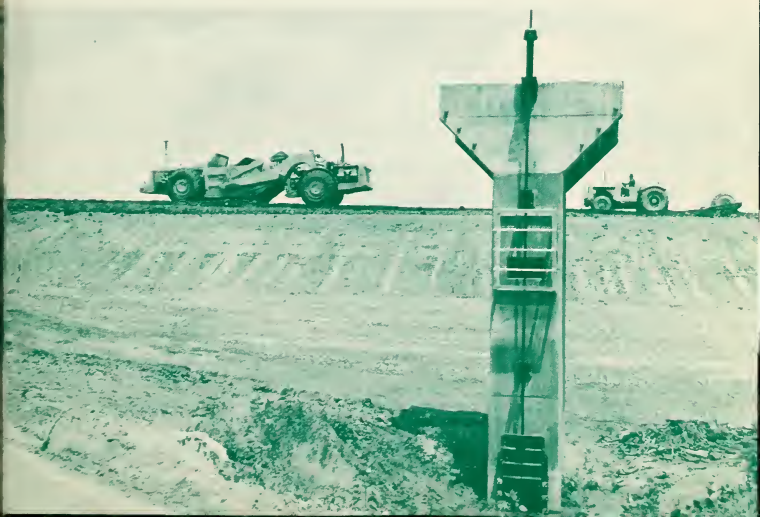
Plans, designs, and supervises construction of: earth fill and reinforced-concrete dams for flood prevention and water supply; streambank-protection and channel-stabilization work; chutes, drops, spillways, diversions, waterways, and terraces for erosion control and water conservation; and irrigation and drainage systems involving canals, pipelines, pumping plants, and appurtenant structures. Makes hydrologic studies and prepares soil mechanics reports on foundation and earth embankment materials.

Qualifications.—College degree in engineering with major emphasis on hydraulics, hydrology, structural design, drainage, or irrigation.

TEX-49,881



W VA-122



## Employment Facts

*Information.*—Ask your college placement officer or postmaster, or write to the nearest Soil Conservation Service office for the announcement of the SCS examination in which you are interested and an application blank.

*How to apply.*—If you have the right qualifications, fill out the application (Form 57) carefully, and mail it as directed in the announcement.

*Work locations.*—You may work at any one of several thousand locations in mainland United States or at some location in Hawaii, Alaska, Puerto Rico, or the Virgin Islands. Your college placement officer will have a list of the main offices of SCS where you can get additional information.

*Training.*—SCS provides excellent opportunities for intensive and specialized training under competent, experienced technical men, both on the job and in group training centers.

*Advancement.*—SCS has an organized promotion-from-within policy. There is continuous flow upward through the ranks.

*Benefits.*—SCS employees are under Federal civil service. Advancement is based wholly on merit. They are eligible for many benefits, such as sick and annual leave, periodic salary increases, group life and health insurance at a nominal rate, disability compensation if injured in line of duty, and liberal retirement annuities.

4  
[Revised January 1967] //

5b  
☆ U.S. GOVERNMENT PRINTING OFFICE: 1966—O 231-786  
5c

For sale by the Superintendent of Documents, U.S. Government Printing Office, Washington, D.C. 20402—Price 10 cents //





CAL-6921

## Plant Materials Specialist

Brings together plants from many sources for conservation uses. Tests and evaluates these plants to determine adaptation, erosion control, and soil improving values. Determines the cultural requirements and the management practices necessary for success. Increases selected plants for such specialized uses as pond margins, ground cover, forage, sand dunes, wind barriers, wildlife food and shelter, and turfs and screens on land used for recreation.

Qualifications.—A college degree with a major in agronomy, range conservation, or other plant science.

## Agronomist

Provides technical guidance on agronomic problems to SCS employees, and to land owners and operators who are carrying out soil and water conservation programs. Interprets soil and crop experimental data for field use of SCS personnel and land owners and operators who are planning and applying conservation plans. Conducts field trials to evaluate adaptability and handling of grasses and legumes useful in soil and water conservation. Determines methods of establishing herbaceous vegetation for soil and water conservation purposes.

Qualifications.—A college degree with major study in agronomy or a closely related field with specific courses described in the examination announcement.



NJ-40,457

## Biologist

Provides guidance and training to SCS employees in biological principles and practices that make cropland, grazing land, woodland, and farm or ranch water more productive of fish and wildlife. Develops biological practices and standards, converts new knowledge into technical recommendations, and assembles and makes available other information relating to agricultural fish and wildlife for the use of SCS employees and land owners and operators.

Qualifications.—A college degree with at least 30 semester hours in biological science with specific course work as described in the examination announcement.

## Woodland Conservationist

Gives technical guidance, training, and other assistance in woodland conservation to SCS employees and soil and water conservation district cooperators. Develops technical standards in forestry in collaboration with other forestry agencies for use of SCS employees who provide assistance to land owners and operators in the conservation of their woodlands as part of coordinated soil and water conservation programs for their land. Interprets forestry techniques and experimental data for field use. Helps to evaluate soil-tree relationships and determine woodland-conservation practices in relation to specific soil or site conditions.

Qualifications.—A college degree with major study in forestry.



TEX-47,898

## Geologist

Investigates and interprets surface and subsurface conditions in relation to: design and construction of engineering structures; ground water—supply, management, and recharge; sediment—yield, sources, damage, and control.

Qualifications.—A college degree with specified courses in geology as described in the examination announcement.

## Economist

Participates in planning watersheds, river basins, and other natural resource areas. Estimates benefits and costs of works of improvement; allocates costs and determines economic justification of plans for flood prevention, irrigation, drainage, municipal and industrial water supply, recreation, and other types of resource development projects. Collects, analyzes, and interprets cost and return data for conservation measures applied on farms and ranches.

Qualifications.—A college degree in economics plus specific courses outlined in the examination announcement.



IDA-25,174

## Conservation Aid

Helps professional conservationists work up conservation farm plans. Helps farmers and ranchers establish measures called for in conservation plans.

Qualifications.—Experience in conservation farming. Farm or ranch background required.

## Engineering Aid

Helps engineers with surveys, plotting notes, layout work in the field, and inspection of construction operations.

Qualifications.—Experience on survey crews running levels and transits; work on construction, layout, and inspection.

DEL-10,321





