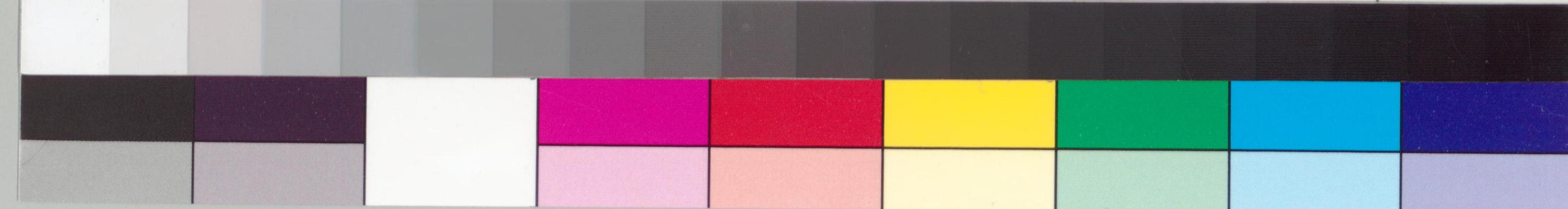


Handwritten text in Japanese calligraphy on aged paper. The text is arranged in vertical columns and is significantly faded. A small red square seal is visible in the upper left corner of the document.



以後及今と  
祝しと

貴方の世のまほしゆるめでたき  
長世久君う代のうへ

平角張り格



Vertical handwritten text in Japanese, likely a document or letter, written in a cursive style. The text is faint and difficult to read. A red seal is visible at the top left of the document.

