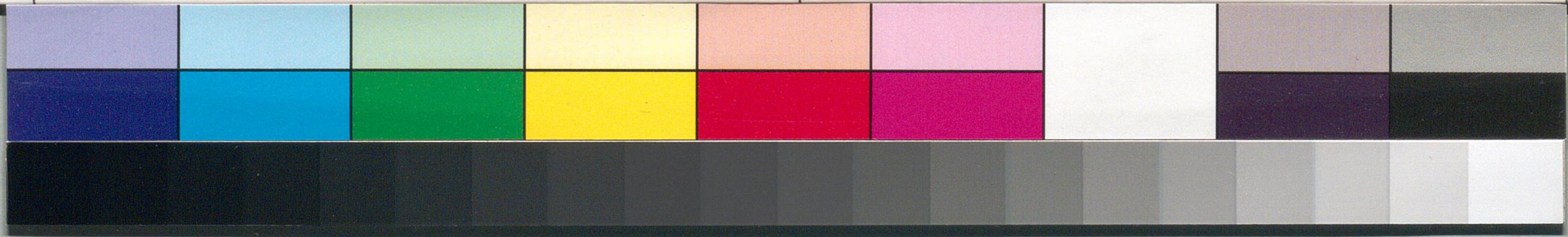
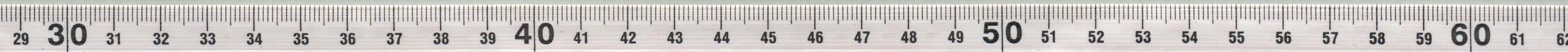


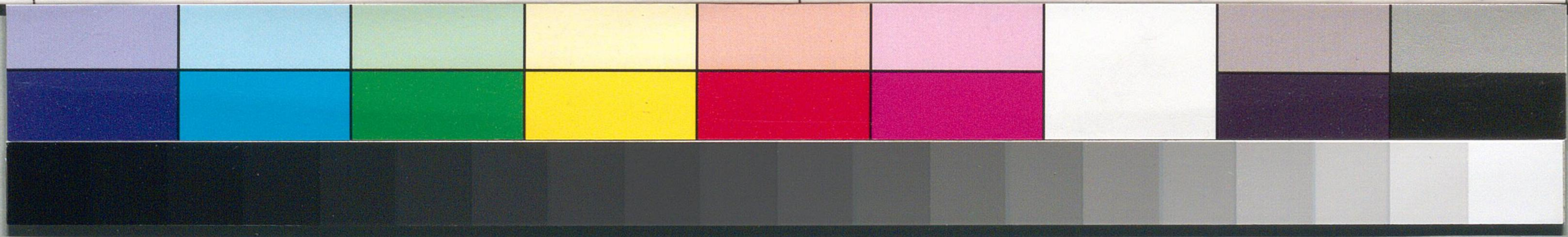
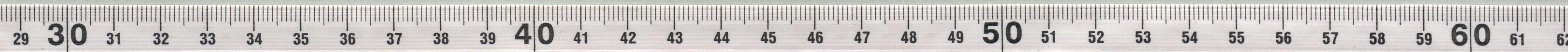


川村正平
川村正平
川村正平



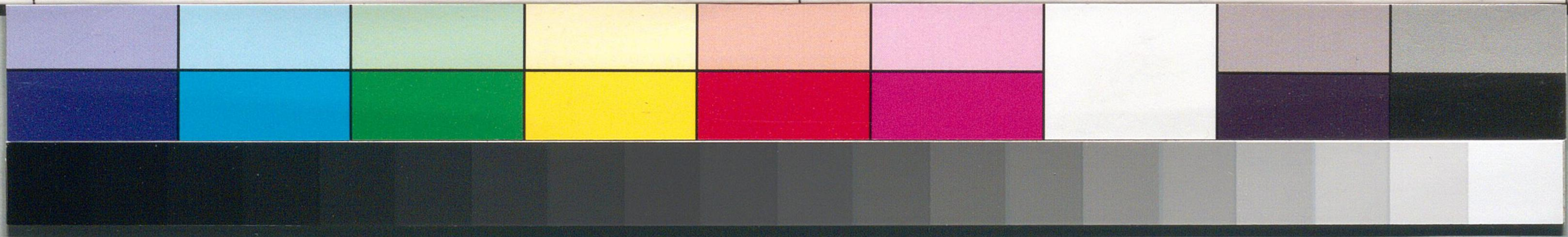
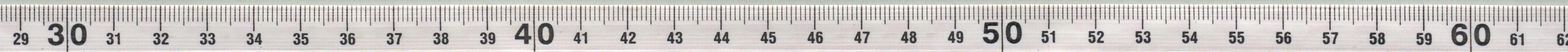
国立国会図書館 川村正平関係文書 93-2

川村正平の書
手紙の封筒



国立国会図書館 川村正平関係文書 93-2

288
Handwritten text in cursive script, likely a letter or document fragment, written on aged paper. The text is oriented vertically and appears to be a mix of Japanese and possibly English or Latin characters, though the script is highly stylized and difficult to decipher. The paper is yellowed and shows signs of wear.



国立国会図書館 川村正平関係文書 93-2

