

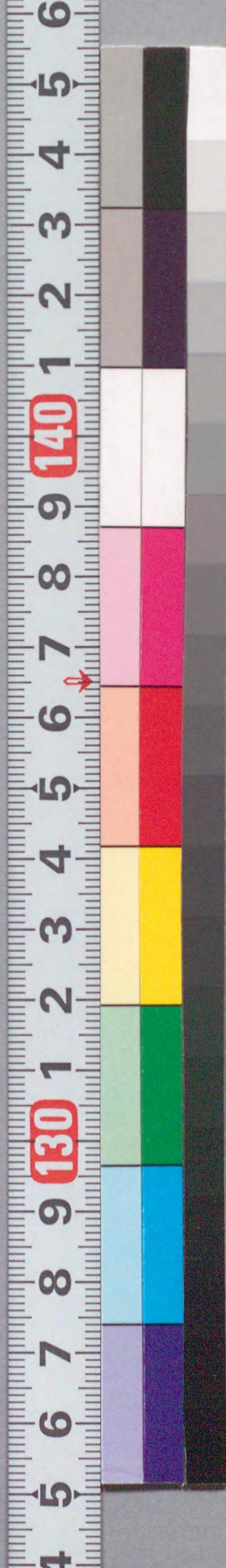


207
845

女模様稲妻染

六百拾五

国立国会図書館 女模様稲妻染 6巻 207-845



ガラス使用





柳亭種彦作

全六冊西与板

卯川重言画

女模様稻妻染序

馬喰町丁目西村屋主人板行

稲妻と云ふは山東に輝く西村の雷に似たり... 女字の業と女の又平若と無との違分にて... 陰謀討ふ知りてまはれ世計... 草履の遺恨... 作らえて凡情ぬるる...

文化十二年丙子孟春

柳亭種彦識

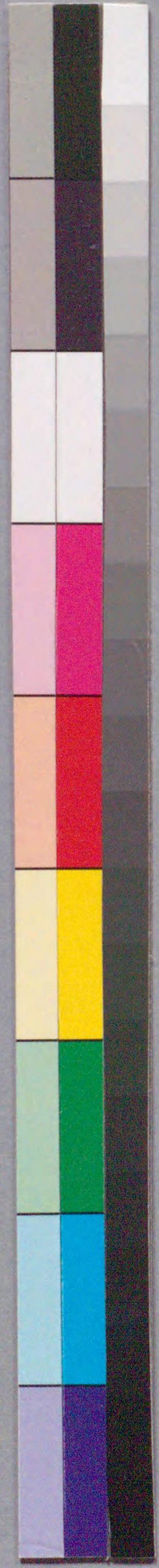






○ 鹿考が妹
再筆

○ 名古屋が
下部鹿藏





和門が子
梅津
高城之助

名百屋が娘
於三

不破宗大が
娘
繁屋





傾我
遠山の
幽魂

箱の



熊野の三山

不破
宗大

兼光の
新



前編中冊

あつたん



発端











前編下冊

Handwritten text in a vertical column on the left page, likely a preface or introductory text.





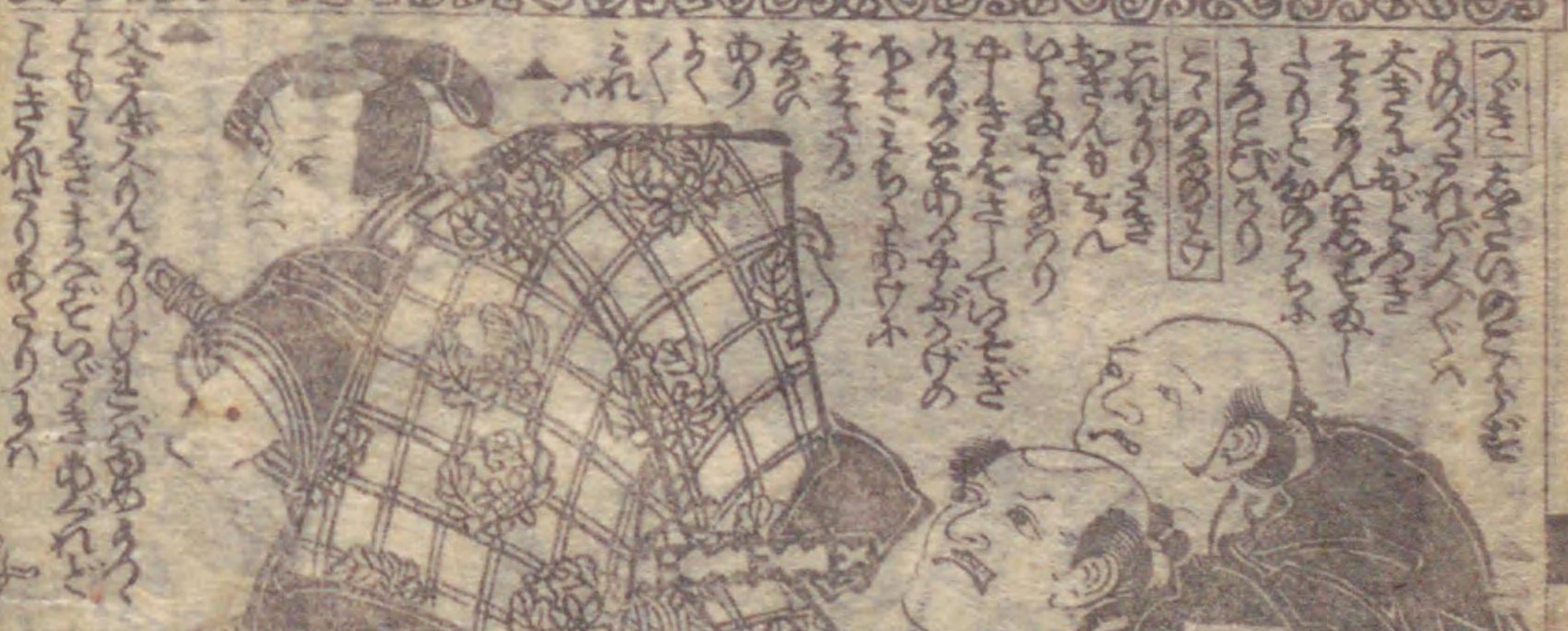




Handwritten text in a cursive style, likely a preface or introductory text, located above the main illustration on the left page.



Handwritten text in a cursive style, likely a preface or introductory text, located below the main illustration on the left page.



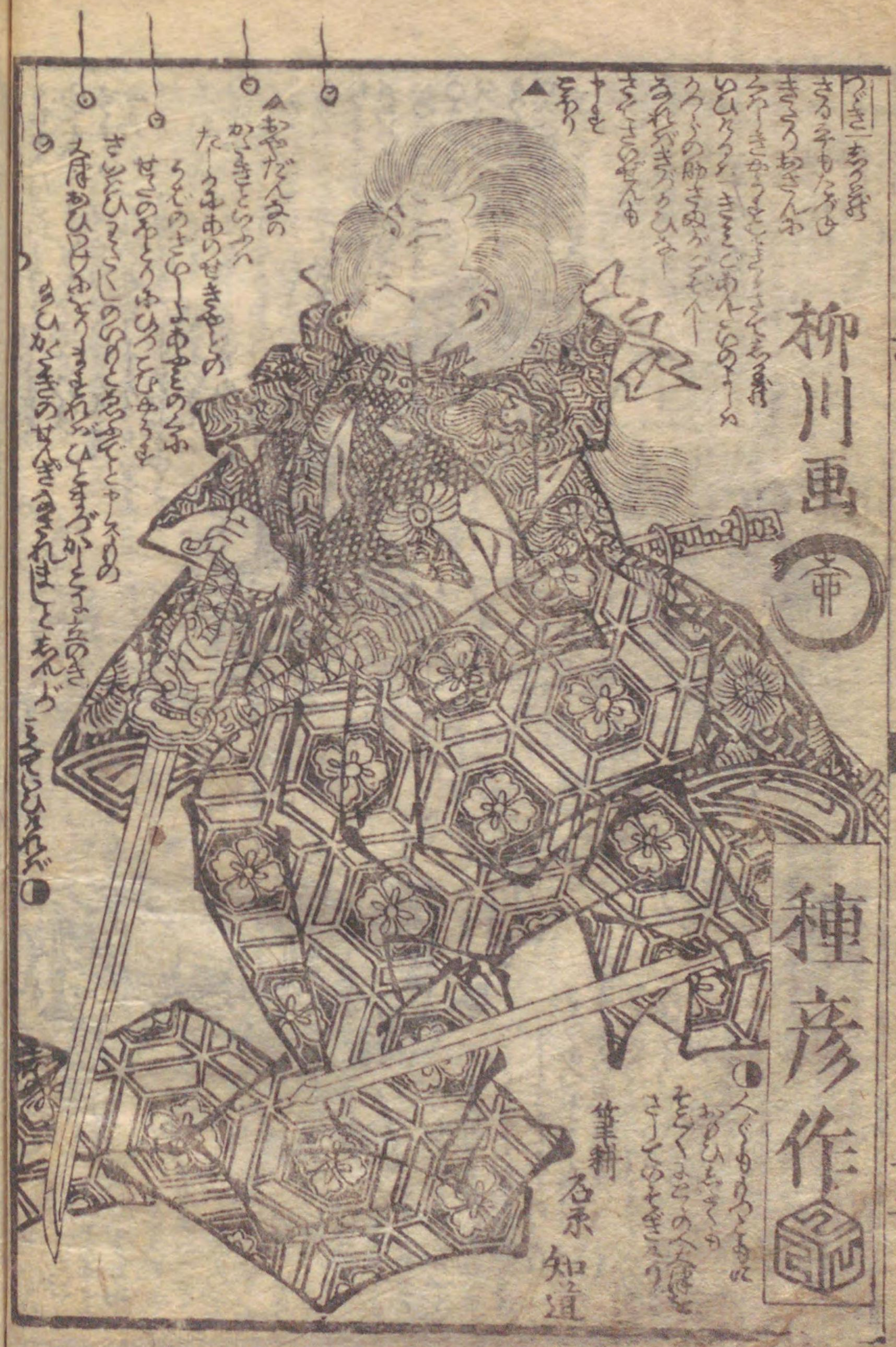
Handwritten text in a cursive style, likely a preface or introductory text, located below the main illustration on the right page.







Handwritten Japanese text on the left page, including the characters 柳川 (Yanagikawa) and 種彦 (Tanehiko).



柳川 画



種彦 作

筆耕 名承 知道

Vertical handwritten text on the right side of the illustration, possibly a commentary or a list of related items.



後編上冊



稻津 満 後編

柀亭 種彦 作



新刊 帝





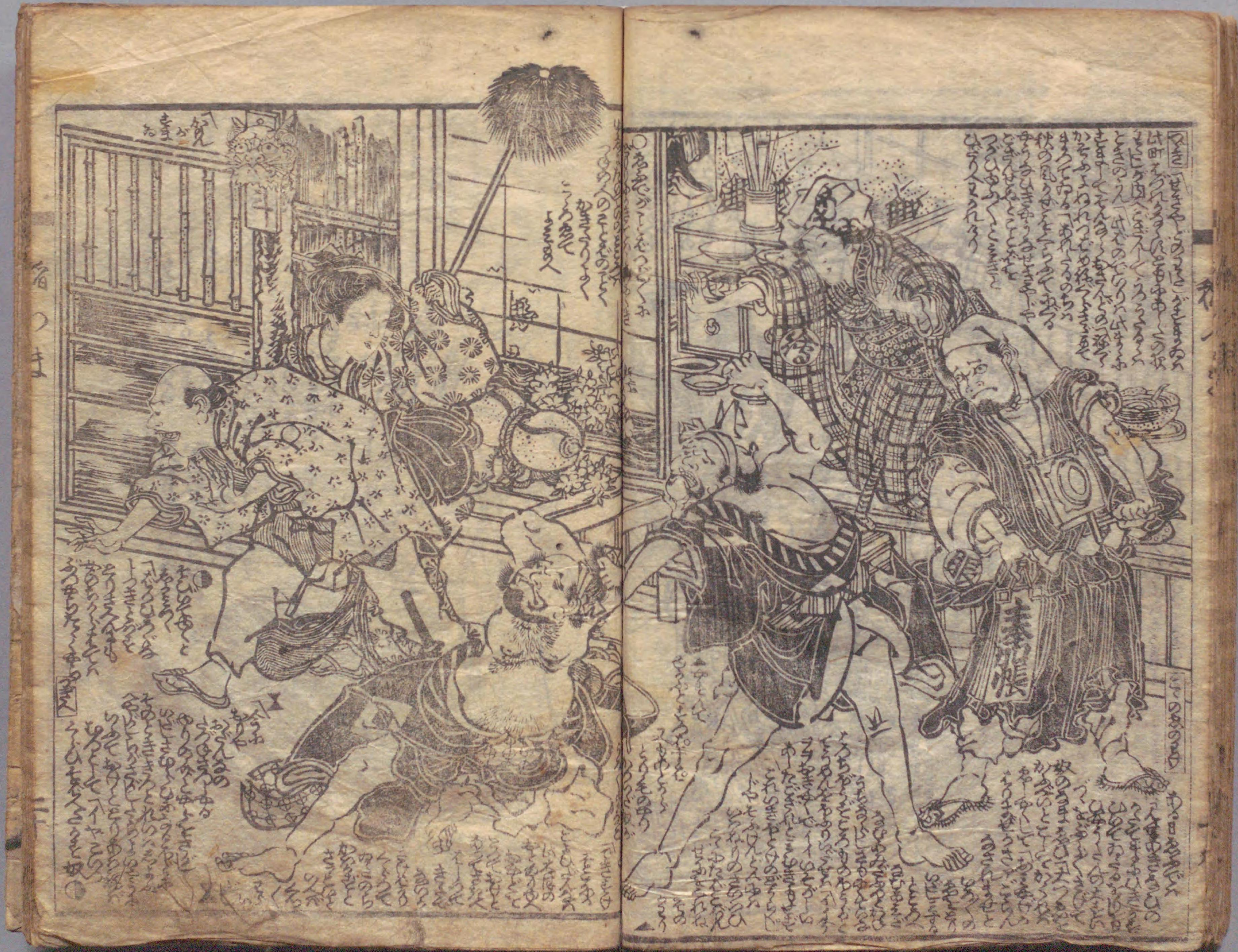
Handwritten text in a cursive script, likely a form of Japanese calligraphy, surrounding the illustration of a woman in traditional dress. The text is arranged in vertical columns, with some characters appearing to be decorative or specific to the illustration's theme.



Handwritten text in a cursive script, likely a form of Japanese calligraphy, surrounding the illustration of a woman in traditional dress. The text is arranged in vertical columns, with some characters appearing to be decorative or specific to the illustration's theme.













Handwritten Japanese text in the upper left corner of the left page, including a small square seal.

Handwritten Japanese text in the middle left of the left page, including a small square seal.

Handwritten Japanese text in the lower right corner of the left page.



Large block of handwritten Japanese text on the right page, continuing the narrative or providing commentary.





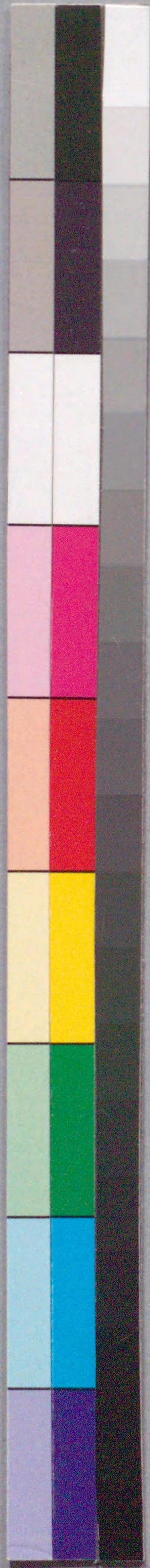
後編下冊











国立国会図書館

女模様稲妻染 6巻 207-845



ガラス使用

