

19

# Plan of

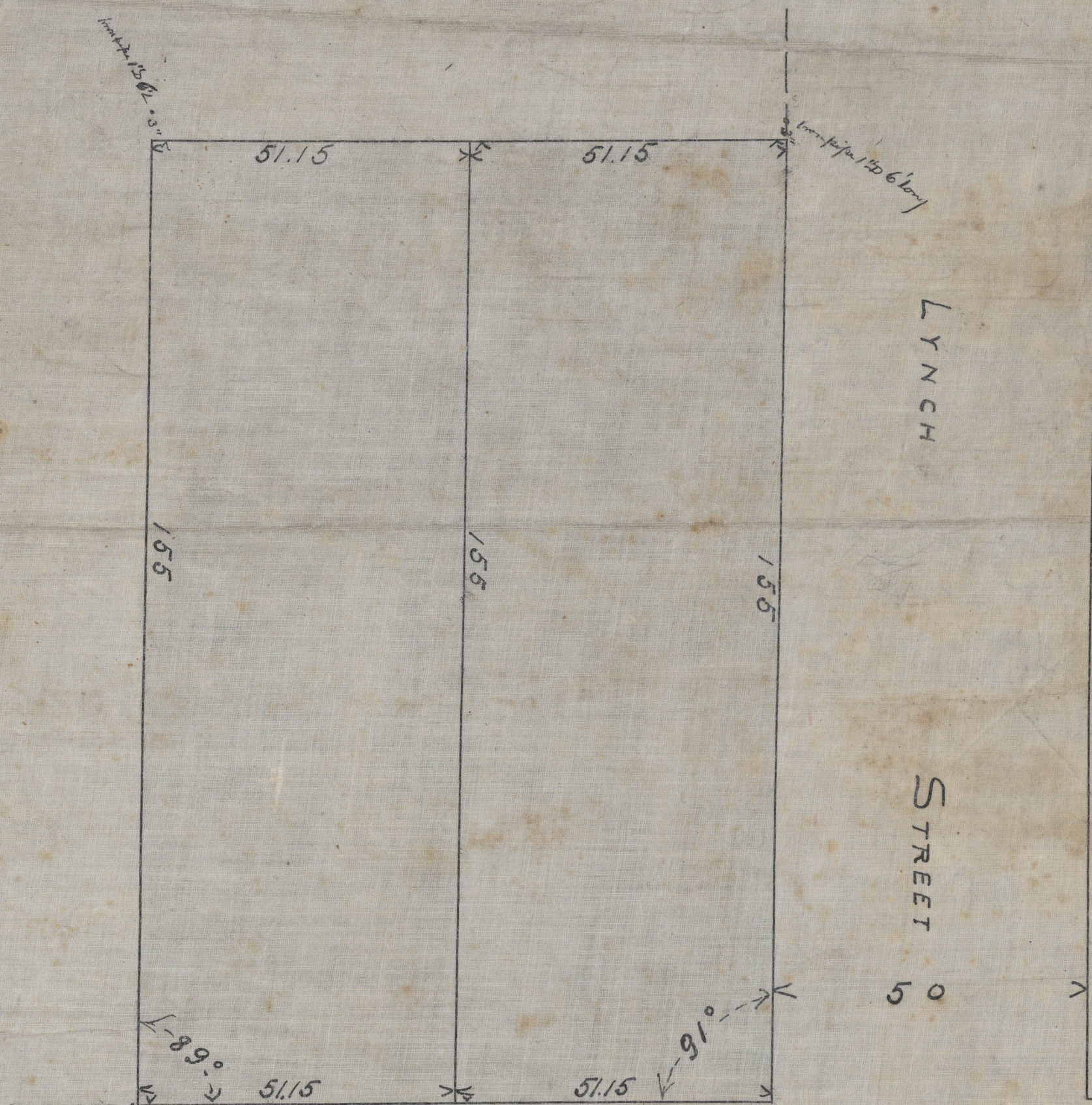
## TWO LOTS - CITY OF CHARLESTON

Surveyed February 4<sup>th</sup> 1892

FOR MR ~~BERKLEY~~ GRIMBALL

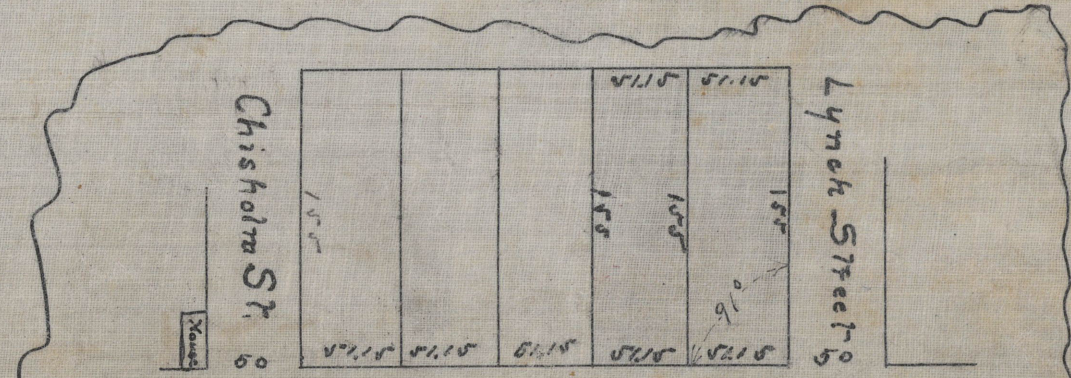
Scale 20 ft. Per Inch

(Signed) S. Lewis Simmons  
C.E. & Surveyor



TRADD

STREET



Scale 100 ft. Per Inch TRADD STREET  
 City Engineer's Office  
 Base of brick pillars of Alston's wall is on line of Tradd Street also style of house at cor of Chisholm & Tradd Streets  
 R. H. Morris

Office Copy