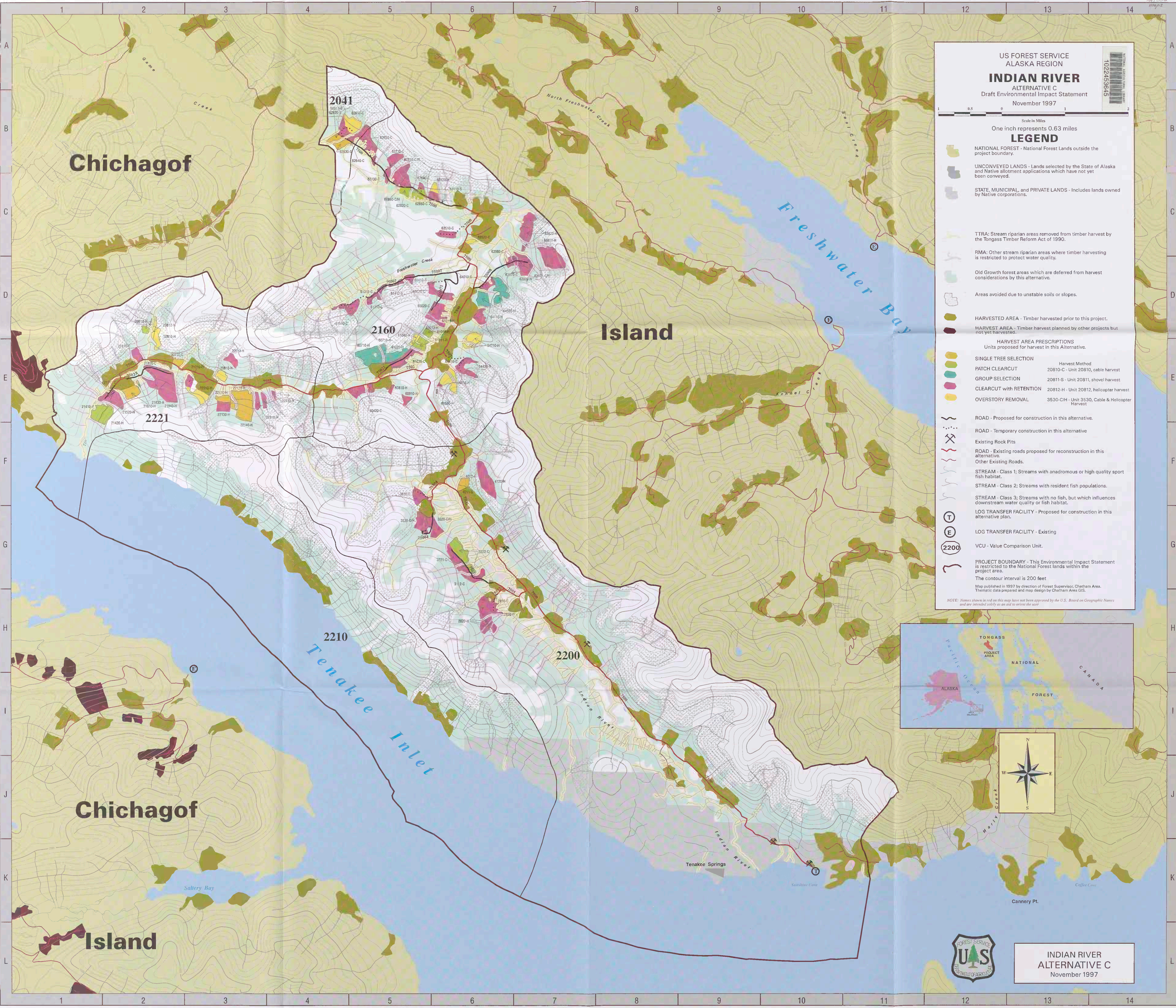
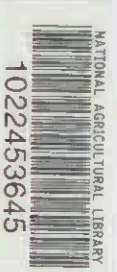


Historic, archived document

Do not assume content reflects current scientific knowledge, policies, or practices.



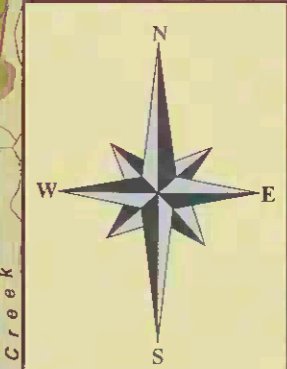
US FOREST SERVICE
ALASKA REGION
INDIAN RIVER
ALTERNATIVE C
Draft Environmental Impact Statement
November 1997



Scale in Miles
One inch represents 0.63 miles

LEGEND

- NATIONAL FOREST - National Forest Lands outside the project boundary.
- UNCONVEYED LANDS - Lands selected by the State of Alaska and Native allotment applications which have not yet been conveyed.
- STATE, MUNICIPAL, and PRIVATE LANDS - Includes lands owned by Native Corporations.
- TTRA: Stream riparian areas removed from timber harvest by the Tongass Timber Reform Act of 1990.
- RMA: Other stream riparian areas where timber harvesting is restricted to protect water quality.
- Old Growth forest areas which are deferred from harvest considerations by this alternative.
- Areas avoided due to unstable soils or slopes.
- HARVESTED AREA - Timber harvested prior to this project.
- HARVEST AREA - Timber harvest planned by other projects but not yet harvested.
- HARVEST AREA PRESCRIPTIONS**
Units proposed for harvest in this Alternative.
- SINGLE TREE SELECTION
- PATCH CLEARCUT
- GROUP SELECTION
- CLEARCUT with RETENTION
- OVERSTORY REMOVAL
- ROAD - Proposed for construction in this alternative.
- ROAD - Temporary construction in this alternative.
- Existing Rock Pits
- ROAD - Existing roads proposed for reconstruction in this alternative.
- Other Existing Roads.
- STREAM - Class 1: Streams with anadromous or high quality sport fish habitat.
- STREAM - Class 2: Streams with resident fish populations.
- STREAM - Class 3: Streams with no fish, but which influences downstream water quality or fish habitat.
- LOG TRANSFER FACILITY - Proposed for construction in this alternative plan.
- LOG TRANSFER FACILITY - Existing
- VCU - Value Comparison Unit.
- PROJECT BOUNDARY - This Environmental Impact Statement is restricted to the National Forest lands within the project area.
The contour interval is 200 feet.



INDIAN RIVER
ALTERNATIVE C
November 1997