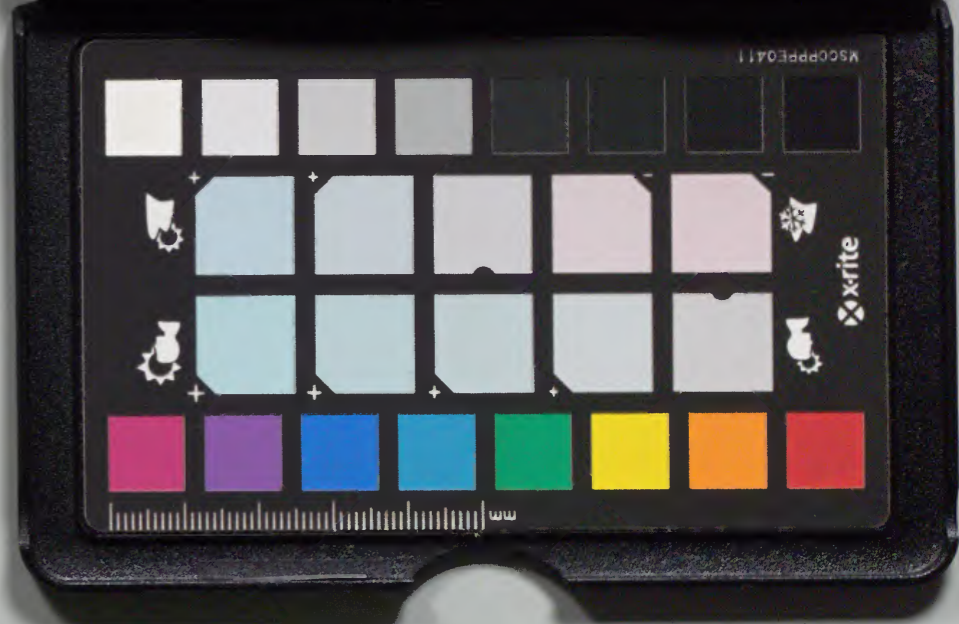
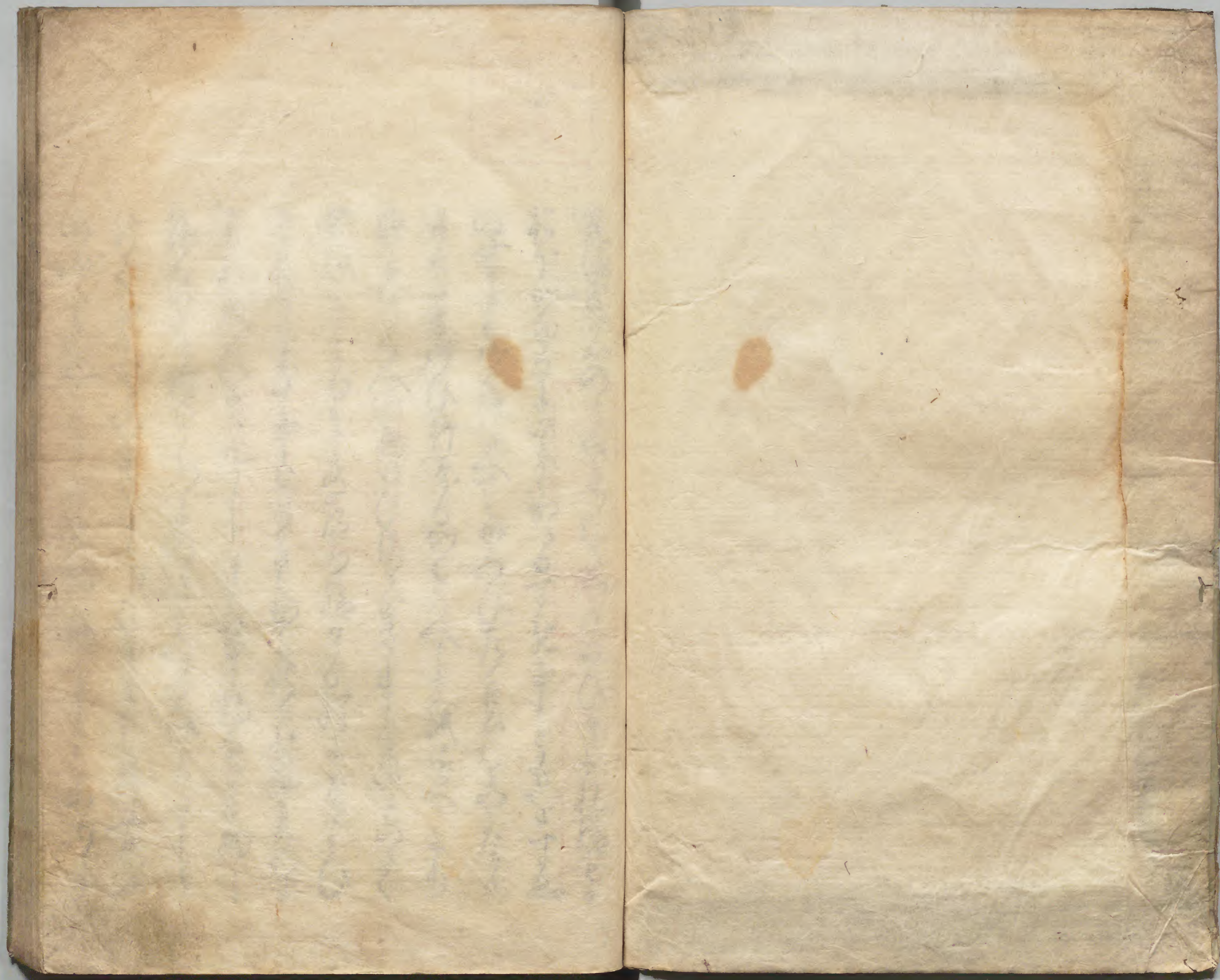


第本

| | | | |
|------|-----|----|---|
| 庫文閣内 | | | |
| 三〇三 | 二四八 | | 和 |
| 函 | 五九 | | 書 |
| 二架 | 一三 | 號類 | |

| | | |
|------|-----|-------|
| 和書 | | |
| 二四八 | | |
| 一 | | |
| 五 | | |
| 内閣文庫 | | |
| 番號 | 和 | 24893 |
| 冊數 | 51 | (2) |
| 函號 | 203 | 1 |





Handwritten text in a cursive script, likely a historical document or manuscript. The text is written in black ink on aged, yellowish paper. It consists of approximately 18 lines of text, with some lines starting with a red mark or initial. The script is dense and characteristic of historical East Asian calligraphy.

Handwritten text in a cursive script, likely Mongolian or Tibetan, consisting of approximately 15 lines of text.

Handwritten text in a cursive script, likely Mongolian or Tibetan, consisting of approximately 15 lines of text.

Handwritten text in a cursive script, likely a form of Arabic or Persian calligraphy. The text is arranged in two columns on each page, with some red markings interspersed. The script is dense and flowing, characteristic of historical Islamic manuscripts. The text is written on aged, slightly yellowed paper.

Handwritten text in a cursive script, likely Mongolian or Tibetan, spanning the right page of the manuscript. The text is written in black ink on aged, yellowish paper. There are several red ink markings, possibly initials or corrections, scattered throughout the script.

Handwritten text in a cursive script, likely Mongolian or Tibetan, spanning the left page of the manuscript. The text is written in black ink on aged, yellowish paper. There are several red ink markings, possibly initials or corrections, scattered throughout the script.

Handwritten text in a cursive script, likely a historical document or letter. The text is written in black ink on aged paper. It consists of approximately 15 lines of text, with some red ink used for initials or specific characters. The script is highly stylized and characteristic of the Edo period.

Handwritten text in a cursive script, continuing from the previous page. It consists of approximately 15 lines of text, with some red ink used for initials or specific characters. The script is highly stylized and characteristic of the Edo period.

Handwritten text in a cursive script, likely a historical document or manuscript, spanning two pages. The text is written in black ink on aged, yellowish paper. The script is dense and continuous across both pages, with some red ink used for decorative or emphasis purposes. The text is written in a style characteristic of historical documents from the region, possibly related to the Meiji Restoration period.

Handwritten text in a cursive script, likely a historical document or manuscript. The text is written in black ink on aged paper. There are several lines of text on each page, with some red ink markings or corrections interspersed throughout. The script is dense and characteristic of historical Persian or Arabic manuscripts.

Handwritten text in red ink, possibly a date or a specific reference, located at the bottom of the page.

Handwritten text in a cursive script, likely a historical document or manuscript. The text is written in black ink on aged paper. Several characters are marked with red dots, possibly indicating specific points of interest or corrections. The script is dense and fills most of the page.

Handwritten text in a cursive script, continuing from the previous page. The text is written in black ink on aged paper. Several characters are marked with red dots, possibly indicating specific points of interest or corrections. The script is dense and fills most of the page.

Handwritten text in a cursive script, likely Persian or Arabic, with several red ink markings and dots interspersed throughout the lines.

Handwritten text in a cursive script, likely Persian or Arabic, with several red ink markings and dots interspersed throughout the lines.

Handwritten text in a cursive script, likely a historical document or manuscript. The text is written in black ink on aged, yellowish paper. The script is dense and fills most of the page. There are several red ink markings, possibly initials or decorative elements, interspersed throughout the text. The text is arranged in a single column on each page, with some lines starting with a small red dot. The overall appearance is that of a well-preserved historical document.

Handwritten text in a cursive script, likely a form of Arabic or Persian calligraphy. The text is arranged in approximately 15 horizontal lines across the page. Several characters are highlighted in red ink, possibly indicating specific words or initials. The script is dense and fluid, characteristic of historical Islamic manuscripts.

Handwritten text in Arabic script, likely a manuscript or letter, spanning two pages. The text is written in black ink on aged, yellowish paper. Red ink is used for certain decorative elements, including dots and small flourishes. The script is dense and fills most of the page area.

Handwritten text in Arabic script, likely a manuscript or letter, spanning two pages. The text is written in black ink on aged, yellowish paper. Red ink is used for certain decorative elements, including dots and small markings, possibly indicating specific words or initials. The script is dense and fills most of the page area.

Handwritten text in a cursive script, likely a historical document or manuscript. The text is written in black ink on aged, yellowish paper. The script is dense and fills most of the page. There are several red ink markings, possibly initials or decorative elements, scattered throughout the text. The text is arranged in approximately 15 horizontal lines across the page.

Handwritten text in Arabic script, likely a manuscript or letter, written on aged paper. The text is arranged in approximately 15 horizontal lines across the page. The script is cursive and includes several red ink markings, possibly indicating specific words or corrections. The text is written in a right-to-left direction, typical of Arabic manuscripts.

Handwritten text in a cursive script, likely a historical document or manuscript. The text is written in black ink on aged, yellowish paper. The script is dense and continuous across both pages, with some red ink used for decorative or emphasis purposes. The text is arranged in approximately 15 horizontal lines per page, flowing from right to left. The characters are highly stylized and interconnected, characteristic of a cursive hand. There are several instances of red ink, including small dots and short strokes, which may indicate specific words or initials. The overall appearance is that of a well-preserved but aged historical record.

Handwritten text in a cursive script, likely a historical document or manuscript. The text is written in black ink on aged, yellowish paper. The script is dense and continuous across the page, with some red ink used for initials or corrections. The text is arranged in a single column, reading from right to left. The characters are highly stylized and interconnected, characteristic of a cursive hand. There are approximately 25 lines of text on the page. The paper shows signs of age, including some staining and discoloration. The overall appearance is that of a well-preserved historical manuscript.

Handwritten text in a cursive script, likely a historical document or manuscript. The text is written in black ink on aged, yellowish paper. The script is dense and flowing, with some red ink used for initials or corrections. The text is arranged in approximately 20 horizontal lines across the page. The characters are highly stylized and difficult to decipher without specialized knowledge of the script.

Handwritten text in a cursive script, likely a historical document or manuscript. The text is written in black ink on aged, yellowish paper. The script is dense and continuous across the page, with some red ink used for initials or specific characters. The text is arranged in a single column, reading from right to left. The handwriting is highly stylized and characteristic of a specific historical period or region.

Handwritten text in a cursive script, likely a form of shorthand or a specific dialect. The text is arranged in approximately 18 horizontal lines across the page. The script is dense and fluid, with many characters resembling loops and curves. Several characters are marked with small red dots, possibly indicating specific phonetic values or syllables. The overall appearance is that of a personal or working manuscript.

Handwritten text in a cursive script, likely a historical document or manuscript. The text is written in black ink on aged, yellowish paper. The script is dense and fills most of the page. There are several red ink markings, possibly initials or decorative elements, scattered throughout the text. The text is arranged in approximately 20 horizontal lines across the page.

Handwritten text in a cursive script, likely a historical document or manuscript. The text is written in black ink on aged, yellowed paper. The script is dense and continuous across both pages, with some red ink used for decorative or emphasis purposes. The text is written in a style characteristic of the Edo period in Japan, possibly a form of shorthand or a specific dialect. The characters are highly stylized and interconnected, typical of the 'sōsho' (cursive) style. The text is arranged in approximately 15 horizontal lines per page, with some variations in line length and spacing. The overall appearance is that of a well-used, historical manuscript.

Handwritten text in a cursive script, likely a form of Arabic or Persian calligraphy, spanning two pages. The text is written in black ink on aged, yellowish paper. Red dots are used as diacritics throughout the script. The writing is dense and fills most of the page area.

Handwritten text in a cursive script, likely a historical document or manuscript. The text is written in black ink on aged paper and includes several red ink markings, possibly indicating specific words or corrections. The script is dense and fills most of the page.

Handwritten text in a cursive script, likely a historical document or manuscript. The text is written in black ink on aged paper, with several red ink markings (dots and lines) interspersed throughout, possibly indicating specific characters or corrections. The script is dense and fills most of the page area.

Handwritten text in Arabic script, likely a manuscript or letter. The text is written in black ink on aged, yellowed paper. There are several lines of text, with some words or characters highlighted in red ink. The script is dense and cursive, characteristic of historical Arabic manuscripts. The text is arranged in approximately 15 horizontal lines across the page.

Handwritten text in a cursive script, likely a form of Arabic or Persian calligraphy. The text is arranged in approximately 15 horizontal lines across the page. Several characters are highlighted in red ink, possibly indicating specific words or initials. The script is dense and fluid, characteristic of historical Islamic manuscripts.

Handwritten text in a cursive script, likely a form of Arabic or Persian, written on two pages of an open manuscript. The text is arranged in approximately 15 lines per page. Red ink is used for decorative elements, including dots and small flourishes, particularly around the letters 'ayn' and 'ha'. The script is dense and fluid, characteristic of historical Islamic calligraphy.

Handwritten text in a cursive script, likely a form of Urdu or Persian, with red ink used for decorative elements and emphasis. The text is arranged in approximately 15 horizontal lines across the page. The script is highly stylized and fluid, characteristic of the 'Nasta'liq' style. Red dots and lines are interspersed throughout the black ink, highlighting specific characters or words. The paper shows signs of age, with some discoloration and wear at the edges.

Handwritten text in a cursive script, likely a form of Arabic or Persian calligraphy, written on two pages of aged paper. The text is arranged in vertical columns, reading from right to left. Red dots are visible throughout the script, possibly serving as markers or indicating specific characters. The ink is dark, and the paper shows signs of age and wear.

Handwritten text in a cursive script, likely a form of Arabic or Persian calligraphy. The text is arranged in approximately 15 horizontal lines across the page. Several characters are highlighted with red ink, possibly indicating specific words or initials. The script is dense and fluid, characteristic of historical Islamic manuscripts.

Handwritten text in a cursive script, likely a historical document or manuscript. The text is written in black ink on aged paper, with several red ink markings (dots and lines) interspersed throughout the lines. The script is dense and appears to be a form of Arabic or Persian calligraphy. The text is arranged in approximately 18 horizontal lines across the page.

Handwritten text in a cursive script, likely a historical document or manuscript. The text is written in black ink on aged, yellowish paper. The script is dense and continuous across the page, with some red ink used for decorative or emphasis purposes. The text is arranged in a single column on each page, with some lines starting with a small red mark. The overall appearance is that of a well-preserved historical record.

Handwritten text in a cursive script, likely a historical document or manuscript. The text is written in black ink on aged paper and includes several red ink markings, possibly indicating specific characters or words. The script is dense and fills most of the page area.

Handwritten text in a cursive script, likely a form of Arabic or Persian calligraphy. The text is arranged in approximately 20 horizontal lines across the page. Several characters are highlighted in red ink, possibly indicating specific words or initials. The script is dense and fluid, characteristic of historical manuscript writing.

Handwritten text in Arabic script, likely a manuscript or letter, spanning two pages. The text is written in black ink on aged, yellowish paper. Red ink is used for decorative dots and some initial letters. The script is a cursive style, possibly Maghrebi or similar. The text is arranged in approximately 20 horizontal lines across both pages.

Handwritten text in a cursive script, likely a form of Arabic or Persian calligraphy. The text is arranged in approximately 15 horizontal lines across the page. Several characters are highlighted with red ink, possibly indicating specific words or initials. The script is dense and fluid, characteristic of historical Islamic manuscripts. The paper shows signs of age, including some staining and discoloration.

Handwritten text in a cursive script, likely a form of Arabic or Persian calligraphy, spanning two pages. The text is written in black ink on aged, yellowish paper. Red dots are used as diacritics throughout the script. The writing is dense and fills most of the page area.

Handwritten text in a cursive script, likely a form of Arabic or Persian. The text is arranged in approximately 15 horizontal lines across the page. Several characters are highlighted with red ink, possibly indicating specific words or initials. The script is dense and fluid, characteristic of historical manuscripts.

Handwritten text in a cursive script, likely a form of Arabic or Persian. The text is arranged in approximately 15 horizontal lines across the page. Several characters are highlighted with red ink, possibly indicating specific words or initials. The script is dense and fluid, characteristic of historical manuscripts.

Handwritten text in a cursive script, likely Arabic or Persian, with several red ink markings (dots and lines) interspersed throughout the lines.

Handwritten text in a cursive script, likely Arabic or Persian, with several red ink markings (dots and lines) interspersed throughout the lines.

Handwritten text in a cursive script, likely Arabic or Persian, with several lines of text. The script is dense and flowing, with some red ink used for decorative elements or emphasis.

Handwritten text in a cursive script, likely Arabic or Persian, with several lines of text. The script is dense and flowing, with some red ink used for decorative elements or emphasis.

Handwritten text in a cursive script, likely Mongolian or Tibetan, with red ink used for initials or markers. The text is arranged in approximately 15 horizontal lines across the page.

Handwritten text in a cursive script, likely Mongolian or Tibetan, with red ink used for initials or markers. The text is arranged in approximately 15 horizontal lines across the page.

Handwritten text in Arabic script, likely a religious or historical document. The text is written in a cursive style with several red ink markings (dots) interspersed throughout the lines.

Handwritten text in Arabic script, continuing from the previous page. The text is written in a cursive style with several red ink markings (dots) interspersed throughout the lines.

Handwritten text in a cursive script, likely a historical document or manuscript. The text is written in black ink on aged, yellowish paper. It consists of approximately 15 lines of text, with some characters highlighted in red ink. The script is dense and flowing, characteristic of historical cursive writing. The text is arranged in a single column on the right page of the open book.

Handwritten text in a cursive script, likely a historical document or letter. The text is written on aged, yellowed paper and is oriented vertically on the right page of the open book. The script is dense and difficult to decipher due to its cursive nature and the fading of the ink. The text appears to be a single paragraph or a list of items, but the specific words are illegible.

