

GROWTH OF GLENDALE SHOWN IN POPULATION Total of 1910 was 2,742 For year 1920 was 13,350 Per cent increase 383 Today estimated at 50,000

The Glendale Evening News

GLENDALE, LOS ANGELES COUNTY, CALIFORNIA, THURSDAY, JULY 24, 1924

PROGRESS OF GLENDALE AS TOLD BY BUILDING Total for year 1921... \$ 5,090,201 Total for year 1922... 6,305,971 Total for year 1923... 10,047,601 Total for 1924 to date 5,675,063

VETERANS UNITE IN CELEBRATION

Ceremonies at Breaking of Ground for Patriotic Hall Are Planned

Veterans of American wars are to join Saturday afternoon in celebrating the breaking of ground for the new Los Angeles County Patriotic hall at 1816 South Figueroa street. Many Glendale members of the American Legion, Spanish War Veterans and Grand Army of the Republic will be present for the celebration, which is scheduled to begin at 3 o'clock.

The proposed building is being built as a memorial in appreciation of the services rendered to this country and especially to this county by the men of these three organizations.

J. H. Bean, whose untiring work has aided materially in bringing the plans to their present successful stage, says that it was finally decided that a beautiful building represented the ideal of progress and peace. It was this thought and the effort to express it that gave the county board of supervisors the idea for the memorial.

Asks Separate Order On Street Lighting

Councilman Hall introduced a motion in the City Council today that separate proceedings be instituted for the installing of an ornamental street lighting system along Colorado boulevard from San Fernando road to Glendale avenue, except between Brand boulevard and Central avenue, where street lights are already in.

The matter of allowing an arcade to be built over the sidewalk in a portion of the Sparr Heights tract along Verdugo road was again brought before the council this morning and after considerable discussion the matter was laid on the table until the session of Tuesday, August 5, when Virgil B. Stone, city manager, will have returned from his vacation.

Propose Payment to Slain Youth's Mother

A communication was read before the City Council today from Benjamin F. Dupuy, city engineer, requesting that Mrs. Ely, mother of Walter Ely of the engineering department, who met with a fatal automobile accident Sunday, July 20, be allowed one week's time and six days' sick leave, as permitted under the city charter. The letter stated that the engineering department has subscribed \$150 to be given Mrs. Ely, who is understood to be in need. The matter was referred to the city engineer.

Reduce P. E. Service To Save Electricity

A communication was read before the City Council today from the Pacific Electric company, stating that, in order to make the necessary cut in electricity requested by the power supervisor following the meeting of July 19, it will be necessary to reduce service on the Glendale line, during the midday period, from one car every fifteen minutes, as the present schedule provides, to one car every twenty minutes.

Ask Conference on Traffic Regulation

The Glendale Citizens' Traffic Commission will meet with the City Council at 8:30 o'clock Tuesday morning, July 29, to go further into the matter of local traffic regulation, it was decided this morning, after a letter addressed to the council by M. Walters, chairman of the commission, and requesting such a conference, was read by the city clerk.

PLAN ICE PALACE FOR LOS ANGELES

Glendale May Enter Amateur Hockey Team In Match If Completed

Ice skating and hockey tournaments will be the leading sport events in Los Angeles if plans now under way by the Los Angeles Ice Skating association materialize, according to B. P. Fisher of Coker & Taylor, and an amateur hockey team from Glendale will be entered in the tournament. Mr. Fisher is an ice star, having played in a number of championship matches.

During the season of 1916 and 1917, when the Seattle Hockey club won the world's title, Mr. Fisher was a member of the team. He played with Seattle three seasons, 1915-16, 1916-17 and 1917-18. He played with such stars as Lester and Frank Patrick, known throughout the sport world for their interests in hockey clubs. Frank Patrick is the president of the Pacific Coast Hockey association.

The ice palace proposed by the association should attract thousands of people to Los Angeles and be the center of activity for weeks from northern countries, where ice skating and ice sports mature the winter months. It is planned to install a refrigerating plant to keep the temperature within the building below freezing point at all times, so the ice will remain hard.

Favor Acceptance of Reservoir Site Offer

A motion was introduced in the City Council today by Councilman Kimlin requesting the city to accept the offer of the Wellman Commercial Trust & Savings bank of Los Angeles to sell for \$2500 a tract of land of over five acres, in the Glen Oaks tract, to be used for reservoir purposes. The motion was passed and the matter referred to the city attorney.

Verdugo Wash Absorbs Contraband Rum Flood

Quantities of highly alcoholic mixed drinks trickled down the thirsty throat of the Verdugo wash yesterday afternoon, final obsequies being in charge of Detective Sergeant H. A. Stanford of the Glendale police department. The mixture comprised twenty gallons of moonshine whisky, one quart of wine, two quarts of gin, and other sundry parcels of contraband liquor that had been seized by the department within the last few weeks.

Blaze In Automobile Yields to Chemicals

A touring car parked at the corner of Orange and Harvard streets suddenly burst into flames at 3 o'clock yesterday afternoon. The fire department rushed to the scene and extinguished the blaze with chemicals. The license certificate showed the owner to be J. W. Smith of Los Angeles. Damage was estimated by Chief A. H. Lawford to be approximately \$100.

Grand Army Veterans And W. R. C. to Picnic

Echo Park, Los Angeles, will be the destination tomorrow of members of the G. A. R. and Women's Relief Corps, who are to enjoy their annual picnic outing. Those attending are asked to bring basket lunches and dishes. Coffee will be served by the Corps. Mrs. Mary Bennet, president of the Corps, announces that after the 12 o'clock luncheon there will be an informal program.

Junior Odd Fellows Will Close Charter

At the meeting to be held tonight at 201-A West Broadway by the Glendale Lodge I. O. O. F. No. 388, the charter for the Junior order of Odd Fellows will be closed. This will be the last chance given to Odd Fellows to become charter members of the organization. Noble Grand Holbeck will be in charge of the meeting, and urges all members and visiting members to attend.

Mrs. Lillian Dow Is Given Happy Surprise

Tuesday afternoon club board members planned a happy surprise last night for Mrs. Lillian Dow, club director, who left at 8:15 o'clock from the Southern Pacific depot for an extended trip east.

Mrs. Dow was accompanied to the train by her son-in-law and daughter, Mr. and Mrs. Robert Philp, Mr. and Mrs. C. F. Parker, Miss Annie Philp and Miss Alice Pooley. While she was visiting with this group Mrs. Daniel Campbell, junior past president of the Tuesday Afternoon club, and members of the present board arrived to bid Mrs. Dow farewell. It was a most happy surprise and as Mrs. Dow boarded the train her club associates presented her with a gift. The board members are Mesdames A. H. Montgomery, John Robert White, Jr., Homer D. Lockwood, Chester O. Kling, A. R. Chappell, Harry C. Wilcox, S. C. Packer, Mabel Franklin Ocker, E. B. Sutton, H. E. Bartlett, B. O. Holbrook. It is Mrs. Dow's plan to go north to Seattle and Vancouver

Engineer Ordered to Halt Cesspool's Flow

The attention of the City Council was called by Arthur F. Priest to the fact that the cesspool in the alley between Brand boulevard and Maryland avenue is overflowing and the city engineer was ordered to take immediate action to correct the situation. Protests against the improvement of Bonnie Brae street, Elm avenue, Kenilworth avenue, Mariposa avenue and Broadway were denied. Resolutions ordering in the work on these streets were passed. Ordinances setting aside commercial districts on Central avenue and along the Union Pacific right of way were adopted.

Honduras, second largest republic of Central America, has only 66 miles of railroads. and the east through the Canadian Rockies. She will spend the month of August in Portland, Maine, and then go on to visit in New Hampshire and in her home city, Boston. She will return to Glendale late in October.

Two Reports Given at Advancement Meeting

R. M. Brown was chosen temporary president of the Glendale Advancement association to preside at the meeting held today noon at the Harriett Mae Tea room, in the absence of C. W. Ingledue, president. Mr. Brown also gave a report of the action of the Citizens' Bond committee, as he is the association's representative on this committee. J. F. McClish reported on the meeting of forest fire protective organization, and J. F. Chandler spoke on the needs of schools in the northwestern part of the city.

Official Welcome for Delegates to Synod

The City Council today authorized Mayor Spencer Robinson to issue a proclamation of welcome to the forthcoming Presbyterian Synod, when 1500 visitors from California, Arizona, Nevada, and such eastern states as New York, Pennsylvania and Illinois will be present in the city.

Large advertisement for used cars with text: 'Sale CLOSES Saturday Night 10 P.M. LAST DAY USED CARS LAST CHANCE' and 'Automobiles Have Sold Right and Left to Families From All Points'.

Ahlmann Drug Co. advertisement featuring 'A Glendale Drug Store For Glendale Folks', 'DOLLAR SPECIALS' for Narcisse Perfume, Cocoa Almond Soap, Shavers' Special, Beach Caps, and various everyday items like toothpaste and rubber goods.

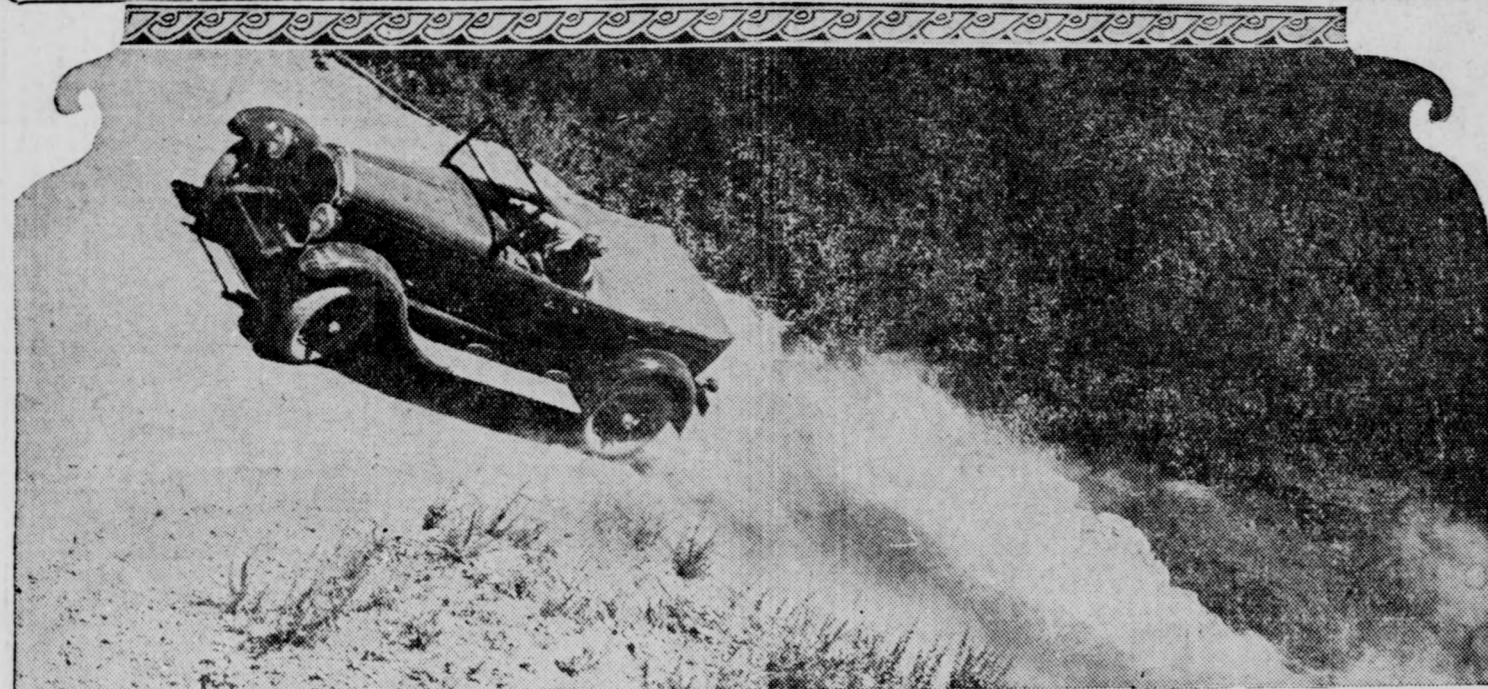
Reo Motor Car Co. advertisement for 'Exceptional Bargains in 35 Used Cars and Trucks' with a list of models and prices like Buick Coupe for \$1000, Maxwell for \$650, and Dodge for \$200, plus a 'Five Days' Trial' offer.

AUTOMOBILE SECTION

GLENDALE, LOS ANGELES COUNTY, CALIFORNIA, THURSDAY, JULY 24, 1924

Chrysler Clips Mt. Wilson Record

Some of the interesting moments in the whirlwind dash made by RALPH DE PALMA, the veteran race track driver, in sending a stock CHRYSLER SIX touring car up Mt. Wilson for a new record. The upper picture shows the car negotiating a hairpin turn at 35 miles an hour, and below is shown a portion of the steep type of road the car had to face in its race to the summit. DePalma is the smiling person in the oval picture.



Wrong Signals Are Blamed for Crashes

Although the majority of motor vehicle accidents are caused by failure to signal properly, drivers are becoming more careless than ever, according to reports made to the Automobile Club of Southern California. This costly negligence is becoming more marked in spite of repeated warning on the part of authorities and the fact that a motorist failing to signal properly on turning is culpable in case of accident.

One report made to the auto club extended over four years of checking cars turning at prominent corners in Southern California. During the year 1920 one in every twelve drivers failed to signal properly. These deficiencies have grown more common until at the present the check shows that one driver in five is guilty of this breach of law.

No particular class of drivers is named. Limousines are equally guilty with flivvers, and male and female display similar disregard for safety.

Old Casings May Be Cut Up for Patches

A blowout patch can be easily made by removing the outside rubber of an old casing. Cut off the head, cut off a portion eight or ten inches in length and taper the ends so it will not cut the inner tube.

MAKE OWN GEARS

All the gears used in the Franklin car are made in the Franklin factory.

Clothing made of old newspapers is being worn by the Chinese.

HISTORY OF CITY'S AUTO AGENTS SHOWS RECRUITS FROM MANY VARIED LINES

Veteran Of Business Recalls Days When Automobiles Ranked Something To Be Barred From Highways; Glendale Evening News Sketches Personnel Of Firms In Industry Here

Following the history of the various automobile agencies in Glendale, published in The Glendale Evening News automobile section on July 10, and the automobile dealers and car directory, published in the automobile section on July 17, The Evening News today presents a brief sketch of the men interested in selling automobiles in Glendale.

Some of the dealers here have been associated with the automobile industry for nearly a quarter century, becoming interested in the early days when folks considered automobiles as dangerous and tried to have them "lawed" off the highways. Other dealers started in the motorcycle business and gradually outgrew that until today they are successful agency owners.

Previous occupations of many are interesting. One man was a theatrical magnate in New York City before coming to California. Another sold lumber, another manufactured contractors' equipment, another was in the logging business, and so on down the line.

Following are the agencies, listed by cars, and the sketches of the personnel of each firm:

Buick

From the lumber business to the automobile industry is the jump of William A. Tanner, general manager of the firm of Tanner & Hall, Ltd., of 622 South Brand boulevard, Buick distributors for Glendale. Mr. Tanner came to Glendale in 1914 from Lexington, Neb. Before the firm of Tanner & Hall was organized, March 1, 1919, Mr. Tanner was associated with the Fox-Woodsum Lumber company, and was with that firm eleven years, in Nebraska and California. Harry E. Hall has lived in Glendale fifteen years. He established the first Oakland agency in this city and was the first Ford dealer in Glendale. Ray L. Galvin, sales manager for the company, has been a resident of Glendale for twelve years. He formerly lived in New York, where he was associated with the theatrical business. He has been connected with the automobile industry six years.

Studebaker

For the past thirteen years Stephen C. Packer, president of the Packer Auto company, 241 South Brand boulevard, has been a resident of Glendale. The Packer auto company is the local distributor for Studebaker cars, and Mr. Packer has held the agency since February, 1917. He was formerly in the logging business in the state of Washington, and before that was a lumber dealer in Michigan. His son, Donald H. Packer, who is general manager of the concern, has been associated with the Studebaker agency here for three years. Prior to the war he was on the road for the Celite Products company of North Santa Barbara, serving in this capacity for about eighteen months. During the World War, he served for two years.

Dodge

For fourteen years R. E. Corrigan, the authorized Dodge dealer in Glendale, has been associated with the automobile industry in various capacities. He has been a resident of Glendale for two years, opening the agency at 116 West Colorado street, in 1922. He was factory representative for the Dodge Brothers Motor company in California, Arizona, and Nevada for five years, a position gained through his intimate knowledge of Dodge cars. It was while traveling over his territory that he chose Glendale as the location for an agency on account of the possibilities of the future here as he saw it. George A. Clayton, sales manager for Mr. Corrigan, has lived in Glendale about 10 years. He was associated with George E. Clayton when Mr. Clayton had the Dodge agency here, and for four years was with Barker Brothers, in Los Angeles. He came to Southern California from Kentucky.

Chevrolet

C. L. Smith, proprietor of the Chevrolet agency at Orange, and Colorado streets, has been associated with the automobile and kindred industries for the past nineteen years. Years ago he started in the motorcycle business on the wholesale scale and had six men on the road. Later he engaged in wholesale and retail business of automobile accessories as well as motorcycles. He has been in Glendale for the past five years. Mr. Smith is

Cadillac

From the Sunny South comes William H. Court, owner of the Court Motor company, located at 901 South Brand boulevard. The Court Motor company is local distributor for the Cadillac cars, and the agency was formed by Mr. Court shortly after he came to Glendale, the doors being opened and the first Cadillac car displayed in February, 1921. Before coming to Glendale Mr. Court lived in Memphis, Tenn., and devoted his time to the supervision of large cotton plantations, and incidentally he is regarded throughout the south as an expert on cotton growing and grading. The first location of the agency was at 228 South Brand boulevard, later it was moved to 235 South Brand boulevard, and the first of this month the agency was moved to the new building at 901 South Brand.

Maxwell, Chrysler

Thirteen years of his business life have been spent in selling Maxwell cars or connected with the Maxwell company in Southern California, declared Lyman C. Clark, general manager of the Glendale Motor Car company, 124 West Colorado street, local distributors for the Maxwell and Chrysler cars. Before opening the agency here on February 1, 1923, Mr. Clark was wholesale manager for the Southern California distributors of Maxwell

cars. He selected Glendale after surveying every city in his territory. He is president of the Glendale Motor Car Dealers association, past president of the Glendale Motor Car Dealers' association, past president of the Kiwanis club, director of the Chamber of Commerce and a director of the Glendale Merchants' association.

Hudson, Essex

P. A. Kelley, proprietor of the Kelley Motor company, of 816 South Brand boulevard, local distributor for Hudson and Essex cars, came to Glendale in May, 1923, when he took over the agency. He has been a resident of Southern California for the past five years and has been associated with various angles of the automobile industry in that time. G. G. Merrick, sales manager for the firm, has lived in Glendale four years, coming here from Canada. He has been connected with the Kelley Motor company about a year. Recently the Kelley Motor company moved into the new building at 816 South Brand boulevard, built especially for the concern.

Moon

When Oscar Penn opened the Moon agency at 510 East Broadway in February, 1924, it was to satisfy a longing to become ac-

(Turn to page 8, col. 1)

Machine Winds Up Busy Day by Turning Mile Sprint at Culver City Track at Rate of Seventy-two Miles Per Hour

Whirling up Mt. Wilson toll road in the gray dawn of the morning, Ralph DePalma, at the wheel of a stock Chrysler six, on Wednesday, July 16, cut two minutes, 2.81 seconds from the former record which had stood undisturbed for more than two years.

The Chrysler's mark was 25 minutes, 48.85 seconds, an almost unbelievable mark to anyone who is familiar with the famous mountain road, with its climb of more than 4600 feet in nine and one-half miles. It was particularly remarkable in view of the fact that the car was not stripped, but carried all fenders, and was minus only the top glass in the windshield and the top. Even the muffler was not removed, nor was a cut out used, and DePalma's only complaint at the finish was over the fact that he had more power at his disposal than the rough condition of the road permitted him to use. With the exception of three short stretches where he dropped to low, he used second gear all the way up the hill, and at one point on the way up reached a speed of 44 miles an hour.

Record Is Official

The Chrysler's record run was checked off by four Los Angeles newspapermen, and was timed and handled in exactly the same fashion as have the previous record runs in the past. DePalma was started from the toll-house by one of the newspapermen, while the other three at the hotel at the summit listened to the starting word over the telephone as the signal to click three synchronized stop watches. The time as shown by the three watches varied less than a second, and the average of the three was taken as the time.

DePalma made a before-sunrise climb, to avoid the blinding glare of the early sun which would have imposed a greatly added hazard on some of the turns. The Mt. Wilson road, due to the dry winter, is in by no means as good condition as when former runs were made, in the opinion of Manager Cory of the Mt. Wilson hotel, and DePalma declared that the condition of the road was a handicap to him over certain stretches.

Plenty of Corners

"There are 144 curves on the road between the starting point and the finish line," explains Lyman P. Clark, of the Glendale Motor Car company, 124 West Colorado street, Maxwell and Chrysler dealers, "and the average driver feels lucky if he can make the nine and one-half mile climb in an hour. But, in spite of the terrific strain on the machine, when DePalma checked it at the summit the heat indicator registered less than 200 degrees, the water in the radiator had not boiled, and the radiator was as full as when the car started."

"The car was equipped with full balloon tires, and DePalma declared after the run that they were of immense help to him in giving maximum traction on the curves and the rough spots on the road."

After the Mt. Wilson climb DePalma took the Chrysler to the Culver City track, where he circled the mile track in 59 seconds and attained a speed of 72 miles on the straightaway.

USED CAR FIGURES

There were 3,091,440 used cars sold throughout the United States last year. The average selling price of these cars was \$308.63. For every 100 new cars sold, 73 used cars were turned in as part payment.

WE REPAIR

All Makes of STARTERS, GENERATORS and MAGNETOS

For All Makes of Automobiles and Tractors

And—We Are

Official Headlight Adjusting Station No. 14

Under Supervision of State Motor Vehicle Department

E. W. CIZEK Auto-Electric Co.

300 S. Brand Boulevard, Cor. Colorado St. Phone Glendale 5

"Thru Service We Grow"

25,000 More BUICKS

In Daily Service Here In California

Than Any Other Make of Car Costing Over \$600.

Efficiency, service, and durability, not to consider price, must have had something to do with achieving this remarkable record.

You have seen the new

Standard 6 Buick

Now take advantage of our invitation—and ride in it.

Tanner & Hall, Ltd.

Brand at Maple

Phone Glendale 50

Glendale

EXPERT SERVICE ON ALL MAKES OF AUTOS

—We Are Now Devoting Our Entire Attention to Automobile Repairing. When Your Car Needs Attention Let Us Give You an Estimate on the Work to be Done.

Attractive Prices on Valve Grinding and Brake Lining.

Hupmobile Specialists

Bartlett & French

111 West Harvard Street, Glendale
"The Home of the Hup"

CAMP-ODOLOGY

Prepared in the interest of the Auto Camper
by the Western Auto Supply Co.

The value of a folding table for camping is every year becoming more and more pronounced, and travelers everywhere are to be seen with this sort of equipment.

A table is necessary at all times on any kind of a camping trip, and to make one that is light in weight, yet compact and sturdy enough to meet the outer's needs, is the aim of every camp table manufacturer.

The Western Auto Supply company are featuring three distinct types of tables for campers: the lightweight folding, the all-steel, and the California box table. The lightweight wood table and the all-steel type, when folded, can be slipped away anywhere in the car as they take up but very little room.

Most Elaborate

The California box table is, perhaps, the most elaborate table on the market, as it consists of a combined table and running board box. Folded, this table forms a box in which to carry the food and dishes. When the table is assembled, the sides of the food box are raised to form the table leaves and the box is left with screened panels to keep out flies and insects. The center panel of the table is elevated to allow extra room for dishes and food.

Many campers make the table their chief article, for they take it off the car first, set it up and pile the cooking equipment on it while unpacking the rest of the outfit. In packing the process is reversed, and the table is the last to be put aboard.

Keep Distance Towing

A distance of ten feet should span the towing car and the car being towed. Attach the rope or cable to the front frame of the towed car and to the back frame of the car that is to do the work. The lines should be on the same side of both cars, and great care should be exercised when releasing the clutch when the tow car starts. It is advisable for every camper-out to include a strong tow rope or cable in his equipment.

Carry Enough Tools

On the camping trip it is better to take too many tools than too few. They are so easily misplaced or lost and it is of vital importance to see to it that the tool kit is replenished before starting on the summer tour. Limited space in the tool box prohibits the carrying of unnecessary tools, so it is important that the motorist should carry the needed tools in as compact a form as possible.

A good socket set answers the need of a complete set of wrenches in compact form. In a neat,

cloth-covered case, size eight inches long by two inches wide and one inch deep may be found enough wrenches to make any adjustment that is needed.

It consists of a ratchet handle that works either way, six sockets that are cut from a solid steel bar, two screw driver bits and an extension handle. With all of the different combinations that may be obtained with this set, it gives the utility of a whole wheelbarrow full of single purpose tools.

As compactness is the main thing to be considered when making up the camping list, these sets are invaluable.

For Seat Cushions

If the cushions in your car are badly worn or are torn and shabby you should recover them with cushion and seat covers before starting on the summer trip.

Many car owners choose to cover their cushions before the trip, regardless of the fact that their cushions are in excellent condition, as the coverings may be removed when the tour is over, and it saves the rough wear that they would receive during the camping season.

Extra tires should also be covered by tire covers before the season of camping starts. The spare tire will depreciate nearly as rapidly if left exposed to the elements as if it were in actual use in the car.

FIGURES REVEAL AUTOS' STANDINGS

Buick Leads in California in Registrations in Its Own Class

Members of the extensive Buick dealers' organization in California have had unusual cause for jubilation. With representative models of the new line of Buicks now scattered from one end of the state to the other, causing the most enthusiastic reception ever accorded this popular car, they feel justified in looking forward to a year of unprecedented prosperity.

Now come the figures showing the totals of the various popular passenger cars registered in California. These statistics, compiled by the State Division of Motor Vehicles at Sacramento, show that for automobiles listing at the respective factories in excess of \$650, the Buick leads the field with 91,667. Ford and Chevrolet are the only cars ahead of the Buick and they sell for less than half the price of the Buick. Buick's two nearest rivals have total registrations of 77,237 and 66,632 respectively.

"Leadership in this instance comes by virtue of Buick's consistency in building an outstanding line of automobiles year after year," said W. A. Tanner of Tanner & Hall, 622 South Brand boulevard, Buick dealers. "It would take a person with a long memory, indeed, to recall when the fundamental engineering principles of the original Buick six were changed. There has been consistent refining and improving, but the basic ideas back of the Buick six remain the same."

7,000,000 BOLTS ARE MADE DAILY

Ford Plants Use 300 Miles Of Steel Wire to Make 24-Hour Supply

The speed that must be maintained to supply the Ford plants with all the bolts that are needed in turning out the cars that flow from the various factories is shown by figures supplied by E. J. Flaherty, stock keeper of the Jesse E. Smith company, Ford dealers, at 115 West Colorado street, who says that 500 bolts a minute is the output of the machines at the Highland Park plant alone.

The plant uses 300 miles of high carbon steel wire daily to make the 7,000,000 bolts that are called for, and it is claimed that these bolts are from 50 to 75 per cent stronger than the average bolts that are on the market. The threads are rolled in under high pressure, instead of being cut in, and this, it is said, makes them stronger and more accurate.

Half a day's supply of wire is all that is carried on hand at the plant, and a careful check on the stock and the output is maintained all the time, in order that no delay may be permitted in turning out the quantity the schedule calls for.

As an instance of the strength of the Ford output it is said that the half-inch main bearing bolt will stand a direct pull equal to the weight of ten Ford cars.

With the possibility of the new German cure for sleeping sickness and tsetse sickness being effective it is believed that the white man will be able to invade parts of Africa now barred by the prevalence of these diseases.

TUNE IN ON THIS

VALUE vs. PRICE

Don't try to buy a thing too cheap
From those with things to sell—
Because the goods you'll have to keep,
And time will always tell.
The price you paid you'll soon forget,
The goods you get will stay;
The price you will not long regret—
The quality you may.

They ought to cut this "price" word out
Of dictionaries red,
Make VALUE what men talk about,
Not just the price instead.
In food or metal, cloth or woods,
Remember this advice;
Don't let the price control the goods,
But the goods control the price.

McClary's Wireless

"In the Studebaker News."

"Studebaker is now the world's largest builder of quality automobiles."

Packer Auto Co.

Phone Glendale 234

Brand at Colorado

NEWS CLASSIFIED ADS FOR BEST RESULTS

The Touring Car
\$295

Runabout - - \$265
Demountable Rims
and Starter \$85 extra

Coupe - - - \$525

Tudor Sedan - - 590

Fordor Sedan - 685

All prices f. o. b. Detroit

You can buy any model by making a small down-payment and arranging easy terms for the balance. Or you can buy on the Ford Weekly Purchase Plan. The Ford dealer in your neighborhood will gladly explain both plans in detail.

21 Years of Service

In the 21 years since its founding, on June 16th, 1903, the Ford Motor Company has contributed largely to the motorizing of modern life. Ten million Ford cars have quickened the pace of business, have brought convenience to day-by-day travel and healthful enjoyment to the American family. Economical manufacture on a large scale makes personal transportation available to all.

Ford Motor Company
Detroit, Michigan



SEE THE NEAREST AUTHORIZED FORD DEALER

Ford

THE UNIVERSAL CAR

Now with

BALLOON TIRES

The World's Largest Selling
6-Cylinder Closed Car

The **COACH**

HUDSON Super-Six

\$1500

ESSEX Six

\$1000

Freight and tax extra

The issue with motor car buyers this year is "Closed Car Comforts at Open Car Cost." The coach exclusively provides such advantages. That is why it is the largest selling 6-cylinder closed car in the world.

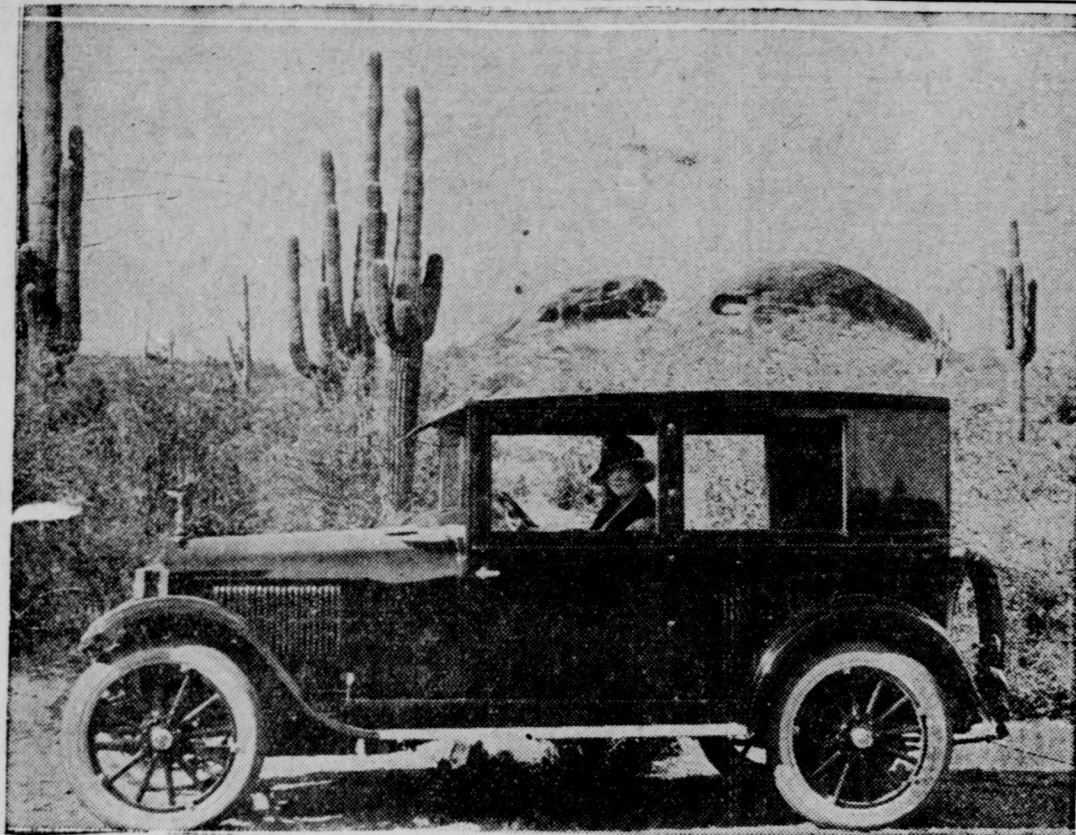
Why Buy An Open Car? KELLEY MOTOR CAR CO.

816 S. Brand Blvd., Glendale

Phone Glendale 837

Essex Appeals To Women

The ease of handling, the riding comfort, and the assurance of safety, are factors that tend to make the Essex Six one of the most popular cars for women drivers, who have learned the joys of driving their own cars under all conditions.



A SUPER VALUE HOBBS STORAGE BATTERY

FOR ALL MAKES OF CARS

More Battery Value For Less Money
Battery to Fit 85% of Cars
\$1700

L. H. Blackburn

AT

K. B. K. SERVICE STATION

1023

East Broadway



"In these days of good roads, it is not surprising to see an ever increasing number of women who 'drive their own,'" said P. A. Kelley of Kelley Motor company, 816 South Brand boulevard, local Hudson and Essex dealer. "After trying the joys of piloting their cars for themselves, going wherever and whenever they please, the next logical step was to demand a car that could be easily handled on long trips without fatigue.

"It took several years of experimenting for factories to perfect the motor car to the point now reached by Essex—a mechanically dependable car, combining power with economy, speed, with quick acting brakes, and a new spring suspension with easy riding qualities that amaze the uninitiated.

"In consequence of this the Essex Six is rapidly increasing the number of women drivers on the deserts of the southwest. It is no longer necessary for them to remain in the city or travel on the paved highway. Long trips across country may safely be undertaken by them, without fear of mechanical difficulties or physical exhaustion.

"Even in Arizona, part of which has notoriously poor roads, the woman driver finds enjoyment in the Essex. According to a letter received by Mr. Kelley Essex sales to women have doubled since the Six came on the market in January.

USE HICKORY IN WHEELS OF CARS

Studebaker's Carriage Stock Incorporated In Late Models of Autos

Incorporated in the new Studebaker light sixes and special sixes are wheels that are made of hickory that has been stored in the warehouses of the corporation from away back in the times when Studebaker carriages and wagons were known throughout the country for their high standards. Now that Studebaker is turning out automobiles on a quantity basis a use has been found for the hickory that has been gradually becoming seasoned until it has reached the pitch of perfection.

Nor is the quality of the wood the only merit, according to Don H. Packer of the Packer Auto company, 245 South Brand boulevard, Studebaker distributors. "The work on these wheels is done by artists in the woodworking line, men who have been with Studebaker for years and who know hickory and how to work it into wheels as no other men in the country do today. "Each piece is seasoned until every possibility of shrinkage is eliminated, and there is no danger of wheels rattling or squeaking, no matter how long they may be used."

SPECIALIZING ON REPAIR OF CARS

Bartlett & French Introduce Service Features In Work for Patrons

The firm of Bartlett & French, which has so long conducted "The Home of the Hup" in Glendale, at 111 W. Harvard street, is now specializing in expert automobile repairing on all makes of cars.

In conjunction with the Hupmobile agency, the Bartlett & French mechanical force is equipped to take care of any make of car and to turn out quality work at a reasonable price.

Realizing how inconvenient it often is for automobile owners personally to leave their cars at a shop and to call for them again, this firm will send for a car when

The General Sherman tree is the biggest in the world. See how its height compares with the terrific climb the Chrysler Six made.



requested and return it after the work is completed, anywhere in Glendale and vicinity, without extra charge except where a "tow job" is necessary. This is a modern service which this shop believes Glendale is entitled to. Estimates are given on jobs before the work is undertaken, and it is hoped by the Bartlett & French staff that owners will never hesitate to drive in and talk things over, whether they are ready or not to have work done.

Incorporation Papers Of University Filed

SACRAMENTO, July 24.—Articles of incorporation of the Western University of Los Angeles today were filed with Secretary of State Frank C. Jordan. Among the directors is William Crevey, 1426 W. Wilson place, Los Angeles.

The income of Sir Edmund Wesley, of England, is estimated at \$750,000 a year.

CHRYSLER SIX

"Master of Mountains"



SETS NEW MT. WILSON RECORD

A Chrysler Six, strictly stock, driven by Ralph De Palma, sets new Mt. Wilson record, and wins Express trophy cup, Wednesday, July 16. Time, checked by four newspaper observers, 25 minutes, 48.85 seconds, beating former record of 27 minutes, 51.66 seconds by 2 minutes, 2.81 seconds. This also beats the non-stock record of 26 minutes, 56 seconds.

Distance, 9.5 miles. Elevation at start, 1250 feet, at finish, 5866 feet. Total climb, 4636 feet. Approximate average grade, 10 per cent. Maximum grade, 16 per cent. One hundred and forty-four curves in 9 1/2 miles. Road condition bad, due to dry season and heavy travel.

AN amazing speed record up a steep and dangerous road, yet if you had seen Ralph De Palma break the Mt. Wilson record, you'd have felt you could have done it yourself.

That was the biggest thing about the Chrysler record climb—it looked so easy.

Two things made it look that way. One was the tremendous surge of power that literally swept the Chrysler up those heart breaking grades. The other was the gripping hold of the four wheel hydraulic brakes when the Chrysler took the curves.

No swaying, sliding or skidding on the turns, just in and out and gone like a flash. The tires seemed to cling to the road like a flanged wheel to a steel rail.

De Palma will tell you it wasn't hard to crack the Mt. Wilson record—with a Chrysler.

Seventy horsepower in a compact—low swung—easily handled car. Brakes to match such power, and curb it to safety. Cooling to stand the test of nine miles of full-throttle pulling.

Chrysler Six, Master of Mountains. A car for California—and Californians.

Try it yourself, and see.

Glendale Motor Car Co.

MAXWELL AND CHRYSLER DEALERS

Phone Glendale 2430.

124 West Colorado

Special Values — in — USED CARS

- 1 Ford Roadster, 1923.....\$275.00
- 1 Ford Sedan, 1922.....\$300.00
- 1 1924 Franklin Touring.....\$1900.00
- 1 1924 Franklin Touring.....\$1775.00
- 1 1923 Franklin Sedan.....\$1800.00
- 1 1920 Franklin Touring.....\$900.00
- 1 1919 Franklin Roadster.....\$575.00
- 1 1917 Franklin Chummy Roadster.....\$575.00
- 1 1916 Franklin Touring.....\$300.00
- 1 1913 Franklin Touring.....\$175.00
- 1 1922 Essex Touring.....\$575.00
- 1 1919 Dodge Sedan.....\$350.00

All Franklin cars are in first class condition and several of them have a lot of extra equipment. Several are newly painted. We stand behind our used cars. Terms and trade.

Motor Sales Co.

406 E. Colorado
Phone 790-M or 4027.

Wrong Adjustment of Headlights Dangerous

Much interest of late has been shown in the headlight law, according to Miller & King, who operate the Westinghouse battery station at the corner of Colorado street and Glendale avenue.

Statistics show an appalling loss of life, limb and property directly caused by improperly adjusted headlights which, in many cases, are the results of carelessness on the part of motorists through the little care that is given the headlight equipment, it is said.

The Westinghouse battery station is the official headlight adjusting station for Glendale and at a very small cost any lights may be adjusted so that the fullest requirements of the law will be fulfilled.

Plan Prosecution On Forest Fire Charges

LOS ANGELES, July 24.—Steps were taken by Los Angeles authorities for rigorous prosecution of twenty-five persons under arrest here on charges of violation of forest fire prevention regulations. The move to punish offenders against the laws protecting the county's forest areas from fire menace was in line with a general campaign to reduce the fire hazard during the remainder of the summer.

Burning of a twenty foot protective strip along public highways to prevent fires originating from carelessly thrown cigarettes and cigars of motorists and detailing of guards along highways to warn travelers of fire dangers were measures planned for protection against new outbreaks in the forests.

In the interior of Australia the fare for a trip of 404 miles by stage and camel is \$50.

SATISFACTION GUARANTEED or your money back

New and Used Parts for Nearly Every Make of Car

Don't Run Without a Crank We Have Cranks For All Cars

Glendale Auto Wrecking and Supply Co.
1010 East Broadway Phone Glendale 2852-W

OFFICIAL HEAD LIGHT STATION

We Adjust Your Headlights at a Nominal Cost

WESTINGHOUSE BATTERY STATION
Miller & King
306 S. Glendale Ave., Cor. Colorado. Glen. 741-J

AUTO MEN FROM VARIOUS STATES

Glendale Is Fortunate In Having Fine Class of Representatives

(Continued from page 5)

ively engaged in the automobile business. Prior to that time Mr. Penn had devoted his time to looking after his income property. The firm name at that time was Penn-Rawls Motor company, W. E. Rawls being the other member of the firm. Early this month Mr. Penn took over the interests of Mr. Rawls and the firm name was changed to the Penn Motor company. He has been a resident of Glendale since opening the Moon agency, living for a long time at Long Beach, and prior to his residence in the beach city, he lived at Riverside.

Chandler, Cleveland
For the past seven years Bine J. Smith, one of the members of the firm of Smith Brothers, local distributors for the Chandler and Cleveland cars, has been located in Glendale. Before taking over the Chandler and Cleveland agency, Bine Smith was connected with the Broadway Auto Sales Service company in Los Angeles. Alfred D. Smith, his brother and the other member of the firm, came to Glendale two years ago from the Imperial Valley where he owned a ranch. When he became associated with his brother, it was his first venture in the automobile industry. The present location of the agency is at 1119 South Brand boulevard.

Gardner
Ten of the twenty years W. E. Healy, president and general manager of the Jellison Motor company, 1004 South Brand boulevard, local distributors for the Gardner car, has spent in Southern California, he has been connected with the automobile industry. He came to Glendale about a year ago from Los Angeles. The Gardner agency was established by E. V. Jellison in April, 1921, at the present address and a year ago Mr. Healy became a partner in the firm.

Roamer, Barley, Columbia
The Roamer, Barley, Columbia agency, recently opened at 1000 South Brand boulevard, is one of the newest agencies in Glendale. It was established by C. H. Watson and Alfred H. Barnes. Mr. Watson is president of the company, and has lived in Glendale for the past eighteen months, coming here from Chicago. He has been connected with the automobile industry for seventeen years, most of that time being spent in Chicago in various capacities. He was formerly asso-

ciated with the Barley Super-service station. Mr. Barnes has lived in Glendale for four years. Before forming the agency with Mr. Watson, Mr. Barnes was a contractor.

Paige, Jewett
Ralph B. Bliss, proprietor and general manager of the Paige and Jewett agency at 219 West Colorado street, began in the automobile industry back in 1911. For five years he devoted his time to the selling of motorcycles. Later he was sales manager for a Los Angeles automobile concern. He secured the agency in Glendale in May, 1923. His home is in Los Angeles, where he lived for the past thirty-five years.

Oldsmobile
One of the first Oldsmobile agencies opened in the United States was started in Albia, Iowa, by C. H. Hunter, proprietor and general manager of the Oldsmobile agency in Glendale now, at 208 West Broadway. This was back in 1903 and Mr. Hunter has been associated with the automobile industry since that time. He has lived in Southern California for thirteen years. For five years he was wholesale manager for Southern California for the Oldsmobile, and prior to that time he was connected with the wholesale departments of other companies. He has lived in Glendale two years, coming here from Los Angeles.

Jordan, Hupmobile
The Glendale distributors for the Hupmobile and Jordan cars, who opened offices at 111 West Harvard street less than two weeks ago, is in charge of H. V. White. The agency was opened by H. W. Swanson, who has charge of the Hollywood branch. Mr. White has been connected with the automobile industry for five years. He was with Mr. Swanson in the Hollywood office about one year before coming to Glendale when the local branch was opened, and prior to the time lived in Santa Barbara. His former home was Fort Wayne, Ind. Mr. Swanson has devoted ten years to the automobile business. He has owned the Hollywood branch two years, was three years in Kansas City, where he held the Studebaker agency, and five years in Detroit, where he sold Hupmobiles. Mr. Swanson lives in Hollywood.

Ford, Lincoln
For the past ten years J. G. Caddell, proprietor of the automobile firm which bears his name, and is located at South Brand boulevard and San Fernando road, has been engaged in the automobile business. His first agency was in Covina. Later he moved to Glendora and in 1921 moved to Eagle Rock, having Ford agencies at these points. On January 1, 1924 he located in Glendale, and now sells Fords, Lincolns and Fordson tractors. It is worthy of note that the four agencies he has owned in as many cities have all been located in Los Angeles county.

Oakland
Backed with years of experience in the selling of automobiles, principally Oakland cars, John Neuschaeffer, present owner of the Oakland agency at 406 East Colorado street, came to Glendale in September, 1923 and became associated with Thomas Ricketts in the Oakland agency here. Before moving to Glendale, Mr. Neuschaeffer was connected with the Oakland Sales company of Providence, R. I. He motored from Providence to Glendale. He acquired the agency in May, 1924. J. A. Ricketts, general manager at the local agency, was formerly associated with his brother, and has devoted considerable time to insurance of all kinds, but specializes in automobile insurance.

Ford, Lincoln
When Jesse E. Smith took over the Ford agency in Glendale, now located at 115 West Colorado street, in 1915 it was only a short time after he had left Detroit, where he had been connected with the Ford factories in various capacities. His first work in the automobile industry in California was in the retail sales department of the Los Angeles branch, and when Harry E. Hall withdrew from the agency in Glendale, Mr. Smith made application for it and was appointed an authorized dealer here. F. K. Lowe, sales manager for the agency, has been with Mr. Smith for eight years. He moved to Glendale in 1901 from Pasadena, where he formerly conducted a grocery business.

Nash, Lafayette
After a number of years in Milwaukee as a manufacturer of contractors' equipment, Adolph Nydegger, president of the Nash Sales company, Inc., of 1234 South Brand boulevard, came to Glendale in July, 1923 and in September of the same year took over the Nash agency, then owned by the Glendale Nash company, then located at 112 South Maryland avenue. Donald C. Barbee, treasurer of the company, also lived in Milwaukee before coming to Glendale a year ago. The present firm handles Nash and Lafayette automobiles.

Packard
After looking over the Southwest for a year, as well as visiting many other parts of the country, W. H. Daniel, president and general manager of the Dixie Motor company, 1129 South Brand boulevard, finally decided to locate in Glendale. Mr. Daniel came to this city a little over a year ago, opening the agency on May 2, 1923. It was not his first visit to Glendale, however, as he was here in August, 1922 to look over the situation. Mr.

Daniel formerly owned a Packard agency in Mississippi, and is a son of the South.

Gray
Although W. H. Gresham, president and general manager of the Valley Auto company, of 1129 South Brand boulevard, local distributors for Gray cars, has lived in Southern California for twelve years, he has only lived in Glendale a small portion of that time. The Gray agency was opened on December 1, 1922. Prior to coming to Glendale Mr. Gresham was in the tire selling business, being associated for a time with the Firestone company and later with the Ajax concern.

Reo
Selling automobiles for the last ten years has been the business life of R. C. Hennessy, general

manager of the Reo Motor Car Company of California, Inc., local distributors for Reo cars. Mr. Hennessy began his career as an automobile salesman with the Earl B. Armstrong company in Los Angeles, handling Chandler cars. On December 1, 1923, he was placed in charge of the local agency, which was secured by the Reo Motor Car Company of California, from Harry E. White, who established the agency in September, 1922. Mr. Hennessy has followed the trend of automobiles during the last 10 years and has watched the steady climb of efficiency in manufacture and products turned out by the factory, and has built up an organization based on courtesy, service and efficiency.

Star, Durant
Selling automobiles and fixing automobiles has been the business life for the past twenty-two years

of J. F. Armstrong, general manager of Armstrong & Bradshaw, of 115 West Harvard street, local distributors for Star and Durant cars. Mr. Armstrong has been in Glendale about eighteen months, coming here from Bakersfield, where he held the Nash agency. He was located in Los Angeles for ten years, six of which he had his own service station, and did work for the Studebaker distributors. G. O. Bradshaw, shop manager and part owner of the agency, has been in Glendale about one year, coming here from Muskogee, Okla. He has been connected with the automobile industry three years, and prior to that time was a machinist in Oelwein, Iowa.

Overland, Willys-Knight
After spending 11 years in the

automobile selling game in Brooklyn, Iowa, and one year in the insurance business in Hollywood, B. W. Sloan, president and general manager of the B. W. Sloan, Inc., local distributor of Overland and Willys-Knight cars, moved to Glendale. Mr. Sloan became associated with George T. Smith in the Overland agency June 1, 1923, and on May 1 of this year, Mr. Sloan became sole owner of the company and moved to the new building at 905 South Brand boulevard, only two weeks ago. Mr. Sloan has devoted practically all of the years of his business life to the automobile and insurance selling business.

Spanish women have not entirely adopted the French shoe styles, especially as to last, the short vamp and very high curved heel, but prefer the straight heel of the Cuban type.

Assess \$500 Fine for Liquor Law Violation

Salvatore Marretto of Los Angeles, pleaded guilty on Wednesday before Judge Frank H. Lowe of the Glendale police court on a charge of possessing and transporting intoxicating liquor. He was fined \$500, on payment of which he was released. The arrest took place July 8, at Los Feliz and San Fernando roads. In the car driven by Marretto were found twenty gallons of "moonshine" whiskey, in five-gallon tin cans, officers reported. B. A. Rogers of Pasadena was fined \$50 this morning by Judge Lowe, after he had pleaded guilty of having in his possession two quart bottles of gin when arrested yesterday. He was released on payment of the fine.

Prison Director to Inspect Labor Camp

SACRAMENTO, July 24. — Dr. Ramon Victorio, director of Bilibid prison, Manila, P. I., who is visiting California prisons, will inspect the Briceburg convict labor camp which consists of honor prisoners engaged in working on the Yosemite lateral of the state highway system this week. He will be accompanied by Ben H. Milliken, superintendent of the camps for the state highway commission, and Thomas L. Gannon, member of the board of state prison directors. Economies effected in the camp, it is claimed, have made it possible for the men to make net earnings not in excess of 75 cents per day, without increasing the cost of the work to the state.

In Glendale These dealers will serve you with RED CROWN GASOLINE

ANDERSON & TUPPER
Montrose

J. B. AKARD
Brand and Dryden

G. C. CATE
6048 Pasadena Ave., L. A.

F. H. EVARTS
Broadway and Central

W. J. GARDINER
Michigan and Ocean View
Montrose

HAMILTON & HOME
Tujunga

L. D. JARRETT
Avenue 63 and Pasadena Ave.

L. N. McMILLAN
Verdugo and Glassell

MONTROSE AUTO SUPPLY
Montrose

THOS. F. OWENS
Tujunga

PSENNER BROS.
601 S. Brand

HOMER RICE
Sunland

SMITH & SMITH
1119 S. Brand

C. JENNINGS YOUNG
Verdugo City



"Red Crown, Sir— from the Red, White and Blue Pump!"

Much of the strongest praise that "Red Crown" gets comes from the 6000 dealers who sell it and know what it will do. Their faith is backed by the performance which makes "Red Crown" the most popular "gas" in the West.

To save carburetor adjustments, and to improve your car's performance on the hills and the long steady pulls, for power and mileage and true economy, use "Red Crown." You'll always be glad if you do.

And remember—Take along one or two Standard Oil Scrip Books—two yards of this scrip will take you about 1800 miles. Obtainable in \$5, \$10 and \$20 denominations at all Standard Oil Service Stations. Convenient!—saves handling cash and is redeemable by dealers as well as at all Standard Oil Company Service Stations.



TIRE BARGAINS

CORDS NON-SKID
Best Quality Full Guarantee

- 30x3 1/2 Regular \$7.95
- 30x3 1/2 Straight Side \$9.50
- 32x3 1/2 Oversize \$11.95
- 31x4 Oversize \$11.75
- 32x4 Oversize \$13.75
- 33x4 Oversize \$13.95
- 34x4 Oversize \$14.75
- 33x4 1/2 Oversize \$19.50
- 34x4 1/2 Oversize \$19.50
- 33x5 Oversize \$25.00
- 35x5 Oversize \$25.00

Other Sizes in Proportion

AUTOMOBILE TIRE CO.
Of California, Inc.
143 S. Brand
Phone 1314

STANDARD OF QUALITY

STANDARD OIL COMPANY (California)

Ride on air without puncture-fear—

LEE puncture-proof PNEUMATIC CORD TIRES

For Commercial Vehicle and Passenger Car



Above we picture what you would see if you poked back the tread of a Puncture-Proof Cord. A triple sheathing of overlapping steel discs imbedded in rubber but never touching each other, protect both casing and inner tube.

For thousands of pleasure and commercial car owners Lee Puncture-Proof Pneumatic Cords have brought to motoring not only tire economy, but a new sense of pleasure and confidence.

Lee Puncture-Proof Cords, built double oversize, are unusually resilient tires. They carry a tread of proved anti-skid effectiveness. Above all, they are the only pneumatic tires in the world guaranteed on a cash refund basis against punctures.

Monarch Auto Supply Co. 204 South Brand Blvd. Phone Glendale 679

Representing the LEE TIRE & RUBBER CO., NEW YORK

ONE OF THE COMPLETE LINE OF LEE TIRES

DESIGNS IN TILE BEAUTIFY HOMES REO TRAINS MEN TO GIVE SERVICE

Variety of Material Permits Individual Treatment For Every Home

Throughout its phenomenal growth during the past few years nothing seems to have been overlooked in Glendale along the line of commercial art, and the announcement of the establishment of the Arcraft Tile and Mantel company, located at 111 1/2 South Orange street, is expected to elicit appreciation from those contemplating the construction of a home.

During the past few years the tile industry has expanded into what might be termed one of the great arts and today is regarded as being most essential to the beauty and durability of the home, no matter how simple or how palatial is its construction.

For many years tile has been universally used in the interior construction and decoration of large hotels, office buildings, municipal buildings, churches, schools, etc., but its popularity has more recently extended into the home not altogether from standpoint of durability, but for the sake of beauty and art.

Original Designs Any individual or original design may be executed perfectly by the Arcraft Tile and Mantel company, whether of Gothic, Grecian, Oriental, Mission or modern type, as they carry only the most advanced designs of tile and, with their special ability to treat this product, any desired effect may be easily produced no matter how exacting.

Messrs Macabee and White, who comprise this firm, are said to be loyal Glendale boosters.

Seventy-two thousand Panama hats were exported from Ecuador in one month recently.

Course of Instruction for Apprentices Given In Firm's Factory

Always a leader in training men as a means of maintaining high manufacturing standards, the Reo Motor Car company has recently augmented its work in this field by adding a new apprentice course arranged specifically for men from the service departments of its dealers' organizations, according to R. C. Hennessy, manager of the Glendale branch of the Reo Motor Car Co. of Southern California, 126 South Orange street.

"This step is inaugurated as Reo enters its twentieth year of uninterrupted success in gaining and holding public confidence in its vehicles," says Mr. Hennessy. "Back of the plan is the company's desire to improve by every possible means the service rendered the public by Reo and its dealers."

"The new course varies from that offered to factory men in the type of work taken up. Whereas the men who are being trained for work in the factory are schooled primarily in the actual manufacturing operations, the apprentices from dealers' service shops secure the most of their training in the various assembling departments. This type of work prepares them most excellently to give intelligent service when they return to their regular positions."

"The factory apprentices are schooled alternately in shop practice and class room theory, being given ample opportunity to work out class problems and theories with actual factory equipment under the supervision of six experienced instructors."

CLOSE VACATION SCHOOL SESSION

Program, Exhibit to Mark End of Summer Bible Course of Study

The Daily Vacation Church school of the First Methodist church, of which Rev. H. L. Rasmus, Jr., is the superintendent, will present a program and exhibit on Friday night, July 25, at 7:30 o'clock at the church located on the corner of Wilson and Kenwood streets. This program and exhibit is the closing event of the school for this year.

Mrs. McKay, who is in charge of the pageants to be presented Friday night, has worked hard in the preparation of the program. Mrs. McKay has been assisted by the teachers of the other departments, Mrs. Beulah Rasmus, of the beginners department, Mrs. H. W. Yarrick of the primary, and Miss Helen Woods of the junior department.

During the session of the Daily Vacation Church school, 100 children were enrolled with an average daily attendance of 75. Mr. Rasmus is very well pleased with the work accomplished by the pupils under the direction of their teachers.

Closing Program The following program will be presented in connection with an exhibit:

Song, "The Star Spangled Banner" followed by salute to the American flag.

Song, "Onward, Christian Soldiers" and salute to the Christian flag.

Prayer. Song by the children of the primary department. Memory work by the Junior children.

Beginners' song and verses. Pageant, "The Baby Moses," by the Primary children.

Pageant, "Joseph and His Brothers" by the Junior children. Closing song, "America."

DANCE AIDS FUND OF WOMEN'S CLUB

Lewis Sisters Are Special Attraction on Program At Silver Tea

TUJUNGA, July 24.—The dance given by the Tujungna Women's club last Monday night was well attended, the net proceeds amounting to \$34. These dances are held every Monday night, the kindness of Mr. Hartranft making the Garden of the Moon available. Old-fashioned dances are popular and almost everyone seems to know how to dance them.

The silver tea given at the clubhouse Tuesday afternoon was almost crowded. The special attraction was the program by the Lewis Sisters trio, formerly from Boston, now building a home in Tujungna. After the program refreshments were served and the affair was pronounced a success.

The Tujungna Women's club has received an invitation to attend the community basket picnic in the garden at the Old Mission next Saturday at 5 o'clock. A program has been prepared and a fine time is expected by all who can attend.

Fashions in women's clothes have almost wrecked the button trade of many countries.

A Big Kick in Every Gallon

BUY YOUR GAS HERE AND SAVE THE DIFFERENCE

No Better Gasoline on the Market!



Tax Included

CITY SPECIFICATIONS

Expert Washing and Greasing

K. B. K. SERVICE STATION

1023 East Broadway

A Richfield Station is right around the corner

.. You don't have to go far to get this powerful, easy-starting gasoline—there's always a Richfield station right around the corner. Richfield Gasoline is sold by the majority of independent service

stations because of an overwhelming public demand for its superior qualities. It actually does give you greater power—longer mileage—easier starting and acceleration!...

.. A test of only 50 or 100 miles is enough to convince you that Richfield's improved processes of grading and distillation have produced a gasoline that combines the qualities of

greater power, easier starting and acceleration and longer mileage... .. Drain your tank and refill with Richfield today at any of the following stations—wherever you see the famous blue and gold Richfield sign.

- List of Richfield Gasoline service stations: GLENDALE, OWENS' SERVICE STATION, HENDRICKS & DOZEA SERVICE STATION, BURBANK, BURBANK SERVICE STATION, D. N. HARTLEY SERVICE STATION, R. J. SERVICE STATION, MARYLAND GARAGE, AYERS AND DAIR SERVICE STATION, GLENDALE SERVICE STATION, FRED PLEGER SERVICE STATION, PACIFIC FILLING STATION, EVANS' GARAGE, OAKMONT SERVICE STATION, MISCELLANEOUS, SUMMIT GLEN SERVICE STATION, WALNUT DRIVE SERVICE STATION, THREE-WAY INN SERVICE STATION, LA CRESCENTA SERVICE STATION, C. J. YOUNG'S GARAGE, WEST BURBANK GARAGE, EAGLE ROCK, EAGLE ROCK PARK SERVICE STATION, PARAMOUNT SERVICE STATION, PRESTON SERVICE STATION, MOTOR INN SERVICE STATION.



RICHFIELD GASOLINE AND RICHLUBE MOTOR OIL— PERFECT LUBRICATION— GREATER POWER— QUICKER PICK-UP— LONGER MILEAGE

SCIENCE ASSISTS GROWTH OF HAIR

Barnett System of Treatment Overcomes Baldness, Is Inventor's Claim

For many years the Bald-Headed Row has been the target for many jests both kind and unkind, but from henceforth to be a member of this organization will be a matter of option rather than compulsion, as science has gone one step further into the scheme of things and unfolded to man's sense of comprehension a system of hair growing which all natu-

alists have proclaimed an impossibility.

The Barnett system of hair growing, which was founded by E. M. Barnett, and which is claimed to be an infallible hair restorer, is not a tonic but consists of a treatment of the scalp by way of construction of the fat cells and the removal of the cause of the baldness. This system of treatment co-ordinates with Nature and gives the stimulus that is necessary to rebuild lost cells which in due time enables her to replace the shiny bald head with a silky growth of hair, which is Nature's natural and normal duty toward man-kind.

Cause of Baldness The cause of baldness is said to be a scale that forms over the scalp which is in some cases the result of fever, too much wetting of the hair, or accumulations,

and this scale must be removed before the fat cells can be developed, thus letting Nature have her perfect domain.

This announcement of the Barnett system of Hair Growing, which is located at 221 West Broadway, will, it is believed, be received with deepest gratitude by all who have been deprived of a luxuriant growth of hair which is one of Nature's greatest beautifiers and especially those who have long since been relegated to the Bald Head Row.

Petroleum was known to exist in Northern Pennsylvania more than eighty years ago, but no effort was made to commercialize its output in quantities until 1854.

Cherry fairs are of ancient origin, but are still held in England.

Advertisement for Moon cars: "Steadily Rising in Popular Opinion" Did You Know That the MOON Has Been Manufactured Since 1907 And in addition to being one of the oldest established cars on the market is made by one of the financially strongest automobile manufacturers in the country. —If you buy a MOON—you will not own an orphan. NEW MODELS Now On Display in Glendale Ask any Moon owner as to performance THE GREATEST VALUE IN A MOTOR CAR YOU CAN SECURE FOR YOUR MONEY Standard Equipment —includes— 4-Wheel Hydraulic Brakes Disc Wheels and Balloon Tires Our Mechanics Are Specialists FREE We Will Equalize Your Brakes, Adjust Your Carburetor and Analyze Your Motor Trouble FREE We Can Repair Your MARMON or Your MOON Telephone Glen. 1077 for a Demonstration Open Evenings, and Sundays Until Noon The Penn Motor Co. Phone Glen. 1077 510 East Broadway, Glendale

SPORTS

McGovern Winner In Bout at San Fernando

SAN FERNANDO, July 24.—Young McGovern won the popular verdict over Henry Marcus in the main event of the San Fernando Athletic club here tonight, in the bout that gave the fans all they wished. Another rattling affair was the decision battling Ward won over Sailor Moser. In the special event Young Griff knocked out Kid Karpan in the second round. Other results were: Young Morley shaded Jimmy Brown, and Kid Reese stopped Joe Blandini.

Red Feathers Victors Against Central Team

The Red Feathers were victorious over the Central Cleaners last night at the Recreation alleys, when the ticklers won two of the three games played with the cleaners. Freigh, of the losers, rolled 239 in the last game for high score.

RED FEATHERS
 Players: 1 2 3
 Holmes 163 172 158
 Graus 174 214 152
 Read 168 152 156
 Moore 155 212 206
 Rieder 221 222 206
Totals 832 852 875

CENTRAL CLEANERS
 Players: 1 2 3
 Wnaley 184 163 150
 Freigh 196 167 233
 Pfallme 149 171 200
 McLane 174 222 208
Totals 667 843 942

FIGHT NEXT WEEK

Hayden Wadhams announced yesterday that Young Nationalista and Georgie Rivers would head next Tuesday's card at the Vernon arena. Rivers outpointed the Filipino in a great battle a few weeks ago, and the latter will be out to even the score.

The Cubs drove Jess Barnes off the mound in the second and won from the Braves 5 to 2.

TOM GIBBONS IS LONDON FAVORITE

Picked to Win In Bout With Bloomfield August 9 In British Ring

By DAVIS J. WALSH
 For International News Service.
 LONDON, July 24.—Tom Gibbons, the St. Paul wonder, is a red hot favorite to win his fight over Jack Bloomfield when they meet on August 9.

To show the trend of odds, Bernard Mortimer, former manager of Joe Beckett, the English fighter, who bet \$35,000 on Beckett to defeat Georges Carpentier, the French idol, when they met for the first time, is offering 5 to 1 that Tom will win.

Gibbons is in excellent condition. He is training at the London Country club, where he has luxurious quarters and uniformed lackeys at his command, in marked contrast to conditions prevailing in Montana a year ago when he trained for his fight with Jack Dempsey.



Don't Throw Up Your Hands With Disgust!
 No matter how badly damaged your car body is, no matter how badly dented your fenders are,
We Can Fix Them
 At a Nominal Low Cost.

Baked Enameling Our Specialty
 Radiator Shell Repairing

CARL & HENRY
 122 West Colorado Blvd. Glen. 1124-W
 Open 7 A. M. to 6 P. M.

Liked By Britons

Gibbons is rapidly displacing Carpentier as England's favorite among the foreign boxers. Crowds flock to see him go through his daily routine and he is rapidly endearing himself to the hearts of the English by his modest, unassuming ways, but nevertheless his business-like methods of training.

Interest in the fight already is at fever heat. Wilson, the promoter, estimates that the gate will be more than \$300,000. Gibbons will draw down \$50,000 as his share.

Plan Ceremonies for Launching Memorial

(Continued from page 3)

The G. A. R., Buron Pitts, chairman, and Mandie Silberberg of the American Legion; Judge John W. Shenk, R. Morgan Galbreth and John T. Curtin, secretary, representing the United States Spanish War Veterans.

To Foster Loyalty

It is believed that this building will, through bringing its members into closer contact, foster the spirit of loyalty and patriotism and promote good fellowship and good health. It should be recognized as belonging equally to the entire county and as such, bringing into association all the organizations. Great expectations are held for the many contests that will undoubtedly take place on the gymnasium floor. Contests of another nature may be held in the banquet hall in the basement.

As a whole, the building is complete in every detail and the enthusiasm of its members assures its success in the community.

John T. Curtin of the Spanish War Veterans expressed what seems to be the unanimous opinion of all who have been connected with the Patriotic Hall when he said that the work of the Allied Architects Association had been a great factor in bringing about such a successful realization of their hopes.

This association was incorporated in July, 1921. At that time a small number of men of broad vision and high principles enlisted in a group for the purpose of lending their efforts to the improvement of art and architecture. They were convinced that men could work together for a common cause and through service to the public create buildings which the community could be proud of. In their field of endeavor they hoped to inject a new idea of service and a new force in civil affairs. They were willing to submerge their individual interests in this allied work. It was this collective service, this combining of many talented architects in one well regulated organization, which prompted the board of supervisors to select the association to furnish the architectural service for this county building.

: Results and Standings :

PACIFIC COAST LEAGUE				AMERICAN ASSOCIATION			
W.	L.	Pct.		W.	L.	Pct.	
San Francisco	41	47	.565	St. Paul	44	42	.563
Seattle	51	52	.523	Louisville	51	41	.554
Vernon	54	55	.495	Indianapolis	50	41	.549
Oakland	54	55	.495	Columbus	44	48	.478
Salt Lake	50	59	.459	Kansas City	44	48	.478
Los Angeles	50	59	.459	Toledo	44	48	.478
Portland	47	61	.435	Milwaukee	42	49	.462
Yesterday's Results Seattle, 3; Los Angeles, 4. Oakland, 12; Salt Lake, 8. Vernon, 6; Sacramento, 5. Portland, 4; San Francisco, 11. How the Series Stands Los Angeles, 2; Seattle, 0. Sacramento, 1; Vernon, 1. Salt Lake, 1; Oakland, 1. San Francisco, 2; Portland, 0. Games Today Seattle and Los Angeles at Washington Park. Vernon at Sacramento. Portland at San Francisco. Oakland at Salt Lake. Games Next Week Los Angeles and Vernon at Washington Park. San Francisco at Oakland. Sacramento at Portland. Salt Lake at Seattle. NATIONAL LEAGUE New York 58 30 .659 Chicago 52 37 .587 Brooklyn 48 41 .539 Pittsburgh 45 41 .523 Cincinnati 47 46 .505 St. Louis 37 53 .411 Philadelphia 36 53 .404 Boston 24 66 .378 Yesterday's Results New York, 200 000 001—1 3 2 Cincinnati, 000 001 000—1 3 2 Batteries—McQuillan and Snyder; Rixey and Hargrave, Wingo. W. L. Pct. Brooklyn, 100 002 000—1 4 12 3 Pittsburgh, 100 002 000 00—3 10 1 Batteries—Deak, Decatur and Taylor, Deberry; Cooper and Smith. Boston, 000 001 100—5 9 0 Chicago, 410 000 00—5 9 0 Batteries—Barnes, Cooney and O'Neill; Kaufmann and Hartnett. Philadelphia, 350 000 000—8 9 1 St. Louis, 021 000 011—5 12 2 Batteries—Carson and Hemline; Stewart, Sherdell and Gonzales. INTERNATIONAL LEAGUE Baltimore 63 28 .693 Toronto 59 29 .673 Newark 49 42 .528 Rochester 50 47 .515 Buffalo 45 47 .489 Reading 48 49 .493 Syracuse 39 53 .424 Jersey City 46 51 .476 Yesterday's Results Buffalo, 4; Jersey City, 2. Newark, 5; Toronto, 8-5. Reading, 7; Rochester, 4. Baltimore, 4; Syracuse, 2. SOUTHERN LEAGUE Memphis 63 24 .650 New Orleans 59 37 .615 Atlanta 51 39 .567 Nashville 50 47 .515 Mobile 47 51 .480 Birmingham 42 51 .452 Chattanooga 40 53 .438 Little Rock 30 65 .316 Yesterday's Results Memphis, 7; Little Rock, 2. Atlanta, 8; Birmingham, 3. Chattanooga, 12; Nashville, 3. THREE-I LEAGUE Bloomington 48 38 .558 Evansville 46 38 .548 Terre Haute 41 41 .534 Peoria 41 41 .534 Decatur 37 48 .435 Danville 34 47 .420 Yesterday's Results Peoria, 15; Terre Haute, 9. Evansville, 7; Danville, 1. Bloomington, 1; Decatur, 4. AMERICAN LEAGUE New York 55 39 .576 Detroit 59 37 .615 Washington 52 40 .567 St. Louis 45 44 .506 Chicago 44 48 .479 Cleveland 44 48 .479 Boston 40 50 .444 Philadelphia 40 50 .444 Yesterday's Results (11 Innings) Detroit, 100 001 00—1 3 1 New York, 001 001 001—3 1 1 Batteries—Collins, Daus and Bassler; Shawkey, Gaston and Schang. Cleveland, 510 301 011—12 18 3 Boston, 653 171 00—16 20 1 Batteries—Coveleskie, Roy, Clark, Cheever, Brower and Sewell; Fulton, Ferguson, Quinn, Ehmke and Eving. St. Louis, 400 000 021—7 13 0 Philadelphia, 400 000 000—7 9 1 Batteries—Shocker and Severid; Gray, Burns, Rommel and Perkins. Chicago, 000 620 000—2 10 3 Washington, 000 400 000—7 1 1 Batteries—Faber, Cvengros and Crouse; Marberry and Ruel. WESTERN LEAGUE W. L. Pct. Dallas 17 3 .850 Fort Worth 17 3 .850 Shreveport 10 9 .526 Wichita Falls 10 9 .476 Beaumont 13 8 .615 Houston 8 13 .381 San Antonio 8 14 .363 Galveston 15 23 .396 Yesterday's Results Shreveport, 5; Houston, 4. Wichita Falls, 7; San Antonio, 3. Fort Worth, 6-2; Beaumont, 11-2. (Second game called: darkness). Dallas, 4; Galveston, 2. YESTERDAY'S HOMERS National No. Tls. Fournier, Brooklyn 1 22 Hornsby, St. Louis 1 12 Williams, Philadelphia 1 12 Maranville, Pittsburgh 1 11 Kaufmann, Chicago 1 11 American Ruth, New York 1 29 Burns, Cleveland 1 11 Manush, Detroit 1 3 Eager, Detroit 1 1 Total 184 National, 184; American, 248.							

Can This Engine Ever Wear Out?

PRESSURE-FEED LUBRICATION
 In the Oldsmobile Six engine you find pressure-feed lubrication to every revolving part. This superior lubrication system means long life.

BIG CRANKSHAFT
 Perfectly balanced. That means elimination of vibration—and vibration is another foe of long life.

OVERSIZE BEARINGS
 Airplane type—used in Liberty engines during the war. Require no adjustment or replacement for 30,000 or 40,000 miles.

SPLENDID COOLING
 Water flows all the way around all the six cylinders, valve seats and spark plug openings. Result—perfect cooling, no distortion, longer life. Valves are unusually large, cylinders are "honed" to a glass-like smoothness, perfectly-fitting grey iron pistons carry hammered rings. Result—perfect compression, surplus power and unusual long life.

You owe it to your pocketbook to investigate this Oldsmobile Six thoroughly.

C. H. HUNTER
 DEALER
 208-210 W. Broadway Phone Glendale 2373

OLDSMOBILE SIX
 PRODUCT OF GENERAL MOTORS

We Specialize in Lubrication
 Service Satisfaction

Eliminate Those Squeaks and Rattles
VAN & JACK'S Super Service
 Cars Called for and Delivered
 Brand at Colorado Phone Glen. 3544-J

OLD LIGHT SIX CLAIMS REVIEWED

Car Has Proved Its Merits In Year's Existence, Dealer Declares

The Oldsmobile Light Six has now been on the market and in use for nearly a year and the satisfaction of the users proves the claim that the Olds Light Six gives service equal to cars costing more money, according to C. H. Hunter, local Glendale dealer, 208 West Broadway, who states that hardly a week passes without someone coming in to tell him about a trans-continental trip and how well the car stands up.

"When the Olds Light Six was first announced everyone said it certainly is a lot of car for the money, but will it stand up?" says Mr. Hunter. "It has proven that it will, which was a certainty in the minds of those who know automobiles from a mechanical end. If a manufacturer puts certain things in an automobile it is bound to bring results."

The Oldsmobile now carries a motor in which every rotating bearing is under oil pressure, the main bearings are large bronze bearings of the type used in the Liberty airplane motors, and an extra large crank shaft is used. These three items are considered to be the backbone of a motor.

All models are on display at 208-210 West Broadway.

SECOND GAME IS WON BY SERAPHS

Seattle Nosed Out 4-3 by Angels; Indians Fail To Hit Timely

By BEN M'GUIRE
 For Southland News Service.
 LOS ANGELES, July 24.—Old Doctor Crandall served some bad medicine to the Seattle Indians yesterday in their tilt here with Los Angeles, Bagby being beaten by a 4 to 3 score which was a rather hectic result, considering the number of hits and the opportunities for scoring which didn't materialize.

Durst batted 1,000, getting four safeties in the matter of offense while Crane was negligent on the part of Indians' defense when he dropped Hood's pop fly, or let it go by, or something, while Twombly scored in the fifth canto.

Outhit, but not outdone, Oakland defeated the Salt Lake Bees with Boehler in the box, the score being 12 to 6.

Vernon nosed out Sacramento by a 6 to 5 score in a game of errors and hits, Shell's each scattering his offerings while Hall allowed too much freedom for the Tigers in the third and sixth.

San Francisco won and holds the top of the P. C. L. list today having landed on Portland for another victory, 11 to 4. The Seals scored 6 in the fourth.

The Giants wound up their western trip by trimming the Reds 3 to 1. McQuillan allowed only three hits.

TAGGING THE BASES

Fournier knocked out his twenty-second homer when Brooklyn beat the Pirates in the tenth, 4 to 3.

Thirteen extra base hits figured in the slugfest between the Red Sox and Indians, Boston winning 16 to 12.

The Phillies made baseball history when they won their fourth straight from the Cardinals 8 to 5.

Faber's weakness in the fourth proved disastrous for the White Sox, the Senators winning 4 to 2.

The Browns hurled the .500 mark when Shocker shocked the Athletics to a 7 to 0 defeat.

The Way East

UNION PACIFIC SYSTEM

OVERLAND ROUTE
 Information & Tickets
 129 So. Brand Blvd.
 Phone Glendale 372

Bargains Offered by Millea's Find Demand
 Crowds of shoppers took advantage of the splendid "Dollar Day" offerings today at Millea's store at 119 North Brand boulevard. Details of the big sales event were given last night in the Millea display advertisement in The Glendale Evening News. Living up to the reputation of the store, stock offered on sale measured up satisfactorily to the advertisement and were in big demand. Incidentally, bargains are offered every day at Millea's and shoppers know they can save money by trading in Glendale.

Candy and Fountain Specials Are Listed
 "Those who have a sweet tooth were attracted by the Glen Inn "Dollar Day" display advertisement appearing last night in The Glendale Evening News. In addition to the usual good, wholesome food served at the Inn at 152 South Brand boulevard, there were special offerings in Albert Sheetz Mission candies, and in banana specials at the fountain. These gave Glendale people a sample of what they can find every day at the Glen Inn.

Men Take Advantage Of Offer on Cleaning
 The Fanset Dye works at 213 East Broadway through their display advertisement last night in The Glendale Evening News announced special "Dollar Day" prices to give Glendale people a chance to take advantage of their well known super service. As a result of the special offering, countless men's suits were cleaned and pressed throughout the day and the satisfaction of customers was indicative of the Fanset slogan, "None Better."

Cheap imitations of American chewing gum are popular in Hamburg, Germany.
 condition this morning is reported as most satisfactory.

Auto Insurance that Protects
 It is said that a wise man doesn't tempt fate. He can't afford to take a chance with circumstances over which he has no control.
 —Bear in mind this fact: An accident is threatening your car at all times.

Let us completely insure your car with our
BLANKET POLICY
 That Covers Your Car Against Accident, Liability, Theft, Fire or Collision

CLINTON L. BOOTH
 AUTOMOBILE INSURANCE EXCLUSIVELY
 116 West Colorado Phone Glendale 362

Announcing Our Appointment As Glendale District Dealers
 — for —
Pierce-Arrow Motor Cars
Motor Sales Co.
 406 E. Colorado. Phone 790-M or 4027

Glendale Welcomes Visitors to Presbyterian Synod

Welcome Ye Presbyterians
to the
"Fastest Growing City in America"

We Have 50,000 Population Now
Another 50,000 On The Way—
You Had Better Join the Crowd

HORN and McDILL

W. A. Horn REALTORS Geo. D. McDill
Insurance Of All Kinds—Surety Bonds
Suite 620, Security Bank Building

Take Home a Box of Albert Sheetz
Famous Mission Candies

as a souvenir of your stay in Glendale

We extend a hearty welcome to visitors to the Presbyterian Synod and wish to call attention to the fact that

The Glen Inn

152 So. Brand Blvd., Glendale

has been appointed one of the official eating places. Meal tickets can be obtained at the church.

"The Largest and Coolest Dining Room in Glendale"

We Welcome

the visitors of the Presbyterian Synod to Glendale

Southern California Gas Company

124 North Maryland Ave.
Glendale

DEPENDABLE SERVICE

To Our Synod Visitors

—You will find our Gasoline and Service Station conveniently located, just a block this side of the church. Don't hesitate to call on us—no matter what your motor needs.

Wm. H. Hooper & Co.

222 East Broadway

Distributor for Miller, Michelin, Samson and Kelly-Springfield Tires and Tubes—Watson Stabilizers

GREETINGS

To Delegates To The Tri-State Presbyterian Synod In Glendale July 24 to 31.

It is our wish that your stay in Glendale will be a most pleasant one.

THE

First National Bank
IN GLENDALE

1267 S. Brand Blvd., at Cypress—Glendale
W. W. Lee, President J. A. Logan, Cashier



Telephone

Glendale

3313

Suzanne Smart Hats

Individual Designing and Make Over Reproductions of Imported Models in Glendale's Most Efficient Work-room

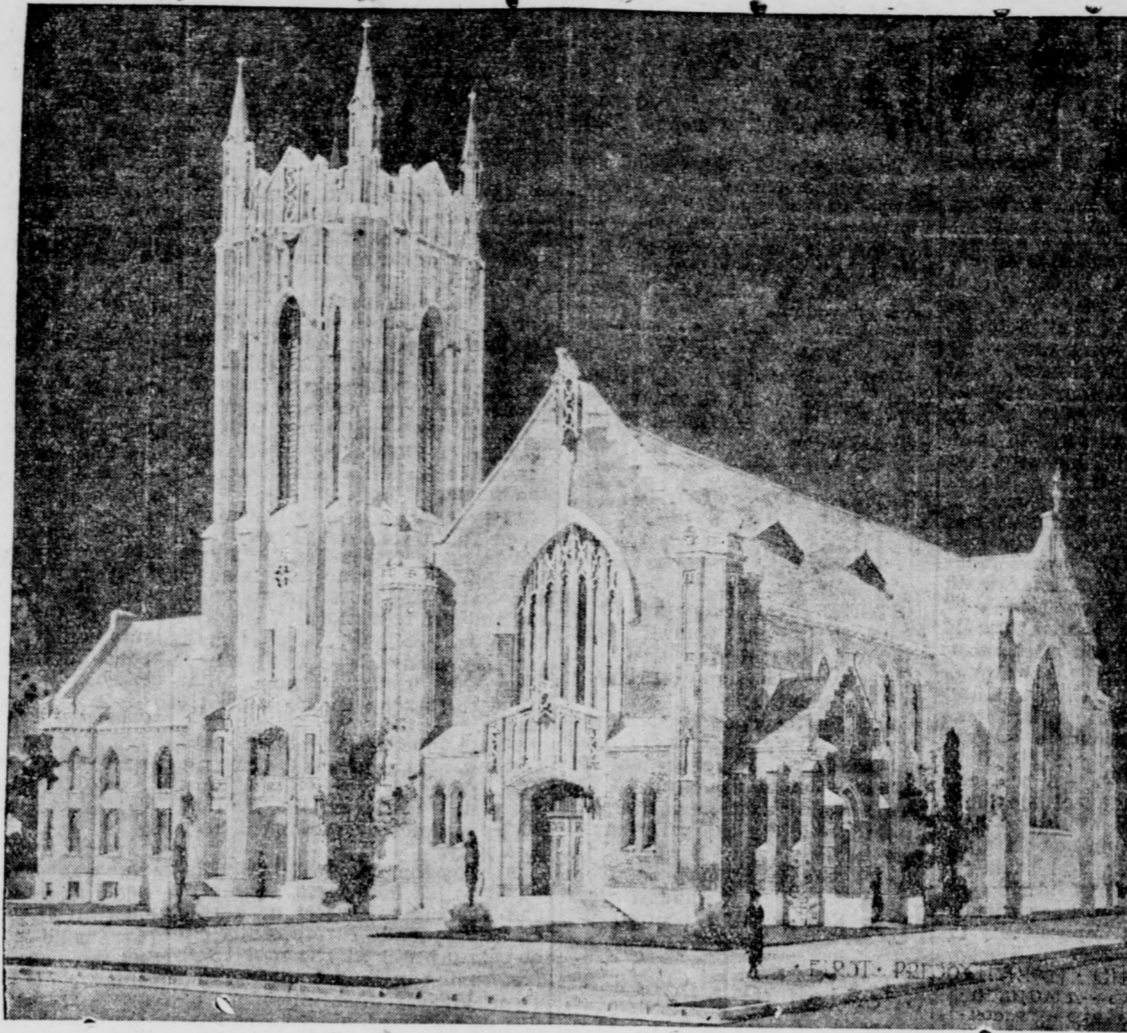
Exclusive Agents for Famous
KNOX HATS

Showing of Advanced Fall Models Now

Suzanne Smart Hats

144-A South Brand Blvd.
Next Door Circulating Library

Glendale Presbyterian Church Where Synod Will Be Held from July 24 to 31



We join with all Glendale in welcoming the representatives to the Presbyterian synod during their week's stay in our city.

Glendale Typewriter Shop

H. C. Schumacher, Prop.

Royal and Corona Typewriters
Sell, Rent and Repair
109 S. Brand Glen. 853

Synod Representatives!
WE SELL

DIRECT ACTION GAS RANGES
No Bottom In Oven

Equipped with the famous Lorain Heat Regulator. Let us demonstrate them to you during your stay in Glendale.

Attend Our Cooking Class
Wednesday or Friday
2 p. m.

Coker & Taylor

209 South Brand Boulevard
Phone Glen. 647
Open Saturday Nights

We Wish to Extend
HEARTIEST GREETINGS TO THE VISITORS OF THE PRESBYTERIAN SYNOD
Especially the Ladies

who will find our splendidly equipped Salon a delightful place to fulfill every desire in the art of Beauty Culture.

The Vanity Salon

300 Security Bank Bldg. Mrs. Ina C. Rankin
For Appointment Phone Gl. 81. Open Fri. and Tues. Eves.

Synod Representatives

Why not avail yourselves of the conveniences of our banking institution during your stay in Glendale?

Glendale Savings Bank

Glendale, Calif.

W. S. Perrin, Pres.
E. Francy, Cashier

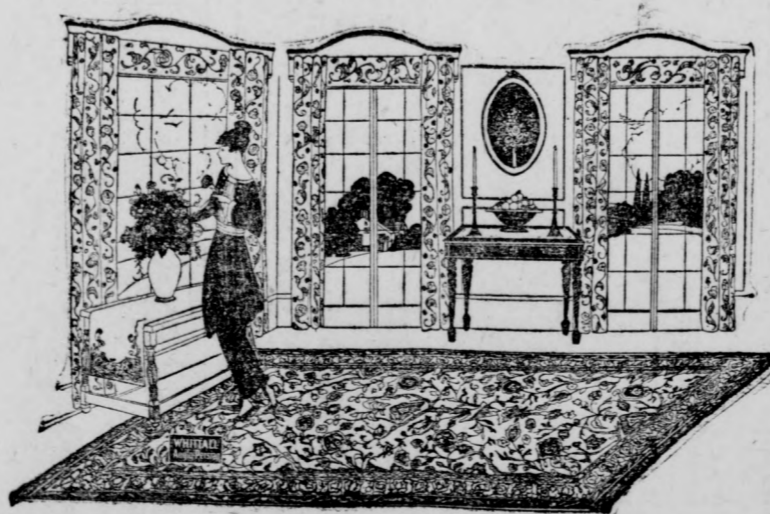
Delegates to the Presbyterian Synod

will find this an attractive inexpensive place to eat

C. & S. Cafeteria

Our Motto: Courtesy & Service
222 No. Brand Blvd., Glendale
Our New Ventilating System Is Now In Operation

We Welcome You to Our City and Our Store



Trice Furniture Co.

118 W. Broadway

Extending
The Hand of Welcome
to the
Presbyterian Synod

May Your Visit in Glendale Be Pleasant and Long Remembered.

PENDROY'S
BRAND AT HAROLD

PRESBYTERIANS!
Welcome to Glendale

If in need of footwear during your stay in Glendale we will be happy to serve you

Winkler's—

BUSTER BROWN SHOE STORE

122 N. Brand Blvd.

Here's a Hearty Welcome

For The Delegates
to the

Presbyterian Synod

Feel free to call on us for any service in our line

ROBERTS & ECHOLS

Broadway at Brand

Phone Glendale 195

WE WELCOME THE PRESBYTERIANS TO GLENDALE

—and promise them prompt and satisfactory service in helping keep their wardrobe immaculate while in Glendale

Fanset
DYE WORKS
None Better

213 East Broadway

Phone Glendale 155

Headquarters for California Flowers
Prompt, Efficient Service

Glendale Florist

120 S. Brand Blvd.

CUT FLOWERS OF QUALITY

Floral Designs Decorations

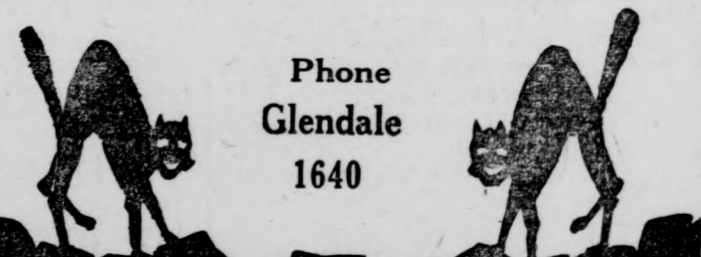
J. T. Allen

Glen. 1155

WELCOME

PRESBYTERIAN SYNOD!

An invitation is extended to visit the most unique and attractive tea room in Southern California



Phone
Glendale
1640

The Alley Inn
Tea Room De Luxe
210 1/2 So. Brand Blvd., Glendale
The Atmosphere of your own home

Magazine and Feature Page

BUTTERFLY

By KATHLEEN NORRIS. Copyright, 1924.

CHAPTER X
"Perhaps so," Hilary answered, suffocating. She turned to her desk, opened a drawer, fumbled within it, and wheeled back to face him again.

Theatres News Notes

One of the snappiest comedies of the season is "A Mile-a-Minute Kendall," now being presented at 8 o'clock nightly by Murphy's Comedians at their tent theatre on Stocker street, Casa Verdugo, between Brand boulevard and Central avenue.

THE GLENDALE
Hoot Gibson in "40-Horse Hawkins" opens at the Glendale theatre today and continues Friday and Saturday.

THE T. D. & L.
"Un-guarded Women" concludes at the T. D. & L. theatre today. The picture Friday and Saturday will be "The Perfect Flapper."

urged, seeing her omission in her face. "Oh, go on! Old Kraut wasn't there to ask, and Mr. Spaulding is in Philadelphia. Craig Spaulding won't care—he's going to Bermuda anyway, next week, with the Vanderworts!"

THE GATEWAY
Gloria Swanson in "Manhandled" opens at the Gateway theatre today and continues Friday and Saturday.

Pioneer Pie Baker Dies, Aged 101 Years

STOCKTON, July 24.—Mrs. Kezlie D. Curtis, known since 1850 as "The Bakery Girl," is dead here at the age of 101 years and six months.

Offer Car to Biggest Family at State Fair

SACRAMENTO, July 24.—An automobile has been donated by the Sacramento Chamber of Commerce for the biggest family in attendance at the State Fair.

Uncle Wiggily

By HOWARD R. GARIS

UNCLE WIGGILY'S RADIO

"Dear me, I hope Uncle Wiggily's rheumatism isn't paining him again," said Nurse Jane Fuzzy Wuzzy to herself as she walked softly about in the hollow stump bungalow.

"I brought this home last night when you were asleep," said Mr. Longears to Nurse Jane. "I got Havana, San Francisco, London and Paris, and now I'm going to try and get New York. Just give me a soft-boiled cabbage and a lettuce sandwich—that's all I want for breakfast now. I'm going to tinker with my radio all day!"

Nurse Jane sighed, but she said nothing. "It's going to be just like when he played golf," she thought. "However, I'm glad he isn't ill. And the radio will keep him jolly."

All day long Uncle Wiggily listened to his new radio, tuning in and hearing a concert or a talk on how to make turnip candy out of potato peelings. The rabbit was just tuning in on a bedtime story about himself when, all of a sudden, the door of his room opened.

"Come and hear this, Nurse Jane," he said, thinking it was the muskrat lady. "It's quite clever." But instead of being Miss Fuzzy Wuzzy, it was the Woozie Wolf.

"Gurr! Gurr!" growled the Wolf, showing his teeth. "Which of your ears shall I nibble first, Uncle Wiggily?"

"Neither one, if you please," said the bunny, taking the head phones off. "I don't want my ears nibbled!"

"But I am going to nibble them, all the same," growled the Wolf. Uncle Wiggily thought of his new radio. If his ears were nibbled he never could listen in again.

"Yes," growled the Wolf. "I love music! Let me hear some!"

It is estimated that 13,000 laws are enacted each year in the legislatures of the states.

Phone HOLLY 2451-2433 Res. Phone, HEMstead 8462
We Pay For All Phone Calls
HARVEY Phillips Truck and Transfer
General Hauling—Transfer—Trunk and Piano Moving
We Make Resort and Mountain Trips
5847 Santa Monica Boulevard HOLLYWOOD, CALIF.

WHITE GOLD RING MOUNTINGS
Choose from our new assortment of beautiful White Gold Ring mountings and let us reset your stones at a very small charge.

WATCH AND JEWELRY REPAIRING
You'll also value very highly our expert Watch and Jewelry Repair Service. Prices are very moderate in every instance—work absolutely guaranteed.

WATER PROOFING
We will waterproof your basement walls and floors with a special waterproofing compound that is guaranteed to last for years.

WATER PROOFING
We will waterproof your basement walls and floors with a special waterproofing compound that is guaranteed to last for years.

PROFESSIONAL CARDS

Dr. Otey's Health Studios
OSTEOPATHY
Kirkville Graduates Only
S. E. Corner Brand and Wilson
Glen. 2201. Folding Tables
for Home Treatments
Home or Office. Day or Evening

Electronic Reactions
Diagnosis and Treatment
ABRAMS METHOD
DRS. LYND AND LYND
106 E. Wilson (Cor. Brand)
Phone Glen. 2222
Office or home treatment; with genuine Abrams equipment.

Dr. Joseph Albert Kleiser
103 1/2 South Brand Boulevard
Corner of Broadway
Phone Glendale 1335
Doctor of Dental Surgery
Oral Surgeon
All Branches Dentistry
Dr. L. Francis Guyton
Eye, Ear, Nose, Throat and Goitre

Viohl & Brown
SIGNS
703 S. Brand Blvd.
Phone Glen. 1761

BUILDING MATERIAL EXHIBIT
Hoosier Cabinets, Peerless Built-in Furniture, Murphy In-a-Dor Beds, Moody Mattresses, Imitation Tile and Compositum Mantels, Electric Light Fixtures, Refrigerators \$8.95.

Glendale Sales Company
216 EAST BROADWAY
Phone Glendale 2095

Examination Free
KRYPTOK LENSES
INVISIBLE BIFOCALS
Far or Near Vision
One Glass
\$9.75
WHY PAY \$16 TO \$18?
OFFICE IN RESIDENCE
Low rent, small overhead expense
saves you over half usual charge.

DR. D. E. MASON
20 yrs. experience fitting glasses
Eye Specialist Physician
215 E. Garfield, Glendale

G. H. Herald, city marshal, has been appointed city milk inspector to succeed C. H. Ravenscroft, resigned.

On request of City Trustee Grist, the city manager and other officials are requested to make inquiries into conditions of certain cow corrals on Howard street, between Second and Third streets.

To feed some lines of the Victoria railways of Australia, the Railway Auxiliary Motor Co., Ltd., has been organized and will operate a number of large motor trucks in the interior country.

FORD COUPE
FREE!
Ever Ready
Service Station
Central Ave. at Broadway

AUTO TOPS
Plate Glass
ROYER-WALTON
117 West Harvard
Glendale
Phone Glen. 2874-W

Palace Dry Cleaners
We do our own cleaning which enables us to give you better work and better service than any one in Glendale.
Ladies' Garments a Specialty
Glendale 2922—Glendale 36-J
209 N. Glendale Ave.
Glendale, Calif.

CESSPOOLS
E. H. KOBER
Overflows a Specialty
110 West Broadway
Office Phone, Glen. 889
Night Phone, Glen. 2239-W

DUMP TRUCKS
1 1/2 AND 2 YARD CAPACITY
We operate a fleet of small dump trucks and specialize in excavating, moving of dirt, street work, and general clean-up jobs, anywhere.
ANDERSON & WOOD
105 E. Los Feliz Rd. Glendale 3404

ACME CESSPOOL CO.
CLEANING & CONSTRUCTION
807 N. Commonwealth, L. A.
Phone Drexel 3158, Dunkirk 3489

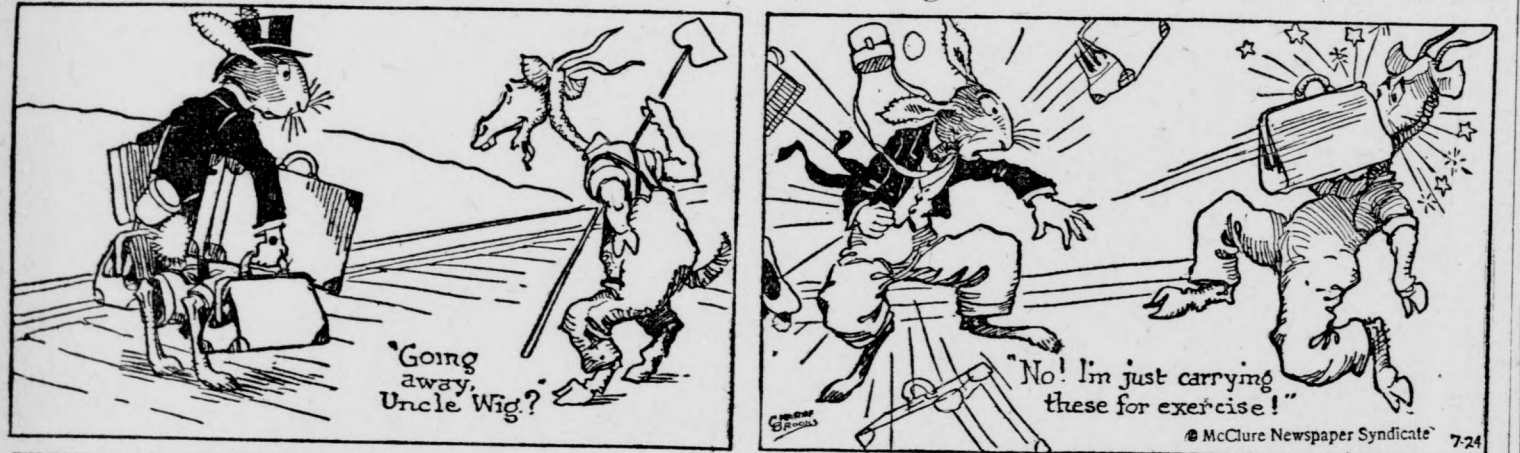
PLUMBING
Repairing a Specialty
JAY F. SMITH
110 W. Broadway, REAR
Phone Glen. 889

CESSPOOLS
Glen. 2227-W 4111 Parkdale
Sewers and Overflows
Anywhere, Any Size
Estimates Gladly Given
P. W. BAKER

Moving? We have large vans. Reliable, careful help. Prices reasonable.
Call Glen. 907. Our Representative will call and give you an estimate.
GLENDALE INTER-URBAN EXPRESS
Authorized Carrier, Los Angeles to Glendale, 4 Trips Daily.
Warehouse—rear of City Hall, Glendale, Calif.

BETTER DENTISTRY—For Much Less
No Hurt—No Nervous Strain
DR. BACHMAN, 831 E. Windsor Road
Night or Sunday, Phone for Appointment, Glen. 1933-W

UNCLE WIGGILY'S TRICKS—It Served Him Right!



"CAP" STUBBS—Rehearsals Aren't Going So Well!



THE BAXTER BEASLEYS—



By EDWINA



—by GENE CARR



