

Historic, Archive Document

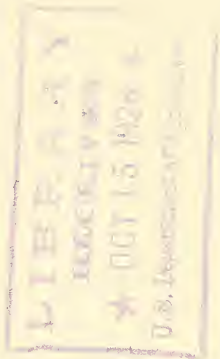
Do not assume content reflects current scientific knowledge, policies, or practices.

OUR PECAN TREES PRODUCE
 THE FINEST PAPER SHELL PECANS
WASS PECAN COMPANY
 BEST PECAN GROWERS IN THE WORLD
LUMBERTON, MISS.

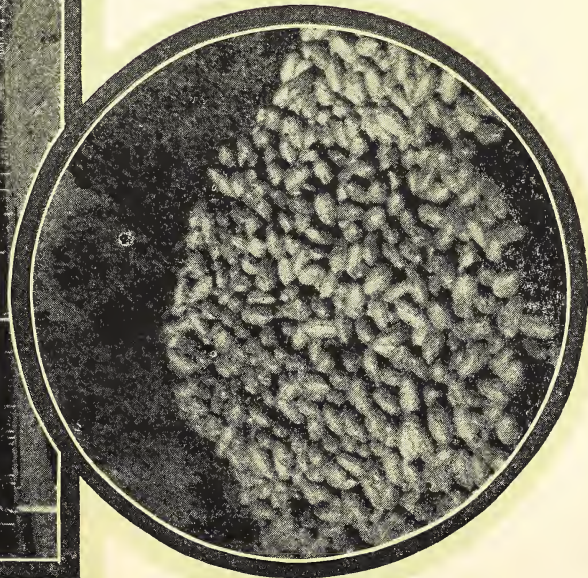
1c PAID

Lumberton, Miss.

Permit No. 1



1927



*L. C. Corbett
 U. S. Dept. of Agr.
 Bureau of Plant Industry
 Wash. D. C.*

We Want to Thank You

In going to press with this catalogue—one million copies—we especially desire to thank our thousands of friends and customers not only for the fine business they have given us but for their belief in us, their loyalty to us and confidence in us. The kind words you have said to your friends and prospective customers for us is appreciation a plenty and a big reward for the hard work and many uphill struggles we have had in trying to give to you the finest pecan trees in the world and service with them that cannot be excelled.

Eighteen years ago this was one of the smallest nurseries in the South growing and selling pecan trees. Today it is over four times the largest pecan nursery in the world. Careful, energetic and scientific work coupled with our well known honesty, reliability, conservatism and natural love and great belief in the papershell pecan has made our success in growing papershell pecan trees remarkable. We now enjoy the pleasure of being recognized as the most scientific and reliable experts in the South.

You are Welcome at the Bass Pecan Nurseries

We want you to see our strong, straight, thrifty, vigorous, well rooted and highly BRED-UP pecan trees and compare them with any others anywhere in the world. We have no secrets and nothing to hide. We have the most and finest pecan trees in the world and only want a chance to prove it to you or your friends. Here you can see orchards loaded down with pecans. You can see thousands of small trees blooming and bearing in the nursery rows—often not as high as your head. You will see thousands and thousands of fine trees to pick from—“prettier than a picture”—our Visitors say.

Our Guarantee to You

All our BRED-UP Pecan Trees are absolutely guaranteed to be true to variety, strong, thrifty, vigorous, well dug, well packed and to reach you in excellent condition. We further guarantee upon satisfactory proof that any tree we sell you does not prove true to variety, to refund you promptly in cash FIVE TIMES the amount you pay for it.

World's Record Made by Our Trees

The following is the remarkable bearing record of nine of our Extra Special pecan trees set out the last of February 1923 for Dr. D. B. Stevenson of Lumberton, Miss. Most all of these trees bore pecans the first year set out. They were our largest size trees and have been given the very best of attention by Dr. Stevenson. He has fertilized the trees very heavily with barnyard manure and worked around them often so that weeds and grass would not get the fertilizer. Results have been remarkable. The record that follows was carefully kept by Dr. Stevenson who is one of the best known physicians as well as loved and respected citizens of South Mississippi and is absolutely authentic as he gathered and weighed the pecans himself. The trees bearing the heaviest crops were the ones most favorably located. Trees with smallest yields were greatly handicapped by being near big oaks, sidewalks, etc. You will please notice the nuts were gathered in October and November of 1925—actually before the trees had been set in the ground three years.

Tree No.	Tree Name	age	2 years	8 mo.	yield
1	Bass Papershell	2	8	25½ lbs.	
2	" "	2	8	15 "	
3	" "	2	8	16 "	
4	Success	2	8	17½ "	
5	"	2	8	28½ "	
6	Nelson	2	8	12 "	
7	"	2	8	10 "	
8	Success	2	8	4½ "	
9	"	2	8	4 "	



Fine Papershell Pecans from Our Early Bearing Trees.

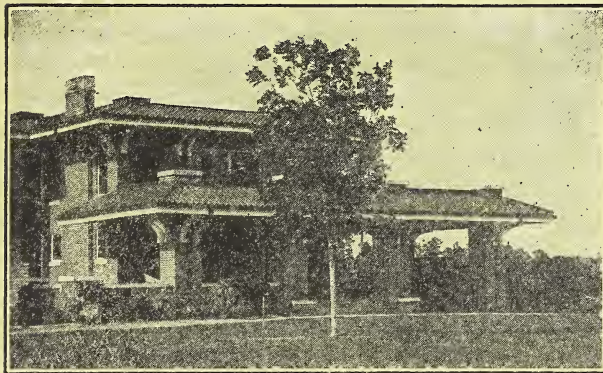
Expectation—With Pecans

It is a fine thing to dream about owning a beautiful pecan orchard in a few years that will enable one to forget the toil, worry and nerve-wrecking experience we all have to go through to make a living. It is a still finer feeling to actually make this dream come true. And it is so easy—in proportion to the actual value. None of us that are worth a continental want to be a burden to our children or their children—yet over half the parents are. We ought to leave them a heritage and at the same time be protected against the infirmities of old age ourselves. A Papershell pecan orchard is the ideal investment for this purpose. The trees you plant will be a living monument to your good judgment and foresight. The pecan lives for hundreds of years—it is estimated the oldest tree is over 1200 years old. The older the trees get the less work and attention they require and the more profitable they get. As you go down the hill, on account of old age, the pecans go up the hill for the same reason. No other tree, no other plant and no other investment that we know of actually does increase in value as it gets older and at the same time decrease in worry, cost and work to the owner. It is said that not one single pecan tree out of all in the world has ever died because of old age. You can own an investment that is permanent, sure and profitable and beautiful, too. Put on today the bridal of success for a happy comfortable and profitable old age by planting a pecan grove and throw off the halter of delay that causes thousands of men and women to be an object of charity and pity in old age.

Realization—With Pecans

\$1200 per acre off 18 year old trees sounds good, is good and is absolutely true. Mr. I. E. Bass, the founder of this business, was 58 years old when he planted his first pecan tree. Friends and neighbors said he would never live to see them bear. Still he has retired and is living easily, comfortably and satisfactorily on the returns from these trees. Just look at the 18 year old tree on the back of this catalogue—producing at the rate of \$1200.00 per acre. The father of this business has greatly enjoyed expecting things from his pecan orchard but you can just imagine how much more he has enjoyed realizing them. The wise neighbors and friends predicted the trees would die, they would not bear, they would not pay and lots of other things. To hear them tell it a man was crazy to plant pecans. Today the man who did plant and care for the trees is taking life easy, the men who failed are often the object of pity and charity at a time in life when their weak, infirm and worn out bodies prevent them from rectifying their mistakes. Don't make the same mistake—just plant our BRED-UP and early bearing pecans today and look the future in the eye without fear of old age or bad investments we are all liable to make.

Papershell Pecans Pay Remarkable Dividends



Our Home—Pecans Built It.

Below is a fair idea of what you could expect from just five of our \$1.00 each pecan trees if well cared for and the nuts were all sold and money put out at compound interest. These figures are based on the record of one tree set out in February 1893

and money put out at compound interest in a saving bank. The figures show the sales for each year in one column and amount with interest in another. The pecans were sold for 50 cents per pound which is a fair price for them although we often get 75 cents per pound.

Year	No. Pounds	Sales for year	With interest to 1914
1897	35	\$ 17.50	\$ 33.63
1898	52.52	26.26	49.52
1899	67.32	33.66	60.95
1900	135	67.50	117.53
1901	80	40.00	66.97
1002	225.50	112.75	181.39
1903	400	200.00	303.28
1904	605	302.50	449.48
1905	655	327.50	467.71
1906	480	240.00	329.47
1007	150	75.00	98.96
1908	845	422.50	535.83
1909	570	285.00	347.41
1910	980	490.00	675.12
1911	1530	765.00	861.52
1912	980	490.00	530.40
1913	1720	860.00	894.74
1914	725	362.50	332.50

Totals 18 10,235.34 Sales \$5,117.67 Plus Int. \$6,366.41

Now remember this \$6,366.41 is just a dividend. You still have the trees left to keep right on increasing in value as they get older and as you need to lean on them more. What else in the world will make such a record—just \$5.00 makes you \$6,366.41 in a little over twenty years and you have left the original investment. Put out a pecan orchard if you can but if not an orchard by all means a few trees and lay up in store like the squirrel against the winter months—or, if you please—old age.

Pecans Have Highest Food Value

Dr. J. H. Kellogg, of the famous Battle Creek Sanatorium, Michigan, says: "I regard the pecan as one of the very finest of nature's choice products. A pound of pecans contains more nourishment than any other known food. In the next century nuts will largely, if not entirely, take the place of meats on the bill of fare—and the pecan will assume its rightful place at the head of the list of nourishing and digestible foodstuffs." Be sure to plant you an orchard or at least a few trees this year and reap some of the great profits in store for growers of the finest pecan nuts.

Pecans are the Safest of All Investments

No investment is safer than a pecan orchard of our fine trees well cared for, because the trees actually start paying the day you set them out. You can spend \$1,000, say, in setting out our trees, etc., and by the



Young Children Love to Gather Fine Papershell Pecans.

time you get them all out you will not take less than twice this sum for them. Each year they grow they get larger and more valuable. The older the trees get the more profitable they get and the less attention they need. You have got great risks to run in losing your other investments through Bank failures, business depression, un-scrupulous dealers, etc. With pecans you and nature are boss. Pecans will last hundreds of years getting more profitable each year with less attention and will pass through panics, fires, droughts, freezes and other calamities unscathed.

Budded vs. Grafted Pecans

There are no differences in the growing or bearing characteristics of budded and grafted pecan trees. You can take buds or grafts from any kind of a pecan tree and bud or graft them into any other kind of a tree. Some nurserymen get better results in budding and others get better results in grafting. They usually claim the one they do best is best. Budded fruit trees are often better than grafted fruit trees because buds have to be put on whole roots. Whereas often a single root is cut up to make several grafts. With pecans the whole root has to be used whether budded or grafted and we would not turn around for the difference in our own plantings. Grafting is done when there is no sap in the trees and the scions or grafts used must also be dormant. January, February and March are the best months. Budding is done when the trees are full of sap and the bud sticks used must be so full of sap that the bark will peel off readily. We both bud and graft our pecan trees and consider one as valuable as the other.

Why We Grow Budded and Grafted Pecan Trees Exclusively

No planted pecan nut will reproduce the parent tree in all respects. You might plant the largest pecan nut in the world and when it came to bear the nuts would be the smallest you ever saw. There's a reason, and it is this: budded and grafted trees have been improved only in recent years and the tendency in pecans, as in all other things, is to breed back to the way they were produced for the longest period of time.



Our Mother and Father, Happy in Old Age, Gathering Fine Papershell Pecans.

Bass Grown Budded and Grafted Trees Bear Early

In all sections of the South our trees are making records as the earliest bearing pecans to be planted. Many have planted them in actual tests and in all cases our trees have come into bearing earlier, borne bigger and finer pecans and more of them. Thousands of our young pecan trees actually bloom and bear in the nursery row—trees often not as high as your head. Buds and grafts are selected from early and heavy bearing parent trees in our own orchards instead of taken from nursery trees that have never borne as so many other nurserymen do. In the end quality

counts every time. It actually costs you no more to dig the hole and plant our finest trees properly than it does the sorriest cull on the market. It takes no more land. Our trees bear earlier and bigger and finer nuts for all time and in the end are much cheaper than inferior trees that have to be sold at lower prices if at all.



**Note Heavy Blooming of One of Our Fine
2-Year-Old Pecan Trees—It Pays to
Plant the Best.**

A Substantial Life Income

And a handsome inheritance for life for those who are dearest to you! Think what it means! Think what it means to be independent, to be able to look into the future without fear of old age, failing health, accident, increasing family responsibilities, money panics, uncongenial employment—troubles which overtake 98 people out of every 100. Can you afford to put it off another year?



Our Fine, Young, Straight, Thrifty, Vigorous, Well Rooted Pecan Trees in the Nursery Row.

BIG BUSINESS MEN PLANT PECANS

It is true that un-scrupulous orchard promoters and exploiters as well as many nurserymen, and their agents, have worked off thousands of scrub pecan trees on men and women who were anxious to get a start of this choicest of all nuts. But the profits from the fine trees that have been planted and cared for have been so big and the future so bright that Lawyers, Doctors, Merchants, Bankers and other leading business men are planting pecans each year.

The truth is that thousands of men and women in the South—the natural home of the papershell pecan and the only place it can successfully be grown, are now owners of orchards that \$1000 per acre would not buy. Pecan planting is no longer in the formative period but is already on a sound business basis and thousands of dollars are being invested each year in this wonderful new industry that promises to outrank any other horticultural development in the South.

GROW YOUR DOLLARS ON PECAN TREES

We have never enjoyed anything more than gathering big fine pecans. It is almost like picking up dollars. Last year we shook down 52 pounds of big fine papershell pecans off our six year old trees which we sold for 50c per pound or at the rate of \$312.00 per acre. We had one customer get 28 pounds of pecans off one of our trees that was not set out quite three years. Just think of \$14.00 for the nuts off a tree before it had actually been out three years. They are easy to grow, easy to gather and easy to sell. Plant a Pecan Orchard and get ready to quit work and your many worries in old age.

Pecan Growing a Permanent Investment

The Improved bred-up pecans we sell usually begin to bear the second or third year set out and rapidly increase the size of the crop as the trees get older and larger. The older the pecan tree gets the less work and attention it requires—sending its roots down into the soil so deeply that it feeds on elements unreached and untouched by the root system of any other tree or plant. The largest crops of pecans on record have all been made by the largest and oldest trees and after they have reached a stage that they require little work and attention. No tree is known to have ever quit bearing on account of old age. Trees estimated to be over 400 years old are still bearing and growing vigorously.

Over-Production Impossible

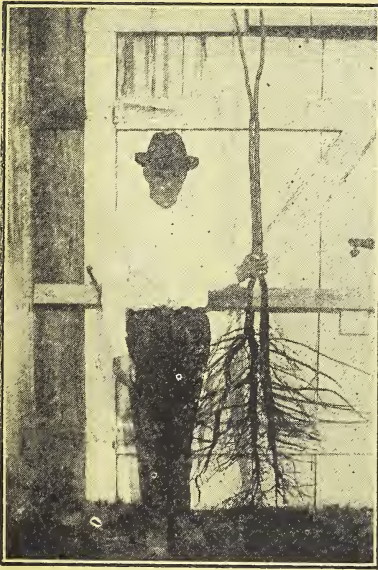
We have the whole world for a market for our fine pecans and 12 months in the year in which to sell them. The South alone can grow the fine papershell pecans profitably. Nuts and nut products are everywhere becoming more popular. The papershell pecan is conceded to be the finest flavored and richest nut in food value that grows. There is great profit in selling pecans for one-fifth what they now bring. Great doctors are advocating the use of more pecans and say that the day is soon coming when they will be used as a regular diet just as flour, potatoes and meat. Not one person in 5,000 has yet tasted the pecan and all who taste them like them and demand more.



A Beautiful Avenue Shaded With Fine Papershell Pecan Trees.

The demand for pecans is increasing faster than the production. This is the safety valve on all industries. Thousands of trees that are being set out are cheap and inferior varieties. Thousands of other trees will not be cared for and given a chance to do anything. Millions of dollars worth of nuts have been imported each year into the United States before the war. Now many of these trees are destroyed and will never be able to compete with the pecan.

Cultivation



The Finest Rooted Pecan Trees in the World—Bar None.

of nuts annually. Other trees of the same age, and not cultivated, are but four inches in diameter. To secure the best results, manure, care and cultivation must be bestowed upon the trees."

Fertilizing

If you desire to plant on land rather poor in fertility, thoroughly mix with the soil two or three shovelful of well-rotted compost when you plant the tree, or one or two pounds of bone meal. The best fertilizer after the tree is planted is to scatter manure around the tree. The more the better—one-half to one bushel to the tree, if possible. Do not bank it up around the tree, but scatter it around it for two or three feet. When it rains the substance will be taken down to the roots. Put this around your trees in the late winter if possible, so that the trees will be able to get a fine growth in the spring. When the trees are old enough to bear, use potash in some form—wood ashes will do.

Fine Papershell Pecans For Sale

We grow thousands of pounds of pecans each season and can furnish you mighty fine pecans at from 35c to \$1.00 per pound, depending on amount you want, quantity, etc. Tell us your wants and get our prices, etc.

These Are the Three Most Popular Varieties



Stuart

The Stuart is ranked at the top of the entire list of fine papershell pecans as a commercial success. It is one of the oldest of the budded and grafted varieties and has been tried out thoroughly in more places than any other pecan. The nuts are large to very large, fill unusually well and always command a good price. The Stuart is a beautiful nut and the tree is the hardiest and easiest to grow, being very vigorous and healthy and a heavy bearer. A plate of beautiful Stuart papershell pecans is shown in picture above. You are safe in planting the Stuart pecan for it is giving better results than any other variety in the South today. Our bred-up, budded and grafted Stuart trees are extra choice in every way.

Special Prices on Large Orders

One to four trees take the each rate price.
 Five to nine trees take the five rate price.
 Ten to forty-nine trees take the ten rate price.
 Fifty and up take the one hundred rate price.
 Special prices will be gladly quoted on more than one hundred trees. Tell us the number you want and we will gladly quote you.



Schley

Our experience with the Schley is that it is an ideal pecan. It is an early bearer. Fills very full. It is thin shelled and cracks easily. The nuts are of medium size and bring the highest market price. Our stock of bred-up Schley trees make certain that those you plant will thrive and bear well if properly cared for.

PRICE LIST

BASS' BRED-UP EARLY BEARING, PAPER-SHELL PECAN TREES

Size	Each	Five	Ten	100
2-3 Feet	\$.90	\$ 4.25	\$ 8.00	\$ 75.00
3-4 Feet	1.00	4.75	9.00	85.00
4-5 Feet	1.20	5.75	11.00	100.00
5-6 Feet	1.35	6.50	13.00	120.00
6-7 Feet	1.50	7.25	14.00	135.00
7 Feet to Large	2.00	9.00	16.50	150.00
Large	2.50	2.00	22.50	200.00
Extra Large	3.50	17.00	30.00	275.00
Extra Special	4.00	19.00	35.00	325.00

NO ORDERS ACCEPTED FOR LESS THAN \$5.00

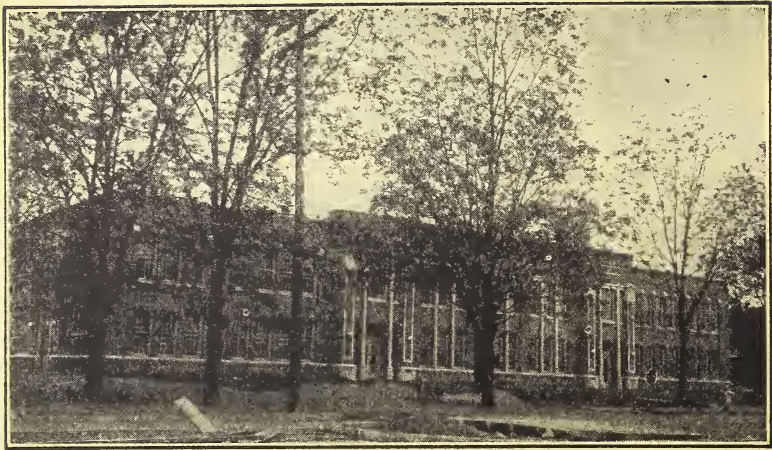


Success

The Success has properly attracted more attention than any other variety of papershell pecan that has been recently introduced. Although it is not the largest nut, the kernel has proved to be the heaviest in a test of fourteen varieties made during recent years. The Success is ovate in form. It has a thin shell and cracks readily. The kernel is plump and heavy and of excellent flavor. The tree is of good, sturdy growth and a heavy bearer. The Success is one of the most popular varieties of our fine, bred-up papershell pecan trees.

Satisfaction Guaranteed or Money Back

For the finest trees, place your order with us at once. Ten per cent of the total amount of your order will reserve for you the choicest trees in our nursery. Remember, we absolutely guarantee perfect satisfaction. If you are not pleased in every respect with the trees we send you, we expect you to return them at our expense and we will refund you the full purchase price.



Stately, Majestic, Profitable Pecan Shade Trees Around This Fine Mississippi School.

Let Pecans Educate Your Children

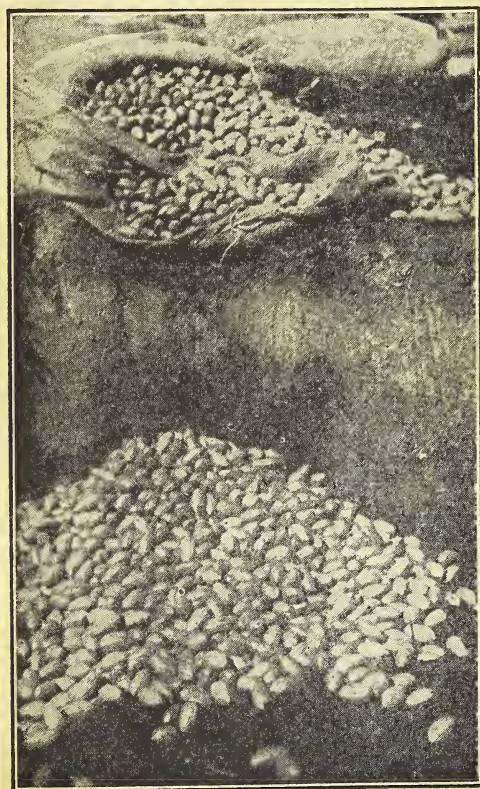
Nothing else will assure your children an education like the fine paper-shell pecan trees. There are thousands of pecan trees now clearing on an average of over \$50.00 per tree annually. One Success tree last season produced 267 pounds at 16 years old that sold for 60 cents per pound, or \$160.20. One of our trees produced 76 pounds the 9th year set out, and the 10th year 89 pounds, a total of 165 pounds, worth \$99.00 We practise what we preach and set out more pecan trees each year. Last year we set out 1,150 trees in one orchard and lost only 2 trees. Our orchards are not for sale. They are to educate our children and make a comfortable old age assured. Recently we had a letter from a man who said he was clearing from \$10,000.00 to \$12,000.00 per year from his 18 acre pecan grove. Our best advice is to plant you an orchard. You will never regret it.

Fine Pecan Land For Sale

We have several thousand acres of fine pecan land for sale on easy terms and in large or small tracts right here at Lumberton, which is just 90 miles from New Orleans and only 60 miles from the Gulf Coast. Fine schools, churches, gravel roads and excellent people throughout this section. Pecans, Satsuma oranges, peaches, apples, plums, grapes, figs, Japanese persimmons and all other kinds of fruit do well. In addition all kinds of farm and truck crops do fine here. Land can be bought at \$20.00 to \$50 00 per acre, depending on location, etc. Come and see the great opportunities here. We will gladly show you.

Adaptability and Soil

Pecan trees adapt themselves to and thrive on a wide range of soils: the alluvial soil of the river bottoms, the rolling red lands, the clay loams, the sandy pipe lands, the buckshot lands, the flat woods and the rolling lands of the more immediate coast regions seem equally adapted. I can't put pecan trees on seepy or crawfishy land. If you can't put your trees on land that would make a good crop of cotton or some other staple crop under the proper fertilization and cultivation, don't plant them. Land that is unfit for everything else is unfit for pecans. But you can grow pecans on poor land that is well drained by fertilizing them for three or four years; for after they once get a good start they send their roots down deep into the ground and feed on soil never reached by other plant roots.



Putting Our Fine Seed Pecans in the Ground to Sprout.

A Beautiful Picture

Consider what it means to own land! Something that can never be stolen, burnt, lost or taken from you or your heirs—land that will never need any great amount of care or cultivation. Then picture to yourself on this land a tree, which is one of Nature's hardiest offsprings; which lives and produces increasing crops every year for more than a century; which requires less and less attention as it grows older and more profitable. This is not open only to the rich, the average man or woman can grasp this opportunity. Take now—today—the step that means a life become to you and protects your dear ones from want.

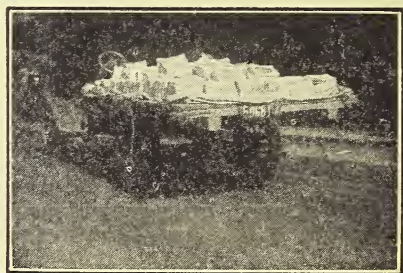
What Size Trees Should Be Planted?



**One of Our Early Bearing Pecans Bearing 214
Pecans the Third Year Set Out.**

from one to three years in their bearing and in ten or twelve years one crop of one or two of the years you have saved will pay the difference in many large and small pecan trees. We have some of our extra large trees set one year ago this spring that have more than forty pecans on them now. You can be sure that when you buy our big trees you will get a big fine root system and that the roots will be so well packed in damp moss that the trees will live and grow fast if properly put out.

It has been our experience that the larger size of pecan trees where well dug and packed can be safely transplanted all over the South. We have for several years specialized in large pecan trees and our customers report unusually good results in living, growing and early bearing trees. Of course, the large trees will bear earlier and will be more out of the way of the plow and of your stock. They will cost you more, but you will save



Mailing a Truck Load of Our Catalogues.



Note Our Fine Pecan Trees in the Nursery Row.

Distance for Planting

On lands of only fair fertility, plant sixty by sixty feet. . If on good hammock or a class of land that will produce good farm crops without the aid of fertilizer, we would plant seventy by seventy feet, and not less. Use the square system for planting your pecan trees. Anybody can lay them off on the square. This is the very best and most economical way of planting pecan trees.

Your Trees Pruned and Prepared for You

We endeavor to send out properly pruned trees, just as if we were going to plant them ourselves, leaving the planter nothing to do but to set them out. The taller grades of trees should be top-trimmed, as it balances the top against unavoidable loss of some roots when the tree is transplanted. Proper pruning insures the tree living and a good growth. Where trees are properly pruned, handled and planted, there is no reason why any of them should die. Our prices are made on the height of the trees when dug. When properly top-trimmed, the height is often materially reduced. Therefore, if the height of a trimmed tree, when received, is less than the catalog height, this is the explanation.

The Finest Small Fruits for the Southern Home

For years our thousands of customers throughout the South have been asking us where they could get a few fine peach, apple, plum, grape, fig, persimmon, pear, etc., for their home orchard. It was hard to tell them because often they were disappointed by the grower. To eliminate this trouble and assure our friends of the best that can be bought we have personally inspected some of the largest general nurseries and selected the following excellent stock. We know there is no better grown—you can get cheaper but not better. Note—when out of one variety we will substitute with what we think is just as good unless advised to the contrary. This eliminates delay, worry and trouble. We are offering these fruits not because we want to handle them but because of our desire to be of all the service possible to our good friends and customers. On large orders special prices will be cheerfully quoted.



Apples

APPLES

Red June—Fine for Home Use
Delicious—Very Popular and Fine

	Each	10
3 to 4 ft.-----	\$.30	\$2.50
4 to 6 ft.-----	.60	5.00



Peaches

PEACHES

Elberta—Finest Market Variety
Mayflower—Very Early and Profitable.

	Each	10
3 to 4 ft.-----	\$.30	\$2.50
4 to 6 ft.-----	.60	5.00



Red June Plums

PLUMS

Burbank—An Extra Good One
Red June—Finest of All.

	Each	10
3 to 4 ft.-----	\$.50	\$4.00
4 to 6 ft.-----	.65	6.00



Note the Heavy Bearing Branches of Our Wonderful Blight Proof Pineapple Sand Pears—A Remarkable New Pear.

No tree offers greater possibilities than the Blight Proof Pineapple Pear. This is one of the Sand Pears and is a wonderful fruit. The trees live easily, grow off very rapidly, come into bearing early and seem to be entirely Blight Proof. We know of lots of these old trees in this section that make from 45 to 75 bushels of pears annually. The trees grow well and bear fine without cultivation. In the yard, along the roadway, etc., they do fine and take up no valuable space. The greatest fault is their tendency to bear too heavily. You often have to prop up and brace the trees. Be sure to plant a few trees—our extra special size is the finest we ever saw. They are already beautifully headed up and will do wonders for you.

PRICES ON PEARS

Size	Each	Ten	300
3 to 4 Feet.....	\$.45	\$.40	\$.30
4 to 5 Feet.....	.55	.50	.40
5 to 6 Feet.....	.70	.60	.50
6 to 7 Feet.....	.90	.70	.60
Large Size.....	1.15	1.00	.75
Extra Special Size.....	1.50	1.25	1.00



Mother Bass Enjoying Our Satsuma Oranges. Over 750 on This Young Tree.

SATSUMA ORANGES

What could be prettier than seeing your mother at the ripe age of 70 enjoying over 750 beautiful yellow, ripe and luscious oranges on a 3-year-old tree? Just set out our fine trees and you will soon have trees loaded down with fine oranges. The Satsuma bears young, stands lots of cold, bears very heavily and is the finest eating orange in the world. They are easy to peel without getting them all over you. We have never had anything make as much clear profit for us, real pleasure and satisfaction as the Satsuma orange. Try them.

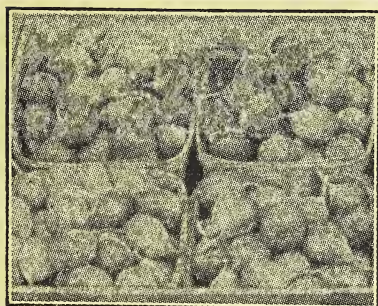
SATSUMA ORANGES

Size	Each	Ten	100
6 to 12 In..	\$.40	\$.30	\$.20
12 to 24 In..	.50	.40	.30
24 to 36 In..	.75	.60	.50



Our Fine Japanese Persimmons Loaded With Fine Fruit—Just 2 Years Old.

Fine Fruits Every Home Should Have



Celeste Fig—the Finest in the World.

FIGS

Celeste—Best of All for Home Use or Canning

Brown Turkey—A fine everbearing fig

	Each	10
3 to 4 ft.-----	\$.35	\$3.00
4 to 5 ft.-----	.50	4.50

JAPANESE PERSIMMONS

Tane-Nashi—Best of All

	Each	10
3 to 4 ft.-----	\$.50	\$4.50
4 to 5 ft.-----	.60	5.00

GRAPES

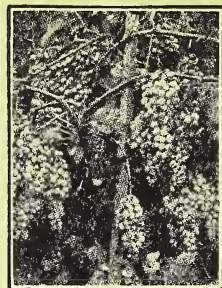
Concord—Best General Purpose Grape—Black—A rapid grower and fine bearer

Niagara—Rapid Grower, Fine Fruit—White

	Each	10
2 Year No. 1-----	\$.25	\$2.00

A Real Southern Home

Without figs, grapes, scuppernongs, Japanese persimmons, peaches, apples, plums, pears and Satsuma oranges no home is the home it could be with them. These fruits are easy to raise, take up little space, give lots of fine fresh fruits that are fine tonics for any system and the jellies and preserves, etc., cannot be excelled.



Our Grapes Cannot Be Excelled.

BASS PECAN COMPANY

LUMBERTON, MISS.

Largest Growers of Pecan Trees in the World

The Right Time to Set Papershell Pecan And Fruit Trees

The sooner the trees are set after the leaves shed in the Fall (about November 20th) and the trees become dormant, the better will be your prospects for them living, and the more vigorous will they grow off and naturally the earlier they will come into bearing. Don't wait to set your pecan and fruit trees but set them just as soon as you can, in November, December, January or February. Pecan trees live and do well set in all these months but the best time is when you are ready and can give the trees the best attention in setting them out. If you cannot set your trees early, at least book your order at once so you can have some of the finest trees reserved for you.

Rules for Setting Pecan and Fruit Trees Right

1. Never allow the roots of the trees to become dry or exposed to the atmosphere for any length of time from the time they reach you until they are set in the ground.

2. Wet the bundle just as soon as you can and if not ready to set out at once dig a hole and put roots in and cover up well. Place in a shady place if possible.

3. Set your trees at once upon arrival or heel-in promptly as above.

4. Have a large hole for your tree. Three feet square and three feet deep will not be too large for pecans. Holes about 12 inches wide and one to two feet deep will do for fruit trees. Use dynamite to blast the hole with if possible.

5. Set the tree about the same depth it stood in the nursery.

6. Fill in the hole with the best top soil, packing the dirt well around the roots, especially the tap root. Keep the roots of the trees out straight in their natural position and do not bend them down by the tree.

7. Mix thoroughly with the soil to be used to fill in the hole a peck or half bushel of well rotted manure or compost or some good guano, being very careful not to allow it to come into contact with the roots in ANY QUANTITY, for if it does it will scald them and do more harm than good.

8. If the soil is dry when the trees are set, it is a good idea to pour a bucketful of water to each tree when the hole is nearly filled and then fill the hole completely up.

9. Pour one bucketful of water to each tree once a week during very dry spells in Summer. Make a basin-like hole at the base of the tree. Pour water and as soon as it is soaked in good fill completely up with dry dirt. This holds in the moisture and also keeps the ground from baking.

Terms and Conditions of Sale

Terms are cash with order. We pay spot cash for everything and sell the same way. It saves us a lot of bookkeeping and annoyance and enables us to sell our high-grade bred-up trees cheaper.



Arranging to Dig Trees.

How to Send Money—Send money any way that is most convenient to you. We do not have to pay exchange on checks.

We Cannot Ship Trees by Mail—Except Small Fruits.

Our Shipping Facilities are exceptionally good. We are near the depots of two railroads and have open stations both day and night. Also have long distance telephone and telegraph service. You can get us over the telephone any time.

Our Trees Always Freshly Dug—We can dig and ship your trees any day.

Order Early—The demand for our high-grade bred-up trees far exceeds the supply, and it is very imperative that you send in your order early. Those who order early naturally receive the choicest stock.

Guarantee—We guarantee every tree sent out to be well grown, properly handled and packed and true to variety.

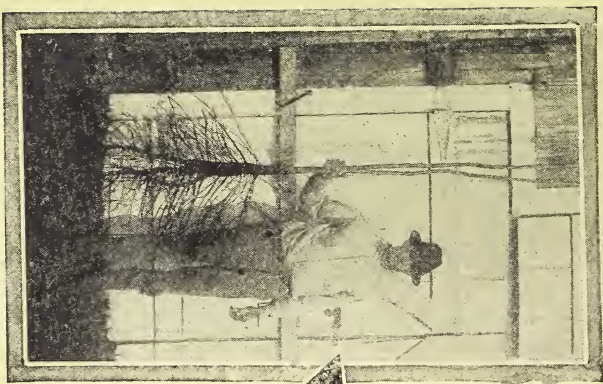
Mistakes—We take great interest in our work, and probably make as few mistakes as any one, yet we are not infallible, therefore stand ready to make good any mistakes that may occur as far as possible, or if any varieties ordered should accidentally not prove true to label, we will either replace the same free of charge or refund the purchase price, but are not liable for further damages.

Time of Shipment—Unless otherwise instructed, orders received during the shipping season will be forwarded as soon as possible after receipt of the order.

Substitution—If out of the varieties ordered we will send the ones we know to be the equal or superior unless instructed not to substitute.

No Charge for Packing or Drayage—We carefully pack and tag all trees free of charge.

Our Trees Free of Disease—A certificate of inspection of the Mississippi State Entomologist guaranteeing our trees to be free of disease accompanies each bundle of trees. All inspection laws of other States are complied with.



*This to this
in 18 Years*

