

(續) 年 金 種 類

第 四 表 (二ノ一)

(口) 据 置 終

年金種類及 支拂開始年齢別	前年度末現在契約			新 契 約			死 亡				
	件數	掛金額	年金額	件數	掛金額	年金額	件數	掛金額	年金額		
保 單 一 時 拂	五十歲	男	72,707	17,752,039.02	5,059,786.15	1,303	1,076,493.44	175,404.00	571	115,466.10	36,175.46
		女	61,365	20,702,351.30	4,738,833.60	1,322	1,392,299.28	182,625.00	373	92,105.68	21,580.83
	五十五歲	男	21,694	4,309,076.36	1,151,655.51	529	339,254.39	53,764.00	159	35,539.38	8,490.00
		女	17,573	4,517,721.78	917,567.87	511	379,060.02	47,531.00	110	18,562.02	3,945.28
	六十歲	男	16,325	2,077,693.40	648,755.93	329	226,782.53	36,644.00	164	40,640.96	8,505.00
		女	10,392	1,758,403.16	410,366.11	267	207,432.11	28,137.00	63	12,395.51	2,261.29
	六十五歲	男	26,459	836,963.61	493,796.47	213	56,993.83	14,569.00	207	10,789.72	4,635.00
		女	13,511	570,372.29	246,418.09	122	39,549.05	7,433.00	103	5,334.93	2,160.50
	計	男	137,195	24,945,772.39	7,353,994.06	2,374	1,699,524.19	280,381.00	1,101	202,436.16	57,805.46
		女	102,841	27,548,848.53	6,313,155.67	2,222	2,018,340.46	265,726.00	649	128,398.14	29,947.90
		計	240,036	52,494,620.92	13,667,149.73	4,596	3,717,864.65	546,107.00	1,750	330,834.30	87,753.36
	保 單 一 時 拂	五十歲	男	1,347	1,335,311.56	172,950.00	3,178	4,534,447.49	562,725.00	8	12,719.06
女			1,171	1,252,417.38	147,527.00	2,774	3,957,733.33	455,291.00	10	8,579.86	1,200.00
五十五歲		男	367	398,395.85	46,125.74	791	1,175,811.45	127,172.00	2	1,412.52	200.00
		女	298	305,311.31	31,256.19	683	894,354.60	90,137.00	4	3,211.09	266.00
六十歲		男	161	109,668.32	14,927.00	307	417,689.67	45,564.00	3	757.73	160.00
		女	129	122,774.05	13,071.00	212	254,260.05	26,846.00	—	—	—
六十五歲		男	67	38,684.64	5,122.00	107	130,268.10	14,353.00	—	—	—
		女	37	19,278.28	2,646.00	66	57,576.61	6,306.00	1	146.28	50.00
計		男	1,942	1,882,080.37	239,125.74	4,333	6,258,216.71	749,814.00	13	14,889.31	2,522.00
		女	1,635	1,699,781.02	194,510.19	3,735	5,163,924.59	578,580.00	15	11,937.23	1,516.00
		計	3,577	3,581,861.39	433,635.93	8,118	11,422,141.30	1,328,394.00	28	26,826.54	4,038.00
保 單 一 時 拂		五十歲	男	41,533	2,133,197.78	5,437,259.06	1,108	112,298.80	176,999.00	360	15,696.55
	女		27,044	1,774,277.98	3,542,376.60	875	109,438.68	140,477.00	164	8,702.24	19,341.94
	五十五歲	男	18,167	834,182.70	2,322,528.90	541	47,007.64	81,691.00	157	7,199.82	18,252.29
		女	11,709	682,830.92	1,441,404.09	399	47,241.32	62,359.00	89	7,222.88	10,975.48
	六十歲	男	11,469	396,005.15	1,399,711.33	259	21,420.32	41,771.00	114	4,434.19	12,746.38
		女	6,119	255,337.91	703,508.39	178	18,807.97	24,563.00	45	2,705.56	5,354.32
	六十五歲	男	14,288	178,425.27	1,429,638.19	238	11,408.15	35,035.00	138	2,992.02	14,681.55
		女	7,020	104,727.40	673,488.74	120	6,400.96	14,344.00	44	831.74	3,771.35
	計	男	85,457	3,541,811.90	10,589,137.48	2,146	192,134.91	335,496.00	760	30,322.58	90,633.35
		女	51,892	2,827,174.21	6,380,777.82	1,572	181,888.93	241,743.00	342	19,402.42	30,443.09
		計	137,349	6,368,986.11	16,949,915.30	3,718	374,023.84	577,239.00	1,111	49,785.00	130,076.44

別 類 統 全 計

身 年 金 (口)

昭和十五年度

解 約	法 定 解 除			其ノ他ノ事由=因ル増減			年 度 末 現 在 契 約					
	件數	掛金額	年金額	件數	掛金額	年金額	件數	掛金額	年金額			
201	75,743.72	13,797.00	—	—	—	—	40 [△]	100,289.47 [△]	13,442.85	73,198	18,537,033.17	5,171,774.84
200	88,147.96	13,193.00	—	—	—	—	64 [△]	141,087.14 [△]	16,209.94	62,050	21,773,309.80	4,870,444.83
63	12,170.39	2,405.00	—	—	—	—	4 [△]	7,540.29 [△]	1,703.31	21,997	4,593,080.69	1,192,821.20
42	14,034.85	2,107.00	—	—	—	—	8 [△]	13,556.71 [△]	1,738.69	17,924	4,850,626.22	957,307.90
44	17,569.28	3,356.00	—	—	—	—	14 [△]	16,801.16 [△]	2,910.53	16,432	2,229,464.53	670,628.40
33	3,042.41	812.00	—	—	—	—	8 [△]	10,729.41 [△]	1,270.40	10,555	1,939,667.94	434,159.42
80	2,845.48	1,690.77	—	—	—	—	4 [△]	9,982.62 [△]	2,122.11	26,391	840,339.62	499,917.59
37	2,609.26	862.00	—	—	—	—	2 [△]	1,501.65 [△]	165.47	13,491	600,475.50	250,663.12
388	108,328.87	21,248.77	—	—	—	—	62 [△]	134,613.54 [△]	20,178.80	138,018	26,199,918.01	7,535,142.03
312	107,834.48	16,974.00	—	—	—	—	82 [△]	166,876.91 [△]	19,384.50	104,020	29,164,079.46	6,512,575.27
700	216,163.35	38,222.77	—	—	—	—	144 [△]	301,490.45 [△]	39,563.30	242,038	55,363,997.47	14,047,717.30
18	16,792.54	2,140.00	—	—	—	—	1 [△]	16,595.76 [△]	1,903.00	4,500	5,823,651.69	729,470.00
19	12,621.90	1,314.00	—	—	—	—	6 [△]	26,395.00 [△]	3,068.34	3,910	5,162,553.95	597,235.66
2	987.51	250.00	—	—	—	—	1 [△]	4,415.45 [△]	496.02	1,153	1,567,391.82	172,352.72
1	268.45	30.00	—	—	—	—	2 [△]	2,079.98 [△]	162.00	974	1,194,106.39	120,945.19
1	136.06	30.00	—	—	—	—	3 [△]	1,704.28 [△]	250.00	461	524,759.92	60,051.00
2	743.94	130.00	—	—	—	—	1	595.48	50.00	340	376,885.64	39,837.00
3	701.56	230.00	—	—	—	—	—	—	—	171	1,082,251.18	19,245.00
2	269.06	60.00	—	—	—	—	—	—	—	100	76,439.55	8,842.00
24	18,617.67	2,650.00	—	—	—	—	3 [△]	22,715.49 [△]	2,649.02	6,285	8,084,054.61	981,118.72
24	13,903.35	1,534.00	—	—	—	—	7 [△]	27,879.50 [△]	3,180.34	5,324	6,809,985.53	786,859.85
48	32,521.02	4,184.00	—	—	—	—	10 [△]	50,594.99 [△]	5,829.36	11,609	14,894,040.14	1,747,978.57
471	21,145.11	55,037.62	330	17,128.85	41,710.00	—	37 [△]	29,075.78 [△]	38,138.11	41,443	2,162,450.29	5,434,419.20
276	17,001.12	33,381.84	196	15,671.08	25,282.00	—	45 [△]	31,812.07 [△]	33,235.87	27,238	1,810,530.15	3,571,611.95
228	8,529.52	26,897.65	189	8,865.15	24,703.51	—	7 [△]	10,842.79 [△]	17,574.06	18,127	845,753.06	2,316,792.39
138	7,487.93	15,642.48	113	5,905.62	13,990.00	—	8 [△]	16,097.67 [△]	14,455.25	11,760	693,358.14	1,448,699.88
168	3,882.91	17,114.33	134	3,909.44	16,423.00	—	9 [△]	10,581.04 [△]	14,761.12	11,321	394,617.89	1,380,440.50
77	1,982.78	6,419.40	66	2,710.78	7,940.00	—	6 [△]	2,965.05 [△]	4,462.17	6,115	273,781.71	703,895.50
317	1,707.08	28,412.35	230	2,848.32	27,092.19	—	14 [△]	3,482.96 [△]	15,411.93	13,855	178,804.04	1,379,075.17
163	1,188.66	12,295.08	142	2,271.22	16,950.00	—	13 [△]	2,653.07 [△]	7,640.37	6,804	104,183.67	647,175.94
1,184	35,264.62	127,461.95	883	32,751.76	109,925.70	—	21 [△]	53,982.57 [△]	85,885.22	84,746	3,581,625.28	10,510,727.26
654	27,660.49	67,738.80	517	26,558.70	64,162.00	—	34 [△]	53,527.86 [△]	59,793.66	51,917	2,881,853.67	6,371,383.27
1,838	62,925.11	195,200.75	1,400	59,310.46	174,087.70	—	55 [△]	107,510.43 [△]	145,678.88	136,663	6,463,478.95	16,882,110.53

(續) 年 金 種 類

第 四 表 (二ノ二)

(口) 据 置 終

年金種類及 支拂開始年齢別	前年度末現在契約			新 契 約			死 亡				
	件数	掛金額	年金額	件数	掛金額	年金額	件数	掛金額	年金額		
保 險 種 類 分 割 拂	五十歳	男	1,062	116,424.71	170,579.00	2,863	431,043.94	549,521.00	8	1,595.05	2,100.00
		女	706	95,944.94	118,672.00	2,016	329,377.41	382,181.00	8	558.90	1,060.00
	五十五歳	男	458	58,599.96	73,633.00	1,049	182,760.46	188,885.00	4	375.87	600.00
		女	304	39,814.64	42,297.00	774	130,817.72	128,432.00	5	582.74	500.00
	六十歳	男	165	17,622.67	22,190.00	433	80,724.51	73,097.00	7	701.61	720.00
		女	97	12,030.41	12,460.00	305	47,031.24	44,868.00	1	240.25	100.00
	六十五歳	男	79	5,145.35	9,248.00	147	21,637.27	21,780.00	1	76.06	100.00
		女	41	4,148.12	5,090.00	130	17,182.57	16,570.00	1	437.04	300.00
	計	男	1,764	197,792.69	275,650.00	4,462	716,166.18	833,284.00	20	2,748.59	3,520.00
		女	1,148	151,938.11	178,519.00	3,225	524,408.94	572,051.00	15	1,818.93	1,960.00
	計	計	2,912	349,730.80	454,169.00	7,687	1,240,575.12	1,405,335.00	35	4,567.52	5,480.00
	保 險 種 類 時 拂	五十歳	男	462	109,404.50	12,576.36	732	334,128.52	38,015.70	14	1,529.80
女			320	90,698.72	9,563.88	630	249,511.24	25,803.11	5	34.00	5.80
五十五歳		男	169	33,608.58	3,732.87	265	87,022.99	8,664.45	2	17.00	2.28
		女	106	25,040.97	2,348.93	199	66,653.05	6,020.28	5	416.02	54.89
六十歳		男	81	12,990.11	1,516.82	114	20,306.30	2,409.50	1	110.37	10.00
		女	56	9,440.78	952.03	78	22,385.57	2,169.65	1	57.35	5.00
六十五歳		男	51	6,216.92	773.07	65	9,409.07	1,015.83	1	18.00	1.72
		女	34	3,343.40	397.51	73	9,922.46	1,065.12	—	—	—
計		男	763	162,220.11	18,599.12	1,176	450,866.88	50,105.48	18	1,675.17	214.02
		女	516	123,523.87	13,262.35	980	348,482.32	35,058.16	11	507.37	65.69
計		計	1,279	290,743.98	31,861.47	2,156	799,349.20	85,163.64	29	2,182.54	279.71
年 金		五十歳	男	9,800	230,015.43	31,442.29	11,052	499,275.97	61,444.82	41	8,739.61
	女		1,404	19,654.15	2,755.08	2,339	78,535.68	9,675.90	8	79.70	14.55
	五十五歳	男	4,099	204,998.18	26,689.23	14,173	1,058,018.06	143,243.14	26	1,781.00	254.92
		女	408	11,400.24	1,627.44	603	45,673.37	5,223.06	2	37.00	6.41
	六十歳	男	246	30,178.71	2,793.30	2,385	319,082.74	39,200.33	7	1,738.00	155.90
		女	16	7,699.64	662.80	81	2,586.87	368.53	2	99.00	8.67
	六十五歳	男	156	10,037.70	1,507.72	282	86,824.26	8,463.61	3	10,204.34	942.64
		女	17	390.50	112.40	28	679.70	68.57	—	—	—
	計	男	14,301	475,230.02	62,432.54	27,892	1,963,201.03	252,351.90	77	22,462.95	2,140.10
		女	1,845	39,144.53	5,159.72	3,051	127,475.62	15,336.06	12	215.70	29.63
	計	計	16,146	514,374.55	67,592.26	30,943	2,090,676.65	267,687.96	89	22,678.65	2,169.73

備考 1. 新契約開中上段ノ数字ハ隨時拂契約ノ掛金第二回以後拂込ニ對スル掛金額及年金額ヲ示ス。
2. 死亡ノ計數ニハ保證期間内ニ年金受取人ノ死亡セルモノヲ含マス。

別 種 統 金 計

身 年 金

昭和十五年年度

解 約	法 定 解 除			其ノ他ノ事由ニ因ル増減			年 度 末 現 在 契 約				
	件数	掛金額	年金額	件数	掛金額	年金額	件数	掛金額	年金額		
49	5,258.88	6,800.00	120	9,023.44	15,827.00	5 ^A	7,478.73 ^A	8,924.22	3,743	524,112.55	685,448.78
41	5,627.72	7,980.00	54	4,264.49	6,900.00	1 ^A	17,546.96 ^A	11,155.02	2,620	397,324.28	473,755.98
17	2,383.41	3,018.67	37	5,204.96	5,740.00	—	2,112.30 ^A	1,189.34	1,449	231,283.88	251,970.99
5	255.79	520.00	20	2,370.64	2,640.00	2 ^A	2,491.56 ^A	1,234.16	1,046	164,931.63	165,834.84
5	519.51	1,000.00	16	749.36	1,860.00	2 ^A	1,517.06 ^A	1,016.61	538	94,859.64	90,690.39
4	710.69	460.00	12	641.21	1,240.00	1 ^A	1,877.32 ^A	732.73	384	55,592.18	54,795.27
7	111.22	700.00	19	1,164.63	2,720.00	—	—	19.73	199	25,430.71	27,527.73
4	500.60	400.00	7	358.57	700.00	—	1,252.29 ^A	644.30	159	18,782.19	19,615.70
78	8,273.02	11,518.67	192	16,142.39	26,147.00	7 ^A	11,108.09 ^A	11,110.44	5,929	875,686.78	1,056,637.89
54	7,094.80	9,360.00	93	7,634.91	11,480.00	2 ^A	23,168.13 ^A	13,767.21	4,209	633,630.28	714,002.79
132	15,367.82	20,878.67	285	23,777.30	37,627.00	9 ^A	34,276.22 ^A	24,877.65	10,138	1,512,317.06	1,770,640.68
67	2,531.92	328.73	—	—	—	1,376	20,411.38	3,439.38	2,489	649,253.47	75,312.47
29	1,650.27	245.61	—	—	—	290 ^A	61.69	588.62	1,206	461,653.41	47,512.46
26	1,253.37	154.89	—	—	—	319	9,787.31	1,751.23	725	203,206.94	22,044.38
6	875.94	109.17	—	—	—	53	10,532.41	1,141.52	347	154,765.71	14,074.69
3	2,322.40	224.56	—	—	—	19	2,514.63	275.85	210	42,687.30	5,076.07
—	—	—	—	—	—	2	6.00	.52	135	43,427.93	4,221.08
1	29.86	5.00	—	—	—	7	72.50	18.76	121	25,903.95	2,844.32
3	900.79	78.00	—	—	—	1 ^A	502.98 ^A	46.73	103	13,998.88	1,558.66
97	6,137.55	713.18	—	—	—	1,721	32,885.82	5,485.23	3,545	923,051.66	105,277.24
33	3,427.00	432.78	—	—	—	344	9,973.74	1,683.93	1,791	673,845.93	67,366.89
135	9,564.55	1,145.96	—	—	—	2,065	42,859.56	7,169.16	5,336	1,595,897.59	172,644.13
255	4,925.30	781.31	—	—	—	1,373 ^A	19,345.66 ^A	3,325.54	19,183	1,053,326.72	137,642.85
37	416.50	69.41	—	—	—	294 ^A	7,635.63 ^A	1,214.79	3,404	129,287.15	16,512.89
134	5,855.03	839.34	—	—	—	325 ^A	12,821.72 ^A	1,998.42	17,787	1,741,000.36	232,198.35
50	1,001.30	210.33	—	—	—	52 ^A	10,484.78 ^A	1,134.44	907	61,967.01	7,833.11
14	1,072.03	93.40	—	—	—	19 ^A	2,180.00 ^A	243.43	2,591	440,172.69	51,793.49
—	—	—	—	—	—	2 ^A	6.00 ^A	.52	93	11,558.31	1,179.68
13	504.70	100.82	—	—	—	8 ^A	1,894.50 ^A	174.08	414	109,082.23	11,412.12
1	18.90	8.84	—	—	—	1 ^A	3.00 ^A	.31	43	1,383.42	244.91
416	12,368.06	1,814.87	—	—	—	1,725 ^A	36,241.91 ^A	5,741.47	39,975	3,343,581.00	433,046.81
88	1,436.70	288.58	—	—	—	349 ^A	18,129.41 ^A	2,350.06	4,447	204,195.89	25,770.59
504	13,804.76	2,103.45	—	—	—	2,074 ^A	54,371.32 ^A	8,091.53	44,422	3,547,776.89	458,817.40

(續) 年 金 種 類

第 四 表 (三)

(八) 定 期

年金種類及 支拂開始年齡別	前年度末現在契約			新 契 約			死 亡			
	件數	掛金額		件數	掛金額		件數	掛金額		
		年金額	年金額		年金額	年金額		年金額	年金額	
五 年 定 期	十二歲 男女	2,213	992,495.10	270,891.79	4,819	2,483,736.80	674,259.00	29	14,319.89	4,080.00
		1,785	801,656.14	218,796.85	3,620	1,857,552.05	507,962.00	25	10,475.62	2,940.00
	十五歲 男女	2,669	1,156,539.77	333,339.18	6,108	2,916,262.28	844,544.00	33	12,565.46	4,070.00
		1,772	755,514.97	217,812.86	4,179	2,002,309.33	580,489.00	21	7,527.20	2,340.00
	十七歲 男女	1,648	912,751.77	271,220.00	3,391	2,349,423.00	689,202.00	17	9,132.75	2,950.00
		1,030	465,779.04	139,523.00	2,061	1,091,487.92	324,247.00	9	3,220.06	1,000.00
	二十歲 男女	1,501	872,492.37	271,466.00	3,044	2,172,930.51	669,390.00	13	8,247.71	2,760.00
		666	274,327.18	85,146.00	1,376	655,423.41	203,658.00	6	3,727.04	1,100.00
	合計	8,081	3,934,279.01	1,146,916.97	17,362	9,922,352.59	2,877,395.00	92	44,265.81	13,860.00
	合計	5,253	2,298,277.33	662,278.71	11,226	5,616,772.71	1,616,356.00	61	24,949.92	7,380.00
合計	13,284	6,232,556.34	1,809,195.68	28,588	15,539,125.30	4,493,751.00	153	69,215.73	21,240.00	
十 年 定 期	十二歲 男女	283	348,205.47	53,400.00	603	793,785.27	119,572.00	6	6,146.37	1,000.00
		178	202,299.80	30,790.00	340	419,782.00	65,320.00	4	2,425.50	400.00
	十五歲 男女	401	497,195.10	79,763.00	743	1,115,974.10	177,185.00	1	512.78	100.00
		138	147,352.82	22,570.00	245	341,670.62	52,170.00	1	1,012.12	130.00
	十七歲 男女	242	411,326.79	67,566.00	458	937,767.11	151,449.00	2	3,253.73	500.00
		70	111,909.08	18,040.00	131	217,381.07	34,520.00	—	—	—
	二十歲 男女	264	331,990.07	55,289.00	474	727,279.82	120,910.00	1	471.26	100.00
		194	184,285.56	31,008.00	376	455,370.72	75,302.00	—	—	—
	合計	1,190	1,588,717.43	256,018.00	2,278	3,574,806.30	569,116.00	10	10,394.14	1,700.00
	合計	580	645,848.26	102,408.00	1,092	1,434,904.41	227,312.00	5	3,437.62	530.00
合計	1,770	2,234,565.69	358,426.00	3,370	5,009,010.71	796,428.00	15	13,831.76	2,230.00	
五 年 定 期	十二歲 男女	5,709	379,707.18	687,036.07	10,108	756,246.30	1,301,587.62	95	6,287.30	12,465.66
		4,867	317,987.79	584,471.38	8,197	615,285.77	1,060,825.46	80	4,825.93	9,456.99
	十五歲 男女	9,354	505,005.60	1,146,140.21	18,114	1,047,453.93	2,285,803.52	154	7,065.66	18,607.23
		6,605	353,808.18	805,012.77	12,470	717,574.39	1,561,596.23	98	4,448.29	11,426.89
	十七歲 男女	4,929	321,338.42	745,413.69	7,009	526,972.92	1,114,516.16	49	3,048.67	7,677.38
		3,125	168,640.11	400,128.44	4,644	284,101.38	622,251.40	41	2,055.57	5,577.32
	二十歲 男女	3,282	202,758.54	524,626.41	4,979	373,673.75	851,880.10	33	1,433.48	4,429.07
		1,745	83,545.60	214,758.17	2,772	155,826.31	358,310.67	19	864.57	2,361.16
	合計	23,274	1,408,809.74	3,104,216.38	40,210	2,704,346.90	5,553,787.40	331	17,835.11	43,179.34
	合計	16,342	923,981.68	2,004,370.76	28,083	1,772,788.85	3,602,984.76	238	12,194.86	28,822.36
合計	39,616	2,332,791.42	5,108,587.14	68,293	4,477,135.75	9,156,772.16	569	30,029.47	72,001.70	
十 年 定 期	十二歲 男女	352	50,129.44	48,083.06	642	125,542.46	104,202.49	6	972.29	1,020.77
		226	36,415.72	33,484.17	389	78,755.18	63,290.51	4	409.44	505.12
	十五歲 男女	574	75,348.35	87,486.14	887	163,322.79	160,264.06	6	850.78	771.11
		194	25,308.36	27,174.73	292	48,948.96	45,507.90	—	—	—
	十七歲 男女	331	48,811.63	60,533.99	458	108,657.41	110,097.73	1	659.22	600.00
		101	10,190.15	12,127.38	145	21,968.39	19,709.30	—	—	—
	二十歲 男女	263	27,597.59	39,835.40	312	48,703.54	56,474.39	4	182.14	501.88
		173	18,894.56	28,725.68	228	33,721.02	38,088.23	1	68.57	119.29
	合計	1,520	201,887.01	235,938.59	2,299	446,226.20	431,088.67	17	2,664.43	2,893.76
	合計	694	91,808.79	101,511.96	1,054	183,393.55	166,595.94	5	478.01	624.41
合計	2,214	293,695.80	337,450.55	3,353	629,619.75	597,634.61	22	3,142.44	3,518.17	

別 金 種 類 統 計

年 金

昭和十五年度

解 約	法 定 解 除			其/他/事由=因/増減			年 度 末 現 在 契 約					
	件數	掛金額		件數	掛金額		件數	掛金額				
		年金額	年金額		年金額	年金額		年金額	年金額			
8	4,219.43	1,127.00		—	—		2 [△]	747.10 [△] 198.24		6,993	3,456,945.48 939,752.55	
		650.00			—			414.68 120.00			5,377 2,656,842.28 723,288.85	
10	4,659.96	1,380.00		—	—		1	1,554.68 500.00		8,735	4,057,131.31 1,172,933.18	
		740.00			—			2,120.23 639.45			5,925 2,750,749.68 795,851.31	
1	1,061.10	300.00		—	—		5	8,854.22 2,664.42		5,025	3,260,835.14 959,836.42	
		300.00			—			3,094.30 [△] 796.00			3,067 1,549,889.52 461,674.00	
8	4,159.63	1,320.00		—	—		1 [△]	1,315.90 [△] 444.86		4,523	3,031,699.64 936,331.14	
		200.00			—			559.11 [△] 200.00			2,035 924,808.75 288,304.00	
27	14,100.12	4,120.00		—	—		3	8,345.90 2,521.32		25,277	13,806,611.57 4,008,853.29	
		1,890.00			—			1,118.50 [△] 236.55			16,404 7,882,290.23 2,289,128.16	
42	20,791.51	6,010.00		—	—		4	7,227.40 2,284.77		41,681	21,688,501.80 6,277,981.45	
		—			—			—			—	
1	1,394.50	200.00		—	—		1	671.63 100.00		880	1,135,121.50 171,872.00	
		150.00			—			3,289.22 [△] 450.00			511 615,239.76 95,110.00	
—	—	—		—	—		1	790.92 [△] 11.17		1,144	1,613,447.34 256,836.83	
		—			—			—			382 488,011.32 74,610.00	
3	1,861.90	300.00		—	—		—	—		695	1,343,968.27 218,215.00	
		100.00			—			2,340.69 364.29			201 331,012.38 52,824.29	
1	549.72	100.00		—	—		1 [△]	3,673.00 [△] 800.00		735	1,054,575.91 175,199.00	
		—			—			1,252.29 300.00			570 640,919.57 106,610.00	
5	3,806.12	600.00		—	—		1 [△]	2,210.45 [△] 711.17		3,454	5,147,113.02 822,122.83	
		250.00			—			313.76 214.29			1,664 2,075,183.03 329,154.29	
7	5,551.90	850.00		—	—		—	1,896.69 [△] 496.88		5,118	7,222,296.05 1,151,277.12	
		—			—			—			—	
71	4,658.10	8,667.96		175	11,178.01 20,859.29		—	6,488.28 [△] 6,305.80		15,476	1,107,341.79 1,940,324.98	
		7,849.25			131 8,384.11 15,612.20			3 [△] 3,925.48 [△] 4,425.08			12,801 911,323.02 1,607,953.32	
89	5,141.88	12,256.59		259	14,081.01 32,095.22		6 [△]	2,361.25 [△] 3,677.36		26,953	1,523,809.73 3,365,307.33	
		8,762.79			170 9,396.03 21,058.76			—			18,742 1,050,517.92 2,322,181.73	
46	3,962.30	8,128.71		101	5,857.76 14,776.61		1 [△]	1,855.85 [△] 3,225.78		11,743	833,576.76 1,827,121.37	
		2,793.89			78 4,458.00 10,743.27			—			7,629 443,712.52 1,001,856.80	
39	4,440.80	8,810.53		110	5,632.83 14,490.00		1 [△]	1,208.51 [△] 1,441.00		8,080	563,716.67 1,347,335.91	
		3,857.62			59 2,580.83 7,282.81			2 [△] 2,234.12 [△] 2,103.09			4,413 232,003.00 557,454.16	
242	18,208.08	37,863.79		655	33,759.61 82,221.12		4 [△]	11,913.89 [△] 14,649.94		62,252	4,028,444.95 8,480,089.59	
		23,273.55			438 24,818.97 54,697.04			1 [△] 10,337.04 [△] 11,106.56			43,585 2,637,556.46 5,489,456.01	
405	30,036.78	61,137.34		1,093	61,578.58 136,918.16		5 [△]	22,280.93 [△] 25,756.50		105,837	6,666,001.41 13,969,545.60	
		—			—			—			—	
3	599.46	504.88		7	562.64 730.82		1 [△]	1,477.79 [△] 906.98		977	172,059.72 149,122.10	
		1,013.39			3 291.98 307.87			3 [△] 350.53 [△] 305.18			600 113,329.81 94,643.12	
6	641.15	805.48		15	1,538.93 2,177.90		—	1,512.91 [△] 950.32		1,434	234,127.37 243,045.39	
		349.49			5 831.93 744.19			—			479 72,753.28 70,795.73	
1	68.57	107.14		8	667.70 824.53		2 [△]	190.18 [△] 327.37		777	155,883.37 168,772.68	
		266.02			1 62.85 109.23			—			243 31,924.28 31,461.43	
5	430.19	1,072.52		5	396.54 552.15		4 [△]	1,102.86 [△] 845.78		557	74,189.40 93,337.46	
		462.24			7 387.16 712.51			—			391 52,011.58 65,519.87	
15	1,739.37	2,490.02		35	3,165.81 4,285.40		7 [△]	4,283.74 [△] 3,080.45		3,745	638,259.86 654,27	

第五表

分割掛金

Table with columns: 年金種類, 支拂開始年齢, 及掛込期間別, 前年度末現在契約, 新契約, 死亡, 年金額. Includes sub-sections for 定期掛金 and 終身掛金.

込期間別統計

昭和十五年度

Table with columns: 解約, 法定解除, 其/他ノ事由=因ル増減, 年度末現在契約. Includes sub-sections for 定期掛金 and 終身掛金.

地 方 別 別 別

第 六 表 (一)

地方別及年金種類別	前年度末現在契約			新 契 約			死 亡			
	件數	掛金額	年金額	件數	掛金額	年金額	件數	掛金額	年金額	
		円	円		円	円		円	円	
東京	終身年金	40,678	21,555,807.44	4,757,020.34	6,820	9,988,507.91	1,357,838.91	444	271,365.10	48,735.31
	團體年金	1,439	33,308.86	4,908.53	12,067	662,985.45	90,035.33	15	3,141.58	302.56
	定期年金	13,248	2,155,670.60	1,764,873.70	22,325	4,693,901.04	3,252,335.50	145	16,468.94	18,347.80
	計	55,365	23,744,786.90	6,526,802.57	41,212	15,345,394.40	4,710,209.74	604	290,975.62	67,385.67
東京都	終身年金	10,478	4,005,430.45	1,011,926.27	1,189	1,503,861.15	197,330.15	111	34,505.44	8,388.00
	團體年金	286	29,704.10	3,603.33	588	86,207.47	11,290.13	5	1,172.00	139.90
	定期年金	3,249	464,481.14	411,998.53	5,318	870,203.17	689,756.99	64	7,271.31	8,544.29
	計	14,013	4,499,615.69	1,427,528.13	7,095	2,460,271.79	898,377.27	180	42,948.75	17,072.19
神奈川	終身年金	51,156	25,561,237.89	5,768,946.61	8,009	11,492,369.06	1,655,169.06	555	305,870.54	57,123.31
	團體年金	1,725	63,012.96	8,511.86	12,655	749,192.92	101,325.46	20	4,313.58	442.46
	定期年金	16,497	2,620,151.74	2,176,872.23	27,648	5,564,104.21	3,952,092.49	209	23,740.25	26,892.09
	計	69,378	28,244,402.59	7,954,330.70	48,307	17,805,666.19	5,608,567.01	784	333,924.37	84,457.86
新潟	終身年金	14,107	2,631,596.50	914,604.37	1,099	847,709.43	107,038.35	167	62,137.36	10,451.98
	團體年金	388	1,927.60	294.01	329	35,581.33	4,813.34	2	89.00	4.72
	定期年金	1,686	237,355.10	197,085.91	3,747	496,761.32	442,702.62	37	4,170.70	3,882.08
	計	16,181	2,870,879.20	1,111,984.29	5,175	1,380,052.08	554,554.31	206	66,397.06	14,338.78
埼玉	終身年金	8,117	2,256,301.24	613,587.88	893	903,336.82	107,978.10	67	28,080.67	4,202.00
	團體年金	63	328.00	43.34	284	4,444.00	467.41	—	—	—
	定期年金	2,028	303,953.00	266,428.05	3,447	564,984.31	432,856.43	43	3,418.59	4,741.55
	計	10,208	2,530,582.24	880,059.27	4,624	1,472,765.13	541,301.94	110	31,499.26	8,943.55
群馬	終身年金	6,501	1,665,227.95	534,409.62	671	559,438.50	88,340.27	53	24,638.71	4,506.97
	團體年金	286	3,856.50	579.82	275	6,826.10	774.57	2	68.00	13.98
	定期年金	1,383	203,610.17	172,917.81	2,449	324,912.23	299,807.99	17	1,208.59	1,951.60
	計	8,170	1,872,694.62	707,907.25	3,395	891,176.83	388,922.83	72	25,915.30	6,472.55
千葉	終身年金	7,160	1,755,149.96	575,699.04	694	582,107.77	88,477.68	54	20,206.51	5,175.52
	團體年金	76	237.50	38.45	241	802.40	120.92	1	3.00	.70
	定期年金	1,393	164,248.59	170,321.95	2,811	365,834.22	350,204.21	13	1,658.22	1,598.22
	計	8,629	1,919,636.05	746,059.44	3,746	948,744.39	438,802.81	68	21,867.73	6,774.44

限 統 式 計

昭和十五年年度

解 約	法定解除			其ノ他ノ事由ニ因ル増減			年度末現在契約				
	件數	掛金額	年金額	件數	掛金額	年金額	件數	掛金額	年金額		
		円	円		円	円		円	円		
378	64,369.80	38,486.48	228	12,881.97	30,101.19	223 ^A	19,023.04 ^A	36,932.48	46,671	31,277,082.87	5,971,222.25
63	3,177.60	408.12	—	—	—	229 ^A	4,274.60 ^A	794.00	13,199	824,752.66	112,291.27
102	14,220.41	16,655.13	215	12,302.82	26,574.41	4	1,878.11 ^A	3,583.45	35,107	6,808,457.58	4,962,048.41
543	81,767.81	55,549.73	443	25,184.79	56,675.60	10 ^A	21,419.53 ^A	41,809.98	94,977	38,910,293.11	11,045,561.93
71	7,211.73	7,969.01	35	1,852.40	4,140.00	21	429.91 ^A	3,707.35	11,471	5,483,254.89	1,186,978.76
2	17.00	3.28	—	—	—	21 ^A	1,050.50 ^A	137.43	846	141,621.58	18,175.77
20	2,222.94	2,840.98	66	3,915.04	7,667.13	— ^A	179.09 ^A	154.30	8,417	1,321,095.93	1,082,548.82
93	9,451.67	10,813.27	101	5,777.44	11,807.13	— ^A	799.68 ^A	3,999.08	20,734	6,945,972.40	2,287,703.35
449	71,581.53	46,455.49	263	14,744.37	34,241.19	244 ^A	18,593.13 ^A	40,639.83	58,142	36,760,387.76	7,158,201.01
65	3,194.60	411.40	—	—	—	250 ^A	5,825.10 ^A	931.43	14,045	966,874.24	130,467.04
122	16,443.35	19,496.11	281	16,217.86	34,241.54	4	1,699.02 ^A	3,737.75	43,524	8,129,553.51	6,044,597.23
636	91,219.48	66,363.00	544	30,962.23	68,482.73	10 ^A	22,219.21 ^A	45,309.01	115,711	45,856,265.51	13,333,265.28
90	4,517.72	6,664.87	27	739.35	3,148.00	21 ^A	2,380.88 ^A	3,768.79	14,943	3,415,595.83	998,273.09
2	67.50	8.90	—	—	—	24 ^A	342.50 ^A	54.54	689	42,571.63	5,821.47
20	1,798.63	2,418.66	24	1,085.05	2,739.73	— ^A	74.29 ^A	201.38	5,352	726,987.75	630,546.68
112	6,383.85	9,092.43	51	1,824.40	5,887.73	3 ^A	2,797.67 ^A	4,024.71	20,984	4,185,155.21	1,634,641.24
29	3,555.12	3,188.56	14	446.70	1,580.00	3 ^A	1,734.30 ^A	2,665.12	8,903	3,127,973.34	710,291.85
—	—	—	—	—	—	3	15.53	.63	344	7,406.30	841.69
8	625.08	1,359.71	22	1,000.72	2,560.24	— ^A	189.00 ^A	508.77	5,402	863,703.92	690,114.21
37	4,180.20	4,548.27	36	1,447.42	4,140.24	— ^A	1,907.77 ^A	3,173.26	14,649	3,999,083.56	1,401,247.75
45	4,209.14	3,657.33	34	1,147.32	3,740.00	40 ^A	222.05 ^A	1,242.65	7,080	2,195,239.03	609,687.74
1	17.50	2.17	—	—	—	39 ^A	554.50 ^A	94.68	519	21,081.00	2,793.18
5	194.17	561.33	30	1,459.41	3,182.94	— ^A	141.42 ^A	135.64	3,780	525,518.81	466,894.29
51	4,420.81	4,220.88	64	2,606.73	6,922.94	1 ^A	917.97 ^A	1,472.97	11,379	2,741,838.84	1,079,375.21
49	5,768.38	4,393.41	34	1,893.81	4,505.00	11 ^A	1,108.42 ^A	1,491.08	7,728	2,309,278.05	648,736.73
—	—	—	—	—	—	11 ^A	65.50 ^A	13.41	305	2,287.10	360.03
4	814.74	1,099.19	20	997.82	2,444.76	—	44.77 ^A	101.43	4,167	526,656.80	515,282.56
53	6,533.12	5,492.60	54	2,891.68	6,949.76	— ^A	1,129.15 ^A	1,605.92	12,200	2,838,221.95	1,164,379.32

(續) 地 方 別

第 六 表 (二)

地方別及年金種類別	前年度末現在契約			新 契 約			死 亡					
	件數	掛金額	年金額	件數	掛金額	年金額	件數	掛金額	年金額			
東 京	茨 城	終身年金	7,383	1,441,440.07	523,418.48	662	1,475.00 496,505.47 (11) 130.00	73,960.20	49	11,906.45	3,149.00	
		團體年金	27	132.00	25.60	124	396.70	75.89	—	—	—	
		定期年金	1,093	149,991.03	139,862.65	2,519	326,170.66 1,334.00	299,543.91	218.12	14	1,444.77	1,954.64
		計	8,503	1,591,563.10	663,306.73	3,305	823,072.83	873,580.00	218.12	63	13,851.22	5,103.64
地 橋 木	計	終身年金	6,481	1,568,800.95	507,005.14	649	1,298.59 429,010.17 (18) 8,701.80	67,674.98	81	18,245.28	4,488.51	
		團體年金	92	1,380.60	188.99	315	1,540.60	240.50	—	—	—	
		定期年金	1,457	181,617.69	170,625.21	2,560	438,993.79 7,983.59	309,599.90	1,144.71	27	3,470.48	3,231.48
		計	8,030	1,751,799.24	677,819.34	3,524	869,544.56	377,515.38	1,144.71	108	21,715.76	7,719.99
方 野 岡	計	終身年金	13,682	3,452,098.12	1,006,809.33	979	4,323.67 863,885.54 (21) 24,067.50	117,749.43	125	33,892.93	8,884.60	
		團體年金	518	9,320.10	1,282.88	386	2,542.00	361.23	—	—	—	
		定期年金	2,152	299,034.31	263,651.46	4,268	684,311.27 28,367.17	544,008.83	3,893.56	25	1,954.30	2,905.09
		計	16,352	3,760,452.53	1,271,743.67	5,633	1,550,738.81	662,119.49	3,893.56	150	35,847.23	11,789.69
信 山 梨	計	終身年金	3,175	650,785.31	212,445.58	277	532.27 287,587.20 (9) 1,532.00	31,317.98	25	10,641.57	1,747.78	
		團體年金	72	216.00	39.96	109	327.00	44.11	—	—	—	
		定期年金	499	82,106.85	60,225.11	1,030	177,074.84 1,894.27	132,823.72	282.61	5	210.88	623.07
		計	3,746	733,108.16	272,710.65	1,416	464,989.04	164,185.81	282.61	30	10,852.45	2,370.85
合 計	計	終身年金	66,606	15,421,400.10	4,887,979.44	5,924	17,408.45 4,969,580.90 (135) 32,994.67	682,536.99	621	209,749.48	42,606.36	
		團體年金	1,522	17,398.30	2,498.05	2,063	52,460.13	6,897.97	5	160.00	19.40	
		定期年金	11,691	1,621,916.74	1,441,118.15	22,831	3,379,042.64 70,435.12	2,811,547.61	9,541.45	181	17,536.53	20,887.73
		計	79,819	17,060,715.14	6,331,590.64	30,818	8,401,083.67	3,500,982.57	9,541.45	807	227,446.01	63,513.49
名 古 屋	愛 知	終身年金	23,082	7,674,551.80	1,900,802.34	1,906	11,829.85 2,156,413.38 (174) 129,370.74	254,529.54	292	112,650.32	20,185.27	
		團體年金	2,748	81,408.54	11,319.81	3,981	178,473.58	22,004.13	15	192.90	29.55	
		定期年金	2,099	441,073.96	267,262.27	4,638	1,338,059.64 138,200.38	653,773.07	20,088.80	31	5,998.67	3,557.38
		計	27,929	8,197,034.30	2,179,384.42	10,525	3,672,946.60	930,306.74	338	118,841.89	23,772.20	
信 岐 卓	計	終身年金	13,737	2,590,810.14	828,394.47	724	1,988.05 492,140.46 (82) 5,728.13	63,245.60	131	34,049.32	7,398.36	
		團體年金	429	4,242.17	530.92	686	19,029.36	2,319.60	1	9.00	.92	
		定期年金	733	150,078.13	87,664.08	1,503	423,256.02 7,727.18	185,727.90	883.18	12	2,612.75	1,545.14
		計	14,899	2,745,130.44	916,589.47	2,913	934,425.84	251,293.10	883.18	144	36,671.07	8,944.42
信 岐 卓	計	終身年金	11,855	2,760,514.71	757,959.31	740	2,778.72 600,439.68 (28) 15,609.75	76,345.23	118	40,265.16	6,700.95	
		團體年金	1,076	8,878.28	1,479.57	1,081	45,074.18	6,368.81	3	42.00	8.55	
		定期年金	662	140,352.56	80,499.09	1,326	420,301.22 18,336.47	180,733.17	2,944.23	6	3,744.92	1,300.00
		計	13,593	2,909,745.55	839,937.97	3,147	1,065,815.08	263,447.21	2,944.23	127	44,052.08	8,009.50

限 統 式 計

昭和十五年度

解 約	法 定 解 除			其ノ他ノ事由=因リ増減			年 度 末 現 在 契 約				
	件數	掛金額	年金額	件數	掛金額	年金額	件數	掛金額	年金額		
55	5,938.96	4,552.19	32	1,422.31	3,900.00	6 ^A	1,757.36 ^A	2,197.64	7,915	1,918,395.46	583,766.24
—	—	—	—	—	—	9 ^A	54.00 ^A	10.77	(13) 142	633.70	122.51
14	1,706.61	1,916.43	15	601.73	1,609.40	— ^A	299.98	70.67	3,569	472,108.60	433,996.76
69	7,645.57	6,468.62	47	2,024.04	5,509.40	3 ^A	2,111.34 ^A	2,137.74	11,626	2,391,137.76	1,017,885.51
21	1,008.44	2,125.90	26	1,311.54	3,220.00	25 ^A	399.91 ^A	1,681.82	7,027	1,978,112.94	563,337.47
—	—	—	—	—	—	25 ^A	335.80 ^A	63.04	(23) 382	9,287.00	1,337.58
7	760.76	1,340.97	14	536.69	1,496.45	—	166.92	—	3,969	616,010.47	474,156.21
28	1,769.20	2,466.87	40	1,848.28	4,718.45	— ^A	568.79 ^A	1,744.86	11,378	2,608,410.41	1,038,831.26
69	5,978.06	6,317.67	13	562.33	1,400.00	64	1,177.22 ^A	861.90	14,518	4,281,057.23	1,107,589.80
3	121.00	16.76	—	—	—	65 ^A	2,091.50 ^A	315.95	(14) 836	33,717.10	4,619.78
17	1,381.14	2,198.71	30	1,573.21	4,267.31	— ^A	25.40 ^A	55.81	6,348	978,411.53	798,233.37
89	7,480.20	8,533.14	43	2,135.54	5,667.31	1 ^A	989.68 ^A	1,233.66	21,702	5,293,185.86	1,910,442.95
26	2,391.98	1,433.01	29	691.92	3,340.00	4 ^A	130.09 ^A	1,075.35	3,376	924,849.22	236,207.76
15	141.00	23.84	—	—	—	4 ^A	15.00 ^A	2.00	(7) 162	1,919.00	280.50
4	155.41	433.53	7	254.81	758.74	—	—	—	1,513	258,560.59	191,233.49
45	2,688.89	1,890.38	36	946.73	4,098.74	— ^A	145.09 ^A	1,077.35	5,051	1,185,328.81	427,721.75
384	33,367.80	32,932.94	209	8,215.28	24,883.00	174 ^A	6,555.79 ^A	14,984.55	71,490	20,150,501.10	5,457,890.68
21	347.00	51.67	—	—	—	180 ^A	3,443.27 ^A	553.76	(22) 3,379	118,902.83	16,176.74
79	7,436.54	11,328.53	162	7,509.44	19,059.57	— ^A	518.40 ^A	932.36	34,100	4,967,958.47	4,200,457.57
484	41,151.34	43,713.14	371	15,724.72	43,892.57	6 ^A	10,517.46 ^A	16,470.47	108,969	25,237,362.40	9,674,524.99
117	6,805.77	7,890.43	20	1,046.80	2,910.00	916	15,284.38 ^A	4,605.89	25,475	9,737,576.32	2,120,935.69
42	1,105.60	208.51	—	—	—	593 ^A	7,404.94 ^A	1,205.42	(28) 6,079	377,549.42	50,773.86
20	1,396.00	2,120.15	24	1,164.37	2,784.17	1 ^A	1,312.19 ^A	517.19	6,661	1,769,262.37	912,056.45
179	9,307.37	10,219.09	44	2,211.17	5,694.17	322	6,567.25 ^A	6,328.50	38,215	11,884,388.11	3,083,766.00
60	3,117.78	3,643.56	13	541.13	1,400.00	1 ^A	2,948.14 ^A	3,187.46	14,256	3,044,292.28	876,233.66
6	120.50	10.45	—	—	—	18 ^A	135.50 ^A	21.28	(7) 1,090	28,735.66	3,588.09
2	69.18	220.00	8	269.17	835.27	—	544.80	73.81	2,214	570,927.85	270,865.38
68	3,307.46	3,874.01	21	810.30	2,285.27	19 ^A	2,538.84 ^A	3,134.93	17,560	3,643,955.79	1,150,687.13
34	3,615.33	2,674.30	9	382.42	1,260.00	1 ^A	1,010.39 ^A	2,033.70	12,435	3,318,457.81	822,010.92
13	132.90	26.76	—	—	—	138 ^A	6,663.54 ^A	1,179.37	(7) 2,003	62,723.77	9,202.63
7	2,963.50	711.97	11	473.10	1,289.91	—	23.08	—	1,964	553,495.34	257,930.38
54	6,711.73	3,418.03	20	855.52	2,549.91	137 ^A	7,650.85 ^A	3,213.07	16,402	3,984,676.92	1,089,143.93

(續) 地方別

第六表(三)

地方別及年金種類別	前年度末現在契約			新契約			死亡			
	件數	掛金額	年金額	件數	掛金額	年金額	件數	掛金額	年金額	
長野	終身年金	12,976	3,232,997.69	907,150.31	819	602,160.24	75,634.26	102	53,125.14	8,829.59
	團體年金	611	7,423.06	1,068.22	415	12,368.14	1,700.55	—	—	—
	定期年金	694	173,061.20	88,128.30	1,679	544,380.67	221,747.03	8	1,693.40	834.74
	計	14,281	3,413,481.95	996,346.83	2,913	1,158,909.05	298,081.84	110	54,818.54	9,664.33
古	終身年金	6,199	1,573,758.96	389,432.22	397	288,968.95	36,553.15	76	30,564.45	5,383.82
	團體年金	328	1,857.00	265.45	501	11,645.81	1,653.79	4	56.50	9.72
	定期年金	306	79,789.75	35,950.73	745	215,294.58	95,564.57	8	866.54	900.15
	計	6,833	1,655,405.71	425,648.40	1,643	515,909.34	133,771.51	88	31,487.49	6,293.69
石川	終身年金	6,053	1,860,795.58	436,688.81	470	372,489.02	45,510.16	98	36,732.97	6,018.83
	團體年金	446	7,760.45	919.89	326	5,501.60	795.20	3	77.70	13.99
	定期年金	309	67,831.41	37,488.08	829	256,233.44	104,165.13	6	1,090.17	612.12
	計	6,808	1,936,387.44	475,096.78	1,625	634,224.06	150,470.49	107	37,900.84	6,644.94
富山	終身年金	5,509	1,263,995.28	336,858.30	465	338,955.08	47,769.84	69	20,848.90	3,996.51
	團體年金	234	8,865.01	953.86	421	7,228.15	1,034.22	3	26.00	3.18
	定期年金	359	78,296.82	45,647.51	855	211,443.90	110,977.90	11	1,728.88	1,705.22
	計	6,102	1,351,157.11	385,459.67	1,741	557,627.13	159,781.96	83	22,608.78	5,704.91
合計	終身年金	79,411	20,957,424.16	5,557,285.76	5,521	4,851,566.81	599,587.78	886	328,231.28	58,513.83
	團體年金	5,872	120,434.51	16,537.72	7,411	279,320.82	35,876.30	29	404.10	65.91
	定期年金	5,162	1,130,483.83	642,640.06	11,575	3,408,969.47	1,552,688.77	82	17,735.33	10,454.75
	計	90,445	22,208,342.50	6,216,463.54	24,507	8,539,857.10	2,188,152.85	997	346,375.69	69,033.99
大阪	終身年金	29,293	9,950,118.03	2,321,898.52	3,418	3,826,966.53	598,595.79	349	165,800.27	26,752.00
	團體年金	2,197	64,136.88	8,669.74	3,289	138,099.57	15,321.77	12	690.13	77.17
	定期年金	4,265	915,381.61	599,158.48	9,636	2,584,787.75	1,577,778.78	72	10,008.46	9,636.09
	計	35,755	10,929,636.52	2,929,726.74	16,343	6,549,853.85	2,191,696.34	433	176,498.86	36,465.26
京都	終身年金	18,477	5,969,306.33	1,274,272.63	1,522	1,506,002.57	160,216.78	245	116,535.49	14,538.21
	團體年金	135	1,788.00	229.04	548	39,400.60	7,934.75	1	24.00	2.58
	定期年金	1,289	271,453.34	171,096.07	3,879	995,589.24	537,145.03	23	8,943.00	3,183.03
	計	19,901	6,242,547.67	1,445,597.74	5,949	2,540,992.41	705,296.56	269	125,502.49	17,723.82
兵庫	終身年金	22,304	7,527,519.10	1,864,175.75	2,124	2,795,963.36	361,633.92	231	98,932.52	16,088.52
	團體年金	2,132	181,071.45	22,184.70	2,128	744,393.62	90,056.62	13	11,469.34	1,090.59
	定期年金	2,258	682,057.34	350,951.22	5,525	2,024,423.11	977,901.27	24	7,726.55	4,279.10
	計	26,694	8,390,647.89	2,237,311.67	9,777	5,564,780.09	1,429,591.81	268	118,128.41	21,468.21

統計

昭和十五年度

解約	法定解除			其ノ他ノ事由=因ハ増減			年度末現在契約				
	件數	掛金額	年金額	件數	掛金額	年金額	件數	掛金額	年金額		
71	11,866.34	6,063.16	13	406.56	1,480.00	1	377.13	2,569.29	13,610	3,773,828.63	964,347.15
3	23.00	4.62	—	—	—	△ 60	741.00	102.66	963	34,020.50	4,775.43
4	220.03	414.22	7	315.73	816.39	—	△ 1,008.81	1,021.17	2,354	714,203.90	306,788.81
78	12,109.37	6,482.00	20	722.29	2,296.39	△ 59	1,372.68	3,698.12	16,927	4,522,053.03	1,275,911.39
12	5,076.25	1,223.92	2	45.49	240.00	—	△ 629.95	837.08	6,506	1,823,572.34	418,507.91
1	5.00	1.22	—	—	—	△ 70	845.80	110.99	754	21,434.31	3,052.04
3	433.34	344.51	3	173.71	321.72	—	—	—	1,037	293,610.74	129,948.92
16	5,514.59	1,589.65	5	219.20	561.72	△ 70	1,475.75	948.07	8,297	2,143,617.39	551,508.87
34	2,333.29	2,447.98	17	656.99	2,000.00	—	△ 423.53	2,026.96	6,374	2,194,179.07	469,841.85
8	93.00	15.85	—	—	—	△ 22	120.00	21.54	739	29,327.35	3,573.31
6	747.36	1,098.48	8	303.08	804.31	—	—	—	1,118	321,924.24	139,138.30
48	3,173.65	3,562.31	25	960.07	2,804.31	△ 22	543.53	2,048.50	8,231	2,545,430.66	612,553.46
34	3,046.51	3,560.92	14	666.17	1,680.00	1	433.51	878.77	5,858	1,579,521.67	374,686.53
—	—	—	—	—	—	△ 16	281.00	47.68	634	23,785.77	3,409.46
2	161.94	300.00	6	400.21	724.54	—	—	—	1,195	287,449.69	153,895.65
36	3,208.45	3,860.92	20	1,066.28	2,404.54	△ 17	714.51	926.45	7,687	1,895,757.13	581,991.64
362	35,861.27	27,504.27	88	3,745.56	10,970.00	918	10,215.99	16,189.15	84,514	25,476,428.12	6,046,563.71
73	1,480.00	267.41	—	—	—	△ 919	16,191.78	2,688.94	12,262	582,576.78	78,374.82
44	5,991.85	5,209.33	67	3,099.37	7,576.31	△ 1	1,733.12	1,464.55	16,543	4,510,874.13	2,170,623.89
479	43,332.62	32,981.01	155	6,844.93	18,546.31	△ 2	7,728.91	20,292.64	113,319	30,569,879.03	8,295,562.42
230	26,916.98	19,277.10	190	14,908.77	24,110.00	268	31,140.82	20,681.15	32,210	13,664,785.86	2,842,023.36
10	1,681.20	284.06	—	—	—	△ 289	14,117.18	1,725.06	5,085	308,292.26	38,154.85
45	4,640.71	7,187.04	176	10,839.37	22,085.62	△ 3	9,346.17	7,506.88	13,605	3,465,334.65	2,130,521.63
375	33,238.89	28,748.20	306	23,748.14	46,195.62	△ 24	54,604.17	29,913.09	50,900	17,438,412.77	5,010,699.84
71	10,387.23	6,359.14	39	4,126.06	5,460.00	7	14,850.22	15,620.35	19,651	7,352,253.83	1,394,928.89
—	—	—	—	—	—	△ 7	45.00	8.15	675	55,493.60	10,201.86
18	2,487.30	2,982.75	39	2,088.07	4,689.70	—	△ 8,976.14	8,492.44	5,088	1,214,548.07	688,893.18
89	12,874.53	9,341.89	78	6,214.13	10,149.70	—	△ 23,871.36	24,130.94	25,414	8,652,295.50	2,094,023.98
145	17,983.91	14,299.84	85	5,028.29	10,120.00	172	10,746.73	13,763.59	24,139	10,251,770.02	2,176,484.86
85	3,322.91	494.86	—	—	—	△ 175	9,150.47	1,413.50	3,987	1,268,526.68	153,172.28
21	1,758.67	3,289.32	69	4,939.22	9,171.70	△ 2	317.69	807.24	7,667	2,692,373.70	1,311,305.13
251	23,065.49	18,084.02	154	9,937.51	19,291.70	△ 5	1,913.95	15,984.33	25,793	14,212,670.40	3,640,962.27

(續) 地 方 別 詳 況

第六十表 (四)

地方別及年金種類別	前年度末現在契約			新 契 約			死 亡			
	件 數	掛 金 額	年 金 額	件 數	掛 金 額	年 金 額	件 數	掛 金 額	年 金 額	
										円
大 奈 良	終身年金	4,048	734,956.53	251,947.67	260	1,885.18 214,217.35	32,297.14	39	7,020.95	1,980.57
	團體年金	30	94.00	14.86	10	30.00	4.37	—	—	—
	定期年金	190	34,342.71	23,200.13	646	149,394.48	77,302.68	4	593.19	429.53
	計	4,268	769,393.24	275,162.66	916	1,885.18 383,641.83	109,604.19	43	7,614.14	2,410.10
大 滋 賀	終身年金	6,640	1,210,689.90	335,105.40	331	441.82 246,284.04	31,367.00	58	15,460.50	2,560.50
	團體年金	38	386.00	64.77	162	2,543.30 1,868.00	247.59	—	—	—
	定期年金	246	62,326.02	29,672.43	783	231,185.25	100,535.70	5	580.23	699.35
	計	6,924	1,273,401.92	364,842.60	1,276	2,988.12 479,837.29	182,150.29	63	16,040.73	3,259.85
大 和 歌 山	終身年金	6,079	1,457,292.46	440,545.16	360	553.55 279,741.29	38,661.53	37	17,798.98	2,590.92
	團體年金	241	5,924.20	1,253.16	123	12,007.20 4,164.06	514.01	—	—	—
	定期年金	447	75,895.26	54,472.51	1,196	357,085.80	178,482.06	4	723.53	522.44
	計	6,767	1,539,111.92	496,270.83	1,679	12,980.75 633,991.15	217,657.60	41	18,522.51	3,113.36
大 信 德 島	終身年金	4,698	969,006.78	296,329.89	272	3,717.35 151,635.59	24,247.45	53	13,624.58	3,094.00
	團體年金	22	132.00	20.43	51	1,988.80 1,513.80	181.53	—	—	—
	定期年金	175	35,076.33	22,257.98	597	134,049.63	79,468.82	2	659.69	200.00
	計	4,895	1,004,215.11	318,608.30	920	5,398.15 287,199.02	103,897.80	55	14,284.27	3,294.00
大 局 高 知	終身年金	4,251	1,009,983.63	824,552.85	277	1,888.49 204,900.84	28,856.87	49	18,982.91	4,953.70
	團體年金	43	862.50	111.15	57	4,317.30 415.00	63.57	—	—	—
	定期年金	156	58,165.86	23,694.65	471	140,345.38	68,827.03	1	72.53	100.00
	計	4,450	1,069,011.99	348,348.65	805	6,183.78 345,661.22	97,747.47	50	19,055.44	5,053.70
大 合 計	終身年金	95,790	28,828,872.76	7,108,827.87	8,564	197,045.01 9,225,711.57	1,275,876.48	1,061	454,156.20	72,558.42
	團體年金	4,838	254,395.03	32,547.85	6,368	824,829.28 929,884.65	114,324.21	26	12,183.47	1,170.34
	定期年金	9,025	2,194,698.47	1,274,493.47	22,733	6,609,860.64	3,597,441.37	135	29,807.18	19,049.54
	計	109,654	31,217,966.26	8,415,869.19	37,665	721,574.28 16,765,456.86	4,987,642.06	1,222	495,646.85	92,778.30
大 廣 島	終身年金	13,230	4,247,960.39	1,111,150.94	663	4,293.20 940,728.34	101,550.69	143	79,587.47	12,091.78
	團體年金	474	4,932.00	685.81	313	12,452.94 11,777.46	1,485.26	1	33.00	4.84
	定期年金	1,232	317,548.70	188,574.50	1,469	603,479.60	258,615.78	11	1,730.05	1,999.32
	計	14,936	4,570,441.09	1,300,411.25	2,445	16,718.14 1,555,985.40	361,651.73	155	81,850.52	14,095.94
大 廣 島 選 信 局	終身年金	3,462	711,605.16	271,829.56	190	436.52 167,116.71	25,338.88	38	8,477.51	2,304.30
	團體年金	43	170.00	32.67	32	1,208.00 546.65	177.41	—	—	—
	定期年金	472	88,119.32	61,425.78	475	141,151.85	74,618.29	4	813.58	438.43
	計	3,977	799,894.48	333,288.01	697	1,644.52 308,815.21	100,081.33	42	9,291.09	2,742.73

統 計 詳 況

昭和十五年度

解 約	法 定 解 除			其ノ他ノ事由ニ因ル増減			年 度 末 現 在 契 約					
	件 數	掛 金 額	年 金 額	件 數	掛 金 額	年 金 額	件 數	掛 金 額	年 金 額			
										円	円	円
30	7,818.65	2,675.96	8	184.67	940.00	—	5,788.87 [△]	3,095.86	4,231	930,025.92	275,744.76	
—	—	—	—	—	—	—	—	—	(4)	124.00	19.23	
3	399.97	325.44	4	198.23	503.08	—	—	—	825	182,545.80	99,244.76	
33	8,218.62	3,001.40	12	382.90	1,443.08	—	5,788.87 [△]	3,095.86	5,096	1,112,695.72	375,008.75	
12	792.27	687.00	3	72.51	360.00	—	124.18 [△]	813.44	6,898	1,440,969.30	362,105.62	
13	187.00	32.75	—	—	—	—	—	—	(8)	4,610.30	678.86	
2	66.27	221.29	7	290.24	772.60	—	171.42 [△]	626.78	1,015	292,403.11	127,888.11	
27	1,045.54	941.04	10	362.75	1,132.60	—	295.60 [△]	1,440.22	8,100	1,737,982.71	490,872.59	
18	622.12	1,252.17	10	479.60	1,140.00	—	2,710.69 [△]	683.29	6,390	1,721,397.29	473,589.34	
35	863.90	157.92	—	—	—	—	16 [△]	2,992.26 [△]	313	18,329.30	3,161.59	
6	441.67	878.57	18	1,142.48	2,173.18	—	—	7.26	1,615	423,673.38	229,373.12	
59	1,927.69	2,288.66	28	1,622.08	3,813.18	—	281.57 [△]	1,004.23	8,318	2,163,399.97	706,124.05	
26	1,731.83	2,992.23	2	45.80	220.00	—	83.54 [△]	27.15	4,901	1,109,041.05	314,561.70	
—	—	—	—	—	—	—	—	—	(4)	3,194.60	407.39	
—	—	—	—	—	—	—	—	—	—	768	168,386.28	101,272.21
26	1,731.83	2,992.23	4	125.79	420.92	—	16.46 [△]	100.90	5,730	1,280,621.93	416,241.30	
20	2,083.65	1,945.03	13	624.78	1,540.00	—	1,367.62 [△]	800.59	4,451	1,193,692.00	344,362.65	
—	—	—	—	—	—	—	—	—	(4)	6,438.73	813.50	
—	—	—	—	—	—	—	—	—	—	621	198,036.54	91,667.03
20	2,083.65	1,945.03	18	811.04	2,049.07	—	215.91 [△]	235.58	5,167	1,398,167.27	436,843.38	
552	68,336.64	49,488.47	350	25,470.48	43,890.00	—	739.60 [△]	960.99	102,871	37,663,985.27	8,183,801.88	
233	6,055.01	969.59	—	—	—	—	504 [△]	25,560.98 [△]	3,405.29	10,443	1,665,009.47	206,609.56
95	9,794.59	14,884.41	320	19,763.86	40,105.87	—	5 [△]	18,391.95 [△]	17,729.85	31,204	8,687,301.53	4,780,165.17
880	84,186.24	65,342.47	670	45,234.34	83,995.87	—	29 [△]	83,683.68 [△]	76,620.56	144,518	47,996,246.27	13,170,576.11
85	7,412.62	8,214.08	28	763.95	3,300.00	—	2,627.10 [△]	2,884.55	13,658	5,107,814.99	1,186,530.24	
6	104.00	13.56	—	—	—	—	—	—	(33)	28,667.90	3,785.30	
13	1,902.71	2,418.45	29	1,792.46	3,866.13	—	357.50 [△]	52.62	757	915,334.40	438,604.24	
104	9,419.33	10,646.09	57	2,556.41	7,166.18	—	268.68 [△]	302.14	2,648	6,051,817.29	1,628,919.78	
15	1,951.98	1,365.83	7	158.12	800.00	—	2,000.92 [△]	3,239.31	17,068	6,051,817.29	1,628,919.78	
6	33.00	6.85	—	—	—	—	—	—	(5)	1,848.65	269.11	
3	749.70	350.00	6	194.81	820.94	—	43.00 [△]	8.28	62	227,513.08	134,434.70	
24	2,734.68	1,722.68	13	352.93	1,621.94	—	—	—	934	227,513.08	134,434.70	

(續) 地 方 別

表六十五 (五)

地方別及年金種類別	前年度末現在契約			新 契 約			死 亡			
	件數	掛金額	年金額	件數	掛金額	年金額	件數	掛金額	年金額	
廣 島 根	終身年金	4,553	902,815.26	310,067.20	241	271,151.51	31,262.05	50	8,559.44	2,766.40
	團體年金	28	251.93	30.50	18	64.00	10.88	—	—	—
	定期年金	312	81,558.93	40,272.41	450	139,651.58	62,379.78	3	644.82	300.00
	計	4,893	984,626.12	350,370.11	709	410,867.09	93,652.71	53	9,204.26	3,066.40
山 岡 山	終身年金	8,328	2,143,883.37	674,511.41	411	448,647.36	55,704.41	65	31,648.74	5,628.89
	團體年金	61	1,297.50	181.53	39	123.00	20.51	—	—	—
	定期年金	659	134,286.00	81,800.32	779	224,324.01	101,918.53	4	506.14	400.00
	計	9,051	2,279,466.87	756,493.26	1,229	673,094.37	157,643.45	69	32,154.88	6,028.89
山 口 縣	終身年金	8,198	2,283,593.60	650,183.12	389	421,175.09	49,222.89	90	38,353.68	8,073.68
	團體年金	229	6,883.00	827.50	261	16,525.90	1,870.16	3	96.00	19.39
	定期年金	752	158,837.75	106,741.32	913	287,206.18	147,572.33	8	1,325.85	999.89
	計	9,179	2,449,284.35	757,751.94	1,563	724,907.17	198,665.38	101	39,775.53	9,092.96
信 香 川	終身年金	5,588	1,380,390.65	444,403.71	236	250,071.51	30,870.46	48	15,835.48	2,940.35
	團體年金	84	2,041.20	281.09	152	4,960.72	698.01	1	204.00	19.58
	定期年金	483	139,459.40	66,291.47	675	254,736.85	107,592.80	7	1,153.78	840.00
	計	6,155	1,521,891.25	510,976.27	1,063	509,769.08	139,161.27	56	17,193.26	3,799.93
局 愛 媛	終身年金	6,863	1,973,525.17	590,526.04	313	351,394.45	39,634.57	77	54,683.41	6,314.02
	團體年金	74	432.00	77.03	69	794.00	137.76	—	—	—
	定期年金	474	91,759.27	67,009.73	565	205,871.46	92,816.77	4	3,074.25	1,100.00
	計	7,411	2,065,716.44	657,612.80	947	558,069.91	132,589.10	81	57,757.66	7,414.02
合 計	終身年金	50,222	13,648,778.60	4,052,671.98	2,443	2,850,294.97	333,583.95	511	237,145.73	40,119.42
	團體年金	996	16,007.68	2,116.18	884	34,791.73	4,296.74	5	333.00	43.81
	定期年金	4,384	1,011,539.37	612,115.53	5,326	1,856,421.50	845,514.28	41	9,248.47	6,077.64
	計	55,602	14,671,326.60	4,666,903.64	8,653	4,741,498.23	1,183,394.97	557	246,727.20	46,240.87
熊 本	終身年金	6,384	1,999,927.33	559,396.31	383	499,771.63	56,084.53	60	30,718.04	4,341.37
	團體年金	—	—	—	78	24,305.00	2,250.89	1	5,000.00	385.12
	定期年金	660	161,596.18	91,804.82	814	262,413.00	124,173.64	6	1,356.27	832.83
	計	7,044	2,161,523.51	651,201.13	1,275	786,489.63	182,509.06	67	37,074.31	5,559.32
熊 本 信 長 崎	終身年金	7,417	2,493,039.02	638,772.76	440	603,967.43	66,380.63	92	30,748.83	7,064.26
	團體年金	47	141.00	27.58	145	3,546.60	493.26	—	—	—
	定期年金	962	227,955.48	135,821.40	784	303,649.18	140,790.85	12	2,418.56	2,158.99
	計	8,426	2,721,135.50	774,621.74	1,369	911,163.21	207,664.74	104	33,167.39	9,223.25

統 計 表

昭和十五年度

解 約	法 定 解 除			其ノ他ノ事由ニ因ル増減			年 度 末 現 在 契 約					
	件數	掛金額	年金額	件數	掛金額	年金額	件數	掛金額	年金額			
42	6,283.27	3,669.00	23	552.85	2,690.00	2 ^A	372.81 ^A	1,086.56	4,681	1,159,088.37	331,215.79	
—	—	—	—	—	—	—	2 ^A	17.00 ^A	3.06	44	1,235.54	166.54
4	169.99	450.24	5	246.83	697.30	—	35.64	—	750	220,184.51	101,204.65	
48	6,459.28	4,119.24	28	799.68	3,387.30	—	854.20 ^A	1,089.62	5,475	1,380,506.42	432,586.98	
67	5,197.61	6,745.56	29	814.77	3,400.00	8 ^A	30.94 ^A	2,020.26	8,586	2,555,510.95	712,504.64	
42	1,160.80	154.28	—	—	—	8 ^A	45.00 ^A	9.50	53	490.70	81.28	
2	135.99	274.01	13	763.53	1,649.70	—	—	12.73	1,419	357,204.35	181,407.87	
111	6,494.40	7,173.85	42	1,578.80	5,040.70	—	75.94 ^A	2,017.03	10,058	2,913,206.00	893,996.79	
63	7,991.01	4,675.95	46	1,442.41	5,780.00	24 ^A	14,149.85 ^A	4,615.33	8,412	2,654,513.30	677,325.86	
4	160.35	34.75	—	—	—	32 ^A	362.00 ^A	58.37	451	30,545.89	3,489.21	
2	110.85	236.13	18	835.17	2,188.70	—	—	—	1,637	443,742.06	250,888.93	
69	8,202.21	4,946.83	64	2,277.58	7,968.70	8 ^A	14,511.85 ^A	4,673.70	10,500	3,128,801.25	931,704.00	
19	709.44	1,544.93	11	507.19	1,280.00	3 ^A	5,174.05 ^A	1,143.45	5,749	1,608,796.53	468,447.19	
6	249.00	34.78	—	—	—	4	1,224.61	159.38	225	11,798.53	1,582.89	
1	71.22	120.00	7	447.82	768.57	—	404.26 ^A	392.87	1,143	392,119.17	171,762.83	
26	1,029.66	1,699.71	18	955.01	2,048.57	1 ^A	4,353.70 ^A	1,376.94	7,117	2,012,714.23	641,792.91	
53	4,508.33	4,748.02	35	827.92	4,220.00	32 ^A	1,067.72 ^A	1,939.48	7,043	2,266,470.04	613,205.72	
5	34.00	6.83	—	—	—	33 ^A	278.00 ^A	56.67	105	2,194.00	368.74	
8	396.18	890.27	9	459.80	999.48	—	322.90 ^A	281.94	1,018	293,377.60	156,554.81	
66	4,938.51	5,945.12	44	1,287.72	5,219.48	1 ^A	1,668.62 ^A	2,278.00	8,166	2,532,041.64	770,129.27	
344	34,054.26	30,963.37	179	5,037.21	21,470.00	97 ^A	19,278.78 ^A	14,824.99	51,728	16,219,654.48	4,280,832.39	
69	1,741.15	251.05	—	—	—	109	122.11 ^A	29.12	1,697	76,731.21	9,746.07	
33	3,536.64	4,739.10	87	4,740.42	10,990.82	—	980.20 ^A	964.22	9,549	2,849,475.17	1,434,853.03	
446	39,332.05	35,953.52	266	9,807.63	32,460.82	12 ^A	20,116.87 ^A	15,818.33	62,974	19,145,910.86	5,725,436.49	
44	3,661.79	5,064.32	49	2,345.96	6,940.00	2 ^A	2,833.51 ^A	2,280.79	6,616	2,460,927.16	596,985.42	
—	—	—	—	—	—	—	2 ^A	6.00 ^A	1.22	75	21,205.00	2,053.22
5	219.42	630.23	7	403.99	832.26	—	—	—	1,456	422,029.50	213,683.14	
49	3,881.21	5,694.55	56	2,749.95	7,772.26	—	2,839.51 ^A	2,232.01	8,147	2,904,161.66	812,721.78	
60	4,066.91	5,649.40	68	2,385.74	8,160.00	11 ^A	853.79 ^A	4,068.31	7,648	3,061,024.01	680,380.63	
2	18.00	3.01	—	—	—	10 ^A	465.00 ^A	51.43	180	6,232.10	883.49	
23	4,402.49	4,787.13	18	1,067.03	2,265.75	—	228.56 ^A	342.18	1,693	523,488.02	267,058.20	
85	8,487.40	10,439.54	86	3,452.77	10,425.75	1 ^A	1,547.95 ^A	4,461.92	9,521	3,590,744.13	948,322.32	

(續) 地 方 別

第 六 表 (六)

地方別及年金種類別	前年度末現在契約			新 契 約			死 亡			
	件數	掛金額	年金額	件數	掛金額	年金額	件數	掛金額	年金額	
福 岡	終身年金	15,282	5,778,005.45	1,374,773.55	1,184	1,892,621.40	210,345.65	157	50,735.85	9,900.42
	團體年金	493	22,473.00	2,728.48	204	5,985.40	788.48	2	235.50	35.24
	定期年金	2,347	497,740.95	338,959.72	3,356	1,011,567.10	576,685.78	22	3,133.07	2,674.49
	計	18,122	6,298,219.40	1,716,461.75	4,744	2,910,173.90	787,819.91	181	54,104.42	12,610.15
大 分	終身年金	5,456	1,686,448.56	458,854.21	409	513,802.10	58,510.34	57	15,144.02	3,785.84
	團體年金	—	—	—	37	264.50	39.27	—	—	—
	定期年金	796	211,532.74	112,046.44	1,145	392,618.17	183,734.41	13	1,118.28	1,460.07
	計	6,252	1,897,981.30	570,900.65	1,591	906,684.77	242,284.02	70	16,262.30	5,245.91
佐 賀	終身年金	3,279	842,154.85	261,457.61	170	154,317.55	20,736.01	29	6,981.79	1,485.60
	團體年金	—	—	—	—	—	—	—	—	—
	定期年金	431	93,618.93	59,951.71	444	178,378.26	75,272.89	5	183.73	559.29
	計	3,710	935,773.78	321,409.32	614	332,695.81	96,008.90	34	7,165.52	2,044.89
宮 崎	終身年金	3,350	826,925.48	271,212.61	219	180,369.34	25,063.00	33	18,463.70	3,329.06
	團體年金	—	—	—	—	—	—	—	—	—
	定期年金	319	85,180.69	46,735.75	544	158,856.75	82,980.22	3	133.58	328.53
	計	3,669	912,106.17	317,948.36	763	339,225.09	108,043.22	36	18,597.28	3,657.59
鹿 兒 島	終身年金	6,082	1,294,056.24	414,356.64	369	361,369.38	46,872.38	44	12,407.71	3,579.75
	團體年金	—	—	—	—	—	—	—	—	—
	定期年金	426	137,301.22	56,688.36	848	274,885.71	119,706.94	3	1,128.06	330.00
	計	6,508	1,431,357.46	471,045.00	1,217	636,255.09	166,579.32	47	13,535.77	3,909.75
沖 繩	終身年金	1,363	238,532.74	104,730.13	125	93,185.04	17,746.71	12	1,553.79	960.00
	團體年金	37	141.00	17.74	49	169.00	24.44	—	—	—
	定期年金	112	41,334.92	16,763.79	327	143,275.16	56,700.33	—	—	—
	計	1,512	280,008.66	121,511.66	501	236,629.20	74,471.48	12	1,553.79	960.00
合 計	終身年金	48,613	15,159,089.67	4,083,553.82	3,299	4,299,403.87	501,739.25	484	166,753.73	34,446.30
	團體年金	577	22,755.00	2,773.80	513	34,270.50	3,596.34	3	5,235.50	420.36
	定期年金	6,053	1,456,261.11	858,771.99	8,262	2,725,643.33	1,360,045.06	64	9,471.55	8,344.20
	計	55,243	16,638,105.78	4,945,099.61	12,074	7,059,317.70	1,865,380.65	551	181,460.78	43,210.86
宮 城	終身年金	7,933	1,918,298.08	601,594.81	267	331,246.34	37,395.74	48	18,390.26	4,475.89
	團體年金	59	643.00	86.83	262	1,075.50	167.09	—	—	—
	定期年金	412	100,265.22	54,283.20	559	249,659.18	91,191.71	5	567.62	542.70
	計	8,404	2,019,206.30	655,964.84	1,088	581,981.02	128,754.54	53	18,957.88	5,018.59

統 計

昭和十五年度

解 約	法 定 解 除			其ノ他ノ事由=因ル増減			年 度 末 現 在 契 約				
	件數	掛金額	年金額	件數	掛金額	年金額	件數	掛金額	年金額		
149	19,462.66	13,014.75	123	6,373.27	15,760.00	36 [△]	2,783.27 [△]	7,072.33	16,073	7,598,491.76	1,540,120.46
27	590.00	92.85	—	—	—	36 [△]	1,592.30 [△]	188.10	632	52,273.40	6,681.94
27	3,092.18	4,418.56	75	4,839.89	10,333.43	— [△]	832.96 [△]	1,430.91	5,579	1,497,409.95	896,788.11
203	23,144.84	17,526.16	198	11,213.16	26,093.43	— [△]	5,208.53 [△]	8,691.34	22,284	9,148,175.11	2,443,590.51
34	3,650.03	3,087.65	41	1,421.21	4,913.51	— [△]	455.57 [△]	1,586.35	5,733	2,179,629.83	503,996.93
—	—	—	—	—	—	—	—	—	37	305.00	44.28
3	624.02	302.44	19	915.26	2,152.22	—	—	—	1,906	601,493.35	291,866.12
37	4,274.05	3,390.09	60	2,336.47	7,065.73	— [△]	455.57 [△]	1,588.35	7,676	2,781,428.18	795,907.33
29	2,152.71	2,717.69	22	1,044.08	2,800.00	— [△]	212.80 [△]	1,206.35	3,369	986,502.33	274,048.11
—	—	—	—	—	—	—	—	—	—	—	—
2	496.33	232.27	9	533.54	1,084.32	— [△]	40.00 [△]	101.45	859	270,743.59	133,247.27
31	2,649.04	2,949.96	31	1,577.62	3,884.32	— [△]	252.80 [△]	1,307.80	4,228	1,257,245.92	407,295.38
24	844.36	2,040.38	19	801.25	2,387.00	— [△]	315.61 [△]	356.76	3,493	987,406.47	288,242.41
—	—	—	—	—	—	—	—	—	—	—	—
2	189.84	200.00	9	486.24	1,039.85	—	—	—	849	243,227.78	128,147.59
26	1,034.20	2,240.38	28	1,287.49	3,426.85	— [△]	315.61 [△]	356.76	4,342	1,230,634.25	416,390.00
35	2,413.95	2,581.17	58	2,228.56	7,620.00	1 [△]	424.78 [△]	4,572.94	6,313	1,638,020.45	442,885.16
—	—	—	—	—	—	—	—	—	—	—	—
2	111.19	200.00	12	1,101.29	2,106.41	— [△]	10.12	—	1,257	409,836.27	173,758.89
37	2,525.14	2,781.17	70	3,329.85	9,726.41	1 [△]	434.90 [△]	4,572.94	7,570	2,047,856.72	616,644.05
15	153.80	1,131.53	15	258.40	1,780.00	1 [△]	1,167.33 [△]	683.95	1,447	328,584.46	117,921.36
—	—	—	—	—	—	—	—	—	84	727.00	93.69
1	411.60	100.00	4	174.41	550.04	—	—	—	434	184,024.07	72,814.08
16	565.40	1,281.53	19	432.81	2,330.04	1 [△]	1,173.33 [△]	684.68	1,965	513,835.53	190,829.13
390	36,406.21	35,286.89	395	16,858.47	50,360.51	49 [△]	9,046.66 [△]	21,827.78	50,692	19,240,586.47	4,444,580.48
29	608.00	95.86	—	—	—	50 [△]	2,069.30 [△]	241.48	1,008	80,742.50	9,756.62
65	9,547.07	10,870.63	153	9,521.65	20,364.28	— [△]	1,111.64 [△]	1,874.54	14,033	4,152,252.53	2,177,363.40
484	46,561.28	46,253.38	548	26,380.12	70,724.79	1 [△]	12,227.60 [△]	23,943.80	65,733	23,473,581.50	6,631,700.50
37	4,908.01	2,963.11	20	481.51	2,340.00	— [△]	1,651.36 [△]	1,738.93	8,095	2,242,908.68	629,497.62
—	—	—	—	—	—	—	—	—	320	3,398.50	481.27
2	808.59	220.00	10	565.94	1,399.97	— [△]	208.00	389.19	954	347,774.25	143,701.43
39	5,716.60	3,183.11	30	1,047.45	3,739.97	1 [△]	1,865.36 [△]	1,350.67	9,369	2,594,081.43	773,680.32

(續) 地 方 別

第六表 (七)

地方別及年金種類	前年度末現在契約			新 契 約			死 亡			
	件數	掛金額	年金額	件數	掛金額	年金額	件數	掛金額	年金額	
仙 瀨 島	終身年金	11,240	3,481,262.58	938,560.19	592	1,438.20 1,006,544.86	155.77 88,784.94	118	50,175.36	8,715.53
	團體年金	—	—	—	101	1,320.00 1,034.50	189.85 108.97	—	—	—
	定期年金	572	178,687.09	80,674.89	526	294,932.56 2,788.20	91,276.01 25.82	3	137.13	410.01
	計	11,812	3,659,949.67	1,019,235.08	1,219	1,302,511.92	180,169.92	121	50,312.49	9,125.54
岩 手 縣	終身年金	5,509	1,157,466.18	419,054.93	325	2,855.27 337,710.84	258.44 40,034.00	60	18,426.10	4,325.39
	團體年金	—	—	—	10	57.80	13.18	—	—	—
	定期年金	331	108,012.97	48,662.33	408	181,453.81 2,355.27	62,534.96 258.44	3	435.15	449.95
	計	5,840	1,265,479.15	467,717.26	743	519,222.45	102,582.14	63	18,861.25	4,775.34
青 森 縣	終身年金	4,594	1,047,107.83	355,472.45	183	281.03 216,164.74	25.00 25,549.97	49	12,368.73	3,698.31
	團體年金	46	146.00	25.13	178	2,458.00 1,755.60	316.80 218.10	—	—	—
	定期年金	310	62,597.35	43,930.19	365	98,863.56 2,737.03	51,823.02 341.80	3	735.37	319.92
	計	4,950	1,109,851.18	399,427.77	726	316,783.90	77,591.09	52	13,104.10	4,018.23
山 形 信	終身年金	8,854	1,547,636.21	535,970.44	295	2,108.48 265,555.25	281.58 31,470.43	72	20,422.11	5,278.97
	團體年金	15	998.00	111.92	67	1,844.50 1,161.30	184.44 146.45	—	—	—
	定期年金	392	106,725.57	48,449.91	473	187,549.89 3,752.98	69,325.62 448.03	11	3,135.41	1,479.54
	計	9,261	1,655,359.78	584,532.27	835	454,266.45	100,942.50	83	23,557.52	6,758.51
秋 田 局	終身年金	4,779	874,526.24	368,803.17	250	237.37 416,780.48	25.00 41,416.00	35	12,690.91	2,301.55
	團體年金	50	445.70	62.60	28	3,588.40 133.20	509.07 22.43	—	—	—
	定期年金	413	139,668.72	61,100.88	579	358,356.65 3,834.37	115,114.50 534.07	7	2,178.28	1,220.00
	計	5,242	1,014,640.66	429,966.65	857	776,270.38	156,552.98	42	14,869.19	3,521.55
合 計	終身年金	42,929	10,046,297.12	3,219,455.99	1,912	25,218.33 2,574,002.52	2,748.80 284,651.08	382	132,473.47	28,795.64
	團體年金	170	2,232.70	286.48	646	10,702.50 5,217.90	1,408.24 676.22	—	—	—
	定期年金	2,430	695,956.92	337,101.40	2,910	1,370,815.65 35,919.85	481,205.82 4,187.04	32	7,168.96	4,422.12
	計	45,529	10,744,486.74	3,556,843.87	5,468	3,950,036.07	746,593.12	414	139,662.43	33,217.76
札 幌 道	終身年金	14,481	4,851,591.59	1,517,257.94	1,083	48,610.87 2,523,817.22	4,323.20 250,456.70	158	115,022.97	17,198.02
	團體年金	303	5,335.92	859.06	173	11,688.94 1,427.24	1,798.88 189.89	1	49.00	7.45
	定期年金	1,176	325,385.00	187,856.42	1,717	576,010.97 55,297.81	324,325.72 6,048.38	10	1,069.07	1,563.22
	計	15,960	5,182,312.51	1,705,973.42	2,973	3,101,255.43	574,972.31	169	116,141.04	18,768.69
內 地 計	終身年金	449,208	134,469,686.89	36,195,979.41	36,755	488,169.58 42,786,736.92	43,247.45 5,463,601.29	4,658	1,949,408.38	351,360.80
	團體年金	16,003	501,572.05	66,125.95	30,713	1,027,376.42 2,086,565.89	158,027.82 267,183.13	89	22,678.65	2,169.73
	定期年金	56,419	10,996,393.18	7,530,969.25	102,997	25,490,868.44 1,483,842.00	14,924,921.12 123,276.07	754	115,297.34	97,691.29
	計	521,630	145,967,652.12	43,793,074.61	170,465	70,364,171.25	20,655,705.54	5,501	2,087,384.37	451,221.82

統 計

昭和十五年度

解 約	法 定 解 除			其ノ他ノ事由=因ル増減			年 度 末 現 在 契 約				
	件數	掛金額	年金額	件數	掛金額	年金額	件數	掛金額	年金額		
33	7,113.36	3,366.17	23	880.91	2,800.00	— [△]	11,553.44 [△]	2,604.87	11,658	4,419,523.17	1,010,014.33
—	—	—	—	—	—	— [△]	5.00 [△]	.46	100	2,349.50	278.36
2	805.69	300.00	8	649.58	920.86	—	41.91	5.34	1,085	472,069.16	170,325.37
35	7,919.05	3,666.17	31	1,580.49	3,720.86 [△]	— [△]	11,516.53 [△]	2,599.99	12,843	4,893,941.83	1,180,618.06
26	1,636.33	2,143.27	30	1,606.54	3,910.00	— [△]	1,750.94 [△]	2,961.37	5,718	1,474,112.38	446,005.34
—	—	—	—	—	—	—	—	—	10	57.80	13.18
—	—	—	6	430.72	770.44	—	—	—	730	288,600.91	109,976.90
26	1,636.33	2,143.27	36	2,037.26	4,680.44	— [△]	1,750.94 [△]	2,961.37	6,458	1,762,771.09	555,995.42
24	3,141.35	2,954.87	23	1,333.93	3,110.00	— [△]	64.11 [△]	816.38	4,682	1,246,773.70	370,467.86
—	—	—	—	—	—	— [△]	28.00 [△]	4.79	223	4,329.60	555.04
8	450.04	866.91	2	60.56	209.75	—	—	—	662	160,214.94	94,356.63
32	3,591.39	3,821.78	25	1,994.49	3,319.75	—	36.11 [△]	821.17	5,567	1,411,318.24	465,379.53
50	6,685.58	2,960.03	24	855.51	2,870.00	— [△]	1,337.42 [△]	3,252.30	9,005	1,785,999.31	553,341.16
—	—	—	—	—	—	— [△]	94.50 [△]	12.56	79	3,709.30	430.25
1	26.28	101.39	6	294.80	618.06 [△]	— [△]	608.21 [△]	524.24	846	290,210.76	115,052.30
51	6,711.86	3,061.42	30	1,150.31	3,488.06 [△]	— [△]	2,040.18 [△]	3,789.10	9,930	2,079,919.87	668,823.71
27	2,997.18	2,606.01	21	680.87	2,780.00	— [△]	1,060.81 [△]	1,955.14	4,967	1,294,114.92	400,601.47
7	111.00	22.45	—	—	—	— [△]	59.00 [△]	9.18	70	4,005.30	562.47
4	2,446.24	600.00	3	157.84	329.92	—	12.54	—	978	493,255.55	174,065.46
38	5,554.42	3,228.40	24	838.71	3,109.92	— [△]	1,107.27 [△]	1,964.82	6,015	1,791,375.77	575,229.40
197	26,481.81	16,993.46	141	5,839.27	17,810.00	— [△]	17,289.86 [△]	13,323.99	44,125	12,463,432.16	3,403,927.78
7	111.00	22.45	—	—	—	— [△]	192.50 [△]	27.92	802	17,850.00	2,320.57
17	4,536.84	2,088.80	35	2,159.44	4,249.00 [△]	— [△]	761.76 [△]	129.71	5,255	2,052,125.57	807,473.03
221	31,129.65	19,104.21	176	7,998.71	22,059.00 [△]	— [△]	18,244.12 [△]	13,486.62	50,182	14,533,407.73	4,219,726.44
142	16,787.24	15,987.00	47	1,731.51	6,020.00	— [△]	2,711.73 [△]	5,941.72	15,250	7,282,766.03	1,726,891.10
7	268.00	34.02	—	—	—	— [△]	710.50 [△]	110.46	435	17,422.60	2,623.70
23	2,077.42	3,709.85	32	2,543.94	5,428.70	— [△]	514.28 [△]	635.89	2,828	895,171.26	500,844.48
172	19,152.66	19,730.87	79	4,275.45	11,448.70	— [△]	3,936.51 [△]	6,688.07	18,513	8,195,359.89	2,230,359.28
2,820	322,876.76	255,011.89	1,672	81,672.15	209,594.70	— [△]	102,990.71 [△]	183,172.23	478,812	175,257,641.39	40,708,683.53
504	13,804.76	2,103.45	—	—	—	— [△]	53,371.32 [△]	7,988.40	44,071	3,525,659.63	456,075.12
478	59,383.80	72,326.26	1,137	65,555.98	142,016.09 [△]	— [△]	22,312.33 [△]	27,468.87	157,036	36,224,712.17	22,116,387.86
3,802	396,065.32	329,441.60	2,809	147,228.13	351,610.79 [△]	— [△]	178,674.36 [△]	218,629.50	679,919	215,088,013.19	63,281,151.51

地方別

第六表(八)

地方別及年金種類別	前年度末現在契約			新契約			死亡			
	件数	掛金額	年金額	件数	掛金額	年金額	件数	掛金額	年金額	
臺灣	終身年金	997	412,240.16	108,346.29	52	158,599.70	23,508.90	10	1,683.14	930.00
	團體年金	—	—	—	—	—	—	—	—	—
	定期年金	78	28,269.05	17,754.54	137	51,257.80	32,409.01	1	659.22	600.00
	計	1,075	440,509.21	126,100.83	189	209,857.50	55,917.91	11	2,342.36	1,530.00
樺太	終身年金	872	564,743.13	126,024.03	172	341,401.43	35,653.41	4	549.43	382.00
	團體年金	117	12,701.50	1,451.14	94	2,992.00	365.13	—	—	—
	定期年金	227	48,960.74	39,457.55	264	84,781.71	53,819.06	2	171.42	438.42
	計	1,216	626,405.37	166,932.72	530	429,175.14	89,837.60	6	720.85	820.42
南洋	終身年金	94	22,963.82	22,293.94	54	23,725.49	14,426.02	—	—	—
	團體年金	13	39.00	6.24	136	1,118.76	139.70	—	—	—
	定期年金	137	15,356.65	21,090.78	186	22,545.58	27,953.19	1	34.28	131.64
	計	244	38,359.47	43,390.96	376	47,389.83	42,518.91	1	34.28	131.64
關東州	終身年金	1,535	298,356.37	156,633.44	21	86,096.10	9,425.93	15	469.26	1,459.21
	團體年金	13	62.00	8.93	—	—	—	—	—	—
	定期年金	21	4,396.30	3,818.20	17	5,092.82	4,583.39	1	57.14	128.52
	計	1,569	302,814.67	160,460.57	38	91,188.92	14,009.32	16	526.40	1,587.73
滿洲國	終身年金	28	65,495.33	8,395.00	5	13,881.83	2,092.00	—	—	—
	團體年金	—	—	—	—	—	—	—	—	—
	定期年金	1	45.81	209.05	—	—	—	—	—	—
	計	29	65,541.14	8,604.05	5	13,881.83	2,092.00	—	—	—
其ノ他	終身年金	11	14,233.97	4,690.00	—	—	—	—	—	—
	團體年金	—	—	—	—	—	—	—	—	—
	定期年金	1	187.52	360.00	3	345.16	900.00	—	—	—
	計	12	14,421.49	5,050.00	3	345.16	900.00	—	—	—
總計	終身年金	452,745	135,847,719.67	36,622,362.11	37,059	43,410,441.47	5,548,707.55	4,687	1,952,110.21	354,132.01
	團體年金	16,146	514,374.55	67,592.26	30,943	2,090,676.65	267,687.96	89	22,678.65	2,169.73
	定期年金	56,884	11,033,603.25	7,613,659.37	103,604	25,654,891.51	15,044,585.77	759	116,219.40	98,989.87
	計	525,775	147,455,703.47	44,303,613.74	171,606	71,156,009.63	20,860,981.28	5,535	2,091,008.26	455,291.61

備考 1. 新契約及年度末現在契約件数欄中括弧内ノ数字ハ團體年金ノ團體組合数ヲ示シ新契約掛金額及年金額欄中上
2. 死亡ノ計數ハ保證期間内ニ年金受取人ノ死亡セルモノヲ含マス。

統計

昭和十五年度

解約	法定解除			其ノ他ノ事由ニ因ル増減			年度末現在契約					
	件数	掛金額	年金額	件数	掛金額	年金額	件数	掛金額	年金額			
3	92.34	340.00	340.00	4	541.14	640.00	△	68.97 ^A	267.49	1,032	568,580.15	129,693.20
1	68.57	106.97	106.97	3	294.52	501.29	—	—	—	210	78,504.54	48,955.29
4	160.91	446.97	446.97	7	835.66	1,141.29	△	68.97 ^A	267.49	1,242	647,084.69	178,648.49
9	773.18	900.00	900.00	4	551.06	740.00	9 ^A	2,541.29 ^A	917.11	1,036	912,635.04	159,847.20
1	57.14	145.27	145.27	3	433.53	439.81	△	673.00 ^A	66.34	201	20,771.50	2,558.21
10	880.32	1,045.27	1,045.27	7	984.59	1,179.81 ^A	1 ^A	3,877.43 ^A	1,612.04	1,722	1,065,823.76	254,029.93
—	—	—	—	3	279.40	500.00	10	254.00	27.87	155	52,107.95	36,745.47
—	—	—	—	—	—	—	△	254.00 ^A	27.87	139	1,100.76	147.45
—	—	—	—	—	—	—	—	—	—	322	37,867.95	48,912.33
—	—	—	—	3	279.40	500.00	—	—	—	616	91,076.66	85,805.25
20	668.92	2,095.26	2,095.26	1	13.76	120.00	2 ^A	497.06 ^A	588.47	1,522	382,854.47	161,802.50
—	—	—	—	—	—	—	△	73.00 ^A	8.92	11	245.00	36.62
—	—	—	—	1	34.28	120.17	—	—	—	36	9,397.70	8,152.90
20	668.92	2,095.26	2,095.26	2	48.04	240.17	△	570.06 ^A	597.39	1,569	392,497.17	169,992.02
1	12,130.65	1,285.00	1,285.00	1	30.25	120.00	—	△	1,004.40	31	67,216.26	8,077.60
—	—	—	—	—	—	—	—	—	—	1	45.81	209.05
1	12,130.65	1,285.00	1,285.00	1	30.25	120.00	—	△	1,004.40	32	67,262.07	8,286.65
—	—	—	—	—	—	—	—	—	—	11	14,233.97	4,690.00
—	—	—	—	—	—	—	—	—	—	4	532.68	1,260.00
—	—	—	—	—	—	—	—	—	—	15	14,766.65	5,950.00
2,853	336,541.85	259,632.15	259,632.15	1,685	83,087.76	211,714.70	2,020 ^A	105,844.03 ^A	185,921.83	482,599	177,255,269.23	41,209,544.50
504	13,804.76	2,103.45	2,103.45	—	—	—	△	2,074 ^A	54,371.32 ^A	44,422	3,547,776.89	458,817.40
480	59,509.51	72,578.50	72,578.50	1,144	66,318.31	143,077.36 ^A	11 ^A	22,975.47 ^A	28,097.46	153,094	36,483,478.07	22,315,501.95
3,837	409,856.12	334,314.10	334,314.10	2,829	149,406.07	354,792.06 ^A	65 ^A	183,190.82 ^A	222,110.82	685,115	217,286,524.19	63,983,863.85

段ノ数字ハ隨時拂契約ノ掛金第二回以後拂込ニヨル掛金額及年金額ヲ示ス。

新契約年齡五

第七表

契約年齡及男女別	終身年金						
	即時		一時拂		分割拂		隨
	件數	年金額	件數	年金額	件數	年金額	件數
五歲以下 {男女}	—	—	—	—	—	—	—
十歲以下 {男女}	—	—	—	—	—	—	—
十五歲以下 {男女}	—	—	898	132,738.00	484	65,052.00	66
	—	—	624	93,427.00	245	35,904.00	45
二十歲以下 {男女}	1	100.00	925	129,875.00	782	109,777.00	95
	5	480.00	644	90,194.00	342	51,385.00	73
二十五歲以下 {男女}	22	2,935.00	683	101,771.00	794	128,060.00	103
	40	3,462.00	555	87,696.00	626	96,669.00	82
三十歲以下 {男女}	22	5,225.00	866	107,835.00	1,285	211,375.00	190
	99	13,486.00	697	98,879.00	825	138,353.00	117
三十五歲以下 {男女}	29	5,970.00	874	134,864.00	1,070	197,838.00	201
	127	14,115.00	888	126,247.00	903	165,441.00	145
四十歲以下 {男女}	139	21,953.00	1,059	181,908.00	908	191,724.00	213
	250	32,115.00	1,037	152,516.00	815	142,213.00	176
四十五歲以下 {男女}	579	84,820.00	754	113,436.00	649	131,594.00	146
	614	94,279.00	818	106,426.00	549	96,220.00	173
五十歲以下 {男女}	877	133,583.00	433	78,878.00	395	85,710.00	93
	952	128,912.91	463	60,590.00	304	57,507.00	100
五十五歲以下 {男女}	1,076	179,019.00	198	38,612.00	179	37,830.00	47
	1,011	131,417.00	179	22,228.00	138	21,472.00	43
六十歲以下 {男女}	1,016	165,740.00	67	10,278.00	62	9,820.00	22
	916	123,854.00	52	6,103.00	50	8,630.00	26
六十五歲以下 {男女}	861	149,389.00	—	—	—	—	—
	702	94,647.00	—	—	—	—	—
七十歲以下 {男女}	512	81,396.00	—	—	—	—	—
	374	51,587.00	—	—	—	—	—
七十五歲以下 {男女}	267	42,765.00	—	—	—	—	—
	174	24,363.00	—	—	—	—	—
八十歲以下 {男女}	67	13,237.00	—	—	—	—	—
	52	7,619.00	—	—	—	—	—
合計 {男女計}	5,468	886,132.00	6,757	1,080,195.00	6,608	1,168,780.00	1,176
	5,316	720,336.91	5,957	844,306.00	4,797	813,794.00	980
	10,784	1,606,468.91	12,714	1,874,501.00	11,405	1,982,574.00	2,156

歲階級別統計

昭和十五年年度

時拂	團體年金		定期年金				合計	
	—		一時拂		分割拂		—	
	年金額	件數	年金額	件數	年金額	件數	年金額	件數
—	—	—	9,216	1,466,996.00	28,105	3,824,957.07	37,321	5,291,953.07
—	—	—	6,125	871,389.00	19,643	2,505,909.22	25,768	3,377,298.22
—	—	—	7,195	1,250,578.00	11,875	1,711,712.10	19,070	2,962,290.10
—	—	—	4,346	655,816.00	7,859	1,028,041.29	12,205	1,683,857.29
3,049.67	849	1,782.85	2,839	621,599.00	2,529	448,156.90	7,665	1,272,378.42
798.89	246	1,882.62	1,646	283,223.00	1,635	235,630.19	4,441	650,865.70
2,331.72	4,581	15,631.98	390	107,338.00	—	—	6,774	365,053.70
2,057.28	941	1,759.03	201	33,240.00	—	—	2,206	179,115.31
4,787.32	3,650	24,068.18	—	—	—	—	5,252	261,621.50
2,966.93	611	2,201.25	—	—	—	—	1,914	192,995.18
6,205.42	4,889	40,993.81	—	—	—	—	7,252	371,634.23
5,418.61	427	1,492.76	—	—	—	—	2,165	257,629.37
8,164.85	3,976	37,587.15	—	—	—	—	6,150	384,424.00
4,845.92	319	1,301.70	—	—	—	—	2,382	311,950.62
12,542.95	3,358	43,505.99	—	—	—	—	5,677	451,633.94
6,466.23	204	1,163.43	—	—	—	—	2,482	334,473.66
7,398.23	2,553	37,758.14	—	—	—	—	4,681	375,006.37
6,873.99	155	3,485.82	—	—	—	—	2,309	307,284.81
3,868.45	2,528	26,931.64	—	—	—	—	4,326	328,971.09
3,767.57	85	1,881.40	—	—	—	—	1,904	252,658.88
1,141.49	1,298	17,241.99	—	—	—	—	2,798	273,814.48
1,152.88	48	111.16	—	—	—	—	1,419	176,381.04
615.38	210	6,850.17	—	—	—	—	1,377	193,303.55
709.86	15	56.89	—	—	—	—	1,059	139,353.75
—	—	—	—	—	—	—	861	149,389.00
—	—	—	—	—	—	—	702	94,647.00
—	—	—	—	—	—	—	512	81,396.00
—	—	—	—	—	—	—	374	51,587.00
—	—	—	—	—	—	—	267	42,765.00
—	—	—	—	—	—	—	174	24,363.00
—	—	—	—	—	—	—	67	13,237.00
—	—	—	—	—	—	—	52	7,619.00
50,105.48	27,892	252,351.90	19,640	3,446,511.00	42,509	5,984,826.07	110,050	12,818,901.45
35,058.16	3,051	15,336.06	12,318	1,843,668.00	29,137	3,769,580.70	61,556	8,042,079.83
85,163.64	30,943	267,687.96	31,958	5,290,179.00	71,646	9,754,406.77	171,606	20,860,981.28

新契約掛金

第八表

掛金額別	終身年金							
	即時		一時拂		分割拂		隨	
	件數	掛金額	件數	掛金額	件數	掛金額	件數	掛金額
五圓未滿	—	—	—	—	36	169.68	—	—
十圓未滿	—	—	—	—	176	1,304.11	7	—
二十圓未滿	—	—	—	—	351	5,392.54	83	—
三十圓未滿	—	—	26	720.98	1,088	27,728.50	116	—
五十圓未滿	—	—	85	3,451.22	2,065	82,302.12	260	—
百圓未滿	—	—	233	18,238.15	3,436	243,076.42	425	—
二百圓未滿	8	1,453.94	1,089	166,023.23	2,427	335,372.21	423	—
五百圓未滿	947	409,102.54	3,741	1,292,910.78	1,310	385,701.72	428	—
千圓未滿	2,453	1,788,956.46	3,281	2,337,640.88	331	225,969.01	204	—
二千圓未滿	4,487	6,840,212.43	2,685	3,494,092.58	144	189,846.94	147	—
五千圓未滿	1,822	5,453,673.08	1,058	3,210,473.24	39	105,444.17	51	—
一萬圓未滿	676	4,751,887.09	361	2,312,472.26	2	12,291.54	6	—
一萬圓以上	391	6,611,201.82	155	2,303,982.63	—	—	6	—
合計	10,784	25,856,487.36	12,714	15,140,005.95	11,405	1,614,598.96	2,156	—

年金支拂

第九表

年金種類及支拂開始年齢別	前年度末現在支拂契約		年度中支拂開始		死
	件數	年金額	件數	年金額	
即時	64,771	4,734,133.32	3,434	444,453.91	1,734
保證即時	2,821	351,497.36	7,350	1,162,015.00	—
計	67,592	5,085,630.68	10,784	1,606,468.91	1,734
一時拂	2,318	169,961.19	831	59,079.68	27
五十歲開始	1,355	108,689.43	353	29,434.23	29
五十五歲開始	888	72,966.68	209	14,463.00	21
六十歲開始	406	33,377.46	110	5,691.33	13
六十五歲開始	4,967	384,994.76	1,503	108,668.24	90
計	1,092	148,546.96	396	51,303.32	16
分割拂	734	100,775.60	171	22,221.77	21
五十歲開始	460	64,441.74	126	21,100.86	15
五十五歲開始	214	27,944.50	55	7,672.36	8
六十歲開始	2,500	341,708.80	748	102,298.81	60
六十五歲開始	75,059	5,812,334.24	13,035	1,817,435.46	1,884
計					

類別統計

昭和十五年度

時拂掛金額	定期年金				合計	
	團體年金		一時拂		分割拂	
	件數	掛金額	件數	掛金額	件數	掛金額
—	11,487	35,213.26	—	—	11,523	35,382.94
64.97	4,114	24,786.91	—	—	4,297	26,155.99
1,180.46	4,576	57,203.74	—	583	5,593	74,540.43
2,885.29	1,877	44,539.32	—	10,268	13,375	346,750.89
10,421.10	2,125	83,096.85	—	22,869	27,404	1,053,967.94
28,290.77	3,135	226,859.34	—	27,322	34,551	2,400,339.22
53,958.03	2,476	311,800.70	—	8,032	14,455	1,928,087.99
127,297.39	529	161,105.18	21,802	7,667,692.32	30,898	10,687,556.80
137,612.14	236	161,733.59	6,068	4,183,858.80	12,926	9,083,289.52
183,611.47	189	257,079.86	2,676	3,631,432.85	10,398	14,692,269.69
145,018.86	152	429,154.38	1,214	3,565,834.12	4,344	12,929,402.72
35,060.83	47	298,103.52	174	1,171,237.32	1,266	8,581,052.56
73,947.89	—	—	24	328,080.60	576	9,317,212.94
799,349.20	30,943	2,090,676.65	31,958	20,548,136.01	171,606	71,156,009.63

契約統計

昭和十五年度

年金額	其ノ他ノ事由ニ因ル増減		年度末現在支拂契約	
	件數	年金額	件數	年金額
126,504.50	135	18,884.37	66,606	5,070,967.10
—	88	3,973.83	10,209	1,517,486.19
126,504.50	173	22,858.20	76,815	6,588,453.29
1,735.00	—	19.61	3,122	227,286.26
1,552.28	—	.65	1,679	136,570.73
3,621.00	—	3.31	1,076	83,805.37
825.00	—	11.09	503	38,232.70
7,738.28	—	34.66	6,380	485,895.06
2,440.06	—	15.53	1,472	197,394.69
2,604.28	—	23.86	884	120,416.95
1,612.77	—	—	571	83,929.83
877.70	—	—	261	34,739.16
7,534.81	—	8.33	3,188	438,480.63
141,772.59	173	22,831.87	86,383	7,510,828.98

寡婦及廢疾者

第二十表

寡婦及廢疾原因別	前年度末現在寡婦及廢疾者契約			新 契 約			契約變更 = 由		
	件數	掛金額	年金額	件數	掛金額	年金額	件數	掛金額	
寡 婦	291	552,304.16	25,878.82	372	897,894.86	44,330.00	(7) 29	(8,518.49) 41,787.40	
心神喪失ノ 常況ニ在ル 者	男	5	7,242.63	335.00	4	5,012.13	235.00		
	女	3	4,606.46	221.71	1	2,607.70	120.00		
	計	8	11,849.09	556.71	5	7,619.83	355.00		
心神耗弱者	男	10	38,322.37	1,772.26	21	51,264.83	2,375.00	(1) 3	(559.10) 1,978.75
	女	9	25,118.09	1,138.00	25	84,708.44	3,851.00	(1) 3	(559.10) 7,074.07
	計	19	63,440.46	2,910.26	46	135,973.27	6,226.00	(1) 6	(559.10) 9,052.84
聾 者	男	4	9,740.04	450.00	25	124,715.53	5,940.00	(1) 1	(906.81) 906.61
	女	5	10,014.46	450.00	12	54,530.94	2,520.00	(1) 1	(906.81) 906.61
	計	9	19,754.50	900.00	37	179,246.47	8,460.00	(1) 1	(906.81) 906.61
疾 者	男	4	28,611.08	1,300.00	4	14,388.21	660.00	2	3,272.28
	女	—	—	—	3	4,535.96	200.00	—	—
	計	4	28,611.08	1,800.00	7	18,924.17	860.00	2	3,272.28
盲 者	男	4	4,654.10	243.25	4	7,340.64	350.00	(1) 1	(627.97) 627.97
	女	2	15,442.26	720.00	6	12,644.27	591.00	(1) 1	(627.97) 627.97
	計	6	20,096.36	963.25	10	19,984.91	941.00	(1) 1	(627.97) 627.97
者 一肢以上用 ヲ辨セサル 者	男	13	24,324.31	1,178.98	54	231,808.05	10,840.00	(1) 1	(1,950.00) 1,950.00
	女	6	55,053.62	2,599.04	27	125,679.04	5,692.00	(1) 4	(1,541.01) 21,151.89
	計	19	79,377.93	3,778.02	81	358,487.09	16,532.00	(2) 5	(3,491.01) 23,101.89
合 計	男	40	112,894.53	5,279.49	112	434,529.39	20,400.00	(3) 7	(3,472.71) 8,107.64
	女	25	110,234.89	5,128.75	74	285,706.35	12,974.00	(2) 8	(2,168.98) 23,853.95
	計	65	223,129.42	10,408.24	186	720,235.74	33,374.00	(5) 15	(5,581.69) 36,961.59
總 計	356	775,433.58	35,787.06	558	1,617,630.60	77,704.00	(12) 44	(12,100.15) 78,748.99	

備考 1. 契約變更 = 由ル成立欄中括弧内ノ数字ハ保證期間二十年ノ即時終身年金ニ變更セルモノノ再掲ナリ。
2. 死亡欄中ノ数字ハ保證期間内ニ年金受取人ノ死亡セルモノヲ示ス、而シテ之等ニ對シテハソノ殘存期間中遺

疾 年 者 統 計

昭和十五年度

ル成立	死 亡		其ノ他ノ事由ニ因ル増減			年度末現在寡婦及廢疾者契約				
	年金額	件數	掛金額	年金額	件數	掛金額	年金額	件數	掛金額	年金額
(378.70) 2,096.10	—	—	—	—	△ 2	△ 2,094.83	△ 104.47	690	1,489,391.59	71,700.45
—	—	—	—	—	—	—	—	9	12,254.76	570.00
—	—	—	—	—	—	—	—	4	7,214.16	341.71
—	—	—	—	—	—	—	—	13	19,468.92	911.71
(36.83) 106.06	—	—	—	—	—	—	—	34	91,565.95	4,253.32
340.30 446.36	—	—	—	—	—	—	—	37	116,900.62	5,329.30
—	—	—	—	—	—	—	—	71	208,466.57	9,582.62
(62.21) 52.21	—	—	—	—	—	—	—	30	135,362.18	6,442.21
—	—	—	—	—	—	3,026.76	—	17	67,572.16	2,970.00
(62.21) 52.21	—	—	—	—	—	3,026.76	—	47	202,934.34	9,412.21
249.90	—	—	—	—	—	—	—	10	46,271.57	2,209.90
—	—	—	—	—	—	—	—	3	4,535.96	200.00
249.90	—	—	—	—	—	—	—	13	50,807.53	2,409.90
—	—	—	—	—	—	—	—	8	11,994.74	593.25
(34.28) 34.28	2	5,181.50	240.00	—	—	—	—	9	28,714.50	1,345.28
34.28	2	5,181.50	240.00	—	—	—	—	17	40,709.24	1,938.53
—	—	—	—	—	—	—	—	—	—	—
(121.09) 121.09	—	—	—	—	—	—	1.20	68	258,082.36	12,141.27
(82.47) 985.91	—	—	—	—	—	—	.60	37	202,884.55	9,278.55
(203.96) 1,108.00	—	—	—	—	—	—	1.80	105	460,966.91	21,419.82
(209.93) 529.23	—	—	—	—	—	—	1.20	159	555,531.58	26,209.96
(116.75) 1,351.49	2	5,181.50	240.00	—	—	3,026.76	.60	107	427,821.95	19,464.84
(328.88) 1,890.75	2	5,181.50	240.00	—	—	3,026.76	1.80	266	983,353.51	45,674.79
(705.58) 3,986.85	2	5,181.50	240.00	△ 2	△ 931.93	△ 102.67	—	956	2,472,745.10	117,375.24

族ニ繼續シテ年金ヲ支拂フヲ以テ之ヲ年度末現在契約ニ包含セシメタリ。

新契約地方別平均

第十一表(一)

地方別	終身年金						計	
	即時		一時拂		分割拂			
	掛金額	年金額	掛金額	年金額	掛金額	年金額		
東京 東京都市 逓信局	東京	3,330.5	207.0	2,105.9	233.9	177.8	194.2	424.8
	神奈川	2,726.7	171.1	1,634.5	187.8	111.8	156.1	345.6
	計	3,239.9	201.6	2,021.6	225.6	168.9	189.0	417.4
東京地方 逓信局	新潟	1,686.9	104.6	687.2	93.6	62.0	114.8	181.0
	埼玉	1,964.4	119.4	1,026.4	114.7	114.1	139.9	98.1
	群馬	1,998.8	125.8	762.8	101.3	135.0	181.5	122.7
	千葉	2,346.1	144.1	841.5	117.2	88.2	134.9	167.7
	茨城	2,042.9	130.1	681.2	92.8	66.1	126.2	160.6
	栃木	1,494.1	92.3	718.6	95.9	85.5	133.5	132.9
	静岡	2,445.8	149.3	749.9	100.8	104.8	140.8	119.5
	山梨	2,380.2	144.6	791.4	89.3	91.0	120.2	45.1
計	2,007.4	123.9	773.6	100.9	93.7	137.5	143.0	
名古屋 逓信局	愛知	1,994.2	123.6	1,126.5	137.1	138.5	183.8	247.3
	三重	1,361.9	84.7	604.5	88.9	71.9	115.6	196.1
	岐阜	1,206.9	77.3	735.0	111.5	106.4	126.6	1,022.0
	長野	1,241.1	77.0	711.5	96.3	76.0	128.4	143.7
	福井	1,333.5	82.1	668.3	91.1	80.4	131.1	154.9
	石川	1,249.9	79.0	855.9	108.8	69.8	120.4	184.7
	富山	1,464.6	87.5	710.1	106.5	72.5	126.4	61.8
計	1,540.4	95.7	843.6	112.1	99.7	145.4	283.3	
大阪 逓信局	大阪	2,658.3	160.5	1,681.3	196.9	193.4	209.9	470.7
	京都	1,827.9	113.8	828.6	103.5	136.1	167.9	380.3
	兵庫	2,813.7	169.8	1,540.8	189.2	141.3	171.9	628.1
	奈良	1,615.0	117.6	794.4	114.1	160.0	185.5	195.4
	滋賀	1,680.3	106.2	569.5	76.7	68.6	132.0	234.2
	和歌山	1,782.4	110.5	690.2	95.3	101.8	132.7	196.6
	徳島	1,501.5	91.7	494.7	73.6	102.5	154.9	292.8
	高知	2,270.2	172.9	576.2	96.1	62.6	122.0	94.7
計	2,354.3	144.9	1,199.1	149.0	162.7	187.8	439.9	
廣島 逓信局	廣島	2,125.6	132.3	1,276.9	175.6	130.2	173.4	480.9
	鳥取	1,679.5	103.1	1,050.9	146.0	94.2	156.8	156.8
	島根	2,134.4	136.0	803.8	113.5	132.4	183.3	177.2

掛金額及平均年金額

昭和十五年度

時拂	團體年金		定期年金				計
	掛金額		一時拂		分割拂		
	年金額	掛金額	年金額	掛金額	年金額	掛金額	
41.5	54.9	7.5	682.3	172.4	72.4	138.5	114.3
36.0	146.6	19.2	574.6	151.4	53.3	123.9	126.6
41.0	59.2	8.0	662.6	168.8	68.6	135.6	116.1
23.1	108.1	14.6	544.7	145.8	45.0	112.3	107.2
13.4	15.6	1.6	498.1	132.6	65.2	123.5	117.1
13.8	24.8	2.8	468.0	133.3	50.9	119.8	114.6
19.3	3.3	0.5	525.9	138.9	50.9	121.7	117.1
18.7	3.2	0.6	465.5	131.7	49.4	115.9	113.0
17.0	4.9	0.8	493.8	138.9	47.3	114.0	107.1
13.1	6.6	0.9	513.6	141.6	60.7	122.9	117.5
7.0	3.0	0.4	544.9	149.3	50.5	122.3	116.0
17.6	25.4	3.3	505.7	138.6	53.2	119.1	113.6
29.4	44.8	5.5	589.0	154.1	70.5	131.4	88.4
23.5	27.7	3.4	498.2	130.8	57.5	115.8	86.3
116.9	41.7	5.9	508.1	138.8	66.6	133.1	83.7
17.2	29.8	4.1	499.0	137.5	63.1	123.9	102.7
15.9	23.2	3.3	471.9	132.7	57.7	122.7	81.4
23.1	16.9	2.4	492.1	129.1	61.1	120.9	92.6
8.4	17.2	2.5	475.1	123.5	67.6	134.8	91.8
33.3	37.7	4.8	525.1	140.4	66.1	127.9	89.3
49.1	42.0	4.7	774.1	193.0	97.5	153.9	134.1
37.7	71.9	14.5	653.5	159.6	70.0	128.5	118.6
74.8	349.8	42.3	919.7	217.9	98.4	157.2	146.2
27.2	3.0	0.4	454.4	123.2	69.0	117.1	119.7
23.1	11.5	1.5	482.5	134.9	62.5	120.3	103.6
19.9	33.9	4.2	638.9	165.1	75.6	139.3	129.6
28.9	29.7	3.6	484.8	129.3	72.6	135.3	112.9
11.4	7.3	1.1	667.5	177.8	65.3	126.1	121.4
46.6	146.0	18.0	739.2	183.0	89.4	147.1	132.4
51.8	37.6	4.7	811.8	201.2	83.6	155.5	147.9
22.3	17.1	2.3	629.8	180.4	86.9	142.3	143.5
22.0	3.6	0.6	552.8	144.3	63.6	132.8	132.1

(續) 新契約地方別平均

第十一表(二)

地方別	終身		年		金		掛金額	
	即時		一時拂		分割拂			
	掛金額	年金額	掛金額	年金額	掛金額	年金額		
廣島信局	岡山	1,796.7	115.2	959.8	138.1	120.9	183.5	192.8
	山口	1,983.9	130.3	834.8	117.7	87.8	139.7	442.2
	香川	1,884.7	125.0	892.4	123.8	110.7	164.1	623.1
	愛媛	1,958.7	123.1	922.2	139.6	81.4	140.3	210.0
	計	1,985.6	126.2	993.0	140.2	109.4	162.7	289.4
熊本信局	熊本	2,467.6	144.7	1,117.1	152.1	103.7	148.6	119.1
	長崎	2,378.7	147.4	1,334.2	171.6	95.9	147.4	149.4
	福岡	2,823.2	175.3	1,705.3	188.0	170.9	182.0	259.8
	大分	2,279.9	144.4	1,049.2	141.4	94.2	150.7	127.5
	佐賀	1,685.1	110.3	812.2	144.7	79.6	120.2	60.8
	宮崎	1,641.1	99.5	718.1	109.0	97.6	141.4	—
	鹿兒島	1,778.5	114.9	976.3	123.1	98.5	147.6	43.3
	沖繩	1,721.5	107.3	696.0	109.6	167.8	201.6	316.7
計	2,373.0	147.4	1,254.9	156.8	127.6	161.7	201.6	
仙臺信局	宮城	2,298.3	140.0	947.7	124.6	135.3	206.1	254.5
	福島	2,579.1	158.6	1,013.8	139.3	107.0	160.2	487.6
	岩手	1,708.3	107.2	924.4	127.6	98.4	146.0	100.8
	青森	2,258.6	134.6	1,003.1	129.2	160.6	192.7	95.1
	山形	1,680.1	103.5	666.6	92.6	132.6	219.4	251.2
	秋田	2,167.9	135.9	1,550.6	199.4	122.0	152.8	332.6
計	2,221.6	135.9	995.8	133.6	121.5	175.7	274.9	
札内	札内	4,313.4	271.6	2,051.7	243.8	130.2	191.2	407.7
地計	2,383.5	148.1	1,180.2	146.4	140.1	172.3	367.9	
臺灣	臺灣	8,039.5	546.7	3,390.6	373.3	463.4	472.1	144.0
	南洋	3,020.7	177.1	2,639.2	269.4	243.2	255.7	585.4
關東	關東	—	—	2,326.0	216.7	265.4	323.4	586.5
	州	11,344.7	800.0	2,612.3	369.1	149.4	340.0	40.0
滿洲	滿洲	—	—	6,613.5	694.5	218.3	234.3	—
	其他	—	—	—	—	—	—	—
總計	2,397.7	149.0	1,190.8	147.4	141.6	173.8	370.8	

掛金額及平均年金額

昭和十五年度

時拂	團體年金		定期貯蓄年金		計
	年金額		年金額		
	掛金額	年金額	掛金額	年金額	
32.8	3.2	5.5	523.8	136.3	128.3
42.5	63.3	7.2	706.6	184.7	127.1
53.7	32.6	4.6	663.3	170.1	130.9
22.8	11.5	2.0	734.1	186.9	140.0
32.4	39.4	4.9	682.9	175.6	136.8
11.5	311.6	28.9	627.2	170.5	143.1
21.1	25.1	3.4	735.2	194.4	151.7
26.6	29.3	3.9	746.4	193.9	166.1
15.6	7.1	1.1	656.8	175.5	152.3
8.3	—	—	744.6	198.2	156.4
—	—	—	625.6	162.9	141.6
6.8	—	—	579.6	152.6	136.9
30.8	3.4	.5	756.8	194.1	148.6
22.0	66.8	7.0	689.8	181.6	154.5
32.1	4.1	.6	791.4	188.2	118.3
57.4	10.2	1.1	729.9	181.2	147.8
12.5	5.8	1.3	664.4	156.0	138.1
12.2	9.9	1.2	597.6	148.8	106.9
33.0	17.3	2.2	585.9	151.6	120.9
30.0	4.8	.8	807.2	207.2	182.7
33.8	8.1	1.0	714.6	177.4	136.5
41.2	8.2	1.1	867.2	213.6	193.4
39.2	67.9	8.7	641.9	165.3	121.2
18.9	—	—	1,060.7	218.4	295.9
62.9	31.8	3.9	1,023.2	250.1	169.5
51.6	8.2	1.0	402.5	112.3	113.1
5.9	—	—	1,282.9	266.7	368.7
—	—	—	—	—	418.4
—	—	—	—	115.1	300.0
39.5	67.6	8.7	643.0	165.5	121.6

第十二表 (イ) 男 女 別

Table with columns for gender (男女別), contract type (新契約), and current status (年度末現在契約). It includes sub-sections for '即時年金種類及保證期間別' and '種類及新契約'.

(ロ) 年金種類別

Table showing annuity types (年金種類別) and their distribution between new contracts (新契約) and current contracts (年度末現在契約).

新契約及現在契

(ハ) 即時年金種類及保證期間別

約件數百分比

(ホ) 据置年金支拂開始年齢別

Table showing the percentage distribution of annuity contracts by age at start (支拂開始年齢別) for new contracts and current contracts.

(ヘ) 年金額別

Table showing the distribution of annuity contracts by amount (年金額別) for new contracts and current contracts.

年金種別

昭和十五年度

地方別及年金種別	死亡率		解約率		法定解除率		
	件数	掛金額	件数	掛金額	件数	掛金額	
東京都市 逓信局	終身年金	.01025	.01129	.01041	.00564	(.01291) .01144	.00900
	團體年金	.00253	.00835	.00821	.00619	—	—
	定期年金	.00694	.00441	.00406	.00305	(.01187) .01166	.01056
	計	.00852	.01025	.00784	.00490	(.01210) .01155	.00976
東京地方 逓信局	終身年金	.00907	.01238	.00639	.00367	(.01144) .01006	.00874
	團體年金	.00204	.00234	.00853	.00508	—	—
	定期年金	.00787	.00531	.00344	.00225	(.00888) .00888	.00762
	計	.00860	.01125	.00566	.00330	(.01018) .00951	.00817
名古屋 逓信局	終身年金	.01087	.01448	.00526	.00314	(.00541) .00454	.00463
	團體年金	.00319	.00115	.00802	.00420	—	—
	定期年金	.00753	.00627	.00405	.00212	(.01122) .01121	.00822
	計	.00984	.01343	.00539	.00297	(.00897) .00611	.00577
大阪 逓信局	終身年金	.01081	.01615	.00661	.00441	(.01039) .01345	.01587
	團體年金	.00340	.01261	.03004	.00629	—	—
	定期年金	.00669	.00541	.00471	.00181	(.02290) .02255	.01712
	計	.00972	.01460	.00789	.00385	(.01228) .01665	.01640
廣島 逓信局	終身年金	.01007	.01701	.00787	.00510	(.01405) .01130	.00853
	團體年金	.00371	.00715	.04996	.03684	—	—
	定期年金	.00587	.00478	.00473	.00183	(.02019) .02018	.01590
	計	.00943	.01559	.00857	.00455	(.01390) .01320	.01100
熊本 逓信局	終身年金	.00992	.01036	.00924	.00521	(.02998) .02342	.02275
	團體年金	.00378	.09630	.03594	.01168	—	—
	定期年金	.00635	.00337	.00645	.00340	(.02384) .02393	.02044
	計	.00925	.00962	.00912	.00473	(.02719) .02356	.02186
仙臺 逓信局	終身年金	.00915	.01748	.00509	.00475	(.01257) .01024	.01011
	團體年金	—	—	.01430	.01099	—	—
	定期年金	.00829	.00522	.00441	.00330	(.01877) .01876	.01686
	計	.00899	.01614	.00513	.00447	(.01349) .01126	.01134
札幌 逓信局	終身年金	.01110	.02079	.01073	.00623	(.00783) .00678	.00498
	團體年金	.00271	.00430	.01879	.02328	—	—
	定期年金	.00498	.00175	.01142	.00343	(.02284) .02284	.02241
	計	.01022	.01904	.01101	.00578	(.01087) .00948	.00927

別 減 率

昭和十五年度

地方別及年金種別	死亡率		解約率		法定解除率		
	件数	掛金額	件数	掛金額	件数	掛金額	
内地計	終身年金	.01017	.01421	.00717	.00457	(.01396) .01173	.01126
	團體年金	.00296	.01120	.01664	.00683	—	—
	定期年金	.00704	.00487	.00447	.00251	(.01433) .01487	.01296
	計	.00326	.01296	.00716	.00411	(.01432) .01282	.01196
臺灣	終身年金	.00981	.00343	.00318	.00036	(.01533) .01351	.01807
	團體年金	—	—	—	—	—	—
	定期年金	.00692	.01227	.00692	.00128	(.02567) .02597	.01483
	計	.00945	.00430	.00367	.00051	(.01877) .01701	.01678
神戶	終身年金	.00418	.00074	.01115	.00182	(.01074) .00936	.01338
	團體年金	—	—	—	—	—	—
	定期年金	.00560	.00189	.00281	.00063	(.01038) .01034	.01414
	計	.00408	.00085	.00756	.00156	(.01058) .00976	.01370
南洋	終身年金	—	—	—	—	(.03588) .03509	.01185
	團體年金	—	—	—	—	—	—
	定期年金	.00435	.00129	—	—	—	—
	計	.00232	.00053	—	—	(.00895) .00988	.00610
關東州	終身年金	.00977	.00138	.01349	.00327	(.00170) .00104	.00034
	團體年金	—	—	—	—	—	—
	定期年金	.03448	.00825	—	—	(.03822) .03922	.01698
	計	.01015	.00151	.01313	.00317	(.00329) .00204	.00114
滿洲國	終身年金	—	—	.03509	.30233	(.05405)	.01455
	團體年金	—	—	—	—	—	—
	定期年金	—	—	—	—	—	—
	計	—	—	.03390	.30199	(.05129) .05128	.01424
其ノ他	終身年金	—	—	—	—	—	—
	團體年金	—	—	—	—	—	—
	定期年金	—	—	—	—	—	—
	計	—	—	—	—	—	—
總計	終身年金	.01016	.01408	.00719	.00470	(.01382) .01167	.01125
	團體年金	.00293	.01110	.01651	.00677	—	—
	定期年金	.00704	.00487	.00446	.00250	(.01484) .01483	.01292
	計	.00924	.01285	.00717	.00420	(.01422) .01277	.01193

備考 本表ノ消滅率ノ算出方法ニ就キテハ本書「例言」中ニ記載セル處ナルカ「法定解除率」欄中ニ括弧ヲ附シタルモノハ分割拂現在契約數ヨリ掛金拂済契約ニ變更セルモノヲ控除セル年度始及年度末現在契約數ヲ以テ算出セルモノナリ。

地方別人口一萬

第十四表

地方別	人口	年度末現在契約		人口一萬人當		
		件数	年金額	件数	年金額	
東京 東京都市 逓信局	東京	7,354,971	94,977	11,045,561.93	129.18	15,017.8
	神奈川	2,188,974	20,734	2,287,703.35	94.72	10,451.0
	計	9,543,945	115,711	13,333,265.28	121.24	13,970.4
東京地方 逓信局	新潟	2,064,402	20,984	1,634,641.24	101.65	7,918.2
	埼玉	1,608,039	14,649	1,401,247.75	91.10	8,714.0
	群馬	1,299,027	11,379	1,079,375.21	87.60	8,309.1
	千葉	1,588,425	12,200	1,164,379.32	76.81	7,330.4
	茨城	1,620,000	11,626	1,017,885.51	71.77	6,283.2
	栃木	1,206,657	11,378	1,038,831.26	94.29	8,609.2
	静岡	2,017,860	21,702	1,910,442.95	107.55	9,467.7
	山梨	663,026	5,051	427,721.75	76.18	6,451.1
計	12,067,436	108,969	9,674,524.99	90.30	8,017.1	
名古屋 逓信局	愛知	3,166,592	38,215	3,083,766.00	120.72	9,741.5
	三重	1,198,783	17,560	1,150,687.13	146.48	9,598.8
	岐阜	1,265,024	16,402	1,089,143.93	129.66	8,609.7
	長野	1,710,729	16,927	1,275,911.39	98.95	7,458.3
	福井	643,904	8,297	551,508.87	128.85	8,565.1
	石川	757,676	8,231	612,553.46	108.63	8,084.6
	富山	822,569	7,687	531,991.64	93.45	6,467.4
計	9,565,277	113,319	8,295,562.42	118.47	8,672.6	
大阪 逓信局	大阪	4,792,966	50,900	5,010,699.84	106.20	10,454.3
	京都	1,729,993	25,414	2,094,023.93	146.90	12,104.2
	兵庫	3,221,232	35,793	3,640,962.27	111.12	11,303.0
	奈良	620,509	5,096	375,008.75	82.13	6,043.6
	滋賀	703,679	8,100	490,672.59	115.11	6,973.0
	和歌山	865,074	8,318	706,124.05	96.15	8,162.6
	徳島	718,717	5,730	416,241.30	79.73	5,791.4
	高知	709,286	5,167	436,843.38	72.85	6,158.9
	計	13,361,456	144,518	13,170,576.11	108.16	9,857.1
	広島	1,869,504	17,063	1,628,919.78	91.27	8,713.1
鳥取	484,390	4,595	426,306.76	94.86	8,800.9	
島根	740,940	5,475	432,586.98	73.89	5,838.4	

人當現在契約

昭和十五年度

地方別	人口	年度末現在契約		人口一萬人當		
		件数	年金額	件数	年金額	
廣島 逓信局	岡山	1,329,358	10,058	893,996.79	75.66	6,725.0
	山口	1,294,242	10,500	931,704.00	81.13	7,198.8
	香川	730,394	7,117	641,792.91	97.44	8,786.9
	愛媛	1,178,705	8,166	770,129.27	69.28	6,533.7
	計	7,627,533	62,974	5,725,436.49	82.56	7,506.3
熊本 逓信局	熊本	1,368,179	8,147	812,721.78	59.55	5,940.2
	長崎	1,370,063	9,521	948,322.32	69.49	6,921.7
	福岡	3,094,132	22,284	2,443,590.51	72.02	7,897.5
	大分	972,975	7,676	795,907.33	78.89	8,180.1
	計	7,805,359	67,628	6,000,342.34	76.85	7,839.5
鹿島 逓信局	佐賀	701,517	4,228	407,295.38	60.27	5,805.9
	宮崎	840,357	4,342	416,390.00	51.67	4,954.9
	鹿児島	1,589,467	7,570	616,644.05	47.63	3,879.6
	沖縄	574,579	1,965	190,829.13	34.20	3,321.2
	計	10,511,239	65,733	6,631,700.50	62.54	6,309.1
仙臺 逓信局	宮城	1,271,238	9,369	773,680.32	73.70	6,086.0
	福島	1,625,521	12,843	1,180,618.06	79.01	7,263.0
	岩手	1,095,793	6,458	555,995.42	58.93	5,073.9
	青森	1,000,509	5,567	465,379.53	55.64	4,651.4
	計	7,164,674	50,182	4,219,726.44	70.04	5,889.6
札幌 逓信局	北海道	3,272,718	18,513	2,230,359.28	58.57	6,815.0
	計	73,114,308	679,919	63,281,151.51	92.99	8,655.1
臺灣	臺灣	5,872,084	1,242	178,648.49	2.12	304.2
	計	414,891	1,722	254,029.93	41.50	6,122.8
南洋	南洋	80,389	616	85,805.25	76.63	10,673.8
	計	197,310	1,569	169,992.02	8.00	890.6
滿洲	滿洲	1,804,483	32	8,286.65	—	—
	計	—	15	5,950.00	—	—
其他	—	—	—	—	—	—
總計	81,483,465	685,115	63,983,863.85	84.08	7,852.4	

備考 本表中人口=就キテハ第一編第十八表ノ備考参照ノコト。

收支計算累年比較

(郵便年金特別會計)

第十五表

Table with 6 columns: 種別, 昭和十五年度, 昭和十四年度, 昭和十三年度, 昭和十二年度, 昭和十一年度. Rows include 前年度末積立金, 収入掛金, 運用収入, 雑収入, 事業費, 支拂年金, 返還金, 年度末積立金.

積立金運用状況

第十六表

Table with 6 columns: 運用種別, 昭和十五年度末現在, 昭和十四年度末現在, 昭和十三年度末現在, 昭和十二年度末現在, 昭和十一年度末現在. Rows include 公共團體放資, 證書貸付, 地方債証券, 國債, 社債及債券, 其ノ他ノ有價証券, 契約者貸付, 預金部預金及現金.

備考 1. 昭和十五年度末積立金總額ハ 270,395,609.794 ナルモ右ハ同年度收支決算ノ關係上昭和十六年五月末ニ於テ始メテ積立金トシテ運用シ得ルニ至ルモノナルヲ以テ本表ニハ昭和十四年度末積立金ニ依リ之ヲ計上セリ。以下各年度之ニ準セリ。

2. 本表中「證書貸付」ハ地方自治團體ニ對スル貸付ナリ。

積立金地方別公共貸付状況

第十七表

Table with 6 columns: 地方別, 昭和十五年度末現在, 昭和十四年度末現在, 昭和十三年度末現在, 昭和十二年度末現在, 昭和十一年度末現在. Rows list various prefectures and branches like 神奈川, 新潟, 東京支局, etc.

備考 本表中昭和十一年度末現在額カ第十六表ノ公共團體放資(證書貸付)ト吻合セサルハ本表現在額中ニハ借主ヨリ拂込済ニ係ル償還金ニシテ末々積立金ニ戻入セサル金額 8,205.82 ヲ包含スル爲ナリ。

積立金事業別公共貸付状況

第十八表

貸付種別	昭和十五年度		昭和十四年度		昭和十三年度		昭和十二年度		昭和十一年度	
	末	現在	末	現在	末	現在	末	現在	末	現在
社會事業施設	共同宿泊所	143,265.19	146,494.67	152,751.15	158,747.04	164,493.19				
	小賣市場	31,167.58	33,224.58	34,220.72	37,085.11	38,000.00				
	療養所	—	—	—	—	9,600.00				
	貸住店	58,001.59	45,465.18	46,828.33	50,748.04	52,000.00				
	計	135,467.12	1,156.12	1,673.02	1,996.96	2,153.02				
保健衛生施設	傳染病院	61,400.00	61,400.00	61,400.00	61,400.00	—				
	汚物掃除施設	204,863.93	210,000.00	210,000.00	210,000.00	—				
	上海水浴更衣場	1,987,285.31	2,117,472.82	1,899,681.04	794,264.81	143,063.87				
	海水浴場敷地買収費	30,998.62	33,364.65	35,621.07	38,811.24	40,815.35				
	温泉浴場	4,045.54	7,903.61	11,582.96	15,091.86	18,486.20				
	公設火葬場	106,419.54	110,000.00	—	—	—				
	計	2,395,012.94	2,540,141.08	2,218,285.07	1,119,567.91	202,317.42				
教育施設	公立中等學校	1,176,750.06	1,205,000.00	505,000.00	290,000.00	—				
	國民學校	646,157.17	584,204.55	597,426.21	605,275.58	85,619.73				
	青年學校	141,945.82	117,000.00	117,000.00	117,000.00	—				
計	1,964,853.05	1,906,204.55	1,219,426.21	1,012,275.58	85,619.73					
産業施設	災害荒地林地復舊	—	—	—	—	36,600.00				
	土地購入	4,204.47	4,699.06	5,398.32	5,837.61	6,049.56				
	工場用水供給	—	—	—	561.88	1,646.47				
	果園雪害復舊	709.10	709.10	924.15	1,129.35	1,511.98				
	魚市場	—	—	—	18,944.19	21,177.89				
土木事業施設	家畜市場	448,035.90	448,035.90	475,423.80	488,276.85	500,600.00				
	計	452,949.47	453,444.06	481,746.27	514,749.88	567,555.90				
	土木事業	53,079.88	59,888.96	66,382.61	72,575.45	78,481.39				
	河川改修	90,890.51	90,983.90	91,164.16	7,257.49	17,518.27				
	港灣修築	409,547.72	421,998.81	359,689.33	3,419.00	3,500.00				
	道路修築	—	—	—	289,292.14	304,807.85				
	災害復舊道路及河川改修	—	—	—	—	14,500.00				
	都市計畫街路及運河築造費負擔金	42,940.65	44,000.00	44,000.00	44,000.00	44,000.00				
	災害復舊區劃整理	160,929.85	164,900.00	164,900.00	164,900.00	164,900.00				
	市埠頭陸上設備	357,243.67	366,200.00	—	—	—				
計	1,114,632.28	1,147,971.67	726,136.10	581,444.08	627,707.51					
其他施設	基本財産造成費	9,476.71	12,376.17	15,154.86	17,817.82	20,369.86				
	市町村廳舎	171,738.09	180,102.32	188,118.16	—	—				
	國民學校敷地買収及傳染病預防事業	26,295.55	28,918.52	34,000.00	34,000.00	34,000.00				
	道路下水道及棧橋	12,161.67	12,461.70	13,324.44	13,600.00	13,600.00				
	農學研究所建設費寄附金	29,470.83	30,000.00	—	—	—				
其他施設	公營自動車事業	14,735.41	—	—	—	—				
	計	263,878.26	263,858.71	250,597.46	65,417.82	67,969.86				
合計	6,559,227.48	6,537,960.62	5,131,664.33	3,542,032.42	1,817,446.63					

附

録

備考 本表中昭和十一年度末現在額が第十六表ノ公共團體放資(證書貸付)ト吻合セザル理由ニ就キテハ第十七表ノ備考参照ノコト。

簡易生命保險基礎死亡生殘表

第一表 (小兒保險並=昭和十三年九月三十日以前締結ノ成人保險=對スルモノ)

年 齡	生 殘 數	死 亡 數	死 亡 率	年 齡	生 殘 數	死 亡 數	死 亡 率
0	100,000	18,823	.188230	51	45,098	1,021	.022640
1	81,177	3,591	.044237	52	44,077	1,063	.024117
2	77,586	2,412	.031088	53	43,014	1,105	.025689
3	75,174	1,534	.020406	54	41,909	1,151	.027464
4	73,640	989	.013430	55	40,758	1,197	.029368
5	72,651	686	.009442	56	39,561	1,246	.031496
6	71,965	505	.007017	57	38,315	1,295	.033799
7	71,460	407	.005695	58	37,020	1,345	.036332
8	71,053	351	.004940	59	35,675	1,394	.039075
9	70,702	309	.004370	60	34,281	1,442	.042064
10	70,393	280	.003978	61	32,839	1,489	.045342
11	70,113	266	.003794	62	31,350	1,533	.048900
12	69,847	266	.003808	63	29,817	1,573	.052755
13	69,581	296	.004254	64	28,244	1,609	.056968
14	69,285	344	.004965	65	26,635	1,637	.061460
15	68,941	393	.005701	66	24,998	1,656	.066245
16	68,548	453	.006609	67	23,342	1,667	.071416
17	68,095	517	.007592	68	21,675	1,668	.076955
18	67,578	578	.008553	69	20,007	1,659	.082921
19	67,000	628	.009373	70	18,348	1,639	.089329
20	66,372	661	.009959	71	16,709	1,608	.096236
21	65,711	678	.010318	72	15,101	1,566	.103702
22	65,033	681	.010472	73	13,535	1,510	.111563
23	64,352	672	.010443	74	12,025	1,441	.119834
24	63,680	654	.010270	75	10,584	1,365	.12897
25	63,026	634	.010059	76	9,219	1,281	.13895
26	62,392	612	.009809	77	7,938	1,188	.14966
27	61,780	593	.009599	78	6,750	1,088	.16119
28	61,187	579	.009463	79	5,662	983	.17361
29	60,608	571	.009421	80	4,679	875	.18701
30	60,037	567	.009444	81	3,804	766	.20137
31	59,470	567	.009534	82	3,038	659	.21692
32	58,903	571	.009694	83	2,379	556	.23371
33	58,332	577	.009892	84	1,823	459	.25178
34	57,755	586	.010146	85	1,364	370	.27126
35	57,169	596	.010425	86	994	290	.29175
36	56,573	608	.010747	87	704	221	.31392
37	55,965	623	.011132	88	483	164	.33954
38	55,342	638	.011528	89	319	116	.36364
39	54,704	656	.011992	90	203	80	.39409
40	54,048	675	.012489	91	123	52	.42276
41	53,373	696	.013040	92	71	32	.45070
42	52,677	719	.013649	93	39	19	.48718
43	51,958	744	.014319	94	20	11	.55000
44	51,214	773	.015094	95	9	5	.55556
45	50,441	804	.015939	96	4	2	.50000
46	49,637	836	.016842	97	2	1	.50000
47	48,801	871	.017848	98	1	1	1.00000
48	47,930	907	.018923				
49	47,023	944	.020075				
50	46,079	981	.021290				

備考 本表ハ明治四十五年内閣統計局ノ發表シタル第二表ノ男子死亡率ニ二割ヲ増加シテ作成シタルモノナリ。

簡易生命保険経験死亡生残表

第二表 (昭和十三年十月一日以降締結ノ成人保険ニ對スルモノ)

Table with 8 columns: 年齢 (Age), 生残數 (Survivors), 死亡數 (Deaths), 死亡率 (Mortality Rate), 年齢 (Age), 生残數 (Survivors), 死亡數 (Deaths), 死亡率 (Mortality Rate). Rows range from age 12 to 101.

備考 本表ハ昭和五年四月ヨリ昭和十年三月ニ至ル五ケ年間ノ簡易生命保険経験死亡率ヲ基礎トシテ作成シタルモノナリ。

成人保険金額表

第三表

■保険料月額十銭ノ場合■

Table with 10 columns: 加入年齢 (Entry Age), 終身保険 (Life Insurance), 養老保険 (Annuity Insurance), 十五年滿期 (15-year maturity), 二十年滿期 (20-year maturity), 三十年滿期 (30-year maturity), 四十年滿期 (40-year maturity). Rows range from age 12 to 60.

備考 本表ハ昭和十三年十月一日以降ノ契約ニ使用ノモノナリ。

兒童保險金額表

第四表

保 險 種 類	加 入 年 齡	保險料月額一圓ニ對スル保險金額												保險料月額七十						
		被保險者死亡ノ場合ニ支拂フヘキ保險金額												被保險者死亡ノ場						
		滿期保險金額	二歲未滿	三歲未滿	四歲未滿	五歲未滿	六歲未滿	七歲未滿	八歲未滿	九歲未滿	十歲未滿	十未一歲滿	十未二歲滿	十以二歲上	滿期保險金額	二歲未滿	三歲未滿	四歲未滿	五歲未滿	六歲未滿
十五 年 滿 期	1	188	50	50	60	80	100	120	140	160	180	188	188	132	35	35	42	56	70	十五 年 滿 期
	2	190	50	50	60	80	100	120	140	160	180	190	190	133	35	35	42	56	70	
	3	190	50	50	60	80	100	120	140	160	180	190	190	133	35	35	42	56	70	
	4	190	50	50	60	80	100	120	140	160	180	190	190	134	35	35	42	56	70	
	5	190	50	50	60	80	100	120	140	160	180	190	190	134	35	35	42	56	70	
	6	190	50	50	60	80	100	120	140	160	180	190	190	134	35	35	42	56	70	
	7	190	50	50	60	80	100	120	140	160	180	190	190	134	35	35	42	56	70	
	8	190	50	50	60	80	100	120	140	160	180	190	190	133	35	35	42	56	70	
	9	190	50	50	60	80	100	120	140	160	180	190	190	133	35	35	42	56	70	
	10	188	50	50	60	80	100	120	140	160	180	188	188	132	35	35	42	56	70	
	11	188	50	50	60	80	100	120	140	160	180	188	188	131	35	35	42	56	70	
	12	186	50	50	60	80	100	120	140	160	180	186	186	130	35	35	42	56	70	
二十 年 滿 期	1	276	50	50	60	80	100	120	140	160	180	200	276	194	35	35	42	56	70	二十 年 滿 期
	2	278	50	50	60	80	100	120	140	160	180	200	278	194	35	35	42	56	70	
	3	276	50	50	60	80	100	120	140	160	180	200	276	194	35	35	42	56	70	
	4	276	50	50	60	80	100	120	140	160	180	200	276	193	35	35	42	56	70	
	5	274	50	50	60	80	100	120	140	160	180	200	274	192	35	35	42	56	70	
	6	274	50	50	60	80	100	120	140	160	180	200	274	191	35	35	42	56	70	
	7	272	50	50	60	80	100	120	140	160	180	200	272	190	35	35	42	56	70	
	8	270	50	50	60	80	100	120	140	160	180	200	270	189	35	35	42	56	70	
	9	268	50	50	60	80	100	120	140	160	180	200	268	187	35	35	42	56	70	
	10	266	50	50	60	80	100	120	140	160	180	200	266	186	35	35	42	56	70	
	11	264	50	50	60	80	100	120	140	160	180	200	264	184	35	35	42	56	70	
	12	260	50	50	60	80	100	120	140	160	180	200	260	183	35	35	42	56	70	
二十 歲 滿 期	1	258	50	50	60	80	100	120	140	160	180	200	258	181	35	35	42	56	70	二十 歲 滿 期
	2	242	50	50	60	80	100	120	140	160	180	200	242	178	35	35	42	56	70	
	3	224	50	50	60	80	100	120	140	160	180	200	224	172	35	35	42	56	70	
	4	208	50	50	60	80	100	120	140	160	180	200	208	166	35	35	42	56	70	
	5	190	50	50	60	80	100	120	140	160	180	190	190	160	35	35	42	56	70	
	6	176	50	50	60	80	100	120	140	160	176	176	176	154	35	35	42	56	70	
	7	160	50	50	60	80	100	120	140	160	160	160	160	148	35	35	42	56	70	
	8	146	50	50	60	80	100	120	140	146	146	146	146	132	35	35	42	56	70	

備考 1. 保險料月額五十錢ニ對スル保險金額ハ一圓ニ對スルモノノ二分ノ一、一圓五十錢ニ對スルモノハ一倍半トス。
 2. 『被保險者死亡ノ場合ニ支拂フヘキ保險金額』欄ニ於ケル年齢ハ被保險者ノ死亡年齢ヲ示シ滿年ヲ以テ算出スルモノトス。

兒童保險金額表

保 險 種 類	加 入 年 齡	保險料月額三十錢ニ對スル保險金額												保險料月額七十						
		被保險者死亡ノ場合ニ支拂フヘキ保險金額												被保險者死亡ノ場						
		滿期保險金額	二歲未滿	三歲未滿	四歲未滿	五歲未滿	六歲未滿	七歲未滿	八歲未滿	九歲未滿	十歲未滿	十未一歲滿	十未二歲滿	十以二歲上	滿期保險金額	二歲未滿	三歲未滿	四歲未滿	五歲未滿	六歲未滿
十五 年 滿 期	1	84	98	112	126	132	132	132	132	132	132	132	55	20	20	25	30	40	50	十五 年 滿 期
	2	84	98	112	126	133	133	133	133	133	133	133	56	20	20	25	30	40	50	
	3	84	98	112	126	134	134	134	134	134	134	134	56	20	20	25	30	40	50	
	4	84	98	112	126	134	134	134	134	134	134	134	56	20	20	25	30	40	50	
	5	84	98	112	126	134	134	134	134	134	134	134	56	20	20	25	30	40	50	
	6	84	98	112	126	134	134	134	134	134	134	134	56	20	20	25	30	40	50	
	7	84	98	112	126	133	133	133	133	133	133	133	56	20	20	25	30	40	50	
	8	84	98	112	126	133	133	133	133	133	133	133	56	20	20	25	30	40	50	
	9	84	98	112	126	132	132	132	132	132	132	132	56	20	20	25	30	40	50	
	10	84	98	112	126	132	132	132	132	132	132	132	56	20	20	25	30	40	50	
	11	84	98	112	126	131	131	131	131	131	131	131	56	20	20	25	30	40	50	
	12	84	98	112	126	130	130	130	130	130	130	130	56	20	20	25	30	40	50	
二十 年 滿 期	1	84	98	112	126	140	140	140	140	140	140	194	81	20	20	25	30	40	50	二十 年 滿 期
	2	84	98	112	126	140	140	140	140	140	140	194	81	20	20	25	30	40	50	
	3	84	98	112	126	140	140	140	140	140	140	194	81	20	20	25	30	40	50	
	4	84	98	112	126	140	140	140	140	140	140	193	81	20	20	25	30	40	50	
	5	84	98	112	126	140	140	140	140	140	140	192	81	20	20	25	30	40	50	
	6	84	98	112	126	140	140	140	140	140	140	191	81	20	20	25	30	40	50	
	7	84	98	112	126	140	140	140	140	140	140	190	81	20	20	25	30	40	50	
	8	84	98	112	126	140	140	140	140	140	140	189	80	20	20	25	30	40	50	
	9	84	98	112	126	140	140	140	140	140	140	187	80	20	20	25	30	40	50	
	10	84	98	112	126	140	140	140	140	140	140	186	79	20	20	25	30	40	50	
	11	84	98	112	126	140	140	140	140	140	140	184	79	20	20	25	30	40	50	
	12	84	98	112	126	140	140	140	140	140	140	183	78	20	20	25	30	40	50	
二十 歲 滿 期	1	84	98	112	126	140	140	140	140	140	140	181	78	20	20	25	30	40	50	二十 歲 滿 期
	2	84	98	112	126	140	140	140	140	140	140	180	78	20	20	25	30	40	50	
	3	84	98	112	126	140	140	140	140	140	140	179	78	20	20	25	30	40	50	
	4	84	98	112	126	140	140	140	140	140	140	178	78	20	20	25	30	40	50	
	5	84	98	112	126	140	140	140	140	140	140	177	78	20	20	25	30	40	50	
	6	84	98	112	126	140	140	140	140	140	140	176	78	20	20	25	30	40	50	
	7	84	98	112	126	140	140	140	140	140	140	175	78	20	20	25	30	40	50	
	8	84	98	112	126	140	140	140	140	140	140	174	78	20	20	25	30	40	50	

モノトス。

郵便年金基金

(即時終身年金及据置)

第五表(一)

年 齢	男			女		
	生 殘 數	死 亡 數	死 亡 率	生 殘 數	死 亡 數	死 亡 率
0	100,000	12,549	.125490	100,000	9,864	.098640
1	87,451	2,579	.029491	90,136	2,270	.025184
2	84,872	1,759	.020725	87,866	1,600	.018210
3	83,113	1,130	.013596	86,266	1,046	.012125
4	81,983	734	.008953	85,220	697	.008179
5	81,249	512	.006302	84,523	479	.005667
6	80,737	378	.004682	84,044	351	.004176
7	80,359	305	.003795	83,693	282	.003369
8	80,054	264	.003298	83,411	246	.002949
9	79,790	232	.002908	83,165	228	.002742
10	79,558	211	.002652	82,937	219	.002641
11	79,347	201	.002533	82,718	223	.002696
12	79,146	201	.002540	82,495	243	.002946
13	78,945	224	.002837	82,252	277	.003368
14	78,721	261	.003316	81,975	319	.003891
15	78,460	298	.003798	81,656	365	.004470
16	78,162	345	.004414	81,291	412	.005068
17	77,817	394	.005063	80,879	456	.005638
18	77,423	442	.005709	80,423	493	.006130
19	76,981	481	.006248	79,930	520	.006506
20	76,500	508	.006641	79,410	536	.006750
21	75,992	523	.006882	78,874	544	.006897
22	75,469	526	.006970	78,330	545	.006958
23	74,943	522	.006965	77,785	542	.006968
24	74,421	510	.006853	77,243	538	.006965
25	73,911	495	.006697	76,705	533	.006949
26	73,416	480	.006538	76,172	528	.006932
27	72,936	467	.006403	75,644	524	.006927
28	72,469	457	.006306	75,120	521	.006936
29	72,012	452	.006277	74,599	519	.006957
30	71,560	451	.006302	74,080	518	.006992
31	71,109	452	.006356	73,562	518	.007042
32	70,657	457	.006468	73,044	520	.007119
33	70,200	463	.006595	72,524	523	.007211
34	69,737	471	.006754	72,001	528	.007333
35	69,266	482	.006959	71,473	534	.007471
36	68,784	493	.007167	70,939	540	.007612
37	68,291	506	.007409	70,399	545	.007742
38	67,785	521	.007686	69,854	548	.007845
39	67,264	538	.007998	69,306	549	.007921
40	66,726	555	.008318	68,757	548	.007970
41	66,171	575	.008690	68,209	544	.007975
42	65,596	597	.009101	67,665	539	.007966
43	64,999	621	.009554	67,126	533	.007940
44	64,378	648	.010066	66,593	530	.007959
45	63,730	677	.010623	66,063	531	.008038
46	63,053	708	.011229	65,532	537	.008194
47	62,345	742	.011902	64,995	548	.008431
48	61,603	777	.012613	64,447	564	.008751
49	60,826	814	.013382	63,883	586	.009173
50	60,012	852	.014197	63,297	611	.009653
51	59,160	893	.015095	62,686	640	.010210
52	58,267	936	.016064	62,046	671	.010815
53	57,331	982	.017129	61,375	703	.011454
54	56,349	1,031	.018297	60,672	739	.012180
55	55,318	1,083	.019578	59,933	777	.012964

礎 死 亡 生 殘 表

終身年金=對スルモノ)

年 齢	男			女		
	生 殘 數	死 亡 數	死 亡 率	生 殘 數	死 亡 數	死 亡 率
56	54,235	1,138	.020983	59,156	819	.013845
57	53,097	1,196	.022525	58,337	865	.014828
58	51,901	1,257	.024219	57,472	916	.015938
59	50,644	1,319	.026045	56,556	971	.017169
60	49,325	1,383	.028039	55,585	1,031	.018548
61	47,942	1,449	.030224	54,554	1,096	.020090
62	46,493	1,515	.032586	53,458	1,164	.021774
63	44,978	1,582	.035173	52,294	1,236	.023636
64	43,396	1,648	.037976	51,058	1,311	.025677
65	41,748	1,710	.040960	49,747	1,388	.027901
66	40,038	1,769	.044183	48,359	1,468	.030356
67	38,269	1,822	.047610	46,891	1,548	.033013
68	36,447	1,870	.051307	45,343	1,628	.035904
69	34,577	1,911	.055268	43,715	1,708	.039071
70	32,666	1,946	.059573	42,007	1,785	.042493
71	30,727	1,971	.064160	40,222	1,860	.046243
72	28,749	1,987	.069115	38,362	1,929	.050284
73	26,762	1,990	.074359	36,433	1,992	.054676
74	24,772	1,979	.079889	34,441	2,048	.059464
75	22,793	1,960	.085991	32,393	2,086	.064397
76	20,833	1,930	.092641	30,307	2,114	.069753
77	18,903	1,886	.099773	28,193	2,129	.075515
78	17,017	1,828	.10742	26,064	2,133	.081837
79	15,189	1,758	.11574	23,931	2,121	.088630
80	13,431	1,674	.12464	21,810	2,095	.096057
81	11,757	1,578	.13422	19,715	2,051	.10403
82	10,179	1,471	.14451	17,664	1,989	.11260
83	8,708	1,356	.15572	15,675	1,913	.12204
84	7,352	1,233	.16771	13,762	1,819	.13218
85	6,119	1,105	.18059	11,943	1,710	.14318
86	5,014	976	.19465	10,233	1,587	.15509
87	4,038	846	.20951	8,646	1,452	.16794
88	3,192	720	.22556	7,194	1,308	.18182
89	2,472	601	.24312	5,886	1,159	.19691
90	1,871	490	.26189	4,727	1,009	.21345
91	1,381	389	.28168	3,718	859	.23104
92	992	301	.30343	2,859	716	.25044
93	691	226	.32706	2,143	581	.27112
94	465	164	.35269	1,562	459	.29385
95	301	114	.37874	1,103	351	.31822
96	187	76	.40642	752	259	.34441
97	111	49	.44144	493	184	.37323
98	62	29	.46774	309	125	.40453
99	33	17	.51515	184	81	.44022
100	16	9	.56250	103	49	.47573
101	7	4	.57143	54	28	.51852
102	3	2	.66667	26	14	.53846
103	1	1	1.00000	12	7	.58333
104	—	—	—	5	3	.60000
105	—	—	—	2	1	.50000
106	—	—	—	1	1	1.00000

備考 本表ハ明治四十五年内閣統計局ノ發表シタル第二表ノ死亡率ヨリ男子ハ男子死亡率ノ二割ヲ、女子ハ女子死亡率ノ三割ヲ減シテ作成シタルモノナリ。

(續) 郵 便 年 金 基

第 五 表 (二)

(保證期間附即時終身年金、保證期間附据選終身年金及)

年 齡	男 子			女 子		
	生 殘 數	死 亡 數	死 亡 率	生 殘 數	死 亡 數	死 亡 率
0	100,000	11,238	.112380	100,000	8,690	.086900
1	88,792	3,063	.034496	91,310	2,691	.029471
2	85,729	1,534	.017894	88,619	1,405	.015854
3	84,195	1,010	.011996	87,214	951	.010904
4	83,185	653	.007850	86,263	640	.007419
5	82,532	425	.005150	85,623	425	.004964
6	82,107	319	.003885	85,198	311	.003650
7	81,788	260	.003179	84,887	245	.002886
8	81,528	218	.002674	84,642	204	.002410
9	81,310	186	.002288	84,438	180	.002132
10	81,124	171	.002108	84,258	177	.002101
11	80,953	158	.001952	84,081	182	.002165
12	80,795	162	.002005	83,899	203	.002420
13	80,633	187	.002319	83,696	253	.003023
14	80,446	238	.002959	83,443	343	.004111
15	80,208	322	.004015	83,100	426	.005126
16	79,886	415	.005195	82,674	499	.006036
17	79,471	509	.006405	82,175	546	.006644
18	78,962	575	.007282	81,629	577	.007069
19	78,387	609	.007769	81,052	592	.007304
20	77,778	611	.007856	80,460	596	.007407
21	77,167	600	.007775	79,864	593	.007425
22	76,567	583	.007614	79,271	579	.007304
23	75,984	563	.007409	78,692	561	.007129
24	75,421	541	.007173	78,131	543	.006950
25	74,880	516	.006891	77,588	524	.006754
26	74,364	491	.006603	77,064	508	.006592
27	73,873	474	.006416	76,556	495	.006466
28	73,399	455	.006199	76,061	482	.006337
29	72,944	439	.006018	75,579	473	.006258
30	72,505	429	.005917	75,106	470	.006258
31	72,076	420	.005827	74,636	466	.006244
32	71,656	420	.005861	74,170	466	.006283
33	71,236	425	.005966	73,704	467	.006336
34	70,811	431	.006087	73,237	469	.006404
35	70,380	434	.006167	72,768	472	.006486
36	69,946	435	.006219	72,296	477	.006598
37	69,511	447	.006431	71,819	480	.006683
38	69,064	467	.006762	71,339	486	.006813
39	68,597	494	.007201	70,853	493	.006958
40	68,103	522	.007665	70,360	495	.007035
41	67,581	542	.008020	69,865	492	.007042
42	67,039	569	.008488	69,373	488	.007034
43	66,470	601	.009042	68,885	482	.006997
44	65,869	632	.009595	68,403	480	.007017
45	65,237	662	.010148	67,923	484	.007126
46	64,575	697	.010794	67,439	487	.007221
47	63,878	735	.011506	66,952	505	.007543
48	63,143	778	.012321	66,447	527	.007931
49	62,365	819	.013132	65,920	551	.008359
50	61,546	862	.014006	65,369	577	.008827
51	60,684	911	.015012	64,792	604	.009322
52	59,773	964	.016128	64,188	634	.009877
53	58,809	1,020	.017344	63,554	669	.010526
54	57,789	1,082	.018723	62,835	704	.011195
55	56,707	1,132	.019962	62,181	734	.011804

礎 死 亡 生 殘 表

定期年金(女子ノ掛金率モ男子表ニ依ル)ニ對スルモノ

年 齡	男 子			女 子		
	生 殘 數	死 亡 數	死 亡 率	生 殘 數	死 亡 數	死 亡 率
56	55,575	1,196	.021520	61,447	770	.012531
57	54,379	1,265	.023263	60,677	815	.013432
58	53,114	1,336	.025153	59,862	868	.014500
59	51,778	1,405	.027135	58,994	923	.015646
60	50,373	1,479	.029361	58,071	982	.016910
61	48,894	1,556	.031824	57,089	1,042	.018252
62	47,338	1,649	.034835	56,047	1,120	.019983
63	45,689	1,729	.037843	54,927	1,194	.021738
64	43,960	1,801	.040969	53,733	1,281	.023840
65	42,159	1,850	.043881	52,452	1,361	.025948
66	40,309	1,902	.047185	51,091	1,442	.028224
67	38,407	1,944	.050616	49,649	1,525	.030716
68	36,463	1,991	.054603	48,124	1,623	.033725
69	34,472	2,040	.059178	46,501	1,715	.036881
70	32,432	2,085	.064288	44,786	1,808	.040370
71	30,347	2,119	.069826	42,978	1,878	.043697
72	28,228	2,114	.074890	41,100	1,957	.047616
73	26,114	2,110	.080800	39,143	2,023	.051682
74	24,004	2,092	.087152	37,120	2,114	.056950
75	21,912	2,060	.094012	35,006	2,179	.062246
76	19,852	2,011	.101300	32,827	2,234	.068054
77	17,841	1,948	.109187	30,593	2,275	.074363
78	15,893	1,869	.117599	28,318	2,302	.081291
79	14,024	1,774	.126497	26,016	2,310	.088792
80	12,250	1,668	.136163	23,706	2,299	.096983
81	10,582	1,549	.146381	21,407	2,267	.105900
82	9,033	1,421	.157312	19,140	2,213	.115622
83	7,612	1,287	.169075	16,927	2,134	.126071
84	6,325	1,146	.181186	14,793	2,031	.137295
85	5,179	1,008	.194632	12,762	1,909	.149585
86	4,171	870	.208583	10,853	1,766	.162720
87	3,301	736	.222963	9,087	1,609	.177066
88	2,565	612	.238596	7,478	1,436	.192030
89	1,953	497	.254480	6,042	1,259	.208375
90	1,456	398	.273352	4,783	1,080	.225800
91	1,058	306	.289225	3,703	905	.244396
92	752	233	.309840	2,798	736	.263045
93	519	170	.327553	2,062	588	.285160
94	349	122	.349570	1,474	448	.303935
95	227	84	.370044	1,026	338	.329435
96	143	56	.391608	688	241	.350291
97	87	36	.413793	447	168	.375839
98	51	22	.431373	279	111	.397849
99	29	13	.448276	168	71	.422619
100	16	8	.500000	97	44	.453608
101	8	4	.500000	53	25	.471698
102	4	2	.500000	28	14	.500000
103	2	1	.500000	14	7	.500000
104	1	1	1.000000	7	4	.571429
105	—	—	—	3	2	.666667
106	—	—	—	1	1	1.000000

備考 本表ハ昭和十一年内閣統計局ノ發表シタル第五回生命表ノ死亡率ヨリ男子ハ男子死亡率ノ二割ヲ、女子ハ女子死亡率ノ三割ヲ減シテ作成シタルモノナリ。

「即時年金」掛金表

第六表

■年金年額百圓=對スル場合■

契約年齢	返還金ヲ支拂フモノ		返還金ヲ支拂ハザルモノ	
	男	女子	男	女子
40	1,898.62	2,007.57	1,739.40	1,867.64
41	1,875.55	1,985.87	1,711.96	1,845.48
42	1,851.98	1,963.48	1,683.86	1,822.22
43	1,828.01	1,940.32	1,655.20	1,797.78
44	1,803.61	1,916.77	1,626.00	1,772.30
45	1,779.18	1,892.78	1,596.29	1,745.73
46	1,754.36	1,868.32	1,566.09	1,718.00
47	1,728.97	1,843.42	1,535.31	1,689.35
48	1,703.20	1,818.15	1,504.13	1,659.91
49	1,677.47	1,792.33	1,472.46	1,629.53
50	1,651.46	1,766.21	1,440.43	1,598.38
51	1,625.02	1,739.74	1,407.94	1,566.70
52	1,598.28	1,712.70	1,375.05	1,534.35
53	1,571.69	1,685.57	1,341.80	1,501.43
54	1,544.74	1,658.15	1,308.20	1,467.87
55	1,517.45	1,630.30	1,274.33	1,433.78
56	1,490.21	1,602.00	1,240.25	1,399.14
57	1,463.06	1,574.01	1,206.00	1,364.00
58	1,435.58	1,545.55	1,171.62	1,328.40
59	1,407.64	1,516.75	1,137.22	1,292.46
60	1,380.51	1,487.98	1,102.82	1,256.22
61	1,353.08	1,459.27	1,068.46	1,219.76
62	1,325.37	1,430.19	1,034.23	1,183.16
63	1,297.56	1,400.76	1,000.20	1,146.48
64	1,270.40	1,372.15	966.41	1,109.83
65	1,242.97	1,343.12	932.95	1,073.20
66	1,215.07	1,313.64	899.83	1,036.71
67	1,187.98	1,284.72	867.10	1,000.42
68	1,161.08	1,256.02	834.74	964.38
69	1,133.92	1,227.01	802.82	928.70
70	1,106.11	1,197.79	771.34	893.34
71	1,080.02	1,169.63	740.37	858.47
72	1,053.69	1,141.12	709.93	824.10
73	1,026.89	1,112.16	680.02	790.27
74	1,000.17	1,084.14	650.66	757.04
75	975.18	1,056.59	621.81	724.52
76	949.70	1,028.58	593.50	692.57
77	923.72	1,000.06	565.84	661.19
78	898.51	974.05	538.86	630.43
79	874.99	947.08	512.53	600.30
80	851.11	919.97	486.92	570.92

備考 本表ハ昭和十一年八月一日改正 (確定利率年三分七厘) ノモノニ依ル。

「保證即時年金」掛金表

第七表

■年金年額百圓=對スル場合■

契約年齢	保證期間三十年		保證期間二十年		保證期間十五年	
	男	女子	男	女子	男	女子
20	2,287.01	2,353.06				
21	2,275.71	2,343.72				
22	2,264.04	2,334.01				
23	2,252.02	2,323.89				
24	2,239.65	2,313.32				
25	2,226.95	2,302.33				
26	2,213.93	2,290.90				
27	2,200.61	2,279.06				
28	2,187.08	2,266.84				
29	2,173.38	2,254.26				
30	2,159.55	2,241.34				
31	2,145.65	2,228.14				
32	2,131.74	2,214.69				
33	2,117.91	2,201.00				
34	2,104.21	2,187.12				
35	2,090.69	2,173.09				
36	2,077.41	2,158.96				
37	2,064.39	2,144.76				
38	2,051.71	2,130.54				
39	2,039.40	2,116.33				
40	2,027.54	2,102.23	1,868.49	1,995.09		
41			1,847.86	1,975.20		
42			1,827.29	1,954.89		
43			1,806.86	1,934.20		
44			1,786.68	1,913.11		
45			1,766.78	1,891.77		
46			1,747.21	1,870.25		
47			1,728.06	1,848.60		
48			1,709.35	1,826.94		
49			1,691.15	1,805.37		
50			1,673.51	1,783.97		
51			1,656.50	1,762.83		
52			1,640.20	1,742.00		
53			1,624.66	1,721.55		
54			1,609.92	1,701.57		
55			1,596.03	1,682.14		
56			1,582.99	1,663.33		
57			1,570.87	1,645.24		
58			1,559.67	1,627.96		
59			1,549.41	1,611.58		
60			1,540.09	1,596.16		
61			1,531.69	1,581.77		
62			1,524.20	1,568.44		
63			1,517.59	1,556.24		
64			1,511.83	1,545.17		
65			1,506.85	1,535.2		
66					1,275.42	1,337.28
67					1,265.42	1,323.56
68					1,256.44	1,305.09
69					1,248.47	1,290.94
70					1,241.48	1,278.12
71					1,235.41	1,266.62
72					1,230.21	1,256.39
73					1,225.78	1,247.43
74					1,222.08	1,239.69
75					1,219.02	1,233.12

備考 保證期間三十年ノモノハ寡婦及厚生大臣ノ定ムル發疾者ニ限ル。

「据置年金」一時拂掛金表

第八表

■年金年額百圓=對スル場合

契約年齢	男				女			
	五十歳支拂開始	五十五歳支拂開始	六十歳支拂開始	六十五歳支拂開始	五十歳支拂開始	五十五歳支拂開始	六十歳支拂開始	六十五歳支拂開始
12	315.58	217.89	142.60	86.70	354.40	253.62	173.87	112.34
13	329.10	227.36	148.89	90.60	369.53	264.56	181.45	117.31
14	343.23	237.27	155.48	94.67	385.33	275.99	189.38	122.51
15	358.01	247.64	162.39	98.96	401.82	287.93	197.67	127.97
16	373.44	258.49	169.63	103.45	419.09	300.41	206.34	133.68
17	389.55	269.83	177.21	108.17	437.10	313.46	215.43	139.65
18	406.36	281.69	185.14	113.15	455.87	327.10	224.93	145.91
19	423.97	294.06	193.44	118.36	475.42	341.31	234.85	152.44
20	442.34	306.99	202.12	123.81	495.81	356.14	245.21	159.28
21	461.47	320.56	211.25	129.54	517.07	371.60	256.02	166.42
22	481.41	334.71	220.78	135.54	539.23	387.70	267.29	173.89
23	502.18	349.48	230.76	141.82	562.34	404.51	279.08	181.70
24	523.93	364.90	241.20	148.41	586.36	422.08	291.37	189.86
25	546.63	381.00	252.13	155.32	611.44	440.42	304.21	198.41
26	570.31	397.83	263.58	162.58	637.62	459.54	317.68	207.34
27	595.01	415.47	275.56	170.20	664.86	479.45	331.72	216.74
28	620.86	433.97	288.11	178.20	693.25	500.22	346.42	226.57
29	647.93	453.32	301.25	186.61	722.87	521.95	361.74	236.85
30	676.14	473.53	315.11	195.44	753.81	544.66	377.76	247.61
31	705.62	494.67	329.69	204.73	786.01	568.33	394.49	258.88
32	736.64	516.91	344.98	214.59	819.61	592.99	412.00	270.68
33	769.00	540.24	361.01	224.97	854.67	618.78	430.35	283.02
34	802.79	564.67	377.83	235.93	891.24	645.78	449.54	295.94
35	838.36	590.21	395.47	247.43	929.41	673.91	469.57	309.52
36	875.58	617.11	414.10	259.57	969.21	703.19	490.48	323.77
37	914.50	645.37	433.77	272.36	1,010.69	733.96	512.38	338.73
38	955.46	674.96	454.39	285.81	1,054.13	766.03	535.38	354.39
39	998.30	705.97	476.08	300.05	1,099.31	799.44	559.38	370.78
40	1,043.41	738.77	498.83	315.11	1,146.71	834.54	584.47	387.96
41	1,090.69	773.18	522.97	331.14	1,196.17	871.24	610.80	405.98
42	1,140.48	809.23	548.43	348.04	1,248.01	909.51	638.48	425.08
43	1,192.73	847.44	575.16	365.88	1,301.96	949.69	667.36	445.04
44	1,248.03	887.49	603.28	384.69	1,358.87	991.68	697.62	466.02
45	1,306.00	929.84	633.30	404.59	1,418.40	1,035.94	729.59	488.05
46	—	974.53	664.90	425.99	—	1,082.22	763.09	511.23
47	—	1,021.52	698.04	448.52	—	1,130.91	798.18	535.85
48	—	1,071.39	733.43	472.36	—	1,182.22	835.41	561.74
49	—	1,123.94	770.72	497.50	—	1,236.15	874.42	589.90
50	—	1,179.83	810.09	524.49	—	1,292.76	915.35	617.63
51	—	—	852.22	553.22	—	—	958.91	648.15
52	—	—	896.49	583.49	—	—	1,004.44	680.21
53	—	—	944.02	615.79	—	—	1,053.11	714.08
54	—	—	994.12	650.54	—	—	1,104.04	750.26
55	—	—	1,048.04	687.16	—	—	1,158.63	788.29
56	—	—	—	726.53	—	—	—	828.84
57	—	—	—	768.60	—	—	—	871.91
58	—	—	—	813.27	—	—	—	917.54
59	—	—	—	861.78	—	—	—	966.49
60	—	—	—	913.21	—	—	—	1,018.41

備考 本表ハ昭和十一年八月一日改正 (豫定利率年三分七厘) ノモノニ依ル。

「保証据置年金」一時拂掛金表

第九表

■年金年額百圓=對スル場合

契約年齢	男				女			
	五十歳支拂開始	五十五歳支拂開始	六十歳支拂開始	六十五歳支拂開始	五十歳支拂開始	五十五歳支拂開始	六十歳支拂開始	六十五歳支拂開始
12	390.86	298.09	224.09	163.09	421.56	323.25	246.24	185.60
13	406.75	310.47	233.65	170.30	438.60	336.48	256.48	193.49
14	423.29	323.36	243.62	177.84	456.31	350.24	267.15	201.71
15	440.49	336.80	254.03	185.72	474.69	364.55	278.24	210.27
16	458.37	350.77	264.89	193.96	493.78	379.41	289.78	219.19
17	476.92	365.29	276.18	202.55	513.57	394.83	301.76	228.46
18	496.16	380.38	287.93	211.52	534.10	410.84	314.21	238.11
19	516.11	396.03	300.15	220.86	555.41	427.46	327.15	248.16
20	536.80	412.29	312.86	230.61	577.49	444.71	340.59	258.60
21	558.27	429.19	326.09	240.78	600.39	462.61	354.56	269.48
22	580.53	446.72	339.86	251.39	624.15	481.19	369.07	280.79
23	603.63	464.95	354.19	262.46	648.79	500.48	384.16	292.57
24	627.60	483.90	369.11	274.03	674.35	520.51	399.84	304.82
25	652.49	503.60	384.66	286.12	700.87	541.31	416.14	317.59
26	678.31	524.06	400.85	298.73	728.37	562.89	433.07	330.87
27	705.07	545.30	417.69	311.90	756.87	585.28	450.65	344.69
28	732.88	567.41	435.25	325.67	786.43	608.53	468.94	359.07
29	761.74	590.38	453.54	340.06	817.12	632.69	487.96	374.06
30	791.67	614.25	472.58	355.09	848.91	657.73	507.70	389.65
31	822.72	639.06	492.42	370.80	881.86	683.71	528.20	405.87
32	854.93	664.83	513.07	387.20	916.06	710.71	549.53	422.78
33	888.34	691.60	534.58	404.35	951.47	738.69	571.67	440.35
34	922.99	719.41	556.98	422.27	988.13	767.68	594.64	458.61
35	958.89	748.27	580.27	440.97	1,026.12	797.76	618.49	477.62
36	996.09	778.23	604.52	460.50	1,065.52	828.97	643.29	497.41
37	1,034.73	809.41	629.81	480.96	1,106.30	861.32	669.02	517.99
38	1,074.70	841.72	656.08	502.29	1,148.52	894.85	695.72	539.39
39	1,116.04	875.19	683.37	524.52	1,192.16	929.53	723.38	561.60
40	1,158.89	909.94	711.78	547.76	1,237.44	965.56	752.15	584.75
41	1,203.23	945.97	741.30	572.01	1,284.18	1,002.79	781.92	608.75
42	1,249.13	983.33	772.00	597.33	1,332.59	1,041.39	812.83	633.72
43	1,296.49	1,021.95	803.82	623.68	1,382.73	1,081.41	844.92	659.70
44	1,345.49	1,061.97	836.88	651.16	1,434.46	1,122.74	878.12	686.62
45	1,396.01	1,103.31	871.11	679.75	1,488.04	1,165.60	912.59	714.65
46	—	1,146.07	906.61	709.51	—	1,210.01	948.36	743.79
47	—	1,190.33	943.46	740.54	—	1,255.95	985.42	774.05
48	—	1,236.01	981.59	772.78	—	1,303.38	1,023.74	805.41
49	—	1,283.09	1,021.00	806.24	—	1,352.42	1,063.41	837.94
50	—	1,331.60	1,061.70	840.94	—	1,403.11	1,104.48	871.70
51	—	—	1,103.76	876.95	—	—	1,147.02	906.75
52	—	—	1,147.16	914.26	—	—	1,190.96	943.03
53	—	—	1,191.89	952.87	—	—	1,236.35	980.59
54	—	—	1,237.92	992.77	—	—	1,283.22	1,019.46
55	—	—	1,285.23	1,033.93	—	—	1,331.58	1,059.66
56	—	—	—	1,076.40	—	—	—	1,101.21
57	—	—	—	1,120.06	—	—	—	1,144.13
58	—	—	—	1,164.94	—	—	—	1,188.40
59	—	—	—	1,210.98	—	—	—	1,234.03
60	—	—	—	1,258.08	—	—	—	1,281.02

「保護据置年金」

第十表 (一)

男

契約年齢	五十歳支拂開始					五十五歳支拂開始					契約年齢
	新契約又は 第二回以後 拂込ノ端数 月0-1	第二回以後拂込ノ端数月				新契約又は 第二回以後 拂込ノ端数 月0-1	第二回以後拂込ノ端数月				
		2-4	5-7	8-10	11-12		2-4	5-7	8-10	11-12	
12	.255846	.253274	.250746	.248274	.245851	.335469	.332016	.328645	.325330	.322092	12
13	.245851	.243374	.240952	.238572	.236245	.322092	.318786	.315537	.312363	.309253	13
14	.236245	.233869	.231540	.229258	.227020	.309253	.306072	.302957	.299904	.296912	14
15	.227020	.224739	.222504	.220313	.218164	.296912	.293867	.290875	.287952	.285087	15
16	.218164	.215978	.213835	.211739	.209679	.285087	.282167	.279306	.276503	.273755	16
17	.209679	.207585	.205533	.203521	.201548	.273755	.270959	.268212	.265527	.262895	17
18	.201548	.199541	.197574	.195649	.193757	.262895	.260220	.257593	.255024	.252506	18
19	.193757	.191835	.189948	.188101	.186289	.252506	.249938	.247427	.244960	.242548	19
20	.186289	.184444	.182635	.180865	.179125	.242548	.240085	.237676	.235311	.232997	20
21	.179125	.177355	.175623	.173922	.172256	.232997	.230643	.228331	.226070	.223854	21
22	.172256	.170558	.168896	.167263	.165664	.223854	.221592	.219375	.217207	.215077	22
23	.165664	.164037	.162438	.160873	.159337	.215077	.212906	.210779	.208699	.206654	23
24	.159337	.157774	.156238	.154734	.153259	.206654	.204570	.202532	.200529	.198570	24
25	.153259	.151757	.150286	.148841	.147425	.198570	.196572	.194617	.192697	.190818	25
26	.147425	.145985	.144573	.143189	.141830	.190818	.188904	.187028	.185189	.183385	26
27	.141830	.140445	.139086	.137754	.136448	.183385	.181544	.179740	.177974	.176239	27
28	.136448	.135117	.133813	.132533	.131278	.176239	.174474	.172741	.171045	.169382	28
29	.131278	.130002	.128748	.127520	.126315	.169382	.167687	.166025	.164398	.162800	29
30	.126315	.125089	.123885	.122705	.121548	.162800	.161173	.159576	.158013	.156480	30
31	.121548	.120370	.119214	.118080	.116969	.156480	.154919	.153386	.151886	.150414	31
32	.116969	.115837	.114726	.113638	.112570	.150414	.148916	.147445	.146005	.144592	32
33	.112570	.111483	.110415	.109370	.108344	.144592	.143154	.141741	.140359	.139006	33
34	.108344	.107300	.106277	.105272	.104287	.139006	.137622	.136269	.134942	.133642	34
35	.104287	.103286	.102303	.101339	.100393	.133642	.132317	.131019	.129745	.128497	35
36	.100393	.099428	.098482	.097554	.096644	.128497	.127222	.125973	.124747	.123547	36
37	.096644	.095719	.094812	.093922	.093049	.123547	.122326	.121128	.119956	.118804	37
38	.093049	.092163	.091293	.090440	.089603	.118804	.117635	.116488	.115364	.114261	38
39	.089603	.088751	.087914	.087094	.086289	.114261	.113138	.112036	.110957	.109897	39
40	.086289	.085472	.084670	.083882	.083110	.109897	.108820	.107763	.106728	.105712	40
41	.083110	.082324	.081554	.080798	.080056	.105712	.104678	.103665	.102670	.101695	41
42	.080056	.079304	.078566	.077842	.077131	.101695	.100706	.099737	.098785	.097852	42
43	.077131	.076409	.075701	.075005	.074322	.097852	.096903	.095973	.095060	.094165	43
44	.074322	.073631	.072953	.072287	.071633	.094165	.093257	.092367	.091493	.090636	44
45	.071633	.070970	.070319	.069680	.069053	.090636	.089767	.088913	.088076	.087255	45
46	[.069053]	.068416	.067791	.067178	.066575	.087255	.086420	.085602	.084798	.084010	46
47	[.066575]	.065966	.065367	.064779	.064202	.084010	.083212	.082429	.081660	.080905	47
48	[.064202]	.063618	.063045	.062482	.061929	.080905	.080142	.079393	.078658	.077937	48
49	[.061929]	.061371	.060822	.060284	.059755	.077937	.077207	.076491	.075788	.075098	49
50						.075098	.074399	.073714	.073041	.072380	50
51						[.072380]	.071712	.071056	.070413	.069780	51
52						[.069780]	.069142	.068515	.067900	.067296	52
53						[.067296]	.066686	.066087	.065499	.064922	53
54						[.064922]	.064340	.063769	.063207	.062655	54
55											55
56											56
57											57
58											58
59											59
60											60
61											61
62											62
63											63
64											64

備考 []内ノ数字ハ第二回以後拂込ノ場合ニ限リ使用スルモノナリ。

隨時拂年金額表

子

■掛金一圓ニ對スル場合■

契約年齢	六十歳支拂開始					六十五歳支拂開始					契約年齢
	新契約又は 第二回以後 拂込ノ端数 月0-1	第二回以後拂込ノ端数月				新契約又は 第二回以後 拂込ノ端数 月0-1	第二回以後拂込ノ端数月				
		2-4	5-7	8-10	11-12		2-4	5-7	8-10	11-12	
12	.446249	.441540	.436929	.432414	.427991	.613158	.606465	.599880	.593472	.587199	12
13	.427991	.423478	.419041	.414714	.410475	.587199	.580754	.574482	.568311	.562303	13
14	.410475	.406141	.401881	.397725	.393654	.562303	.556143	.550116	.544218	.538445	14
15	.393654	.389484	.385416	.381417	.377515	.538445	.532538	.526759	.521105	.515570	15
16	.377515	.373539	.369631	.365818	.362083	.515570	.509918	.504388	.499002	.493705	16
17	.362083	.358269	.354534	.350890	.347307	.493705	.488305	.482998	.477829	.472769	17
18	.347307	.343654	.340090	.336587	.333167	.472769	.467596	.462556	.457603	.452776	18
19	.333167	.329674	.326254	.322914	.319632	.452776	.447828	.442958	.438270	.433633	19
20	.319632	.316286	.313009	.309809	.306664	.433633	.428908	.424268	.419745	.415317	20
21	.306664	.303463	.300318	.297247	.294239	.415317	.410796	.406355	.402026	.397788	21
22	.294239	.291172	.288160	.285217	.282334	.397788	.393453	.389211	.385075	.381010	22
23	.282334	.279392	.276510	.273688	.270922	.381010	.376861	.372787	.368813	.364924	23
24	.270922	.268097	.265329	.262626	.259970	.364924	.360946	.357041	.353232	.349504	24
25	.259970	.257261	.254608	.252016	.249470	.349504	.345698	.341962	.338318	.334750	25
26	.249470	.246877	.244337	.241850	.239412	.334750	.331104	.327525	.324034	.320616	26
27	.239412	.236922	.234483	.232094	.229753	.320616	.317118	.313686	.310337	.307059	27
28	.229753	.227366	.225023	.222732	.220488	.307059	.303702	.300418	.297212	.294066	28
29	.220488	.218198	.215955	.213757	.211604	.294066	.290850	.287704	.284633	.281619	29
30	.211604	.209407	.207254	.205145	.203079	.281619	.278536	.275520	.272576	.269687	30
31	.203079	.200973	.198906	.196885	.194905	.269687	.266738	.263852	.261028	.258264	31
32	.194905	.192883	.190902	.188964	.187063	.258264	.255434	.252666	.249963	.247310	32
33	.187063	.185123	.183224	.181363	.179540	.247310	.244600	.241949	.239355	.236815	33
34	.179540	.177683	.175861	.174080	.172334	.236815	.234219	.231685	.229200	.226773	34
35	.172334	.170552	.168805	.167096	.165420	.226773	.224291	.221857	.219481	.217155	35
36	.165420	.163709	.162030	.160387	.158778	.217155	.214767	.212436	.210150	.207917	36
37	.158778	.157139	.155533	.153962	.152420	.207917	.205639	.203405	.201223	.199088	37
38	.152420	.150852	.149314	.147809	.146334	.199088	.196909	.194776	.192693	.190650	38
39	.146334	.144829	.143353	.141908	.140493	.190650	.188562	.186518	.184519	.182562	39
40	.140493	.139051	.137639	.136255	.134898	.182562	.180564	.178607	.176694	.174822	40
41	.134898	.133515	.132162	.130834	.129534	.174822	.172909	.171037	.169205	.167412	41
42	.129534	.128212	.126918	.125649	.124406	.167412	.165585	.163797	.162051	.160339	42
43	.124406	.123139	.121899	.120683	.119491	.160339	.158592	.156882	.155210	.153572	43
44	.119491	.118282	.117096	.115935	.114796	.153572	.151904	.150272	.148677	.147113	44
45	.114796	.113638	.112504	.111391	.110301	.147113	.145520	.143962	.142436	.140942	45
46	.110301	.109192	.108103	.107038	.105993	.140942	.139418	.137925	.136467	.135037	46
47	.105993	.104933	.103893	.102874	.101876	.135037	.133583	.132160	.130767	.129403	47
48	.101876	.100863	.099870	.098897	.097943	.129403	.128016	.126661	.125332	.124033	48
49	.097943	.096976	.096029	.095100	.094189	.124033	.122711	.121420	.120153	.118915	49
50	.094189	.093264	.092359	.091470	.090599	.118915	.117655	.116421	.115214	.114032	50
51	.090599	.089717	.088853	.088004	.087172	.114032	.112831	.111656	.110506	.109378	51
52	.087172	.086330	.085504	.084695	.083900	.109378	.108236	.107116	.106020	.104946	52
53	.083900	.083098	.082311	.081539	.080781	.104946	.103858	.102794	.101750	.100728	53
54	.080781	.080016	.079266	.0785							

(續) 「保證据 匯 年 金」

第十表 (二)

女

契約 年 齡	五十歳支拂開始					五十五歳支拂開始				
	新契約又は 第二回以後 拂込ノ端數 月0-1	第二回以後拂込ノ端數月				新契約又は 第二回以後 拂込ノ端數 月0-1	第二回以後拂込ノ端數月			
		2-4	5-7	8-10	11-12		2-4	5-7	8-10	11-12
12	.237214	.234841	.232515	.230234	.227998	.309358	.306222	.303150	.300147	.297194
13	.227998	.225718	.223484	.221298	.219149	.297194	.294187	.291240	.288351	.285519
14	.219149	.216962	.214823	.212721	.210664	.285519	.282630	.279799	.277031	.274311
15	.210664	.208568	.206509	.204495	.202519	.274311	.271540	.268832	.266170	.263567
16	.202519	.200509	.198539	.196610	.194715	.263567	.260913	.258318	.255768	.253274
17	.194715	.192790	.190898	.189047	.187231	.253274	.250733	.248238	.245797	.243404
18	.187231	.185381	.183567	.181792	.180047	.243404	.240964	.238578	.236233	.233940
19	.180047	.178275	.176538	.174834	.173163	.233940	.231605	.229310	.227066	.224866
20	.173163	.171462	.169797	.168160	.166558	.224866	.222623	.220429	.218274	.216165
21	.166558	.164927	.163327	.161757	.160218	.216165	.214014	.211909	.209842	.207818
22	.160218	.158652	.157117	.155611	.154133	.207818	.205757	.203732	.201751	.199808
23	.154133	.152630	.151156	.149710	.148291	.199808	.197828	.195886	.193986	.192119
24	.148291	.146847	.145431	.144042	.142680	.192119	.190219	.188356	.186529	.184737
25	.142680	.141293	.139935	.138600	.137293	.184737	.182912	.181127	.179372	.177655
26	.137293	.135962	.134658	.133378	.132123	.177655	.175905	.174189	.172509	.170858
27	.132123	.130846	.129592	.128363	.127157	.170858	.169179	.167529	.165915	.164330
28	.127157	.125929	.124722	.123541	.122381	.164330	.162715	.161132	.159579	.158055
29	.122381	.121202	.120045	.118912	.117798	.158055	.156507	.154988	.153499	.152038
30	.117798	.116666	.115555	.114466	.113397	.152038	.150550	.149094	.147663	.146261
31	.113397	.112308	.111240	.110192	.109163	.146261	.144831	.143429	.142054	.140704
32	.109163	.108119	.107093	.106087	.105101	.140704	.139332	.137988	.136668	.135375
33	.105101	.104097	.103114	.102148	.101201	.135375	.134059	.132769	.131505	.130263
34	.101201	.100238	.99292	.98365	.97454	.130263	.128999	.127760	.126544	.125351
35	.97454	.96528	.95619	.94727	.93851	.125351	.124137	.122945	.121777	.120632
36	.93851	.92961	.92089	.91232	.90391	.120632	.119466	.118322	.117202	.116101
37	.90391	.89537	.88699	.87876	.87069	.116101	.114982	.113884	.112807	.111751
38	.87069	.86249	.85445	.84656	.83881	.111751	.110678	.109626	.108594	.107581
39	.83881	.83092	.82318	.81558	.80812	.107581	.106548	.105535	.104542	.103567
40	.80812	.80056	.79314	.78585	.77871	.103567	.102578	.101607	.100656	.99722
41	.77871	.77144	.76430	.75729	.75042	.99722	.99071	.98439	.97824	.97226
42	.75042	.74342	.73656	.72982	.72321	.97226	.96606	.95997	.95402	.94821
43	.72321	.71651	.70992	.70347	.69713	.94821	.94215	.93621	.93039	.92468
44	.69713	.69067	.68435	.67813	.67202	.92468	.91882	.91307	.90743	.90189
45	.67202	.66582	.65973	.65375	.64788	.90189	.89633	.89087	.88551	.88026
46	[.064788]	.064192	.063607	.063033	.062469	.88026	.87484	.86951	.86428	.85915
47	[.062469]	.061897	.061336	.060785	.060244	.85915	.85392	.84878	.84374	.83879
48	[.060244]	.059695	.059157	.058628	.058108	.83879	.83374	.82878	.82391	.81913
49	[.058108]	.057580	.057063	.056554	.056055	.81913	.81433	.80961	.80497	.80041
50						.80041	.79586	.79139	.78700	.78268
51						[.068703]	.068071	.067450	.066841	.066243
52						[.066243]	.065636	.065041	.064456	.063882
53						[.063882]	.063301	.062730	.062169	.061619
54						[.061619]	.061061	.060514	.059976	.059448
55										
56										
57										
58										
59										
60										
61										
62										
63										
64										

備考 []内ノ数字ハ第二回以後拂込ノ場合ニ限リ使用スルモノナリ。

隨時拂年金額表

子

匯折金一圓ニ對スル場合ニ

契約 年 齡	六十歳支拂開始					六十五歳支拂開始				
	新契約又は 第二回以後 拂込ノ端數 月0-1	第二回以後拂込ノ端數月				新契約又は 第二回以後 拂込ノ端數 月0-1	第二回以後拂込ノ端數月			
		2-4	5-7	8-10	11-12		2-4	5-7	8-10	11-12
12	.406108	.401929	.397836	.393825	.389894	.538793	.533134	.527565	.522139	.516823
13	.389894	.385877	.381942	.378100	.374322	.516823	.511378	.506073	.500851	.495761
14	.374322	.370480	.366703	.363016	.359402	.495761	.490557	.485460	.480469	.475579
15	.359402	.355707	.352100	.348554	.345089	.475579	.470588	.465701	.460914	.456225
16	.345089	.341553	.338101	.334706	.331389	.456225	.451447	.446768	.442204	.437713
17	.331389	.328009	.324686	.321440	.318258	.437713	.433144	.428651	.424268	.419974
18	.318258	.315010	.311837	.308718	.305670	.419974	.415593	.411286	.407083	.402966
19	.305670	.302563	.299518	.296534	.293608	.402966	.398772	.394664	.390640	.386698
20	.293608	.290630	.287704	.284843	.282040	.386698	.382673	.378730	.374869	.371085
21	.282040	.279181	.276381	.273643	.270951	.371085	.367229	.363451	.359764	.356138
22	.270951	.268212	.265520	.262888	.260308	.356138	.352435	.348821	.345268	.341799
23	.260308	.257679	.255102	.252576	.250100	.341799	.338261	.334784	.331389	.328062
24	.250100	.247574	.245104	.242677	.240304	.328062	.324665	.321326	.318066	.314871
25	.240304	.237886	.235510	.233187	.230910	.314871	.311614	.308423	.305297	.302234
26	.230910	.228587	.226316	.224085	.221902	.302234	.299106	.296051	.293049	.290116
27	.221902	.219674	.217486	.215346	.213247	.290116	.287117	.284188	.281310	.278497
28	.213247	.211104	.209008	.206949	.204935	.278497	.275619	.272799	.270044	.267337
29	.204935	.202881	.200872	.198898	.196967	.267337	.264578	.261876	.259235	.256641
30	.196967	.194996	.193069	.191175	.189322	.256641	.253994	.251408	.248868	.246384
31	.189322	.187431	.185574	.183756	.181974	.246384	.243843	.241354	.238920	.236530
32	.181974	.180157	.178380	.176635	.174926	.236530	.234099	.231712	.229379	.227092
33	.174926	.173187	.171480	.169808	.168169	.227092	.224760	.222479	.220240	.218050
34	.168169	.166500	.164861	.163257	.161684	.218050	.215815	.213620	.211475	.209371
35	.161684	.160079	.158506	.156964	.155451	.209371	.207224	.205120	.203062	.201041
36	.155451	.153912	.152402	.150923	.149472	.201041	.198981	.196967	.194989	.193054
37	.149472	.147995	.146548	.145127	.143736	.193054	.191080	.189147	.187252	.185395
38	.143736	.142320	.140934	.139573	.138240	.185395	.183506	.181653	.179840	.178063
39	.138240	.136879	.135544	.134235	.132952	.178063	.176246	.174465	.172724	.171013
40	.132952	.131650	.130371	.129119	.127890	.171013	.169276	.167574	.165906	.164271
41	.127890	.126638	.125411	.124208	.123027	.164271	.162604	.160968	.159368	.157798
42	.123027	.121825	.120645	.119489	.118354	.157798	.156196	.154629	.153090	.151584
43	.118354	.117203	.116074	.114966	.113880	.151584	.150053	.148553	.147083	.145641
44	.113880	.112773	.111687	.110623	.109578	.145641	.144169	.142727	.141315	.139929
45	.109578	.108515	.107471	.106449	.105445	.139929	.138516	.137133	.135775	.134447
46	.105445	.104424	.103424	.102442	.101480	.134447	.133092	.131766	.130465	.129191
47	.101480	.100503	.99544	.990504	.985681	.129191	.127895	.126626	.125381	.124160
48	.985681	.97681	.96744	.95824	.94923	.94037	.93160	.92292	.91432	.90580
49	.94037	.93138	.92255	.91390	.90540	.90540	.89700	.88878	.88064	.87268
50	.90540	.89676	.88830	.87998	.87182	.87182	.86372	.85577	.84788	.84014
51	.87182	.86355	.85544	.84747	.83966	.83966	.83191	.82431	.81686	.80956
52	.83966	.83173	.82395	.81633	.80883	.80883	.80149	.79430	.78726	.78037
53	.80883	.80124	.79378	.78647	.77929	.77929	.77216	.76518	.75835	.75167
54	.77929	.77202	.76488	.75787	.75099	.75099	.74416	.73748	.73095	.72457
55	.75099	.74402	.73717	.73046	.72387	.72387	.71730	.71088	.70461	.69848
56	[.072387]	.071720	.071064	.070421	.069790	.69790	.69180	.68584	.68002	.67434
57	[.069790]	.069151	.068524	.067909	.067304	.67304	.66714	.66138	.65576	.65028
58	[.067304]	.066693	.066093	.065504	.064925	.64925	.64356	.63801	.63260	.62732
59	[.064925]	.064341	.063767	.063204	.062650	.62650	.62106	.61576	.61060	.60557
60						.60557	.60034	.59524	.59027	.58542
61						[.075225]	.074530	.073847	.073176	.072518
62										

「國 債 金 年 額 表」

第十一表 (一)

契約年 齡	五十歳支拂開始					五十五歳支拂開始				
	新契約又は 第二回以後 拂込ノ端數 月0-1	第二回以後拂込ノ端數月				新契約又は 第二回以後 拂込ノ端數 月0-1	第二回以後拂込ノ端數月			
		2-4	5-7	8-10	11-12		2-4	5-7	8-10	11-12
12	.275103	.272339	.269622	.266959	.264354	.360724	.357003	.353382	.349822	.346332
13	.264354	.261691	.259087	.256529	.254026	.346332	.342783	.339282	.335875	.332535
14	.254026	.251471	.248967	.246512	.244105	.332535	.329110	.325765	.322477	.319264
15	.244105	.241657	.239252	.236894	.234588	.319264	.315986	.312774	.309626	.306542
16	.234588	.232234	.229933	.227676	.225459	.306542	.303407	.300327	.297318	.294360
17	.225459	.223209	.221004	.218838	.216718	.294360	.291350	.288401	.285510	.282686
18	.216718	.214560	.212445	.210376	.208342	.282686	.279806	.276978	.274221	.271510
19	.208342	.206275	.204244	.202257	.200312	.271510	.268752	.266049	.263401	.260804
20	.200312	.198326	.196383	.194477	.192608	.260804	.258158	.255565	.253024	.250532
21	.192608	.190705	.188843	.187014	.185223	.250532	.248004	.245519	.243084	.240703
22	.185223	.183395	.181610	.179853	.178132	.240703	.238271	.235888	.233558	.231267
23	.178132	.176382	.174663	.172980	.171330	.231267	.228932	.226644	.224406	.222207
24	.171330	.169650	.167997	.166381	.164794	.222207	.219969	.217775	.215624	.213516
25	.164794	.163180	.161598	.160044	.158521	.213516	.211367	.209266	.207202	.205179
26	.158521	.156974	.155456	.153967	.152504	.205179	.203124	.201106	.199128	.197188
27	.152504	.151016	.149555	.148124	.146718	.197188	.195210	.193270	.191369	.189505
28	.146718	.145288	.143885	.142509	.141159	.189505	.187607	.185742	.183918	.182133
29	.141159	.139788	.138439	.137118	.135823	.182133	.180307	.178520	.176772	.175055
30	.135823	.134504	.133209	.131942	.130697	.175055	.173304	.171588	.169906	.168257
31	.130697	.129430	.128187	.126968	.125774	.168257	.166578	.164932	.163319	.161736
32	.125774	.124556	.123361	.122191	.121042	.161736	.160126	.158544	.156993	.155475
33	.121042	.119874	.118727	.117601	.116499	.155475	.153929	.152411	.150923	.149466
34	.116499	.115376	.114277	.113195	.112137	.149466	.147979	.146527	.145098	.143701
35	.112137	.111059	.110003	.108967	.107949	.143701	.142276	.140881	.139511	.138169
36	.107949	.106912	.105895	.104897	.103918	.138169	.136797	.135455	.134136	.132846
37	.103918	.102924	.101948	.100992	.100053	.132846	.131532	.130246	.128984	.127747
38	.100053	.990999	.98165	.97247	.96347	.127747	.126489	.125255	.124048	.122861
39	.96347	.95431	.94531	.93650	.92784	.122861	.121653	.120469	.119309	.118170
40	.92784	.91905	.91042	.90196	.89366	.118170	.117011	.115875	.114762	.113669
41	.89366	.88521	.87692	.86879	.86081	.113669	.112557	.111468	.110398	.109349
42	.86081	.85273	.84480	.83702	.82937	.109349	.108286	.107243	.106220	.105218
43	.82937	.82160	.81399	.80651	.79916	.105218	.104197	.103197	.102215	.101252
44	.79916	.79173	.78444	.77728	.77024	.101252	.100276	.99319	.98380	.97458
45	.77024	.76311	.75612	.74925	.74250	.97458	.96523	.95606	.94706	.93822
46	[.074250]	.073566	.072894	.072234	.071586	.093822	.092925	.092045	.091181	.090333
47	[.071586]	.070931	.070287	.069655	.069034	.090333	.089475	.088633	.087806	.086995
48	[.069034]	.068406	.067790	.067185	.066591	.086995	.086174	.085369	.084579	.083803
49	[.066591]	.065990	.065401	.064821	.064252	.083803	.083019	.082248	.081492	.080750
50						.080750	.079999	.079262	.078539	.077828
51	[.077828]	.077109	.076404	.075712	.075032					
52	[.075032]	.074346	.073672	.073011	.072361					
53	[.072361]	.071706	.071062	.070429	.069809					
54	[.069809]	.069183	.068568	.067965	.067371					
55										
56										
57										
58										
59										
60										
61										
62										
63										
64										

備考 []内ノ數字ハ第二回以後拂込ノ場合ニ限リ使用スルモノナリ。

年 金 額 表

■掛金一圓ニ對スル場合■

契約年 齡	六十歳支拂開始					六十五歳支拂開始				
	新契約又は 第二回以後 拂込ノ端數 月0-1	第二回以後拂込ノ端數月				新契約又は 第二回以後 拂込ノ端數 月0-1	第二回以後拂込ノ端數月			
		2-4	5-7	8-10	11-12		2-4	5-7	8-10	11-12
12	.479846	.474766	.469814	.464965	.460214	.659326	.652103	.645036	.638121	.631393
13	.460214	.455353	.450572	.445931	.441365	.631393	.624454	.617703	.611098	.604631
14	.441365	.436719	.432133	.427661	.423280	.604631	.598015	.591506	.585172	.578972
15	.423280	.418796	.414422	.410122	.405927	.578972	.572607	.566412	.560318	.554385
16	.405927	.401655	.397456	.393360	.389332	.554385	.548306	.542358	.536567	.530870
17	.389332	.385238	.381214	.377302	.373455	.530870	.525072	.519346	.513795	.508363
18	.373455	.369522	.365684	.361925	.358243	.508363	.502790	.497364	.492053	.486855
19	.358243	.354484	.350816	.347222	.343690	.486855	.481533	.476327	.471254	.466266
20	.343690	.340090	.336564	.333122	.329750	.466266	.461191	.456204	.451345	.446568
21	.329750	.326307	.322924	.319622	.316386	.446568	.441716	.436948	.432283	.427734
22	.316386	.313087	.309847	.306683	.303582	.427734	.423066	.418515	.414062	.409685
23	.303582	.300418	.297327	.294291	.291316	.409685	.405219	.400850	.396574	.392388
24	.291316	.288276	.285299	.282390	.279540	.392388	.388108	.383921	.379824	.375813
25	.279540	.276625	.273770	.270988	.268248	.375813	.371720	.367701	.363782	.359945
26	.268248	.265456	.262729	.260051	.257433	.359945	.356024	.352175	.348420	.344744
27	.257433	.254758	.252131	.249563	.247048	.344744	.340983	.337302	.333700	.330175
28	.247048	.244481	.241961	.239498	.237085	.330175	.326563	.323029	.319581	.316196
29	.237085	.234621	.232207	.229848	.227531	.316196	.312744	.309358	.306054	.302819
30	.227531	.225169	.222851	.220585	.218364	.302819	.299500	.296261	.293092	.289990
31	.218364	.216099	.213876	.211703	.209573	.289990	.286812	.283712	.280678	.277701
32	.209573	.207400	.205271	.203186	.201142	.277701	.274657	.271680	.268774	.265922
33	.201142	.199056	.197013	.195015	.193054	.265922	.263013	.260159	.257374	.254641
34	.193054	.191058	.189097	.187182	.185305	.254641	.251851	.249122	.246454	.243843
35	.185305	.183389	.181511	.179672	.177873	.243843	.241173	.238555	.235999	.233498
36	.177873	.176032	.174225	.172458	.170730	.233498	.230931	.228425	.225968	.223569
37	.170730	.168967	.167241	.165552	.163894	.223569	.221117	.218713	.216371	.214073
38	.163894	.162206	.160552	.158935	.157349	.214073	.211730	.209437	.207198	.205002
39	.157349	.155729	.154143	.152590	.151067	.205002	.202753	.200558	.198409	.196302
40	.151067	.149517	.147999	.146509	.145052	.196302	.194156	.192049	.189995	.187981
41	.145052	.143565	.142110	.140681	.139284	.187981	.185922	.183911	.181941	.180012
42	.139284	.137863	.136470	.135106	.133770	.180012	.178047	.176128	.174249	.172408
43	.133770	.132408	.131074	.129766	.128485	.172408	.170529	.168691	.166892	.165131
44	.128485	.127184	.125910	.124662	.123437	.165131	.163337	.161582	.159867	.158185
45	.123437	.122191	.120972	.119775	.118603	.158185	.156472	.154796	.153156	.151552
46	.118603	.117411	.116240	.115095	.113971	.151552	.149912	.148306	.146737	.145201
47	.113971	.112831	.111713	.110617	.109543	.145201	.143637	.142108	.140609	.139142
48	.109543	.108455	.107387	.106341	.105315	.139142	.137652	.136195	.134765	.133369
49	.105315	.104275	.103257	.102258	.101278	.133369	.131947	.130559	.129197	.127866
50	.101278	.100285	.99311	.98355	.97418	.127866	.126512	.125185	.123887	.122615
51	.097418	.096470	.095540	.094628	.093733	.122615	.121324	.120060	.118824	.117611
52	.093733	.092828	.091940	.091070	.090215	.117611	.116382	.115178	.114000	.112845
53	.090215	.089353	.088506	.087676	.086861	.112845	.111676	.110531	.109409	.108310
54	.086861	.086039	.085232	.084441	.083664	.108310	.107198	.106110	.105043	.103999
55	.083664	.082890	.082111	.081355	.080614	.103999	.102941	.101905	.100890	.998995
56	[.080614]	.079868	.079136	.078417	.077712					
57	[.077712]	.077001	.076304	.075620	.074948					
58	[.074948]	.074273	.073609	.072958	.072318					
59	[.072318]	.071676	.071046	.070427	.069819					
60										
61										
62										
63										
64										

(續) 「國體年金」

第十一表(二)

女

契約年齢	五十歳支拂開始					五十五歳支拂開始					契約年齢
	新契約又は第二回以後拂込ノ端數月0-1	第二回以後拂込ノ端數月				新契約又は第二回以後拂込ノ端數月0-1	第二回以後拂込ノ端數月				
		2-4	5-7	8-10	11-12		2-4	5-7	8-10	11-12	
12	.255070	.252519	.250019	.247562	.245158	.332646	.329272	.325966	.322737	.319560	12
13	.245158	.242707	.240304	.237954	.235643	.319560	.316326	.313165	.310058	.307012	13
14	.235643	.233291	.230990	.228734	.226521	.307012	.303905	.300860	.297885	.294959	14
15	.226521	.224266	.222054	.219887	.217761	.294959	.291979	.289067	.286205	.283407	15
16	.217761	.215601	.213484	.211408	.209371	.283407	.280552	.277762	.275020	.272339	16
17	.209371	.207301	.205267	.203277	.201325	.272339	.269607	.266923	.264299	.261725	17
18	.201325	.199334	.197383	.195477	.193600	.261725	.259101	.256535	.254013	.251547	18
19	.193600	.191696	.189825	.187995	.186195	.251547	.249035	.246573	.244159	.241791	19
20	.186195	.184369	.182578	.180819	.179096	.241791	.239378	.237023	.234703	.232434	20
21	.179096	.177340	.175620	.173931	.172277	.232434	.230123	.227858	.225637	.223459	21
22	.172277	.170593	.168942	.167322	.165736	.223459	.221244	.219068	.216939	.214846	22
23	.165736	.164117	.162533	.160979	.159451	.214846	.212716	.210628	.208585	.206582	23
24	.159451	.157901	.156377	.154885	.153419	.206582	.204537	.202532	.200570	.198641	24
25	.153419	.151927	.150466	.149031	.147628	.198641	.196680	.194761	.192871	.191026	25
26	.147628	.146195	.144793	.143416	.142068	.191026	.189143	.187301	.185494	.183719	26
27	.142068	.140694	.139348	.138024	.136728	.183719	.181914	.180138	.178403	.176700	27
28	.136728	.135408	.134109	.132839	.131593	.176700	.174963	.173259	.171591	.169952	28
29	.131593	.130324	.129081	.127863	.126664	.169952	.168288	.166653	.165052	.163482	29
30	.126664	.125447	.124253	.123081	.121932	.163482	.161883	.160316	.158778	.157270	30
31	.121932	.120761	.119613	.118486	.117379	.157270	.155732	.154223	.152746	.151295	31
32	.117379	.116256	.115153	.114072	.113011	.151295	.149819	.148375	.146955	.145565	32
33	.113011	.111932	.110876	.109837	.108819	.145565	.144150	.142761	.141403	.140068	33
34	.108819	.107782	.106766	.105769	.104790	.140068	.138708	.137376	.136069	.134785	34
35	.104790	.103794	.102816	.101857	.100915	.134785	.133481	.132200	.130943	.129712	35
36	.100915	.099958	.099020	.098099	.097195	.129712	.128457	.127228	.126024	.124839	36
37	.097195	.096276	.095375	.094490	.093622	.124839	.123637	.122456	.121297	.120162	37
38	.093622	.092741	.091876	.091028	.090195	.120162	.119009	.117877	.116768	.115679	38
39	.090195	.089346	.088514	.087697	.086895	.115679	.114569	.113479	.112411	.111362	39
40	.086895	.086081	.085284	.084500	.083732	.111362	.110299	.109255	.108232	.107228	40
41	.083732	.082950	.082183	.081429	.080690	.107228	.106206	.105203	.104219	.103254	41
42	.080690	.079938	.079200	.078475	.077764	.103254	.102270	.101307	.100360	.099432	42
43	.077764	.077044	.076336	.075642	.074960	.099432	.098491	.097568	.096661	.095772	43
44	.074960	.074266	.073586	.072917	.072261	.095772	.094866	.093978	.093106	.092250	44
45	.072261	.071594	.070939	.070296	.069665	.092250	.091380	.090526	.089687	.088864	45
46	[.069665]	.069024	.068395	.067777	.067171	.088864	.088028	.087209	.086404	.085614	46
47	[.067171]	.066556	.065953	.065361	.064779	.085614	.084813	.084027	.083256	.082499	47
48	[.064779]	.064189	.063609	.063041	.062482	.082499	.081729	.080975	.080234	.079507	48
49	[.062482]	.061915	.061358	.060811	.060274	.079507	.078769	.078044	.077333	.076635	49
50						.076635	.075926	.075229	.074546	.073875	50
51						[.073875]	.073195	.072527	.071873	.071229	51
52						[.071229]	.070577	.069936	.069308	.068691	52
53						[.068691]	.068065	.067452	.066849	.066257	53
54						[.066257]	.065657	.065069	.064490	.063923	54
55											55
56											56
57											57
58											58
59											59
60											60
61						[.080887]	.080139	.079405	.078684	.077976	61
62						[.077976]	.077263	.076563	.075875	.075200	62
63						[.075200]	.074521	.073854	.073199	.072555	63
64						[.072555]	.071909	.071275	.070652	.070039	64

備考 []内ノ数字ハ第二回以後拂込ノ場合ニ限リ使用スルモノナリ。

年金額表

子

掛金一圓ニ對スル場合

契約年齢	六十歳支拂開始					六十五歳支拂開始					契約年齢
	新契約又は第二回以後拂込ノ端數月0-1	第二回以後拂込ノ端數月				新契約又は第二回以後拂込ノ端數月0-1	第二回以後拂込ノ端數月				
		2-4	5-7	8-10	11-12		2-4	5-7	8-10	11-12	
12	.436681	.432189	.427789	.423460	.419234	.579341	.573263	.567279	.561451	.555710	12
13	.419234	.414921	.410694	.406554	.402495	.555710	.549874	.544158	.538561	.533077	13
14	.402495	.398359	.394306	.390335	.386458	.533077	.527482	.522002	.516636	.511378	14
15	.386458	.382482	.378601	.374784	.371058	.511378	.505996	.500751	.495614	.490557	15
16	.371058	.367255	.363544	.359893	.356328	.490557	.485437	.480400	.475489	.470655	16
17	.356328	.352696	.349125	.345638	.342208	.470655	.465744	.460914	.456204	.451590	17
18	.342208	.338719	.335312	.331950	.328677	.451590	.446867	.442243	.437733	.433294	18
19	.328677	.325341	.322061	.318857	.315706	.433294	.428780	.424376	.420045	.415800	19
20	.315706	.312510	.309358	.306279	.303269	.415800	.411472	.407232	.403080	.399010	20
21	.303269	.300192	.297186	.294239	.291341	.399010	.394867	.390808	.386847	.382951	21
22	.291341	.288401	.285502	.282678	.279900	.382951	.378960	.375080	.371250	.367525	22
23	.279900	.277077	.274303	.271584	.268926	.367525	.363716	.359984	.356328	.352759	23
24	.268926	.266205	.263553	.260940	.258391	.352759	.349101	.345507	.342009	.338570	24
25	.258391	.255794	.253235	.250740	.248287	.338570	.335064	.331642	.328278	.324981	25
26	.248287	.245791	.243350	.240952	.238607	.324981	.321616	.318329	.315110	.311954	26
27	.238607	.236211	.233858	.231557	.229300	.311954	.308728	.305577	.302480	.299455	27
28	.229300	.226994	.224739	.222524	.220361	.299455	.296367	.293333	.290368	.287455	28
29	.220361	.218150	.215992	.213867	.211793	.287455	.284495	.281587	.278746	.275961	29
30	.211793	.209674	.207602	.205567	.203571	.275961	.273112	.270329	.267601	.264929	30
31	.203571	.201540	.199541	.197586	.195672	.264929	.262199	.259518	.256904	.254330	31
32	.195672	.193716	.191806	.189930	.188094	.254330	.251718	.249153	.246646	.244182	32
33	.188094	.186223	.184386	.182588	.180825	.244182	.241674	.239223	.236815	.234461	33
34	.180825	.179032	.177270	.175546	.173853	.234461	.232062	.229700	.227392	.225129	34
35	.173853	.172129	.170436	.168779	.167151	.225129	.222821	.220561	.218345	.216174	35
36	.167151	.165497	.163873	.162282	.160723	.216174	.213959	.211793	.209666	.207585	36
37	.160723	.159134	.157580	.156050	.154555	.207585	.205461	.203384	.201345	.199350	37
38	.154555	.153032	.151543	.150078	.148646	.199350	.197320	.195324	.193375	.191465	38
39	.148646	.147182	.145745	.144340	.142959	.191465	.189512	.187596	.185725	.183884	39
40	.142959	.141559	.140184	.138837	.137516	.183884	.182017	.180187	.178393	.176635	40
41	.137516	.136171	.134851	.133558	.132287	.176635	.174844	.173085	.171362	.169676	41
42	.132287	.130995	.129725	.128482	.127262	.169676	.167954	.166268	.164612	.162994	42
43	.127262	.126026	.124811	.123620	.122451	.162994	.161348	.159734	.158153	.156602	43
44	.122451	.121261	.120094	.118950	.117826	.156602	.155020	.153468	.151950	.150462	44
45	.117826	.116683	.115560	.114461	.113383	.150462	.148943	.147456	.145996	.144567	45
46	.113383	.112284	.111209	.110153	.109118	.144567	.143111	.141683	.140284	.138914	46
47	.109118	.108067	.107037	.106025	.105033	.138914	.137521	.136156	.134818	.133506	47
48	.105033	.104026	.103036	.102067	.101115	.133506	.132172	.130863	.129578	.128324	48
49	.101115	.100148	.099199	.098269	.097355	.128324	.127044	.125789	.124559	.123353	49
50	.097355	.096426	.095516	.094622	.093744	.123353	.122125	.120922	.119742	.118585	50
51	.093744	.092855	.091983	.091126	.090286	.118585	.117411	.116259	.115130	.114022	51
52	.090286	.089433	.088598	.087777	.086971	.114022	.112899	.111797	.110715	.109655	52
53	.086971	.086154	.085353	.084567							

「据置年金」

第十二表 (男)

Table with columns for age (契約年齢), start age (五十歳支拂開始, 五十五歳支拂開始, 六十歳支拂開始, 六十五歳支拂開始), and years (全期, 十年, 十五年, 二十年). Rows represent ages from 12 to 60.

備考 1. 本表ハ昭和十一年八月一日改正 (兼定利率年三分五厘) ノモノニ依ル。 2. 半年掛掛金額ハ年掛掛金額ニ其ノ百分ノ二ヲ加ヘタルモノヲ二分シタル額トシ、三月掛掛金額ハ年掛掛金額

分割拂年掛掛金表

(女)

■年金額百圓ニ對スル場合

Table with columns for age (契約年齢), start age (五十歳支拂開始, 五十五歳支拂開始, 六十歳支拂開始, 六十五歳支拂開始), and years (全期, 十年, 十五年, 二十年). Rows represent ages from 12 to 60.

ニ其ノ百分ノ三ヲ加ヘタルモノヲ四分シタル額トス。

「保証据置年金」分割拂年掛掛金表

第十三表

■年金年額百圓=對スル場合

Table with columns for age (契約年齢), sex (男, 女), and payment start age (五十歳支拂開始, 五十五歳支拂開始, 六十歳支拂開始, 六十五歳支拂開始). Rows list ages from 12 to 60.

備考 半年掛掛金額ハ年掛掛金額ニ其ノ百分ノ二ヲ加ヘタルモノヲ二分シタル額トシ、三月掛掛金額ハ年掛掛金額ニ其ノ百分ノ三ヲ加ヘタルモノヲ四分シタル額トス。

「定期年金」分割拂年掛掛金表

第十四表

■年金年額百圓=對スル場合

Table with columns for age (契約年齢), payment start age (十二歳支拂開始, 十五歳支拂開始, 十七歳支拂開始, 二十歳支拂開始), and payment type (五年定期, 十年定期). Rows list ages from 1 to 15.

備考 半年掛掛金額ハ年掛掛金額ニ其ノ百分ノ二ヲ加ヘタルモノヲ二分シタル額トシ、月掛掛金額ハ年掛掛金額ニ其ノ百分ノ五ヲ加ヘタルモノヲ十二分シタル額トス。

「定期年金」分割拂年金額表

第十五表

■月掛掛金一圓=對スル場合

Table with columns for age (契約年齢), payment start age (十二歳支拂開始, 十五歳支拂開始, 十七歳支拂開始, 二十歳支拂開始), and payment type (五年定期, 十年定期). Rows list ages from 1 to 15.

「定期年金」一時掛金表

第十六表

■年金年額百圓=對スル場合■

契約年齢	十二歳支拂開始		十五歳支拂開始		十七歳支拂開始		二十歳支拂開始	
	五年定期	十年定期	五年定期	十年定期	五年定期	十年定期	五年定期	十年定期
1	318.02	577.77	283.10	512.78	261.44	473.33	231.74	419.67
2	330.15	599.96	293.96	532.71	271.56	491.79	240.82	436.23
3	342.74	623.04	305.24	553.41	282.07	511.02	250.26	453.44
4	355.73	646.92	316.95	574.82	292.92	530.95	260.02	471.26
5	369.16	671.63	329.05	596.98	304.17	551.61	270.14	489.74
6	383.07	697.25	341.59	620.04	315.88	573.04	280.63	508.94
7	397.47	723.88	354.60	644.00	328.03	595.29	291.53	528.94
8	412.41	751.55	368.08	668.87	340.63	618.46	302.84	549.72
9	427.91	780.23	382.05	694.67	353.70	642.54	314.63	571.31
10	443.97	810.02	396.54	721.54	367.26	667.56	326.89	593.76
11	—	—	411.60	749.51	381.35	693.57	339.62	617.16
12	—	—	427.28	778.56	395.96	720.67	352.85	641.53
13	—	—	443.52	808.75	411.16	748.88	366.59	666.87
14	—	—	—	—	426.97	778.17	380.86	693.20
15	—	—	—	—	443.35	808.60	395.65	720.62
16	—	—	—	—	—	—	411.02	749.11
17	—	—	—	—	—	—	426.94	778.59
18	—	—	—	—	—	—	443.40	809.11

昭和十七年三月十五日印刷
昭和十七年三月二十日發行

保險院簡易保險局

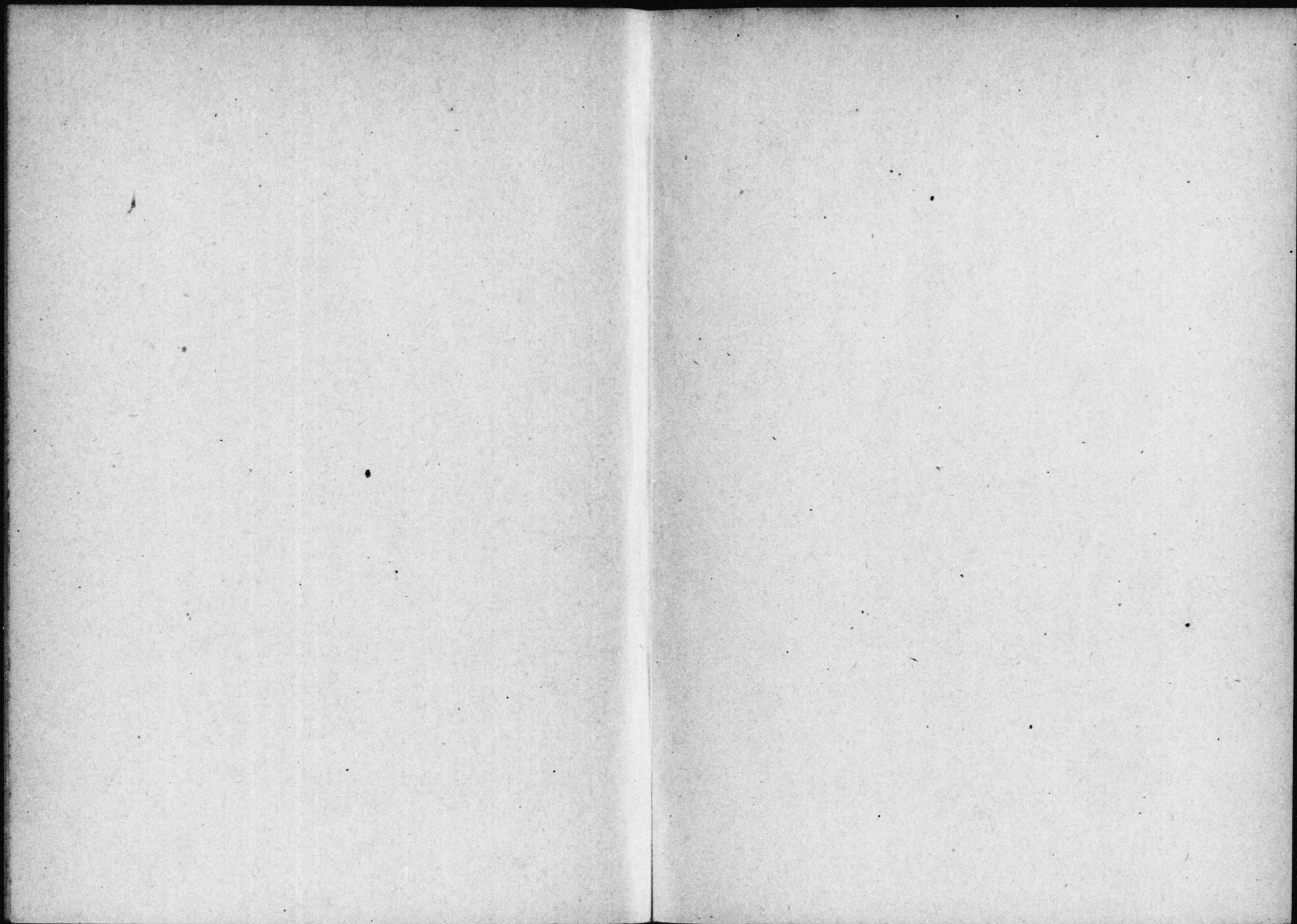
東京市牛込區西五軒町三十四番地

印刷者 芳賀丈夫

東京市牛込區西五軒町三十四番地

印刷所 福山印刷製本株式會社

電話牛込(34)六五六一番



14.4
497

