

SERIES 1501 AIR SHEET NM 37-11 EDITION 3

SERIES 1501 COMPANION SHEET IS EDITION 2

POPULATED PLACES
Over 100,000
50,000 to 100,000
10,000 to 50,000
2,000 to 10,000

ROADS
Dual highway
All weather, hard surface
More than two lanes wide
Two lanes wide
One lane wide
All weather, loose or light surface
More than two lanes wide
Two lanes wide
One lane wide
Fair or dry weather, loose surface
Track or trail
Route marker

RAILROADS
Normal gauge 1.52m (5')
Narrow gauge

BOUNDARIES
International
First-order administrative division
Second-order administrative division
Reservation

OTHER FEATURES
Landmark
Horizontal control point
Lever, burial mound
Mine

VEGETATION
Woods
Orchard or vineyard

HYDROGRAPHY
Well, perennial, intermittent
Intermittent stream: Single, double line
Disappearing stream: Swamp or marsh
Intermittent lake: Dry lake

TERRAIN ELEVATIONS
Spot elevation: normal, critical
HIGHEST KNOWN ELEVATION IS 1204 feet at the following coordinates:
Geographic 48°18'N 38°53'E
Grid 3709148

AERODROMES (Military or Civil)
Runway pattern known
EDNA-Name
50-Length of longest runway to nearest hundreds of feet
5-Soft or unimproved surface
u-Unknown surface
725-Elevation
Runway pattern unknown

HELIPORT/HELIPAD
HELIPORT/HELIPAD AT HOSPITAL

RADIO FACILITIES
RADIO RANGE LF/MF
MULTIPLE RADIO FACILITIES

CONTROLLED AIRSPACE
ADIZ
ATLANTIC ADIZ

VISUAL AIDS AND OBSTRUCTIONS
Obstruction
1100-Elevation of obstruction top, above sea level.
(259)-Elevation of obstruction top, above ground level.
Group obstruction
Radio facility obstruction
Power transmission line
Visual ground sign
Aero light; Marine light

CAUTION
Vertical obstructions, including powerlines, have been extracted from the most reliable sources available. However, there is no assurance that all are shown, or that their locations or heights are exact.

CAUTION
AIR INFORMATION CURRENT THROUGH 12 JULY 1981
Consult NOTAMS and Flight Information Publications for the latest air information, the DOD Aeronautical Chart Updating Manual or MDD (U.K.) Aeronautical Chart Amendment document, for other chart revision information.

LINES OF EQUAL MAGNETIC VARIATION FOR 1990 (Annual rate of change, no change)

ATTENTION
THIS CHART CONTAINS MAXIMUM ELEVATION FIGURES (MEF)
The Maximum Elevation Figures shown in quadrangles bounded by ticked lines of contour height are represented in FIGURES and NUMBERS of feet above mean sea level. The MEF is based on information available concerning the highest known elevation in each quadrangle including terrain and obstructions (towers, antennas, etc.).
EXAMPLE: 1200 feet

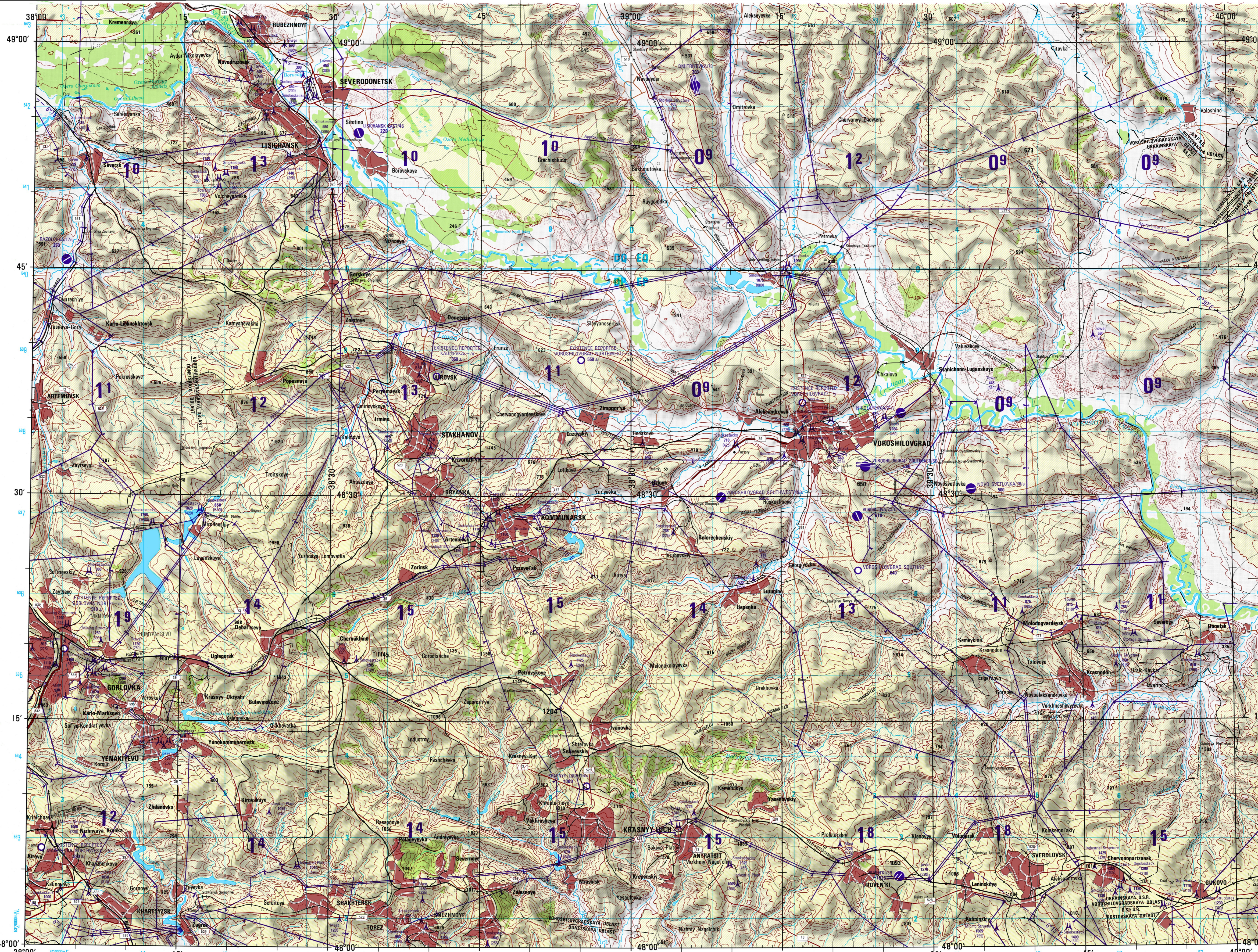
LOCATION DIAGRAM
GRID INDEX SHOWN IN RED (BROWN)

CONVERSION OF ELEVATIONS
FEET METERS
1000 305
500 152
400 122
300 91
200 61
150 46
100 31

SCALE 1:250,000
VOROSHILOVGRAD, SOVIET UNION

SERIES 1501 AIR SHEET NM 37-11 EDITION 3

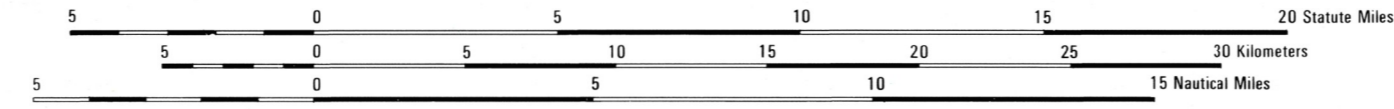
SERIES 1501 COMPANION SHEET IS EDITION 2



Prepared and published by the Defense Mapping Agency Hydrographic/Topographic Center, Washington, D.C. Compiled May 1980

JOINT OPERATIONS GRAPHIC (AIR)

SCALE 1:250,000

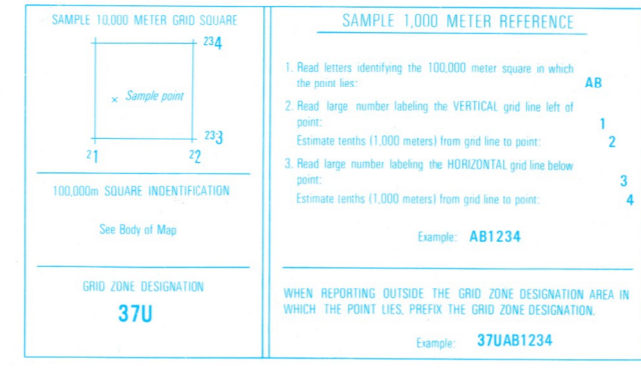


CONTOUR INTERVAL APPROXIMATELY 70 FEET

FOR REFERENCE, GRID AND GEOGRAPHIC VALUES MAY BE CONSIDERED AS EITHER EUROPEAN OR WORLD GEODETIC SYSTEM DATUM SINCE POSITION PLOTTING DIFFERENCES ARE NOT SIGNIFICANT AT THIS SCALE.

CONVERSION OF ELEVATIONS

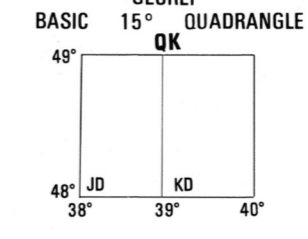
FEET	METERS	FEET	METERS
1000	305	10000	3048
900	274	9000	2743
800	244	8000	2438
700	213	7000	2134
600	183	6000	1829
500	152	5000	1524
400	122	4000	1219
300	91	3000	914
200	61	2000	610
150	46	1500	457
100	31	1000	305



BLUE NUMBERED LINES INDICATE THE 10,000 METER UNIVERSAL TRANSVERSE MERCATOR GRID, ZONE 37, WORLD GEODETIC SYSTEM SPHEROID

GLOSSARY

Balka	ravine
Blizna	scar
Obilny	second-order administrative division
Ozero	lake
R.S.F.S.R.	first-order administrative division
S.S.R.	second-order administrative division
Stantsiya	station
Vodokanalizatsiya	reservoir



RELIABILITY OF THIS GRAPHIC

Compiled from best available source materials.
Horizontal Datum: World Geodetic System
Vertical Datum: Mean Sea Level
Transverse Mercator Projection

ELEVATION TINTS

660
330
BSL

Printed by the Defense Mapping Agency Hydrographic/Topographic Center 9-91

Reprinted by NIMA 05-02

NOTES

Powerlines are shown except within populated place tints. Other obstructions are shown if they are 61 meters or above ground level. See caution note.
Road classification should be referred to with caution.
On this graphic a lane is generally considered as being 8 feet (2.5 meters) in width.
Names for non-synthesized populated places are omitted where information is not available, or where density of detail does not permit their inclusion.
Alignment of all boundaries is approximate.

NSN 7641014104321
NIMA Ref No. 1501ANM3711
ED NO.003

USERS SHOULD REFER CORRECTIONS, ADDITIONS, AND COMMENTS TO THE NIMA OPERATIONAL HELP DESK: 1-800-455-6899; COMMERCIAL: 214-353-4864; OR WRITE TO: DIRECTOR, NATIONAL MAPS AND MAPPING AGENCY, ATTN: ES, MAIL STOP L-88, 4800 SANGAMORE ROAD, BETHESDA, MD 20815-5003.