

# The Campbell Visitor

VOL. 9, No. 36

CAMPBELL, SANTA CLARA CO., CALIFORNIA, FEBRUARY 13, 1904

\$1.00 A YEAR

## THE CELEBRATION.

### Campbell Will Try to Outdo Former Events.

Tonight (Saturday) the Board of Trade will meet to receive reports from committees appointed for the Old Settlers' Day celebration. A full attendance is urged as final arrangements for the day must be made.

The committee on speakers it is announced have secured Prof. Page of the State University for the main address, and have also secured Andrew P. Hill, who is to represent the Sempevirns

The following committees have charge of the celebration:

Elgin C. Hurlbert, chairman of program committee.

Speakers—F. M. Righter, Mrs. L. F. Shaw, W. H. Blodgett.

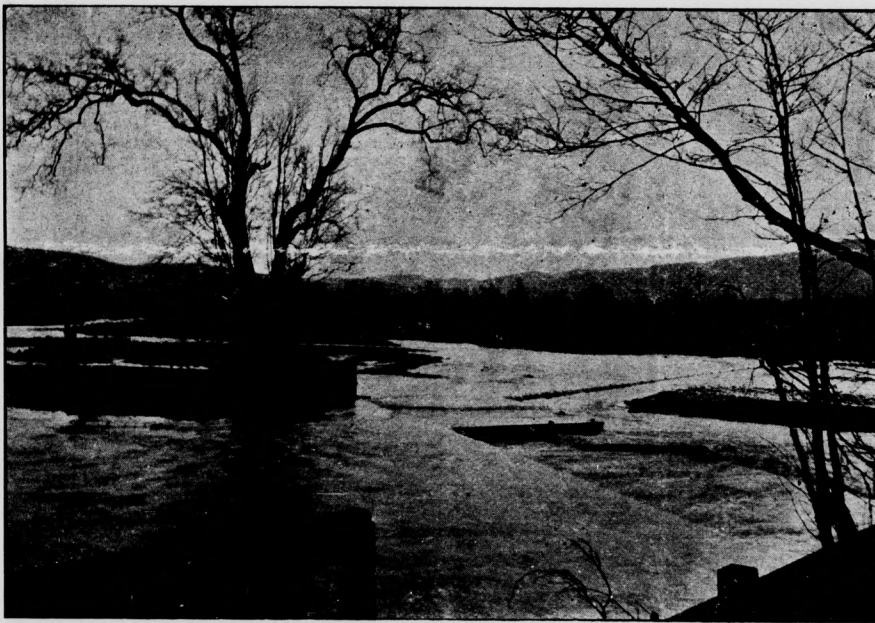
Finance—J. F. Duncan, Dr. C. N. Cooper, L. D. Downing.

Hall—S. G. Rodeck, Jas. Relfe, Charles White, Charles Townsend, S. L. Hayes.

Decorating—Mrs. Wm. Moore, Mrs. Frank Duncan, Mrs. George Whitney, Miss Charlotte Davis, J. C. Lloyd.

Tables and serving—Mrs. C. R. Lewis, Mrs. O. H. Dosh, Miss

THE war between Japan and Russia is the chief theme of interest in the daily papers now. The Japanese have surprised their enemies by their fast and furious fighting. They have already sunk or disabled or captured several vessels of the Russian fleet making them, it is said, master of the naval situation. What will be the result of land engagements remains to be seen, but all prophecies are in favor of a final Russian victory in a long fight, owing to Russia's superior resources. The two armies had an opportunity to study the



LOS GATOS CREEK, SHOWING DAM AND HEADGATE OF DUNCAN IRRIGATING DITCH

Club, and Rev. E. S. Williams is to present the subject of "Rural Telephone."

The music committee have secured for the occasion the two Stanford Glee Clubs, a chorus of thirty voices (young ladies and young gentlemen). They will give a program of two hours or more, according to the time allotted to them.

This fine concert will be entirely free to all who attend, and in order to make it so, the committee in charge have undertaken to raise the necessary funds. In this they will need the liberal help of all interested which will no doubt be promptly accorded. Any who desire to help in this matter may report to any member of the music committee.

Dawson, J. W. Evans, Russel Kennedy, Walter Copley.

Refreshments—Mrs. D. Fore, Mrs. S. R. Wade, Mrs. Chas. Berry, Harry Carder, Vaughn Lloyd.

Music—Mrs. Hartman, Mrs. Hurlbert, Professor Powers.

Reception—B. Campbell, P. G. Keith, Senator Conklin, Prof. E. Janes, W. H. Swope, Prof. J. F. Smith, Frank O. Putnam, Mrs. J. C. Ainsley, Mrs. C. H. Whitman, Mrs. M. J. Gates, Mrs. S. G. Rodeck.

The committee will furnish tea, coffee, sugar and milk and all are urged to bring well filled baskets that the strangers within our gates may not go away hungry! Come and make a day of pleasure. If it rains don't let that keep you home—we can stand it.

methods each of the other when they advanced together upon Pekin. It is said that on that occasion, the Russians were placed in advance of the Japanese whose movements were so much more rapid that they were obliged to request the Russians to allow them to pass. Judging from the tone of newspaper reports, popular sympathy in this country is with the Japs, whose national institutions and individual characters are more in harmony with American views than those of the Russians.

The copious rain we have been having has set the creek going and the irrigating ditches are all running—the Kirk, Duncan, Statler and Page—with large streams.

## CAMPBELL

(THE ORCHARD CITY)

Lies 50 miles south of San Francisco on the Santa Cruz division of the Southern Pacific Railway, 5 miles from San Jose, in the famous Santa Clara Valley, the garden spot of the State.

### SCENERY SUPERB

With the Santa Cruz Mountains to the west and south and the Coast Range on the east, a majestic amphitheatre is formed, the beauty of which can not be excelled anywhere. Campbell has an altitude of 195 feet. The cool breezes from San Francisco bay at the north insure an even and comfortable temperature throughout the summer months, while the winters are warm and pleasant. Flowers bloom out of doors the year around.

### EDUCATIONAL ADVANTAGES

Campbell has a population of about 600. It maintains a (third class) post-office which distributes mail to 3,000 patrons, covering over 30 square miles of orchard homes. There are two churches—Methodist and Congregational—a first class High School and Graded School, and within a few miles are two Universities, two Colleges, a State Normal School and several Business Colleges and private schools.

The Stanford University with its marvelous architecture is only 20 miles away.

### NO SALOONS

Campbell has a complete water system of its own. It has electric lights and power for mechanical purposes, which is distributed throughout the orchard district. A telephone exchange serves over 40,000 people. A prohibitory clause in all deeds to property within the town limits, prevents the saloon from being established.

### FINE ROADS AND RESORTS

The Santa Clara Valley boasts of the finest roads to be found in the State. It has over 350 miles of sprinkled rural highways. In attractions for tourists the Santa Clara Valley can not be surpassed. Thirty-two miles eastward over a magnificent mountain road is the famous Lick Observatory on Mt. Hamilton, 4,444 feet above sea level. There are numerous mountain retreats within two hours' drive for those who love the camp and sparkling brook. The sea beach to the southward 27 miles by rail or carriage drive, and through the most beautiful mountain scenery in the world.

A trip to the Big Trees, twenty feet in diameter and two thousand years old, will furnish a delightful day's outing.

### MINERAL SPRINGS

The hot springs of Alum Rock Canyon and Congress Mineral Springs are within two hours' drive, giving a panoramic view of the entire valley.

The Almaden Quicksilver Mines, the largest in the world are within easy access by rail or team.

The largest seed farms in the world only 10 miles distant.

### FRUIT CENTER

Campbell's mammoth fruit dryer and packing house is the largest in the world. It has a capacity of over 10,000,000 lbs.

The Campbell Orchard District is noted for the quality of its fruits. For delicacy of flavor and beauty and perfection of color, its cherries, apricots, peaches, apples, plums, grapes and pears, have no equal in their fresh state, and command the highest market price. As cured or dried fruit the Campbell prune, apricot, and peach is shipped to every civilized country on the globe. Nearly one-half of all the prunes grown on the continent are from Campbell orchards. One and a half million cans of fresh fruits are packed in Campbell every season.

The demand for intelligent labor is increasing every year. Families desiring profitable employment in orchards, packing houses and canneries find this an ideal home.

### LAND VALUES MODERATE

Land values are very moderate—bare land brings from \$100 to \$300 per acre and when set to trees sells from \$200 to \$1,000 per acre, according to location and age of orchard. Ten to fifteen per cent is an average net income, while many places yield a much higher rate.

In short a Campbell home is one surrounded with HEALTH, WEALTH AND PLEASURE.

For literature and particulars, address  
HURLBERT & KENNEDY,  
Campbell, Cal.

**Men as Seen by Novelists.**

Success serves to sweeten the average man; unsuccess is the heroic test of heroes.—Eden Philpotts.

He who does good on the spur of the moment usually sows a seed of dissension in the trench of time.—Seton Merriman.

Happiness falls to our share in separate detached bits, and those of us who are wise content themselves with these broken fragments.—Beatrice Haraden.

Noisy fellows are always wedded to their own opinions, weak fellows to the opinions of others. The perfect man, conscious of his intellectual finitude, is content with aspirations.—Harold Begbie.

With men you must take your choice—liberty for your mind and a prison for your body, liberty for your body and a prison for your mind. Nearly all people choose the latter. We know what becomes of the few who do not.—James Lane Allen.

**Postmaster's Salaries.**

The Postoffice Department has completed the work of adjusting the salaries of Presidential postmasters on the basis of the business transacted during the last fiscal year. Results show that seventy-two postoffices in California have transacted such an increase of business as to justify a raise in salaries, while only seven officers have had the salaries reduced. Fifty-nine postmasters get an increase of \$10 each, seven get \$200 each, three \$300, one \$400 and one \$500. The total of increase was \$9100 and decrease \$1000. This is a good showing when compared with other states.—Santa Cruz Surf.

**The Advertising World.**

Do you do any kind of advertising by newspapers, booklets, circulars or by any other method? If so, you should know about our monthly containing information, plans, suggestions and ideas for advertisers. 8th year; 24 to 32 pages. Send to-day for free sample, or 10 cents for four months trial. Address, The Advertising World, Columbus, Ohio.

Fresh line of Jelly and Jam at Putnam's.

Allen's Boston Brown Bread Flour.

**WANTED—FAITHFUL PERSON TO TRAVEL** for well established house in a few counties, calling on retail merchants and agents Local territory Salary \$20.00 per week with expenses additional, all payable in cash each week. Money for expenses advanced. Position permanent. Business successful and rushing. Standard House, 330 Dearborn St., Chicago

**The Best Route East**

or the one that suits you best can be determined only by having choice of all. For full information about tickets over shortest, quickest and most pleasant roads to any eastern city call on C. Berry, agent, or write Division Freight & Passenger Agent, Southern Pacific, 16 South First St., San Jose, California.

**Rubber Stamps.**

We make a specialty of stamps for fruit trade. Prompt work and satisfaction. Quincy Calgeser Printing and Rubber Stamp Co., 24 West Santa Clara St., San Jose.

Fine Stationery 10c per box up at Putnam's.

**Dr. P. C. Hartman, DENTIST.**

Graduate Dental Department of the University of California.

Up to date work at reasonable rates warranted

**LIVER TROUBLES**

"I find Thedford's Black-Draught a good medicine for liver disease. It cured my son after he had spent \$100 with doctors. It is all the medicine I take."—MRS. (A. OLIVE) MARTIN, Parkersburg, W. Va.

If your liver does not act regularly go to your druggist and secure a package of Thedford's Black-Draught and take a dose tonight. This great family medicine frees the constipated bowels, stirs up the torpid liver and causes a healthy secretion of bile.

Thedford's Black - Draught will cleanse the bowels of impurities and strengthen the kidneys. A torpid liver invites colds, biliousness, chills and fever and all manner of sickness and contagion. Weak kidneys result in Bright's disease which claims as many victims as consumption. A 25-cent package of Thedford's Black-Draught should always be kept in the house.

"I used Thedford's Black Draught for liver and kidney complaints and found nothing to excel it."—WILLIAM COFFMAN, Marblehead, Ill.

**THEDFORD'S BLACK-DRAUGHT**

**Have you seen THE NEW LINE OF**

Men's and Boys' Overalls  
Socks  
Stockings  
Shirts  
Calico  
Ginghams  
Flannels  
Towelings  
Sheeting  
Dress Lining  
Muslin

Quilts  
Thread  
Pins  
Hair Pins  
Hooks and Eyes  
Elastic  
Buttons  
Cutlery  
Shears  
Knives  
Pruning Shears

Tinware  
Nails  
Oranges  
Apples  
Bananas  
Lemons  
Dates  
Figs  
Walnuts  
Almonds  
Boots and Shoes

AND A FULL LINE OF GROCERIES, AT

**BLODGETT'S**

**Dr. M. J. Gates Physician & Surgeon** **Chas. W. Davison Attorney at Law**

Telephone No. Red 101

Notary Public.  
Rooms 39 and 40 Rea Building, Market and Santa Clara Sts., San Jose. Telephone 401 Green.

**B. O. CURRY**

Real Estate and Insurance

Campbell, Cal

**John F. Duncan**

Notary Public

Office, Bank of Campbell

**C. H. Whitman**

**HARDWARE  
PLUMBING  
BICYCLES  
PAINTS, OILS, GLASS, ETC.  
CAMPBELL, CAL.**



**CAMPBELL HOME BAKERY**  
The Best Goods and Best  
Prices Still Prevail.

Campbell's Best Confectionery Stock  
Hot Bread Twice Daily.

**J. W. HUNT & SON.**



### Campbell vs. Hamilton School.

A spelling match has been arranged for Friday, February 19, at Campbell school, the Hamilton school being the other contestant. The program follows:

Class Yell—School—Harmon Bibb, Leader.

Address of Welcome—Class President, Ernestine Kennedy.

Song, "Mount Vernon Bells"—School.

Recitation—"Crown Our Washington"—Ivy O'Connor, Jessie Oliver, Lillian Appleby.

Original Story by Mildred Duncan—read by Cora Dunning.

Song—"Red, White and Blue"—School.

Recitation—"Washington's Birthday"—Frank Nelson, Ellen McMurray.

Song—"Independence Day"—Hazel Abbott, Lulu Vollmer; chorus—Seventh Grade.

Recitation—"Washington's Birthday"—Beulah Crow.

Piano solo—Ethel Lent.

Duet—"The Stars and Stripes Forever"—Ethel and Madge Clendennin.

Recitation—Cora Dunning.

Song, "Hail, Campbell, Hail!"

Original Poem—"Washington" by Ethel Clendennin, read by Claude Buttrick.

Duet—"United States" Mildred Duncan, Alice Abbott; chorus—Eighth Grade Girls.

Duet—Piano and Mandolin—Lena and Mamie McMurray.

Song—"California"—School.

Spelling Match—Campbell vs. Hamilton School—Sidney Shaw (Trapper), Ernestine Kennedy (Captain), Helen Owens, Fred Field (Substitute Trapper), Alice Abbott, Mildred Duncan, Guy Farley (Substitute), Claude Buttrick (Substitute), Willie Speegle, Beulah Crow, Hazel Abbott, Ellen McMurray, Frank Nelson (Substitute.)

"America"—School.

### A Beautiful Valentine.

St. Valentine's greeting to all who love to snuggle close to Nature's heart—a beautiful creation in water color, with a handsome 1904 bicycle girl for its center, her bloom of rosy health happily blending with the sunshine of an opening Spring. If you want one free, just drop postal to Pope Mfg. Co., Hartford, Conn., or Chicago, Ill.

### Profits in Eucalyptus.

At a recent meeting of the Pomona Farmer's Club, eucalyptus was handled and both sides of the question were discussed. With all the trees of this class that are grown in Southern California and in the Pomona valley there was but one block of eucalyptus trees that could be used as reliable data from which to draw conclusions. This was a large five-acre grove that had been cut every five years. It was irrigated during the first three years of its life, but none after that. It had netted on an average about \$24 per acre per year. There was no work to be done after the second year except suckering the stumps after the first year from cutting. The grove furnished besides the above returns, wood for the family for about ten years. The owner said that he did not have to lay awake nights wondering if the frost would kill the trees or spoil the crop.

Remarkable instances of root growth were reported. One member, who is zanjero for a water company, said that he had occasion to open a water pipe and clean it from a partial obstruction, and found that blue gum roots had entered and followed on the inside of the pipe for a distance of 280 feet from the point of entry. In another case where the pipe had become entirely closed, the roots of an Eucalyptus globulus had reached nearly 500 feet from the tree. In these cases the roots were free to grow in running water.

This propensity of the tree brought out the question as to the advisability of planting them as a windbreak for orchards. It was the opinion of all present that it is an expensive tree for that purpose as it is a robber among trees. The products of trees in solid blocks was not considered a proper basis for calculations of profits. The conclusions of those present who were in position to judge fairly, was that eucalyptus is a good thing for those to plant who have other means of support and enough to carry on the work of planting a grove and can afford to wait several years for returns.

Onion Skin Tablets at Putnam's.

Hurlbert & Kennedy have two good cottages for rent.

# New Confectionery and Bakery



I have recently remodeled and stocked my store with everything fresh in the confectionery line. Our cakes, pies and doughnuts are home made, also our tamales. There is a lunch room in connection, where light lunch is served. Fresh roasted peanuts and soft drinks always on hand.

Tobacco, cigars, stationery, jewelry, and a light line of groceries.

Pies and cakes made to order.

Electric lighted; store and lunch rooms papered and painted.

Your patronage appreciated.

Next door to postoffice.

**T. V. DYER  
CAMPBELL**

**HURLBERT  
AND  
KENNEDY**

**Campbell's  
Real Estate  
Agents**

Hurlbert & Kennedy will sell your Real Estate or Insure your property.

I. O. O. Building  
Campbell

### NOTICE!

W. H. Brown's barber shop is now managed by E. R. Armstrong of Berkeley. College style of hair cutting a specialty. Give me a call. E. R. ARMSTRONG, Mgr.

# THE CAMPBELL VISITOR.

PUBLISHED EVERY SATURDAY

FULTON PHILLIPS } Proprietors  
DELMONT PHILLIPS }  
HURLBERT & KENNEDY, Lessees

Subscription, \$1.00 a Year in Advance  
Advertising Rates, 50c. an Inch per month

Entered at the Postoffice at Campbell, California, as second-class mail matter

THE rain now coming is worth millions to the State.



LET everyone help to make our annual celebration a success.



LATE telegraphic advices indicate that the Japanese have demolished practically the entire Russian fleet at Port Arthur, and prospects good for capturing the port. Judging from present indications the little brown men will be more than a match for the Russians in land fighting. Already bridges and railroads have been blown up.



THE Highway Club are debating as to the advisability of planting trees on Arbor Day as was done last year, trusting to the possibility of rain enough to keep them alive. This present rain will probably be sufficient encouragement to decide the matter favorably. There are many parts on our streets about town yet unadorned with shade trees. Now is a good time to plant. Nothing so adds to the attractiveness of a place. Homes with a western or southern front find them almost a necessity, during the long summers. Deciduous trees are most desirable for this purpose, those which shed their leaves early being most highly recommended.



EVERYONE who goes to Southern California is impressed with the daring confidence evidenced in the undertakings of the people there. It is generally acknowledged that this spirit more than any real advantages the country possesses have made it what it is. Yet many about this section regard it as almost a sin to describe in glowing terms the beauties of our valley, inducing persons to come here who may perhaps be dissatisfied or unfortunate in their investments. We are not afraid that with courage and energy any one can fail here, though there may be periods of discouraging circumstances, such as occur in any spot on the globe. There are doubtless many places where more money can be made but money is not everything. Confidence and push will make this country greater than the Southern country because it has greater resources. A timorous policy would keep it at a standstill for years.



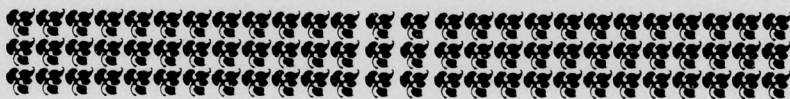
THE following remarks from the Youth's Companion emphasize a danger which has been in the minds of everyone at some time or other. Packed houses are not of infrequent occurrence in our village where the audience rooms are most of them small. Some measures have already been taken against over-crowding some of the places. The M. E. church official board have forbidden the placing of chairs in the aisles. The trustees of the Odd Fellows' Hall have removed the gasoline stove and put in a range, and are making arrangements for the placing of a fire escape. While none of our public buildings are especially exposed to danger from fire, they are none of them fire proof and some extra precautions are necessary in all of them.

"Not a large city in the civilized world was unaffected by the Chicago theater disaster. The people at once sought to know whether the halls and theaters in which they congregated were safe or not. The managers of all of them attempted to reassure the public, and in many cities an official investigation was made into the precaution against fire. London, Paris and Berlin were as deeply concerned as New York, Boston and San Francisco.

"Towns and villages in this country, without theaters and without fire departments, are threatened several times a year with disasters proportionately as terrible as that in Chicago.

"Probably every church is crowded so full at Christmas or at Easter, or on some other festival occasion, that escape would be impossible for scores, or even hundreds, if the building should get on fire. Chairs are put in the aisles and all standing-room is occupied. So long as it is possible for anyone to get inside he is allowed to enter. It does not take a vivid imagination to picture the horrors that would follow the flame among Christmas evergreens.

"Public halls in small towns are usually on the second floor of a wooden building, and are reached by a single narrow stairway. Danger from fire is greater in them than in the churches. In the cities public sentiment can induce the proper officers to enforce such regulations as exist, but in the country there can be only the moral compulsion of public sentiment to impel the owners of the halls and the trustees of the churches to take all possible precautions."



## WE WANT YOUR MONEY,

But not at the expense of your esteem.

Hence we give  
"VALUE RECEIVED"  
every time.

## CORN IS HIGH!

Canned corn is very high—ranges from 12½c. to 20c. can. If you must have corn—we have it to sell. But we also have two good substitutes:

Pyle's Fancy String Beans and  
Pyle's Sugar Peas  
Only

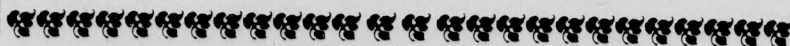
## 10 Cents Per Can

These goods are first-class in every respect—raised and packed in our own county. There is nothing better put up in the State.

Pyle's Tomatoes are fine—ask for the BERRYESSA BRAND—you are sure to like them—10c., 3 for 25c.

Ainsley's Extra Solid Packed Tomatoes—2 cans 15c., 7 for 50c.

## FARMERS UNION





**LOCAL NOTES.**

The next quarterly Coast Counties Convention takes place at Santa Clara Thursday of next week. Campbell will be represented by delegates to be elected Saturday night at the Board of Trade meeting.

An open meeting of the Grange will be held Feb. 23rd, to voice the opposition of our people to the encroachments of the Bay City Water Company. Members of the Home Protective Association of San Jose will be present to take part in the discussion.

Miss Maud Banks, a sister of Mrs. J. C. Lloyd, will represent the University of the Pacific at the Intercollegiate debate with the University of Southern California. Miss Banks has frequently won honors of this kind by her brilliant oratory. Her team mate is Harold Tuttle of San Jose.

**Beautiful Winter Trip. Sunset-Gulf to New York.**

Famous Sunset Route to the Mardi Gras city, New Orleans. New Sunset passenger steamers thence around Florida to New York. Low rates. Call on C. Berry, agent, or write Paul Shoup, Division Freight and Passenger Agent, San Jose, Cal.

**Allen's Boston Brown Bread Flour.**

**NOTICE TO CREDITORS.**

ESTATE OF WESLEY INGELS, Deceased. Notice is hereby given by the undersigned executrix and executor of the last Will of Wesley Ingels, deceased, to the creditors of and all persons having claims against the said deceased, to exhibit the same, with the necessary vouchers, within ten months after the first publication of this Notice, to the said executrix and executor at the law office of R. R. Syer, Rooms 3 and 4, Bank of San Jose Building, No. 6 North First Street, in the city of San Jose, county of Santa Clara, State of California, the same being the place for the transaction of all business pertaining to said estate.

San Jose, this 18th day of January A. D. 1904.  
 JANE INGELS,  
 OSCAR L. INGELS,  
 Executrix and Executor of said Last Will of Wesley Ingels, Deceased.  
 R. R. Syer, Attorney for Executrix and Executor.



**R. R. Time Card**

**GOING NORTH.**

To San Francisco Daily, Ex. Sun. 6.45 a. m.	N. G.
" " " " Ex. Sun. 7.10 "	B. G.
" San Jose only, Daily " " " " 7.30 "	N. G.
" S. F., Daily, " " " " 8.36 "	"
" " " " " " " " 3.28 p. m.	N. G.
" " " " " " " " 5.08 "	"
" " " " " " " " 5.25 p. m.	B. G.
" " " " " " " " 3.00 "	"

**GOING SOUTH.**

To Sta Cruz, Fr't. Daily Ex. Sun. 8.35 a. m.	N. G.
" " " " " " " " 10.32 "	"
" " " " " " " " 1.35 p. m.	B. G.
" " " " " " " " 4.30 p. m.	N. G.
" " " " " " " " 5.08 "	"
" " " " " " " " 6.30 "	"
" " " " " " " " 6.48 "	B. G.

**Cheap Rates.**

San Francisco and return Saturday afternoon and Sunday morning good to return until Sunday afternoon \$2.05  
 To Santa Cruz and return Sunday only \$1.75

**CAMPBELL BOARD OF TRADE**

**OFFICERS AND DIRECTORS.**

Elgin C. Hurlbert.....	President
J. C. Lloyd.....	First Vice President
F. O. Putnam.....	Second Vice President
C. H. Whitman.....	Secretary
J. F. Duncan.....	Treasurer
B. Campbell.....	James Relfe
S. R. Wade.....	L. D. Downing
W. H. Blodgett.....	Dr. B. C. Hartman
F. M. Righter.....	Prof. J. F. Smith
B. O. Curry.....	Charles Berry

**CAMP MOORPARK, 671.**

WOODMEN OF THE WORLD, meets the first and third Saturday of every month. Sojourning neighbors are invited to attend.  
 W. G. McCAUGHEY, Council Com.  
 E. A. BARKER, Sec

**ADA REBEKAH LODGE NO 223,**

I. O. O. F., meets the first and third Tuesday of every month at 7:30 p. m. in the I. O. O. F. Hall. Sojourning sisters and brothers cordially invited to attend.  
 EMILY DUNCAN, Noble Grand  
 GRACE BLODGETT, Secretary.

**PALM LEAF COUNCIL, 560 F. A. A.**

meets the second and fourth Saturdays of each month at 7:30 p. m. in the I. O. O. F. Hall. Sojourning members are cordially invited to attend.  
 P. C. HARTMAN, President  
 MRS. H. E. BRANDENBURG, Secretary

**ORCHARD CITY GRANGE No. 333.**

Meets the second and fourth Tuesday of the month at 7:30 o'clock p. m. in I. O. O. F. Hall. Sojourning members cordially invited.  
 F. P. MITCHELL, Worthy Master.  
 MRS. F. O. PUTNAM, Worthy Secretary.

**WIDE-AWAKE LODGE D OF H 114**

meets on second and fourth Mondays of each month at I. O. O. F. Hall  
 MRS. CARRIE WATSON, Chief of Honor.  
 MRS. EMILY FORB, Recorder.

**MORNING LIGHT LODGE, No. 42,**

I. O. O. F., meets every Thursday evening at 7:30 o'clock in the I. O. O. F. Hall. Sojourning brothers are cordially invited to attend.  
 W. G. McCAUGHEY, Noble Grand.  
 W. R. COUPLAND, Secretary.

**PRIDE OF THE VALLEY LODGE**

No. 415 A. O. U. W. meets 1st and 3rd Monday, 7:30 p. m. in I. O. O. F. Hall. Sojourning brothers are cordially invited to attend.  
 J. W. LANCASTER, Master Workman.  
 CHARLES BERRY, Recorder.

**Mildreth Spencer-Hartman**

TEACHER OF VOCAL MUSIC

Tone work and expression given especial attention. Graduate King's Conservatory of Music, and pupil of the great German Tenor, Anton School. Studio, Campbell avenue

Voices Tried Free of Charge

**Brilliant Gasoline Lamp**

For Homes, Stores, Etc.

For further Particulars see

S. L. HAYES, Campbell

**Clark Bros.**

222 South First Street  
 Near City Hall

Manufacturers of

**ORCHARD, FARM AND DRIVING HARNESS.**

Repairing done at moderate prices.

Telephones: Office, Main 91  
 Residence, James 2581.

**W. L. Woodrow**

FUNERAL DIRECTOR AND EMBALMER.

117 South First Street,  
 San Jose, Cal.

**FRANK O. PUTNAM**

DEALER IN

**Dry Goods and Groceries**

Cigars and Tobacco  
 Stationery, Magazines, Etc.

**TELEPHONE RED 84**

SAMUEL F. COOPER, President  
 BENJ. CAMPBELL, Vice President  
 JOHN F. DUNCAN, Cashier

**The Bank of Campbell**

A general banking, exchange, loan and collection business transacted. Exchange direct on New York, Chicago and San Francisco. Accounts solicited.

**DIRECTORS**

R. K. Thomas	S. G. Rodeck
J. C. Ainsley	W. W. Turney
Benj. Campbell	S. R. Wade
E. I. Price	Samuel F. Cooper
F. G. Keith	Dr. C. N. Cooper
John F. Duncan	

E. R. GUMMER, President  
 M. A. BOULWARE, Secretary

**SAN JOSE UNDERTAKING CO.**

FUNERAL - DIRECTORS

—AND—  
**EMBALMERS.**

Lady Assistant if Desired.

51, South Second Street, San Jose.  
 Phone Main 293 8-40

**J. C. LLOYD**

**Blacksmithing**

In all Departments at the old stand in Campbell. You know my way of doing business, and why should I enlarge?  
 38

**W. H. SWOPE**

REAL ESTATE AND INSURANCE.

First-class list of orchard and town property for sale.

Campbell, Cal.

**SUNSET ROUTE**

In winter the comfortable route to all principal points East.

**No Snow. No Ice. Quick Time.**

Tourist excursions in through cars to

Chicago,  
 Cincinnati,  
 Washington,  
 St. Louis.

Standard sleepers with observation cars.  
 Dining cars.

Call on Agent, C. BERRY, or PAUL SHOUP, Division Freight and Passenger Agent, San Jose.

**SOUTH'RN PACIFIC**

Residence, Campbell.

**A. E. HARRIS,**  
 Attorney at Law.

First National Bank Building, San Jose  
 Southwest corner First and Santa Clara streets  
 Telephone, Blue 11

## LOCAL NOTES.

Subscribe for the VISITOR.

Blue Point Oysters at Putnam's.

Mrs. Southerland of San Jose is the guest of Mrs. B. Campbell this week.

Mr. and Mrs. Ayres are entertaining their daughter and son-in-law, Judge and Mrs. Boyd of Nealigh, Kansas.

Born:—To Mr. and Mrs. V. Straub, (nee Nonie Scholz) Campbell, Calif., February 9th, 1904, a boy.

Mrs. Josie O'Banion and little daughter of San Jose are spending a few days with relatives about town.

Measles are quite prevalent about town. Among the new cases are Clifford Berry and Abbie Gilbert. Both of them are doing nicely.

The Interurban railway ran their first car to Los Gatos from San Jose, Wednesday evening, taking a crowd of business men to the Chamber of Commerce banquet.

W. A. Kennedy has resigned his position as Assistant Superintendent of the Boys' and Girls' Aid society to become the Supervisor of Manual Training in the Alameda public school.

Mrs. Jane Ingels has gone to San Diego to visit her sister, expecting to spend some time there. She was accompanied as far as San Francisco by Mrs. Oscar Ingels who will visit a few days in the city before returning.

Patronize your local paper; buy it and read it; advertise in it; write for it. That will make business good in your town. It may be only a pebble thrown in the water, but small pebbles make large circles.—Ad-Writer.

The surveying corps of the San Jose Railroad Company have been at work on another route from the Willows to Campbell. The new line will be through orchards where it will be necessary to buy the right of way.

Fred Tibbets was highly honored by the government when on sending in his report on irrigation, he was rewarded with a check for twice the amount agreed upon, with a strong commendation of the quality of his work.

Allen's Boston Brown Bread Flour.

Mrs. Mae Gutherie Tongier, State worker for the W. C. T. U. will speak in the Congregational church the evening of the 22nd, and hold an all day Institute in the M. E. church and speak in the evening of the 23rd. She will also deliver an address in the M. E. church on Sunday evening the 28th. A basket lunch at noon the day of Institute.

The Oriole is now under new management, its former efficient editor and manager, Miss Maud Farley and Milton Francis, having resigned on account of the difficulty of attending to their work while residing in the country. In their places were elected Miss Della Kennison and George Schuyler, who have taken hold of their work with much vigor and will doubtless keep the paper up to its excellent standard.

There will be a Union Service under the auspices of the W. C. T. U. in the Congregational church on Sunday evening, Feb. 14. It is planned to have this "An evening's study of home problems." The program will be in charge of the State Superintendent of Mother's Meetings, Mrs. Effie D. Whitman, of San Jose, and will include some of the following topics presented by home talent:—"Hereditry and environment of Miss Willard's home;" "The father's responsibilities and duties in the home;" "The mother in the home;" "Children of the Willard Home" etc., all of which promise to be both enjoyable and profitable. Let there be a full house.

THE effect of the war in the east upon the price of many commodities has already been felt. Rice will doubtless be out of reach before long, being to the Japs even more than beans are to Americans. Matting and all sorts of Oriental art goods will become valuable in proportion to their scarcity. The Japanese Government has already forbidden the exportation of camphor, which is a product exclusively of Japan and Formosa; it is essential to the manufacture of smokeless powder and they naturally want a monopoly of it.

## WHITE WYANDOTTE

Stock and Eggs for sale. Good as there is.

W. H. STEWART,  
Williams Road, Campbell

## METHODIST CHURCH.

REV. J. F. JENNESS, Pastor.

The following services will be held next Sunday:  
10:15 a. m. Class meeting.  
11:00 a. m. Morning worship.  
12:15 p. m. Sunday-school.  
6:40 p. m. Senior and Intermediate Leagues.  
7:30 p. m. Evening worship.  
A cordial welcome will be extended to all these services.

## CONGREGATIONAL CHURCH.

REV. GEO. E. ATKINSON, Pastor.

We are always glad to see strangers at our services. We should be pleased to welcome you and to have you worship with us. Feel free to make this your church home.  
You will find our meetings bright, brief and brotherly.  
Services every Sunday morning and evening. Sunday School after morning service and Endeavor just preceding the evening service. Our midweek service is Wednesday evening.  
"Come thou with us and we will do thee good."

Services as usual both morning and evening. As this is Lincoln Sunday our morning service will be appropriate to the occasion. All members of the G. A. R. are cordially invited. The evening service will be a union meeting under the auspices of the W. C. T. U., it being the anniversary of Miss Willard's death. Mrs. Whitman, of San Jose will be the speaker.

Bible study class will meet at the home of Mrs. Schuyler this evening at 7:30 p. m.

Sunday school and Endeavor as usual.

## SUMMONS.

IN THE SUPERIOR COURT OF THE State of California, in and for the County of Santa Clara, Alida M. Wise, Plaintiff, vs. G. W. Wise, Defendant. Action brought in the Superior Court of the State of Calif., in and for the County of Santa Clara, and the Complaint filed in the office of the Clerk of said County of Santa Clara.

The people of the State of California send greeting to G. W. Wise, Defendant.

You are hereby directed to appear and answer the Complaint in an action, entitled as above, brought against you in the Superior Court of the State of California, in and for the County of Santa Clara, within ten days after service on you of this summons, if served within this County, or within thirty days if served elsewhere.

And you are hereby notified that unless you so appear and answer as above required, the said plaintiff will take judgment for any money or damages demanded in the Complaint as arising upon contract, or will apply to the Court for any other relief demanded in the Complaint.

Given under my hand and the seal of the Superior Court of the State of California, in and for the County of Santa Clara, this 6th day of January, A. D. 1904.

{Seal.} HENRY A. PEISTER, Clerk.  
By A. C. RUSS, Deputy Clerk.  
Cobb & Rea, Attorneys for Plaintiff

## NOTICE OF ADMINISTRATOR'S SALE OF REAL ESTATE.

Notice is hereby given by the undersigned N. L. Ross, Administrator of the estate of Sarah E. Ross, deceased, that the following described land of said estate will be sold at private sale to the highest bidder therefor for cash in hand, and bids will be received therefor in writing, at Room No. 18 Knox Block, in the city of San Jose, the Law Office of J. C. Black, attorney for said estate, commencing on the 27th day of February, 1904, at the hour of 9 o'clock a. m., and till 5 p. m. each day, continuing between said hours daily, except Sundays, till said sale is made. The land to be sold is described as follows to-wit: All that tract of land situated in the county of Santa Clara, State of California, being the South 30 acres of Lot 6 of the survey and map of the estate of John E. Ross, deceased, as recorded in the County Recorder's office of the county of Santa Clara in 1893 in Map "H" page 9. Said 30 acres of land is bounded on the North by 7 acres of land of said Lot 6, the land of the estate of Sarah E. Ross, deceased; on the East by the Kirk public road; on the South by the Branham Lane, and on the West by lands of N. L. Ross and Peter Polson, containing 30 acres of land. Bids in writing may be delivered for me to J. C. Black, Atty., at said office or to me personally at said office.

Dated this 2nd day of February, A. D. 1904.

NATHAN L. ROSS,  
Administrator of the estate of Sarah E. Ross, deceased.

Insure with  
Hurlbert & Kennedy.

50 YEARS' EXPERIENCE

# PATENTS

TRADE MARKS  
DESIGNS  
COPYRIGHTS & C.

Anyone sending a sketch and description may quickly ascertain our opinion free whether an invention is probably patentable. Communications strictly confidential. HANDBOOK on Patents sent free. Oldest agency for securing patents. Patents taken through Munn & Co. receive special notice, without charge, in the

## Scientific American.

A handsomely illustrated weekly. Largest circulation of any scientific journal. Terms, \$3 a year; four months, \$1. Sold by all newsdealers.

MUNN & Co., 361 Broadway, New York  
Branch Office, 625 F St., Washington, D. C.

## NOTICE

My store is open every day in the week from 7:30 a. m. to 7:30 p. m.  
Sundays: 9 a. m. to 1 p. m. Will gladly answer night calls when necessary.

If you have the **GRIP** use

Laxative Bromo Quinine.

If you have a **COUGH** use

COMPOUND SYRUP

White Pine and Tar

MENTHOLATED.

Always cures. Never fails.

P. F. Farrington

Telephone, Red 24.  
Odd Fellows' Building,  
CAMPBELL.