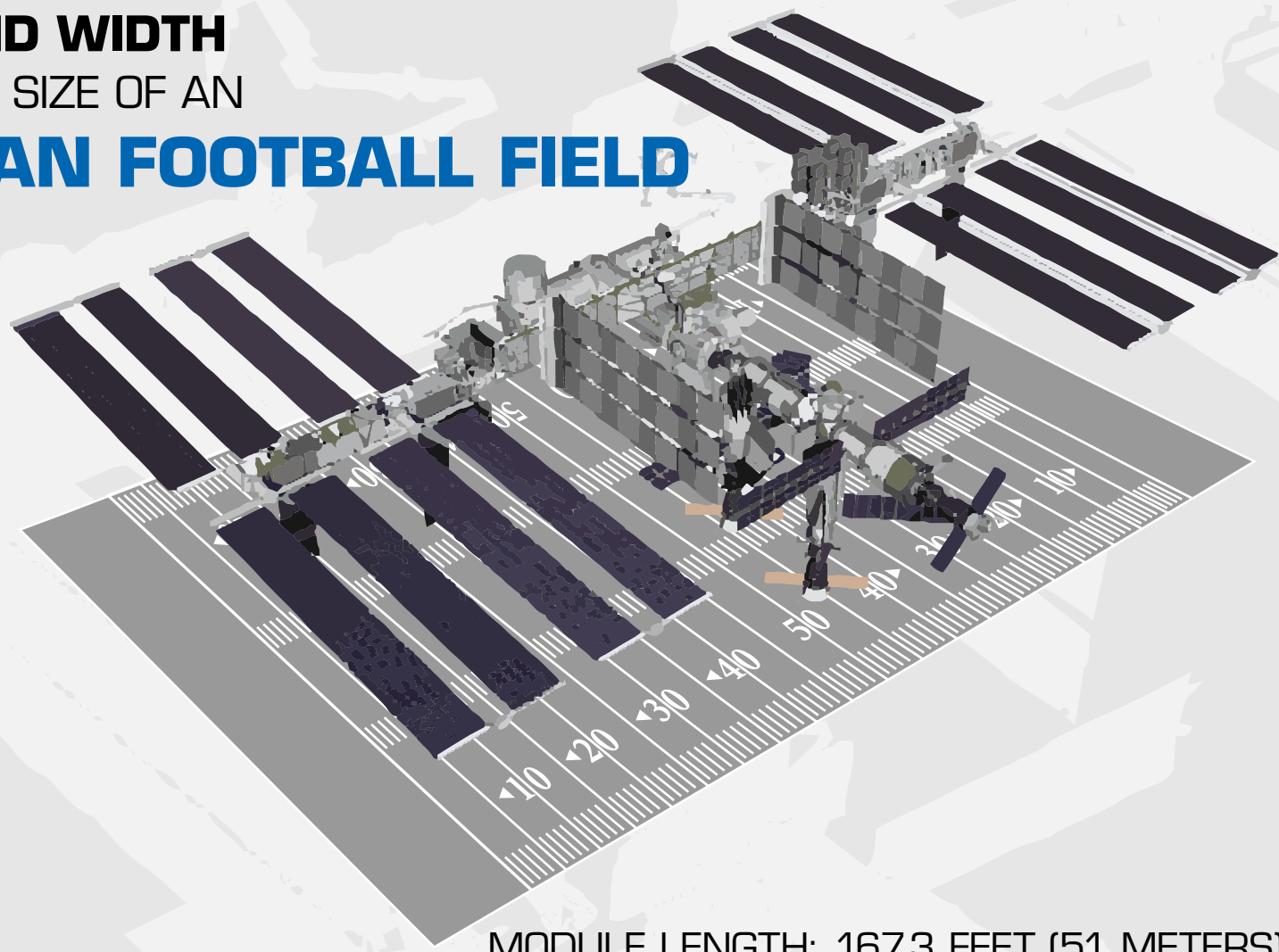


# 15 YEARS

THE INTERNATIONAL SPACE STATION'S  
LENGTH AND WIDTH  
IS ABOUT THE SIZE OF AN

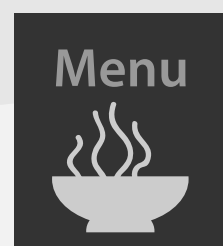
**AMERICAN FOOTBALL FIELD**



MODULE LENGTH: 167.3 FEET (51 METERS)  
TRUSS LENGTH: 357.5 FEET (109 METERS)  
SOLAR ARRAY LENGTH: 239.4 FEET (73 METERS)  
MASS: 924,739 POUNDS (419,455 KILOGRAMS)  
HABITABLE VOLUME: 13,696 CUBIC FEET (388 CUBIC METERS)  
PRESSURIZED VOLUME: 32,333 CUBIC FEET (916 CUBIC METERS)  
POWER GENERATION: 8 SOLAR ARRAYS = 84 KILOWATTS



## LIVING AND WORKING IN ORBIT ON THE INTERNATIONAL SPACE STATION

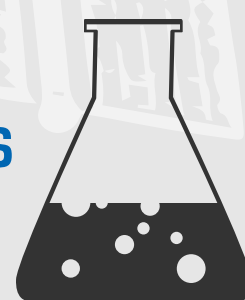


CREWS HAVE EATEN ABOUT  
**25,000 MEALS**  
SINCE THE FIRST CREW IN 2000

APPROXIMATELY  
**SEVEN TONS**  
OF SUPPLIES SUPPORT A CREW OF THREE FOR ABOUT  
**SIX MONTHS**



SPACEWALKING  
ASTRONAUTS AND COSMONAUTS  
HAVE SPENT MORE THAN **1,000 HOURS**  
WORKING OUTSIDE THE STATION



MORE THAN **1,500 SCIENTIFIC INVESTIGATIONS**  
PERFORMED ON THE INTERNATIONAL SPACE STATION

## INTERNATIONAL SPACE STATION BENEFITS FOR HUMANITY

ADVANCED  
**ROBOTIC SURGERY**



**CLEAN DRINKING WATER**  
FOR PEOPLE LIVING FAR FROM  
WATER TREATMENT FACILITIES

REMOTE  
**MEDICAL DIAGNOSTICS**



**EDUCATIONAL EVENTS**  
42 MILLION STUDENTS REACHED

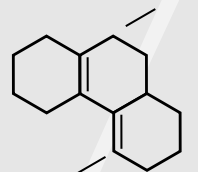
## MICROGRAVITY AND LOW-EARTH ORBIT RESEARCH LABORATORY

CONDUCTING EXPERIMENTS IN:



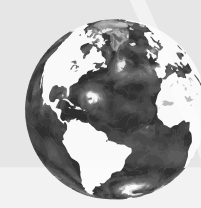
HUMAN RESEARCH

LIFE SCIENCES

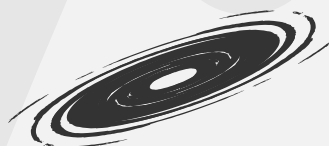


PHYSICAL SCIENCES

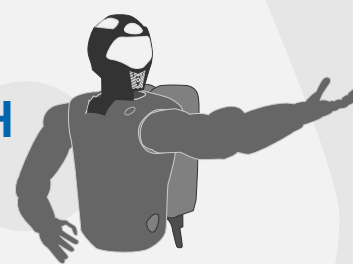
EARTH SCIENCES



ASTROPHYSICS



TECHNOLOGY RESEARCH



ONE THING YOU CAN SAY ABOUT THE INTERNATIONAL SPACE STATION

## IT'S BIG



LARGER THAN A  
**6-BEDROOM HOUSE**

INTERNAL VOLUME OF A  
**BOEING 747**



WEIGHS ALMOST A  
**MILLION POUNDS**  
(EQUIVALENT TO MORE THAN 320 AUTOMOBILES)

TRAVELS THE EQUIVALENT DISTANCE  
**TO THE MOON AND BACK**  
IN ABOUT A DAY



## INTERNATIONAL SPACE STATION TIMELINE

**NOV. 20, 1998**  
FIRST MODULE  
RUSSIAN ZARYA

**DEC. 6, 1998**  
FIRST U.S. MODULE  
UNITY

**OCT. 30, 2000**  
FIRST CREW, EXPEDITION 1

**NOV. 30, 2000**  
FIRST U.S. SOLAR ARRAYS

**FEB. 7, 2001**  
FIRST U.S. LAB  
DESTINY

**IN 1998 ...**  
43% OF AMERICAN ADULTS OWNED A COMPUTER  
41% USED THE INTERNET  
35% USED EMAIL  
FACEBOOK, TWITTER, MYSPACE AND YOUTUBE DIDN'T EXIST  
GOOGLE WAS BRAND NEW  
THE FIRST IPOD WAS STILL THREE YEARS AWAY

**IN 2013 ...**  
61% OF AMERICAN ADULTS OWN A LAPTOP  
58% OWN A DESKTOP  
85% USE THE INTERNET  
70% HAVE BROADBAND AT HOME  
MORE THAN 90% OWN A CELL PHONE  
42% OWN AN MP3 PLAYER  
88% USE EMAIL  
48% USE SOCIAL MEDIA

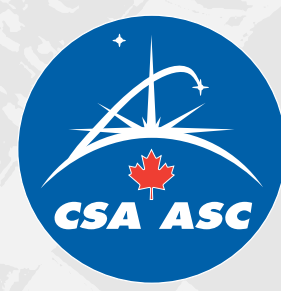
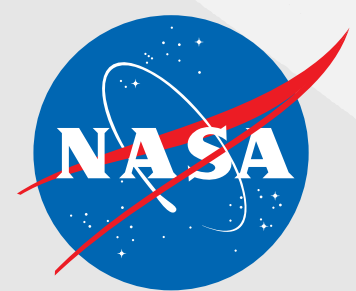
**FEB. 7, 2008**  
FIRST EUROPEAN MODULE  
COLUMBUS

**MARCH 11, 2008**  
FIRST COMPONENT OF JAPANESE  
KIBO MODULE

**MARCH 15, 2009**  
FINAL SOLAR ARRAYS

**FEB. 24, 2011**  
FINAL MODULE  
ITALIAN LEONARDO  
ASSEMBLY COMPLETE

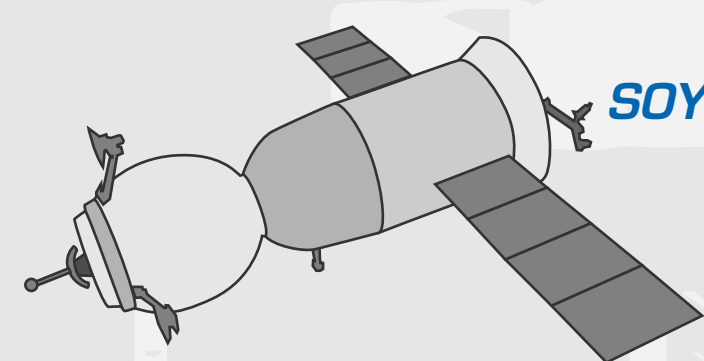
THE INTERNATIONAL SPACE STATION IS  
**A GLOBAL PROGRAM**  
INVOLVING THE UNITED STATES, RUSSIA,  
EUROPE, CANADA, AND JAPAN.



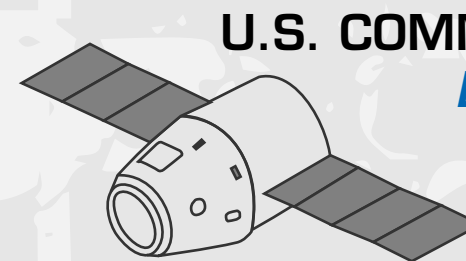
VISITED BY  
MORE THAN **200 PEOPLE**  
FROM  
**15 NATIONS**

## SPACEPORT

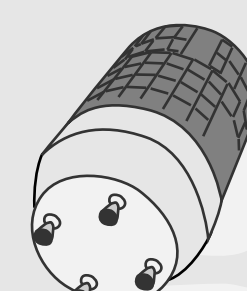
FOR A VARIETY OF INTERNATIONAL SPACECRAFT



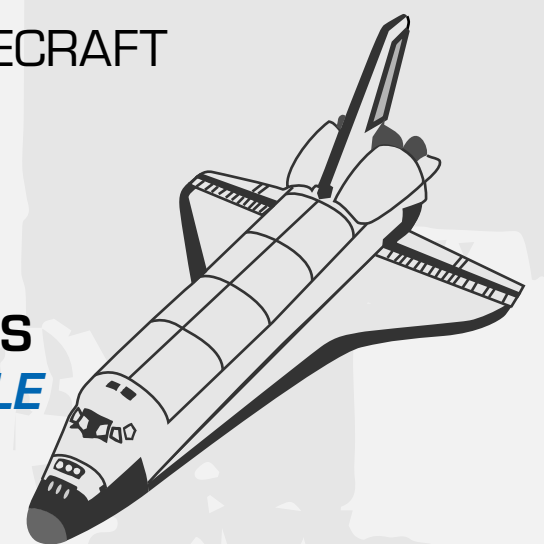
RUSSIA  
**SOYUZ & PROGRESS**



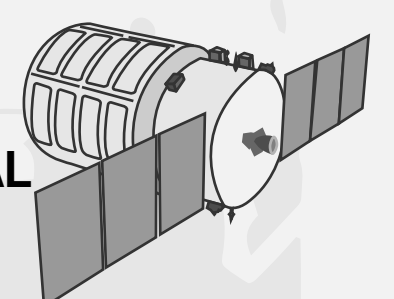
U.S. COMMERCIAL SPACE X  
**DRAGON**



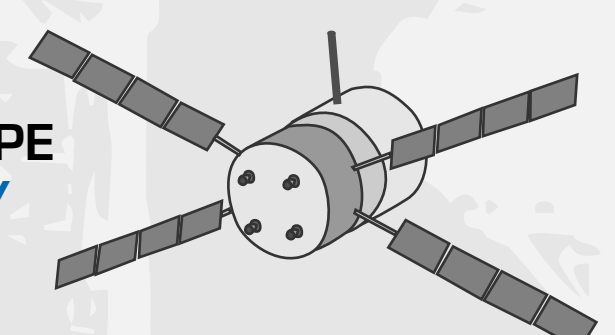
JAPAN  
**HTV**



UNITED STATES  
**SPACE SHUTTLE**



U.S. COMMERCIAL ORBITAL  
**CYGNUS**



EUROPE  
**ATV**

## LEARN MORE

**LATEST NEWS AND PHOTOS**

[www.nasa.gov/station](http://www.nasa.gov/station)

**SEE IT FOR YOURSELF**

[spotthestation.nasa.gov](http://spotthestation.nasa.gov)

**LIVE VIDEO**

[www.nasa.gov/iss-stream](http://www.nasa.gov/iss-stream)