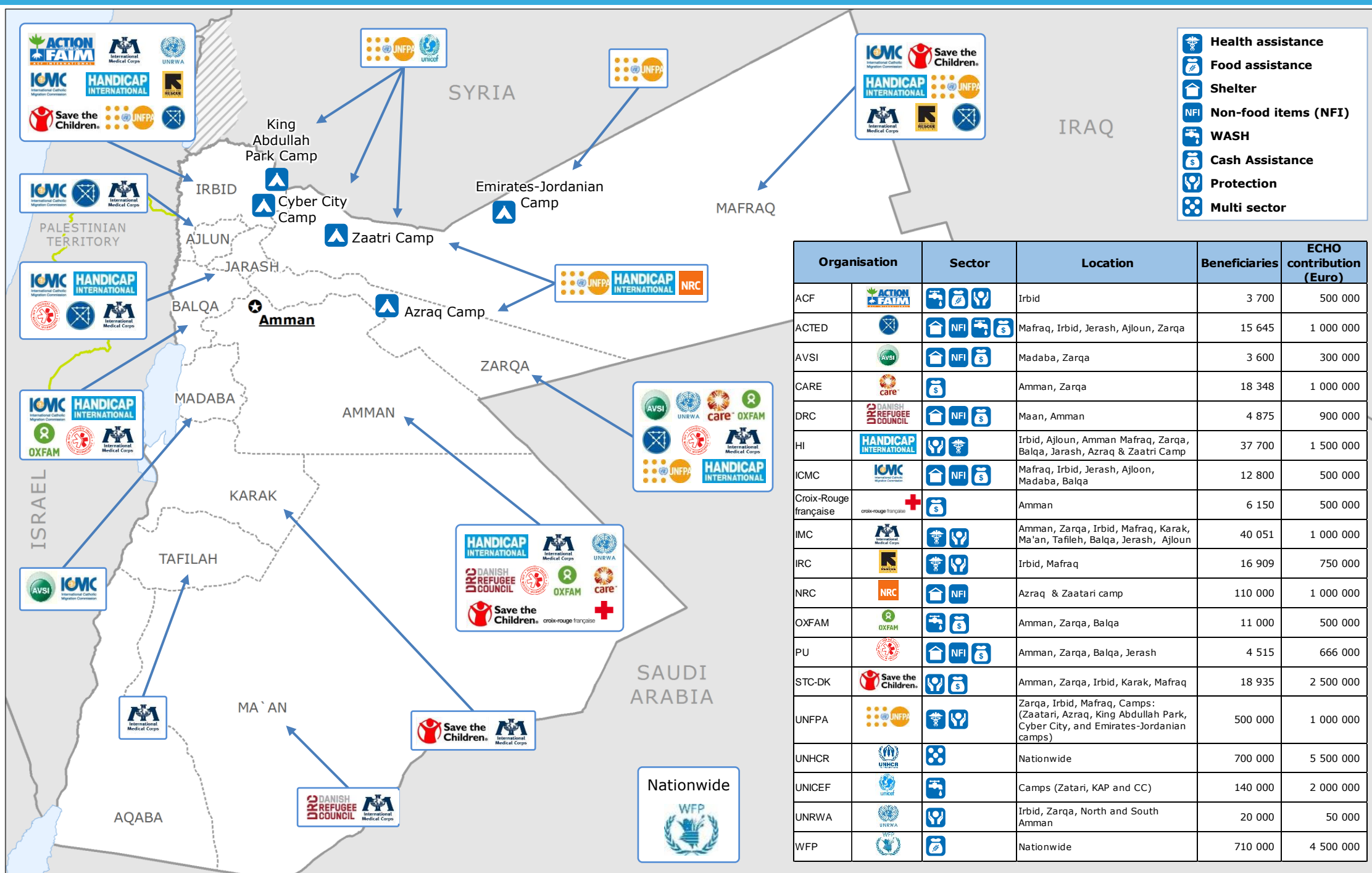


JORDAN: 2014 Humanitarian Assistance to Syrian-conflict affected population



Organisation	Sector	Location	Beneficiaries	ECHO contribution (Euro)
ACF		Irbid	3 700	500 000
ACTED		Mafrqa, Irbid, Jerash, Ajloun, Zarqa	15 645	1 000 000
AVSI		Madaba, Zarqa	3 600	300 000
CARE		Amman, Zarqa	18 348	1 000 000
DRC		Maan, Amman	4 875	900 000
HI		Irbid, Ajloun, Amman Mafrqa, Zarqa, Balqa, Jarash, Azraq & Zaatri Camp	37 700	1 500 000
ICMC		Mafrqa, Irbid, Jerash, Ajloun, Madaba, Balqa	12 800	500 000
Croix-Rouge française		Amman	6 150	500 000
IMC		Amman, Zarqa, Irbid, Mafrqa, Karak, Ma'an, Tafieh, Balqa, Jerash, Ajloun	40 051	1 000 000
IRC		Irbid, Mafrqa	16 909	750 000
NRC		Azraq & Zaatri camp	110 000	1 000 000
OXFAM		Amman, Zarqa, Balqa	11 000	500 000
PU		Amman, Zarqa, Balqa, Jerash	4 515	666 000
STC-DK		Amman, Zarqa, Irbid, Karak, Mafrqa	18 935	2 500 000
UNFPA		Zarqa, Irbid, Mafrqa, Camps: (Zaatri, Azraq, King Abdullah Park, Cyber City, and Emirates-Jordanian camps)	500 000	1 000 000
UNHCR		Nationwide	700 000	5 500 000
UNICEF		Camps (Zatari, KAP and CC)	140 000	2 000 000
UNRWA		Irbid, Zarqa, North and South Amman	20 000	50 000
WFP		Nationwide	710 000	4 500 000