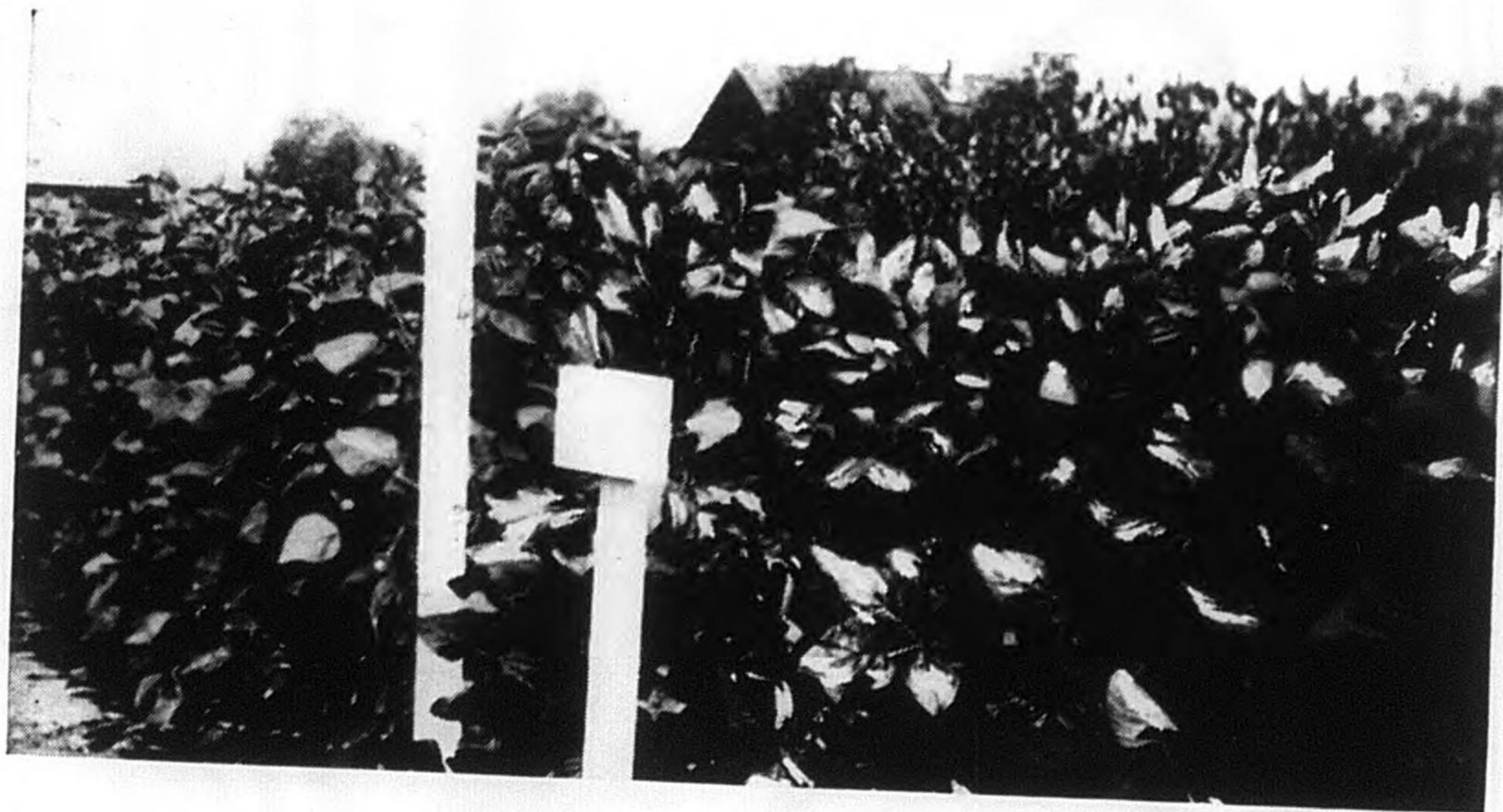


Sheep grazing at the Agricultural Experiment Station, Kungehuling, where Merinos are being crossed with Mongolian sheep

203-B



Soya beans at Experiment Station

203-B



Native bins for storing soya beans and other crops in Manchuria

203-B



Weaving raincoats of straw 203 - B



Drying wild silk cocoons in the sun

203-B



Harvesting at the Kungchuling Agricultural Experiment Station

203-13



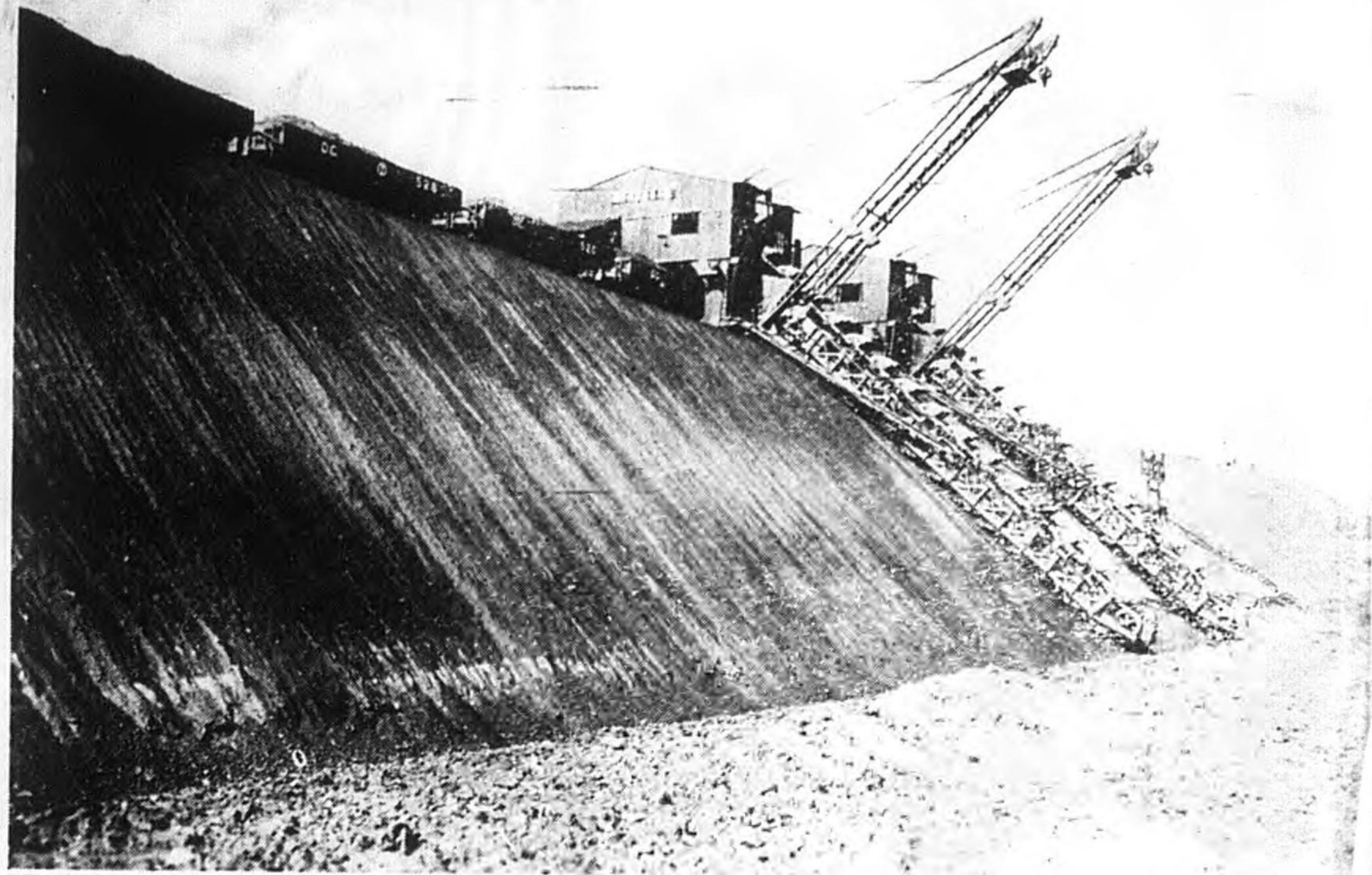
Separating kaoliang grain in Chinese farmyard 203 — B



Open cut coal mining at Fushun, near Mukden

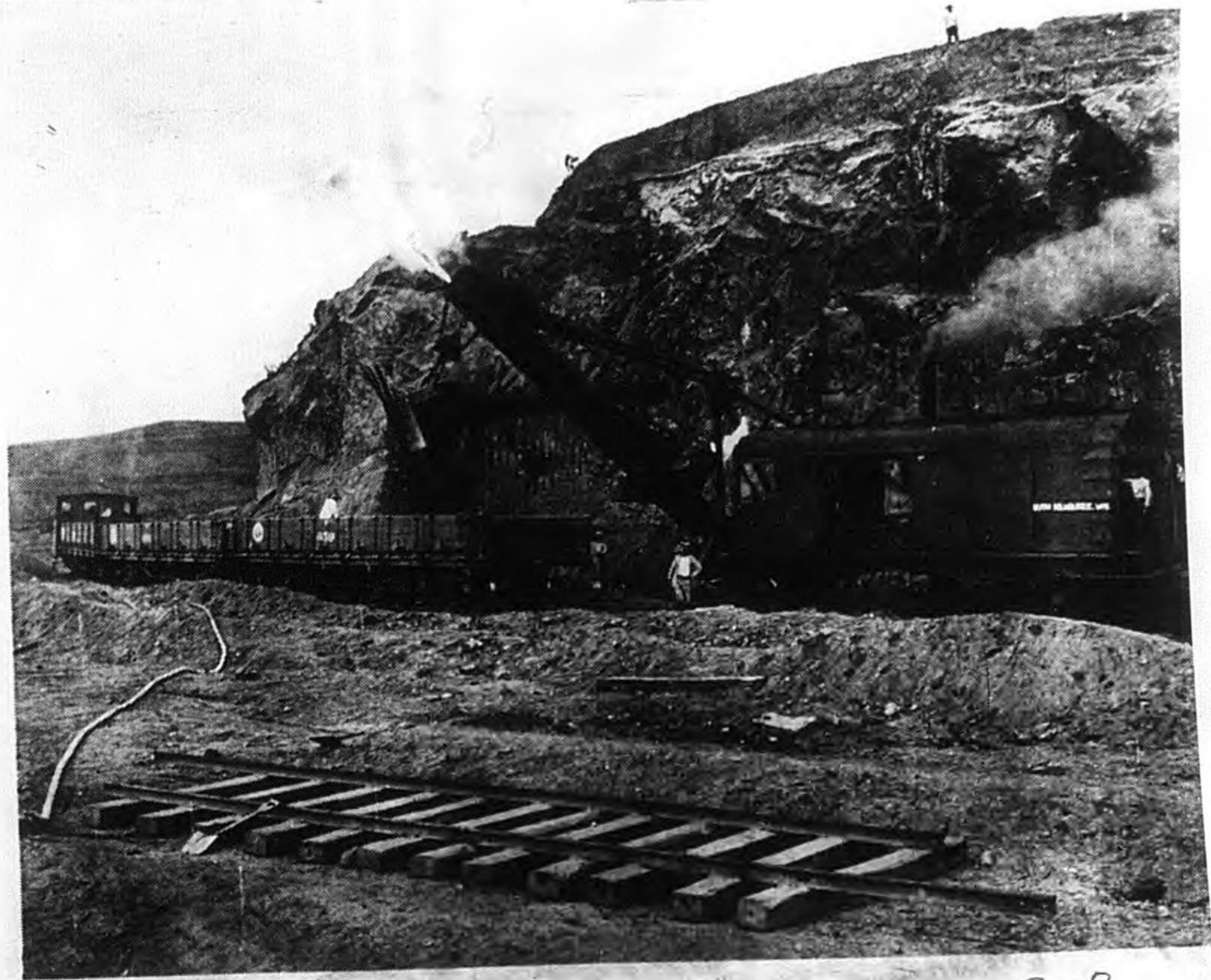
203B





Excavating machine at work at Fushun Colliery

203 - B



American steam shovel at Fushun 203-B



Loading soya beans and bean cakes for export at Dairen

203-B



Busy wharf scene, Dairen, chief port of Manchuria

207 - 18



Togo Pit of the Fushun Colliery, operated by the South Manchuria Railway Company

203-B



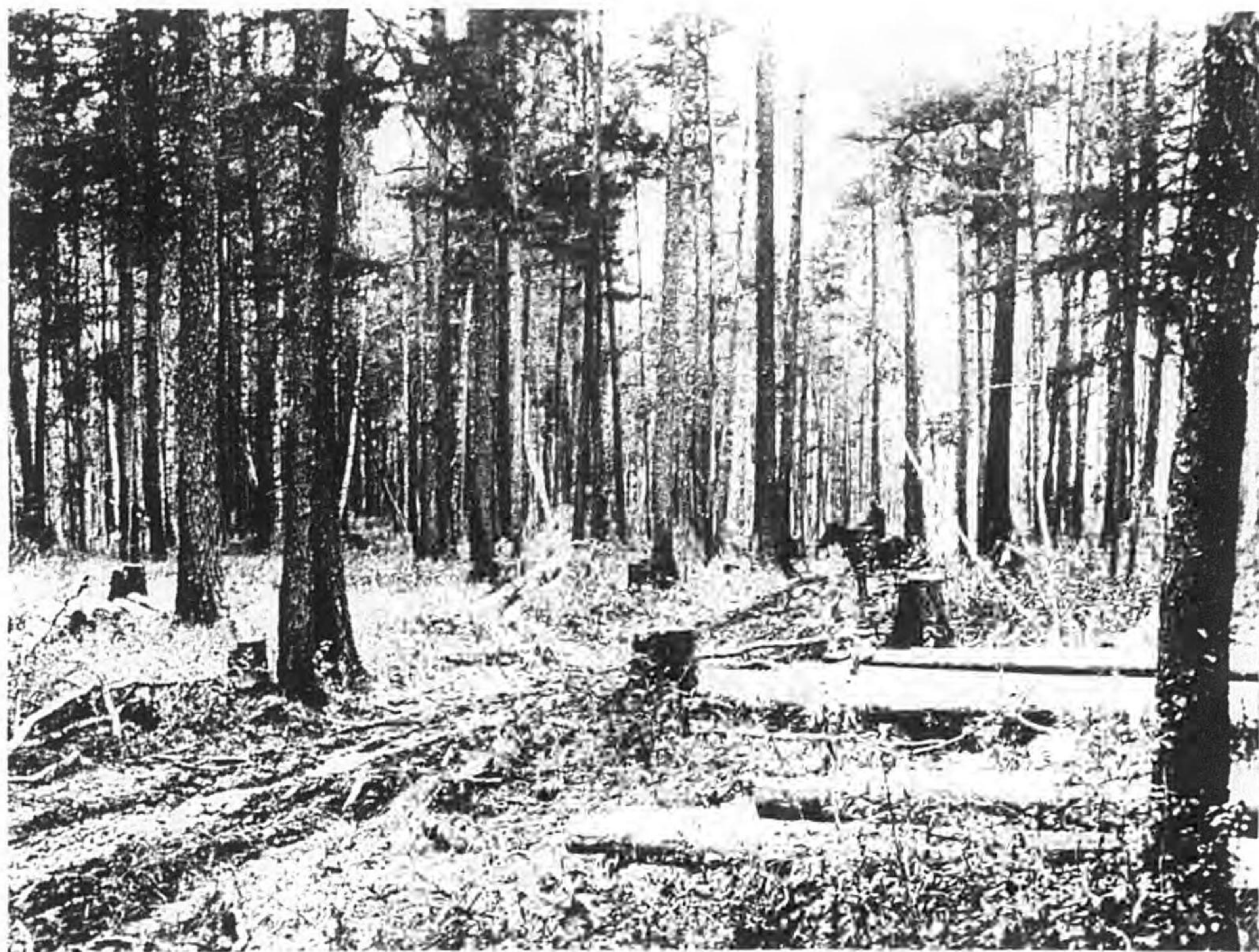
Making pottery near Penhsihu

203-B



Painting bowls in the Ceramic Factory, Dairen

202-B



Larch forest in North Manchuria

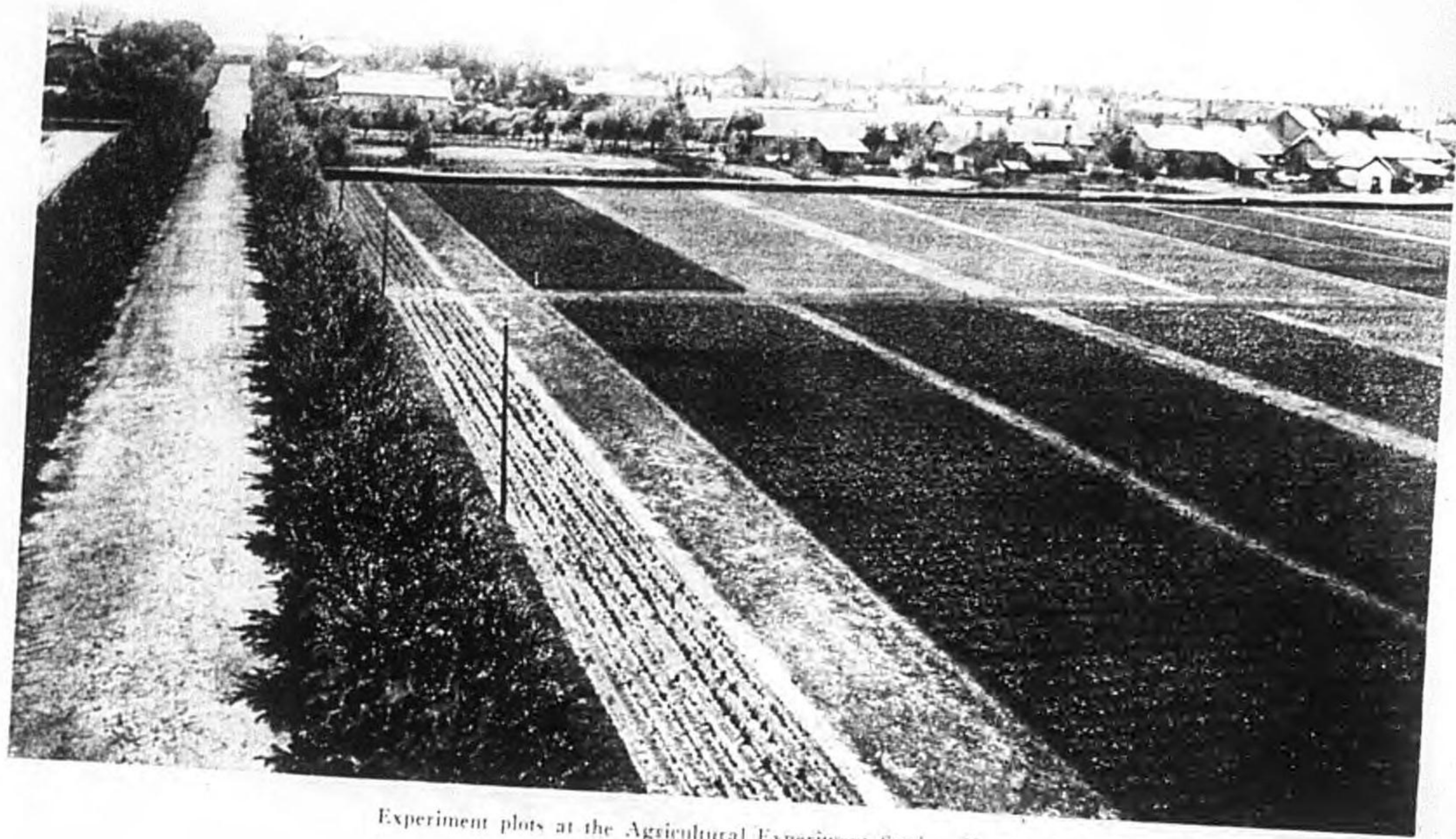
203-B





Takushan iron mine at Anshan

203-B



Experiment plots at the Agricultural Experiment Station, Kungchuling

203-B

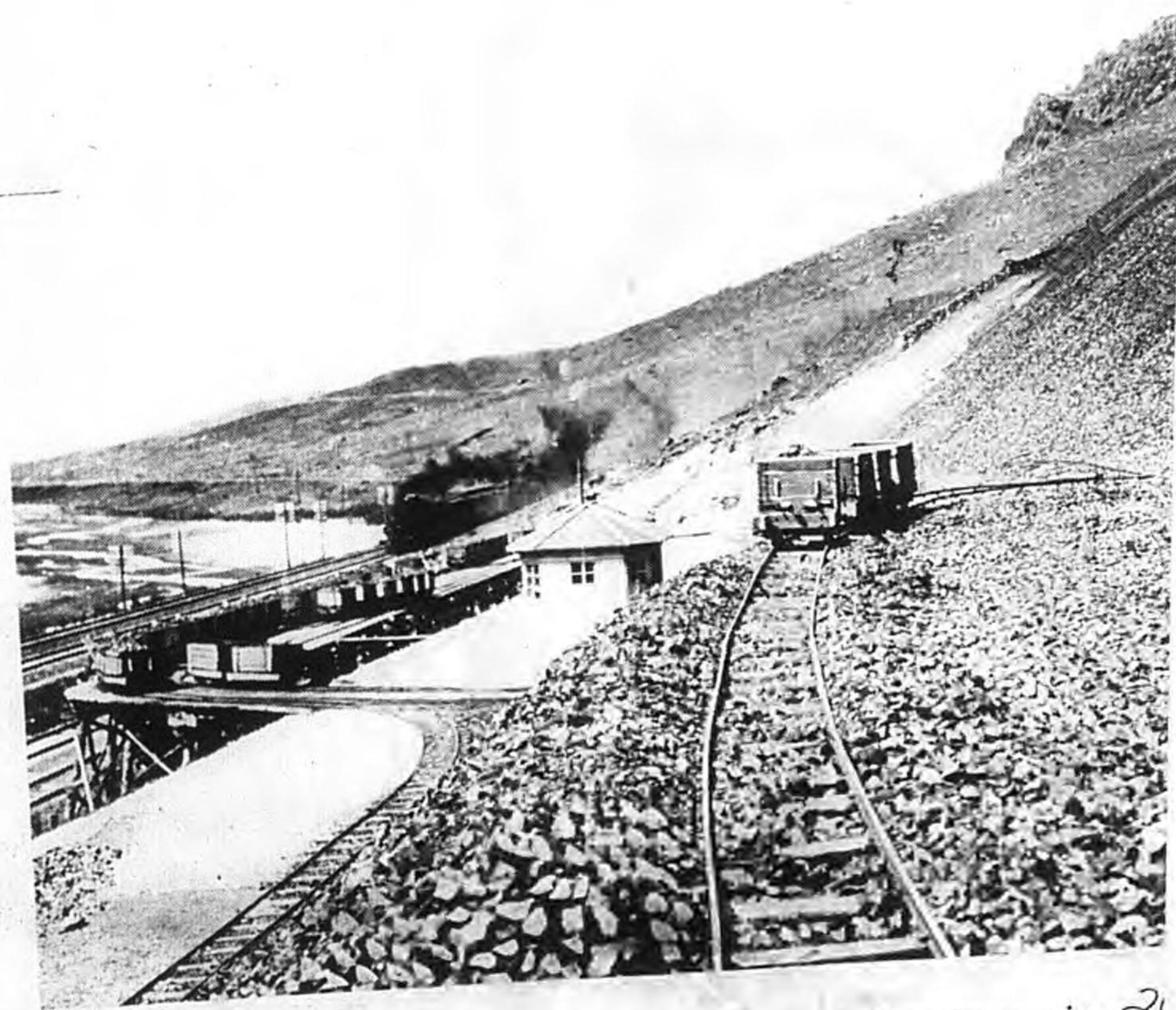


Train load of bean cakes at Dairen

203-B



Weaving wild silk (pongee) in Central Laboratory, Dairen 207-B



Main line of S. M. R. through iron mountains 20



Soya beans awaiting shipment

203-B



Herding sheep on Manchurian plain

203-B