

MG-61

145  
④

Report # 64

Itc (4)

>







**AIRCRAFT ACTION REPORT**

CONFIDENTIAL

Form ACA-1  
Sheet 1 of 5

**I. GENERAL**

(a) Unit Reporting MAC-61 (b) Based on or at \_\_\_\_\_ (c) Report No. 64  
 (d) Take off: Date \_\_\_\_\_ Time \_\_\_\_\_; Lat \_\_\_\_\_ Long \_\_\_\_\_  
 (e) Mission \_\_\_\_\_ (f) Time of Return \_\_\_\_\_

**II. OWN AIRCRAFT OFFICIALLY COVERED BY THIS REPORT**

TYPE	SQD	NUMBER	TAKING OFF	ENGAGING ENEMY A/C	ATTACKING TARGET	BOMBS AND TORPEDOES CARRIED (per plane)	FUSE, SETTING
(a)	(b)	(c)	(d)	(e)	(f)	(g)	(h)
PBJ-1	VMB443	9	None	9	1 x 2000 GP MK.66		Nose: AN-M-103inst Tail: AN-M-102-A2
PBJ-1	VMB611	8	None	8	6 x 500 inc.clus.		Self fusing
PBJ-1	VMB611	1	None	1	4 x 500 inc.clus. 2 x 500 GP		Self fusing

**III. OTHER U. S. OR ALLIED AIRCRAFT EMPLOYED IN THIS OPERATION.**

TYPE	SQD	No.	BASE	TYPE	SQD	No.	BASE

**IV. ENEMY AIRCRAFT OBSERVED OR ENGAGED (By Own Aircraft Listed in II Only)**

(a) TYPE	(b) No.	(c) No Engaging Own A/C	(d) Time Encountered	(e) LOCATION OF ENCOUNTER	(f) BOMBS CARRIED; GUNS	(g) CAMOUFLAGE; MARKINGS
None			(zone):			
			(zone):			

(h) Apparent Enemy Mission(s) \_\_\_\_\_  
 Did Any Part of Encounter(s) \_\_\_\_\_  
 (i) Occur in Clouds? \_\_\_\_\_ If so, Describe Clouds \_\_\_\_\_  
 Time of Day and (Yes or no) \_\_\_\_\_ (base in feet, type, tenths cover)  
 (j) Brilliance of Sun or Moon \_\_\_\_\_ (k) Visibility \_\_\_\_\_  
 (night, Bright moon; Day, overcast; etc.) \_\_\_\_\_ (miles)

**V. ENEMY AIRCRAFT DESTROYED OR DAMAGED IN AIR (By Own Aircraft Listed in II)**

(a) TYPE A/C	(b) Destroyed or Damaged By: Type A/C: SQD	(c) Pilot or gunner	(d) Damage Claimed
None			







# AIRCRAFT ACTION REPORT

~~CONFIDENTIAL~~

RESTRICTED  
(Reclassify when filled out)

(OMIT THIS SHEET IF NO ATTACK WAS MADE)

REPORT No. \_\_\_\_\_

**XI. ATTACK ON ENEMY SHIPS OR GROUND OBJECTIVES (By Own Aircraft Listed in II Only).**

(a) Target(s) and Location(s) Vunakanau #9, N.B. (Primary)  
Tobera #22, N.B. (alternate) (b) Time Over Target(s) 1040-1042 (Zone)

(c) Clouds Over Target 4/10 cumulus 2000' base, 6000' tops, 8/10 alt. st. over 12,000'  
(BASE IN FEET, TYPE AND TENTHS OF COVER)

(d) Visibility of Target Partially obscured by clouds (e) Visibility 10  
(CLEAR, HAZY, PARTIALLY OBSCURED BY CLOUDS, ETC.) (MILES)

(f) Bombing Tactics: Type level Bomb Sight Used Nk 15 mod 7  
(LEVEL, GLIDE OR DIVE) (TYPE)

Bombs Dropped per Run all Spacing varied Altitude of Bomb Release 10,800-12,000'  
(NUMBER) (FEET) (FEET)

(g) Number of Enemy Aircraft Hit on Ground: Destroyed None Probably Destroyed None Damaged None

(h) AIMING POINT	(i) DIMENSIONS OR TONNAGE	(j) NO. A/C ATTACKING (k) SQUADRON	(l) BOMBS AND AMMUNITION EXPENDED EACH AIMING POINT	(m) NO. HIT ON Aiming Point	(n) DAMAGE (None, Slight, Serious, Destroyed, or Sunk)
1 <b>Vunakanau #9</b>	1200 yds x 800 yds	8 VMB-413	6 x 2000 GP 4 x 500 inc. 2 x 1000 SAP		
2	at its greatest width				
3 <b>same</b>		3 VMB-433	3 x 2000 GP		see "o"
4 <b>same</b>		9 VMB-443	9 x 2000 GP		
5 <b>same</b>		9 VMB-611	52 x 500 inc. 2 x 500 GP		
6 <b>Tobera #23</b>		6 VMB-433	6 x 2000 GP		
7					
8					

(o) RESULTS: (For all hits claimed on ship targets and for land targets of special interest, draw diagram, top or side view or both, as appropriate, showing type and location of hits. For all targets give location and effect of hits, and identify by numbers above. Use additional sheets if necessary.)

Not counting the six planes that hit the secondary target, twenty-six planes from three squadrons plus three planes from a fourth squadron dropped 2 x 500 GP's, 2 x 1000 SAP's, 18 x 2000 GP's plus 56 x 500 incendiary clusters through clouds on the spot where Vunakanau #9 should have been. The road stretching diagonally through the approximate center of the target was set up as an aiming point for one squadron with the other three squadrons taking care of the adjacent sides. Observations through holes in the clouds placed some of the bombs within the target area, but in photographs taken during the strike the target is completely covered by clouds. Twelve bombs of undetermined weight landed 1000 yds west of the target, and are the only bomb hits picked up by the photographs. The clouds became thicker as time went on and the photo-reconnaissance plane was forced to leave without having taken any shots. The six planes that hit Tobera #23 as an alternate target, dropped 6 x 2000 GP's approximately 1000 yards west of the middle of the western edge of the target with no apparent damage visible. SAP bombs were carried because of the shortage of bombs.

An unusual photo of 500# incendiary clusters is attached.

(p) Were Photographs Taken? Yes Photographs of Damage, When Taken, Should Be Attached By Staple







# AIRCRAFT ACTION REPORT

~~CONFIDENTIAL~~

RESTRICTED  
(Reclassify when  
filed out)

REPORT No. \_\_\_\_\_

**XIII. MATERIAL DATA.** (Comment freely on performance or suitability, following check list at left.  
Use additional sheets if necessary).

**ARMAMENT**

Guns, Gunsights  
Turrets  
Ammunition  
Bombs, Torpedoes  
Bomb Sights  
Bomb Releases

**COMMUNICATIONS**

Radio, Radar  
Homing Devices  
Visual Signals  
Codes, Ciphers

**RECOGNITION**

IFF  
Signals  
Battle Lights  
Procedures

**PROTECTION**

Armor, Points and Angles  
of Fire Needing Further  
Protection  
Leak Proofing

**EMERGENCY EQUIPMENT**

Parachutes  
Life Belts, Life Rafts  
Safety Belts  
Emergency Kits  
Rations, First Aid

**NAVIGATIONAL EQUIPMENT**

Compasses  
Driftsights  
Octants  
Automatic Pilots  
Charts  
Field Lighting

**INSTRUMENTS**

Flight  
Power Plant

**OXYGEN SYSTEM**

**CAMOUFLAGE AND  
DECEPTION DEVICES**

**STRUCTURE**

Airframe  
Control Surfaces  
Control System  
Dive Flaps  
Landing Gear  
Heating System  
Flight Characteristics  
At Various Loadings

**POWER PLANT**

Engines  
Engine Accessories  
Propellers  
Lubricating System  
Starters  
Exhaust Dampers

**HYDRAULIC SYSTEM**

**ELECTRICAL SYSTEM**

Auxiliary Plant  
Lights

**FUEL SYSTEM**

**FLIGHT CLOTHING**

**MAINTENANCE**

**BASE FACILITIES**

Plane Servicing Equipment  
Personnel Facilities

Meanwhile the second group flew the easterly course for an additional minute then swung to a course of 30° in a right echelon of squadrons with VMB-611 javelined up as they carried 500# incendiary clusters. The bomb run was on a heading of 315° at 165 kts and 12,000 ft.

The flight reformed at the rally point and returned to base in the formation used on the way out. One plane of NZ#8 returned early with its bombs because of mechanical trouble.

**D. B. HATCH,**  
Capt., USMC,  
Group Intelligence Officer.

**P. K. SMITH,**  
Col., USMC,  
Group Commander.

REPORT PREPARED BY:

APPROVED BY:

SIGNATURE

RANK AND DUTY

SIGNATURE

RANK AND DUTY

DATE





(1) (MAGGI) (14) (0) (24) (1050) (25 FEB 45) (VUNAKANAU, N.S.)





TARGET

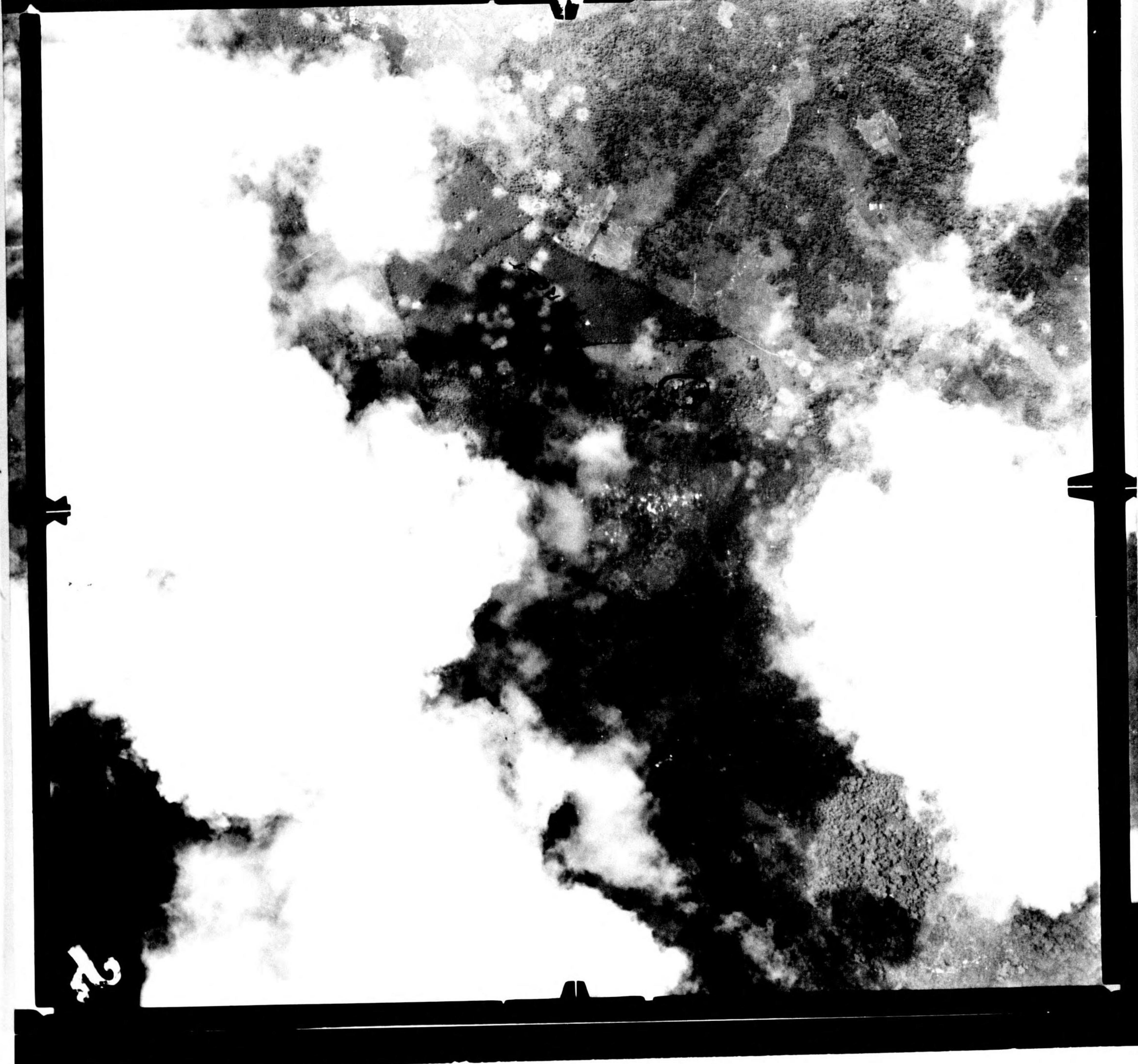
BOMB HITS

YFD 443-154 - V.N. 114100 - 13850 - E 1/4 - 2 - F-3 45



EASTMAN REGULAR SAFETY

EASTMAN REGULAR SAFETY



26





(MAGGI)(14)(0)(24")(1050)(25 FEB 45)(VUNARANAU, N.B)

14