

# Western Europe | Floods and EU response

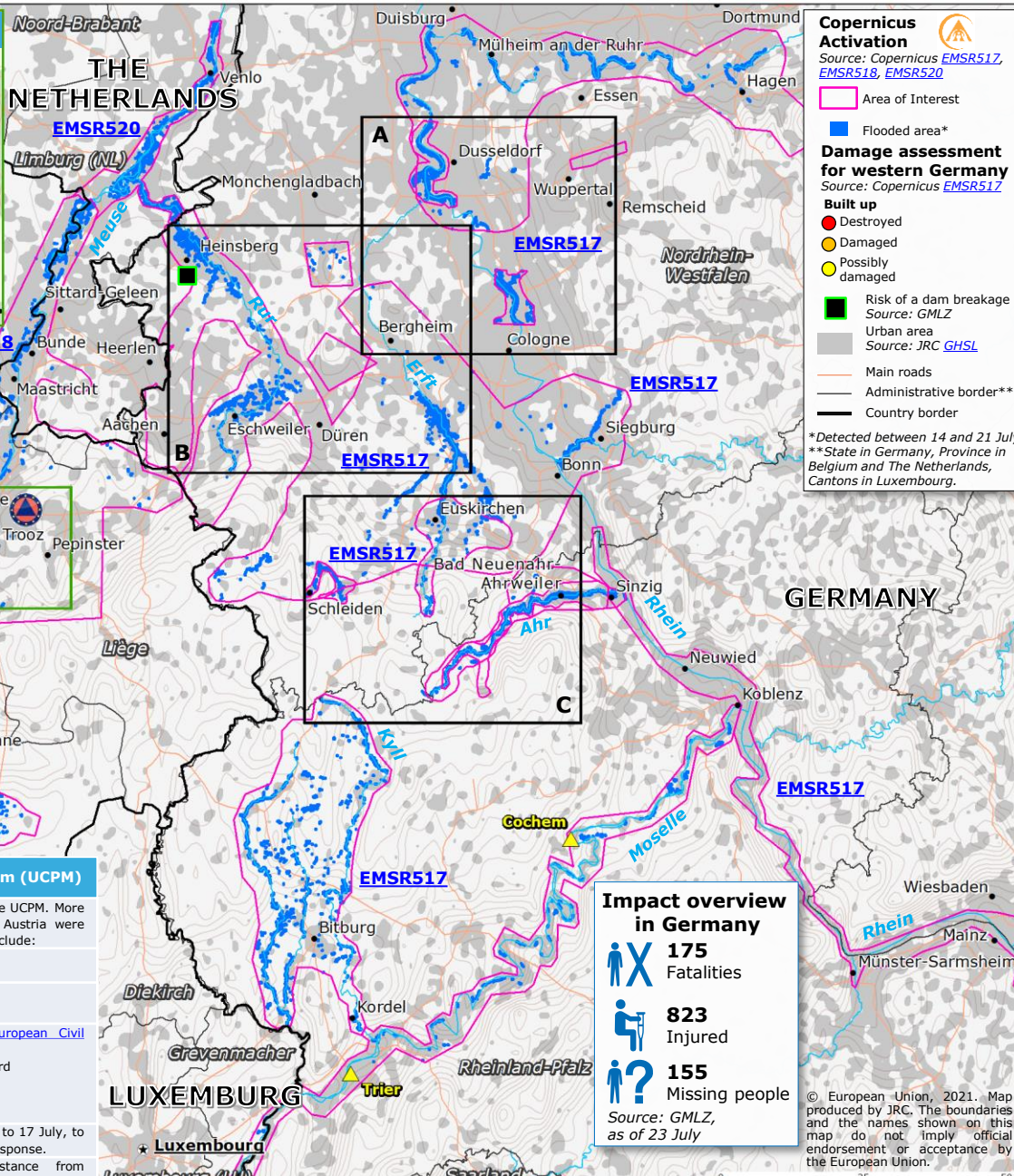
### UCPM deployments alongside Belgian response

Reception Center: Liège

ERCC LO: Grivegnée

ERCC LO: Bonnelles, Chaufontaine, Trooz, Nessonvaux, Wegnez, Tiff, Hony, Pepinster, Comblain-au-Pont

BE: Marche, Spa



### Impact overview in Belgium

36 Fatalities

6 Missing people

Source: NCCN, as of 23 July

### EU Civil Protection Mechanism (UCPM)

On 14 July Belgium requested assistance through the UCPM. More than 150 rescue workers from France, Italy and Austria were deployed to the affected area. The accepted offers include:

- 1 Flood rescue team using boats
- 1 Flood rescue team using boats
- 1 Search and Rescue helicopter
- 1 Flood rescue team using boats (European Civil Protection Pool)
- 1 helicopter EC 145 with 2 aquatic lifeguard
- 3 Zodiac boats
- 10 boat rescuers
- 7 divers

An ERCC LO was deployed Liège from 15 to 17 July, to support with the coordination of the EU response.

In addition, Belgium received bilateral assistance from Luxembourg and Netherlands.

### Impact overview in Germany

175 Fatalities

823 Injured

155 Missing people

Source: GMLZ, as of 23 July

### Copernicus Activation

Source: Copernicus EMSR517, EMSR518, EMSR520

Area of Interest

Flooded area\*

### Damage assessment for western Germany

Source: Copernicus EMSR517

Built up

- Destroyed
- Damaged
- Possibly damaged

Risk of a dam breakage  
Source: GMLZ

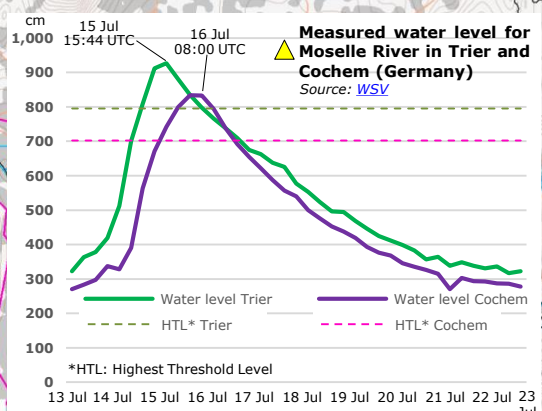
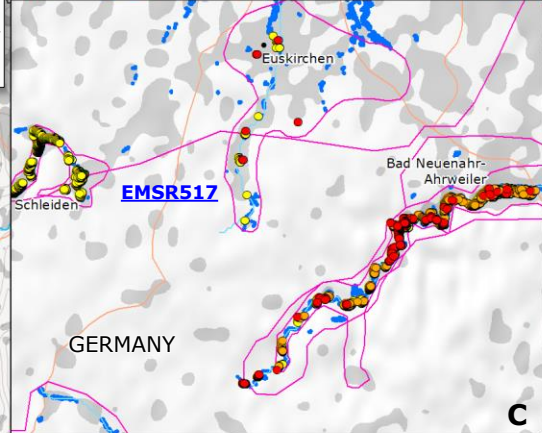
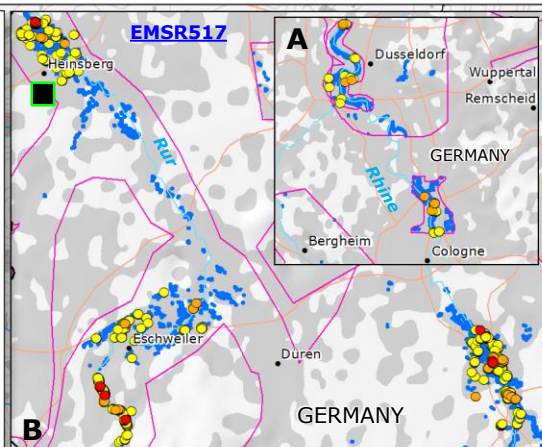
Urban area  
Source: JRC GHSL

Main roads

Administrative border\*\*

Country border

\*Detected between 14 and 21 July.  
\*\*State in Germany, Province in Belgium and The Netherlands, Cantons in Luxembourg.



© European Union, 2021. Map produced by JRC. The boundaries and the names shown on this map do not imply official endorsement or acceptance by the European Union.