

- and Diplomatic History. N.Y., Harper, 1928. (Revised in 1935.)
- Treat, P. J.—Diplomatic Relations between the United States and Japan, 1853-95. 2 vols. Palo Alto, Stanford University Press, 1932.
- Uyehara, G. E.—The Political Development of Japan, 1867-1909. London, Constable, 1910.
- Wada, T.—American Foreign Policy towards Japan during the Nineteenth Century. (The Toyo Bunko Publication, Series D, Vol. 1.) Tokyo, Toyo Bunko, 1928.
- Ware, E. E.—Business and Politics in the Far East. New Haven, Yale University Press, 1932.
- Wildes, H. E.—Social Currents in Japan. With special reference to the Press. Chicago, Chicago University Press, 1927.
- Willoughby, W. W.—The Sino-Japanese Controversy and the League of Nations. Baltimore, Johns Hopkins Press, 1935.
- Young, C. W.—The International Relations of Manchuria. Chicago, The University of Chicago Press, 1929.
- Young, C. W.—Japan's Special Position in Manchuria. Baltimore, Johns Hopkins Press, 1931.

Economics and Finance

- Agricultural Bureau, Department of Agriculture and Commerce—Outlines of Agriculture in Japan. Tokyo, 1910. pp. 132.
- Allen, G. C.—Modern Japan and its Problems. London, Allen and Unwin, 1928.
- Asahi, I.—The Secret of Japan's Trade Expansion. Tokyo, International Association of Japan, 1934.
- Bain, H. F.—Ores and Industry in the Far East. N.Y., Council on Foreign Relations, 1927. [Reprinted in 1933]
- Cunningham, W. B.—Report on the Cotton-Spinning and Weaving Industry in Japan, 1925-26. London, H. M. Stationery Office, 1927.
- Dautremere, J.—The Japanese Empire and its Economic Conditions. (Translated from the French.) London, Unwin, 1910.
- Harada, S.—Labor Conditions in Japan. (Studies in History, Economics and

- Public Law.) N.Y., Columbia University Press, 1928.
- Honjo, E.—The Social and Economic History of Japan. Kyoto, Institute for Research in Economic History of Japan, 1935.
- Hubbard, G. E. and Baring, D.—Eastern Industrialization and its Effect on the West. London, Humphrey Milford, 1935.
- Kobayashi, U.—The Basic Industries and Social History of Japan, 1914-18. New Haven, Yale University Press, 1930.
- Moulton, H. G. and Ko, J.—Japan. An Economic and Financial Appraisal. Washington, D. C., Brookings, 1931.
- Orchard, J. E. and D. J.—Japan's Economic Position. The Progress of Industrialization. N.Y., Macmillan, 1930.
- Penrose, B. F.—Population Theories and Their Application with Special Reference to Japan. Palo Alto, Stanford University Press, 1934.
- Sansom, G. B. and Macrae, H. A.—Report on Economic Conditions in Japan, to 30th June, 1928. H. M. Stationery Office, 1928. [Later reports in 1930, 1933, and 1935.]
- Scherer, J. A. B.—Japan's Advance. Tokyo, Hokusaido Press, 1934.
- Stein, G.—Made in Japan. London, Methuen, 1935.
- Takekoshi, Y.—The Economic Aspects of the History of the Civilization of Japan. 3 vols. London, George Allen and Unwin, 1930. pp. 1,557.
- Takizawa, Miss M.—The Penetration of Money Economy in Japan and its Effects upon Social and Political Institutions. N.Y., Columbia University Press, 1927.
- Uyehara, S.—The Industry and Trade of Japan. London, King, 1929.
- Yamasaki, K. and Ogawa, G.—The Effect of the World War upon the Commerce and Industry of Japan. New Haven, Yale University Press, 1929.

Miscellaneous

- The Foreign Affairs Association of Japan—The Japan Year Book, Tokyo. [Annual editions.]
- The Japan Manchoukuo Year Book Co.—The Japan and Manchoukuo Year Book. Tokyo. [Annual editions.]
- The Who's Who in Japan—Who's Who in Japan. Tokyo. [Annual editions.]

INDEX

INDEX

A

Abe Cabinet	161
Abyssinia Annexed	104
Account System	234
Administrative Litigation Court	127
Admission Tax	295
Agar-agar	452
Agricultural Associations	425
Agricultural and Industrial Banks	310
Agriculture	419-430
— Agriculture in 1938-1939	427-430
— Production in 1938	421
— Production in 1939	421
Alkawa, Y.	949
Ainu Race	37
Aircraft	512
Airplane Invented	102
Airways Companies	586
Akao Ronin	98
Alexander the Great, Birth of	93
Ambassadors, Foreign	208
Ambassadors, Japanese	204
America, Discovery of	97
American Independence	99
American Missions, Contribution of	683-685
Amusements	813-827
Amusements for Children	826
Amusement Tax	293
Ando Nobumasa	83
Anglo-Japanese Alliance	89
Animal Oils	537
Animals	27
Animism	54
Annual Events, Calendar of	827-832
Ansei Coup d'Etat	82
Ansei Modus Vivendi	81
Anti-Comintern Agreement	178-181
Apples	424
Aquiculture	450
Arable-lands	419
Area of Japan	15
Arisugawa Akihito, Imperial Prince	84, 86, 89
Arita Hachiro	121
Ariwarano-Narihira	750
Arkwright	99
Army	215-219
— Field Organization	217
— Peace Strength	217

— Promotion	218
— Service System	221
Army Education	218
Army Ministry	216
Army and Navy, Position of	212
Artificial Fiber Industry	488
Artificial Silk Yarns	489
Art Museums	776
Art, Primitive	57
Asaka, H.I.H. Prince	4
Asama Maru Incident	190
Ashikaga School	67, 648
Ashikaga Takauji	68
Ashikaga Yoshimitsu	68, 69
Aso, Mt.	33
Assassinations	144
Audit Board	127
Automobiles	513, 584
Aviation	585
Azuchi Castle	70
Azuki-beans	424

B

Bacteriological Laboratories	711
Ballagh, J. H.	681
Baltic Fleet	90
Bamboo	459
Bank Bonds	343
Banking	301-321
Banking and the Money Market in 1939	336-339
Bank Laws	301-303
Bank Notes	322
Bank Notes Issued	324
Bank of Chosen	312
Bank of Japan	305
— Balance Sheet for 1939	307
— Establishment of	102
Bank of Taiwan	312
Banks in the Empire	303
— Deposits and Loans in 1939	304
— Foreign Banks	320
— Ordinary Banks	301
— Savings Banks	302
— Special Banks	303, 305-313
— The Big Seven	319
Barcelona, Fall of	105
"Barley and Soldiers"	753
Baseball	800
Basho, the Poet	75, 752
Basketball	811

Bean Cake	531
Beer	547
Bible, English Version	98
Bicycles	514
Births	45
Black Death in Europe	96
Bleaching	499
Bleaching Powder	535
Blind and Dumb Schools	669
Block-printing Introduced	62
Bollers	507
Bonds, Absorption of	298
Bonkei	824
Bourses	344
Bourse Tax	294
Boxer Uprising	89
Boxing	808
Bread	551
Brewing	547
British Legation Attacked	100
Broadcast, Overseas	573
Broadcasting Corporation of Japan	573
Brown, A. R.	591
Brown, Dr.	681
Buddha, Birth of	93
Buddhism	678
— In the Nara Period	61
Buddhist Mobs	71
Buddhist Sects	678-680
Buddhist Temples, Important	680
Budget, 1940-41	243-270
— Expenditure	241, 268
— New Requirements	269
— Revenue	245, 267
Budget, 1940-41, Explanation of	267
Bugyo	75
Buildings, New	353
Building Tax	293
Buke Hatto	73
Bunyano-Yasuhide	750
Bushido, Birth of	67
Business Conditions	341
Business Schools	660
Business Tax	287
Butter	551

C

Cabinet	110
Cabinet Advisory Council	124
Cabinet Bureaux	124
Cabinet, First Forma-	

- Electricity in 1938 and 1939 520
 Elementary Schools 652
 Emigration 51
 Emigration Prohibited by America 103
 Emperor, H.I.M. 1, 92
 Emperors, List of 1073
 Employment Exchanges 697
 Empress, H.I.M. 1
 Empress Dowager, H.I.M. 1
 Engines 508
 Enryakuji Temple 63
 Enterprises, Kinds of 341
 Envoys, Foreign 208, 209
 Envoys, Japanese 204-208
 Eto Shimpei 86
 European War, Second 106, 161
 Excess Profit Tax 288
 Exchange Rates 334
 Exclusion Policy 80
 Expectation of Life 46
 Export Promotion 367
 Exports 375-380
 — by Countries 383
 — Ratio of 371
- F**
- Factories 347
 — Number of 347
 — Operatives 348
 — Production of 348
 Farm Households 419
 Farmer Mobs 72
 Farmer Mob in Yedo Period 77
 Farmers in Yedo Period 78
 Farmers' Side-lines 429
 Farmers' Unions 616
 Fauna 27
 Fauna, Marine 28
 February 26 Incident 148
 Fencing, Japanese 808
 Fencing, Western 812
 Feng Kuo-chang 995
 Feng Yu-hsiang 995
 Fenoloso, E. F. 767
 Fenton, J. W. 781
 Fertilizers 530
 — Consumption 532
 — Prices 534
 — Production 532
 — State Control 533
 Feudalism, Beginning of 69
 Fevers 710
 Fleets, Surrender of 84
- Field Marshals 212
 Finance (See Public Finance)
 Financial Measures in 1938-1939 296
 Fine Arts 757-776
 Fine Arts During 1939-40 770
 Fire-arms Introduced 97
 Fish 444, 446
 Fish and Animal Fertilizers 531
 Fish Fertilizers 452
 Fish Oils 453
 Fisheries 442-455
 — Aquiculture 450
 — Coastal 444
 — Exports of Products 442
 — Fishing Vessels 443
 — Floating Canneries 449
 — In Soviet Waters 448
 — Manufactured Fishery Products 451
 — Pelagic 445
 — Persons Engaged 443
 — Production 442
 — Trawling 448
 — Whaling 447
 Fishermen 443
 Fishery Dispute 173, 191
 Fishery Organizations 454
 Fishing Vessels 443
 Fishing Vessel Insurance 416
 Five Big Cities 842-857
 Flavors 548
 Fleet Admirals 212
 Fleets 222
 Floating Canneries 449
 Flora 24
 Flora, Marine 25
 Flower Arrangement 823
 Flowers, Characteristic 26
 Football 809
 Football, American 812
 Foreign Banks 320
 Foreign Exchange 329
 Foreign Exchange Control Law 329
 Foreign Relations 168-209
 — During 1938-1940 188-200
 — With Australia 171
 — With Canada 171
 — With China 184-188
 — With France 181
 — With Germany 178
 — With Great Britain 170
 — With Holland 171
 — With Italy 179
 — With the League of Nations 184
- With Manchoukuo 182-184
 — With Siam 182
 — With South America 182
 — With Thailand 195
 — With the United States 175
 — With the U.S.S.R. 172, 191
 — With Transvaal 182
 — With Turkey 182
 Foreign Relations, Chronology of 200-204
 Foreign Residents 50
 Foreign Students 675
 Foreign Teachers 675
 Foreign Trade 365-397
 — By Groups of Commodities 372
 — The Empire 369
 — Japan Proper 370
 — In 1938 and 1939 373
 — In 1939 365
 — In 1940 393
 Foreign Trade with
 — Australia 392
 — British India 389
 — Canada 392
 — China 382, 387
 — Dutch Indies 390
 — Egypt 392
 — France 390
 — Germany 391
 — Great Britain 381, 390
 — Hong Kong 388
 — Kwangtung L.T. 386
 — Manchoukuo 385
 — Philippine Islands 389
 — Straits Settlements 388
 — The U.S.A. 381, 391
 — Union of South Africa 392
 Foreign Visitors 587
 Forest Administration 462
 Forest Insurance 461
 Forest Zones 24, 456
 Forestry 456-464
 — Afforestation 458
 — Forest Damage 461
 — Lumber Prices 463
 — Production 459
 — Productive Forests 460
 — Supply and Demand of Lumber 464
 — Trade in Lumber 464
 Forestry Associations 461
 Forestry Education 462
 Forestry Experimentation 463
 Forestry Insurance 415
 Forests, Area of 457
 Forests, Growing

- Timber 457
 Formosa (See Taiwan) 882-902
 Fortresses 218
 Four-Power Treaty 175
 Fowls 425
 Franco, General 104
 Frazer, Hector 591
 Fuji, Mt. 20
 Fuji and Hakone 31
 Fujihara Ginjiro 122
 Fujiwara Despotism 63
 Fujiwara Kamatari 59
 Fujiwara Yoshie 789
 Fulton's Steamboat 99
 Fushimi, H.I.H. Prince 3
- G**
- Gandhi 103
 Ganjinwajo 760
 Gas Companies 522
 Gas Consumption 523
 Gas Industry 522
 Gas Industry in 1938 and 1939 523
 Gasoline Tax 295
 Gemmyo, The Empress 94
 Genji 63
 Genji-monogatari 64, 750
 Genro 109
 Genro-in 86
 Genroku Period 75
 Gentlemen's Agreement 102
 Geography 15-33
 Geological Formation 16
 German Empire Proclaimed 101
 Girls' High Schools 659
 Glass 556
 Glassware 557
 Go 820
 Goble, J. 681
 Go-kura 427
 Gold 468
 Gold Concentration 339
 Golf 810
 Gonin-gumi 71
 Goto Shimpei 173
 Government 108-132
 — Cabinet 110
 — Form of 109
 — Officials 127
 — People 109
 — Regency 110
 — Tenno (Emperor) 109
 Governor, Local 131
 Grand Keeper of Imperial Seals 8
 Grand Shrine of Ise 676
- Grapes 424
 Greene, D. C. 681
 Gyokudo Kawai 767
 Gyokusho Kawabata 767
- H**
- Hainan Campaign 1056
 Hainan Island 181
 Hakone 31
 Hamaguchi Cabinet 141
 Hanagaruta 821
 Haniwa 56
 Hankow, Fall of 1056
 Hara Cabinet 139
 Hara Takashi 139
 Harris, Townsend 81
 Hasekura 98
 Hasewell, W. H. 591
 Hashida Kunihiko 123
 Hata Shunroku 122
 Hatozue 11
 Hayashi Cabinet 152
 Hazan Itaya 768
 Health Insurance 414
 Heike-monogatari 751
 Heishi 63
 Hemp Industry 495
 Hemp Tissues 497
 Higashi Fushimi, H.I.H. Princess 3
 Higashi-Kuni, H.I.H. Prince 4
 High Military Council 212
 Higher Schools 662
 Hino Ashihei 753
 Hiranuma Cabinet 158
 Hirata Atsutane 82
 Hirota Cabinet 148
 Hirota-Hull Messages 176
 Hirota-Karakhan Agreement 173
 History of Japan 53-107
 — Ancient Japan 55
 — Asuka Period 58
 — Chronicle of Important Events 93-107
 — Heian Period 63
 — Kamakura Period 60
 — Meiji Era 84
 — Muromachi Period 68
 — Nara Period 61
 — Prehistoric Culture 53
 — Primitive Costumes 54
 — Taisho Era 91
 — Yedo Period 73
 Hitler, Adolf 104
 — Appearance of 103
 Hockey 812
 Hogai Kano 767
- Hokkaido Sakai 765
 Hokkaido Colonization Bank 311
 Hokkaido, Cultivation of 85
 Hokkaido Takushoku Ginko 311
 Hokusai Katsushika 765
 Hollanders 80
 Homen In 691
 Honda Yolchi 683
 Hoodo Temple 761
 Horsemanship 810
 Horse Racing 818
 Horses 424
 Horyuji Temple 758
 Hoshi Toru 136
 Hoshino Naoki 124
 Hoslery 499
 Hospitals 713
 Household, Size of 43
 House of Peers 128, 133
 House of Representatives 128
 House Tax 294
 Hsueh Battle 1054
 Hsu Shih-chang 995, 996
 Hughes, Secretary 168
 Hu Han-min 997, 998
 Hunting 811
 Hyakunin Isshu 821
 Hypothec Bank of Japan 309
- I**
- Ice 706
 Ii Naosuke 82
 Immigration Question 175
 Imperial Academy 727
 Imperial Court 1-14
 Imperial Diet 127-130
 — First Session 133
 — Second Session 133
 — Sixth Session 134
 — 12th Session 135
 — 64th Session 143
 — 65th Session 144
 — 67th Session 146
 — 69th Session 148
 — 70th Session 150
 — 71st Session 154
 — 72nd Session 155
 — 73rd Session 155
 — 74th Session 159
 — 75th Session 164
 — Function of 129
 — Imperial Edict 87
 — Petition for Opening 87
 Imperial Household Ministry 8

- Saghalien, Partition of 91
 Salcho 64
 Salgo Rebellion 86
 Salgo Takamori 83, 86
 Salkaku, the Novelist 75, 753
 Salonji Cabinet (Second) 138
 Salonji Kimmochi 137
 Salto Cabinet 143
 Sakai in the Muro-machi Period 69
 Saké 547
 Sakura 26
 Sakurauchi Yukio 121
 Salaried and Salesmen's Health Insurance 417
 Salt 453
 Samurai Class, Rise of 63
 Samurai Households 78
 Sanitation 706
 Sanjo Sanetomi 83
 Sankin-kotal 73, 76
 Scholtz, Paul 784
 School Hygiene 672
 Schools, Beginning of 64
 Science 721-734
 — Chronology of 733
 — History of 721-723
 — Recent Publications 727
 — Recent Work 723
 — Research Institutions 727
 Seamen's Insurance 417
 Seas and Coast-line 19
 Sea Transportation 589-599
 — Business Conditions 592
 — Freight Rates 597
 — In 1939 and 1940 595
 — Recent Regulations 596
 Sea Transportation in Yedo Period 78
 Seclusion of the Nation 74, 80
 Seiho Takeuchi 767
 Selyukai, Formation of 136
 Sekigahara, Battle of 98
 Sen-no Rikyu 70
 Sepulchral Mounds 56
 Sericulture 431-433
 Sesshu, the Painter 764
 Setoguchi, T. 785
 Seto Naikal 33
 Sewerage 707
 Shanghai Affair 103, 184
 Sheep 425
 Sheet Glass 556
 Shellfish 444
 Shibatatto 758
 Shimabara Rebellion 80
 Shimada Toshio 122
 Shimonoseki Bom-
 barded 100
 Shimonoseki Peace Treaty 89
 Shinagawa, Y. 134
 Shinran 71
 Shintoism 676
 — Primitive 57
 — Sectarian 678
 — Shrines 676
 Shipbuilding 515
 Shipping Companies 592
 Shoen 62
 Shogi 820
 Shogunate, Beginning of 66
 Shogunate, Downfall of 82
 Shohei School 648
 Shoso-in Museum 94, 759
 Shotoku-Taishi, Prince 58, 94, 648
 Shrines, Important 677
 Sian Affair 186
 Silk 433-441
 — American Consumption 437, 438
 — Exports 436
 — Markets 437
 — Prices 438
 — Production 435
 Silk Conditioning 439-441
 Silk Textile Industry 486
 Silk Textiles 487
 Silk Textiles, Exports of 488
 Silla 62
 Silver 470
 Simla Conference 170
 Sino-Japanese Hostilities 1051-1059
 Sino-Japanese Hostilities, Chronicle of 1059-1062
 Sino-Japanese War 89, 134
 Sirota, Leo 788
 Skating 811
 Skiing 810
 Slaughter-houses 707
 Slaughtering 707
 Soap 535
 Social Education 672
 Social Mass Party 143
 Social Work 691-705
 — Block Committee 691
 — Child Protection 692
 — Economic Protection 695
 — Health Protection 702
 — Poor Relief 700
 — Statistics 703
 — Unemployment Protection 697
 — Imperial Interest in 11
 Social Work Law 691
 Soda Ash 534
 Soft Drinks 549
 Solar Calendar Adopted 85
 Songs, Popular 824
 South Manchuria Railway Co. 137, 970-972
 — Establishment of 91
 South Sea Islands 92, 103, 912-926
 — Administration 917
 — Climate 913
 — Communications 922
 — Education 924
 — Finance 918
 — History 914
 — Industries 920
 — Islands 912
 — Medicine 926
 — Occupation of 92
 — Population 915
 — Religion 925
 — Trade 922
 — Tribes 916
 Southwestern Civil War 86
 Soya-beans 424
 Soy, Miso, etc. 540
 Spanish-American War 102
 Spanish Armada 97
 Special Accounts 234, 264
 Sports 794-812
 — Record of 797
 — Track and Field 802
 — Western 796
 Spratley Islands 181
 Stamp Duties 205
 Staple Fiber 491
 State Funerals 11
 State Property 275
 State Railways 576
 — Beginning of 576
 — Finance 578
 — Income and Expenses 580
 — Open Lines 578
 — Organization 577
 — Traffic Earnings 578
 Steel 473, 475
 Stimson, H. L. 176
 Stock-Exchanges (Bourses) 344
 Stocks in Warehouses 600
 Stoessel, General 99
 Succession Tax 290
 Suez Canal Opened 101
 Sugar 545
 Sugar Cane 424
 Sugar Excise 295
 Sugawara Michizane 95, 750
 Sulphate of Ammonia 530
 Sumo 807
 Sun Yat-sen 994, 995, 996, 997

- Superphosphate of Line 530
 Supply and Demand 361
 Supreme Court 622
 Swimming 806
 Swords, Prohibition of Wearing 85
 T
 Table Water Tax 294
 Taiho Law 61, 94
 Taitan Yokoyama 767
 Taika Reformation 59
 Taira Kiyomori 63
 Tairo 74
 Tai-shin-in 622
 Taisho, The Emperor 91, 92
 Taiwan 882-902
 — Aborigines 884
 — Administration 883
 — Agriculture 887
 — Aquatic Products 892
 — Area and Topography 882
 — Budget for 1940-41 898
 — Climate 883
 — Communications 901
 — Companies 894
 — Education 886
 — Finance and Economy 897
 — Forestry 891
 — Inhabitants 882
 — Justice and Police 885
 — Medicine 887
 — Mineral Products 892
 — Monopolies 899
 — Overseas Trade 895
 — Railways 900
 — Religion 886
 — Rice Crops 887
 — Social Work 886
 — Sugar Companies 890
 — Sugar Industry 889
 — Tea 888
 Taiwan Ginko 312
 Takamatsu, H.I.H. Prince 2
 Takeda, H.I.H. Prince 5
 Takeji Fujishima 767
 Takenouchi Shikibu 82
 Taketori-monogatari 750
 Taki Shikataro 785
 Tanaka, General 141
 Tanizaki Junichiro 754
 Tanomoshi-ko 70
 Taxes, Revised 281-296
 Tea 551
 Teachers, Training of 670
 Telegrams 569
 Telegraph Service 568
 Telegraph Stations 568
 Telegraphy, First Installation of 85
 Telephone 571
 — Invention of 101
 Tempo Era 99
 Tenant Disputes 615
 Tennis 803
 Tenno 109
 — Imperial Prerogative 110
 Tennoji Temple 758
 Tenryuji Boats 68
 Terakoya 67, 80, 648
 Terauchi, General 139
 Territories 15
 Textiles Consumption Tax 295
 Textile Industry 482-500
 — Statistics for 1938 482
 Thailand 106
 Thirty Years' War 98
 Thompson, Dr. 681
 Thought Offence 625
 Three Sacred Treasures 110
 Thrift Drive 299
 Tientsin Issue 188
 Tientsin Treaty 100
 Tin 470
 Tobacco 424, 561
 Toba-sojo 761
 Todaiji Temple 759
 Togo, Admiral 90
 Tojo Hideki 123
 Tokaido 77
 Tokugawa Hidetada 73
 Tokugawa Iyesato 137
 Tokugawa Iyemitsu 80
 Tokugawa Iyeshige 83
 Tokugawa Iyeyasu 73
 Tokugawa Mitsukuni 82
 Tokugawa Shogunate, Organization of 74
 Tokugawa Yoshimune 81
 Tokugawa Yoshinobu 83
 Tokyo 833-841
 — Administration 840
 — Buildings 833
 — Commerce 834
 — Education 838
 — Finance 841
 — Industry 835
 — Parks 838
 — Population 833
 — Religion 839
 — Sewerage 837
 — Social Work 839
 — Transportation 835
 — Waterworks 837
 Tokyo Made Capital 84
 Tokyo School of Music 783
 Tomatoes 424
 Toneri-shinno 749
 Topknots, Cut off 85
 Tosa-nikki 750
 Tosa Yoshimitsu 762
 Tourist Industry 587
 Towada, Lake 32
 Town 131
 Toyotomi Hideyoshi 71
 Trachoma 709
 Trade Agreements, 1939-1940 196-199
 Trade Expansion 371
 Trade Unions 616
 Trafalgar, Battle of 99
 Tramcar Service 580
 Transportation, Land and Air 576-588
 Trautmann, O. P. 1010
 Travelling Tax 293
 Trawling Fishery 448
 Trust Business 313
 Trust Companies 314
 Tsingtao, Fall of 91
 Tuan Chi-juei 995
 Tuberculosis 708
 U
 Ugaki, General 152, 155
 Ukiyoe 765
 Unemployment 605, 697
 Unemployment Relief 699
 Universal Suffrage 103, 140
 Universities 662
 Unkei, the Sculptor 763
 Unwritten Provisions 109
 Unzen 33
 Urbanization 47
 Uyehara, General 138
 Uyemura Masahisa 682
 V
 Vaccination 711
 Vasco da Gama 97
 Vegetable Fertilizers 531
 Vegetable Oils 536
 Verbeck, G. F. 682
 Versailles, Peace Conference of 103
 Victoria, Queen 100
 Vienna, Congress of 99
 Village 131
 Village Societies 425
 Vocational Classification 602
 Volcanic Chains 18
 Volley-ball 812
 W
 Wage Control 611
 Wages 606-610

Waka	64	Invention of	102	Yamaka Soko	86, 89, 135
Wakadoshiyori	74	Wireless Telephone	572	Yamanoeno-Okura	82
Wake Kiyomaro	64	Wishard, L. D.	682	Yamashina, H.I.H.	749
Waldeck, Governor	91	Witte, Russian Delegate	90	Prince	3
Wang Ching-wei	105, 998, 1004	Whales	447	Yasui Elji	123
Warehousing	589	Whaling, Antarctic	447	Yayoi Culture	55
War Ships	223	Wheat	421, 424	Yedo	73, 77
Wartime Economy	360	Wheat Flour	544	Yokohama	851-855
Waseda University	663-668	Woollen Industry	493	Yokohama Shokin	
Washington Conference	103, 168	Woollen Textiles	494	Ginko (Specie Bank)	308
Watches	508	Woollen Yarns	494	— Balance Sheet for	
Waterloo, Battle of	99	Working Hours	610	1939	309
Water-melons	424	World History, Chronicle of Important Events	93-107	Yonai Cabinet	163
Water Supplied to Households	525	World War	91, 168	Yonai Mitsumasa	121
Waterworks	524	World War, Second	190	Yose	817
Waterworks by Districts	524	Worms, Concordat of	95	Yoshida Shigeru	122
Watt's Steam Engine	99	Wrestling, Japanese	807	Yoshida Zengo	122
Wax	537	Wrestling, Western	812	Yoshino Park	32
Webb Bill	175	Wu Pei-fu	996	Y.M.C.A.	682
Weights and Measures	vi			Young Men's School	661
Weingartner, Felix	789			Y.M. and Y.W. Associations	673
Weingarten, Paul	786			Yuan Invasion	68
William II, King of Holland	81			Yuan Shih-kai	994
Williams, M. C.	681			Yuinno Shosetsu	79
Wine	548				
Wireless Telegraph Service	570				
Wireless Telegraphy,					

X

Xavier, Francis 69, 681

Y

Yakko 59
 Yamabeno-Akahito 749
 Yamada Kosaku 785
 Yamada Nagamasa 98
 Yamagata Aritomo

Z

"Zeppelin," World Flight of 103
 Zinc 471

英文日本年鑑

[版權所有]

昭和十五年十二月十五日印刷

昭和十五年十二月二十日發行

編輯兼發行人 末木徳之甫
 印刷人 小酒井吉藏
 印刷所 研究社印刷所
 東京市牛込區神樂町一ノ二

發行所 東京市麹町區內幸町二ノ一
 日本外事協會

The Foreign Affairs Association of Japan
 Osaka Building, Hibiya Park, Tokyo
 Japan

NIPPON GINKO

(THE BANK OF JAPAN)

HEAD OFFICE

TOKYO, JAPAN

BRANCHES:

Osaka, Moji, Nagoya, Otaru, Kyoto,
 Fukushima, Hiroshima, Hakodate,
 Kanazawa, Niigata, Matsumoto, Akita,
 Kumamoto, Matsue, Okayama, Kobe,
 and Matsuyama

GOVERNOR:

TOYOTARO YUKI, Esq.

VICE-GOVERNOR:

JUITI TSUSHIMA, Esq.



THE NIPPON KOGYO GINKO

(The Industrial Bank of Japan, Ltd.)

ESTABLISHED 1902

Capital - - - - - 200,000,000 Yen

HEAD OFFICE:

Marunouchi, Tokyo, Japan

Governor: I. HORAI, Esq.

Vice-Governor: K. KAWAKAMI, Esq.

Directors:

R. WATANABE, Esq.

K. FUKUOKA, Esq.

E. UEYAMA, Esq.

K. ITOH, Esq.

Auditors:

Count Y. FUTARA.

E. SUGANO, Esq.

K. KATAOKA, Esq.

BRANCHES:

TOKYO, OSAKA, KOBE, NAGOYA, FUKUOKA, FUKUSHIMA,
TOYAMA, HIROSHIMA, SAPPORO

Correspondents:—In the principal cities at home and
London, New York, San Francisco and Paris.



The One Hundredth Bank, Ltd.

HEAD OFFICE:

Tori-1 Tchome, Nihonbashi-ku,

TOKYO

President: ZENSAKU SEKINE Esq.

BRANCHES & AGENCIES:

Approximately 100 Branches or Agencies in
important cities in Japan, including principal
Branches in Tokyo, Yokohama, Kobe, Osaka,
Kyoto, Nagoya, Hiroshima, and Others.

Every Description of Banking Business

Transacted



The Yasuda Bank, Ltd.

(YASUDA GINKO, LIMITED)

HEAD OFFICE:

Ohtemachi, Kojimachi-ku, Tokyo.

Capital Subscribed ¥150,000,000

Reserves ¥ 78,000,000

Chairman of the Board:

HAJIME YASUDA, Esq.

Deputy Chairman:

HIROZO MORI, Esq.

Managing Directors:

HISOMU SONOBE, Esq.

YUZO HAMADA, Esq.

SHIRO FUJISAKI, Esq.

The Bank is now in command of not only One Hundred and Thirty Branches throughout Japan, but also of the services which it has secured from many correspondents over the world, and is able to offer accommodation for all kinds of banking facilities, foreign and domestic.

FOREIGN BUSINESS:

Tokyo Head Office:

Nagoya Branch: Minami-otsu-dori, Naka-ku.

Kobe Branch: Sakaemachi-dori.

Otaru Branch: Ironai-machi.

Yokohama Branch: Honcho, Naka-ku.

Osaka Branch: Koraibashi, Higashi-ku.



THE SANWA BANK LTD.

Capital Subscribed ¥ 107,200,000

Capital Paid-Up 72,000,000

Reserve Funds 42,860,000

Deposits (31/12/1939) 2,253,017,276

President: SADAHIKO NAKANE

Managing Directors:

Kiyohide Okano

Kenji Marukawa

Miki Yamada

Sadakuni Kato

Head Office: Imabashi 3-chome, Osaka

Tokyo Office: Muromachi 2-chome, Tokyo

153 Branches and 43 Sub-offices Throughout Japan

Osaka,

Kobe,

Kurume,

Tokyo,

Himeji,

Tokushima,

Nagoya,

Okayama,

Kochi,

Kyoto,

Hiroshima,

Keijo,

Nara,

Kure,

Taihoku,

Wakayama,

Fukuoka,

Tainan,

Takao, and other business centers.

Correspondents: Principal Cities at Home and Abroad.



Nomura Gomei Kaisha Osaka Japan.

Capital Paid-Up. ¥20,000,000.

The Nomura Bank, Ltd.

Capital. ¥20,000,000. Head Office, Osaka.

Nomura Securities Co., Ltd.

Capital. ¥10,000,000. Head Office, Osaka.

Nomura Trust Co., Ltd.

Capital. ¥10,000,000. Head Office, Osaka.

Nomura Life Insurance Co., Ltd.

Capital. ¥1,000,000. Head Office, Tokyo.

Yamato Sangyo Kaisha, Ltd.

Capital Paid-Up. ¥10,000,000. Head Office, Osaka.

**N. V. Nomura Oost-Indische
Cultuur Maatschappij.**

Capital F 5,000,000. Head Office, Bandjemasin Dutch Borneo

Nomura & Co., (S. S.) Ltd.

Capital Paid-Up. S. \$1,000,000. Head Office, Singapore.

Campania Agricola Nomura, Ltd.

Capital Paid-Up. 2,000,000 \$ 000. Head Office, Etado Do Parana Brasil.

Nomura Forestry Products Co., Ltd.

Capital Paid-Up. ¥500,000. Head Office, Osaka.

Choya Shirts Manufacturing Co., Ltd.

Capital Paid-Up. ¥500,000. Head Office, Osaka.

Standard Shoe Co., Ltd.

Capital Paid-Up. ¥1,400,000. Head Office, Tokyo.

Nouvelle Caledonie Mining Co., Ltd.

Capital. ¥5,000,000. Head Office, Tokyo.

Yamato Mining Co., Ltd.

Capital Paid-Up. ¥2,000,000. Head Office, Tokyo.

Nomura Securities Co., Ltd. of Manchoukuo.

Capital. ¥1,000,000. Head Office, Fengtien.

IWAI & CO. LTD.

ESTABLISHED IN 1871

**IMPORTERS, EXPORTERS
AND GENERAL MERCHANTS**

Capital - - - - - ¥ 15,000,000

President : MR. YUJIRO IWAI

44 Akashi-machi, Kobe-ku, Kobe

Cable Address : "IWAI KOBE"

P. O. Box : No. 175

All Principal Codes Used

Head Office : OSAKA

Exports—Cotton & Rayon Yarn & Textiles, Silk Textiles, Woolen Yarn & Textiles, Metals, Soda Ash, Caustic Soda, Chemicals, Paints & Varnishes, Celluloid Articles, Bristle, Plywood, Sundries, Etc.

Imports—Rubber, Etc., Etc.

BRANCHES : Kobe, Tokyo, Yokohama, Nagoya, Fukui, Yawata, London, New York, Melbourne, Shanghai, Hankow, Mukden, Dairen, Tientsin, Hsinking, Kwantung, Seoul, Manila, Bombay, Sourabaya.

AGENTS : Buenos-Aires, Johannesburg

REFERENCE : Yokohama Specie Bank, Ltd.

UNDER THE SAME MANAGEMENT

KANSAI PAINT CO., LTD., Kanzaki near Osaka

CHUO WOOL SPINNING CO., LTD., Osaka

TOKUYAMA SODA CO., LTD., Tokuyama

OSAKA STEEL SHEET GALVANIZING CO., LTD., Osaka

TOKUYAMA STEEL SHEET MFG. CO., LTD., Tokuyama

SHIROGANE HOSIERY FACTORY LTD., Tokyo

NIPPON BRIDGE CONSTRUCTION CO., LTD., Osaka

ESTABLISHED 1854

MARUBENI SHOTEN, LTD.

36 HONMACHI NICHOME
OSAKA, JAPAN
CAPITAL ¥10,000,000

TOKYO
KYOTO
NAGOYA
K O B E
FUKUI
ASHIKAGA
SEOUL
HARBIN
MUKDEN
DAIREN
TIENTSIN
TSINGTAO
SHANGHAI
HANKOW
BOMBAY

MANUFACTURERS
WHOLESALEERS
EXPORTERS
IMPORTERS
OF
TEXTILES, YARNS
AND
GENERAL GOODS

Cable Address: "APPOLICO"



"YOKOHAMA" TRUCK TIRES



How You Can Cut Your Truck Tire Costs in Half

*Here's a new truck tire constructed
to give two and three times the service
of old-type tires.*

*And because it costs no more than
ordinary tires, your truck tire costs go
down!*

THE YOKOHAMA RUBBER CO., LTD.

Export Dept.: Tokyo Japan. (P. O. Box No. 46 Shiba Tokyo)

**LA SOCIÉTÉ ANONYME
DE
L'EXPLOITATION DES MINES
DE
LA NOUVELLE CALÉDONIE**
(The New Caledonia Mining Co., Ltd.)

MINING & SHIPPING

Capital . . ¥ 5,000,000

President AKIRA SEO

HEAD OFFICE Nomura Bldg., Tori-1-chome
Nihonbashi-ku, Tokyo, Japan

BUSINESS OFFICE Numea, New Caledonia

NIPPON SUISAN KAISHA, LTD.

ESTABLISHED : 1925



CAPITAL : YEN 93,000,000

CHAIRMAN : Y. AIKAWA

PRESIDENT : K. TAMURA



PRINCIPAL LINES

Floating Canneries, Trawlers, Whaling Factory Ships,
Ice-making, Cold Storage, etc.
Canned Crab, Fresh Fish, Quick Frozen Foods, Whale
Oil and by-products, Canned Fish of many varieties
Fishing Nets, etc.

Head Office : Nissan Building, Tokyo

Cable Address : FOODS TOKYO

Branches : TOKYO, OSAKA, HAKODATE, TOBATA, KEELUNG,
KEIJO, HSINKING, PEKING, SHANGHAI

ROLLER FLOUR

BEST



GRADE

Nitto Seifun Kabushiki Kaisha

(NITTO FLOUR MILL CO., LTD.)

President: SHIMPEI MATSUMOTO, Esq.

CAPITAL	¥12,300,000
CAPITAL PAID UP	¥ 5,062,500
CAPACITY (DAILY)	5,600 barrels

Head Office: Yaesu Building, Marunouchi, Tokyo, Japan.

Manchoukuo Office: 2 Sumiyoshi 3-chome, Hsinking.



Factories:

Nagoya, Kumagaya, Chiba, Kizaki, Fukaya, Hsinking,
North-China.

AFFILIATED CONCERN

MANCHOUKUO NITTO FLOUR MILL CO., LTD.

THE KOBE SILK & RAYON EXPORTERS' ASSOCIATION

116, Higahimachi, Kobe-ku, Kobe, Japan

President: M. FUJII

Director: M. OKAZAWA



The most dependable and trustworthy source of supply
for every first class stationer.

The biggest exporters and manufacturers in the Orient
MASAKI YAMATO PENCIL CO., LTD.

620 Ohi-Tachiai, Shinagawa-ku, Tokyo, Japan.

Cable Address: Masakiya-Shinagawa. Daily Output: 3,000 Gross

Established in 1912

Cable Add. "TOURIST"

JAPAN TOURIST BUREAU

**All Travel Arrangements in Japan,
Manchoukuo, China, & Abroad**

- ☆ Itineraries & Information Gratis
- ☆ Railway, Steamship, Motor Car & Aeroplane Tickets
- ☆ Hotel Coupons & Reservation
- ☆ Guides & Couriers Furnished
- ☆ Inclusive and Conducted Tours
- ☆ Traveller's Cheques

HEAD OFFICE

1, Marunouti 1-tyome, Kozimatiku, Tōkyō



Offices in U.S.A.

Los Angeles, Calif.:
Chamber of Commerce
Building, 1151, South
Broadway.

New York City: The
International Bldg.,
Rockefeller Center.

Office in the Philippines

Manila: 117 Crystal
Arcade Escolta.

Office in Hongkong
N. Y. K. Branch, King's
Bldg.

Non-commercial organiza-
tion, aiming at promotion of
international friendship,
encouragement of travel,
and securance of closer
co-operation among those
interested in tourism.

The Japan Chronicle

DAILY & WEEKLY EDITIONS

ESTABLISHED 1891 & INCORPORATING
THE HIOGO NEWS ESTABLISHED 1868

RELIABLE FINANCIAL AND
COMMERCIAL INTELLIGENCE

The Best and Widest Advertising Medium

*Specimen Copy, Advertising and Subscription Rates sent
on application to the Business Manager:*

"JAPAN CHRONICLE," KOBE

SUBSCRIPTION:

DAILY EDITION:

¥ 3.50 per month ¥ 38 per annum

Post free in Japan

Postage abroad ¥ 3 extra per month

The WEEKLY EDITION of the JAPAN CHRONICLE

*contains all political, commercial, financial and general news and is well
adapted for mailing abroad, and for filing as a local record*

Published Every Thursday

¥ 5 per quarter ¥ 18 per annum

Post free in Japan

Abroad: ¥ 25 per annum, including postage

THE JAPAN TIMES & ADVERTISER

Japan presented through the Japanese; indispensable for realizing the fast moving situation in East Asia in general; to understand, appreciate the Leader-Empire, its roles, aspirations, immediate and ultimate goals in particular; The oldest established, only English-language daily in Tokyo under Japanese control; faithfully mirrors political, economic, cultural and social aspects.

Subscription Rates: 1 Year ¥55.00 (foreign, prepaid, ¥97.00); 6 months ¥28.00 (foreign, prepaid, ¥49.00).

THE JAPAN TIMES WEEKLY

A most popular publication, devoted to cultural activities and overseas trade; profusely illustrated; stands high above all others in East Asia; special feature articles and regular departments in every number; its Trade and Engineering Section highly reputed as authoritative sources for latest information in the field.

Subscription Rates: all prepaid; Domestic, 1 Year ¥17.00; 6 months ¥9.00; Foreign, 1 Year ¥23.00; 6 months ¥12.00.

EDITORIAL & BUSINESS OFFICE:

1, UCHISAIWAI-CHO, 1-CHOME, KOJIMACHI-KU, TOKYO

THE PAPER FOR THOSE WHO WANT TO KNOW

L

A National Newspaper For International Readers

The Osaka Mainichi & The Tokyo Nichi Nichi

Published in English Daily, Except Mondays

History is today being made with lightning tempo.

In addition to speed, the Osaka Mainichi and Tokyo Nichi Nichi offer to their English Edition readers the following:

JAPAN: An insight into what the Japanese are thinking. A day-to-day record, with many photographs, of what the Japanese are doing.

EAST ASIA: Full coverage of the news from the front and of the momentous events occurring in East Asia.

EUROPE & AMERICA: Reports from own correspondents in the key cities to cover the rapidly moving events. Greater lineage of foreign news than in the Japanese-language newspapers.

Subscription Rates:

Single Copies 7 sen

(Delivered by Carrier)

¥1.40 per month

(By Mail, Payable in Advance)

¥1.50 per month in Japan, Manchoukuo, and China

¥2.60 Elsewhere

(By the Year, Payable in Advance)

¥16.60 in Japan, Manchoukuo, and China

¥29.80 Elsewhere

The Osaka Mainichi Publishing Co.

Osaka Japan Tokyo

LI

THE PICTORIAL ORIENT

Formerly "Japan in Pictures"

• ASAHIGRAPH OVERSEAS EDITION •

HERE ARE PICTORIALS AND BOOKS
INTERPRETING THINGS JAPANESE

A Pictorial Monthly, interpreting Japan and things Japanese to the Western World in order to promote international understanding and friendship. Each edition of "Pictorial Orient" contains an extensive collection of pictures, done in rotogravure, with explanatory notes in English and French.

Printed and published on the 5th of each month, Subscription rates; Single copy 60 sen, postage 2 sen in Japan, 16 sen abroad.

Subscription rates for one year ¥6.74 in Japan, \$3.00 abroad, both postage prepaid, payable in advance.

Publishers

ASAHI SHIMBUN-SHA

Tokyo & Osaka, Japan

CONTEMPORARY JAPAN

A Review of Japanese Affairs

Leading Authorities on Current Issues
In Greater East Asia

Contemporary Japan is an invaluable aid
in understanding what is behind today's
news and tomorrow's headlines.



Subscription Rates

(postage prepaid)

Japan, China and Manchoukuo	U.S.A.	Elsewhere
A single copy ¥ 1.00	40 c.	1s. 6d.
One year ¥ 10.00	\$ 4.50	17s.

Published Monthly by
Foreign Affairs Association of Japan
Osaka Building, Hibiya Park, Tokyo

GOOD PRINTING PAYS

The pleasant impression created by good printing adds to the effectiveness of the printed matter. Good printing pays, because it is inviting, persuasive and easy to read.

*All Printing, Foreign and
Japanese, is Neatly
Done*

Printers of "THE JAPAN YEAR BOOK"
and "CONTEMPORARY JAPAN"

KENKYUSHA PRINTING CO.

KAGURA-CHO, USHIGOME-KU TOKYO

FOR YOUR FRIENDS.....
YOUR DISTINGUISHED
GUESTS.....
AND YOURSELF.....

There is no
rivals
in
the Market



Famous

NIKKA WHISKY

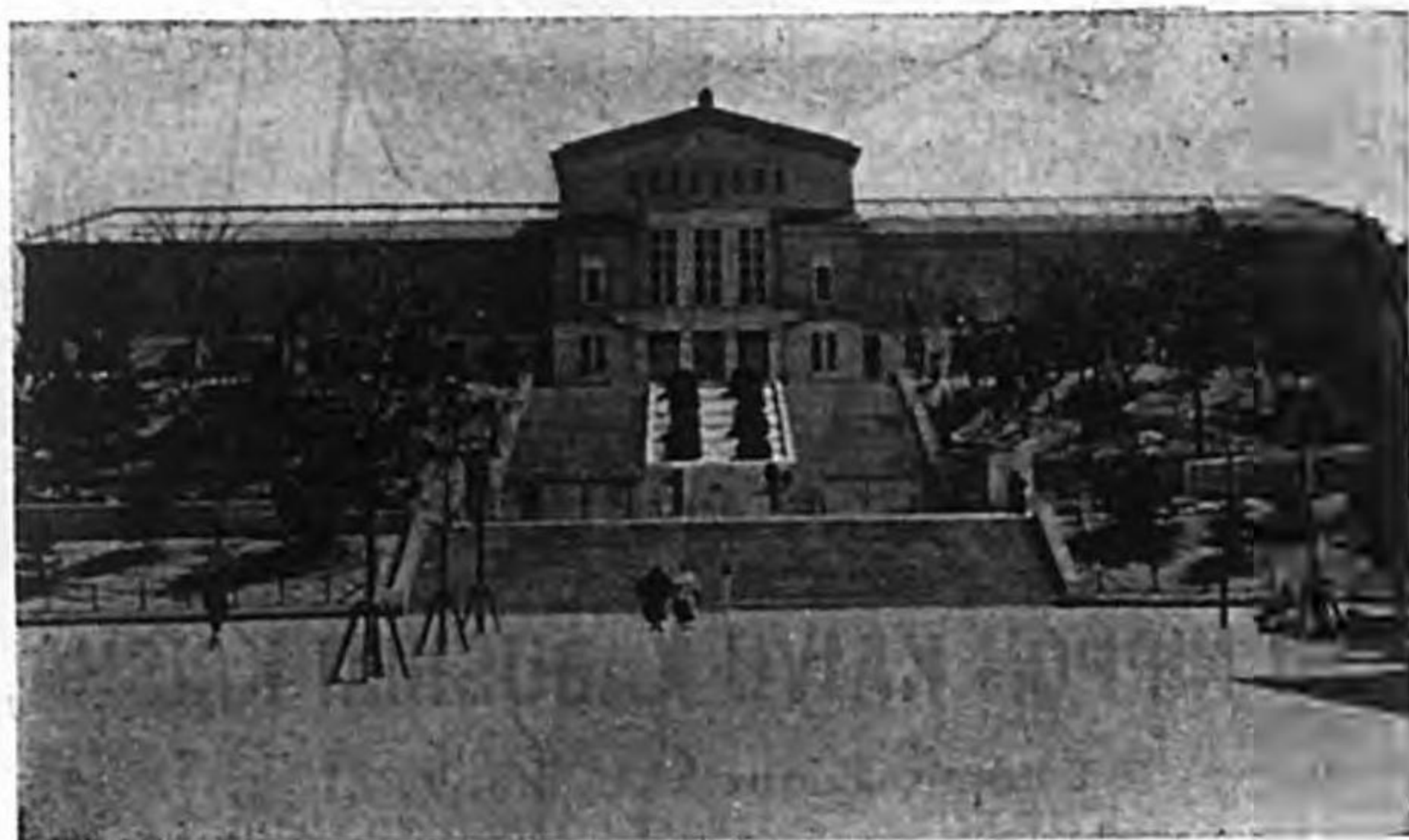
DAI NIPPON KAJYU KABUSHIKI KAISHA,

2 Chome, Edobashi, Nihonbashi-ku,
TOKYO



Most-modern Subways

Mayor: TOJI SAKAMA, Esq.



New Art Museum, Tennoji Park

City of Osaka

Japan's
Greatest
Industrial
Centre

MITSUBISHI CONCERNS

MITSUBISHI CO., LTD.

Cable Address:—IWASAKIGEN TOKYO
President: Baron KOYATA IWASAKI
Vice-President: Mr. HIKOYATA IWASAKI
CAPITAL:—¥240,000,000
Head Office:—Marunouchi, Tokyo

MITSUBISHI JUKÖGYÖ KABUSHIKI KAISHA

(Mitsubishi Heavy-Industries, Ltd.)
Cable Addresses:—
"IWASKIUK TOKYO"
"IWASKIAIR TOKYO"
Shipbuilders, Manufacturers of Engines,
Boilers & Machinery for Marine & Land
purposes; Designers & Constructors of Air-
craft & Aero-engines; Manufacturers of
Steel Plates, Casting & Forgings.
CAPITAL:—¥240,000,000
Head Office:—Marunouchi, Tokyo
Shipyards, Docks & Engine Works:—
Nagasaki, Kobe, Hiroshima & Yokohama
Arms Works:—Nagasaki, Steel Works:—
Nagasaki, Aircraft Works:—Nagoya, Aero-
engine Works:—Nagoya, Engineering
Works:—Tokyo.

MITSUBISHI SOKO KABUSHIKI KAISHA

(Mitsubishi Warehouse Co., Ltd.)
Cable Address:—
"IWASAKISOK TOKYO"
Landing, Shipping & Forwarding Agents;
Stevedores; Wharfingers; Customs Bro-
kers; Warehousemen.
CAPITAL:—¥20,000,000
Head Office:—Edobashi, Nihonbashi-ku,
Tokyo
Branches:—Yokohama, Nagoya, Osaka,
Kobe, Moji

MITSUBISHI SHOJI KAISHA, LTD.

(Mitsubishi Trading Co., Ltd.)
Cable Address:—
"IWASAKISAL TOKYO"
Importers & Exporters, Manufacturers,
Commission Merchants, Brokers,
Shipowners
CAPITAL:—¥50,000,000
Head Office:—Marunouchi, Tokyo.
Branches, Representatives & Agencies:
(Home) Fusan, Hakodate, Keelung, Keijo,
Kobe, Kure, Moji, Nagasaki, Niigata, Osaka,
Otaru, Sasebo, Seishin, Taihoku, Takao,
Yokohama, etc.
(Overseas) Alexandria, Antung, Baghdad,
Bangkok, Beirut, Berlin, Bombay, Buenos
Aires, Calcutta, Casablanca, Canton, Dairen,
Hankow, Harbin, Hongkong, Hsinking,
Johannesburg, Karachi, London, Lyons,
Madras, Manila, Melbourne, Mukden, Nan-
king, New York, Paris, Peking, Rangoon,
Rome, San Francisco, Santiago de Chile,
Seattle, Shanghai, Singapore, Soerabaya,
Sydney, Teheran, Tientsin, Tsinan, Tsing-
tao, Yingkow, etc.

MITSUBISHI KOGYO KAISHA, LTD.

(Mitsubishi Mining Co., Ltd.)
Cable Address:—
"IWASAKIMIN TOKYO"
Producers and Sellers of Coal, Metals &
Other Minerals.
CAPITAL:—¥203,700,000
Head Office:—Marunouchi, Tokyo.
Metal Mines:—Makimine, Osarizawa, Sado,
Ikuno, Akenobe, Hosokura, Ohira, Teine,
Washiaimori, Izushi, Takara, Kintei,
Mozan, Kenjiho, Ginryu, Kasi, etc.
Coal Mines:—Takashima, Bibai, Namazuta,
Shinnyu, Hojo, Kamiyama, Oyubari,
Rizuka, Sakito, etc.
Smelting & Refining Works:—Naoshima,
Osaka, Seishin.
Branches & Representatives: Tokyo, Yoko-
hama, Niigata, Shimizu, Fushiki, Tsuruga,
Wakamatsu, Moji, Nagasaki, Keijo, Otaru,
Muroran, Hakodate, Sapporo, Kushiro,
Aomori, Ominato, Funakawa, Sendai,
Sakata, Rumoye, etc.
Mining & Metallurgical Laboratory:—Omiya
(Saitama-ken).

THE MITSUBISHI BANK, LTD.

Cable Address:—
"IWASAKIBAK TOKYO"
General Banking & Exchange Business
CAPITAL:—¥100,000,000
Head Office:—Marunouchi, Tokyo
Branches:—Tokyo, Osaka, Kobe, Kyoto,
Nagoya, Otaru, Kokura, Shanghai, Dairen,
London, New York.

MITSUBISHI DENKI KABU- SHIKI KAISHA

(Mitsubishi Electric Manufacturing
Co., Ltd.)
Cable Address:—
"IWASAKILEC TOKYO"
Manufacturers of Generators, Motors,
Transformers, Other Electrical Machinery,
Air Brake Apparatus, Door Control Engines,
etc.
CAPITAL:—¥60,000,000
Head Office:—Marunouchi, Tokyo
Works:—Kobe, Nagasaki, Nagoya, Tokyo,
Ofuna.

MITSUBISHI TRUST CO., LTD.

Cable Address:—
"IWASAKITRU TOKYO"
General Trust Business.
CAPITAL:—¥30,000,000
Head Office:—Marunouchi, Tokyo
Branch:—Osaka, Nagoya

MITSUBISHI ESTATE CO., LTD.

Cable Address:—
"IWASAKILAD TOKYO"
Owners & Controllers of Estates & Buildings
CAPITAL:—¥15,000,000
Head Office:—Marunouchi, Tokyo.

ESTABLISHED 1865

KASHIMA GUMI, LTD.

**CIVIL ENGINEERS,
CONTRACTORS,
DESIGNING ARCHITECTS**

Capital Paid-up . . Yen 3,500,000

HEAD OFFICE :

3, Maki-cho 2-chome, Kyobashi-ku,
Tokyo.

BRANCHES :

Osaka, Fukuoka, Sapporo, Taihoku,
Keijo, Peking



President :
Dr. Morinosuke Kashima

MANCHOU KASHIMA GUMI, Ltd.

Capital Paid-up Yen 1,500,000

Head Office :

33, Yayoi-cho, Yamato-ku, Mukden

Established
in 1887



Capital
¥1,500,000

CIVIL AND BUILDING CONTRACTORS ZENITAKA GUMI, LTD.

President : HISAKICHI ZENITAKA

HEAD OFFICE

3-chome, Tosabori-Dori, Nishi-ku, Osaka

Tokyo Office : 5-chome, Kobiki-cho, Kyobashi-ku,
Tokyo

Branches : Nagoya, Kobe, Moji, Dairen

China Offices : Peking, Tientsin, Shanghai, Tsinan,
Shihkiachwang



MANCHOUKUO ZENITAKA GUMI, LTD.

Capital ¥2,000,000

No. 18, Yashima-dori, Hsinking

Branches : Mukden, Harbin, Anzan



See JAPAN

Unique Vacation Land
All the Year Round
Featuring Oriental Glamour
With Western Amenities

• *For information and literature, apply to your travel agent*

Or **JAPAN TOURIST BUREAU**
HEAD OFFICE: MARUNOUTI, TOKYO.

NEW YORK: 630 Fifth Ave. LOS ANGELES: 1151 South Broadway
PEKING: Wang Fu Ching Ta Chich. SHANGHAI: 110 Szechuen Road
HONGKONG: King's Bldg., MANILA: 117 Crystal Arcade, Escolta
8 Connaught Road. BUENOS AIRES: Florida No. 746

BOARD OF TOURIST INDUSTRY
JAPANESE GOVERNMENT RAILWAYS

LX

» Takeda «

FINE CHEMICALS & SPECIALTIES



BRANCHES AND REPRESENTATIVES

Mukden
Dairen
Peking
Tientsin
Shanghai
Hankow
Canton
Manila
Bangkok

Batavia
Singapore
Rangoon
Bombay
Calcutta
Karachi
Alexandria
Mombasa
Sydney

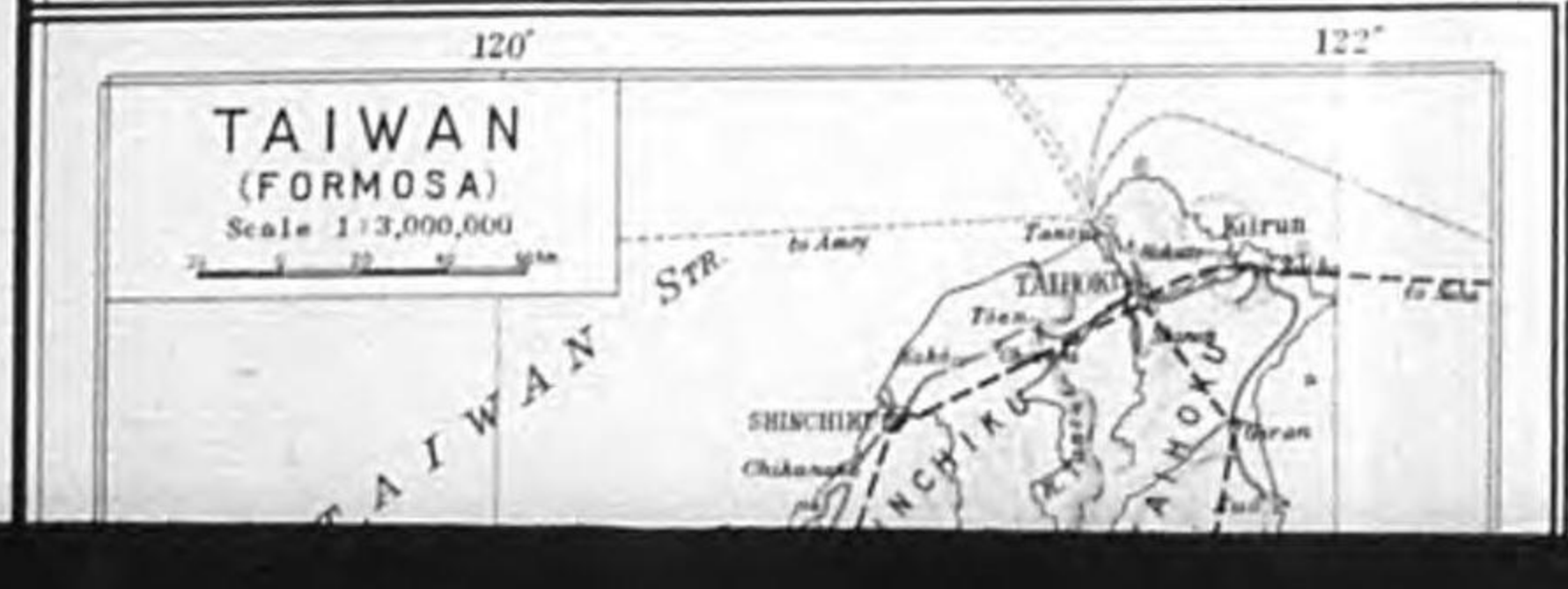
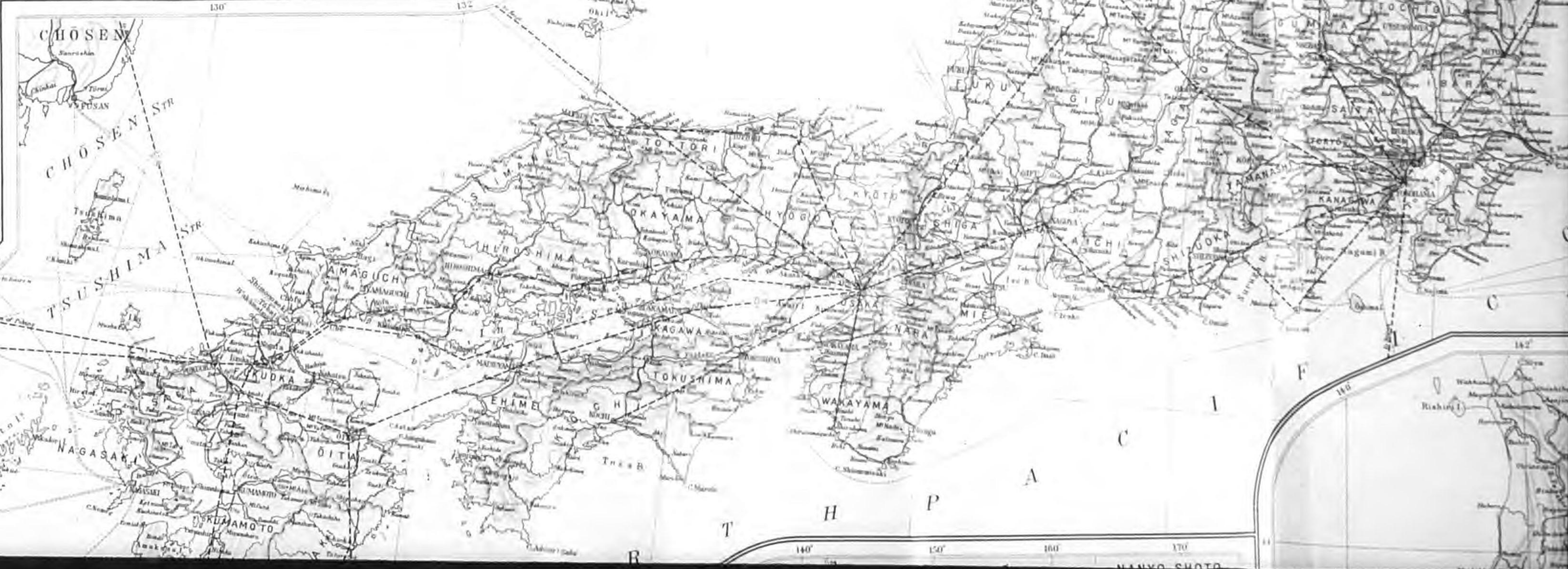
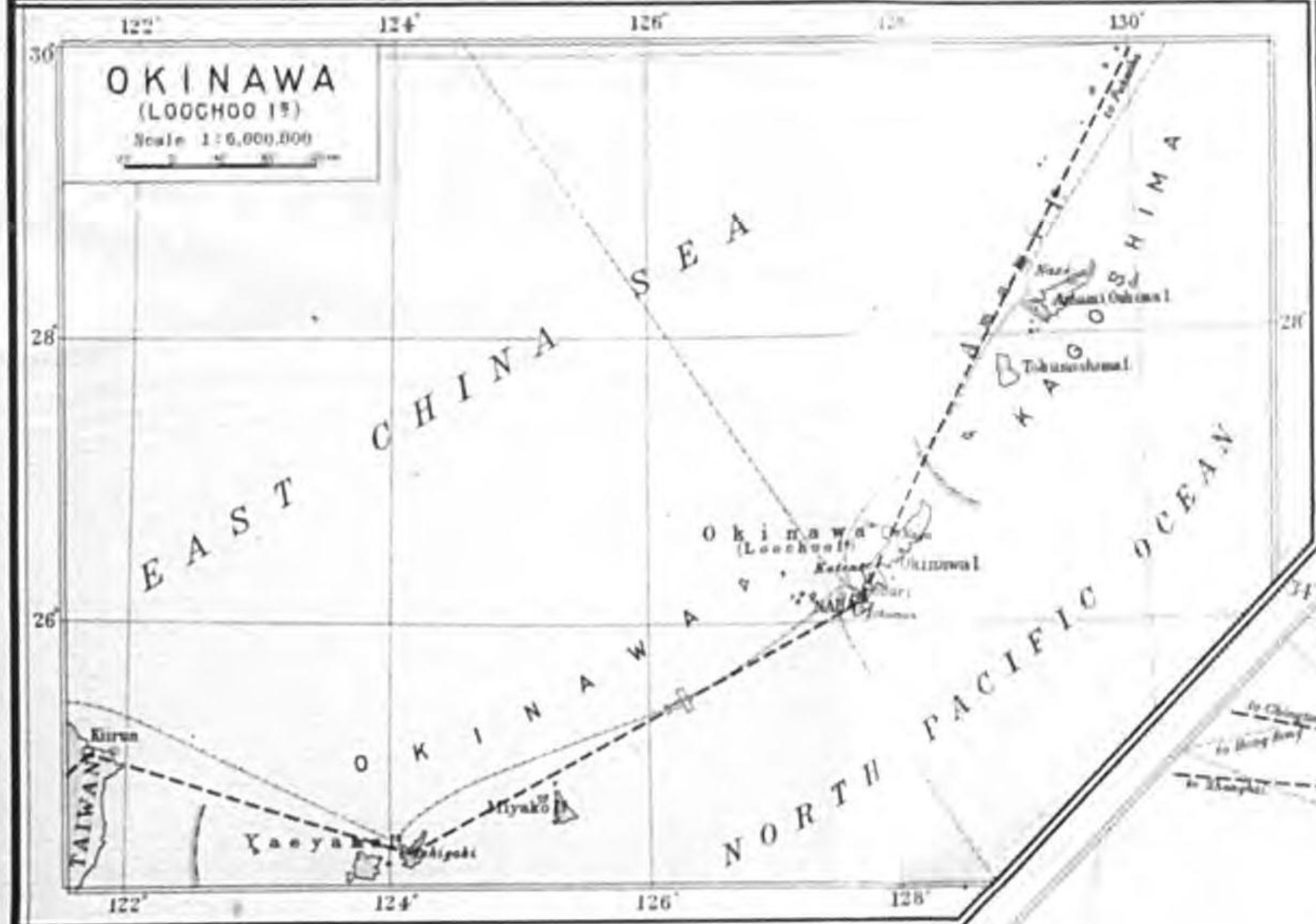
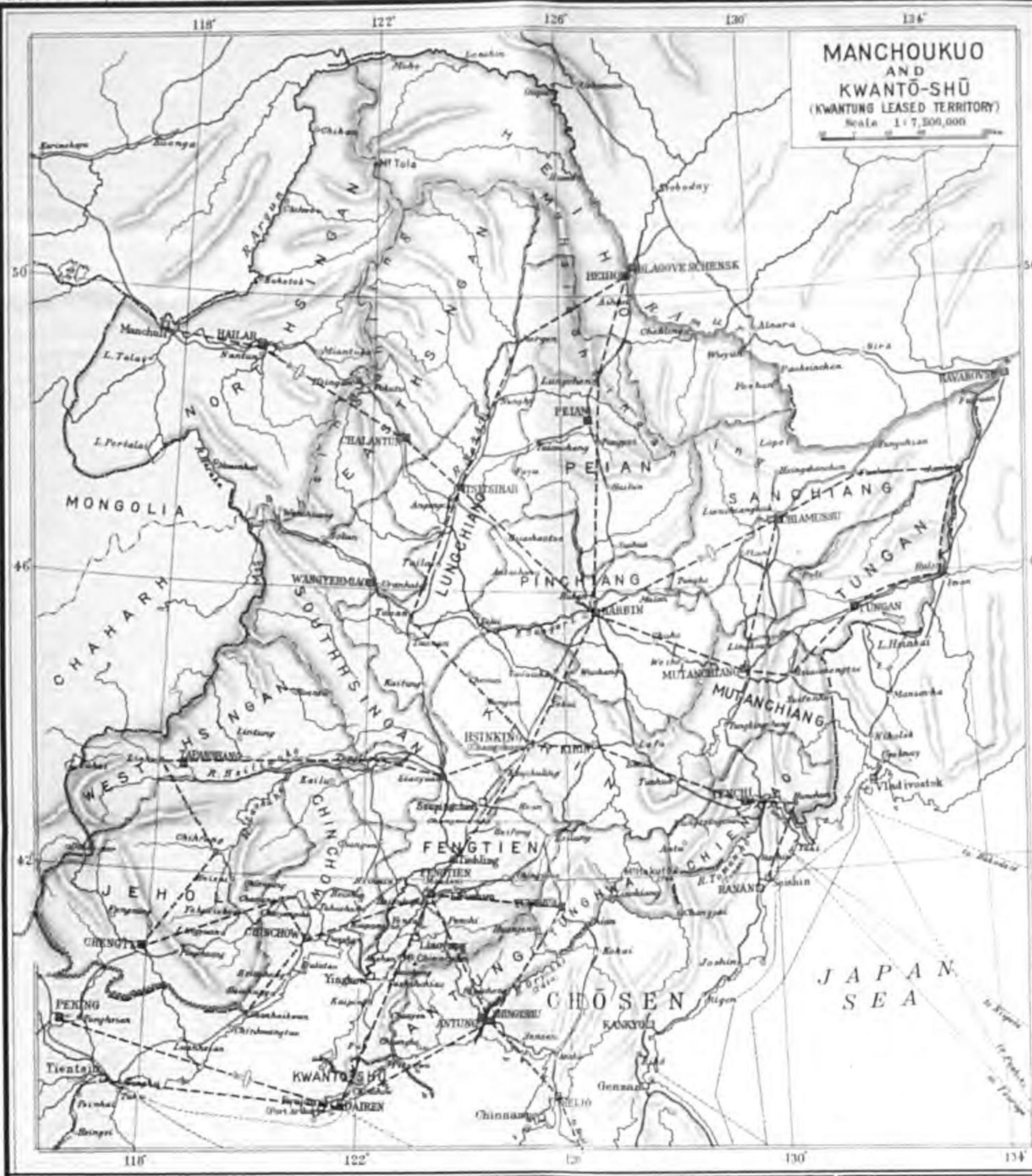
Honolulu
Los Angeles
Mexico City
Panama City
Buenos Aires
La Paz
Lima
Guayaquil



Ch. Takeda & Co., Ltd.
MANUFACTURING PHARMACISTS
OSAKA JAPAN

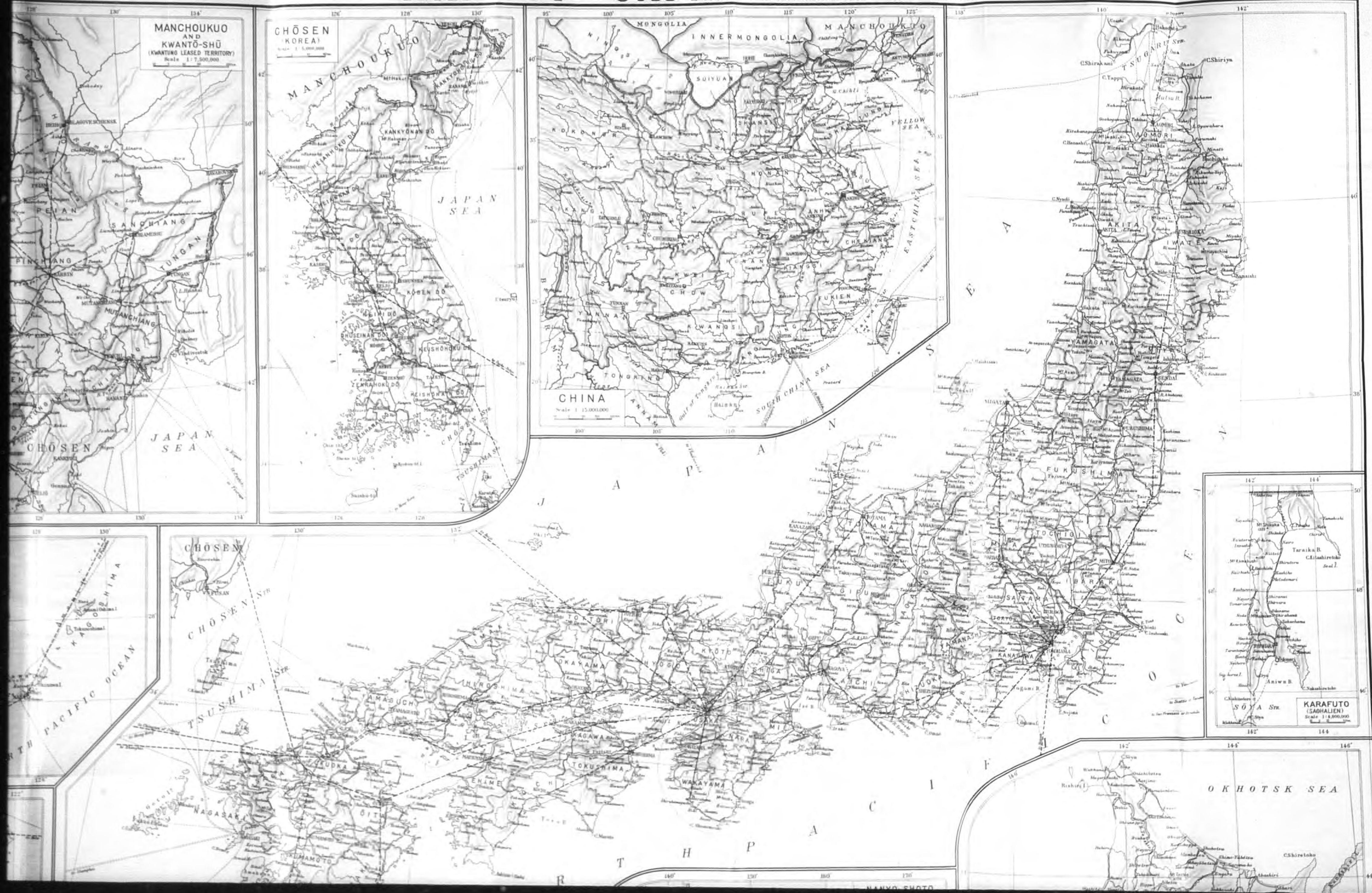
MAP OF JAPAN MANCHOUKUO AND CHINA

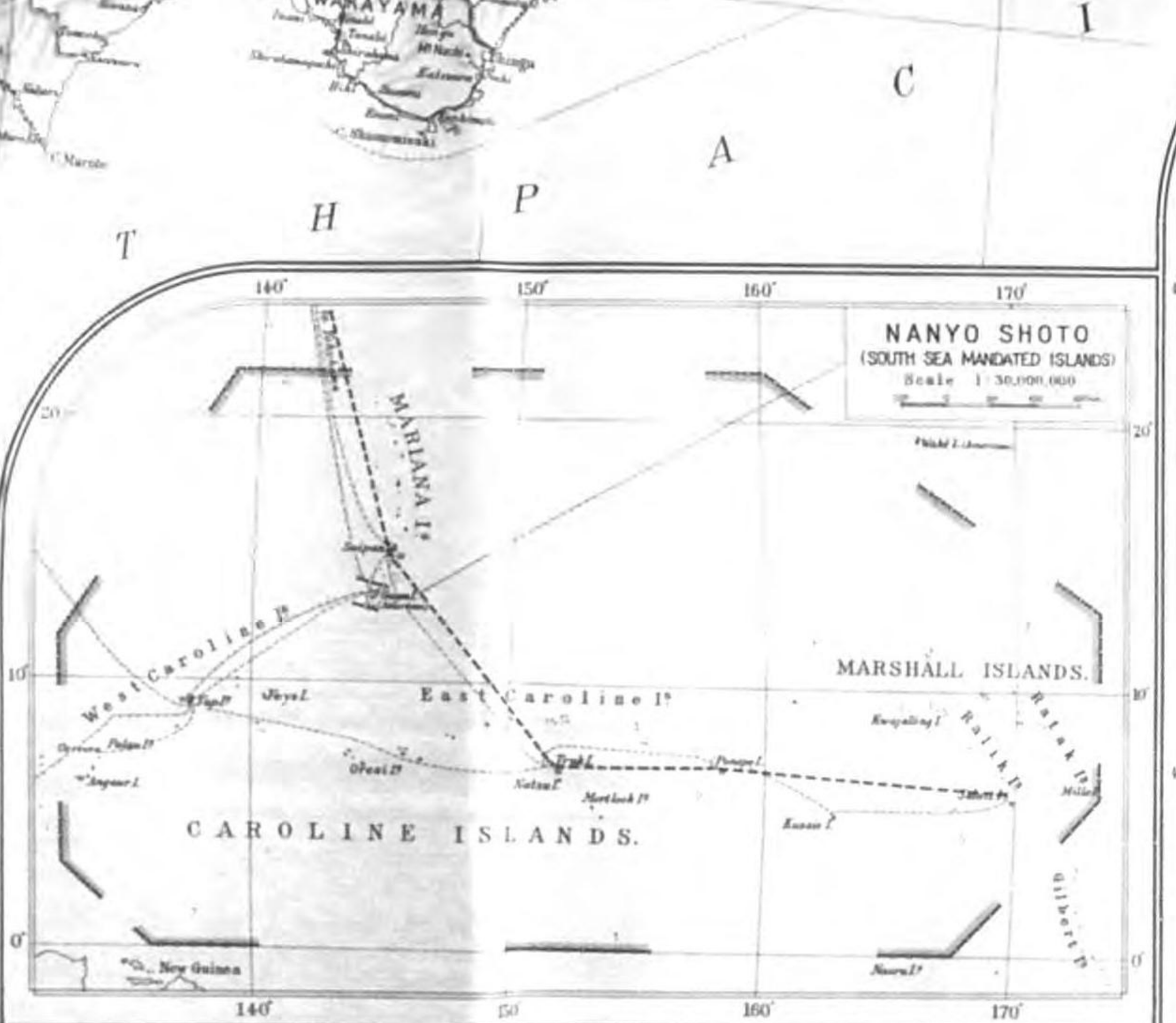
Based on the Japan Year Book 1940-41

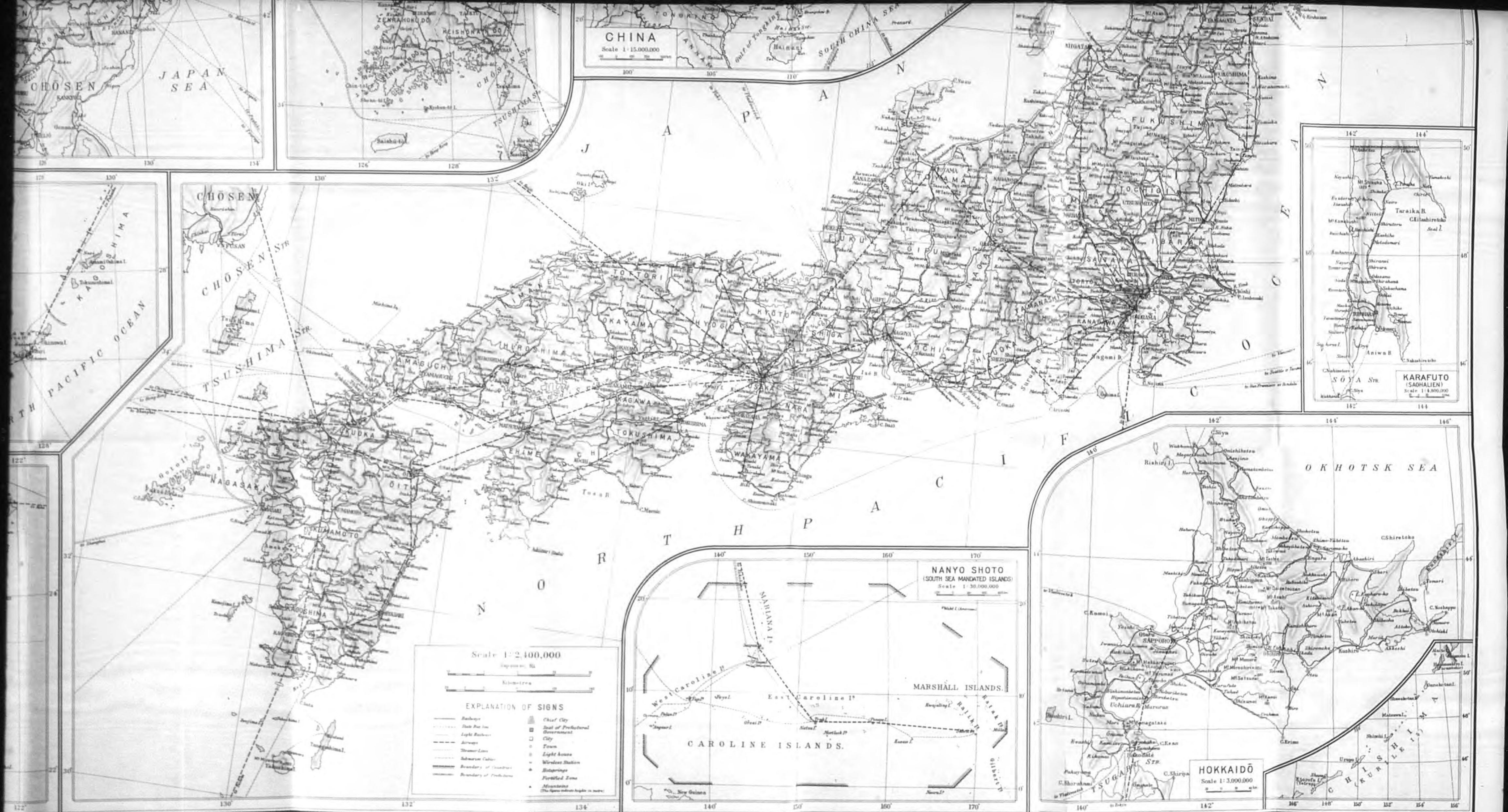


MAP OF JAPAN MANCHOUKUO AND CHINA

The Foreign Affairs Association of Japan







CHINA

Scale 1:15,000,000

NANYO SHOTO (SOUTH SEA MANDATED ISLANDS)

Scale 1:30,000,000

HOKKAIDŌ

Scale 1:3,000,000

Scale 1:2,400,000

Depicting in Miles
Kilometres

EXPLANATION OF SIGNS

—●—	Railways	■	Chief City
—○—	State Railways	□	Seat of Prefectural Government
—○—	Light Railways	□	City
—○—	Airways	○	Town
—○—	Steam Lines	○	Light House
—○—	Submarine Cables	○	Wireless Station
—○—	Boundary of Coast	○	Bishoprics
—○—	Boundary of Prefecture	○	Fortified Zone
—○—		○	Mountains (The figure shows height in meters)

INTERNATIONAL PROSECUTION SECTION

Doc. Nos. 1770 - 1771 - 1772 -
1773 - 1774 - 1775 -
1776 - 1777 - ~~1778~~ -
- 1779 - 1780 -

3 June 1946

ANALYSIS OF DOCUMENTARY EVIDENCE

DESCRIPTION OF ATTACHED DOCUMENTS.

Title and Nature: "Japan Year Book" published by Foreign Affairs Assn. of Japan.

Date: 1931-45, Original () Copy (x) Language: English
incl.

Has it been translated? Yes () No (x)
Has it been photostated? Yes () No (x)

LOCATION OF ORIGINAL:

SOURCE OF ORIGINAL: Ueno Library; Foreign Affairs Assn. of Japan

PERSONS IMPLICATED:

CRIMES TO WHICH DOCUMENT APPLICABLE:

SUMMARY OF RELEVANT POINTS:

Contains annual comprehensive data on trade, politics, foreign relations, industry, etc. Yearly editions have been assigned following document numbers:

<u>Doc. No.</u>	<u>Years</u>
1770	1938-39
1771	1931
1772	<u>(RESERVED FOR 1932 Edition)</u>
1773	1933
1774	1934
1775	1935
1776	1936
1777	1937
1778	1940-41
*	1941-42
1779	1942-43
1780	1944-45

(* 1941-42 Edition is our Doc. No. 1756)

Analyst: W. H. Wagner

1770,
DOC.#1771, 2, 3,
4, 5, 6, 7, 8, 9
and 1780.

INTERNATIONAL PROSECUTION SECTION

Doc. Nos. 1770 - 1771 - 1772 -
1773 - 1774 - 1775 -
1776 - 1777 - 1778 -
- 1779 - 1780 -

3 June 1946

ANALYSIS OF DOCUMENTARY EVIDENCE

DESCRIPTION OF ATTACHED DOCUMENTS.

Title and Nature: "Japan Year Book" published by Foreign Affairs Assn. of Japan.

Date: 1931-45, Original () Copy (x) Language: English
incl.

Has it been translated? Yes () No (x)
Has it been photostated? Yes () No (x)

LOCATION OF ORIGINAL:

SOURCE OF ORIGINAL: Ueno Library; Foreign Affairs Assn. of Japan

PERSONS IMPLICATED:

CRIMES TO WHICH DOCUMENT APPLICABLE:

SUMMARY OF RELEVANT POINTS:

Contains annual comprehensive data on trade, politics, foreign relations, industry, etc. Yearly editions have been assigned following document numbers:

<u>Doc. No.</u>	<u>Years</u>
1770	1938-39
1771	1931
1772	(RESERVED FOR 1932 Edition)
1773	1933
1774	1934
1775	1935
1776	1936
1777	1937
1778	1940-41
*	1941-42
1779	1942-43
1780	1944-45

(* 1941-42 Edition is our Doc. No. 1756)

Analyst: W. H. Wagner

1770,
DOC.#1771, 2, 3,
4, 5, 6, 7, 8, 9
and 1780.

INTERNATIONAL PROSECUTION SECTION

Doc. Nos. 1770 - 1771 - 1772 -
1773 - 1774 - 1775 -
1776 - 1777 - 1778 -
- 1779 - 1780 -

3 June 1946

ANALYSIS OF DOCUMENTARY EVIDENCE

DESCRIPTION OF ATTACHED DOCUMENTS.

Title and Nature: "Japan Year Book" published by Foreign Affairs Assn. of Japan.

Date: 1931-45, Original () Copy (x) Language: English
incl.

Has it been translated? Yes () No (x)
Has it been photostated? Yes () No (x)

LOCATION OF ORIGINAL:

SOURCE OF ORIGINAL: Ueno Library; Foreign Affairs Assn. of Japan

PERSONS IMPLICATED:

CRIMES TO WHICH DOCUMENT APPLICABLE:

SUMMARY OF RELEVANT POINTS:

Contains annual comprehensive data on trade, politics, foreign relations, industry, etc. Yearly editions have been assigned following document numbers:

<u>Doc. No.</u>	<u>Years</u>
1770	1938-39
1771	1931
1772	(RESERVED FOR 1932 Edition)
1773	1933
1774	1934
1775	1935
1776	1936
1777	1937
1778	1940-41
*	1941-42
1779	1942-43
1780	1944-45

(* 1941-42 Edition is our Doc. No. 1756)

Analyst: W. H. Wagner

1770,
DOC.#1771, 2, 3,
4, 5, 6, 7, 8, 9
and 1780.