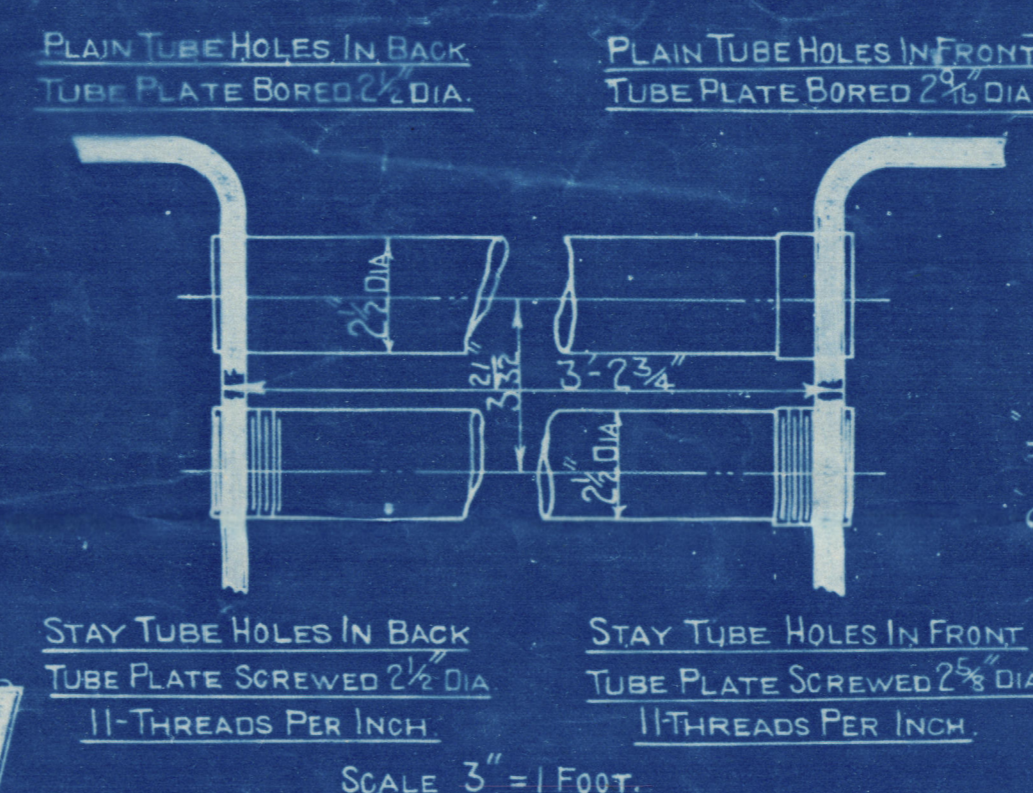
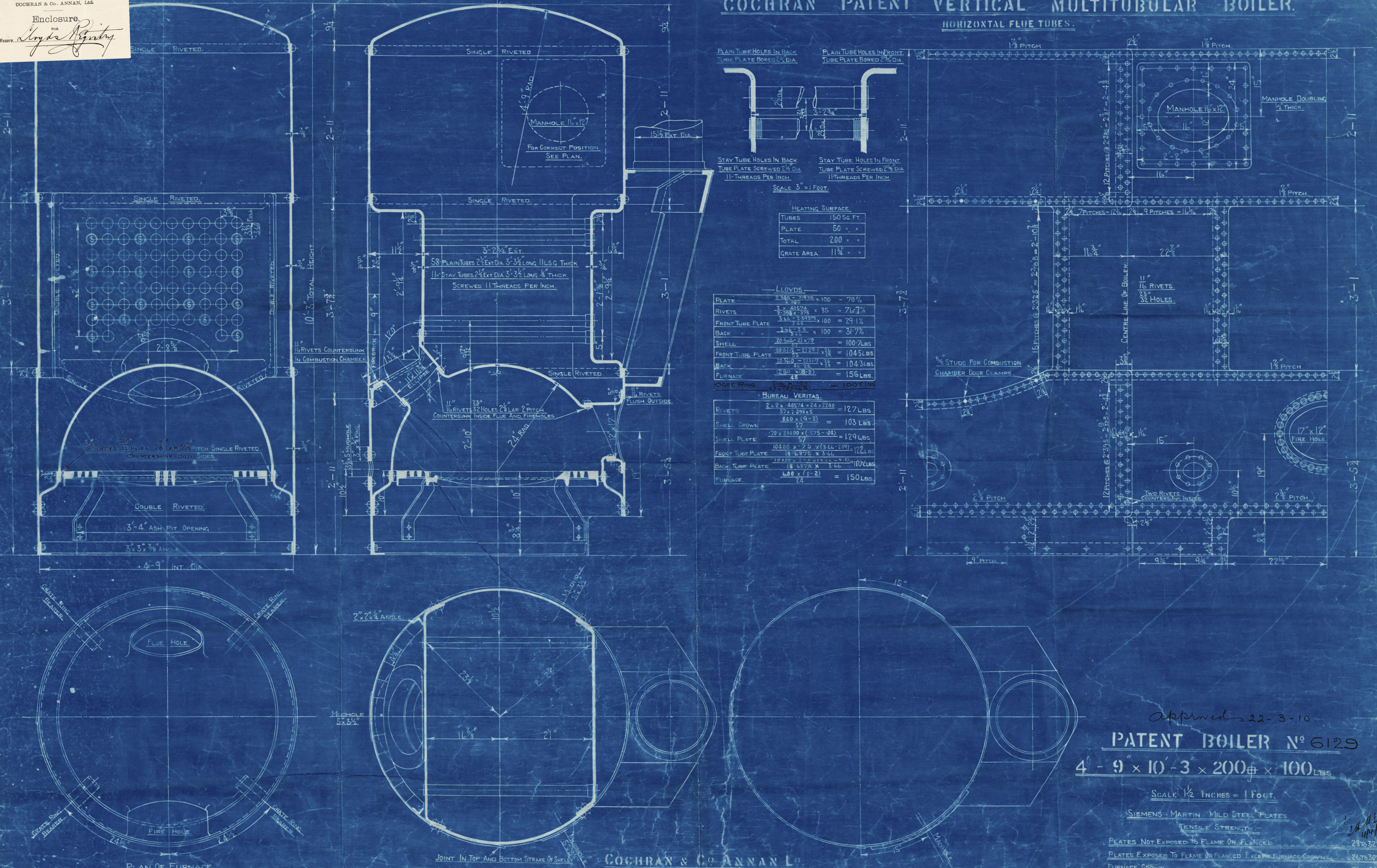


Enclosure.

FOR
Messrs. *Lloyds Register*

COCHRAN PATENT VERTICAL MULTITUBULAR BOILER.
HORIZONTAL FLUE TUBES.



HEATING SURFACE.

TUBES	150 SQ. FT.
PLATE	50 " "
TOTAL	200 " "
GRATE AREA	11 3/4 " "

— LLOYDS —

PLATE	2.385 = 71875 x 100 = 70%
RIVETS	2 x 40574 = 81148 x 95 = 77.17%
FRONT TUBE PLATE	3.64 = 233375 x 100 = 29.1%
BACK " "	3.66 = 235 x 100 = 31.7%
SHELL	20.540 = 21291 x 95 = 100.7%
FRONT TUBE PLATE	20.510 = 21291 x 95 = 104.5%
BACK " "	20.540 = 21291 x 95 = 104.3%
FURNACE	1250 x 18 = 22500 = 156 LBS.
OGEE RING	516 x 10 = 5160 = 100'S LBS.

— BUREAU VERITAS —

RIVETS	2 x 2 x 40574 x 24 x 2240 = 127 LBS.
SHELL CROWN	57 x 2.395 x 5 = 103 LBS.
SHELL PLATE	.70 x 31400 x (.375 - .00) = 129 LBS.
FRONT TUBE PLATE	10400 x .75 x (3.66 - 2.91) = 172 LBS.
BACK TUBE PLATE	10400 x .75 x (3.66 - 2.91) = 172 LBS.
FURNACE	600 x (18 - 2) = 150 LBS.

Approved 22-3-10.
PATENT BOILER N^o 6129
4 - 9" x 10' - 3" x 200# x 100 LBS.

SCALE: 1/2 INCHES = 1 FOOT.

SIEMENS-MARTIN MILD STEEL PLATES	TENSILE STRENGTH
PLATES NOT EXPOSED TO FLAME OR FLANGED	28 TO 32 TONS
PLATES EXPOSED TO FLAME OR FLANGED EXCEPT FURNACE CROWN	26 TO 30 TONS
FURNACE CROWN	26 TO 29 TONS

SURVEY-LLOYDS.
STANDARD.

COCHRAN & Co. ANNAN Ltd.
ENGINEERS & BOILERMAKERS
ANNAN, SCOTLAND.

LR
DRAWING NO 7625

94



© 2014

Lloyd's Register
SINGL
Foundation

7625

COSYDAN & CO., LONDON, LD.

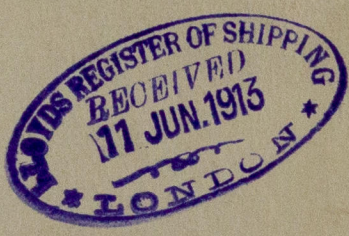
Order No. 6129

Drawing No. 7625

Hawthorn & Co S.S. 134
"The Ferguson"
Leith 14/4/8

GLASGOW REPORT No. 32817

W78-0239



© 2019

Lloyd's Register
Foundation