

GEORGE ENGELMANN  
BOTANICAL NOTEBOOKS

*Pagination Note:*

*Since many of the items lack a specific page number, the page number displayed online refers to the sequentially created number each item was given upon cataloging the materials.*



90 *J. Castaneus L*

*& affinis Indici*

231-241

112

SURGICAL CASES.

SURGICAL CASES.

ART. III.—*A Peculiar Manner of Ligating the Carotid Artery.* B  
JOHN T. HODGEN, M. D., Professor of Physiology in the Saint  
Louis Medical College.

A soldier having received a gun shot wound, July 3d, whilst in  
the trenches at Vicksburg, was removed from the regiment's  
hospital to the U. S. Hospital Steamer Crescent City for trans-  
portation to Memphis.

On examining the case it was found that the ball had entered  
the mouth and escaped just above the angle of the lower jaw on  
the right side.

The patient was prostrated from the loss of blood, though no  
hemorrhage had occurred for the last two days. On the morn-  
ing of the 9th, I was called in haste by the nurse, who informed  
me that the patient was bleeding to death. I found arterial  
blood flowing freely from the wound and mouth. I immediately  
plugged the wound with lint, saturated with a solution of per-  
chloride of iron, and held a roll of the same material saturated  
in like manner to the spot from which the blood issued inside



0 1 2 3 4 5 6 7 8 9 10  
cm

copyright reserved



MISSOURI  
BOTANICAL  
GARDEN



9157

MISSOURI BOTANICAL GARDEN  
GEORGE ENGELMANN PAPERS

SYPHILIS.

XXV. An important indication is to maintain or restore organic forces to a condition equal to the task of eliminating the virus. This is best obtained by a tonic and sustaining course, and namely: 1, by a nourishing and substantial diet, to which may be added the use of some pure old wine or light stimulants; 2, by the breathing of pure air, walks in the country, and frequent bathing; 3, by sufficient quiet sleep; 4, a residence in a dry room, well exposed to the light of the sun; 5, by a quiet, regular and continent life; 6, by the abstention of tobacco, for tobacco keeps up and propagates syphilis; it keeps it up, for mucous patches are not cured so long as the patient smokes; tobacco propagates syphilis, because a pipe-stem may transmit the virus.

XXXVI. Tertiary syphilis is not one of the periods of syphilis; it is syphilis which, from an enpoisoning, has become a diathesis, which, from an essentially transitory has passed into an essentially permanent state. It is not contagious; it is due to either the force of the virus or to the want of resistance of



0 1 2 3 4 5 6 7 8 9 10  
cm

copyright reserved



MISSOURI  
BOTANICAL  
GARDEN



*Juncus castaneus* Smith  
Colorado, Hall, 566

Aug 19 1865

x60



x10



In one instance  
seen 7 complete  
and an 8<sup>th</sup> incom-  
plete stamen

x60



Testa loose  
easily removed  
from seed

3 1/2 mm long

Not quite  
ripe

seed striped  
of testa



0 1 2 3 4 5 6 7 8 9 10

cm

copyright reserved



MISSOURI  
BOTANICAL  
GARDEN



**ALEX. LEITCH,**  
**APOTHECARY & PHARMACEUTIST,**

Marble Building Cor. Fourth & Olive Sts. St. Louis, Mo.

MISSOURI BOTANICAL GARDEN  
GEORGE ENGELMANN PAPERS

9158



0 1 2 3 4 5 6 7 8 9 10

cm

copyright reserved



MISSOURI  
BOTANICAL  
GARDEN



*J. castaneus*

Nov 22 1865

Norway

= Hb of Gray



Capsule (as in  
Stygian) nearly  
3-lobular below, 1-lobed  
above, the placenta not  
reaching to top.



seed stripped  
of testa  
indistinctly  
reticulate



0 1 2 3 4 5 6 7 8 9 10  
cm copyright reserved



MISSOURI  
BOTANICAL  
GARDEN



9154

ALEX. LEITCH,

APOTHECARY & PHARMACEUTIST,

COR. 4TH & OLIVE STS., ST. LOUIS.



MISSOURI BOTANICAL GARDEN  
GEORGE ENGELMANN PAPERS



0 1 2 3 4 5 6 7 8 9 10  
cm

copyright reserved



MISSOURI  
BOTANICAL  
GARDEN



*J. castaneus*

Nov 22 1865

J. N. S., Kumaon, 11300 feet high

R. Strachey & J. E. Winterbottom

= H. C. Gray

heads pariclete.

4-8 - num



0 1 2 3 4 5 6 7 8 9 10

cm

copyright reserved



MISSOURI  
BOTANICAL  
GARDEN



Alex. Leitch,

APOTHECARY & PHARMACEUTIST,

COR. 4TH & OLIVE STS., ST. LOUIS.



9160

MISSOURI BOTANICAL GARDEN  
GEORGE ENGELMANN PAPERS



0 1 2 3 4 5 6 7 8 9 10

cm

copyright reserved



MISSOURI  
BOTANICAL  
GARDEN



Nov 22 1865

*Juncus castaneus*,

Sikkim & Himalaya

Hooker f. & Thomson

oft paniculate!

inner sepals usually longer than outer ones,  
and broader. I find no other  
difference

The slender-sepalled variety coll. by Strachey &  
Winterbitch (Juncus No 2.3 & 4) from Himalaya  
& Tibet & Kumaon, have short stamens, &  
long restricted capsule as long or even shorter than  
sepals — These are equal, or the inner ones a little  
shorter

MISSOURI BOTANICAL GARDEN  
GEORGE ENGELMANN PAPERS  
HERBARIUM



0 1 2 3 4 5 6 7 8 9 10

cm

copyright reserved



MISSOURI  
BOTANICAL  
GARDEN





ALEX. LEITCH,

APOTHECARY & CHEMIST,

Cor. 4th and Olive Sts., St. Louis.



MISSOURI BOTANICAL GARDEN  
GEORGE ENGELMANN PAPERS

9161



0 1 2 3 4 5 6 7 8 9 10

cm

copyright reserved



MISSOURI  
BOTANICAL  
GARDEN



Nov 22 1865

Juncus N. 3

Kumaon, 14500'

Strachey & Winterbottom



0 1 2 3 4 5 6 7 8 9 10

cm

copyright reserved



MISSOURI  
BOTANICAL  
GARDEN



Alex. Leitch,

APOTHECARY & PHARMACEUTIST,

COR. 4TH & OLIVE STS., ST. LOUIS.



9162

MISSOURI BOTANICAL GARDEN  
GEORGE ENGELMANN PAPERS



0 1 2 3 4 5 6 7 8 9 10

cm

copyright reserved



MISSOURI  
BOTANICAL  
GARDEN



*J. Castaneus*

March 19

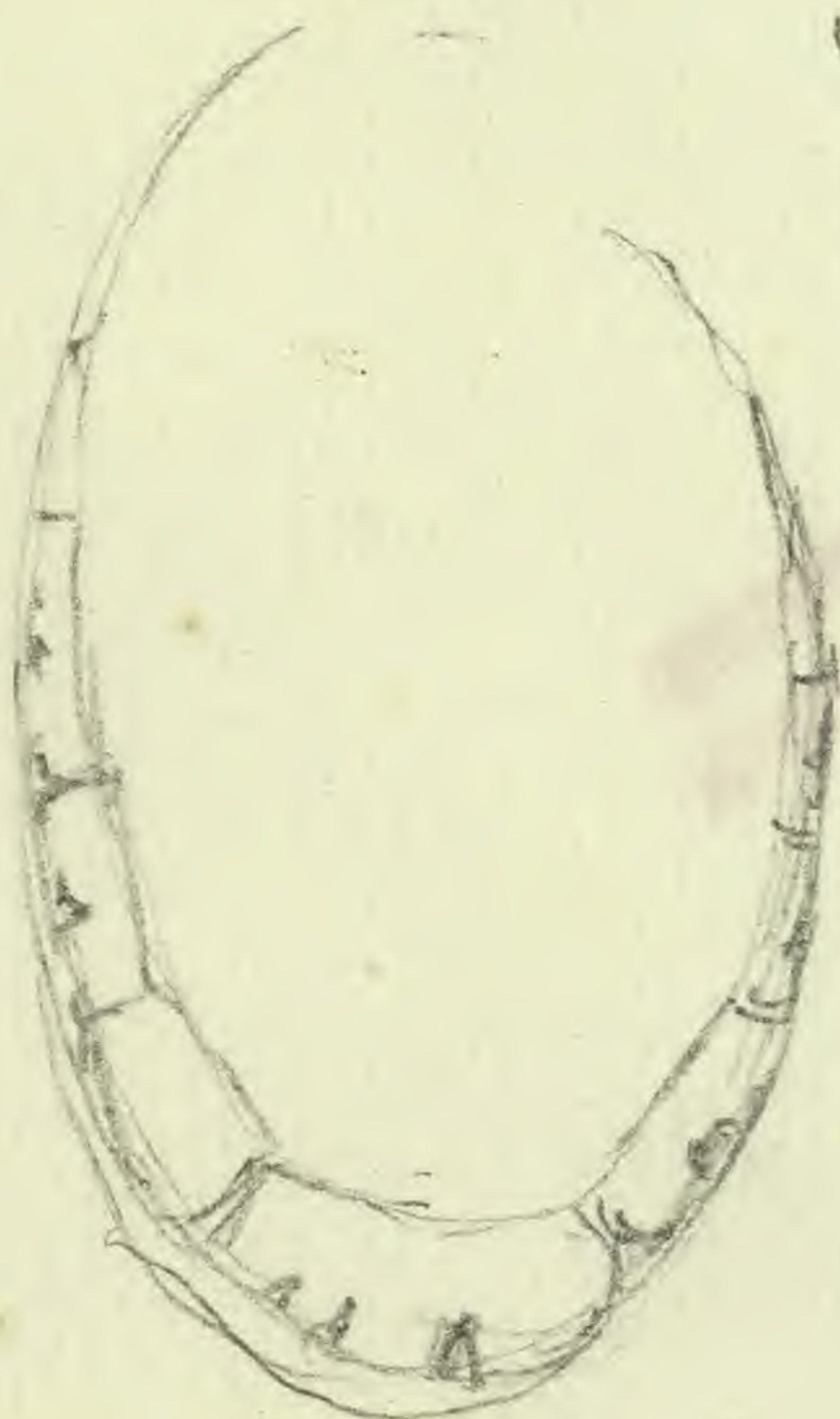
1866

Section of leaf x10

*Lapponia*



*Colorado*



MISSOURI BOTANICAL GARDEN

HERBARIUM

MISSOURI BOTANICAL GARDEN

HERBARIUM



0 1 2 3 4 5 6 7 8 9 10

cm

copyright reserved



MISSOURI  
BOTANICAL  
GARDEN



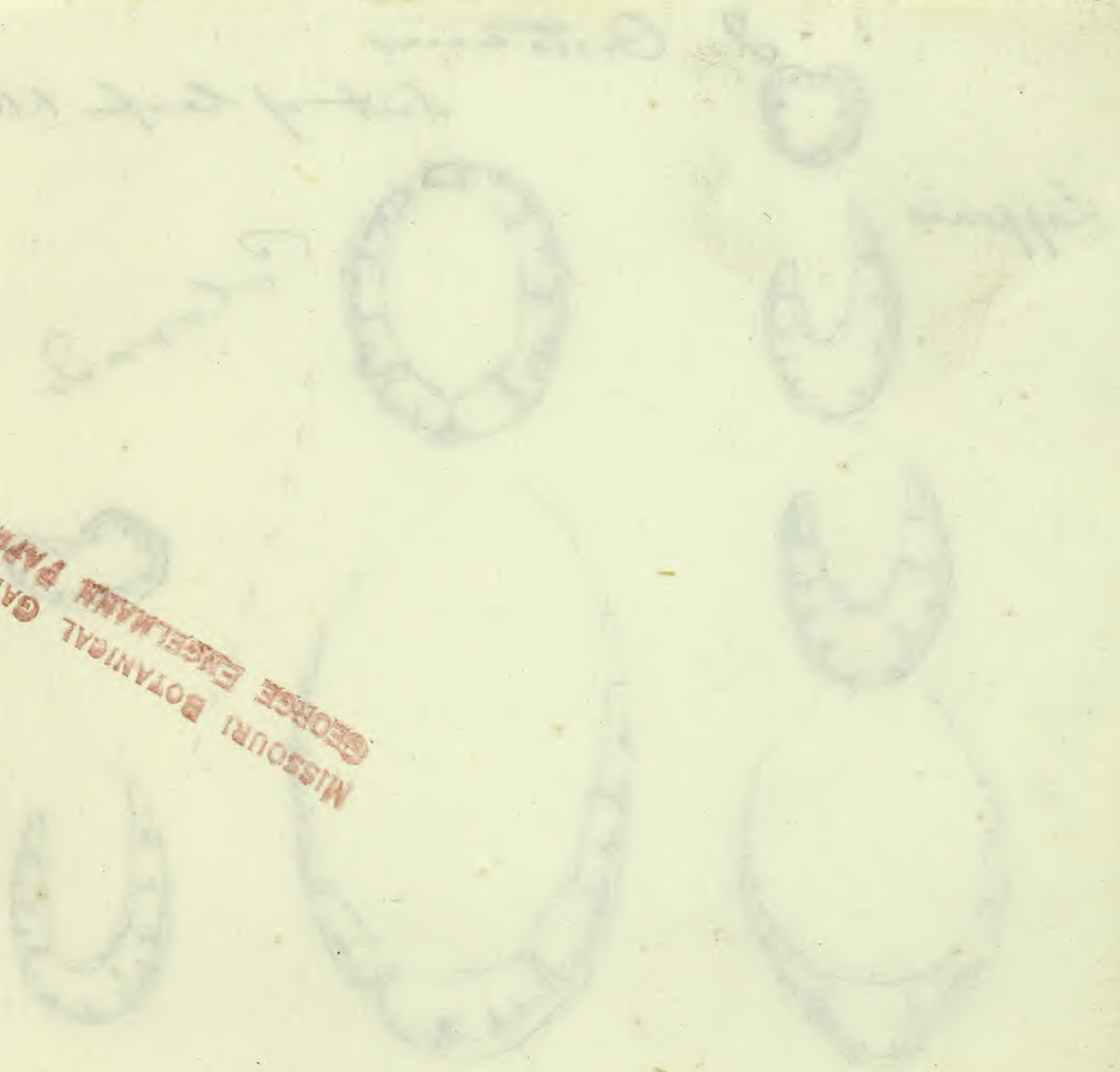
ALEX. LEITCH,  
APOTHECARY AND CHEMIST,

Marble Building, Cor. Fourth and Olive Streets,

ST. LOUIS, MO.

9163

MISSOURI BOTANICAL GARDEN  
GEORGE ENGELMANN PAPERS



0 1 2 3 4 5 6 7 8 9 10

cm

copyright reserved



MISSOURI  
BOTANICAL  
GARDEN



Koch Syn. H. gen. mentions in Pinus  
Castaneis and others the length & proportion of  
filaments and anthers.  
Kunth speaks of the shape of seeds — also others



0 1 2 3 4 5 6 7 8 9 10

cm

copyright reserved



MISSOURI  
BOTANICAL  
GARDEN





9164

~~MISSOURI BOTANICAL GARDEN~~  
~~GEORGE ENGELMANN PAPERS~~



0 1 2 3 4 5 6 7 8 9 10

cm

copyright reserved



MISSOURI  
BOTANICAL  
GARDEN



*J. castaneus*

Febr 20 1868

Norway

epidermis, a very  
loose sac

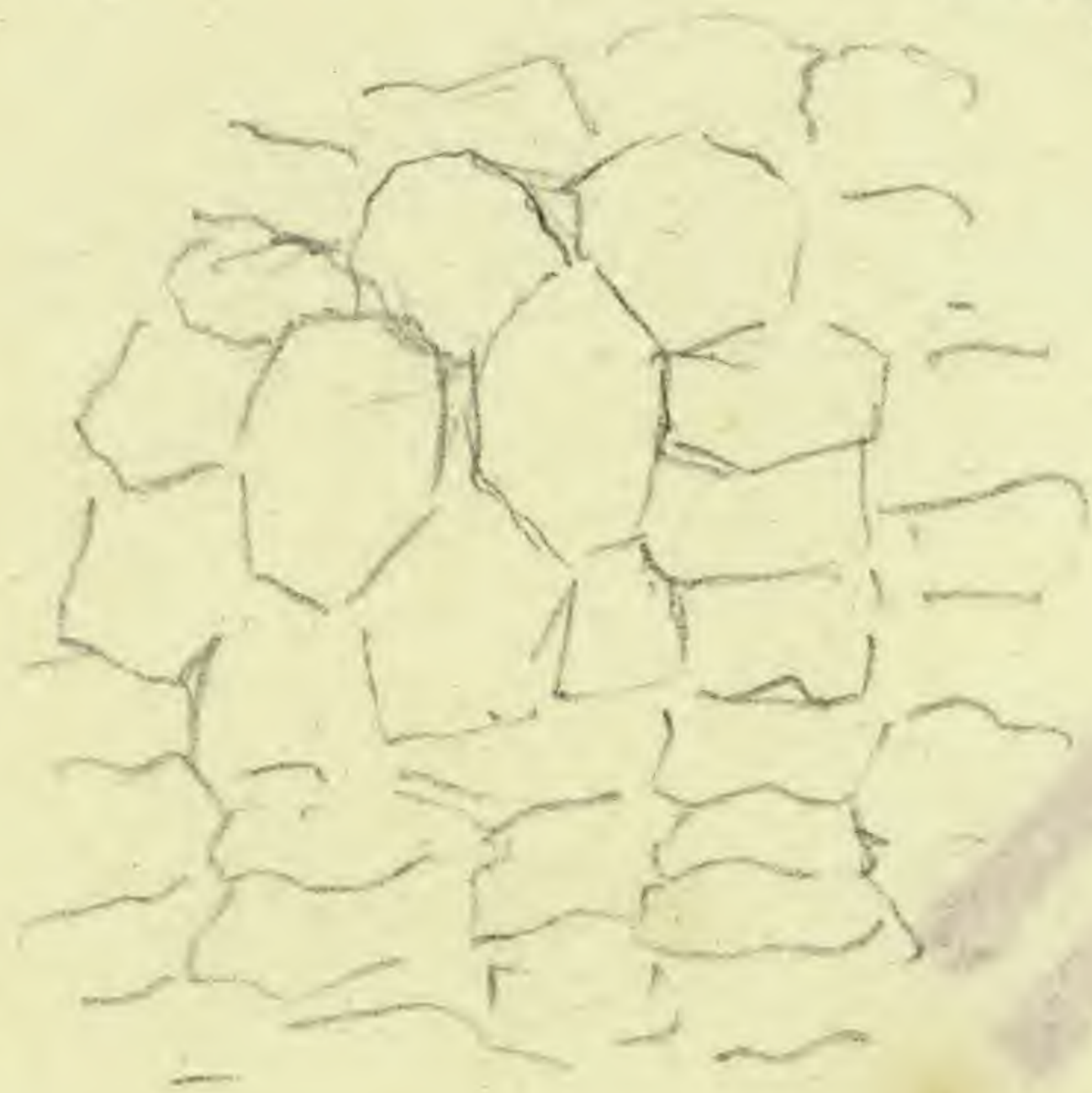
x 150

surface of nucleus

(not quite ripe?)

x 150

rugose-reticulate



0 1 2 3 4 5 6 7 8 9 10

cm

copyright reserved



MISSOURI  
BOTANICAL  
GARDEN



9165

**ALEX. LEITCH,**  
**APOTHECARY & PHARMACEUTIST,**

Marble Building Cor. Fourth & Olive Sts. St. Louis, Mo.

MISSOURI BOTANICAL GARDEN  
GEORGE ENGELMANN PAPERS



0 1 2 3 4 5 6 7 8 9 10

cm

copyright reserved



MISSOURI  
BOTANICAL  
GARDEN



Juncus castaneus

H. Philad

Gray

Engelm

Saskatchewan  
(mixed with longistylis)

Bourgeau

Carlton House to Hudson Bay

Drummond (Dr)

Colorado

358

Perry 358 358

560

Hall 560 560

Sin Eschscholtz

Chamisso (Ch)

Near Lake!

Richardson



0 1 2 3 4 5 6 7 8 9 10

cm

copyright reserved



MISSOURI  
BOTANICAL  
GARDEN





Alex. LEITCH

APOTHECARY & PHARMACEUTIST,

COR. 4TH & OLIVE STS., ST. LOUIS.

MISSOURI BOTANICAL GARDEN  
GEORGE ENGELMANN PAPERS

9166



0 1 2 3 4 5 6 7 8 9 10

cm

copyright reserved



MISSOURI  
BOTANICAL  
GARDEN



Oct 23 1865

*Juncus Lehmannii* E Meyer - HB. Hook  
*J. castaneus* B. pallidus Hook K.

Port II 192  
Cumberland House to Hudsons bay  
Drummond, August

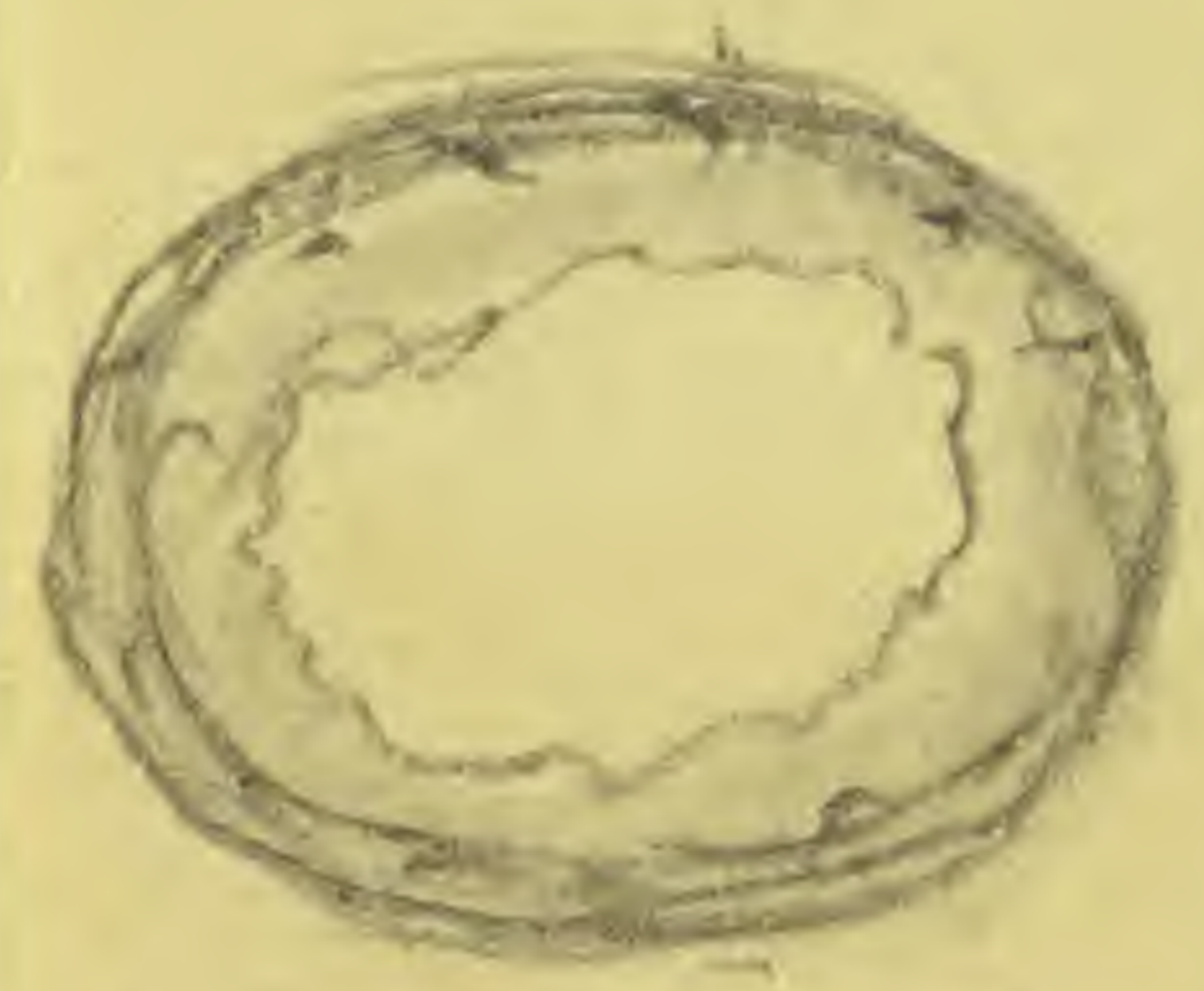
(ex Hb Gray)

12-15 inches high  
brary several  
distant heads  
few flowers.

seed capsule



capsule obtuse  
3 angulate



cut of stem  
nearly terete  
hollow



0 1 2 3 4 5 6 7 8 9 10  
cm

copyright reserved



MISSOURI  
BOTANICAL  
GARDEN



9167

**ALEX. LEITCH,**  
**APOTHECARY & PHARMACEUTIST,**

Marble Building Cor. Fourth & Olive Sts. St. Louis, Mo.

MISSOURI BOTANICAL GARDEN  
GEORGE ENGELMANN PAPERS



0 1 2 3 4 5 6 7 8 9 10

cm

copyright reserved



MISSOURI  
BOTANICAL  
GARDEN







December; the second with a mean electricity by the months of March, April, May and October; and the third with the lowest electricity by the months of June, July, August and September.

The aggregate monthly mean of

The first group in 1861 is 52.9—in 1862, 54.6
The second “ “ 33.5 “ “ 35.2
The third “ “ 14.1 “ “ 10.5

Thus in 1861 the third group prevailed, and in 1862 the first and second. But these differences are so well balanced throughout the year, that the mean of the whole year in 1861 and in 1862 is exactly the same, namely, 8.4. Such an identity in the yearly result, even to decimals, is of course not to be expected every year; but it seems to prove, at least, that the yearly mean of electricity is as constant as that of temperature, of relative humidity, and of atmospheric pressure.

The third table, showing the daily periodicity of atmospheric electricity, confirms the daily two maxima and two minima of electricity as an undeniable fact.

MISSOURI BOTANICAL GARDEN  
GEORGE ENGELMANN PAPERS

2915



0 1 2 3 4 5 6 7 8 9 10

cm

copyright reserved

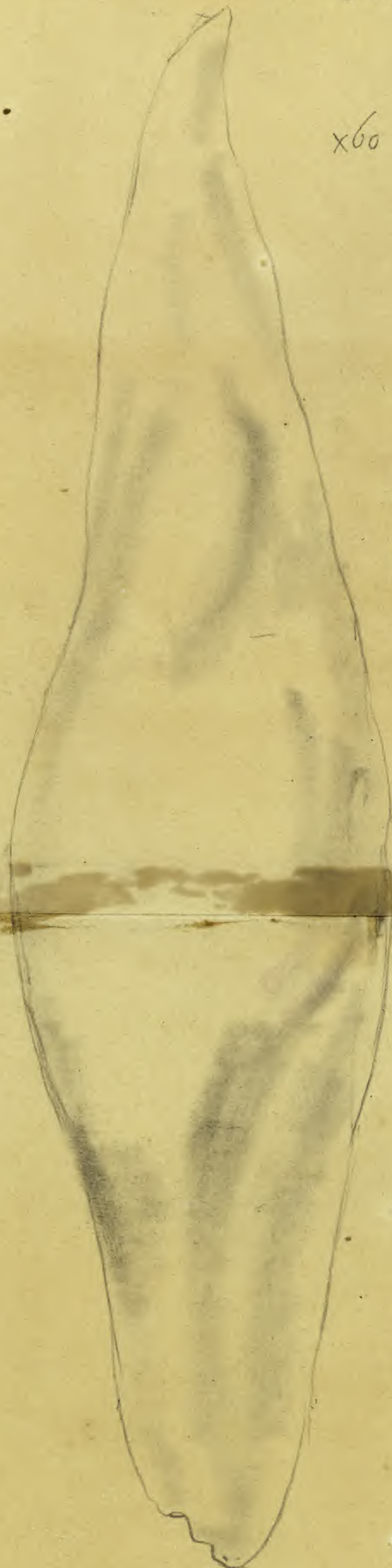


MISSOURI  
BOTANICAL  
GARDEN

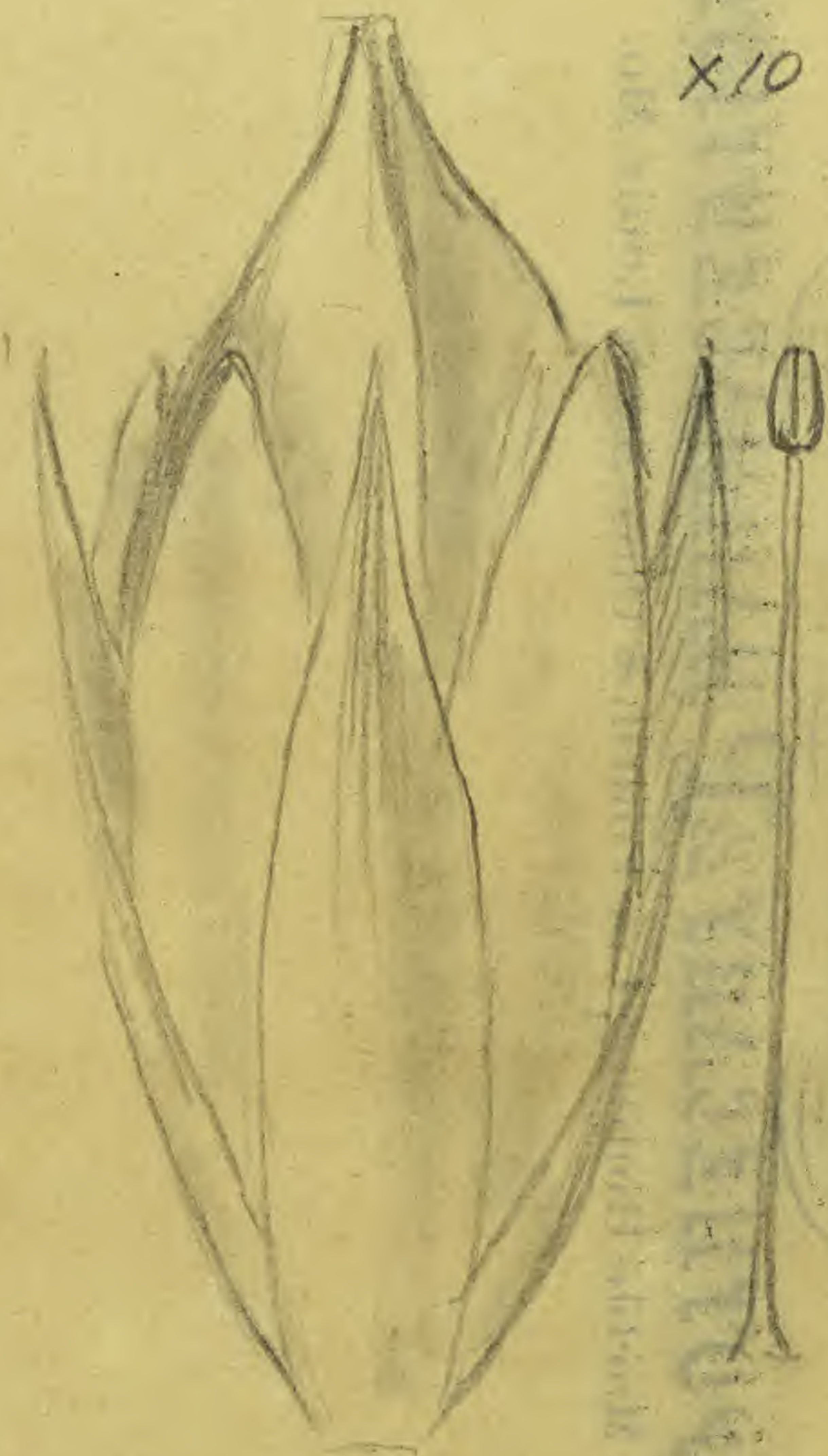


*Juncus stygius*  
Jeffers C. N.Y.

Aug 19 1865



x60



x10



too young

interior sepals less acute  
Seed stripped and sometimes a little longer  
of the testis than outer ones

irregular  
retic.



0 1 2 3 4 5 6 7 8 9 10  
cm copyright reserved



MISSOURI  
BOTANICAL  
GARDEN



9169

ALEX. LEITCH,

APOTHECARY & PHARMACEUTIST,

Marble Building Cor. Fourth & Olive Sts. St. Louis, Mo.

MISSOURI BOTANICAL GARDEN  
GEORGE ENGELMANN PAPERS



0 1 2 3 4 5 6 7 8 9 10

cm

copyright reserved



MISSOURI  
BOTANICAL  
GARDEN

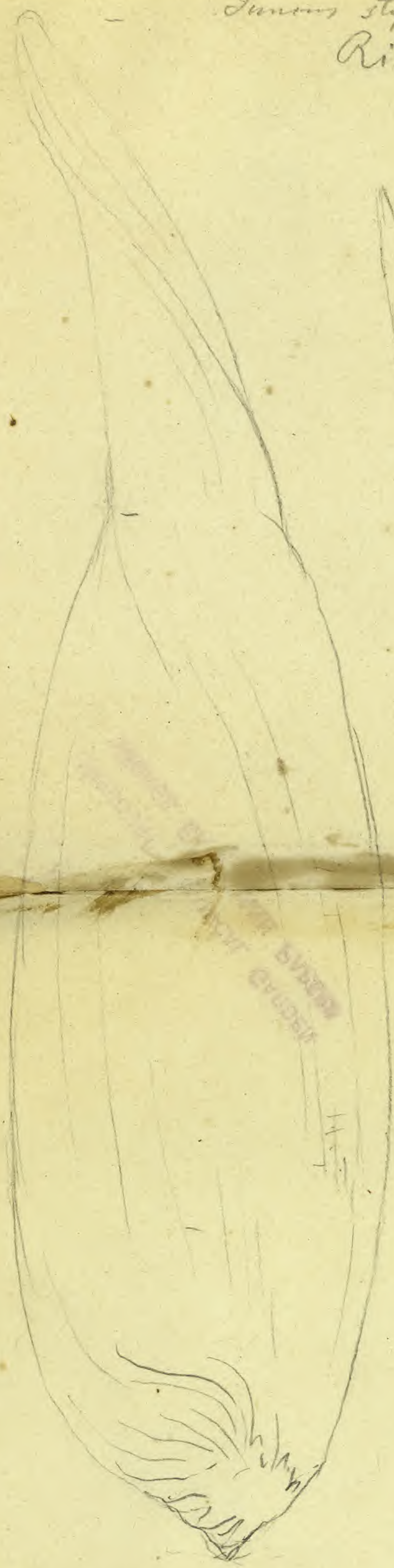


*Juncus stygius*

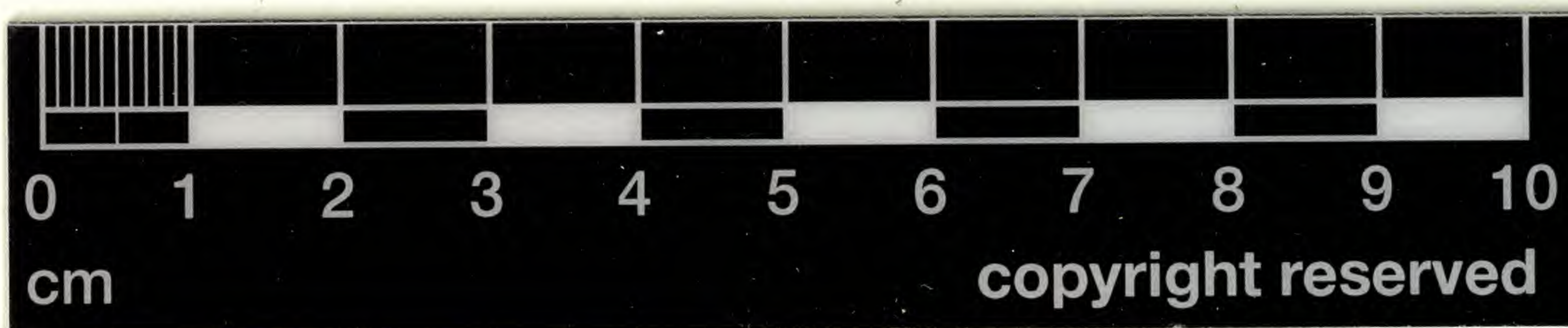
Nov 15 1855

Richibucto New Brunswick

James Fowler 1856



HERBARIUM OF THE UNIVERSITY OF CALIFORNIA  
JAMES FOWLER 1856  
VITEX FELIX



copyright reserved



ALEX. LEITCH,

APOTHECARY & PHARMACEUTIST

Marble Building Cor. Fourth & Olive Sts. St. Louis, Mo.

MISSOURI BOTANICAL GARDEN  
GEORGE ENGELMANN PAPERS

9170



0 1 2 3 4 5 6 7 8 9 10  
cm

copyright reserved



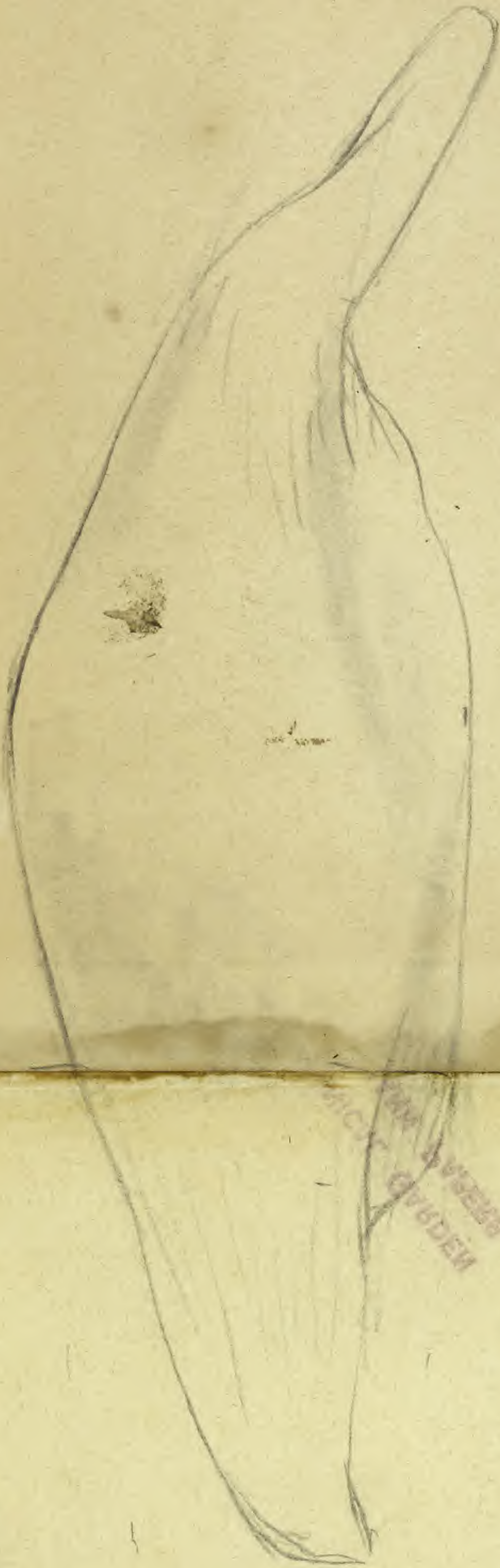
MISSOURI  
BOTANICAL  
GARDEN



*J. stygius*

Nov 21 1865

Christiania, Slegt - 146 Gray



sepals all obtuse  
inner sepals a little longer  
in other they are equal

placenta on lower part of ovule

base!

MISSOURI BOTANICAL GARDEN  
GEORGE ENGELMANN PAPERS



0 1 2 3 4 5 6 7 8 9 10

cm

copyright reserved



MISSOURI  
BOTANICAL  
GARDEN



Alex. Leitch

APOTHECARY & PHARMACEUTIST,

COR. 4TH & OLIVE STS., ST. LOUIS.



MISSOURI BOTANICAL GARDEN  
GEORGE ENGELMANN PAPERS

9171



0 1 2 3 4 5 6 7 8 9 10

cm

copyright reserved



MISSOURI  
BOTANICAL  
GARDEN



over

Buckner - letter, Jan 10 1867, Dist. Agents

D. stygia, europae

Americana

capsula sensim acuta

abrupte in acumen

breviter mucronata

elongatum protracta

1/4 exserta

1/4 exserta

sepala angustiora

sep. angustiora longe

~~longiora~~

acuminata

Petiora: lanceolata  
acuta

sem testis stramine

testis alba pubescens

densa, appendices

appendices longiores

breves

ALEX. LEITCH

APOTHECARY & PHARMACEUTIST,

COR. 4TH & OLIVE STS., ST. LOUIS.



0 1 2 3 4 5 6 7 8 9 10

cm

copyright reserved



MISSOURI  
BOTANICAL  
GARDEN



*Juncus stygius*

March 1866

Flowers and seeds - larger species smaller,  
capsule acute, long exsert.

in *Juncus stygius* longer, capsule acute,  
not so long exsert.

Sepals said to be acute by authors; I find  
them obtuse, especially the inner ones; outer ones  
often acute.

Sepals equal, or outer ones a little shorter  
or a little longer.

Slight short serrated, quite peculiar  
marked by *Juncus stygius*

MISSOURI BOTANICAL GARDEN  
GEORGE ENGELMANN PAPERS

1866

9172



0 1 2 3 4 5 6 7 8 9 10

cm

copyright reserved



MISSOURI  
BOTANICAL  
GARDEN



Tristygium

W. H. Chittenden

Gray

Engelmann

North Maine

Goodell

Jeff. Co. N.Y.

Gray  
Wood

Gray  
Vasey

Gray  
Vasey

New Brunswick

Fowler

Lake Superior

O. B. Wheeler



0 1 2 3 4 5 6 7 8 9 10

cm

copyright reserved



MISSOURI  
BOTANICAL  
GARDEN





ALEX. LEITCH

APOTHECARY & PHARMACEUTIST,

COR. 4TH & OLIVE STS., ST. LOUIS.

MISSOURI BOTANICAL GARDEN  
GEORGE ENGELMANN PAPERS

9173



0 1 2 3 4 5 6 7 8 9 10

cm

copyright reserved



MISSOURI  
BOTANICAL  
GARDEN



*J. stygius*

March 19 1866

sect of leaf & stem x10

x20

ought to be turned up



leaves



stem



leaf of

New York

specimen

fresher and

greener than

New Brunswick sp

New Brunswick

MISSOURI BOTANICAL GARDEN  
GEORGE ENGELMANN PAPERS  
PUBLISHED BY THE GARDEN



0 1 2 3 4 5 6 7 8 9 10

cm

copyright reserved



MISSOURI  
BOTANICAL  
GARDEN



ALEX. LEITCH,  
APOTHECARY AND CHEMIST,

Marble Building, Cor. Fourth and Olive Streets,

ST. LOUIS, MO.



MISSOURI BOTANICAL GARDEN  
GEORGE ENGELMANN PAPERS

9174



0 1 2 3 4 5 6 7 8 9 10

cm

copyright reserved



MISSOURI  
BOTANICAL  
GARDEN



*J. stygius*

Maine

Febr. 20 1868



epiderm  
(very lax)

x 150



surface of nucleus (not quite

x 150

irregularly rugose

reticulate

MISSOURI BOTANICAL GARDEN  
GEORGE ENGELMANN PAPERS  
VOLUME 11  
PART 1  
PLANTANETUM  
1868



0 1 2 3 4 5 6 7 8 9 10

cm

copyright reserved



MISSOURI  
BOTANICAL  
GARDEN



**ALEX. LEITCH,**  
**APOTHECARY & PHARMACEUTIST,**

Marble Building Cor. Fourth & Olive Sts. St. Louis, Mo.

MISSOURI BOTANICAL GARDEN  
GEORGE ENGELMANN PAPERS

9175



0 1 2 3 4 5 6 7 8 9 10

cm

copyright reserved



MISSOURI  
BOTANICAL  
GARDEN