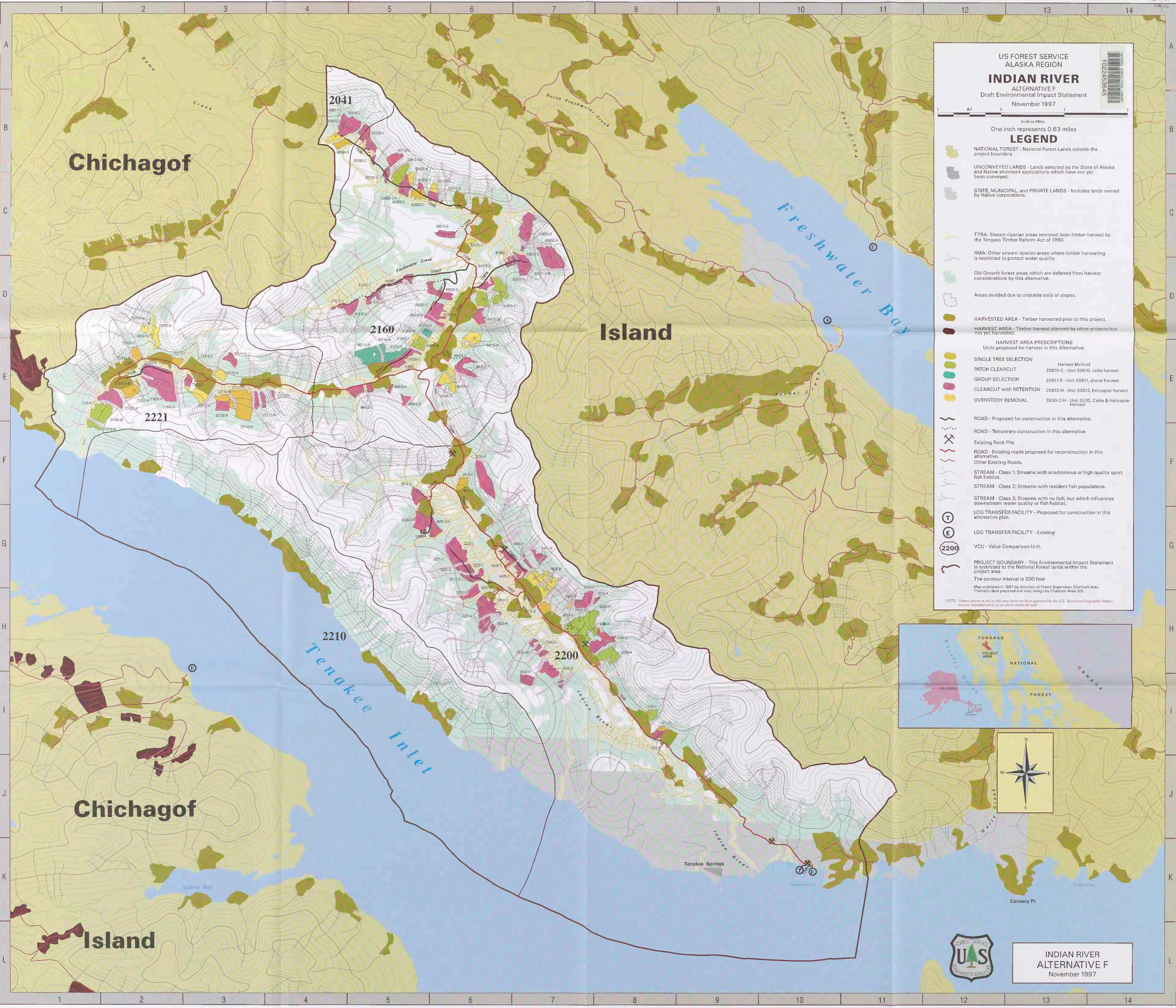


## **Historic, archived document**

Do not assume content reflects current scientific knowledge, policies, or practices.

0.5211  
1.023  
10.335  
11/97



US FOREST SERVICE  
ALASKA REGION  
**INDIAN RIVER**  
ALTERNATIVE F  
Draft Environmental Impact Statement  
November 1997

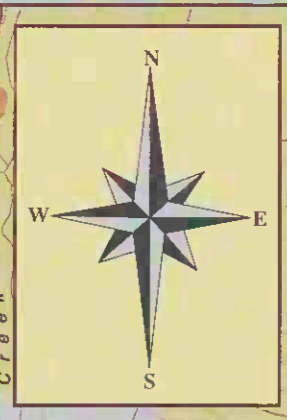
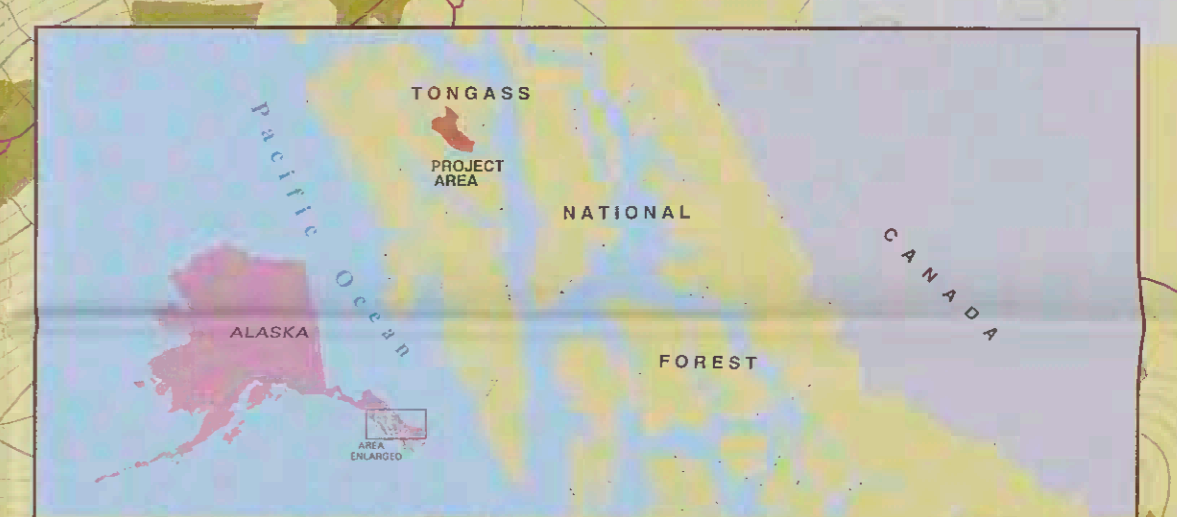


Scale in Miles  
One inch represents 0.63 miles

**LEGEND**

- NATIONAL FOREST - National Forest Lands outside the project boundary.
- UNCONVEYED LANDS - Lands selected by the State of Alaska and Native allotment applications which have not yet been conveyed.
- STATE, MUNICIPAL, AND PRIVATE LANDS - Includes lands owned by Native corporations.
- TTRA: Stream riparian areas removed from timber harvest by the Tongass Timber Reform Act of 1990.
- RMA: Other stream riparian areas where timber harvesting is restricted to protect water quality.
- Old Growth forest areas which are deferred from harvest considerations by this alternative.
- Areas avoided due to unstable soils or slopes.
- HARVESTED AREA - Timber harvested prior to this project.
- HARVEST AREA - Timber harvest planned by other projects but not yet harvested.
- HARVEST AREA PRESCRIPTIONS**  
Units proposed for harvest in this Alternative.
- SINGLE TREE SELECTION
- PATCH CLEARCUT
- GROUP SELECTION
- CLEARCUT with RETENTION
- OVERSTORY REMOVAL
- ROAD - Proposed for construction in this alternative.
- ROAD - Temporary construction in this alternative.
- Existing Rock Pits
- ROAD - Existing roads proposed for reconstruction in this alternative.
- Other Existing Roads.
- STREAM - Class 1; Streams with anomorous or high quality sport fish habitat.
- STREAM - Class 2; Streams with resident fish populations.
- STREAM - Class 3; Streams with no fish, but which influences downstream water quality or fish habitat.
- LOG TRANSFER FACILITY - Proposed for construction in this alternative plan.
- LOG TRANSFER FACILITY - Existing
- VCU - Value Comparison Unit.
- PROJECT BOUNDARY - This Environmental Impact Statement is restricted to the National Forest lands within the project area.  
The contour interval is 200 feet

NOTE: Names shown in red on this map have not been approved by the U.S. Board on Geographic Names and are intended solely as an aid to orient the user.



**INDIAN RIVER**  
ALTERNATIVE F  
November 1997