

- 534 -

FUJI SEISAKUSHO.....	204
FUJII SEISAKUSHO.....	135
FUJIKAWA TEKKOSHO.....	205
FUJIKOSHI KOZAI KOGYO.....	18
FUJITA TEKKOSHO K.K.....	341
FUKUDA TEKKOSHO.....	206
FUKUHARA SEIMITSU KIKAI KOGYO K.K.....	342
FUKUOKA KOKU BUHIN K.K.....	207
FUNABASHI KOSAKU KIKAI SEISAKUSHO.....	343
FUNIKOSHI KOZAI KOBYO.....	21
FUSHI TSUSHINKI SEIZO.....	22
GIFU KOSAKU KIKAI SEISAKUSHO K.K.....	208
HAMAI KIKAI KIGU SEISAKUSHO K.K.....	209
HAMANA KIKAI K.K.....	344
HAMANAKA SHOTEN TEKKOSHO.....	210
HANEDA SEIKI K.K.....	137
HARADA KIKAI SEISAKUSHO.....	211
HASEGAWA KIKAI SEISAKUSHO.....	345
HAYAKAWA KINZOKU KOGYO K.K.....	212
HAYASHI KAN.....	346
HAYASHI KIKAI SEISAKUSHO.....	213
HAYASHI SEISAKUSHO.....	214
HIBI TEKKOSHO.....	215
HINOKIYAMA SEIKI KOSAKUSHO.....	347
HIRANO SEIZO K.K.....	348
HIRAO TEKKOSHO.....	138

- 535 -

HITACHI KOSAKUKI.....	23
HITACHI MANSHU SEISAKUSHO.....	24
HITACHI SEIKI.....	25
HIYAMA SEIKI KOSAKUSHO.....	216
HOKOKU KIKAI KOGYO.....	29
HOKOKU TEKKO I.K.....	217
HOKUSHIN DENKI SEISAKUSHO K.K.....	139
HOMMA SEISAKUSHO.....	349
HONDA KIKAI SEISAKUSHO.....	218
HORI KIKAI SEISAKUSHO.....	219
ICHIYANAGI KIKAI TEKKOSHO.....	220
IDE SEISAKUSHO.....	221
IGUCHI TEKKOSHO K.K.....	222
IIDA KIKAI SEISAKUSHO K.K.....	223
IIJIMA TEKKOSHO K.K.....	224
IKEGAI CHAKKU SEIZO.....	140
IKEGAI TEKKOSHO K.K.....	31
IMAIZUMI SEIKI SEISAKUSHO.....	225
IMAZU SEIKI SEISAKUSHO.....	226
INOUE TEKKOSHO.....	227
INSATSU KOSHO K.K.....	141
INSATSU TEKKOSHO.....	350
ISEZAKI KOKU.....	228
ISHIBASHI KIKAI KOGU SEISAKUSHO.....	229
ISHIDA TEKKOSHO.....	351
ISHIHARA KYODAI SEISAKUSHO.....	230
ISHII TEKKOSHO.....	34

- 536 -

ISHIKAWA KOSAKU KIKAI SEISAKUSHO.....	352
ISHIKAWA SEISAKUSHO K.K.....	231
ITO SEISAKUSHO.....	232
IWABASHI TEKKOSHO.....	353
IWAMOTO KIKAI SEISAKUSHO.....	233
IWAMOTO TEKKOSHO K.K.....	234
KAINAN SEISAKUSHO.....	235
KAMEZAWA SEMBAN KOJO.....	354
KANEKO TEKKOSHO.....	236
KARATSU TEKKOSHO K.K.....	142
KATAE SEISAKUSHO.....	237
KATO TEKKOSHO.....	238
KATSURA SEISAKUSHO.....	144
KAWA SEISAKUSHO.....	355
KAWAKAMI KIKAI SEISAKUSHO.....	239
KAWANISHI KOKUKI K.K.....	36
KAWASHIMA SEISAKU.....	240
KAWAZOE TEKKOSHO.....	356
KIKUGAWA TEKKOSHO.....	241
KIMURA INTETSU KIKAI KOGYOSHO.....	357
KIMURA KIKAI SEISAKUSHO.....	242
KINOSHITA TEKKOSHO.....	37
KIRYU KIKAI K.K.....	146
KISHA SEIZO KAISHA.....	38
KITA KAMI KIKAI SEISAKUSHO.....	358
KITAJIMA SEISAKUSHO.....	243
KITAKAWA TEKKO.....	244
KOA KIKAI KOGYO.....	147

- 537 -

KOA KINZOKU KOGYO K.K.....	245
KOA SEIKI SEISAKUSHO.....	359
KOBE SEIKOSHO K.K.....	40
KOHAN KOGYO K.K.....	41
KOHARA TEKKOSHO.....	360
KOJIMA KIKAI SEISAKUSHO K.K.....	246
KOJIMA TEKKOSHO K.K.....	149
KOKU YAKIN KIGU KAISHA.....	247
KOKUBUN TEKKOSHO.....	361
KOKUEI SEIKI KOGYOSHO.....	248
KOKUSAN KIKAI SEISAKUSHO.....	249
KOKUSAN SEIKI.....	44
KOKUSAN SEIMITSU KIKAI K.K.....	150
KOMATSU SEISAKUSHO.....	42
KONDO KOKI SEISAKUSHO.....	250
KONDO TEKKOSHO K.K.....	251
KOTOBUKI JUKOGYO.....	45
KOYANAGI KOSAKU KIKAI SEISAKUSHO.....	252
KOYO SEIKO.....	47
KUBOTA TEKKOSHO.....	48
KUNIFUJI TEKKOSHO.....	151
KUNITOMOTTEKKOSHO.....	362
KURAIISHI TEKKOSHO.....	253
KUWANANO KEIKI SEISAKUSHO.....	254
KYOKUTO SEIMITSU KOSAKUSHO K.K.....	255
KYOTO KOSAKU KIKAI K.K.....	256
KYOWA KEMMAKI SEISAKUSHO.....	257
KYOWA SEISAKUSHO.....	363
KYUSHU HEIKI K.K.....	364
KYUSHU TEKKOSHO K.K.....	258

- 538 -

KYUSHU TOKUSHUKO K.K.....	152
MABUCHI TEKKOSHO K.K.....	259
MACHIDA TEKKOSHO K.K.....	260
MAEDA KOSAKUSHO.....	261
MAKISEI KIKAI SEISAKUSHO.....	365
MANSHU CHUBUTSU K.K.....	153
MANSHU IMONO.....	154
MANSHU KOKI K.K.....	155
MANSHU KOSAKU KIKAI.....	49
MANSHU KOSAKUSHO K.K.....	262
MANSHU KOSHO.....	51
MANSHU RISSEI DENKI SEISAKUSHO K.K.....	263
MANSHU SANGYO K.K.....	264
MANSHU SEISA KOGYO.....	265
MARUKUNI TEKKOSHO K.K.....	366
MARUMI SEIKI SEISAKUSHO.....	266
MARUUM TEKKOSHO.....	367
MASUDA KIKAI SEISAKUSHO.K.K.....	368
MATSUMOTO CHUZO TEKKOSHO K.K.....	156
MATSUMOTO KIKAI KOGEISHA.....	369
MATSUOKA SEISAKUSHO.....	267
MATSUSHITA KINZOKU.....	157
MATSUSHITA TEKKOSHO K.K.....	268
MIISHI SEI KEMMAKI SEISAKUSHO.....	370
MIKUNI KIKAI KOGYO.....	371
MIKURO SEISAKUSHO.....	372

- 539 -

MITA TEKKOSHO.....	269
MITSUBISHI DENKI.....	52
MITSUBISHI JUKOGYO.....	53
MITSUBISHI KOSAKU KIKAI.....	54
MITSUMI KOSAKUKI K.K.....	56
MORITA KIKAI SEISAKUSHO.....	373
MORIYASU TORIRU SEISAKUSHO.....	374
NAIGAI SEIKI SEISAKUSHO K.K.....	375
NAKAGAWA KIKAI K.K.....	376
NAKAJIMA HIKOKI K.K.....	57
NAKAJIMA KIKAI K.K.....	158
NAKAJIMA SEIKI K.K.....	377
NAKAJIMA ZOKI.....	270
NAKAMURA TEKKOSHO.....	271
NAKANE SEISAKUSHO.....	272
NAKASATO SEIKI SEISAKUSHO.....	273
NAKAZAWA TEKKOSHO.....	274
NANIWA TEKKOSHO K.K.....	378
NICHISHIN KIKAI SEISAKUSHO.....	379
NIIGATA TEKKOSHO.....	58
NIPPON DEIZERU KOGYO.....	61
NIPPON Dempa KIKAI.....	159
NIPPON DENKI YAKIN KOGYO.....	63
NIPPON JIDOSHA KOGYO K.K.....	161
NIPPON KEMMA K.K.....	380
NIPPON KEMMAKI KOSAKUSHO.....	381
NIPPON KIKAI SEISAKUSHO K.K.....	275
NIPPON KOSAKU SEIKI K.K.....	382

- 540 -

NIPPON PISTON SEIKI.....	383
NIPPON POMPU SEIZO GOSHI K.K.....	276
NIPPON RIKA KOGYO.....	65
NIPPON SEIKI K.K.....	163
NIPPON SEIKOSHO.....	384
NIPPON SEIMITSU KOGYO K.K.....	385
NIPPON SODA K.K.....	66
NIPPON TAIPURAITA.....	67
NIPPON TOKUSHU KO.....	69
NISHIKAWA TEKKOSHO K.K.....	164
NISHIMORI TEKKOJO.....	71
NISHIMURA KIKAI KOSAKUSHO.....	277
NISHO SEIKI.....	386
NISSAN KINZOKU KOGYOSHO.....	387
NITTO KEMMAKI SEISAKU K.K.....	388
NITTO KIKAI SEISAKUSHO.....	389
NOGI TEKKOSHO.....	278
NOMURA SEISAKUSHO K.K.....	165
OBARA TEKKOSHO.....	166
OKAMOTO KOGYO K.K.....	72
OKAMOTO KOSAKU KIKAI.....	279
OKAZAKI KIKAI SEISAKUSHO.....	281
OKUMA TEKKOSHO K.K.....	73
OSAKA DENKI.....	76
OSAKA KIKAI SEISAKUSHO.....	77
OSAKA KIKO.....	80

- 541 -

OSAKA KINZOKU NETSUREN K.K.....	282
OSAKA SEIKI.....	390
OSAKA SEISHA ZOKI K.K.....	82
OSAKA WAKAYAMA TEKKOSHO.....	85
OSHIMA DENKI KOGYO K.K.....	283
OSHIMA SEISAKUSHO K.K.....	284
OTA FURAI SUBAN SEISAKUSHO.....	391
OTA TEKKOSHO.....	167
OTAKU PRESS MFG. CO.....	392
OTSUKA SEISAKUSHO K.K.....	168
OYANO TEKKOSHO.....	393
RIKAGAKU KOGYO.....	86
RIKEN DENJIKI K.K.....	169
RIKEN JISSHAKU SEMBAN MIYANOUCI SEISAKUSHO.....	285
RIKEN JUKOGYO K.K.....	88
RIKEN KEIGOKIN.....	286
RIKEN KOGYO.....	89
RIKEN KOSAKU KIKAI.....	90
RIKEN PISTON RINGU K.K.....	394
RIKEN SEIKI.....	170
ROKU ROKU SHOTEN K.K.....	395
ROKUGO SEISAKUSHO.....	287
SAKAGUCHI KEN TEKKOSHO.....	288
SAKAGUCHI KIKAI SEISAKUSHO.....	171
SANKO SEIKI KOGYO K.K.....	289
SANSEI SEISAKUSHO K.K.....	290
SANSHO SEISAKUSHO.....	291
SAWAFUJI DENKI KOGYOSHO.....	172

- 542 -

SEIKENKI SEISAKUSHO K.K.....	292
SEIKI SEIZO K.K.....	293
SEIKI TANKO K.K.....	294
SEIMITSU KEMMAKI SEIZO K.K.....	295
SEKISAN SEISAKUSHO K.K.....	173
SHIBA SEISAKUSHO.....	296
SHIBATA TEKKO.....	297
SHIBAURA KOSAKU KIKAI.....	92
SHIBAURA SEISAKUSHO.....	94
SHIKISHIMA SEISAKUSHO.....	396
SHIMADA SEISAKUSHO K.K.....	298
SHIMAGASU TEKKOSHO.....	397
SHIMIZU KIKAI SEISAKUSHO.....	398
SHIMIZU SEIMITSU KIKAI KOGU SEISAKUSHO.....	299
SHINAGAWA SEIKI.....	95
SHINATSU SEISAKUSHO.....	97
SHINDO SEISAKUSHO.....	399
SHINOHARA KIKAI SEISAKUSHO.....	98
SHINOHARA KOSAKUSHO K.K.....	174
SHOUN KOSAKUSHO.....	175
SHOWA CHUZO.....	300
SHOWA KIKAI KOSAKUSHO K.K.....	301
SHOWA KIKOSHA K.K.....	302
SHOWA KINZOKU KOGYO K.K.....	400
SHOWA KOKI K.K.....	303
SHOWA SEIKI SEISAKUSHO.....	304
SHOWA SEIMITSU KIKAI K.K.....	305
SONOIKE SEISAKUSHO.....	176
SUMITOMO DENKI KOGYO K.K.....	99

- 543 -

SUMITOMO KINZOKU KOGYO K.K.....	100
SUMIYOSHI CHUKOSHO K.K.....	306
SUZUKI SEISAKUSHO.....	401
SUZUKI TEKKOSHO.....	307
TAIHEIYO KOGYO K.K.....	308
TAIMEI KAISHA.....	402
TAIYO SEISAKUSHO.....	309
TAIYOKUKI KEIKI SEIZO K.K.....	403
TAKAHASHI TEKKOSHO.....	404
TAKAOKA SEISAKUSHO.....	177
TAKEDA KIKAI SEISAKUSHO.....	405
TAKEDA TEKKOSHO K.K.....	178
TAKISAWA TEKKOSHO.....	310
TANABE TEKKOSHO.....	311
TANAKA KEIKI SEISAKUSHO.....	179
TANAKA KIKAI SEISAKUSHO.....	101
TANAKA KOKU KIKI SEISAKUSHO.....	180
TEIKOKU KOKI K.K.....	312
TEIKOKU SEIMITSU KOGYO.....	181
TERAJIMA KIKAI SEISAKUSHO K.K.....	406
TOA KIKO K.K.....	313
TOA KINZOKU KOGYO K.K.....	103
TOA SEIKI SEISAKUSHO K.K.....	314
TOA TEKKOSHO K.K.....	183
TOGOE SEIKI SEISAKUSHO K.K.....	315
TOHO SEIKI SEISAKUSHO.....	407
TOHO SEIMITSU KOGYO K.K.....	316
TOKYO GASU DENKI K.K.....	105

- 544 -

TOKYO KEIKI SEISAKUSHO.....	184
TOKYO KIKAI SEISAKUSHO K.K.....	106
TOKYO KIKI KOGYO K.K.....	109
TOKYO KOGYO K.K.....	408
TOKYO KOKU KEIKI K.K.....	185
TOKYO KOSAKU KIKAI SEIZO K.K.....	317
TOKYO SEIKI K.K.....	186
TOKYO SEIKI SEISAKUSHO K.K.....	318
TOKYO SEIKOKI K.K.....	319
TOKYO SEIMITSU KOGYO.....	409
TOKYO SUTENRESU KAKOKI SEISAKUSHO K.K.....	320
TOKYO TARETO KIKAI SEISAKUSHO.....	410
TOMOTE KOSAKU KIKAI SEIZO K.K.....	411
TOYO JUKOGYO.....	187
TOYO KIKAI K.K.....	111
TOYO KIKAI KOGU.....	412
TOYO KIKAI KOGYO.....	321
TOYO KINZOKU K.K.....	322
TOYO KOGYO KAISHA.....	112
TOYO KOHAN.....	113
TOYO SEIKI K.K.....	114
TOYOAKI SEIKI K.K.....	323
TOYOBASHI SEIKI K.K.....	413
TOYODA BOSHOKU.....	116
TOYODA JIDOSHA K.K.....	414
TOYODA KOKI.....	117
TOYODA SHIKI.....	118

- 545 -

TOYODA SHIKI ORIHATA.....	119
TOYOKUNI KIKAI KOGYO K.K.....	120
TOYOWA JUKOGYO.....	121
TOYOWA KOSAKUKI K.K.....	122
TSUBOTA TEKKOSHO.....	324
TSUCHIDA SEIKISHO.....	325
TSUCHIYA KOKI SEISAKUSHO.....	415
TSUDA KOMA KOGYO.....	189
TSUDA SEISAKUSHO.....	190
TSUGAMI ATAKA SEISAKUSHO.....	123
TSUNODA KEMMAKI SEISAKUSHO.....	416
TSUZUKI TEKKOSHO.....	326
UCHIDA KOGYO K.K.....	327
UMEZU KOJO K.K.....	328
UROKO SEISAKUSHO K.K.....	417
UTSU TEKKOSHO.....	329
WASHINO SEIKI.....	191
YAMAGUCHI KIKAI SEISAKUSHO.....	418
YAMAGUCHI TEKKOSHO.....	419
YAMASAKI KOSAKU KIKAI SEISAKUSHO.....	420
YAMATO SEIKI K.K.....	330
YAMATO TEKKOSHO.....	421
YODOGAWA KIKAI SEISAKUSHO.....	331
YONOGAWA KIKAI SEISAKUSHO.....	422
YOKOHAMA KOKUKI K.K.....	423
YOKOHAMA SENKYO.....	424
YOKOTA KOSHOSHA K.K.....	332
YOSHIDA TEKKOSHO.....	333

YOSHIKANE TEKKOSHO..... 334
YOSHIKAWA KIKAI SEISAKUSHO..... 425
YOSHIKAWA SEISAKUSHO..... 427
YOSHIKE KIKAI SEISAKUSHO..... 335
YOSHITA SEISHICHI SHOTEN & SEIZO K.K..... 336

THE SOCIETY OF THE PLASTICS INDUSTRY
INCORPORATED

295 Madison Avenue, New York 17, N.Y.

LEXINGTON 2-6057

Mac Co *Wass* *JK*

June 28, 1946

State Department
Washington
D. C.

894.65/6-2846

Gentlemen:

We have been interested in obtaining for our members information on the Japanese Plastics Industry. The War Department advised us that they have on hand several documents on the Japanese Plastics Industry. These reports are written in Japanese. The War Department advises they will make these available to us for interpreting. We would like to know if you will give us the names of such people in Washington who are competent to translate Japanese and who would be available on a commercial basis.

Thanking you for supplying such information, we are

Very truly yours,

Wm. T. Cruise
Wm. T. Cruise
Executive Vice President

RECEIVED
DEPARTMENT OF STATE

WTC:lp
JUL 1 1946

RECORDS BRANCH

FILED
JUL 12 1946

DOR - ITP Unit

Anal *EDH*
Rev *JK*
Dist

DIVISION OF JAPANESE AND KOREAN
ECONOMIC AFFAIRS
DEPARTMENT OF STATE
answered 7/9/46
JUL 3 1946

894.65/6-2846

JUL 10 1946

In reply refer to
JK

My dear Mr. Cruse:

Your letter of June 28, 1946 requesting the names of Japanese translators who would be able to translate War Department documents concerning the Japanese plastics industry has been referred to me.

We are not able to give you the names of the translators you desire, but suggest that you get in touch with language schools and employment agencies in New York where Japanese linguists may be available.

It has occurred to me that there are English-language publications touching on the subject of the Japanese plastics industry, and that you might find them at the New York Public Library. I can suggest as a start: The Japan Times Weekly for August 3, 1939; The Japan Yearbook, 1940, 1941, 1942-43; The Japan Advertiser, Annual Review 1938-39; and "Plastics," by T. Okada, in Diamond Sangyo Zensho, No. 18, 1939, which is I think written in English.

Sincerely yours,

DCR - ITP Unit
Ans. *EJA*
Rev. *JK*
Dist.

Edwin M. Martin
Chief
Division of Japanese and Korean
Economic Affairs

Mr. W. T. Cruse,
The Society of the Plastics Industry,
295 Madison Avenue,
New York 17, New York.

VSM
JK:WSMccornick:bc
7/9/46

JUL 10 1946



894.65/6-2846

894.65/6-2846

1092



CUSHMAN MOTOR SCOOTER SALES CO.

BOX 31
LINCOLN, NEBRASKA

May 27, 1947

ESP
JK
to
Hodge
with your
copy

General George C. Marshall
Secretary of State
Washington, D. C.

Dear General Marshall:

The attached has come to our attention. I am forwarding it just as we received it, in the belief that it will be of interest to your department.

CR
894.60

ED
STATE
4

It is our understanding that certain industries are to be considered as "taboo" for Japan. Certainly it is but one step from building air-cooled engines for Motor Scooters to building air-cooled engines for airplanes.

On the other hand, perhaps these Scooters are being powered with engines purchased from the United States, Great Britain or some other country.

In any event, we felt that you might, through your department, wish to look into this situation.

Very respectfully,

CUSHMAN MOTOR SCOOTER SALES CO.

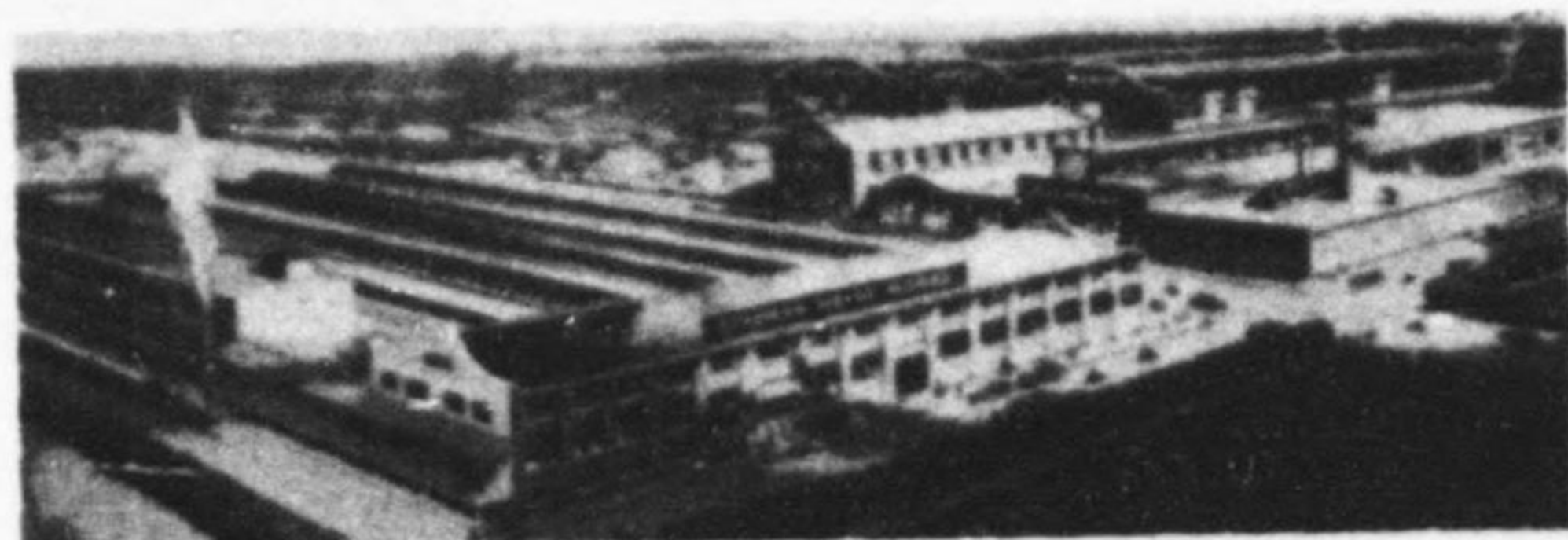
D. B. Sayre

D. B. Sayre
Director of Sales

DBS:lv
att.

DOB FTP Unit

Handwritten initials and marks



THE HOME OF THE CUSHMAN MOTOR SCOOTER

894.65/5-2747

CS/A

894.65/5-2747

1092

JUN 9 1947

In reply refer to
JK

894.65

Cushman Motor Scooter Sales Co.,
Box 31,
Lincoln, Nebraska.

Gentlemen:

Thank you for your letter of May 27 regarding the manufacture and sale of Motor Scooters in Japan.

The future level of industrial activity and the types of manufacturing which will be permitted in Japan are under Inter-Allied consideration at this time. You may be assured that the interests of this country, and the other nations involved in the war with Japan, in preventing her re-armament will be protected.

Your interest and concern in this problem is appreciated.

Very truly yours,

For the Secretary of State:

Charles L. Hodge
Acting Associate Chief
Japanese and Korean Economic Affairs Division

DOE - ITP Unit
AHL
Rev
Dist
JUN 9 1947
Handwritten initials and marks

JHB
JK:HLBaker:bg

6/6/47

CR
DC/R



894.65/5-2747

CSKA

894.65/5-2747

DIVISION OF
COMMUNICATIONS AND RECORDS
TELEGRAPH BRANCH

DEPARTMENT OF STATE
INCOMING TELEGRAM

ACTION COPY

7

PLAIN

A

Action: DCL —
Info:
FE
OCD
CIA
ITP
DCR

Control 7029

Rec'd January 23, 1948
11:59 p.m.

*file
1/24/48
com
7R*

FROM: Tokyo
TO : Secretary of State
NO : 14, January 23

Reference Department commercial telegram, January 11,
relaying Commerce request regarding bicycle chains.

*xR
600,949*

Entire production bicycle chain available for export
through November 1948 already committed. Firm orders
totalling 280,000 chains received to date: 30,000 India;
200,000 Singapore; 50,000 US (Deak and Company, New
York). Estimated production this item for export
10,000 units per month for January and February,
30,000 units per month thereafter. Estimate subject
availability coal and raw materials.

Specifications bicycle chain for export, one-half
inch by one-eighth inch by 114 links. Current US
dollar price f.o.b., Japan 85 cents per unit.

SEBALD

WMB:JM

894.65/1-2348

JAN 27 1948

FILED

HH

PLAIN

PERMANENT RECORD COPY: THIS COPY MUST BE RETURNED TO DC/R CENTRAL FILES WITH
NOTATION OF ACTION TAKEN.