

F 129

. T<sub>8</sub> V<sub>6</sub>



F 129  
.T8 V6  
Copy 1

Views of  
Troy AND  
Cohoes

Views of  
Troy and  
Colleges

Views of  
Troy and Cohoes



PUBLISHED BY

*L. H. Nelson Company, Portland, Maine*



TROY POST OFFICE—FOURTH STREET AND BROADWAY.

United States Government Building corner Broadway and Fourth Street, includes the Post Office and rooms for the United States Court. It was completed May, 1864, at a cost of about \$500,000. It is built of granite, and the sales of stamps and cards annually is about \$105,000. The Troy Hospital, seen on the extreme right in the distance, erected in 1868, is a large four story brick building and well equipped wards. The hospital is in charge of Sisters of Charity.



CITY HALL—TROY

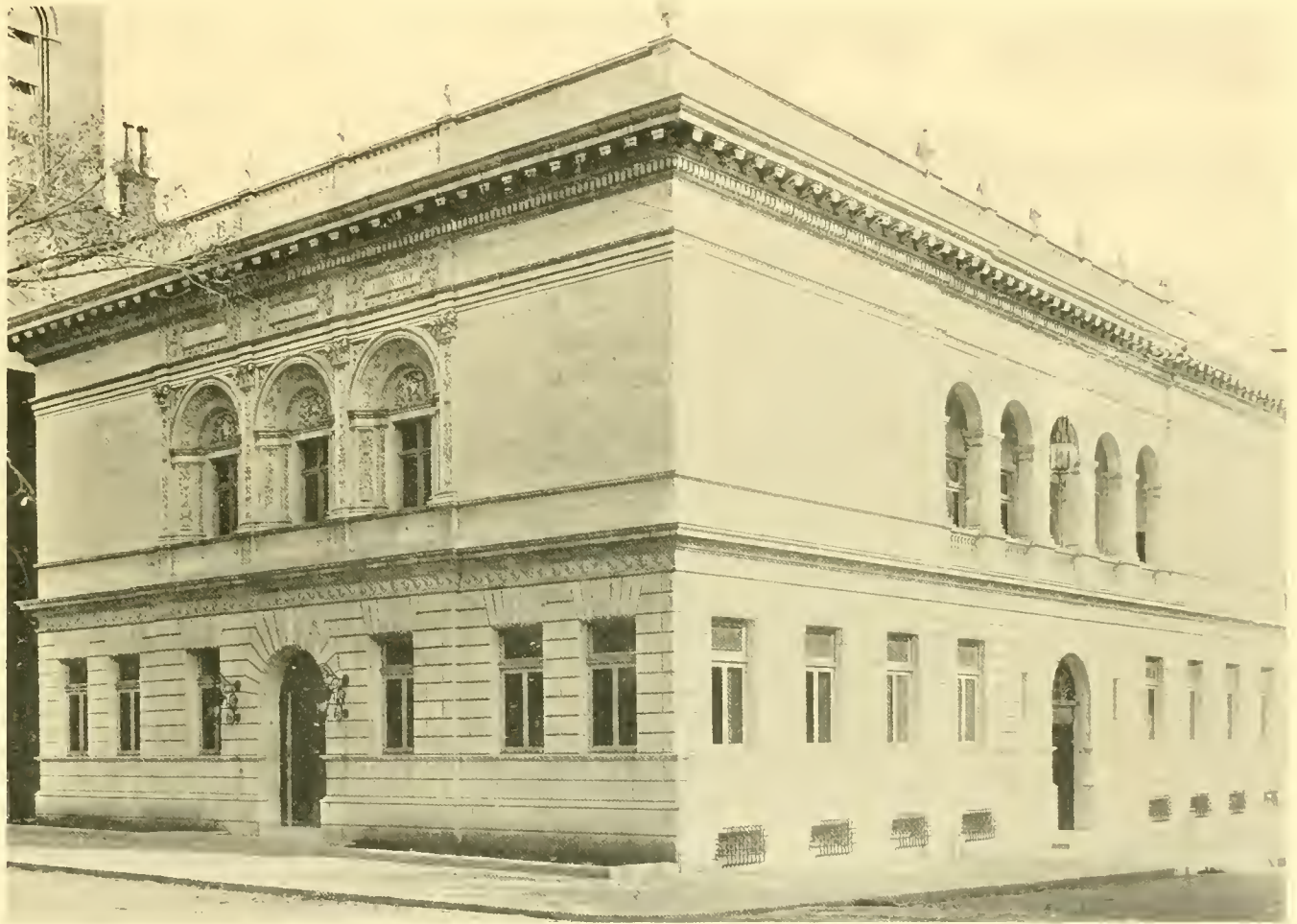
S. E. corner of Third and State Streets, is built of Philadelphia Pressed Brick with sand stone and iron trimmings; was completed and occupied in October, 1876. It contains offices of the Mayor and other city officials, Common Council rooms and a large audience chamber. Total cost of land and building \$300,000. First Baptist Church is seen to the right.



COPYRIGHT, J. H. LLOYD.      RENSSELAER COUNTY COURT HOUSE—TROY.    SECOND AND CONGRESS STREETS

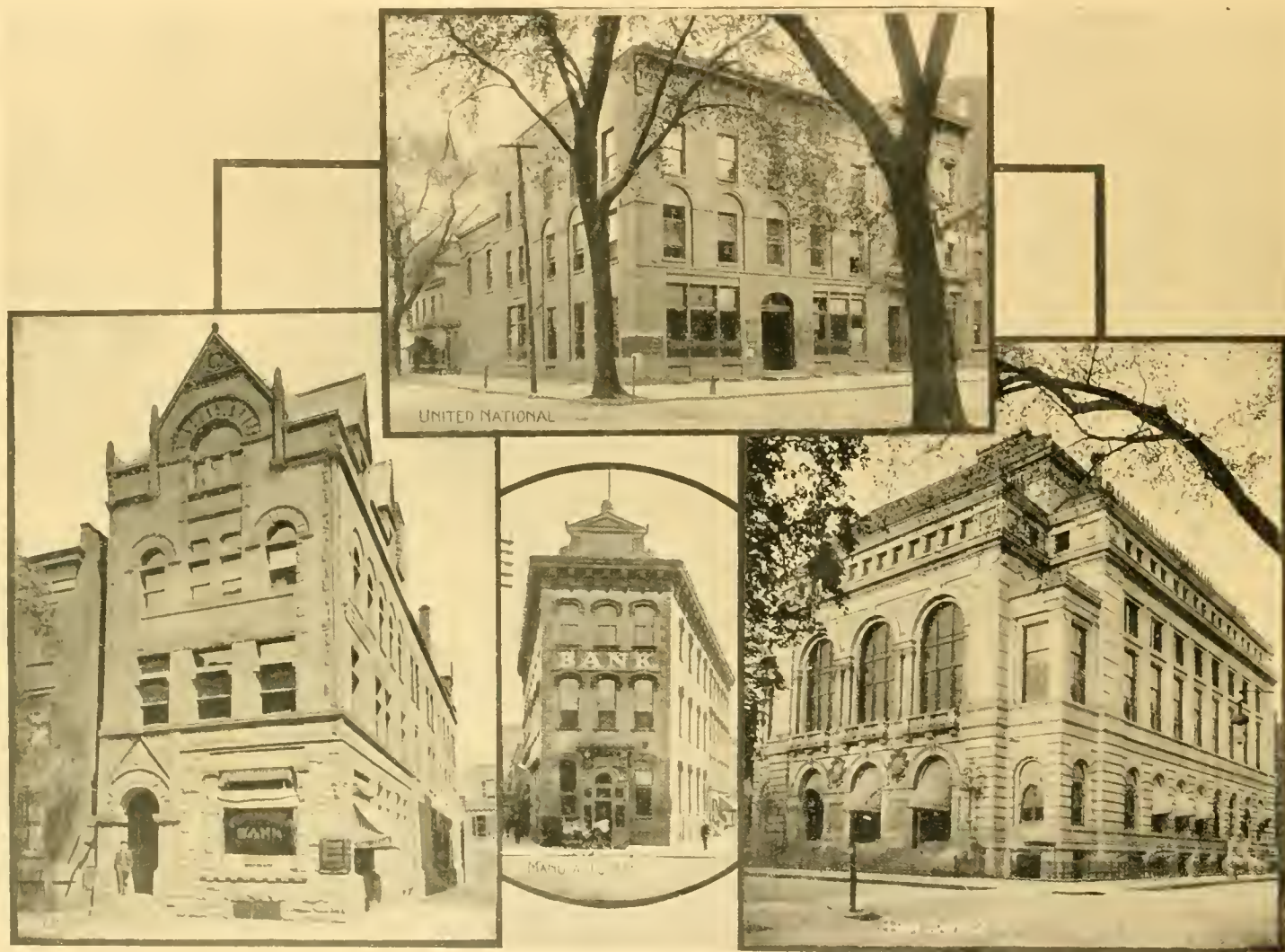
Rensselaer County Court House, S. E. corner Congress and Second Streets facing on Seminary Park, is a granite fire-proof building which cost \$350,000, contains County offices, Supreme Court room with interesting portraits and rooms of the County Board of Supervisors. Built 1898. The site was a gift of Jacob D. Van der Heyden, March, 22, 1793. A whipping post and stocks were placed in the yard, about the year 1791. Occasionally criminals were there publicly whipped by the sheriff or his deputy, the offenders severally receiving a number of lashes, less than forty. Those held in the stocks were often objects of ridicule, and were not unfrequently pelted with offensive missiles by the village children.





HART MEMORIAL LIBRARY  
SECOND STREET NEAR FERRY STREET

Troy Young Men's Association Library. There is not a more beautiful specimen of architecture in the country than the "Hart Public Library," which stands on the corner of Second and Ferry streets. It was dedicated in 1897, and was a gift of Mrs. Mary E. Hart, "for the promotion of learning and the arts, in loving memory of her husband, William Howard Hart." The building is constructed of the finest quality of Vermont white marble and is in the Italian renaissance style. It cost \$150,000, and at present contains about 40,000 volumes. The interior finish is largely in Sienna marble, and in some respects the building is even more beautiful than the new Boston Public Library.



### TROY'S BANKING INSTITUTIONS

The Union National Bank of Troy, No. 56 Fourth Street, succeeded to the business of the Union Bank of Troy on March 21, 1865. The United National Bank of Troy, N. W. corner of First and State Streets was organized March 7, 1865. The Manufacturers' National Bank of Troy, corner of River and King Streets, became a National Bank, Jan. 3, 1865. The Troy Savings Bank, N. E. corner of Second and State Streets, incorporated April 23, 1823, receiving from the first depositor, Martha Jefferson, a colored woman, \$20. On March 25, 1875, it removed to the new and attractive granite building. The building with site cost about \$550,000. Music Hall in the Troy Savings Bank Building is one of the most admirably planned halls in the United States. It is 110 feet in length, 75 feet in width and 65 feet in height, with 1250 seats; the stage is 21 feet deep and 55 feet wide. The fresco are highly artistic.



SUBWAY



UNION STATION



INTERIOR

#### UNION STATION—TROY

The Union Railroad Station, on Sixth avenue, between Broadway and Falton streets, was erected jointly by the New York Central, Boston & Maine and Delaware and Hudson companies. Has convenient offices and mailing rooms and a large track yard, the tracks being approached by subways. It is built of granite and Philadelphia pressed brick and cost about \$300,000.



SOME OF TROY'S BUSINESS HOUSES



#### IRON WORKS—SOUTH TROY

The Henry Burden & Sons Iron Works ranks with Troy's foremost industries. With its miles of buildings and its acres of wonderful machinery it is really one of Troy's triumphs. Here are manufactured annually over 55,000,000 horse and mule shoes. Here, also, is manufactured in immense quantities bar iron, steel, nail-rod, hoop iron, sheet copper, machinery, tools and implements. This concern alone gives employment to thousands of hands.



ENTRANCE TO WATERVLIET ARSENAL.

Across the river from Troy, at Watervliet, is the famous Watervliet Arsenal, where was constructed the largest gun ever manufactured. The Arsenal now embraces about 100 acres of land. About 1500 men were employed at the arsenal during the civil war, manufacturing ordnance supplies.



SOME OF TROY'S WELL-KNOWN PUBLIC BUILDINGS.



INTERIOR OF GUN SHOP—WATERVLIET ARSENAL

Showing the 16 inch gun, the largest ever cast.

It is 49 feet 3 inches long, weighs 285,000 pounds, being 5 feet in diameter over breech and 28 inches at muzzle. It required 350,000 pounds of forging to manufacture and cost about \$94,000. It throws a projectile 5 feet long weighing 2,400 pounds and requires 600 pounds of smokeless powder to each charge. The velocity attained by the projectile is 2,300 feet per second, and according to De Marre's formula will penetrate 42.3 inches of steel at muzzle and 34.6 inches at a distance of 2 miles.





THE MAMMOTH 16 IN. GUN MOUNTED FOR TRANSPORTATION  
Is located at Sandy Hook, N. J., for Coast Defence.



SOME OF TROY'S CLUB HOUSES.



#### STATE ARMORY.

##### FERRY AND FIRST STREETS.

State Armory, corner River and Ferry streets. Constructed of brick and iron. Built 1886, at a cost of \$240,000. It is the officers' headquarters of the 2nd. Reg't N. Y. N. G. Its dimensions are 130 x 275; drill room floor, 124 x 224.



#### SOLDIERS' AND SAILORS' MONUMENT.

##### MONUMENT SQUARE.

Rensselaer County Soldiers' and Sailors' Monument on Monument Square cost \$50,000—is a granite shaft 93 feet high; bronze figure, 13 feet high; total height, 106 feet. Interesting scenes in national history are presented in artistic bronzes in the sides of the monument.



### HIGH SCHOOL

Troy High School located on west side of Fifth Avenue, south of Broadway ranks with the finest buildings used for educational purposes in the United States. It is four stories high, and fireproof, being constructed with terra cotta brick with granite trimmings.

It was completed in 1900 at a cost of about \$150,000. There are 600 seats in the assembly hall.



RECEPTION HALL AND STAIRWAY  
OF RUSSELL SAGE HALL.



EMMA WILLARD SCHOOL.  
SHOWING RUSSELL SAGE HALL ON THE RIGHT.

The Emma Willard Seminary, founded in 1821, is the most famous of Troy's educational facilities, which are the very best. It was the first institution to be established in America for the higher education of women. The school has three handsome memorial buildings; that on the right is the Russell Sage Hall, built by that New York capitalist, formerly a resident of Troy, at a cost of \$150,000, and used as a dormitory; Gurley Memorial Building (in the centre) used for schoolrooms and as an assembly hall, and Plum Memorial (on the extreme left) headquarters of Seminary Conservatory of Music and Art. The school is a fitting school for Vassar, Wellesley, Smith and other colleges.



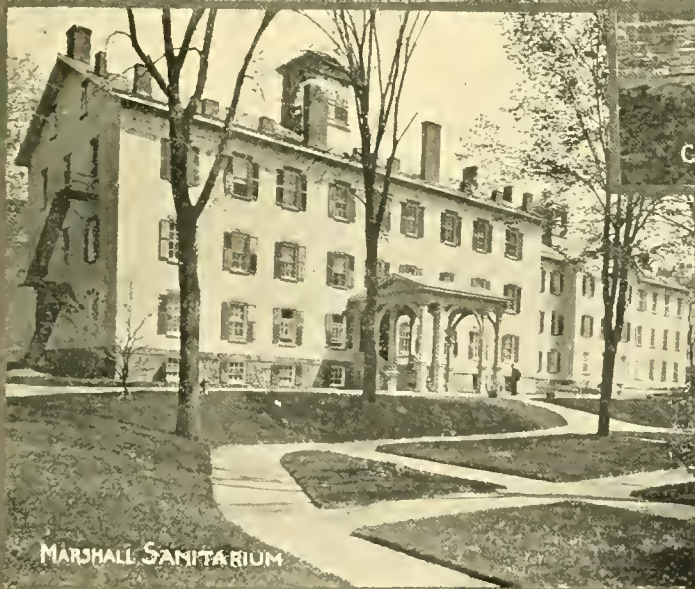
A FEW OF TROY'S THREE-SCORE-AND-TEN CHURCHES.



SAMARITAN HOSPITAL



CATHOLIC ORPHAN ASYLUM



MARSHALL SANITARIUM



TROY ORPHAN ASYLUM

SOME OF TROY'S REPRESENTATIVE CHARITABLE INSTITUTIONS.



OLD WATERFORD BRIDGE



BURDEN FALLS



OLD BURDEN WATER WHEEL

#### INTERESTING POINTS NEAR TROY

The Old Burden water-wheel was designed and constructed by Henry Burden, in 1838-39. This immense water-wheel for years has been figuratively denominated "The Niagara of Water-Wheels." It is an over-shot wheel 60 feet in diameter with a width of 22 feet and is one of 1200 horse power. Around its periphery are 36 buckets 6 feet 3 inches deep. Although the celebrated wheel at the Isle of Man has a diameter of 70 feet, its buckets are only 6 feet wide and its estimated power is only 200 horse.

Old Waterford Bridge, crossing the Hudson river between Troy and Waterford, was completed and opened Dec. 3, 1804, is 800 feet long and 30 wide and cost \$50,000. For a long time it excelled anything of its kind in the United States.





THE ROBERT ROSS MONUMENT



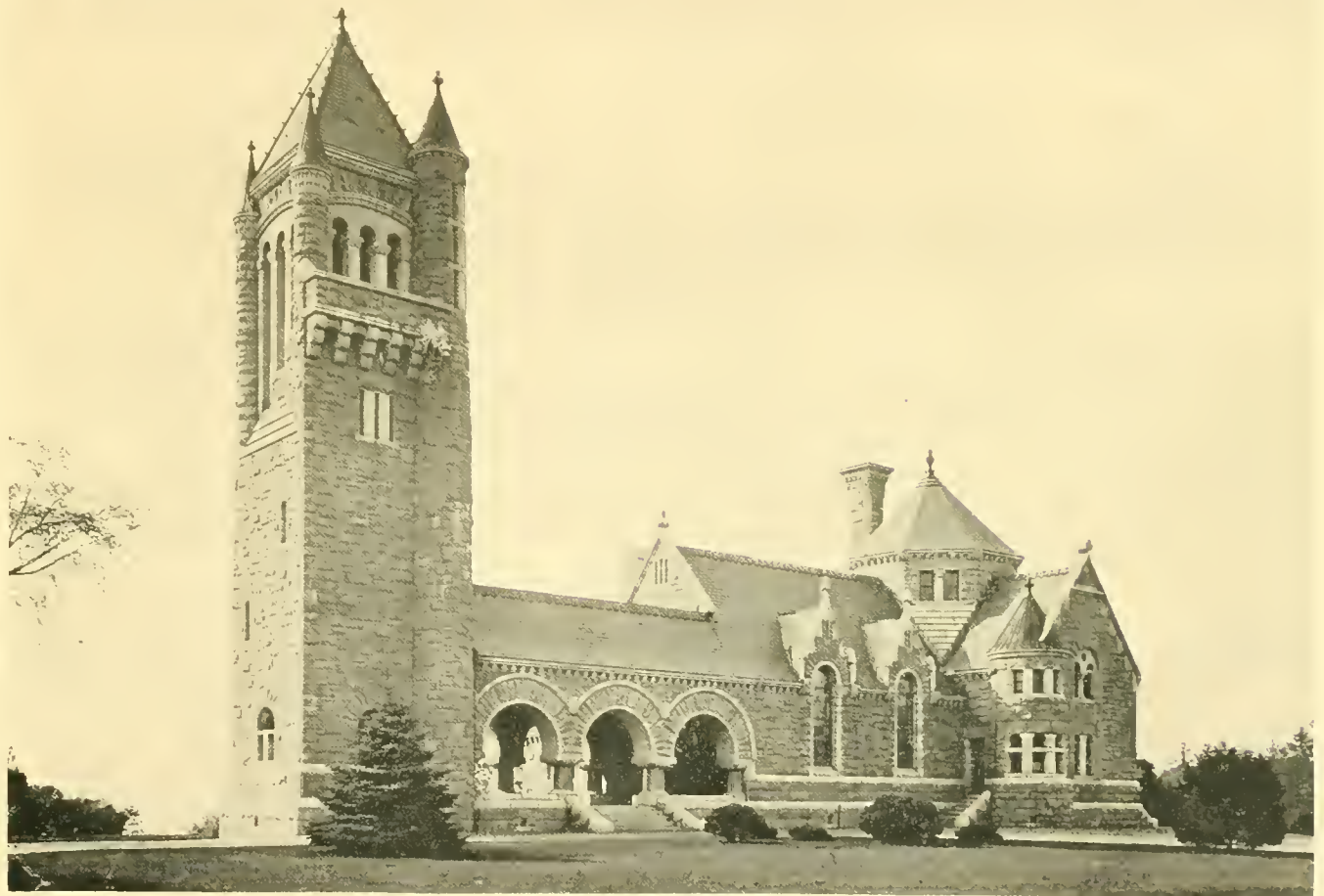
THE GENERAL WOOL MONUMENT  
75 feet high—one of the largest monoliths in the world

OAKWOOD CEMETERY



#### INTERIOR OF EARL CREMATORY

The Reception Room.—The wainscoting is of pink African marble with base and cappings of green Japanese marble. The walls are of Siena marble blocks. Surmounting these is a finely carved cornice also of Siena marble. The columns were cut from a block of green Brazilian onyx which was purchased in London at a great cost, and which cannot be duplicated, the doors leading to the retorts are of bronze with panels of green onyx. Panel on right is a marble mosaic showing Rebecca at the well, also design of Angels over door leading to Chapel is marble mosaic, designed and executed by Mr. James Inglis, manager of the Crematory, who also designed the entire interior and did the work. Mr. Inglis was awarded high honors at the Paris exposition.



#### THE EARL CREMATORY—OAKWOOD CEMETERY

The Gardner Earl memorial, chapel and Crematorium. This crowning glory of Oakwood Cemetery, is the splendid edifice that, standing upon the brow of the hill, is the cynosure and admiration of all eyes. The building was erected by Mr. and Mrs. William S. Earl, of Troy, as a memorial to their son, Gardner Earl. The structure is of the pink tinted Western granite of Romanesque style, is 116 feet in length and 75 feet wide; the tower is 90 feet high and 18 feet square at the base. This is conceded by authorities to be the finest building in existence for purposes of incineration.



CITY OF COHOES—FROM GRAND VIEW PARK LOOKING NORTH.

Incorporated as a City, April 19, 1870



CITY OF COHOES—THE SPINDLE CITY

This view is from Grand View Park looking east, Bald Mountain in distance, Erie Canal in foreground.



CARTER BUILDING



CITY HOSPITAL



ARMORY

WELL KNOWN BUILDINGS.

The Armory at Hart and Main streets, is used by Company "B," Second Regiment (Seventh Separate Company), N. Y. N. G.



COHOES CITY HALL.

COR. MOHAWK AND ONTARIO STREETS.

Erected 1895. Cost of building \$65,000. Cost of land \$35,000. Built of Ohio Sandstone.



MASONIC TEMPLE.

Used by Cohoes Lodge No. 116 Symbolic Masonry and Cohoes Chapter No. 168 Capitular Masonry.



### "THE HARMONY MILLS"

Incorporated 1851. These mills manufacture prints, cheese cloth, bagging, etc., have 275,000 spindles, employing 3240 persons and turn out over 1,600,000 yards of cotton goods per week.





STATE DAM- MOHAWK RIVER

Built in 1817.



ST JOHN'S



FIRST PRESBYTERIAN



FIRST BAPTIST

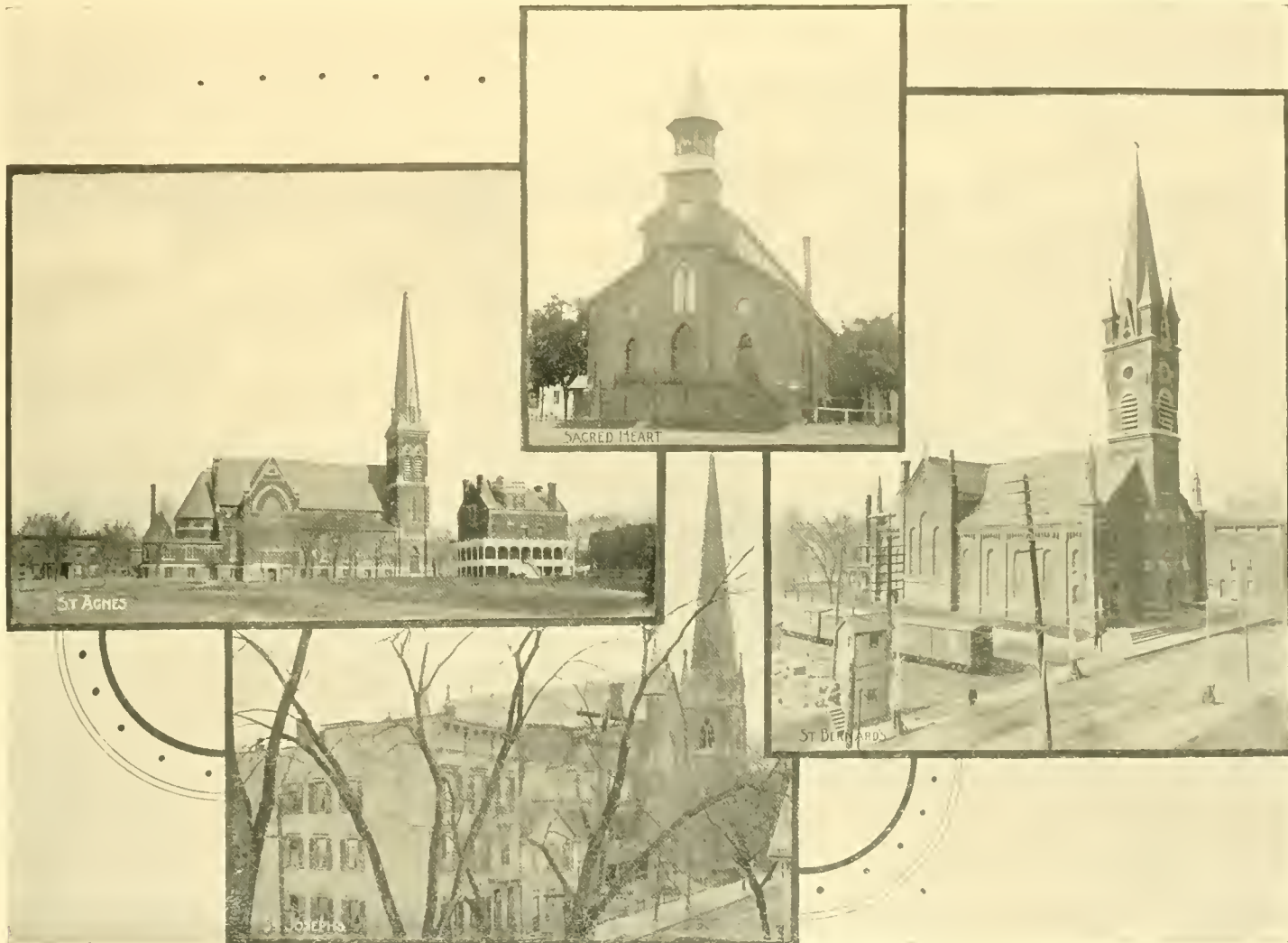


REFORMED CHURCH

SOME COHOES CHURCHES.

St. John's (Episcopal), Mohawk, near Howard St.  
 First Baptist, Mohawk St., opposite White.

First Presbyterian, Mohawk St. from Seneca to Ontario Sts.  
 Reformed Church, Mohawk, Cor. Pine St.



THE ECCLESIASTICAL SIDE OF COHOES

St. Agnes', (R. C.), Mangam, Cor. Johnston Ave.

St. Bernard's (R. C.), Ontario, Cor. Rensselaer, Largest Roman Catholic Church in Cohoes.

St. Joseph's ( French Catholic). Congress St., near Hart St.

Church of Sacred Heart of Jesus (R. C.), Forest Ave., cor Park Ave., Adams Island.



COHOES FALLS — 90 FEET HIGH

Less than one mile from center of Cohoes, affording an unfailing water power for the manufactories of the city.



LIBRARY OF CONGRESS

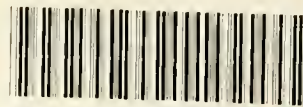


0 014 109 615 1





LIBRARY OF CONGRESS



0 014 109 615 1

permalife®  
pH 8.5