

Historic, Archive Document

Do not assume content reflects current scientific knowledge, policies, or practices.

624-3

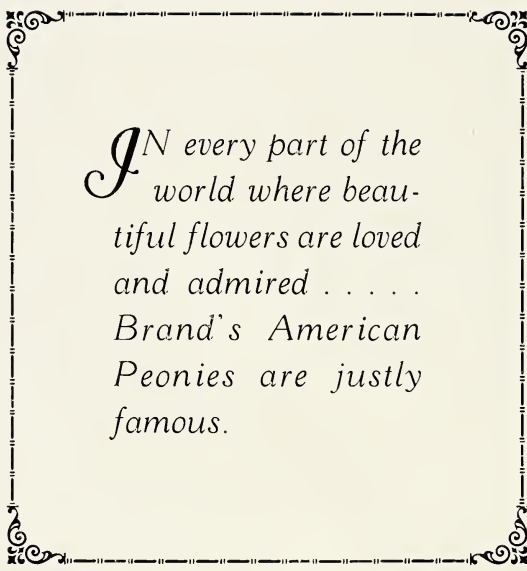
LIBRARY
RECEIVED
★ JAN 3 1910 ★
U. S. Department of Agriculture.

Brand Peony Farms

Incorporated
BOX - 408
Faribault, Minn.

*1929
Catalogue*





*I*N every part of the
world where beau-
tiful flowers are loved
and admired
Brand's American
Peonies are justly
famous.

BRAND'S

Peonies + Irises + Lilacs

and Other Flowers
and Shrubs



Mr. Brand in the Peony Fields

BRAND PEONY FARMS, INC.

Box 408
FARIBAULT, MINNESOTA

BRAND PEONY FARMS



A Bed of Five Year Old Transplanted Seedling Peonies Containing Over 17,000 Different Kinds

Peonies

AS OUR lists of Peonies and Irises do not change materially from one year to another we do not issue a new edition of our regular catalog of these specialties of ours only as our supply of an edition becomes exhausted. When we had our catalog No. 10 printed we had a sufficient number run off to carry us through 1928-29. So we will not issue a complete Peony and Iris catalog this season as all of our 1928 customers have a copy of catalog No. 10. Should any one have misplaced or lost his copy and desire another we will gladly mail another.

This catalog is supplementary to catalog No. 10 and so we are including in it very little of the general information about the peony which we go into so thoroughly in our larger one.

We wish to also call attention here to our new 64 page Peony Manual. This book which we think is the most comprehensive treatise ever written on the Peony has also been mailed to all of our 1927 and 1928 customers who have sent us an order amounting to \$5.00 or more. We still have a sufficient number of copies left to supply one to every 1929 customer who sends us an order amounting to \$5.00. This Manual is a splendidly gotten up book. It is printed on fine paper, beautifully illustrated, and treats on all phases of the peony, its history and care, and gives a complete description of many desirable varieties. We do not sell this book as we have written it especially for the benefit of our customers.

8.5—**Adolphe Rosseau** (Dessert & Meehin). Rich dark red. Tall, semi-double, early. \$1.50.

A. J. **Davis** (Brand). Bright light red. Tall, loosely built, early. \$1.00.

7.6—**Alba Sulfurea** (Calot). Creamy yellow. Midseason, profuse bloomer. \$1.00.

8.6—**Albert Crousse** (Crousse). Beautiful soft shell pink. Late. \$1.00.

8.8—**Alsace Lorraine** (Lemoine). Rich creamy white with a touch of brownish yellow. \$3.50.

9.0—**A. M. Slocum** (Franklin). Large creamy white with golden stamens. \$7.50.

7.5—**Archie Brand** (Brand). Deep shell pink with silvery border. \$1.50.

8.1—**Arlequin** (Dessert). Deep violet rose with salmon shadings. \$3.00.

8.1—**Asa Gray** (Crousse). Flesh pink flecked with dots of darker pink. \$1.00.

8.0—**Assmanhausen** (G & K). Delicate light pink variety from Germany. \$4.00.

8.7—**Auguste Dessert** (Dessert). Velvety crimson carmine. A new French variety of unusual merit. \$8.00.

7.8—**Augustin d'Hour** (Calot). Rich solferino—red with silvery reflex. Midseason. \$1.00.

7.2—**Aunt Ellen** (Brand). A dark crimson showing purple. Very early. \$1.00.

8.7—**Avalanche** (Crousse). A splendid late white. Beautifully formed flower. \$1.00.

8.0—**Aviateur Reymond** (Dessert). Beautiful bright cherry red with deeper shadings. \$2.00.

9.0—**Baroness Schroeder** (Kelway). A beautiful tinted white fading to pure white. Late. \$1.50.

8.1—**Benjamin Franklin** (Brand). Very tall, early, brilliant red. Profuse bloomer. \$1.00.

New—**Blanche King** (A. M. Brand). A most promising deep bright pink. \$50.00 net.

8.2—**Brand's Magnificent** (Brand). A wonderful deep garnet red. \$4.00.

8.4—**Candeur** (Dessert). A delicate silvery pink, tinged lilac-rose. \$4.00.

7.8—**Charles McKellip** (Brand). A brilliant deep red. Splendid cut flower. \$2.00.

8.6—**Cherry Hill** (Thurlow). Very early, brilliant cherry red. Tall. \$4.00.

8.4—**Chestine Gowdy** (Brand). Pink and cream. Very late. Excellent cut flower. \$1.00.

8.7—**Claire Dubois** (Crousse). A clear violet rose. Large flower. Late. \$1.00.

8.5—**Clemenceau** (Dessert). Late earmine rose with silvery border. \$4.00.

New—**Commander** (A. M. Brand, 1928). A true self solferino red. Very late. Immense size. Splendid new flower. \$10.00.

8.1—**Couronne d'Or** (Calot). A good late white with a circle of golden stamens. \$1.00.

8.4—**David Harum** (Brand). A distinct bright rose red. Midseason. Very large. \$7.00.



Peonies as They Bloom on Two Year Olds at the Brand Peony Farm

BRAND PEONY FARMS

8.5—**Desire** (Brand). A delicate mauve pink with yellow stamens. Beautiful. \$5.00.

8.1—**Duchess de Nemours** (Calot). A pure creamy white showing green carpels. \$1.00.

9.2—**E. B. Browning** (Brand). Immense white tinted delicate shell pink. Orange tracings at base. \$5.00.

7.6—**Edulis Superba** (Lemon). Finest early deep pink. Northern decoration day flower. \$1.00.

8.5—**Elisa** (Dessert). New French variety. Soft shade of bright pink tinted salmon. Very choice. \$10.00.

New—**Ella Christianson** (A. M. Brand). Deep pink. Strong grower, free bloomer. Midseason. \$50.00 net.

8.7—**Elwood Pleas** (Pleas). Late light shell pink. Very fragrant. \$2.00.

8.9—**Enchanteresse** (Lemoine). A pure creamy white splashed with crimson. Late. Extra good for extreme north. \$3.00.

8.3—**Eugene Verdier** (Calot). Flesh pink with distinct yellow shadings showing in the collar. Late midseason. \$2.00.

8.6—**Eugenie Verdier** (Calot). Light hydrangea-pink. An excellent flower. Midseason. \$1.00.

7.7—**Fanny Crosby** (Brand). Pink guards surround a central ball of intense yellow, incurved petals. Early. \$3.50.

New—**Fanny Lee** (Vories). American Beauty red. A splendid landscape variety. \$6.00.

8.2—**Faribault** (Brand). Deep rose with a silver sheen. Splendid late cut flower. \$1.50.

8.4—**Felix Crousse** (Crousse). A deep rose red. A pure globular type with no stamens. \$1.00.

9.3—**Festiva Maxima** (Miellez). Purest white with flecks of intense crimson. Large and early. \$1.00.

9.2—**Florence Macbeth** (Sass). Soft blush pink at center fading lighter towards edges. A new sort of exceptional merit. \$15.00.

9.1—**Frances Willard** (Brand). Blush white with an occasional carmine touch. Midseason. \$2.50.

8.1—**Galathee** (Lemoine). Flesh white. Pronounced pleasant fragrance. Tall, strong grower. Late. \$3.00.

—**General Gorcas** (Vanleeuwen). New. Cup shaped flowers. Large petals, white with some petals flecked crimson. Stock scarce. \$10.00.

8.9—**Georgiana Shaylor** (Shaylor). Late midseason. Pale rose-pink, splashed crimson. Shaylor's greatest flower. \$3.00.

8.5—**Germaine Bigot** (Dessert). Remarkable show flower. Pale salmon pink with crimson markings. \$1.00.

9.2—**Grace Loomis** (Saunders). One of the best of all white peonies. A tall growing late variety. \$15.00.

8.8—**Grandiflora** (Richardson). Soft shell pink. Flowers very large. Unusually late. \$1.50.



Ella Christianson

8.1—**Grandiflora N. Plena** (Lemon). Very early white, showing markings of crimson. Sulphur yellow at base of petals. True stock scarce. \$1.50.

New—**Hansina Brand** (A. M. Brand). Immense flower. Opens flesh pink. Fades to Solange color. Late, strong grower. \$50.00 net.

New—**Hazel Kinney** (A. M. Brand). Beautiful large hydrangea-pink. Midseason. Great show flower. \$50.00 net.

7.9—**Helen Wolaver** (Brand). A late deep rose pink, resembling a rose. Fragrant. \$1.00.

8.8—**Henry Avery** (Brand). A large light shell pink showing a broad distinct band of yellow about the collar. \$5.00.

7.7—**H. F. Reddick** (Brand). Splendid late dark red. A profuse bloomer and a good cut flower. \$1.00.

8.7—**James Kelway** (Kelway). Opens a flesh pink which soon changes to a beautiful white. Midseason. \$1.50.

7.9—**Jeanne D'Arc** (Calot). A soft bright pink with a collar of pink, salmon, and yellow petals. Early midseason. \$1.00.

9.2—**Jeannot** (Dessert). A delicate lavender pink with salmon pink shadings at base of petals. Wonderful flower. \$10.00.

8.9—**Jubilee** (Pleas). Immense pure white with long narrow lacy petals. \$2.00.

8.6—**Judge Berry** (Brand). The best early light pink. Indispensable to every garden. \$4.00.

8.8—**Karl Rosenfield** (Rosefield). Early midseason. Rich bright red. A splendid all around flower. \$1.50.

9.0—**Katherine Havemeyer** (Thurlow). One of Thurlow's finest pinks. Late and fragrant. \$20.00.

9.8—**Kelway's Glorious** (Kelway). A wonderful white peony of the largest size. A real show flower. \$10.00.

8.8—**Kelway's Queen** (Kelway). A uniform mauve pink with center flecked crimson. A distinct peony. Ours is the true variety. \$10.00.

BRAND PEONY FARMS



A Field of Two Year Peonies—Brand Peony Farms

BRAND PEONY FARMS

9.1—**Lady Alexandra Duff** (Kelway). This is a flesh pink that one must see to appreciate its wonderful beauty. \$2.00.

New—**Lady Kate** (Vories). Uniform light mauve. A tall late variety. \$25.00.

7.8—**Lafayette** (Dessert). A lovely shade of salmon pink. A really good peony. \$1.00.

9.2—**La Fee** (Lemoine). A beautiful mottling of different shades of pink. A striking show flower. Our stock is true and clean. \$7.00.

9.0—**La France** (Lemoine). A true uniform apple blossom pink, with crimson splashes on the guards. Fragrant and a wonderful show flower. \$4.00.

New—**Lake O'Silver** (Franklin). A pink silver tipped variety with golden anthers showing throughout. \$3.00.

8.6—**La Lorraine** (Lemoine). Soft even shade of creamy pink. Midseason. A wonderful show flower. \$6.00.

8.5—**La Perle** (Crousse). A soft shade of pink. Cup shaped, fragrant, late midseason. \$1.00.

8.3—**La Rosiere** (Crousse). A beautiful loosely built white with a band of yellow stamens around the center. \$1.00.

8.1—**La Tendresse** (Crousse). Color, creamy white, changing to pure white. Center flecked crimson. Early. \$1.00.

New—**Laverne Christman** (A. M. Brand). This flower resembles Therese. Much later. Award of Merit, 1923, National Peony Show. \$50.00 net.

9.9—**Le Cygne** (Lemoine). An almost perfect creamy white. The highest rated peony. \$8.00.

New—**Libellule** (Dessert). An excellent flesh pink. Pleasant fragrance. A new French variety. \$5.00.

New—**Lillian Gumm** (Gumm). Uniform deep apple blossom pink. Large size. Late midseason. A beautiful variety. \$10.00.

8.1—**Livingstone** (Crousse). A late deep pink of perfect rose type. \$1.00.

9.0—**Longfellow** (Brand). A striking bright crimson which does not fade in the sun. One of the highest rated reds. \$3.50.

8.4—**Lora Dexheimer** (Brand). An intense flaming crimson. Early midseason. Beautiful in form. \$2.00.

7.6—**Lord Kitchener** (Renault). A very early bright red. Valuable because it is early. Shows no stamens. \$1.00.

8.8—**Loveliness** (Hollis). Hydrangea Pink, changing to lilac white. Hollis's best peony. Splendid show flower. Very late. \$2.00.

8.7—**Luetta Pfeiffer** (Brand). Large semi-double pinkish white. Very early. A splendid flower. \$5.00.

8.6—**Mme. Auguste Dessert** (Dessert). Uniform violet-rose, petals slightly flecked crimson. Early midseason. \$1.50.

8.1—**Mme. Calot** (Meillez). Delicate flesh pink guard petals encloses compact mass of creamy white petals tipped crimson. Splendid Decoration Day cut flower variety. \$1.00.



Some of Our New Seedlings Not Yet Introduced

7.9—**Mme. De Verneville** (Crousse). Large bomb type. Guards white with center showing carmine tracing. Great cut flower. Rated much too low. \$1.00.

7.9—**Mme. Ducl** (Mechin). This variety resembles Mons Jules Elie. Desirable cut flower. \$1.00.

New—**Mme. Edouard Doriat** (Dessert). The best of Dessert's late productions. A splendid large white. Petals often show carmine border. Late. A superior new variety. \$10.00.

8.5—**Mme. Emile Galle** (Crousse). Delicate sea shell pink. Extra fine in bud. One of the best late varieties. Resembles Tourangelle. \$1.00.

8.9—**Mme. Emile Lemoine** (Lemoine). A tall strong growing white. One of the very best peonies. Late midseason. \$1.50.

8.8—**Mme. Gaudichau** (Millet). Very dark crimson, resembling Mons Martin Cahuzac. \$5.00.

9.4—**Mme. Jules Dessert** (Dessert). A creamy white, lighted with buff and salmon shades. A few golden stamens add beauty to an already beautiful flower. \$3.00.

8.5—**Mme. Manchet** (Dessert). A late lilac pink. Color striking and a profuse bloomer. \$1.00.

New—**Madelon** (Dessert). A beautiful silvery pink. Among the latest of Dessert's originations. Late. \$10.00.

8.4—**Marguerite Gerard** (Crousse). Delicate hydrangea pink changing to a creamy white. Splendid garden flower. \$1.00.

8.9—**Marie Crousse** (Crousse). Delicate shell pink bordering on salmon. Fragrant. Late midseason. \$2.00.

8.3—**Marie Jacquin** (Verdier). White guard petals surround a collar of yellow stamens. Semi-double. \$1.50.

8.5—**Marie Lemoine** (Calot). Creamy white. Very fragrant. Late. \$1.00.

9.1—**Martha Bulloch** (Brand). Mammoth late pink. A good garden flower as well as a show flower. \$8.00.



Myrtle Gentry

8.7—**Mary Brand** (Brand). An outstanding deep crimson. Midseason. A real show flower. \$2.00.

New—**Mary B. Vories** (Vories). A pure white with an occasional tracing of carmine. Late. \$10.00.

9.0—**Mary Woodbury Shaylor** (Shaylor). Delicate shell pink. Strong stems. Midseason. Fragrant. \$8.00.

7.3—**Midnight** (Brand). Early dark red. Almost as dark as Mons Martin Cahuzac. \$1.00.

9.0—**Milton Hill** (Richardson). Delicate salmon pink. Large flower. Late. \$5.00.

8.3—**Monsieur Dupont** (Calot). Late midseason white. Center splashed crimson. Profuse bloomer. Strong grower. \$1.00.

9.3—**Mons. Jules Elie** (Crousse). Very early fragrant rose pink. Enormous blooms. \$1.50.

8.8—**Mons. Martin Cahuzac** (Dessert). Darkest maroon red peony. Medium early. \$3.00.

8.4—**Mont. Blanc** (Lemoine). Milk white with center slightly tinted rose. Midseason. \$2.50.

8.2—**Moses Hull** (Brand). Resembles Chestine Gowdy in color. Midseason. Fragrant. \$1.00.

9.6—**Mrs. A. M. Brand** (A. M. Brand). The Gold Medal White. A wonderful new peony. Late. \$50.00 net.

8.3—**Mrs. A. G. Ruggles** (Brand). Often mistaken for Therese. A good pink. \$3.00.

New—**Mrs. Charles Gilbert** (Shaylor). Light delicate pink. Midseason. Fine flower. \$3.00.

9.2—**Mrs. C. S. Minot** (Minot). A beautiful shell pink changing to white. Large. Stock scarce. \$25.00.

New—**Mrs. Deane Funk** (A. M. Brand). In color it resembles Walter Faxon but its charm lies not only in its beautiful color but in its combination of beautiful color and beautiful form. \$50.00 net.

New—**Mrs. F. A. Goodrich** (A. M. Brand). Deep uniform pink. Large, late, and fragrant. Award of merit at London, Ontario. \$50.00 net.

New—**Mrs. Frank Beach** (A. M. Brand). Large flat ivory white. Long narrow lacy petals. A glorified jubilee. \$50.00 net.

New—**Mrs. Harriet Gentry** (A. M. Brand). A pure rose type glistening white. Stock scarce. Late. \$50.00 net.

New—**Mrs. John M. Kleitsch** (A. M. Brand). A violet rose with a distinct lavender cast. A wonderful late, fragrant variety. \$50.00 net.

New—**Mrs. Romaine B. Ware** (A. M. Brand). Dainty flesh pink of the most exquisite form, Midseason. Fragrant. \$50.00 net.

7.5—**Moonbeam**. A delicately formed flat white flower slightly shaded rose. \$2.00.

New—**Myrtle Gentry** (A. M. Brand). A late Tourangelle pink of large size and splendid form. A true rose fragrance. Silver medal. \$50.00 net.

9.0—**Nina Secor** (Secor). Beautiful white of exquisite form with tiny lacy petals. \$8.00.

8.8—**Nymphæa** (Thurlow). A splendid white with petals so arranged as to strikingly resemble a water-lily. \$3.00.

8.5—**Octavie Demay** (Calot). The best real early very light bright pink. \$1.00.

Officinalis Rosea. A splendid early rose pink. The only good pink officinalis. \$1.00.

Officinalis Rubra. The finest of all the officinalis. Dark brilliant red. \$1.00.

7.4—**Old Silver Tip** (Brand). A soft madder-red with a pronounced silver sheen. Flowers large and profuse. Wonderful landscape variety. \$1.00.

8.5—**Opal** (Pleas). Delicate pink fading to white. Tall, vigorous, late midseason. \$2.00.

8.3—**Perrette** (Dessert). White slightly tinged flesh and straw-yellow. Fragrant. \$3.00.

9.2—**Philippe Rivoire** (Rivoire). A very fine bright crimson. The highest rated red. \$15.00.

8.8—**Phoebe Cary** (Brand). A second Martha Bulloch. A beautiful lavender pink in bloom with Marie Lemoine. Very tall. A great peony. \$5.00.

8.8—**Phyllis Kelway** (Kelway). A bright pink flower of great size with long narrow petals loosely arranged. \$8.00.

8.2—**Pierre Duchartre** (Crousse). A late clear pink that bears a striking resemblance to La France. An excellent variety. \$1.50.

New—**President Coolidge** (A. M. Brand). A late large pink of good color and wonderful form. One of the finest of all for landscape effect. \$50.00 net.

9.3—**President Wilson** (Thurlow). Soft pink with guards sometimes showing crimson markings. Late and fragrant. \$30.00.

BRAND PEONY FARMS

8.6—**Primevere** (Lemoine). One of the best true yellow peonies. Very choice. \$2.50.

7.5—**Prince of Darkness** (Brand). Early rich, dark maroon peony. Semi-rose type. \$1.00.

8.3—**Rachel** (Lemoine). Clear soft delicate pink with salmon shadings. Late midseason. \$3.00.

7.9—**Rachel** (Terry). Splendid deep bright red. Better than most people think. \$1.00.

9.0—**Raoul Dessert** (Dessert). Mauve with carmine pink shadings and silvery reflex. Extra choice. \$6.00.

8.4—**Renee Marie** (Dessert). A delicate shell pink, strong stems, free bloomer. A pretty flower. \$3.00.

8.7—**Reine Hortense** (Calot). Uniform hydrangea pink, flecked with crimson. A truly wonderful flower. \$1.50.

New—**Rev. H. Tragitt** (A. M. Brand). A dwarf variety producing immense pure white blooms with great broad petals of fine substance, something very distinct. \$10.00.

8.8—**Richard Carvel** (Brand). The best of all early reds. Very fragrant. Wonderful early cut flower. \$3.50.

9.0—**Rosa Bonheur** (Dessert). Light violet rose, with guard petals flecked crimson. One of the best show flowers. \$3.00.

8.8—**Rosette** (Dessert). A pretty fine shaped flower. Silvery pink with a touch of crimson on the edge of the petals. \$4.00.

7.2—**Rubra Superba** (Richardson). A late red that gives good bloom after the other reds are gone. \$1.00.

7.9—**Ruth Brand** (Brand). A soft lavender pink. Early splendid cut flower. Does exceedingly well in the south. \$1.50.

9.0—**Sarah Bernhardt** (Lemoine). A large apple blossom pink. Very showy flower both in field and show room. \$2.00.

Shenandoah (Brand). A sweet scented dark red coming into bloom with Rubra Superba. \$1.00.

8.7—**Silvia** (Saunders). A semi-double that resembles a wild rose more than a peony. Very fine. Wild rose pink. \$12.00.

7.7—**Sisters Annie** (Brand). Late midseason delicate seashell pink. Splendid cut flower. \$1.00.

9.7—**Solange** (Lemoine). Deep orange salmon overlaid with a delicate rich cream. Late. \$5.00.

9.1—**Souvenir De Louis Bigot** (Dessert). Salmon pink. Resembles Walter Faxon. Better field flower. Very choice. \$3.50.



Mrs. A. M. Brand

8.3—**Splendida** (Kelway). Tall, strong growing, deep rose pink. Fragrant. Late. \$1.50.

8.5—**Standard Bearer** (Hollis). Light violet rose resembling Mons. Jules Elie. Dwarf. \$2.00.

8.4—**Strassburg** (G & K). Very large semi-rose variety. Delicate lilac rose color. Stock very scarce. \$3.00.

9.8—**Therese** (Dessert). An almost perfect pink peony. \$3.50.

9.4—**Tourangelle** (Dessert). A late delicate lavender pink. When in perfect form we think this the most beautiful of all peonies. \$3.00.

8.3—**Venus** (Kelway). A clear hydrangea pink. Tulip shaped, clean foliage. Splendid cut flower. \$1.00.

8.2—**Victoire De La Marne** (Dessert). Bright rose red. Large, well formed flower. Midseason. \$2.50.

New—**Victory Chateau Thierry** (A. M. Brand). Early. Of the largest size. Cup shaped. Light salmon pink. One of the finest of all. \$50.00 net.

9.3—**Walter Faxon** (Richardson). A clear self color salmon pink. One of the greatest show flowers. \$4.00.

8.8—**W. F. Christman** (Franklin). Delicate flesh pink. Rose type and fragrant. Midseason. \$4.00.

8.3—**Winnifred Domme** (Brand). A brilliant scarlet red. No other like it. Brightest of all reds. Early midseason. \$3.00.

7.9—**Wm. Penn** (Brand). Light rose. Flowers very large. One of the most fragrant of all peonies. \$1.00.

BRAND PEONY FARMS



A Field of Two Year Old Mons. Jules Elite

Single Peonies

8.4—Albiflora (Dessert). Very large single white, with long yellow stamens. Tall. Early. \$2.00.

8.6—Avant Garde (Lemoine). A blending of white and shell pink. A Wittmanniana hybrid and comes into bloom before any of the Chinensis peonies. \$5.00.

Edith West (Brand). Resembles Albiflora, except that the petals have more substance. The plant is more upright. Later than Albiflora. \$3.00.

Flanders Fields (A. M. Brand). A single of the most brilliant red. Two rows of petals surround a large prominent center of golden stamens. The petals stand out flat and are of great substance, rich and velvety in appearance. \$10.00.

Harriet Olney (Brand). Soft rose pink. Flowers large, petals long, broad, and shapely. Beautiful peony. \$3.00.

Krinkled White (A. M. Brand). The bud of this variety resembles a pale pink tulip. As it opens it develops into a large flower with great broad pure white petals that are krinkled like crepe paper. A splendid show flower and a splendid field flower. \$10.00.

Laciniata. Bright scarlet red. Foliage distinctly different from that of the Chinensis

peony being finely cut although not so fine as that of Tenuifolia. \$5.00.

8.6—La Printemps (Lemoine). A Wittmanniana hybrid. Beautiful single deep pink. In bloom with Avant Garde. \$5.00.

8.4—La'Etincelante (Dessert). A very bright pink. Petals margined with silver. \$2.50.

8.5—Marguerite Dessert (Dessert). Pale blush pink. Petals dotted carmine like Asa Gray. \$4.00.

Mellin Knight (Brand). A bright rich crimson. Tall and extra good. \$3.00.

8.9—Pride of Langport (Kelway). Color a soft peach-pink, retains its color in the sun. Wonderfully beautiful. \$5.00.

President Lincoln (A. M. Brand). Color the most dazzling of brilliant red. As a field flower it stands the burning sun the best of any single we have ever seen. A new peony. \$100.00.

Schwindt (G & K). Large silvery pink. Blooms in clusters. Excellent for landscaping. \$3.00.

Watteau (G & K). Large snow white guard petals. Center a mass of golden stamens. Late. \$3.00.

Japanese Peonies

Akashigata (Japan). Guard petals a bright carmine-rose. \$3.00.

8.5—Alma (Shaylor). Delicate pale pink. \$3.00.

8.0—Altar Candles (Pleas). A fine flesh pink. \$3.00.

9.2—Ama-no-sode (Japan). This is one of the highest rated Japs. Color a bright rose pink. \$25.00.

9.2—Fuyajo (Japan). A rich mahogany-red, center petaloids red. A very striking variety. \$10.00.

Fuji-zome-gorono (Japan). A delicate colored pink of the largest size. Stock very scarce. \$10.00.

Hennri Potin (Doriat). A new peony. Color a deep China pink shaded carmine. \$5.00.

8.6—King of England (Kelway). Uniform shade of deep red. Center is a large tuft of long

self colored petaloids, prominently edged with gold. \$3.00.

8.6—Mikado (Barr). Dark red. One of the best red Japanese peonies. \$3.00.

8.7—Princess Duleep Singh (Kelway). Guard petals a deep violet rose. Staminodes rose and gold. \$3.00.

9.0—Some-ga-noko (Japan). Rich, velvety dark red; center petals a golden yellow streaked red. \$5.00.

9.4—Tomatbako (Japan). Petals light pink, center yellow tipped pink. Very fine. \$20.00.

9.0—Toro-no-maki (Japan). One of the finest of all Japanese white peonies. Creamy white. \$7.00.

8.0—Torpilleur (Dessert). Rose red, center petals of same color tipped cream. \$3.00.

7.7—Yesso (Japan). Opens flesh white and gradually fades to pure white. \$2.50.

Collections

COLLECTIONS OF PEONIES that you find in various catalogs seldom appeal to people who are acquainted with the many different varieties, or to those who are fortunate enough to live near large peony gardens that they can visit and in so doing make up their list when peonies are in bloom. But there are a great many people each season who are just beginning to get acquainted with named varieties and they have to judge the desirability of any particular sort from the description they find in the catalog. It is practically impossible to convey the beauty of any variety to the reader by short descriptions. To help our customers who find it a task to make up their list, we have made up several collections that vary in price. We believe that any of these collections will give absolute satisfaction. In making up our lists, we have chosen good peonies, varying in color, and season of blooming. We have chosen whites, pinks, and reds, no two of which are exactly alike and few that bloom at the same time.

We have also given you a good discount on each collection and no further discount should be taken.

All roots that we send out in our Collections consist of three to five or more eye divisions. We do not cut the size of our roots that we may fill our orders for these at a lower price, but we do save on our labor.

Our Collection No. 1

For Beginners

For your first peonies, we believe we have selected from the standard varieties 12 of as good peonies as you can purchase for the money. Three in the list rate 9 or above and belong in the world's 26 best. No peony in the list rates below 8. Entire list of 12 good peonies for \$12.00.

RED	PINK	WHITE
8.1 Ben Franklin	8.5 La Perle	9.0 Baroness Schroeder
8.4 Lora Dexheimer	8.4 Chestine Gowdy	9.3 Festiva Maxima
8.8 Karl Rosenfield	8.5 Octavie Demay	8.1 Couronne d'Or
8.7 Mary Brand	9.3 Mons. Jules Elie	8.9 Mme. Emile Lemoine

One of our customers in Memphis, Tennessee wrote as follows on May 19, 1928: "Three years ago I ordered Festiva Maxima, Mons. Jules Elie, and Ben Franklin. The first spring they all had from one to three blooms on each plant; the second spring they had from two to four blooms; but this spring I never saw such a wonderful display. It looked as if each one was

trying to out do the other. The Festiva Maxima and Mons. Jules Elie were wonderful, but my favorite was Ben Franklin. It was such a deep, dark glorious red."

All three of these varieties are found in the above collection with nine others equally desirable.

Our Collection No. 2

If you have room in your planting for three fine Brand peonies at a reasonable price, we offer the following for **\$10.00**.

8.8 Richard Carvel, Red	8.5 Henry Avery, Pink	9.1 Frances Willard, White
-------------------------	-----------------------	----------------------------

Richard Carvel is the best early red on the market. This variety comes into bloom about two days after the old fashioned red, *Officinalis Rubra*. It is very fragrant and is a valuable sort to grow for cut flowers. On June 8, 1928, we received a letter from a customer in Montezuma, Iowa, reading as follows: "With Richard Carvel, Karl Rosenfield, and Fanny Crosby a bower of beauty and Frances Willard and Chestine Gowdy giving promise of bloom, I am reminded that I need a new catalog. Each plant that blooms makes me want more."

BRAND PEONY FARMS

Our Collection No. 3

Collection of 10 Brand Peonies

Four out of these 10 rate 9 or above and belong in the world's 26 best.

Every peony in the list rates above 8.2.

Richard Carvel is considered the best early red.

Almost everyone concedes Longfellow the best red for color.

One grower writes of Frances Willard as follows: "It takes a good flower to fully deserve to be named after so fine a character as Frances Willard. This tall strong growing plant producing large yet delicate white fragrant flowers, is a fitting memorial to this woman, who always stood for purity.

"It speaks well for American production that in one year three such flowers as Elizabeth Barrett Browning, Martha Bulloch and Frances Willard should have been produced. Browning must be classed as a white peony of regal size and quality. The petals are so packed that all of them cannot fully open, some remaining crinkled. Still it is a dependable bloomer and because it is later it does not come in competition with Mrs. Edward Harding. At its blooming time it is the best pure white and has a sweet fragrance."

Judge Berry is to the pinks what Richard Carvel is to the reds, the best early pink on the market.

If you are looking for something very refined in beauty, you will not be disappointed in Henry Avery. In writing up the Boston Show of 1924 for Peony Bulletin No. 22, Prof. Saunders says of this variety: "In several places in the hall, there were impressive blooms of Henry Avery, which struck me as one of the best Brand varieties I had ever seen on the exhibition table."

This list of peonies if purchased separately amounts to \$42.50. We are offering the entire collection for \$35.00.

RED		PINK	WHITE		
8.7	Mary Brand	9.1	Martha Bulloch	9.2	E. B. Browning
8.8	Richard Carvel	8.5	Henry Avery	9.1	Frances Willard
9.0	Longfellow	8.6	Judge Berry		
8.4	David Harum	8.2	Mrs. A. G. Ruggles		

Our Collection No. 4

In this collection we offer three varieties, a red, a pink, and a white, that come into bloom at the same time. These three peonies are among the earliest varieties, and they make a beautiful group. They are all of the same type and all have a pleasing fragrance.

8.8 Richard Carvel, Red 7.9 Mme. de Verneville, White 9.3 Mons. Jules Elie, Pink

As we have said before, Richard Carvel is the best early red on the market.

Mons. Jules Elie belongs in the list of the world's 26 best.

Mme. de Verneville makes a much better cut flower than Festiva Maxima, and should, we believe, have a much higher rating.

This list of peonies if purchased separately amounts to \$6.00. We offer it as a collection for \$5.00.

Our Collection No. 6

In this collection we have included three excellent late peonies. Each one rates 9 and belongs in the world's 26 best peonies. If purchased separately, these three amount to \$7.00. We offer them for \$6.00.

9.0 Longfellow, Red 9.0 Baroness Schroeder, White 9.0 Sarah Bernhardt, Pink

Our Collection No. 7

We have growing in our fields a list of peonies that are good varieties but the demand for them is so small that we have not included them in our general list. You will note from the rating of these peonies that they are not poor varieties as all in our list rate above 7 and some of them rate even above 8. We receive inquiries each year from people who wish to purchase a number of peonies for landscape purposes at a cheap price. To satisfy this demand we are offering a collection of 10 peonies for \$6.00. Our collection includes the following:

7.1—Delachei (Delache). Dark red. Pro-fuse bloomer.

7.4—Gov. Johnson (Brand). Bright red.

7.6—Pierre Dessert (Dessert). Early dark fragrant red. Tall. Thrifty grower.

8.0—Boule de Neige (Calot). White with red markings.

7.0—Canari (Guerin). Yellowish white.

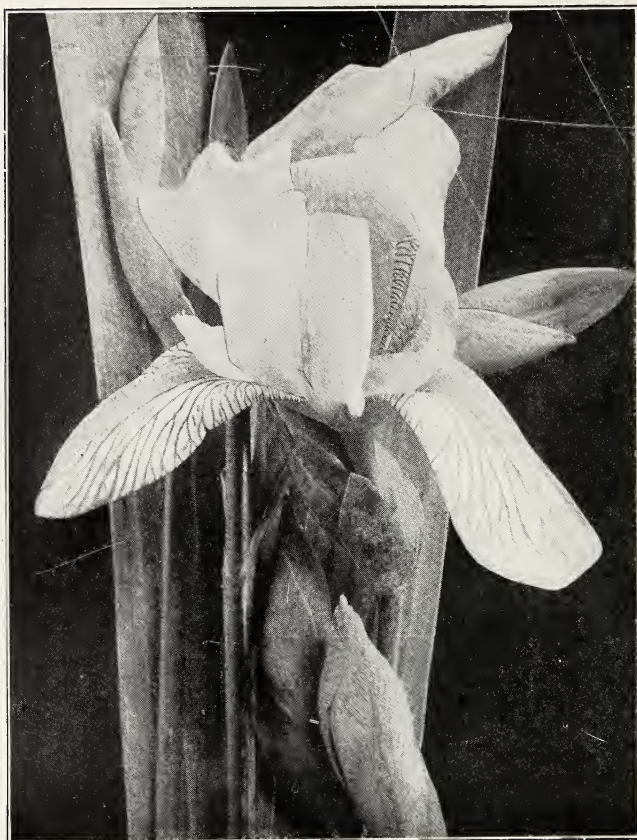
7.9—Mme. Crousse (Calot). Almost a snow white.

8.0—Aurore (Dessert). Very light pink showing golden stamens.

7.6—Delicatissima (Origin Unknown). Delicate salmon pink. Good cut flower.

8.4—Gismonda (Crousse). Late fragrant pink.

7.7—Mme. Forel (Crousse). Large deep rose pink.



Iris

IN OUR general list we have given the price per rhizome. Often our customers wish to plant in groups of three, six, and twelve plants and we are able to make a cheaper price when more than one of any one variety is ordered.

We can supply any 25c Iris if purchased in lots of 3 of one kind for 60c or 12 of one kind for \$2.00.

We can supply any 35c variety in lots of 3 of one kind for 85c or 12 of one variety for \$2.50.

We can supply any 50c variety in lots of 3 of one kind for \$1.25 or 12 of one variety for \$4.00.

We can supply any 75c variety in lots of 3 of one kind for \$2.00 or 12 of one variety for \$6.00.

Afterglow (Sturt). Delicate, misty lavender, shading to buff. 36 inches. **\$0.50.**

Alcazar (Vilm). S. light bluish-violet; F. deep, reddish purple. 42 inches. **\$0.35.**

Ambassadeur (Vilm). S. reddish-violet; F. dark velvety purple. 40 inches. **\$0.75.**

Amber (Dykes). Generally considered the best all around yellow. 36 inches. **\$5.00.**

Anna Farr (Farr). Beautiful white with standards and falls margined pale blue. 36 inches. **\$0.75.**

Ann Paige (Hort). Very fine self-colored lavender blue. 36 inches. **\$1.50.**

Apache (Farr). S. coppery-purple; F. dark crimson brown. 24 inches. **\$3.50.**

Asia (Yeld). S. pale lavender; F. light violet. One of the best. 48 inches. **\$3.00.**

Aurea (Jacques). A pure rich yellow with deep orange beard. 30 inches. **\$0.25.**

Ballerine (Vilm). S. clear light blue; F. a deeper blue. Very fine. 40 inches. **\$1.00.**

BRAND PEONY FARMS

Barton Harrington (Fryer). S. bright golden yellow; F. brown tinged red. 30 inches. \$0.50.

Beau Ideal (Sass). A striking plicata. White bordered rich violet. 30 inches. \$1.00.

Ben Bow (Bliss). Dark bluish violet. Self color. 30 inches. \$0.75.

Black Prince (Perry). S. lavender violet; F. dark velvety violet. 30 inches. \$0.50.

Blue Boy (Foster). S. & F. a rich purple with blue beard. 15 inches. \$0.35.

Bluet (Stur). S. & F. a blue tone. Beautiful garden effect. 24 inches. \$0.35.

Brenthis (Will). S. lavender-violet; F. pansy-violet. 30 inches. \$1.00.

Bruno (Bliss). Dominion seedling. A great flower. S. light purple; F. velvety violet. 42 inches. \$7.50.

B. Y. Morrison (Sturt). S. pale lavender violet; F. velvety purple-bordered lavender. 30 inches. \$0.75.

Cardinal (Bliss). Dominion Seedling. S. distinct shade of lavender, flushed rose. F. rich purple. A wonderfully fine variety. 42 inches. \$10.00.

Cecile Minturn (Farr). Standards and falls a uniform shade of rose; light beards. Large. 30 inches. \$0.50.

Celeste (Lemon). S. & F. pale verbenaviolet with tracings of pure white. 30 inches. \$0.35.

Clematis (Bliss). S. & F. light lavender violet. Clematis like flower. 30 inches. \$0.50.

Cluny (Vilm). S. wisteria violet; F. soft bluish violet. Early and large. 40 inches. \$0.50.

Coppersmith (Shull). Very large. S. purple to cinnamon-drab; F. mahogany red. Very rich velvety coloring. 42 inches. \$7.50.

Crusader (Foster). S. A light shade, and falls a deeper shade of violet blue. 40 inches. \$0.50.

Dalila (Denis). S. flesh white; F. plum red. Distinct and effective. 24 inches. \$0.50.

Dorothy K. Williamson (Will). Large velvety flowers of the most vivid purple. Finest beardless iris. 30 inches. \$0.50.

Dream (Sturt). Entire flower a clear rose pink. Rightly named. 30 inches. \$0.75.

Fairy (Kennicott). Ivory white, bordered and suffused delicate blue. Sweetest scented iris. 42 inches. \$0.25.

Firmament (Grochner). Large, early, lavender blue. 24 inches. \$0.50.

Florentina Alba. Very early white tinted blue. 30 inches. \$0.25.

Fryer's Glory (Fryer). S. golden bronze; F. bright velvety maroon. 30 inches. \$0.25.

Georgia (Farr). One of the best early rose pink. 30 inches. \$0.50.

Gold Crest (Dykes). A bright violet blue with golden yellow beard. 30 inches. \$0.50.



Governor Hughes (Fryer). S. violet, tinged red; F. darker shade, brilliant gold beard. 30 inches. \$0.25.

Her Majesty (Perry). S. soft rose red. F. same color, heavily veined crimson. General effect pink. 24 inches. \$0.25.

Inca (Farr). S. clear saffron-yellow; F. dark plum. 30 inches. \$0.35.

Improved King (Pfeiffer). S. rich golden yellow; F. mahogany. 28 inches. \$0.50.

Iris King (G & K). S. buff yellow; F. garnet brown. A great iris. 24 inches. \$0.35.

Isolene (Vilm). S. Silvery lilac; F. beautiful mauve. 30 inches. \$0.35.

Jacquesiana (Lemon). A splendid old variety. General effect a rich reddish maroon. 42 inches. \$0.35.

Japanesque (Farr). S. lavender-white; F. deep violet, edged lavender. 30 inches. \$0.35.

Julia Marlowe (Shull). A leader among the pink lavender and red purples. 40 inches. \$3.50.

Kathryn Fryer (Fryer). S. clear sulphur yellow; F. velvety violet carmine. 34 inches. \$0.75.

King Karl (Sass). A heavily ruffled richly colored variety. Creamy ground, dotted red. 30 inches. \$2.00.

Knysna (Bliss). S. clear, deep yellow; F. velvety reddish brown. 30 inches. \$0.50.

Kochii (Wild European Iris). A deep blackish purple. A great favorite. 24 inches. \$0.35.

BRAND PEONY FARMS

Lady Byng (Bliss). S. and F. a clear, pale lavender suffused with rose. A free bloomer. 34 inches. \$1.00.

Lent A. Williamson (Williamson). S. broad, lavender violet; F. broad velvety violet-purple. 40 inches. \$0.50.

Leota (Fryer). A splendid rather low growing almost pure white of the largest size. 24 inches. \$0.50.

Lohengrin (G & K). S. light mauve; F. Chinese violet, shading white. 36 inches. \$0.25.

Lona (Sass). S. & F. soft buff marked purple at the edges. Beautifully ruffled. 30 inches. \$2.50.

Lord of June (Yeld). S. immense broad light blue; F. deep lavender marked old gold. Very handsome. 36 inches. \$0.75.

Majestic (Bliss). Dominion seedling. S. lavender, stained bronze; F. rich, velvety raisin-purple. A striking Iris. 36 inches. \$2.50.

Marsh Marigold (Bliss). S. very bright golden yellow; F. rich purple with a distinct bright golden yellow border. Very fine, in fact, the finest in its class. 30 inches. \$0.50.

Mary Barnett (Cumber). S. & F. large light lavender violet with a beautiful satiny texture. An improved Princess Beatrice with a glorious golden beard, so brilliant that it reflects throughout the flower. Very choice. \$7.50.

Mary Garden (Farr). A curiously speckled flower. S. yellow flushed lavender; F. creamy white dotted and veined maroon. 30 inches. \$0.35.

Massasiot (Farr). S. & F. A distinct shade of venetian blue, quite difficult to describe accurately. 30 inches. \$0.35.

Medrano (Vilm). S. rose purple; F. rich dark maroon-purple. 30 inches. \$0.75.

Midwest (Sass). A fine Iris of large size and heavily ruffled. S. white flushed purple; F. white bordered purple. Fine. 30 inches. \$1.00.

Mildred Presby (Farr). S. white to palest yellow; F. rich violet. An outstanding Iris. 30 inches. \$1.50.

Mme. Chereau (Lemon). S. & F. white; beautifully frilled, bordered with delicate clear blue. 36 inches. \$0.25.

Mme. Chobaut (Denis). S. creamy pink dotted bronze-red; F. white, edged russet. 36 inches. \$0.50.

Monsignor (Vilm). S. rich satiny violet; F. deep purple erimson. 28 inches. \$0.25.

Morning Splendor (Shuli). One of the finest Iris ever produced in America. S. petunia-violet; F. rich, raisin-purple. General effect brilliant red. 48 inches. \$2.50.

Mother of Pearl (Sturt). Color effect iridescent like the sea shells which produce Mother of Pearl. S. & F. pale bluish lavender. 48 inches. \$0.50.

Mrs. Alan Gray (Foster). General color effect pink. Very good Iris. 30 inches. \$0.25.

Mrs. Neubronner (Ware). S. & F. rich, clear, golden-yellow. Good variety. 28 inches. \$0.25.

Mrs. W. E. Fryer (Fryer). S. white, shaded heliotrope; F. purple-erimson. Orange beard. A choice Iris which has never been fully appreciated. 32 inches. \$1.00.

Niebelungen (G & K). S. fawn yellow; F. violet purple with faun markings. 30 inches. \$0.25.

Nimbus (Shull). S. light lobelia violet; F. velvety deep purple. Large. 44 inches. \$2.50.

Nine Wells (Foster). S. light violet; F. deep purple. 48 inches. \$0.35.

Nuee d' Orage (Verdier). S. purple drab; F. Bradley's violet. 36 inches. \$0.25.

Opera (Vilm). S. vivid violet red; F. rich velvety purple. In general a rich dark red. 33 inches. \$0.50.

Parc de Neuilly (Verdier). S. & F. navy blue with reddish tinge. 30 inches. \$0.35.

Parisiana (Vilm). S. white with lavender pink markings; F. creamy white, margined purple. 30 inches. \$0.25.

Pauline (Farr). A good self color reddish purple. 30 inches. \$0.35.

Peau Rouge (Cayeux). S. coppery red, shaded violet; F. deep blood red. 30 inches. \$2.00.

Perfection (Barr). A very popular old Iris. S. lavender; F. deep violet. 36 inches. \$0.25.

Phyllis Bliss (Bliss). A pale rosy lilac. Beauty lies in the wonderful form of the flower. 36 inches. \$1.00.

Pioneer (Bliss). The best red purple. S. large, bright red purple; F. broad, strong, deep glowing red purple. Bright orange beard. 36 inches. \$4.00.

Princess Beatrice (Barr). S. & F. large light lavender violet. Very fine. 40 inches. \$0.50.

Prosper Laugier (Verdier). S. fiery bronze; F. velvety ruby purple. 30 inches. \$0.25.

Prospero (Yeld). S. pale lavender, flushed yellow; F. deep red purple. Vigorous grower—enormous flowers. 46 inches. \$0.75.

Pumila (Baby Iris). A dwarf border plant. Very early. Purple. \$0.25.

Pumila Atro Violacea. An early purple. Dwarf grower. Flower larger and better than the preceding variety. \$0.35.

Quaker Lady (Farr). Smoky lavender shading to lemon. A much admired variety. 38 inches. \$0.25.

Ramola (Bliss). Dominion Seedling. S. pale lilac fading to yellow at the base; F. velvety red violet. One of the best of the Dominion seedlings. 44 inches. \$9.00.

Ramona (Mohr). A pretty shade of petunia-violet, flushed brown. 36 inches. \$1.00.

Rhein Nixe (G & K). S. white; F. pansy violet, bordered white. 36 inches. \$0.25.

BRAND PEONY FARMS

Rodney (Bliss). Violet blue, slightly marked in throat. Strong grower. 32 inches. \$0.50.

Rose Unique (Farr). S. & F. violet rose. An early Iris much admired. General effect a deep pink. 24 inches. \$0.25.

Ruth Pfeiffer (Pfeiffer). A delicate combination of white and delicate lavender. Fragrant. 32 inches. \$0.50.

Seminole (Farr). S. soft violet rose; F. rich velvety crimson. One of the brightest and best of the red Iris. 30 inches. \$0.50.

Shekinah (Sturt). Pale lemon yellow shading deeper at the center. 36 inches. \$0.50.

Sherwin-Wright (Kohankie). A rich golden yellow. 24 inches. \$0.25.

Shrewsbury (Farr). S. rosy bronze; F. violet-purple. 24 inches. \$0.35.

Sir Galahad (Shull). S. mauve, very large; F. pansy violet. 36 inches. \$3.50.

Solana (Shull). Clear yellow standards; deep red falls. 36 inches. \$0.75.

Souv. de Mme. Gaudichau (Millet). S. & F. rich deep purple bi-color. One of the best. 36 inches. \$1.00.

Steepway (Scott). S. reddish faun; F. rosy mauve. 42 inches. \$0.75.

Susan Bliss (Bliss). A beautiful rose pink. Light orange beard. 42 inches. \$1.25.

Sweet Lavender (Bliss). S. pale lavender; F. deep rose lavender. 42 inches. \$0.75.

Trianon (Vilm). S. yellow; F. yellow with bluish reflections. 28 inches. \$0.35.

Tristram (Bliss). S. white, tinted lavender; F. velvety, dark purple. Pleasing color combinations. 30 inches. \$0.50.

Troost (Denis). A deep rosy pink; F. lighter, veined violet. 36 inches. \$0.50.

True Charm (Sturt). Finest example of white, bordered light lavender. Flowers very large. 40 inches. \$1.00.

Valerie Mayet (Denis). S. rose-purple; F. velvety purple showing yellow. 36 inches. \$0.50.

Violet Queen. An old variety but a great favorite. A rich violet purple. 36 inches. \$0.25.

Virginia Moore (Shull). S. & F. a bright chrome yellow. Flowers large. A splendid yellow. 36 inches. \$0.50.

White Knight (Saunders). A beautiful variety of the purest white. 30 inches. \$0.50.

White Queen (Gey). A splendid pure white. 24 inches. \$1.00.

W. J. Fryer (Fryer). S. yellow; F. maroon, with yellow border. 30 inches. \$0.50.

Wyomissing (Farr). S. creamy white; F. deep rose. 30 inches. \$0.35.

Yolande (Millet). S. & F. enormous dark velvety blue of great substance and beautiful form. A wonderful landscape variety. 48 inches. \$2.50.

Zanardalia. One of the best light blues. 30 inches. \$0.50.

Zua (Crawford). A dwarf variety. Crinkled white, tinged lilac. 18 inches. \$0.50.

Zwanenburg (Denis). S. & F. cream, blotched greenish yellow. A very odd color. 20 inches. \$0.50.

Some Entirely New Irises

SEVERAL years ago while on a trip to Washington, D. C., I first heard of the Danenhauer Irises. I was told that Mr. Lee Danenhauer had produced several new Irises of striking merit. Hearing the same thing in several different quarters my curiosity was aroused and on my next trip East I ran down to May's Landing, New Jersey, to see Mr. Danenhauer and his Iris. I was surprised at the extent of his hybridizing work, and was certainly pleased with the results of his labors. So impressed was I with several of his seedlings that I made arrangements with him for considerable stock of his very best varieties with the understanding that when they had been tried out by ourselves they were to be introduced by us. We have now had them under test several seasons and are more than pleased with them. They are all remarkable Iris.

Gobelin Red was indeed a surprise to us. It is a real red, and by this we mean red.

Penn Treaty amazed us with its combination of great size, perfect form, and gorgeous coloring. We experienced that same thrill when we saw it in bloom that we did when we first beheld Dominion in full bloom on our grounds.

In fact, all of these Iris are exceptional but we will let Mr. Danenhauer tell the story in his own words.

"In presenting these new Iris Hybrids to our Iris loving friends, both in America and abroad, the merit of the work of our countrymen and theirs in this field of horticulture has been respected and used as a basis of comparison. Much of value to the advancement of the Iris has been received

BRAND PEONY FARMS

from them in person and through their letters so that arriving at this time, after ten years of intensive effort the responsibility of endorsing these introductions is approached with confidence.

"Realizing that the hybridizer plays no other part than performing the necessary work to bring about the existence of these beautiful Iris, he therefore experiences no exaltation and claims no other credit for their perfection; however, it may be interesting to some to review the effort necessary to bring these things into existence. The approach to perfection in the results bears a considerable relation to the quality of the parent material and when in possession of the very best of such material the first step is to set out toward some well defined end. This can only be done with a small degree of certainty as to what the results will be and then only after many time-taking changes in the line of procedure and when the final results are obtained, their analysis must be conducted with enthusiasm surpassed to almost the vanishing point.

"Color must be treated from a technical standpoint as also the extremely difficult process of color matching or determination. Form and texture defy standardization but their degree of excellence becomes easily recognizable. Size is not always synonymous with beauty, neither is it in all types desirable, nor should stems grow all tall or short, and so it should be. Dependability of bloom is more desirable than quantity although both are essential among variety characteristics and should be combined with a vigorous plant growth.

"Many other factors have been used in determining the acceptability of a new variety and among the most important of which is that outstanding feature, lack of similarity to other known varieties or complete newness in colorations, quite a difficult end to attain. This feature is probably most to be noticed in the new Gobelin Red, Penn Treaty, and Naiad Atlanta. The first two of these are now in use as starting points in new strains.

"Now to turn to the records. This work had its inception in 1919 but all of the results of this year's hybridizing have been discarded, as was also that of the following year. Of the remaining hybrids from 1921 the last 5 were discarded in 1925. The 1922 record shows that there are but 29 remaining from some 1355 seedlings, with none of these accepted and probably almost a complete removal of these this season. In 1923, 4521 seeds were planted. From these only 184 plants remain and only 9 of these have been named. In 1924, 1010 hand pollinations were made. From the seed of this year but 3457 plants remain, 1925-26 and 1927 have increased the plants to many thousands, all catalogued and indicated in the field under their parent names with dates of pollination seeding and blooming recorded, an endless task.

"Each succeeding year witnesses the removal of rejected hybrids from the beds in vast quantities so that the concentration upon the few remaining may be less impeded. From these remaining, the especially noticeable varieties, only 80 are now distinguished by name tags and of these at least 47 will never be introduced, being retained for hybridizing reasons and very probably over one-half of the remainder will never appear in public. From this data the intensity of the selection is evident as would also seem to be the quality of those selected for approval.

"The six permitted to appear at this time are"—

Bronze Sphynx (Danenhauer, 1929)

Price, \$10.00

Like a newly cast bronze sphynx.

Navajo X Daniel Lesueur No. 1. Height, 34 inches. Midseason. Seed, good; pollen, fair. Standard size, 2.1x3.0; Fall, 2.0x3.0.

Color—A large and beautiful ruffled yellow bronze.

A departure in the coloration in Iris combining the desired qualities of size with a marked generosity in the number of flowers carried on each stalk. The plant is a very healthy thing and thoroughly dependable. This hybrid is one of the first to be chosen from a vast gathering of carefully selected, hand-crossed hybrids.

Gobelin Red (Danenhauer, 1929). Price, \$20.00

"The Bievre ran red with their dye waste so it was called the river of the Gobelins."—Rabelais.

Medrano X Mons Brun No. 24. Height, 29 inches. Midseason. Seed, good; pollen, fair. Standard size, 2.0x2.9; Fall, 1.7x3.2.

Color—A genuinely red Iris. Standard, mineral red 1"m (Ridgway). Fall, deep velvety Victoria Lake, 1-n (Ridgway) and in all following.

Another absolutely new color.

This Iris is actually ox blood red, contrasting sharply with the known "red Iris" by reason of its complete lack of red purple in its makeup. It is being used as a founda-

tion on which to develop a race of fine reds and it is an outstanding thing of beauty in this garden. A bench has been placed under the apple tree near the original plant, by request.

The flowers are of medium size, but very finely formed and carried. The blooming period is unusually long. Stems and leaves are thin, strong and erect.

This variety alone is reward enough for ten years, effort to this end, and its selection represents the choice among a number of real red Iris.

Manon Lescaut (Danenhauer, 1929)

Price, \$10.00

"Manon Lescaut seemed gratified by the visible effect of her charm."—Abbe Prevost.

"Then here is Manon Lescaut more truly feminine than all the rest."—Guy de Maupassant.

Diadem X Diadem No. 8. Height, 38 inches. Midseason. Seed, good; pollen, good. Standard size, 2.2x3.0; Fall, 1.9x3.0.

Color—A symphony in yellow, brown, violet and white.

One of those indescribable things called plicata, but which are not. The standards are cream, delicately edged with violet, a fine line divides a cream white center, then a wider area overlaid with violet. The fall is much the same except for the unusual cream and purple beard. The flower is enriched with red brown colorings in the throat. The plant is very strong and develops rapidly carrying lavish bloom.

BRAND PEONY FARMS

Naiad Atlanta (Danhauer, 1929)

Price, \$15.00

Nymph of the Atlantic.

Midwest X Dream No. 1. Seed, very free; pollen, good. Height, 27 inches. Midseason. Standard size, 2.1x2.8; Fall size, 1.8x2.9.

Color—An entirely flesh pink effect with true pink standards. Standard, light Congo pink 7"d. Fall, Congo pink cast Argyle purple 65"b.

The very finest of our hybrids blooming in 1926 and highly rated by qualified visiting judges.

A beautiful flesh pink flower of medium size, carried at varying heights throughout the plant on strong, straight stalks of varying length, distributing the bloom throughout the plant in an effective manner.

The plant is foliated with straight leaves, its growth is vigorous and its stems carry a very large number of blooms.

After watching Naiad slowly unfold for the first time on the morning of May 26, 1926, the surprise and enthusiasm of a prominent visitor led him to offer a very substantial check for the original entire plant but it remained intact and is now available to all.

Orange Guidon (Danhauer, 1929)

Price, \$15.00

The guide flag (guidon) of orange.

Mme. Boulet X M. B. N. No. 2. Height, 31 inches. Midseason. Seed, good; pollen, good. Standard size, 1.7x2.7; Fall, 1.6x2.9.

Color—A warm toned orange Iris. Standard, light warm buff 17'd antimony yellow 17'b. Fall, between Buckthorn brown and ochre yellow 17'h.

This new coloring among the Iris causes the plant to stand out with striking contrast in a field of new and

meritorious blooms. The bloom is medium large, properly spaced and plentiful, carried well away from tall, straight stalks on 3-inch side branches:

The plant has no defects.

Penn Treaty (Danhauer, 1929) Price, \$20.00

"I have had occasion to be in council with them upon treaties for land and to adjust the terms of trade."—William Penn.

Ambassadeur X Souv. de Mme. Gaudichau No. 1-9. Height, 39 inches. Midseason. Seed, slow; pollen, good. Standard size, 2.1x3.3; Fall, 2.0x3.2.

Color—Rich deep velvet of blackish violet. Of perfect form and very thick texture. Standard, Dauphins violet 59'i. Fall, deep blackish violet 59-0.

A very heavy piece of construction throughout.

This hybrid has been considered the outstanding result of much painstaking and difficult breeding and has been received with such extreme comment that, while pleasing, renders it difficult of recording by the originator.

For vigor, mass and texture Penn Treaty stands alone. Its stalks are very noticeably thick and strong.

The appearance of this bloom in the garden made necessary the discarding of a number of series previously approved, all hybrids of very high quality. It is now being used in founding a new American strain of Iris which we know as the Penn Treaty Series, several of which have already proven to be of very high merit here.

Brand Peony Farms are the exclusive introducers of these wonderful new Irises. Orders should be placed early as stocks are limited in some varieties

Iris Collections

RECOMMENDED VARIETIES FOR BEGINNERS. Different varieties of Iris vary greatly in strength of constitution. Some will hold their own indefinitely; others live for a short time only and seem to be more susceptible to rot or are crowded out by the more vigorous growers. All the varieties that we list in our collections are especially hardy. Collection No. 1 has been selected from the good standard varieties that have done so well for us in our fields and that we can well recommend to all beginners. This list amounts to \$11.45 if purchased separately, but we offer the entire list for \$10.00.

Collection 1 for \$10.00, postpaid.

PINK

Afterglow
Dream
Mother of Pearl
Rose Unique

BLUE

Lord of June
Celeste
Gertrude
Massasoit
Zanardalia

WHITE

Florentine Alba
Ingeborg

REDDISH BRONZE

Fryer's Glory

REDDISH PURPLE

Ambassadeur
Caprice
Opera
Prospero
Violet Queen

DARK PURPLE

American Black Prince
Perfection
Rev. A. H. Wirtelle
Souv. De Mme. Gaudichau

YELLOW

Golden Plum
Kathryn Fryer
Sherwin Wright

VARIEGATED

Lorely
Ossian
Princess Victoria Louise
Rhein Nixe

BRAND PEONY FARMS

Collection 2 for \$5.00, postpaid.

There are many people who do not have sufficient room in their yards for a large number of any one kind of flower. Our collection 1 of Iris is a splendid one if you have room for the entire number. But to meet the needs of many who can not plant in large quantities, we are offering a portion of the above list for \$5.00.

PINK Mother of Pearl Rose Unique	DARK PURPLE American Black Prince Perfection	WHITE Florentine Alba
BLUE Massasoit Zanardalia	YELLOW Katherine Fryer	REDDISH BRONZE Fryer's Glory
	VARIEGATED Ossian Rhein Nixe Lorely	REDDISH PURPLE Ambassadeur Opera

Collection 3

We have in our fields a large stock of many of the good old varieties of iris. For a garden and landscape effect these are most excellent kinds. They are prolific bloomers and the twenty-six varieties in this collection offer a wide range of color. We have not placed these varieties in our general list for they have become cheap in price owing to the large stock of each in the country and we cannot afford to handle them as individual plants. We can save labor both in digging and in filling orders by selling them in a collection.

We offer the 26 kinds for \$5.00 postpaid.

WHITE Dorothea Ingeborg La Neige Mrs. H. Darwin	BLUE, LAVENDER and PURPLE SHADES E. C. Shaw Hiawatha Nokomis Gertrude Rev. Wirtelle Swatara Sylvia Lucas C. P. Connell American Black Prince Iroquois	PINK Queen of May Caprice
YELLOW Flavescens Golden Plume		VARIEGATED Lorely Ossian Navajo W. F. Christman
REDDISH BRONZE A. E. Kunderd Mithras Clarence Wedge A. M. Brand		

Special prices on smaller lots of any one of the varieties named in Collection 3.

Per 3 of one kind, 60c.

Per 6 of one kind, \$1.00.

Per 12 of one kind, \$2.00.

New Irises Seen on My Trip to the Washington Show

Returning from attending the National Peony Show held in Washington, D. C. this year (1929) where I had the pleasure of meeting Dr. Shull. I visited several northern gardens where the iris was still at its best and here I invariably saw many of the Shull varieties at their best. My impressions formed in these gardens as well as in my own lead me to believe that the Shull Productions are outstanding and that we need not look abroad further for future good irises. I noticed in particular Julia Marlowe, Tropic Seas, Morning Splendor, Coppersmith, and Sequoiah, the last named variety for garden effect being the outstanding flower seen on my trip.

I have also visited with the Sass Brothers of Nebraska, and Mr. C. C. Pfeiffer of our own state, during the blooming season and at both places have been shown wonderful new things of these men's productions all of which are of great beauty. Mr. Pfeiffer showed me his Ruth Pfeiffer which is very dainty and several other beautiful things in soft colors all of which took my eye. Sass Brothers', King Tut, Nebraska, Buta, Lona, Midwest and many others were very good.

All of these new irises if not in our list this year will be found offered by us another season.

Tulips

Giant Darwin Tulips

It is not necessary to use space in our catalog to describe the beauty of the tulip as this is a flower that is well known to all. We have had an increasing demand for the Darwin and Breeder Tulips for some years. To supply this demand we placed our order with a Holland firm for October first delivery. All of our orders for tulips will be sent out **postpaid** during the months of October and November. Orders should be placed early before stocks are broken.

Culture

Tulips should be planted in large beds or groups of a dozen or more of a kind in borders. They are also used as an edging to borders. We feel that it is a mistake to plant a mixture, as different varieties of tulips are not all of the same height and as a rule their colors do not harmonize. Plant bulbs about five inches apart and from four to five inches deep.

Baron de La Tonnage. 32 inches. Vivid pink margined blush. One of the leading bedding and forcing varieties. Keeps brightness to the last. 65c per doz.; \$4.25 per 100.

Bartigon. 28 inches. A large fiery crimson flower with bright scarlet margin. One of the best in its color. 65c per doz.; \$4.25 per 100.

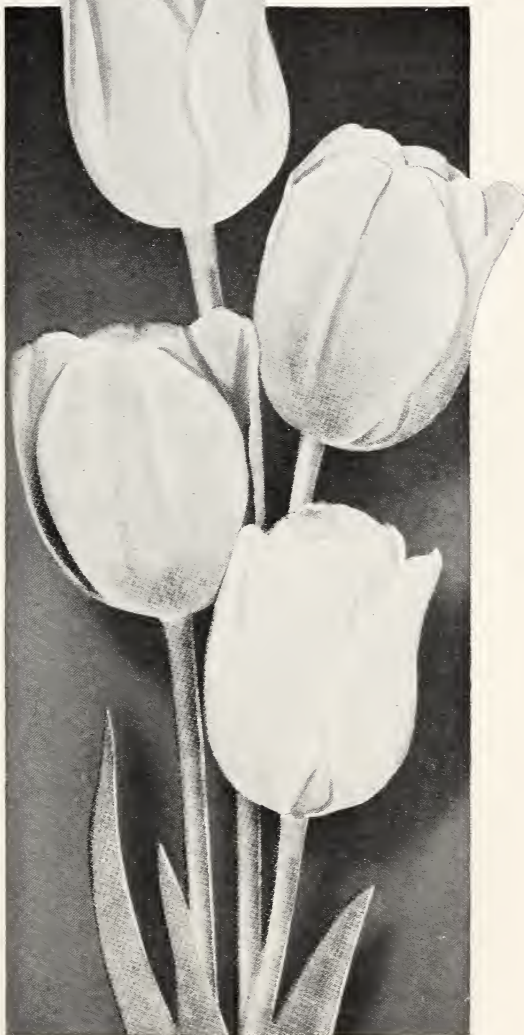
Clara Butt. 20 inches. A bright shrimp pink with lighter edges. Perfectly shaped blooms of great lasting qualities. The best pink Darwin. 60c per doz.; \$4.00 per 100.

Dream. 28 inches. Large cup-shaped flowers of heliotrope with silvery lilac margin; blue base. 65c per doz.; \$4.25 per 100.

Farnscombe Sanders. 25 inches. One of the choicest and most brilliant of the Darwins. A rich geranium-scarlet tinged with rose. 65c per doz.; \$4.00 per 100.

Gretchen. 23 inches. (Same as Margaret). Pale flesh-pink, changing to a light creamy pink or blush. Large egg shaped bloom. 65c per doz.; \$4.25 per 100.

Inglescombe Yellow. 20 inches. This is really a cottage tulip but often called the Yellow Darwin. A rich canary-yellow; a large globe shaped flower of beautiful appearance. One of the best of its color. The largest and earliest yellow tulip. 75c per doz.; \$4.50 per 100.



BRAND PEONY FARMS

La Tulipe Noire. 26 inches. (**The Black Tulip**). The blackest of all tulips; a large broad flower of glossy black. **90c per doz.; \$5.50 per 100.**

Mme. Krelage. 28 inches. A magnificent flower of purplish rose, broadly margined with blush pink. **75c per doz.; \$4.50 per 100.**

Massachusetts. 25 inches. Deep rose with petals distinctly banded with pale rose. Blooms long oval shaped held on strong erect stems. Early and keeps long after cut. **75c per doz.; \$4.50 per 100.**

Pride of Harlem. 30 inches. Bright rose carmine, with blue base. Great flowers of immense size. One of the very showiest of all. **65c per doz.; \$4.25 per 100.**

Reverend H. Ewbank. 28 inches. A vivid heliotrope-lilac, with lighter tint at margin. A most beautiful tulip to combine with Inglescombe Yellow. **75c per doz.; \$4.50 per 100.**

White Queen. 24 inches. Buds tinged with pink. Open flowers almost pure white. The best white Darwin for bedding and forcing. **75c per doz.; \$4.50 per 100.**

Breeder Tulips

We are offering a few varieties of the really choice Breeder Tulips in connection with our list of Darwins. We are doing this so as to offer colors which we cannot get in the Darwins. These varieties flower approximately at the same time as Darwins. They are often even taller, frequently exceeding a height of 40 inches. Their colors are exquisite and their blooms of immense size. Breeder tulips are very much in demand and as we placed our order with a Holland firm almost a year ahead we are able to offer these beautiful varieties at a very low price.

Bronze Queen. (Clio). 30 inches. Beautifully formed light bronze. The very best of its color. **85c per doz.; \$5.75 per 100.**

Medea. 30 inches. Crushed strawberry shaded heliotrope with yellow center. Very large. **75c per doz.; \$5.00 per 100.**

Panorama. 26 inches. Deep orange-red shaded mahogany. Large goblet-shaped, and very beautiful. **80c per doz.; \$5.00 per 100.**

St. James. 30 inches. A most beautiful tulip. Chestnut-brown flushed bronze gradually passing to gold at the margin. **85c per doz.; \$5.50 per 100.**

Velvet King (Dreadnaught). 26 inches. Very large flowers of a rich deep royal purple, held erect on stiff stems and lasting a long time **\$1.25 per doz.; \$7.00 per 100.**

Parrot Tulips

The Parrot Tulip is entirely different from any other variety. The flowers are thick petaled with long stems. Their petals are fringed and crinkled. The wonderful variation of colors makes this variety wonderfully interesting and ornamental. We offer a splendid mixture at 65c per dozen, \$4.00 per 100.

Improved French Lilacs



We are again offering for delivery this fall a very fine list of French Lilacs. The lilac is one of our hardiest shrubs. It is also one of the earliest shrubs to start in the spring. Because of this we strongly advise fall planting. By planting in the fall after the plants are well ripened up the shrub becomes thoroughly established before winter sets in. Then when spring comes it starts growth as it naturally would if it had never been disturbed, and many plants such as we send out will give bloom the first season.

Own root plants. The lilacs sent out are all of our own growing and are all guaranteed to be on their own roots. We have become thoroughly convinced that the **own root lilac** is the only lilac to plant. It is not practical to grow lilacs grafted on privet or common lilac as they do not give satisfaction. The production of own root lilacs is a much slower process than these other methods and this makes the price of such lilacs much higher, but we do not consider the lilac as otherwise propagated of any value so the higher priced own root lilacs are much the cheaper in the end.

Our list. We are listing this fall only a limited number of varieties as we do not have time in the fall to handle a long list. Every lilac in this list is a first class sort and to those who are not familiar with the named kinds we wish to say that you can choose any one variety listed and be sure of getting a good lilac.

Our entire lilac list. We are growing 163 different varieties of Improved Lilacs. As fast as a new lilac comes out we purchase it and begin to multiply it. Eventually we will offer from this great collection all the sorts which we consider desirable. But for this fall we will confine our list to the following desirable kinds. Next spring we will offer a much larger assortment.

WHITE VARIETIES

Ellen Wilmot. Double. A large bush with very stout limbs and large thick light green leaves. The flowers come in immense panicles of creamy white, made up of double florets almost twice the size of those of any other double white. In our estimation the greatest double white lilac and one of the three or four finest of all lilacs. Own root plants, 18 to 24 inches \$5.00.

Mme. Casimer Perrier. Double. Creamy white. This is a very thrifty growing variety that produces a profusion of large sized panicles of very double creamy white flowers. The bush is medium height, compact, with bright light green foliage. Own root plants, 2 to 3 ft. \$1.00. This is a splendid variety, but we have worked up a large stock, so we are making a special price. Everyone should plant one of these beautiful lilacs. Strong 2 to 3 ft. own root plants, \$1.00.

Marie Le Graye. Single. Pure creamy white. When this good single French Lilac first come to us it created a sensation. The panicles are very large and rather openly built. The individual petals and florets are very large. The plant is a young and profuse bloomer, often blooming as a two year old. It produces an immense quantity of bloom which sells very readily at a good price as a cut flower. Own root plants, 2 to 3 feet \$1.00.

Mme. Lemoine. Double. One of the best of the double whites. Bush grows a foot taller than that of Mme. Casimer Perrier and the bloom is a pure snow white without tinge of cream. Foliage dark green. Panicles large, long, erect; individual florets large. One of the very good dependable whites. Strong 2 to 3 ft. own root plants, \$2.00.

BRAND PEONY FARMS

BLUE VARIETIES

Alphonse Lavallo. Double. A tall robust growing variety that makes a very shapely bush. Panicles long, large, shapely, and compact. Opens an intense blue, but as the florets develop it changes into a beautiful shade of lilac. Splendid sort. Own root plants, 2 to 3 ft. \$3.00.

Monument Carnot. This is one of the greatest of all lilacs. The bush grows very tall with great heavy light green leaves. The panicles are of the greatest size from nine inches to a foot long. The florets are large and semi-double. A clear light blue of a most pleasing shade. The finest of all light blue lilacs. Our stock is limited. Own root plants, 2 to 3 ft. \$3.50.

President Grevey. Double. Light blue. In this variety the panicles are very double, symmetrical, of great size and pleasing appearance. The color is a clear soft delicate blue. President Grevey is one of the older sorts and still one of the most desirable of all varieties. Own root plants, 2 to 3 ft. \$2.00.

PINK VARIETIES

Senator Volland. Double, very floriferous. A very pretty lilac with a large bloom that is somewhat open. When in the bud the reverse of the petals shows a very distinct bright touching of pink which continues to show as the florets open and gives a very dainty effect to the bloom. Center of florets pinkish light lilac. Very dainty in its beauty. Strong own root plants, 2 to 3 ft. \$3.00.

William Robinson. Double. As a rule people like this variety unusually well, and always pick it out as one of the best. Panicle very compact and almost round. The bloom when the florets are just about to open gives a very striking pinkish red effect which gives place to a lavender as the florets open and their reverse side turns back. Very much admired. Own root plants, 2 to 3 ft. \$3.00.

RED VARIETIES

Charles Joly. Double. Purple red. Charles Joly is one of the very best of the double dark reds. Bush medium both in size and height with limbs growing very upright. Blooms rather large are held erect and make a very striking appearance as they show well above the foliage. Splendid double red. Own root plants, 2 to 3 ft. \$3.00.

Charles Tenth. Single. One of the most dependable of the single red lilacs. A very thrifty growing bush that begins blooming very young and produces large quantities of large nicely shaped panicles. Own root plants, 2 to 3 ft. \$1.00.

Ludwig Spaeth. Single. Dark reddish purple. This is one of the oldest varieties that we have among the better lilacs and it is still one of the most striking and best. Panicles very long, narrow and perfectly cylindrical. As the plant ages the bloom becomes profuse. Blossoms produced well on the outside of the foliage which makes it very showy. Mr. Root, of Springfield, Ohio, who has one of the finest collections of lilacs in this country, says of Souv. de Ludwig Spaeth. "Out of all my lilacs it is one of the very best." Own root plants, 2 to 3 ft. \$2.00.

LAVENDER VARIETIES

Charles Sargent. Double. Medium tall growing variety. Very shapely and vigorous plant. Color a beautiful light lavender. Very double flower with florets with long narrow pointed petals. Own root plants, 2 to 3 ft. \$3.00.



Lilac Charles Tenth

Improved Philadelphus

(Mock Orange or Sweet Syringa)

There has been wonderful improvement made of late years in that grand shrub, the Philadelphus, or as it is better known to us, the Sweet Syringa or Mock Orange.

The Lemoines of France, the same men who produced the most of our new Lilacs, are the ones who have produced these beautiful new Philadelphus.

The older varieties of Philadelphus are single. These new ones come in singles, semi-doubles and doubles. They are more beautiful than the older sorts in that their blooms are larger, are borne in greater profusion and of most exquisite form. These different Philadelphus may be selected as to their final growth in sizes to suit almost any want. Some varieties are real dwarf, others are of medium height, while still others grow into plants eight or ten feet high. The most of them are very sweet scented and often a single bush covered with its beautiful bloom will scent the air of an entire city block.



Philadelphus

Albatre. This is a very showy variety with large, dense panicles of double pure white flowers. The plant is compact, bushy, and of medium height. When fully grown this variety is about 5 feet high. **Strong 18 to 24 inch plants, 60 cents each.**

Avalanche. Five feet. Pure White. Grows into a very attractive bush about five feet high. Medium sized single florets literally cover the branches from top to bottom, making an absolute snow ball of the plant. The slender branches become so heavily laden with bloom that they bend over in all directions. We think this a very beautiful sort. **18 to 24 inch plants, 60 cents. Strong 2 to 3 ft. plants, 75 cents.**

Banniere. A tall shrub with long branches covered with a profusion of large semi-double snow white flowers. Extra fine and very early. The foliage is large and dark green. **18 to 24 inch plants, 75 cents each.**

Bouquet Blanc. This variety forms an upright, shapely bush with dark rich foliage. Flowers come in clusters, are large, pure white, and quite double. Very sweet scented. One of the hardiest and most dependable bloomers. Extra choice. **18 to 24 inch plants, 60c each.**

Dame Blanche. A very profuse blooming sort which produces large semi-double flowers that are a rich creamy white. The bush grows about four feet high, is very shapely, and works nicely into border planting, into hedge work, or as a single specimen. **18 to 24 inch plants, 60 cents each.**

Mt. Blanc. A tall growing variety that works wonderfully well into a hedge to grow on a line between lots. Flowers large, pure white, and semi-double. Produced in wonderful profusion. One of the most prolific bloomers of all. **18 to 24 inch plants, 60 cents each.**

Norma. A strong growing variety that reaches a height of 8 feet. If it could be said that any one of these wonderful Philadelphus was more beautiful than the others, it would in our estimation be said of Norma. The flowers are of great size, single, with a rich waxy like appearance. **18 to 24 inch plants, 60 cents each.**

Ophelia. A rather dense growing bush with long branches that arch gracefully under their great loads of bloom. The flowers are of medium size and run from semi-double to full double. Pure white with crinkled petals. Grows about four feet high. **Strong 18 to 24 inch plants, 60 cents each.**

Pyramidal. A very nice shrub that takes up but very little space because of its narrow upright growth. Nice to plant in corners about the house. Blooms large, semi-double, pure white, and very fragrant. Grows about four feet high. **18 to 24 inch plants, 60c each.**

Virginal. Double. White. Everblooming. Taken all in all, this is the most sensational of all the Philadelphus. In fact, we think it the most valuable acquisition to the flower garden made in recent years. The bush is a moderately strong grower, with us attaining a height of between six and seven feet. Rather of an open sparsely foliated plant which permits its wonderful blooms to be all the better displayed. Flowers pure white, double and often two inches in diameter. Begins to bloom about June 15 with us and gives a heavy crop of bloom for about three weeks. Then it rests a few weeks and then starts to bloom again and keeps it up with a small amount of bloom until frost. **Strong 2 to 3 ft. plants, \$1.00 each; 3 to 4 ft. \$1.25 each.**

Special Philadelphus Offer of Six for \$3.50

Albatre	18 to 24 inch.....	\$0.60	Pyramidal	18 to 24 inch.....	\$0.60
Avalanche	18 to 24 inch.....	.60	Virginal	18 to 24 inch.....	1.00
Bouquet Blanc	18 to 24 inch.....	.60			
Norma	18 to 24 inch.....	.60			
					\$4.00

Hardy Perennial Phlox

Phlox are one of the most useful of all flowers for summer decoration. They range in color from pure white to the richest crimson with their most taking colors in the different shades of pink. Phlox can be planted in both spring and fall. Either season is desirable. If planted in the fall, planting should be during October, but not earlier. They demand a rich soil. Manure the ground well ahead of time, where you intend to plant phlox with well rotted manure well worked into the ground. After planting soak the ground well with water. Water heavily during dry spells. Phlox demand very little attention after planting but should be renewed about every five years.

We are offering a splendid list of varieties. We have tested them all out to see whether they are desirable or not and have discarded every undesirable sort. We offer 24 varieties of absolutely first class phlox.

NOTE—When you order phlox from us you get a real Brand Peony Farms plant. Our phlox plants are of the same quality as our Brand Division peony roots.

Do not compare our prices for our phlox plants with cheaper prices where orders are filled with plants commonly called Baby Phlox Plants.

Prices For Phlox, All Postpaid:

It is impossible for us to fill orders for phlox calling for one of a kind except when sold in collections. We are offering two equally good collections, 12 distinct varieties in each one, at \$3.00.

You may order

- 3 phlox of any one variety for \$1.10
- 6 phlox of any one variety for \$1.75
- 12 phlox of any one variety for \$3.00

COLLECTION 1

Eclairer. A purplish crimson with white aureole. One of the phlox that seldom kills out.

Europe. A large beautifully formed flower with great white florets with earmine eye.

Elizabeth Campbell. A very large, soft, even, salmon pink with distinct lighter halo. One of the most sought after of all.

Frau Von Lassberg. The purest snow white in cultivation; large open truss; wonderful cut flower.

Grideur. A white with a deep rose center; petals beautifully flushed with bright rose pink; florets large; plant heavily branched.

R. P. Struthers. Rosy earmine with claret eye. Wonderful variety as it stands up so well in hot sun.

Rynstrom. Very large trusses of rosy-pink flowers.

Siebold. Orange scarlet with red eye. Very thrifty, profuse bloomer.

Thor. Great trusses and immense florets. Deep salmon pink with aniline red eye. A charming variety.

Von Hochberg. A medium tall growing, very thrifty sort. Deep brilliant red.

Widar. Very large individual florets of lavender purple with large white center. Large panicles; very attractive.

Wm. Ramsey. A deep reddish purple. The best phlox of its color.



BRAND PEONY FARMS

COLLECTION 2

Baron Von Dedem. Bright orange-scarlet with trusses and individual flowers of immense size.

Beacon. A fine brilliant bright cherry red. Trusses of most beautiful form.

Champs Elyees. Very large trusses and florets in a most pleasing dark purple.

Ferdinand Cortez. A most pleasing deep rose-pink with salmon shadings towards the center.

Independence. A white with compact panicles; tall; good to use in outer border.

Jules Sandeau. A very large flowering pure pink. One of the finest.

Milly Von Hoboken. A pure soft pink self color. Grows tall, thrifty and branching. Large well shaped flowers. A splendid new one.

Pantheon. A clear deep carmine-pink with a faint halo. One of the varieties that can be depended on.

Prof. Virchow. A bright carmine suffused with brilliant orange-scarlet. Very striking.

Prime Minister. A tall white with a crimson center. A very strong robust grower.

Special French. A wonderful blush pink with a salmon eye. A profuse blooming attractive new phlox with immense trusses.

W. C. Egan. A most delicate lilac-pink with a distinct solferino red eye. Very dainty.

Oriental Poppy

The Oriental Poppy is a well-known perennial and for gorgeous coloring it has few rivals among hardy plants.

The best time to plant is during the latter part of August and September when the plants are dormant. Almost any soil is adapted to the Oriental Poppy but a deep rich loam is the best. The roots should be planted so that the crown is just covered and a mulch should be applied just after the ground freezes.

Cerese Beauty. Very profuse bloomer, color a clear, soft cerese pink.

Empress of India. Very large, intense deep red. Petals of deep substance.

Orange Queen. A brilliant variety of good size and most attractive color which is a brilliant deep orange.

Princess Victoria Louise. Large flowers, soft lilac rose. One of the finest named sorts. Beautiful color. 2 strong roots, \$1.50 postpaid.

One each of the above Oriental Poppies for \$2.75 postpaid.

No orders received for Oriental Poppies after October 1st.

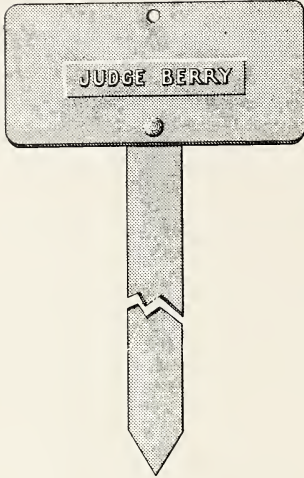
The Washington Show

The 1929 National Peony Show was held this year at Washington, D. C. It was a great success. The show was staged in the large ball room of the Willard Hotel on the tenth floor. Due to the lateness of the season all of the flowers, which by the way were shown with few exceptions by growers within one hundred miles of Washington, were out of storage. Both dry storage and wet storage were used and flowers stored both ways came out in wonderful shape.

I will not attempt to give the winners of the prizes as I did not have time to get a complete list and so will not attempt it, only saying that Dr. White of Washington took first in class 1. Mr. Geo. Peyton of Rapidan, Va., had a wonderful exhibit of Singles and Japanese. Best flower in the show was awarded to a fine specimen of Touranzelle. The award lay between Milton Hill, Judge Berry, and Touranzelle, finally going to Touranzelle.

A. M. BRAND.

Peony Markers



Marker No. 1
BLOOM-ADE MARKER

This marker is made of galvanized steel, painted dark green like the Bloom-Ade support. It stands three feet out of the ground. By referring to the cut you will see that this marker consists of two parts, the standard and the marker container. The marker container is $2\frac{1}{2}$ by 5

With markers, the same as supports, we find many on the market, many of which possess desirable features. This marker, No. 1, is made of galvanized iron about 18 inches in length, one-eighth of an inch in thickness and three-quarters of an inch in width. Securely riveted to the top of this strip is a piece of the same material of about one-half the thickness, two by four inches in diameter. On this piece there is soldered a strip of brass with the name of the peony embossed in letters, plainly readable, a quarter of an inch in height. These markers are made up in the winter for us and are not always ready to ship immediately. We have a large number of these on hand ready for immediate shipment at 30 cents each. Place your order with us and if we do not have them on hand, we will have them made up for you.



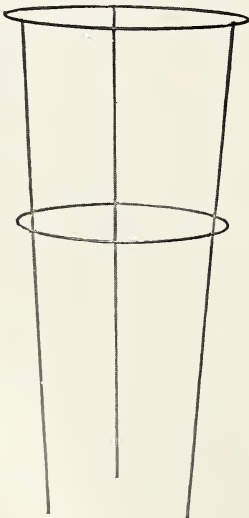
Bloom-Ade Marker

inches. This is made of metal having a transparent weather proof front which protects the name and record of the plant from the elements. This is a very neat, attractive, and serviceable marker. Ready to ship at all times at 25 cents each. The Bloom-Ade Peony Support carries the same marker without the standard.

Peony Supports

Every peony grower has felt the need of protecting his plants from damage by wind and rain and thus preserving their beauty throughout the entire blooming season. We are handling two different peony supports which will hold the plant erect and keep the flowers off the ground.

THE ADAMS SUPPORT



This support is made of No. 6 galvanized wire that will not rust. They are very substantial and with ordinary care, they should last many years. If they are ordered ahead of time they can be sent by freight, which makes the carriage charges very reasonable.

Special 6 Gauge,
24 inch tops, 80
cents each.

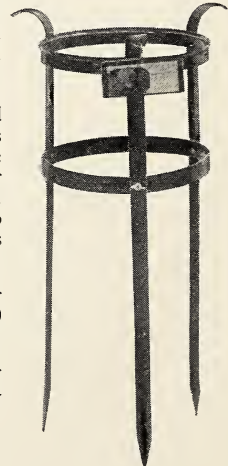
Shipped by freight
or express, F. O. B.,
Faribault.

THE BLOOM-ADE SUPPORT WITH MARKER ATTACHED

This support is made of galvanized steel and nicely painted dark green. It is collapsible and can be put together without tools in a few minutes. It is good looking and very serviceable. This support as you will see carries a splendid water proof marker with it. It is a real ornament to the garden. For peonies we recommend Size 16.

Size 16, with marker
attached, \$1.05 or \$12.00
per dozen.

Shipped by freight or
express, F. O. B., Faribault.



RULES OF BUSINESS

Many mistakes will be avoided if you read this page carefully before making out your order.

Our Guarantee. We guarantee our stock to be true to name. Should a mistake occur and a customer receive a root that eventually proves not true to name, we will replace this root with one that is true and the customer may retain the root first received. We fill all orders personally and we take great pride in sending out satisfactory roots. After you receive our shipment, we want you to report at once anything that is not satisfactory and we will make proper adjustment. After your roots are planted, we cannot assume further responsibility for them.

Prices and Discounts. We offer a discount to those who send cash with their order. Do not take a discount on our new varieties that are listed at \$50.00 each. Neither should you take a discount on Irises as we make a special price when three roots of one variety are ordered. No discount should be taken on collections of peonies as our offer is below our regular prices. Except for Iris and Collections of peonies, you may select \$11.00 worth of roots for \$10.00; \$27.50 worth for \$25.00; \$57.50 worth for \$50.00; and \$120.00 worth for \$100.00. You will note that we do not offer to pay transportation either by post or express, but these discounts that we offer will more than pay the transportation charges.

How to Remit. Make remittances by either Post Office Money Order, Bank Draft, Registered Letter, or Personal Check payable to the **Brand Peony Farms, Inc.** Address your letter to **Brand Peony Farms, Inc.**, Box 408, Faribault, Minnesota.

Transportation. We do not pay transportation charges either by parcel post or express unless so stated. Orders of from one to six plants can generally be shipped cheaper by post than by express. If your order calls for one or two roots, remit twenty-five cents for postage and boxing. If more than two roots are ordered, allow ten cents per root if you wish post shipment. Otherwise we will send your order by express.

Substitutions. We do not substitute without permission. If you send in an order late in the season, it often saves delay in shipping if you give us permission to substitute if we are unable to supply all the stock your order calls for. If the choice is left to us, we will use a variety of equal or better value of the same color.

Special Delivery Letters. Although our office is located almost a mile from the Post Office, we call for our mail four or five times each day. Special Delivery Letters are placed in our box and not delivered to our office. Consequently the price of a special delivery stamp is wasted on letters sent to us.

How to Address Us. In writing to us be sure that you address your letter to the **Brand Peony Farms, Inc.**, Box 408, Faribault, Minnesota. There are other companies here with the word Brand in their name, but we are the only peony company. In order for mail to reach us without any delay you should address us properly.

BRAND PEONY FARMS, Inc.

Box 408—FARIBAULT, MINN.

