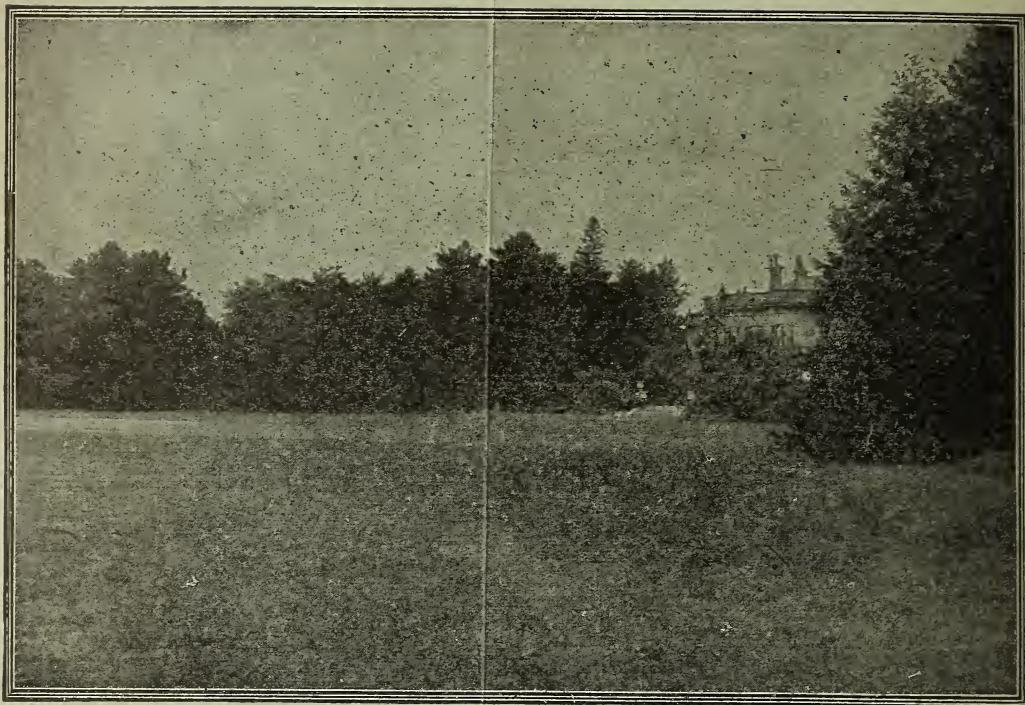


## **Historic, Archive Document**

Do not assume content reflects current scientific knowledge, policies, or practices.







## Wood, Stubbs & Co.'s Celebrated Blue Ribbon Lawn Grass Seeds

For Various Soils, Climates, and Locations.

Sow in August, September, and October. One quart to 250 square feet (12 x 25); 4 bushels per acre.

Used and Endorsed in all Sections of America as the **FINEST QUALITY** and **MOST SATISFACTORY** in Results for Small or Large Lawns, Tennis Courts, Golf Links, Parks, Cemeteries, etc., producing short, velvety green turf in 6 to 8 weeks which is of permanent lasting qualities.

**BLUE RIBBON EVERGREEN.** For northern and middle latitudes, this has been found the most satisfactory lawn grass seed that has ever been used. It is far better than the Kentucky Blue, producing a beautiful green sward in quicker time, is better adapted to various soils and stands heat, drought of summer as well as severe cold, better than any of the various mixtures so commonly offered.

Whether for large or small plot, Blue Ribbon Evergreen Lawn Grass Seed will prove entirely satisfactory, and we believe it the best lawn grass seed offered anywhere. It weighs 20 pounds per bushel, where ordinary mixtures are only 14 pounds, therefore is more economical.

**PRICES.**—Postage paid—Pint 15c; Quart 25c; 4 Quarts 90c.

Without Postage—Pint 10c; Quart 20c; 4 Quarts 65c; Peck (5 lbs.) \$1.25; Bushel (20 lbs.) \$4.00; 5 bushels and over at \$3.50 per bushel.

**SHADY GREEN LAWN GRASS.** A special lawn grass seed for damp or shady situations, composed of the best growing, velvety green grasses. We have excellent reports from satisfied customers using this, and recommend it to be as satisfactory as anything which can be used for such locations.

**PRICES.**—Postage paid—Pint 20c; Quart 35c; 4 Quarts \$1.25.

Without Postage—Pint 15c; Quart 30c; 4 Quarts \$1.00; Peck \$1.75; Bu. \$6.00.  
**DIXIE VELVET LAWN GRASS.** For the far South and dry Western States this is particularly recommended. It is a combination of short, thick-growing grasses with Bermuda grass, and affords a velvety green sod the year around. Splendid for terraces facing southward, where other sorts burn out.

**PRICES.**—Postage paid—Pint 20c; Quart 35c; 4 Quarts \$1.25.

Without Postage—Pint 15c; Quart 30c; 4 Quarts \$1.00; Peck \$1.75; Bu. \$6.00.



# Seed Wheat

## Blue Ribbon Select Stocks

The price of cleaned seed wheat naturally changes with the market conditions. Our stocks are all thoroughly cleaned and sacked in even weight striped burlap bags hand sewed. We think we have the best facilities for handling and cleaning seed wheat in the South and we do not think equal stocks can be secured from any other source. Our wheat crop this year turned out very heavy yields and quality exceptionally good. We have numerous reports from our growers telling us of yields from twenty to thirty-five bushels per acre. At the same time we have noticed that wheat sown in corn land has invariably yielded less than that sown elsewhere.

We shall endeavor to fill all orders for seed wheat with the very finest stocks which we have personally selected and will give the same our very best attention. Our stocks were practically all examined in the fields while growing so as to get the type as pure as possible and free from other grains. We will gladly mail samples and quote special prices on large lots.

**HARVEST KING (Smooth).** A very popular large yielding sort, producing very long heavy heads, well filled of finest quality long grain resembling bearded. It has been largely sown in all sections and is especially adapted for medium or high land, yields usually better than any other smooth head sort. It sometimes shatters a little at harvest if very ripe, but this is not particularly objectionable. **Northern grown stock.** Price, per bu. \$1.25; 10 bus. \$1.20; 25 bus. and over, \$1.15; 2½ bu. burlap bags 12c extra.

**FULTZO MEDITERRANEAN (Smooth).** Specially fine on rich loamy soils and very popular in this country. Stands up well, does not shatter easily and on rich soils yields more largely than Fultz. Per bu. \$1.25; 10 bus. \$1.20; 25 bus. and over, \$1.15 per bu.; 2½ bu. burlap bags 12c each extra.

**FULTZ (Smooth).** Well known, popular and one of the best short berry smooth wheats ever introduced. Grain yellow cast, short, plump, well filled and good milling wheat. Heads long, slim, fills out well, and is especially well adapted to high land of good quality. We have some Indiana stock and some from Missouri which has been carefully selected for purity. Price, per bu. \$1.25; 10 bus. \$1.20; 25 bus. and over \$1.15; 2½ bu. burlap bags 12c extra.



Harvest King Wheat.

South Christian County, Ky., May 31, 1913.

For the past four years I have bought seed wheat from our Seedsmen, Wood, Stubbs & Co., and I find that the cleaning done by this firm is so far superior to any I can do or is done hereabouts and that I save not only the work of cleaning, but that one bushel per acre is plenty of seed, and the saving in seed more than compensates for the difference in price and freight saying nothing about improved varieties and change of localities. Wheat sown one bushel per acre of this seed has yielded 30 to 40 bushels per acre, and sold for seed at 25 cents per bushel advance. I have wheat now seeded one bushel per acre, splendid stand and as high as my chin and promises a greater crop than others sown equally as carefully every way and sown 48 quarts per acre.

CHAS. E. BARKER.

**POOLE (Smooth).** A favorite sort in Indiana, Illinois, and Kentucky. The grain is large, pointed at both ends; somewhat longer than Fultz and about the same quality and texture. It is especially adapted to flat ground and rich soils, does not lodge easily, and this season has proven one of the best of all smooth sorts. Our stock of this is Indiana grown, bought direct for us from one of the largest yielding crops in that section. Price \$1.25 per bushel; 10 bushels at \$1.20; 25 bushels and over at \$1.15 per bushel. New grain bags, holding 2½ bushels, each 12c extra.

**FULCASTER (Bearded).** This very popular bearded variety, as its name indicates, is a cross of Fultz and Lancaster varieties. It is one of the most reliable, both as regards yield and quality. Heads of good length, grain long, very hard and producing flour of the finest quality. Straw stiff and has great power to resist rust which makes it especially valuable in river bottoms and localities liable to be attacked by rust. Price \$1.25 per bushel; 10 bus. at \$1.20; 25 bushels and over at \$1.15 per bu. New grain bags 12c extra.

**AMERICA (Bearded).** This comparatively new variety of bearded wheat has developed in a very short time into the most popular of any of the bearded sorts. We have reports of its yielding heavier than any other smooth or bearded varieties. Some growers report yields of thirty to forty bushels per acre on corn land. It has a large grain of good color, stiff straw capable of holding a very heavy head. One grower reports a very heavy yield of straw producing almost one and one-half to two tons per acre. It stands the winter well and stools considerably, shooting up half again as many grain stock as the other varieties. We strongly recommend it for poor or upland soils.

Price, \$1.35 per bushel; 10 bushels at \$1.30; 25 bushels at \$1.25 per bushel. New grain bags 12c extra.

---

Lincoln County, September 18, 1912.

If you remember I bought 60 bushels Harvest King seed wheat from you last fall at the State Fair. It proved to be fine. I made an average of 30 bushels per acre. So now I want you to ship my son-in-law 20 bushels of the same kind.

J. D. EADS.

---

## Choice Northern Seed Rye.

This crop is largely used all over the southern and middle latitudes for winter pasturage, early green pasture and for soil improving as well as for grain. It is sown extensively here for soiling purposes. If sown early it stools considerably thereby preventing the soil from leaching and washing to any great extent. It is used also by many as a cover crop. We recommend it especially for late planting as it is practically the only crop that will stand when sown late and shoot early in the spring. This crop can be successfully sown as early as July and as late as December. Our stock of this is extra fine re-cleaned Northern grown. Sow 1¼ to 2 bushels per acre. Present prices, per bushel 85c; 10 bushels and over 82c; 25 bushel lots 80c; bags (2½ bushel) each 10c extra. Special prices on large lots.

---

## Winter Barley.

**CHOICE SOUTHERN GROWN.** This is a very popular crop in many sections of Kentucky and the South; it is free from attacks of rust or fly, and yields one-fourth to one-third bushels more per acre than wheat. It stools out and makes fine fall and winter grazing. Is very nutritious green feed or can be cut for hay before the grain ripens. The grain is useful for feeding all kinds of stock, or is a profitable crop for selling on the market. Far richer as green food or soiling than Rye.

Sow at the rate of 1 to 1½ bushels per acre, September, October, or November. Present price, per bushel. 80c; 10 bush. and over 75c; bags included. Special prices in large quantities.

## WINTER TURF OATS.

Produce Enormous Yields of the Finest Quality Oats. Afford splendid Fall and Winter Grazing. Becoming more popular each year.

Winter Turf Oats sown early are as hardy as wheat. When sown early they furnish excellent grazing during the fall and winter months, and this can be kept up, even until the first of March, when, if cattle are taken off, they will produce enormous yield of grain. Some of our customers claim that this winter grazing does not affect them in yield at all. To large intending purchasers we will gladly submit samples of Winter Turf Oats, and we wish them to make careful examination of the husk and grain. The grain is one and one-half times as large as ordinary spring oats, husk very thin so that virtually the whole grain is meat, and this means 20 to 25 per cent superior value for feeding. The straw is fine quality, not too stiff, and they make excellent sheaf oats as well as for threshing.

**FALL SEEDING.** Sow broadcast or in drills  $1\frac{1}{2}$  to 2 bush. to the acre. In this section in August or early September is best, further south and in Virginia as late as October.

**PRICES OF WINTER TURF OATS**, like other grain, are constantly fluctuating, and price given here is at the time this catalogue is published. We will take pleasure in quoting current lowest prices in large quantities at any time.

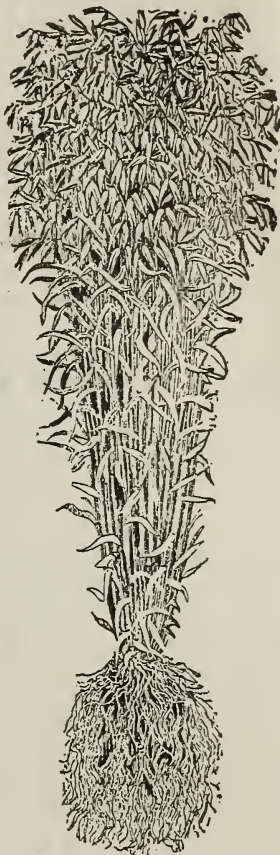
**Present Price, Blue Ribbon Brand Recleaned**, per bush. 85c; 10 bush. and over 83c per bush. Winter Turf Oats without recleaning, per bush. 80c; 10 bush. and over 78c per bush. Bags included. Special quotations on large quantities.

**CAUTION.** We advise the purchase of our **Blue Ribbon Brand Recleaned Winter Turf Oats**. There is always more or less cheat in Winter Turf Oats that are not recleaned.

Greenville County, Tenn., February 1, 1913.

I have been purchasing a quantity of field and garden seeds from you, and they have proven all you claim for them. The Winter Turf oats are the best oats for this climate, and always make a good crop.

NEWTON MYERS.



## DWARF ESSEX RAPE.

Costs Little to Sow. Yields Splendid Pasture. Fine Soil Improver.

One of the most satisfactory quick-growing crops for cattle, sheep, and hogs, affording in from six to eight weeks from sowing excellent pasture, beside being a splendid soil improver. Rape has a high feeding value. It is excellent for fattening sheep and swine, produces an abundant flow of milk in cows and is the ideal pasture for weaning lambs. Its value as sheep pasture has been demonstrated in every State in the Union, and it is recommended by authorities everywhere as of superior value for hogs, furnishing the finest pasturage, or can be fed after cutting. Rape grows on any kind of soil, and has strong growing roots which penetrate the ground for a considerable depth.

**Sowing.** Rape can be sown from July until October, and can be sown either broadcast or in drills from 4 to 6 lbs. per acre. If sown between corn after the last working, 3 to 4 lbs. is sufficient.

**Price**, per lb. 10c; 10 lbs @ 7c per lb.; 100 lbs. \$6.00. Bags holding 100 lbs. 22c each extra.



# Blue Ribbon Grass and Clover Seeds for Fall Sowing



We strongly urge more extended sowing of Grass and Clover Seeds in the fall instead of spring seeding. The chances of winter freezing are hardly as great if seed is sown early as the danger of spring sown grass and clover seed being killed by the drought of summer. Then if sown in fall a good crop of hay and pasturage can be obtained the following season while if sown in the spring a whole year is wasted.

**Sowing.**—Prepare the ground thoroughly, and have the top soil in the finest mechanical condition. We strongly recommend that the grass be sown alone, and not with a grain crop, as a better stand is attained and more profitable results.

The best time for sowing in the fall is in August, September, or October. If in the spring, February, March, or April. Covering should be done with a roller or light harrow. Do not sow too little seed to the acre, always use the best quality that can be obtained.

**Market Changes.** Grass, Grain, and Clover Seeds, etc., are constantly changing, and the prices given here are those ruling at the time this catalogue was published (August 11th). All orders will be filled at lowest prices when they are received, or we will take pleasure in quoting special prices at any time.

## Blue Ribbon Grass and Clover Seed Mixtures

For Hay and Permanent Pasture on Various Soils. Prices based on the Market Prices for Grass Seed on August 11th. Where large quantities are wanted, please write for Special Prices.

25 lbs. and over at the 100-lb. rate.

**MIXTURE No. 1. For Light Sandy or Loamy Soil.**      **MIXTURE No. 3. For Heavy Loam or Clay, or Bottom Lands.**

Creeping Bent Grass	Tall Oat Grass	Timothy	Alsike Clover
Orchard Grass	Hungarian Brome	Red Top, Fancy	Mammoth Clover
Fancy Red Top	Sheep Fescue	Meadow Fescue	
White Clover	Red Clover		

Sow 20 pounds per acre.

Price, per lb. 25c; 20 lbs. \$3.50; 100 lbs. \$17.00.      Price, per lb. 20c; 18 lbs. \$2.50; 100 lbs. \$12.50.

**MIXTURE No. 2. For Limestone, Stiff, or Loamy Upland Soils.**      **MIXTURE No. 4. For Wet Bottom Land Subject to Overflow.**

Orchard Grass	Tall Oat Grass	English Blue	Mammoth Clover
Kentucky Blue Grass	Red Top, Fancy	Red Top, Fancy	Italian Rye
Perennial Rye	Red Clover	Rough Stalk Meadow	

Sow 25 pounds per acre.      Sow 25 pounds per acre.

Price, per lb. 20c; 25 lbs. \$3.85; 100 lbs. \$14.50.      Price, per lb. 20c; 25 lbs. \$3.50; 100 lbs. \$13.50.

**MIXTURE No. 5. Especially for the South on any soil, withstanding hot, dry weather.**

Bermuda Grass, Fancy Red Top, English Blue, Tall Oat Grass.

Sow 15 pounds per acre. Price, per lb. 30c; 15 lbs. \$3.40; 100 lbs. \$22.00.

Hay is a short crop this season and prices are high. Sow grass seeds this fall and cut a good crop of hay next summer, which will undoubtedly bring high prices.

All grass seeds are reasonable this year. Don't practice false economy by buying cheap seeds. **Blue Ribbon Seeds** should be your standard quality.

We cheerfully advise, when requested, concerning crops, soils, conditions, etc. Write us freely. If our experience will assist you, it's yours for the asking.

We maintain a laboratory for testing for purity and germination of all seeds we sell. Percentage will be given on anything when requested.



# General List of Grass Seeds.

**ORCHARD GRASS** (*Dactylis Glomerata*). One of the best of all grasses for upland, loamy, or moderately stiff soils, producing most excellent hay if cut when in bloom, and affords probably more pasture than any other grass. Grows three to five feet in height, is ready to cut three weeks ahead of Timothy, not exhaustive to the soil, and produces 2 to 3 tons of fine, nutritious palatable hay. It has a tendency to grow in clumps or stools if not sown thickly, therefore, if alone, should be sown  $1\frac{1}{2}$  to 2 bushels per acre. It does finely in mixtures with other grasses as suggested in our No. 2 Mixture, page 6. The crop is very short this year, and subject to changes. Present price, **Blue Ribbon Brand**, per pound 20c; per bushel (14 lbs.) \$1.80; 5 bushels and over \$1.75. Write for prices in large quantities.



Orchard Grass.

**TALL OAT GRASS** (*Avena Elatior*). Called Evergreen in some sections. A splendid grass, ripening about the same time as Orchard, makes thick, luxuriant growth of excellent hay, and splendid for grazing. Suitable to the same soils as Orchard, growing 3 to 5 feet in height, but covers the ground better. Most excellent for sowing alone, or in mixtures, as suggested in our No. 1 and No. 2 Mixtures. Present price, **Blue Ribbon Brand**, best grade, per pound 20c; per bushel (11 lbs.) \$1.50; 5 bushels and over \$1.45 per bushel. Write for prices in large quantities.

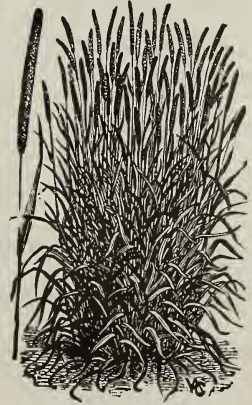


Tall Oat Grass.

**KENTUCKY BLUE GRASS** (*Poa Pratensis*). Well known in nearly all sections, and one of the most profitable of all grasses for pasture. Succeeds well on any good, moderately well drained soil in Central and Northern sections. Suitable for lawns or permanent pastures, but not for hay. If sown alone, use 2 to 3 bushels per acre for pasture, 4 to 5 bushels for lawn purposes. Crop very short this year. Present price, **Blue Ribbon Brand**, per pound 20c; per bushel (14 lbs.) \$1.75; 5 bushels and over \$1.70 per bushel. Current prices on request.

**TIMOTHY** (*Phleum Pratense*). Well known in all sections, producing the standard hay of the United States. In this section Timothy is best suited to bottom lands not subject to overflow and tenacious rich soils. Good, ordinary yields are  $1\frac{1}{2}$  to 2 tons per acre. Not suitable for grazing, and if a meadow is desired to be pastured, it is better to use a combination of Timothy, Meadow Fescue, Fancy Red Top, and Alsike Clover as suggested in our No. 3 Mixture. If sown alone, one peck per acre. Crop short this season. Our **Blue Ribbon Brand** of Timothy is especially selected from heavy, well matured seed of good germination. Present price, **Blue Ribbon Brand**, per pound 10c; per bushel (45 lbs.) \$2.75; 5 bu. lots \$2.70 per bushel; bags 22c each extra. Current prices on request.

**RED TOP OR HERDS GRASS** (*Agrostis Vulgaris*). One of the most suitable of all grasses for stiff, low, wet, and very tenacious soils, producing fine quality hay where the land is rich, and one of the best grasses for soils of nearly all kinds for pasture. Should be used in our mixtures for this purpose, and is most excellent for sowing with Kentucky Blue Grass for both lawns and pastures. Owing to short crop and high prices of grasses, we strongly recommend Red Top this season for general use, as it is one of the cheapest priced seeds, especially for pasture. We offer two qualities: **Blue Ribbon Brand Fancy Re-cleaned** (sow 8 lbs. per acre), per pound 20c; 25 lbs. 18c per pound; 100 lbs. 17c, bags 22c each, extra. Choice unhulled (sow 12 lbs. per acre), per 100 lbs. \$10.00, bags included. Market very unsettled.



Timothy.

**ENGLISH BLUE GRASS (Meadow Fescue or Randall Grass) (Festuca Pratensis).**

An exceedingly valuable grass for both hay and pasture but preferably used in mixtures. It remains green practically all of the year, and especially so in winter when snow is on the ground. If sown alone for hay or pasture 1½ bushels per acre are required. We suggest a combination similar to our No. 2 and No. 3 Mixtures as being better for general uses.

Crop extremely short and high this season. Per pound, Blue Ribbon Brand 15c; per bushel (24 lbs.) \$2.40. Bags included. Current prices on request.

**ITALIAN RYE GRASS (Lolium Italicum).**

Particularly adaptable where quick growth of hay is wanted, and more suitable to moist lands. Fine either alone or in mixtures. If sown alone or with Red Clover two to three bushels per acre, in mixtures one half to one bushel per acre. Per pound 15c; per bushel (14 lbs.) \$1.10; 5 bu. and over \$1.00. Bags included.

**PERENNIAL RYE GRASS (Lolium Perenne).**

One of the standard grasses for hay and pasture in Europe and produces excellent crops in this section both for hay and pasture. Starts very early, is of vigorous growth, succulent and nutritious and especially valuable in mixtures for hay or pasture. If sown alone 2 to 3 bushels per acre; in mixtures 8 to 10 pounds. Per pound 15c; per bushel (14 lbs.) \$1.10; 5 bu. and over \$1.00 per bushel. Bags included.

**HUNGARIAN BROME GRASS (Bromus Inermis).**

Called Awnless or Smooth Brome Grass. Introduced from Hungary, Europe, by the U. S. Dept. of Agriculture, and has been extensively sown in many sections. Particularly adapted to rather poor, dry soils which are not suitable to other grasses, and is useful for both grazing and hay, especially in mixture with other grasses. Sow from 2 to 3 bushels to the acre either in spring or fall. Per lb. 15c; bu. (14 lbs.) \$1.50.

**CREEPING BENT GRASS (Agrostis Stolonifera).**

Also called Florin and Bent Grass. This grass is highly esteemed in many sections for pasture, and is especially valuable where fine close thick turf is desired. The creeping, stoloniferous roots render it exceedingly well adapted to tramping, hence it is highly esteemed for pastures, lawns, and putting greens of golf courses as well as for polo grounds, bowling greens, etc. If sown alone 2 to 4 bushels are required. Price, Blue Ribbon Brand, per lb. 30c; bu. (14 lbs.) \$4.00. Bags included.

**SHEEP FESCUE (Festuca Ovina).**

Most valuable as a pasture grass for high and dry situations, affording good grazing where other varieties burn out. We especially recommend this grass in mixtures where long droughts are liable to injure other sorts. The foliage is very fine in texture, it has a tendency to grow in tufts, hence close grazing is desirable. If sown alone use 1½ to 2 bushels per acre, or in mixtures 10 to 12 pounds per acre. Per lb. 20c; bushel (14 lbs.) \$2.25; 5 bushels and over \$2.15 per bushel. Bags included.

**WOOD MEADOW GRASS (Poa Nemoralis).**

This belongs to the same family as Kentucky Blue Grass, and is more suitable to low loamy situations and for shady lawns and pastures. Blue Ribbon Brand, per lb. 50c; bu. (14 lbs.) \$5.00. Bags included.

**ROUGH STALK MEADOW GRASS (Poa Trivialis).**

This is eminently suitable to the same use as Wood Meadow; is of considerable nutritive qualities and is exceedingly relished by horses, cattle, and sheep. In moist soils in connection with other grasses it yields good crop of hay, while for pasture is excellent. Sown alone requires from 1 to 1½ bushels per acre; in mixture 4 to 5 pounds. Blue Ribbon Brand, per lb. 40c; bu. (14 lbs.) \$4.00. Bags included.

**BERMUDA GRASS.**

Recommended for spring seeding only. See description in our annual catalogue January 1st. Price per lb. 70c; postpaid 80c.

**Clover and  
Grass Seed  
Sowers**

**HOLMES' WIRE ROPE WHEELBARROW SEEDER.** The best of all seeders, distributing quickly and evenly. Plain Seeder sows Clover, Timothy, Alfalfa, and heavy seeds. Price \$7.00. Combined Seeder sows heavy seeds above, also Orchard Grass, Blue and other light seeds. Price, \$8.00.

**CAHOON BROADCAST SEEDER.** Sows Grain, Clover, Timothy, and heavy seeds. Price \$3.00.

**CYCLONE BROADCAST SEEDER.** Sows Grain, Clover, Timothy, and heavy seeds. Price \$1.25.



# Crimson or Scarlet Clover

Also known as Annual or German Clover.

For Summer and Fall Sowing Only.

This important crop is becoming more generally used throughout all this section and further south. If it was used generally over this State it would increase the soil fertility millions of dollars in value.

There is no crop of such inestimable value for general soil improving for summer and fall sowing. It is the finest cover crop for tobacco, corn, or cotton sown after the last

working, enriching the soil for succeeding crops. Its value as a preliminary fertilizer crop for corn, second crop potatoes or any crop planted about May 1st, is inestimable. Its value as a fertilizer is superior to Red Clover, and a larger crop can be produced in eight months.

It affords from fall to late spring the best and most nutritious winter pasturage, besides producing the finest green food for cutting, or most excellent hay the following spring.

It costs little to sow per acre. Is easy to get a stand and yields more profit in less time than any one of this class of crop, not even excepting Cow Peas.

Crimson Clover can be sown 12 to 15 lbs per acre in June, July, August, and September, August usually being best. It is better to have a firm seed bed, and if recently broken, harrow until ground becomes finely pulverized then board or roll, so as to get a hard, firm seed bed. It is preferable to wait for a rain on the prepared land, and then after it is dry enough, break the crust with a sharp spike tooth



Crimson Clover.

harrow and then sow the seed. Loamy land plowed or cultivated a month or two previous can be harrowed over, and seed sown, then lightly harrowed and rolled. In other words, it is important that seed be covered lightly and firmly.

If sown early, the crop can be grazed in the fall and during all seasonable winter weather, extending to late spring. Crop is usually in full bloom about May 10th to 15th, depending on season and locality.

Blue Ribbon quality, per pound 10c; \$4.25 per bushel; 5 bu. lots \$4.10 per bushel. Bags each 22c extra, f. o. b. Louisville.

Oldham County, Kentucky, May 12, 1913.

I surprised all the farmers around Buckner with my Crimson Clover field. You know I have planted Crimson Clover for the last four years, always with success. This year I got it right along the road and everybody admires it. On purpose I left the clover for the full growth and blooming so as to get an idea of the clover, what it is. I will plow it under now.

K. BLOOMER.



# Clover Seeds

Prices subject to market change. Orders entrusted to us will be supplied at market rates on day received. Blue Ribbon Best Grades are re-cleaned and of highest quality. In ordering Clover Seeds remit for Seamless Bags 22c each extra.



Red Clover

**WHITE CLOVER.** Largely used for pasture and lawns. Sow 1 to 2 pounds per acre in mixtures. Per pound 35c; 10 lbs. 30c per pound. Bags 22c each extra.

## Hairy or Sand Vetch (*Vicia Villosa*)

Produces enormous yields of most nutritious hay. Excellent for grazing in Winter and Early Spring. Re-seeds itself when properly managed. Magnificent soil improver.

This crop has attracted widespread attention in all parts of this country, and is highly recommended by best agricultural authorities. The U. S. Department of Agriculture has issued several bulletins advancing it, as well as many experiment stations throughout the country.

In many parts of the South where it has grown, Hairy Vetch is most highly esteemed; in fact, is regarded as the very best crop for fall sowing to produce a magnificent crop of hay the following spring, besides affording good pasturage during the winter and early spring months. Reports sometimes come that hay crop is so heavy that it has to be hauled off the land to cure.

The hay is of the richest and most nutritious value, is readily eaten by all stock. Grazing seems to benefit rather than injure the crop, but cattle should be taken off the last of March. When cut, many of the seeds shatter, which if lightly harrowed in will produce next season's crop, thus affording continuous crops from year to year.

Hairy Vetch is highly recommended by the Dept. of Agriculture and the Connecticut Experiment Station for sowing in tobacco fields as a cover crop and to keep up fertility. For this, as well as Cotton and late Corn, if Hairy Vetch is used, the fertility of the land can be maintained at a minimum cost.

**SEEDING.** Sow from July to September in this latitude; farther south as late as November, broadcast or in grain drill at the rate of forty to fifty pounds per acre. If for hay a half bushel of Barley or Winter Oats will assist in keeping the plant upright so that harvesting will be easier. Per lb. 12c; 10 lbs. and over at 9c; 100 lbs. and over at 8c per pound. Seamless bags 21c each extra.

A certain seedsman would have me believe I could not get a good sweet clover seed only from him. In our many years dealings you have always furnished good seed and satisfactory in every respect.

**RED CLOVER (*Trifolium Pratense*).** Too well known to need extended description. Usually sown in the spring, but we regard fall sowing as the best, especially if alone or with grasses. Usually sown from  $\frac{1}{8}$  to  $\frac{1}{4}$  bushel per acre alone, or in connection with other grasses 5 to 6 pounds. Price, Blue Ribbon Brand 20c per pound; per bushel (60 lbs.) \$11.00; 5 bu. and over \$10.90 per bushel. Bags holding  $2\frac{1}{2}$  bu. 22c each extra. Current prices on request.

**SAPLING OR MAMMOTH CLOVER.** Also called Pea Vine or English Clover. Similar to above, except of ranker growth and blooms three weeks later. Blue Ribbon Brand, per pound 20c; per bushel (60 lbs.) \$11.25; 5 bushels and over \$11.15 per bushel. Bags 22c each extra. Current prices on request.

**ALSIKE CLOVER.** Also called Swedish Clover. (*Trifolium Hybridum*). Similar to Red Clover, though not quite so rank. Blossoms are lighter colored, and ripens slightly later, hence better to use with Timothy or Red Top. Splendid for pasture, lasting out a longer time than ordinary clovers. If alone, sow 5 to 8 pounds per acre, in mixtures 3 to 4 pounds. Price Blue Ribbon Brand, per pound 20c; per bushel (60 lbs.) \$11.00; 5 bushels and over \$10.90 per bushel. Bags 22c each extra. Current price on request.



Farmington, Ky., February 20, 1913.

DR. W. B. STOKER.

## Alfalfa or Lucern

Most farmers prefer to sow this in the summer and fall rather than in the spring as danger of being smothered with weeds is less and two cuttings can be made of this crop the following year.

There is no trick about getting a good stand of Alfalfa and no doubt about securing good results under reasonably good conditions. The question of physical condition of the soil is of main importance. Loose or loamy soils or soils with gravelly or sandy subsoils are splendidly adapted to it, for the roots go down to great distances, therefore its immense value in hot, dry climates. Clay or very heavy soils are not suitable, but on loamy, sandy or limestone soils it is very successful in this latitude and all sections of the South.

**Preparation and Sowing.** Clean land, preferably that which has been planted in cultivated crops, should be broken up as deeply as possible, subsoiling where not liable to wash. Then harrow thoroughly, getting the top soil as fine as possible. Then roll with a heavy roller to make a firm seed bed. Then sow good seed 20 lbs. per acre broadcast. Then cover with spike tooth harrow running shallow. Then roll again to press the soil firmly around the seed. A slight top dressing of well rotted stable manure is most excellent, or an application of 200 lbs. good commercial fertilizer broadcast will be beneficial.

**Uses and Care.** Alfalfa yields 4 to 8 cuttings per season; depending upon section. It should not be grazed. When to be used for green feed, cut in the morning and let it wilt a

little, as too much green food is apt to injure stock. For hay, cut closely when in bloom, let it lie 24 hours, then rake in windrows and when dry, stack in field with straw covering or stored under cover like clover, handling as little as possible to keep from shedding the leaves. An occasional top dressing of manure and with ordinary care an Alfalfa field will last for twenty years, and the best crops are usually produced when three or four years old.

**Inoculation.** On most soils in this section we do not consider inoculation necessary, but we can supply inoculating material for applying to the seed before sowing. Circulars for further information on request.

**PRICES.** Poor or old Alfalfa seed is not worth sowing. Always buy the best. Sow in this section in August, further South it can be sown in September and October. 20 lbs. per acre is required.

**BLUE RIBBON BEST GRADE,** per lb. 20c; 10 lbs. \$1.50; bushel \$7.75; 5 bu. lots, \$7.50 per bushel. Bags 22c each extra.

**INOCULATION BACTERIA FOR ALFALFA.** Trial size 50c; for one acre \$2.00; for five acres \$9.00.

## Bokhara or Sweet Clover

A variety of clover which, when young, resembles in growth Alfalfa, but on mature development grows from four to six feet in height. It is extremely vigorous and especially adapted to waste lands, though by many prominent farmers and stockraisers is used on good land for a crop forage. It is very vigorous growth, standing frost and drouth remarkably well, the tap roots penetrating the soil very deeply, and occasionally used as a drainage plant for wet soils. It will grow on almost any barren hillside, in bottoms, and is equally adapted to all good farming lands.

Sweet Clover is one of the most valuable of all crops for bees, being the main honey plant in many sections. We offer two kinds of seeds, white blossom and yellow blossom. Hulled or clean seed require 6 to 8 pounds per acre; the unhulled requires 12 to 15 pounds per acre. Can be sown either in spring or fall, preparing and sowing as you would for Red Clover.

**Unhulled White,** per lb. 18c, 100 lbs. and over 17c per lb.

**Unhulled Yellow,** per lb. 15c, 100 lbs. and over 14c per lb.

**Hulled Yellow,** per lb. 15c, 100 lbs. and over 14c per lb., bags 22c extra.



Alfalfa or Lucern



Roots of Sweet Clover  
over 4 ft. long



## ACME BRAND FERTILIZERS

Largely Increases Crops. Permanent Soil Improvers. Endorsed by the Leading Growers Wherever Used.

**ACME BRAND FERTILIZERS** are prepared carefully from years of practical experience with fertilizers for various crops and are not mere stimulants, but will be found permanent improvers of the soil. The Acme Brands are more extensively used by growers in this country than any two other brands combined. That they are superior is shown by the many flattering reports we have received and the enormous sales. Space will not permit us to publish any of the many testimonials we have received about the superiority of Acme Brand Fertilizer, though we send them on request.

The prices given below are **Net Cash and F. O. B. Louisville**. Special prices quoted delivered at any depot. Send us estimated quantities.

### ACME BRAND PURE RAW BONE MEAL.

Per bag (125 lbs.), \$2.25. Per ton, \$35.00.  
Guaranteed Analysis.

Ammonia ----- 4 to 5 per cent.  
Phosphoric Acid available 22 to 25 per cent.  
Equal to Bone Phosphate .48 to 52 per cent.

This is the finest Pure Raw Bone Meal made especially for us by one of the largest packing houses in the country of pure untreated green bone. It is in fine mechanical condition, and equal to any bone offered anywhere. Use 200 to 300 lbs. broadcast.

### ACME BRAND POTATO AND TOBACCO FERTILIZER.

Per bag (125 lbs.), \$1.90. Per ton, \$28.50.  
Guaranteed Analysis.

Ammonia ----- 3 to 4 per cent.  
Phosphoric Acid available .8 to 10 per cent.  
Potash (actual) ----- 6 to 7 per cent.  
(Potash in this brand all from high grade sulphate.)

Especially prepared for Irish and Sweet Potatoes, Tobacco, and other crops requiring a good percentage of potash.

### ACME BRAND SPECIAL TRUCKERS' FERTILIZER.

Per bag (125 lbs.), \$1.80. Per ton, \$27.00.  
Guaranteed Analysis.

Ammonia ----- 3 to 4 per cent.  
Phosphoric Acid available .8 to 10 per cent.  
Potash ----- 2 to 3 per cent.

Made from a fine animal bone basis and prepared especially for quick growing crops, such as Peas, Beans, Early Corn, Melons, etc., and will give fine results on any garden crop, and we unhesitatingly recommend it for general use. 300 to 400 lbs. in hills or drill, 600 to 800 lbs. broadcast.

### ACME BRAND WHEAT AND CORN FERTILIZER.

Per bag (125 lbs.), \$1.50. Per ton, \$23.50.  
Guaranteed Analysis.

Ammonia ----- 1 to 2 per cent.  
Phosphoric Acid available 10 to 12 per cent.  
Potash (actual) ----- 2 to 3 per cent.

This fertilizer not only largely increases the yield of Corn, Wheat, Oats, and other grain crops, but gives splendid after results on grass and clover. It is of permanent improvement to soil and leaves the land in better condition for any other crop that may follow the grain crop. Use 200 to 400 pounds per acre in hills or drills, and when broadcasted use 400 to 500 pounds per acre, harrowed in. For Corn, if applied in the hills, use one handful to two or three hills, scattering it somewhat so as not to let the seed come in direct contact with the fertilizer.

### ACME BRAND HIGH GRADE VEGETABLE FERTILIZER.

Per bag (125 lbs.), \$2.00. Per ton, \$31.00.  
Guaranteed Analysis.

Ammonia ----- 4 to 5 per cent.  
Phosphoric Acid available 10 to 12 per cent.  
Potash (actual) ----- 4 to 5 per cent.

### ACME BRAND B. B. P. BLOOD, BONE, AND POTASH FERTILIZER.

Per bag (125 lbs.), \$1.60. Per ton, \$25.00.  
Guaranteed Analysis.

Ammonia ----- 2 to 3 per cent.  
Phosphoric Acid available 10 to 12 per cent.  
Potash (actual) ----- 2 to 3 per cent.

## Ground Phosphate Rock

This is coming into general use by progressive farmers in all sections, as it supplies Phosphoric Acid cheaper than from any other source. The Phosphate Rock is dried and finely ground so as to render the Phosphoric Acid as quickly available as possible. So finely is this product pulverized that 70 per cent of it will go through a two-hundred mesh screen, and unless it is finely ground, it is so insoluble that it is not desirable to use. We consequently advise all farmers using Ground Phosphate Rock to have it in as finely ground condition as possible. Due to the extreme fineness of our Phosphate Rock, 7 per cent of it is almost immediately available, and the balance will become available by the action of the acids in the soil. We recommend Phosphate Rock to be applied at the rate of from 500 pounds to one ton per acre, a larger quantity being preferable. It will produce most remarkable improvement on grain and grass crops, and besides affording Phosphoric Acid to the crop, corrects acidity in the soil, which is due to continued action of decaying vegetable matter and the constant use of acid fertilizers. Phosphate Rock is going to be used in enormous quantities in years to come, and the sooner the farmers take up the use of it the better condition their soils will be put in, and the larger will be the increased returns.

Price per ton \$9.00, 5 tons and over \$8.50, car loads quoted on application; freight paid to any point.



# Fertilizer Material and Special Fertilizers

## POTASH

There is a large demand for potash for farm and garden crops, and with the demand for Lime, we have arranged for carrying a complete line of Potash Salts offered by the German Kali Works. Booklets on "Potash in Agriculture" mailed free on request. Prices of Potash are subject to market changes and net cash with the order only.

**MURIATE OF POTASH.** The cheapest and best form for nearly all farm and garden crops except potatoes and tobacco. It contains 50 to 55 per cent actual potash, K<sub>2</sub>O; is of crystalline form, and has to be mashed up and screened before using. Bags (200 lbs.) \$5.25; ton \$50.00; 5 tons and over \$48.00 per ton.

**SULPHATE OF POTASH.** Finely ground and the best form for tobacco and potatoes, 50 per cent actual potash. Bags (200 lbs.) \$5.75; ton \$57.00; 5 tons and over \$55.75 per ton.

## NITRATE OF SODA (Chilian Nitrate)

Analysis: 15.65 Nitrogen.

The quickest and most available source for applying Nitrogen to crops, producing quick growth on all garden crops as well as being most beneficial on farm crops where Nitrogen is deficient. Booklet on the use of Nitrate of Soda on request. Bag (200 lbs.) \$6.50. Per ton \$60.00, f. o. b. Louisville. Prices subject to change. Special prices in quantity.

## ACID PHOSPHATE OR DISSOLVED SOUTH CAROLINA ROCK

The main ingredient for supplying Phosphoric Acid in commercial fertilizers. It is quickly available, and will give good results on all crops requiring this.

14 per cent available; bag (125 lbs.) \$1.50, ton \$16.00; 16 per cent available, bag (125 lbs.) \$1.65, ton \$18.00.

## PERUVIAN GUANO

The best and most complete natural complete fertilizer. It is the result of accumulation of droppings from birds for thousands of years, and has been used in enormous quantities in all parts of the world. Applied to truck crops it gives quick as well as lasting results, and nothing is as generally satisfactory in the garden. It is excellent for applying as a top dressing to lawns, giving a quick, wonderful, luxuriant rich growth. 5 pounds 40 cents, 25 pounds \$1.00, bag (200 lbs.) \$6.00, ton \$55.00.

## PULVERIZED SHEEP MANURE

Especially desirable for applying to putting greens and fine lawns. Supplied in 100-lb. bags only. Price per 100 lbs. \$1.75, 1,000 lbs. \$13.00, ton \$25.00.

# Poultry Supplies, Foods, Bird Seeds, etc.

**PURINA CHICK FOOD.** A complete food for young chicks, combining all elements for growth and development. Combined from corn, wheat, Kaffir corn, millet, bone, and charcoal. 10 lbs. 35c; 50 lbs. \$1.25; 100-lb. bag \$2.00.

**PURINA SCRATCH FOOD.** A very superior food for general feeding, combining diversity of grains without grit, shell, or cheap ingredients. Combined from corn, wheat, barley, oats, and Kaffir corn. 50 lbs. \$1.00; 100-lb. bag \$1.75.

**AUNT PATSY POULTRY FOOD.** A scientifically prepared food which produces the largest quantity of eggs. Highly recommended. 100-lb. bags \$3.00.

**SHORT CUT ALFALFA.** A standard green food invaluable for egg production. Can be fed either with mashed food, used in the trough by itself, and is excellent to scatter in brooders, or where young chicks run. 50 lbs. 85c; 100 lbs. \$1.50.

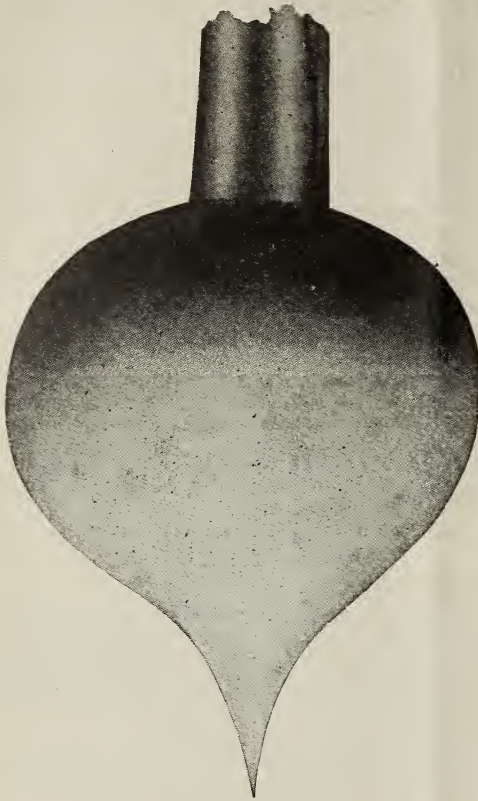
**CHARCOAL.** Absolutely indispensable as an aid to digestion, and promotes health of both young chicks and fowls. A little goes a long way. Pound 10c; 3 lbs. 25c; 10 lbs. 50c; 50 lbs. \$2.00.

**CRUSHED OYSTER SHELL.** Every raiser of poultry, whether large or small, should have a supply of Shells and use it freely either in poultry yards or where fowls run, as it is absolutely necessary to the development of both bone and for egg production. 5-lb. pkg. 10c; 25-lb. pkg. 30c; 100-lb. sack 70c; 1,000 lbs. \$6.50; ton \$12.00.

**MICA CRYSTAL GRIT.** One of the most valuable grits that has ever been introduced, improving the condition of all kinds of poultry, keeping them in healthy condition, and entering into the formation of the component parts of the shells and yolks of eggs. This is the standard grit of America; recognized by breeders as the best. Price, 5 lbs. 10c; 25 lbs. 35c; 100 lbs. 70c; ton \$12.00.

**CRYS-CO.** This is a shell producer and grit in one. Contains 99 per cent pure carbonate of lime, makes hard egg shells and increases hen's laying power. It is flinty and grinds food as ordinary grit, consequently in using Crys-co it takes the place of both Oyster Shell and Grit. Fine, medium, and coarse, for various fowls. 5 lbs. 10c; 25 lbs. 35c; 100-lb. bags 70c; ton \$12.00.

# Turnip and Rutabaga Seeds



Improved Purple Top Globe Turnip.

One oz. will sow 400 feet of drill or 360 square feet (19x19). An acre requires 1½ lbs. in drill, 2 lbs. broadcast. For spring use, sow in February or March. For fall and winter, from July to September.

For feeding to stock alone, the use of Turnips should be increased ten times as much as at present.

They cost so little to grow and make such a splendid and nutritious feed all through the winter that every farmer should provide a liberal supply for his stock. Our turnip seeds are noted for the fine roots produced. An acre of turnips yields 600 to 1,000 bushels per acre.

**Culture.**—Sow either broadcast or in drills two feet apart, thinning out to six inches and roll the ground after sowing. Rutabagas should be sown in July and early in August and earthed up as they grow. The salad turnips require three pounds per acre.

## WHITE-FLESHED VARIETIES.

5 lbs.  
and over  
Per lb. Per lb.

Early Red or Purple Top (strap-leaved). Excellent for table or market.....	40c	35c
White Flat Dutch (strap-leaved). Similar to Red Top, except top is white....	40c	35c
W. S. & Co.'s IMP'D RED TOP GLOBE. A greatly improved strain.....	40c	35c
Pomeranian White Globe. A popular main crop sort for market, salad, or stock.	35c	30c
Large White Norfolk. Largely grown for stock feeding, market, and salad....	35c	30c
Extra Early Red Top Milan. Best early turnips for market or private garden.	60c	55c
White Egg. A pure white, rapid growing, egg-shaped sort.....	35c	30c
Long White Cowhorn. An excellent white table or stock-feeding sort.....	35c	30c
Southern Prize. Fine for stock or winter salad, hardy and needs no protection.	35c	30c
Seven Top. Grown only for winter salad. Very hardy.....	40c	35c

## YELLOW-FLESHED VARIETIES.

Purple Top Yellow Aberdeen. A splendid stock-feeding sort.....	35c	30c
Large Amber, or Yellow Globe. Excellent for general crop, stock or market....	35c	30c
W., S. & Co.'s IMP'D AMERICAN PURPLE TOP RUTABAGA.....	40c	35c

If ordered to be sent by mail, add 8 cents per pound for postage to prices named above, or in quantity of three pounds and over Turnip Seeds can be forwarded cheaply by express or freight.

Hart County, Ky., February 10, 1913.  
The seed wheat we bought of you last fall is the finest prospect I ever saw. **BURKS & SON.**



## Abridged List Vegetable Seeds for Fall Sowing

Descriptions will be found in our Spring Catalogue, which will be mailed free on request. Postage Free on packets, ounces, and ¼ lbs. Add at the rate of 8 cts. per lb. in large quantities if to be sent by mail.

	Pkt.	oz.	¼ lb.	1 lb.
<b>Cabbage.</b> For fall or winter sowing.				
Select Early Jersey Wakefield. Best early market sort.....	\$0 05	\$0 20	\$0 60	\$2 00
Large or Charleston Wakefield. Larger than above.....	05	20	60	2 00
Henderson's Early Summer. Splendid second early.....	05	20	60	2 00
Early Flat Dutch. Good for main crop.....	05	15	50	1 50
All Head Early. Excellent second early.....	05	15	50	1 50
Solid South. One of the best second earliest flat head.....	05	20	60	2 00
Henderson's Succession. Good early or late.....	05	20	60	2 00
Louisville Drumhead. (Home grown).....	10	25	85	3 00
Louisville Drumhead. (Northern grown).....	05	20	60	2 00
<b>Cauliflower.</b> For forcing and spring setting.				
Blue Ribbon Snowball. Finest for forcing or outside.....	35	3 00	10 00	36 00
Earliest Snowball. Fine strain.....	10	2 00	7 00	22 00
Extra Early Dwarf Eufurt. Best for outdoors.....	10	2 00	7 00	22 00
<b>Corn Salad.</b> Large Seeded. Best variety.....	05	10	20	60
<b>Endive.</b> Green Curled. Best variety.....	05	15	35	1 00
<b>Kale.</b> Green Curled Siberian. Northern. Most popular.				
5 lbs. \$1.75.....		05	15	40
Home Grown Siberian. 5 lbs. \$1.00.....		05	10	25
Dwarf Green Scotch. Light green.....		05	20	60
Spring or Smooth. Smooth leaved sort. 10 lbs. @ 10c per lb. ....	05			15
<b>Lettuce.</b> Tilton's White Star. Curled forcing.....	05	15	35	1 00
Black Seeded Simpson. (White Paper Curled).....	05	15	35	1 00
Grand Rapids Forcing. Dark green curled.....	05	15	35	1 00
Early Curled Simpson. White seeded.....	05	15	35	1 00
Imperial Cabbage. Splendid head.....	05	20	60	2 00
Big Boston. Popular for glass culture.....	05	15	40	1 25
Blue Ribbon Big Boston. Light green without red edge....	05	20	60	2 00
May King. Quick heading, splendid.....	05	15	35	1 00
California Cream Butter. One of the best.....	05	15	35	1 00
Iceberg. Large solid heads.....	05	15	35	1 00
Deacon Cabbage. Hardy, solid heads.....	05	10	35	1 00
Denver Market. Large curled heads.....	05	10	30	1 00
<b>Spinach.</b> Round Thick-leaved. 10 lbs. \$1.50; 100 lbs. \$12.00.....		05	10	20
Norfolk Savoy or Bloomsdale. Best for fall. 10 lbs. for \$1.50; 100 lbs. \$12.00.....		05	10	20
<b>Radish.</b> Fall and Winter Sorts.				
Rose China Winter. Half long scarlet. Pkt. 5c; oz. 10c; ¼ 20c; 1 lb. 60c.				
Round or Long Black Spanish or White Spanish. Pkt. 5c; oz. 10c; ¼ lb. 20c; 1 lb. 60c.				
Other varieties for forcing. Pkt. 5c; oz. 10c; ¼ lb. 20c; 1 lb. 50c.				
<b>Summer Varieties.</b>				
White Top Scarlet Turnip. Pkt. 5c; oz. 10c; ¼ lb. 15c; 1 lb. 50c; 5 lbs. \$2.00.				
White Strassburg. Pkt. 5c; oz. 10c; ¼ lb. 15c; 1 lb. 50c; 5 lbs. \$2.00.				

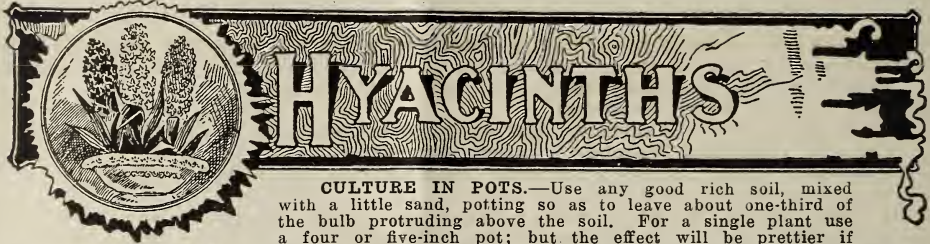


Solid South Cabbage.

Franklin County, Ark. The corn and peas which I ordered from you arrived in first-class condition, in much less time than expected. Freight also less than expected owing to distance. I am much pleased at the appearance of seed, also the quick and business-like manner in which you handled this order. Am sure I saved enough on this order in buying from you to pay freight though only a small order. When in need of more seeds you may expect my order, also will speak a good word for you when I can. Wishing you much success, I am,

D. D. BRADNER.





**CULTURE IN POTS.**—Use any good rich soil, mixed with a little sand, potting so as to leave about one-third of the bulb protruding above the soil. For a single plant use a four or five-inch pot; but the effect will be prettier if three, six, or as many as a dozen are planted together in a large size pot, and still more effective if all are of one color. The soil should be pressed firmly around the bulbs, but do not pack it hard underneath. After potting, water thoroughly, and place in some cool dark place for eight or ten weeks watering occasionally to keep the soil moist. A still better plan is to sink the pot in the earth for about five or six inches, covering with soil or coal ashes, choosing some position where they will not get too much water. For a succession of bloom, bring as many as desired about December 1st, and every two weeks thereafter until February 1st. The room in which they are to flower should be moderately warm, and when they begin to bloom, give plenty of water and as much fresh air as possible.

**IN GLASSES.**—For this purpose the largest and the heaviest bulbs should be used; therefore we strongly recommend our Select Named Hyacinths, and the single sorts are the best. Fill the glass with water, so that the base of the bulb is immersed in it, and remove to a dark cool place till the roots have grown almost to the bottom of the glass. The water should be changed every week or two to keep it pure, and in doing this, draw the roots entirely out of the glass, and rinse both with clean water. A most successful method is to first plant the bulbs in shallow boxes of rich soil, giving the same treatment as Hyacinths in pots, and after keeping them in this for about three or four weeks transfer them to glasses. This will make them produce finer blooms and longer flower stems. When brought out to the light, shade the glass from the full rays of the sun, the effect of which is to heat the water to a fatal degree, and remove from the window at night if very cold.

**CULTURE IN OPEN GROUND.**—Any good garden soil will suit Hyacinths, and the depth at which they are planted should be determined by the character of the soil. If clay or very heavy, bulbs should not be covered more than three inches; if light, from four to six inches. When not planted deep, however, they should be protected with leaves of coarse litter to keep from freezing. This is advisable under any conditions, as it keeps from the alternate freezing and thawing so common in early spring.

## Select Named Hyacinths

10c each; 75c per doz.; 25 for \$1.25; \$4.50 per 100. 6 sold at dozen rates; 50 at 100 rates.

Postage 12 cents per dozen extra. If ordered at single rates no charge for postage.

These grand Hyacinths, imported by us direct from Holland, will produce the finest blooms. We especially recommend them for pots and glasses, as they will produce larger spikes, and the colors can be selected for most charming effects. Our collection embraces the best sorts grown. If selection of varieties is left to us, we will use greatest care to give satisfaction.

## Single Varieties

The best for Pots, Glasses, or Bedding, making Larger Spikes than Double Sorts.

### WHITE.

**Alba Superbissima.** Very fine white, tall spike.

**Grandeur a Merveille.** Blush white, very large.

**Mad. Van der Hoop.** Pure white, large bells.

### RED AND PINK.

**Norma.** Delicate pink; one of the best; early.

**Robert Steiger.** Fine, large, bright red; popular.

### BLUE.

**Baron von Thyll.** Dark blue, fine truss; early, tall.

**Czar Peter.** Light blue, large bells very pretty.

**LaPeyrouse.** Delicate lavender, very pretty shade.

### YELLOW.

**Herman.** Orange yellow.

**Ida.** Pure yellow, fine spike.



Single Hyacinth

# Choice Unnamed or Mixed Hyacinths

Best Quality, Colors Separate

These are excellent for open ground, and being in separate colors, can be planted in such designs as taste may dictate. They are satisfactory for forcing and cutting purposes, though for finer blooms and for growing in glasses we strongly advise named varieties.

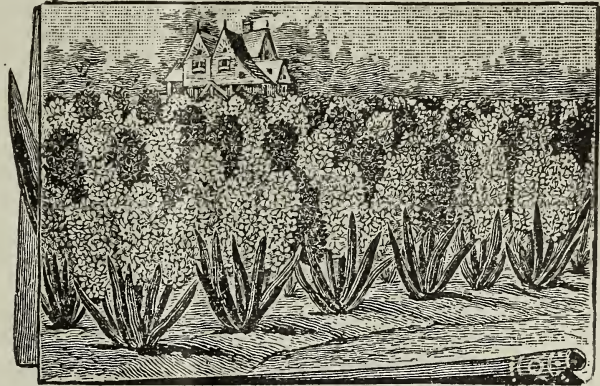
If by mail, add 10 cents per dozen for postage.

**SINGLE.**

	Each	Doz.	Per 100
Red and Dk. Red	05	.45	\$3.00
Pink and Rose	05	.45	3.00
Pure White	05	.45	3.00
White Shaded	05	.45	3.00
Light Blue	05	.45	3.00
Dark Blue	05	.45	3.00
Yellow	05	.45	3.00
Single—All colors	05	.40	2.75

**DOUBLE.**

Red and Dk. Red	05	.45	3.00
Pink and Rose	05	.45	3.00
Pure White	05	.45	3.00
White Shaded	05	.45	3.00
Light Blue	05	.45	3.00
Dark Blue	05	.45 <td 3.00	
Yellow	05	.45	3.00
Double—All colors	05	.40	2.75



Six Bulbs sold at dozen rates; 25 at 100 rates; 1,000 prices on application.

## Roman Hyacinths

The flowers, while smaller than those of the Dutch Hyacinths, are borne in much greater abundance, each bulb producing from six to twelve very graceful spikes of bloom. They can be forced very easily, and if planted early and brought into the house at intervals of say about two weeks, will yield a succession of blooms from Christmas to Easter.

White, extra selected bulbs, each 5c; doz. 50c; 100 \$3.25.

If by mail, add 10c per doz. for postage.

## Lilies

### The Bermuda Easter Lily (Lilium Harrisii)

The grandest forcing lily in cultivation, bearing a profusion of bloom that is marvelous. The flowers are of purest waxy white, and each plant bears from five to fifteen blooms, according to size of bulb. Very easy to grow, and by bringing to the light at different times, a succession can be had from Christmas to Easter.

A great favorite for both pots and garden culture.

Large Bulbs, for exhibition plants, 25c each; \$2.50 per doz. By mail, \$2.75 per doz.

Good Bulbs (5 to 8 flowers), 10c each; \$1.00 per doz.; \$7.00 per 100. By mail, \$1.10 per doz.

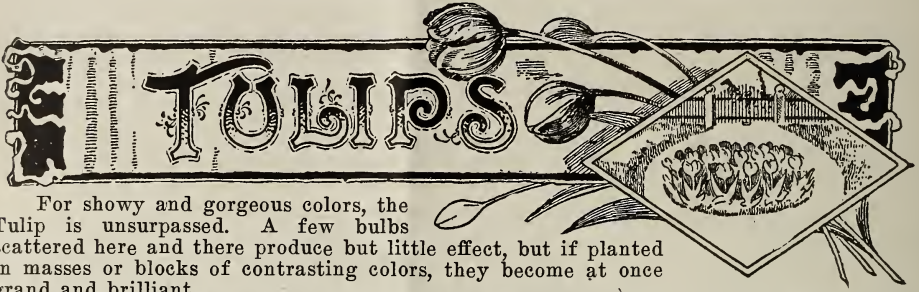
## Calla Lilies

Well-known house plants of great popularity. Of very easy culture, their one necessity being plenty of water. Our bulbs are

large California dry roots, which are better for forcing, producing blooms much more abundantly than those usually grown in the house. Mammoth Roots, 25c each; \$2.50 per doz. By mail, \$2.70 per doz. First Size Roots, 15c each; \$1.50 per doz. By mail, \$1.65 per doz.







For showy and gorgeous colors, the Tulip is unsurpassed. A few bulbs scattered here and there produce but little effect, but if planted in masses or blocks of contrasting colors, they become at once grand and brilliant.

**CULTURE IN POTS.**—For this purpose always select named sorts, and we suggest that the bulbs be all of one variety in the same pot. Put three in five-inch pot, or more in proportion in larger pots. Use ordinary good garden soil, and plant so that the top of the bulb will be just even with the surface of the soil. Water thoroughly, and then give the same treatment as Hyacinths in pots.

**CULTURE OUT OF DOORS.**—In preparing a bed for Tulips, care should be taken to have it shaped so that it will shed water, and the soil should be worked deep and made rich. Plant the bulbs three to four inches deep, according to the stiffness of the soil, and from four to six inches each way. Treat the bed as outdoor culture for Hyacinths, giving protection with covering of leaves or coarse manure. Every year or two take the bulbs up and replant, as they work themselves down too deep to bloom well. Our collection embraces the best sorts, and we have indicated their earliness of flowering by letters. Those marked A are the earliest flowering; B next, etc. Height in inches as indicated by figures.

## Select Named Tulips

If to be sent by mail add 5c per dozen; 40 cents per 100.  
6 sold at dozen rates; 25 at 100 rates; 1,000 prices on application.

### SINGLE VARIETIES.

- Artus. B7.** Fine bright red. 3 for 5c; 20c per doz.; \$1.00 per 100.  
**Belle Alliance. B9.** Beautiful bright scarlet, 3 for 10c; 30c per doz.; \$2.00 per 100.  
**Cottage Maid. B9.** Pink, with centre of white petals. Extra fine, 2 for 5c; 20c per doz.; \$1.00 per 100.  
**Duchess of Parma. 9B.** Orange, yellow border; very striking flowers. 2 for 5c; 20c per doz.; \$1.00 per 100.  
**Keizerskroon. B10.** Deep crimson, with orange border. Large and effective. 2 for 5c; 25c per doz.; \$1.25 per 100.  
**LaReine. B8.** Good white, tinged rose. 2 for 5c; 20c per doz.; \$1.00 per 100.  
**Yellow Prince. B9.** Large golden yellow, very showy. 2 for 5c; 20c per doz.; \$1.00 per 100.

### DOUBLE VARIETIES.

- Duke of York. B10.** Dark rose, bordered with white, 3 for 10c.; 25c per doz.; \$1.25 per 100.  
**Gloria Solus. A9.** Rich, bronze crimson, with yellow edge; large. 3 for 5c; 25c per doz.; \$1.50 per 100.  
**La Candeur. B8.** Pure white, good bedding, 2 for 5c; 25c per doz.; \$1.50 per 100.  
**Rex Rubrorum. B9.** Bright crimson scarlet; splendid for bedding. 3 for 10c; 30c per doz.; \$2.00 per 100.  
**Yellow Rose. D12.** Large flower, golden yellow; late. 2 for 5c; 20c per doz.; \$1.00 per 100.

## Choice Mixed Tulips

- W. S. & Co.'s Special Mixed Single.** An extra fine mixture, composed entirely of named sorts of brightest colors blooming together. 20c per dozen; \$1.00 per 100; \$8.00 per 1,000.  
**Finest Mixed Single.** First quality. 15c doz.; 75c per 100, \$6.00 per 1,000.  
**W. S. & Co.'s Special Mixed Double.** Composed entirely of named sorts,

proper proportion of bright colors all blooming together. An unexcelled mixture. 20c per doz.; \$1.25 per 100; \$10.00 per 1,000.

- Finest Mixed Double.** First quality. 15c per doz.; 75c per 100; \$6.00 per 1,000.  
**Finest Mixed Parrot.** Fantastically shaped flowers; later blooming than the above varieties. 20c per doz.; \$1.00 per 100.

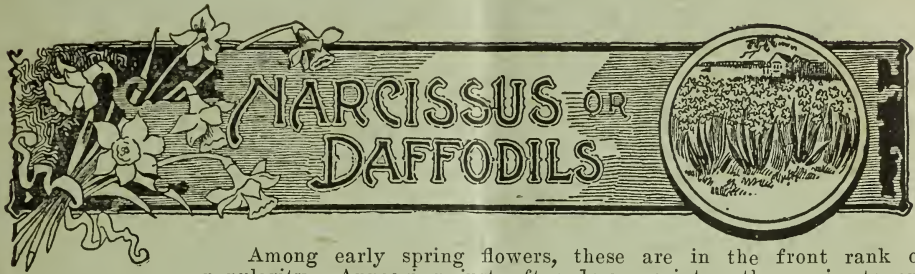
**DARWIN TULIPS.** These excel in brilliancy of colors, perfect form of flowers, and very tall strong stems. They are splendid for small clumps in borders or among shrubbery, blooming three weeks later than early sorts. Finest named varieties. Per doz. 40c; per 100, \$2.50.

**IRIS (Fleur de Lis).** Splendid for borders. Plant 2 to 3 inches deep.

**ENGLISH.** Not quite as large as the ordinary Iris and somewhat smaller flowers ranging in shades and colors from white to dark blue. Per doz. 25c; per 100, \$1.50.

**SPANISH (Hispanica).** A very beautiful variety, often called the Orchid Iris from its delicately formed, beautiful flowers. Excellent for pots or outside. Colors, violet, yellow, blue, white, etc. **Mixed Varieties,** four for 5c; 15c per doz.; 60c per 100.





Among early spring flowers, these are in the front rank of popularity. Appearing just after dreary winter, they animate our gardens with masses of gold and silver, while their fragrant blossoms in the home are invaluable for decorative purposes. Most of the sorts are excellent for growing indoors, while all are excellent for the garden, giving beautiful effects in clumps.

**CULTURE IN POTS.**—Treatment same as for Tulips in pots. The Polyanthus varieties are the earliest blooming, and can be forced as easily as Roman Hyacinths.

**CULTURE OUT OF DOORS.**—All varieties of Narcissus should be grown in clumps and patches in every suitable vacant spot, and there is not a spot where grass will grow in which Narcissus will not succeed. In planting, be guided by the size of the bulb, allowing four or five inches between small sorts, and six to eight inches between large varieties. The bulbs will soon completely fill the spaces, forming a compact mass and it is then their flowers are produced the most freely. Plant the bulbs two or three inches deep, according to the size of the bulb. The Polyanthus varieties require slight protection.

### Polyanthus, or Bunch Flowered Narcissus.

These are generally used for forcing, and bear large clusters of delicately scented flowers—white, orange, yellow, etc. They are of easiest culture, succeeding well inside or out.

**Paper White Grandiflora.** Larger flowers and clusters than Paper White. Price 4c each; per doz. 25c; per 100 \$1.50. By mail, 35c per doz.

**Mixed Polyanthus Narcissus.** 4c each; per doz. 25c; per 100 \$1.50. By mail, 35c per doz.

### Double Flowering Narcissus.

Add 8 cents per dozen if by mail.

**Alba Plena Odorata.** A double pure white variety, with exquisitely-scented flowers. Excellent for outside planting and cutting. 3 for 5c; 15c per doz.; 75c per 100.

**Von Sion.** Rich golden yellow, with double trumpet. One of the best forcing sorts and used in immense quantities by florists. An excellent garden sort. 3 for 10c; 25c per doz.; \$1.50 per 100.

### Single Trumpet Varieties.

Add 5 cents per dozen if by mail.

**Poeticus (Pheasant's Eye, or Poet's Narcissus).** Pure white flowers with orange cup, edged with crimson. Beautiful for outside planting. Splendid cut flower. Three for 5c; 15c per doz.; 75c per 100; \$6.00 per 1,000.

**Trumpet Major.** Deep golden-yellow. Splendid forcing sort, and largely used for outside planting. Four for 10c; 20c per doz.; \$1.00 per 100.

**Emperor.** 10c each; 40c per doz.; \$1.75 per 100.

### CROCUS.

One of the earliest blooming spring flowers, and very effective in lawns and borders. They show off very prettily when planted in the turf of a lawn with Snowdrops, etc., the flowers shooting up among the grass. They are very useful to plant in Hyacinth or Tulip beds in between the rows, thereby giving a succession of early flowers. Set the bulbs two inches deep, and two or three inches apart, and plant as early in fall as possible.

By mail, add 15c per 100; dozens mailed free.

Per doz. Per 100.

Yellow—Large	-----	\$0.10	\$0.50
White	-----	.10	.50
Blue and Purple	-----	.10	.50
Striped	-----	.10	.50
Mixed, all colors, per 1,000,	\$3.50----	.10	.50



## Chinese Sacred or Oriental Narcissus.

This variety is grown by the Chinese for celebrating their New Year festivals, and as an emblem of good luck. It is one of the most satisfactory and easily forced of all bulbs, attaining such rapid and luxuriant development you can almost see them grow. The bulbs are of immense size, each producing from ten to fifteen flowers stalks, and bearing a profusion of large and delicately scented blooms, white with orange cup. They can be grown in pits of earth, but are more normal and ornamental in shallow bowls of water, a few pebbles or small shells being placed around the bulb to keep it from turning over when in flower. The water requires changing occasionally to keep it pure. The bulbs commence to grow in a few days, blooming in four to six weeks. A dozen bulbs started at intervals will give a succession of flowers throughout the winter.

Price (True Chinese Grown Extra Large Bulbs), 10c each; 3 for 25c; 90c per doz. By mail, 15c each; 3 for 35c; \$1.25 per doz.

### Miscellaneous Bulbs.

#### Oxalis.

**BERMUDA BUTTERCUP OXALIS.** One of the finest winter flowering bulbs grown. A single plant, well grown, will fill a six-inch pot, throwing up 50 to 70 stems, which bear an immense number of flowers of bright buttercup yellow. They commence blooming in about six weeks and continue in greatest profusion and uninterruptedly for weeks. **Extra Large Bulbs**, 5c each; 40c per doz.; \$2.00 per 100.

**MIXED OXALIS.** 3 for 5c; 15c per doz.; \$1.00 per 100.

**CULTURE.**—Plant six to twelve bulbs in a pot, placing them about three inches below the soil. Water well and set in a warm, sunny window.

**SNOWDROPS.** These graceful little plants are among the earliest spring flowers often shooting up their delicate snowy white blossoms before the snow is off the ground. They form beautiful effects planted in masses or edgings, and can be used with Scilla, Chionodoxa, or Crocus for contrast. All of these small bulbs show off prettily, nestling in the turf, coming up from year to year. They are also useful for planting between the rows of Hyacinth and Tulip beds, blooming just as the larger bulbs are coming up, the foliage afterwards forming a carpet of delicate green, which adds greatly to the effect. **Single**, 3 for 5c; 15c per doz.; 90c per 100. **Double**, 2 for 5c; 25c per doz.; \$1.50 per 100.

**ANEMONES.** Attractive and ornamental plants bearing large single and double flowers in spring and early summer. Various colors—white, blue, red, etc. **Single Mixed**, 15c per doz.; 75c per 100. **Double Mixed**, 20c per doz.; \$1.25 per 100.

**Chionodoxa.** (Glory of the Snow.) Beautiful early spring flowering bulbs, producing flower-stalks bearing ten to fifteen lovely Scilla-like flowers. Splendid for clumps or edgings, and blooming at the same time as Snowdrops, form an excellent contrast if planted together. Perfectly hardy outdoors and fine for winter forcing.

**Lucilea.** Charming bright blue, with large white center. Three for 5c; 20c per doz.; \$1.00 per 100.

**SCILLA SIBERICA.** One of our most beautiful hardy spring bulbs, producing a profusion of exquisite rich blue flowers. If grown in masses, their flowers fairly carpet the ground, and if grown with Crocus and Snowdrops, the effect is magnificent. Excellent also for pots. 3 for 5c; 15c per doz.; 85c per 100.

(Joss Flower, Sacred Lily,  
Flower of the Gods, etc.)



Chinese Sacred Narcissus

WOOD, STUBBS & CO., Incorporated, SEEDSMEN  
LOUISVILLE, KENTUCKY