

1
F765Fo
Battlement
Reserve

Flat
Folio

U. S. Department of Agriculture

FOREST SERVICE

GIFFORD PINCHOT, FORESTER

FOREST ATLAS

OF THE

NATIONAL FORESTS OF THE UNITED STATES

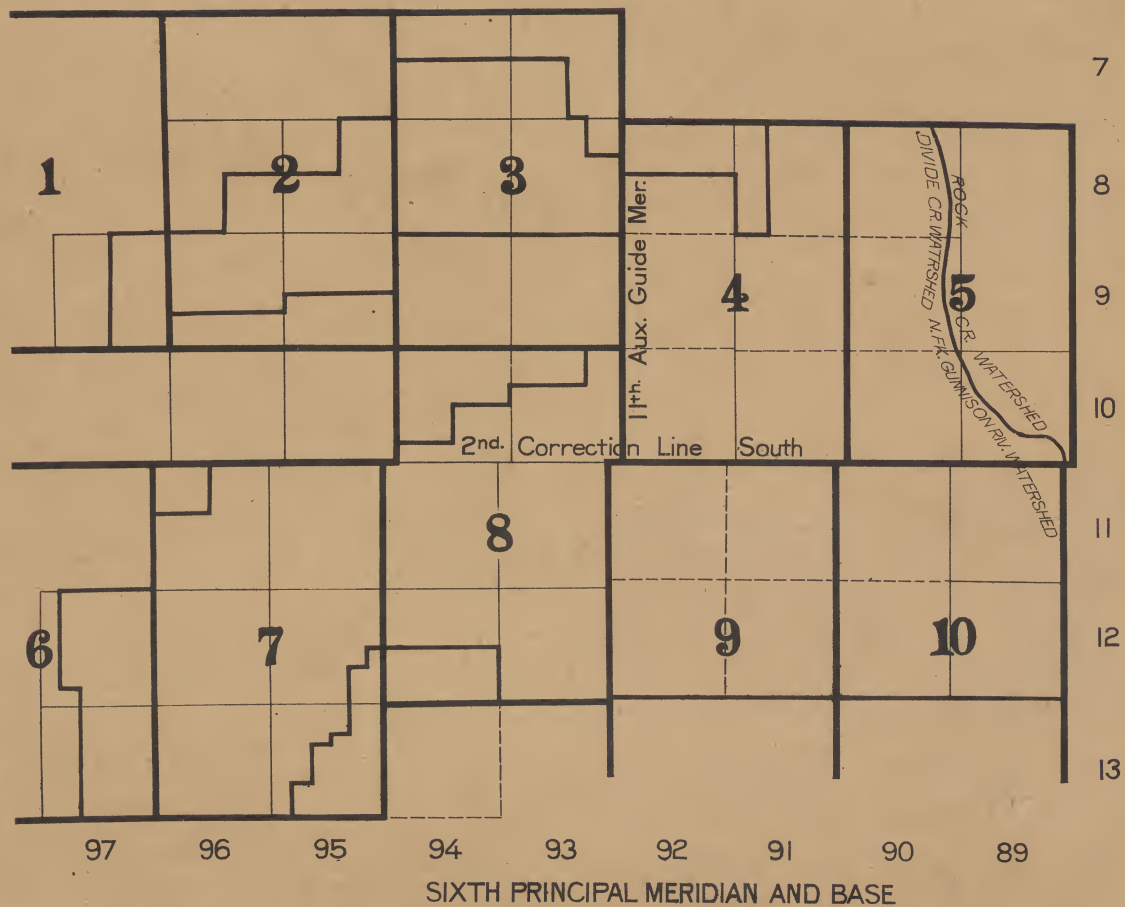
~~BATTLEMENT~~

Now

GRAND MESA

11-26-24
S.P.B.

FOLIO



USDA
LIB

AGSU
81

FOREST ATLAS

GENERAL CLASSIFICATION

Commercial Timber	
	Less than 2,000 B.F. per acre
	2,000 to 5,000 B.F. per acre
	5,000 to 10,000 B.F. per acre
	10,000 to 25,000 B.F. per acre
	25,000 to 50,000 B.F. per acre
	Woodland, cordwood, poles, etc.
	Chaparral or brush
	Sagebrush
	Grassland, parks, etc.
	Barren, above timberline, etc.
	Desert
	Burn, not restocking
	Burn, scattering trees
	Burn, forest cover established
	Windfall
	Bug-killed or diseased
	Old cutting, less than 1/3 of the merchantable timber removed
	Old cutting, 1/3 to 2/3 of the merchantable timber removed
	Old cutting, 2/3 to all of the merchantable timber removed
	Timber sales, less than 1/3 of the merchantable timber removed
	Timber sales, 1/3 to 2/3 of the merchantable timber removed
	Timber sales, 2/3 to all of the merchantable timber removed
	Cultivated
	Irrigated

TITLE

	Alienations
	Permanent alienations
	State lands, approved
	State lands, not approved
	Indian allotments
	Lieu selections
	Railway lands, patented
	Railway lands, not patented
	Homesteads, patented
	Homesteads, not patented
	Cash entry
	Timber and stone
	Coal entry
	Townsite entry
	Mineral lode claims, patented
	Mineral placer claims, patented
	Mineral mill site, patented
	Mineral classification

GRAZING MAP LEGEND

	Supervisor's headquarters
	Supervisor's division
	Ranger's division
	Grazing districts
	Open for all stock
	Open for cattle and horses only.
	Open for sheep and goats only
	Closed for all stock
	Lambing grounds
	Driveways for stock
	Corral

CONVENTIONAL SIGNS

	Block line
	Compartment line, sales
	Boundary line for all other classifications
	Grant line
	Telegraph line
	Telephone line
	Power line
	Pipe line
	Aqueduct
	Railroad
	Tramway
	Wire rope conveyor
	Wagon road
	Secondary or private road
	Pack trail
	Foot trail
	Fire line
	Fence
	Ditch
	Flume
	Slide
	Log driving route
	Rollway
	Skidway
	Bridge
	Ferry
	Ford
	Sowing
	Nursery
	Corral
	Supervisor's headquarters
	Ranger's headquarters
	House
	Railroad station
	Stage station
	Power station
	Hotel
	Store
	School
	Church
	Cemetery
	TEL. Telegraph office
	TLP. Telephone office
	Cabin
	Dairy
	Logging camp
	Sawmill, portable
	Sawmill, stationary
	Grist mill
	Grist and sawmill
	Apiary
	Mine location, unpatented

	Supervisor's headquarters
	Ranger's headquarters

	House
	Railroad station
	Stage station
	Power station
	Hotel
	Store
	School
	Church
	Cemetery
	TEL. Telegraph office
	TLP. Telephone office
	Cabin
	Dairy
	Logging camp
	Sawmill, portable
	Sawmill, stationary
	Grist mill
	Grist and sawmill
	Apiary
	Mine location, unpatented

U.S. Improvements made by the United States are marked U. S.

Proposed improvements are shown by the appropriate sign and are designated by "Proposed" on the margin of the maps

Abandoned improvements are shown by zeros O O O and designated on the margin of the maps

ALPHA-NUMERIC SYMBOLS FOR WESTERN COMMERCIAL TREE SPECIES

These will be used on maps, where limited space makes necessary, in the following manner:

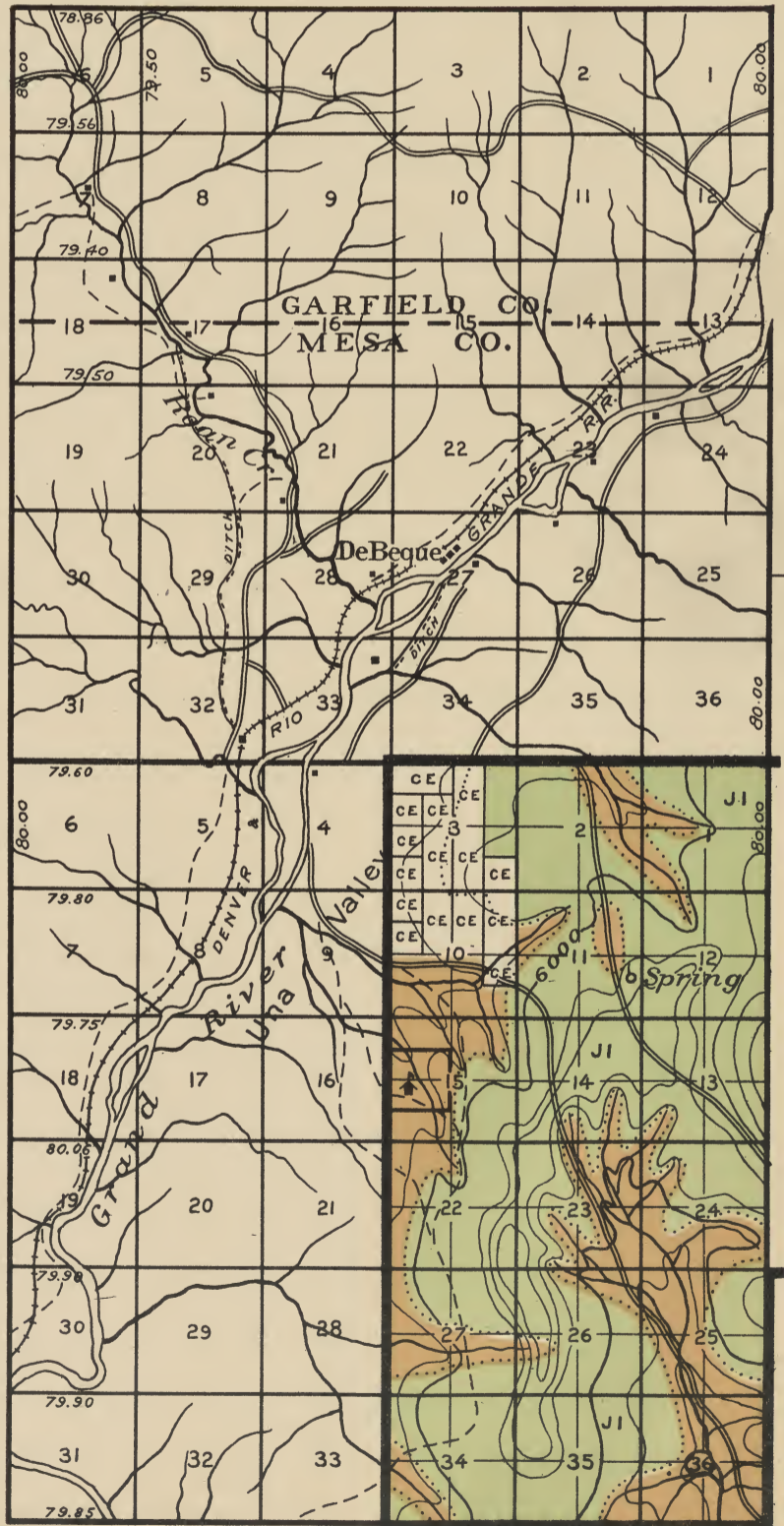
D129 = *Pseudotsuga taxifolia*, average stand 29,000 B.M. per acre

Q612 = *Quercus agrifolia*, average stand 12 cords per acre

T67 = *Thuja plicata*, average stand 7 tele-poles per acre

P0	<i>Pinus murrayana</i>	Lodgepole Pine
1	<i>flexilis</i>	Limber Pine
2	<i>monticola</i>	Western White Pine
3	<i>lambertiana</i>	Sugar Pine
4	<i>ponderosa</i>	Yellow Pine
5	<i>coulteri</i>	Coulter Pine
6	<i>sabiniana</i>	Gray Pine
7	<i>jeffreyi</i>	Jeffrey Pine
8	<i>radiata</i>	Monterey Pine
9	<i>attenuata</i>	Knobcone Pine
B2	<i>strobiformis</i>	Mexican White Pine
5	<i>albicaulis</i>	White-bark Pine
6	<i>torreyana</i>	Torrey Pine
7	<i>edulis</i>	Pinon
9	<i>monophylla</i>	Single-leaf Pinon
A1	<i>Abies magnifica</i>	Magnificent Fir
2	<i>concolor</i>	White Fir
3	<i>shastensis</i>	Shasta Fir
4	<i>nobilis</i>	Noble Fir
5	<i>lasiocarpa</i>	Alpine Fir
6	<i>grandis</i>	Lowland Fir
7	<i>arizonica</i>	Arizona Cork Fir
8	<i>amabilis</i>	Lovely Fir
9	<i>venusta</i>	Bristle-cone Fir
S2	<i>Picea engelmanni</i>	Engelmann Spruce
3	<i>parryana</i>	Blue Spruce
5	<i>breweriana</i>	Weeping Spruce
6	<i>sitchensis</i>	Sitka Spruce
D1	<i>Pseudotsuga taxifolia</i>	Douglas Fir (Red)
5	<i>macrocarpa</i>	Bigcone Spruce
H5	<i>Tsuga mertensiana</i>	Black Hemlock
6	<i>heterophylla</i>	Western Hemlock
R1	<i>Sequoia sempervirens</i>	Redwood
5	<i>washingtoniana</i>	Bigtree
C5	<i>Chamaecyparis nootkatensis</i>	Yellow Cedar
6	<i>lawsoniana</i>	Port Orford Cedar
T6	<i>Thuja plicata</i>	Red Cedar
L5	<i>Larix lyallii</i>	Alpine Larch
7	<i>occidentalis</i>	Western Larch
O5	<i>Libocedrus decurrens</i>	Incense Cedar
K5	<i>Cupressus macnabiana</i>	Maenab Cypress
6	<i>macrocarpa</i>	Monterey Cypress
7	<i>arizonica</i>	Arizona Cypress
8	<i>goveniana</i>	Gowen Cypress
J1	<i>Juniperus utahensis</i>	Utah Juniper
2	<i>pachyphloea</i>	Alligator Juniper
4	<i>occidentalis</i>	Western Juniper
5	<i>sabinoidea</i>	Mountain Juniper
7	<i>californica</i>	California Juniper
9	<i>monosperma</i>	One seed Juniper
Q0	<i>Quercus chrysolepis</i>	Canyon Live Oak
1	<i>californica</i>	California Black Oak
2	<i>lobata</i>	California White Oak
3	<i>douglasii</i>	Blue Oak
4	<i>garryana</i>	Pacific Post Oak
5	<i>wislizeni</i>	Highland Oak
6	<i>agrifolia</i>	California Live Oak
7	<i>gambelii</i>	Gambel Oak
8	<i>densiflora</i>	California Tanbark Oak
9	<i>engelmanni</i>	Engelmann Oak
M2	<i>Acer macrophyllum</i>	Oregon Maple
5	<i>glabrum</i>	Dwarf Maple
9	<i>negundo californicum</i>	California Boxelder
W0	<i>Populus trichocarpa</i>	Black Cottonwood
2	<i>fremontii</i>	Fremont Cottonwood
5	<i>tremuloidea</i>	Aspen
7	<i>angustifolia</i>	Narrowleaf Cottonwood.
F1	<i>Fraxinus pennsylvanica</i>	Red Ash
6	<i>oregona</i>	Oregon Ash
8	<i>lanceolata</i>	Green Ash
U1	<i>Prunus demissa</i>	Western Choke Cherry
Y7	<i>Platanus wrightii</i>	Arizona Sycamore
8	<i>racemosa</i>	California Sycamore
X0	<i>Salix lasiandra</i>	Western Black Willow
2	<i>sessilifolia</i>	Silverleaf Willow
9	<i>amygdaloides</i>	Almondleaf Willow





T. 8 S.

39° 20'

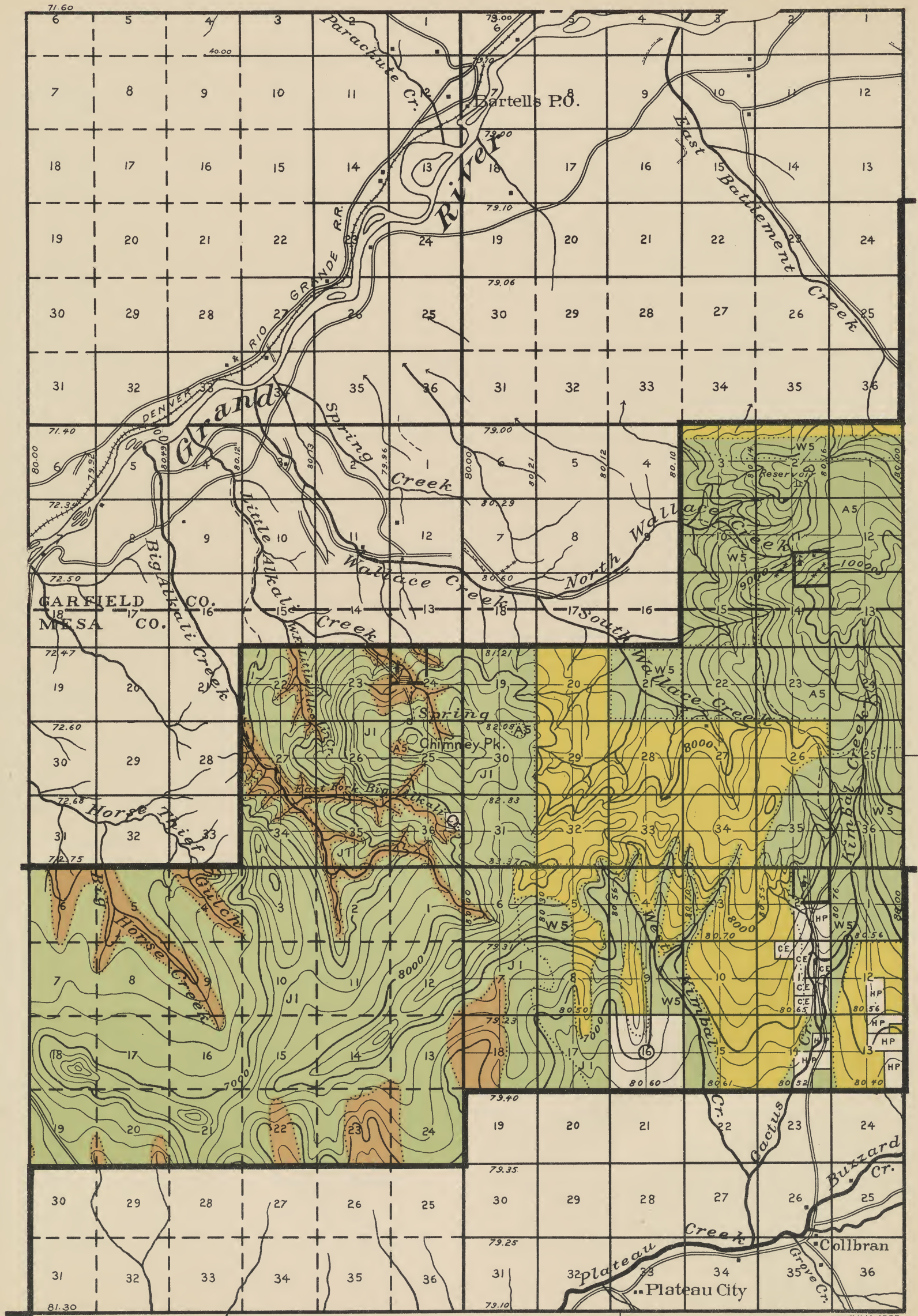
T. 9 S.

108° 10'

BATTLEMENT

R. 97 W.

JULY, 1908



T. 7 S.

T. 8 S.

39' 20"

T. 9 S.

R. 96 W.

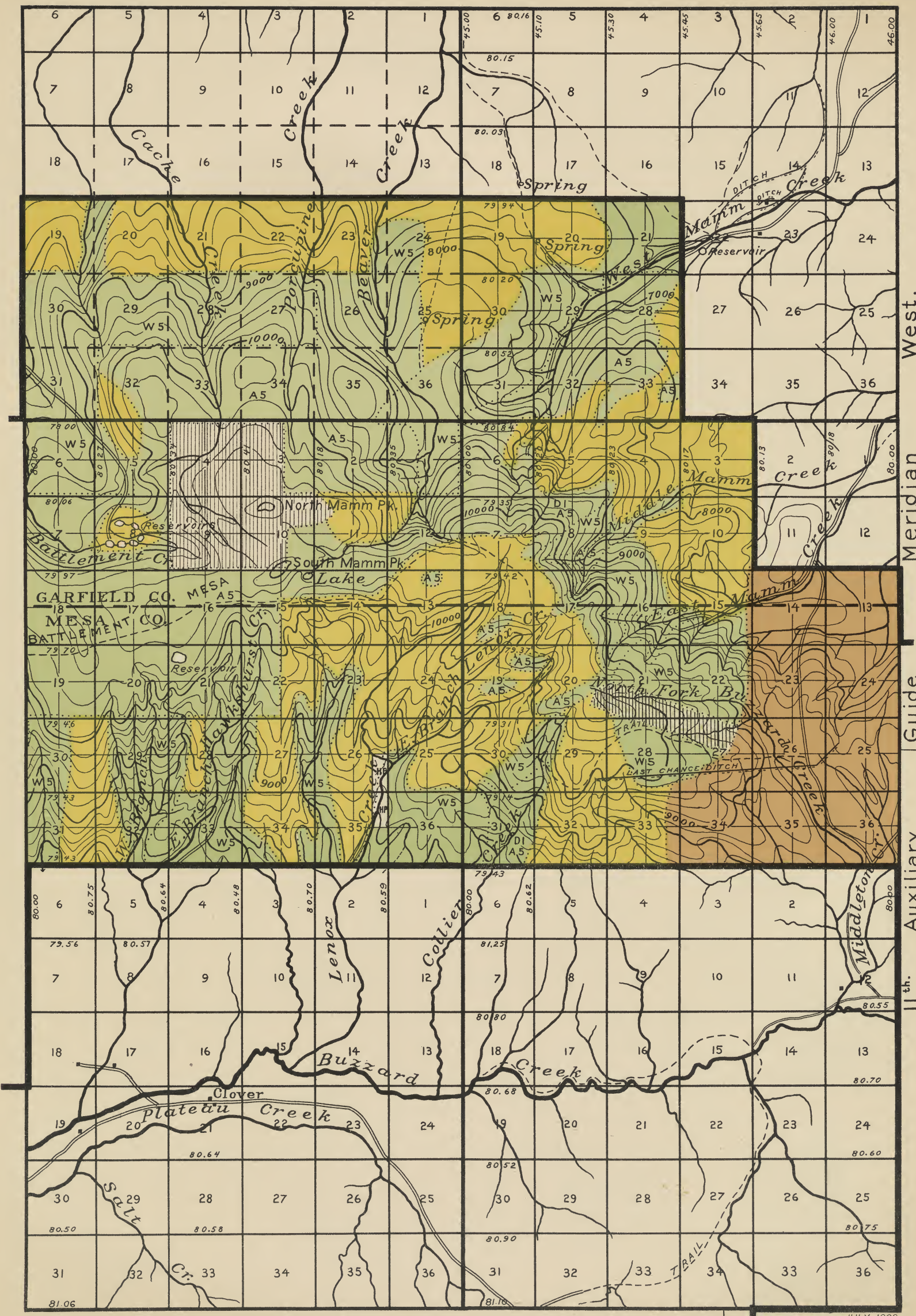
R. 95 W.

108' 00'

BATTLEMENT

JULY, 1908





T. 7 S.

West.
Meridian

T. 8 S.

Guide
Auxiliary

T. 9 S.

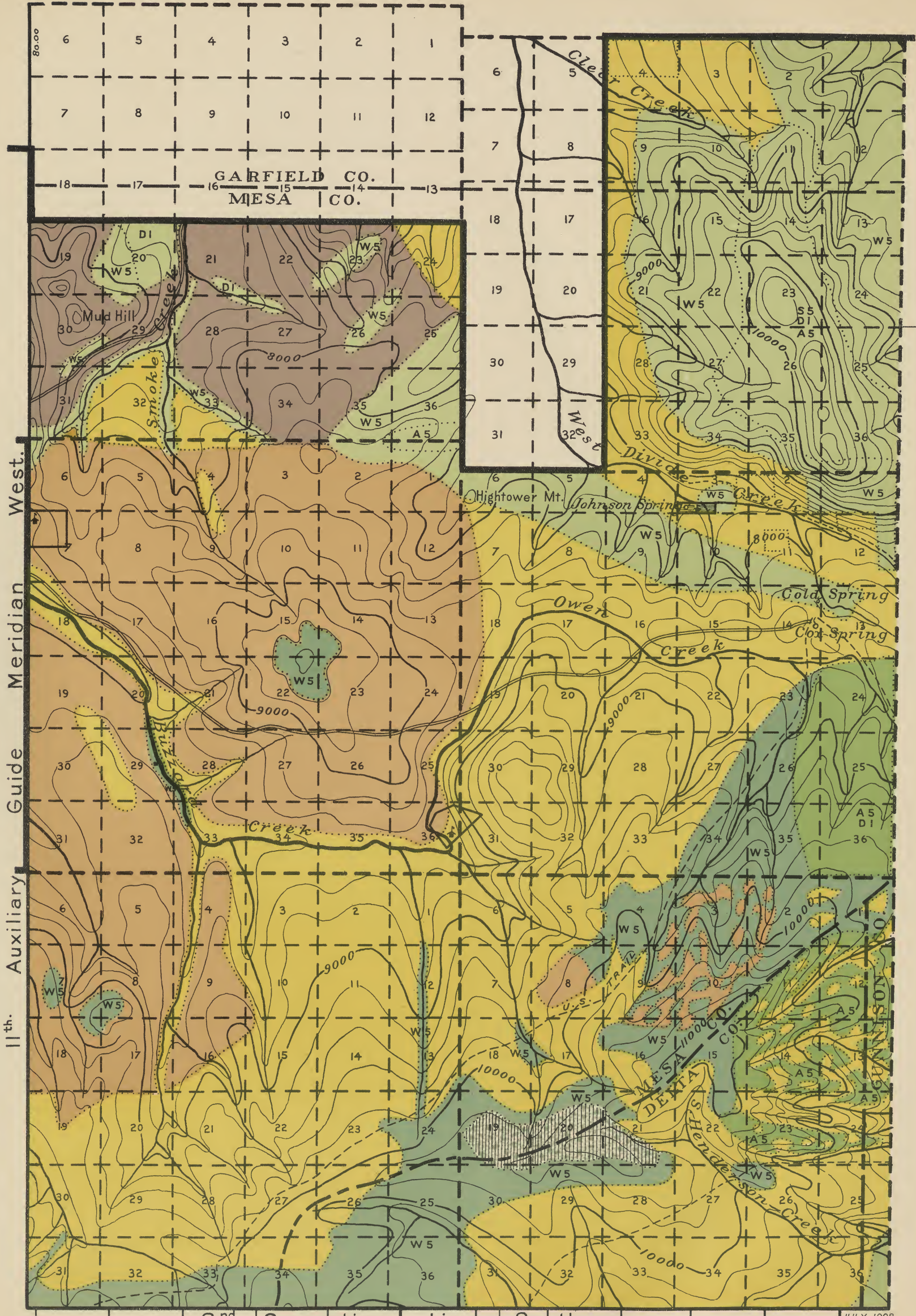
JULY, 1908

107° 45'

BATTLEMENT

R. 94 W.

R. 93 W.



West.
Meridian
Guide
Auxiliary
11th.

T. 8 S.

39° 20'

T. 9 S.

T. 10 S.

GARFIELD CO.
MESA CO.

MESA CO.
DEXIA CO.

2nd Correction Line South.

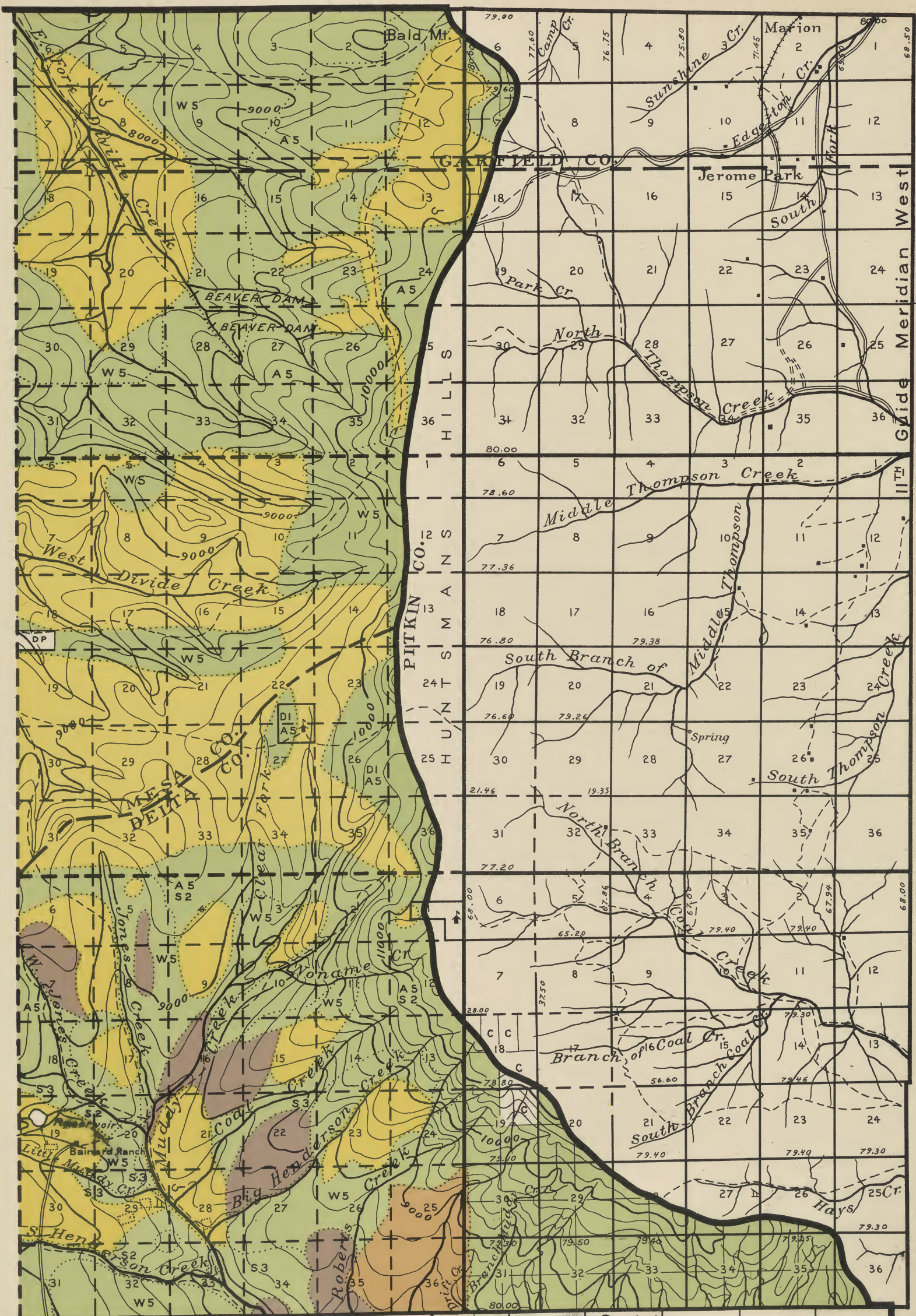
JULY, 1908

BATTEMENT

R. 92 W.

R. 91 W.

107° 35'



T. 8 S.

39° 20'

T. 9 S.

T. 10 S.

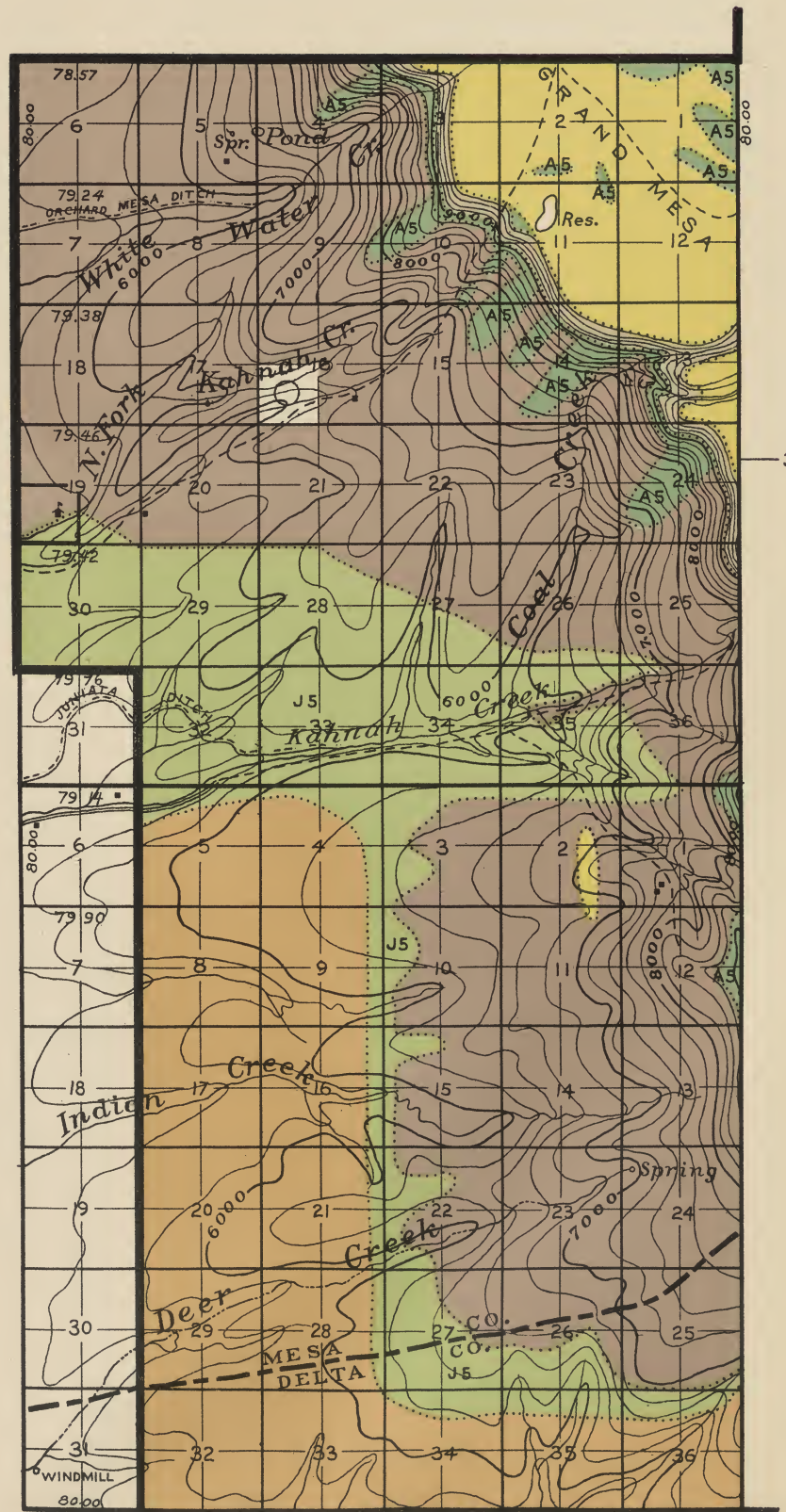
2 1/2 in. Correction Line South. 107° 25'

JULY, 1908

BATTLEMENT

R. 90 W.

R. 89 W.



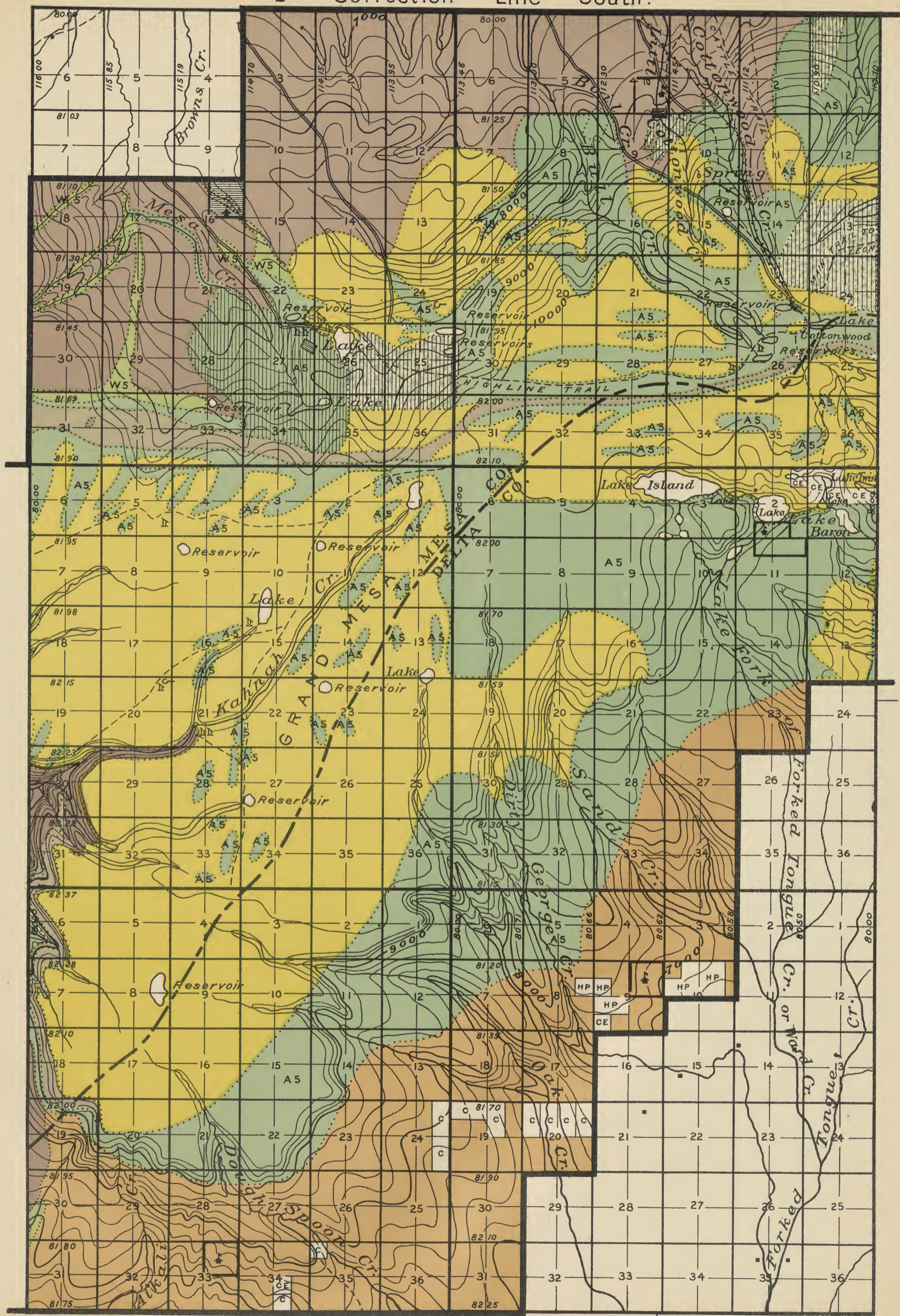
T. 12 S.
39°00'

T. 13 S.

108°10' BATTLEMENT

R. 97 W.

2nd Correction Line South.



T. 11 S.

T. 12 S

T. 13 S.

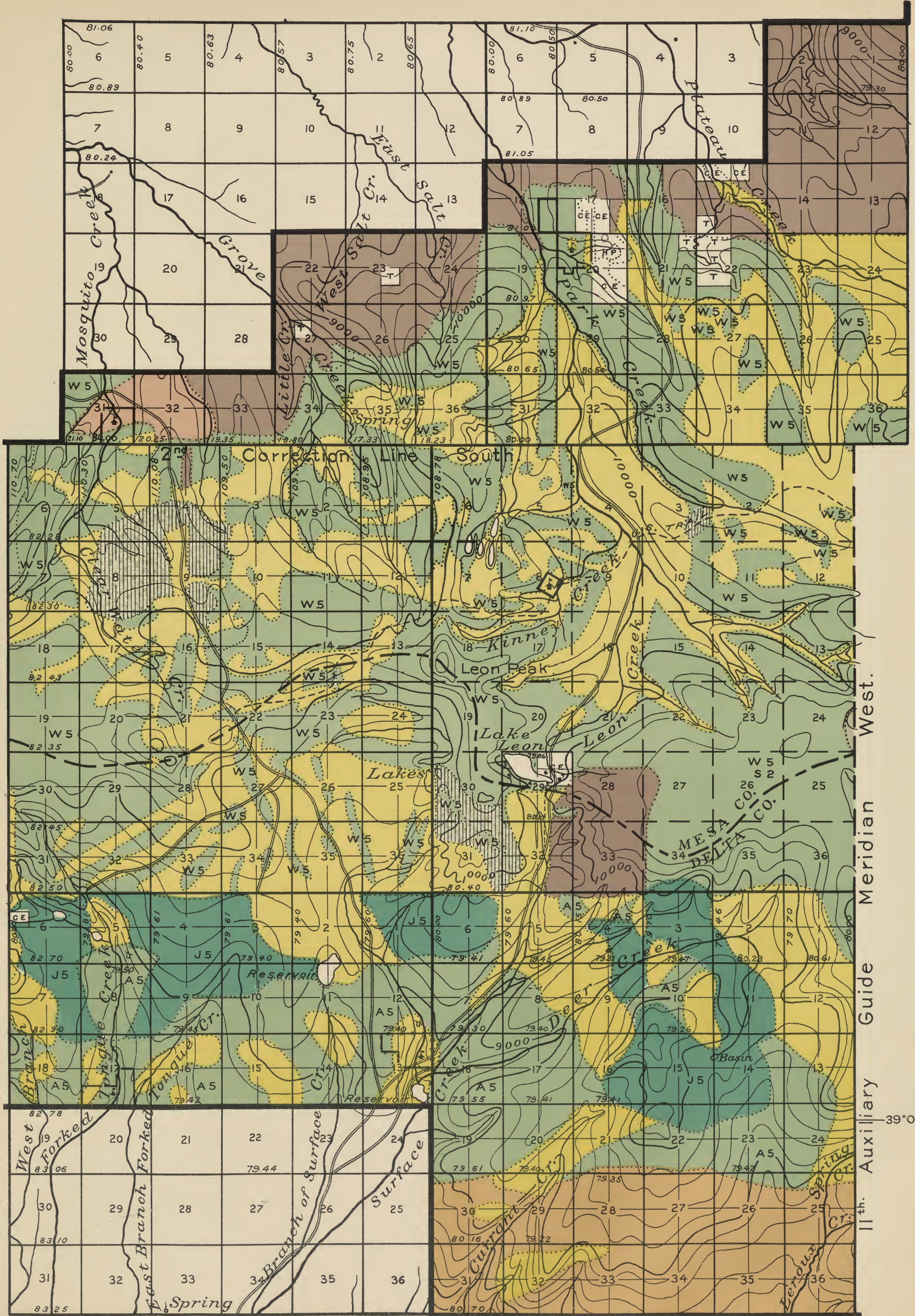
R. 96 W.

R. 95 W.

BATTLEMENT

JULY, 1908

108°00'



T. 10 S.

T. 11 S.

T. 12 S.

West. Meridian Guide Auxiliary

JULY, 1908

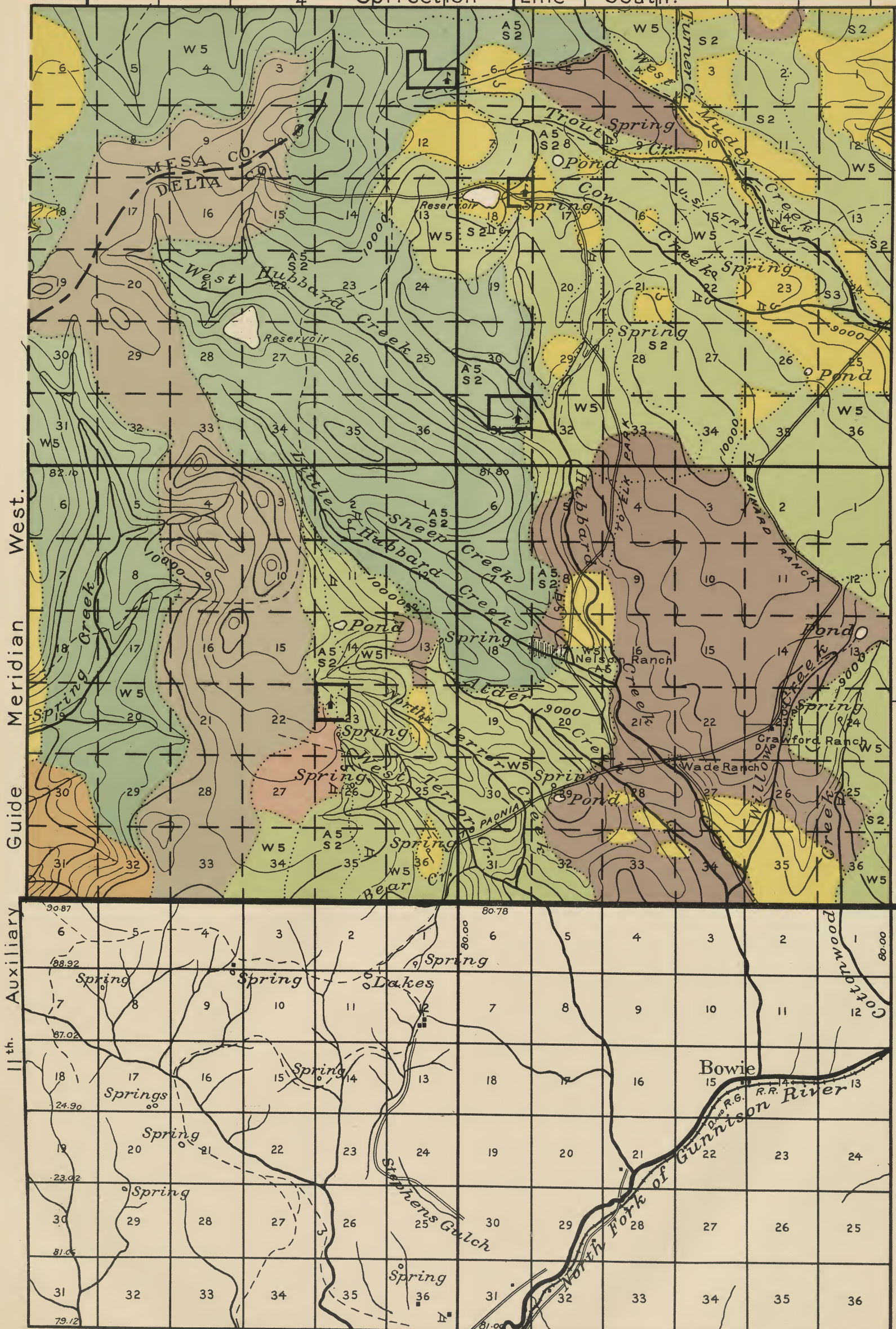
107° 45'

R. 94 W.

R. 93 W.

BATTEMENT

2nd Correction Line South.



T. 11 S.

T. 12 S.

T. 13 S.

Meridian West.

Meridian Guide

Auxiliary

11th.

R. 92 W.

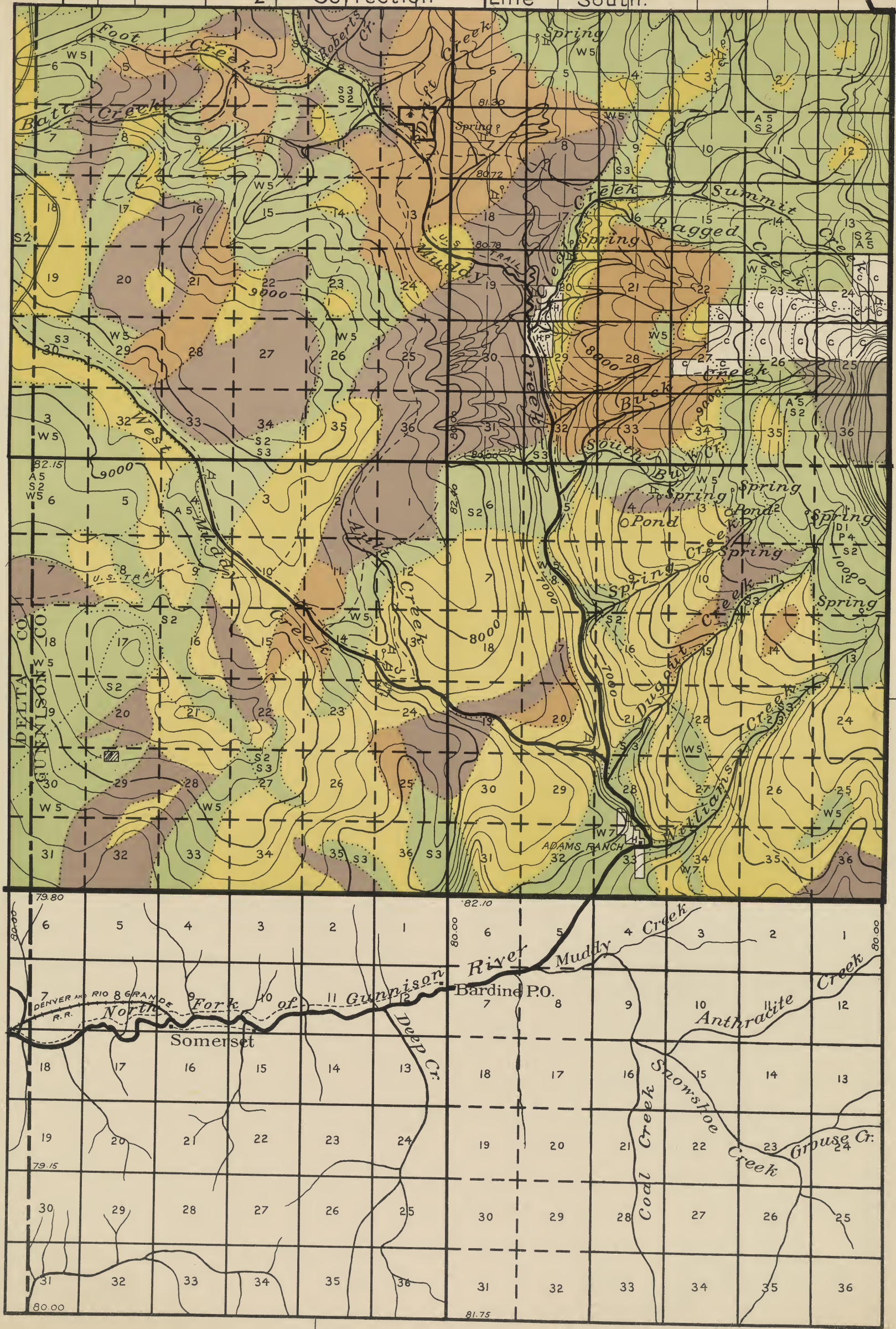
R. 91 W.

BATTLEMENT

107° 35'

JULY, 1908

2nd. Correction Line South.



T. 11 S.

T. 12 S.
39° 00'

T. 13 S.

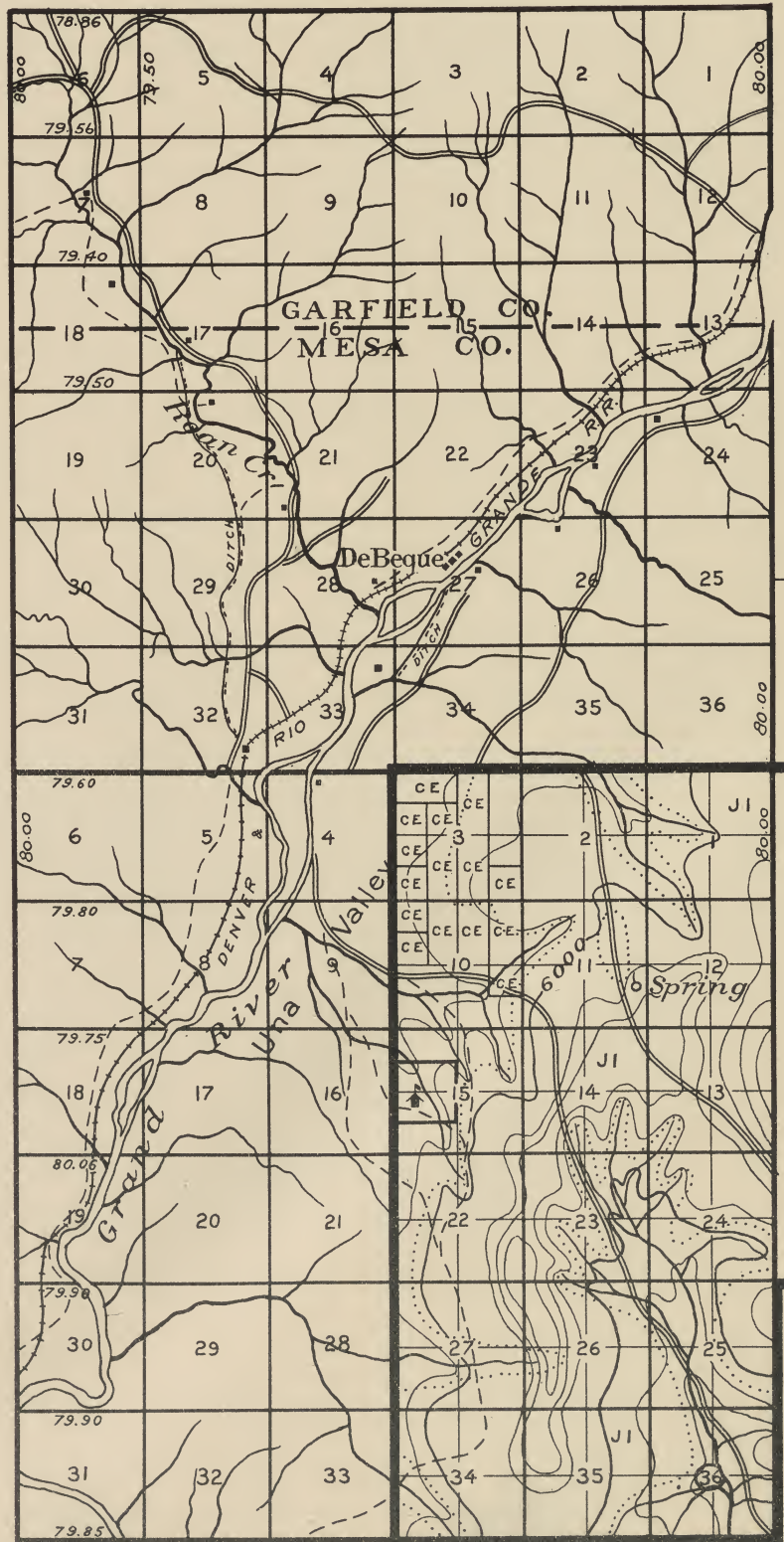
R. 90 W.

R. 89 W.

BATTELEMENT

JULY, 1908





T. 8 S.

39° 20'

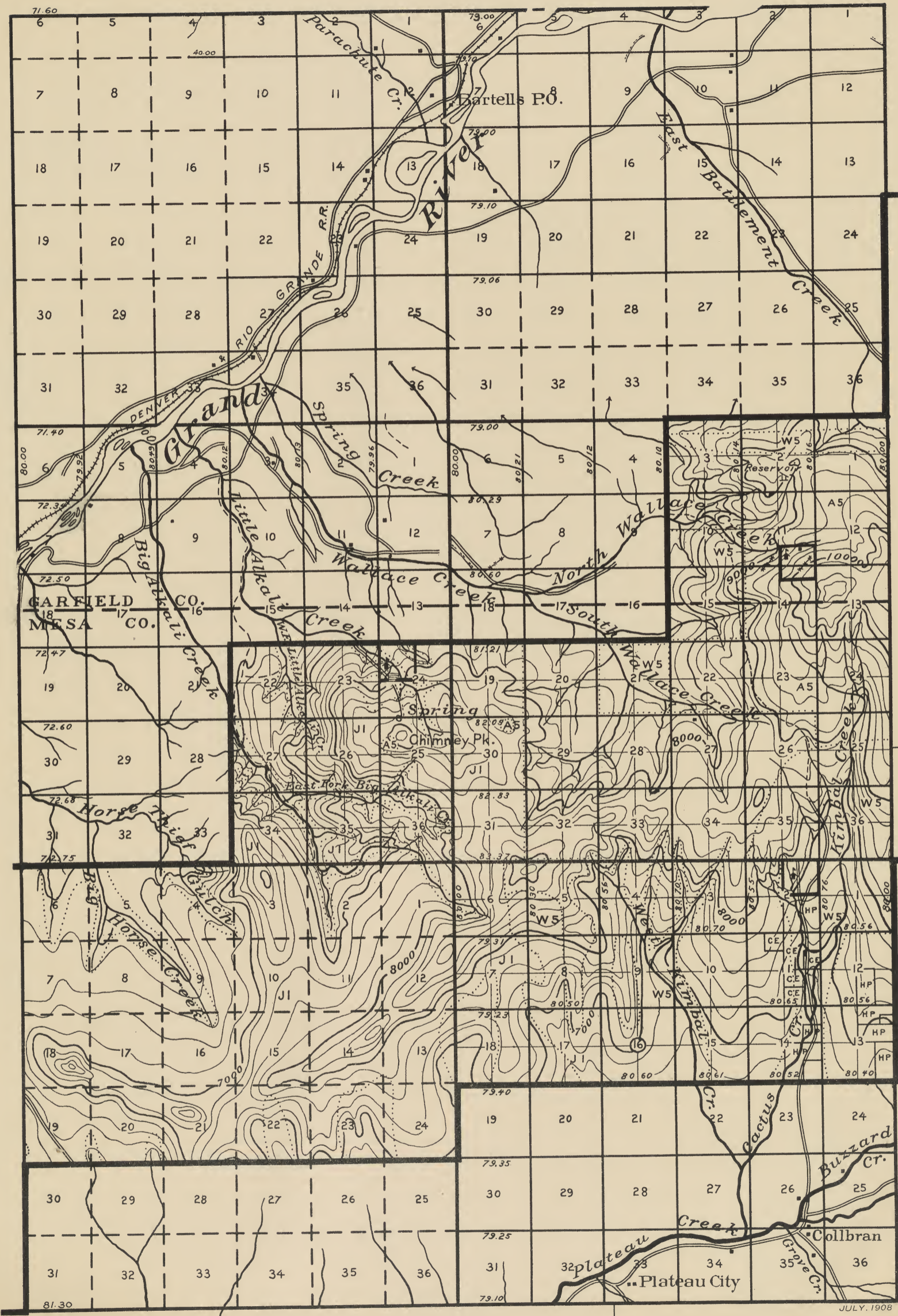
T. 9 S.

108° 10'

BATTLEMENT

R. 97 W.

JULY, 1908



T. 7 S.

T. 8 S.

39°20'

T. 9 S.

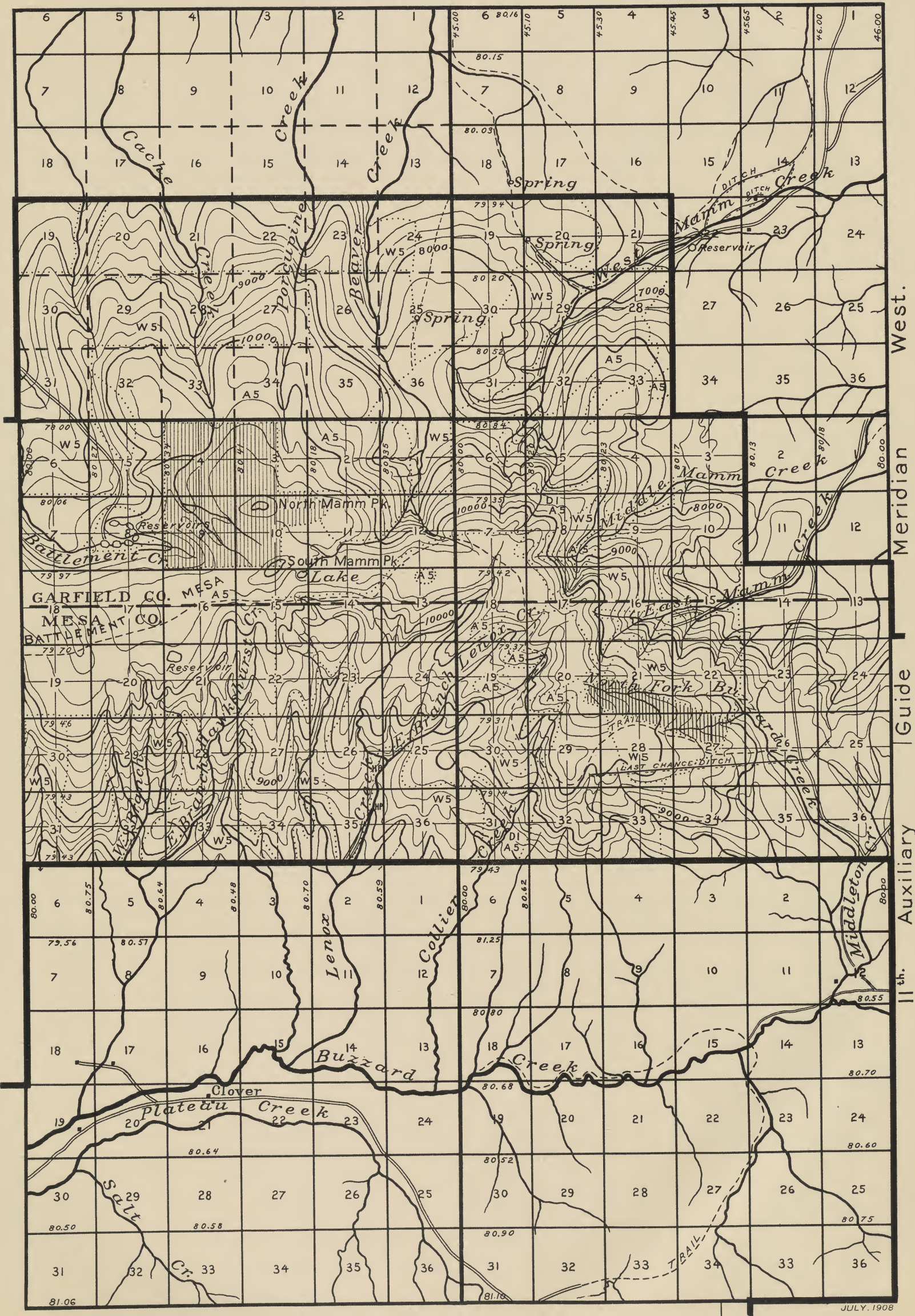
JULY, 1908

108° 00'

BATTEMENT

R. 96 W.

R. 95 W.



T. 7 S.

West.

Meridian

T. 8 S.

Guide

39° 20'

Auxiliary

T. 9 S.

11th.

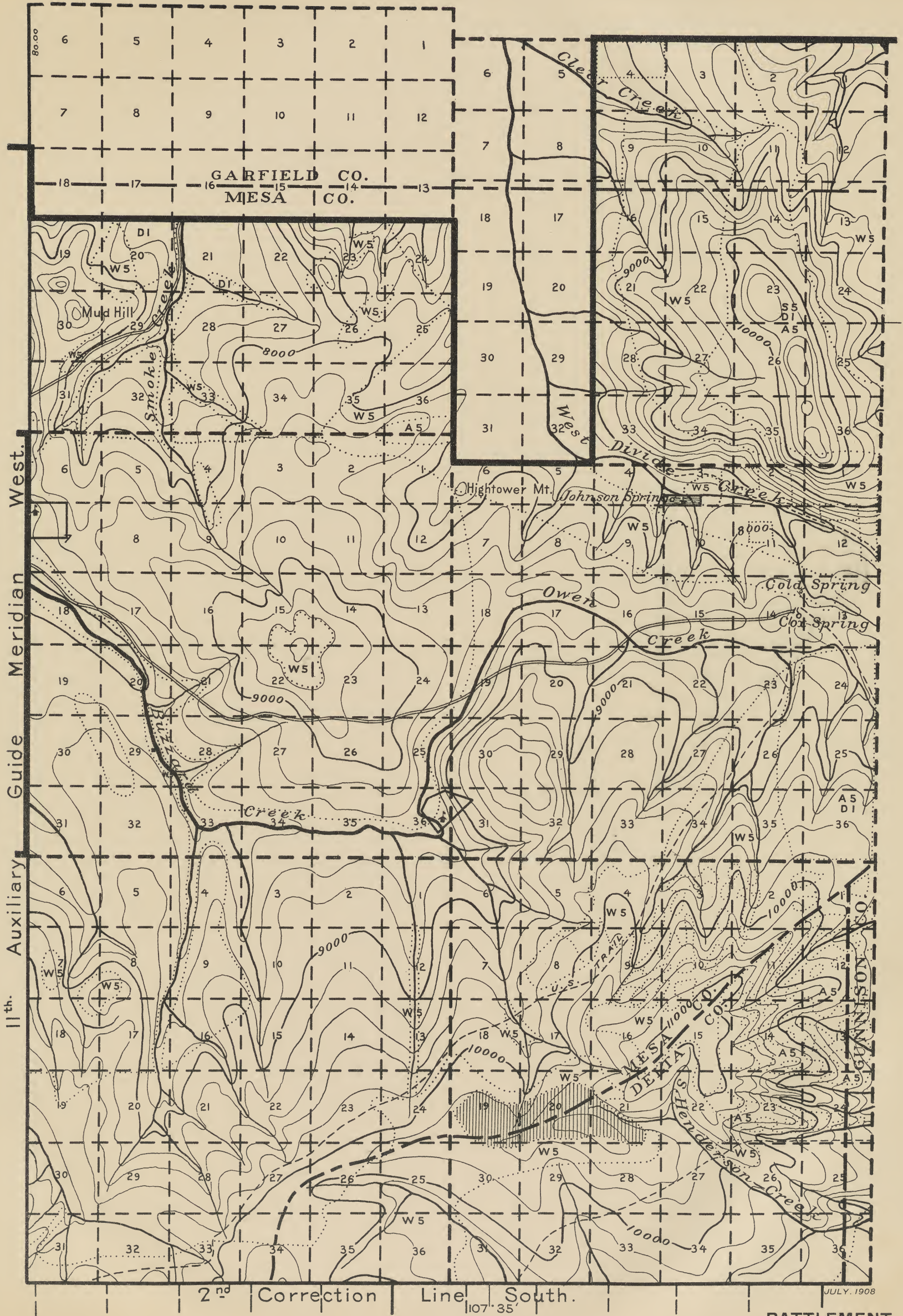
JULY, 1908

107° 45'

BATTLEMENT

R. 94 W.

R. 93 W.



West.
Meridian
Guide
Auxiliary
11th.

T. 8 S.

T. 9 S.

T. 10 S.

GARFIELD CO.
MESA CO.

MESA CO.
DETA CO.

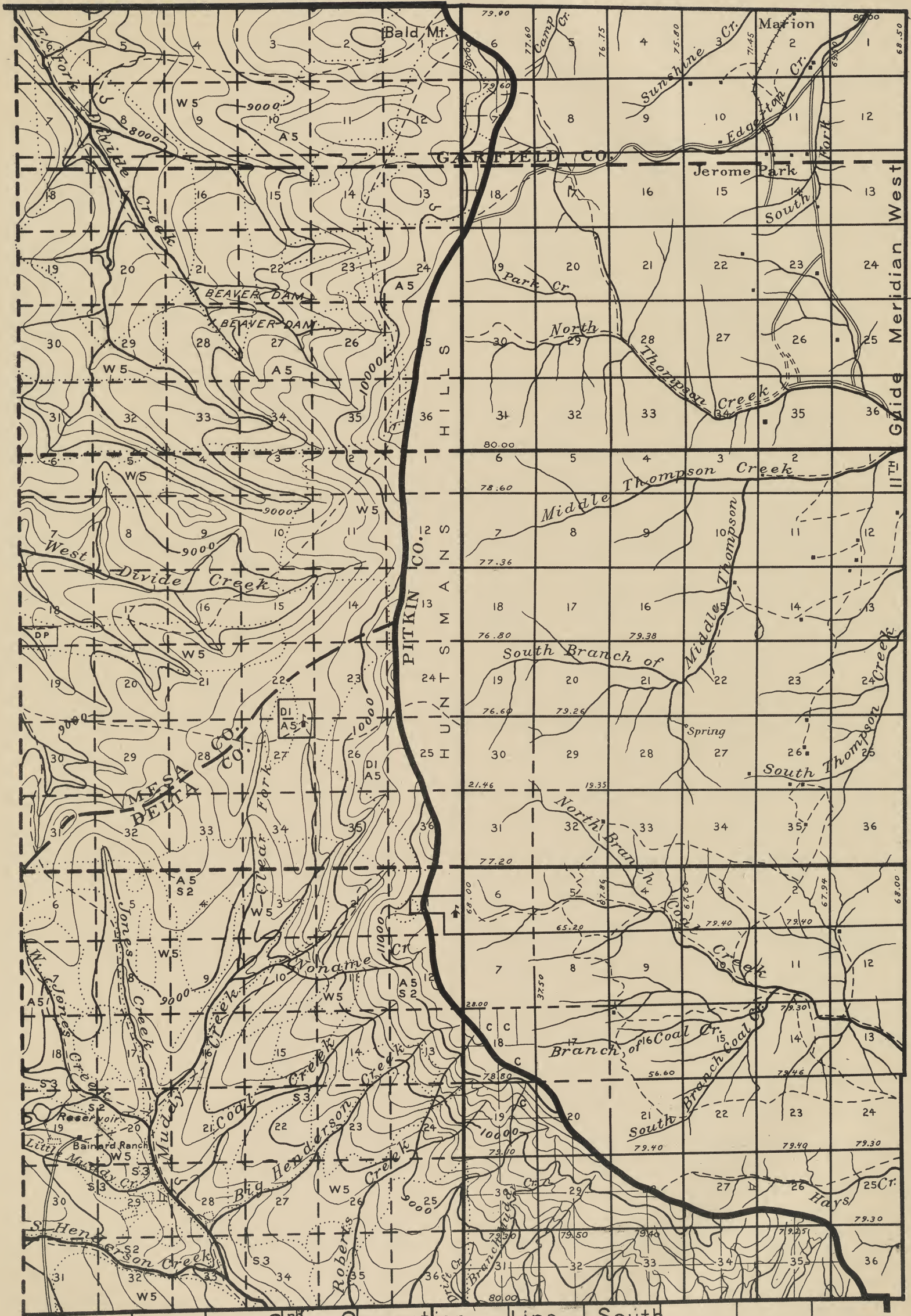
2nd Correction Line South.
107th 35'

JULY, 1908

BATTLEMENT

R. 92 W.

R. 91 W.



T. 8 S.

39° 20'

T. 9 S.

T. 10 S.

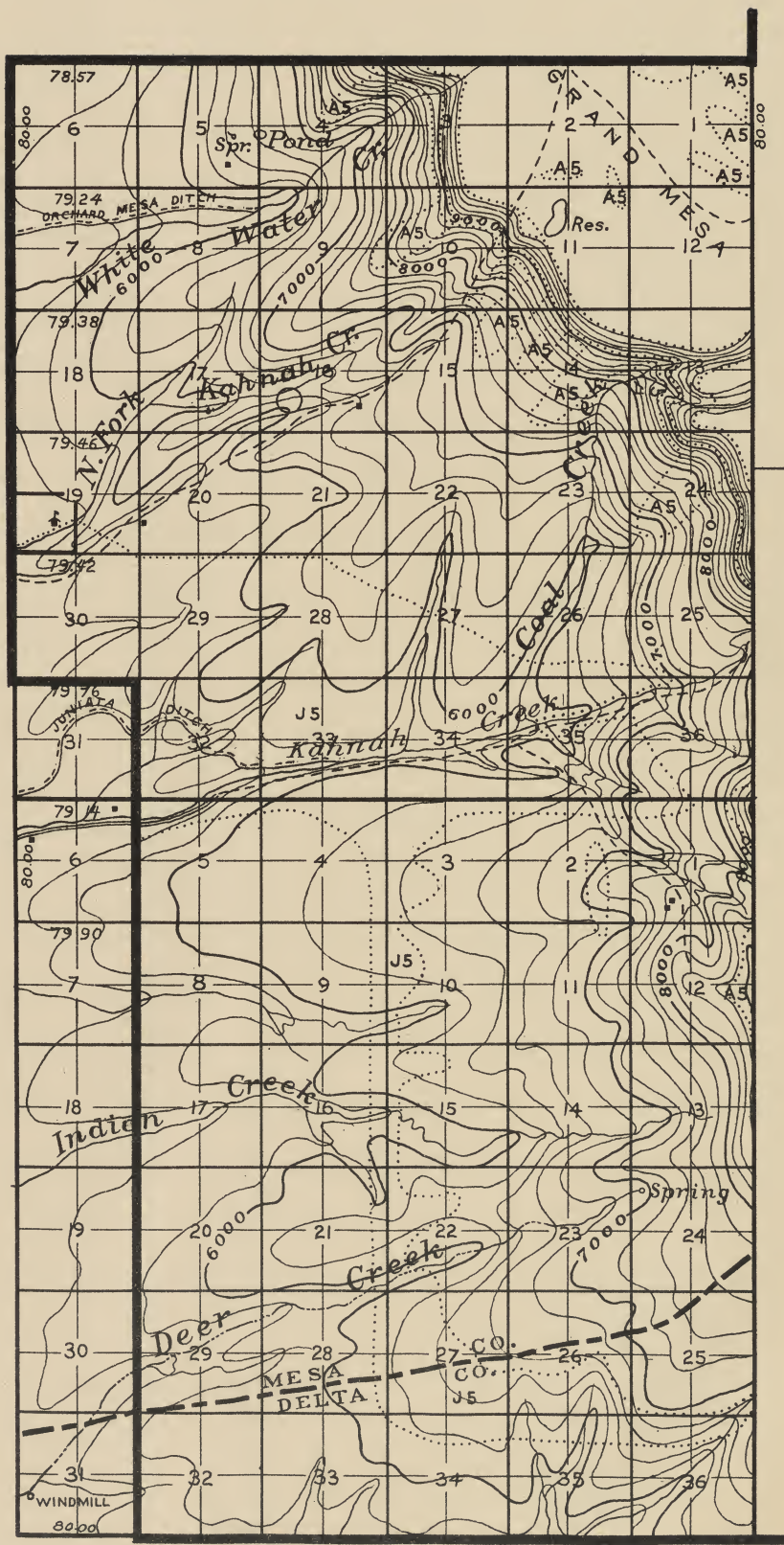
2 in. Correction Line South. 107° 25'

JULY, 1908

BATTLEMENT

R. 90 W.

R. 89 W.



T. 12 S.
39°00'

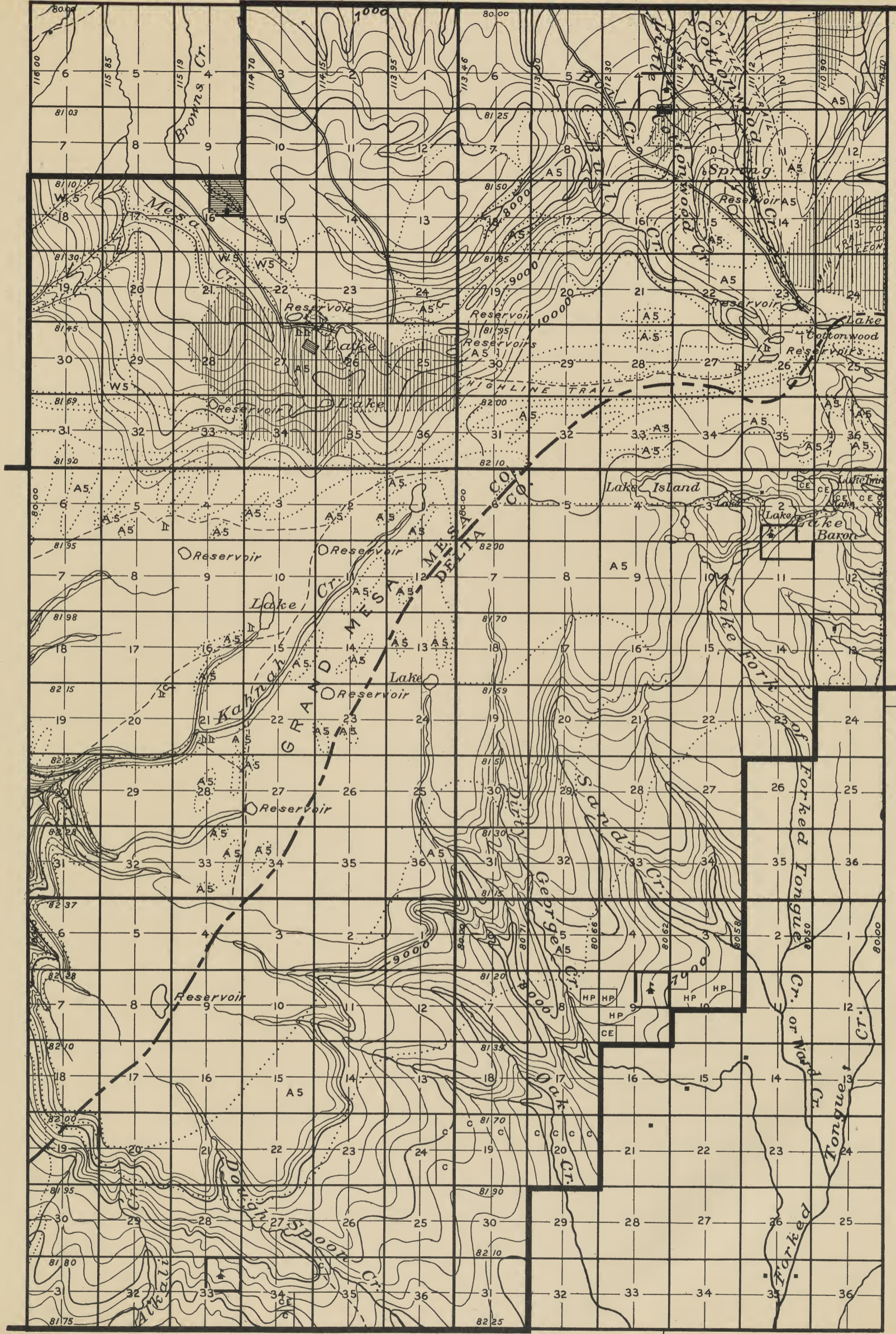
T. 13 S.

108°10' BATTLEMENT

R. 97 W.



2nd Correction Line South.



T. 11 S.

T. 12 S.

39'00"

T. 13 S.

R. 96 W.

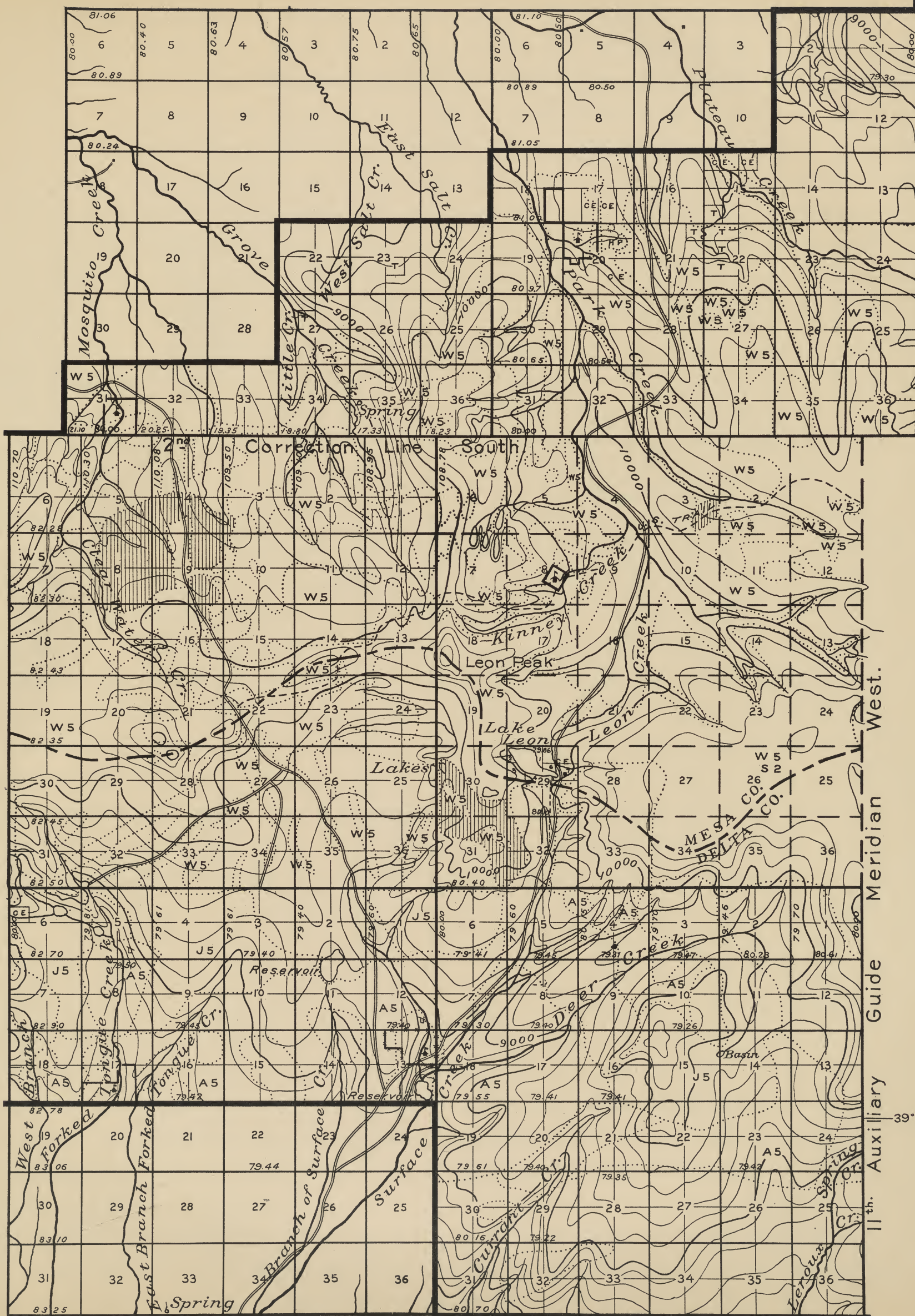
R. 95 W.

BATTLEMENT

108'00"

JULY, 1908





T. 10 S.

T. 11 S.

T. 12 S.

West. Meridian Guide Meridian Auxiliary

JULY, 1908

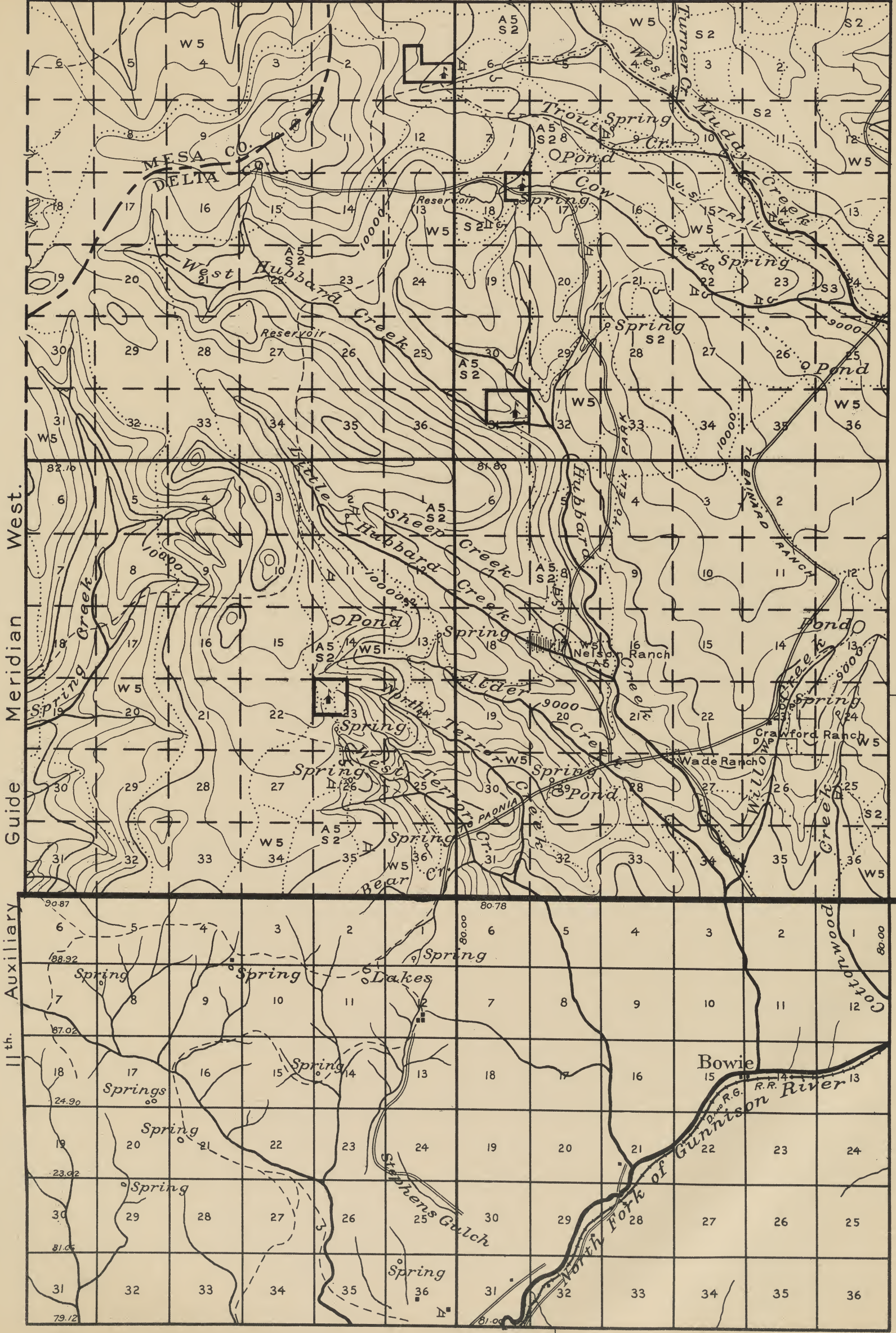
107° 45'

R. 94 W.

R. 93 W.

BATTLEMENT

2nd Correction Line South.



West. Meridian Guide

11th. Auxiliary

T. 11 S.

T. 12 S. 39'00"

T. 13 S.

R. 92 W.

R. 91 W.

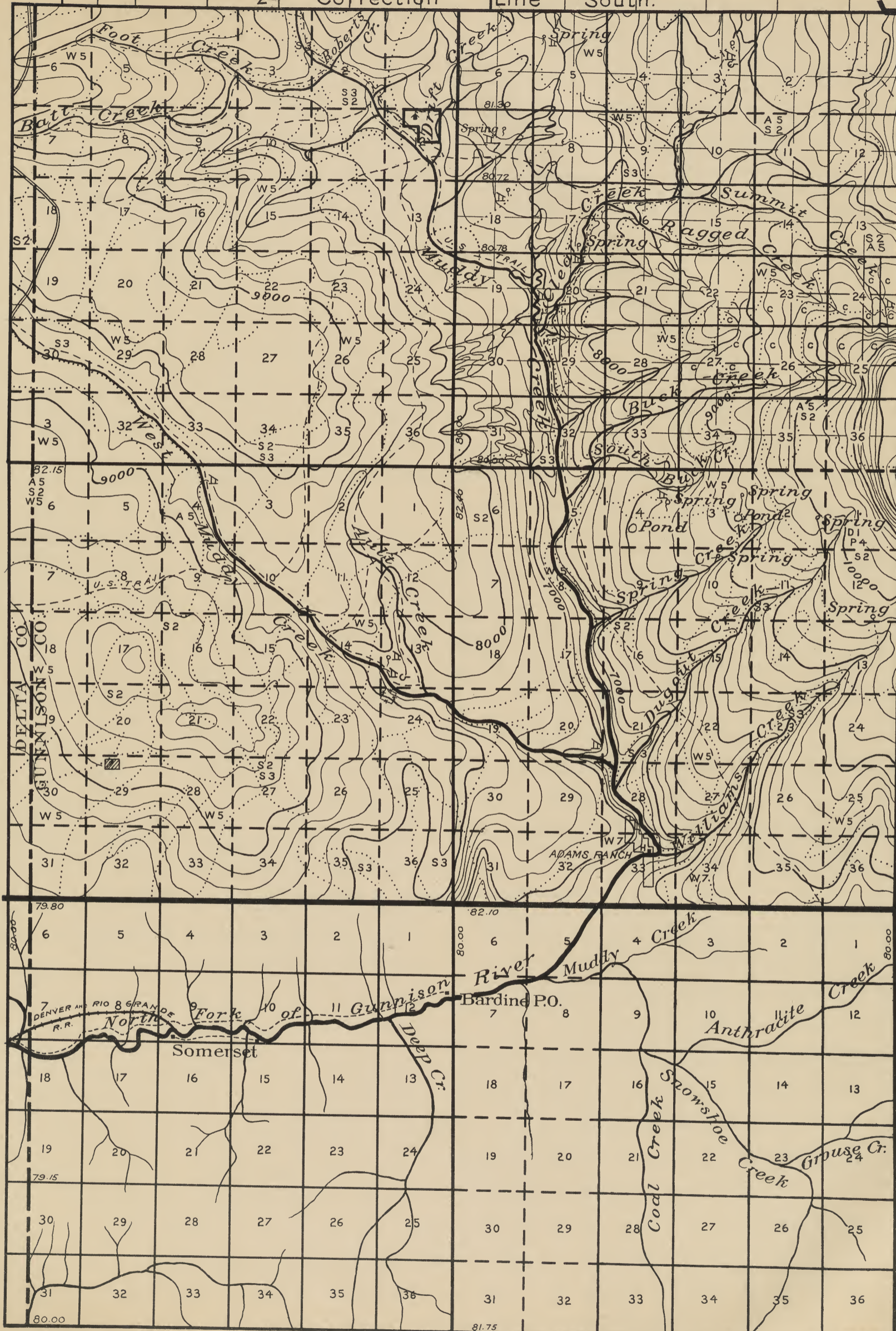
BATTLEMENT

107° 35'

JULY, 1908



2nd. Correction Line South.



T. 11 S.

T. 12 S.

T. 13 S.

107° 25'

JULY, 1908

R. 90 W.

R. 89 W.

BATTELEMENT

