

AIRCRAFT ACTION REPORT

RESTRICTED
(Reclassify when
filled out)

CONFIDENTIAL

I. GENERAL

(a) Unit Reporting VC-97 (b) Based on or at USS MAKASSAR STRAIT (CVT-91) (c) Report No. 9
 (d) Take off: Date 14 April 1945 Time (LZT) 1415 (Zone); Lat. 22-49 Long. 125-49 E
 (e) Mission STRIKE ISHIGAKI (f) Time of Return 1920 (Zone)

II. OWN AIRCRAFT OFFICIALLY COVERED BY THIS REPORT.

TYPE (a)	SQUADRON (b)	NUMBER			BOMBS AND TORPEDOES CARRIED (PER PLANE) (f)	FUZE, SETTING (g)
		TAKING OFF (c)	ENGAGING ENEMY A/C (d)	ATTACKING TARGET (e)		
F4U-2	VC-97	8	0	8	1600 rds. 50 cal. ammo. 6-5" HB Rockets	Inst.

III. OTHER U. S. OR ALLIED AIRCRAFT EMPLOYED IN THIS OPERATION.

TYPE	SQUADRON	NUMBER	BASE	TYPE	SQUADRON	NUMBER	BASE

IV. ENEMY AIRCRAFT OBSERVED OR ENGAGED (By Own Aircraft Listed in II Only).

(a) TYPE	(b) NO. OBSERVED	(c) NO. ENGAGING OWN A/C	(d) TIME ENCOUNTERED	(e) LOCATION OF ENCOUNTER	(f) BOMBS, TORPEDOES CARRIED; GUNS OBSERVED	(g) CAMOUFLAGE AND MARKING
Tony	1	1	1730(1) (ZONE)	off Ishigaki Shima		Usual markings
			(ZONE)			
			(ZONE)			

(h) Apparent Enemy Mission(s) To engage our VF
 Did Any Part of
 (i) Encounter(s) Occur in Clouds? No If so, Describe Clouds _____
(YES OR NO) (BASE IN FEET, TYPE AND TENTHS OF COVER)
 Time of Day and Brilliance
 (j) of Sun or Moon 1730(1) - good visibility (k) Visibility 10
(NIGHT, BRIGHT MOON; DAY, OVERCAST; ETC.) (MILES)

V. ENEMY AIRCRAFT DESTROYED OR DAMAGED IN AIR (By Own Aircraft Listed in II Only).

(a) TYPE ENEMY A/C	(b) DESTROYED OR DAMAGED BY:				(c) WHERE HIT, ANGLE	(d) DAMAGE CLAIMED
	TYPE A/C	SQUADRON	PILOT OR GUNNER	GUNS USED		
Tony	F4U-2	VC-97	Lt. (jg) R. D. THOMPSON, USNR Lt. (jg) W. F. EDEN USNR		Tail, See Narrative	Slight

AIRCRAFT ACTION REPORT

RESTRICTED
(Reclassify when
filled out)
CONFIDENTIAL

REPORT No. 9

VI. LOSS OR DAMAGE, COMBAT OR OPERATIONAL, OF OWN AIRCRAFT (of those listed in II only).

(a) TYPE OWN A/C	(b) SQUADRON	(c) CAUSE: TYPE ENEMY A/C, TYPE GUN, OR OPERATIONAL CAUSE	(d) WHERE HIT, ANGLE (List armor, self-sealing tanks, equipment hit)	(e) EXTENT OF LOSS OR DAMAGE, (Give Bureau serial number of planes destroyed)
1 M-2	VC-97	Shot down by enemy AA		STRIKE Bu. No. 74085
2				
3				
4				
5				
6				
7				
8				
9				
10				
11				
12				
13				
14				

VII. PERSONNEL CASUALTIES (in aircraft listed in II only; identify with planes listed in VI by Nos. at left).

(a) NO.	(b) SQUADRON	(c) NAME, RANK OR RATING	(d) CAUSE	(e) CONDITION OR STATUS
		None		

VIII. RANGE, FUEL, AND AMMUNITION DATA FOR PLANES RETURNING

(a) TYPE A/C	(b) MILES OUT	(c) MILES RETURN	(d) AV. HOURS IN AIR	(e) AV. FUEL LOADED	(f) AV. FUEL CONSUMED	(g) TOTAL AMMUNITION EXPENDED				(h) NO. OF PLANES RETURNING
						.30	.50	20MM	MM	
M-2	93	90	5.1	217	185		8250			

IX. ENEMY ANTI-AIRCRAFT ENCOUNTERED (Check one block on each line).

CALIBER	NONE	MEAGER	MODERATE	INTENSE
HEAVY — Time-fused shells, 75mm and over			X	
MEDIUM — Impact-fused shells, 20mm-50mm			X	
LIGHT — Machine gun bullets, 6.5mm-13.2mm				

X. COMPARATIVE PERFORMANCE, OWN AND ENEMY AIRCRAFT (use check list at left).

- SPEED, CLIMB,
at various altitudes
- TURN
- DIVES
- CEILINGS
- RANGE
- PROTECTION
- ARMAMENT

The encounter mentioned in "IV and V" does not permit any extensive comparison of performance except that, as stated later in the narrative, our VF were closing in on the Tony with their I.A.S. of 220 knots. The pilots following the Tony were confident they could have caught up with him except for their being low on ammo. and gasoline.

AIRCRAFT ACTION REPORT

RESTRICTED
(Reclassify when filled out)
CONFIDENTIAL

(OMIT THIS SHEET IF NO ATTACK WAS MADE)

REPORT No. 9

XI. ATTACK ON ENEMY SHIPS OR GROUND OBJECTIVES (By Own Aircraft Listed in II Only).

(a) Target(s) and Location(s) Ishigaki and Hagina Airfield (b) Time Over Target(s) 1525-1825(10) Zone 1
(FOR SHIPS INCLUDE ALL IN AREA UNDER ATTACK)

(c) Clouds Over Target 2/10 coverage at 4,000 feet.
(BASE IN FEET, TYPE AND TENTHS OF COVER)

(d) Visibility of Target Good (e) Visibility 10
(CLEAR, HAZY, PARTIALLY OBSCURED BY CLOUDS, ETC.) (MILES)

(f) Bombing Tactics: Type _____ Bomb Sight Used _____
(LEVEL, GLIDE OR DIVE) (TYPE)

Bombs Dropped per Run _____ Spacing _____ Altitude of Bomb Release _____
(NUMBER) (FEET) (FEET)

(g) Number of Enemy Aircraft Hit on Ground: Destroyed 25 Probably Destroyed _____ Damaged 8

(h) AIMING POINT	(i) DIMENSIONS OR TONNAGE	(j) NO. A/C ATTACKING (k) SQUADRON	(l) BOMBS AND AMMUNITION EXPENDED, EACH AIMING POINT	(m) NO. HITS On Aiming Point	(n) DAMAGE (None, slight, serious, destroyed or sunk)
1 Hagina Airfield, bldgs. planes, AA.		8 VF VC-97	42 R.P.'s 1650 rds. 50 cal.		See narrative
2 Ishigaki Airfield planes, AA positions		8 VF VC-97	5 R.P.'s 6600 rds. 50 cal.		See narrative
3					
4					
5					
6					
7					
8					

(o) RESULTS: (For all hits claimed on ship targets and for land targets of special interest, draw diagram, top or side view or both, as appropriate, showing type and location of hits. For all targets give location and effect of hits, and identify by numbers above. Use additional sheets if necessary).

See narrative

(p) Were Photographs Taken? No Photographs of Damage, When Taken, Should Be Attached By Staple.

Photo attached was taken by photo plane on 15 April 1945

AIRCRAFT ACTION REPORT

RESTRICTED
(Reclassify when
filled out)
CONFIDENTIAL

REPORT No. 9

XII. TACTICAL AND OPERATIONAL DATA. (Narrative and comment. Describe action fully and comment freely, following applicable items in check list at left. Use additional sheets if necessary.)

ENGAGEMENT WITH ENEMY

OWN AIRCRAFT

- Disposition
- Altitudes
- Speeds
- Approach Tactics
- Use of Cover, Deception
- Angles of Attack and Their Effectiveness
- Distance of Opening Fire
- Defense Tactics and Their Effectiveness

ENEMY AIRCRAFT

- Method of Locating, Distance
- Disposition
- Altitudes
- Speeds
- Approach Tactics
- Use of Cover, Deception
- Angles of Attack
- Distance of Opening Fire
- Defensive Tactics

COMMENTS AND RECOMMENDATIONS

- Own Weaknesses
- Enemy Weaknesses
- Offensive Tactics, Own
- " " " " " " , Enemy
- Defensive Tactics, Own
- " " " " " " , Enemy
- Flexible Gunnery, Own
- Escort Tactics
- Fighter Direction
- Use of Radar
- Night Fighting
- Recognition, Aircraft

ATTACK

OWN TACTICS

- Method of Locating Target
- Approach to Target
- Altitudes, Speeds
- Approach
- Dive
- Pull-Out
- Dive Angle
- Strafing
- Retirement
- Defensive Tactics
- Use of Jamming

DEFENSE, ENEMY

- Evasive Tactics, Ships
- Concealment
- Searchlights
- Night Fighter Tactics
- Use of Jamming

COMMENTS AND RECOMMENDATIONS

- Bombing Tactics
- Torpedo Tactics
- Effectiveness of Bombs, Torpedoes
- Selection of Targets
- Fuzing
- Strafing Tactics
- Defensive Tactics
- Use of Radar
- Reconnaissance
- Photography
- Briefing

OPERATIONAL

- Navigation
- Homing
- Rendezvous
- Recognition, Ships
- Communications
- Flight Operations
- Search and Tracking
- Base Operations
- Maintenance

Lt. John H. ANDREWS, USNR, led 8 FM-2's against targets of opportunity on Ishigaki Shima. Attacked were Hegina and Ishigaki Airfield. The planes parked and dispersed about them revetments, buildings and AA positions.

In the attack on Hegina, the field was pitted with rockets. One building burned and numerous others were seriously damaged. Several AA positions were strafed and silenced.

The principal target on Ishigaki Airfield consisted of aircraft parked and dispersed around the field. It was estimated that about 25 enemy aircraft were destroyed - 20 single engine and 5 twin engine. In addition, 8 twin engine aircraft were reported to be severely damaged.

Lt. (jg) William F. WATERS, USNR, flying in Lt. ANDREWS division, was hit by AA in his port wing. He succeeded in getting his plane out to sea about 6 miles from Ishigaki and made a water landing. Two planes of the group orbited his position until relieved by other planes of the task unit. He was picked up by a Dumbo PBM the next day.

In leaving the target area, a Tony made a high side run upon Lt. (jg) Welden T. EDES, USNR, and fired into his port wing. Then the Tony made an attempt to escape, and was followed by Lt. (jg) EDES, Lt. (jg) T. H. RIGGAN, USNR, and Lt. (jg) R. D. THOMPSON, USNR. They followed the Tony for about 40 miles and with an indicated air speed of 220 knots and were closing on him. However, they broke off because of lack of sufficient gasoline and ammunition. Prior to breaking away, however, EDES and THOMPSON got in a few bursts. Lt. (jg) THOMPSON secured a hit that apparently damaged the Tony slightly, and Lt. (jg) EDES thought that he obtained a hit on the Tony.

AIRCRAFT ACTION REPORT

RESTRICTED
(Reclassify when
filed out)
CONFIDENTIAL

REPORT No. 9

XIII. MATERIAL DATA. (Comment freely on performance or suitability, following check list at left.
Use additional sheets if necessary).

ARMAMENT

Guns, Gunsights
Turrets
Ammunition
Bombs, Torpedoes
Bomb Sights
Bomb Releases

No Comments.

COMMUNICATIONS

Radio, Radar
Homing Devices
Visual Signals
Codes, Ciphers

RECOGNITION

IFF
Signals
Battle Lights
Procedures

PROTECTION

Armor; Points and Angles
of Fire Needing Further
Protection
Leak Proofing

EMERGENCY EQUIPMENT

Parachutes
Life Belts, Life Rafts
Safety Belts
Emergency Kits
Rations, First Aid

NAVIGATIONAL EQUIPMENT

Compasses
Driftsights
Octants
Automatic Pilots
Charts
Field Lighting

INSTRUMENTS

Flight
Power Plant

OXYGEN SYSTEM

**CAMOUFLAGE AND
DECEPTION DEVICES**

STRUCTURE

Airframe
Control Surfaces
Control System
Dive Flaps
Landing Gear
Heating System
Flight Characteristics
At Various Loadings

POWER PLANT

Engines
Engine Accessories
Propellers
Lubricating System
Starters
Exhaust Dampers

HYDRAULIC SYSTEM

ELECTRICAL SYSTEM

Auxiliary Plant
Lights

FUEL SYSTEM

FLIGHT CLOTHING

MAINTENANCE

BASE FACILITIES

Plane Servicing Equipment
Personnel Facilities

REPORT PREPARED BY:

APPROVED BY:

W. H. BRADEN, Jr., Lt., USNR, AGI Officer.

**M. T. WHITTIER, Lt. Comdr., USNR,
Commanding Officer.**

14 April 1945

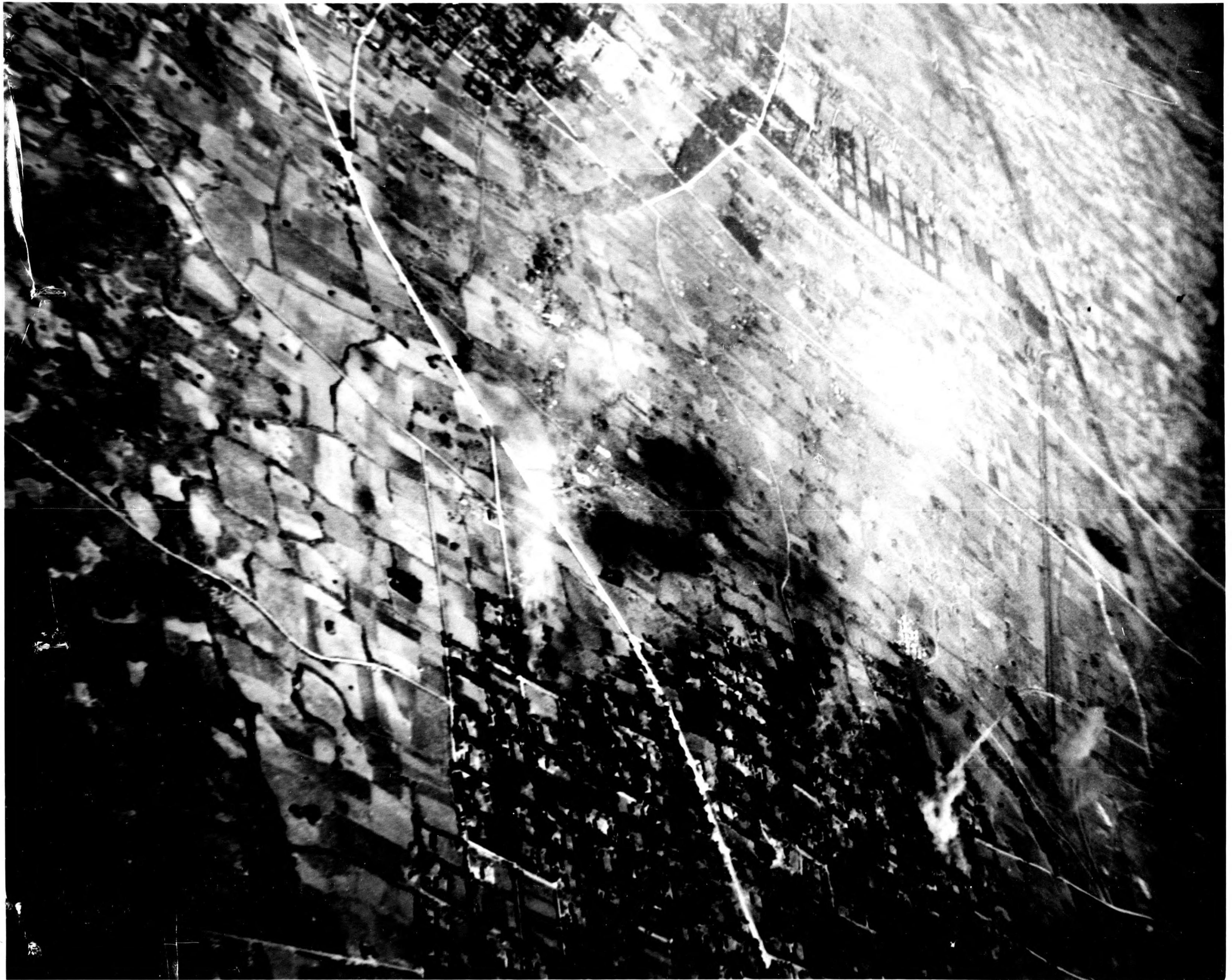
SIGNATURE

RANK AND DUTY

SIGNATURE

RANK AND DUTY

DATE



4-15-45 VIEW SHOWING PARTS OF ISHIGAKI TOWN & SHIKA TOWN (FOREGROUND) JOINED BY ROAD