

THE COLLECTION OF A CONNOISSEUR

BEAUTIFUL OLD CHINESE
PORCELAINS

The Private Collection of
the late

WILLIAM CHURCHILL OASTLER

1915

THE
JAMES A. THOMAS
COLLECTION



DUKE UNIVERSITY LIBRARY
DURHAM, N. C.

Date March 1, 1929

J. A. Thomas
Donor



Digitized by the Internet Archive
in 2017 with funding from
Duke University Libraries

THE COLLECTION OF A CONNOISSEUR

Mr. S. Yacoubka

BEAUTIFUL OLD CHINESE
PORCELAINS

THE PRIVATE COLLECTION OF
THE LATE
WILLIAM CHURCHILL OASTLER

TO BE SOLD BY DIRECTION OF EXECUTORS
AT UNRESTRICTED PUBLIC SALE
UNDER THE MANAGEMENT OF
THE AMERICAN ART ASSOCIATION
NEW YORK



ON FREE VIEW
AT THE AMERICAN ART GALLERIES
MADISON SQUARE SOUTH, NEW YORK
BEGINNING THURSDAY, JANUARY 28TH, 1915
AND CONTINUING UNTIL THE DATE OF SALE

BEAUTIFUL
OLD CHINESE PORCELAINS
AND OTHER ART PROPERTY
COLLECTED BY THE LATE
WILLIAM CHURCHILL OASTLER
OF NEW YORK

TO BE SOLD BY DIRECTION OF EXECUTORS
AT UNRESTRICTED PUBLIC SALE
ON FRIDAY AND SATURDAY AFTERNOONS
FEBRUARY 5TH AND 6TH, 1915
AT THE AMERICAN ART GALLERIES
MADISON SQUARE SOUTH
NEW YORK
BEGINNING AT 2.30 O'CLOCK

•
•

zip!

ILLUSTRATED CATALOGUE
OF THE
BEAUTIFUL OLD CHINESE
PORCELAINS
AND OTHER ART PROPERTY

COLLECTED BY THE CONNOISSEUR
THE LATE
WILLIAM CHURCHILL OASTLER
OF NEW YORK

AND TO BE SOLD BY DIRECTION OF
DR. FRANK R. OASTLER AND THOMAS F. KEATING, EXECUTORS

AT UNRESTRICTED PUBLIC SALE

ON THE DATES HEREIN STATED

138710

THE SALE WILL BE CONDUCTED BY
MR. THOMAS E. KIRBY
AND HIS ASSISTANT, MR. OTTO BERNET, OF THE
AMERICAN ART ASSOCIATION, MANAGERS
MADISON SQUARE SOUTH, NEW YORK

1915



THE AMERICAN ART ASSOCIATION
DESIGNS ITS CATALOGUES AND DIRECTS
ALL DETAILS OF ILLUSTRATION
TEXT AND TYPOGRAPHY

J. A. Thomas
Boston

709.51
K 58 2

WILLIAM CHURCHILL OASTLER

When William Churchill Oastler died last March at the ripe age of eighty-four, he had devoted many years to the collecting of Chinese porcelains. He was a native of Birmingham, England. After he came to this country he was associated, as an advisory engineer, with important railways. It is said to have been largely upon his advice that steel rails were first substituted here for the old cast iron variety.

FRIEND OF MR. ALTMAN

But his activities as an engineer did not interfere with his love of collecting Chinese porcelains. In the notable loan collection of these beautiful objects held some years ago by Messrs. Duveen Brothers, the Oastler cabinets were well represented, for Mr. Oastler was regarded as a connoisseur of refined taste and sound judgment. He was a close friend of the late Benjamin Altman, and the two often conferred together and submitted to each other's criticism many of their prospective purchases of Chinese porcelains.

The Oastler collection numbers some 300 items and includes beautiful blue and white in soft paste and hard paste porcelains; single color pieces, among which are rare peachbloom, *claire-de-lune*, *sang-de-bœuf*, yellow and celadon. There are also many important decorated pieces, including K'ang-hsi, *famille verte*; Yung Chêng, *famille rose*; and finely embellished Ch'ien-lung specimens. Of *blanc de Chine* there are some unusually fine examples. Two statues of Buddha, of carved and gilt wood, from an old Japanese temple are included.

The collection is well known. Besides, it is possible to recall several of the pieces in the Duveen exhibition. There they figured on an equal footing with loans from the cabinets of "Mr. J. P. M.," "Mr. P. A. B. W.," "Mr. M. J. P.," "Mr. E. J. B.," and others, besides pieces contributed by Messrs. Duveen Brothers themselves, and by this time long since passed into important American collections.

Many of the examples of white Chinese porcelains were loaned by "Mr. W. C. O." (Mr. Oastler). There were at least eight, including the white ovoid vase, with delicate engraved designs in cloud forms under the perfect glazing; the tall, white, graceful baluster vase, with unique raised decoration under the soft glazing, and showing trees, flowers and animals, the latter with short horns; and the pair of ovoid shaped rice grain vases with an unusually fine representation of the so-called laee pattern.

MORE OASTLER PORCELAINS

In *famille verte* the Oastler collection should contain notable examples. Mr. Oastler had among green pieces a tall globular bottle with a long, slender neck and decorated with translucent enamel colors of a lovely kind. Green arabesque foliage and red blossoms were conspicuous in the decoration of the body. The neck was encircled with a palm design and the shoulder carried a dragon. Typical colors of the *famille verte* palette also showed on a large oviform vase with trumpet shaped neck, the design a composition depicting an episode from a Chinese novel. In this episode the hero is pursued by rival leaders, when suddenly a great chasm opens before his enemies and stays their pursuit.

Vigorously rendered flowering peonies and other plants growing among rockwork, also a phoenix bird, or Imperial Feng-Huang, in brilliant plumage, were conspicuous features in the decoration of another large *famille verte* vase in the Oastler collection. So-called "gift objects" showed on a large square jardinière. Finally, there should be mentioned a tall vase of slender biberon shape, with a narrow neck. This is described as a dense kaolin porcelain, decorated in transparent enamels over the glaze, with the design underneath outlined in cobalt blue. There are various large conventional blossoms in the arabesque border motive. The shoulder shows phoenix birds amid decorative foliage. Such were some of the chief pieces belonging to Mr. Oastler when Messrs. Duveen Brothers held their exhibition, and doubtless all or most of them still will be found in the collection when it is placed on view in the American Art Galleries.—GUSTAVE KOBÉ, in the *New York Herald*, January 17, 1915.

CONDITIONS OF SALE

1. Any bid which is merely a nominal or fractional advance may be rejected by the auctioneer, if, in his judgment, such bid would be likely to affect the sale injuriously.

2. The highest bidder shall be the buyer, and if any dispute arise between two or more bidders, the auctioneer shall either decide the same or put up for re-sale the lot so in dispute.

3. Payment shall be made of all or such part of the purchase money as may be required, and the names and addresses of the purchasers shall be given immediately on the sale of every lot, in default of which the lot so purchased shall be immediately put up again and re-sold.

Payment of that part of the purchase money not made at the time of sale shall be made within ten days thereafter, in default of which the undersigned may either continue to hold the lots at the risk of the purchaser and take such action as may be necessary for the enforcement of the sale, or may at public or private sale, and without other than this notice, re-sell the lots for the benefit of such purchaser, and the deficiency (if any) arising from such re-sale shall be a charge against such purchaser.

4. Delivery of any purchase will be made only upon payment of the total amount due for all purchases at the sale.

Deliveries will be made on sales days between the hours of 9 A. M. and 1 P. M., and on other days—except holidays—between the hours of 9 A. M. and 5 P. M.

Delivery of any purchase will be made only at the American Art Galleries, or other place of sale, as the case may be, and only on presenting the bill of purchase.

Delivery may be made, at the discretion of the Association, of any purchase during the session of the sale at which it was sold.

5. Shipping, boxing or wrapping of purchases is a business in which the Association is in no wise engaged, and will not be performed by the Association for purchasers. The Association will, however, afford to purchasers every facility for employing at current and reasonable rates carriers and packers; doing so, however, without any assumption of responsibility on its part for the acts and charges of the parties engaged for such service.

6. Storage of any purchase shall be at the sole risk of the purchaser. Title passes upon the fall of the auctioneer's hammer, and thereafter, while the Association will exercise due caution in caring

for and delivering such purchase, it will not hold itself responsible if such purchase be lost, stolen, damaged or destroyed.

Storage charges will be made upon all purchases not removed within ten days from the date of the sale thereof.

7. **Guarantee** is not made either by the owner or the Association of the correctness of the description, genuineness or authenticity of any lot, and no sale will be set aside on account of any incorrectness, error of cataloguing, or any imperfection not noted. Every lot is on public exhibition one or more days prior to its sale, after which it is sold "as is" and without recourse.

The Association exercises great care to catalogue every lot correctly, and will give consideration to the opinion of any trustworthy expert to the effect that any lot has been incorrectly catalogued, and, in its judgment, may either sell the lot as catalogued or make mention of the opinion of such expert, who thereby would become responsible for such damage as might result were his opinion without proper foundation.

SPECIAL NOTICE.

Buying or bidding by the Association for responsible parties on orders transmitted to it by mail, telegraph or telephone, will be faithfully attended to without charge or commission. Any purchase so made will be subject to the above Conditions of Sale, which cannot in any manner be modified. The Association, however, in the event of making a purchase of a lot consisting of one or more books for a purchaser who has not, through himself or his agent, been present at the exhibition or sale, will permit such lot to be returned within ten days from the date of sale, and the purchase money will be returned, if the lot in any material manner differs from its catalogue description.

Orders for execution by the Association should be written and given with such plainness as to leave no room for misunderstanding. Not only should the lot number be given, but also the title, and bids should be stated to be so much *for the lot*, and when the lot consists of one or more volumes of books or objects of art, the bid per *volume* or *piece* should also be stated. If the one transmitting the order is unknown to the Association, a deposit should be sent or reference submitted. Shipping directions should also be given.

Priced copies of the catalogue of any sale, or any session thereof, will be furnished by the Association at a reasonable charge.

AMERICAN ART ASSOCIATION,

American Art Galleries,

Madison Square South,

New York City.

TSING DYNASTY

<i>Dynastic Title</i>	<i>Title of Reign</i>	<i>Date of Accession</i> <i>End of Reign</i>
SHIH TSU	SHUN CHIH	A.D. 1644—1661
SHÊNG TSU	K'ANG HSI	1662—1722
SHIH TSUNG	YUNG CH'ÊNG	1723—1755
KAO TSUNG	CH'ÏEN LUNG	1736—1795
JÊN TSUNG	CHIA CH'ING	1796—1821
HSÜAN TSUNG	TAO KUANG	1821—1851
WÊN TSUNG	HSIEN FÊNG	1851—1862
MU TSUNG	T'UNG CHIH	1862—1875
	KUANG Hsü	1875—1908
	SHIN TUNG	1909—1912

REPUBLICAN PERIOD

<i>President</i>	
YUAN-SHI-KAI	1912

THE AMERICAN ART ASSOCIATION
MANAGERS

SALE AT THE AMERICAN ART GALLERIES
THE OASTLER COLLECTION

On Friday and Saturday, February 5 and 6, 1915

To save time and to prevent mistakes each Purchaser will oblige the Managers by filling in this slip and handing it to the Record Clerk or Sales Attendant on making the first purchase.

Purchaser's Name _____

Address in Full _____

Amount of Deposit _____

FIRST AFTERNOON'S SALE

FRIDAY, FEBRUARY 5, 1915

AT THE AMERICAN ART GALLERIES

BEGINNING AT 2.30 O'CLOCK

Which includes Catalogue Nos. 1 to 218

BLUE AND WHITE PORCELAINS

1—CH'YEN-LUNG BLUE AND WHITE ROUGE BOX

Circular shape. Of soft paste type and coated with a brown crackle glaze, under which is a decoration of landscape views in two shades of blue. Has teakwood stand.

2—CH'YEN-LUNG BLUE AND WHITE ROUGE BOX

Flattened circular shape. Thin white hard paste with decoration under the glaze of two phoenixes, fire emblems, cloud forms and wave patterns. Bears a four-character mark of Hsüan-te. Has teakwood stand.

3—CH'YEN-LUNG SMALL BLUE AND WHITE BOWL

Storks and iris in reserve on a brilliant cobalt-blue ground.



No. 4



No. 5



No. 4

4—PAIR CH'YEN-LUNG BLUE AND WHITE COVERED BOWLS

Of the soft paste type. Brown crackle glaze and decoration of peaches, fruits and bats, the symbols of long life and happiness, in opaque underglaze blue. Have teakwood stands.

5—CH'YEN-LUNG BLUE AND WHITE BOWL

Clear white hard paste. A band of archaic scrolls, Greek fret and border of gadroons penciled in brilliant cobalt-blue.

Diameter, 4½ inches.

6—YUNG CHÊNG BLUE AND WHITE BOWL

Of thin sonorous hard paste and decorated with floral medallions, intercepted by leafy scrolls delicately penciled in light blue on a brilliant white ground. Six-character mark of the period. Has teakwood stand.

Diameter, 4½ inches.

7—K'ANG-HSI BLUE AND WHITE BOWL

Thin sonorous hard paste, with scalloped edge and a wide band of lotus petals modeled in relief and encircling the foot. These petals are each decorated in opaque blue and in reserve, with various blossoms and flowers; and above this band are four bold dragons pursuing the sacred pearl,

also in brilliant opaque blue. Inside on the bottom is a carp rising from the sea, and the inner border is composed of blossoms and wave patterns. Bears a six-character mark of the Hsüan-te period. Has carved teakwood stand.

Diameter, 7¾ inches.

8—YUNG CHÊNG LARGE BLUE AND WHITE BOWL

Thin hard paste of sonorous quality. Decorated with four floral medallions which are intercepted by foliated scrolls delicately penciled in a light shade of underglaze blue. Six-character mark of the period underneath the foot. Has teakwood stand.

Diameter, 8¾ inches.

9—K'ANG-HSI LARGE BLUE AND WHITE BOWL

Of clear white thin sonorous porcelain. The inner and outer surface profusely decorated with sprays of blossoms, flowers, and butterflies beautifully painted in two shades of brilliant underglaze blue. Six-character mark of the Ch'êng-hua period. Has teakwood stand.

Height, 3 inches; diameter, 8¾ inches.

10—K'ANG-HSI BLUE AND WHITE VASE

Bottle shape, with semi-globular body and tall tubular neck. Decorated with archaic dragons and cloud forms in mazarin blue of opaque quality on a brilliant white ground. Underneath the foot, penciled in blue, is a six-character mark of the period. Has teakwood stand.

Height, 7 inches.

11—CH'ÏEN-LUNG BLUE AND WHITE VASE

Quadrilateral shape, with receding foot and neck. Coated with a brilliant white glaze of orange peel surface, under which is a decoration of the flowers of the four seasons and birds-of-paradise finely penciled in fine quality of cobalt blue. Has teakwood stand.

Height, 8½ inches.

12—K'ANG-HSI BLUE AND WHITE VASE

Bottle-shaped, oviform body, with slender tubular neck. Paneled decoration of landscape, river view, flowers and symbols, painted in brilliant underglaze blue of opaque quality. Bears a six-character mark of the Ch'êng period. Has teakwood stand.

Height, 10 inches.

13—CH'IEN-LUNG BLUE AND WHITE JAR

Globular shape, with receding foot and wide mouth. It is of pure white hard paste and decorated in underglaze blue of brilliant opaque quality with branches of peaches, pomegranates and Buddha's-hand fruit, the Chinese symbols of the Three Abundances, "Years, Children and Happiness," and finished with bands and borders of Joo-e heads, palm leaves and gadroons. Underneath the foot a "praise" mark. Has teakwood stand.

Height, 7 inches; diameter, 8 inches.

14—CH'IEN-LUNG BLUE AND WHITE GINGER JAR

Globular shape. Hard paste porcelain beautifully decorated with numerous large lotus flowers, amid tendrils and a profusion of leafy scrolls, all finely painted in opaque blue on a brilliant white ground. The shoulder is encircled by bands of Joo-e heads and Greek fret, and round the foot is a border of gadroons. Has carved teakwood cover, with carved jade medallion inserted and carved teakwood stand.

Height, 9¼ inches; diameter, 8½ inches.

15—K'ANG-HSI BLUE AND WHITE BEAKER SHAPE VASE

With bulbous center and flange top, of clear white hard paste and decorated with numerous large aster flowers amid profuse leafy scrolls, finely penciled under the glaze in two shades of blue. Bears the six-character mark of Hsüan-te. Has teakwood stand.

Height, 17¼ inches.

16—K'ANG-HSI BLUE AND WHITE VASE

Tall oviform, with receding base and short tubular neck, spreading at mouth. In panels of various outlines are mythological monsters, carp rising from the sea, pine and plum blossoms, finely painted in two shades of fine cobalt blue of opaque quality on a brilliant white ground. In intervening spaces are ornaments, plants and twigs of fruits and blossoms. Bears a six-character mark of the Chia Ching period. Has teakwood stand.

Height, 18¼ inches.

17—CH'IEN-LUNG TALL BLUE AND WHITE VASE



Oviform body with a receding neck. It is of very thin porcelain of the soft paste type, and coated with a brilliant white glaze of crackled surface. The decoration, which is carefully painted in underglaze blue of fine quality, consists of a central ornamentation of twigs of peaches, pomegranates and Buddha's-hand fruit, the Chinese symbols of abundance of Years, Children and Happiness. Encircling the shoulder, neck and foot are bands of floral and leaf scrolls and Joo-e heads; palmettes and Greek fret. (Has been restored at lip.) Has teakwood stand.

Height, 16 inches.

18—CH'IEN-LUNG BLUE AND WHITE VASE

Tall oviform, with gracefully spreading short neck. It is of very thin porcelain of the "soft paste" type and is coated with an ivory-white glaze over an orange-peel surface. The decoration, which is beautifully painted in un-

derglaze blue of fine quality, consists of pine tree, plum in blossom and bamboo, the Chinese emblems of longevity. Has carved teakwood stand.

Height, 16¾ inches.

(Illustrated)

19—CH'ÏEN-LUNG BLUE AND WHITE VASE

Inverted pear-shape, with short neck and wide mouth. Of very thin hard paste, with an orange-peel surface over which is a white glaze of brilliant even quality. The decoration, which represents the leaves of a turnip, is beautifully painted in various shades in blue of very fine opaque quality. Encircling the mouth and foot are simple bands of key pattern in underglaze blue. Has teakwood stand.

Height, 13¾ inches.

(Illustrated)

20—CH'ÏEN-LUNG BLUE AND WHITE VASE

Oviform body with receding base and neck, of very thin porcelain of the soft paste type and coated with a creamy white glaze of orange-skin surface. The decoration, which is artistically executed in mazarine blue of brilliant opaque quality, consists of a fabulous monster and a pine tree and rocks. The flange has been repaired. Has teakwood stand.

Height, 15¾ inches.

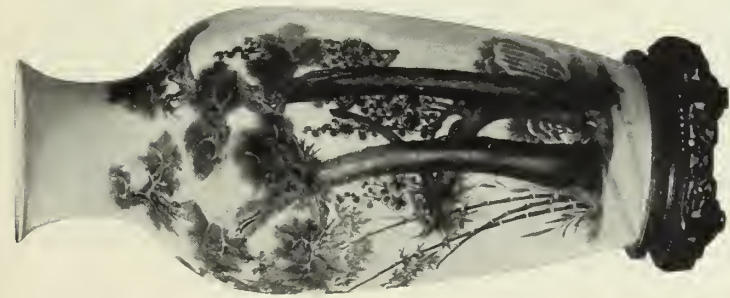
(Illustrated)

21—BEAUTIFUL K'ANG-HSI BLUE AND WHITE BEAKER

Inverted pear-shape body, with bold flaring neck. The embellishment, which is beautifully painted in underglaze blue of rare opaque quality on a brilliant white ground, consists of a rocky landscape, deer, storks and pine tree, all Chinese symbols of longevity. Has teakwood stand.

Height, 17¾ inches.

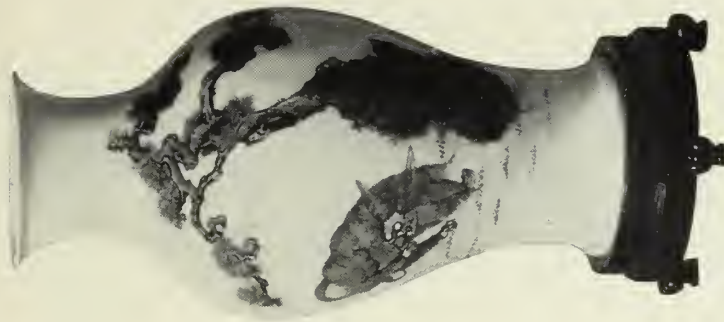
(Illustrated)



No. 18



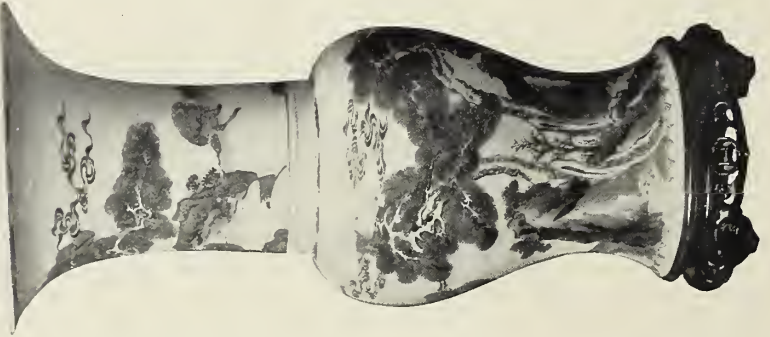
No. 19



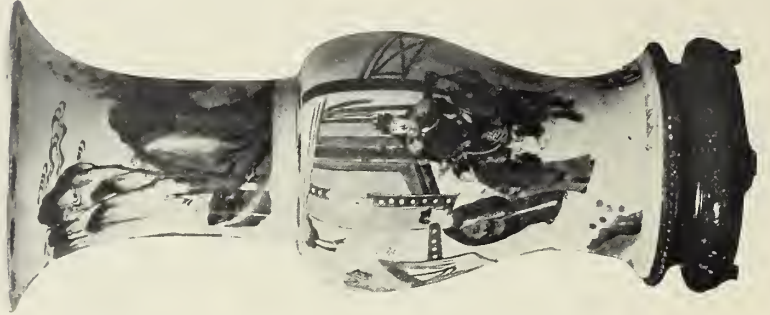
No. 20



No. 22



No. 21



No. 22

22—PAIR BEAUTIFUL K'ANG-HSI BLUE AND WHITE BEAKERS

With inverted pear-shape bodies and boldly flaring necks. They are of hard paste porcelain and coated with a glaze of exceeding purity. The embellishment on the bodies depicts Imperial ceremonial scenes in which are shown the Emperor, his retinue and other dignitaries artistically painted in mazarine blue of rare brilliant quality. A further embellishment on the necks of the vases is in the same brilliant quality of blue and depicts landscape views and Imperial personages in a garden. Have teakwood stands.

(Illustrated) *Height, 18 inches.*

23—CH'IEN-LUNG BLUE AND WHITE CYLINDRICAL VASE

With low foot, short neck and wide mouth, of hard paste porcelain enameled with a brilliant white glaze under which is a decoration in opaque blue of branches of peach fruit, pomegranates and Buddha's-hand fruit, the Chinese emblems of the Three Abundances: Years, Children and Happiness. The border design round foot, shoulder and neck are of scepter-head scrolls, flowers and symbols. Has teakwood stand.

Height, 14¼ inches; diameter, 8½ inches.



No. 23

24—K'ANG-HSI BLUE AND WHITE CLUB-SHAPED VASE

Finely painted decoration of a mountainous landscape, boating scene and figures executed in underglaze blue of opaque quality on a brilliant white ground. Has teakwood stand.

Height, 17¼ inches.

25—CH'EN-LUNG BLUE AND WHITE VASE

58-
Oviform body, with spreading neck. It is of thin white hard paste and is ornamented with two indented upright panels of serpentine outline of ivory-white surface without decoration. The intervening space is covered with a blue and white decoration to resemble fish roe over which is a *pâte sur pâte* decoration of butterflies, symbols and floral sprays. The neck has been restored and the mend concealed by a silver ornamental band. Has teakwood stand.

Height, 17 inches.

26—K'ANG-HSI BLUE AND WHITE CLUB-SHAPED VASE

71-
Clear white hard paste. Decorated with a rocky landscape, mandarin figures and river view in brilliant opaque blue. Has teakwood stand.

Height, 18½ inches.

27—TALL HAWTHORN JAR

65-
Oviform, with bell-shaped cover (also known as a Temple Jar). Fine white hard-textured porcelain of the seventeenth century, sustaining a brilliant dark cobalt-blue color under the glaze, imposed with special care for variations and mottling under a perfect glazing. The so-called hawthorn design shows the branches and twigs of the plum tree (Mei-hwa) alternately spreading downward from the neck and upward from the base, bearing numerous buds and blossoms with well-rounded outline against the vibrating background of pellucid blue, penciled over with crossings in a darker shade of blue to represent breaks or cracking ice, an indication of coming spring. The jar, with its original cover, is a representative type of rare quality. Period of K'ang-hsi.

Height, 17 inches.

Exhibited at a Loan Exhibition of Rare Chinese Porcelain held at the Galleries of Messrs. Duveen Brothers, New York, 1907.

- 28—K'ANG-HSI BLUE AND WHITE HAWTHORN TEMPLE JAR
With its original hat-shaped cover. The jar of inverted pear-shape, with spreading base and short neck of clear white hard paste and decorated with ascending and descending branches of the blooming prunus or hawthorn, executed in white reserve and spreading over the jar on a ground of pellucid blue, marked with darker lines to resemble cracking ice. Has teakwood stand. 270

Height, 17 inches; diameter, 10 inches.

- 29—K'ANG-HSI BLUE AND WHITE BEAKER
With bulbous center. It is of clear white hard paste, and profusely embellished with numerous conventionalized lotus flowers, amid a profuse decoration of foliated scrolls. The entire embellishment beautifully executed in underglaze blue of various tones and brilliant opaque quality. Has teakwood stand. 180

Height, 18 inches.

- 30—K'ANG-HSI BLUE AND WHITE VASE
Inverted pear-shape, with spreading base and short tubular neck, with broad mouth. It is of hard paste porcelain and is finely decorated with palmettes executed in reserve and in brilliant opaque blue. In intervening spaces are conventionalized lotus flowers and leaf scrolls, and encircling the shoulder base and foot are leaf scrolls and flowers also in brilliant underglaze blue. Underneath the foot, within a blue circle is, the symbol "Ling," the sacred fungus. Has teakwood stand. 110

Height, 17¼ inches.

- 31—K'ANG-HSI BLUE AND WHITE BEAKER
Of clear white hard paste and decorated in brilliant underglaze blue with pine trees, deer and storks, the Chinese symbols of longevity, and rocks and cloud scrolls. Has teakwood stand. 170

Height, 17½ inches.

32—CH' IEN-LUNG BLUE AND WHITE TEMPLE JAR

90-
Oviform, with spreading base and short wide neck. Elaborately decorated in underglaze blue in white reserve with large conventionalized flowers amid a profusion of leafy scrolls. The shoulder is encircled by a band of scepter-head scrolls, and the foot by gadroons. Has teakwood stand and openwork cover.

Height, 14 inches; diameter, 9 inches.

33—CH' IEN-LUNG BLUE AND WHITE VASE

12 ✓ -
Tall oviform, with gracefully spreading neck and wide mouth. The outer surface entirely covered with wave design etched in the paste underneath the glaze; two bold four-clawed dragons pursuing the pearl of omnipotence are painted in brilliant cobalt blue. Has teakwood stand.

Height, 19½ inches.

34—K'ANG-HSI BLUE AND WHITE HAWTHORN JAR

250
Tall oviform. Covered with a cobalt-blue glaze of varying depth of tone and marked with dark lines resembling the cracking of ice. The embellishment consists of descending and ascending branches of the blooming prunus executed in white reserve and spreading about the jar. Has teakwood stand and openwork cover.

Height, 14½ inches; diameter, 10 inches.

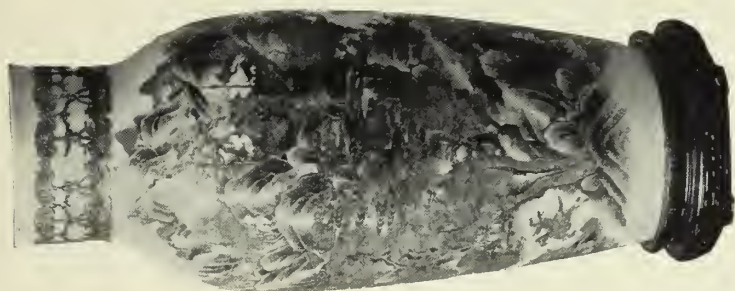
35—PAIR K'ANG-HSI BLUE AND WHITE CLUB-SHAPED VASES

250-
Decorated in brilliant cobalt blue with figures of the Three Star-gods of Happiness, Rank and Longevity and their juvenile attendants. On the reverse of each vase is a Chinese poem in Sanscrit character penciled in underglaze blue. The lip of one vase restored.

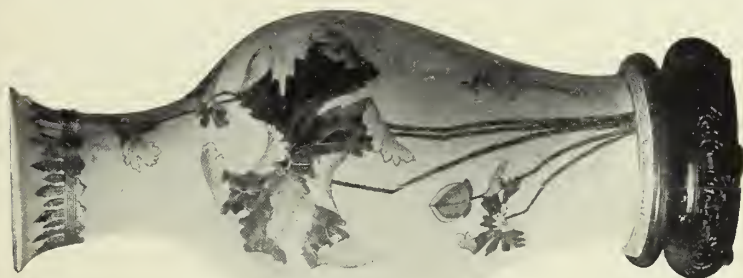
Height, 18½ inches.



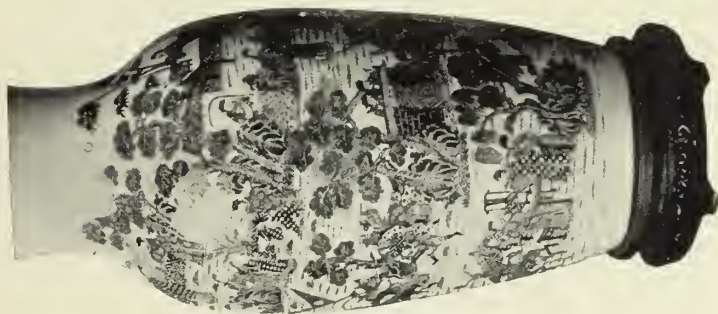
No. 34



No. 37



No. 38



No. 36

36—CH'YEN-LUNG BLUE AND WHITE VASE

280 - Tall oviform, with tubular neck and wide mouth. Thin porcelain of the soft paste type and coated with an ivory-white glaze. Elaborately decorated, in underglaze blue of brilliant quality, with Imperial garden scenes, musical party and equestrian figures. Has teakwood stand.

Height, 18¾ inches.

Exhibited at a Loan Exhibition of Rare Chinese Porcelain held at the Galleries of Messrs. Duveen Brothers, New York, 1907.

(Illustrated)

37—CH'YEN-LUNG BLUE AND WHITE VASE

120 - Tall oviform. Thin porcelain of the soft paste type. Coated with an ivory-white crackle glaze and elaborately decorated in underglaze blue of various tones, with a mountainous landscape, castles, equestrian and other figures and river view. The neck has been restored and bound with an ornamental band. Has teakwood stand.

Height, 19¾ inches.

Exhibited at a Loan Exhibition of Rare Chinese Porcelain held at the Galleries of Messrs. Duveen Brothers, New York, 1907.

(Illustrated)

38—CH'YEN-LUNG BLUE AND WHITE VASE

90 - Inverted pear-shape, with tall spreading neck. It is of thin porcelain of the soft paste type and is coated with an ivory-white glaze which is profusely marked with a brown crackle. The decoration, which is artistically drawn and painted in fine tones of underglaze blue, consists of a lotus plant and a crane. The lip has been restored and ornamented with a metal band. Has teakwood stand.

Height, 19½ inches.

(Illustrated)

39—CH' IEN-LUNG BLUE AND WHITE LARGE JAR

Graceful oviform, with short neck and wide mouth. Elaborately decorated in underglaze blue of varying tones, with numerous large lotus flowers amid a profusion of tendrils and leafy scrolls. Has teakwood stand and openwork cover with ivory ornament.

Height, 15¼ inches; diameter, 12½ inches.

40—PAIR IMPERIAL CH' IEN-LUNG BLUE AND WHITE JARS

Inverted pear-shape, with short neck and wide mouth. Of dense sonorous hard paste and elaborately embellished in lustrous opaque cobalt-blue with ten large lotus flowers and conventional leafy scrolls spreading over the body of the jars. The large blossoms are symmetrically arranged and fully expanded, so as to display in each flower the cup-shape fruit studded with the seeds in the midst of a whorl of petals. The foot is encircled with a wide band of palmettes and the short neck with a border of gadroons. Have teakwood stands and hat-shape covers.

Height, 19½ inches; diameter, 13½ inches.



41—PAIR K'ANG-HSI BLUE AND WHITE LARGE VASES

Tall beaker shape. Hard paste porcelain coated with a brilliant white glaze and profusely decorated in underglaze blue with various forms of the Shou "Longevity" in panels of brocade pattern. Have teakwood stands.

Height, 28 inches.

First Afternoon

42—BLUE AND WHITE PORCELAIN SCREEN

17½
Low form of four folds. Numerous porcelain tiles decorated in underglaze blue of figure and floral subjects and mounted in native wood.

Height, 31¼ inches; extends 27½ inches.

SPECIMENS OF WHITE PORCELAINS

43—CH'ÏEN-LUNG PURE WHITE LIBATION CUP

30—
Inverted helmet-shape, with snow-white glaze and decorated with branches and blossoms of magnolia modeled in relief in the paste.

Height, 3 inches.

44—CH'ÏEN-LUNG FUCHIEN LIBATION CUP

45—
Inverted helmet-shape. Coated with a soft ivory-white glaze and decorated with branches and blossoms of the wild plum and magnolia modeled in relief. The branch or trunk modeled in the round to form a foot.

Height, 2½ inches.

45—CH'ÏEN-LUNG FUCHIEN LIBATION CUP

20—
Lily-shaped. Enameled with a soft ivory-white glaze and bears the following inscription, which is incised in the paste: "Purity of mind and body is productive of long life."

Height, 2 inches.

46—CH'ÏEN-LUNG SMALL VASE

35—
Graceful hexagonal shape, with two scroll handles on neck. Of thin hard paste and coated with a pure white glaze.

Height, 5½ inches.

47—CH'ÏEN-LUNG SMALL BOTTLE-SHAPED VASE

27½
Of thin, hard paste and coated with a white glaze of brilliant quality. Has teakwood stand.

Height, 5 inches.

48—CH' IEN-LUNG SMALL WHITE JAR

Graceful oviform. Decoration of asters, foliations and scepter-head scrolls delicately etched in the paste, under a pellucid white glaze. Has teakwood stand.

Height, 4 inches.

49—YUNG CHÊNG SOFT PASTE KORO

Semi-globular shape on tripod and with two rudimentary scroll handles. Coated with a soft cream-white glaze which is boldly crackled. Has carved stand and cover.

Height, 3 inches; diameter, 4½ inches.

50—CH' IEN-LUNG OVIFORM VASE

Of white hard paste, with corrugated surface and soft white glaze. Border round mouth and foot glazed in imitation of iron and etched with Greek fret. Has carved stand.

Height, 6 inches.

51—CH' IEN-LUNG PURE WHITE VASE

Bottle-shaped. Invested with a white glaze of brilliant and even quality. Has carved stand.

Height, 6¼ inches.

52—CH' IEN-LUNG WHITE PORCELAIN JAR

Graceful oviform. Decoration of asters amid leafy scrolls, scepter-head border and gadroons, finely etched in the paste under a soft cream-white glaze. Has carved teakwood stand.

Height, 5½ inches.

Exhibited at a Loan Exhibition of Rare Chinese Porcelain held at the Galleries of Messrs. Duveen Brothers, New York, 1907.

53—CH' IEN-LUNG WHITE PORCELAIN VASE

Bottle-shaped. Decoration of peony flowers, leafy scrolls, and border designs, worked in relief in the paste under an opaque white glaze. Has carved stand.

Height, 7 inches.

First Afternoon

54—K'ANG-HSI PURE WHITE VASE *found at 4th Ave.*

105
Row
Graceful amphora-shape. Of thin hard paste and coated with a brilliant white glaze of very fine quality. Round the foot molded in relief is a band of chrysanthemum petals. As in the case of all peachbloom examples, the foot is hollowed out underneath, and the six-character mark is penciled in blue. Has teakwood stand.

Height, 8 inches.

55—YUNG CHÊNG PEAR-SHAPED WHITE VASE

60 — Of thin hard paste and coated with an evenly applied glaze of ivory-white tint. Has teakwood stand.

Height, 6¾ inches.

56—CH'ÏEN-LUNG FUCHIEN PIH-TONG

47½
Thick hard paste, coated with an ivory-white glaze, and fashioned in openwork of floral and foliated design. Has teakwood stand.

Height, 5½ inches.

57—CH'ÏEN-LUNG WHITE VASE

110 — Of graceful gallipot shape. It is of thin hard paste and decorated with lotus plants in bloom, storks, and a scepter-head border, beautifully worked in the paste and coated with a soft cream-white glaze. Has carved stand.

Height, 8 inches.

58—YUNG CHÊNG SOFT PASTE VASE

105 — Pear-shaped, of graceful outline. It is of soft paste of almost eggshell thinness and decorated under a cream-white glaze with dragons arising from the sea, in search of the pearl of omnipotence, delicately etched in the paste. (Repaired at neck.) Has carved stand.

Waven
Height, 7¾ inches.

59—K'ANG-HSI IVORY-WHITE VASE

Bottle shape, with bulbous mouth. The body decorated with conventional lotus and leafy scrolls, carved in the paste under a soft ivory-white glaze. Has carved stand.

Height, 9¼ inches.

60—K'ANG-HSI WHITE PORCELAIN VASE

Oviform bottle-shape, with tall slender tubular neck. Dense hard paste, coated with a brilliant white glaze and decorated with a band of lotus scrolls and borders of scepter heads and gadroons all carefully worked in relief in the paste. Underneath the foot, six-character mark of the period in cobalt-blue. Has teakwood stand.

Height, 9¾ inches.

61—CH'ÏEN-LUNG WHITE GALIPOT

Of graceful form. Profusely decorated with a broad band of peonies and leafy scrolls, and a border of palmettes and gadroons, carved in relief in the paste, under a pellucid white glaze of brilliant quality. Has carved stand.

Height, 8 inches.

62—CH'ÏEN-LUNG WHITE PORCELAIN VASE

Oviform bottle-shape, with short tubular neck. Thick hard paste, coated with a pure white glaze. The entire surface covered with a decoration consisting of large peonies and an elaborate foliation carefully worked in relief in the paste. Has teakwood stand.

Height, 9¾ inches.

63—YUNG CHÊNG WHITE PORCELAIN JAR

Graceful oviform, with short neck. Coated with a soft cream-white glaze, under which is a delicately etched decoration of asters, tendrils, and leafy scrolls. Has carved stand.

Height, 7¾ inches; diameter, 7 inches.

Exhibited at a Loan Exhibition of Rare Chinese Porcelain held at the Galleries of Messrs. Duveen Brothers, New York, 1907.

First Afternoon

64—K'ANG-HSI CLUB-SHAPED VASE

95— Clear white hard paste. Coated with a brilliant pellucid white glaze, under which is a decoration, artistically etched in the paste, of flowers and an elaborate leafy scroll. Underneath the foot a six-character mark of the Hsüan-te period. Has teakwood stand.

Height, 10½ inches.

65—CH' IEN-LUNG IVORY-WHITE VASE

60— Tall oviform, with spreading neck. Dense hard paste coated with a soft ivory-white crackle glaze, under which is a decoration of bamboo and chrysanthemums delicately etched in the paste. Has carved stand.

Height, 12½ inches.

66—CH' IEN-LUNG PURE WHITE JAR

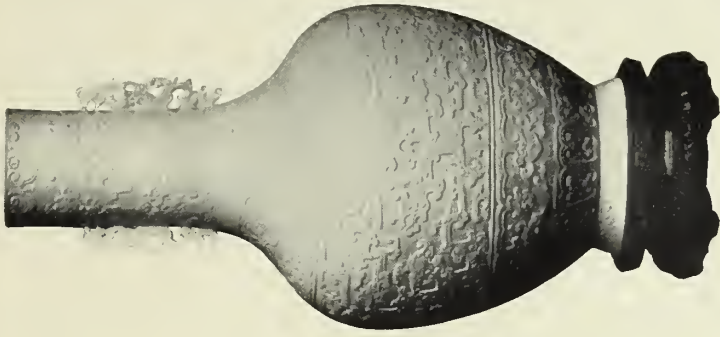
250— Globular shape, with wide mouth. Enameled with a pellucid white glaze, over a relief decoration beautifully worked in relief and etched in the paste. The body of the jar is covered with a floral design representing conventional peonies amidst leafy scrolls. The mouth is rimmed with a border of scepter-head scrolls and the foot encircled by a band of gadroons which are also modeled in relief. Has carved stand and openwork teakwood cover.

Height, 5 inches; diameter, 8 inches.

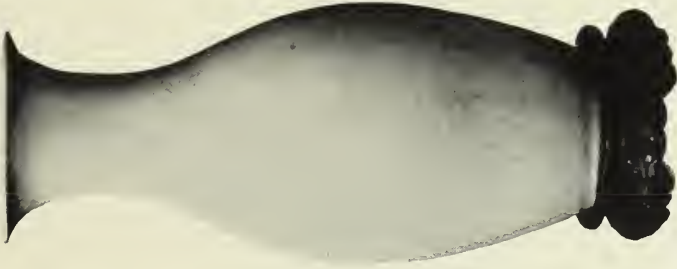
67—YUNG CHÊNG WHITE GOURD-SHAPED VASE

290— Of thin hard paste, and coated with a brilliant white glaze of pellucid quality. Profusely decorated with peonies, leafy scrolls and border designs beautifully etched in the paste under the glaze. Has teakwood stand.

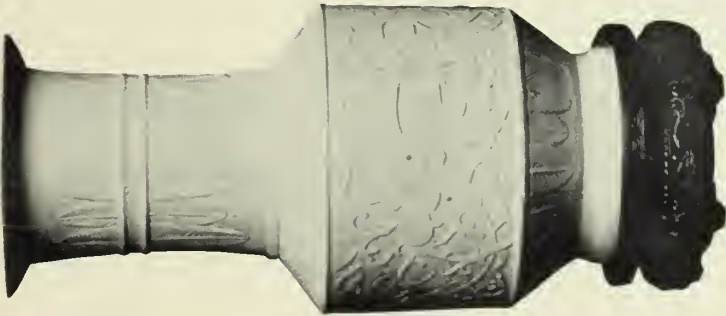
Height, 11½ inches.



No. 70



No. 68



No. 69

68—YUNG CHÊNG SOFT PASTE VASE

Tall oviform with spreading neck of graceful outline. It is of very thin porcelain and coated with a soft ivory-white glaze, which is cracked throughout. A decoration of chrysanthemums is delicately etched in the paste. Has teakwood stand.

Height, 12 inches.

(Illustrated)

69—CH'ÏEN-LUNG WHITE PORCELAIN VASE

68- Cylindrical body, with receding shoulder and base and tall tubular neck and wide flange. The body of the vase is covered with conventional peonies in the midst of leafy scrolls. Ornamental palmation encircles the neck and lower border of the body. The foot underneath is glazed with pale celadon. Has carved stand.

Height, 12½ inches.

(Illustrated)

70—CH'ÏEN-LUNG WHITE PORCELAIN VASE

300- Fashioned after an ancient Chinese bronze. Graceful bottle-shape, with two dragon handles on neck. Invested with a cream-white glaze of perfect purity and translucence. The entire outer surface is covered with an ornamentation of archaic dragon scrolls and bands of Jo-o and Greek fret, all of which are beautifully modeled in relief in the paste. (One handle repaired.) Has carved stand.

Height, 14 inches.

(Illustrated)

71—YUNG CHÊNG PURE WHITE JAR

320- Globular-shaped, of thin sonorous hard paste. Coated with a pellucid glaze of pure white, under which is a decoration delicately etched in the paste of dragons amid cloud forms and fire emblems pursuing the sacred pearl. Has carved stand.

Height, 7½ inches; diameter, 8½ inches.

Success

72—CH' IEN-LUNG PURE WHITE BOTTLE

Globular body, with tall tubular neck. Enameled with a brilliant white glaze under which is a decoration of two five-clawed dragons amid cloud forms and fire emblems. Has teakwood stand.

Height, 12¼ inches.

73—CH' IEN-LUNG WHITE PORCELAIN VASE

Bottle-shaped, with tall tubular neck. Round the body is a broad band of flowers amid leafy scrolls, modeled in relief in the paste. The shoulder is ornamented by a band of scepter-head scrolls, the neck with a broad band of palmettes, and the foot encircled with a band of gadroons, all of which are worked in relief in the paste. Has teakwood stand.

Height, 11 inches.

74—CH' IEN-LUNG FUCHIEN VASE

Bottle shape, with tall cylindrical neck boldly spreading at mouth. Of dense hard paste, coated with an ivory-white glaze. On the shoulder, modeled in relief, are three recumbent animals symbolic of the "Worship of the Three Animals." An etched decoration of bold dragons pursuing the sacred pearl covers the body and neck of vase. Has carved stand.

Height, 12¾ inches.

75—YUNG CHÊNG PURE WHITE VASE

Graceful pear-shape and of finished technique. It is of thin hard paste and coated with a pellucid brilliant white glaze, under which, beautifully modeled in relief in the paste, is a decoration of large lotus flowers amid a profuse foliage. Underneath the foot is an engraved seal mark of the period. Has teakwood stand.

Height, 13¾ inches.

76—CH' IEN-LUNG PURE WHITE VASE

240—Tall cylindrical shape, with receding neck. Of thin hard paste and coated with a pure white glaze of brilliant and pellucid quality. It is beautifully embellished with a decoration of conventional flowers amid a profuse foliation and bands and borders of palmettes, scepter-head scrolls and gadroons. The entire embellishment artistically modeled in the paste. (Repaired at lip.) Has teakwood stand.

Height, 13¼ inches.

Exhibited at the Loan Exhibition of Rare Oriental Porcelains held by Messrs. Duveen Bros., New York, January and February, 1907.

(Illustrated)

77—CH' IEN-LUNG THIN WHITE PORCELAIN VASE

95—Tall cylindrical shape, with receding shoulder and short neck. Of very thin hard paste and coated with a brilliant white glaze, under which is an elaborate decoration of floral designs and leafy foliations. Has teakwood stand.

(Illustrated)

Height, 14 inches.

78—CH' IEN-LUNG THIN WHITE PORCELAIN VASE

90—Cylindrical body, with trumpet-shaped neck. It is of very thin hard paste and is beautifully embellished with conventional flowers, tendrils and leafy scrolls, and a wide band of ornamental palmation and bordered with Jo-o heads, all skilfully modeled in relief in the paste and under a pellucid white glaze of exceeding purity. (Repaired at lip.) Has carved stand.

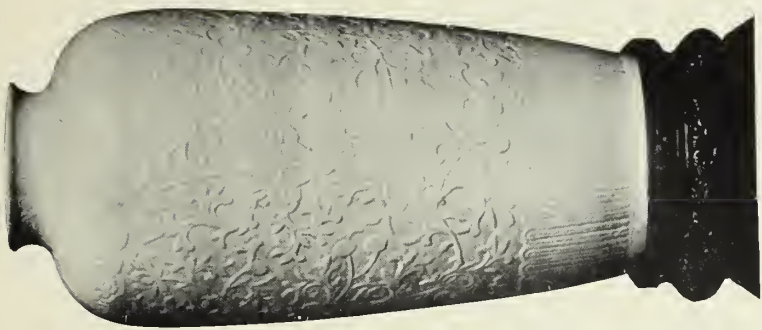
(Illustrated)

Height, 17½ inches.

79—CH' IEN-LUNG PURE WHITE BEAKER-SHAPED VASE

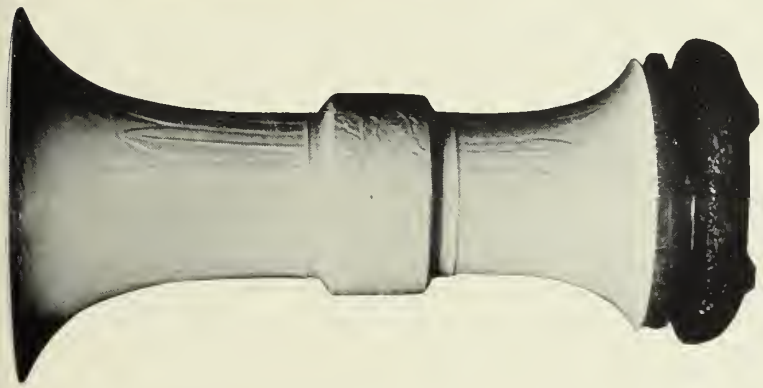
430—Of thin sonorous hard paste, and coated with a pure white pellucid glaze. A flat central band is ornamented with peonies and foliated scrolls and the base and neck with broad bands of ornamented palmation, all worked in relief in the paste. Has teakwood stand.

Height, 16 inches.



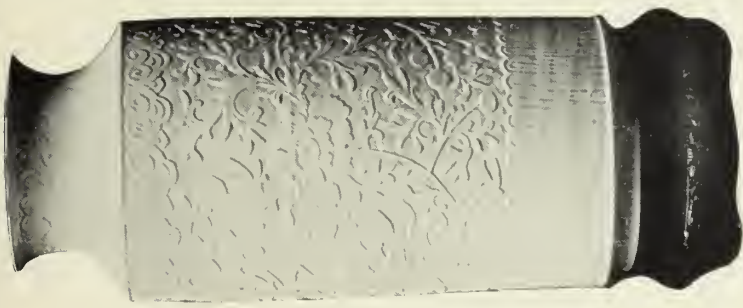
No. 78

77



No. 74

79



No. 77

76

First Afternoon

55-
80—CH' IEN-LUNG LARGE WHITE JAR

Oviform, with wide mouth and two elephant-head handles. It is of thin sonorous porcelain and coated with a pure white glaze of pellucid quality. Beautifully etched and modeled in relief is an elaborate decoration of flowers, foliations, Buddhistic symbols and ornamental palmation. Has carved stand.

Height, 14 $\frac{1}{4}$ inches.

70-
81—YUNG CHÊNG FUCHIEN VASE

Pear-shape, with two elephant-trunk handles on neck and tall foot. It is of dense hard paste and coated with a soft ivory-white glaze. Has carved stand.

Height, 18 inches.

280-
82—CH' IEN-LUNG WHITE PORCELAIN TEMPLE VASE

Noble bottle-shape. Of sonorous hard paste and coated with a pure glaze of brilliant quality. Elaborately ornamented with sprays of conventional lotus, peonies and other flowers amid leafy scrolls artistically carved in relief in the paste. Has carved stand.

Height, 23 inches; diameter, 13 $\frac{1}{2}$ inches.

214-
83—OLD SEIFU GOURD-SHAPED VASE

Made in two sections and mounted in ornamental silver. Coated with a soft ivory-white glaze and ornamented with archaic dragons, scrolls and Sanscrit characters in *pâte sur pâte* underneath the glaze. Has teakwood stand.

Height, 15 $\frac{3}{4}$ inches; diameter, 12 inches.

4
1210

SINGLE COLOR PORCELAINS

84—CH' IEN-LUNG TURQUOISE-BLUE VASE

Hexagonal bottle-shape, with scroll handles. Invested with a monochrome glaze of turquoise-blue applied over a fish-roe crackle. Has teakwood stand.

Height, $5\frac{3}{4}$ inches.

85—CH' IEN-LUNG VIOLET-COLOR VASE

Oviform, with gracefully spreading neck. Coated with a violet-color glaze of brilliant opaque quality. Has teakwood stand.

Height, $5\frac{1}{2}$ inches.

86—K'ANG-HSI CAFÉ-AU-LAIT COUPE

With rudimentary elephant-head handles. The inner and outer surface boldly crackled and invested with a *café-au-lait* glaze of lustrous quality. Rimmed with metal. Has teakwood stand.

Height, $3\frac{1}{4}$ inches.

87—CH' IEN-LUNG CELADON VASE

Bottle shape. The surface covered with a network of brown crackle and enameled with a pale-green celadon glaze. Has teakwood stand.

Height, 6 inches.

88—CH' IEN-LUNG CELADON VASE

Triple gourd-shape, enameled with a pellucid celadon glaze of pale sea-green tint. Has teakwood stand.

Height, 7 inches.

89—CH' IEN-LUNG STARCH-BLUE VASE

Oviform, with flaring base and neck. Coated with a starch-blue glaze, which is marked by irregular shaped lines in dark blue and relieved by a decoration in white outline of dragons pursuing the sacred pearl, fire emblems, cloud forms and the Fang-Shêng, the symbol of victory. (Cracked at lip.) Has carved teakwood stand.

Height, 8 inches.



No. 92



No. 90



No. 91

90—YUNG CHÊNG IRON-RUST JAR

Graceful oviform. Enameled with a dark brown monochrome glaze; thickly flecked with iridescent metallic spots. Has carved teakwood stand and openwork cover.

Height, $4\frac{3}{4}$ inches.

91—CH'ÏEN-LUNG CHERRY-RED VASE

Graceful bottle-shape, with tall tubular neck. Invested with a monochrome glaze of cherry-red color of varying tones. Underneath the foot penciled in blue, a seal mark of the period. Has teakwood stand.

Height, 7 inches.

92—CH'ÏEN-LUNG SANG-DE-POULET VASE

Globular bottle-shape, with tall tubular neck. Covered with a monochrome glaze of *sang-de-poulet* of even quality. Seal mark of the period penciled in underglaze-blue underneath the foot. Has teakwood stand.

Height, 7 inches.

93—K'ANG-HSI IMPERIAL YELLOW BOWL

Of thin porcelain, and invested with an Imperial yellow glaze of opaque and iridescent quality. Has six-character mark of the period. (Slight repair.) Has teakwood stand. 1/5

Height, 3½ inches; diameter, 7¼ inches.

94—CH'ÏEN-LUNG CELADON VASE

Oviform, with receding foot and wide mouth. Coated with a sea-green celadon glaze of pellucid quality applied over a decoration of fabulous animals and wave patterns, which is etched in the paste. Has teakwood stand. 40

Height, 8 inches.

95—YUNG CHÊNG CELADON VASE

Globular shape. Clear white hard paste porcelain. Enameled with a pellucid sea-green celadon glaze and ornamented round the body with a band and handles of rope pattern, modeled in relief in the paste. Seal mark of the period underneath the foot. Has silver collar and teakwood stand. 3V-

Height, 7 inches.

96—K'ANG-HSI POWDER-BLUE CLUB-SHAPED VASE

Coated with a powder-blue glaze of mazarine tint and varying in tone, over which is a decoration of birds, and plum in blossom penciled in gold. Has teakwood stand. 1/5

Height, 10¾ inches.

97—YUNG CHÊNG TEA-COLOR VASE

Graceful amphora-shape. Invested with a monochrome glaze of tea-color, which is of fine iridescent quality, and extends over the lip into the mouth, and is also applied underneath the foot, which bears a seal mark of the period, penciled in black. Has teakwood stand. A

Height, 10¾ inches.

98—K'ANG-HSI CLAIR-DE-LUNE COUPE



No. 98

Globular shape, with indented shoulder, low neck and narrow mouth. Of clear white hard paste and is invested with a monochrome glaze of *clair-de-lune* (moonlight white) of fine quality. Underneath the foot, six-character mark of the period. Has teakwood stand.

Height, 3 inches; diameter, 4 inches.

99—K'ANG-HSI PEACHBLOOM ROUGE BOX

Flat circular shape, with dome cover. Enameled with a peachbloom glaze of ashes of roses tint. Marked with the six characters of the period, delicately penciled in blue underneath the white glaze. Has teakwood stand.

Diameter, 2 $\frac{3}{4}$ inches.

100—K'ANG-HSI WRITER'S PEACHBLOOM WATER DISH

Low circular shape, with wide mouth. Invested with a peachbloom glaze of ashes of roses of brown tints. Underneath the foot six-character mark of the period, penciled in blue. Has silver-gilt openwork cover and tall teakwood stand.

(Illustrated) Diameter, 4 $\frac{3}{4}$ inches.

101—K'ANG-HSI WRITER'S PEACHBLOOM WATER DISH

Low circular shape, with broad mouth. Enameled with the typical peachbloom glaze and displaying beautiful tones of "coral-pink" and "crushed strawberry" tints. On the foot is penciled in rich cobalt-blue six-character mark of the K'ang-hsi period. Has tall teakwood stand and cover with white jade panel, carved in openwork.

(Illustrated) Diameter, 4 $\frac{3}{4}$ inches.



No. 101



No. 102



No. 100

102—K'ANG-HSI WRITER'S PEACHBLOOM WATER RECEPTACLE

60 - Semi-globular shape. Ornamented with three disks of dragon and cloud forms incised in the paste. Invested with a peachbloom glaze of ashes of roses tint and varying in tone. Six-character mark of the period penciled in under-glaze blue. (Slight repair at lip.) Has teakwood stand.

Height, 3½ inches; diameter, 5 inches.

(Illustrated)

103—CH'ÏEN-LUNG SANG-DE-BŒUF VASE

65 - Globular bottle-shape, with tall slender tubular neck. Invested with a mottled glaze of blood-red tone, which covers the entire outer surface and thickens at the foot. Bears a six-character mark of the Hsüan-té period. Has teakwood stand.

Height, 9 inches.



No. 103

104—YUNG CHÊNG ROSE-COLOR BOWL

720 - Of peony shape. Clear white sonorous porcelain. The outer surface enameled with a beautiful monochrome *soufflé* glaze of "rose-du-Barry" tint evenly applied so as to leave a defined white rim round the edge. Underneath the foot a six-character

mark of the period delicately penciled in cobalt-blue. Has teakwood stand.

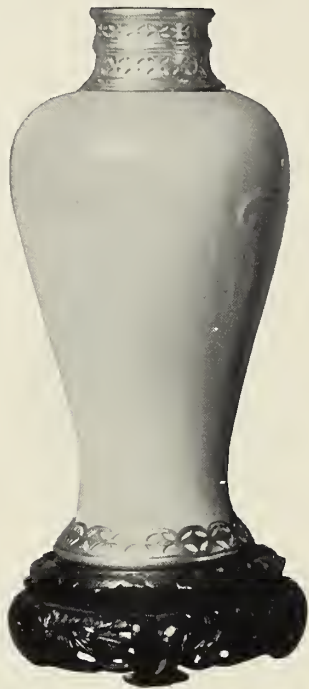
Height, 4 inches; diameter, 7½ inches.



105—K'ANG-HSI SUPERB PEACHBLOOM VASE

Graceful ovoid-shaped body, with tall trumpet-shaped neck, which has been restored at the lip and rimmed with gilded metal. Although this piece has had a lip added it remains a beautiful specimen of "peachbloom" as to texture and color. It is covered with a rich glaze of velvety aspect, displaying a characteristic play of color, so as to resemble as far as possible the velvety hues of the bloom of the ripening peach. Round the foot, molded in relief, is the conventional chrysanthemum pattern. The six-character mark underneath is written in underglaze cobalt-blue. Has silver gilt stand.

Height, 8¾ inches.



106—K'ANG-HSI SUPERB CLAIR-DE-LUNE VASE

180 -
Of galipot shape. Invested with a pellucid monochrome glaze, which is known as "moonlight white," or *clair-de-lune*, of exceedingly fine quality. This specimen was undoubtedly made by the same artist as the justly celebrated "peachbloom" examples, and as in the case of all peachbloom vases, the foot is hollowed out and the six-character mark penciled in underglaze blue. The neck has been replaced by silver and the foot rimmed with silver to correspond with the neck. Has carved stand.

Height, 8½ inches.

107—YUNG CHÊNG CLAIR-DE-LUNE VASE

Squat oviform, with wide mouth. Ornamented with an archaic dragon. Modeled in high relief and coated with a *clair-de-lune* glaze, which is profusely crackled. (Repaired.) Bears seal mark of the period. Has teakwood stand. 30

Height, 7 inches.

108—CH'ÏEN-LUNG CELADON JAR

Graceful oviform, with short neck and broad mouth. Covered with a celadon monochrome glaze, of pure sea-green tint, varying in tone, according to the depth, so as to bring out the decorative details underneath, which are carved in low relief in the paste. This decoration consists of a broad band of conventionalized lotus tendrils and foliations. A border of scepter-head scrolls round the shoulder and gadroons encircling the foot. Bears a seal mark of the period. Has teakwood stand. 60

Height, 9 inches; diameter, 7 inches.

109—YUNG CHÊNG CLAIR-DE-LUNE VASE

Graceful bottle-shape, with flange lip and border of gadroons modeled in relief round the foot. It is of clear white hard paste, and is invested with a pellucid monochrome glaze of *clair-de-lune* tint. Has teakwood stand. 40

Height, 11¼ inches.

110—CH'ÏEN-LUNG PEACOCK-BLUE VASE

Of pear-shape, with bold flaring lip. Enameled with a monochrome glaze of brilliant opaque peacock blue, underneath which is a surface completely covered with a "fish-roe" crackle. Has carved stand. 80

Height, 11¼ inches.



700-111—K'ANG-HSI LANG-YAO SANG-DE-BŒUF VASE

Of a form similar to the noted "Barlow" Vase. Coated with a monochrome glaze of varying tone of beautiful quality. The base is defined by an unglazed rim and the foot underneath is invested with a rice-color crackle glaze, which is a characteristic Lang-Yao specimen. (The lip has been restored.) Has carved stand.

Height, 11½ inches.

100-112—TAOU-KUANG IMPERIAL YELLOW JAR

Graceful oviform, with short neck. Enamelled with a monochrome glaze of Imperial yellow of brilliant opaque quality and iridescent luster. Underneath the foot an incised seal mark of the period. Has teakwood stand.

Height, 9¼ inches; diameter, 8 inches.

113—CH'YEN-LUNG TURQUOISE-BLUE VASE

Globular body with broad tubular neck. Embellished with decorations executed in relief and engraved in the paste. Invested with a finely crackled turquoise glaze, which varies in tone, thereby enhancing the effect of relief and chisel work. This ornamentation consists of a broad band of peony scrolls round the body, a ring of upright palmation on the neck and bands of ornamental scroll and leaf patterns encircling the foot. Has carved stand.

Height, 12¼ inches; diameter, 7¾ inches.

114—YUNG CHÊNG GRAY PEARL VASE

Graceful amphora-shape, ornamented with four archaic dragons which are modeled in bold relief, undercut, and enameled in various colors. The outer surface of vase is invested with a gray pearl glaze which is applied over a ground entirely covered with a brown crackle. Seal mark of the period penciled in cobalt-blue. (Lip restored.) Has teakwood stand.

Height, 14¾ inches.

115—CH'YEN-LUNG TURQUOISE-BLUE VASE

Oviform body, with broad flaring neck. Enameled with a turquoise-blue glaze varying in tone. Has carved stand.

Height, 11 inches.

116—CH'YEN-LUNG TEA-COLOR VASE

Inverted pear-shape, with low neck and broad mouth. Ornamented on the shoulder with two lion-head and ring handles which are modeled in high relief. Enameled with a monochrome glaze of tea-color. Underneath the foot an incised seal mark of the period.

Height, 12 inches.

First Afternoon

117—CH' IEN-LUNG CELADON VASE

Graceful pear-shape, with two monster-head and ring handles modeled in relief on shoulder and incised band of Greek fret encircling neck. It is of thick hard paste and is invested with a pellucid glaze of pale sea-green tint which extends over the lip into the vase and also covers the foot. Bears seal mark of the period. Has teakwood stand.

Height, 11½ inches.

118—CH' IEN-LUNG BEAUTIFUL CLAIR-DE-LUNE VASE

Graceful oviform and finished technique. Ornamented with two rudimentary scroll handles and horizontal ridges modeled in relief. The entire surface, including the inside of neck and foot, is enameled with a pellucid monochrome glaze of pale sky-blue tint known as "moonlight" white or *clair-de-lune*. Underneath the foot is a seal mark of the period penciled in blue. Has carved stand.

Height, 13 inches.

119—CH' IEN-LUNG CELADON VASE

Oviform body, with graceful spreading neck. It is decorated with large peonies amid leafy scrolls, dragons, and other fabulous monsters, worked in the paste underneath a pellucid sea-green glaze. Has carved stand.

Height, 12¾ inches

120—CH' IEN-LUNG STONE-BLUE VASE

Flattened oviform, with two handles of archaic design. The vase is fashioned after an ancient Chinese bronze, and invested with a monochrome glaze of stone-blue of fine quality and unusual color. Has teakwood stand.

Height, 13¼ inches.

121—CH' IEN-LUNG PEACOCK-GREEN VASE

Globular bottle-shape, with tall tubular neck. Enameled with a monochrome glaze of peacock-green tint applied over a ground covered with a fine crackle. Has carved stand.

Height, 14¼ inches.

122—CH' IEN-LUNG CELADON VASE

Tall amphora-shape, with spreading foot. Coated with a sea-green glaze, which thickens at the shoulder and foot, and has been applied over a network of brown crackle. (Slight repair at lip and foot.) Has carved stand.

Height 18 inches.

123—CH' IEN-LUNG CELADON VASE

Graceful oviform, with two mask-head and ring handles on shoulder. Fashioned after an ancient Chinese bronze. Invested with a pellucid sea-green glaze which is applied over a surface covered with bands of archaic and other fret patterns which are incised and modeled in relief in the paste. Has carved stand.

Height, 14½ inches; diameter, 9½ inches.

124—K'ANG-HSI CELADON VASE

Tall slender oviform, with spreading foot and neck. It is enameled with a pellucid sea-green glaze applied over an ornamentation of archaic dragons amid cloud forms which are modeled in relief in the paste. Bears six-character mark of Ch'êng-hua. Has carved stand.

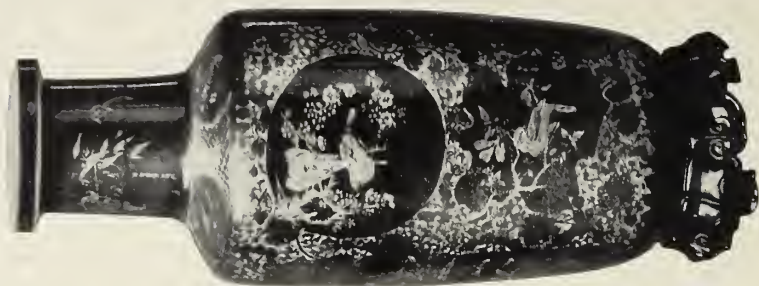
Height, 18½ inches.

125—K'ANG-HSI POWDER-BLUE BEAKER-SHAPED VASE

Coated with a mottled cobalt-blue glaze known as powder-blue, of brilliant quality and decorated over the glaze in penciled gold, with birds perched on branches of prunus blossoms. Has teakwood stand.

Height, 18 inches.

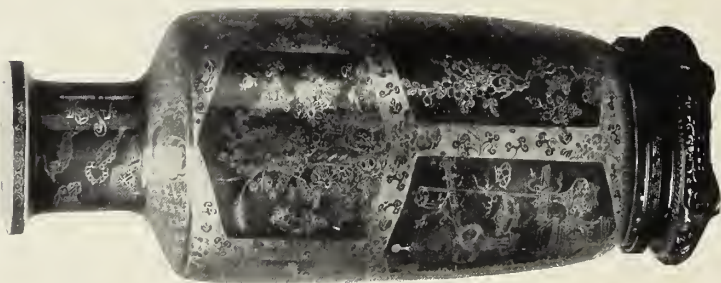
(Illustrated)



No. 126



No. 125



No. 127

126—K'ANG-HSI POWDER-BLUE CLUB-SHAPED VASE

Enamelled with a mottled cobalt-blue glaze of brilliant texture known as powder-blue. Two rims of the lip are of white, and left free of the glaze. It is decorated in pencil gold with a series of panels of different shapes surrounded by peony scrolls. Within oblong and circular foliated panels are birds perched on branches of blossoming trees, flower of the four seasons, butterflies and other designs. Has carved stand.

Height, 18¼ inches.

(Illustrated)

127—K'ANG-HSI POWDER-BLUE CLUB-SHAPED VASE

Decorated in pencil gold over a monochrome glaze of brilliant mazarine blue. Within eight lozenge-shaped panels which are outlined with wide borders of gold and reserve ornament are various ornaments known as the "Hundred antiques" and blossoming prunus. The shoulder is encircled by a band of arabesques and flowers and the neck with various vases and other ornaments. Has carved stand.

Height, 17 inches.

(Illustrated)

128—CH' IEN-LUNG CELADON VASE

Fashioned after an ancient Chinese bronze. It is of graceful oviform, with spreading base and neck and has two grotesque mask and ring handles on shoulder. It is coated with a pellucid glaze of pale celadon and is decorated with archaic dragons and other devices which are worked in low relief on a wide band with leaf-shaped points encircling the body on a ground covered with incised fret filled in with blue enamel. A wide border of Greek fret encircles the shoulder. Has carved stand.

First Afternoon

129—CH' IEN-LUNG CELADON VASE

Of graceful shape and finished technique. Invested with a pellucid monochrome glaze of pale sea-green tint and elaborately decorated with archaic designs fashioned after an ancient Chinese bronze, the ornamentation being worked in relief in the paste. Has carved stand.

Height, 15 inches.

130—CH' IEN-LUNG CELADON VASE

Pendant to the foregoing.

Height, 15 inches.

131—K'ANG-HSI STONE-BLUE GALIPOT

Decorated with bands of Greek fret and palmettes worked in relief and etched in the paste under a stone-blue glaze. (Repaired.) Has teakwood stand.

Height, 16½ inches.

132—YUNG CHÊNG LARGE GLOBULAR JAR

With wide mouth. Of dense sonorous porcelain and coated on the outer and inner surface with a monochrome glaze of olive-green color, varying in tone. Underneath the foot an incised seal mark of the period. Has teakwood stand and openwork cover.

Height, 18 inches; diameter, 14½ inches.

133—CH' IEN-LUNG CELADON VASE

Tall oviform. Enamelled with a pellucid monochrome glaze of pale sea-green tint and decorated with plum in blossom and bamboo branches carved in low relief in the paste. Bears a seal mark of the period. Has carved stand.

Height, 19½ inches.

134—CH' IEN-LUNG LARGE GROS-BLEU VASE

Noble bottle-shape. Of dense sonorous hard paste and invested with a monochrome glaze of brilliant *gros-bleu* of even quality and applied so as to leave a defined white rim round the mouth.

Height, 23½ inches; diameter, 15 inches.

DECORATED PORCELAINS

135—CH'ÏEN-LUNG ROUGE BOX

With dome-shaped cover. Of thin white hard paste and decorated with a bold five-clawed dragon, fire emblems, cloud scrolls and wave designs, etched in the paste and painted in underglaze blue and *rouge-de-cuivre*. Seal mark in cobalt-blue.

136—YUNG CHÊNG SMALL BOWL

Thin sonorous porcelain. The outer surface covered with a pellucid pale celadon glaze and decorated with fishes and *rouge-de-cuivre*. Six-character mark of the period penciled in underglaze blue.

Height, 2 inches; diameter, 4¾ inches.

137—YUNG CHÊNG COVERED BOWL

White hard paste of almost eggshell thinness. Decoration of plum in blossom and tree peonies, exquisitely executed in finely combined enamel colors. Six-character mark of the period in underglaze blue. Has carved tall stand.

Diameter, 4½ inches.

138—YUNG CHÊNG DECORATED BOWL

Thin white porcelain, decorated with five reserve panels of floral designs in enamel colors of the *famille rose*, the ground of basket pattern in crimson and gold.

Height, 2½ inches; diameter, 5¾ inches.

139—TAOU-KUANG DECORATED BOWL

Engraved rose-red ground, with flowers and leaves in enamel colors and four reserve panels of flowers, birds and ornaments. (Repaired.)

Height, 2½ inches; diameter, 5½ inches.

First Afternoon

140—CH'YEN-LUNG SMALL DECORATED FLOWER-POT

30 -
Octagonal-shape, on scepter-head feet. Invested with a cobalt-blue glaze and decorated with lotus flowers amidst leafy scrolls and symbolical bat penciled in gold.

Height, 2¾ inches; diameter, 6 inches.

141—CH'YEN-LUNG DECORATED PORCELAIN COVERED BOX

60 -
Oval-shape. Decorated in brilliant enamel colors with flowers-of-paradise leafy scrolls and bat symbols. Cover surmounted by a peach and twig modeled in relief. Underneath the foot a four-character hall mark penciled in red. Has carved teakwood stand.

Height, 3 inches; diameter, 6¼ inches.

142—CH'YEN-LUNG PAIR DECORATED DEEP PLATES

32 -
Center panel decorated with female figures and child (a domestic interior), painted in brilliant enamel colors enhanced by gilding. On the outer border Buddhistic figures and symbols, penciled in black, red, and gold.

Diameter, 8¾ inches.

143—YUNG CHÊNG DECORATED SMALL TEA-JAR

50 -
Oviform. Clear white hard paste, with poppies and other flowers, finely painted with enamel colors of the *famille rose*. Has carved teakwood openwork cover.

Height, 4½ inches.

144—YUNG CHÊNG BOTTLE-SHAPED VASE

70 -
Clear white hard paste. A floral branch and a single butterfly delicately painted in blue. Four-character mark underneath the foot. Has carved stand.

Height, 4¾ inches.

145—CH'YEN-LUNG PEAR-SHAPED VASE

With spreading foot and trumpet-shaped neck. Coated with a pellucid celadon glaze over which is a decoration in gilding and coral red of chrysanthemum flowers.

Height, 7¾ inches.

146—K'ANG-HSI OVIFORM VASE

Thick hard paste. Decoration of birds on tree branch, chrysanthemum flowers and Chinese poem, finely painted in enamel colors of *famille verte*. (Neck restored.)

Height, 7½ inches.

147—YUNG CHÊNG CORAL-RED VASE

Graceful pear-shape, with tall slender trumpet-shaped neck. Invested with a mottled coral-red glaze of fine quality and decorated with two fan-shaped reserve panels, in which are mountainous landscapes penciled in black.

Height, 8½ inches.

148—K'ANG-HSI BOTTLE-SHAPED VASE

Of graceful form, with bulbous mouth. The body is coated with a pellucid glaze of sea-green tint and the neck, decorated in underglaze blue with twigs of peach fruit and lotus flowers. The shoulder is encircled with a brown band of metallic luster. Has teakwood stand.

Height, 8½ inches.

149—CH'ÏEN-LUNG BOTTLE-SHAPED VASE

Inverted pear-shaped body, with tall slender tubular neck and broad base. It is of white hard paste of exceeding purity and is decorated with four lotus flowers amid leafy scrolls, borders and bands of lotus petals, gadroons, scepter-head scrolls and palmettes all beautifully painted in coral-red.

Height, 8¾ inches.

150—DECORATED BOTTLE-SHAPED VASE

Rose-color glaze, scepter-head panels, borders and other decoration painted in low tones of enamels.

Height, 10¼ inches.

151—PAIR K'ANG-HSI FIVE-COLOR VASES

Of clear white porcelain, fashioned in design of a double-lobed gourd. The decoration consists of a wide and narrow band, of large and small chrysanthemums in opaque coral-red, amidst foliage and cloud forms in green, purple and blue, on a shagreen background. Suspended from the lower band are tasseled *pendelogs*, intercepted by the swastika symbols. The foot is encircled by a border of gadroons in yellow, green and red.

Height, 9¼ inches.

152—K'ANG-HSI AMPHORA-SHAPED VASE

Of clear white hard paste. Invested with a monochrome glaze of pale celadon of pellucid quality and decorated with two bold five-clawed dragons and fire emblems etched in the paste and painted in "peachbloom" tint. The neck has been broken and replaced by one of silver. Underneath the foot a six-character mark penciled in cobalt-blue. Has carved stand.

Height, 9½ inches.



No. 152

153—CH'YEN-LUNG DECORATED VASE

Flattened oviform, with two tubular handles on neck. It is of clear white porcelain and is decorated in an artistic manner with flowers-of-paradise, profuse foliations, Buddhistic symbols and border designs, all executed in brilliant enamel colors and underglaze blue. Underneath the foot, penciled in cobalt-blue, is a seal mark of the period. Has carved teakwood stand.

Height, 10 inches.

154—K'ANG-HSI PEAR-SHAPED VASE

With receding foot and tall slender cylindrical neck. It is of clear white hard paste and decorated round the shoulder in coral-red with a four-clawed dragon amid fire emblems pursuing the sacred pearl. Has carved stand.

Height, 10½ inches.



No. 155



No. 157



No. 156

155—K'ANG-HSI SMALL CLUB-SHAPED VASE

Of clear white hard paste. The decoration, which is finely painted in the enamel colors of *famille verte*, depicts a mandarin lady in rich robe, three children at play and a garden bench on which is a dish of fruit, vase of flowers and utensils. The shoulder is encircled by a band of floral scrolls, edged with a border of gadroons, and on the neck are bamboo branches. Has carved stand.

Height, 10 inches.

156—K'ANG-HSI SMALL CLUB-SHAPED VASE

876 — Clear white hard paste porcelain. Beautifully decorated with a garden scene in which is a mandarin lady, table, benches, ornaments and utensils, all of which are artistically executed in the brilliant enamel colors of the K'ang-hsi *famille verte*. Round the shoulder is a band of floral and leaf scrolls and on the neck bamboo branches in black.

Height, 10 inches.

(Illustrated)

157—YUNG CHÊNG DECORATED GLOBULAR JAR

160 — With wide mouth. Clear white porcelain, finely decorated with a figure of a mandarin lady seated in a garden and children at play, painted in coral-red, aubergine, yellow and other enamel colors. Has carved tall stand.

Height, 8 inches.

(Illustrated)

158—CH'IEN-LUNG GALIPOT

30 — Fashioned in thin clear white hard paste and invested with a monochrome glaze of fine red color and decorated on the shoulder with branches of chrysanthemums, which are painted over the glaze in enamels of naturalistic tints. Has carved stand.

Height, 10¼ inches.

159—CH'IEN-LUNG DECORATED FISH-BOWL

Octagon shape. Decoration of two five-clawed dragons pursuing the sacred pearl, painted in red and gold, and cloud forms in various enamel colors. Borders encircling foot and rim of fret design; carved in the paste and glazed in imitation of cinnabar laequer. Has finely carved teak-wood stand.

Diameter, 9¼ inches.

160—CH' IEN-LUNG TRIPOD KORO

Globular shape, with two mask and rudimentary handles, resting on three scroll feet which terminate in monster masks. Fashioned after an ancient Chinese bronze. Dense porcelain. The outer and inner surface is glazed to resemble a patine of a bronze with gold inlays. Round the body of koro and the edge of cover are incised bands of fret pattern, coated with a malachite glaze. The cover is surmounted by a figure of a fabulous animal. Has carved stand of lotus design.

Height, 7½ inches; diameter, 7½ inches.

161—CH' IEN-LUNG JAR WITH ITS ORIGINAL COVER

Of graceful oviform. It is of clear hard paste and elaborately decorated in green of a brilliant hue on a ground of pure white. Round the body are two boldly drawn five-clawed dragons amid fire emblems and cloud forms, pursuing the sacred pearl. The shoulder is encircled with the eight Buddhistic symbols of happy augury, and the foot with a wide band of gadroons. The cover is decorated in harmony with the jar. Underneath the foot, penciled in cobalt-blue, is a seal mark of the Ch'ien-lung period. Has carved stand.

Height, 8¼ inches; diameter, 7 inches.

162—PAIR CH' IEN-LUNG OVIFORM JARS

Of sonorous hard paste. They are coated with a white glaze of exceeding purity, which enhances the brilliant green decoration of the jars. On each jar are two boldly drawn five-clawed dragons, shown amid cloud forms and fire emblems, in pursuit of the pearl of omnipotence. Round the shoulders are the eight Buddhistic symbols of happy augury, and the foot is encircled with a wide band of gadroons. They bear seal marks of the period penciled in cobalt underglaze blue. Have tall stands and openwork teakwood covers.

Height, 8¼ inches; diameter, 7 inches.

First Afternoon

163—TAOU-KUANG OCTAGONAL FISH-BOWL

47- Low form. Invested with a green glaze, and the outer surface decorated with lotus flowers, leaf scrolls, Buddhistic symbols and other designs in brilliant enamel colors, outlined with gilding. Has finely carved teakwood stand.

Diameter, 9¾ inches.

164—YUNG CHÊNG IMPERIAL CHINESE BOWL

70- Polyhedron shape. Of thin sonorous porcelain and is invested on the inner and outer surface with a starch-blue glaze of a fine and even quality. On each of the many sides of the bowl is a bunch of grapes, painted in aubergine and other enamels. The bowl is fitted with an inside cushion of Chinese silk to avoid an accumulation of dirt and has a high teakwood stand.

Height, 4½ inches; diameter, 10 inches.

165—CH'ÏEN-LUNG PEAR-SHAPED VASE

70- With gracefully spreading neck. Richly decorated with flowers-of-paradise, tendrils and leafy scrolls. Round the neck, symbolic bat and the emblematic sounding stone, all painted in brilliant enamel colors. (Repaired at lip.) Has carved stand.

Height, 10½ inches.

166—YUNG CHÊNG DECORATED CYLINDRICAL VASE

70- With receding mouth and foot. Decoration of figures of Chinese ladies, a child, various ornaments, fruits and flowers, exquisitely painted in the manner of the decoration of the finest eggshell plates.

Height, 10½ inches.

167—CH'ÏEN-LUNG GRACEFULLY-SHAPED DECORATED VASE

37- Flattened oviform and of finished technique. The decoration, which consists of large passion flowers, foliations and the Pa che siang—the eight lucky emblems of the Buddhists

—is artistically executed in brilliant enamel colors on a pure white ground. The foot is encircled by a wide band of gadroons and the mouth by scepter-head scrolls. On the neck are two tubular handles. Underneath the foot is a seal mark of the period. Has carved teakwood stand.

Height, 12¾ inches.

168—TAOU-KUANG DECORATED BOTTLE-SHAPED VASE

Globular body, with tall cylindrical neck, which is encircled at the mouth by a drooping flange of scepter-head design. Decorated in various enamel colors and gilding, with flowers and Buddhistic symbols amid a profuse foliation. Various bands and borders are painted in harmonious colors. Seal mark of the period penciled in red.

Height, 12¾ inches.

169—CH' IEN-LUNG GOURD-SHAPED VASE

Double-lobe shape, of clear white porcelain. Enamelled with a robin's-egg blue glaze of even quality, and decorated in brilliant enamel colors and gilding with large conventionalized lotus flowers, foliations, and small floral sprays, interspersed with *Shou* characters and various emblems, and further embellished with a series of borders of gadroons, scepter-head scrolls and Greek fret.

Height, 11¾ inches.

170—PAIR CH' IEN-LUNG DECORATED ROSE-COLOR VASES

Globular bottle-shape, with bulbous necks. Invested with a pale rose-color glaze, over which is a decoration, finely painted in various enamel colors and gilding, of lotus flowers amidst leafy scrolls, "The eight lucky emblems of the Buddhists," and other designs. The neck is encircled with a band of inverted petals modeled in slight relief and glazed with yellow, blue and rose-red. Have finely carved teakwood stands.

Height, 10¾ inches.

171—CH' IEN-LUNG DECORATED OVIFORM JAR

31 - Covered with an orange-yellow glaze of opaque quality and decorated with plum in blossom, bamboo, and chrysanthemums incised in the paste and enameled in brilliant green, sapphire, blue, red and white. Around the shoulder is a band of scepter-head scrolls and around the foot a band of gadroons, also incised and enameled to correspond with the predominating decoration. Has finely carved tall teakwood stand.

Height, 12½ inches.

172—K'ANG-HSI BUTTERFLY GINGER JAR

160 - Globular shape. The decoration consists of thirty-eight butterflies, finely painted in the enamel colors of the K'ang-hsi *famille verte*. Shoulder encircled by a band of fret design of black and green intercepted by four reserves of fabulous animals and edged with scepter-head scrolls. Around the foot a band of gadroons in five colors. Has teakwood stand and carved cover with openwork white jade panel.

Height, 8½ inches; diameter, 7½ inches.

173—CH' IEN-LUNG LARGE GALIPOT

30 - Of graceful outline. It is of clear white hard paste, coated with a pale celadon glaze and decorated in peachbloom tints with a dragon and bold cloud forms. Underneath the foot penciled in cobalt-blue is a six-character mark of the K'ang-hsi period. Has carved stand.

Height, 12½ inches.

174—CHIA CH'ING OPENWORK DECORATED LANTERN

64 - Of very thin porcelain and of hexagonal form, with panels carved in openwork design. Decorated in the enamel colors of the Ch'ien-lung period. The six sides have oblong panels

pierced with trellis-work, of two different patterns, round small solid medallions, which are painted with miniature garden scenes, and pictures of ladies engaged in the "Four elegant accomplishments": Music, chess, painting and writing. The upper and lower receding rims are pierced with six smaller panels. The borders and edges are richly decorated with roses and other floral brocades, painted upon diapered ground of diverse pattern.

Height, 13¼ inches.

175—CH' IEN-LUNG DECORATED TRUMPET-SHAPED VASE

Of clear white hard paste. Lanterns, flowers, foliations and Buddhist symbols finely painted in the five enamel colors and enhanced by gilding.

Height, 13¼ inches.

37-1/2

176—CH' IEN-LUNG TALL DECORATED VASE

Of tall graceful oviform shape with receding base and tall slender neck, on which are two red and gold dragon handles in openwork. It is of white hard paste of exceeding purity and is embellished with various flowers, foliations, archaic dragon scrolls and interesting border designs artistically executed in finely combined enamel colors and underglaze blue and gilding. Underneath the foot, penciled in cobalt-blue, is a seal mark of the period. Has carved teakwood stand.

Height, 15½ inches.

38

177—CH' IEN-LUNG ORANGE YELLOW BOTTLE

Globular shape, with tall tubular neck. The glaze, which is of translucent quality, is evenly distributed and is relieved by a decoration in dark brown of two fabulous animals and cloud forms.

Height, 12½ inches.

42-

178—PAIR YUNG CHÊNG VASES

Oviform, with low spreading feet and short necks flaring at mouth. Of clear white hard paste porcelain. Both vases are beautifully decorated in the brilliant enamel colors peculiar to specimens of the best Yung Chêng period. On one vase are figures of the "Three Star-gods of Happiness, Rank, and Longevity," and their youth attendants, and on the companion piece a royal female personage seated at a table in a garden and two children at play. On the neck of each vase are dishes of fruit, vases of flowers and various symbols, painted in colors to harmonize with the predominating embellishment.

Height, 14½ inches.

179—YUNG CHÊNG CYLINDRICAL VASE

With spreading neck and foot. Of clear white hard paste decorated with a scene showing two Chinese ladies seated in a garden playing the game of "Go." On the neck are emblems of the new year. The entire embellishment is finely painted in the enamel colors characteristic of the Yung Chêng period.

Height, 15½ inches.

(Illustrated)

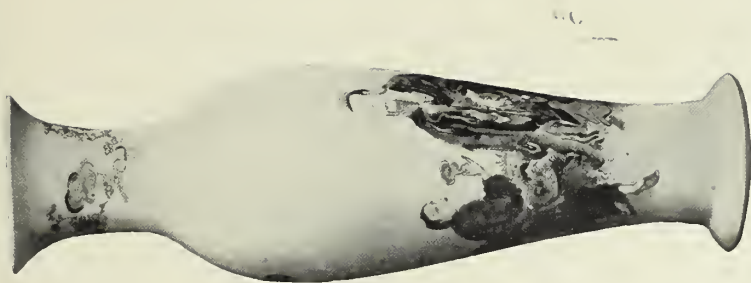
180—YUNG CHÊNG VASE

Graceful tall oviform, with spreading foot and trumpet-shaped neck. It is of thin sonorous hard paste and beautifully embellished in the finely blended enameled colors characteristic of the period in which the vase was made. The decoration depicts an Imperial personage and youth in a garden, the latter with a basket of fruit and offering the Emperor the sacred fungi, a symbol of long life. These figures, a pine tree, rocks and sprays of blossoms are all artistically executed on a brilliant white ground. Has carved stand.

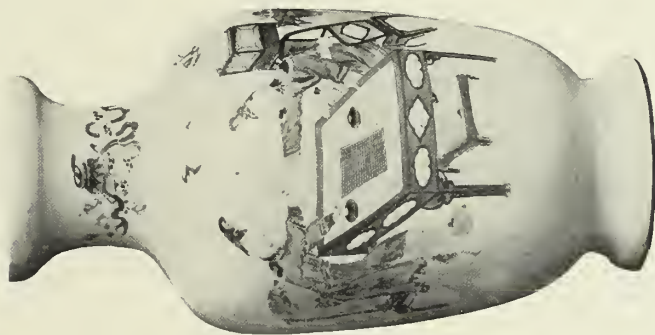
From the Charles A. Dana Collection.

Height, 17¾ inches.

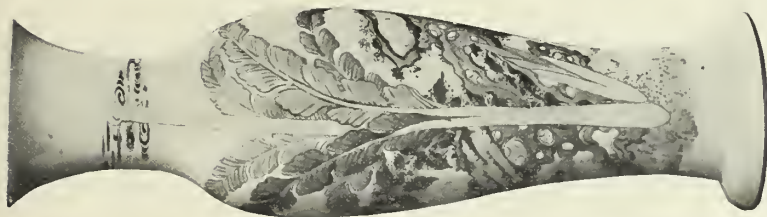
(Illustrated)



No. 180



No. 179



No. 181

First Afternoon

181—YUNG CHÊNG VASE

215 - Of similar shape to the preceding vase. It also is of thin sonorous hard paste, and embellished in the same artistic manner. The decoration depicts two richly-robed female figures, probably an Empress and her attendant, in a garden, the former holding in her left hand a scepter, and the latter offering to the former a large peach, the Chinese emblem of immortality. A further decoration of a palm tree, rocks, flowers and cloud scrolls are as beautifully painted in the same combination of brilliant enamel colors as is the figures. (Has been repaired at lip). Has carved stand.

Height, 18 inches.

(Illustrated)

182—CH'ÏEN-LUNG LARGE GALIPOT

60 - Of clear white thin porcelain. The decoration, which is finely executed in varying tones of peachbloom consists of large peonies and leafy scrolls and panels of *pendelognes* of emblems. Has carved stand.

Height, 14½ inches.

183—CH'ÏEN-LUNG LARGE VASE

311 - Oviform bottle-shape, with tall slender neck. Decorated with a bold five-clawed dragon and fire emblems in peach-bloom tint and cloud forms in brilliant mazarine blue. Has carved stand.

Height, 15¾ inches.

184—CH'ÏEN-LUNG UNUSUAL DECORATED VASE

115 - Intricately fashioned in the form of a double-lobed gourd—the lobes made so as to revolve round a solid cylinder. The two lobes are ornamented with eight monster heads modeled in high relief and holding loose rings. Between these heads are eight panels of pierced work of swastika fret and trellis pattern which are glazed in brown and gilt decorated. The borders and edges are embellished with flowers and folia-

tions in enamel colors painted upon an Imperial yellow ground. The neck is capped with a cover to correspond with the lobes, and separating the latter and encircling the foot are rings of floral and leaf scroll designs penciled in blue, over the glaze. Underneath the foot there is a seal mark in underglaze blue. Has carved teakwood stand.

Height, 16 inches.

Exhibited at a Loan Exhibition of Rare Chinese Porcelain held at the Galleries of Messrs. Duveen Brothers, New York, 1907.

185—CH'ÏEN-LUNG TALL CYLINDRICAL EWER

With tiara-pointed top and divided transversely by molded bands into three sections, the middle one bearing a spout. Used for seed fruit syrups. It has two mask handles with loose rings and is profusely decorated in finely combined enamel colors, with conventionalized lotus, chrysanthemums and gold foliations.

Height, 18 inches.

186—CH'ÏEN-LUNG TALL CYLINDRICAL EWER

Companion to the preceding.

Height, 18 inches.

187—YUNG CHÊNG TALL PEAR-SHAPED VASE

With spreading base and trumpet-shaped neck. Of clear white sonorous hard paste, and embellished with figures of two sages, under a pine tree, rocks and blossoms, beautifully painted in the enamel colors characteristic of the Yung Chêng period. Has finely carved stand.

Height, 17¼ inches.

188—CH'ÏEN-LUNG BEAKER-SHAPED VASE

Of dense hard paste, profusely decorated in brilliant enamel colors with five-clawed dragons pursuing the sacred pearl, fire emblems, cloud forms and the symbolical bat.

Height, 15¼ inches.

189—YUNG CHÊNG VASE

105- Tall oviform, with rounded shoulder and trumpet and cylindrical neck, gracefully flaring at the mouth. The entire decoration is painted in brilliant enamel colors. On the body is a formal arrangement of quatrefoil-shaped panels outlined with black and imposed on red ground of fish-roe diaper. Within the panels are flowers, stork, crests, the *Shou* character, and scrolls, painted in various colors on backgrounds of mazarine blue, Imperial yellow, rose-pink and pale celadon. The foot and shoulder embellishments harmonize and on the neck painted on a cobalt-blue ground are two archaic dragons amid lotus flowers and leafy scrolls. Has carved stand.

Height, 16½ inches.

Exhibited at a Loan Exhibition of Rare Chinese Porcelain held at the Galleries of Messrs. Duveen Brothers, New York, 1907.

190—K'ANG-HSI FAMILLE VERTE VASE

1600-
Javelle
New? Graceful globular bottle-shape, with tall slender tubular neck. The elaborate decoration, which is finely executed in the enamel colors of the K'ang-hsi *famille verte*, consists of an embellishment which entirely covers the globular body, including eight asters alternately painted in coral-red and gold, yellow and black, aubergine and yellow, and coral-red, amid tendrils and leaves in vivid green, and profuse leafy scrolls in white reserve on a pale green ground speckled with black. The shoulder is encircled with a band of flowers, dragons and scrolls and borders of green fret and scepter-heads, and the neck by a band of upright palmettes. Has carved tall stand.

Height, 16½ inches.

Exhibited at a Loan Exhibition of Rare Chinese Porcelain held at the Galleries of Messrs. Duveen Brothers, New York, 1907.

(Illustrated)



No. 192



No. 190



No. 191

191—K'ANG-HSI FAMILLE VERTE BEAKER

81 -
Inverted pear-shaped body, with trumpet-shaped neck. On a clear white ground is a finely painted decoration of dragons and phoenixes, the emblems of the Emperor and Empress, amid cloud forms and fire emblems in pursuit of the pearl of omnipotence. The entire embellishment is executed in the brilliant enamel colors of the *famille verte*. Has carved stand.

(Illustrated)

Height, 18 inches.

192—K'ANG-HSI BEAKER-SHAPED VASE

318 -
Of inverted-pear form, with boldly flaring neck. It is of clear white hard paste and finely decorated in the brilliant enamel colors of the *famille verte*. Round the upper part of the body is a wide band formed of four large Joo-e heads outlined with black and embellished with conventionalized flowers and leaves on bright green ground covered with black scrolls. On the lower portion are floral sprays, and encircling the shoulder, neck and foot are bands and borders, dragons, palmettes, scepter-heads and gadroons in colors to harmonize with the predominating decoration. Has carved stand.

(Illustrated)

Height, 18½ inches.

193—K'ANG-HSI BEAKER-SHAPED VASE

105 -
Of clear white hard paste. The decoration is modeled in slight relief, also etched in the paste, and painted in brilliant underglaze blue, copper red and opaque celadon. On the bulbous body are two dragons and the sacred fungus; on the base, tree peonies, chrysanthemums, butterfly and rocks; and on the neck, hawthorn blossom, pine, bamboo, and rockeries. Underneath the foot is the six-character mark of the period penciled in cobalt-blue. Has carved stand.

Height, 17¾ inches.

Exhibited at a Loan Exhibition of Rare Chinese Porcelain held at the Galleries of Messrs. Duveen Brothers, New York, 1907.

194—BEAKER-SHAPED VASE

Coral-red glaze, with asters, tendrils, and leafy scrolls in with reserve. In six reserve panels are various ornaments, flowers and birds painted in the five-color enamels. The border designs of scepter-head scrolls, diaper and gadroons are similarly treated. Has carved stand.

Height, 17 $\frac{3}{4}$ inches.

31

195—YUNG CHÊNG VASE WITH ITS ORIGINAL COVER

Tall oviform, with gracefully spreading base and short cylindrical neck. Of thin hard paste. Elaborately decorated with magnolia in bloom, tree peonies, pheasants, and rockeries, painted in brilliant underglaze blue and coral-red enriched by gilding.

Height, 19 inches.

41

196—K'ANG-HSI FAMILLE VERTE CLUB-SHAPED VASE

Of clear white sonorous porcelain. Beautifully painted in the brilliant enamel colors characteristic of the best productions of the K'ang-hsi period. The body is decorated with a scene depicting an interior with the Emperor seated and giving an audience to a visiting dignitary. In a garden adjoining are other dignitaries and two warriors, presumably the retinue of the visiting royal personage, and the latter's horse. An imposing weeping willow, shrubs, and rockeries complete the embellishment of the body of the vase. On the shoulder are reserves of chrysanthemums surrounded by arabesques and diaper, on the neck are figures of Chinese children at play, and encircling the foot is a band of gadroons. Has carved stand.

Height, 17 $\frac{3}{4}$ inches.

(*Illustrated*)

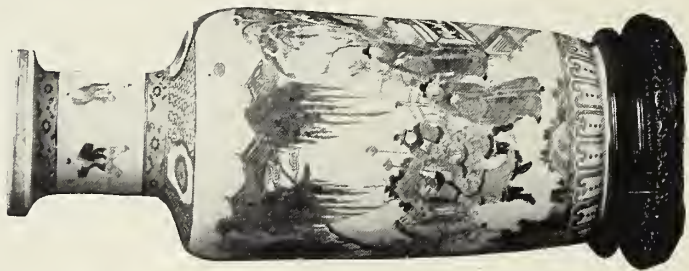
97



No. 197



No. 198



No. 196

197—K'ANG-HSI CLUB-SHAPED VASE

Clear white hard paste. Decorated in the brilliant enamel colors of the best period in the reign of K'ang-hsi. The decoration is arranged in nine large oblong reserve panels and two smaller square panels, displayed upon a green ground speckled with black and covered with ornaments, dragons, blossoms and butterflies. The panels contain figures of fabulous monsters, landscape views with birds and blossoming trees, deer, rabbits and other designs. Has carved stand.

Height, $18\frac{3}{4}$ inches.

(Illustrated)

198—K'ANG-HSI TALL VASE

Graceful rectangular and tapering form, with slightly curved shoulder and tubular neck. Fine white Ts'ing porcelain. Decorated *sur biscuit* in brilliant *famille verte* enamel colors of the seventeenth century. The four vertical sides present varying panel forms, separately decorated and posed upon a striking green brocaded ground that is invested with red peony and magnolia flowers, arabesque and foliage; including blue and yellow butterflies which are dispersed over the field of stippled green. The subjects depicted on the series of reserved medallions include besides the carps, cranes, the hawk and tiger deer (Chi-lin), the phoenix bird (Feng-Huang), emblem of the Empress of China, as the dragon, also represented, is the Emperor's emblem. The shoulder sustains a free floral design involving blue butterflies, and the mortar-formed neck displays gift objects, symbolical of official and Court promotion. The foot is in biscuit, bearing a small square sunken panel glazed in white.

Height, $19\frac{1}{2}$ inches.

Exhibited at a Loan Exhibition of Rare Chinese Porcelain held at the Galleries of Messrs. Duveen Brothers, New York, 1907.

(Illustrated)

First Afternoon

199—K'ANG-HSI CLUB-SHAPED VASE

575- Clear white hard paste. The embellishment, which consists of tree peonies, blossoming plum, magnolia, birds-of-paradise and rockeries, is beautifully painted in brilliant enamel colors of the *famille verte*. Has carved stand.

Height, 18½ inches.

200—K'ANG-HSI CLUB-SHAPED VASE

500- Beautifully painted decoration, in the enamels of the *famille verte*, of Chinese domestic scenes depicting interior views with ladies playing musical instrument, games, and engaged in other domestic and social pursuits. The shoulder is painted with diapers, chrysanthemums and leaf scrolls and the neck is encircled with a band of palmettes executed in colors to harmonize. Has carved stand.

Height, 18¼ inches.

201—GOURD-SHAPED VASE

222- Elaborately decorated in brilliant enamel colors with a design known as the "thousand flowers." Although this specimen bears the seal mark of the Ch'ien-lung period it is probably of a later period. Has tall carved stand.

Height, 17½ inches.

202—OVIFORM VASE WITH TRUMPET-SHAPED NECK

The body is invested with a pale opaque green glaze and richly decorated with baskets of flowers and detached blossoms which are painted in brilliant enamel colors. Round the neck are the "Eight Famous Horses" of the ancient Emperor Mu Wang. (Repaired at lip.)

Height, 18 inches.

203—CH' IEN-LUNG IMPERIAL VASE

375- Graceful pear-shape and of finished technique. Intricately fashioned with carved openwork casing and richly decorated in delicate enamel colors and gilding of the Ch'ien-lung period. The body is pierced in design of archaic dragon scrolls, coated with a pellucid celadon glaze and outlined with gilding; through this openwork glimpses are caught

Yanawaka

of a solid cylindrical core painted with peonies and scrolls in underglaze blue. The neck, shoulder, base and foot are invested with a rose-pink glaze which is entirely covered with a delicately engraved decoration of leafy scrolls, and over this ground is a beautifully painted embellishment of passion flowers, leafage and Joo-e heads. The foot underneath is enameled with a turquoise glaze and bears a seal mark of the period penciled in blue. Has carved stand.

Height, 18¼ inches.

204—CH' IEN-LUNG DECORATED TALL CYLINDRICAL VASE

Of thin hard paste porcelain. Invested with an ivory-white crackle glaze over which is an elaborate decoration of passion flowers and bold foliated scrolls, painted in brilliant green and low tones of enamel colors. Encircling the foot is a band of gadroons and round the mouth scepter-head scrolls.

Height, 21 inches.

205—CH' IEN-LUNG LARGE VASE

Flattened oviform, with trumpet-shaped neck and two scroll handles. Decorated over a brilliant white glaze with floral scrolls and symbols painted in coral-red, within panels outlined with brilliant cobalt-blue. (Repaired at foot and neck.) Has carved stand.

Height, 22½ inches.

206—CH' IEN-LUNG VASE

Tall oviform, with short spreading neck. Of thin sonorous porcelain and coated with a monochrome glaze of apple-green tint. Richly embellished with chrysanthemums in bloom, tree peonies, birds and rocks, executed in brilliant enamel colors, touched with gold. The neck inside and foot underneath are enameled with a turquoise-blue glaze. Bears a seal mark penciled in coral-red. Has carved stand.

Height, 19 inches.

Exhibited at a Loan Exhibition of Rare Chinese Porcelain held at the Galleries of Messrs. Duveen Brothers, New York, 1907.

207—YUNG CHÊNG LARGE VASE

61- Tall oviform, with short neck and broad mouth. Of thin sonorous porcelain and decorated with phoenixes, emblems of the Empress, tree peonies, blooming magnolias and prunus and rockeries, beautifully painted in brilliant enamel colors of the *famille rose*. (Repaired at lip.) Has carved stand.

Height, 19½ inches.

208—CH'ÏEN-LUNG LARGE VASE

60- Oviform, with trumpet-shaped neck, on which are two dragons ascending from the shoulder modeled in relief and undercut. The vase is of clear white hard paste of thin sonorous quality and is beautifully decorated. Numerous *Shou* characters and symbolical bats are painted over a brilliant white glaze in rose-pink, and cloud forms are penciled in brilliant underglaze blue. Borders and bands of Joo-e, head scrolls and gadroons are also in underglaze blue. The foot underneath is invested with a robin's-egg blue glaze and has a seal mark of the period penciled in cobalt-blue. Has finely carved black lacquer stand to harmonize.

Height, 21 inches.

209—K'ANG-HSI LARGE FAMILLE VERTE OVIFORM JAR

3-11- Of sonorous hard paste, and decorated with brilliant enamel colors of the *famille verte*. The embellishment consists of an elaborate palace and garden scene, figures of Chinese mandarin, ladies and attendants and richly painted border designs of Joo-e head, floral medallions, diaper patterns, and vermilion points. Has carved stand.

Height, 18¾ inches.



210—K'ANG-HSI LARGE VASE

Tall cylindrical shape, with short, flaring neck. The decoration, which is finely painted in the brilliant enamel colors characteristic of the K'ang-hsi *famille verte*, depicts a landscape in which are seen equestrian figures of a Chinese Emperor and his consort, warrior attendants and two pilgrims. The entire embellishment beautifully executed on a brilliant white ground. Has carved stand.

Height, 20 inches; diameter, $8\frac{1}{4}$ inches.

211—CH'YEN-LUNG BOTTLE-SHAPED VASE

Of clear white sonorous hard paste. Elaborately decorated with three boldly drawn dragons and fire emblems painted in peachbloom tint, and cloud forms and wave crest in brilliant underglaze blue. Has carved stand.

Height, $21\frac{3}{4}$ inches; diameter, 14 inches.



212—KANG-HSI FAMILLE VERTE TEMPLE JAR

1135- With its original hat-shaped cover. Of dense sonorous hard paste and elaborately decorated in the brilliant enamel colors with touches of gold of the best period of the reign of K'ang-hsi. The embellishment consists of numerous reserve panels, which are outlined with purple and decorated in enamel colors, including emerald-green, yellow, blue, vermilion, red and black, with landscape views, river scenes, equestrian and other figures. The intervening spaces are covered with butterflies and various flowers, executed in brilliant enamels on a translucent green ground speckled with black. The neck and cover are decorated to harmonize with the predominating embellishment. Has wood stand.

Height, 23 inches; diameter, 13½ inches.

213—K'ANG-HSI IMPERIAL PALACE JAR



With its original hat-shaped cover. Of dense sonorous porcelain and decorated in the brilliant enamel colors characteristic of the best period of the reign of K'ang-hsi. The elaborate embellishment, which is beautifully drawn and painted and imposed upon a brilliant white ground, consists of blooming tree peonies, prunus and magnolia in bloom, rockeries, young pines and sword grass, harmoniously arranged and effectively produced in enamel colors, including emerald-green, coral-red, purple, yellow, ivory-white, black and vermilion and

touches of gold and sapphire blue, applied over the glaze. Has wood stand.

Height, 24 inches; diameter, 14 inches.

214—LARGE BEAKER-SHAPED VASE

A comparatively modern production fashioned after a K'ang-hsi specimen. Of the green hawthorn type. The ground is of a pale opaque green color marked with irregular black lines to resemble cracking ice, and is covered with detached plum blossoms, Buddhistic emblems, various ornaments and utensils. In two large and various smaller reserve panels are flowers, peacocks, and other birds, fishes and grasses, the embellishment throughout being painted in brilliant enamel colors of the *famille verte* style. Has carved stand.

Height, 33¼ inches.

215—K'ANG-HSI LARGE VASE



Oviform body, with cylindrical neck, Fine Ch'ing porcelain, decorated in various enamel colors of the *famille verte* period. The painting presents vigorously rendered flowering peonies and other plants growing amid conventional rockeries, including a phoenix-bird or Imperial Feng-Huang, in brilliant plumage. The neck sustains floral decorations, and the shoulder is finished with a brocaded band involving vignettes and gift objects.

Height, 27 inches.

Exhibited at a Loan Exhibition of Rare Chinese Porcelain held at the Galleries of Messrs. Duveen Brothers, New York, 1907.

216—YUNG CHÊNG LARGE DECORATED PLATE

Thin sonorous hard paste. The center is decorated with a bold dragon amid fire emblems clutching the sacred pearl painted in coral-red. The border decoration, which is in coral-red and reserve, consists of chrysanthemum and leaf scrolls.

Diameter, 15¼ inches.

217—YUNG CHÊNG LARGE DECORATED PLATE

Sonorous hard paste. Elaborately decorated in five enamel colors with a dragon and phoenix, the emblem of the Emperor and Empress, cloud forms, floral and leafy scrolls, and other designs. On the under border are wave designs, rocks and flying bats. Bears a six-character mark. Has an elaborate, carved teakwood stand.

Diameter, 18½ inches.

218—CH'ÏEN-LUNG IMPERIAL PALACE VASE



Tall graceful form, with dragon handles modeled in relief on neck and gilded. The body is decorated with two upright panels, in which are shown "The Eight Immortals" and an assemblage of famous poets, all beautifully painted in a combination of delicate and brilliant enamel colors. Surrounding these panels the ground is covered with a beautifully painted decoration of passion flowers, leafy scrolls and symbolical emblems, executed in harmonious colors. On the neck are two reserve panels, containing landscape and figures. In one, the Three Star-gods: Fu, Lu, Shu, the Taoist triad of Happiness, Rank and Longevity, and in the other an Emperor and his attendants. Has carved wood stand.

Height, 31¼ inches; diameter, 13½ inches.

Exhibited at a Loan Exhibition of Rare Chinese Porcelain held at the Galleries of Messrs. Duveen Brothers, New York, 1907.

SECOND AND LAST AFTERNOON'S SALE

SATURDAY, FEBRUARY 6, 1915

AT THE AMERICAN ART GALLERIES

BEGINNING AT 2.30 O'CLOCK

Which includes Catalogue Nos. 219 to 369

CHINESE GLASS

219—PISTACHE-GREEN GLASS BOTTLE (*Ch'ien-lung*)

Globular bottle, with tall slender neck and low foot. Underneath the foot an engraved four-character mark of the period.

Height, 8 inches.

220—CANARY YELLOW GLASS BOTTLE (*Ch'ien-lung*)

Oviform body, with tall tubular neck. Underneath the foot an engraved character mark of the period.

Height, 9 inches.

221—OPAQUE SAPPHIRE BLUE BOTTLE (*Ch'ien-lung*)

The body of oviform shape, surmounted by a tall cylindrical neck. Has a four-character mark of the period. (Repaired.)

Height, 9 inches.

222—PISTACHE-GREEN BOTTLE (*Ch'ien-lung*)

Oviform body, with tall slender, cylindrical neck; slight markings of purple. Underneath the foot, an engraved character mark of the period.

Height, 9 inches.

JAPANESE LACQUERS

223—FIVE SMALL TABLETS

Brocade pattern and Japanese characters in gold and black lacquers.

224—TWO SMALL TRAYS

One black lacquer, with grasses and flowers penciled in gold; and the other, gold lacquer, with lily decoration.

225—VERMILION SAKE SAUCER

Landscap and water view in gold lacquer.

226—BLACK LACQUER PERFUME BOX

Chrysanthemum flowers in raised gold and mother-of-pearl inlay. Fine nashiji inlay.

227—GOLD LACQUER PERFUME BOX

Octagonal shape. Mount Fuji, and hawk on pine branch, in raised lacquers and gold mosaics.

228—GOLD LACQUER PERFUME BOX

Lozenge-shape. Helmet and musical instruments in raised lacquer. Fine quality nashiji interior.

229—BLACK LACQUER FLAT BOX

Highly polished surface. Iris, stream, and plank walk exquisitely executed in penciled and raised gold and mother-of-pearl inlay. The interior is finished in fine nashiji.

230—BLACK LACQUER SECTIONAL TEA-BOX

Leaf scrolls and crest penciled in gold and other lacquers.

231—AVENTURINE LACQUER TEA-BOX

Pine, bamboo and plum in blossom finely executed in raised gold.

Second and Last Afternoon

232—LACQUER PERFUME BURNER

Made in imitation of a section of bamboo. Kiri crest in raised gold lacquer.

Height, 3 inches.

233—BLACK LACQUER ROUND BOX

With dome cover. Floral and leaf scrolls in raised gold.

Height, 4 inches.

234—PERFUME BOX

Of worm-eaten wood, with ornamentations of birds, flowers, and blossoms in gold lacquer and mother-of-pearl.

235—DOUBLE LOZENGE-SHAPE BOX

In two sections. Fine quality gold lacquer, with pine trees and emblems decorated in raised gold. The interior finished in fine quality aventurine lacquer.

Height, 2¼ inches; length, 5½ inches.

236—AVENTURINE LACQUER BOX

Diamond shape. Decoration in raised gold.

237—BLACK LACQUER BOX

In two sections. Basket of pomegranates, butterflies, ferns and grasses in raised and penciled gold.

Height, 3¼ inches; length, 4¼ inches.

238—GOLD LACQUER BOX

Elaborate decoration of peonies and chrysanthemums in raised lacquers and engraved. The interior finished in fine nashiji and decorated with butterflies in raised gold.

Height, 2 inches; length, 5 inches.

239—LACQUER INRO

Four sections. Landscape and river view in raised lacquers. Has agate ojimi and carved ivory netsuke.

Second and Last Afternoon

240—INRO

Four sections. The famous "Fifty-three Views" in raised gold and other lacquers. Has ivory netsuke and metal-work ojimi.

241—INRO

Four sections. Decoration of Japanese house. Pine tree penciled in gold. Carved and lacquered netsuke and metal-work ojimi.

242—DESPATCH BOX

Fine quality of aventurine lacquer. Decoration of grasses and butterflies, exquisitely executed in raised gold.

Length, 7 $\frac{3}{4}$ inches.

243—DESPATCH BOX

Polished black lacquer. Maple trees, mountains and clouds, beautifully executed in raised gold and other lacquers. The interior finished in fine nashiji and decorated with branches of maple leaves.

Length, 9 inches.

244—SAKE BOTTLE

Aventurine lacquer. Decorated with Tokugawa crest.

Height, 8 $\frac{1}{2}$ inches.

245—HEXAGONAL TRAY

Decoration of leaves and berries in various lacquers, outlined with silver wire.

Diameter, 7 inches.

246—PAIR BLACK LACQUER SQUARE TRAYS

Highly polished surface. Decoration of peony scrolls and Tokugawa crests penciled in gold.

Second and Last Afternoon

247—SMALL OBLONG TRAY

Mountains and maple trees in raised gold and other lacquers, in mother-of-pearl mosaics.

248—TWO SQUARE TRAYS

One, aventurine lacquer, with landscape in raised gold; the other, nashiji lacquer, with chrysanthemum floating in stream penciled in gold.

6¾ inches square.

249—TWO OBLONG TRAYS

One, with Tokugawa crests, grasses and blossoms in gold; the other with sacred bridge, willow, pine and cloud forms, in gold lacquer and mother-of-pearl inlay.

Respective lengths, 8¾ and 9¾ inches.

250—OBLONG TRAY

Black lacquer. Mountains, torrent and maple trees, executed in raised and penciled gold. Swastika fret border.

Length, 12 inches; width, 8½ inches.

251—MANUSCRIPT BOX

Polished persimmon wood. The lid ornamented with the figure of a horse executed in lacquer in imitation of bronze and an inscription in raised gold. The inside of lid of polished black lacquer, with ferns and wild flowers in raised gold.

Length, 9¼ inches; width, 8¼ inches.

252—AVENTURINE LACQUER MANUSCRIPT BOX

The lid and interior of box decorated with landscape, thatched-roof hut, with disappearing figure and other designs artistically executed in raised gold and other lacquers and studded with silver.

Length, 8 inches; width, 7¼ inches.

Second and Last Afternoon

253—NASHIJI LACQUER WRITER'S BOX

The outer and inner surface, elaborately embellished with garden scene, pine, maple and a moonlight view, beautifully executed in raised gold and other lacquers. Furnished with ink stone and silver water bottle.

Length, 9½ inches; width, 8½ inches.

254—DAIMIO MANUSCRIPT BOX

To match the preceding writer's box.

Height, 6¾ inches; length, 16½ inches; width, 13 inches.

255—AVENTURINE LACQUER SECTIONAL BOX

Four compartments. Landscape in gold and other lacquers.

Height, 8½ inches.

256—SMALL BLACK LACQUER CABINET

With one large and six small drawers. Decoration in penciled and raised gold of cherry blossoms and leaf scrolls.

Height, 8 inches; width, 7 inches.

257—SMOKER'S CABINET

Decorated with mountainous landscapes and maple tree in raised gold and other lacquers.

Height, 6¾ inches; length, 8½ inches.

258—SHRINE TABLE

Carved wood, and gilded.

Length, 17 inches.

259—CARVED WOOD STAND

Of lotus design. Finished in gold and vermilion lacquer.

Height, 10 inches; diameter, 5½ inches.

260—DAIMIO TALL STAND

Square shape, on four tall curved legs. Of fine quality nashiji lacquer, and beautifully ornamented in raised gold with storks, pine tree, and bamboo.

Height, 17 inches; width, 12 inches.

261—BLACK LACQUER WRITER'S CABINET

With shelves, drawer and enclosures. Highly polished surface and exquisitely decorated in penciled and raised gold, with numerous fan designs. One drawer fitted with ink-stone, silver water bottle and writer's pencils. Has silver-plated mounts.

Height, 16 inches; length, 18 inches; width, 10 inches.

262—BEAUTIFUL GOLD LACQUER CABINET

Of exceedingly fine quality. Arranged with enclosures, drawers and irregular-shaped shelves. Exquisitely decorated in raised gold with panels of chrysanthemum flowers and swallows in flight. Borders of brocade pattern and mounts of repoussé and etched silver.

Height, 29½ inches; length, 25½ inches; width, 12¼ inches.

263—ELABORATE SHRINE CABINET

Of Japanese workmanship. The cabinet is finished in polished black lacquer and is ornamented with lotus and scrolls penciled in gold. In the base are numerous drawers. The interior is finished in pure gold leaf burnished and is fitted with a carved shrine, rammias and other ornamental accessories. Mounted throughout in gilded metal.

Height, 69 inches; width, 27 inches; depth, 24 inches

264—STANDING FIGURE OF BUDDHA

An old Japanese specimen of skilful and refined workmanship. Buddha is seen standing in graceful pose on a beautifully carved throne of lotus design and with a halo or background in the design of fire emblems carved in open-work. The figure, throne and halo are carved in wood and finished in pure gold-leaf. Has a specially designed mahogany and glass cabinet and pedestal table.

Height, 60 inches; width, 20 inches.

Recently regilded.

265—SEATED FIGURE OF BUDDHA

Artistically sculptured in wood and heavily gilded. Buddha is represented seated cross-legged on a throne earved in design of the sacred lotus. His faee, breast, arms and hands are finished in gold bronze, his hair blaek and robe of graee-ful folds gilded with gold-leaf. An elaborate halo or baek-ground is earved in design of eloud forms, and is also hea- vily gilded. Round the base are fine rock-crystal spheres. Has specially made mahogany and glass eabinet and table pedestal.

Height, 48 inches; width, 25 inches.

An old Japanese specimen, regilded recentiy.

MISCELLANEOUS OBJECTS

266—THREE WOOD SNUFFBOXES

Ornamented with eloisonné enamel.

267—CHINESE SNUFF BOTTLE

Porecelain, fashioned and glazed in imitation of einnabar lacquer.

268—THREE AGATE AND JADE ORNAMENTS

Fabulous animal in white jade. White jade disk, earved in openwork and fabulous animals in earved agate.

269—ORIENTAL PORCELAIN CENSER

Relief and enamel decoration of arehaie dragons and floral scrolls. Gilt metal openwork eover and earved stand.

270—TWO JAPANESE PORCELAIN BOWLS

Storks and arabesques in underglaze blue.

271—TWO SMALL JAPANESE TEAPOTS

One Satsuma, with figure and crest decoration in embossed gold and enamels; the other Kaga porcelain, decorated in crimson, gold, and underglaze blue.

272—SATSUMA TEAPOT

Melon shape. Decoration of female figure and Japanese musical instruments.

273—SNUFFBOX

Mosaic panel inserted in lid.

274—SEVEN PAPER CUTTERS

Ivory. Various sizes.

275—THREE RHODANATE SMALL TRAYS

Various shapes.

276—TWO RHODANATE TRAYS

Oval shape.

277—MINIATURE MANDOLIN

Veneered with tortoise-shell and inlaid with mother-of-pearl.

278—JAPANESE SHORT SWORD

Black lacquer scabbard, with stork decoration penciled in gold. Finely wrought shibuichi hilt, knife handles, and mounts which are inlaid with gold and other metals.

279—JAPANESE SHORT SWORD

Polished black lacquer, hilt and scabbard exquisitely decorated with cherry blossoms and maple leaves penciled in gold. Small knife handle, chopsticks and mounts beautifully wrought in silver, gold and shibuichi. Grooved blade.

Second and Last Afternoon

280—JAPANESE SHORT SWORD

Polished black lacquer scabbard, with incised kiri crest. Guard, knife handle, chopsticks and mounts skilfully wrought in silver, gold and shibuichi. Grooved and carved blade.

281—JAPANESE SHORT SWORD

Polished black lacquer scabbard. Cord-wound hilt and mounts, and knife handle of iron and shakudo inlaid with gold. Grooved blade.

282—EIGHTEENTH CENTURY KAKEMONO

By unknown artist, representing Buddha with his attendants Fugen, Monju and Jizo descending from Heaven. Artistically executed in low tones and gilding on a background of black. Framed under glass.

Height, 56 inches; width, 28 inches.

283—KAKEMONO

Rocky cliffs and river view painted in monochrome. By Sesson.

284—TWO FILIGREE SILVER SMALL TRAYS

One round and the other of serpentine outline.

285—GOLDEN BRONZE MINIATURE VASE

Oviform, with flaring neck.

286—JAPANESE SILVER ALTAR VASE

Wrought in openwork, and ornamented with relief maple leaves and cherry blossoms. Signed Chiku-ye-do.

287—PEKIN ENAMEL WINE CUP

Plum blossoms and bamboo branches on a dark blue ground, marked with gilt lines to resemble cracking ice.

288—JAPANESE CLOISSONÉ ENAMEL PERFUME BOX

Round shape. Flowers and butterflies in colors on a background. The cover of white ground, with sparrows and blossoms in colors.

289—PEKIN ENAMEL BOWL

Turquoise-blue ground, with flowers in brilliant colors. (Repaired.)

290—SILVER AND SHIBUCHI TRIPOD CENSER

Of artistic workmanship. It is of hexagonal shape with two scroll handles, and has a cover which is surmounted by a boldly wrought dragon. In numerous panels are Buddhistic emblems, legendary subjects, figures and cascade, wrought in gold, silver, shakudo and red copper, executed in relief and inlaid work. Signed Toshiyashi.

Height, 10½ inches; diameter, 8½ inches.

291—JAPANESE SILVER FLOWER BASKET

Of intricate basketwork pattern, with tall loop handle. On the shoulder are two bronze crabs. Signed Kiri-Kosho-Kaisha.

Height, 16½ inches; diameter, 9 inches.

292—OLD JAPANESE HAMMERED BRONZE GONG

Bowl shape. Of fine tone. Is inscribed: "Possession of Mr. Tokunaga 3rd year of Gen roku period." Has beater and cushion.

Height, 8½ inches; diameter, 11 inches.

293—PAIR ANTIQUE CHINESE BRONZE VASES

Quadrangular bodies, with circular-shaped bases and necks, openwork panels and incised Greek fret band.

Height, 12½ inches.

Second and Last Afternoon

294—ANTIQUE CHINESE BRONZE LARGE VASE

Flattened oviform, with two monster-head handles on neck. Ornamented with archaic dragon scrolls and ogre heads in sunken panels and round neck. Coated with an interesting green and red patina.

Height, 18 inches.

295—PAIR OLD CHINESE CLOISSONNÉ VASES

Club shape. Turquoise-blue ground, with lotus flowers, tree peonies and plum in bloom, executed in brilliant colors of enamels. Ch'ien-lung period.

Height, 13½ inches.

296—VERY LARGE CHINESE CLOISSONNÉ ENAMEL VASE

Noble pear-shape, with flaring neck and spreading base. In the style of a Ming specimen. Round the body are several five-clawed dragons amid fire emblems and cloud forms pursuing the sacred pearl. The shoulder is encircled by a band of harmonious design, and the neck and base are embellished with large lotus flowers, archaic dragon scrolls and palmettes. The entire ornamentation is executed in brilliant colors of enamel on a turquoise ground.

Height, 27 inches; diameter, 15½ inches.

297—FRENCH PORCELAIN COVERED TEMPLE JAR

In imitation of an antique Chinese specimen. On a black ground is an elaborate decoration of chrysanthemums and leafy scrolls in brilliant enamel colors, and in reserve panels of varying shapes are flowers and chickens also in brilliant enamels. Has carved stand.

Height, 16½ inches.

298—FRENCH PORCELAIN OVIFORM VASE

In imitation of a K'ang-hsi specimen. Invested with a brilliant powder-blue glaze and decorated with two reserve panels of flowers in enamel colors. Mounted in gilt brass in the style of Louis Quinze.

Height, 16½ inches.

299—FRENCH PORCELAIN JAR

Ovoid, with hat-shaped cover. In imitation of an antique Chinese specimen. Covered with a powder-blue glaze and decorated with figures and landscapes within reserve panels. (Repaired.)

Height, 19 inches.

300—PAIR SÈVRES BISCUIT VASES

Urn shape, with covers. Relief ornamentation of allegorical subjects, cupids and garlands. Mounted in gilt metal.

Height, 15½ inches.

301—AUSTRIAN PORCELAIN VASE

Anphora shape, with gilt handles on a square pedestal. Invested with a green glaze and decorated with panels of figure subjects in enamels and gilding. Signed Walter.

Height, 29½ inches.

302—PAIR CANDELABRA

French porcelain vases, decorated in the style of Chinese *famille rose*. Mounted in gilt metal, and each fitted with seven branches of lily design and arranged for gas.

Each: Height, 41 inches.

BRONZES, PEDESTALS AND CABINETS

303—SIENA MARBLE MANTEL CLOCK AND CANDELABRA

Empire. The movement is supported by a gilt bronze shell-shaped car of Venus, drawn by two swans. The Goddess is seated above, her draperies floating far above her head. Pair of candle branches, to match, for five lights each.

Height, 20½ inches; length of clock, 16½ inches.

304—PAIR OF GILT BRONZE CANDELABRA

For six lights each. The candle branches of leaf design, rise from cornucopias supported by Amorini. The latter stand on truncated, fluted columns which are wreathed with flowers. Shaped bases.

Height, 34½ inches.

Second and Last Afternoon

305—BRONZE STATUETTE

Man dancing. Signed: I. Sanson, Roma.

Height, 28½ inches.

306—BRONZE GROUP

“Hebe and the Bird of Jove.” Signed Franceschi. On circular base.

Height, 29½ inches.

307—BRONZE STATUETTE

Venus de Milo. Reduced copy.

Height, 40½ inches.

308—TEAKWOOD LOW PEDESTAL

Circular top with marble insert. Carved and pierced.

Height, 15 inches.

309—TEAKWOOD LOW PEDESTAL

Carved and pierced. Shaped square top with marble insert.

Height, 18 inches; diameter, 16 inches.

310—MAHOGANY PEDESTAL

Empire style, on four paw feet.

Height, 30½ inches; diameter, 15 inches.

311—PAIR OF TEAKWOOD PEDESTALS

With revolving tops, four carved scroll legs and undershelves.

Height, 31½ inches; diameter of top, 10½ inches.

312—PAIR OF TEAKWOOD TALL PEDESTALS

Elaborate carved decoration of grapes and leaves. The top with marble insert.

Height, 37 inches; diameter, 15 inches.

313—PAIR TEAKWOOD TALL PEDESTALS

To match the preceding.

Height, 37 inches.

Second and Last Afternoon

314—PAIR MAHOGANY TALL PEDESTALS

Twisted columns, square tops and bases.

Height, 41 inches; diameter, 16 inches.

315—GREEN MARBLE PEDESTAL

Plain shaft and circular top.

Height, 42½ inches; diameter, 11 inches.

316—RED MARBLE PEDESTAL

Plain shaft, with square top and base. Gilt bronze mounts.

Height, 42½ inches; diameter, 12½ inches.

317—GREEN MARBLE PEDESTAL

Plain and ribbed shaft, with circular, revolving top.

Height, 44 inches; diameter, 11½ inches.

318—BAROMETER AND THERMOMETER

Burl walnut case. By J. Gall, New York.

Height, 39 inches.

319—CARVED WOOD FIRE SCREEN

Chinese. The rounded top and sides have cloud form carvings in low relief. In the center is a medallion with a carving of a dragon in low relief and surrounded by flame emblems. Three scroll supports.

Height, 35 inches; width, 33 inches.

320—CARVED RED LACQUER TABLE

With the edge scalloped and with carvings of butterflies, phœnix and leaves in low relief. The center of polished black lacquer ornamented with kiri leaves, flower and bird medallions in colored lacquers. Standard and three scroll legs carved, the former with a dragon among cloud forms.

Height, 27½ inches; width, 30 inches.

Second and Last Afternoon

321—CIRCULAR-TOP TABLE OF TEAKWOOD

With low relief carvings of leaf scrolls, berries and leaves in low relief and set with four porcelain plaques. The latter decorated with garden scenes, flowers and butterflies in brilliant enamels. The skirt carved and pierced, and the standard and three scroll legs carved.

Height, 33 inches; diameter, 34 inches.

322—SMALL CASE

The top, sides and ends of glass. Black lacquer stand.

Height, 33 inches; length, 24 inches; depth, 12 inches.

323—GEM AND MINIATURE CABINET

Mahogany reeded pillar corners and gilt brass mounts and moldings. The upper portion has a lift-over top and the lower a glass shelf and full-width door which is of glass, as are the top and sides.

Height, 32 inches; length, 31½ inches; depth, 18½ inches.

324—MAHOGANY WALL CABINET

Half oval, with pierced brass rail, moldings and mounts and mirror back. The door and sides of curved glass fitted with two glass shelves. Four cabriole legs.

Height, 61 inches; length, 38 inches; depth, 16 inches.

325—MAHOGANY WALL CABINET

Empire style. With dark green marble top, chased ormolu moldings, busts, winged lions, and other ornaments. The upper portion of the doors and sides are of glass; and there is a cupboard below. Two glass shelves.

Height, 63 inches; length, 39 inches; depth, 16 inches.

326—MAHOGANY WALL CABINET

With brass rail, moldings and mounts and a mirror back. The front, two end doors and two glass shelves are of glass. Supported by four tall legs, turned and reeded and with under and cross braces.

Height, 67½ inches; length, 35 inches; depth, 27½ inches.

327—MAHOGANY WALL CABINET

Inlaid with satinwood. With mirror back, curved glass ends, one door and glass shelves.

Height, 61 inches; length, 48 inches; depth, 14 inches.

328—MAHOGANY AND PARQUETRY CABINET

Louis XV style, with a composite marble top and mirror back. Beautifully chiseled ormolu mounts of garlands of roses, youthful fauns, and female busts. The upper portion has glass sides, two shelves and door. Below is a cupboard.

Height, 67 inches; length, 38 inches; depth, 17 inches.

329—MAHOGANY WALL CABINET

With elaborate gilt brass mounts and moldings, and painted Vernis Martin panels. The upper central part has a mirror back, and glass sides, one shelf and a long door. At either side are shelves and below are three cupboards.

Height, 63 inches; length, 44 inches; depth, 15½ inches.

330—MAHOGANY WALL CABINET

With mirror back, curved ends of glass, one glass door and fitted with four glass shelves.

Height, 64 inches; length, 46½ inches; depth, 16 inches.

331—CARVED ROSEWOOD WALL CABINET

The top has a pierced brass rail and a cupboard with mirror back, glass sides and two glass doors. Mirror back below and side and under-shelves and supported by brass paw feet.

Height, 52½ inches; length, 48 inches.

Second and Last Afternoon

332—ROSEWOOD WALL CABINET

Similar to the preceding, but slightly larger and with less carving.

Height, 56 inches; length, 55 inches.

333—MAHOGANY WALL CABINET

With pierced brass rail and mounts and mirror back. Fitted with two glass doors, sides and four glass shelves.

Height, 61 inches; length, 49 inches; depth, 17 inches.

334—FRENCH WALNUT PARQUETRY CABINET

Louis XV style, with finely chiseled mounts and moldings of gilt bronze, mirror back and two glass shelves. The glass sides and door of the upper portion are of shaped glass, and below is a cupboard.

Height, 68½ inches; length, 28½ inches; depth, 14 inches.

335—EBONY CABINET

With brass moldings and inlays of satinwood. The upper portion has a mirror back, beveled plate glass sides, front and central door. Below is a cupboard with one door.

Height, 74 inches; length, 53 inches; depth, 19 inches.

336—LIBRARY TABLE

Mahogany, with carved edge and deep skirt with two drawers. Four curved supports with paw terminals, which rest on oblong bases and crushed ball feet.

Height, 31 inches; length, 54 inches; width, 36½ inches.

337—LARGE MANTEL MIRROR

Carved and ebonized frame set with cast brass plaques.

Height, 47 inches; width, 67 inches.

ORIENTAL RUGS

338—ANATOLIAN PRAYER RUG

Red field, with two side candles and hanging lamp, and corner ornaments; one wide and three narrow borders in blue, red, white and yellow. One end finished with long fringe.

Length, 5 feet 3 inches; width, 4 feet 2 inches.

339—FERAGHAN RUG

Pink center with central medallion in ivory-white, with conventional floral designs in blue, red, yellow and green. One wide and two narrow borders to correspond.

Length, 5 feet 4 inches; width, 4 feet 2 inches.

340—ANATOLIAN PRAYER RUG

Old-red prayer field, with corner ornaments in slate blue with star. Shaped floral patterns in various colors. One wide and two narrow borders in fawn and light blue.

Length, 6 feet 2 inches; width, 4 feet 4 inches.

341—ANATOLIAN PRAYER RUG

Light blue center, with a hanging lamp and two candles. Above the prayer field are corner-pieces and a wide border of scarlet, with floral and leaf patterns in blue, yellow and white. Four narrow borders.

Length, 6 feet 3 inches; width, 4 feet 3 inches.

342—FERAGHAN RUG

White central field, with leaf and flower designs and two square panels with blue fields framed in red, with floral ornamentation to correspond with the above. One wide and three narrow borders.

Length, 6 feet 8 inches; width, 4 feet 5 inches.

343—FERAGHAN RUG

Dark blue central panel with floral patterns and three borders. The prevailing tone is pink.

Length, 7 feet; width, 4 feet 1 inch.

344—FERAGHAN RUG

Deep rose field with diamond and star designs in red, white, blue and green. One wide and four narrow borders in similar colors.

Length, 7 feet 6 inches; width, 4 feet 3 inches.

345—MOSUL RUG

The long central panel is red, with medallions in white and two shades of blue. Two wide borders in white, red and blue with squares and conventional flowers to correspond.

Length, 8 feet 7 inches; width, 4 feet 4 inches.

346—MOSUL RUG

Red field with two central medallions in white with conventional floral designs in red, green, blue and white. A wide border has pear designs on a dark blue ground.

Length, 9 feet; width, 3 feet.

347—KARABAGH RUG

Deep blue field with geometrical medallions, birds and flowers in green, red, blue and yellow. Three narrow borders to correspond.

Length, 11 feet; width, 3 feet 5 inches.

348—KHORASSAN RUG

Red field, with a large central medallion in olive green covered with floral patterns in red, pink and shades of blue. The corner ornaments, wide and narrow borders in blue and other colors to harmonize.

Length, 13 feet 6 inches; width, 9 feet 8 inches.

ETCHINGS, ENGRAVINGS AND WATER COLORS

349—ETCHING

“Cathedral.” By Remington. Remark proof on Creswick paper, signed by artist.

350—ETCHING

“The Village Festival.” By Aug. Blanchard after S. Alma-Tadema. First state; artist’s proof on India paper. Signed by both artists.

351—ETCHING

“The First Lesson.” By Mercier after A. M. Turner. Signed. Remark proof on vellum paper.

352—ENGRAVING

“Preparing for the Hunt.” By Barlow.

353—PHOTOGRAVURE

“The Bath.” After S. Alma-Tadema.

354—ETCHING

“Return of the Shepherd.” By Fred Slocumbe. Signed remark proof on Creswick paper.

355—ETCHING

“By the Lily Pond.” By Max Rosenthal. Signed remark proof on Japanese vellum paper.

356—ETCHING

“Mid-day Rest.” By Domman. Signed remark proof on parchment.

357—ETCHING

“Winter Afternoon.” By Bentley. Signed proof on satin.

Second and Last Afternoon

358—ETCHING

“Near Paris.” By Greux after Daubigny. Signed remark proof on parchment.

359—ETCHING

“When We Were Twenty-one.” After W. Dendy Sadler. Signed remark proof. Gilt frame.

360—TWO COLORED PRINTS

One after Boucher, the other after Charlier. Gilt frames.

361—COLORED PRINT

“Le Jardinier Galant.” Gilt frame.

362—COLORED PRINT

“L’Essai du Corset.” Gilt frame.

363—WATER COLOR

“The Bend of the River.” By Ch. Lepeintre. Signed at the lower left.

Height, 10 inches; width, 13 inches.

364—WATER COLOR

“River.” By Ch. Lepeintre (?). Signed at the lower right.

Height, 13 inches; width, 10 inches.

365—WATER COLOR

“Trees.” By E. Gignoux. Signed at the lower right.

Height, 17 inches; width, 13½ inches.

366—WATER COLOR

“The Light House.” Signed at the lower left. Name not clear.

Height, 12 inches; width, 20 inches.

Second and Last Afternoon

367—WATER COLOR

“The Breaking Wave.” By G. L. Hall. Signed at the lower left and dated 1873.

Height, 25 inches; width, 18 inches.

368—WATER COLOR

“Fruit and Flowers.” By Rivorie. Signed at the lower right.

Height, 23½ inches; width, 18½ inches.

369—FRAMED MODEL

Doorway of the Alhambra, in marble, carved, colored and gilded.

Height, over all, 29 inches; width, 18 inches.

AMERICAN ART ASSOCIATION,

MANAGERS.

THOMAS E. KIRBY,

AUCTIONEER.

FOR INHERITANCE TAX

AND OTHER PURPOSES

THE AMERICAN ART ASSOCIATION

IS EXCEPTIONALLY WELL EQUIPPED
TO FURNISH

INTELLIGENT APPRAISEMENTS

OF

ART AND LITERARY PROPERTY
JEWELS AND PERSONAL EFFECTS OF EVERY
DESCRIPTION

IN CASES WHERE

PUBLIC SALES ARE EFFECTED

A NOMINAL CHARGE ONLY WILL BE MADE

THE AMERICAN ART ASSOCIATION

MADISON SQUARE SOUTH
NEW YORK

TELEPHONE, 3346 GRAMERCY

COMPOSITION, PRESSWORK
AND BINDING BY







76

Duke University Libraries



D00291362N

709.51 K58G 138710

American Art. Assoc.

Illustrated catalogue ..

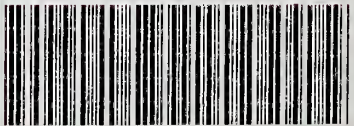
Beautiful old Chinese Porce-

DATE

709.51 K58G

138710

D00291362N



DUKE LSC