

AIRCRAFT ACTION REPORT

RESTRICTED
(Reclassify when filled out)

SECRET

I. GENERAL

(a) Unit Reporting VT-45 (b) Based on or at USS SAN JACINTO (c) Report No. 23
 (d) Take off: Date 18 March 1945 Time (LZT) 1215 (Zone); Lat. 31 - 00 Long. 133 - 24
 (e) Mission Strike Isami A/P, Kyushu, Japan (f) Time of Return 1630 (Zone)

II. OWN AIRCRAFT OFFICIALLY COVERED BY THIS REPORT.

TYPE (a)	SQUADRON (b)	NUMBER			BOMBS AND TORPEDOES CARRIED (PER PLANE) (f)	FUZE, SETTING (g)
		TAKING OFF (c)	ENGAGING ENEMY A/C (d)	ATTACKING TARGET (e)		
TBM-3	VT-45	8	0	8	Twelve 100/ G.P.	None - None Tail .025

III. OTHER U. S. OR ALLIED AIRCRAFT EMPLOYED IN THIS OPERATION.

TYPE	SQUADRON	NUMBER	BASE	TYPE	SQUADRON	NUMBER	BASE
P-51	VF-45	9	USS SAN JACINTO	SB2C	VB-6	15	USS FRANKLIN
TBM	VT-47	9	USS BATAAN	SB2C	VB-5	12	USS HANGCOCK
TBM	VT-6	15	USS FRANKLIN	VF	VF-5	16	USS HANGCOCK
TBM	VT-5	15	USS HANGCOCK	VF	VF-6	16	USS FRANKLIN
				P-51	VF-47	9	USS BATAAN

IV. ENEMY AIRCRAFT OBSERVED OR ENGAGED (By Own Aircraft Listed in II Only)

(a) TYPE	(b) NO. OBSERVED	(c) NO. ENGAGING OWN A/C	(d) TIME ENCOUNTERED	(e) LOCATION OF ENCOUNTER	(f) BOMBS, TORPEDOES CARRIED; GUNS OBSERVED	(g) CAMOUFLAGE AND MARKING
			(ZONE)			
			(ZONE)			
			(ZONE)			

(h) Apparent Enemy Mission(s) _____
 Did Any Part of _____
 (i) Encounter(s) Occur in Clouds? _____ If so, Describe Clouds _____
 (YES OR NO) (BASE IN FEET, TYPE AND TENTHS OF COVER)
 Time of Day and Brilliance _____
 (j) of Sun or Moon _____ (k) Visibility _____
 (NIGHT, BRIGHT MOON; DAY, OVERCAST; ETC.) (MILES)

V. ENEMY AIRCRAFT DESTROYED OR DAMAGED IN AIR (By Own Aircraft Listed in II Only).

(a) TYPE ENEMY A/C	(b) DESTROYED OR DAMAGED BY:				(c) WHERE HIT, ANGLE	(d) DAMAGE CLAIMED
	TYPE A/C	SQUADRON	PILOT OR GUNNER	GUNS USED		
None						

ENCLOSURE (B)

AIRCRAFT ACTION REPORT

RESTRICTED
(Reclassify when filled out)

(OMIT THIS SHEET IF NO ATTACK WAS MADE)

SECRET

REPORT No. **29**

XI. ATTACK ON ENEMY SHIPS OR GROUND OBJECTIVES (By Own Aircraft Listed in II Only).

(a) Target(s) and Location(s) **Hittagahara and Miyasaki A/F's. Isumi A/F-hangers & Installations** (b) Time Over Target(s) **1407 - 1430** (Zone) **9**

(c) Clouds Over Target **None at Isumi 2/10 at 8,000 feet at Hittagahara and Miyasaki**
(BASE IN FEET, TYPE AND TENTHS OF COVER)

(d) Visibility of Target **Clear** (e) Visibility **20 Miles**
(CLEAR, HAZY, PARTIALLY OBSCURED BY CLOUDS, ETC.) (MILES)

(f) Bombing Tactics: Type **GLIDE** Bomb Sight Used **Mark 8**
(LEVEL, GLIDE OR DIVE) (TYPE)

Bombs Dropped per Run **12** Spacing **Select, 25 or 40 ft.** Altitude of Bomb Release **3500 - 6000**
(NUMBER) (FEET) (FEET)

(g) Number of Enemy Aircraft Hit on Ground: Destroyed **None** Probably Destroyed **4 S/E** Damaged **4 S/E, 2 T/E**

(h) AIMING POINT	(i) DIMENSIONS OR TONNAGE	(j) NO. A/C ATTACKING (k) SQUADRON	(l) BOMBS AND AMMUNITION EXPENDED, EACH AIMING POINT	(m) NO. HITS On Aiming Point	(n) DAMAGE (None, slight, serious, destroyed or sunk)
Isumi - Hangers and installations south side of field.	1000 Ft. by 1000 Ft.	5 VT-45	60	50	Serious. See below several buildings destroyed.
Isumi - 20 S/E and 12 T/E planes at NE part of field.	800 Ft. by 1000 Ft.	1 VT-45	12	6 or 7	Serious
Hittagahara A/F - hangar on N side of field.	150 Ft. by 200 Ft.	1 VT-45	11	2 or 3	Serious, burned.
Miyasaki A/F - group of storage bldgs. 1/2 mile N. of field.	300 Ft. by 500 Ft.	1 VT-45	8	Unobs.	Unknown

(o) RESULTS: (For all hits claimed on ship targets and for land targets of special interest, draw diagram, top or side view or both, as appropriate, showing type and location of hits. For all targets give location and effect of hits, and identify by numbers above. Use additional sheets if necessary).

Miyasaki A/F Shop buildings on NE edge of runway.	100 Ft. by 300 Ft.	1 VT-45	3	3	Serious, one blew up.
---	--------------------	------------	---	---	-----------------------

1. Isumi Five IJN's attacked hangers and installations on south side of field. The attached photographs show damage done by these planes and accompanying planes on strike, some of which attacked the same area. Photograph "A" attached shows two hangers (in circle marked "X") undamaged as two of the VT-45 planes which had not yet attacked dropped their bombs. This picture was taken through bomb bay window. The other two photographs "B" and "C" which were taken immediately after the attack by VT-45 photo plane shows that those two hangers (in circle marked "X") have been heavily hit, gutted and probably destroyed. The three photographs show that the bombing of this area was effective and the fires shown undoubtedly carried the destruction further. Hits on the four (4) medium and one (1) large hangar adjacent to the hangars marked "X" were scored by these planes.

(p) Were Photographs Taken? **Yes** Photographs of Damage, When Taken, Should Be Attached By Staple.

SECRET

Report No. 23

XI. ATTACK ON ENEMY SHIPS OR GROUND OBJECTIVES. (CONT'D.)

2. Six or seven 100# G.P. bombs were dropped directly on the area where these planes were located and it is believed that severe damage was done to a number of them although none was directly hit or burned.
3. Ensign Sharp saw a row of hangars at Nittagahara all but one of which was burning. He dropped eleven (11) bombs on that one in a string (25 ft. spacing). Several hits were scored on the hangar and it was burning as the plane retired.
4. & 5. Lieutenant Riley dropped eight (8) of his bombs on a group of storage buildings 1/2 mile north of Miyasaki Airfield with unobserved results. He continued on to Miyasaki A/F and dropped three (3) more on a group of small workshops or service buildings at NE edge of runway. All three (3) bombs fell on the buildings and one of these was seen to explode. Smoke from this building made it impossible to determine whether the other buildings were also burning.

XII. TACTICAL AND OPERATIONAL DATA (CONT'D.)

Lieutenant Riley saw a group of what appeared to be military storage buildings about 1/2 mile north of Miyazaki Field. He dropped eight (8) bombs on them in a good run but did not observe the results. He dropped three (3) more bombs on a group of medium size shop buildings on the N.E. edge of Miyazaki Airfield. One of these was observed to blow up. The twelfth bomb in both planes hung up even though the emergency manual release was used, but these bombs were successfully jettisoned later. After completing these bombing attacks the two TBM's returned to base with their accompanying fighters.

PROPAGANDA LEAFLETS

Twenty-eight (28) bundles of propaganda leaflet Serial No. 2016 were dropped over the central portion of Kyushu from the town of Miyazaki on the east coast to the town of Izumi on the west coast. Each bundle contained 750 sheets and, therefore, a total of 21,000 sheets were dropped.

AIRCRAFT ACTION REPORT

SECRET

REPORT No. **23**

XIII. MATERIAL DATA. (Comment freely on performance or suitability, following check list at left. Use additional sheets if necessary).

ARMAMENT

- Guns, Gunsights
- Turrets
- Ammunition
- Bombs, Torpedoes
- Bomb Sights
- Bomb Releases

COMMUNICATIONS

- Radio, Radar
- Homing Devices
- Visual Signals
- Codes, Ciphers

RECOGNITION

- IFF
- Signals
- Battle Lights
- Procedures

PROTECTION

- Armor; Points and Angles of Fire Needing Further Protection
- Leak Proofing

EMERGENCY EQUIPMENT

- Parachutes
- Life Belts, Life Rafts
- Safety Belts
- Emergency Kits
- Rations, First Aid

NAVIGATIONAL EQUIPMENT

- Compasses
- Driftsights
- Octants
- Automatic Pilots
- Charts
- Field Lighting

INSTRUMENTS

- Flight
- Power Plant

OXYGEN SYSTEM

CAMOUFLAGE AND DECEPTION DEVICES

STRUCTURE

- Airframe
- Control Surfaces
- Control System
- Dive Flaps
- Landing Gear
- Heating System
- Flight Characteristics At Various Loadings

POWER PLANT

- Engines
- Engine Accessories
- Propellers
- Lubricating System
- Starters
- Exhaust Dampers

HYDRAULIC SYSTEM

ELECTRICAL SYSTEM

- Auxiliary Plant
- Lights

FUEL SYSTEM

FLIGHT CLOTHING

MAINTENANCE

BASE FACILITIES

- Plane Servicing Equipment
- Personnel Facilities

The failure of Lieutenant Riley's oxygen system was apparently due to freezing of some part of the system. Although the temperature was not recorded all pilots reported that it was very cold at 18,000 feet over Kyushu. The oxygen system in Lieutenant Riley's plane failed completely a little over 100 miles from the force at 18,000 feet. After Lieutenant Riley had been down at lower altitudes for about an hour and was returning to base he checked the oxygen system and found that it was operating properly. It appeared in perfect condition on return to base.

REPORT PREPARED BY:

APPROVED BY:

Malcolm I. RUDOCK, Lieut., USNR.

J. G. FINGARI, Lieut., USNR.

22 March 1945

SIGNATURE

A.C.I. Officer

RANK AND DUTY

SIGNATURE

Commanding Officer.

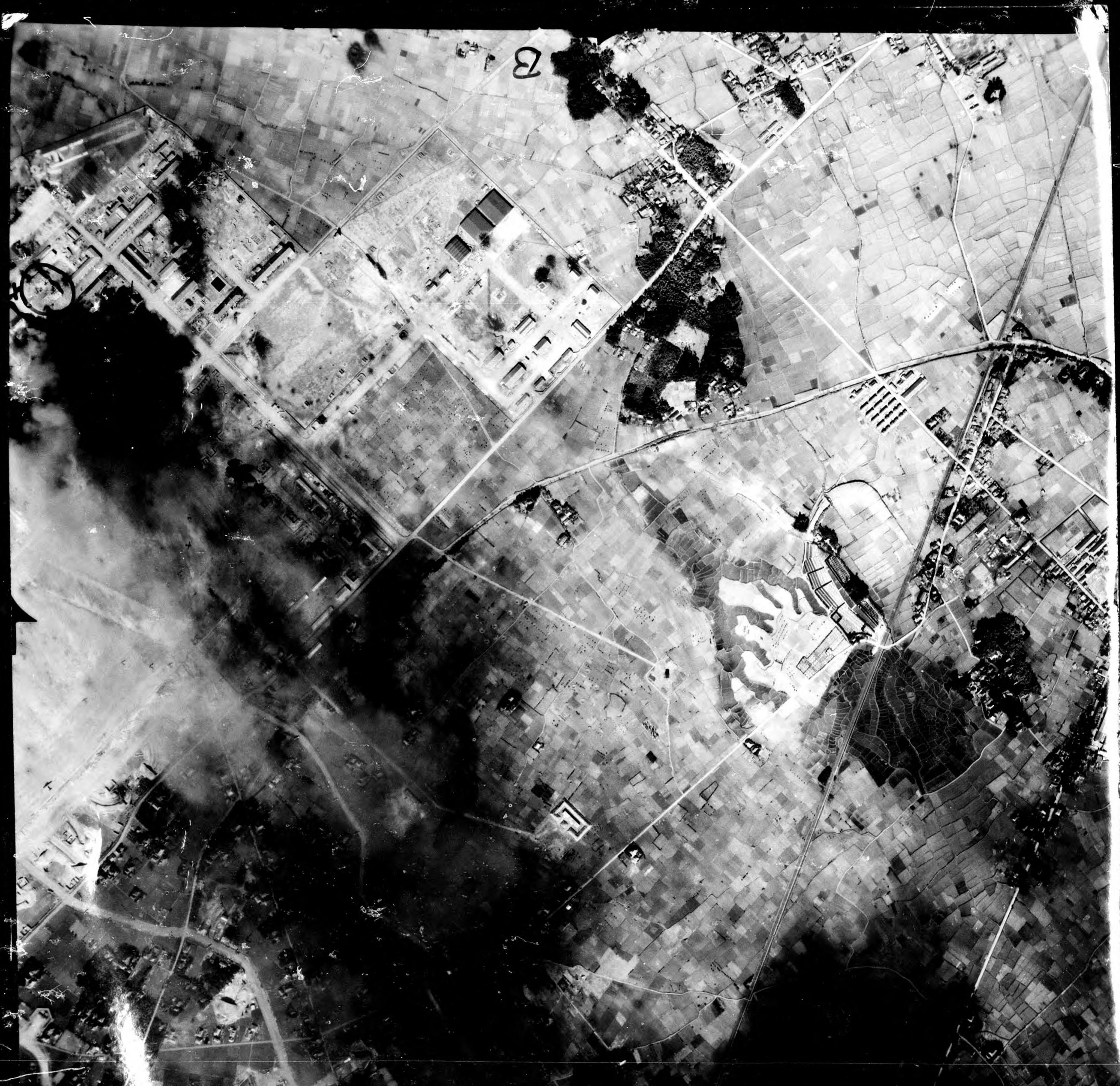
RANK AND DUTY

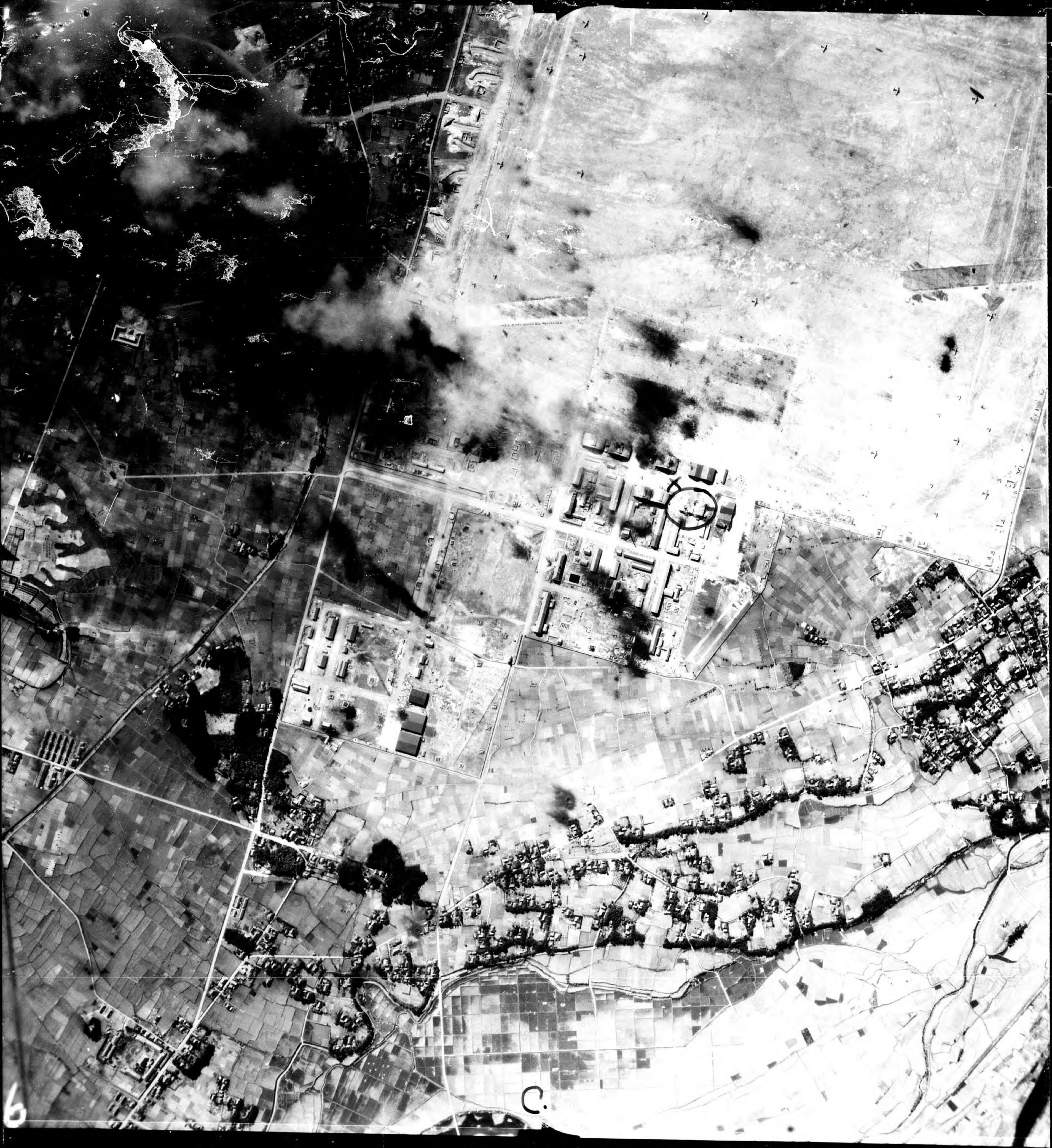
DATE



SANJAC 13K MAR 18-45 1445(9) F-8 15" VAR EZUMI A/F (KYUSHU) ONE

A.





6

C.