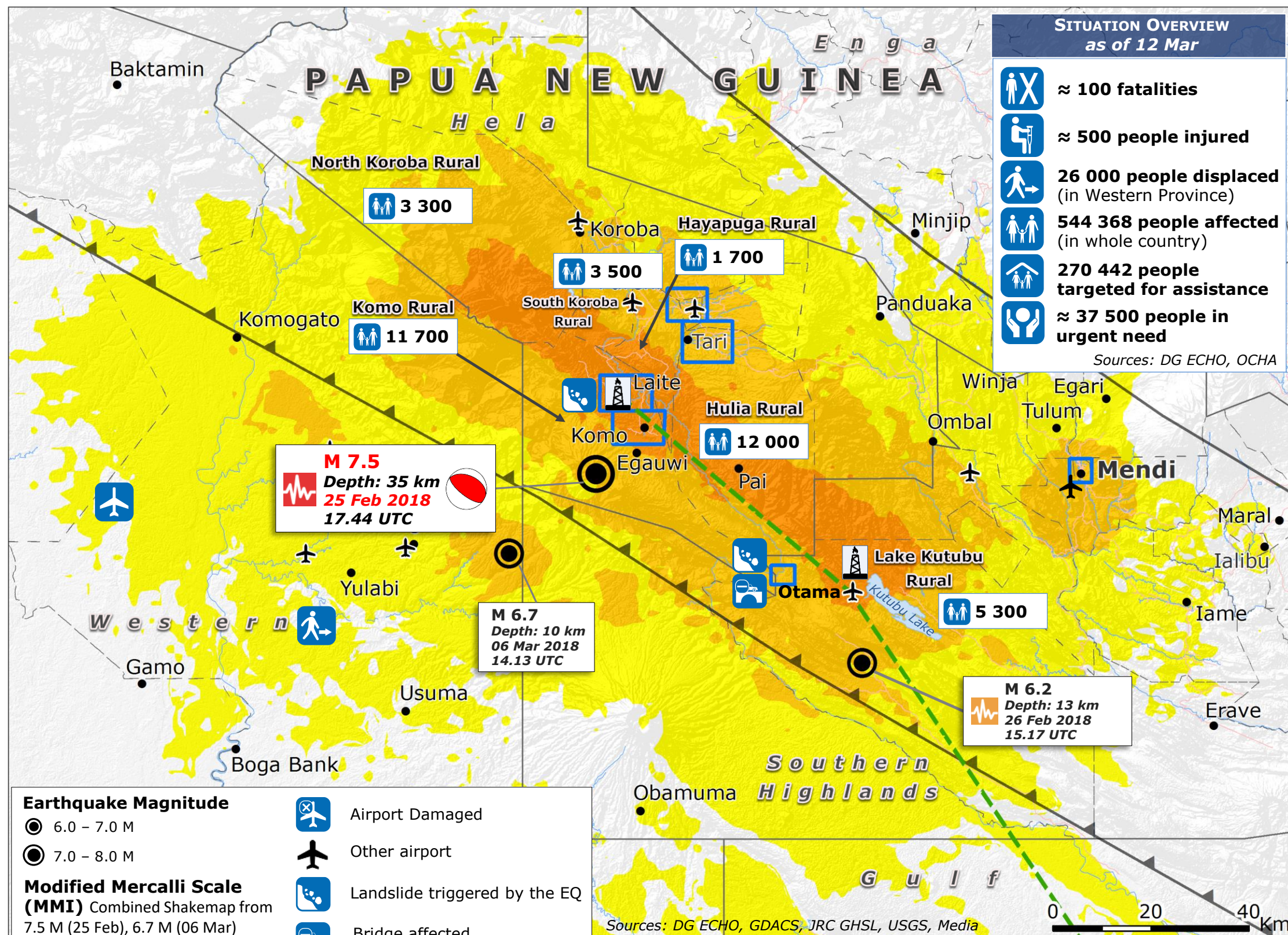


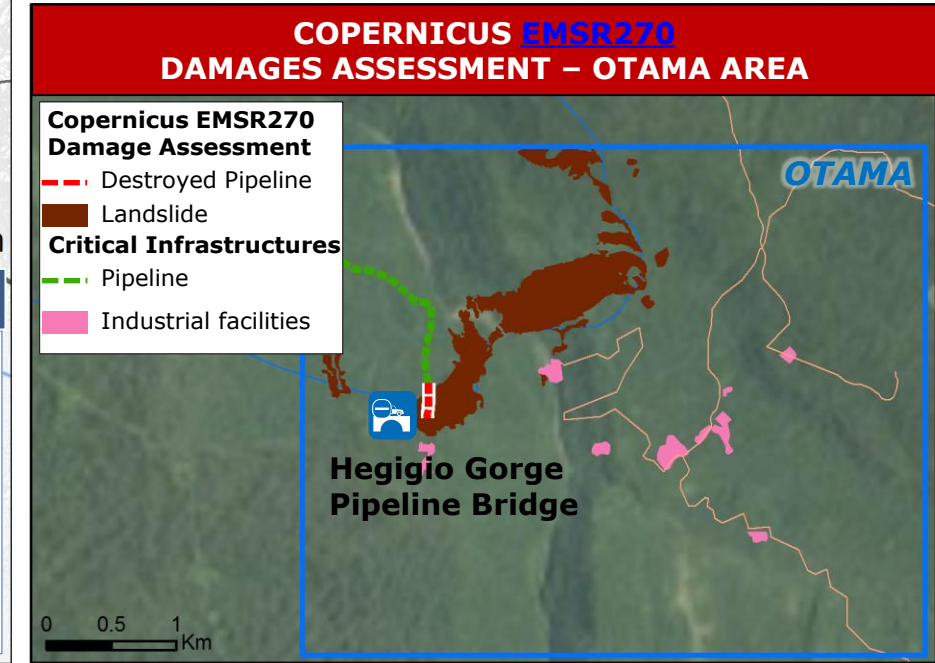
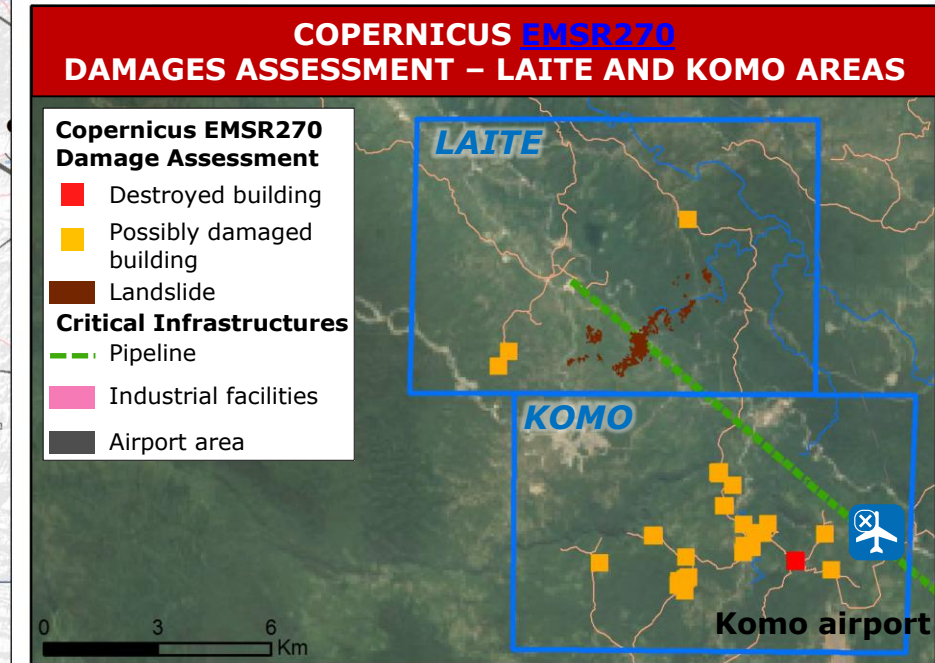
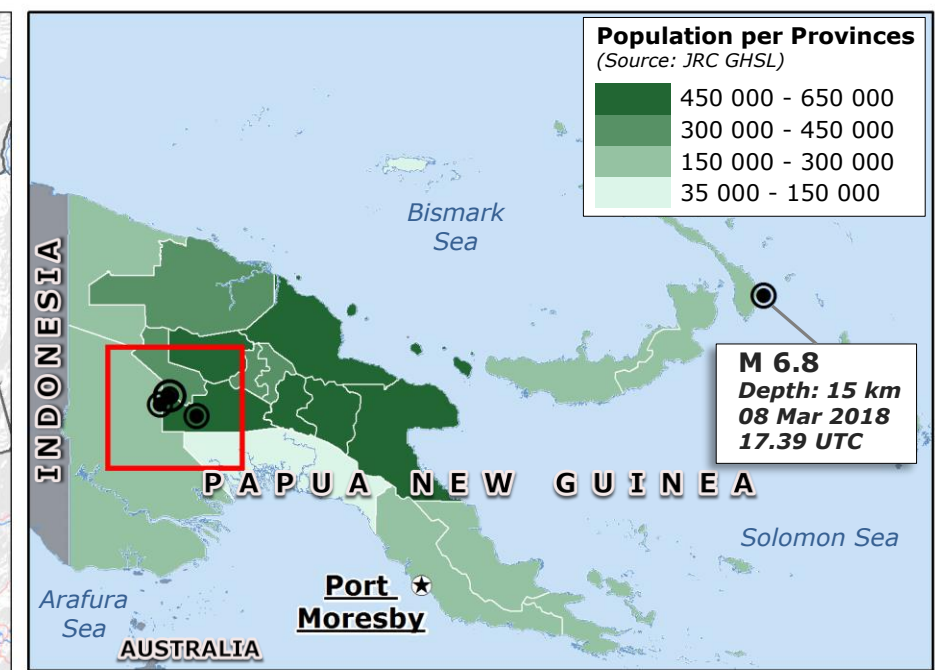
# Papua New Guinea | Earthquakes Aftermath



### SITUATION OVERVIEW as of 12 Mar

- ≈ 100 fatalities
- ≈ 500 people injured
- 26 000 people displaced (in Western Province)
- 544 368 people affected (in whole country)
- 270 442 people targeted for assistance
- ≈ 37 500 people in urgent need

Sources: DG ECHO, OCHA



### Earthquake Magnitude

- 6.0 – 7.0 M
- 7.0 – 8.0 M

### Modified Mercalli Scale (MMI) Combined Shakemap from

- 7.5 M (25 Feb), 6.7 M (06 Mar), 6.2 M (26 Feb)

- VIII (Severe)
- VII (Very Strong)
- VI (Strong)

- Moment Tensor

### GDACS Alert

- Potential Severe Disaster
- Potential Local Disaster

- Airport Damaged
- Other airport
- Landslide triggered by the EQ
- Bridge affected
- Pipeline Corridor
- Gas Plant
- Roads
- Province Boundary
- District Boundary
- Copernicus EMS Activation EMSR270 – Covered Area

### EUCPM RESPONSE

- On 2 March the UN Environment/OCHA Joint Unit activated the **EUCPM** requesting an environmental expert to support the UNDAC team deployed on site.
- Netherlands** offered an **expert in waste water management and water quality**.
- The EUCPM expert arrived on **8 March** to be integrated into UN Disaster Assessment and Coordination (UNDAC) team.
- DG ECHO is providing **€ 110 000** to support the Papua New Guinea Red Cross Society for distribution of **emergency shelter and essential relief items**.
- Copernicus EMS** was activated on 25 February to assess the damage in the affected areas. **13 satellite maps** have been produced as of 12 March.