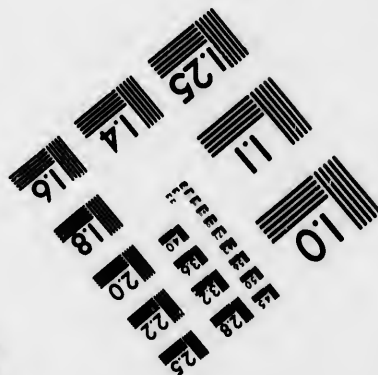
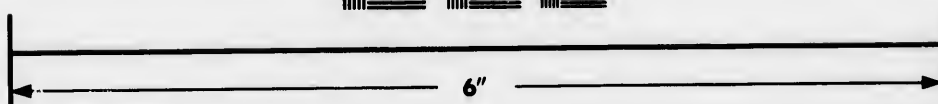
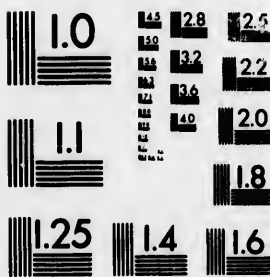


**IMAGE EVALUATION
TEST TARGET (MT-3)**



**Photographic
Sciences
Corporation**

23 WEST MAIN STREET
WEBSTER, N.Y. 14580
(716) 872-4503

Technical and Bibliographic Notes/Notes techniques et bibliographiques

The Institute has attempted to obtain the best original copy available for filming. Features of this copy which may be bibliographically unique, which may alter any of the images in the reproduction, or which may significantly change the usual method of filming, are checked below.

L'Institut a microfilmé le meilleur exemplaire qu'il lui a été possible de se procurer. Les détails de cet exemplaire qui sont peut-être uniques du point de vue bibliographique, qui peuvent modifier une image reproduite, ou qui peuvent exiger une modification dans la méthode normale de filmage sont indiqués ci-dessous.

- Coloured covers/
Couverture de couleur
- Covers damaged/
Couverture endommagée
- Covers restored and/or laminated/
Couverture restaurée et/ou pelliculée
- Cover title missing/
Le titre de couverture manque
- Coloured maps/
Cartes géographiques en couleur
- Coloured ink (i.e. other than blue or black)/
Encre de couleur (i.e. autre que bleue ou noire)
- Coloured plates and/or illustrations/
Planches et/ou illustrations en couleur
- Bound with other material/
Relié avec d'autres documents
- Tight binding may cause shadows or distortion along interior margin/
La reliure serrée peut causer de l'ombre ou de la distortion le long de la marge intérieure
- Blank leaves added during restoration may appear within the text. Whenever possible, these have been omitted from filming/
Il se peut que certaines pages blanches ajoutées lors d'une restauration apparaissent dans le texte, mais, lorsque cela était possible, ces pages n'ont pas été filmées.
- Additional comments:/
Commentaires supplémentaires:

- Coloured pages/
Pages de couleur
- Pages damaged/
Pages endommagées
- Pages restored and/or laminated/
Pages restaurées et/ou pelliculées
- Pages discoloured, stained or foxed/
Pages décolorées, tachetées ou piquées
- Pages detached/
Pages détachées
- Showthrough/
Transparence
- Quality of print varies/
Qualité inégale de l'impression
- Includes supplementary material/
Comprend du matériel supplémentaire
- Only edition available/
Seule édition disponible
- Pages wholly or partially obscured by errata slips, tissues, etc., have been refilmed to ensure the best possible image/
Les pages totalement ou partiellement obscurcies par un feuillet d'errata, une feuille, etc., ont été filmées à nouveau de façon à obtenir la meilleure image possible.

This item is filmed at the reduction ratio checked below/
Ce document est filmé au taux de réduction indiqué ci-dessous.

10X	12X	14X	16X	18X	20X	22X	24X	26X	28X	30X	32X
			✓								

The co
to the

The im
possibl
of the
filming

Origina
beginn
the last
sion, or
other o
first pa
sion, an
or illust

The las
shall co
TINUED
whiche

Maps,
differen
entirely
beginn
right an
require
method

The copy filmed here has been reproduced thanks to the generosity of:

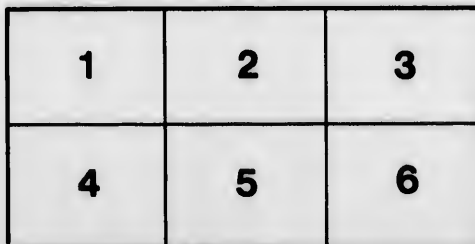
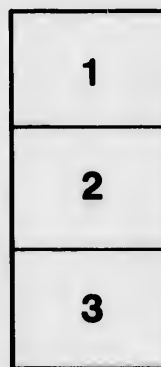
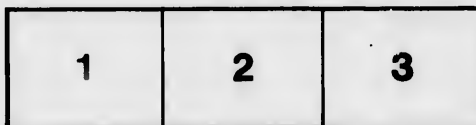
Library of the Public
Archives of Canada

The images appearing here are the best quality possible considering the condition and legibility of the original copy and in keeping with the filming contract specifications.

Original copies in printed paper covers are filmed beginning with the front cover and ending on the last page with a printed or illustrated impression, or the back cover when appropriate. All other original copies are filmed beginning on the first page with a printed or illustrated impression, and ending on the last page with a printed or illustrated impression.

The last recorded frame on each microfiche shell contain the symbol \rightarrow (meaning "CONTINUED"), or the symbol ∇ (meaning "END"), whichever applies.

Maps, plates, charts, etc., may be filmed at different reduction ratios. Those too large to be entirely included in one exposure are filmed beginning in the upper left hand corner, left to right and top to bottom, as many frames as required. The following diagrams illustrate the method:



L'exemplaire filmé fut reproduit grâce à la générosité de:

La bibliothèque des Archives
publiques du Canada

Les images suivantes ont été reproduites avec le plus grand soin, compte tenu de la condition et de la netteté de l'exemplaire filmé, et en conformité avec les conditions du contrat de filmage.

Les exemplaires originaux dont la couverture en papier est imprimée sont filmés en commençant par le premier plat et en terminant soit par la dernière page qui comporte une empreinte d'impression ou d'illustration, soit par le second plat, selon le cas. Tous les autres exemplaires originaux sont filmés en commençant par la première page qui comporte une empreinte d'impression ou d'illustration et en terminant par la dernière page qui comporte une telle empreinte.

Un des symboles suivants apparaîtra sur la dernière image de chaque microfiche, selon le cas: le symbole \rightarrow signifie "A SUIVRE", le symbole ∇ signifie "FIN".

Les cartes, planches, tableaux, etc., peuvent être filmés à des taux de réduction différents. Lorsque le document est trop grand pour être reproduit en un seul cliché, il est filmé à partir de l'angle supérieur gauche, de gauche à droite, et de haut en bas, en prenant le nombre d'images nécessaire. Les diagrammes suivants illustrent la méthode.

CASE

By

The
Cre

Pr

Ward's ALMANACK,

FOR THE YEAR OF OUR LORD

1823;

Being the Third after Bissextile or Leap Year

CALCULATED FOR THE MERIDIAN OF HALIFAX IN NOVA SCOTIA

It will serve for any part of the Province

AND CONTAINING AMONG OTHERS

A TIDE TABLE

By means of which the times of High Water at the principal ports in America and in the Bay of Fundy may be ascertained with accuracy.

ALSO

The rising and setting of the Sun—Length of Days and Days
create in hours and minutes—Equinox of June—Month's South
ing—Moon's Age and time of rising and setting—High Wa
ter at Halifax—Aspects, Holidays and Weather—Fami
ly Calendar and the Eclipses for the present

DESA

HALIFAX:

For Sale at the Free Press Office wholesale and retail
Price for per dozen, 12 dollars a Gross, and Seven
half penny single.

Directions for Halifax Harbour, taken from the printed Directions in Custom-House at Halifax.

SAMBRO island and light house is in latitude 44 deg. 30 min. N. longitude 63 deg. 32 min. W.

From the westward, bring the light to bear N. E. if it bears more easterly, stretch to the southward till it bears N. E. and as much more northerly as you please, there being no shoal or ledge to the southward; when it opens on your larboard bow; give it more than a mile and a half but much more as you please.

Note—The western ledges lie from the light S W distant two miles, other W S W about one league; the eastern ledges lie in a range not some above water; the outermost one mile and a half from the light being from it E. N. E.

When the light bears north distant about 2 miles, run N E 4 miles, north will carry you to Chedabucto Head at a proper distance clear of danger.

When a-breast of Chedabucto Head, run N. $\frac{1}{2}$ W for the south point of George's Island.

When within $\frac{1}{2}$ a mile of George's island you may enter the harbour of it in 18 fathoms, or east of it in 15.

In passing between Sandwich point and Meagher's beach run nearest point to shun a shoal which runs off S W from the beach.

There is also a shoal lying one mile south of Sandwich point.

Coming from the eastward, run for the light and you cannot fail see Chedabucto Head as you open Halifax Harbour; the light being 4 miles distant from the Head to the S W.

Signals made at Fort George when vessels are coming into harbour.

One ball close for one square rigged vessel.	A do under a ball for six do
One ball half hoisted for two do	A do over a do half hoisted for 7
Two balls close for three do	A do under 2 do close for 8 do
Two balls separated for four do	A do between 2 do separated for
A pendant of any colour for five do	A flag of any colour for 10 or more

[The above are hoisted at the east or west yard arm, according to the quarter the vessel first appears in, with the addition of a ball at the centre of yard until the vessel can be seen, when one or more of the following distinctive colours will be hoisted at the mast heads.

An Union for a Flag-Ship, with or without a Squadron	A blue Pendant for a Merchant Ship
Do with a Red Pendant over it; for a Two decker.	A red Pendant for a Merchant Ship
Do with a blue Pendant over it for a Frigate.	A white Pendant for a Topsail Ship or Sloop.
Do with a white Pendant over it for a small armed Vessel	A blue and white flag horizontally divided Neutral Fleet
A red flag pierced white for a Packet	White and blue Pendant Neutral Man of War
	Blue Flag Neutral Merchant Ship

ed, white and
ny's Fleet
red flag an Ene
Union Jack
ny's Signals V
rize.

de on the En
enter
red Flag from
red and white
red Pendant th
ope
white and red
Canary or We
blue Flag, We
blue Pendant
or Turk's Islan
blue and white
white Flag Ne

For a square ri
A ship—A large
A brig—a small
A lozenge in th
Do do half hois

MERCHANTS

J & M Tobin.
Geo Grassie &
Debbins & Mit
Henry Ford
Alexander M
Jesse Woodw
John Brown
Hartshorne,

William Stor
J W Morris
A Cunard &
Belcher & I
Wm Pryor
Collins & A
Peter Grant

ed, white and Blue Flag an Enemy's Fleet
 red flag an Enemy's merchantman
 Union Jack over Neutral or Enemy's Signals Vessel is detained or prize.

A white Flag over any Signal Vessel bears a Flag of Truce
 A Ball at the mast head—Vessel is on shore or in distress; should immediate aid be necessary guns to be fired.

EXPLANATION OF SIGNALS

done on the Ensign Staff at Fort George to denote the Port which Vessels entering the Harbour of Halifax have arrived from,

red Flag from Great Britain
 red and white do the Mediterranean
 red Pendant the Continent of Europe
 white and red Pendant, Madeira, Canary or Western Isles
 blue Flag, West Indies
 blue Pendant Bermudas Bahamas or Turk's Islands
 blue and white Flag United States
 white Flag Newfoundland

A red and white flag horizontally divided, Quebec or Gulf of St. Lawrence
 A blue and white flag, horizontally divided, New-Brunswick or Bay of Fundy
 A white and blue Pendant—Vessel has an English Mail on-board
 A white Pendant—Coasts of Nova-Scotia and Cape Breton.

Repeats from Out Ports at Fort George.

For a square rigged vessel—two balls of a size
 A ship—A large ball at the end of the yard, with a small ball in the centre
 A brig—a small ball at the end of the yard, with a large ball in the centre
 A luzege in the centre close up—a sloop or schooner
 Do do half hoisted—two or more schooners.

MERCHANTS' PRIVATE SIGNALS PORT OF HALIFAX.

J & M Tobin. A red flag crossed white **RED, &c.**
 Geo Grassie & Co. Do crossed white diagonally
 Deblon & Mitchell. A ditto centre a white square
 Henry Ford & Mitchell. A ditto centre a white square
 Alexander Mitchell. Do centre 2 blue balls in a white square
 Jesse Woodward A red Burgee,
 John Brown Do centre letter B
 Hartshorne, Boggs & Co. A chequered flag, red and white, red uppermost.
 William Storey A blue Petre **BLUE, &c.**
 J W Morris A blue Petre centre a blue ball
 A Cunard & Son blue flag centre a star
 Belcher & Binney Do crossed white
 Wm Pryor blue and white flag blue uppermost
 Collins & Allison A blue Burgee
 Peter Grant A blue do centre letter G

- John Clark A blue do crossed white diagonally
- T & L Piers A yellow flag centre a blue ball
- John William a yellow blue and yellow flag **GREEN, &c.**
- Law Doyle A green burgee centre a harp.
- John Starr Do centre a star **WHITE, &c.**
- John Fremain Do with blue cross
- J Lyons Red and white flag, white uppermost
- Wm Strachan White red and white do. white next do
- Fredek Major Do do do white uppermost
- Wm M'Herron A white-burgee with a blue fly
- W. K. Reynolds Ditto with a red cross

The above signals are worn at the main. Upon a vessel arriving in sight from the Light House so wearing her signal, a similar one is hoisted on the Telegraph Staff, or at the yard arm of the Signal Staff at Fort George, with a Pendant under it, descriptive of the class of vessel she belongs to.

PROVINCE OF NOVA-SCOTIA.

Lieutenant Governor and Commander in Chief of the Province of Nova Scotia, and its Dependencies, and Commander of the Forces in Nova Scotia, New Brunswick, Prince Edward Island, &c. &c. &c.—His Excellency Lieutenant-General Sir JAMES KEMPT, Knight Grand Cross of the Most Honorable Military Order of the Bath, &c. &c. &c.

HIS MAJESTY'S COUNCIL.

Honorable SAMPSON SALTER BLOWERS, President.

Hon. and Right Rev. Robert, Lord Bishop of Nova Scotia—Hon. Michael Wallace, Charles Hill, Richard J Uniacke, Charles Morris, James Stewart, Thomas N. Jeffery, John Black, Brenton Haliburton, Herbert N Binney, Enos Collins, Rupert D. George, Esq. Clerk William Hill, Esq. Deputy Clerk Mr. S. Greenwood, Messenger.

HOUSE OF ASSEMBLY.

S. B. Robie, Esq. Speaker.

COUNTY OF HALIFAX.—S. G. W. Archibald, William Lawson, and George Smith, Esqs. Thomas Ritchie and J. Campbell Esqs.—*County of Annapolis* Thomas Roach, and Richard Blair, Esqs.—*County of Cumberland* W. A. Chipman, and Samuel Bishop, Esqs.—*King's County* W. H. O Haliburton, and Wm. O'Brien, Esq.—*County of Hants* John Bingay, and — M. Kinnon, Esqs.—*County of Shelburne* Snow Parker and Joseph Freeman, Esqs.—*Queen's County* John Heckman, and

Lot Church, I
mas Dixon, B
nagh, Esqs.—
Esqs.—*Town*
son, Esq—*On*
son, Esq—*At*
—*Digby* Jan
liam Fraser,
Esq—*Newpo*
Yarmouth B
Edward Jame
lain, Rev. Joh
of the Gallery

Surveyor G
Treasurer of t
vince, Rupert

Chancellor,
Sampson Salte
Hon James Ste
Counsellors an
Cour

Advoca

Judge, Hu
General, Simo
trar, Hon-Chu
Mr Stephen
Court—Mess

Commission
George, Esq

Chief Just
Haliburton,
Hon Peleg
Simon B R
Haliburton,
Province, W

Lot Church, Esqs.—*County of Lunenburg* John G. Marshall, and Thomas Dixon, Esqs.—*County of Sydney* R. J. Uniacke, and Law Kavanagh, Esqs.—*County of Cape Breton* John Albro, and George Grassie, Esqs.—*Town of Halifax* Wm. Dickson, Esq.—*Truro* Robert Dickson, Esq.—*Onslow* James Fleming, Esq.—*Londonberry* John Robertson, Esq.—*Annapolis* T. Ruggles, Esq.—*Grandville* Wm. H. Roach, Esq.—*Digby* James Morse Esq.—*Amherst* S. Dennison, Esq.—*Horton* William Fraser, Esq.—*Windsor* Wm Young, Esq.—*Falmouth* H. Weir, Esq.—*Newport* J. J. Chipman, Esq.—*Shelburne* S. S. Poole, Esq.—*Yarmouth* B. Serjeant.—*Barrington* James R. Dewolf, Esq.—*Liverpool* Edward James, Esq.—*Lunenburg* Clerk, J. B. Franklin, Esq. Chaplain, Rev. John Inglis, D. D. Sergeant at Arms, Mr. John Boyd, Sergeant of the Gallery, Mr. Matthew Forrester; Messenger, Mr. John Gibbs.

Provincial Officers.

Surveyor General of Lands for the Province, Hon. Charles Morris. Treasurer of the Province, Hon. Michael Wallace. Secretary of the Province, Rupert D. George, Esq. Deputy Secretary, William Hill, Esq.

Court of Chancery.

Chancellor, His Excellency Sir JAMES KEMPT Master of the Rolls, Hon Sampson Salter Blowers Masters in Chancery, Hon Brenton Haliburton; Hon James Stewart, Peleg Wiswell, Esqr. Registrar, H H Cogswell, Esq Counsellors and Solicitors, The Attornies of the Supreme Court.

Courts of Error, and of Marriage and Divorce.

HIS MAJESTY'S COUNCIL

Advocates and Proctors, The Attornies of the Supreme Court

Court of Vice Admiralty.

Judge, Hon S S Blowers Advocate General, R J Uniacke Solicitor General, Simon B Robie, Esq Registrar, L Pennell, Esq Dep Registrar, Hon Charles Morris Marshal, James Putnam, Esq Dep Marshal, Mr Stephen Doblois Advocates and Proctors, The Attornies of the Sup. Court—Messenger, Mr S Greenwood

Court of Escheats and Forfeitures.

Commissioner, Honorable Michael Wallace—Registrar, Rupert D George, Esq

Court for the Probate of Wills,

And granting Letters of Administration.

Surrogate General, Honorable Charles Morris

Supreme Court.

Chief Justice, Hon Sampson S Blowers Puisne Judges, Hon Brenton Haliburton, Hon James Stewart, Hon Lewis M Wilkins Associate Judge Hon Peleg Wiswall Attorney General, Hon R J Uniacke Solicitor Gen Simon B Robie, Esq King's Counsel, S G W Archibald, Esq W H O Haliburton, Esq Clerk of the Crown and Prothonotary throughout the Province, William Thompson, Esq Deputy, J W Nutting Esq

**Barristers and Attornies at Law of the Supreme Court
residing in the Province.**

COUNTY OF HALIFAX.
Halifax—U H Cosswell, D S Clarke, S G W Archibald, John G Marshall, J J Chipman, R J Uniacke, Jr J W Notting, William Hill, C R Fairbanks, J W Johnson, W L Sawers, S P Fairbanks, William Bliss, G T Solomon, John Forman, Beunish Murdoch, Alexander Primrose, James Scot Tremain, Esquires
Pictou—N P Oding, Robert Hatton, Thomas Dickson, Jonathan Blanchard, Esquires
Truro—Jonathan Masters, James W. Chandler, Esquires
Annapolis—Thomas Ritchie, T C Haliburton, H Goldsmith, Esquires
Digby, Co. of Annapolis—G L Nichols, Baitey, Esqrs
Anherst, Co. of Cumberland—J S Morse, A F W Desbarres, Alexander Stewart, J B Buchanan, Charles D Roach Esquires
Horton, King's Co.—Nathaniel W White John Whidden Esquires
Windsor Co Hauts—W H O Haliburton William Fraser D D Stewart L M Wilkins Esquires
Shelburne Colio Campbell Esq. *Antigonish* John T Hill Esquire
Yarmouth John Lawson Jr Esqr. *Guy'sboro'* F W Desbarres Esquire
Liverpool William Sterns Esquire *Arichat* Delaney Esq
Lunenburg John Creighton Esqr. *Sydney* E Crawley Esq.

**Commissioners for taking Special Bail in the Country
On Actions depending in the Supreme Court.**

Annapolis William Winniett Esquire
Cumberland, Charles Baker & Thomas Rose Esq.
King's Co.—J I. Allison Esq *Cornwallis*—J Burbige Esq *Horton*—S Demison Esq *Hauts*—Patrick Wright Esq *Colchester*—J Fulton Esq
Pictou—W Patterson, Esq *Sydney*—Alexander M Donald Esq *Shelburne*—Colio Campbell Esq *Lunenburg*—F J Rudolf Esq

Clergy of the Established Church in Nova Scotia.

Honorable the Right Reverend ROBERT, Lord Bishop of Nova Scotia New Brunswick and their Dependencies.

Halifax—Rev John Inglis D D Ecclesiastical Commissary and Rector of St Paul's Rev J Thomas Twining Curate Rev Benjamin S Gray Missionary to Germans. *Sackville*—T Parsons
Newport—Rev C Porter D D. *Windsor*—Rev W C King *Falmouth* Rev W Cochran D D. *Prin of Academy* *Windsor*—Rev Mr Salt *Cornwallis*—Rev Robert Norris *Wilmot*—Rev A Gilpin *Aylesford*—Rev E. Gilpin *Granville*—Rev G Best *Annapolis*—Rev J Mittedge *Digby*—Rev R Viets *Yarmouth*—Rev A Grantham *Shelburne*—Rev T Rowland *Lunenburg*—Rev Roger Aitken *Liverpool*—Rev W Twining *Chester*—Rev J Shreve *Manchester*—Rev C Weeks. *Sydney, C B.*—Rev H Bunney, Rev J Burneyeat Visiting Missionary *Parsborough* *Amkerst* *Rawdon*

Cler
St Matthen
 Knox Assistat

Ministe
Halifax H
 Rev M Laidla
 loch D D
Cumberland—
 Rev Mr

Halifax—R
 William Tem
 B. Strong ; C
 sny ; Ramshe
 Sampson Bus
 William Benn
 Orth ; Yarm

John Burto
 Dimock, Jern
 Dimuck, Rob
 William Elder
 Towner, Har

Patr

His Excell
 ship of Nova
 of Vice Admir
 Attorney Gen
 The Reverend
 Ecclesiastical

President
 Cochran, D I
 Acting Profe
 Cochran D I
 Professor of C
 Steward Mr.

ACADEM

Clergy of the Established Church of Scotland.

St Matthews Halifax Rev Archibald Gray D D Minister. Rev Robert Knox Assistant

Halifax—Rev M Martin Minister

Ministers of Dissenting Presbyterians in Nova Scotia.

Halifax Rev M Robson *Sewiack*—Rev M Blackwood *Musquodobit*
Rev M Laidlaw *Zyuro*—Rev M Waddell *Pictou*—Rev Thomas McCulloch D D
Rev James McGregor D D *Antigonish*—Rev M Trotter
Cumberland—Rev M Wilson *Windsor*—Rev M Sprutt *Landderry*—
Rev Mr

Methodist Ministers.

Halifax—Robert Lusher, William Black, Superintendent *Liverpool*—
William Temple *Shelburne and Berington*—John Pope *Annapolis*—John
B. Strong; *Cumberland and Pictou*—James Priestly; Albert Desbri-
say; *Ramsay*; Mathew Richey; *Windsor*; George Jackson; *Horton*.
Sampson Busby; *Parrsborough*; Robert H. Crane; *Newport*. Wm. Burt;
William Bennett, Supernumerary; *Lunenburg and Petit Riviere*, George
Orth; *Yarmouth*.

Baptist Ministers.

John Burton, David Harris, Thomas Ansley, Edward Manning, George
Dimock, James Munro, Samuel M'Cullay, Thomas H Chipman, Joseph
Dimock, Robert Harris, Peter Crandall, Charles Tupper, David Nutter,
William Elder, George Richardson, Joseph Henderson, John Craig, Enoch
Towner, Harris Harding, Theodore Seth Harding.

Colleges, established in the Province,

KING'S COLLEGE, WINDSOR

Patron His Grace the Lord Archbishop of Canterbury.

GOVERNORS :

His Excellency the Lieutenant Governor The Right Rev the Lord Bi-
shop of Nova Scotia The Hon the Chief Justice The Judge of the Court
of Vice Admiralty The Speaker of the House of Assembly The Hon the
Attorney General The Solicitor General The Secretary of the Province
The Reverend the President The Rev the Vice President The Rev the
Ecclesiastical Commissary of the Diocese

Visitor—The Lord Bishop of Nova Scotia

President Rev Charles Porter D D Vice President Rev William
Cochran, D D Professor of Divinity and Hebrew Rev Charles Porter D D
Acting Professor of the Moral Sciences and Metaphysics The Rev Wm
Cochran D D Acting Professor of Mathematics The Rev C Porter D D
Professor of Grammar Rhetoric and Logic The Rev W Cochran D D
Steward Mr Roberts

ACADEMY under the direction of the Governors of King's College,
Principal Rev Mr Salt

Dalhousie College, Halifax.

Patron His Majesty **THE KING**

GOVERNORS

The Right Hon **GEORGE** Earl of Dalhousie His Excellency Sir James Keppel K C B Hon and Right Rev Robert Lord Bishop of Nova Scotia Hon Sampson Salter Blowers, Hon Michael Wallace Simon Bradstreet Robie Esq and The President

Professors of Greek and Latin Classics
Professors of Mathematics, Natural and Experimental Philosophy } Are not yet filled up.

Pictou Academy.

Governed by twelve Trustees who are to profess either the Presbyterian system of Religion or that of the Church of England.

Trustees, S. B. Robie, Esq L D S G Archibald, Esq L D Duncan Ross, Thomas M Culloch, Thomas Davison, George Smith, Ro Lowden, William Patrick, James M Gregor, Archibald Gray, D D James Roman, and James Robson. Head Master, Reverend Thomas M Culloch, D D Assistant, Rev Jas M Gregor, D D

National School, Halifax.

Master, Mr Abel Gore

Acadian School, Halifax.

Master, Walter Bromley Esquire

Justices of the Peace throughout the Province.

Right Reverend Robert, Lord Bishop of Nova Scotia. Hon Sampson S Blowers, Michael Wallace, Charles Hill, R J Uniacke, Charles Morris, James Stewart, T. N. Jeffery, John Black, Brenton Haliburton, Hibbert N. Binney, Euos Collins, S B Robie, Esq Speaker of the House of Assembly.

Memo. The sittings of Courts, names of Officers, &c. will be found arranged under the respective Counties to which they belong.

COUNTY OF HALIFAX.

TOWN AND DISTRICT OF HALIFAX.

High Sheriff of the County J J Chipman, Esq

Supreme Court sits at Halifax,

On the 2d Tuesday of January, 1st Tuesday of April, 2d Tuesday of July, and 2d Tuesday of October.

Inferior Court,

On the 2d Tuesday of March, June, September and December.

Judges, Hon Michael Wallace, Hon James Fraser, James Foreman, and John Howe, Esq D S Clark, Esq Clerk

Commissioner
liam Muus,

Op
Justices Jo
D S Clarke

Sits on th
Ju

John G P
Creighton Jo
Grassie Rufi
main Henry
Samuel Albro
Andrew M Car
Esqs D S Cl

Hon R J Unia

John Dougl
Scott R N

Cor
Hon. R. I. Un
Stayner James
Archibald Gray

James Forman

Deputy

Hon. H. N.
Andrew Ric
John Rule,
Robert Ho
Donald Gra
Wm Cleave
Edward Du

Commissioner's Court,

Meets in February May August and November

Commissioners James Forman, James Tobin, Richard Tremain, William Minus, and Charles Boggs, Esqs. Clerk, D S Clarke Esq

Police Office,

Open every day throughout the year except Holidays

Justices John G Pyke John Liddell and John Howe sen esq Clerk
D S Clarke

Sessions of the Peace,

Sits on the 1st Tuesday of March June September and December

Justices of the Peace of and for the County

Residing in the District of Halifax

John G Pyke Custos Rotulorum Theophilus Chamberlain James Creighton Jonathan Tremain James Forman John Howe Sen George Grassie Rufus Fairbanks Samuel Head John Liddell Richard Tremain Henry Yeomans Peter M Nab J M Green William Lawson Samuel Albro Samuel Cunard John Starr John Albro Michael Tobin Andrew M-Cara Temple F Piers M Richardson and John D Hawthorn Esqs D S Clark Esq C P

Commissioners of the Revenue,

Hon R J Uniacke Hon M Wallace Simon B Robie and Wm Lawson Esqs William Newton Clerk

Commissioners for Light Houses,

John Douglas Esq Master Attendant Samuel Cunard Esq and Captain Scott R N

Commissioners for visiting the Poor House,

Hon. R. I. Uniacke, J. G. Pyke, Esq. Hon Charles Morris, Mr. John Stayner James Forman, Esq. Hon. T. N. Jeffrey, R. Tremain Esq. Rev. Archibald Gray, D. D ; Henry Yeomans, Esq. and Hon. Charles Hill.

Commissioners of the Streets, &c.

James Forman John Albro Michael Tobin Frederick Major and S. Cunard Esquires.

Deputy Register of Deeds, &c. G T Solomon Esqre.

Officers of the Provincial Revenue.

Hon. H. N. Binney, Collector of Impost and Excise.

Andrew Richardson, Gunger and Weigher.

John Role, Shipping Officer.

Robert Hodges, Land Waiter.

Donald Grant, James Barret, Waiters.

Wm. Cleaveland, Collector of License Duty.

Edward Duckett, Collector of Light Duty

Officers of His Majesty's Customs.

Hon. T. N. Jeffery, Collector.
John Wallace, Esq. Comptroller.
J. Purvis, J. Hood, Weighers and Searchers.
Robert Dimmet, Richard B. Young, Tide Surveyors.
W. M. Sweeney, Earl Boyd, Tidesmen.

Officers of His Majesty's Naval Yard.

A. F. Jones, Esq. Master Shipwright. Mr. James Ritchie, Clerk
Mr. Matthews, Gate Porter.

Coroner of the County—Mr Samuel Greenwood

COUNTY OF HALIFAX.

Districts of Colchester and Pictou.

Supreme Court sits at Pictou on the last Tuesday of May, and third Tuesday of September.

At Truro, on the 1st Tuesday of June, and 4th Tuesday of Sept.

Inferior Court.

Sits at Pictou, 1st Tuesday of February, and 4th Tuesday of July.
Judges, Hugh Denoon, A. M'Donald, George Smith, Robert Lowden,
and M. Card, Esqs. Mr. Walter Patterson, Deputy Prothonotary.

At Truro, on the 1st Tuesday of January, and the 1st Tuesday of July.
Judges, John Fulton, James Archibald, and J. M'Curdy Esqrs.
Mr. George Dill, Deputy Prothonotary.

Sessions of the Peace.

Sits at Truro and Pictou at the same time with the Inferior Court
Justices of the Peace,

Of and for the County residing in the Districts of Colchester & Pictou
James Fulton, Hugh Denoon, John Stewart, James Archibald, Robert
Lowden, Samuel Tupper, Wm. Cutting, Joshua Marsh, John Dickson,
William M'Kay, George Roy, Mathew Archibald, Wentworth Taylor,
John Allen, James Skinner, Robert Dickson, James M'Curdy, James
Kent, George Smith, James Benvie, Adam Archibald, John Fraser,
Nathaniel Masters, Thomas J. Brown, James Flemming, J. Mahon,
W. Currie, W. Mattheson, D. M'Lean, R. M'Kay, and Th. Holland.

Surrogate Judges of the Court for the Probate of Wills

District of Colchester, S. G. W. Archibald, Esq. District of Pictou,
George Smith, Esq.

District of

Collector of
Excise and Pr
Colchester,

District

District
Robert Pat
Flemming, S

Sits at A
of Septemb
At Digby
ber. Judge
Milledge, an

J. Jones,
Wm. Winni
dolf, P. Lov
V. Bayard,
Hankinson;
Quequay, J
Bonnell, C.
Bent, Pardo
Cutler, Esq
Surrogate

William W
John R. Lov
Collector
Excise, T.

Registrars of Deeds; &c.

District of Colchester, Wm. Dickson, Esq. District of Pictou, Geo. Smith, Esquire

District of Pictou.

Collector of Light Duties, R. Corbett. Collector of Impost and Excise and Pro Collector, Hugh Denoon, Esq. Ditto for District of Colchester, Robert Dixon, Esq.

Deputy Sheriffs.

District of Colchester, Mr. Blair. District of Pictou, Mr. Harris

Commissioners of Land Board.

District of Pictou—George Smith, Robert Lowden, John Skinner, Robert Patterson. District of Colchester—Robert Dickson, James Fleming, Sam Tupper, Edw. Blanchard.

COUNTY OF ANNAPOLIS.

High Sheriff for the County, William Winniet, Esq.
Supreme Court.

Sits at Annapolis, on the 24 Tuesday of June, and the 2d Tuesday of September.

At Dighy, on the 1st Tuesday of July, and 3d Tuesday of December. Judges, Josiah Jones, E. Morton, Andrew Snodgrass, Rev. John Milledge, and John Warwick, Esqrs.

Sessions of the Peace.

At the same time with the Inferior Court.

Justices of the Peace.

J. Jones, Custos Rotulorum. Andrew Snodgrass, Edward Thorn, Wm. Winniet, Simon Jones, Stephen Jones, Moses Shaw, R. T. Randolph, P. Lovell, sen. Benjamin Dodge, John Roggles, E. Morton, S. V. Bayard, John Whitman, Phineas Lovett, John Morehouse, Rubin Hankinson, John M. Segoyne, W. Jones, Thomas Ritchie, Joseph Quequay, J. B. Hughes, John Wiswall, Jun. Elias Wheelock, W. F. Bonnell, C. Jones, John Reed, Charles Jones, J. F. Randolph, W. Bent, Pardon Sander, Wm. Delancy, Samuel Campbell, and Ebenezer Cutler, Esqs. C. P.

Surrogate Judge of the County for the Probate of Wills, &c.

William Winnett, Esq.

Registrar of Deeds.

William Winnett, Esq., Coroners—Silvanus Snow, Wm. Young, and John R. Lovett, Esqrs.

Collector of Light Duty, W. Winnett, Esq. Collector of Impost and Excise, T. Ritchie, Esq., Pro Collector, H. Goldsmith, Esq.

Commissioners of Land Board.

Eastern District—Thomas Ritchie, Henry Goldsmith, D. J. Ditman's
Western District—Cereus U. Jones, Charles M'Carthy, Samuel Campbell, Esquires

COUNTY OF CUMBERLAND.

High Sheriff for the County, Charles H. Chandler, Esq.

Supreme Court,

Sits at River Philip on the 2d Tuesday of June.

Inferior Court,

Sits at Amherst, on the last Tuesday of April, and 2d Tuesday of November. Judges, Charles Baker, Henry Purdy, Thomas Roach and Richard Blair, Esquires. Mr. Silas Morse, Dep. Prothonotary.

Sessions of the Peace,

Sits at Amherst, the same time with the Inferior Court.

Justices of the Peace.

Charles Baker, Esq. Custos Rotulorum. Henry Purdy, Gilbert Purdy, Edward Baker, Thomas Roach, C. H. Chandler, Gabriel Purdy, D. M'Farlane, William Baker, John Black, William White, Richard Blair, Gains Lewis, John Morse, George Bergman, James M'Nab, Thomas Cooke, and Stephen Oxley, Esqs. J. S. Morse, Esq.

Surrogate Judge of the Court for the Probate of Wills.

Charles Baker, Esquire Registrar of Deeds, &c. Charles Baker, Esq. Collector of Impost and Excise. Thomas Chapman, Pro Collector, Michael Gordon.

Commissioners of Land Board.

Richard Blair, Thomas Roach, James S. Morse, Thomas Cooke, Esqs.

COUNTY OF KING'S.

High Sheriff for the County, George Chipman, Esq.

Supreme Court

Held at Horton on the 1st Tuesday of June, and the 3d Tuesday of September.

Inferior Court

Sits at Horton on the 3d Tuesday of May, and 2d Tuesday of October.—Judges, John Chipman E, Dewolf Wm. Campbell E: Whidden and C Prescott, Esqrs. Dep. Prothy. Mr. Samuel L Allison.

Sessions of the Peace

Held at the same time with the Inferior Court.

John Chipman
David Whidden
Ratchford, J
Samuel B
Daniel Loc
m Chipman,

H. V. Buskin
Coron
Surrogate J

Collector of I
For Horton-

Hig
Sits at Wind

Sits at Winds
of July.—Jud
Rev. W Coch

John M'M
Richard Cun
Thomas Wm
John Smith W
Moxon J Wit

W H. O. F
and Richard S
Wills—Wm.
Deputy R
Impost. and
N. R. Thom

Justices of the Peace.

John Chipman Custos Rotulorum, Elisha Dewolf, Wm. Campbell, David Whidden, Stephen Harrington, James Kerr, Wm. A. Chipman, Ratchford, J N Shannon, Daniel Dewolf, Simon Fitch, James Har- o, Samuel Bishop, J Wells, Alexr Walker, S Dennison, James Allin- on Daniel Lockhart, J Fullerton J Lewis J D Harris W Chipman, jr. m Chipman, C P.

Commissioners of Land Board;

H. V. Buskirk, David Whidden, George Chipman, John Johnson, Esqs
Coroners—W. S. Morse, D. Dewolfe, John Allison, Esqs.

Surrogate Judge of the Court for the Probate of Wills &c.

William Campbell, Esq

Deputy Registrar of Deeds, &c.

William Campbell, Esq.

Collector of Impost and Excise—D. Whidden, Esq. Pro Collectors.
For Horton—E Dewolf, Esq. For Cornwallis—D Whidden Esq.

COUNTY OF HANTS.

High Sheriff for the County, Hugh Jenkins, Esq.

Supreme Court.

Sits at Windsor on the last Tuesday of May, and the 4th Tuesday of September.

Inferior Court.

Sits at Windsor on the 1st Tuesday of January, and the 1st Tuesday of July.—Judges, J McMonagle N Thomas R Cunningham, Esqs, Rev. W Cochran, D D. Dep. Prothy. Patrick Wright Esq,

Sessions of the Peace.

Held at the same time with the Inferior Court.

Justices of the Peace.

John McMonagle Custos Rotulorum, Cons Church John Emerson Richard Cunningham John Clarke Wm Smith Shubael Dimock N R Thomas Wm Salter J Walker Caleb Smith W H Shey James Whidden John Smith Wm Wier A Scott John Parker Benjamin Dewolf, James Moxon J Withrow John Garby John Dimock John Elder Esquires

Commissioners of Land Board.

W H O Haliburton, Joseph Sentell, Benjamin Dewolfe, Wm. H. Shey, and Richard Smith, Esqs. **Surrogate Judge of the Court for Probate of Wills—Wm. Fraser, Coroner.**

Deputy Registrar of Deeds.—N R Thomas, Esq.—Collector of Impost and Excise, N R Thomas, Esq.—Pro Collectors, Windsor N R Thomas, Esq.—Deputies, R Dickson, Esq.—Surrogate Judge W Fraser, Esq.

COUNTY OF SHELBURNE.

High Sheriff for the County, John Bingay, Esq;

Supreme Court

Held at Shelburne on the 2d Tuesday of July:

Inferior Court:

Sits at Shelburne on the 1st Tuesday of April, and 1st Tuesday of October. Judges, G White J Sargeant J V Buskirk and R Crowe Esqrs. Dep. Prothy. A Cunningham.

For the District of Yarmouth,

Sits at Tuskent Village on the 1st Tuesday of March, and at Yarmouth on the last Tuesday of October. Judges, S S Poole J Lent J N Bond B Detrimont and H J Farish Esqrs. Dep. Prothy. — M Huntington.

Sessions of the Peace.

Held at the same time with the Inferior Court.

Justices of the Peace.

Gideon White, Constos Rotulorum, John Sargeant, Samuel S Poole B Bernard, B Dentriment, Colin Campbell, Jacob V Buskirk, James Dore, J N Bond, James Lent, Ebenezer Crowell, H G Farish, Thos Crowell, John Bingay Gabriel V Norden, Anthony Landres, J Kell Benj Bingay, Esqrs — A Cunningham, C P.

Commissioners of Land Board,

Eastern District—Colin Campbell, Jacob Van Buskirk, John Bingay and B. Sarjeant. Western District, Samuel S. Poole, H. G. Farish, John McKinnon, and Jacob Van Norden, Esqs; Coroner, John Bingay.

Surrogate Judge of the Court for the Probate of Wills—*District of Argyle*, Colin Campbell, Esq *Dist of Yarmouth*, S S Pool, Esq

Dep Registrar of Deeds—Colin Campbell, Esq *Collectors of Impos and Excise*, — *Yarmouth* J R Bond *Shelburne* J V Buskirk *Weymouth* R Hankinson *Pro Collectors*—*Shelburne* A S Bruce Esq *Yarmouth* J N Bond Esq *Weymouth* R Hankinson Esq *Bar* vington Joseph Horner

COUNTY OF QUEEN'S.

High Sheriff for the County, Nathan Tupper, Esq;

Supreme Court

Held at Liverpool on the 1st Tuesday of July.

Inferior Court

Sits at Liverpool on the 2d Tuesday of April, and 2d Tuesday of November. Judges, Joshua Newton, P. Doran, Joseph Freeman, and Snow Freeman, Esqrs, Dep. Prothy. James Rogers.

Joshua Ne
Nathau Tupper
min Knaut, R
Dewolf, S L

G Fulman,
Surrogate

Collector
— Jos, N

High

Sits at Lame
tober. Judg
Dep. Proth.

F J Rudol
Crichton,
Walker, Joh
Miller, Wm

Francis
Garret Mill
Surrogate

Collector
— Mr John

Sessions of the Peace
Held at the same with the Inferior Court:
Justices of the Peace.

Joshua Newton, Custos Rotulorum, Joseph Barss, John Thomas
Nathan Tupper, Isaac Dexter, Joseph Freeman, Snow Parker, Benjamin
Knaut, Robert Barry, Jas Gorham, J R Dewolf, John Barss, Jas
Dewolf, S L Perkins, Esqrs.

Commissioners of Land Board.

F G Fulman, Benjamin Knaut, Nathan Tupper, James Gorham, Esqrs
Surrogate Judge of the Court for the Probate of Wills, &c:
Joshua Newton, Esq
Collector of Impost and Excise.—Jos, Newton, Esq. Pro Collec-
tor—Jos, Newton, Esq.

COUNTY OF LUNENBURG.

High Sheriff for the County, Henry Kaulback Esq:

Supreme Court

Held at Lunenburg on the last Tuesday of June.

Inferior Court

Sits at Lunenburg on the 2d Tuesday of April; and 2d Tuesday of Octo-
ber. Judges, F J Rudolf, John Creighton, and J Pernette Esqrs,
Dep. Pruth. H S Stafford.

Sessions of the Peace

Held at the same time with the Inferior Court.

Justices of the Peace.

F J Rudolf, Custos Rotulorum, F J Etter, Edward James, John
Creighton, Thomas Thomson, John Pernet, D W Crowdie, James
Walker, John C Rudolf, John Evans, Ed Enright, W Ross, Garret
Miller, Wm Alexander, John Heckman, Esqrs.—F C Rudolf, C P.

Commissioners of Land Board.

Francis J Rudolf, John Pernette, D M Crandle, John Heckman
Garret Miller:

Surrogate Judge of the Court for the Probate of Wills, &c.

J Pernette, Esq.

Deputy Registrar of Deeds, &c.

F J Rudolf, Esq.

Collector of Impost and Excise—Mr John Owen, Pro Collector
—Mr John Owen.

COUNTY OF SIDNEY.

High Sheriff for the County, David McQueen, Esq;

Supreme Court

Held at Dorchester on the 2d Tuesday of September.

Inferior Court

Sits at Dorchester on the 1st Tuesday of May and at Guysborough on the 2d Tuesday of November. Judges, Thos Cutler, T W Hierlihy, Joseph Marshall, John Cunningham and John Hendriken, Esquires. Dep. Prothy. Alex McDonald.

Sessions of the Peace

Held at the same time with the Inferior Court.

Justices of the Peace.

Thomas Cutler Custos Rotulorum Joseph Marshall, T W Hierlihy Richard Cunningham, Wm Atwater Christ. Muller. Robert Mulleson Cutler, Joseph H Marshall Wentworth Taylor, Patrick Lanigan, Jas Hendriken Alex McDonald J McDonald C Archibald Robert Murray D Archibald W. McKien T. Glenross D: Campbell and A McDonald Esqrs

Commissioners of Land Board.

Lower District—Robert Cutler, Joseph Marshal, Robert Hartshorne, and John Newton. Upper District—Rev. T. Trotter, T. W Hierlihy, John Cunningham, John McDonald, and Robert Henry Esqs

Coroner—Peter Frost.

Surrogate Judge of the Court for the Probate of Wills, &c,

Thomas Cutler, Esq.

Deputy Registrar of Deeds, &c.

Thos Cutler, and John Cunningham, Esqrs,

COUNTY OF CAPE BRETON.

High Sheriff for the County, C. R. Ward, Esq;

Supreme Court

Held at Sydney on the 1st Tuesday of August and at Arichat on the 1st Tuesday of September.

Inferior Court

Sits at Sydney on the 2d Tuesday of January, and the 2d Tuesday of July and at Arichat on the 2d Tuesday of February and the 2d Tuesday of August.

Judges of Inferior Court.

Thomas Crawley, Lawr. Kavanagh, John Leaver, Clement Hubert, and Frederick B Topper, Esquires Surveyor General of Lands—Thomas Crawley. Collector of Impost and Excise—Charles B. Leonard.

Surrogate Ju
of Deeds, N
Turnbull Esq

Archd. Dode
Leaver, Cha
Kavanagh, J
Cameron, G
Dumersque
Augus Grant
William Ban
Dafius; and

Acti
Collector

Ch

Tho

EX

LEFT HAN
the days of t
the length o
and decreas
slower the S
fast. Seventh
the Moon's
venth, high
RIGHT HA
the week.
Calendar.

Dominical
Golden Nu
Epact

Surrogate Judge for the Probate of Wills—Thomas Crawley. Dep. Regr. of Deeds, North District—Charles R. Ward. South District—James Turnbull Esquires

Sessions of the Peace

Held at the same time with the Inferior Court.

Justices of the Peace,

Archd. Dodd, Thos. Crawley, Richd. Gibbons, Clement Hubert, John Leaver, Charles E. Leonard, Rowd. McKinnon, Peter H. Clarke, Lawr. Kavanagh, John Jones, Chs. McNabb, John Campbell, James Dodd, John Cameron, Geo. Lynett, Ferd. B. Tupper, John B. Giles, David Taitt, P. Dumeresque, John Wiggins, John Leaver, Charles Leaver, H. Ingraham Augus Grant, Samuel Plant, George Cosset, Whit Gannett, Win. Watts, William Bannerman James Ball; George Brown, Andrew Madden, James Daffus; and Theophilus Greenwood Esquires

Acting Collector and Comptroller—John Warde-Beau.

Collector of Impost and Excise,—

Collectors of Excise and Light Duty.

Charles C. Leonard. Arischat. James Turnbull Esquires

Superintendent of King's Mines,

Thomas Crawley, Esq. Coroner—John Smith, Esq.

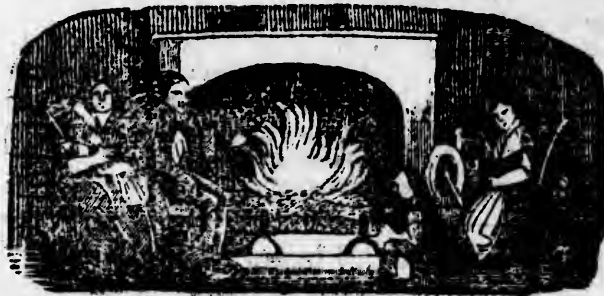
EXPLANATION OF THE CALANDER PAGES.

LEFT HAND PAGE.—*First column* shows the days of the month. *Second*, the days of the week. *Third*, the rising and setting of the Sun. *Fourth*, the length of the days in hours and minutes. *Fifth*, the days' increase and decrease in hours and minutes. *Sixth*, shows how much faster or slower the Sun is than the real time, in minutes. S Sun slow; F. Sun too fast. *Seventh*, the Moon's southing. *Eighth*, the Moon's age in days. *Ninth*, the Moon's rising or setting. *Tenth*, the Moon's place in the signs. *Eleventh*, high water at Halifax.

RIGHT HAND PAGE — *First column*, days of the month. *Second*, days of the week. *Third*, Aspects, Holidays, and Weather. *Fourth*, the Farmer's Calender.

Chronological Cycles, for 1823.

Dominical Letter	E.	Solar Cycle	12
Golden Number	19	Roman Indiction	11
Epact	18	Julian Period	6,536



ant.

g.

	Full
	SEA.
y.	10 59
y	11 44
s	0 28
s	1 12
ts	1 55
ts	2 39
ts	3 26
hs	4 14
hs	5 3
es	5 54
es	6 44
s	7 32
s	8 19
	9 4
	9 47
	10 29
	11 12
	11 56
	0 43
	1 35
	2 31
	3 31
	4 35
	5 40
	6 42
	7 41
	8 0
	8 34
	9 24
	10 10
	10 56

D D Aspects, Holidays,
M W Weather, &c.

FARMER'S CALENDAR.

1	4	Circumcision
2	5	♄ sup. ☉ ⊕
3	6	Low tides.
4	7	h stat. clouds are
5	E	2d S. aft. Christm
6	2	Epiphany muster-
7	3	C C P Bangor ing
8	4	Lucian ♀ ♂ ☽ for
9	5	♃ ap. a snow storm
10	6	Linnae. died 1778
11	7	Mid. tid.
12	E	1st S af Ep ☉ eel
13	2	♂ ♂ ☽ (in ♀ and ♂
14	3	☉ ☽
15	4	[Howard di. 1790
16	5	Clear
17	6	Dr Frank born 1796
18	7	Prisca and cold
19	E	2d S af Ep L tid
20	2	Fabian ☉ ent ☼
21	3	4 stat O's de 20°
22	4	Vinc ♂ ♂ ☽ [S
23	5	Signs of a Thaw
24	6	h ☐ O [ser.
25	7	Conv St Paul ☽
26	E	Septua sun ☽ ec
27	2	Quite hi tid [in v
28	3	Sir F Drake died
29	4	Geo 3d died [1595
30	5	1820, aged 81.
31	6	

The Editor having undertaken the publication of this Almanack at a very advanced period, in consequence of the sudden death of the enterprising and public spirited gentleman who had hitherto published it; is well aware that much has been omitted which might have been inserted had more time been allowed. He trusts however that his bantling will experience that indulgent consideration, which all in infancy require.—Obtaining that he will feel content, and be prompted to make such exertions as will render his future productions more useful and interesting.

Speaking of infancy furnishes him with a moral; and he will use it for the edification of those who are in the highday and morn of life. He will tell them, that that morn is most invaluable, and that its hours if wasted or mispent, will entail almost invariably, remorse and suffering upon such as have misapplied them; and that consequently they should avail themselves of every opportunity to cultivate their minds; they should form temperate, virtuous and industrious habits; and endeavour to secure a retreat for the evening of their days; when, no longer able to engage in the busy pursuits of active life, they may have no resource remaining except that which is to be derived from the contemplation of a life well spent.

FEBRUARY hath XXVIII Days.

Vice is universally the bane of happiness.
 It is much easier to debase others, than to raise ourselves.
 Dreams, like notorious liars, are generally false.
 The most effectual antidote against sorrow, is employment
 Those who give nobody a good word, deserve any body's good word.
 What is fixed in our hearts is seldom out of our heads.
 Only the good and wise can be friends; others are but companions.
 Idleness has many friends, but no advocates.
 Hasty resolutions are seldom fortunate.

Last Quarter, 2d Day, 6 hours 24 m. Evening.
 New Moon, 10th Day, 10 hours 53 m. Evening.
 First Quarter, 18th Day, 6 hours 50 m. Morning.
 Full Moon, 25th Day, 1 hour 56 m. Morning.

D	D	R	☉	s	Days' length	Day's Incr.	☺	☻	☼	☽	☾	☿	♋	♌	♍	♎	Full SEA.		
M	W						S	Southg	Age	riser.		Ph.							
1	Sa	7	12	5	9	36	0	56	14	4	26	20	MORN.		reins	11	40		
2	S	7	11	5	9	38	0	58	14	5	12	☾	0	4	secrets	0	26		
3	M	7	9	5	9	42	1	2	14	5	58	22	1	9	secrets	1	12		
4	Tu	7	8	5	9	44	1	4	14	6	47	23	2	13	thighs	2	0		
5	W	7	7	5	9	46	1	6	14	7	36	24	3	13	thighs	2	50		
6	Th	7	5	5	9	50	1	10	14	8	27	25	4	7	thighs	3	41		
7	Fr	7	4	5	9	52	1	12	14	9	17	26	4	53	knees	4	31		
8	Sa	7	2	5	9	56	1	16	15	10	7	27	5	32	knees	5	21		
9	S	7	1	5	9	58	1	18	15	10	55	28	6	4	legs	6	9		
10	M	7	0	5	10	0	1	20	15	11	41	☺	SETS		legs	6	55		
11	Tu	6	58	6	10	4	1	24	15	11	26	EVEN	26	1	5	46	legs	7	40
12	W	6	57	6	10	6	1	26	15	1	9	2	6	52	feet	8	23		
13	Th	6	55	6	10	10	1	30	15	1	53	3	8	2	feet	9	7		
14	Fr	6	54	6	10	12	1	32	15	2	37	4	9	11	head	9	51		
15	Sa	6	52	6	10	16	1	36	14	3	24	5	10	24	head	10	33		
16	S	6	51	6	10	18	1	38	14	4	14	6	11	39	neck	11	28		
17	M	6	49	6	10	22	1	42	14	5	8	7	MORN.		neck	0	22		
18	Tu	6	48	6	10	24	1	44	14	6	6	☽	0	55	arms	1	20		
19	W	6	46	6	10	28	1	48	14	7	7	9	2	8	arms	2	21		
20	Th	6	45	6	10	30	1	50	14	8	10	10	3	18	breast	3	24		
21	Fr	6	44	6	10	32	1	52	14	9	11	11	4	10	breast	4	25		
22	Sa	6	42	6	10	36	1	56	14	10	10	12	4	55	heart	5	24		
23	S	6	41	6	10	38	1	58	14	11	5	13	5	31	heart	6	19		
24	M	6	39	6	10	42	2	2	14	11	56	14	6	0	heart	7	10		
25	Tu	6	37	6	10	46	2	6	13	MORN		O	RISES		belly	7	59		
26	W	6	35	6	10	50	2	10	13	0	45	16	7	23	☼	8	0		
27	Th	6	33	6	10	54	2	14	13	1	32	17	8	35	reins	8	46		
28	Fr	6	32	6	10	58	2	16	13	2	18	18	9	45	reins	9	32		

1	7	
2	E	Sex
3	2	M
4	3	♀ ♀
5	4	Ag
6	5	O a
7	6	
8	7	
9	E	Qui
10	2	● e
11	3	Shr
12	4	Ash
13	5	Mid
14	6	Cap
15	7	
16	E	1st s
17	2	☼
18	3	☼
19	4	⊕ e
20	5	
21	6	
22	7	☾ p
23	E	2d su
24	2	Saint
25	3	O's d
26	4	
27	5	
28	6	Hig

Prometh
ing the first
all the arts



D D Aspects, Holidays, FARMER'S CALENDAR.
M W Weather, &c

1	7	Clear and cold
2	E	Sexages Sunday
3	2	More [Candlem
4	3	♀ ♀ ♂ ♂ gr elong
5	4	Agatha Low mild
6	5	O apog tides
7	6	Good
8	7	Sleighting
9	E	Quinquages Sunday
10	2	● ecl inv [♄ stat
11	3	Shr Teus c.c.p Alt
12	4	Ash Wed ♀ ♂ D
13	5	Mid tid Valentine
14	6	Captain Cook killed
15	7	P I 1779
16	E	1st sund in Lent - 2
17	2	☐ ☺ More
18	3	☐ ☺ Snow
19	4	⊕ ent ✕ ♄ in
20	5	♁ ♀
21	6	♁ ♀
22	7	♁ per
23	E	2d sunday in Lent
24	2	Saint Matthew
25	3	O's dec 10° south
26	4	
27	5	
28	6	High Tides.

JOWLER.
 "I suppose I must save a piece for Jowler," said poor Mrs. Needy, while crumbling her children's supper. Yes, good woman, save a piece for your dog, but when you give it him, be sure to load it with ratsbane. But stop! I think Dr. Chymical says that this will not answer the purpose, for he will throw it up the moment it begins to sicken him. Then take your fowling-piece and despatch him without ceremony. It is surprising that a poor man who can but just rub and go, and has to scratch hard to find bread for his numerous little ones, must also keep a great lazy beef-eating dog in his house. Once in a great while this animal may be of some use, but no one half pays his living.

Away with your Jowlers and Towsers, your Whitefoots and Lightfoots—I had rather have one length of good fence to keep cattle out of mischief, than all the dogs in the universe."

Prometheus struck fire from flints about 1715 years before Christ he being the first is said to have stolen it from heaven; and became author of all the arts among the Greeks.

ood word.
 ations.

g.
 ng.

	Full	
	SEA	
11	40	
0	26	
1	12	
2	0	
2	50	
3	41	
4	31	
5	21	
6	9	
6	55	
7	40	
8	23	
9	7	
9	51	
10	33	
11	28	
0	22	
1	20	
2	21	
3	24	
4	25	
5	24	
6	19	
7	10	
7	59	
8	0	
8	46	
9	32	

; nothing



	Full	SEA.
10	18	
11	6	
11	54	
0	44	
1	35	
2	20	
3	16	
4	6	
4	52	
5	48	
6	22	
7	7	
7	52	
8	39	
9	20	
10	23	
11	20	
0	21	
1	23	
2	24	
3	22	
4	17	
5	8	
5	57	
6	44	
7	30	
8	0	
8	16	
9	4	
9	53	
10	43	

D	D	Aspects, Holidays, Weather, &c.	FARMER'S CALENDAR.
M	W		
1	7	David	<p>Take good care of your sheep. This is the best direction for the preservation and management of weak lambs that can possibly be given; for the best nursing for such lambs is to keep the ewes well, either upon your best English hay or red clover, with potatoes, carrots or white beans. Such feeding will ensure you strong lambs, with plenty of milk and save all the trouble of nursing. If any one lack these means or others, equally proper (for even barley, oats and corn will answer as substitutes for the potatoes, carrots or white beans, if given in small quantities, so as not to excite fever, and thereby cause ticks and the shedding of the wool) or if he neglect to use them, let him remember that such weak lambs should be treated in all respects as if they had been drowned and he would restore them to life. Apply gentle and regular warmth; give them warm milk frequently in small quantities (the milk of the sheep is best,) and if the ewe has milk sufficient for its support, you may generally raise them; but if not they commonly die. It is more work to nurse one such lamb for 24 hours, than to feed regularly one hundred sheep for the same time — Take your choice.</p> <p>He that would live at peace and rest, Must hear, and see, and say the best.</p>
2	E	3d sun in Lent	
3	2	O's dec 7° south	
4	3	Plenty	
5	4	Low [Mach & Ban	
6	5	H 8 . . . ap	
7	6	Perpet of	
8	7	tides. Snow.	
9	E	4th sunday in Lt Mid	
10	2	8 8 C [L S	
11	3	CC Norridg	
12	4	Mid tid	
13	5	with	
14	6	Wind.	
15	7	5th sunday in Lt. Q gr	
16	E	[elong; More	
17	2		
18	3	per [Norridg	
19	4	Pleas	
20	5	Bened O ent q	
21	6	Mid tid ant	
22	7	6th sunday in Lent	
23	E		
24	2	1 3 O weather	
25	3	O's dec 2° north	
26	4	Mid tid	
27	5	Good Friday More	
28	6	Pleasant	
29	7	Easter Day	
30	E	Easter Monday	
31	2		



FARMER'S CALENDAR.

D	D	Aspects. Holidays, Weather, &c.	
M	W		
1	3	East Tues	H □ O
2	4	Very low	
3	5	H 8 ☽	C apog
4	6	St Ambrose	warm
5	7	tides	and
6	E	1st sunday aft East	L
7	2	[S	pleasant
8	3	Sun's dec 7 ^o	
9	4		
10	5		Weather
11	6		
12	7	High tid	
13	E	2d Sunday aft East	
14	2	☽ perig	
15	3		Snow
16	4	H stat	
17	5	Dr Franklin died	
18	6	Low tid	[1790
19	7	Alph	Storm
20	E	3d sunday after East	
21	2	[Sun. ent 8	
22	3		
23	4	St Geor	♀ ♂ ♂
24	5		
25	6	St Mark	Spring
26	7	Mid tid	very
27	E	4th sunday after East	forward
28	2		
29	3		
30	4	☽ apog [8 ♂ 2 ♀	

Repair your fences ; plough for your spring grains ; and for your flax, do it repeatedly. Prepare your pea ground as soon as the frost is out, by digging and raking, until it is completely pulverized. If your soil is weak, manure with live or leached ashes, or chip dung, and rake it in ; then plant your early hotspurs in double rows. 4 or 5 or even 6 inches apart, and set your peas by hand, about half an inch distance in the rows ; cover lightly, and press down the surface of the earth upon the rows with the hoe. Be sure to select for this crop the driest and warmest soil in your garden, especially such as is secured from the north winds, by a tight fence or wall. Select from your cellar the best of your cabbages with heads, and set in some secure place, to stand for seed ; set different kinds remote from each other, to prevent their seed mixing at the time of blossoming. Set, at the same time, your best cabbage-stumps for early salad and greens. If your ground is moist set but just below the surface ; if dry set deep—say six inches or more.

Look to your water-courses and change their direction, to receive the benefit of the spring rains. The frequent changing of your water courses, will render your mowing even, and prevent one part from becoming too rank.

Full SEA.
11 24
0 25
1 16
2 5
2 52
3 38
4 23
5 7
5 52
6 39
7 29
8 22
9 20
10 21
11 24
0 26
1 26
2 21
3 12
4 1
4 47
5 32
6 18
7 4
7 52
8 0
8 41
9 32
10 24
11 15



FARMER'S CALENDAR.

ection:
ess.
g.
l.
Full
SEA.
0 4
1 52
1 37
2 22
3 4
3 48
4 33
5 20
6 13
7 9
8 10
9 14
10 19
11 22
0 19
1 12
2 2
2 48
4 33
4 17
5 3
5 49
6 37
7 27
8 0
8 18
9 9
9 59
10 46
11 32
0 16

D	D	Aspects, Holidays, Weather, &c	
M	W		
1	5		
2	6		
3	7	Low tid.	Cool and lodging, before the other part is grown fit to cut, and thus turn to your best profit.
4	E	5th S. aft. E. Rog.	what, if neglected, would become waste and damage.
5	2	[S. ♀ ☉]	
6	3	Quite pleas.	Expose not the imperfections and failings of your neighbours. Let detraction alone, unless you would bring trouble upon yourself.
7	4		"I knew it would be so," said old Tittle tattle, "and it is good enough for him. Mr. Peakaboo and I have seen and heard more than every one thinks of!" Shoh! shoh! old busybody! you had better mind your own concerns, and take heed to your own ways than thus to squint and belie your neighbours.
8	5	Asc. D.	No character is more to be detested than that of an eaves-dropper. Come let us attend to our own windows, and if they are stuffed with old rags, out with them and sell them for glass which is now cheap enough. Is your barn tight and snug? Cattle should be kept warm and comfortable; and you have heard that "a merciful man is merciful to his beast."
9	6	High	
10	7	S aft. Asc. D. ♀ ☉	
11	E	♀ ☉ M. ☉'s dec.	
12	2	♀ ☉ M. ☉'s dec.	
13	3	tid. [18°. N. D per.]	
14	4	Signs of rain.	
15	5		
16	6	Warm.	
17	7		
18	E	Whit. Sun.	
19	2	W. Mon.	
20	3		
21	4	Sun ent. ☐.	
22	5		
23	6	Mid. Showers.	
24	7	tid. Fine	
25	E	Trinity S.	
26	2	time	
27	3		
28	4	♀ gr. elong. [♁ ☉]	You may plant cucumbers to advantage the first of next month. They will often be as early as those planted in May, and generally bear better. Nurse your plants with your hoe often. Remove the dry earth, and
29	5	Low [D ap.]	
30	6	tid. for planting.	
31	7	♀ ♁ ♁.	

JUNE hath XXX Days.

The itch of knowing secrets, is naturally accompanied by the itch of telling them.

To know and to do, is the compendium of our duty.

Every deviation from the path of rectitude, is adverse to happiness.

He that values his time, is select of his company.

Evil communications corrupt the good and make the bad worse.

Whatever is violent, is seldom lasting.

Last Quarter, 1st Day, 9 hours 10 m. Evening.

New Moon, 8th Day, 7 hours 36 m. Evening.

First Quarter, 15th Day, 11 hours 11m. Morning.

Full Moon, 23d Day, 7 hour 49 m. Morning.

D	D	R.	☉	S.	Days' length	Day's Incr.	☉	☉	☉	☽	☽	Full SEA.
M	W.						F.	Southg.	agr	rises.	Pl.	
1	S	4	24	8 15	12 6	32	3	5 44	☾	0 5	feet	0 58
2	M	4	24	8 15	12 6	32	3	6 27	☽	0 25	feet	1 42
3	Tu	4	24	8 15	12 6	32	2	7 9	☽	0 45	head	2 23
4	W	4	23	8 15	14 6	34	2	7 51	☽	1 5	head	3 8
5	Th	4	22	8 15	16 6	36	2	8 43	☽	1 30	head	3 57
6	F	4	22	8 15	16 6	36	2	9 36	☽	2 0	neck	4 59
7	Sa	4	21	8 15	18 6	38	2	10 31	☽	2 33	neck	5 48
8	S	4	21	8 15	18 6	38	2	11 37	☉	sets	arms	6 50
9	M	4	20	8 15	20 6	40	1	evg 42	1	8 46	arms	7 57
10	Tu	4	20	8 15	20 6	40	1	1 49	2	9 38	breast	8 13
11	W	4	20	8 15	20 6	40	1	2 50	3	10 20	breast	10 4
12	Th	4	19	8 15	22 6	42	1	3 47	4	10 50	heart	11 0
13	F	4	19	8 15	22 6	42	1	4 39	5	11 16	heart	11 53
14	Sa	4	19	8 15	22 6	42	0	5 27	6	11 38	belly	0 41
15	S	4	19	8 15	22 6	42	s	6 13	☽	11 59	belly	1 27
16	M	4	18	8 15	24 6	42	½	6 58	8	morn	reins	2 12
17	Tu	4	18	8 15	24 6	42	1	7 43	9	0 22	reins	2 57
18	W	4	18	8 15	24 6	42	1	8 29	10	0 44	secrets	3 45
19	Th	4	17	8 15	26 6	46	1	9 16	11	1 12	secrets	4 30
20	F	4	17	8 15	26 6	46	1	10 5	12	1 42	secrets	5 19
21	Sa	4	17	8 15	26 6	46	1	10 55	13	2 16	thighs	6 9
22	S	4	17	8 15	26 6	46	2	11 46	14	2 59	thighs	7 0
23	M	4	17	8 15	26 6	46	2	morn	☉	rises	knees	7 50
24	Tu	4	17	8 15	26 6	46	2	0 36	16	8 47	knees	8 0
25	W	4	18	8 15	24 0	dec	2	1 24	17	9 16	knees	8 38
26	Th	4	18	8 15	24 0	2	2	2 9	18	9 42	legs	9 24
27	F	4	18	8 15	24 0	2	2	2 54	19	10 4	legs	10 8
28	S	4	18	8 15	24 0	2	3	3 37	20	10 24	feet	10 5
29	S	4	19	8 15	22 0	4	3	4 18	21	10 44	feet	11 32
30	M	4	19	8 15	22 0	4	3	5 0	22	11 2	feet	0 14

D	D	Aspe
M	W	W
1	E	1st Sun
2	2	Low ti
3	3	
4	4	
5	5	Bon.
6	6	
7	7	
8	E	2nd Su
9	2	peri
10	3	4
11	4	
12	5	♀ stat
13	6	
14	7	
15	E	3d Sun
16	2	
17	3	
18	4	
19	5	[Par.
20	6	
21	7	
22	E	4th Su
23	2	Mid. t
24	3	Nat. S
25	4	♂
26	5	[♀ inf
27	6	
28	7	
29	E	5th Su
30	2	[St. P



FARMER'S CALENDAR.

Aspects, Holidays, Weather, &c.

D	D	Aspects, Holidays, Weather, &c.
M	W	
1	E	1st Sun aft Trin
2	2	Low tid.
3	3	
4	4	
5	5	Bon. Cloudy
6	6	
7	7	
8	E	2nd Sun aft. Trin.
9	2	☾ perig High
10	3	☿ ☽ ☾
11	4	
12	5	☽ stat.] tid. [23 N.
13	6	stormy weather
14	7	
15	E	3d Sun aft. Trin.
16	2	Warm
17	3	
18	4	
19	5	[Par. ☽ ☿ ☽
20	6	
21	7	[☾ ent. ☽
22	E	4th Sun. aft Trin
23	2	Mid. tid. Rain
24	3	Nat. St John
25	4	☿ ☽
26	5	[☽ inf.
27	6	
28	7	growing weather
29	E	5th Sun aft Trin
30	2	[St. Pet ☽ ☽ ☽

give them fresh earth, especially if the season be dry. The best time is early in the morning. Continue to hoe and weed out your onions, and all other plants, even before the weeds appear, if possible. Hoe and bush your late peas. Plant more potatoes; sow more turnips. Continue to plant cucumbers for pickling. Top all such bush beans as are in blossom, by cutting off the top of the vines near to the blossom: they will be earlier and bear better. Thin out, and earth up all your plants. Remember that frequent hoeing is both rain and manure to your plants, especially in dry weather, if done in the morning. Plant out your cabbages, catliffowers, &c in moist or cloudy weather, but not when the ground is wet and heavy. Thin out your beets, carrots and parsnips, and fill up the rows that may be vacant. Cut your sage, mint, &c, when they begin to flower, and spread them to dry in an airy place.

As your winter manures, from the farm-yards and hog-sties, are doubtless disposed of to the best advantage, it becomes necessary that you attend to the formation of your summer manures, to dress your lands in autumn. Let your hogs be enclosed in an open pen, near to, or in one part of your barn yard. In to this enclosure throw the scrapings of your barns, together with every vegetable sub-

itch of tel-

iness.

g.

Full SEA.	
0	58
1	42
2	23
3	8
3	57
4	50
5	48
6	50
7	57
8	13
10	4
11	(
11	53
0	41
1	27
2	12
2	57
3	4
4	30
5	19
6	9
7	0
7	50
8	0
8	38
9	24
10	8
10	5
11	32
0	14



Full SEA.
0 56
1 42
2 32
3 26
4 25
5 29
6 35
7 39
8 40
9 36
10 28
11 16
0 3
0 49
1 35
2 22
3 11
4 1
4 52
5 42
6 31
7 18
8 0
8 3
8 47
9 29
10 10
10 52
11 36
0 23
1 14

D	M	Aspects	Holidays,	FARMER'S CALENDAR.
D	W	Weather, &c.		
1	3	Low tid.		Clouds stance that will petrify and rot through the
2	4	Vis V Mary		summer. Plough up and cart in, occasional-
3	5	♀ ✕ ♀ [8 ●		ly, such earth as can be collected from ditch-
4	6			es, or old sward Banks Your hogs will root
5	7			and mix them together, and thus, with a lit-
6	E	6th Sun aft Trin		tle attention, you may obtain 20 or 30 loads
7	2	High		of the best manure; or much more, if your
8	3		O ecl	hogs are numerous, and receive your attent-
9	4	[inv C perig		on. You will find a benefit, both in the
10	5	tid Columb b 1447		growth of your hogs, and in the quantity of
11	6	good weather for		manure, if you sow half an acre, or an acre,
12	7	haymakers. Quit		of clover on a rich soil near the barn-yard;
13	E	7th Sun aft Trin	hot.	and begin to cut early for feed for your hogs.
14	2	Low tid	but not	
15	3	Swithin. Huss burn		Time is every thing, in "making hay while
16	4	° gre long	[145	the sun shines." The best plan therefore is,
17	5	♂ ♂ ♀	equal	for the farmer to be at his mowing betimes in
18	6	Mahom di 634 ag 64	to the	the morning. Cut down as much as possible
19	7			by nine or ten o'clock by which time the
20	E	8th Sun aft Trin		dew will be off. Then spread the mowed grass
21	2		heats in	evenly, and about noon turn it over where it
22	3	Magdal	cl vis	lies thick. In the afternoon rake it into win-
23	4		dog	rows, but shake it up lightly so that it may be
24	5		days	exposed to the air. Towards sundown make
25	6	St James		it into small cocks and let it remain so a day
26	7	St Anne		or two. If it be not then dry enough shake
27	E	9th Sun aft Trin		it out again on a small space of ground and
28	2	Hayti.	Signs of	turn it over till it is dried. Then if necessary
29	3		rain	cock it again and as soon afterwards as possi-
30	4			ble draw it in. But it will save time and
31	5	tid		trouble in drying hay, if from four to eight



ite.
f frie nds

Full
SEA.

2 10
3 10
4 13
5 17
6 20
7 18
8 13
9 4
9 53
10 40
11 29
0 17
1 7
1 57
2 48
3 39
4 29
5 17
6 3
6 48
7 32
8 0
8 13
8 56
9 39
10 25
11 15
0 3
1 5
2 6
3 8

D		<i>Aspects. Holidays.</i>		FARMERS' CALENDAR.
M	W	<i>Weather, &c.</i>		
1	6	Lammas day	♀	<p>quarts of salt be applied to every ton of it. It is found that hay thus salted can be well saved in a much greener state; and at the same time the benefit which the hay derives from the salt, is more than fourfold its cost.</p> <p>Dont delay hilling your corn until haying, to husband time: It is the worst calculation possible. There is damage to your corn by much delay; to hoe or hill when your land is heavy or wet is bad; it leaves your land tight of excludes the Free circulation of air to the roots of your corn, and is waste in the delay of hoeing both in time and strength. 'Tis all bad. Select therefore the finest weather for your several hoeings—your land will then plough easy hoe easy, your weeds will wilt and die in the sun, and your corn will be refreshed with a warm loose or light earth, which will readily receive the air and moisture to nourish the corn</p> <p>The earlier your wheat and rye are harvested the better. Do it before the grain becomes hard; it will then have a thinner skin and produce whiter flour, although the whole weight of the grain will be rather less than if harvested later.</p> <p>Soon as the morn illumes the east, The reapers in the field are seen; The golden sheaves are soon increas'd, And joy attends the splendid scene.</p>
2	7	[gr el	Very	
3	E 10th	Sun aft Trin		
4	2	♂ ♀)	Very high	
5	3	C S Aug		
6	4	Transf	Sun ecl invis	
7	5	tides	hot with	
8	6		signs	
9	7	Sun s dec	16° N	
10	E 11th	Sun after Trin		
11	2			
12	3			
13	4			
14	5	♂ ☐ ♀		
15	6	Assump		
16	7	tides		
17	E 12th	Sun af Trin		
18	2			
19	3			
20	4			
21	5			
22	6	Mid tid		
23	7	Sun ent	☿	
24	E 13th	Sun af Trin		
25	2		[St Barth	
26	3			
27	4			
28	5	St Au		
29	6	St John B	behd	
30	7	Low tid	[♄ Δ ☿	
31	E 14th	Sun aft Trin		



D D Aspects, Holidays,
M W Weather. &c.

FARMER'S CALENDAR.

1 2 Giles ♂ ♂ D
2 3 per
3 4
4 5 High tid. [Cols ♂
5 6 Dog days end [X ♀
6 7 h stat ♀ ♂ C
7 E 15th Sun. aft Trin.
8 2
9 3
10 4
11 5
12 6 Low tid' Thunder
13 7 Sun's dec. 4. N ♀
14 E 16th Sun aft.
15 2 [Trin D apog.
16 3
17 4 Lamb.
18 5 [H^h stat
19 6 4 S. E.
20 7 ♀ stat Mid' tid.
21 E 17th Sun aft Trin.
22 2 [St Math
23 3 ☉ ent = storm
24 4
25 5 ♀ gr elong Fine
26 6 St Cypr weather
27 7 2 ♂ D
28 E 18th Sun aft Trin
29 2 St Mich. Mid. tid
30 3 St Jerome ☉ per

Stay at home and mind your business, and leave litigation and the lawyers to those who have less sense and more money. I never view the crowds that repair to our Court-houses in the Country, and spend day after day during term time in gazing at each other; without regretting that they are not at home attending to affairs which will be more productive of pleasure and advantage. Nor do I ever observe their unfortunate horses tied to fences and famishing through want of food, but I think how many industrious and deserving men, are pining in obscurity because they do not possess the means which these spendthrifts of time are so criminally neglecting.

I recollect in one of my excursions through the country, to have observed a hale-hearted looking young man arrive every day while the Court was sitting, and after waiting nearly a couple of hours for an interview with his lawyer, would proceed to the Court house where he would remain until the rising of the Court, then return to the tavern, procure what is generally termed refreshment, and having done so, would mount his jaded horse and set off for home.

I was struck with this persons appearance, and having occasion to visit the same place about a year after; I found the him occupied

ger.
ndour.
g.
Full
SEA.
4 10
5 9
6 4
6 57
7 48
8 37
9 26
10 15
11 5
11 57
0 48
1 40
2 32
3 19
4 6
4 52
5 37
6 18
7 2
7 46
8 0
8 32
9 21
10 13
11 10
0 9
1 10
2 10
3 9
4 4



D D Aspects Holidays.
M W Weather, &c.

FARMERS' CALENDAR.

Full	SEA
4	56
5	46
6	35
7	21
8	13
9	3
9	55
10	47
11	40
0	32
1	22
2	8
2	54
3	38
4	20
5	4
5	47
6	33
7	22
8	0
8	13
9	9
10	9
11	10
0	9
1	8
2	6
2	57
3	47
4	34
5	22

1	4	☉'s dec 3 rd
2	5	S ☐ ☽ ☉ very
3	6	☽ ☐ ☉ fine
4	7	Mid tid. days
5	E	19th Sun aft Tr
6	2	Faith. but cold
7	3	
8	4	nights
9	5	St Denys
10	6	
11	7	☽ ☉ ☽ Very
12	E	20th Sun at Tr
13	2	☽ ☐ ☽ low.
14	3	
15	4	tid
16	5	
17	6	Ethel.
18	7	St Luke
19	E	21 Sun aft Tr
20	2	Mid
21	3	
22	4	tid
23	5	
24	6	☉ ent M ☽ perig
25	7	Crisp
26	E	22d Sun aft Trin
27	2	
28	3	St Sim and St Jud
29	4	
30	5	Low tid
31	6	☽ ☉ ☽

in a similar manner. But he no longer exhibited the same ruddy appearance; his face was bloated, his figure emaciated, and his speech hesitating and tremulous. It appeared that the object which he had engaged in a law suit to obtain had eluded his grasp, and that he had reduced himself to wretchedness and want by the expences which had been incurred in the pursuit.

He no longer met with the same attention at the tavern as formerly. His enquiries if the tavern keeper did not say he should have dinner; if it obtained an answer was one abrupt and rude, as the servants turned away to attend to the commands of a new or more profitable customer.

It was alter one of these rebuffs that as I sat at my window, I observed him walk out of the house, with a countenance in which shame and hunger strove for the mastery; and meeting at the door with a wealthy gentleman, I heard him bargaining for the sale of what appeared to me to be his last ox; this animal after some difficulty, he sold at a reduced price, and was to be paid for, partly by a note, drawn in favour of a neighbour who had made him advances, and partly in goods out of the store.

With a heartless and dejected demeanour, he then bestrode his miserable steed, and a gain retraced his steps towards his de- late

the first.



Full SEA.
6 9
6 58
7 49
8 41
9 33
10 25
11 16
0 4
0 50
1 33
2 17
2 57
3 40
4 23
5 10
6 0
6 55
7 55
8 0
8 57
10 1
11 1
11 59
0 62
1 41
2 29
3 15
4 1
4 49
6 37

D	M	Aspects, Holidays, Weather, &c.	FARMER'S CALENDAR.
1	7	All Saints & stat	and cheerless habitation. Reader if such a
2	E	23d Sun aft Trin	picture has ever fallen beneath your notice ;
3	2	All Souls	think not it is one of a solitary nature, and
4	3		take warning from the example it affords.
5	4	♄ gr elon	
6	5	tid	<i>Signs</i> Dry your seeds well before you put them
7	6	♃♄☉	up ; and when put up, let the air have access
8	7		to them. It is best to put them into drawers,
9	E	24th Sun aft Tr ☉ ap	or partitions of drawers, kept part way open.
10	2	☉'s dec 17° S Low	Gather from your gardens all winter vegeta-
11	3	St Mart	bles, before the hard frosts commence, espe-
12	4	tid	cially winter squashes ; dry and house them
13	5	Brit ♃♄☉	carefully. If you do not select your seed-corn,
14	6		before gathering, from the hills, do it as you
15	7		are husking, selecting the fairest and ripest
16	E	35th Sun aft Trin	ears, and such as have the smallest cob, and
17	2	♃♄☉	are best filled out at the ends ; though the ker-
18	3		nels near the end should never be reserved for
19	4	♃♄♃ Quite	seed.
20	5	♃ per	Now is the time to improve your next crop.
21	6	♃♄☉ high tid	By pure seed, and by selecting the earliest or
22	7	Cecilia Sun ent ♃	the ripest, you may bring forward your suc-
23	E	26th Sun aft Tr	ceeding crops 10, 15 or 20 days earlier, and
24	2		thus enable you to improve your late sowing.
25	3		Nur need the improvement stop here. By
26	4	Low	selecting your seed-corn from your field, tak-
27	5	tid	ing the ripest ears, (at different stages of the
28	6		corn, and beginning early in Sept.) and from
29	7		the most thrifty stalks, you may bring forward
30	E	Adv Sun St Andrew	your next crop still earlier, And moreover if
			you select this seed from such stalks only a

1726
er

DECEMBER, hath XXXI Days

A. D. INVENTIONS. INTRODUCTION OF ARTS.

- 939 The Bible translated into Saxon.
- 941 Arithmetic brought into Europe.
- 991 The Arabian figures began to be used instead of letters.
- 1070 Notes of music invented.

New Moon, 2d Day, 9 hours 24 m. Morning.
 First Quarter, 10th Day 2 hours 44 m. Evening.
 Full Moon, 17th Day, 5 hours 38 m. Evening.
 Last Quarter, 24th day 9 hours 12 m. Morning.

D	D	R.	☉	s	Days' length	Day's decr	☺	☾	☽	☿	♁	♂	♀	♄	♃	Full SEA
M	W						F	Sou'ng	ag	riser.	P.					
1	M	7	34	58	52	6	36	11	11	14	29	6	31	secrets	6	28
2	Tu	7	35	58	50	6	38	11	EVEN	4	0	SETS		thighs	7	19
3	W	7	35	58	50	6	38	10	0	57	1	5	6	thighs	8	11
4	Th	7	36	58	48	6	40	10	1	46	2	6	1	knees	9	2
5	Fr	7	37	58	46	6	42	9	2	37	3	7	2	knees	9	51
6	Sa	7	37	58	49	6	42	9	3	23	4	8	3	legs	10	37
7	S	7	38	58	44	6	44	8	4	7	5	9	6	legs	11	21
8	M	7	38	58	44	6	44	8	4	49	6	10	7	legs	0	8
9	Tu	7	39	58	42	6	46	8	5	30	7	11	10	feet	0	44
10	W	7	40	58	40	6	48	7	6	11	C	MORN.		feet	1	25
11	Th	7	40	58	40	6	48	7	6	52	9	0	13	head	2	6
12	Fr	7	40	58	40	6	50	6	7	36	10	1	18	head	2	50
13	Sa	7	41	58	38	6	54	6	8	23	11	2	25	head	3	36
14	S	7	41	58	38	6	54	5	9	14	12	3	35	neck	4	28
15	M	7	41	58	38	6	54	5	10	11	13	4	48	neck	5	25
16	Tu	7	41	58	38	6	54	4	11	12	14	6	3	arms	6	26
17	W	7	42	58	36	6	56	4	MORN	0		RISES		arms	7	30
18	Th	7	42	58	36	6	56	3	0	16	16	5	4	breast	8	0
19	Fr	7	42	58	36	6	56	3	1	20	17	6	24	breast	8	34
20	Sa	7	42	58	36	6	56	2	2	21	18	7	45	heart	9	35
21	S	7	42	58	36	6	56	2	3	18	19	9	5	heart	10	32
22	M	7	42	58	36	D		1	4	11	20	10	21	belly	11	25
23	Tu	7	42	58	36			1	4	59	21	11	34	belly	0	11
24	W	7	42	58	36			1	5	47	9	MORN		reins	1	4
25	Th	7	42	58	36			1	5	33	23	0	45	reins	1	47
26	Fr	7	42	58	36			1	5	20	24	1	54	secrets	2	34
27	Sa	7	42	58	36			1	8	8	25	3	4	secrets	3	22
28	S	7	42	58	36			2	8	57	26	4	10	secrets	4	11
29	M	7	41	58	38			2	9	48	37	5	13	thighs	5	2
30	Tu	7	41	58	38			2	9	39	28	6	10	thighs	6	53
31	W	7	41	58	33			3	11	30	29	7	0	knees	7	44

D	D	M	W
1	2	M	
2	3		
3	4	ti	
4	5	th	
5	6		
6	7	N	
7	8	E	2
8	9	C	
9	10		
10	11	L	
11	12	S	
12	13	ti	
13	14	L	
14	15	E	3
15	16	ir	
16	17	g	
17	18	8	
18	19	5	2
19	20	6	8
20	21	7	4
21	22	E	4
22	23	2	8
23	24	3	
24	25	4	
25	26	5	
26	27	6	
27	28	7	
28	29	E	2
29	30	2	
30	31	3	
31		4	



FARMER'S CALENDAR.

D, D Aspects, Holidays,
M, W Weather, &c.

1	2	Midd
2	3	tid
3	4	tid
4	5	♂ ♀
5	6	sharp air
6	7	Nicholas
7	8	2d Sun in Adv
8	9	2 Conc B V Mary
9	10	3
10	11	4 Low
11	12	5 Sun's decl 28° S
12	13	6 tid
13	14	7 Lucy ♀ sup ♂
14	15	8 3d Sun in Adv Wash-
15	16	9 ington died 1790
16	17	10 ♀ ☐ ✕
17	18	11 ♂ ☐ ♂ High
18	19	12 ♂ ♀
19	20	13 ♀ gr along ♀ per
20	21	14 7 tid
21	22	15 4th Sun in Adv
22	23	16 2 Sun ent
23	24	17 3
24	25	18 4
25	26	19 5 Christmas Day
26	27	20 6 St Steph Low
27	28	21 7 St John tid
28	29	22 8 1st Sun aft Christm
29	30	23 2
30	31	24 3
31		25 4 Silves

71010.

produce two or more ears, you may by adhering to this practice, double or even treble your quantity of corn upon the same grounds, with only the same tillage.

Now picking winter apples, carting corn, throwing up gardens into ridges, digging potatoes, &c. keep all hands busy by day; while husking, eating baked puddings, applepies, &c. and telling a merry tale, or singing a humorous song, make a long evening speed swiftly and pleasantly away.

Industry may now relax a little from her annual toils and look around her on her comforts and enjoyments, with a brightening countenance, while the warm aspirations of gratitude issuing from her heart ascend to the Giver of all Good, from whom those comforts and enjoyments are all derived.

Securely house your carts harrows ploughs and all the implements of the summer's labours. Improve the first spell of sledding to renew your stock of wood. See that your fences be in good repair, to prevent the cattle, &c. from injuring your crops of winter grain, meadows, &c. in case of an open winter. Hogs for home use may now be killed as it is the best time for making good bacon.

Feed not only your cattle but also the houseless foodless child of want: so will the prayers of the poor call down blessings on you and yours.

TIDE TABLE for the American Coast.

Amelia Island	add 1	00	Machias	add 3	30
Boston Harbour	add 4	00	Martha's Vinyard	add 0	07
Bell Island Strts	add 1	45	Nantucket	add 0	07
Bermuda In.	sub. 0	30	Nanaganset Bay	add 0	07
Cape Fear	add 0	30	New York	add 1	24
Cape Charles	add 0	15	Ovacock In	add 1	30
Cape May and Henlopon	add 1	15	Passamaquoddy	add 4	00
Cape Roman	add 0	30	Penobscot Bay	add 3	15
Cape Sable	add 0	30	Philadelphia	add 6	57
Charleston Bar	sub. 0	15	Portland	add 3	15
Chebuco Bay		00	Portsmouth & Newburyport	add 3	45
Florida Keys	add 1	20	Quebec	add 0	30
Fundy Bay	add 1	15	Sandy Hook	subt. 0	53
Hell Gate	add 1	51	Savannah	add 0	45
Kennebeck entr	add 3	15			

The times in the above Table are to be added to or subtracted from the time of high water at Halifax, according to the directions there given. Example.—To find the time of high water at Quebec May 1 1823. The time of high water at Halifax May 1 by the Almanack is 0h 4m. To this add 30m (the time set against Quebec in the Table) and you have the time of high water at Quebec 0h 34m.

Eclipses for 1823.

There will be Six Eclipses this year; four of the Sun, and two of the Moon, in the manner following:—

I. The first will be of the Sun, January 12th day, 4h 42m in the morning; of course invisible here.

II The second will be of the Moon, January 26th day, 0h 59m in the evening; of course invisible here.

III The third will be of the Sun, February 10th day, 10h 52m in the evening; consequently invisible to us.

IV. The fourth will be of the Sun, July 8th day, 2h 28m in the morning; of course invisible to us

V. The fifth will be of the Moon, beginning on the 22d and ending on the 23d of July. visible and total as follows:

Beginning	9h 18m	} <i>Appar. time even.</i>
Middle	11h 14	
End	1h 10	} <i>Appar. time morn.</i>
Duration	3h 52	

Digits eclipsed, 18° 11½' on the Moon's Southern Limb.

VI The sixth will be of the Sun, August 6th day, 9h 41m in the morning, but invisible to us.—Moon's lat. 1° 24½' South.

Where there is no difficulty, there can be no just claim to praise, Poverty is more to be dreaded than riches are to be desired.

In No
 T.
 Major
 Lord
 Capt
 U Ho
 ris De
 Dy Q
 Major
 Comy
 Genl.
 Swiney
 Willm
 er, W
 Gens.
 dard Es
 J Strac
 Carter
 W Tapp
 Cols W
 Officers
Comm
 Adolph
 Alexr G
 Depty A
 Lt M Co
 Twining
 Qtr Ma
 R L
 His Exc
 S
 Capt Sh
 Esq Asst
 Royal Ar
 Major G
 mandin
 Captain
 Lieuts A
 Grubb
 M. and

STAFF OF THE ARMY.

In Nova-Scotia, New-Brunswick, and their Dependencies, under the
Command of His Excellency

Lieut. Genl. Sir JAMES KEMPT, G. C. B. &c. &c. &c.

Major Hon C Gore 85th Foot. Esqn. Wm Plant. H C Darling and B Rob- Lord F Leamox 62d do. Aides de Camp. Inson Esqrs Dp Asst Com Genls A Capt Yorke 52d Foot. Mil Sec. Lt R Phair Asst Bark Mstr Genl J Gal- U Howe Asst Mil Sec. Lt Col Har- higher Fort Major. Rev R Willis O ris Dep Adj Gen. Lt Col Beresford. Chapl at St John R Milne Ditto at Dy Qr Mstr Genl Maj B zolgele. Fredericton J Bell Hosp Assistant Major Brigade. F W Haden Esq Dy <i>Cape Breton.</i> Comy Genl. Geo Head Asst Comy Capt Weeks Town Adj. W Cox B Genl. Chas Blackadar, J S Jesse, G Mastr. Rev H Bianey, Officiating Swiney, Jas Slade, Oliver Goldsmith. Chaplain.	<i>Prince Edward Island</i> His Excellency C D SMITH, Lieut. Governor J F Holland, Esq Barrack Mr. Lt J Strachan Esq Dy Jusp of Hosp. J Lane. Town-Major, B De St Croix, Carter Esq Apoth to the Forces. J Esq Hospital Asst Rev T Desbrisay W Tapp Esq Ordnance Storekr Lt Officiating Chaplain Cols Wodehouse and Russell Insp F Officers Militia <i>Newfoundland.</i> Ensign Green, Fort Major. W Lane Esq Asst Comm Genl C W Bever- ley, Robert Lee, and W Stephens, Esqrs Dy Asst Com-Genls. Rev F H Carrington, Officiating Chaplain. <i>Bermuda.</i> Lt E M-Goldback 62d Regt. Town Adjutant W. Tucker, Esq Actg Barrack Master. Major Blanchford, Com Royal Engineers. Lt Longmore Royal Arty. Thomas F Winters Esq Asst Com Gen James Reid, Esq Dy-Asst Com-Genl. J. Williams, Esq Staff Surgeon. J Crawford, Hospital Assistant. Rev John Lough Esq Asst Comy Genl. Chas A Clarke, Officiating Chaplain.
--	--

Commissariat Dept of Accounts.

Adolph Veith Esq Asst Comy Genl.
 Alexr Grant and Jos Charlier Esqrs
 Depty Assisant Commissy Generals.

Garrison of Halifax.

Lt M-Colla Town Major Rev J T
 Twining Off Chap. J Crawley Gar
 Qrtr Master

Annapolis.

R Leslie, Hospital Assistant

New Brunswick.

His Excellency Major General G. S.
 SMITH Lieut Governor
 Capt Shore Aid de Camp T Price
 Esq Asst Comy Genl. Chas A Clarke, Officiating Chaplain.

OFFICERS OF THE ARMY.

<i>Royal Artillery Halifax</i> Major G Foster, Com- manding Captain Mosse. Lieuts A Duncan, Adj Griffin, Lyster, Q. M. and Cornelius	<i>Royal Engineers, Halif- fax</i> Lieuts. Tingling, Pooley <i>Royal Artillery, New- Brunswick</i> Capt Johnston Lieut Ruinacles	<i>Royal Engineers, New- Brunswick.</i> Capt. Barry 2d Batt 60th Regiment of Foot. Lieut Col George Mac- kie (Col)
--	--	--

add 3 30
 add 0 07
 add 0 07
 add 0 07
 add 1 24
 add 1 30
 add 4 10
 add 3 15
 add 6 57
 add 3 15
 add 3 45
 add 0 30
 ubt. 0 53
 add 0 45.

ected from
 ere given.
 823. The
 . To this
 have the

vo of the
 the morn-
 m in the
 2m in the
 he morn-
 nding on

e morn-

Major Henry Fitzgerald

Captains
E Purdon (Maj)
Francis Beretzie
Adolphus De Damas
Charles Barrington
Lieutenants
Andrew Ellison
F F Evans
J A Wieburg, Adjt
Charles Chichester

Ensigns
Arthur Smith
John Day
John Sweeny
Pay Master, H Biggs
Adjutant, J A Wieburg
Qr. Master, John Kiens
Asst. Sur. Peter Smith

At Bermuda

Major J Galiffe (Lt Col)

Captains
Fredk Im Thuru (Maj)
J Franchise
J Strongitharm
Lieutenants
Julius Van Bouk
R B Heslop
Ensigns
C W Von Kruger
R Stapleton
J Robinson

62d Regiment of Foot

Lt Col. Geo Gauntlett

Majors
D Ximines Lt Col
R Roberts, Lt Col

Captains

Fyre Smyth, M.
William Hull, M.
W Riddall, L/C
I Sweeney, M.
W Hartley
W Johnstone
John Walter
John Reed
Wm L Peard

Lieutenants

Edward Parker,
John Keith
James Butler
A Stewart
James Dennis
Ferd. Spiller
John O'Grady
Henry Michell

J F Macdonell
J Singleton

John Mansell

Ensigns

E P Brooke
Chas H J Lane
G G Warden
Lord F Lennox
Richard Power
George Damerum
Pay, R Jellicoe
Adj E Parker
Q M G Robertson
Sur C R Alderson M D
A. S. J J Fawcett

81st Regiment of Foot

Colonel

Sir J Kempt, G. C. B.
Lieut Colonel

Andrew Creagh

Majors
P Waterhouse, Lt
P C Taylor

Captains

J M Wardrop, m.
Richard Cole, m.
R Pakington,
J Duval
Charles French
Thomas Coleman
G W Horton, m.
Mont. Cairnes

Lieutenants

Samuel Jenkins
K Montgomery
J Sisson,
Thomas Manning
T C Wheat
George Smyth
J A Lutman
David Duval
E T Thomson

Henry Dixon
Charles Oakley
William Hall

Ensigns

John Brown
R Hamilton
T Hammond
Philip Splaine
P C Marsh
Wm M Donald
Jas Douglas

Pay Mr. A Thompson

Adj J Sisson

Q. M J Roberts

Sur Wm Cogan

A S. Jas Ewing

Roa

Bedfo
Rock
Holla
Fultz
Much
Holtz
Fitzm
Pence
M Lal
Mason
Dalho
Wilcox
Falmo
Thistle
Porter
Gasper
Horton
G
Horton
Hamilt
Bragg
Sharp's
Aylest
Harris'
Wilmot
Leonar
Hicks
Kents
Annapo

Fultz's
Fletche
Summe
Hal's
Keys's
M Keen
Gay's
Field's
Sibley's
Gourley
Stewia
Clark's
Truro to
Bhaucha

Time of going through the Falls.

THE Falls are level (or still water) about three hours and an half on the Flood and about two hours and an half on the ebb, which makes it passable four times in 24 hours about 10 or 15 minutes each time.—No other rule can be given, as much depends on the floods in the River St. John and the time of high water or full sea, which is often hastened by winds, and in proportion to the height of them.

Roads to the Principal Towns in the Province from Halifax,
with the names of Innkeepers.

<i>Halifax to</i>	Onslow—Gourley's	6	<i>From Halifax to Lu-</i>	
Bédford Inn	3 Londonderry—R		<i>nenburgh.</i>	
Rockingham	3 Fleeming	7	To nine mile house	9
Holland's	3 Lower Village—Yewitt	7	Harnishé's head of	
Fultz's inn	3 Foot of Cob Mountain		St Margaret's bay	22
Mitchell's inn	3 Clark's	6	Church's Chester	16
Hiltz $\frac{1}{2}$ way house	6 Sutherland's	4	Crandlé's head of	
Fitzmorris new do	1 $\frac{1}{2}$ Top of Cob Mountain		Chesterbason	6
Pence's Farm	3 $\frac{1}{2}$ J Pardy	6	Zwicker's head of	
M ^c Lellan's 30m	4 $\frac{1}{2}$ River Phillip—Hawson	9	Mahone bay	15
Mason's Arms	5 Stewart's	10	Heckman's	16
Dalhouseie Arms	1 Blusk's	2	Whole distance	73
Wilcox, Windsor	9 Amherst—Bents	8	<i>From Lunenburgh to Li-</i>	
Falmouth Bridge	6 Fort Cumberland—		<i>verpool.</i>	
Thistle inn	1 Witherhead	7	To Maguir's ferry,	
Porter's $\frac{1}{2}$ way inn			Lahave river	7
Gaspereau	5 <i>From Annapolis to</i>		Drew's Inn	7
Horton—Fowler's	5 <i>Shelburne.</i>		Conrod's ferry Port	
Graham's	3 <i>From Annapolis to</i>		Medway	7
Horton Corner—	3 Clement's Church	9	M. Vica Inn	2
Hamilton's	Bear river bridge	8	Bull's Inn	
Bragg's	Read & Co. Digby	9	Cove	
Sharp's inn	Everets's Weymouth	13	M ^c Lean's Liverpool	2
Aylesford—Crane's	road		Whole distance	34
Harris's	8 Coostmon's Weymouth		<i>To Cumberland via</i>	
Wilmot—Gibbons	1 Church	6	<i>Parrsborough</i>	
Leonard's	12 Jourme's Sissibo R.	4	Windsor	45
Hicks Bridge	10 Comean's Clare	9	Parrsboro' (by water)	
Kents	5 Terrian's Montagan	10	Crane's	30
Annapolis—Chandler	8 Cove	10	Lewis's	9
	7 Devand's Salmon R.	10	Moore's	1
	— Conning beaver river	4	Macan bridge, Fur-	
	129 Parry's Yarmouth		longs	8
Fultz's inn	12 Lakes	8	Read's Macan river	4
Fletcher's	6 Smith & Richan's,		Napan Pugsley's	5
Summerfield—Schultz	5 Yarmouth Church	5	Amherst, Embree	7
Hal's	3 Blanvelt's Tusket		— Bent's	2
Keys's	6 village	10	Whetherhead & Yan-	
M ^c Keen	3 $\frac{1}{2}$ Nickerson's Apublic		dell's Fort Cumb	7
Gay's River—Corbet	3 R ver	8	Whole distance—	118
Field's	3 Sinney's Apublic bay	5	<i>To Pictou</i>	
Sibley's	5 Earkins Pubnico R.	10	Dickson's Truro	62
Gourley	1 Kendrick's Barring		Archibald Salmon R.	14
Stewiack—Polly	3 ton	13	Stewaris'	9
Clark's	6 Powel's Clyde river	6	M ^c Connel's	8
Truro town—Witter's	6 Hargrave's Shel-		M ^c George Pictou	10
Bauchards—6	62 burne 18 whole dis—	164		

nompson

half on
h makes
ne.—No
iver St.
tened by

To Pictou via Musquodoboit.	John Fraser's	7	Sutherland's	7
Dartmouth ferry	Across the harbour to		Smith's Merigomish	6
Preston, Bradley's	Walmsley court house	1	Ferguson's	7
Putnam's farm	Whole distance—95	5	M'Queen's Antigonish	16
Hart's	* Cross roads from Archibald's to Scott's	5	Whole distance—137	
M'Keen's	From Halifax to Antigonish	11	Road to the Gulf shore	
Lettkie's	To Blanchard's W	13	To Fergusons	121
Robert Archibald's	River Pictou	4	Priest M'Donald's *	8
Robert Geddes'	Archibald's middle	4	M'Queen's Antigonish	16
Henry's	River Pictou	4	Whole distance—145	
Dunbar's W branch	Campbell's East River Pictou	26		
river Pictou	ver Pictou	8		
W M Kay		8		

TO TRAVELLERS.

For the information of Travellers between Windsor and Parrsborough &c.

THE Parrsborough Packet sails regularly between Windsor and Parrsborough every week, from the 1st April to Christmas, viz.—leaves Parrsborough on Monday, wind and weather permitting so as to be at Windsor on Tuesday; and will sail from thence the first high water that happens after eight o'clock in the morning of that day; the Packet frequently runs twice or three times a week when business requires it.

The Praise of Potatoes.

Hail-mare Potatoes! hot or cold all hail!
O quickly come mine appetites delight!
Whether in ovens fiery concave closed
By Bakers art, delicious thou'rt embrown'd
While rills of purple gravy from the pores
Of mighty beef improve the luscious fare.—
Whether the dame of culinary skill
Have rudely scalp'd thee o'er, and to the rage
Of warring elements consign'd thee deep
Beneath the cope of air excluding lid
In humid durance plung'd; or when with steaks
Of marbled vein, from rump of stall fed steer
Disparted late—sliced in the shallow pan
I view thee kindly stew'd how joys my heart!
How flash with eager glance my longing eyes!
Or in the tedious eve when nipping frost
Reigns Potant; mid the smouldring embers roast
(From sulterranean store selected) those
Of amplest size rotund, of native coal
Yet unberest; and if my homely board
Penurious, add but few salubrious grains
Of humble salt, -I bless the cheap repast

